

The Contact of Graphene with Ni(111) Surface: Description by Modern Dispersive Forces Approaches

Helena Muñoz-Galán,¹ Francesc Viñes,^{1,*} Julian Gebhardt,² Andreas Görling,² and Francesc Illas¹

¹ *Departament de Química Física & Institut de Química Teòrica i Computacional (IQTCUB), Universitat de Barcelona, c/Martí i Franquès 1, 08028 Barcelona, Spain.*

² *Lehrstuhl für Theoretische Chemie, Universität Erlangen-Nürnberg, Egerlandstr. 3, 91058 Erlangen, Germany.*

*Corresponding author: francesc.vines@ub.edu

Abstract

Here we present a Density Functional Theory (*DFT*) study on the suitability of modern corrections for the inclusion of dispersion related terms (*DFT-D*) in treating the interaction of graphene and metal surfaces, exemplified by the graphene/Ni(111) system. The Perdew-Burke-Ernzerhof (*PBE*) exchange-correlation functional is used as basis, on top of which we tested the family of Grimme corrections (D2 and D3, including Becke-Jonson damping and Andersson approach) as well as different flavors of the approach by Tkatchenko and Scheffler (*TS*). Two experimentally observed chemisorbed states, top-fcc and bridge-top conformations, were examined, as well as one physisorbed situation, the hcp-fcc state. Geometric, energetic, and electronic properties were compared to sets of experimental data for our model system of graphene/Ni(111), but also for available data of bulk Ni, graphite, and free-standing graphene. Results show that two of the most recent approximations, the fully *ab initio* TS-MBD, and the semi-empirical Grimme D3 correction are best suited to describe graphene↔metal contacts, yet, comparing to earlier studies, the Rev-vdW-DF2 functional is also a good option, whereas optB86-vdW and optB88b-vdW functionals are fairly close to experimental values to be harmless used. The present results highlight how different approaches for the approximate treatment of dispersive forces yield different results, and so fine-tuning and testing of the envisioned approach for every specific system is advisable. The present survey clears the path for future accurate and affordable theoretical studies of nanotechnologic devices based on graphene-metal contacts.

Keywords: Graphene · Dispersive Forces · Ni(111) · Density Functional Theory

1 Introduction

Since graphene was isolated in 2004 by Geim and coworkers [1], it has been rapidly gaining importance to become a hub of nanotechnological electronics research. Electronic and technological industries have focused on graphene as its mechanical and electric properties, combined with an, in theory, low fabrication cost, make it a promising substitute for conventional materials. For the synthesis of high-quality and large-size patches of graphene for transparent electronics and high frequency devices industry a variety of methods evolved, including exfoliation [1], epitaxial growth [2-4], and chemical vapor deposition [5-7].

Ni(111) quickly gained momentum against other metals in graphene synthesis since the lattice mismatch of graphene with respect to Ni(111) is propitiously small allowing the formation of well-ordered, rather large, patches [8]. This makes Ni(111) suitable for systematic studies of graphene adsorption as well. In addition, conduction measurements involving graphene need metal electrodes to be carried out, so a full understanding of the physics of graphene with metal surfaces is essential. Fortunately, the binding mechanism has been addressed by a variety of theoretical and experimental studies and is now well understood. Previous studies based on X-Ray Photoemission Spectroscopies (*XPS*) detected two energetically degenerate attachment conformations of graphene on Ni(111) [9], the so-called bridge-top and top-fcc chemisorbed conformations. The possible identification of these arrangements by Scanning Tunneling Microscopy (*STM*) was suggested from theoretical predictions in that study and confirmed in a subsequent study by high-resolution STM [10]. Other conformations, such as hcp-fcc, imply that graphene is detached (physisorbed) over the Ni(111) surface [9]. The top-hcp conformation, despite being experimentally considered as a possibility similar to top-fcc [10], has been characterized as a transition state in between conformations [9].

Due to its particular electronic structure, graphene is a zero bandgap semimetal and exhibits the famous linear band dispersion in the vicinity of each \mathbf{k} -point within the Brillouin zone.[11,12] However, these Dirac points may be strongly modified when graphene adsorbs on metal surfaces, as shown in previous studies [2,5,13]. Indeed, thorough theoretical calculations show strong hybridization between metal bands and the graphene π -band for bridge-top and top-fcc modes [14,15], breaking the linear dispersion at the Dirac point. In contrast, in the weakly physisorbed hcp-fcc graphene conformation, the π -band does not strongly interact with the Ni(111) bands due to the larger adsorption distance, and, consequently, the linear dispersion prevails. In that case, the

influence of the substrate results only in a small shift of the Dirac point with respect to the Fermi level, *i.e.*, a small doping effect [16].

Due to the variety of different bonding motives including chemisorption and physisorption, as well as the importance of the graphene/Ni(111) system, it constitutes a textbook example of metal \leftrightarrow graphene interactions, results of which can be extended to other transition metals. Previous theoretical and experimental studies showed that dispersive forces play a crucial role in this system, just as in the adsorption of aromatic molecules on metal surfaces [15,17,18].

Initially *ab initio* Density Functional Theory (*DFT*) studies relied on the Local Density Approximation (*LDA*), which could apparently correctly discern between physisorbed and chemisorbed states [16]. Nowadays this is known to happen because of the *LDA* exchange-correlation functionals tend to overbind [19]. The upgrade to Generalized Gradient Approximation (*GGA*), despite getting rid of part of the overestimation, does not help in here due to the missing description of long range dispersive interactions. Indeed *GGA* functionals yield adverse adsorption energies of graphene [20], in the sense that a system where graphene is fully separated to the metal surface is energetically preferred. This is also the case when using meta-*GGA* functionals, yet to a lesser extent [21]. Hybrid functionals, providing excellent description of the thermochemistry of main group molecules, are unadvised, because of their failure in treating largely delocalized systems, such as transition metals and graphene [22]. Calculations within the Random Phase Approximation (*RPA*) were suggested as a good choice [23] to model graphene-metal systems. However, on the one hand, these are computationally too expensive for many practical systems, and, on the other hand, *RPA* yields physisorbed and chemisorbed situations with similar adsorption energy, for which there is no experimental evidence, *i.e.* it appears that *RPA* overestimates the binding strength for physisorbed situations.

Thus, the best approach to describe graphene/Ni(111) and similar systems is to employ *GGA* *DFT* including dispersion terms through one of the currently available methods to cure the lack of long range dispersive interactions. Many functionals and corrections evolved over the last decade, since more sophisticated approaches are still computationally limited for such a system and *ad hoc* solutions like single-shot, *i.e.* non self-consistent *RPA* seem not to be successful for this challenging example.

Most of (semi-empirical) van der Waals corrections (*vdW*) can be categorized into two different approaches, namely the *i*) (non-local) van der Waals functionals (*vdW-DFT*) and *ii*) energy corrections, aimed at accounting for dispersion terms, directly added to the ground state energy

determined by standard GGA functionals (DFT-D methods). The validation of such newly developed vdW-DFT functionals or DFT-D corrections has been matter of recent investigations [8,24]. However, a systematic investigation, with a fair comparison of methodologies, is still lacking in this evolving field. We herein provide a systematic assessment of the recent flavors of the most successfully applied DFT-D methods of Grimme [25] and Tkatchenko [26]. To this end, we chose the graphene/Ni(111) system already described, comparing structure, energy, and bandstructure of the physisorbed and chemisorbed conformations —bridge-top and top-fcc— obtained by these methods, relating these results to earlier works, spanning a wide range of vdW-DFT functionals and DFT-D corrections.

2 Computational details

Three adsorption conformations for graphene adsorbed on the Ni(111) surface have been studied; namely the so-called top-fcc and bridge-top chemisorbed situations, and the hcp-fcc physisorbed situation, see Fig. 1. A representative GGA functional, the Perdew-Burke-Erzenhof (*PBE*) [27], has been used as the basis for the studied DFT-D corrections, given its appropriate description of transition metals [19] as well as of graphene [8] and, in particular, matching the interatomic experimental distance of bulk Ni. Spin-polarized DFT calculations were performed with the VASP 5.3.5 calculation package [28], using the Projector Augmented Wave (*PAW*) method to treat core electrons and their interaction with valence electrons [29]. A plane-wave basis set has been used with kinetic energy cut-off of 415 eV, which has been found to yield optimized results in previous works [8,9,19]. The reciprocal space has been sampled with a $7\times 7\times 1$ Monkhorst-Pack [30] \mathbf{k} -point grid, bandstructures have been obtained using a $9\times 9\times 1$ \mathbf{k} -points grid. Geometry optimizations have been considered converged once forces acting on relaxed atoms have become smaller than $0.03 \text{ eV } \text{\AA}^{-1}$. The tetrahedron smearing by Blöchl was used for the electronic convergence [31].

All tested vdW corrections are based on pair-wise interactions dependent on C_6 coefficients and atomic radii R_0 for each species, which is damped by some function for small interatomic distances, see Ref. [25] for details. The Grimme D2 correction was later re-parameterized, with C_6 coefficients becoming geometry-dependent, at the toll of adding new adjustment parameters S_6 , S_8 , and S_R [32]. In addition, damping the vdW contribution not to zero but a finite small value, as proposed by Becke-Jonson (*BJ*), was introduced [33]. Finally, another modification was proposed later by Andersson (*A*), claiming to replace the C_6 parameters of transition metals by that of the noble gas of the upper row in the periodic table [34], in addition to tightening the valence electron screening.

An alternative approach was presented by Tkatchenko and Scheffler (*TS*). Formally *TS* is based on *D2*, seeking, however, to evaluate C_6 and R_0 for arbitrary systems from the respective coefficients of free atoms *via* the evaluation of the electron density within the studied system [26]. Afterwards, the *TS* correction evolved to include the polarizability variation due to the electric field change of surrounding polarizable atoms in the Self Consistent Screening (*SCS*) *TS-SCS* method [35]. Lately, the *TS* Many Body Dispersion (*MBD*) *TS-MBD* has been proposed to improve the description of the long-range many body nature of correlation and dispersion interactions [36]. Note however that for *TS* methods, *surface* adapted C_6^s , α atomic polarizability, and R_0 parameters [37] are necessary for the description of transition metal substrates. This is, the reference state in *TS surf* is changed from free-atoms to an atoms-in-bulk situation [38]. Note in passing that the alternative, of including vdW effects by one-electron potentials is here not considered [39].

A six layer $p(1\times 1)$ Ni(111) slab unit cell was used in the calculations, where three bottom layers were fixed to PBE bulk-optimized positions —targeting the experimental Ni positions— whereas the three top layers were relaxed —the so-called 3+3 approximation. Note that previous calculations showed very little variations on graphene adsorption energetics and structure by using Ni bulk positions as optimized by the method under scrutiny instead of those obtained by PBE, as working vdW schemes should yield similar values [8]. The adjacent slabs in the direction perpendicular to the surface were separated by a vacuum width of 1 nm. The adsorption energy of graphene on Ni(111), E_{ads} , given per C atom, was calculated as:

$$E_{ads} = [-E_{Gr/Ni} + (E_{Ni} + E_{Gr})]/2 \quad (1)$$

where 2 is the number of carbon atoms in the used unit cell, $E_{Gr/Ni}$ is the total energy of graphene attached to the Ni(111) slab, E_{Ni} that of the pristine Ni(111) slab, and E_{Gr} that of free-standing graphene. Within this definition, the more positive the adsorption energy is, the more exothermic the adsorption. The graphene distance with respect to the Ni(111) surface, $d(Gr-Ni)$, has been calculated from the mean plane of the graphene sheet and the Ni(111) surface plane, respectively. The isolated graphene reference has been calculated using the same unit cell by just removing the Ni layers while allowing graphene contraction/expansion, yet maintaining a minimum vacuum width of 1 nm.

3 Results and discussion

At first, the mismatch between a free-standing graphene sheet and the Ni(111) surface was briefly evaluated. The lattice parameter (a) of graphene and interatomic distance (a) of Ni(111) are listed in Table S1 in the Supplementary Material. The results therein show that all studied methods are well suited to describe the graphene lattice, with errors of, at most, 0.4 pm. In the case of the Ni

bulk, the interatomic distance is almost in perfect agreement with experiment for PBE, D2, and D3. The D3-BJ or A modification yield a small contraction by up to 2.5 pm. The TS based methods results in slightly more acute underestimations of at most 5.8 pm. In summary, the lattice mismatch of $\sim 1\%$ is correctly described applying D2 or D3, with the exception of D3-BJ and A modifications, which yield no mismatch. The TS based method performs reasonably well but with an opposite mismatch in between -0.3 and -1.3%.

Having addressed the graphene and Ni(111) systems separately, the graphene layer has been optimized on top of the Ni(111) slab in bridge-top, top-fcc, and hcp-fcc positions. The adsorption energies E_{ads} and the graphene \leftrightarrow Ni distances, $d(\text{Gr-Ni})$, are listed in Table S2 of the Supplementary Material. The obtained data are compared to accurate experimental values yielding a graphene \leftrightarrow Ni(111) distance of 211 ± 7 pm [40] and precise adsorption energy values derived from graphite attachment to Ni(111) [41] and the graphite exfoliation energy [42], which yield an experimental value of 9.2 ± 2.0 kJ mol $^{-1}$ per C atom [8], yet some margin of error is attributable to this graphene attachment energy, and so, comparison should be made with a broad perspective, lacking experimental data with improved accuracy.

Fig. 2 graphically shows the accuracy of the tested methods computing the Mean Error (ME) with respect to the mean experimental adsorption energy, including the limits of experimental uncertainty. Note that experimentally bridge-top and top-fcc are detected by XPS [9], or observed by STM [10], although a particular preference of one against the other is not clear, so they should be considered as essentially isoenergetic. Nevertheless, a small preference of bridge-top was suggested by XPS data, although this claim must be kept with great caution. This is well observed in Fig. 2; the adsorption energy difference between bridge-top and top-fcc is small for all methods, varying from 0.1 kJ mol $^{-1}$ per C atom (PBE) to 1 kJ mol $^{-1}$ per C atom (A).

Concerning the accuracy of the tested DFT-D methods, PBE clearly underestimates the strength of the graphene/Ni(111) interaction, in line with previous results [8] and inherent to PBE due to the neglect of dispersion terms. As far as vdW corrections on PBE are concerned, it is to highlight the excellent performance of TS-MBD, well within the experimental E_{ads} values, closely followed by D3 correction. Former approximations, i.e. D2 and TS yield adsorption energies close to the experimental thresholds, but faintly overbinding, up to 1.8 and 1.2 kJ mol $^{-1}$ per C atom, respectively. The BJ and A corrections yield a more acute over- and underestimation of the interaction, by up to 4.1 and -2.7 kJ mol $^{-1}$. The most striking, however, is the overestimation of TS-SCS by almost 40 kJ mol $^{-1}$. Note however that such an overestimation can be rationalized in the sense that long-range screening in TS-SCS leads to an anisotropic polarization of the electron density

[35], which is counteracted in three-dimensional isotropic bulk systems, but does not in anisotropic systems such as surfaces, leading to this large overestimation.

Because of this, TS-SCS is suited in describing bulk graphite, as seen in Table S3 of Supplementary Material [43], with exfoliation energies within the experimental range, only 0.3 kJ mol^{-1} far from previous TS-SCS calculations [35], and small variations of 0.4 pm for a cell parameter and 6 pm for interlayer distance with respect the experimental structure. Current calculations at TS and TS-MBD yield exfoliation energies slightly above the experimental range by 3.5 and 1.3 kJ mol^{-1} , although previous calculations with finer \mathbf{k} -point mesh and larger plane-wave basis set show that this discrepancy is reduced by $\sim 2 \text{ kJ mol}^{-1}$ [44,45] and variation with respect graphite interlayer distance of $\sim 5 \text{ pm}$. Overall, any of the here tested methods is well suited in describing bulk graphite, with the caveat of PBE, which yields negative exfoliation energies and interlayer distances overestimated by more than 20 pm , due to the lack of dispersive forces description, and BJ damping, which yields exfoliation energies more than 14 kJ mol^{-1} larger than the experimental values, plus interlayer distances overestimated by $\sim 8 \text{ pm}$.

Back to graphene on Ni(111), note that, as observed in Table S2, the physisorbed hcp-fcc conformation is correctly described by any of the DFT-D corrections as a weaker attached situation, typically about $\sim 4\text{-}10 \text{ kJ mol}^{-1}$ per C atom weaker. No physisorbed state has been experimentally observed for graphene on Ni(111), and has only been foreseen from the theoretical point of view, *i.e.*, this situation *must* be energetically less favorable than any of the bridge-top or top-fcc chemisorbed situations. This is an indication for the failure of the non self-consistent treatment of graphene/Ni(111) within the RPA, yielding almost isoenergetic physisorbed and chemisorbed states [23,46].

Next, we discuss the ME values of the graphene/Ni(111) attachment distance, shown in Fig. 3. It is known that DFT methods usually provide excellent structural data, providing interatomic distances within good accuracy, whereas energetics is more difficult to describe [19,22]. The DFT-D methods tested here are no exception and all methods can be considered within experimental accuracy —note that top-fcc case in D3-BJ targets the mean experimental value, and bridge-top case of TS-SCS and TS-MBD gives a distance just 2 and 1 pm below the experimental range—. Bridge-top conformation distances are usually lower than the average experimental value or computed distances for the top-fcc arrangement. Considering the physisorbed situation hcp-fcc, all methods yield a $d(\text{Gr-Ni})$ distance above 300 pm , as typically observed for the physisorbed states of graphene on noble metals, such as Au [5].

We now focus on the band structure of graphene/Ni(111) comparing the energy levels ϵ of the graphene σ and π bands at Γ and \mathbf{K} points of reciprocal space to experimental Angle-Resolved Photoemission Electron Spectroscopy (*ARPES*) data [9,47] (see Table S4 of the Supplementary Material). More precisely, we compare σ and π bands at Γ , and only the σ band at \mathbf{K} , since the π band around \mathbf{K} , *i.e.*, the Dirac point, is disturbed as above mentioned. An exemplary bandstructure is shown in Fig. 4. Despite the sensitivity of E_{ads} with respect to the applied vdW correction, the bandstructure is well reproduced by any of the tested methods. This is in line with earlier reports demonstrating that the relative level of graphene to substrate bands is determined by the adsorption distance, which only showed small deviations throughout the variety of tested methods [8]. It is worth noting that $\epsilon_{\sigma}^{\Gamma}$ usually is in very good agreement with experiment, with overall deviations of at most 0.1 eV. This deviation is increased when comparing eigenstates lower in energy, with deviations of up to 0.5 and 0.8 eV for ϵ_{π}^{Γ} and $\epsilon_{\sigma}^{\mathbf{K}}$, respectively. Fig. 4 also shows the well-known opening of the Dirac points caused by the graphene \leftrightarrow Ni(111) interactions. Last but not least, the physisorbed state for graphene on Ni(111), would it exist, would feature $\epsilon_{\sigma}^{\Gamma}$, ϵ_{π}^{Γ} , and $\epsilon_{\sigma}^{\mathbf{K}}$ eigenvalues at \sim 3, 9, and 10 eV respectively, as similarly found for graphene on intercalated Au monolayer on Ni(111) [5].

At this point one could try to assess the suitability of DFT, DFT-D, vdW-DFT, and RPA methods in describing the interaction of graphene with Ni(111) surface in particular, and on transition metals in general. To discern over the archipelago of data found in the literature, the top-fcc conformation has been chosen, as it happens to be a conformation in common for the full set of literature, see Table S2 in Supplementary Material. A comparison for E_{ads} is given in Fig. 5, whereas structural data analyzed in terms of $d(\text{Gr-Ni})$ is provided in Fig. 6. Note beforehand that one must be indulgent in such a comparison since different computational setups were used for the calculations, with different \mathbf{k} -point grid density, plane wave kinetic energy cutoff, or different types of basis sets and pseudopotentials, to name a few, and present tests reveal that these factor may vary E_{ads} by 1-2 kJ mol⁻¹ and $d(\text{Gr-Ni})$ by 2-3 pm. However, general trends can be captured and discussed; see for instance the PBE results, where present and past results [8,48] essentially coincide; this is also the case for D2 and D3 E_{ads} values. A caveat is necessary for the D3 results obtained by Li and coworkers [49], reporting a slightly weaker adsorption, and larger $d(\text{Gr-Ni})$ distances, as shown in Figs. 5 and 6. The authors apparently found the physisorbed state of graphene on top-fcc conformation by D3, whereas PBE and other vdW-DFT found the proper chemisorbed situation. Note that a physisorbed state exists above the chemisorbed ones [9,14,15], and this is exactly the case found for other vdW-DFT methods, such as the revPBE-vdW, rVV10, vdW-DF, vdW-DF2, and

vdW-WFs1-shift —we address the reader to the original papers for further details—. All that said, we may now determine which methods provide results within the experimental accuracy for both E_{ads} and $d(\text{Gr-Ni})$. Neglecting the physisorbed situation of Li and coworkers [49], there are only three methods fulfilling these criteria: The TS-MBD and Grimme D3 methods, and the Rev-vdW-DF2 [50], which relies on using the Becke-86 GGA functional [51] for the vdW-DF2 functional [52]. Note aside that, as previously stated [8], the optB86b-vdW [53] and optB88b-vdW [54] functionals yield energetic data very close to the experimental reported ones, only a few tenths of kJ mol^{-1} away from experimental value limits, and so could be fairly used to investigate this type of systems.

4 Conclusions

To sum up, the performance of modern DFT-D corrections —Grimme D2, D3, BJ damping, and A corrections, as well as TS, TS-SCS, and TS-MBD— applied in conjunction with PBE has been assessed relying on their description of the adsorption of graphene on Ni(111) featuring chemisorbed and physisorbed states, as a paradigm for adsorption on late transition metals. Two experimentally observed chemisorbed states, namely top-fcc and bridge-top, were examined, as well as a hypothetical physisorbed situation (hcp-fcc). Geometric, energetic, and electronic properties of graphene adsorbed on Ni(111), bulk Ni, graphene, and graphite were compared to sets of experimental data. From the results it is clear that all methods are suited to describe graphene \leftrightarrow metal contacts, with the exception of TS-SCS, which yields a sensible binding strength overestimation due to a long-range screening anisotropic polarization.

A survey of present tested methods compared to previous DFT-D corrections, vdW-DFT functionals, as well as RPA shows that fully *ab initio* TS-MBD and semi-empirical Grimme D3 corrections, as well as the Rev-vdW-DF2 functional, are best suited to describe graphene/Ni(111) system providing chemical accuracy, although optB86b-vdW and optB88b-vdW vdW-DFT functionals are fairly close. Note that these results are likely to hold for the adsorption of graphene on other transition metals. However, the suitability of each method should be further validated on other metals with detailed experimental data and a restricted testing of the here presented methods. Present results highlight how different approaches to introduce dispersion in DFT based methods may yield discrepant results, mostly due to the subtle treatment of such a weak interaction. In any case, one must take dispersion related interactions with great caution when studying systems of technologic interest. Along this line, the present survey clears the path for future accurate and affordable theoretical studies of nanotechnologic devices based on graphene-metal contacts.

Acknowledgments This work has been supported by Spanish MINECO CTQ2012-30751 and CTQ2015-64618-R grants, in part by *Generalitat de Catalunya* grants 2014SGR97 and XRQTC, and by the Deutsche Forschungsgemeinschaft through SFB 953. This project has received funding from the EU Horizon 2020 research under the NOMAD Excellence Center (grant Number 676580). Authors are greatly indebted to Alexander Tkatchenko and Thomas Bučko for fruitful discussion. F.V. thanks MINECO for a postdoctoral *Ramón y Cajal* (RyC) research contract (RYC-2012-10129). F.I. acknowledges additional support from the 2015 ICREA Academia Award for Excellence in University Research.

Fig. 1 Side and top views on graphene adsorbed on Ni(111) in bridge-top (left), hcp-fcc (middle), and top-fcc (right) conformations. Violet spheres represent carbon atoms, whereas nickel atoms are colored with diverse tones to differentiate Ni layers.

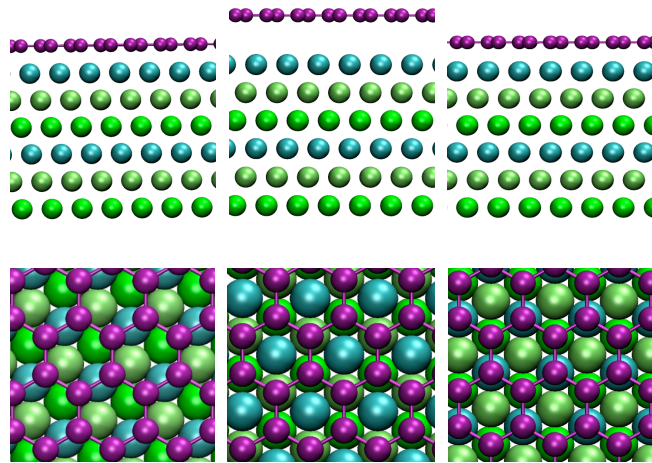


Fig. 2 Mean Error (ME) with respect to averaged experimental results, in kJ mol^{-1} , of the adsorption energy (E_{ads}) of graphene on Ni(111) at bridge-top (blue bars) and top-fcc (green bars) for PBE and various DFT-D schemes. Dashed horizontal lines indicate the experimental deviation.

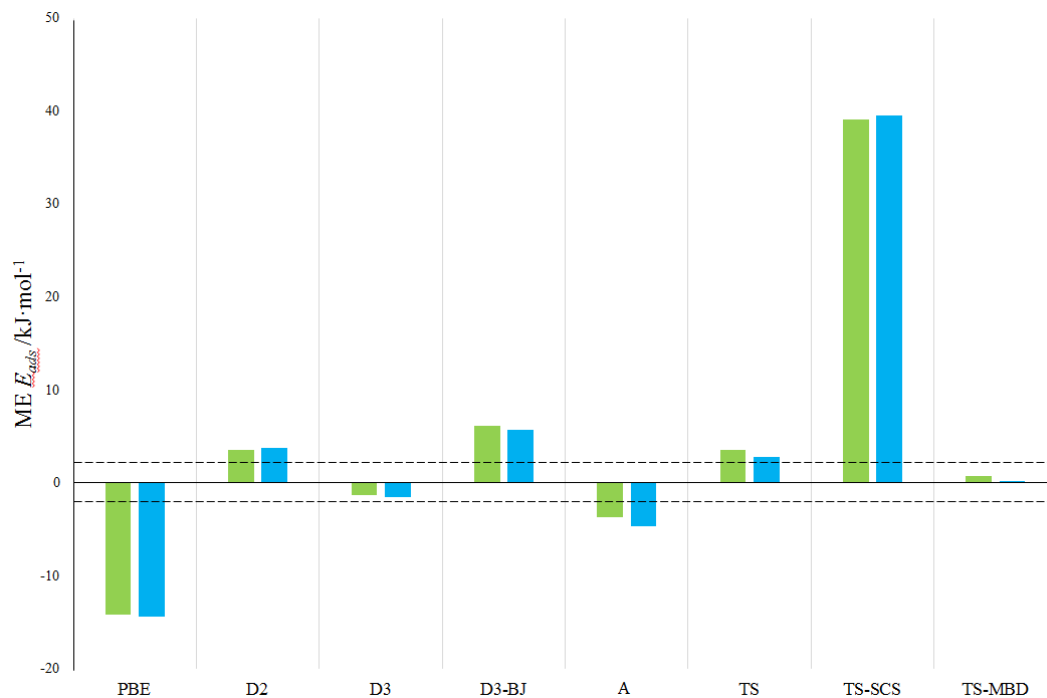


Fig. 3 Mean Error (*ME*), in pm, for $d(\text{Gr-Ni})$ of graphene attached on Ni(111) at bridge-top (pink bars) and top-fcc (orange bars) as obtained at PBE level and including any of the studied DFT-D dispersive forces corrections.

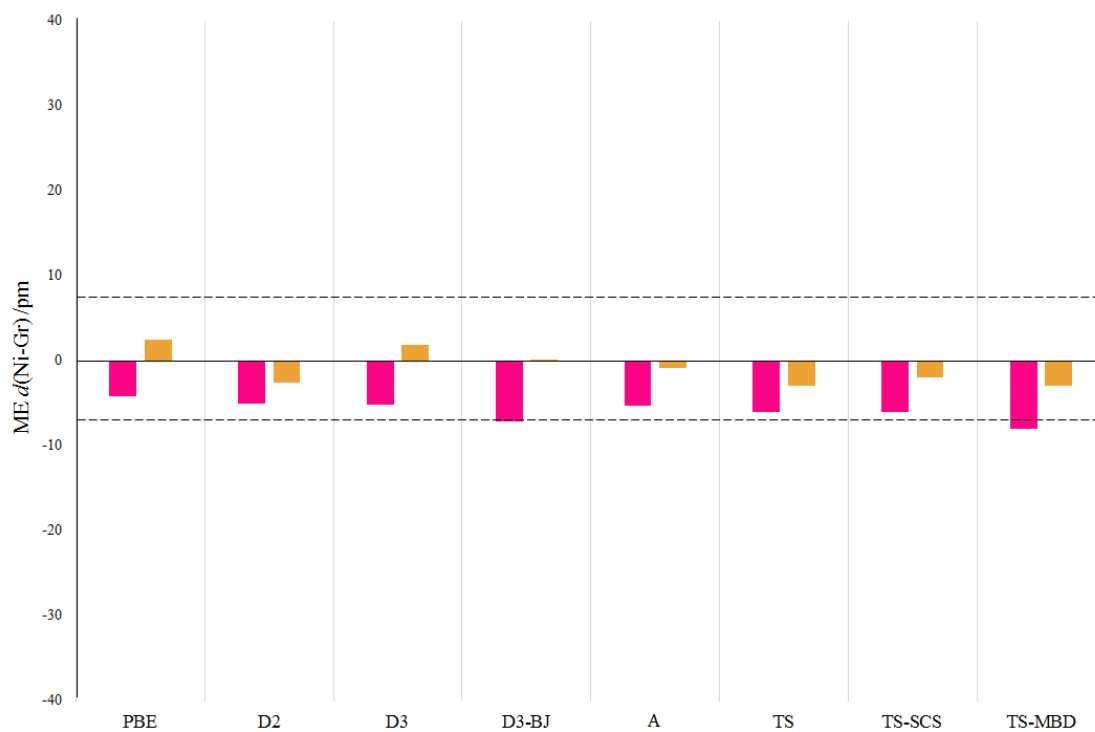


Fig. 4 Bandstructure of graphene adsorbed on Ni(111) in the bridge-top conformation as predicted by PBE. The contributions of graphene C s and p orbitals to bands are colored violet and pink, respectively. The points in bandstructures whose energy value are analyzed in detail are marked by green circles. Zero energy is here the Fermi energy.

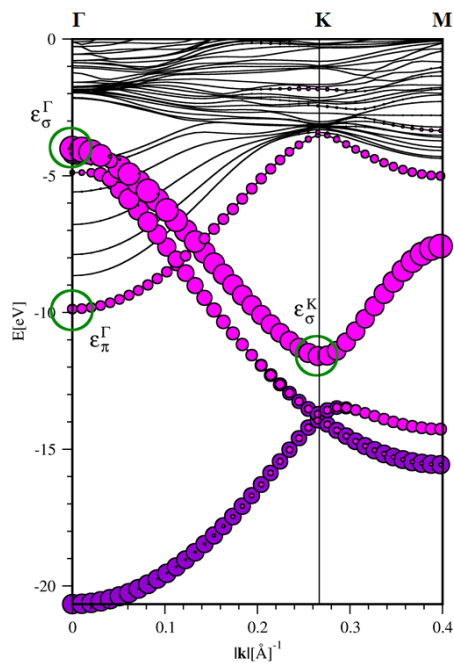


Fig. 5 Mean Error (ME), in kJ mol^{-1} , for the adsorption energy E_{ads} of graphene attached to Ni(111) in the top-fcc conformation as obtained with different DFT, DFT-D, vdW-DFT, and RPA methods. Blue bars are present results, whereas green bars are values from previous studies. See Table S1 in Supplementary Material for further details. ^a Ref. [8], ^b Ref. [48], ^c Ref. [55], ^d Ref. [49], ^e Ref. [23], ^f Ref. [56], ^g Ref. [57], ^h Ref. [58], ⁱ Ref. [50], ^j Ref. [21], ^k Ref. [59], ^l Ref. [46].

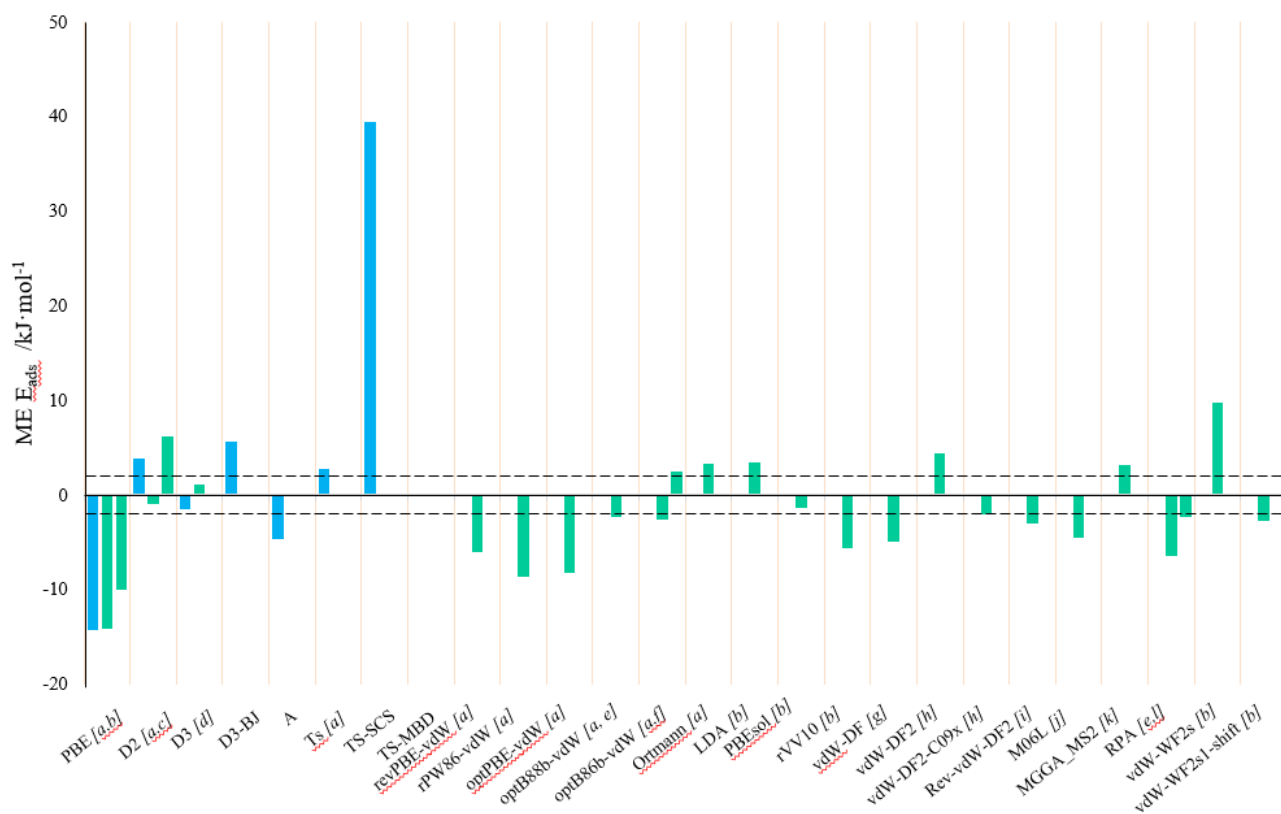
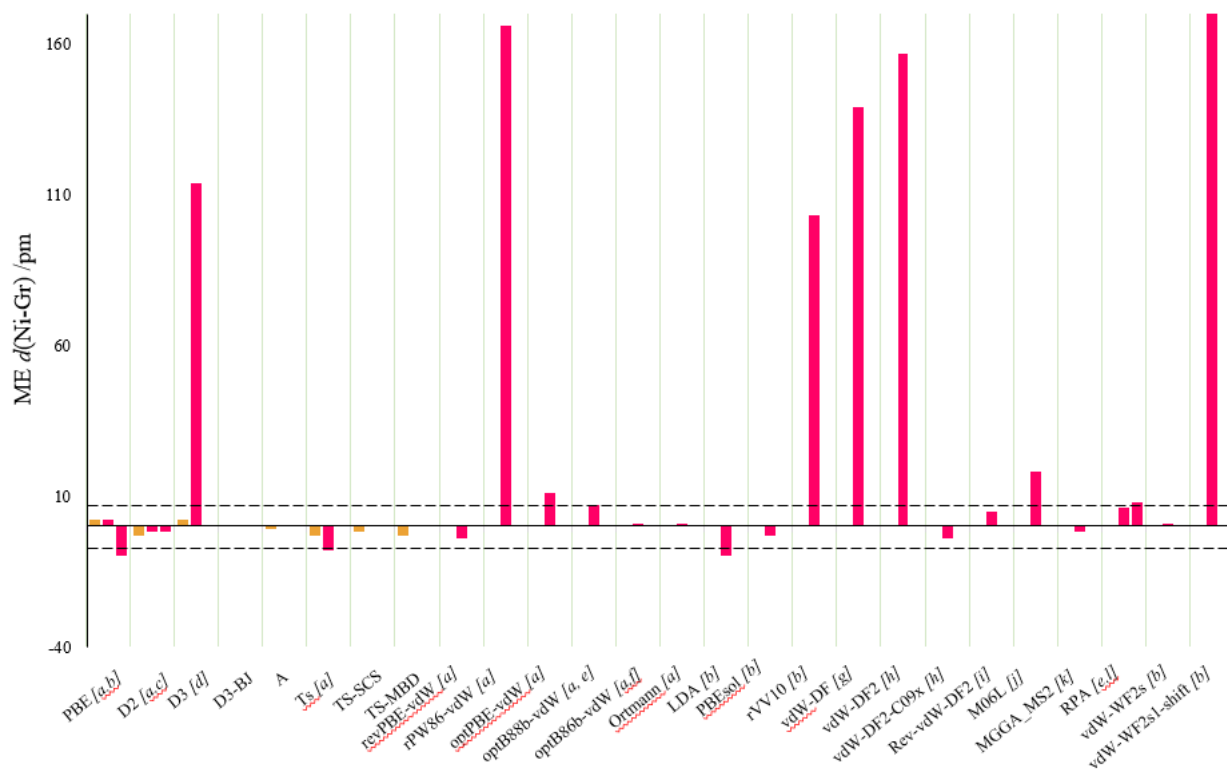


Fig. 6 Mean Error (ME), in pm, for the distance $d(\text{Gr-Ni})$ of graphene attached to Ni(111) in the top-fcc conformation as obtained with different DFT, DFT-D, vdW-DFT, and RPA methods. See Table S1 in Supplementary Material for further details. Orange bars are present results, whereas red bars are values from previous works. References as in Fig. 5.



References

1. Novoselov KS, Geim AK, Morozov SV, Jiang D, Zhang Y, Dubonos SV, Grigorieva IV, Firsov AA (2004) *Science* 306:666
2. N'Diaye AT, Bleikamp S, Feibelman PJ, Michely T (2006) *Phys Rev Lett* 97:215501
3. Marchini S, Günther S, Wintterlin J (2007) *Phys Rev B* 76:075429
4. Vázquez de Parga AL, Calleja F, Borca B, Passeggi Jr. MCG, Hinarejos JJ, Guinea F, Miranda R (2008) *Phys Rev Lett* 100:056807
5. Koch RJ, Weser M, Zhao W, Viñes F, Gotterbarm K, Kozlov SM, Höfert O, Ostler M, Papp C, Gebhardt J, Steinrück HP, Görling A, Seyller T (2012) *Phys Rev B* 86:075401
6. Kim KS, Zhao Y, Jang H, Lee SY, Kim JM, Kim KS, Ahn JH, Kim P, Choi JY, Hong BH (2009) *Nature* 457:706
7. Varyjhalov A, Sánchez-Barriga J, Shikin AM, Biswas C, Vescovo E, Rybkin A, Marchenko D, Reader O (2008) *Phys Rev Lett* 101:157601
8. Janthon P, Viñes F, Kozlov SM, Limtrakul J, Illas F (2013) *J Chem Phys* 138:244701
9. Zhao W, Kozlov SM, Höfert O, Gotterbarm K, Lorenz MPA, Viñes F, Papp C, Görling A, Steinrück HP (2011) *J Phys Chem Lett* 2:759
10. Bianchini F, Patera LL, Peressi M, Africh C, Comelli G (2014) *J Phys Chem Lett* 5:467
11. Shon NH, Ando T (1998) *J Phys Soc. Japan* 67:2421
12. Ando T, Zheng Y, Suzuura H (2002) *J Phys Soc of Japan* 71:1318
13. Uchoa B, Lin CY, Castro Neto AH (2008) *Phys Rev B* 77:035420
14. Kozlov SM, Viñes F, Görling A (2012) *J Phys Chem C* 116:7360
15. Gebhardt J, Viñes F, Görling A (2012) *Phys Rev B* 86:195431
16. Varykhalov A, Marchenko D, Sánchez-Barriga J, Scholz MR, Verberck B, Trauzettel B, Wehling TO, Laubschat C (2008) *Phys Rev X* 2:107602
17. Mura M, Gulans A, Thonhauser T, Kantorovich L (2010) *Phys Chem Chem Phys* 12:4759 (2010).
18. Sony P, Puschnig P, Nabok D, Ambrosch-Draxl C (2007) *Phys Rev Lett* 99:176401
19. Janthon P, Kozlov SM, Viñes F, Limtrakul J, Illas F (2013) *J Chem Theory Comput* 9:1631
20. Fuentes-Cabrera M, Baskes MI, Melechko AV, Simpson ML (2008) *Phys Rev B* 77:035405
21. Andersen M, Hornekaer L, Hammer B (2012) *Phys Rev B* 86:085405
22. Janthon P, Luo S, Kozlov SM, Viñes F, Limtrakul J, Truhlar DG, Illas F (2014) *J Chem Theory Comput* 10:3832

-
23. Mittendorfer F, Garhofer A, Redinger J, Kilmeš J, Harl J, Kresse G (2011) *Phys Rev B* 84:201401
 24. Zhang WB, Chen C, Tang PY (2014) *J Chem Phys* 141:044708
 25. Grimme S (2006) *J Comput Chem* 27:1787
 26. Tkatchenko A, Scheffler M (2009) *Phys Rev Lett* 102:073005
 27. Perdew JP, Burke K (1996) *Phys Rev Lett* 77:3865
 28. Kresse G, Furthmüller J (1996) *Comput Mater Sci* 6:15
 29. Note that PAW pseudopotentials released in VASP 5.2 version were used for TS related DFT-D corrections.
 30. Monkhorst HJ, Pack JD (1976) *Phys Rev B* 13:5188
 31. Blöchl PE, Jepsen O, Andersen OK (1994) *Phys Rev B* 49:16223
 32. Grimme S, Antony J, Ehrlich S, Krieg S (2010) *J Chem Phys* 132:154104
 33. Grimme S, Ehrlich S, Goerigk L (2011) *J Comp Chem* 32:1456
 34. Andersson MP (2013) *J Theo Chem* 2013:327839
 35. Bučko T, Lebègue S, Hafner J, Ángyán JG (2013) *Phys Rev B* 87:064110
 36. Ambrosetti A, Reilly AM, DiStasio Jr. RA, Tkatchenko A (2014) *J Chem Phys* 140:18A508
 37. Ruiz V, Liu W, Zojer E, Scheffler M, Tkatchenko A (2012) *Phys Rev Lett* 108:146103
 38. For Ni, C^6 , α , and R_0 values are 59, 10.2, and 2.28 atomic units, respectively.
 39. Grimme S (2011) *WIREs Comput Mol Sci* 1:211
 40. Gamo Y, Nagashima A, Wakabayashi M, Terai M, Oshima C (1997) *Surf Sci* 374:61
 41. Shelton JC, Patil HR, Blakely JM (1974) *Surf Sci* 43:493
 42. Zacharia R, Ulbricht H, Hertel T (2004) *Phys Rev B* 69:155406
 43. As for bulk Ni, a $7 \times 7 \times 7$ **k**-points grid was used in [these](#) calculations.
 44. Gao W, Tkatchenko A (2015) *Phys Rev Lett* 114: 096101
 45. Bučko T, Lebègue S, Gould T, Ángyán JG (2016) *J Phys Condens Matter* 28: 045201
 46. Olsen T, Thygesen KS (2012) [Phys Rev B](#) 87:075111
 47. Grüneis A (2013) *J Phys Condens Matter* 25:043001
 48. Silvestrelli PL, Ambrosetti A (2015) *Phys Rev B* 91:195405
 49. Li X, Feng J, Wang E, Meng S, Kilmeš J, Michaelides A (2012) *Phys Rev B* 85:085425
 50. Hamada I (2014) *Phys Rev B* 89:121103
 51. Becke AD (1986) *J Chem Phys* 85:7184
 52. Wellendorff J, Lundgaard KT, Mogelhoj A, Petzold V, Landis DD, Nørskov JK, Bligaard T, Jacobsen KW (2012) *Phys Rev B* 85:235149

-
53. Klimeš J, Bowler DR, Michaelides A (2011) Phys Rev B 83:195131
 54. Klimeš J, Bowler DR, Michaelides A (2012) J Phys Condens Matter 22:022201
 55. Hasegawa M, Nishidate K, Hosokai T, Yoshimoto N (2013) Phys Rev B 87:085439
 56. Zhang WB, Chen C, Tang PY (2014) J Chem Phys 141:044708
 57. Vanin M, Mortensen JJ, Kelkkanen AK, Garcia-Lastra JM, Thygesen KS, Jacobsen KW (2010) Phys Rev B 81:081408
 58. Hamada I, Otani M (2010) Phys Rev B 82:153412
 59. Sun J, Entani S, Fang Y, Haunschild R, Perdew P (2013) Phys Rev Lett 111:106401