



FIRST RECORD OF THE INVASIVE SEED BEETLE *MEGABRUCHIDIUS TONKINEUS* (COLEOPTERA, CHRYSOMELIDAE, BRUCHINAE) IN CROATIA

IVAN KURTEK, ŽELJKO ZAHIROVIĆ, NATAŠA TURIĆ, IVANA VRUĆINA,
GORAN VIGNJEVIĆ, ENRIH MERDIĆ & MIRTA SUDARIĆ BOGOJEVIĆ

Department of Biology, Josip Juraj Strossmayer University of Osijek, Cara Hadrijana 8/A,
31000 Osijek, Croatia (e-mail: ivan.kurtek@gmail.com)

Kurtek, I., Zahirović, Ž., Turić, N., Vručina, I., Vignjević, G., Merdić, E. & Sudarić Bogojević, M.: First record of the invasive seed beetle *Megabruchidius tonkineus* (Coleoptera, Chrysomelidae, Bruchinae) in Croatia. *Nat. Croat.*, Vol. 26, No. 1, 109–115, Zagreb, 2017.

The invasive seed beetle *Megabruchidius tonkineus* (Pic, 1904) is an agricultural pest native to the east Asian region that was first recorded in Europe (Germany) in the 1980s. There are further recent reports of this species from Bulgaria, France, Hungary, Russia, Serbia and Switzerland. *Megabruchidius tonkineus* resides in the seed pods of *Gleditsia triacanthos* L. (Fabaceae) and is recorded for the first time in Croatia in our study. The general morphological, biological and distributional features of this invasive species are given.

Keywords: *Megabruchidius tonkineus*, invasive species, new record, seed pods, Croatia

Kurtek, I., Zahirović, Ž., Turić, N., Vručina, I., Vignjević, G., Merdić, E. & Sudarić Bogojević, M.: Prvi nalaz invazivne vrste sjemenarki *Megabruchidius tonkineus* (Coleoptera, Chrysomelidae, Bruchinae) u Hrvatskoj. *Nat. Croat.*, Vol. 26, No. 1, 109–115, Zagreb, 2017.

Invazivna vrsta sjemenarki porijeklom iz orijentalne Azije *Megabruchidius tonkineus* (Pic, 1904), nađena je po prvi puta u Hrvatskoj u mahunama gledičije (*Gleditsia triacanthos* L.). Prvi nalaz ove vrste u Europi zabilježen je 80-ih godina prošloga stoljeća u Njemačkoj, međutim odnedavno postoje dokazi da se ta vrsta ustalila u Bugarskoj, Francuskoj, Mađarskoj, Srbiji i Švicarskoj. U radu su prikazana osnovna morfološka i biološka obilježja vrste kao i njezina rasprostranjenostna području Istočne Hrvatske.

Ključne riječi: *Megabruchidius tonkineus*, invazivna vrsta, novi nalaz, mahune, Hrvatska

INTRODUCTION

Bruchinae, or seed beetles, are presently assigned to the family *Chrysomelidae* (ANTON, 2010; GYÖRGY & GERMANN, 2012). Their larvae develop in the seeds of plants, mostly Fabaceae. Several species have considerable agricultural importance, because their host plants are grown for human food or livestock fodder. The food trade plays important role in the world economy, but whenever food is traded, there is always a chance of foreign pests being introduced. In these days, there are frequent cases of unintended introduction of insect species with seeds coming from abroad but in most cases these events do not lead to the establishment of the newcomers. Unfortunately, this is not the case with *M. tonkineus*. According to the literature, this beetle was probably introduced to Eastern Europe by Vietnamese workers importing white beans from Asia (DELOBEL & DELOBEL, 2006, 2008). This invasive species was first recorded in Eastern Germany in

1980. According to this record *M. tonkineus* failed to survive in Europe at that time), but after two decades there were several reports across Europe, from: Hungary (2002), Bulgaria (2007), France (2008), Russia (2011), Switzerland and Serbia (2012) (WENDT, 1980; JERMY *et al.*, 2002; JERMY & SZENTESI, 2003; WITTENBERG *et al.*, 2006; STOJANOVA, 2007; YUS RAMOS, 2009; GYÖRGY & GERMANN, 2012). In all these countries *M. tonkineus* had infested the seed pods of the American tree honey locust (*Gleditsia triacanthos*), planted as a decorative plant all over Europe for more than 300 years (GENCSI & VANCSURA, 1992). The native habitat of this beetle is east Asia where it develops in the seeds of *Gleditsia australis*, *Dolichos lablab* and *Tagetes sp.* (SOUTHGATE, 1979; BOROWIEC, 1984; GYÖRGY, 2007). The unique situation in Europe was that an Asian invasive species was feeding on American tree. It is clear that *M. tonkineus* can easily modify its feeding habits and adapt to new environments and climate changes, and there is cause for concern as to what will happen if this beetle starts consuming other food sources, including some economically important crops (GAVRILOVIĆ & SAVIĆ, 2013; PEŠIĆ, 2015b). Here we report the first finding of *M. tonkineus* and its distribution in Eastern Croatia.

MATERIALS AND METHODS

The fieldwork was carried out from January to February 2016. *Gleditsia triacanthos* seed pods were collected from 22 sites, which are shown in Tab. 1. On each site around 30 seed pods were collected from the ground. The available evidence suggests that seed pods that have fallen to the ground are a natural incubator for *M. tonkineus* (BOROWIEC, 1984), and can be easily recognized by the specific emergence holes (Fig. 1). In the laboratory, seed pods were opened and searched for eggs, larvae or adults. Specimens were studied with an Olympus SZX16 stereoscopic microscope; photographs were taken with an Olympus DP25 camera. The images were processed by Cell'D imaging software. Books and papers that describe *M. tonkineus* were used for determination (SOUTHGATE, 1979; BOROWIEC, 1984; GYÖRGY, 2007; STOJANOVA, 2007; KOROTYAEV, 2011). After determination, some pod remains were transferred into insect cages in order to see whether adult specimens would be hatched.

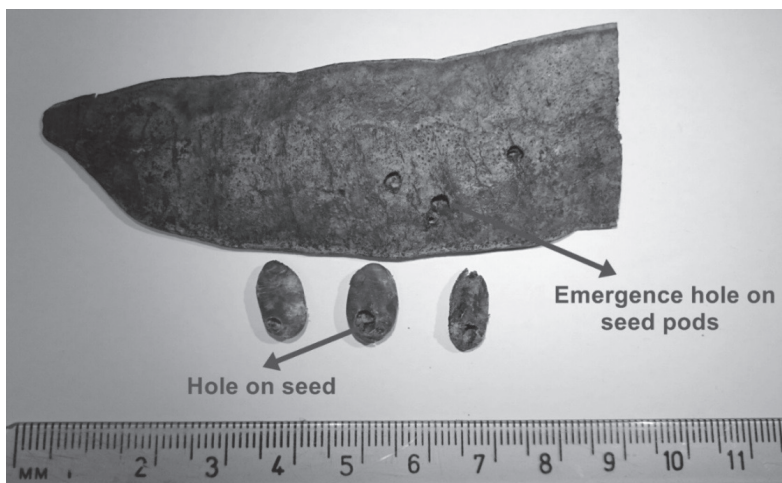


Fig. 1. Emergence holes on *G. triacanthos* seed pods

Tab. 1: Sampling sites and GPS location

no	Location name	GPS	no	Location name	GPS
1	Osijek 1	45°35'42.77"S, 18°44'28.54"E	12	Mlaka Antinska	45°22'43.35"S, 18°46'22.06"E
2	Osijek 2	45°33'15.68"S, 18°42'37.72"E	13	Požega	45°20'45.09"S, 17°41'17.88"E
3	Darda	45°37'12.59"S, 18°41'16.96"E	14	Trenkovo	45°24'13.98"S, 17°40'5.19"E
4	Čepin 1	45°31'58.27"S, 18°31'54.68"E	15	Koška	45°32'43.48"S, 18°19'31.04"E
5	Čepin 2	45°34'49.76"S, 18°32'51.12"E	16	Nemetin	45°32'19.36"S, 18°47'8.72"E
6	Čepin 3	45°31'46.62"S, 18°35'3.17"E	17	Aljmaš	45°32'46.67"S, 18°59'7.92"E
7	Duga bara	45°32'0.76"S, 18°38'53.22"E	18	Erdut	45°31'41.26"S, 19° 3'56.72"E
8	Čeminac	18°38'53.22"E, 18°40'33.85"E	19	Vukovar	45°19'46.15"S, 19° 2'36.71"E
9	Šećerana	45°47'13.99"S, 18°36'26.25"E	20	Suza	45°46'18.63"S, 18°45'47.77"E
10	Tenja	45°28'40.65"S, 18°45'36.27"E	21	Zmajevac	45°48'22.95"S, 18°49'3.03"E
11	Korog	45°24'49.69"S, 18°45'18.28"E	22	Batina	45°52'59.25"S, 18°52'12.44"E

RESULTS AND DISCUSSION

Megabruchidius tonkineus was first described as *Laria tonkinea* by PIC (1904). The literature did not mention this species of Oriental origin again for 73 years, until WENDT (1980) re-examined it and placed it in the genus *Bruchidius*. Four years later BOROWIEC (1984) established genus *Megabruchidius*, based on the type species *Megabruchidius bifoveolatus*, which was there described as new species. In that paper, *M. tonkineus* was transferred into the genus *Megabruchidius*.

Adults are usually about 3 – 5 mm long. They can be easily recognized by the fair colouration in the dorsum (Fig. 2 a, c). Compared to females, males can be easily distinguished by the presence of a large round spot of short pale hairs on the abdominal sternite (Fig. 2 d), and by a notably convex and almost single-coloured pygidium (Fig. 2 c). Females can be recognized by presence of elongate impression along the edges of the slightly convex pygidium (Fig. 2 a). Also on the females, the hair spot could be confused because of setation of the same density that does not form a hair spot (Fig. 2 b). The first 5 antennomeres are light coloured in both sexes, slightly darker dorsally, while further antennomeres are fully black. The pronotum is elongated, not transverse, without a denticle bordered protrusion in the middle of the lateral margin. The elytra have small basal tubercles. In males the mesotibiae contain no apical denticles or plates; also the apex of metatibia has a mucro, which is typical mark for *M. tonkineus* (Fig. 2 e) (BOROWIEC, 1984; GYÖRGY, 2007; KOROTYAEV, 2011).

When *M. tonkineus* was introduced to Europe, a very unusual situation occurred, in which an invasive Asian species invaded American trees on European soil, which is both remarkable and terrifying because this proves without a doubt that *M. tonkineus* is inherently invasive. In Europe this seed beetle has managed to find a completely new food source and somehow managed to survive the winters, which is remarkable for an insect native to a warmer climate. So far, *M. tonkineus* has prospered in Europe, the reason for which lies in the absence of any natural predators and parasitoids (TORCHIN *et al.*, 2003). This new seed beetle is still not integrated in the European natural food chains. There are also a lot of concerns about *M. tonkineus*, because of its capacity to find other food

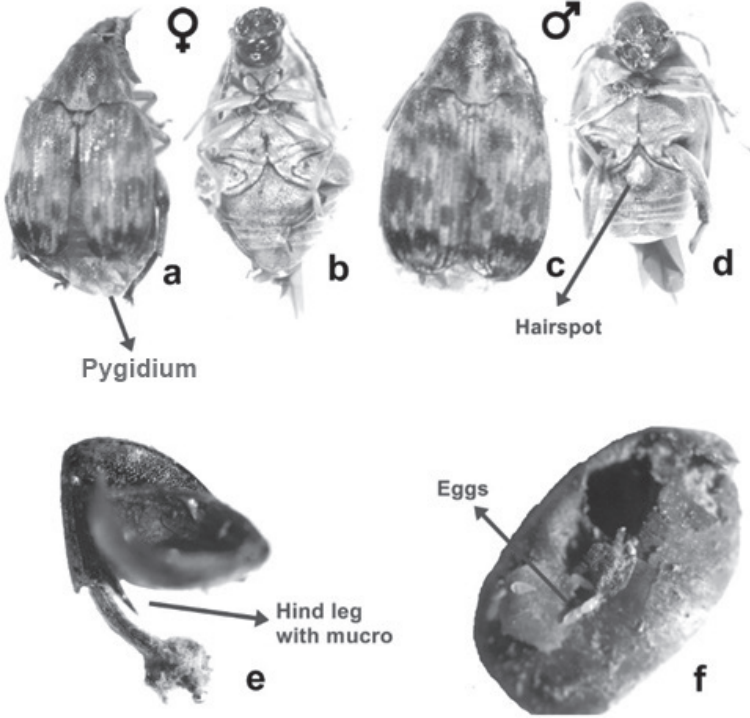


Fig. 2. (a,b) – female: dorsal and ventral view, (c,d) – male: dorsal and ventral view, (e) – hind leg with mucro, (f) – *G. triacanthos* seed with hole

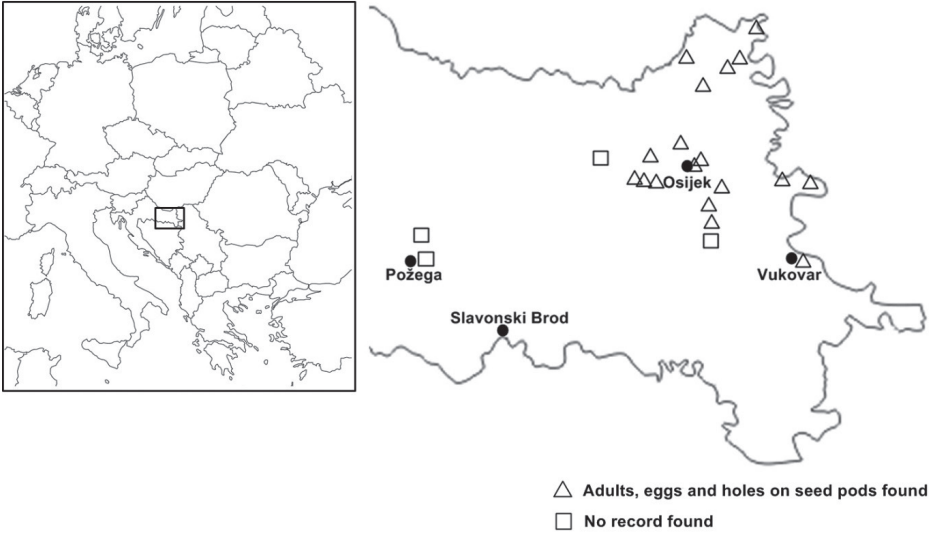


Fig. 3. Sampling sites

Tab. 2: Number of adults and eggs collected from *G. triacanthos* seed pods

Date	Location name	Adults	Holes on seed pods	Eggs	Incubation	Hatched adults
21.01.	Osijek 1	1	✓	✓	✓	4
28.01.	Osijek 2	2	✓	✓	✓	3
01.02.	Darda	3	✓	✓	✓	4
04.02.	Čepin 1	×	✓	✓	✓	9
04.02.	Čepin 2	×	✓	✓	✓	5
04.02.	Čepin 3	3	✓	✓	✓	6
04.02.	Duga bara	×	✓	✓	×	×
12.02.	Čeminac	4	✓	✓	×	×
12.02.	Šećerana	×	✓	✓	×	×
15.02.	Tenja	×	✓	✓	×	×
15.02.	Korog	×	✓	✓	×	×
15.02.	Mlaka Antinska	×	×	×	×	×
17.02.	Požega	×	×	×	×	×
17.02.	Trenkovo	×	×	×	×	×
17.02.	Koška	×	×	×	×	×
18.02.	Nemetin	×	✓	✓	×	×
18.02.	Aljmaš	1	✓	✓	×	×
18.02.	Erdut	×	✓	✓	×	×
18.02.	Vukovar	×	✓	✓	×	×
19.02.	Suza	×	✓	✓	×	×
19.02.	Zmajevac	×	✓	✓	×	×
19.02.	Batina	×	✓	✓	×	×

sources. This could be some other plant from the Fabaceae family, like the pea (*Pisum sativum*) or bean (*Phaseolus vulgaris*), which has agro-economic importance. There are reports that *M. tonkineus* can also feed on vegetables and fruit remains in trash dumps, which offers a clue that the seed beetle could possibly change its food source in near future. Also there are health related concerns, because aggressive substances are produced in the *M. tonkineus* digestion process that can lead to allergic reactions in humans (GAGIĆ SERDAR *et al.*, 2014; PEŠIĆ, 2015a). Because of its great potential to become a very serious pest, it is necessary to survey this invasive seed beetle, especially its feeding habits, abundance, population dynamics and distribution.

Since fieldwork was carried during winter, which is not the best season to collect insect samples, we expected to find only fragments or, at best, dead adult specimens or eggs. In the field we focused on *G. triacanthos* seed pods containing emergence holes. Without any doubt, those emergence holes indirectly confirm the presence of invasive *M. tonkineus* even if adult seed-beetles were not present. This is because various species of *Gleditsia* (including *G. triacanthos*) contain 5-hydroxypipicolic acid

(REHR *et al.*, 1973) and triterpenoid saponins (KONOSHIMA *et al.*, 1995), which are toxic for most non-adapted insects and other seed predators. However, they apparently do not affect *M. tonkineus*. Fourteen adult specimens of *M. tonkineus* were found inside seed pods collected from various locations, three of them were alive; in addition, eggs were found in all seed pods containing emergence holes. Eggs were mostly found on seeds and on the inner seed pod wall just under the emergence holes. According to the literature, the eggs are yellow, elongated and ovoid with one edge pointed, the other rounded. The length is an average of 0.831 mm, and the width an average of 0.317 mm. The egg shell is finely punctate (Fig. 2 f) (BOROWIEC, 1984). Fieldwork results are shown in Tab. 2.

After the presence of adult specimens, eggs too were confirmed. The seed pod remains from the first six locations were transferred into insect cages for incubation in laboratory, moisture in the cages being retained with moist pieces of cotton. Hatched adults additionally confirm the presence of *M. tonkineus*, and the results of incubation are shown in Tab. 2. With this research we manage to cover 21 locations, so this paper also provides an initial view about the distribution of *M. tonkineus* in eastern Croatia (Fig. 3). This map provides initial data about the possible spread of *M. tonkineus* into Croatia from Serbia and Hungary since those countries already have records of this Asian invasive species. Further research is needed to confirm the presence of this invasive species in other parts of Croatia.

Received January 23, 2017

REFERENCES

- ANTON, KW., 2010: Family Bruchinae. LÖB, I. & SMETANA, A. (eds). Catalogue of Palaearctic Coleoptera. Vol. 6. Chrysomeloidea. Stenstrup: Apollo Books, pp 339-353.
- BOROWIEC, L., 1984: Two new genera and species of seed-beetles from the Oriental Region (*Coleoptera*, *Bruchidae*, *Bruchinae*). *Polskie Pismo Entomologiczne* **54**, 115–129.
- DELOBEL, B. & DELOBEL, A., 2006: Dietary specialization in European species groups of seed beetles (*Coleoptera*: *Bruchidae*: *Bruchinae*). *Oecologia* **149** (3), 428–443.
- DELOBEL, P. & DELOBEL, A., 2008: Une nouvelle Bruche asiatique importée en France: *Megabruchidius tonkineus* (Pic, 1904) (*Coleoptera*: *Bruchinae*). *Bulletin de la Société Entomologique de France* **113**(2), 227–229.
- GAGIĆ SERDAR, R., MIHAJLOVIĆ, LJ., PODUŠKA, Z., ĐORDEVIĆ, I., ČEŠLJAR, G., BILIBAJKIĆ, S., STEFANOVIĆ, T., MILOSAVLJEVIĆ, M. & NEVENIĆ, R., 2014: Seed predation in leguminous trees and shrubs: New invasive beetles (*Coleoptera*: *Chrysomelidae*: *Bruchinae*) to Serbian fauna. *Agriculture & forestry*. Vol 60 issue 3, Podgorica, 163- 174.
- GAVRILOVIĆ, B. & SAVIĆ, D., 2013: Invazivne Bruchinae nove za faunu Srbije. Symposium of entomologist of Serbia, Tara, 18-22.11.2013. pp.14.
- GENCSI, L. & VASCURA, R., 1992: *Dendrologia* (Dendrology) – Mezögazda, Budapest, 728pp.
- GYÖRGY, Z., 2007: To the Biology of the Honey Locust Seed Beetle, *Megabruchidius tonkineus* (Pic, 1904) (*Coleoptera*: *Chrysomelidae*: *Bruchinae*). *Folia Entomol. Hung.* **68**, 89–96.
- GYÖRGY, Z. & CHRISTOPH, G., 2012: First record of *Megabruchidius tonkineus* (Pic, 1904) for Switzerland. *Mitteilungen der Schweizerischen Entomologischen Gesellschaft* **85**, 243-249.
- JERMY, T., SZENTESI, Á. & ANTON, KW., 2002: *Megabruchidius tonkineus* (Pic, 1904) (*Coleoptera*: *Bruchidae*) first found in Hungary. *Folia entomologica hungarica* **63**, 49–51.
- JERMY, T. & SZENTESI, Á., 2003: Evolutionary aspects of host plant specialisation a study on bruchids (*Coleoptera*: *Bruchidae*). *Oikos*, **101**, 196–204.
- KONOSHIMA, T., YASUDA, I., KASHIWADA, Y., COSENTINO, LM. & LEE, KH., 1995: Anti-AIDS agents. 21. Triterpenoid saponins as antiHIV principles from fruits of *Gleditsia japonica* and *Gymnocladus chinensis*, and a structure-activity correlation. *Journal of Natural Products* **58**(9), 1372–1377.

- KOROTYAEV, BA., 2011: On Invasion of an East Asian Seed Beetle, *Megabruchidius tonkineus* (Pic, 1904) (Coleoptera, Bruchidae), Developing in *Gleditsia* Seeds, in the Northwest Caucasus. *Entomological Review* **91**(9), 1167–1169.
- PEŠIĆ, S., 2015a: Tajna uspeha *Megabruchidius tonkineus* (Pic, 1904), Ekološka rešenja. X simpozijum entomologa Srbije, Kladovo 23-27.09.2015, Zbornik plenarnih referata I rezimea 3-4.
- PEŠIĆ, S., 2015b: Tajna uspeha *Megabruchidius tonkineus* (Pic, 1904), reproduktivna rešenja. X simpozijum entomologa Srbije, Kladovo 23-27.09.2015, Zbornik plenarnih referata I rezimea 5-6.
- REHR, SS., BELL, EA., JANZEN, DH. & FEENY, PP., 1973: Insecticidal amino acids in legume seeds. *Biochemical Systematics* **1**, 63–67.
- SOUTHGATE, BJ., 1979: Biology of the *Bruchidae*. *Annual Review of Entomology* **24**, 449–473.
- STOJANOVA, A., 2007: *Megabruchidius tonkineus* (Pic, 1904) (*Chrysomelidae: Bruchinae*), a New Seed Beetle to the Bulgarian Fauna. *Acta Zoologica Bulgarica* **59** (1), 109–110.
- TORCHIN, M., LAFERTY, K., DOBSON, A., MCKENZIE, V. & KURIS, A., 2003: Introduced species and their missing parasites. *Nature* **421**, 628–630.
- WENDT, H., 1980: Erstmaliges Auftreten des Vorratsschädling, *Bruchidius tonkineus* (Pic, 1904) in der DDR. *Deutsche Entomologische Zeitschrift* **27**, 317–318.
- WITTENBERG, R., KENIS, M., HÄNGGI, A. & WEBER, E., 2006: Invasive alien species in Switzerland. An inventory of alien species and their threat to biodiversity and economy in Switzerland. CABI Bioscience Switzerland Centre report to the Swiss Agency for Environment, Forests and Landscape. The environment in practice no. 0629. Federal Office for the Environment, Bern, 155 pp.
- YUS RAMOS, R., 2009: Revisión del género *Megabruchidius* Borowiec, 1984 (Coleoptera: Bruchidae) y nuevas citas para Europa. *Boletín de la Sociedad Entomológica Aragonesa* **45**, 371–382.