



# Efficient Algorithms for Non-convex Isotonic Regression through Submodular Optimization

Francis Bach

## ► To cite this version:

Francis Bach. Efficient Algorithms for Non-convex Isotonic Regression through Submodular Optimization. NIPS 2018: Thirty-second Annual Conference on Neural Information Processing Systems, Dec 2018, Montreal, Canada. hal-01569934

**HAL Id: hal-01569934**

**<https://hal.archives-ouvertes.fr/hal-01569934>**

Submitted on 27 Jul 2017

**HAL** is a multi-disciplinary open access archive for the deposit and dissemination of scientific research documents, whether they are published or not. The documents may come from teaching and research institutions in France or abroad, or from public or private research centers.

L'archive ouverte pluridisciplinaire **HAL**, est destinée au dépôt et à la diffusion de documents scientifiques de niveau recherche, publiés ou non, émanant des établissements d'enseignement et de recherche français ou étrangers, des laboratoires publics ou privés.

# Efficient Algorithms for Non-convex Isotonic Regression through Submodular Optimization

Francis Bach

INRIA, Département d'informatique de l'ENS  
Ecole normale supérieure, CNRS, PSL Research University  
Paris, France  
`francis.bach@inria.fr`

July 27, 2017

## Abstract

We consider the minimization of submodular functions subject to ordering constraints. We show that this optimization problem can be cast as a convex optimization problem on a space of uni-dimensional measures, with ordering constraints corresponding to first-order stochastic dominance. We propose new discretization schemes that lead to simple and efficient algorithms based on zero-th, first, or higher order oracles; these algorithms also lead to improvements without isotonic constraints. Finally, our experiments show that non-convex loss functions can be much more robust to outliers for isotonic regression, while still leading to an efficient optimization problem.

## 1 Introduction

Shape constraints such as ordering constraints appear everywhere in estimation problems in machine learning, signal processing and statistics. They typically correspond to prior knowledge, and are imposed for the interpretability of models, or to allow non-parametric estimation with improved convergence rates [1, 2]. In this paper, we focus on imposing ordering constraints into an estimation problem, a setting typically referred to as *isotonic* regression [3, 4, 5], and we aim to generalize the set of problems for which efficient (i.e., polynomial-time) algorithms exist.

We thus focus on the following optimization problem:

$$\min_{x \in [0,1]^n} H(x) \text{ such that } \forall (i,j) \in E, x_i \geq x_j, \quad (1)$$

where  $E \subset \{1, \dots, n\}^2$  represents the set of constraints, which form a directed acyclic graph. For simplicity, we restrict  $x$  to the set  $[0, 1]^n$ , but our results extend to general products of (potentially unbounded) intervals.

As convex constraints, isotonic constraints are well-adapted to estimation problems formulated as convex optimization problems where  $H$  is convex, such as for linear supervised learning problems, with many efficient algorithms for separable convex problems [3, 4, 5, 6], which can thus be used as inner loops in more general convex problems by using projected gradient methods (see, e.g., [7] and references therein).

In this paper, we show that another form of structure can be leveraged. We will assume that  $H$  is *submodular*, which is equivalent, when twice continuously differentiable, to having nonpositive cross second-order derivatives. This notably includes *all* (potentially non convex) separable functions

(that are sums of functions that depend on single variables), but also many other examples (see Section 2).

Minimizing submodular functions on continuous domains has been recently shown to be equivalent to a convex optimization problem on a space of uni-dimensional measures [8], and given that the functions  $x \mapsto \lambda(x_j - x_i)_+$  are submodular for any  $\lambda > 0$ , it is natural that by using  $\lambda$  tending to  $+\infty$ , we recover as well a convex optimization problem; the main contribution of this paper is to provide a simple framework based on stochastic dominance, for which we design efficient algorithms which are based on simple oracles on the function  $H$  (typically access to function values and derivatives). In order to obtain such algorithms, we go significantly beyond [8] by introducing novel discretization algorithms that also provide improvements without any isotonic constraints.

More precisely, we make the following contributions:

- We show in Section 3 that minimizing a submodular function with isotonic constraints can be cast as a convex optimization problem on a space of uni-dimensional measures, with isotonic constraints corresponding to first-order stochastic dominance.
- On top of the naive discretization schemes presented in Section 4, we propose in Section 5 new discretization schemes that lead to simple and efficient algorithms based on zero-th, first, or higher order oracles. They go from requiring  $O(1/\varepsilon^3) = O(1/\varepsilon^{2+1})$  function evaluations to reach a precision  $\varepsilon$ , to  $O(1/\varepsilon^{2+1/2})$  and  $O(1/\varepsilon^{2+1/3})$ .
- Our experiments in Section 6 show that non-convex loss functions can be much more robust to outliers for isotonic regression.

## 2 Submodular Analysis in Continuous Domains

In this section, we review the framework of [8] that shows how to minimize submodular functions using convex optimization.

**Definition.** Throughout this paper, we consider a *continuous function*  $H : [0, 1]^n \rightarrow \mathbb{R}$ . The function  $H$  is said to be *submodular* if and only if [9, 10]:

$$\forall (x, y) \in [0, 1]^n \times [0, 1]^n, H(x) + H(y) \geq H(\min\{x, y\}) + H(\max\{x, y\}), \quad (2)$$

where the min and max operations are applied component-wise. If  $H$  is continuously twice differentiable, then this is equivalent to  $\frac{\partial^2 H}{\partial x_i \partial x_j}(x) \leq 0$  for any  $i \neq j$  and  $x \in [0, 1]^n$  [10].

The cone of submodular functions on  $[0, 1]^n$  is invariant by marginal strictly increasing transformations, and includes all functions that depend on a single variable (which play the role of linear functions for convex functions), which we refer to as *separable* functions.

**Examples.** The classical examples are: (a) any separable function, (b) convex functions of the difference of two components, (c) concave functions of a positive linear combination, (d) negative log densities of multivariate totally positive distributions [11]. See Section 6 for a concrete example.

**Extension on a space of measures.** We consider the convex set  $\mathcal{P}([0, 1])$  of *Radon probability measures* [12] on  $[0, 1]$ , which is the closure (for the weak topology) of the convex hull of all Dirac measures. In order to get an *extension*, we look for a function defined on the set of *products of probability measures*  $\mu \in \mathcal{P}([0, 1])^n$ , such that if all  $\mu_i$ ,  $i = 1, \dots, n$ , are Dirac measures at points  $x_i \in [0, 1]$ , then we have a function value equal to  $H(x_1, \dots, x_n)$ . Note that  $\mathcal{P}([0, 1])^n$  is different from  $\mathcal{P}([0, 1]^n)$ , which is the set of probability measures on  $[0, 1]^n$ .

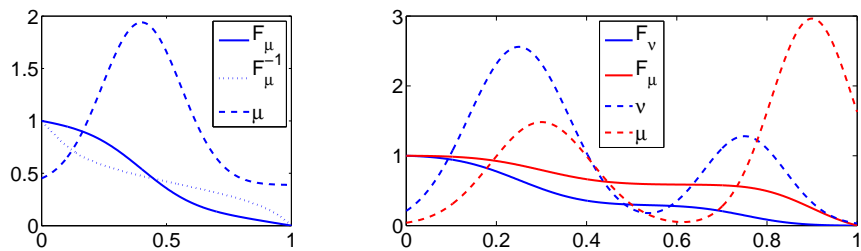


Figure 1: Left: cumulative and inverse cumulative distribution functions with the corresponding density (with respect to the Lebesgue measure). Right: cumulative functions for two distributions  $\mu$  and  $\nu$  such that  $\mu \succcurlyeq \nu$ .

For a probability distribution  $\mu_i \in \mathcal{P}([0, 1])$  defined on  $[0, 1]$ , we can define the (reversed) cumulative distribution function  $F_{\mu_i} : [0, 1] \rightarrow [0, 1]$  as  $F_{\mu_i}(x_i) = \mu_i([x_i, 1])$ . This is a non-increasing left-continuous function from  $[0, 1]$  to  $[0, 1]$ , such that  $F_{\mu_i}(0) = 1$  and  $F_{\mu_i}(1) = \mu_i(\{1\})$ . See illustrations in the left plot of Figure 1.

We can then define the “inverse” cumulative function from  $[0, 1]$  to  $[0, 1]$  as  $F_{\mu_i}^{-1}(t_i) = \sup\{x_i \in [0, 1], F_{\mu_i}(x_i) \geq t_i\}$ . The function  $F_{\mu_i}^{-1}$  is non-increasing and right-continuous, and such that  $F_{\mu_i}^{-1}(1) = \min \text{supp}(\mu_i)$  and  $F_{\mu_i}^{-1}(0) = 1$ . Moreover, we have  $F_{\mu_i}(x_i) \geq t_i \Leftrightarrow F_{\mu_i}^{-1}(t_i) \geq x_i$ .

The extension from  $[0, 1]^n$  to the set of product probability measures is obtained by considering a single threshold  $t$  applied to all  $n$  cumulative distribution functions, that is:

$$\forall \mu \in \mathcal{P}([0, 1]^n), \quad h(\mu_1, \dots, \mu_n) = \int_0^1 H[F_{\mu_1}^{-1}(t), \dots, F_{\mu_n}^{-1}(t)] dt. \quad (3)$$

We have the following properties for a submodular function  $H$ : (a) it is an extension, that is, if for all  $i$ ,  $\mu_i$  is a Dirac at  $x_i$ , then  $h(\mu) = H(x)$ ; (b) it is convex; (c) minimizing  $h$  on  $\mathcal{P}([0, 1]^n)$  and minimizing  $H$  on  $[0, 1]^n$  is equivalent; moreover, the minimal values are equal and  $\mu$  is a minimizer if and only if  $[F_{\mu_1}^{-1}(t), \dots, F_{\mu_n}^{-1}(t)]$  is a minimizer of  $H$  for almost all  $t \in [0, 1]$ . Thus, submodular minimization is equivalent to a convex optimization problem in a space of uni-dimensional measures.

Note that the extension is defined on all tuples of measures  $\mu = (\mu_1, \dots, \mu_n)$  but it can equivalently be defined through non-increasing functions from  $[0, 1]$  to  $[0, 1]$ , e.g., the representation in terms of cumulative distribution functions  $F_{\mu_i}$  defined above (this representation will be used in Section 4 where algorithms based on the discretization of the equivalent obtained convex problem are discussed).

### 3 Isotonic Constraints and Stochastic Dominance

In this paper, we consider the following problem:

$$\inf_{x \in [0, 1]^n} H(x) \text{ such that } \forall (i, j) \in E, x_i \geq x_j, \quad (4)$$

where  $E$  is the edge set of a directed acyclic graph on  $\{1, \dots, n\}$  and  $H$  is submodular. We denote by  $\mathcal{X} \subset \mathbb{R}^n$  the set of  $x \in \mathbb{R}^n$  satisfying the isotonic constraints.

In order to define an extension in a space of measures, we consider a specific order on measures on  $[0, 1]$ , namely *first-order stochastic dominance* [13], defined as follows.

Given two distributions  $\mu$  and  $\nu$  on  $[0, 1]$ , with (inverse) cumulative distribution functions  $F_\mu$  and  $F_\nu$ , we have  $\mu \succcurlyeq \nu$ , if and only if  $\forall x \in [0, 1], F_\mu(x) \geq F_\nu(x)$ , or equivalently,  $\forall t \in [0, 1], F_\mu^{-1}(t) \geq F_\nu^{-1}(t)$ . As shown in the right plot of Figure 1, the densities may still overlap. An equivalent characterization [14, 15] is the existence of a joint distribution on a vector  $(X, X') \in \mathbb{R}^2$  with

marginals  $\mu(x)$  and  $\nu(x')$  and such that  $X \geq X'$  almost surely<sup>1</sup>. We now prove the main proposition of the paper:

**Proposition 1** *We consider the convex minimization problem:*

$$\inf_{\mu \in \mathcal{P}([0,1]^n)} h(\mu) \text{ such that } \forall (i, j) \in E, \mu_i \succcurlyeq \mu_j. \quad (5)$$

*Problems in Eq. (4) and Eq. (5) have the same objective values. Moreover,  $\mu$  is a minimizer of Eq. (5) if and only if  $F_\mu^{-1}(t)$  is a minimizer of  $H$  of Eq. (4) for almost all  $t \in [0, 1]$ .*

**Proof** We denote by  $\mathcal{M}$  the set of  $\mu \in \mathbb{P}([0, 1]^n)$  satisfying the stochastic ordering constraints. For any  $x \in [0, 1]^n$  that satisfies the constraints in Eq. (4), i.e.,  $x \in \mathcal{X} \cap [0, 1]^n$ , the associated Dirac measures satisfy the constraint in Eq. (5). Therefore, the objective value  $M$  of Eq. (4) is greater or equal to the one  $M'$  of Eq. (5). Given a minimizer  $\mu$  for the convex problem in Eq. (5), we have:  $M \geq M' = h(\mu) = \int_0^1 H[F_{\mu_1}^{-1}(t), \dots, F_{\mu_n}^{-1}(t)] dt \geq \int_0^1 M dt = M$ . This shows the proposition by studying the equality cases above.  $\blacksquare$

Alternatively, we could add the penalty term  $\lambda \sum_{(i,j) \in E} \int_{-\infty}^{+\infty} (F_{\mu_j}(z) - F_{\mu_i}(z))_+ dz$ , which corresponds to the unconstrained minimization of  $H(x) + \lambda \sum_{(i,j) \in E} (x_j - x_i)_+$ . For  $\lambda > 0$  big enough<sup>2</sup>, this is equivalent to the problem above, but with a submodular function which has a large Lipschitz constant (and is thus harder to optimize with the iterative methods presented below).

## 4 Discretization algorithms

Prop. 1 shows that the isotonic regression problem with a submodular cost can be cast as a convex optimization problem; however, this is achieved in a space of measures, which cannot be handled directly computationally in polynomial time. Following [8], we consider a polynomial time and space discretization scheme of each interval  $[0, 1]$  (and *not* of  $[0, 1]^n$ ), but we propose in Section 5 a significant improvement that allows to reduce the number of discrete points significantly.

### 4.1 Review of optimization of submodular optimization in discrete domains

All our algorithms will end up minimizing approximately a submodular function  $F$  on  $\{0, \dots, k-1\}^n$ , that is, which satisfies Eq. (2). Isotonic constraints will be added in Section 4.2.

Following [8], this can be formulated as minimizing a convex function  $f_\downarrow$  on the set of  $\rho \in [0, 1]^{n \times (k-1)}$  so that for each  $i \in \{1, \dots, n\}$ ,  $(\rho_{ij})_{j \in \{1, \dots, k-1\}}$  is a non-increasing sequence (we denote by  $\mathcal{S}$  this set of constraints) corresponding to the cumulative distribution function. For any feasible  $\rho$ , a subgradient of  $f_\downarrow$  may be computed by sorting all  $n(k-1)$  elements of the matrix  $\rho$  and computing at most  $n(k-1)$  values of  $F$ . An approximate minimizer of  $F$  (which exactly inherits approximation properties from the approximate optimality of  $\rho$ ) is then obtained by selecting the minimum value of  $F$  in the computation of the subgradient. Projected subgradient methods can then be used, and if  $\Delta F$  is the largest absolute difference in values of  $F$  when a single variable is changed by  $\pm 1$ , we obtain an  $\varepsilon$ -minimizer (for function values) after  $t$  iterations, with  $\varepsilon \leq nk\Delta F/\sqrt{t}$ . The projection step is composed of  $n$  simple separable quadratic isotonic regressions with chain constraints in dimension  $k$ , which can be solved easily in  $O(nk)$  using the pool-adjacent-violator algorithm [3]. Computing a subgradient requires a sorting operation, which is thus  $O(nk \log(nk))$ . See more details in [8].

<sup>1</sup>Such a joint distribution may be built as the distribution of  $(F_\mu^{-1}(T), F_\nu^{-1}(T))$ , where  $T$  is uniformly distributed in  $[0, 1]$ .

<sup>2</sup>A short calculation shows that when  $H$  is differentiable, the first order-optimality condition (which is only necessary here) implies that if  $\lambda$  is strictly larger than  $n$  times the largest possible partial first-order derivative of  $H$ , the isotonic constraints have to be satisfied.

Alternatively, we can minimize  $f_{\downarrow}(\rho) + \frac{1}{2}\|\rho\|_F^2$  on the set of  $\rho \in \mathbb{R}^{n \times (k-1)}$  so that for each  $i$ ,  $(\rho_{ij})_j$  is a non-increasing sequence, that is,  $\rho \in \mathcal{S}$  (the constraints that  $\rho_{ij} \in [0, 1]$  are dropped). We then get a minimizer  $z$  of  $F$  by looking for all  $i \in \{1, \dots, n\}$  at the largest  $j \in \{1, \dots, k-1\}$  such that  $\rho_{ij} \geq 0$ . We take then  $z_i = j$  (and if no such  $j$  exists,  $z_i = 0$ ). A gap of  $\varepsilon$  in the problem above, leads to a gap of  $\sqrt{\varepsilon nk}$  for the original problem (see more details in [8]). The subgradient method in the primal, or Frank-Wolfe algorithm in the dual may be used for this problem. We obtain an  $\varepsilon$ -minimizer (for function values) after  $t$  iterations, with  $\varepsilon \leq \Delta F/t$ , which leads for the original submodular minimization problem to the same optimality guarantees as above, but with a faster algorithm in practice. See the detailed computations and comparisons in [8].

## 4.2 Naive discretization scheme

Following [8], we simply discretize  $[0, 1]$  by selecting the  $k$  values  $\frac{i}{k-1}$  or  $\frac{2i+1}{2k}$ , for  $i \in \{0, \dots, k-1\}$ . If the function  $H : [0, 1]^n$  is  $L_1$ -Lipschitz-continuous with respect to the  $\ell_1$ -norm, that is  $|H(x) - H(x')| \leq L_1\|x - x'\|_1$ , the function  $F$  is  $(L_1/k)$ -Lipschitz-continuous with respect to the  $\ell_1$ -norm (and thus we have  $\Delta F \leq L_1/k$  above). Moreover, if  $F$  is minimized up to  $\varepsilon$ ,  $H$  is optimized up to  $\varepsilon + nL_1/k$ .

In order to take into account the isotonic constraints, we simply minimize with respect to  $\rho \in [0, 1]^{n \times (k-1)} \cap \mathcal{S}$ , with the additional constraint that for all  $j \in \{1, \dots, k-1\}$ ,  $\forall (a, b) \in E$ ,  $\rho_{a,j} \geq \rho_{b,j}$ . This corresponds to additional constraints  $\mathcal{T} \subset \mathbb{R}^{n \times (k-1)}$ .

Following Section 4.1, we can either choose to solve the convex problem  $\min_{\rho \in [0, 1]^{n \times k} \cap \mathcal{S} \cap \mathcal{T}} f_{\downarrow}(\rho)$ , or the strongly-convex problem  $\min_{\rho \in \mathcal{S} \cap \mathcal{T}} f_{\downarrow}(\rho) + \frac{1}{2}\|\rho\|_F^2$ . In the two situations, after  $t$  iterations, that is  $tnk$  accesses to values of  $H$ , we get a constrained minimizer of  $H$  with approximation guarantee  $nL_1/k + nL_1/\sqrt{t}$ . Thus in order to get a precision  $\varepsilon$ , it suffices to select  $k \geq 2nL_1/\varepsilon$  and  $t \geq 4n^2L_1^2/\varepsilon^2$ , leading to an overall  $8n^4L_1^3/\varepsilon^3$  accesses to function values of  $H$ , which is the same as obtained in [8] (except for an extra factor of  $n$  due to a different definition of  $L_1$ ).

## 4.3 Improved behavior for smooth functions

We consider the discretization points  $\frac{i}{k-1}$  for  $i \in \{0, \dots, k-1\}$ , and we assume that all first-order (resp. second-order) partial derivatives are bounded by  $L_1$  (resp.  $L_2^2$ ). In the reasoning above, we may upper-bound the infimum of the discrete function in a finer way, going from  $\inf_{x \in \mathcal{X}} H(x) + nL_1/k$  to  $\inf_{x \in \mathcal{X}} H(x) + \frac{1}{2}n^2L_2^2/k^2$  (by doing a Taylor expansion around the global optimum, where the first-order terms are always zero, either because the partial derivative is zero or the deviation is zero). We now select  $k \geq nL_2/\sqrt{\varepsilon}$ , leading to a number of accesses to  $H$  that scales as  $4n^4L_1^2L_2/\varepsilon^{5/2}$ . We thus gain a factor  $\sqrt{\varepsilon}$  with the exact same algorithm, but different assumptions.

## 4.4 Algorithms for isotonic problem

Compared to plain submodular minimization where we need to project onto  $\mathcal{S}$ , we need to take into account the extra isotonic constraints, i.e.,  $\rho \in \mathcal{T}$ , and thus use more complex orthogonal projections.

**Orthogonal projections.** We now require the orthogonal projections on  $\mathcal{S} \cap \mathcal{T}$  or  $[0, 1]^{n \times k} \cap \mathcal{S} \cap \mathcal{T}$ , which are themselves isotonic regression problems with  $nk$  variables. If there are  $m$  original isotonic constraints in Eq. (4), the number of isotonic constraints for the projection step is  $O(nk + mk)$ , which is typically  $O(mk)$  if  $m \geq n$ , which we now assume. Thus, we can use existing parametric max-flow algorithms which can solve these in  $O(nmk^2 \log(nk))$  [16] or in  $O(nmk^2 \log(n^2k/m))$  [17]. Alternatively, we can explicitly consider a sequence of max-flow problems (with at most  $\log(1/\varepsilon)$  of these, where  $\varepsilon$  is the required precision) [18, 19]. Finally, we may consider (approximate) alternate

projection algorithms such as Dykstra’s algorithm and its accelerated variants [20], since the set  $\mathcal{S}$  is easy to project to, while, in some cases, such as chain isotonic constraints for the original problem,  $\mathcal{T}$  is easy to project to.

Finally, we could also use algorithms dedicated to special structures for isotonic regression (see [21]), in particular when our original set of isotonic constraints in Eq. (4) is a chain, and the orthogonal projection corresponds to a two-dimensional grid [4]. In our experiments, we use a standard max-flow code [22] and the usual divide-and-conquer algorithms [18, 19] for parametric max-flow.

**Separable problems.** The function  $f_{\downarrow}$  from Section 4.2 is then a linear function of the form  $f_{\downarrow}(\rho) = \text{tr } w^{\top} \rho$ , and the strongly-convex problem becomes the one of minimizing  $\min_{\rho \in \mathcal{S} \cap \mathcal{T}} \frac{1}{2} \|\rho + w\|_F^2$ , which is simply the problem of projecting on the intersection of two convex sets, for which an accelerated Dykstra algorithm may be used [20], with convergence rate in  $O(1/t^2)$  after  $t$  iterations. Each step is  $O(kn)$  for projecting onto  $\mathcal{S}$ , while this is  $k$  parametric network flows with  $n$  variables and  $m$  constraints for projecting onto  $\mathcal{T}$ , in  $O(knm \log n)$  for the general case and  $O(kn)$  for chains and rooted trees [3, 6].

In our experiments in Section 6, we show that Dykstra’s algorithm converges quickly for separable problems. Note that when the underlying losses are convex, then Dykstra converges in a *single* iteration. Indeed, in this situation, the sequences  $(-w_{ij})_j$  are non-increasing and isotonic regression along a direction preserves decreasingness in the other direction, which implies that after two alternate projections, the algorithm has converged to the optimal solution.

Alternatively, for the non-strongly convex formulation, this is a single network flow problem with  $n(k-1)$  nodes, and  $mk$  constraints, in thus  $O(nmk^2 \log(nk))$  [23]. When  $E$  corresponds to a chain, then this is a 2-dimensional-grid with an algorithm in  $O(n^2k^2)$  [4]. For a precision  $\varepsilon$ , and thus  $k$  proportional to  $n/\varepsilon$  with the assumptions of Section 4.2, this makes a number of function calls for  $H$ , equal to  $O(kn) = O(n^2/\varepsilon)$  and a running-time complexity of  $O(n^3m/\varepsilon^2 \cdot \log(n^2/\varepsilon))$ —for smooth functions, as shown in Section 4.3, we get  $k$  proportional to  $n/\sqrt{\varepsilon}$  and thus an improved behavior.

## 5 Improved discretization algorithms

We now consider a different discretization scheme that can take advantage of access to higher-order derivatives. We divide  $[0, 1]$  into  $k$  disjoint pieces  $A_0 = [0, \frac{1}{k})$ ,  $A_1 = [\frac{1}{k}, \frac{2}{k})$ ,  $\dots$ ,  $A_{k-1} = [\frac{k-1}{k}, 1]$ . This defines a new function  $\tilde{H} : \{0, \dots, k-1\}^n \rightarrow \mathbb{R}$  defined *only* for elements  $z \in \{0, \dots, k-1\}^n$  that satisfy the isotonic constraint, i.e.,  $z \in \{0, \dots, k-1\}^n \cap \mathcal{X}$ :

$$\tilde{H}(z) = \min_{x \in \prod_{i=1}^n A_{z_i}} H(x) \text{ such that } \forall (i, j) \in E, x_i \geq x_j. \quad (6)$$

The function  $\tilde{H}(z)$  is equal to  $+\infty$  if  $z$  does not satisfy the isotonic constraints.

**Proposition 2** *The function  $\tilde{H}$  is submodular, and minimizing  $\tilde{H}(z)$  for  $z \in \{0, \dots, k-1\}^n$  such that  $\forall (i, j) \in E, z_i \geq z_j$  is equivalent to minimizing Eq. (4).*

**Proof** We consider  $z$  and  $z'$  that satisfy the isotonic constraints, with minimizers  $x$  and  $x'$  in the definition in Eq. (6). We have  $H(z) + H(z') = H(x) + H(x') \geq H(\min\{x, x'\}) + H(\max\{x, x'\}) \geq H(\min\{z, z'\}) + H(\max\{z, z'\})$ . Thus it is submodular on the sub-lattice  $\{0, \dots, k-1\}^n \cap \mathcal{X}$ . ■

Note that in order to minimize  $\tilde{H}$ , we need to make sure that we only access  $H$  for elements  $z$  that satisfy the isotonic constraints, that is  $\rho \in \mathcal{S} \cap \mathcal{T}$  (which our algorithms impose).

## 5.1 Approximation from high-order smoothness

The main idea behind our discretization scheme is to use high-order smoothness to approximate for any required  $z$ , the function value  $\tilde{H}(z)$ . If we assume that  $H$  is  $q$ -times differentiable, with uniform bounds  $L_r^r$  on all  $r$ -th order derivatives, then, the  $(q-1)$ -th order Taylor expansion of  $H$  around  $y$  is equal to  $H_q(x|y) = H(y) + \sum_{r=1}^{q-1} \sum_{|\alpha|=r} \frac{1}{\alpha!} (x-y)^\alpha H^{(\alpha)}(y)$ , where  $\alpha \in \mathbb{N}^n$  and  $|\alpha|$  is the sum of elements,  $(x-y)^\alpha$  is the vector with components  $(x_i - y_i)^{\alpha_i}$ ,  $\alpha!$  the products of all factorials of elements of  $\alpha$ , and  $H^{(\alpha)}(y)$  is the partial derivative of  $H$  with order  $\alpha_i$  for each  $i$ .

We thus approximate  $\tilde{H}(z)$ , for any  $z$  that satisfies the isotonic constraint (i.e.,  $z \in \mathcal{X}$ ), by  $\hat{H}(z) = \min_{x \in (\prod_{i=1}^n A_{z_i}) \cap \mathcal{X}} H_q(x|\frac{z+1/2}{k})$ . We have for any  $z$ ,  $|\tilde{H}(z) - \hat{H}(z)| \leq (nL_q/2k)^q/q!$ . Moreover, when moving a single element of  $z$  by one, the maximal deviation is  $L_1/k + 2(nL_q/2k)^q/q!$ . The algorithm is then simply as follows: run the projected subgradient method on the extension of  $\tilde{H}$  (to a space of measures, like described in Section 2).

If  $\hat{H}$  is submodular, then the same reasoning as in Section 4.2 leads to an approximate error of  $(nk/\sqrt{t})(L_1/k + 2(nL_q/2k)^q/q!)$  after  $t$  iterations, on top of  $(nL_q/2k)^q/q!$ , thus, with  $t \geq 16n^2L_1^2/\varepsilon^2$  and  $k \geq (q!\varepsilon/2)^{-1/q}nL_q/2$  (assuming  $\varepsilon$  small enough such that  $t \geq 16n^2k^2$ ), this leads to a number of accesses to the  $(q-1)$ -th order oracle equal to  $O(n^4L_1^2L_q/\varepsilon^{2+1/q})$ . We thus get an improvement in the power of  $\varepsilon$ , which tend to  $\varepsilon^{-2}$  for infinitely smooth problems. Note that when  $q = 1$  we recover the same rate as in Section 4.3 (with the same assumptions but a slightly different algorithm).

However, unless  $q = 1$ , the function  $\hat{H}(z)$  is not submodular, and we cannot apply directly the bounds for convex optimization of the extension. We show in Appendix B that the bound still holds for  $q > 1$  by using the special structure of the convex problem.

What remains unknown is the computation of  $\hat{H}$  which requires to minimize polynomials on a small cube. We can always use the generic algorithms from Section 4.2 for this, which do not access extra function values but can be slow. For quadratic functions, we can use a convex relaxation which is not tight but already allows strong improvements with much faster local steps, and which we now present.

## 5.2 Quadratic problems

In this section, we consider the minimization of a quadratic submodular function  $H(x) = \frac{1}{2}x^\top Ax + c^\top x$  (thus with all off-diagonal elements of  $A$  non-negative) on  $[0, 1]^n$ , subject to isotonic constraints  $x_i \geq x_j$  for all  $(i, j) \in E$ . This can be solved iteratively (and approximately) with the algorithm from Section 4.2; in this section, we consider a semidefinite relaxation which is tight for certain problems ( $A$  positive semi-definite,  $c$  non-positive, or  $A$  with non-positive diagonal elements), but not in general (we have found counter-examples but it is most often tight).

The relaxation is based on considering the set of  $(Y, y) \in \mathbb{R}^{n \times n} \times \mathbb{R}^n$  such that there exists  $x \in [0, 1]^n \cap \mathcal{X}$  with  $Y = xx^\top$  and  $y = x$ . Our problem is thus equivalent to minimizing  $\frac{1}{2} \text{tr} AY + c^\top y$  such that  $(Y, y)$  is in the convex-hull  $\mathcal{Y}$  of this set, which is NP-hard to characterize in polynomial time [24]. However, we can find a simple relaxation by considering the following constraints: (a) for all  $i \neq j$ ,

$\begin{pmatrix} Y_{ii} & Y_{ij} & y_i \\ Y_{ij} & Y_{jj} & y_j \\ y_i & y_j & 1 \end{pmatrix}$  is positive semi-definite, (b) for all  $i \neq j$ ,  $Y_{ij} \leq \inf\{y_i, y_j\}$ , which corresponds to

$x_i x_j \leq \inf\{x_i, x_j\}$  for any  $x \in [0, 1]^n$ , (c) for all  $i$ ,  $Y_{ii} \leq y_i$ , which corresponds to  $x_i^2 \leq x_i$ , and (d) for all  $(i, j) \in E$ ,  $y_i \geq y_j$ ,  $Y_{ii} \geq Y_{jj}$ ,  $Y_{ij} \geq \max\{Y_{jj}, y_j - y_i + Y_{ii}\}$  and  $Y_{ij} \leq \max\{Y_{ii}, y_i - y_j + Y_{jj}\}$ , which corresponds to  $x_i \geq x_j$ ,  $x_i^2 \geq x_j^2$ ,  $x_i x_j \geq x_j^2$ ,  $x_i(1 - x_i) \leq x_i(1 - x_j)$ ,  $x_i x_j \leq x_i^2$ , and  $x_i(1 - x_j) \geq x_j(1 - x_j)$ . This leads to a semi-definite program which provides a lower-bound on the optimal value of the problem. See Appendix C for a proof of tightness for special cases and a counter-example for the tightness in general.



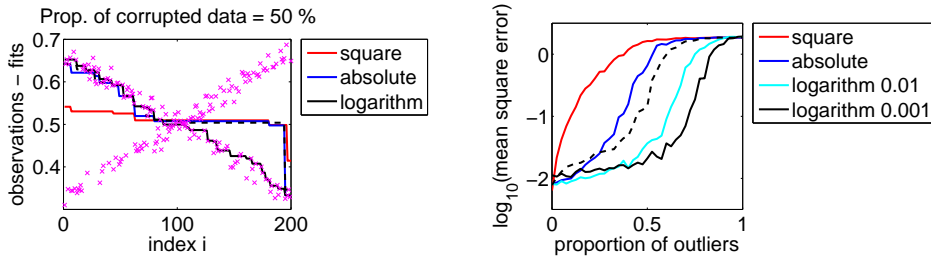


Figure 2: Left: robust isotonic regression with decreasing constraints, with 50% of corrupted data (observation in pink crosses, and results of isotonic regression with various losses in red, blue and black); the dashed black line corresponds to majorization-minimization algorithm started from the observations. Right: robustness of various losses to the proportion of corrupted data. The two logarithm-based losses are used with two values of  $\kappa$  (0.01 and 0.001); the dashed line corresponds to the majorization-minimization algorithm (with no convergence guarantees and worse performance).

## 6 Experiments

We consider experiments aiming at (a) showing that the new possibility of minimizing submodular functions with isotonic constraints brings new possibilities and (b) that the new discretization algorithms are faster than the naive one.

**Robust isotonic regression.** Given some  $z \in \mathbb{R}^n$ , we consider a separable function  $H(x) = \frac{1}{n} \sum_{i=1}^n G(x_i - z_i)$  with various possibilities for  $G$ : (a) the square loss  $G(t) = \frac{1}{2}t^2$ , (b) the absolute loss  $G(t) = |t|$  and (c) a logarithmic loss  $G(t) = \frac{\kappa^2}{2} \log(1 + t^2/\kappa^2)$ , which is the negative log-density of a Student distribution and non-convex. The robustness properties of such approaches have been well studied (see, e.g., [25, 26] and references therein). Our paper shows that these formulations are computationally tractable.

The first two losses may be dealt with methods for separable convex isotonic regression [5, 6], but the non-convex loss can only be dealt with exactly by the new optimization routine that we present—majorization-minimization algorithms [27] based on the concavity of  $G$  as a function of  $t^2$  can be used with such non-convex losses, but as shown below, they converge to bad local optima.

For simplicity, we consider chain constraints  $1 \geq x_1 \geq x_2 \geq \dots \geq x_n \geq 0$ . We consider two set-ups: (a) a separable set-up where maximum flow algorithms can be used directly (with  $n = 200$ ), and (b) a general submodular set-up (with  $n = 25$  and  $n = 200$ ), where we add a smoothness penalty which is the sum of terms of the form  $\frac{\lambda}{2} \sum_{i=1}^{n-1} (x_i - x_{i+1})^2$ , which is submodular (but not separable).

**Optimization of separable problems with maximum flow algorithms.** We solve the discretized version by a single maximum-flow problem of size  $nk$ . We compare the various losses for  $k = 1000$  on data which is along a decreasing line (plus noise), but corrupted (i.e., replaced for a certain proportion) by data along an increasing line. See an example in the left plot of Figure 2 for 50% of corrupted data. We see that the square loss is highly non-robust, while the (still convex) absolute loss is slightly more robust, and the robust non-convex loss still approximates the decreasing function correctly with 50% of corrupted data when optimized globally, while the method with no guarantee (based on majorization-minimization, dashed line) does not converge to an acceptable solution. In Appendix A, we show additional examples where it is robust up to 75% of corruption.

In the right plot of Figure 2, we also show the robustness to an increasing proportion of outliers (for the same type of data as for the left plot), by plotting the mean-squared error in log-scale and

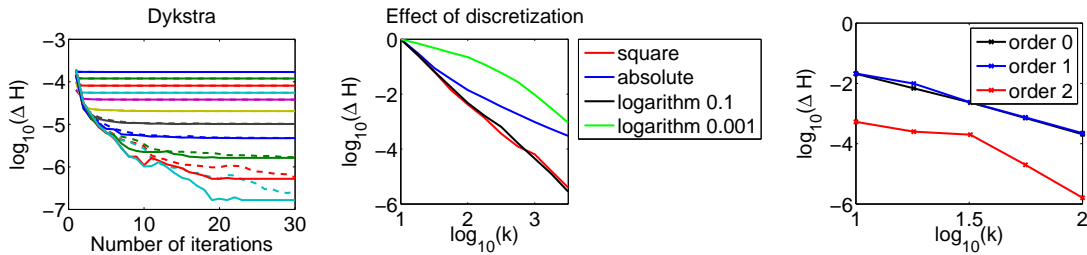


Figure 3: Dykstra’s projection algorithms for separable problems, with several values of  $k$ , spaced with  $1/4$  in base-10 logarithm, from  $10^{-1}$  to  $10^{-3.5}$ . Dykstra in dashed and accelerated Dykstra in plain. Middle: effect of discretization value  $k$  for various loss functions for separable problems (the logarithm-based loss is considered with two values of  $\kappa$ ,  $\kappa = 0.1$  and  $\kappa = 0.001$ ). Right: effect of discretization  $k$  on non-separable problems.

averaged over 20 replications. Overall, this shows the benefits of non-convex isotonic regression with guaranteed global optimization, even for large proportions of corrupted data.

**Optimization of separable problems with pool-adjacent violator (PAV) algorithm.** As shown in Section 4.2, discretized separable submodular optimization corresponds to the orthogonal projection of a matrix into the intersection of horizontal and vertical chain constraints. This can be done by Dykstra’s alternating projection algorithm or its accelerated version [20], for which each projection step can be performed with the PAV algorithm because each of them corresponds to chain constraints.

In the left plot of Figure 3, we show the difference in function values (in log-scale) for various discretization levels (defined by the integer  $k$  spaced by  $1/4$  in base-10 logarithm), as a function of the number of iterations (averaged over 20 replications). For large  $k$  (small difference of function values), we see a spacing between the ends of the plots of approximately  $1/2$ , highlighting the dependence in  $1/k^2$  of the final error with discretization  $k$ , which our analysis in Section 4.3 suggests.

**Effect of the discretization for separable problems.** In order to highlight the effect of discretization and its interplay with differentiability properties of the function to minimize, we consider in the middle plot of Figure 3, the distance in function values after full optimization of the discrete submodular function for various values of  $k$ . We see that for the simple smooth function (quadratic loss), we have a decay in  $1/k^2$ , while for the simple non smooth function (absolute loss), we have a final decay in  $1/k$ , as predicted by our analysis. For the logarithm-based loss, whose smoothness constant depends on  $\kappa$ , when  $\kappa$  is large, it behaves like a smooth function immediately, while for  $\kappa$  smaller,  $k$  needs to be large enough to reach that behavior.

**Non-separable problems.** We consider adding a smoothness penalty to add the prior knowledge that values should be decreasing *and* close. In Appendix A, we show the effect of adding a smoothness prior (for  $n = 200$ ): it leads to better estimation. In the right plot of Figure 3, we show the effect of various discretization schemes (for  $n = 25$ ), from order 0 (naive discretization), to order 1 and 2 (our new schemes based on Taylor expansions from Section 5.1), and we plot the difference in function values after 50 steps of subgradient descent. As outlined in our analysis, the first-order scheme does not help because our function has bounded Hessians, while the second-order does so significantly.

## 7 Conclusion

In this paper, we have shown how submodularity could be leveraged to obtain polynomial-time algorithms for isotonic regressions with a submodular cost, based on convex optimization in a space of measures. The final algorithms are based on discretization, which is a new scheme that also provides improvements based on smoothness (also without isotonic constraints). Our framework is worth extending in the following directions: (a) we currently consider a fixed discretization, it would be advantageous to consider adaptive schemes, potentially improving the dependence on the number of variables  $n$  and the precision  $\varepsilon$ ; (b) other shape constraints can be considered in a similar submodular framework, such as  $x_i x_j \geq 0$  for certain pairs  $(i, j)$ ; (c) a direct convex formulation without discretization could probably be found for quadratic programming with submodular costs (which are potentially non-convex but solvable in polynomial time); (d) a statistical study of isotonic regression with adversarial corruption could now rely on formulations with polynomial-time algorithms.

## References

- [1] S. M. Kakade, V. Kanade, O. Shamir, and A. Kalai. Efficient learning of generalized linear and single index models with isotonic regression. In *Advances in Neural Information Processing Systems (NIPS)*, 2011.
- [2] Y. Chen and R. J. Samworth. Generalized additive and index models with shape constraints. *Journal of the Royal Statistical Society Series B*, 78(4):729–754, 2016.
- [3] M. J. Best and N. Chakravarti. Active set algorithms for isotonic regression: a unifying framework. *Mathematical Programming*, 47(1):425–439, 1990.
- [4] J. Spouge, H. Wan, and W. J. Wilbur. Least squares isotonic regression in two dimensions. *Journal of Optimization Theory and Applications*, 117(3):585–605, 2003.
- [5] R. Luss and S. Rosset. Generalized isotonic regression. *Journal of Computational and Graphical Statistics*, 23(1):192–210, 2014.
- [6] Y.-L. Yu and E. P. Xing. Exact algorithms for isotonic regression and related. In *Journal of Physics: Conference Series*, volume 699. IOP Publishing, 2016.
- [7] D. P. Bertsekas. *Nonlinear programming*. Athena scientific Belmont, 2016. 3rd edition.
- [8] F. Bach. Submodular functions: from discrete to continuous domains. Technical Report 1511.00394, arXiv, 2015.
- [9] G. G. Lorentz. An inequality for rearrangements. *Am. Math. Monthly*, 60(3):176–179, 1953.
- [10] D. M. Topkis. Minimizing a submodular function on a lattice. *Operations research*, 26(2):305–321, 1978.
- [11] S. Karlin and Y. Rinott. Classes of orderings of measures and related correlation inequalities. i. multivariate totally positive distributions. *Journal of Multivariate Analysis*, 10(4):467–498, 1980.
- [12] W. Rudin. *Real and complex analysis*. McGraw-Hill, 1986.
- [13] H. Levy. Stochastic dominance and expected utility: survey and analysis. *Management science*, 38(4):555–593, 1992.
- [14] E. L. Lehmann. Ordered families of distributions. *The Annals of Mathematical Statistics*, 26(3):399–419, 1955.

- [15] D. Dentcheva and A. Ruszczyński. Semi-infinite probabilistic optimization: first-order stochastic dominance constraint. *Optimization*, 53(5-6):583–601, 2004.
- [16] D. S. Hochbaum. The pseudoflow algorithm: A new algorithm for the maximum-flow problem. *Operations Research*, 56(4):992–1009, 2008.
- [17] G. Gallo, M. D. Grigoriadis, and R. E. Tarjan. A fast parametric maximum flow algorithm and applications. *SIAM Journal on Computing*, 18(1):30–55, 1989.
- [18] R. Tarjan, J. Ward, B. Zhang, Y. Zhou, and J. Mao. Balancing applied to maximum network flow problems. In *European Symposium on Algorithms*, pages 612–623. Springer, 2006.
- [19] S. Jegelka, F. Bach, and S. Sra. Reflection methods for user-friendly submodular optimization. In *Advances in Neural Information Processing Systems (NIPS)*, 2013.
- [20] A. Chambolle and T. Pock. A remark on accelerated block coordinate descent for computing the proximity operators of a sum of convex functions. *SMAI-Journal of computational mathematics*, 1:29–54, 2015.
- [21] Q. F. Stout. Isotonic regression via partitioning. *Algorithmica*, 66(1):93–112, 2013.
- [22] Y. Boykov and V. Kolmogorov. An experimental comparison of min-cut/max-flow algorithms for energy minimization in vision. *IEEE Transactions on Pattern Analysis and Machine Intelligence*, 26(9):1124–1137, 2004.
- [23] D. D. Sleator and R. E. Tarjan. A data structure for dynamic trees. *Journal of computer and system sciences*, 26(3):362–391, 1983.
- [24] M. M. Deza and M. Laurent. *Geometry of cuts and metrics*, volume 15. Springer, 2009.
- [25] F. R. Hampel, E. M. Ronchetti, P. J. Rousseeuw, and W. A. Stahel. *Robust statistics: the approach based on influence functions*, volume 114. John Wiley & Sons, 2011.
- [26] P. J. Huber. Robust statistics. In *International Encyclopedia of Statistical Science*, pages 1248–1251. Springer, 2011.
- [27] D. R. Hunter and K. Lange. A tutorial on mm algorithms. *The American Statistician*, 58(1):30–37, 2004.
- [28] Y. Nesterov. *Introductory lectures on convex optimization: a basic course*. Kluwer, 2004.
- [29] S. Kim and M. Kojima. Exact solutions of some nonconvex quadratic optimization problems via SDP and SOCP relaxations. *Comp. Optimization and Applications*, 26(2):143–154, 2003.

## A Additional experimental results

We first present here additional results, for robustness of isotonic regression to corrupted data in Figure 4, where we show that up to 75% of corrupted data, the non-convex loss (solved exactly using submodularity) still finds a reasonable answer (but does not for 90% of corruption). Then, in Figure 5, we present the effect of adding a smoothness term on top of isotonic constraints: we indeed get a smoother function as expected, and the higher-order algorithms perform significantly better.

## B Approximate optimization for high-order discretization

In this section, we consider the set-up of Section 5, and we consider the minimization of the extension  $\tilde{h}_\downarrow$  on  $\mathcal{S} \cap \mathcal{T} \cap [0, 1]^{n \times (k-1)}$ . We consider the projected subgradient method, which uses an approximate subgradient not from  $\tilde{h}_\downarrow$  but from the approximation  $\hat{h}_\downarrow$ , which we know is obtained from a function  $\hat{H}$  such that  $|\hat{H}(z) - \tilde{H}(z)| \leq \eta$  for all  $z$ , and for  $\eta = (nL_q/2k)^q/q!$ .

The main issue is that the extension  $\hat{h}_\downarrow$  is not convex when  $\hat{H}$  is not submodular (which could be the case because it is only an approximation of a submodular function). In order to show that the same projected subgradient method converges to an  $\eta$ -minimizer of  $\tilde{h}_\downarrow$  (and hence of  $\tilde{H}$ ), we simply consider a minimizer  $\rho^*$  of  $\tilde{h}_\downarrow$  (which is convex) on  $\mathcal{S} \cap \mathcal{T} \cap [0, 1]^{n \times (k-1)}$ . Because of properties of submodular optimization problems, we may choose  $\rho^*$  so that it takes values only in  $\{0, 1\}^{n \times (k-1)}$ .

At iteration  $t$ , given  $\rho^{t-1} \in \mathcal{S} \cap \mathcal{T} \cap [0, 1]^{n \times (k-1)}$ , we compute an approximate subgradient  $\hat{w}^{t-1}$  using the greedy algorithm of [8] applied to  $\hat{w}^{t-1}$ . This leads to a sequence of indices  $(i(s), j(s)) \in \{1, \dots, n\} \times \{0, \dots, k-1\}$  and elements  $z^s \in \{0, \dots, k-1\}^n$  so that

$$\hat{h}_\downarrow(\rho^{t-1}) - \hat{H}(0) = \langle \hat{w}^{t-1}, \rho^{t-1} \rangle = \sum_{s=1}^{n(k-1)} \rho_{i(s)j(s)} [\hat{H}(z^s) - \hat{H}(z^{s-1})],$$

where all  $\rho_{i(s)j(s)}$  are arranged in non-increasing order. Because  $\hat{h}_\downarrow$  and  $\tilde{h}_\downarrow$  are defined as expectations of evaluations of  $\hat{H}$  and  $\tilde{H}$ , they differ from at most  $\eta$ . We denote by  $\tilde{w}^{t-1}$  the subgradient obtained from  $\tilde{H}$ .

We consider the iteration  $\rho^t = \Pi_{\mathcal{S} \cap \mathcal{T} \cap [0, 1]^{n \times (k-1)}}(\rho^{t-1} - \gamma \hat{w}^{t-1})$ , where  $\Pi_{\mathcal{S} \cap \mathcal{T} \cap [0, 1]^{n \times (k-1)}}$  is the orthogonal projection on  $\mathcal{S} \cap \mathcal{T} \cap [0, 1]^{n \times (k-1)}$ . From the usual subgradient convergence proof (see, e.g., [28]), we have:

$$\begin{aligned} \|\rho^t - \rho^*\|_F^2 &\leq \|\rho^{t-1} - \rho^*\|_F^2 - 2\gamma \langle \rho^{t-1} - \rho^*, \hat{w}^{t-1} \rangle + \gamma^2 \|\hat{w}^{t-1}\|_F^2 \\ &\leq \|\rho^{t-1} - \rho^*\|_F^2 - 2\gamma \langle \rho^{t-1} - \rho^*, \tilde{w}^{t-1} \rangle + \gamma^2 B^2 \\ &= \|\rho^{t-1} - \rho^*\|_F^2 - 2\gamma [\hat{h}_\downarrow(\rho^{t-1}) - \hat{H}(0)] + 2\gamma \langle \rho^*, \hat{w}^{t-1} \rangle + \gamma^2 B^2, \end{aligned}$$

using the bound  $\|\hat{w}^{t-1}\|_F^2 \leq B^2 \leq nk[L_1/k + 2(nL_q/k)^q/q!]$ . Moreover, we have

$$\langle \rho^*, \hat{w}^{t-1} \rangle = \langle \rho^*, \hat{w}^{t-1} - \tilde{w}^{t-1} \rangle + \tilde{h}_\downarrow(\rho^*) - \tilde{H}(0).$$

Since  $\rho^* \in \{0, 1\}^n$ , there is a single element  $s$  so that  $\rho_{i(s)j(s)} - \rho_{i(s+1)j(s+1)}$  is different from zero, and thus  $\langle \rho^*, \hat{w}^{t-1} - \tilde{w}^{t-1} \rangle$  is the difference between two function values of  $\tilde{H}$  and  $\hat{H}$ . Thus overall, we get:

$$\|\rho^t - \rho^*\|_F^2 \leq \|\rho^{t-1} - \rho^*\|_F^2 - 2\gamma [\tilde{h}_\downarrow(\rho^{s-1}) - \tilde{h}_\downarrow(\rho^*) - 2\eta] + \gamma^2 B^2,$$

which leads to the usual bound for the projected subgradient method, with an extra  $2\eta$  factor, as if (up to the factor of 2)  $\tilde{H}$  was submodular.

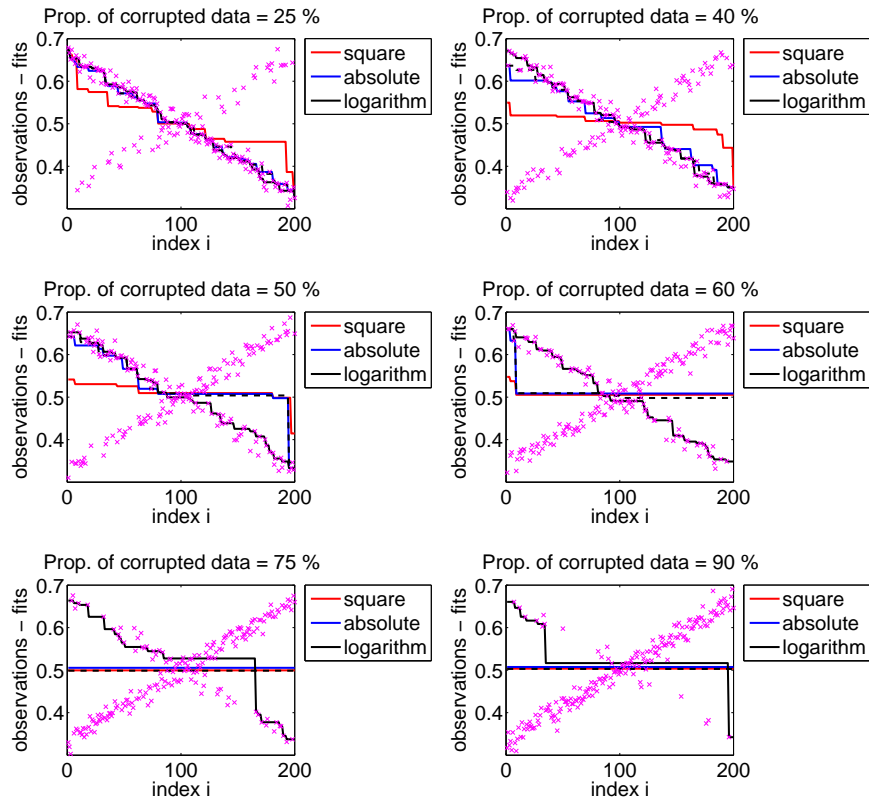


Figure 4: Robust isotonic regression with decreasing constraints (observation in pink crosses, and results of isotonic regression with various losses in red, blue and black), from 25% to 90% of corrupted data. The dashed black line corresponds to majorization-minimization algorithm started from the observations.

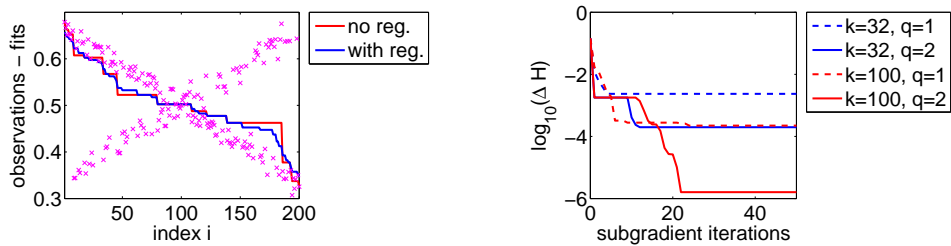


Figure 5: Left: Effect of adding additional regularization ( $n = 200$ ). Right: Non-separable problems ( $n = 25$ ), distance to optimality in function values (and log-scale) for two discretization values ( $k = 32$  and  $k = 100$ ) and two orders of approximation ( $q = 1$  and  $q = 2$ ).

## C Quadratic submodular functions

In this section, we consider the case where the function  $H$  is a second-order polynomial, as described in Section 5.2 of the main paper.

### C.1 Without isotonic constraints

We first consider the program without isotonic constraints, which is the convex program outlined in Section 5.2. Let  $(Y, y)$  be a solution of the following minimization problem, where  $\text{diag}(A) = 0$  and  $A \preceq 0$ :

$$\begin{aligned} \min_{Y, y} \frac{1}{2} \text{tr}(A + \text{Diag}(b))Y + c^\top y \quad \text{such that} \quad & \forall i, Y_{ii} \leq y_i \\ & \forall i \neq j, Y_{ij} \leq y_i, Y_{ij} \leq y_j, \\ & \forall i \neq j, \begin{pmatrix} Y_{ii} & Y_{ij} & y_i \\ Y_{ij} & Y_{jj} & y_j \\ y_i & y_j & 1 \end{pmatrix} \succeq 0. \end{aligned}$$

Some subcases are worth considering, showing that it is tight in these situations, that is, (a) the optimal values are the same as minimizing  $H(x)$  and (b) one can recover an optimal  $x \in [0, 1]^n$  from a solution of the problem above:

- **“Totally” submodular:** if  $c \leq 0$ , then, following [29], if we take  $\mathcal{Y}_{\text{SDP}} = \{(Y, y), \forall i \neq j, Y_{ij}^2 \leq Y_{ii}Y_{jj}, \forall i, y_i^2 \leq Y_{ii} \leq 1, y_i \geq 0\}$ , then by considering any minimizer  $(Y, y) \in \mathcal{Y}_{\text{SDP}}$  and taking  $x = \text{diag}(Y)^{1/2} \in [0, 1]^n$  (point-wise square root), we have  $H(x) = \frac{1}{2}b^\top \text{diag}(Y) + \frac{1}{2} \sum_{i \neq j} A_{ij} Y_{ii}^{1/2} Y_{jj}^{1/2} + \sum_i c_i Y_{ii}^{1/2}$ , and since  $A_{ij} \leq 0$  and  $c_i \leq 0$ , it is less than  $\text{tr} Y(A + \text{Diag}(b)) + c^\top y \leq \inf_{x \in [0, 1]^n} H(x)$ , and thus  $x$  is a minimizer.
- **Combinatorial:** if  $b \leq 0$ , then we have:  $H(x) = \sum_{i \neq j} A_{ij} x_i x_j + \frac{1}{2} \sum_{i=1}^n (-b_i) x_i (1 - x_i) + (c + b/2)^\top x$ . Since  $x_i x_j \leq \inf\{x_i, x_j\}$ ,  $A_{ij} \leq 0$ ,  $x_i(1 - x_i) \geq 0$  and  $b_i \leq 0$ , we have

$$\inf_{x \in [0, 1]^n} H(x) \geq \inf_{x \in [0, 1]^n} \sum_{i \neq j} A_{ij} \inf\{x_i, x_j\} + (c + b/2)^\top x.$$

Since the problem above is the Lovász extension of a submodular function the infimum may be restricted to  $\{0, 1\}^n$ . Since for such  $x$ ,  $x_i x_j = \inf\{x_i, x_j\}$  and  $x_i(1 - x_i) = 0$ , this is the infimum of  $H(x)$  on  $\{0, 1\}^n$ , which is itself greater than (or equal) to the infimum on  $[0, 1]^n$ . Thus, all infima are equal. Therefore, the usual linear programming relaxation, with  $\mathcal{Y}_{\text{LP}} = \{(Y, y), \forall i \neq j, Y_{ij} \leq \inf\{y_i, y_j\}, \forall i, Y_{ii} \leq y_i, 0 \leq y_i \leq 1\}$  is tight. We can get a candidate  $x \in \{0, 1\}^n$  by simple rounding.

- **Convex:** if  $A + \text{Diag}(b) \succeq 0$ , we can use the relaxation  $\{(Y, y), Y \succeq yy^\top, y \in [0, 1]^n\}$  (which trivially leads to a solution with  $x = y$ ). But we can also consider the relaxation  $\mathcal{Y}_{\text{cvx}} =$

$\{(Y, y), \forall i \neq j, \left( \begin{array}{cc} Y_{ii} - y_i^2 & Y_{ij} - y_i y_j \\ Y_{ij} - y_i y_j & Y_{jj} - y_j^2 \end{array} \right), \forall i, Y_{ii} \leq y_i\}$ . We have then

$$\begin{aligned} \frac{1}{2} \text{tr}(A + \text{Diag}(b))Y + y^\top c &= \frac{1}{2} \sum_{i \neq j} A_{ij} (Y_{ij} - y_i y_j) \\ &\quad + \frac{1}{2} \sum_i b_i (Y_{ii} - y_i^2) + y^\top c + \frac{1}{2} y^\top (A + \text{Diag}(b))y \\ &= \frac{1}{2} \sum_{i \neq j} A_{ij} \sqrt{Y_{ii} - y_i^2} \sqrt{Y_{jj} - y_j^2} \\ &\quad + \frac{1}{2} \sum_i b_i (Y_{ii} - y_i^2) + y^\top c + \frac{1}{2} y^\top (A + \text{Diag}(b))y, \end{aligned}$$

once we minimize with respect to  $Y_{ij}$ , from which we have, since  $A_{ij} \leq 0$ ,  $Y_{ij} = y_i y_j + \sqrt{Y_{ii} - y_i^2} \sqrt{Y_{jj} - y_j^2}$ . If we denote  $\sigma_i = \sqrt{Y_{ii} - y_i^2}$ , we get an objective function equal to  $\frac{1}{2} \sigma^\top (A + \text{Diag}(b)) \sigma + \frac{1}{2} y^\top (A + \text{Diag}(b)) y + c^\top y$ , which is minimized when  $\sigma = 0$  and thus  $y$  is a minimizer of the original problem.

## C.2 Counter-example

By searching randomly among problems with  $n = 3$ , and obtaining solutions by looking at all  $3^n = 3^3 = 27$  patterns for the  $n$  variables being 0, 1 and in  $(0, 1)$ , for the following function:

$$H(x_1, x_2, x_3) = \frac{1}{200} \begin{pmatrix} x_1 \\ x_2 \\ x_3 \end{pmatrix}^\top \begin{pmatrix} -193 & -100 & -100 \\ -100 & 317 & -100 \\ -100 & -100 & -45 \end{pmatrix} \begin{pmatrix} x_1 \\ x_2 \\ x_3 \end{pmatrix} + \frac{1}{100} \begin{pmatrix} x_1 \\ x_2 \\ x_3 \end{pmatrix}^\top \begin{pmatrix} -146 \\ 136 \\ -216 \end{pmatrix},$$

the global optimum is  $\begin{pmatrix} x_1 \\ x_2 \\ x_3 \end{pmatrix} \approx \begin{pmatrix} 1 \\ 0.7445 \\ 0 \end{pmatrix}$ , the minimal value of  $H$  is approximately  $-0.3835$ ,

while the optimal value of the semidefinite program is  $-0.3862$ . This thus provides a counter-example.

## C.3 With isotonic constraints

We consider the extra constraints: for all  $(i, j) \in E$ ,  $y_i \geq y_j$ ,  $Y_{ii} \geq Y_{jj}$ ,  $Y_{ij} \geq \max\{Y_{jj}, y_j - y_i + Y_{ii}\}$  and  $Y_{ij} \leq \max\{Y_{ii}, y_i - y_j + Y_{jj}\}$ , which corresponds to  $x_i \geq x_j$ ,  $x_i^2 \geq x_j^2$ ,  $x_i x_j \geq x_j^2$ ,  $x_i(1 - x_i) \leq x_i(1 - x_j)$ ,  $x_i x_j \leq x_i^2$ , and  $x_i(1 - x_j) \geq x_j(1 - x_j)$ .

In the three cases presented above, the presence of isotonic constraints leads to the following modifications:

- “Totally” submodular: because of the extra constraints  $Y_{ii} \geq Y_{jj}$ , for all  $(i, j) \in E$ , the potential solution  $x = \text{diag}(Y)^{1/2}$  satisfies the isotonic constraint and hence we get a global optimum.
- Combinatorial: nothing is changed, the solution is constrained to be in  $\{0, 1\}^n$  with the extra isotonic constraint, implied by  $y_i \leq y_j$ , for all  $(i, j) \in E$ .
- Convex: the original problem is still a convex problem where the constraints  $y_i \leq y_j$ , for all  $(i, j) \in E$ , are sufficient to impose the isotonic constraints.