

## Washington University School of Medicine Digital Commons@Becker

---

### Open Access Publications

---

2017

# Prevalence and predictors of postdischarge antibiotic use following mastectomy

Margaret A. Olsen

*Washington University School of Medicine in St. Louis*

Katelin B. Nickel

*Washington University School of Medicine in St. Louis*

Victoria J. Fraser

*Washington University School of Medicine in St. Louis*

Anna E. Wallace

*HealthCore, Inc.*

David K. Warren

*Washington University School of Medicine in St. Louis*

Follow this and additional works at: [https://digitalcommons.wustl.edu/open\\_access\\_pubs](https://digitalcommons.wustl.edu/open_access_pubs)

---

### Recommended Citation

Olsen, Margaret A.; Nickel, Katelin B.; Fraser, Victoria J.; Wallace, Anna E.; and Warren, David K., "Prevalence and predictors of postdischarge antibiotic use following mastectomy." *Infection Control & Hospital Epidemiology*,. 1-7. (2017).  
[https://digitalcommons.wustl.edu/open\\_access\\_pubs/6017](https://digitalcommons.wustl.edu/open_access_pubs/6017)

This Open Access Publication is brought to you for free and open access by Digital Commons@Becker. It has been accepted for inclusion in Open Access Publications by an authorized administrator of Digital Commons@Becker. For more information, please contact [engesz@wustl.edu](mailto:engesz@wustl.edu).

# Prevalence and Predictors of Postdischarge Antibiotic Use Following Mastectomy

Margaret A. Olsen, PhD, MPH;<sup>1,2</sup> Katelin B. Nickel, MPH;<sup>1</sup> Victoria J. Fraser, MD;<sup>1</sup> Anna E. Wallace, MPH;<sup>3</sup> David K. Warren, MD, MPH<sup>1</sup>

**OBJECTIVE.** Survey results suggest that prolonged administration of prophylactic antibiotics is common after mastectomy with reconstruction. We determined utilization, predictors, and outcomes of postdischarge prophylactic antibiotics after mastectomy with or without immediate breast reconstruction.

**DESIGN.** Retrospective cohort.

**PATIENTS.** Commercially insured women aged 18–64 years coded for mastectomy from January 2004 to December 2011 were included in the study. Women with a preexisting wound complication or septicemia were excluded.

**METHODS.** Predictors of prophylactic antibiotics within 5 days after discharge were identified in women with 1 year of prior insurance enrollment; relative risks (RR) were calculated using generalized estimating equations.

**RESULTS.** Overall, 12,501 mastectomy procedures were identified; immediate reconstruction was performed in 7,912 of these procedures (63.3%). Postdischarge prophylactic antibiotics were used in 4,439 procedures (56.1%) with immediate reconstruction and 1,053 procedures (22.9%) without immediate reconstruction ( $P < .001$ ). The antibiotics most commonly prescribed were cephalosporins (75.1%) and fluoroquinolones (11.1%). Independent predictors of postdischarge antibiotics were implant reconstruction (RR, 2.41; 95% confidence interval [CI], 2.23–2.60), autologous reconstruction (RR, 2.17; 95% CI, 1.93–2.45), autologous reconstruction plus implant (RR, 2.11; 95% CI, 1.92–2.31), hypertension (RR, 1.05; 95% CI, 1.00–1.10), tobacco use (RR, 1.07; 95% CI, 1.01–1.14), surgery at an academic hospital (RR, 1.14; 95% CI, 1.07–1.21), and receipt of home health care (RR, 1.11; 95% CI, 1.04–1.18). Postdischarge prophylactic antibiotics were not associated with SSI after mastectomy with or without immediate reconstruction (both  $P > .05$ ).

**CONCLUSIONS.** Prophylactic postdischarge antibiotics are commonly prescribed after mastectomy; immediate reconstruction is the strongest predictor. Stewardship efforts in this population to limit continuation of prophylactic antibiotics after discharge are needed to limit antimicrobial resistance.

*Infect Control Hosp Epidemiol* 2017;1–7

Surgical-site infections (SSIs) are the most common healthcare-associated infections in the United States; an estimated 157,500 SSIs occur annually.<sup>1</sup> The Centers for Disease Control and Prevention (CDC) guidelines for the prevention of SSI recommend the use of preoperative antibiotic prophylaxis for procedures for which data support the benefit of prophylactic antibiotics, for those that involve implantation of a medical device, or in surgeries in which an SSI is potentially catastrophic.<sup>2</sup> The most recent CDC guidelines recommend against administration of prophylactic antibiotics in clean surgeries after the surgical incision is closed, even in the presence of surgical drains,<sup>3</sup> due to lack of data

showing benefit with this practice. Other national and international organizations recommend stopping prophylactic antibiotics within 24 hours of noncardiothoracic surgery.<sup>2,4,5</sup> In practice, compliance with limiting the duration of prophylactic antibiotic after surgery varied by 58%–100% in a study of National Surgical Quality Improvement Program hospitals.<sup>6,7</sup> A major concern with the use of postdischarge antibiotic prophylaxis is exposing patients to unnecessary antibiotics. The use of unnecessary antibiotics may result in additional costs and adverse events in addition to selection of antibiotic-resistant bacteria<sup>8</sup> and *Clostridium difficile* infection.<sup>9</sup>

Affiliations: 1. Division of Infectious Diseases, Department of Medicine, Washington University School of Medicine, St Louis, Missouri; 2. Division of Public Health Sciences, Department of Surgery, Washington University School of Medicine, St Louis, Missouri; 3. HealthCore, Inc, Wilmington, Delaware.

PREVIOUS PRESENTATION. This work was presented at the International Conference on Pharmacoepidemiology and Therapeutic Risk Management in Dublin, Ireland, on August 26, 2016.

Received February 7, 2017; accepted May 29, 2017

© 2017 by The Society for Healthcare Epidemiology of America. All rights reserved. DOI: 10.1017/ice.2017.128

Postdischarge antibiotic prophylaxis use is common in mastectomy<sup>10–13</sup> and breast augmentation,<sup>14,15</sup> after which surgeons often continue antibiotics until removal of all surgical drains. The American Society of Plastic Surgeons practice guidelines for expander/implant breast reconstruction recommend that antibiotics be discontinued <24 hours after surgery unless drains are present, in which case prophylaxis duration is left to surgeon preference.<sup>16</sup> In a survey of 460 plastic surgeons, 72% prescribed outpatient antibiotics after mastectomy with breast reconstruction.<sup>17</sup> Another survey of 253 plastic surgeons who performed primarily cosmetic breast augmentation reported that 84% prescribed postoperative antibiotics, with 73% continuing them for >3 days.<sup>18</sup>

We utilized a large commercial health insurer database to analyze use and outcomes of postdischarge prophylactic antibiotics in a cohort of women undergoing mastectomy with and without immediate reconstruction. We aimed to determine the prevalence of postdischarge prophylactic antibiotics in uncomplicated procedures, to identify patient and operative factors associated with this utilization, and in a secondary analysis, to determine whether postdischarge antibiotic use was associated with decreases in SSI and noninfectious wound complications (NIWCs). The use of large generalizable health insurer claims data allowed for better understanding of practice regarding continuation of prophylactic antibiotics after hospital discharge among a wide variety of surgeons and potential stewardship opportunities to limit this practice in breast surgery. Unlike previous studies, the large database also provided the statistical power to determine the association of postdischarge antibiotics and the incident SSIs and NIWCs.

## METHODS

### Primary Data Source

We conducted a retrospective cohort study using all fully adjudicated, paid claims submitted for reimbursement from providers, facilities, and outpatient pharmacies linked to health plan enrollment information from 12 Anthem-affiliated plans in the HealthCore Integrated Research Database (Online Supplemental Appendix).<sup>19</sup> Fully insured women with enrollment in a fee-for-service plan with medical coverage of hospital and physician services and prescription drug coverage were eligible for inclusion in the cohort. Women with end-stage renal disease, prior organ transplant, or HIV infection were excluded due to the rare nature of the conditions and for privacy concerns.

### Mastectomy Population

We identified inpatient mastectomy operations among insured members aged 18–64 years from January 1, 2004, to December 31, 2011, using the *International Classification of Diseases, 9<sup>th</sup> Revision, Clinical Modification* (ICD-9-CM) and *Current Procedural Terminology, 4<sup>th</sup> edition* (CPT-4) procedure codes from facilities and providers, as described previously.<sup>19</sup>

Classification of the mastectomy and reconstruction has been described in detail.<sup>19,20</sup> To limit the identification of antibiotics to those prescribed for prophylaxis (rather than therapeutic indications), we excluded operations for which SSI,<sup>19</sup> cellulitis,<sup>19</sup> NIWCs,<sup>21</sup> port infection (ICD-9-CM diagnosis 996.62), or septicemia (ICD-9-CM diagnosis 038.0–038.9, 790.7) were coded from 30 days before mastectomy through 5 days after discharge from the mastectomy hospitalization.

### Postdischarge Prophylactic Antibiotics

We defined postdischarge prophylactic antibiotics as any of the following antibiotics from paid claims in the outpatient pharmacy file from 0 to 5 days after mastectomy discharge: cephalosporins, fluoroquinolones, lincosamides, macrolides, penicillins, rifampin, sulfamethoxazole-trimethoprim, and tetracyclines.

### Predictors of Prophylactic Antibiotic Use

To identify predictors of postdischarge prophylactic antibiotic use in univariate and multivariable analyses, we limited the population to (1) women with insurance coverage 365 days before surgery through 30 days after surgery, (2) the first mastectomy per patient, and (3) records without missing information on patient region of residence (Appendix figure).

Potential predictors of prophylactic antibiotic use included demographics, comorbidities (primarily using the Elixhauser classification),<sup>22</sup> medications, cancer, operative factors, and facility factors with clinical or biologic plausibility for association with antibiotic use and/or risk for SSI, as described previously.<sup>20,21</sup> We included postoperative home health care within 10 days after discharge unless the home health visits were first coded at the time of or after an SSI or NIWC because these visits were likely due to wound care.

### Complications After Mastectomy

SSIs and NIWCs first recorded from 6 days after mastectomy discharge through 90 days after mastectomy were identified using ICD-9-CM diagnosis codes from inpatient and outpatient facilities and provider claims, as reported previously.<sup>19,21</sup> NIWCs included fat necrosis (567.82, 611.3), dehiscence (875.0, 875.1, 879.0, 879.1, 998.3, 998.32), hematoma (998.12), and tissue necrosis (998.83). We censored the observation period to capture complications before a subsequent surgical procedure, as described previously.<sup>19</sup> We captured *C. difficile* infection (ICD-9-CM diagnosis code 008.45 or prescription for oral vancomycin) through 30 days after discharge from the mastectomy hospitalization. For persons with prophylactic antibiotic use, we only included *C. difficile* coded on or after the first postdischarge antibiotic date.

### Statistical Analyses

We determined potential predictors of prophylactic antibiotic use using  $\chi^2$  tests for binary variables and a generalized

estimating equations (GEE) model for multicategory variables. Any predictors with a cell size <5 were excluded from analysis. Among factors with  $P < .2$  in univariate analysis, we assessed multicollinearity by examining the tolerance values in each model to ensure independence of explanatory variables. A GEE model was used to estimate adjusted relative risks because the prevalence of prophylactic antibiotics was high. Backward selection was used with a cutoff of  $P < .05$ . For our secondary aim, we compared the incidence of SSI and NIWCs after mastectomy according to prophylactic antibiotic use with a logistic regression model, controlling for type of breast reconstruction. All data management and analyses were performed using SAS version 9.4 software (SAS Institute, Cary, NC). We performed post hoc power calculations using PASS 14 Power Analysis and Sample Size Software (NCSS, LLC, Kaysville, UT). This study was approved by the Washington University Human Research Protection Office.

## RESULTS

Starting with our previously described population of 18,696 mastectomy procedures,<sup>19</sup> 12,501 inpatient mastectomy procedures among 12,198 patients with medical and prescription drug coverage met eligibility criteria for this study (Appendix). Immediate reconstruction was performed in 7,912 (63.3%) procedures. Prophylactic antibiotics were prescribed post discharge after 5,492 (43.9%) procedures overall. Of 5,651 unique prescriptions within 5 days post discharge, cephalosporins were the most commonly prescribed antibiotic class (75.1%), followed by fluoroquinolones (11.1%), lincosamides (4.8%), and penicillins (3.5%). Utilization of postdischarge prophylactic antibiotics was more common after mastectomy with immediate reconstruction than after mastectomy only (4,439 [56.1%] vs 1,053 [22.9%];  $P < .001$ ).

Overall, 793 procedures were coded for SSI (6.3%) and 802 (6.4%) were coded for an NIWC within 90 days after surgery. A total of 13 (0.1%) procedures included evidence for *C. difficile* infection within 30 days after hospital discharge. In mastectomy-only operations, the SSI rates were similar regardless of postdischarge prophylactic antibiotic use, but the rate of NIWCs was higher in women given postdischarge prophylactic antibiotics than in women who did not receive postdischarge antibiotics (Figure 1). Postdischarge prophylactic antibiotic use was not associated with SSI or NIWCs following mastectomy with immediate reconstruction (Figure 1). After adjusting for type of procedure (ie, mastectomy only, implant reconstruction, autologous flap reconstruction), receipt of postdischarge prophylactic antibiotic was not associated with SSI (odds ratio [OR], 0.87; 95% confidence interval [CI], 0.75–1.01) nor NIWCs (OR, 1.14; 95% CI, 0.99–1.33) compared to no prescription for postdischarge antibiotics. Based on the number of reconstruction procedures and assuming a 25% reduction in SSI associated with postdischarge antibiotic use, we achieved 81% power to

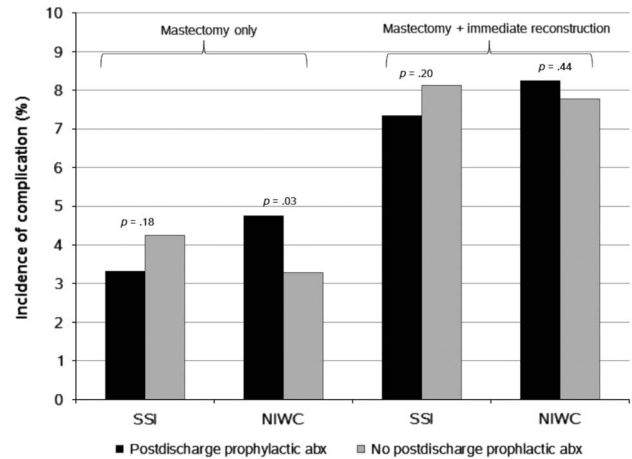


FIGURE 1. Incidence of surgical site infection and noninfectious wound complications by postdischarge prophylactic antibiotic use and presence of immediate breast reconstruction (N=12,501). NOTE. Abx, antibiotic; NIWC, noninfectious wound complication; SSI, surgical-site infection.

detect a difference in the complication rates in the reconstruction population but much lower power (18%) in the mastectomy-only population due to the lower percentage receiving postdischarge antibiotics and the lower baseline complication rates.

The population for our analysis of risk factors associated with postdischarge antibiotic utilization was reduced to 9,188 after excluding those with <1 year of prior health insurance coverage, those with second mastectomy procedures, and 23 procedures with missing US region (Appendix figure). In univariate analysis, women who received postdischarge prophylactic antibiotics were younger, in the higher-income quartiles, and more likely to have preexisting depression, tobacco use disorder, skin disease, breast carcinoma in situ or to be undergoing prophylactic mastectomy than women who did not receive postdischarge antibiotics (Table 1). Women who received postdischarge antibiotics were also more likely to have undergone sentinel node dissection, implant, autologous flap, and autologous flap plus implant reconstruction, and less likely to have had a modified radical mastectomy than women who did not receive antibiotics post discharge. Several facility factors were associated with increased likelihood to receive postdischarge prophylactic antibiotics, including larger bed size, medical school affiliation, residency program, and facility location in the US Northeast and Midwest regions (Table 1).

The independent predictors of prophylactic antibiotic use post discharge with the largest effect sizes were operative factors: immediate breast implant (relative risk [RR], 2.41) and autologous flap reconstruction with an implant (RR, 2.17) or without an implant (RR, 2.11). Patient factors (hypertension, tobacco use disorder, and postoperative home health) and facility characteristics (surgery at a facility in the Northeast or Midwest and surgery at an academic hospital) were

TABLE 1. Univariate Predictors of Postdischarge Prophylactic Antibiotics After 9,188 Mastectomy Procedures<sup>a</sup>

Variable	Postdischarge Prophylactic Antibiotic Use		P
	Yes, No. (%)	No, No. (%)	
Total	4,071	5,117	
<b>Patient factors</b>			
Age			
18–35 years	208 (5.1)	204 (4.0)	.59
36–40 years	356 (8.7)	357 (7.0)	.68
41–45 years	673 (16.5)	701 (13.7)	Ref
46–50 years	913 (22.4)	1,040 (20.3)	.20
51–55 years	797 (19.6)	982 (19.2)	.02
56–60 years	664 (16.3)	1,035 (20.2)	<.001
61–64 years	460 (11.3)	798 (15.6)	<.001
Income quartile <sup>b</sup>			
0–25 <sup>th</sup> percentile	797 (19.6)	1,254 (24.5)	<.001
26–50 <sup>th</sup> percentile	930 (22.8)	1,224 (23.9)	<.001
51–75 <sup>th</sup> percentile	1,036 (25.4)	1,206 (23.6)	.06
76–100 <sup>th</sup> percentile	1,176 (28.9)	1,227 (24.0)	Ref
Missing	132 (3.2)	206 (4.0)	.002
<b>Comorbidities/Medications</b>			
Anticoagulopathy drugs	60 (1.5)	107 (2.1)	.03
Depression	302 (7.4)	333 (6.5)	.09
Diabetes	229 (5.6)	373 (7.3)	.001
Hypertension	1,216 (29.9)	1,623 (31.7)	.06
Liver disease	13 (0.3)	28 (0.5)	.10
Malnutrition/weight loss	35 (0.9)	60 (1.2)	.14
Cancer (other than breast)	331 (8.1)	490 (9.6)	.02
Obesity	267 (6.6)	373 (7.3)	.17
Skin disease	102 (2.5)	103 (2.0)	.11
Tobacco use disorder	527 (12.9)	608 (11.9)	.12
Smoking-related diseases	107 (2.6)	178 (3.5)	.02
<b>Stage of breast cancer</b>			
Benign or prophylactic	160 (3.9)	146 (2.9)	.003
Carcinoma <i>in situ</i>	585 (14.4)	589 (11.5)	<.001
Local	2,465 (60.6)	3,100 (60.6)	Ref
Regional	772 (19.0)	1,144 (22.4)	.003
Metastatic	89 (2.2)	138 (2.7)	.15
<b>Operative factors</b>			
Type of procedure			
Unilateral mastectomy only	581 (14.3)	1,844 (36.0)	Ref
Bilateral mastectomy only	185 (4.5)	640 (12.5)	.37
Mastectomy plus implant	2,535 (62.3)	1,878 (36.7)	<.001
Mastectomy plus flap	570 (14.0)	562 (11.0)	<.001
Mastectomy plus flap and implant	200 (4.9)	193 (3.8)	<.001
Modified radical mastectomy	1,522 (37.4)	2,271 (44.4)	<.001
Sentinel node dissection	1,126 (27.7)	1,233 (24.1)	<.001
<b>Facility factors</b>			
No. of beds			
1–299	839 (20.6)	1,354 (26.5)	Ref
300–499	881 (21.6)	1,137 (22.2)	<.001
500 +	826 (20.3)	838 (16.4)	<.001
Missing <sup>c</sup>	1,525 (37.5)	1,788 (34.9)	<.001
Location of facility			
Urban	2,460 (60.4)	3,126 (61.1)	<.001
Rural	86 (2.1)	203 (4.0)	Ref
Missing <sup>c</sup>	1,525 (37.5)	1,788 (34.9)	<.001
Medical school affiliation			
Yes	1,638 (40.2)	1,777 (34.7)	<.001
No	908 (22.3)	1,552 (30.3)	Ref
Missing <sup>c</sup>	1,525 (37.5)	1,788 (34.9)	<.001
Residency program			
Yes	1,424 (35.0)	1,530 (29.9)	<.001
No	1,122 (27.6)	1,799 (35.2)	Ref
Missing <sup>c</sup>	1,525 (37.5)	1,788 (34.9)	<.001
Region of facility <sup>d</sup>			
Northeast	984 (24.2)	830 (16.2)	<.001
South	1,174 (28.8)	1,749 (34.2)	.58

TABLE 1. Continued

Variable	Postdischarge Prophylactic Antibiotic Use		
	Yes, No. (%)	No, No. (%)	P
Midwest	702 (17.2)	786 (15.4)	<.001
West	1,211 (29.7)	1,752 (34.2)	Ref
<b>Postoperative factors</b>			
Home health care <sup>e</sup>	577 (14.2)	601 (11.7)	.001

NOTE. Ref, reference group.

<sup>a</sup>The following factors had  $P \geq 0.2$  and were excluded from the table: alcohol abuse, blood loss anemia, coagulopathy, collagen vascular/rheumatologic disease, congestive heart failure, deficiency anemia, disease-modifying anti-rheumatic drugs, oral steroids, peripheral vascular disease, pneumonia or urinary tract infection within 30 days prior to surgery, psychoses, renal failure, prior *Staphylococcus aureus* infection, inflammatory breast disease, history of breast cancer, and history of radiotherapy.

<sup>b</sup>Based on median for zip code.

<sup>c</sup>Missing facility information due to no facility claim for procedure, no match to a facility in the American Hospital Association Annual Survey of Hospitals, or a match to multiple facilities.

<sup>d</sup>For those with missing facility information, we used patient home zip code when possible to determine the US region of the facility.

<sup>e</sup>Restricted to home health care before a surgical site infection or noninfectious wound complication.

associated with slightly increased risk of postdischarge prophylactic antibiotic use after controlling for the type of procedure (Table 2).

## DISCUSSION

We determined variation and predictors of postdischarge prophylactic antibiotic use in a large population of women undergoing mastectomy using geographically diverse claims data. Despite recommendations in many surgical guidelines to discontinue administration of prophylactic antibiotics either immediately after surgery or within 24 hours after a procedure, antibiotics are frequently overused postoperatively, particularly after breast operations. We found that utilization of postdischarge prophylactic antibiotics ranged from 23% for mastectomy without immediate reconstruction to 56% for mastectomy with immediate reconstruction. These results are in line with survey data suggesting that plastic surgeons are more likely to continue patients on prophylactic antibiotics post discharge than general breast surgeons.<sup>17,23</sup> Given their common utilization of antibiotics, surgeons are positioned to be key partners in the success of hospital antibiotic stewardship programs.<sup>24</sup>

Factors associated with prolonged perioperative prophylaxis are critical to development of interventions to assure appropriate antibiotic use. By far, the most important predictors of postdischarge prophylactic antibiotics after mastectomy were autologous flap and implant reconstruction, which were associated with a 2.1–2.4-fold increased risk of

TABLE 2. Multivariable Predictors of Postdischarge Prophylactic Antibiotics After Mastectomy Performed During an Inpatient Hospitalization

Variable	Relative Risk (95% Confidence Interval)
Hypertension	1.05 (1.00–1.10)
Tobacco use disorder	1.07 (1.01–1.14)
Type of procedure	
Unilateral mastectomy only	1.00
Bilateral mastectomy only	0.94 (0.81–1.09)
Mastectomy plus implant	2.41 (2.23–2.60)
Mastectomy plus flap	2.11 (1.92–2.31)
Mastectomy plus flap plus implant	2.17 (1.93–2.45)
Location of facility	
West	1.00
Northeast	1.25 (1.18–1.33)
South	1.04 (0.97–1.10)
Midwest	1.19 (1.11–1.28)
Medical school affiliation of facility	
Yes	1.14 (1.07–1.21)
No	1.00
Missing	1.05 (0.99–1.12)
Home health care	1.11 (1.04–1.18)

prolonged antibiotic use. Immediate reconstruction is preferred over delayed reconstruction by many plastic surgeons due to better cosmesis and perceived psychosocial benefits for the patient.<sup>25</sup> Surgery performed in a teaching facility and in facilities located in the US Northeast and Midwest regions were also associated with a slightly increased risk of postdischarge prophylactic antibiotic use. This regional variation in the use of prolonged antibiotics is important to investigate further because it may have broad implications for regional differences in antibiotic stewardship programs as well as rates of antibiotic resistance in the community. In contrast, patient characteristics were associated with only slightly increased risk of prolonged antibiotic utilization, suggesting that stewardship interventions to reduce postdischarge antibiotic utilization should target primarily plastic surgeons performing immediate reconstruction.

In addition, 3 prior observational breast surgery studies reported significantly lower SSI rates in patients given postdischarge prophylactic antibiotics compared to either the recommended practice of a single dose of antibiotic before incision<sup>26</sup> or prophylaxis limited to 24 hours after surgery.<sup>27,28</sup> The study by Edwards et al included procedures performed by only 2 surgeons, 1 of whom always prescribed postoperative antibiotics until drains were removed while the other surgeon never used postoperative antibiotics. Therefore, confounding bias may be present in this study due to unmeasured differences in operative technique or other practices between these 2 surgeons.<sup>27</sup> In the studies by Clayton et al<sup>26</sup> and Avashia et al,<sup>28</sup> retrospective comparisons of SSI rates during time periods with different prophylactic antibiotic practices were

performed. It is possible that other infection control and operative practices varied between time periods, resulting in residual confounding. In the study by Avashia et al,<sup>28</sup> a change in prophylactic antibiotic practice was prompted by a 31.6% infection rate in 19 women during the period when only perioperative antibiotics were used, raising the possibility that the decreased SSI rate after reverting back to prolonged antibiotic administration was due to regression to the mean. The 5 observational studies<sup>10,29–32</sup> and 1 randomized trial<sup>33</sup> in the literature that did not find significantly different SSI rates associated with postdischarge antibiotic use compared to 24 hours or less of antibiotic administration were small and thus underpowered to detect a significant difference if it existed.<sup>34</sup> The lack of high-quality data on the risk and benefits of postdischarge antibiotic prophylaxis likely perpetuates the continued use of inappropriate prolonged antibiotic prophylaxis beyond the recommended 24 hours of duration.

In contrast to the 3 aforementioned studies that reported lower SSI rates associated with postdischarge prophylactic antibiotic use, we found that the rates of SSI and NIWCs did not differ according to use of postdischarge prophylactic antibiotics after controlling for procedure type. Importantly, we had sufficient power (>80%) in the reconstruction population to detect a difference between postdischarge prophylactic antibiotic use and the incidence of complications.<sup>10,26–33</sup> Cephalosporins were the antibiotic class most commonly prescribed for postdischarge prophylaxis in our cohort, followed by fluoroquinolones. Both of these antibiotic classes are associated with selection for colonization by and infection with antibiotic-resistant bacteria.<sup>35</sup> Fluoroquinolones are also increasingly reported to be associated with serious adverse events.<sup>36–38</sup>

The coding algorithms we used based on ICD-9-CM and CPT-4 codes have relatively good sensitivity to identify SSI after breast procedures<sup>39</sup> and *C. difficile* infection.<sup>40</sup> Despite this, our estimates of SSI, NIWCs, and *C. difficile* infection rates are almost certainly underestimates of the true incidence because the claims algorithm is unlikely to detect most minor infections, especially during the global 90-day major-surgery reimbursement period. It is possible that not all postdischarge antibiotic use in the absence of diagnosis codes for infection or NIWCs represented continuation of antibiotic prophylaxis, although this is unlikely because our window to identify postdischarge prophylaxis was very short (within 5 days after discharge). Outpatient antibiotics were identified by paid pharmacy claims; thus, we could not detect antibiotics given as samples or in the absence of a prescription drug claim, and we could not confirm that antibiotics were taken as directed. Although facility characteristics were missing for approximately one-third of procedures, we think differential misclassification is unlikely, such that certain types of facilities would be disproportionately more or less likely to have a paid claim in the database or match to the AHA database. We were, however, able to impute the facility region by using patient zip code,

which was important because regional utilization of post-discharge antibiotics varied.

The strengths of our study include the large population of women undergoing mastectomy, resulting in sufficient power to detect differences in complication rates in the reconstruction population. Our population was enriched in women undergoing breast reconstruction because of the use of commercial claims data because younger women are more likely to undergo immediate reconstruction.<sup>41</sup> Additional strengths include the ability to detect regional differences in antibiotic use because of the broad geographic coverage in the insurer claims data, and analysis of variation in use of prophylactic antibiotics by operative, patient, and facility characteristics.

In conclusion, postdischarge prophylactic antibiotic use in the absence of infectious or noninfectious wound complications is common after mastectomy, and it is driven primarily by immediate reconstruction rather than patient-level characteristics. We found no benefit to continuation of prophylactic antibiotics post discharge, with similar SSI and NIWC complication rates in women who received postdischarge antibiotics versus women who did not receive continued prophylactic antibiotics. Stewardship efforts to limit the duration of prophylactic antibiotics after surgery and to discourage continuation of antibiotics after hospital discharge are essential to avoiding further increases in antimicrobial resistance.

#### ACKNOWLEDGMENTS

We thank Cherie Hill for database and computer management support. The findings and conclusions in this document are those of the authors, who are responsible for its content, and they do not necessarily represent the official view of the NIH, the CDC, or the AHRQ.

*Financial support:* Funding for this project was provided by the National Institutes of Health (NIH; grant no. 5R01CA149614 to M.A.O.). Additional support was provided by the Centers for Disease Control and Prevention (CDC) Epicenters Program (grant no. U54CK000162 to V.J.F.), a grant from the National Center for Advancing Translational Sciences (NCATS) of the NIH (grant no. UL1 TR000448), and a grant from the Agency for Healthcare Research and Quality (AHRQ; grant no R24 HS19455).

*Potential conflicts of interest:* M.A.O. reports consultant work with Merck, Pfizer, and Sanofi Pasteur and grant funding through Pfizer, and Sanofi Pasteur for work outside the submitted manuscript. A.E.W. is an employee of HealthCore, a wholly owned subsidiary of Anthem, Inc., a health insurance company; she has received Anthem stock options and has participated in an Anthem employee stock purchase plan. V.J.F. reports that her spouse is the Senior Vice President and Chief Medical Officer for Express Scripts; she has received grants from the Foundation for Barnes-Jewish Hospital, the CDC, and the Doris Duke Foundation. D.K.W. reports consultant work with Centene Corp., Worrell, Inc., Novaerus, and Carefusion; he is a subinvestigator for a Cepheid-sponsored study for work outside the submitted manuscript. No other authors report conflicts of interest relevant to this article.

Address correspondence to Margaret A. Olsen, PhD, MPH, Washington University School of Medicine, Division of Infectious Diseases, 4523 Clayton Ave, Campus Box 8051, St Louis, MO 63110 (molsen@wustl.edu).

#### SUPPLEMENTARY MATERIAL

To view supplementary material for this article, please visit <https://doi.org/10.1017/ice.2017.128>

#### REFERENCES

1. Magill SS, Edwards JR, Bamberg W, et al. Multistate point-prevalence survey of health care-associated infections. *N Engl J Med* 2014;370:1198–1208.
2. Mangram AJ, Horan TC, Pearson ML, Silver LC, Jarvis WR. Guideline for prevention of surgical site infection, 1999. Hospital Infection Control Practices Advisory Committee. *Infect Control Hosp Epidemiol* 1999;20:250–278.
3. Berríos-Torres SI, Umscheid CA, Bratzler DW, et al. Centers for Disease Control and Prevention guideline for the prevention of surgical site infection, 2017. *JAMA Surg* 2017. doi: 10.1001/jamasurg.2017.0904.
4. Bratzler DW, Dellinger EP, Olsen KM, et al. Clinical practice guidelines for antimicrobial prophylaxis in surgery. *Am J Health Syst Pharm* 2013;70:195–283.
5. Systematic review and evidence-based guidance on perioperative antibiotic prophylaxis. European Centre for Disease Prevention and Control website. <http://ecdc.europa.eu/en/publications/Publications/Perioperative%20antibiotic%20prophylaxis%20-%20June%202013.pdf>. Published 2013. Accessed June 16, 2016.
6. Ingraham AM, Cohen ME, Bilimoria KY, et al. Association of surgical care improvement project infection-related process measure compliance with risk-adjusted outcomes: implications for quality measurement. *J Am Coll Surg* 2010; 211:705–714.
7. Wang Z, Chen F, Ward M, Bhattacharyya T. Compliance with surgical care improvement project measures and hospital-associated infections following hip arthroplasty. *J Bone Joint Surg Am* 2012;94:1359–1366.
8. Harbarth S, Samore MH, Lichtenberg D, Carmeli Y. Prolonged antibiotic prophylaxis after cardiovascular surgery and its effect on surgical site infections and antimicrobial resistance. *Circulation* 2000;101:2916–2921.
9. Poeran J, Mazumdar M, Rasul R, et al. Antibiotic prophylaxis and risk of *Clostridium difficile* infection after coronary artery bypass graft surgery. *J Thorac Cardiovasc Surg* 2016;151:589–597.
10. Throckmorton AD, Boughey JC, Boostrom SY, et al. Postoperative prophylactic antibiotics and surgical site infection rates in breast surgery patients. *Ann Surg Oncol* 2009;16: 2464–2469.
11. Hedrick TL, Smith PW, Gazoni LM, Sawyer RG. The appropriate use of antibiotics in surgery: a review of surgical infections. *Curr Probl Surg* 2007;44:635–675.
12. Halvorson EG, Disa JJ, Mehrara BJ, Burkey BA, Pusic AL, Cordeiro PG. Outcome following removal of infected tissue expanders in breast reconstruction: a 10-year experience. *Ann Plast Surg* 2007;59:131–136.
13. Macadam SA, Clugston PA, Germann ET. Retrospective case review of capsular contracture after two-stage breast reconstruction: is colonization of the tissue expander pocket associated with subsequent implant capsular contracture? *Ann Plast Surg* 2004; 53:420–424.
14. Khan UD. Breast augmentation, antibiotic prophylaxis, and infection: comparative analysis of 1,628 primary augmentation mammoplasties assessing the role and efficacy of antibiotics prophylaxis duration. *Aesthetic Plast Surg* 2010;34:42–47.
15. Perrotti JA, Castor SA, Perez PC, Zins JE. Antibiotic use in aesthetic surgery: a national survey and literature review. *Plast Reconstr Surg* 2002;109:1685–1693.

16. Alderman A, Gutowski K, Ahuja A, Gray D. ASPS clinical practice guideline summary on breast reconstruction with expanders and implants. *Plast Reconstr Surg* 2014;134:648e–655e.
17. Phillips BT, Wang ED, Mirrer J, et al. Current practice among plastic surgeons of antibiotic prophylaxis and closed-suction drains in breast reconstruction: experience, evidence, and implications for postoperative care. *Ann Plast Surg* 2011;66:460–465.
18. Chopra K, Gowda AU, McNichols CH, Brown EN, Slezak S, Rasko Y. Antimicrobial prophylaxis practice patterns in breast augmentation: a national survey of current practice. *Ann Plast Surg* 2016.
19. Olsen MA, Nickel KB, Fox IK, et al. Incidence of surgical site infection following mastectomy with and without immediate reconstruction using private insurer claims data. *Infect Control Hosp Epidemiol* 2015;36:907–914.
20. Olsen MA, Nickel KB, Margenthaler JA, et al. Development of a risk prediction model to individualize risk factors for surgical site infection after mastectomy. *Ann Surg Oncol* 2016;23:2471–2479.
21. Nickel KB, Fox IK, Margenthaler JA, Wallace AE, Fraser VJ, Olsen MA. Effect of noninfectious wound complications after mastectomy on subsequent surgical procedures and early implant loss. *J Am Coll Surg* 2016;222:844–852.
22. Elixhauser A, Steiner C, Harris R, Coffey RM. Comorbidity measures for use with administrative data. *Med Care* 1998;36:8–27.
23. Brahmbhatt RD, Huebner M, Scow JS, et al. National practice patterns in preoperative and postoperative antibiotic prophylaxis in breast procedures requiring drains: survey of the american society of breast surgeons. *Ann Surg Oncol* 2012;19:3205–3211.
24. Sartelli M, Duane TM, Catena F, et al. Antimicrobial stewardship: a call to action for surgeons. *Surg Infect (Larchmt)* 2016;17:625–631.
25. Serletti JM, Fosnot J, Nelson JA, Disa JJ, Bucky LP. Breast reconstruction after breast cancer. *Plast Reconstr Surg* 2011;127:124e–135e.
26. Clayton JL, Bazakas A, Lee CN, Hultman CS, Halvorson EG. Once is not enough: withholding postoperative prophylactic antibiotics in prosthetic breast reconstruction is associated with an increased risk of infection. *Plast Reconstr Surg* 2012;130:495–502.
27. Edwards BL, Stukenborg GJ, Brenin DR, Schroen AT. Use of prophylactic postoperative antibiotics during surgical drain presence following mastectomy. *Ann Surg Oncol* 2014;21:3249–3255.
28. Avashia YJ, Mohan R, Berhane C, Oeltjen JC. Postoperative antibiotic prophylaxis for implant-based breast reconstruction with acellular dermal matrix. *Plast Reconstr Surg* 2013;131:453–461.
29. Liu DZ, Dubbins JA, Louie O, Said HK, Neligan PC, Mathes DW. Duration of antibiotics after microsurgical breast reconstruction does not change surgical infection rate. *Plast Reconstr Surg* 2012;129:362–367.
30. McCullough MC, Chu CK, Duggal CS, Losken A, Carlson GW. Antibiotic prophylaxis and resistance in surgical site infection after immediate tissue expander reconstruction of the breast. *Ann Plast Surg* 2016;77:501–505.
31. Townley WA, Baluch N, Bagher S, et al. A single pre-operative antibiotic dose is as effective as continued antibiotic prophylaxis in implant-based breast reconstruction: a matched cohort study. *J Plast Reconstr Aesthet Surg* 2015;68:673–678.
32. Drury KE, Lanier ST, Khavanin N, et al. Impact of postoperative antibiotic prophylaxis duration on surgical site infections in autologous breast reconstruction. *Ann Plast Surg* 2016;76:174–179.
33. Phillips BT, Fourman MS, Bishawi M, et al. Are prophylactic postoperative antibiotics necessary for immediate breast reconstruction? Results of a prospective randomized clinical trial. *J Am Coll Surg* 2016;222:1116–1124.
34. Olsen MA, Nickel KB, Fox IK. Surveillance and prevention of surgical site infections in breast oncologic surgery with immediate reconstruction. *Curr Treat Options Infect Dis* 2017.
35. Paterson DL. “Collateral damage” from cephalosporin or quinolone antibiotic therapy. *Clin Infect Dis* 2004;38(Suppl 4):S341–S345.
36. Wise BL, Peloquin C, Choi H, Lane NE, Zhang Y. Impact of age, sex, obesity, and steroid use on quinolone-associated tendon disorders. *Am J Med* 2012;125:1228.e1223–1228.e1228.
37. Lapi F, Wilchesky M, Kezouh A, Benisty JI, Ernst P, Suissa S. Fluoroquinolones and the risk of serious arrhythmia: a population-based study. *Clin Infect Dis* 2012;55:1457–1465.
38. Etmnan M, Brophy JM, Samii A. Oral fluoroquinolone use and risk of peripheral neuropathy: a pharmacoepidemiologic study. *Neurology* 2014;83:1261–1263.
39. Olsen MA, Fraser VJ. Use of diagnosis codes and/or wound culture results for surveillance of surgical site infection after mastectomy and breast reconstruction. *Infect Control Hosp Epidemiol* 2010;31:544–547.
40. Dubberke ER, Butler AM, Yokoe DS, et al. Multicenter study of surveillance for hospital-onset *Clostridium difficile* infection by the use of ICD-9-CM diagnosis codes. *Infect Control Hosp Epidemiol* 2010;31:262–268.
41. Jagsi R, Jiang J, Momoh AO, et al. Trends and variation in use of breast reconstruction in patients with breast cancer undergoing mastectomy in the United States. *J Clin Oncol* 2014;32:919–926.