

Portland State University

**PDXScholar**

---

Online Northwest

Online Northwest 2015

---

Feb 13th, 11:05 AM - 11:50 AM

# Digital Asset Management System Assessment: Use Cases for Digital Infrastructure Re-design

Steve Van Tuyl  
*Oregon State University*

Hui Zhang  
*Oregon State University*

Amanda L. Whitmire  
*Oregon State University*

Follow this and additional works at: <https://pdxscholar.library.pdx.edu/onlinenorthwest>

**Let us know how access to this document benefits you.**

---

Van Tuyl, Steve; Zhang, Hui; and Whitmire, Amanda L., "Digital Asset Management System Assessment: Use Cases for Digital Infrastructure Re-design" (2015). *Online Northwest*. 1.  
<https://pdxscholar.library.pdx.edu/onlinenorthwest/2015/Presentations/1>

This Presentation is brought to you for free and open access. It has been accepted for inclusion in Online Northwest by an authorized administrator of PDXScholar. Please contact us if we can make this document more accessible: [pdxscholar@pdx.edu](mailto:pdxscholar@pdx.edu).

Eventually everything connects - people, ideas, objects. The quality of the connections is the key to quality per se.

-Charles Eames

Steve Van Tuyl, Data & Digital Repository Librarian  
Amanda L. Whitmire, Data Management Specialist  
Hui Zhang, Digital Applications Librarian



[SA@OSU Home](#)



**Dr. William J. Ripple**  
Distinguished Professor, College of Forestry  
Director, Trophic Cascades Program

**ScholarsArchive@OSU**  
*Featured Author*

## About ScholarsArchive@OSU

ScholarsArchive@OSU is Oregon State University's digital service for gathering, indexing, making available and storing the scholarly work of the Oregon State University community. It also includes materials from outside the institution in support of the university's land, sun, sea and space grant missions and other research interests.

### Search ScholarsArchive@OSU

[Advanced Search](#)

### Browse

- All of ScholarsArchive@OSU
- [Communities & Collections](#)
- [Issue Date](#)
- [Authors](#)
- [Titles](#)
- [Subjects](#)

### My Account

- [Logout](#)
- [My Profile](#)
- [Submissions & Tasks](#)

### Actions

- [Create Community](#)

### Administrative

[Access Control](#)



- 53000 Items
- 24000 Theses & Dissertations
- 8000 Extension & Experiment Station Documents
- 4600 Faculty Research Publications
- 1300 Open Access Publications
- 50 Datasets

## Trace-element Analysis of Ancient Near Eastern Ceramics from the Mid-4th Millennium to 3rd Millennium BC

Minc, Leah D.



**File Name:** NE\_ReadMe.pdf  
**Size:** 403.0Kb  
**Format:** PDF  
**Description:** Readme - Near East Archive.pdf

[View/Open](#)



**File Name:** NE Project Summary.pdf  
**Size:** 281.4Kb  
**Format:** PDF  
**Description:** A preliminary report circulated to collaborators for analyses supported by NSF award 1005945: Support of Coordinated, Regional Trace-Element Studies at the OSU-RC

[View/Open](#)



**File Name:** NE Project Map.pdf  
**Size:** 738.1Kb  
**Format:** PDF  
**Description:** Project map (PDF)

[View/Open](#)



**File Name:** NE Project Summary Figures.pdf  
**Size:** 3.231Mb  
**Format:** PDF  
**Description:** Project summary figures (PDF)

[View/Open](#)



**File Name:** NE Element Library.xlsx  
**Size:** 11.53Kb  
**Format:** Microsoft Excel  
**Description:** Element Library (Excel)

[View/Open](#)



**File Name:** NE Check Standards.xls  
**Size:** 33.5Kb  
**Format:** Microsoft Excel  
**Description:** Check-Standards (Excel)



**File Name:** OSU-RC\_Mesopotamia.zip  
**Size:** 164.6Mb  
**Format:** application/zip  
**Description:** Mesopotamia Archive



**File Name:** OSU-RC\_Nineveh\_Archive.zip  
**Size:** 134.3Mb  
**Format:** application/zip  
**Description:** Nineveh Archive (available July 20, 2015)



**File Name:** OSU-RC\_JebelAruda\_Archive.zip  
**Size:** 285.3Mb  
**Format:** application/zip  
**Description:** Jebel Aruda Archive (available July 20, 2015)



**File Name:** OSU-RC\_GodinTepe\_Archive.zip  
**Size:** 605.1Mb  
**Format:** application/zip  
**Description:** Godin Tepe Archive (available July 20, 2015)

[View/Open](#)



**File Name:** OSU-RC\_TellHadidi\_Archive.zip.zip  
**Size:** 273.7Mb  
**Format:** application/zip  
**Description:** Tell Hadidi Archive (available July 20, 2015)

[View/Open](#)



**File Name:** OSU-RC\_TellHumeida\_Archive.zip  
**Size:** 19.09Mb  
**Format:** application/zip  
**Description:** Tell Humeida Archive (available July 20, 2015)

[View/Open](#)



**File Name:** OSU-RC\_TellBrak\_Archive.zip  
**Size:** 609.4Mb  
**Format:** application/zip  
**Description:** Tell Brak Archive (available July 20, 2015)

[View/Open](#)



**File Name:** OSU-RC\_KunjiCave\_Archive.zip  
**Size:** 457.6Mb  
**Format:** application/zip  
**Description:** Kunji Cave Archive (available July 20, 2015)

[View/Open](#)

# Host and Habitat Index for Phytophthora Species in Oregon: Supplemental Spreadsheet

Hansen, Everett; Reeser, Paul; Sutton, Wendy; Sims, Laura

---



**File Name:**

[View/Open](#)

HansenEBotanyandPlantPathologyHostHabitatIndexPhytophthora.xlsx

**Size:** 41.90Kb

**Format:** Microsoft Excel

**Description:** Dataset

**URI:** <http://hdl.handle.net/1957/51863>

**Date:** 2014-09-04

## **Description:**

---

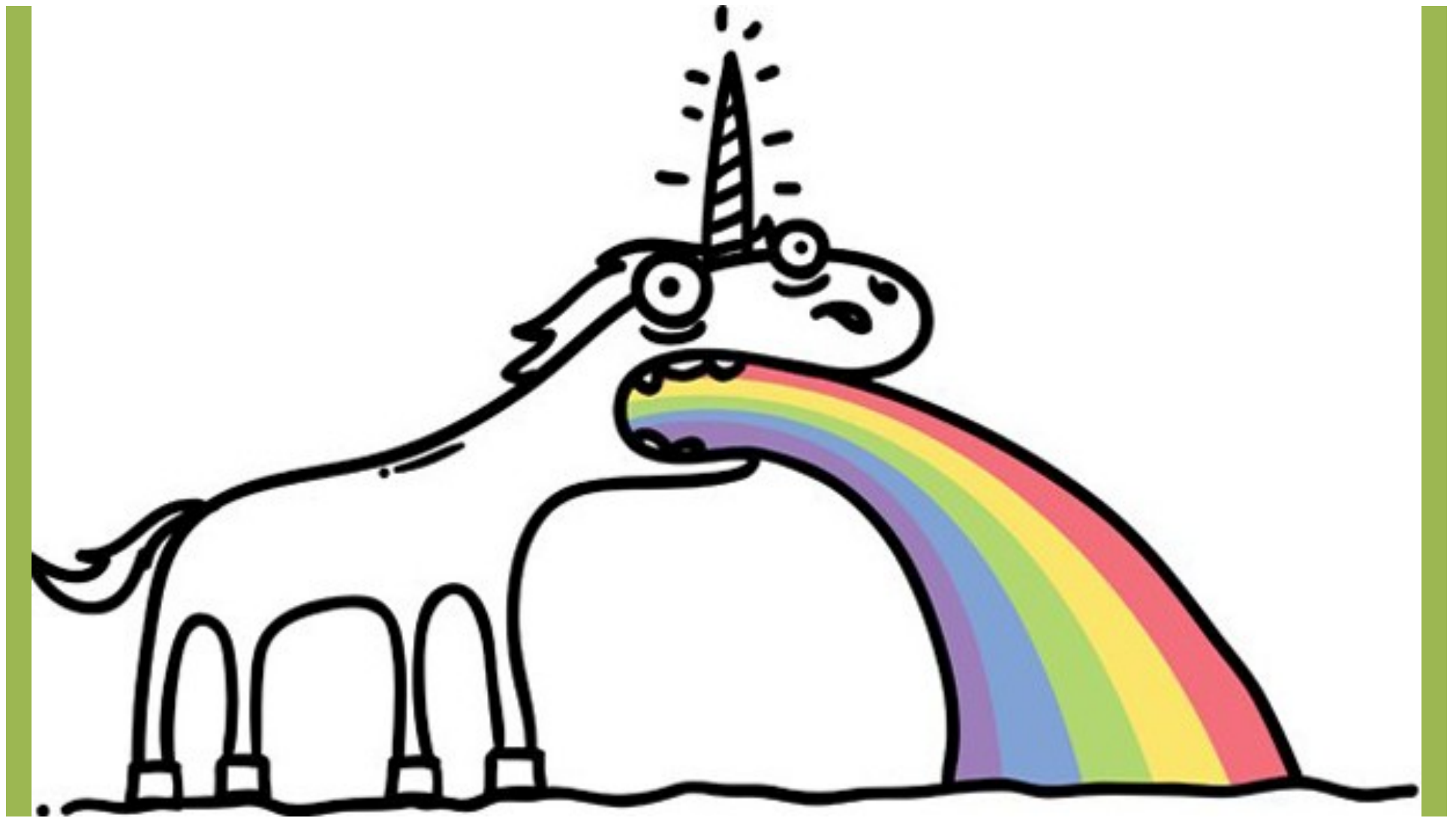
Suggested citation: "Hansen, Everett; Reeser, Paul; Sutton, Wendy; Sims, Laura (2014): Host and Habitat Index for Phytophthora Species in Oregon: Supplemental Spreadsheet. OSU Libraries. Dataset. <http://dx.doi.org/10.7267/N99G5JR4>"

See related paper: Hansen, E., Reeser, P., Sutton, W., and Sims, L. 2012. Host and habitat index for Phytophthora species in Oregon. Forest Phytophthoras 2(1). doi: 10.5399/osu/fp.2.1.3026

**Keyword:** Phytophthora

Oregon





# Comparing options

Content Discovery	Digital Commons	D space	EPrints	Fedora	Islandora
Integrated Search Engine	Yes	Yes	Yes	Yes	Yes
Advanced Search with Facets	Yes	Yes	-	Yes	Yes
Full Text Search Indexing	Yes	Yes	Yes	Yes	Yes
Browse Options	discipline, community, publication, publication year, document type, author, and institution	communities & collections, publication date, author, title, subject, and document type	department, subject, year	collections and search facets	collections and search facets
Graphical Navigation of content	Image, icon, geolocation, and Discipline Wheel navigation	Add-on services available	Image	-	Image and icon

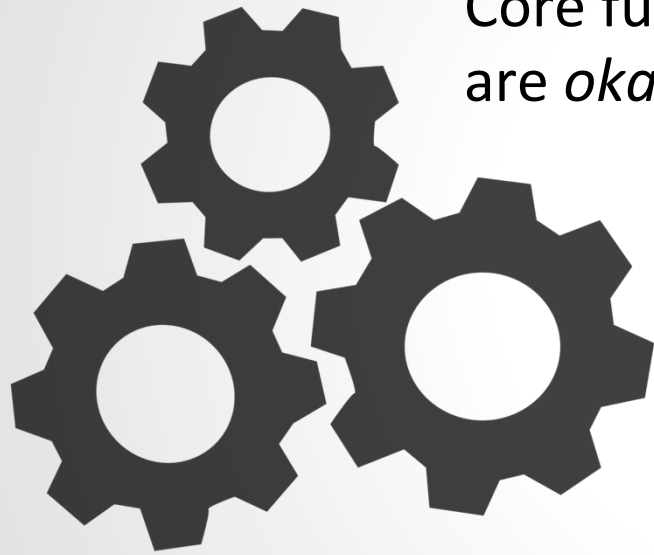


# How to proceed?

“What do  
you need in  
an IR?”



# Requirements analysis results



Core functions  
are *okay*



UI/UX, reporting,  
linkages a regular  
*disappointment*

coral

Title  Contains

Showing 10 out of a total of 259 results. (0.182 seconds)

Now showing items 1-10 of 259

[1](#) [2](#) [3](#) [4](#) ... [26](#) [Next Page](#)



[Macroalgae Decrease Growth and Alter Microbial Community Structure of the Reef-Building Coral, \*Porites astreoides\*](#)

Thurber, Rebecca Vega; Burkepile, Deron E.; Correa, Adrienne M. S.; Thurber, Andrew R.; Shantz, Andrew A.; Welsh, Rory; Pritchard, Catharine; Rosales, Stephanie (Public Library of Science, 2012-09-05)

With the continued and unprecedented decline of coral reefs worldwide, evaluating the factors that contribute to coral demise is of critical importance. As coral cover declines, macroalgae are becoming more common on tropical reefs. Interactions...



[Devonian tabulate corals of the Great Basin](#)

Flory, Richard Aerts (1974-08-30)



[What is killing the corals? Viral and bacterial interrogations using metagenomics and microscopy](#)

Soffer, Nitzan (2013-11-27)

Corals have multiple roles in maintaining ocean health and are some of the world's most diverse ecosystems. The coral animal is host to a multitude of taxa, including symbiotic dinoflagellate algae, fungi, bacteria, protists, and viruses...

**Browse**

All of ScholarsArchive@OSU  
[Communities & Collections](#)  
[Issue Date](#)  
[Authors](#)  
[Titles](#)  
[Subjects](#)

**My Account**

[Logout](#)  
[My Profile](#)  
[Submissions & Tasks](#)

**Administrative**

Access Control

[People](#)  
[Grs](#)  
[Aut](#)

Registr:

[Me](#)  
[For](#)

[Items](#)  
[Withdr](#)  
[Embar](#)  
[Contro](#)

[Statist](#)  
[Import](#)  
[Curati](#)

**Disco**

Author

[Alb](#)  
[Hix](#)  
[Mix](#)

SA@OSU Home → [Electronic Theses and Dissertations](#) → [Electronic Theses and Dissertations](#) → View Item

## What is killing the corals? Viral and bacterial interrogations using metagenomics and microscopy

Soffer, Nitzan



File Name: SofferNitzan2013.pdf [View/Open](#)  
Size: 3.935Mb  
Format: PDF  
Description: Dissertation

URI: <http://hdl.handle.net/1957/44631>

Date: 2013-11-27

**Abstract:**

Corals have multiple roles in maintaining ocean health and are some of the world's most diverse ecosystems. The coral animal is host to a multitude of taxa, including symbiotic dinoflagellate algae, fungi, bacteria, protists, and viruses. Environmental stressors and disease agents can perturb the delicate balance of the coral host and its microbiota, which can lead to disease. This ultimately results in reduced fitness and/or mortality. There are over 30 described coral disease signs, but with a few exceptions, little is known about their potential etiological agents. Without knowledge on the causes of these diseases, little can be done to mitigate future outbreaks. Chapter 1 of this dissertation provides examples for studying novel diseases in difficult to study organisms with the use of metagenomic tools. Armed with these metagenomic tools and electron microscopy, this dissertation aimed to determine potential pathogens in two coral diseases, White Plague disease (WP), and Growth Anomalies (GAs). First, I set to determine whether viruses may be involved in WP disease from a 2010 outbreak in the US Virgin Islands (USVI). In chapter 2, I compared viromes from 21 *Montastraea annularis* samples (7= Diseased, 7= Diseased=Bleached, 5= Bleached, 2= Healthy) and surrounding seawater (n=2). After comparing the viromes, I found that small circular REP- encoding eukaryotic ssDNA viruses (SCSDV) similar to circo and nano viruses were associated with WP diseased tissue. and thus potential pathogens. Electron microscopy confirmed the presence of

**Search ScholarsArchive@OSU**

Search ScholarsArchive@OSU  
 This Collection  
[Advanced Search](#)

**Browse**

All of ScholarsArchive@OSU  
[Communities & Collections](#)  
[Issue Date](#)  
[Authors](#)  
[Titles](#)  
[Subjects](#)

This Collection  
[Issue Date](#)  
[Authors](#)  
[Titles](#)  
[Subjects](#)

**My Account**

[Logout](#)  
[My Profile](#)  
[Submissions & Tasks](#)

**Actions**

[Create version of this item](#)  
[Edit this item](#)  
[Export Item](#)  
[Export Metadata](#)

Refine Results

- Subject**
- [United States](#) (9,889)
  - [Science](#) (5,174)
  - [Agriculture](#) (3,760)
  - [Botany](#) (2,687)
  - [Forests and forestry](#) (2,613)
  - [more...](#)
- Author**
- [Geological Survey \(U.S.\)](#) (2,632)
  - [United States, National Technical Information Service,](#) (1,682)
  - [United States, Office of the Federal Register,](#) (1,430)
  - [United States, Government Printing Office,](#) (1,302)
  - [United States, Patent and Trademark Office,](#) (1,262)
  - [more...](#)
- Language**
- [English](#) (88,939)

Search Results: 90,864 items found for **forest ecology** in Full-Text + All Fields

All Items (677,743) Full View (90,864)

25 per page    Prev 1 2 3 4 5 6 7 8 ... 800 Next >>

Select all on page    Select Collection    Add Selected

- The forest ecosystem of southeast Alaska. 7, Forest ecology and management / Arland S. Harris and Wilbur A. Farr. no. 25 by Harris, A. S. Published 1974  
[Catalog Record](#) [Full view](#)
- The forest ecosystem of southeast Alaska. 7, Forest ecology and management / Arland S. Harris and Wilbur A. Farr. by Harris, A. S. Published 1974  
[Catalog Record](#) [Full view](#)
- Forest ecology/plant identification trail: Muddy Mountain Eng...

[« Back to "Full text search" results](#)

**About this Book**

The forest ecosystem of southeast Alaska. Arland ... . Harris, A. S.

[View full catalog record](#)

Copyright: [Public Domain, Google-digitized.](#)

**Get this Book**

[Find in a library](#)  
[Download this page \(PDF\)](#)  
[Download whole book \(PDF\)](#)  
*Partner login required*

**Add to Collection**

[Login](#) to make your personal collections permanent

Select Collection    Add

**Share**

Navigation controls: Home, About, Collections, Help, Feedback, Jump to, Go, Search in this text forest ecology Find

Document navigation icons: Home, Back, Forward, Search, Refresh, etc.

PREFACE

This is the seventh in a series of publications summarizing knowledge about the forest resources of southeast Alaska.

Our intent in presenting the information in these publications is to provide managers and users of southeast Alaska's forest resources with the most complete information available for estimating the consequences of various management alternatives.

In this series of papers, we will summarize published and unpublished reports and data as well as the observations of resource scientists and managers developed over years of experience in southeast Alaska. These compilations will be valuable in planning future research on forest management in southeast Alaska. The extensive lists of references will serve as a bibliography on forest resources and their utilization for this part of the United States.

Previous publications in this series include:

1. The Setting
2. Forest Insects
3. Fish Habitats
4. Wildlife Habitats
5. Soil Mass Movement
6. Forest Diseases

Show results for

Related Searches: moby dick hardcover, moby dick herman melville, moby dick penguin classics.

Any Category Books Literature & Fiction Classics

Refine by

Amazon Prime

Prime Eligible

New Releases

Last 30 days

Last 90 days

Coming Soon

Book Format

Hardcover

Kindle Edition

Audible Audio Edition

Paperback

Audio CD

Board Book

Author

Herman Melville

Mark Twain

Joseph Conrad

Robert Louis Stevenson

Nathaniel Philbrick

Barry Moser

Christopher Buckley

Dick Hill

Robert Hampson

Edward W. Said

Mark Nelson

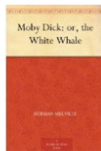
Jay Parini



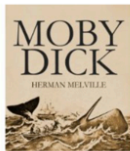
Moby Dick (Wordsworth Classics) (Wadsworth Collection) Dec 5, 1999 \$3.95 Prime Paperback 4.5 stars (12)



Moby-Dick Mar 5, 1998 \$0.45 - \$17.20 Prime Kindle Edition, Paperback... More 4.5 stars (971)



Moby Dick: or, the White Whale Mar 24, 2011 \$0.00 - \$9.96 Prime Kindle Edition, Paperback 4.5 stars (512)



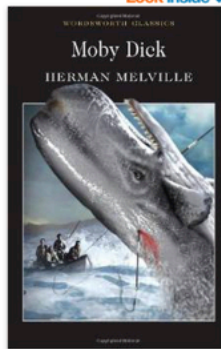
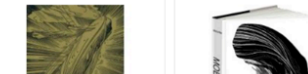
MOBY DICK (illustrated)



Moby Dick: Or, the Whale 1877



Moby-Dick: A Lonnman



See all 3 images

Moby Dick (Wordsworth Classics) (Wadsworth Collection) Paperback – December 5, 1999

by Herman Melville (Author)

4.5 stars (12 customer reviews)

ISBN-13: 978-1853260087 | ISBN-10: 1853260088

Buy New

Price: \$3.95 Free Prime shipping when in stock

58 New from \$2.23 81 Used from \$0.85 2 Collectible from \$7.74

	Amazon Price	New from	Used from
Paperback	\$3.95 Prime	\$2.23	\$0.85

Get \$10 For Each Friend Who Joins Amazon Student Learn more >

With an Introduction and Notes by David Herd. Lecturer in English and American Literature at the University of Kent at Canterbury Moby-Dick is the story of Captain Ahab's quest to avenge the whale that 'reaped' his leg. The quest is an obsession and the novel is a diabolical study of how a man becomes a fanatic. But it is also a hymn to democracy. Bent as the crew is on Ahab's appalling crusade, it is equally the image of a co-operative community at work: all hands dependent on all hands, each individual

Read more

"Funny Girl" by Nick Hornby

"One of the funniest and most subtle voices in contemporary fiction."--Chicago Tribune. Check out Nick Hornby's first novel in 5 years: Funny Girl. Learn more

Frequently Bought Together



Price for all three: \$14.00

Add all three to Cart

Add all three to Wish List

Some of these items ship sooner than the others. Show details

This item: Moby Dick (Wordsworth Classics) (Wadsworth Collection) by Herman Melville Paperback \$3.95

NETFLIX

Browse

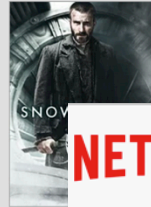
Taste Profile

KIDS

Search



Action & Adventure



Recently Added



NETFLIX

Browse

Taste Profile

KIDS

Search



Lost

2004-2010 TV-14 6 Seasons

★★★★★ Not Interested

Our best guess for stevie-poo: 5 stars

Average of 10,600,779 ratings: 3.8 stars

After their plane crashes on a deserted island, a diverse group of people must adapt to their new home and contend with the island's enigmatic forces.

+ My List

Recommend to a friend

Season 1

Summary (2004)

Stranded on a tropical island after their plane crashes 1,000 miles off course, a group of castaways must learn to survive in their new home.

Show Details

Creator

J.J. Abrams

Jeffrey Lieber

Damon Lindelof



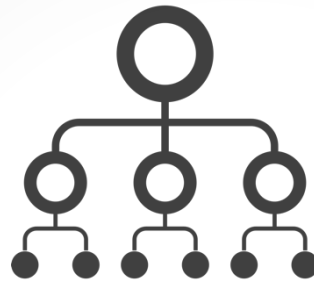
# So, the next platform should...



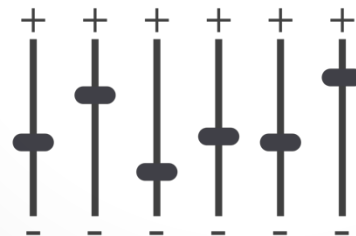
link between  
objects



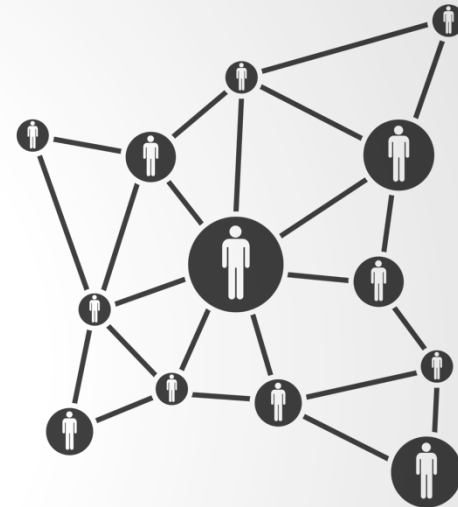
improved  
UI & UX



hierarchical  
relationships



extendable &  
customizable



have a broad  
community of  
developers  
& users



+



## Pros



easy  
setup



easy to  
maintain

## Cons



difficult  
(impossible?) to  
extend &  
customize

not  
flexible

lack of  
features to  
support data



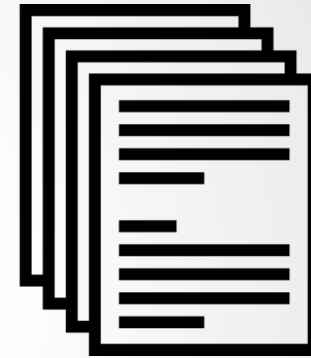


**D SPACE**

### Pros

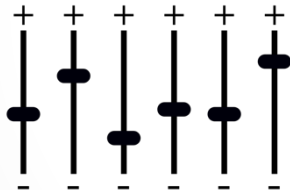
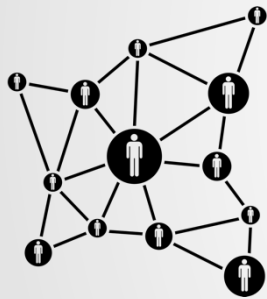


### Cons





## Pros



flexible, customizable  
supported by broad community

## Cons



requires substantial  
development work

## And, our decision is...

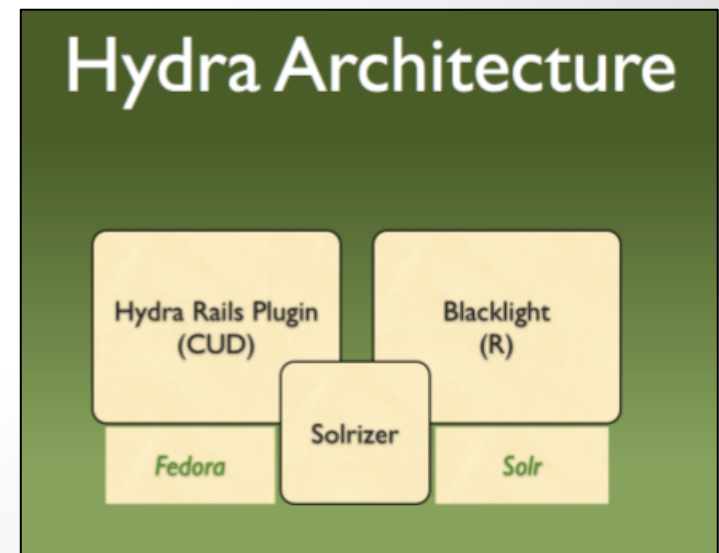
Sufia, a Hydra platform

The decision is made on:

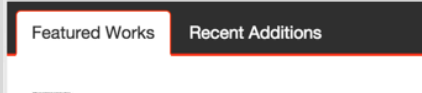
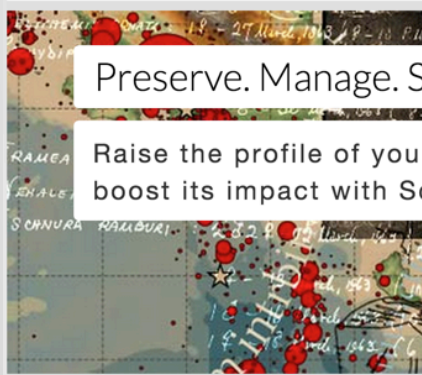
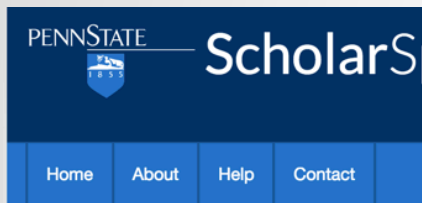
- functionalities
- long-term sustainability
- development resources

Development resources

- local: OSU Libraries developers
- Hydra community: development interest aligns with our needs



# And, our decision is...



### Limit your search

- Resource Type ▸
- Collection ▸
- Creator ▸
- Keyword ▾
  - learning sciences, science learning, mobile computing (2)
  - Children--Education--Florida (1)
  - Department of Commerce Publications (1)
  - Digital Collection Inventory, Department of Commerce (1)
  - ICIK newsletter (1)
  - [more Keywords>](#)

You searched for: chickens

1 - 6 of 6

Sort by relevance ▾ 10 per page

## 1. Teach Flori [Downk

TEACHING TENANT FARM CHILDREN: RURAL EDUCATION IN NORTH FLORIDA AND SOUTH GEORGIA IN THE EARLY TWENTIETH CENTURY

Paper presented at the Missouri Valley History Conference March 7, 1996

Susan Hamburger, Ph.D.

**Abstract:**

On the former cotton plantations of Leon County, Florida, along the south-central Georgia border and often overlapping it, the end of Reconstruction brought new owners and different uses for the acres of the land. Because the areas remained connected to each other after the Civil War, it retained many vestiges of antebellum plantation life, a life that the new plantation owners sought to control and the old ones wished to preserve. The region today contains more than a hundred working small farming plantations, growing some shadblow, cotton, and sugarcane. The tenant farmers, many of whom stayed on the same or nearby plantations their families had worked as slaves, no longer could grow large fields of cotton for cash but were confined to small, scattered patches as the landscape changed to accommodate the boll weevil. The northern game hunters brought up the hundred-or-so-acre cotton plantations to about 18,000 acres in 1910 and 18,000 acres by 1930 of Leon County's 426,752 acres.<sup>1</sup> Members of the Haman family and business associates of Cleveland, Ohio, and Standard Oil executives alone purchased over 70,000 acres in the Thomasville, Georgia Tallahassee, Florida region.<sup>2</sup> These new forest and game lands meant many plantations were no longer their owners' small grow-

Of a total county population in 1910 of 18,285, eighty percent (15,000) were African Americans; by 1930 the general population increased to 21,046 and Blacks to

[Download the full-sized PDF](#)

### Actions

- [Download](#) | [Analytics](#)
- Export to: [EndNote](#) | [Zotero](#) | [Mendeley](#)
- 

### Collections

Tracy Langkilde, Associate Professor, Biology

## Teaching Tenant Farm Children: Rural Education in North Florida and South Georgia in the Early Twentieth Century

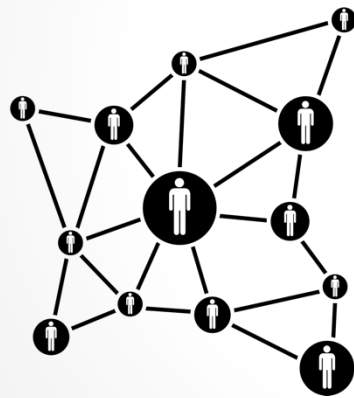
### Descriptions

<b>Resource type</b>	Research Paper
<b>Title</b>	Teaching Tenant Farm Children: Rural Education in North Florida and South Georgia in the Early Twentieth Century
<b>Creator</b>	Hamburger, Susan
<b>Contributor</b>	
<b>Description</b>	Paper presentation at the Missouri Valley History Conference, Omaha, Nebraska, Marcy 7, 1996
<b>Keyword</b>	Children--Education--Florida tenant farmers
<b>Rights</b>	Attribution-NonCommercial-NoDerivs 3.0 United States <input type="button" value="C"/>
<b>Publisher</b>	
<b>Date</b>	1996



# solutions

how does this move solve our exemplar problem?



## Next Steps

- phased approach for project this large
- phase I
  - implement all functions we need for support research data
  - migrate data collections to new repository
- phase II
  - implement mediated deposit
  - train library staff
  - migrate all collections to new repository

