

Feb 10th, 3:05 PM - 4:00 PM

Library Widget in the LMS: Way Cooler Than it Sounds

Mike Flakus
Portland State University

Amy R. Hofer
Portland State University, hofera@linnbenton.edu

Let us know how access to this document benefits you.

Follow this and additional works at: <https://pdxscholar.library.pdx.edu/onlinenorthwest>

Flakus, Mike and Hofer, Amy R., "Library Widget in the LMS: Way Cooler Than it Sounds" (2012). *Online Northwest*. 11.
<https://pdxscholar.library.pdx.edu/onlinenorthwest/2012/Presentations/11>

This Lightning Talk is brought to you for free and open access. It has been accepted for inclusion in Online Northwest by an authorized administrator of PDXScholar. For more information, please contact pdxscholar@pdx.edu.

Library widget in the LMS: Way cooler than it sounds

Amy R. Hofer, Distance Learning Librarian

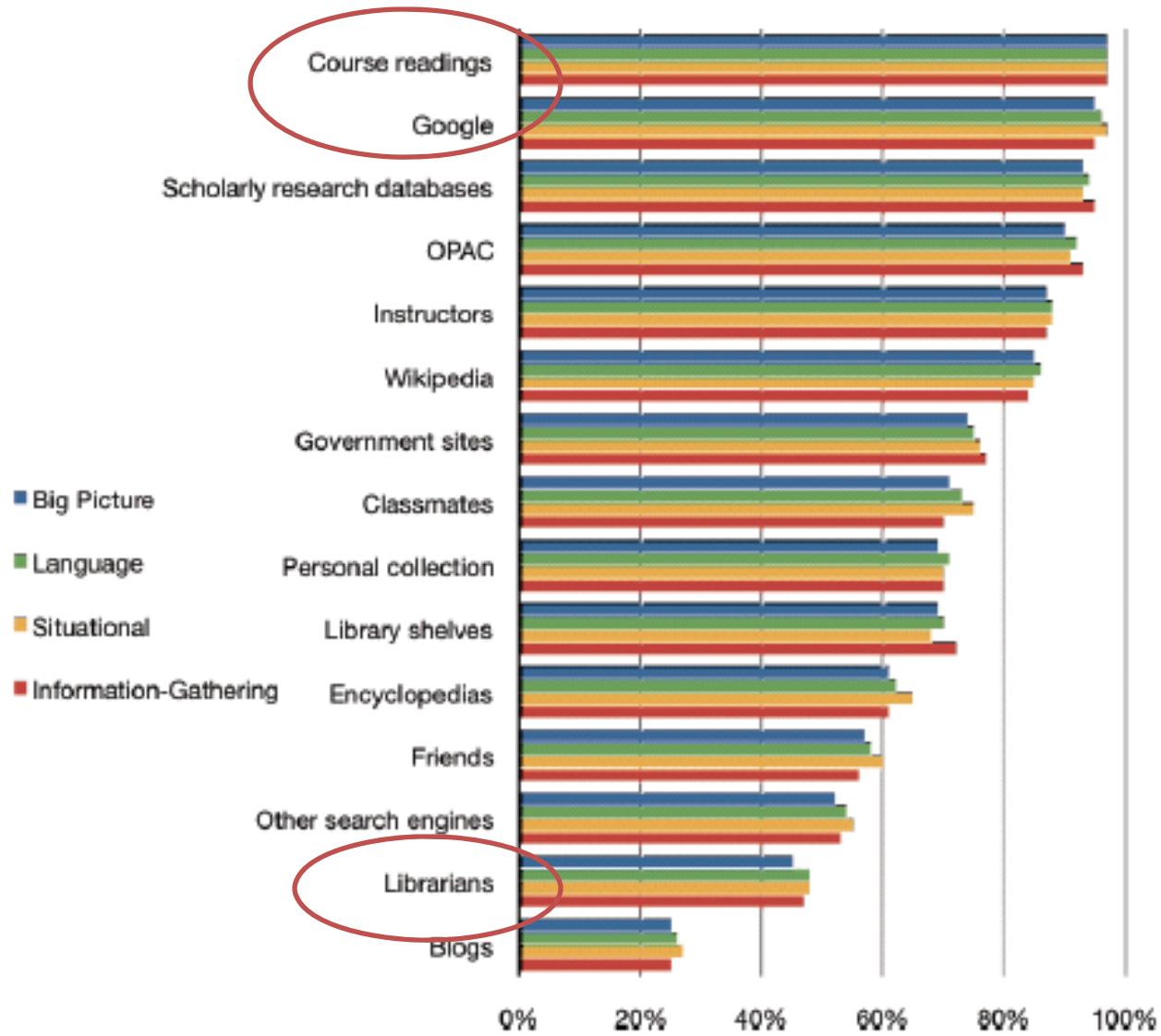
Mike Flakus, Lead Web Programmer

Portland State University

Online Northwest, February 10, 2012



Figure 8: Resources Used When Course-Related Research Contexts Arise



Head, A.J., & Eisenberg, M.B. (2009). Resources used when course-related research contexts arise. In *Lessons learned: How college students seek information in the digital age*. Available from projectinfolit.org



Library Resources



[Guide to Library Research](#)

**Ask
Us!**



[Visit the PSU Library Website](#)

What's in a Widget?

Basic

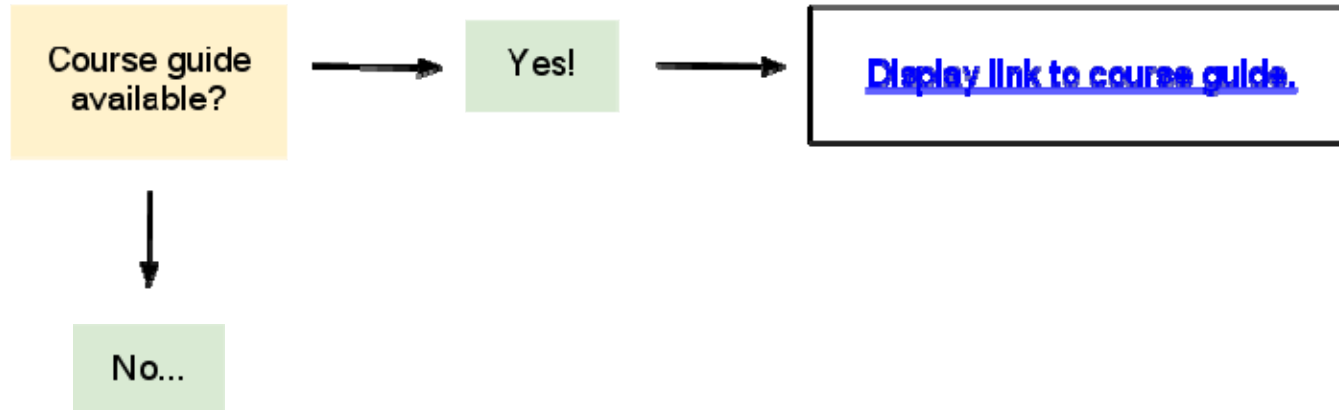
- Catalog Search Box
- General Links to Popular Library Resources

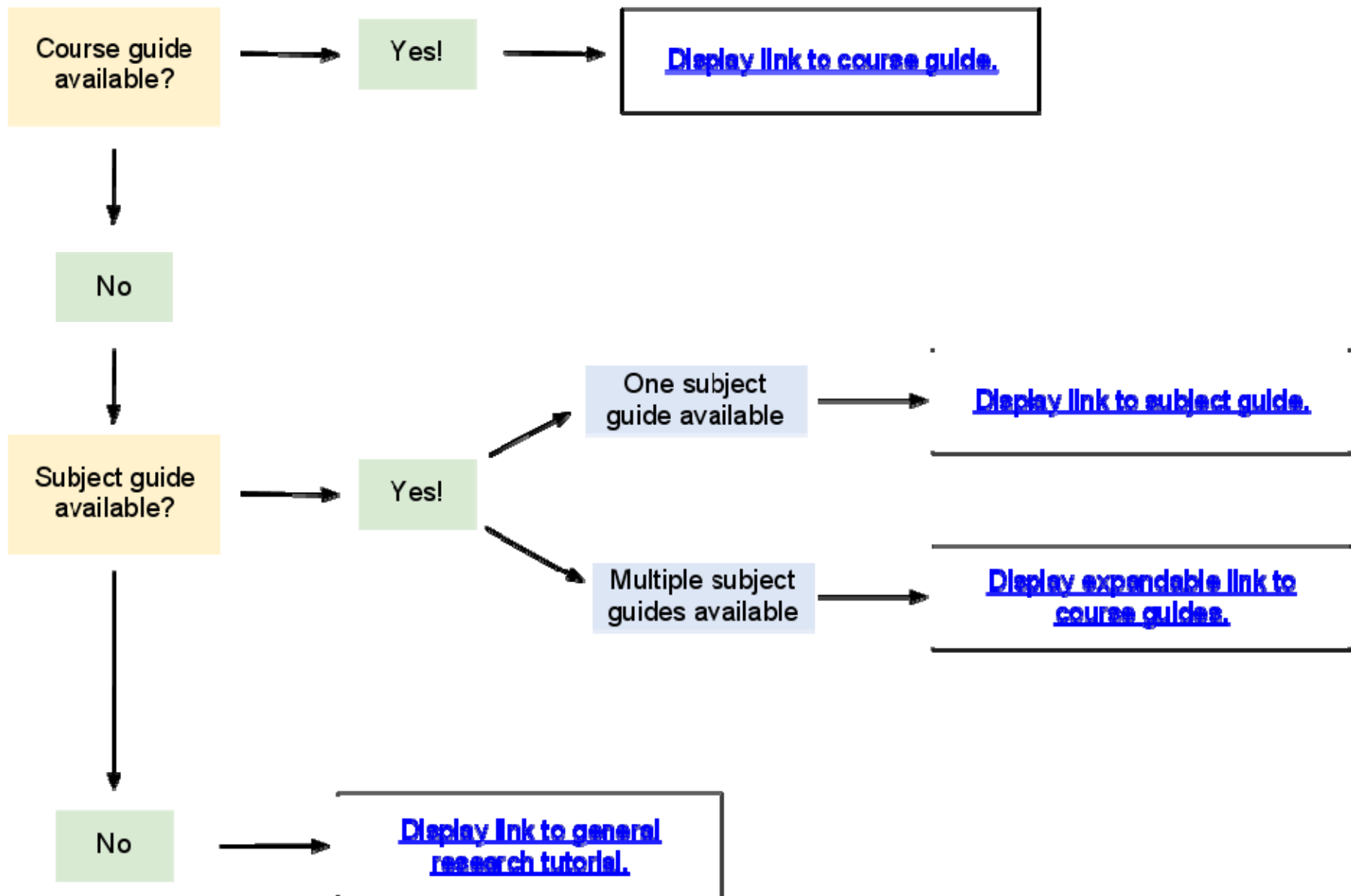
Cool!!

- Contextually Aware Content



Which guide link to display?



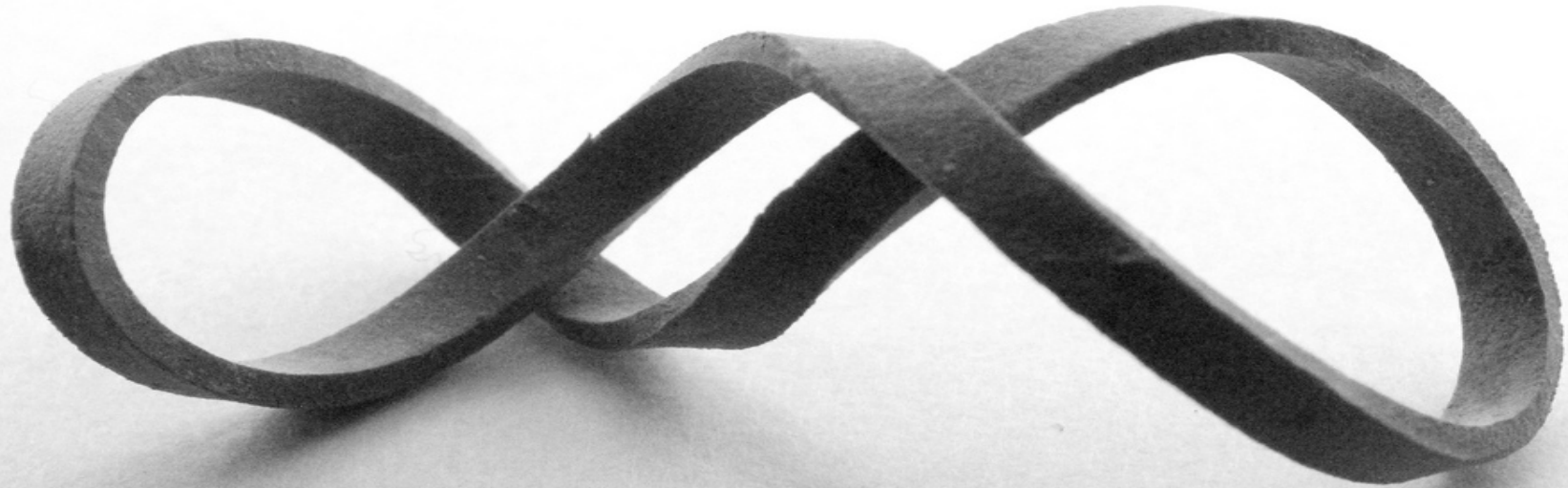


Javascript



Design Flexibility

- Size and shape of dynamic content
- Placement of the widget in the LMS



las

Flickr photo cc las - initially

Page views are massive!

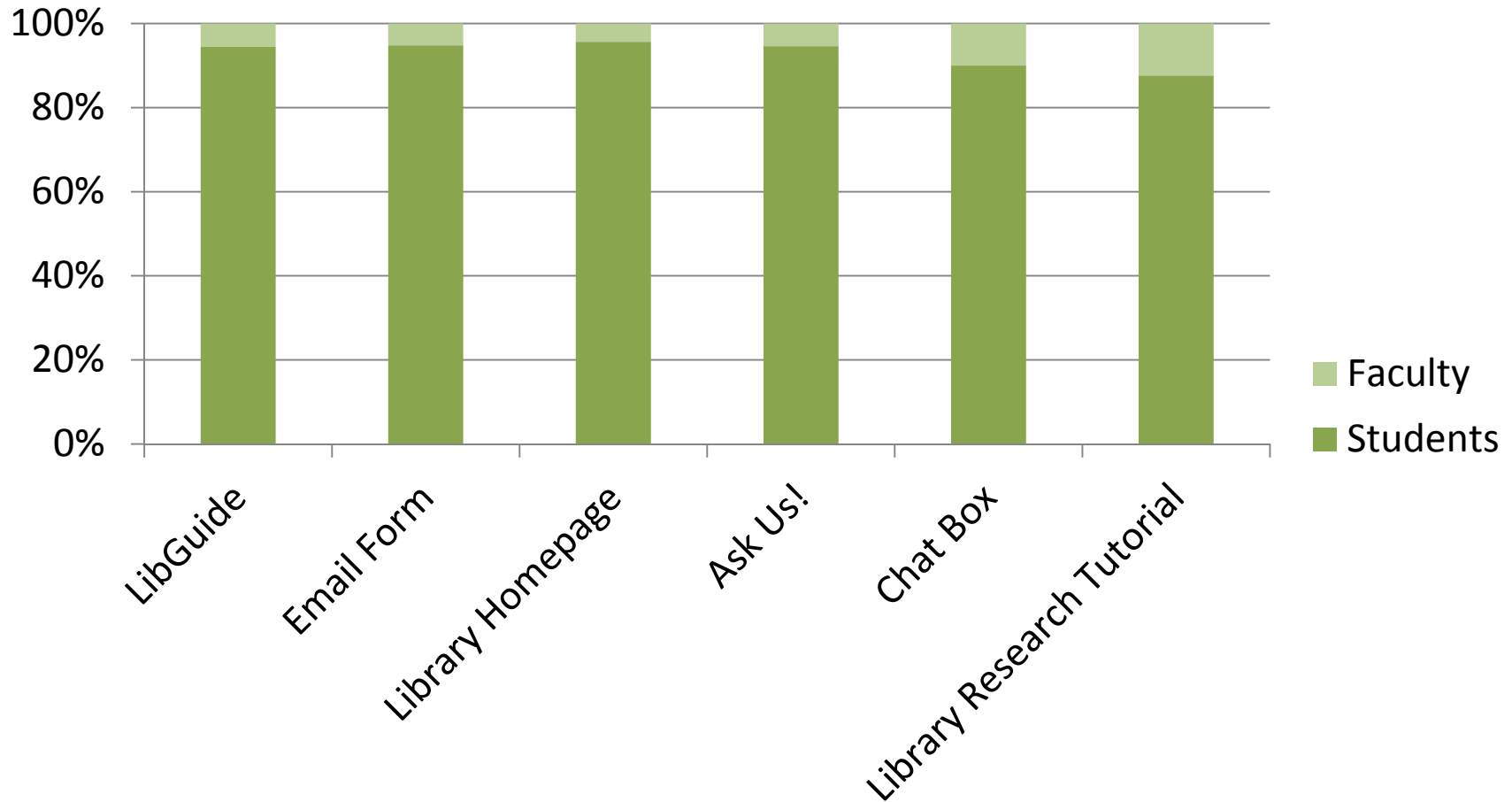
Page	# of views in January 2012
Library homepage	99,776
All library website pages	334,743
D2L course home page	564,630!!! OMG!

Are viewers clicking?

Destination	Fall Quarter 2011 63 courses	January 2012 612 courses
LibGuide	n/a	1193
Catalog search	n/a	495
Email Form	18	387
Library homepage	11	185
Ask Us!	2	93
Chat Box	6	90
Library Research Tutorial	24	81
Total:	65	2530

Winter 2012 to date

Who is clicking where?

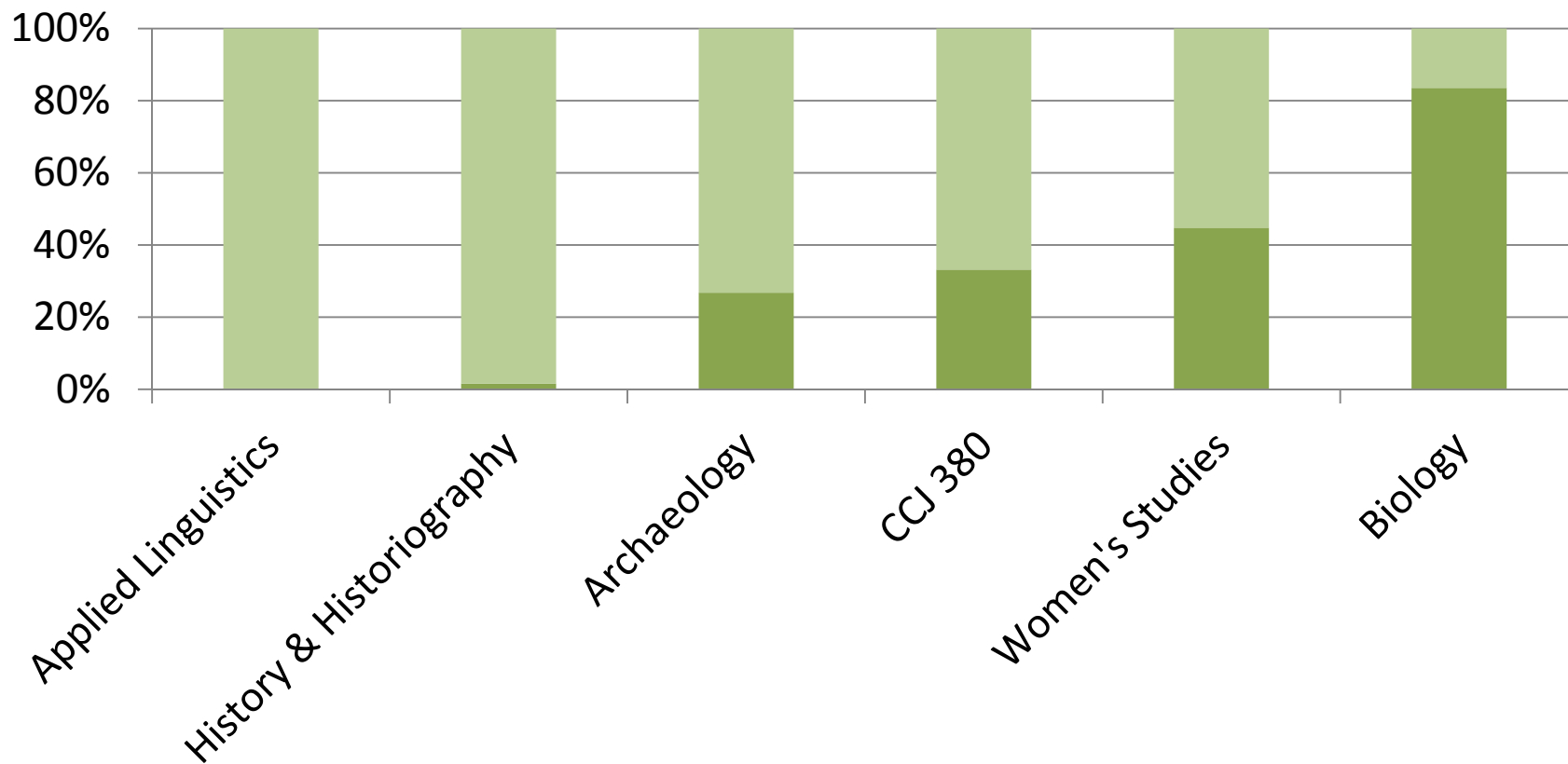




LibGuides Stats

Is the widget making a difference?

■ Widget hits, Jan 2012 ■ Other hits, Jan 2012



Next steps...

- Adding direct links to course-relevant electronic reserves




Which might look like...


PSU Library

Find books & more...

[Course Guide for BA 301 Research & Analysis of Business Problems](#)

Course Reserves for BA 301:

-  [Supplemental Readings for BA 301 -- BUS 301 NOB #1](#)
-  [Research and Analysis of Business Problems ---#2](#)

Ask Us!    

[Visit the PSU Library Website](#)

Other LMS Platforms...

Resources

[Pre-Term Course Materials](#)
[System Requirements](#)
[Residency Policy](#)
[Documentation and Tutorials](#)
[Residency Schedule](#)

Calendar

February 2012

Sun	Mon	Tue	Wed	Thu	Fri	Sat
			1	2	3	4
5	6	7	8	9	10	11
12	13	14	15	16	17	18
19	20	21	22	23	24	25
26	27	28	29			

Welcome to the PSU Online MBA Program

PSU's Online MBA+ is designed for ultimate flexibility. It is carefully tailored to provide access to the best, fully accredited MBA education possible, without the constraints of a traditional, campus based program. Online delivery of course content and interaction between students and with professors takes place using a web-based course management system called Moodle, which provides a powerful and sophisticated e-learning environment. The online component of the program is combined with intensive face-to-face campus residencies four times per academic year. These residencies focus on lectures, presentations, group work and team building with your professors and members of your class and cohort. This combination of flexible online content delivery and personal interaction will help prepare you for the next step in your career.

Need Help? Please contact: OnlineMBAhelp@pdx.edu.

Residency Schedule is [here](#).

My courses

 [Winter 2012](#)

PSU Library

Find books & more...

Go

[Course Guide for BA 301
Research & Analysis of
Business Problems](#)

Ask
Us!



[Visit the PSU Library Website](#)



CUSTOMIZABLE WIDGET



The End

Mike Flakus
mflakus@pdx.edu
503.725.4641

Amy R. Hofer
ahofer@pdx.edu
503.725.9939