

Texas Gain Tests

for Young Beef Cattle 1959-60

FORM 1—WEANING RECORD

Use Separate Sheets for Bulls and Heifers

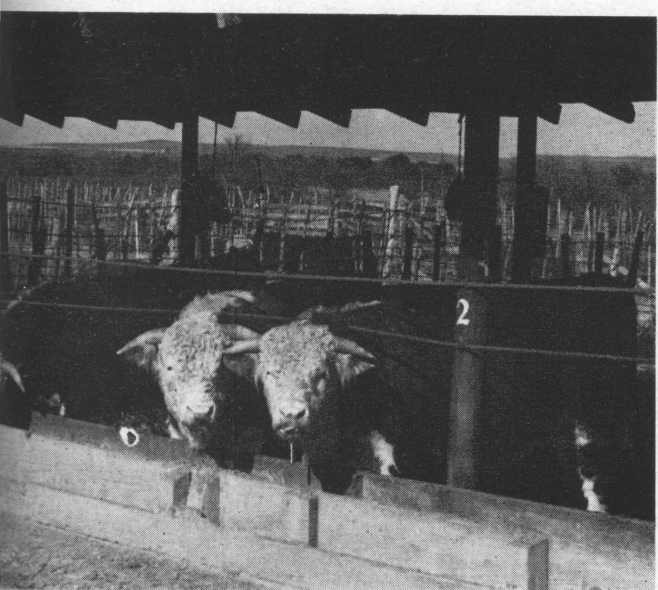
Ref. No.

Date Nov. 1, 59

Sex HEIF

Dam	Sire	Date of birth	Age in days	Actual weight	Adj. Wt. 205 days	Age of dam	Adj. Wt. dam's age	Grade	Weight group	Rating
283	JHR	3-1-9	245	585	510	4-	510	C+	3	5
905	JHR	3-1-9	245	620	535	7-	535	F	2	3
22	PM	3-6-9	240	545	480	6-	480	C	4	7
399	PM	3-9-9	237	455	415	3(5%)	436	C	5	8
117	PM	3-12-9	234	590	530	5-	530	C+	2	"

95 460 2(10%)
10



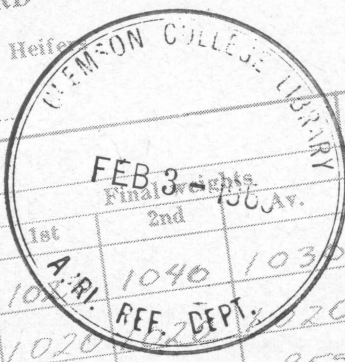
N RECORD

Ref. No. 1-59

Bulls and Heifers

Sex BULLS

59



4th wt. & gain	1st	2nd	Final weights	Total gain	Av. daily	140-day gain
945/75	1020	1030	1040	400	2.85	
950/65	1020	1020	1030	380	2.71	
890/70	950	960	955	335	2.39	
1050/80	1145	1135	1140	425	3.03	
1040/95	1140	1150	1145	480	3.42	
930/75	1010	1020	1015	340	2.42	
890/60	980	970	975	360	2.57	
830/65	830	830	830	450	3.21	
935/85	1020	1120	1110	370	2.64	
1000/75	1080	1080	1080	390	2.78	

665	665	665	745/70	805/60	855/50	890/60	980	970	975	360	2.57
680	670	675	700/85	765/65	830/65	890/60	980	970	975	450	3.21
610	620	615	760/95	850/90	935/85	1020/85	1120	1110	1115	370	2.64
645	685	665	760/50	855/95	925/70	1000/75	1080	1080	1080	390	2.78
700	720	710	715/75	800/85	875/75	945/70	1035	1025	1030	390	2.78
635	645	640									

[Blank Page in Original Bulletin]

TEXAS GAIN TESTS FOR YOUNG BEEF CATTLE 1959-60

(Conducted cooperatively by beef cattle producers and the Texas Agricultural Extension Service at nine locations)

L. A. MADDOX, JR.
U. D. THOMPSON
EXTENSION ANIMAL HUSBANDMEN

THE TEXAS AGRICULTURAL EXTENSION SERVICE is pleased to prepare and issue this publication as a guide for conducting gain tests for young beef cattle in Texas. The resources and services of Extension are extended also to a state-wide educational program in connection with these tests as a part of the overall educational program for beef producers. Included in the program are phases such as animal health, pasture improvement, higher percentage calf crop, weaning weights, ability to gain rapidly and ability to reach the proper grade and finish.

Ability to make fast gains after weaning is recognized as an important characteristic of beef cattle. More importance has been placed on this characteristic since the Texas Agricultural Experiment Station established that: (1) wide differences exist between the gains of individual cattle, (2) many of these differences are due to heredity and (3) gaining ability can be increased by using high-gaining bulls and heifers.

Members of the Texas Agricultural Extension Service and Experiment Station staff, in conference with representatives of the Beef Cattle Breed Associations and performance testing associations agree that the following rules would help standardize gain tests and thus provide the greatest amount of useful information and a basis for making meaningful comparisons.

The minimum requirements established for beef cattle gain tests are based on 25 years of research in Texas and other states and are as follows:

1. The cattle should be on the test ration for 14 days before the initial weights are taken.
2. Rate-of-gain tests on bulls should last at least 140 days for reliable results.
3. Tests for heifers should last at least 112 days.

4. The cattle should be 6 to 13 months old when the test begins.

These standards are now accepted by the various states and are officially specified by the Performance Registry International. Unofficial tests can be conducted with cattle up to 18 months of age for the owner's information.

Official gain tests can be conducted by beef cattle producers on their own farms and ranches with their own cattle. Some producers prefer to send young cattle to central gain tests supervised by the Texas Agricultural Extension Service or the Texas Agricultural Experiment Station. The rules and regulations of nine gain tests that accept breeders' cattle are included in this publication.

These gain tests are not designed to be the only measure of production of young cattle. Other characteristics, such as reproductive ability, weaning weight, ability to reach the desired finish and grade at the proper time and freedom from hereditary defects should also be considered in selecting superior breeding cattle.

I. PURPOSES

- A. To provide cooperating farmers and ranchers a means of identifying outstanding cattle for use in improving the productive efficiency of their herds and in improving the grade or beef conformation of young beef animals produced.
- B. To demonstrate an accepted method of gain testing for use on farms and ranches.
- C. To provide cattlemen the opportunity of buying production tested sires.
- D. To acquaint farmers and ranchmen with the value of performance and production tests and records in more efficient beef production.

II. HEALTH AND VETERINARY SERVICE

A. TUBERCULOSIS—For each animal entered in a test, the owner must submit a certificate showing a negative reaction within 30 days prior to delivery to the test unless the animal is from an accredited herd certified by state or federal veterinarians. *Exceptions* — Bulls entered at Balmorhea, Fort Worth and Webb County may be tested after delivery if requested. Reactors must be removed after notification to the owner.

B. BRUCELLOSIS—All animals entered in a test must be accompanied by a certificate showing a negative reaction within 30 days prior to delivery or of official vaccination at least 7 days before delivery.

Exceptions—Bulls entered at Fort Worth and Webb County will be tested for brucellosis after delivery if requested.

All bulls entered at Balmorhea, McGregor and Panola County will be subject to retest 3 or 4 weeks after arrival. Reactors must be removed after notification to the owner.

C. LEPTOSPIROSIS—All animals entered must be vaccinated for leptospirosis at least 3 weeks and not more than 6 weeks before delivery.

D. All animals will be treated for external and internal parasites as needed.

E. Services requiring special medicines and/or equipment will be obtained from practicing, accredited veterinarians when necessary. Costs will be charged to the owner of the cattle treated.

III. LIABILITY

Those conducting the test will make every effort to safeguard the health of the animals on test, and to obtain professional veterinary service when necessary at owners' expense, but

will not be responsible for loss by fire, theft, injury or sickness.

IV. REPORTS

The animals will be weighed on 2 consecutive days after a 2-week adjustment period. The average of these two weights will be the initial weight. Periodic weights will be taken each 28 days. At the end of the test, the animals will be weighed on 2 consecutive days and the weights averaged for the final weight. A report of all animals on test, including weaning weight and individual weights and gains, will be mailed to each cooperator for each period and at the end of the 140-day test.

V. FIELD DAY

The public is invited to visit the testing stations, follow the progress of the tests and attend the field days. At each field day the gains on test and averages by sire groups will be shown. No cooperator may remove his test animals, except for veterinary reasons, until after the field day program or end of test, if there is no field day.

VI. PERFORMANCE REGISTRY INFORMATION

The Performance Registry International is an organization which certifies and records outstanding production records of individual beef cattle of all recognized breeds on weaning weight, 12-month weight and gain on 140-day test. For detailed information of the established standards contact your county agent or write to Box 660, Canyon, Texas.

These tests are recognized as "official" by the Performance Registry International. Applications for registration on rate of gain will be submitted for cattle which make 364 pounds of gain in 140 days and otherwise qualify if the owner makes such a request.

PANOLA COUNTY TESTING PROGRAM

Carthage, Texas

I. ELIGIBILITY FOR ENTRY

A. Bull calves must be registered in one of the recognized beef breed associations. Animals must be tattooed or branded. Registration numbers, exact birth dates and tattoo numbers must accompany application and initial deposit.

B. Tests on two age groups will be conducted. Both groups will start at the same time.

The bulls in the older group must have been dropped in October, November and December of 1958, with September, 1958 bulls accepted with a \$10 penalty per bull for extra feed. Bulls dropped in January, February and March will make up the younger group.

II. DATES

Application mailed—Sept. 1, 1959
Cattle delivered—Sept. 24, 1959

Initial weights—Oct. 8-9, 1959
Final weights—Feb. 24-25, 1960
Field day—Feb. 27, 1960
Sale—Feb. 27, 1960
Birth dates accepted—Oct. 1, 1958 to Mar. 31, 1959

III. FEEDING

The animals will be self-fed a mixture of cottonseed meal, ground ear corn, ground sorghum grain, cottonseed hulls, alfalfa hay, bonemeal and salt, or a comparable ration depending on the price of feedstuffs. Bonemeal and salt will be available free choice. Water will be before animals at all times. The feed used will make a growing ration, but will contain about 50 percent concentrate and 50 percent roughage so that a desirable finish will be obtained.

IV. COSTS

A. Each cooperating breeder will transmit with his preliminary application a deposit of \$25 for each animal. On or before delivery date, September 24, 1959, the following deposits will be due:

Bulls dropped in September—\$85 per head.
Bulls dropped in October, November and December—\$75 per head
Bulls dropped in January, February and March—\$65 per head.

Neck chains and tags will be paid for out of the feed deposit.

B. These fees are expected to cover the feeding costs. Any money left over will be prorated among the breeders on the basis of the number of animals in the age group. If feeding costs exceed the estimated fees, each breeder will be assessed an equal amount according to the number of bulls he has in the age group.

V. SALE

Sale date will be February 27, 1960. Test bulls may be entered in the sale or retained as desired by the owner. Only persons having bulls in the test will be allowed to enter other registered animals (male or female) in the sale, except with permission of the committee. Information on animals for sale and entry forms must be mailed not later than January 5, 1960. Sale information will be forwarded to all owners of animals in test. Further information and application forms may be obtained from:

County Agents Office
Box 908
Carthage, Texas
or
Elvin Ross
Secretary of Cattlemen's Assn.
Carthage, Texas

THE LULING FOUNDATION

Luling, Texas

I. ELIGIBILITY FOR ENTRY

A. Only bull calves will be tested.
B. Bull calves will be accepted if of known parentage (breed) and age. (Within 30 days.)

II. DATES

Application mailed—Sept. 10, 1959
Cattle delivered—Oct. 1-2, 1959
Initial weights—Oct. 14-15, 1959
Final weights—Mar. 2-3, 1960
Field day—Mar. 3, 1960
Birth dates accepted—Oct. 1, 1958 to April 15, 1959

III. FEEDING

Feeding will be under the supervision of The Luling Foundation. This feed test will be conducted on improved pasture, supplemented with about 7 pounds of cracked sorghum

grain. Good sorghum silage and cottonseed hulls will be fed free choice. Cottonseed meal will be fed for additional protein.

IV. COSTS

Breeders will pay \$75 for feed, pasturage, labor and pen space. Each cooperating breeder will transmit with his application \$25 for each animal, to apply on feed costs. An additional \$50 deposit per animal will be required when the animals are delivered. If a bull is removed for veterinary reasons, the unused feed deposit will be refunded.

Further information on this gain test can be obtained from:

Walter W. Cardwell, Sr., Manager
The Luling Foundation
Luling, Texas

HOUSTON COUNTY BEEF PRODUCERS ASSOCIATION

Crockett, Texas

I. ELIGIBILITY FOR ENTRY

A. Bulls will be accepted if registered or certified or if of recognized crossbreeds, such as Braford or Brangus.

B. Breeders are urged to use adjusted weaning weights (205 days) as a guide in selecting animals for test. Local county agents can assist in determining adjusted weaning weights.

II. DATES

Application mailed—August 10, 1959

Cattle delivered—August 20, 1959

Initial weights—Sept. 3-4, 1959

Final weights—Jan. 21-22, 1960

Field day—Jan. 23, 1960

Sale—January 23, 1960

Birth dates accepted—August 3, 1958 to March 6, 1959

III. FEEDING

Feeding will be under the supervision of the feeding committee. A growing ration of approximately 65 percent roughage and 35 percent concentrates will be used. Feeding program will be conducted at the Crockett Livestock Auction Barn.

IV. COSTS

Feed and feeding costs are expected to be approximately \$110 per animal. Each cooperat-

ing breeder will transmit with his application \$55 for each animal to apply on feeding cost. An additional \$55 deposit per animal will be required when the animals are delivered to testing facility. Costs will be kept at a minimum. All monies above cost will be refunded. If total cost is above \$110 per animal, the additional amount will be assessed at the end of the test.

V. SALE

A sale of performance-tested animals will be held at the conclusion of the test. There will be a \$15 sale fee for each animal sold to pay the costs of advertising. Animals will be screened before the sale and the lowest gaining animals will be disqualified for sale through the auction. They may be sold at private treaty.

Further information about this gain test may be obtained from:

Leo Knox

*Houston County Beef Producers Assn.
Crockett, Texas*

or

Phillip S. Nix

*County Agricultural Agent
Crockett, Texas*

FORT WORTH SELECTED BULL FEEDING TEST

Aledo Feed Lots, Inc.

Aledo, Texas

I. ELIGIBILITY FOR ENTRY

Eligible bulls must be registered in their respective breed associations—Angus, Hereford or Shorthorn.

II. DATES

Application mailed—Aug. 10, 1959

Cattle delivered—Aug. 21, 1959

Initial weights—Sept. 3-4, 1959

Final weights—Jan. 21-22, 1960

Field day—Jan. 23, 1960

Birth dates accepted—Sept. 1, 1958 to Dec. 31, 1958

III. FEEDING

Eight to 12 young bulls will be fed in each pen. A high concentrate ration will be formulated by the feed committee, according to the purpose for which these young bulls are being fed.

IV. COSTS

The estimated cost is \$120 per head. This includes feed, care, pen space, shade and office expense. Breeders will deposit \$40 per bull with the application for entry in the test. An additional \$40 per head will be due when the bulls are delivered at Aledo and \$40 will be due October 15. Charges or refunds will be made at the end of the test to adjust to the actual cost.

Further information about this gain test can be obtained from:

W. A. (Bill) King, Manager

Agriculture Department

Fort Worth Chamber of Commerce

700 Throckmorton Street

Fort Worth, Texas

or

*The Secretary of the
State Breed Association*

WEBB COUNTY BEEF CATTLE IMPROVEMENT ASSOCIATION SOUTH TEXAS SANTA GERTRUDIS BREEDERS ASSOCIATION

Laredo, Texas

I. ELIGIBILITY FOR ENTRY

Eligible bulls must be registered or subject to classification or registry in their respective breed associations.

Heifers will be fed and should be delivered 4 weeks later than the bulls. These heifers must be between 6 and 18 months of age.

II. DATES

	SPRING TEST	FALL TEST
Cattle delivered—	Oct. 31 and Nov. 1, 1959	April 11-12, 1960
Initial weights—	Nov. 14-15, 1959	April 25-26, 1960
Final weights—	April 2-3, 1960	Sept. 12-13, 1960
Field day—	April 3, 1960	Sept. 13, 1960
Birth dates accepted	May 15, 1958 May 15, 1959	Oct. 26, 1958 Oct. 26, 1959

III. FEEDING

The cattle will be fed in groups of approximately 25. Each group will have cattle of approximately the same size.

A growing ration will be selected by the executive committee, according to the purpose for which the young bulls are being fed.

IV. COSTS

The charges are subject to change, but it is estimated that \$100 will be required for feeding each bull and \$75 for each heifer. This charge includes feed, care, pen space, shade and office expense. Breeders will deposit \$25 per bull with application for entry in test. The additional money will be due when the bulls are delivered to the test.

Further information can be obtained from the following:

J. B. Talcott
County Agricultural Agent
Laredo, Texas

or
J. T. Maltsberger
Cotulla, Texas

GAIN TEST CONDUCTED BY YOU ON YOUR FARM

*(Should be in cooperation with your county agricultural agent
if Performance Registry International certificates are desired.)*

.....Bull Feeding Test

.....
(your name)

.....
(your home town)

I. ELIGIBILITY FOR ENTRY

A. You can test all of the bulls you have produced.

B. The young bull you have purchased to be used on your own herd.

II. ANIMAL HEALTH

Use the health requirements you have established for your herd.

III. DATES

Calves should be 6 to 13 months of age when test begins.

IV. RATION

A. Use the ration you normally use if it will make rapid gains on young cattle.

B. Use ration that varies from 30 to 60 percent concentrate and the remainder roughage.

C. Tests can be conducted on pasture or by limited grain feeding on pasture.

V. COSTS

The cost will have to be calculated for your own farm or ranch. Many breeders already feed an acceptable ration to young bulls for a long enough period (154 days) to conduct a gain test if weights were taken.

Further information about this gain test can be obtained from your county agricultural agent.

GREEN VALLEY CATTLE COMPANY

San Marcos, Texas

I. ELIGIBILITY FOR ENTRY

Bulls and heifers will be accepted for an official gain test.

II. DATES

Official gain tests will be conducted on young cattle that are 5½ to 12½ months of age when received. Initial weights, taken 14 days later, will officially start the test. Final weights, taken 140 days later, will conclude the test. Cattle will be accepted anytime during the year.

III. FEEDING

The animals will be fed a ration consisting of 60 percent rolled maize, 10 percent Steer Fattena, 20 percent cottonseed hulls and 10 percent molasses. Salt and meal will be fed free choice.

IV. COSTS

The costs will be 23¢ per pound gain plus 10¢ per day per animal for yardage, handling and administration. Fifty cents per day per animal will be charged while the animals are on starter feed. The owner will be billed the first of each month for 44½¢ per day per head and the difference will be reconciled at the end of the test period or sale.

V. SALE

Special sales will be conducted from time to time as enough cattle are entered to justify.

Further information on this gain test can be obtained from:

J. D. Cummings
Green Valley Cattle Company
San Marcos, Texas

PANTECH FARMS

Texas Technological College

Panhandle, Texas

I. ELIGIBILITY FOR ENTRY

A. Only bull calves eligible to be registered in their respective breed associations will be tested.

B. Two or more steers must be fed to high good grade and official carcass data obtained before a sire will be tested more than three times, beginning with the 1960-61 test. Grade steers will be accepted, but all steers must have correct birth dates, to qualify.

C. To assure that bulls entering the test are reasonably thrifty, they must weigh at least 1.6 pounds per day of age.

D. All bull calves must be weighed in the presence of an official Performance Registry International supervisor (county agricultural agent) at not less than 160 days of age and not more than 250 days of age. Weights must be recorded on official P.R.I. Form 2 and signed by supervisor and breeder.

E. If a breeder does not wean his bull calves when he gets the 205-day adjusted weights, he must have actual weaning weights when the test bulls are taken from their dams.

F. The following certificates and form *must* be delivered with the bulls:

1. Breed registration certificates showing co-operator as present owner.

2. Breeder's copy of Performance Registry International Weaning Weight Form 2. (worksheet)

G. Breeders must furnish P.R.I. weaning weight certificates at the time of delivery or sale entry date.

II. DATES

Application mailed—Sept. 1, 1959

Cattle delivered—Oct. 12, 1959

Field day—Mar. 24, 1960

Sale—Mar. 24, 1960

Birth dates accepted—Sept. 1, 1958 to Feb. 28, 1959

III. FEEDING

A separate pen will be used for each sire group and the groups will be fed a growing ration consisting of cottonseed meal, ground sorghum grain, chopped alfalfa hay, cottonseed hulls and sorghum bundles, if available.

IV. COSTS

A. Breeders will pay for the feed consumed by each sire group, plus an additional \$35 per animal service charge. Each cooperating

breeder will transmit with his application \$25 for each animal, to apply on feed cost. An additional \$85 deposit per animal will be required when the animals are delivered to Pan-Tech Farms. If feed and feeding costs are less than \$110 per head, a refund will be made. If more than \$110 per head is required for feed and feeding cost, the cooperator will be billed for the additional amount at the completion of the test.

B. Cooperators will be billed for membership in the Texas Beef Cattle Improvement Association and for Performance Registry International certificates secured.

TEXAS AGRICULTURAL EXPERIMENT STATION

Substation No. 9, Balmorhea, Texas

I. ELIGIBILITY FOR ENTRY

A. Bull calves must be eligible for registry in one of the recognized breed associations or sired by a bull that was previously on test and had an above-average gain.

B. Breeders who enter bulls must enter three steers which are half brothers to the bulls. The steers may be from commercial cows.

Exception—Breeders who have purchased bull calves for their own use and want a gain test on them may enter them without the half brothers.

C. Calves must be dropped between October 1, 1958 and March 30, 1959. Exact birth dates must be supplied.

D. All calves must be weighed between 160 and 250 days of age, so that they may be adjusted to 205 days. Weights must be recorded on a form provided by the Station and certified by a representative of the Extension Service or Experiment Station.

E. The exact weaning date will be required and if weaned after 205 days of age, a weight taken when actually weaned will be required.

F. To assure that bulls entering are thrifty, they must weigh not less than 1.7 pounds per day of age.

G. Since each breeder's cattle are kept in separate pens, they may be tested for brucellosis and tuberculosis after delivery to the station.

V. ANNUAL SALE

The PanTech Tested Bull Sale Association will hold its annual sale March 24, 1960.

Further information about this gain test and sale may be obtained from:

J. P. Smith

PanTech Farms

Route 2

Panhandle, Texas

or

George F. Ellis, Jr.

Asst. Animal Husbandman

Texas Agricultural Experiment Station

Bushland, Texas

II. DATES

Cattle delivered—Sept. 18-19, 1959

Initial weights—Oct. 5-6, 1959

Final weights—Feb. 22-23, 1960

Field day—Feb. 27, 1960

Birth dates accepted—Oct. 1, 1958 to Mar. 30, 1959

III. FEEDING

Sire groups of three or more will be fed separately insofar as possible. There will be approximately 22 pens available for bulls and if more than 22 sire groups are entered it will be necessary to feed those of smaller groups together. The bulls will be fed a ration which is 50 percent concentrate and 50 percent roughage.

Steers will be fed 200 to 220 days. Their ration will be the same as for the bulls during the first 100 to 120 days but the concentrate will be increased to 65 percent during the last 90 or 100 days.

IV. COSTS

The feeding costs will be \$110 for bulls and \$120 for steers. Each cooperator will make full payment at the time the cattle are brought to the station or before.

Further information about this gain test may be obtained from:

A. A. Melton

Texas Agricultural Experiment Station

Substation No. 9

Balmorhea, Texas

TEXAS AGRICULTURAL EXPERIMENT STATION

Substation No. 23, McGregor, Texas

I. ELIGIBILITY FOR ENTRY

A. Bulls and heifers will be accepted if they are of known parentage of a recognized breed and birth dates are known. Crossbred bulls and steers will be accepted if space is available.

B. Weaning weights must be known and submitted on a final application form along with date of weighing. Your local county agent can assist you. Weight must be recorded between 5 and 8 months of age (160 to 250 days). Weaning weights should be obtained and adjusted according to recommendations of the Texas Agricultural Extension Service or the rules of the Performance Registry International. Weaning weight should be an important consideration in selecting breeding stock and especially in evaluating dams. Only those calves with satisfactory weaning weights should be entered in the gain test.

II. DATES

	FIRST TEST	SECOND TEST
Application mailed—	Sept. 1, 1959	Jan. 1, 1960
Cattle delivered—	Sept. 17, 18 and 21, 1959	Jan. 14, 15 or 18, 1960
Initial weight—	Oct. 6-7, 1959	Feb. 2-3, 1960
Final weight—	Feb. 23-24, 1960	June 21-22, 1960
Field day—	Mar. 3, 1960	None
Sale—	Mar. 3, 1960	None
Birth dates accepted	Oct. 1, 1958 Feb. 28, 1959	Feb. 1, 1959 June 30, 1959

III. FEEDING

All animals will be fed in groups of about 25. The ration will consist of 30 percent sorghum grain, 10 percent oats, 10 percent cottonseed meal, 50 percent grass or sorghum hay, stabilized vitamin A and aureomycin, added during adjustment period. Bonemeal, salt and water will be available at all times. All feed will go through a hammer mill so that the mixture will blend well for self-feeding.

IV. COSTS

Feeding costs will be \$110 per animal. Each cooperating breeder will make full payment before or at the time the cattle are brought to the station.

V. SALE

An auction sale of first-test cattle will follow immediately after a short field day program March 3, 1960. The cattle will be inspected in the morning and a barbeque dinner will be held at noon. Bulls and heifers which meet P.R.I. feedlot qualifications or are above average in gain performance of their breed or sex groups are eligible for entry in the sale. Further information about this gain test may be obtained from:

Walter E. Kruse
Texas Agricultural Experiment Station
Substation No. 23
McGregor, Texas

APPLICATION FORM

TO:

.....
.....

This preliminary application made the day of, 1959,

by of

Post office

..... for entry of

County (ranch located)

Number

.....bull calves.

Breed

I will complete the final application form and pay the feeding cost deposit as soon as the final application forms are received. If, for any reason, final application is not accepted, the feed cost deposit will be refunded to me.

Mailing address Owner

TEXAS GAIN TESTS FOR 1959-60

	Panola County Cattlemen's Assn. Carthage	The Luling Foundation Luling	Houston County Beef Producers Assn. Crockett	Fort Worth Selected Bull Feeding Test Agr. Com- mittee Fort Worth C. of C.
Dates				
Application mailed	Sept. 1, '59	Sept. 10, '59	Aug. 10, '59	Aug. 10, '59
Cattle delivered	Sept. 24, '59	Oct. 1, 2, '59	Aug. 20, '59	Aug. 21, '59
Initial weights	Oct. 8, 9, '59	Oct. 14, 15, '59	Sept. 3, 4, '59	Sept. 3, 4, '59
Final weights	Feb. 24, 25, '60	Mar. 2, 3, '60	Jan. 21, 22, '60	Jan. 21, 22, '60
Field day	Feb. 27, '60	Mar. 3, '60	Jan. 23, '60	Jan. 23, '60
Birth dates accepted	Oct. 1, '58 Mar. 31, '59	Oct. 1, '58 Apr. 15, '59	Aug. 3, '58 Mar. 6, '59	Sept. 1, '58 Dec. 31, '58
Number accepted per breeder	1 to 5	1 to 10	1 to 10	1 to 10
Weaning weight required	-----	-----	Requested	-----
Ration				
Concentrates	50%	7 lb. milo per day on pasture	35%	60%
Roughage	50%		65%	40%
Cost (Approximately)	\$110	\$75	\$110	\$120
Testing bulls for fertility	-----	-----	-----	Optional
Sale				
Date	Feb. 27, '60	-----	Jan. 23, '60	-----
Cost	\$10	-----	\$15	-----

TEXAS GAIN TESTS FOR 1959-60

	Webb County Beef Cattle Improve- ment Assn. Fall test Laredo	Webb County Beef Cattle Improve- ment Assn. Spring test Laredo	Your farm test	Green Valley Cattle Co. San Marcos
Dates				
Application mailed	-----	-----		-----
Cattle delivered	Oct. 31-Nov. 1, '59	Apr. 11, 12, '60		Anytime
Initial weights	Nov. 14, 15, '59	Apr. 25, 26, '60	Official gain test	14 days later
Final weights	Apr. 2, 3, '60	Sept. 12, 13, '60	can be conducted	140 days after
Field day	Apr. 3, '60	Sept. 13, '60	on your farm or	initial weights
Birth dates accepted	May 15, '58 May 15, '59	Oct. 26, '58 Oct. 26, '59	meets the stand- ards set out on	5½-12½ months
Number accepted per breeder	1 or more	1 or more	page 1. The date	When delivered
Weaning weight required	-----	-----	the tests start,	1 or more
Ration			number of ani- mals, ration and	-----
Concentrates	35%	35%	animal health can	70%
Roughage	65%	65%	be set up to fit	30%
Costs (Approximate)	\$100	\$100	your particular	\$100
Testing bulls for fertility	-----	-----	operation.	-----
Sale				
Date	-----	-----		Probably
Cost	-----	-----		-----

TEXAS GAIN TESTS FOR 1959-60

	Pan Tech Farms Texas Tech College Panhandle	Substation No. 9 TAES—Balmorhea	Substation No. 23 TAES—McGregor First test	Substation No. 23 TAES—McGregor Second test
Dates				
Application mailed	Sept. 1, '59	Sept. 1, '59	Jan. 1, '60
Cattle delivered	Oct. 12, '59	Sept. 18, 19, '59	Sept. 17, 18, 21, '59	Jan. 14, 15 or 18, '60
Initial weights	Oct. 5, 6, '59	Oct. 6, 7, '59	Feb. 2, 3, '60
Final weights	Feb. 22, 23, '60	Feb. 23, 24, '60	June 21, 22, '60
Field day	Mar. 24, '60	Feb. 27, '60	Mar. 3, '60	None
Birth dates accepted	Sept. 1, '58 Feb. 28, '59	Oct. 1, '58 Mar. 30, '59	Oct. 1, '58 Feb. 28, '59	Feb. 1, to June 30, '59
Number accepted per breeder	3 to 8	1 to 20	1 to 20	1 to 12
Weaning weight required	Yes	Yes	Yes	Yes
Ration				
Concentrates	35%	50%	50%	50%
Roughage	65%	50%	50%	50%
Costs (Approximate)	\$110	\$110	\$110	\$110
Testing bulls for fertility	Yes	Yes	Yes
Sale				
Date	Mar. 24, '60	Mar. 3, '60
Cost	\$20	None