

Agustín Díez-Castillo – C. Michael Barton – Neus La Roca-Cervigón – Joan Bernabeu-Aubán

Landscape Socioecology in the Serpis Valley (10,000–4000 BP)

Abstract: In this paper we discuss our approach to landscape modeling for the Holocene middle Serpis drainage system (central Mediterranean Coast of the Iberian Peninsula). The archaeological sequence of these valleys is marked by the initial appearance of the Neolithic package around 5700 BC. We examine how landscapes respond to the agricultural way of life, in both the short and the long term. Concepts like change, adaptation and also resilience provide conceptual frameworks to better understand the way in which humans interact with their surroundings. They also help to explain how phenomena like the initial introduction of simple cereal horticulture, or subsequent introduction of plow cultivation (BERNABEU AUBÁN 1995) can trigger processes with sometimes unpredictable consequences in Mediterranean ecosystems. These consequences are not inherently disastrous, but the interactions between ecosystems and humans using resources are complex and often display non-linear outcomes of human decisions. We use the concept of socioecology to characterize these closely coupled human and natural systems as these should be an important focus of interest for archaeology.

Introduction

In Spain, it is traditional for archaeologists to consider prehistory as a subfield of history that studies the past of the human groups before the existence of written documents. It is this absence of written documents that makes necessary the need for a series of special techniques and methods that constitute what is known as the archaeological method. In this sense, the archaeological method includes basic principles that converge with those of geology but which are made more complex by human contributions (intentional and unintentional) to the formation of the archaeological record. In other academic traditions, however, prehistory does not exist as a subfield of history, and archaeology is that part of anthropology that studies the remote human past. Perhaps the most obvious consequence of these differences is that anthropological archaeology has often focused on the study of human behavior at different points in time, whereas prehistory has focused on how human groups change through time.

There has been some recent convergence of both archaeological traditions in Spain, with some of the basic concepts of history, such as the Braudelian *longue durée*, attracting the attention of anthropologists and concepts common in anthropology, such as *habitus* (of Bourdieu) or agency (BOURDIEU 1990; BRAUDEL 1980; HEGMON 2003), coming into use among Spanish prehistorians. An important common ground to both approaches to the human

past is the recognition of the importance of space to human systems and their changes through time. New computer techniques for studying the combined spatial and temporal dynamics of the past offer archaeologists of both traditions the opportunity to explore new ways to study human socioecosystems (BARTON et al. 1999; IDEM 2004; BERNABEU AUBÁN et al. 1999; IDEM 2006; KVAMME 1999). In the following pages, we briefly describe examples of our approach to an always-difficult aspect of the past, the reconstruction of landscapes through a dynamic process where ecosystems and humans interact and change together through time in a non-linear way.

This research is part of the Mediterranean Landscape Dynamics project (Medland) – a multidisciplinary effort working to study the dynamics of landuse-landscape-socioecosystem interactions. As the physical archaeological record is fragmentary and static, the Medland project aims to create a modeling laboratory where the social and ecological consequences of alternative land use practices can be recreated and tested against the archaeological record: – not only in the Iberian Peninsula but also elsewhere in the Mediterranean (BARTON et al. 2006). A primary goal for this laboratory of the past is to gain a better insight into the recursive interactions of humans and landscapes at multiple temporal and spatial scales. Studies, like the ones summarized here are providing empirical data to validate and fine tune these models of human socioecology.

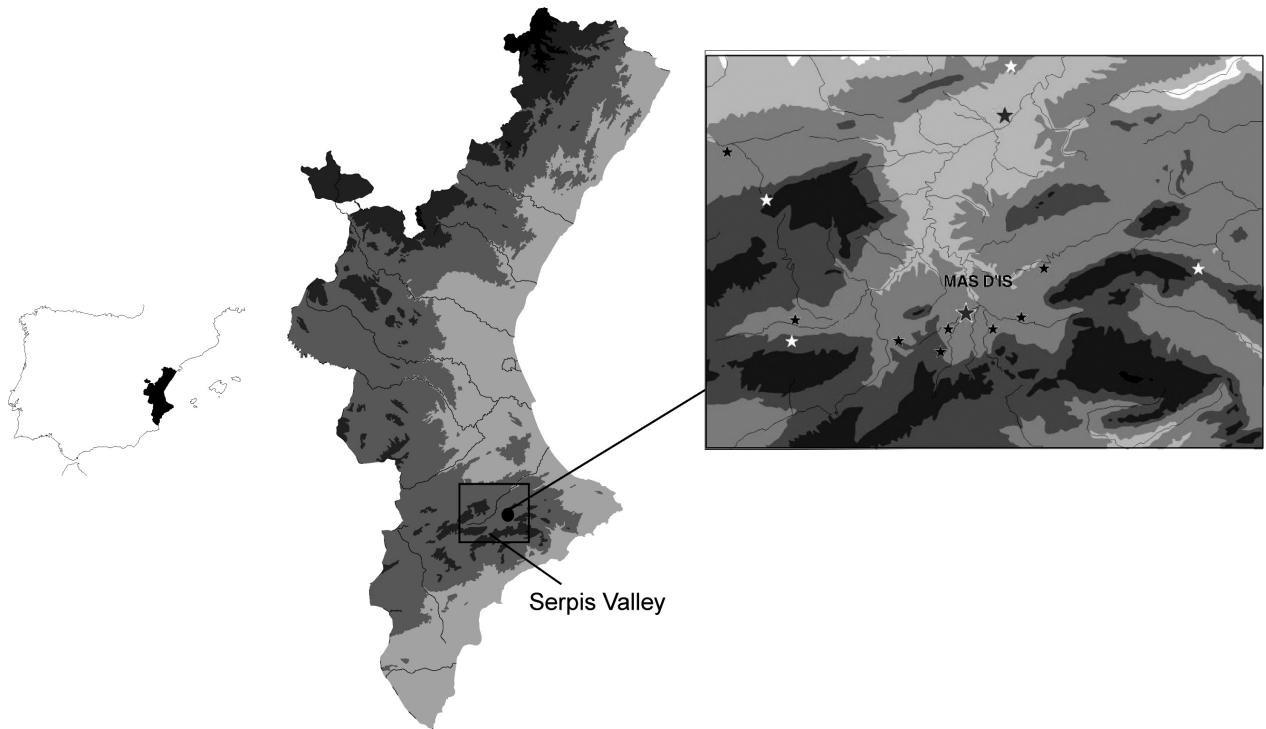


Fig. 1. Location of the Alcoy valley in the Iberian Peninsula.

Geographical Setting

Location

The Alcoy valley (or Valles de Alcoi) is the local name for the upper and middle Río Serpis (also known as the Riu d'Alcoi) basin above the Beniarrés dam (Fig. 1). The total area of the basin is 736.85 km², with 460.77 km² in the upper and middle reaches above the dam. The Río Serpis is a typical Mediterranean river, with a comparatively short, steep course. Its total length is only 35.3 km. Most of its water comes from rainfall, but some karstic groundwater feeds the main river year-round making it a permanent stream – albeit a meager one during the summer. The Serpis drains towards the NE following the structure of the Valencian Betic system. Although in a montane setting, the Serpis valley is still near the coast. It lies 28 km to the south-southeast at Baeza Cove (next to Vila Joiosa), 53 km to the east at Moraira, and 40 km to the north-northeast at Gandía. Natural routes from the valley to the coast follow the course of the Río Serpis through the l'Orxa-Vilallonga gorge to the northeast, and the dry Vall de Gallinera and the Vall de Fageca-Famorca to the east. More difficult routes follow the Coll de Rates and Torre de les Maçanes to the south (Fig. 1).

Physiographic Setting

At the northeastern extent of the Betic System, the mountains surrounding the Alcoy valley average around 1000 m AMSL, with some summits nearing 1400 m. The main valley is a structural basin, where former calcareous anticlines overturned towards the north to become a horst that surrounds like an amphitheatre several glacis of about 550–700 m in the upper part to 300–400 m in the valley bottom, and forms a more faulted structure to the south (MARCO MOLINA 1990). The Alcoy and adjacent valleys are filled with mudstones and have been transformed by extensional tectonics since Pliocene times (LA ROCA CERVIGÓN 1991; MEZCUA / MARTINEZ SOLARES 1983). The deepest sections are the Alcoi graben and a zone in the center of the Serpis valley, located between the Mariola, Benicadell and Almudaina sierras (Fig. 2).

Climate

This mountainous region surrounding the Alcoy valley is a humid island in the Valencian pre-coastal semi-arid climate, with higher precipitation and lower evapotranspiration than other areas of Alicante Province (ROSSELLÓ VERGER 1965, 5). The *Cabo de la Nau*, to east of Alcoy, marks an important cli-

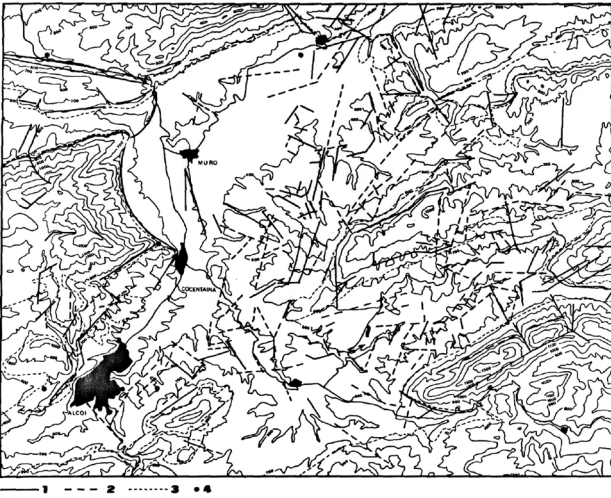


Fig. 2. Alcoy valley tectonics: (1) fault, (2) possible fault, (3) boundary between limestone and marls, (4) epicenters.

matic divide (GIL OLCINA 1994; MARTINEZ IBARRA 2006; VAN BEEK 2002) between a northern coastal zone open to the dominant Mediterranean flows, and a southern zone of rain shadow. LAUTENSACH (1964, 629) describes the area around Alcoy as sub-humid or semihumid, with three to four arid months instead of the five to six recorded on the coast. Annual average precipitation is usually over 500 mm, reaching more than 900 mm in the highest weather stations (MARTINEZ IBARRA 2006, 70). The annual period of low rainfall generally lasts from June to October, with a maximum in August-September – although occasionally the dry period begins as early as in April, requiring the use of supplementary groundwater for agriculture (LOPEZ GÓMEZ 1978, 114). KUNOW (1966) calculated a pluviol gradient for

this area of about 60 mm per 100 m that is useful for environmental modeling (Fig. 3).

Prehistoric Socioecology

Archaeological Evidence

The distinctive climate along a climatic divide, topographic variation, and the location between the Mediterranean coast and interior *Meseta* has produced a diversity of ecological niches within this region that favored human presence in Late Prehistory (as well as considerably earlier). Archaeological investigations, beginning at the end of 19th century, have identified an important number of human sites dated within the Holocene. More recently, extensive surveys and excavations of Neolithic villages have provided more detailed information about human settlement in the Alcoy valley and adjacent Albalida valley (BARTON et al. 1999; IDEM 2002; IDEM 2004; BERNABEU AUBÁN et al. 1994; IDEM 1999; IDEM 2003; IDEM 2006; BERNABEU AUBÁN / KÖHLER 2005; GARCIA PUCHOL 2005; GARCÍA PUCHOL / AURA TORTOSA 2006; GARCÍA PUCHOL et al. 2001). Despite inherent limitations of the archaeological record, the comparatively rich information available for this region has allowed us to begin to model its Holocene socioecology.

Chronology

The excavation of stratified assemblages from a number of Holocene sites (Fig. 4) occupied by pre-Neolithic hunter/gatherers (e.g. Regadiuet, Falguera, Tossal de la Roca, and possibly Punxó) and Neo-

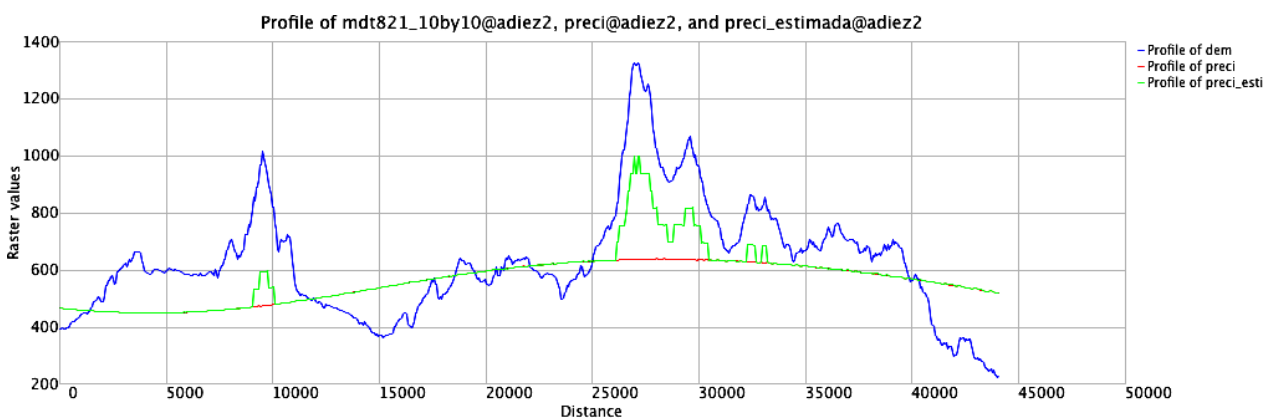


Fig. 3. Profiles of a Digital Elevation Model for the Alcoy region (upper), precipitation (bottom) and Kunow's gradient (middle).

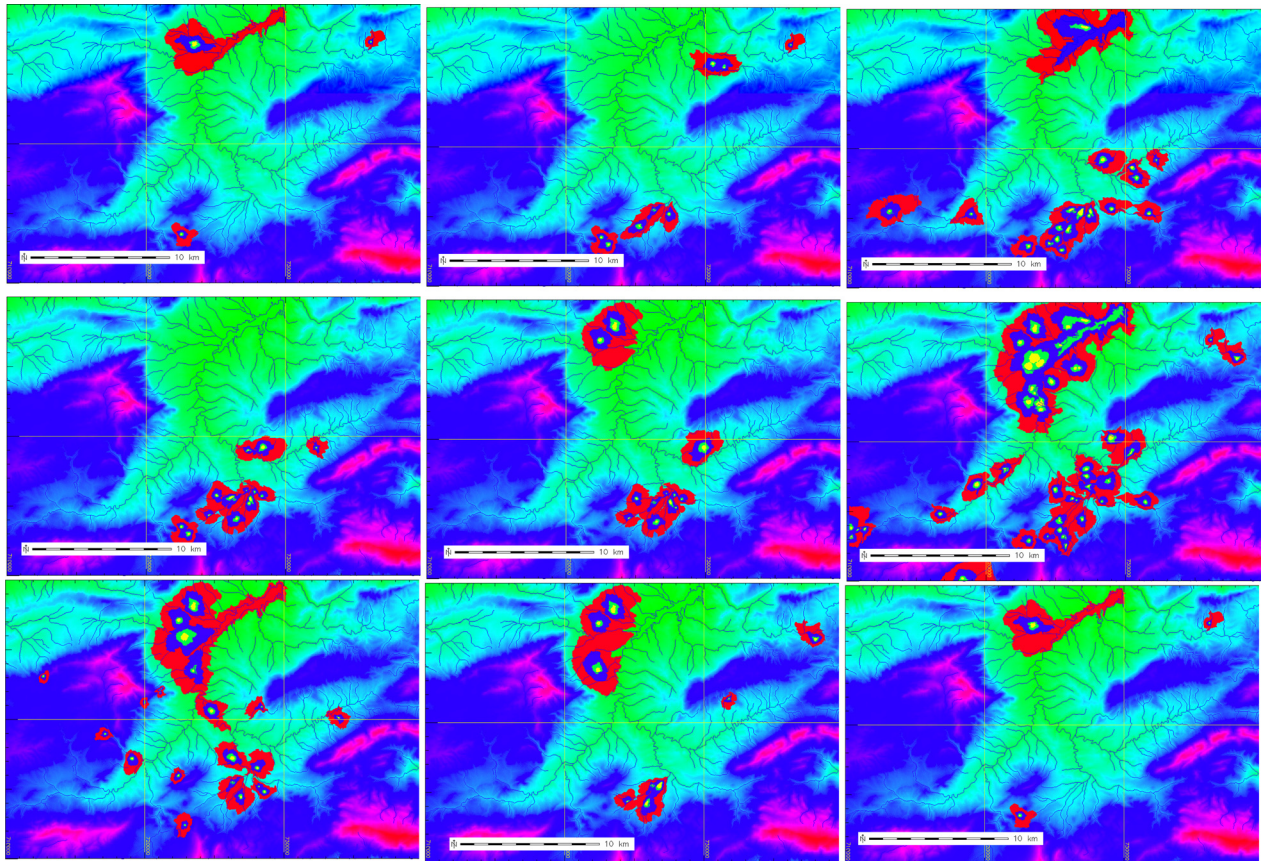


Fig. 4. Site catchment areas (walking times of 12, 24, 60, and 120 min from each site are shown as shaded bands), from left to right and from top to bottom (Late Mesolithic, Early Neolithic – NIA, NIB and NIC –, Late Neolithic – NIIA and NIIB –, Bell Beaker, Bronze Age and Late Mesolithic).

lithic farmers (e.g. Cova l'Or, Mas D'Is, Jovades, Colata, Punxó) have allowed us to build a solid chronological framework, that combines ceramic stylistic criteria with calibrated radiocarbon dates. The arrival of the first agriculturalists to the region (Neolithic I) is characterized by a Cardial ware ceramics, stylistically related to the impressed-ware ceramic tradition of the western Mediterranean. Later phases (Neolithic II) are characterized by more open vessels and a tendency towards marginalization of decoration. An extensive series of C-14 dates (mostly AMS) on short-life materials (to avoid old wood effects) suggests possible discontinuities in human activities, such as a hiatus in the two centuries before the appearance of the earliest farmers, and another between ca. 4200 and ca. 3900 BC (BERNABEU AUBÁN et al. 2006, Fig. 8.2). Earlier phases of the Neolithic have proven more amenable to detailed chronological subdivision than recent ones as a consequence of better radiocarbon sampling and due to problems related to the calibration curve itself. Ceramic phases of around 150–300 years can be

distinguished for the Neolithic I, while only phases of 600 and 1100 years can be distinguished for the Neolithic II.

Site Catchment Analysis

Identification of resource catchments around prehistoric sites is an important aid to analyzing changes in socioecology through time. While there have been several approaches to site catchment generation proposed since GIS was introduced into archaeology, here we conceptually follow the classic proposals of Gilman and Thornes (GILMAN / THORNES 1985) for the Southeast of the Iberian Peninsula, further developed by J. Vicent. However, instead of simple circles used in the earlier work, we calculate catchment areas from a cost-distance friction surface map, derived from topographic slope and transformed into minutes of walking time from each site (Fig. 4). These catchment areas can be used to analyze resources available within different walking times when combined with paleoenvironmen-

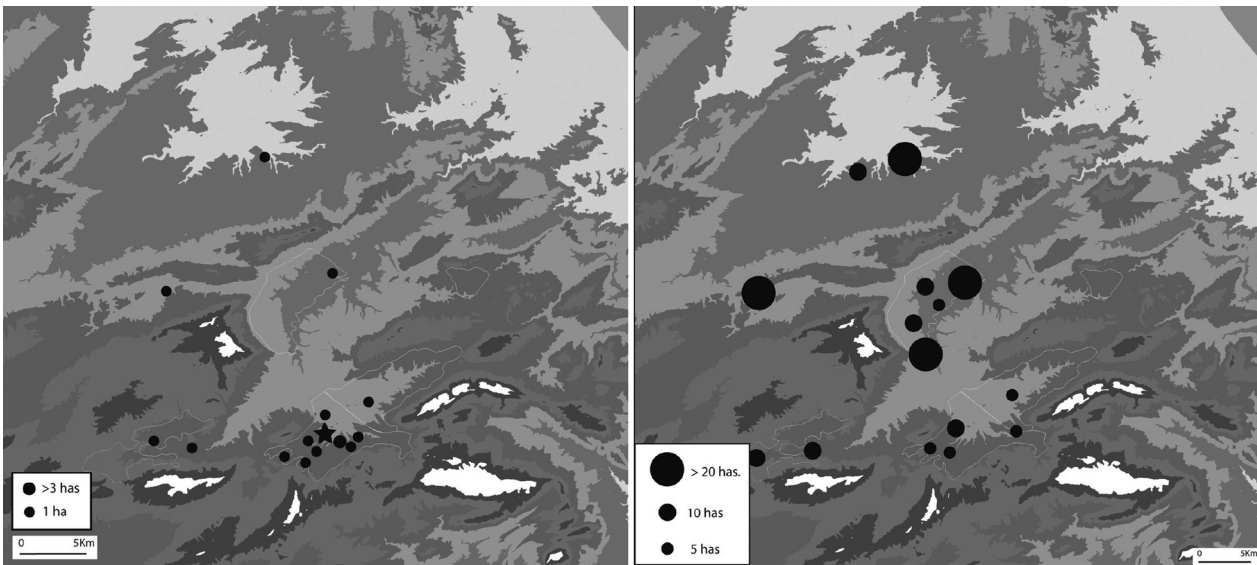


Fig. 5. Early Neolithic sites (left) and Late Neolithic sites.

tal data from other sources (e.g. BADAL 1990; DUPRÉ 1994).

Landscape Modeling and Settlement Dynamics

Prior GIS-based research has documented dynamics in land use and settlement intensity through time in this region (BARTON et al. 1999; IDEM 2002; IDEM 2004; BERNABEU AUBÁN et al. 1994; IDEM 1999; IDEM 2003; IDEM 2006). We noted additional evidence for occupation cycles for the Neolithic that appear to show sites of approximately the same size in the Early Neolithic, with greater diversity – and in some cases considerable increases – in the size of the sites in the later Neolithic. The settlement patterns now visible in the archaeological record are the cumulative result of long-term human organizational dynamics at regional scales. The Early Neolithic pattern seems to represent the establishment and abandonment of equivalent, small settlements at different locales over time. The later Neolithic pattern, on the other hand, shows a different dynamic that includes both the establishment of small settlements and the growth of small settlements into larger ones.

These different patterns appear to represent long cycles of occupation and the persistence throughout time of certain socioecological relationships, which are abruptly altered at points in time. In the terminology of Complexity Theory, these different cumulative settlement patterns represent the socioecological fitness landscapes of different human niches. For simple hoe-based agriculture, settlement organization

tends toward the repetition of dispersed, small, identical organizational units. For the more specialized and diverse agricultural systems of the Late Neolithic, with more intensive plow-cultivation and extensive herding, some settlements become differentially strong attractors, and grow much larger than others (McCLURE / JOCHIM / BARTON 2006). These centers of attraction may initially form because certain settlements have slight differences in productive potential. The growth of these settlement locales can drive their increased strength as attractors of human settlement if they also become places with increased accumulation of wealth and prestige. We see this characterisation in some of the Late Neolithic communities (BERNABEU AUBÁN et al. 2006). Naturally, within each of these cycles of apparent dynamic stability, fluctuations also can occur, but these are less visible in the archaeological record.

Software Considerations

The Department of Prehistory of the University of Valencia in collaboration with other institutions (Technological and Computer Science Institute of the Polytechnic University of Valencia, Network of European Excellence EPOCH, Medland project at Arizona State University) has prioritized the use of GIS as an essential tool to manage archaeological data and carry out reconstructions of the past. A primary objective of this work is to build an Archaeological Information System, based on existing

open source tools. The research presented here was carried out using GRASS (<http://grass.itc.it/>) and gvSIG (<http://www.gvsig.gva.es/>). It exemplifies the capabilities of free GIS, which can equal or exceed those of commercial systems whose high costs often put them out of the reach of students and many researchers. We used GRASS for most of the raster calculations, because of its powerful tools for modeling past landscapes. We used gvSIG for other routines such as WMS server queries and visualization of georeferenced images.

Acknowledgements

This research was supported in part by grants from the National Science Foundation (BCS-0410269, BCS-0075292, BCS-0331583, BNS-9115209, and SBR-9904050), by the University of Valencia and Diputación de Valencia, by Arizona State University, and the Commission for the International Exchange of Scholars.

References

- BADAL 1990
E. BADAL, Aportaciones de la Antracología al estudio del paisaje vegetal y su evolución en el Cuaternario reciente en la costa mediterránea del País Valenciano y Andalucía 18.000 – 3.000 B.P. Ph.D. thesis (València 1990).
- BARTON et al. 1999
C. M. BARTON / J. BERNABEU AUBÁN / J. E. AURA TORTOSA / O. GARCÍA PUCHOL, Landscape dynamics and socio-economic change: an example from the Polop Alto valley. *American Antiquity* 64, 1999, 609–634.
- BARTON et al. 2002
C. M. BARTON / J. BERNABEU AUBÁN / J. E. AURA TORTOSA / O. GARCÍA / N. LA ROCA, Dynamic landscapes, artifact taphonomy, and landuse modeling in the western Mediterranean. *Geoarchaeology* 17,2, 2002, 155–190.
- BARTON et al. 2004
C. M. BARTON / J. BERNABEU AUBÁN / O. GARCÍA PUCHOL / S. SCHMICH / L. MOLINA BALAGUER, Long-term socioecology and contingent landscapes. *Journal of Archaeological Method and Theory* 11,3, 2004, 253–295.
- BARTON et al. 2006
M. BARTON / H. SARJOUGHIAN / S. FALCONER / H. MITASOVA / R. ARROWSMITH / P. FALL, Modeling Long-Term Landscape Dynamics and the Emergence of Intensification. In: *Proceedings of the 71st Annual Meeting of the Society for American Archaeology*, San Juan, Puerto Rico, 2006 (San Juan 2006) 1–35.
- VAN BEEK 2002
R. VAN BEEK, *Assessment of the influence of changes in land use and climate on landslide activity in a Mediterranean environment*. Netherlands Geographical Studies (Utrecht 2002).
- BERNABEU AUBÁN 1995
J. BERNABEU AUBÁN, *Origen y consolidación de las sociedades agrícolas. El País Valenciano entre el Neolítico y la Edad del Bronce*. In: *Actes de les Segones Jornades d'Arqueologia* (Valencia 1995) 37–60.
- BERNABEU AUBÁN / KÖHLER 2005
J. BERNABEU AUBÁN / T. OROZCO KÖHLER, Mas d'Is (Penàguila, Alicante): Un recinto monumental del VI milenio cal AC. In: P. ARIAS / R. ONTAÑÓN / C. GARCÍA-MONCÓ (eds.), *III Congreso sobre el Neolítico en la Península Ibérica* (Santander 2003) 485–495.
- BERNABEU AUBÁN et al. 1994
J. BERNABEU AUBÁN / J. L. PASCUAL / T. OROZCO / E. BADAL / M. P. FUMANAL / O. GARCÍA PUCHOL, Niuet (L'Alquería d'Asnar). Poblado del IIIr milenio a.C. *Recerques del Museu d'Alcoi* 3, 1994, 9–74.
- BERNABEU AUBÁN et al. 1999
J. BERNABEU AUBÁN / C. M. BARTON / O. GARCÍA / N. LA ROCA, Prospecciones sistemáticas en el valle del Alcoi (Alicante): primeros resultados. *Arqueología Espacial* 21, 1999, 29–64.
- BERNABEU AUBÁN et al. 2003
J. BERNABEU AUBÁN / T. OROZCO KÖHLER / A. DIEZ CASTILLO / M. GÓMEZ PUCHE, Mas d'Is (Penàguila, Alicante): aldeas y recintos monumentales del Neolítico Antiguo en el Valle del Serpis. *Trabajos de Prehistoria* 60,2, 2003, 39–59.
- BERNABEU AUBÁN et al. 2006
J. BERNABEU AUBÁN / L. MOLINA BALAGUER / A. DIEZ CASTILLO / T. OROZCO KÖHLER, Inequalities and power. Three millennia of Prehistory in the Spanish Mediterranean (5600–2000 cal BC) In: P. DÍAZ DEL RÍO / L. GARCÍA SANJUÁN (eds.), *Social inequalities in Iberian Late Prehistory* (Oxford 2006) 97–116.
- BOURDIEU 1990
P. BOURDIEU, *The Logic of Practice* (Stanford 1990).
- BRAUDEL 1980
F. BRAUDEL, *On history* (Chicago 1980).
- CORTEZA / RUBIO / GIMENO 1995
J. CORTEZA / J. L. RUBIO / E. GIMENO (eds.), *Catálogo de suelos de la Comunidad Valenciana* (Valencia 1995).
- DIEZ CASTILLO 1997
A. DIEZ CASTILLO, *Utilización de los recursos en la Marina y Montaña cantábricas: una prehistoria ecológica de los valles del Deva y el Nansa* (Gernika 1997).
- DIEZ CASTILLO / MARTÍNEZ BURGOS 2002
A. DIEZ CASTILLO / C. MARTÍNEZ BURGOS, *Sidgeipa: An Archaeological Information System*. 6. Workshop "Ar-

- chäologie und Computer", Wien, 5.–6. November 2001 (Vienna 2002).
- DUPRÉ 1994
M. DUPRÉ, Evolución paleoambiental a partir de datos paleobotánicos. In: Direcció General d'Urbanisme i Ordenació del Territori, Valencia, Atlas Climático de la Comunidad Valenciana (Valencia 1994) 20–21.
- GARCÍA PUCHOL 2005
O. GARCÍA PUCHOL, El Proceso de Neolitización en la Fachada mediterránea de la Península Ibérica. Tecnología y Tipología de la piedra tallada. BAR International Series 1430 (Oxford 2005).
- GARCÍA PUCHOL / AURA TORTOSA 2006
O. GARCÍA PUCHOL / J. E. AURA TORTOSA (eds.), El Abric de la Falguera (Alcoi, Alacant). 8.000 Años de Ocupación Humana en la Cabecera del Río Alcoi (Alcoi 2006).
- GARCÍA PUCHOL / BARTON / BERNABEU AUBÁN in press
O. GARCÍA PUCHOL / C. M. BARTON / J. BERNABEU AUBÁN, Aplicación de métodos de prospección geofísica en la detección de un gran foso del IV milenio cal ac en el yacimiento del Alt del Punxó (Muro de l'Alcoi, Alacant) (Madrid in press).
- GARCÍA PUCHOL et al. 2001
O. GARCÍA PUCHOL / C. M. BARTON / J. BERNABEU AUBÁN / J. E. AURA TORTOSA, Las ocupaciones prehistóricas del Barranc de l'Encantada (Beniarrés, Alacant): un primer balance de la intervención arqueológica en el área a través del análisis del registro lítico. *Recerques del Museu d'Alcoi* 10, 2001, 25–42.
- GARCÍA VÉLEZ / SOUBRIER GONZÁLEZ 1981
A. GARCÍA VÉLEZ / J. SOUBRIER GONZÁLEZ, Memoria del Mapa Geológico de España 1:50.000 (Játiva 1981) 14.
- GILMAN / THORNES 1985
A. GILMAN / J. B. THORNES, Land use and prehistory in south-east Spain (London 1985).
- GIL OLCINA 1994
A. GIL OLCINA, Los climas de las Tierras alicantinas meridionales. In: A. J. PÉREZ CUEVA (COORD.), Atlas Climático de la Comunidad Valenciana. *Territori* 4 (Valencia 1994) 140–141.
- HEGMON 2003
[M. HEGMON, Setting theoretical egos aside: issues and theory in North American archaeology. *American Antiquity* 68, 2003, 213–243.](#)
- KUNOW 1966
P. KUNOW, El clima de Valencia y Baleares (Valencia 1966).
- KVAMME 1999
K. L. KVAMME, Recent Directions and Developments in Geographical Information Systems. *Journal of Archaeological Research* 7, 1999, 153–201.
- LAUTENSACH 1964
H. LAUTENSACH, Geografía de España y Portugal (Barcelona 1964).
- LOPEZ GÓMEZ 1978
A. LÓPEZ GÓMEZ, El clima. In: A. LÓPEZ GÓMEZ / V. M. ROSSELLÓ VERGER (eds.), Geografía de la provincia de Alicante (Alicante 1978) 107–117.
- MARCO MOLINA 1990
J. A. MARCO MOLINA, Aitana. Análisis morfoestructural (Alicante 1990).
- MARTÍNEZ IBARRA 2006
E. MARTÍNEZ IBARRA, Tipos de tiempo en la provincia de Alicante. In: P. GIMENEZ / J. A. MARCO / E. MATARREDONA / A. PADILLA / A. SÁNCHEZ (COORD.), Geografía Física y Medio Ambiente, Guía de Campo de las XXI Jornadas de Geografía Física (Alacant 2006) 70.
- MCCLURE / JOCHIM / BARTON 2006
S. B. MCCLURE / M. A. JOCHIM / C. M. BARTON, Foraging Theory, Domestic Animals, and the Transition to Agriculture in Eastern Spain. In: D. KENNETT / B. WINTERHALDER (eds.), Foraging Theory and the Transition to Agriculture (Berkeley 2006) 197–216.
- MEZCUA / MARTÍNEZ SOLARES 1983
J. MEZCUA / J. M. MARTÍNEZ SOLARES, Sismicidad del área ibero-magrebí (Madrid 1983).
- MITASOVA / MITAS 1993
H. MITASOVA / L. MITAS, Interpolation by regularized spline with tension. *Mathematical Geology* 25, 1993, 641–669.
- PADILLA BLANCO 2006
A. PADILLA BLANCO, Valoración y percepción de dos espacios montañosos alicantinos: la colonia agrícola de la Sierra de Salinas y el Carrascal de la Font Roja. In: P. GIMENEZ / J. A. MARCO / E. MATARREDONA / A. PADILLA / A. SÁNCHEZ (COORD.), Geografía Física y Medio Ambiente, Guía de Campo de las XXI Jornadas de Geografía Física (Alacant 2006) 201–202.
- LA ROCA CERVIGÓN 1990
N. LA ROCA CERVIGÓN, Evolución de laderas en la montaña meridional valenciana. Unpublished Ph.D. thesis (València 1990).
- LA ROCA CERVIGÓN 1991
N. LA ROCA CERVIGÓN, La sismicidad en la mitad S del País Valenciano desde el punto de vista de los movimientos de masa. In: XII Congreso Nac. Geogr. (Valencia 1991) 179–186.
- ROSSELLÓ VERGER 1965
[V. M. ROSSELLÓ VERGER, Distribución de cultivos en la provincia de Alicante. *Cuadernos de Geografía* 2, 1965, 1–38.](#)

CAA 2007 – Layers of Perception
35th Conference on Computer Applications and
Quantitative Methods in Archaeology

RÖMISCH-GERMANISCHE KOMMISSION, FRANKFURT A. M.
EURASIEN-ABTEILUNG, BERLIN

des Deutschen Archäologischen Instituts

Kolloquien zur Vor- und Frühgeschichte
Band 10



Dr. Rudolf Habelt GmbH · Bonn 2008

GERMAN ARCHAEOLOGICAL INSTITUTE
Ortwin Dally

INTERDISCIPLINARY CENTRE FOR THE STUDY OF THE ANCIENT WORLD
FREE UNIVERSITY OF BERLIN
Friederike Fless

COLLECTION OF CLASSICAL ANTIQUITIES
NATIONAL MUSEUMS IN BERLIN
Andreas Scholl

COMPUTER APPLICATIONS AND QUANTITATIVE METHODS IN ARCHAEOLOGY
GERMAN CHAPTER
Irmela Herzog, Tim Kerig, Axel Posluschny

Layers of Perception

Proceedings of the 35th International Conference on Computer
Applications and Quantitative Methods in Archaeology (CAA)
Berlin, Germany, April 2-6, 2007

Edited by
Axel Posluschny, Karsten Lambers, Irmela Herzog



Dr. Rudolf Habelt GmbH · Bonn 2008

XX and 428 pages, 247 figures, 10 tables and 1 CD

*CAA 2007 was held under the auspices of
His Excellence Dr. Frank-Walter Steinmeier, German Minister of Foreign Affairs*

Cover design using the Greek bronze statue of the so called "Praying Boy";
Early Hellenistic original from around 300 B.C.; found in Rhodes; acquired by Friedrich II., King of Prussia, in 1747,
today on display in the Altes Museum, Berlin, Antikensammlung Sk 2 (image editing: Anja Neumann).

Bibliographische Information der Deutschen Bibliothek

Die Deutsche Bibliothek verzeichnet diese Publikation
in der Deutschen Nationalbibliografie; detaillierte bibliografische
Daten sind im Internet über <http://dnb.ddb.de> abrufbar

© 2008 by Römisch-Germanische Kommission des Deutschen Archäologischen Instituts
Frankfurt a. M.

Redaktion: A. Posluschny, K. Lambers, I. Herzog unter Mitarbeit von M. Eller und M. Helfert
Lektorat und Satz: Köpfe GmbH, Mannheim (Buch), Druckhaus „Thomas Müntzer“ GmbH (CD)

Einband: J. Denking

Druck: Prime Rate Kft. (Budapest)

gedruckt auf alterungsbeständigem Papier

ISBN 978-3-7749-3556-3

(The contents of the CD accompanying this volume will be made available at the virtual library Propylaeum
[www.propylaeum.de] about one year after the publication of this book.)

Contents

Preface	XVII
01 RECORDING AND ANALYSIS OF FIELD DATA	1
John Pouncett – Gary Lock Closest Facility Analysis: Integration of Geophysical and Test-Pitting Data from the South Cadbury Environs Project	1
Otis Crandell – Angelica Bălos Palaeotopography – The Use of GIS Software with Data Derived from Resistivity Surveys and Stratigraphic Profiles to Reconstruct Sites and Past Terrains	7
Bogdan Bobowski – Krzysztof Walczak – Mirosław Stawniak Hybrid 3D Visualisations of Archaeological Sites: Dynamic 3D Visualisations of Harris Matrix Data for Rescue Town Excavations, Gdańsk / Szafarnia Site, Poland	7
Undine Lieberwirth 3D GIS Voxel-Based Model Building in Archaeology	8
Giulio Fabricatore – Francesca Cantone Pushing the Archaeological Interpretation by Analysing Workflow Protocols: The “Variable Transparency Image Stacker” and DATARCH® Archaeological Data Management System	8
Martin Gussone – Manfred Stephani – Dorothée Sack Resafa and its Surroundings – Resafa-Sergiupolis / Rusafat Hisham The Employment and Evaluation of Diverse Methods	9
Shannon J. P. McPherron – Harold L. Dibble – Deborah Olszewski GPS Surveying and On-Site Stone Tool Analysis: Equipping Teams for Landscape Analysis in the Egyptian High Desert	9
Michael Rains Silchester – A Virtual Research Environment for Archaeology	10
Stuart Eve – Guy Hunt ARK: A Development Framework for Archaeological Recording	10
02 GEOPHYSICAL PROSPECTING	11
Apostolos Sarris – Nikos Papadopoulos – Vasilis Trigkas – Eleni Kokkinou – Dimitris Alexakis – Georgia Kakoulaki – Emanuela de Marco – Evi Seferou – Guangrong Shen – Marios Karaoulis – Kleanthis Simirdanis – Foteini Kondili – Marianna Karifori – Meliha Dogan – Yiannis Lolos – Thanasis Kalpaxis Recovering the Urban Network of Ancient Sikyon Through Multi-component Geophysical Approaches	11

Contents

Immo Trinks – Lars-Inge Larssons Geophysical Archaeological Prospection in Rescue Archaeology: Examples from Sweden	17
Ercan Erkul – Andreas Hüser – Harald Stümpel – Tina Wunderlich Combined Geophysical Survey of an Ancient Hittite Dam: New and Old High-Tech	24
Mohamed Abdelwahab Mohamed Ali – Hans Burkhardt – Badr el Din Khalil Integration of Magnetic and Resistivity Imaging Surveys for Archaeological Prospection in the Southern Part of Meroe City (Capital of Kush, Sudan)	24
Burkart Ullrich – Thomas Günther – Carsten Rücker Electrical Resistivity Tomography Methods for Archaeological Prospection	25
Henning Zöllner – Burkart Ullrich – Renate Rolle – Sergey Makhortykh – Michail Orlyuk Results of Geophysical Prospection in the Scythian Settlement of Belsk (Boľšoe Belskoe Gorodišče).	25
Anna Klochko – Dmitry Shishkov Virtual Georadar Modelling of Significant Archaeological Sites	26
03 3D DATA ACQUISITION AND PROCESSING	27
Karsten Lambers – Fabio Remondino Optical 3D Measurement Techniques in Archaeology: Recent Developments and Applications	27
Stefano Campana – Fabio Remondino Fast and Detailed Digital Documentation of Archaeological Excavations and Heritage Artifacts	36
Sabry F. El-Hakim - Fabio Remondino - Lorenzo Gonzo - Francesca Voltolini Effective High Resolution 3D Geometric Reconstruction of Heritage and Archaeological Sites from Images	43
Tim Gernat – Shannon J.P. McPherron – Harold L. Dibble – Jean-Jacques Hublin An Application of Structured Light Scanning to Documenting Excavated Surfaces and <i>in situ</i> Finds: Examples from the Middle Paleolithic Sites of Jonzac and Roc de Marsal, France	51
Norbert Zimmermann – Gerold Eßer Showing the Invisible – Documentation and Research on the Roman Domitilla Catacomb, Based on Image Laser Scanning and 3D Modelling.	58
Peter Fux – Martin Sauerbier – Janine Peterhans – Thomas Kersten – Maren Lindstaedt Documentation and Interpretation of the Petroglyphs of Chichictara, Palpa (Peru), Using Terrestrial Laser Scanning and Image-Based 3D Modeling	65
Maja Aufschnaiter – Anja Cramer – Guido Heinz – Hartmut Müller Documentation of Medieval Caves in Southern Crimea (Ukraine) Using Hybrid Data Sources.	72

Contents

Dieter Dirksen – Zoltan Böröcz – Guido Bischoff – Lena Loerper – Albrecht Jockenhövel High Resolution Documentation and Evaluation of Decorated Wall Stones with Optical 3D Measurements Techniques taking the Megalithic Gallery-Grave at Züschen / Lohne (Germany) as an example	78
Michael Jansen – Georgios Toubekis – Andreas Walther – Marina Döring-Williams – Irmengard Mayer Laser Scan Measurement of the Niche and Virtual 3D Representation of the Small Buddha in Bamiyan	83
Hubert Mara – Robert Sablatnig Evaluation of 3D Shapes of Ceramics for the Determination of Manufacturing Techniques . . .	91
Albert Wiedemann Pictured Descriptions of Spatial Objects	98
Giuliano De Felice – Nunzia Maria Mangialardi – Maria Giuseppina Sibilano – Giuliano Volpe Late Roman Villa at Faragola (Foggia, Italy): Laser Scanning for a Global Documentation Methodology During Field Research.	98
Lena Loerper – Albrecht Jockenhövel – Dieter Dirksen Re-inspection of the Megalithic Art of the Gallery-Grave at Züschen/Lohne, Germany, with Optical 3D Measurements Techniques	99
Arleyn Simon – Gerald Farin – Christian Lübke – George Indruszewski – Jeremy Rowe Ceramic Technologies Digital Library (CTDL): A Digital Repository of Medieval Ceramics; A Preliminary Report	99
04 3D MODELLING AND VISUALISATION	101
Laia Pujol Tost Does Virtual Archaeology Exist?	101
Ferenc Traser Bringing Time and Change to Life in the Visualization of Greek Architecture	108
David Koller The Digital Forma Urbis Severiana	115
Johannes Bäuerlein – Rafael Pokorski – Stefan Maass – Jürgen Döllner Visualization Project of Roman Cologne – How to Make VR Models Available for Scientific Work.	121
Ulla Rajala Visualising Archaic Tombs and their Postdepositional Histories: The 3D Modelling of the Tombs from Cisterna Grande, Crustumerium (Rome, Italy).	127
Richard Levy – Peter Dawson Structural Analysis: A Tool for Testing 3D Computer Reconstructions of Thule Whalebone Houses	134

Contents

Kari Uotila	
The Lifecycle of a Medieval Stone House and How to Model it in 4D	140
Sorin Hermon – Joanna Nikodem	
3D Modelling as a Scientific Research Tool in Archaeology	140
Stefan Baumeier	
3D Models in Settlement Research – Potentials and Drawbacks of Digital Models as Scientific Working Tools and for Presentation to Non-Professionals	141
Alexandra Riedel – Thomas Bauer	
Three-dimensional Computer Models as a Working Tool for Documentation and Investigation in Building Archaeology – Pretty and Useful?	141
David Johnson	
Architectural Drafting Standards in Archaeological Computer Modeling: Reconstructions from Drawings and Surveys of the Metropolitan Museum of Art Egyptian Expedition	142
Peter Ferschin – Iman Kulitz – Andreas Jonas – Dietrich Raue	
Spatial and Temporal Visualization in Archaeology Examples from the Excavation on Elephantine, Egypt	143
Thomas van Reimersdahl – Peter Melms – Henner von Hesberg	
3D Visualization Limitations of Historical Spaces: Requirements, Practices and Technical Visions	143
Andreas Georgopoulos – Charalabos Ioannidis – Marinos Ioannides	
3D Virtual Reconstructions at the Service of Computer Assisted Archaeological Measurements	144
Michael Anderson	
Putting the “Reality” in Virtual Reality: New Advances through Game Engine Technology	144
Alex Hale – James Hephher	
3D Data Fusion for the Presentation of Archaeological Landscapes: A Scottish Perspective . . .	145
Vera Moitinho	
Virtual Archaeology: Work in Progress	145
05 IMAGE ANALYSIS	147
Shirley Crompton	
3D Lithic Analysis	147
Paul J. Boon – Sylvia C. Pont – Gert J. M. van Oortmerssen	
Acquisition and Visualization of Cross Section Surface Characteristics for Identification of Archaeological Ceramics	153

Contents

Jan De Beenhouwer Data Management for Moulded Ceramics and Digital Image Comparison: a Case Study of Roman Terra Cotta Figurines	160
Sara Franck Spectral and GIS Analysis for Quarry Location in Ancient Messene, Greece	164
Vincent Mom – Hans Pajmans SECANTO: A Retrieval System and Classification Tool for Simple Artefacts	171
Frederick A. Cooper – Todd Brenningmeyer A Digital Approach for Practical Reconstructions of Fragmented Murals.	171
Martin Lettner – Markus Diem – Robert Sablatnig – Heinz Miklas Digital Image Analysis for the Investigation of Ancient Manuscripts.	172
Martin Kampel – Maia Zaharieva Optical Recognition of Modern and Roman Coins	172
06 DATA MANAGEMENT	173
Peter Ferschin – Andreas Jonas – Iman Kulitz – Dietrich Raue Collaborative Work with Visual Index Structures in Archaeology	173
Elise Meyer – Pierre Grussenmeyer – Jean-Pierre Perrin – Anne Durand – Pierre Drap A Virtual Research Environment for Archaeological Data Management, Visualization and Documentation	179
Peter McKeague – Rebecca Jones The National Database for Scotland: Evolution of the Digital Resource	186
Tony Austin – Jenny Mitcham – Julian D. Richards From Questions to Answers: Outcomes from the ‘Big Data’ Project.	194
Andrea D’Andrea – Gilda Ferrandino Shared Iconographical Representations with Ontological Models	200
Stuart Jeffrey – William Kilbride – Stewart Waller – Julian Richards Thinking Outside the Search Box: The Common Information Environment and Archaeobrowser.	206
Hans Pajmans – Sander Wubben Preparing Archaeological Reports for Intelligent Retrieval	212
Stuart Dunn – Nicolas Gold – Lorna Hughes CHIMERA: A Service Oriented Computing Approach for Archaeological Research.	218
Xavier Rodier – Laure Saligny Social Features, Spatial Features and Temporal Features: An Urban Archaeological Data Model.	218

Contents

John Mc Auley – James Carswell An Open Approach to Contextualising Heterogeneous Cultural Heritage Datasets	219
Maddalena Andreussi – Achille Felicetti The CIDOC CRM Encoding of the “Fontes ad Topographiam Veteris Urbis Romae Pertinentes” by Giuseppe Lugli	219
Laura Pecchioli – Fawzi Mohamed – Marcello Carrozzino – Heinz Leitner Method to Link Data in 3D Environment	220
Vincent Mom – Suzanne Vautier CACTUS, a Document Management System to Support the Archaeological and Historical Research of San Juan, a Plantation on Curaçao	220
07 WEB-BASED SPATIAL DATA MANAGEMENT	221
Stefan Baumeier – Christoph Koeck – Christian Begand OSCAR – A Web-based Multimedia Communication System for Interdisciplinary Settlement Research: Spatial & Temporal Data Organization, Manipulation & Visualization	221
Frank Henze – Heike Lehmann – Wolfgang Langer CISAR – A Modular Database System as a Basis for Analysis and Documentation of Spatial Information	228
Frank Henze A Distributed GIS Architecture for Research in Baalbek Based on CISAR.	234
Christiane Brasse – Katja Heine – Dexu Zhao – Ulrike Wulf A 3D Solution for a Web-based Building Information System.	241
Andrea D’Andrea – Achille Felicetti – Matteo Lorenzini – Cinzia Perlingieri Spatial and Non-Spatial Archaeological Data Integration using MAD	241
Apostolos Sarris – Vasilis Trigkas – Giorgos Papadakis – Michalis Papazoglou – Eleni Peraki – Nektaria Chetzoyiannaki – Maria Elvanidou – Evaggelia Karimali – Katerina Kouriaty – Mariana Katifori – Georgia Kakoulaki – Evaggelia Kappa – Katerina Athanasaki – Nikos Papadopoulos A Web-GIS Approach to Cultural Resources Management in Crete: the Digital Archaeological Atlas of Crete	242
Paolo Ardissonne – Francesca Balossi Restelli – Emanuela Borgia – Emanuele Brienza Web-GIS Solutions for the Analysis and Valorisation of Archaeological Sites in the Mediterranean Basin.	242
Clementina Panella – Marco Fano – Emanuele Brienza – Raffaele Carlani A 3D Web-GIS for the Valley of the Colosseum and the Palatine Hill	243
Todd Brenningmeyer – Frederick A. Cooper A Remote Inventory of Greek Vernacular Architecture: Online Capture of Spatial Information	243

Contents

08 IDENTIFYING SETTLEMENT PATTERNS AND TERRITORIES	245
Benjamin Ducke – Peter C. Kroefges From Points to Areas: Constructing Territories from Archaeological Site Patterns Using an Enhanced Xtent Model	245
Johanna Hilpert – Karl Peter Wendt – Andreas Zimmermann A Hierarchical Model of Scale Levels for Estimations of Population Densities	252
Richard Fletcher – Rona Winter – Isaac Gilead Patterning Human Behaviour in Chalcolithic Southern Palestine: Differing Scales of Analysis	257
Espen Uleberg Scale Dependent Patterns in Large Museum Datasets	266
Krištof Oštir – Žiga Kokalj – Laure Saligny – Florian Tolle – Laure Nuninger Confidence Maps: a Tool to Evaluate Archaeological Data's Relevance in Spatial Analysis. . .	272
Laure Nuninger – François-Pierre Tourneux – François Favory From Archaeomedes to ArchaeDyn	278
Cristina Gandini – Frédérique Bertoncello – Estelle Gauthier – Laure Nuninger – Frédéric Trément Hierarchical Typology and Settlement Patterns Modeling at Interregional Scale.	278
Andrea Moreno Martín Using GIS to Deconstruct Iberian Iron Age landscapes: The Territory of Kelin Between 6th-5th Centuries BC (La Plana d'Utiel, València)	279
Galina Trebeleva The Organization of Taman's Defense from the Mid 1st Century BC to the Turn of the 2nd Century AD: A Historical Simulation Based on GIS Technologies.	279
Doris Mischka Territorial Modelling and Archaeological Data: How Complete Must the Picture Be?	280
Agustín Díez-Castillo – C. Michael Barton – Neus La Roca-Cervigón – Joan Bernabeu Aubán Landscape Socioecology in the Serpis Valley (10,000-4,000 BP).	280
Nicolas Poirier – Florian Tolle Measurements of Diachronic Stability of Agrarian Exploitation.	281
Murielle Georges-Leroy – Florian Tolle – Pierre Nouvel Analysis of the Intensity of Agrarian Exploitation by Spatial Analysis of Ancient Field Systems Preserved by Forest Cover	281
Robin Brigand – Andrea Ninfo Landscape Archaeology in the Venetian Plain (Northern Italy)	282
Juan A. Barceló – Alfredo Maximiano Some Notes Regarding Distributional Analysis of Spatial Data	282

Contents

Ladislav Šmejda	
Expanding Scales in GIS Analysis	283
Jens Andresen – Rasmus Birch Iversen – Peter Jensen	
On the War-Path: Terrestrial Military Organisation in Prehistoric Denmark	283
09 PREDICTIVE MODELLING	285
Philip Verhagen	
Testing Archaeological Predictive Models: A Rough Guide	285
Thomas G. Whitley – Gwendolyn Burns	
Conditional GIS Surfaces and their Potential for Archaeological Predictive Modelling	292
Christoph Siart – Bernhard Eitel	
Geoarchaeological Studies in Central Crete based on Remote Sensing and GIS	299
Alessio Arnese	
Applying Ecological Niche Factor Analysis for Predictive Modelling in the Kaulonia Field Survey	306
Patricia de Vries	
Archaeological Predictive Models for the Elbe Valley around Dresden, Saxony, Germany ...	306
Gwendolyn Burns - Kem Fronabarger - Thomas Whitley	
Predictive Modeling of Cultural Resources in the Theban Necropolis, Luxor, Egypt	307
10 MODELLING MOVEMENT AND PERCEPTION	309
Klemen Zakšek – Elise Fovet – Laure Nuninger – Tomaž Podobnikar	
Path Modelling and Settlement Pattern	309
Ignacio Fiz – Hèctor A. Orengo	
Simulating Communication Routes in Mediterranean Alluvial Plains	316
Hanna Stöger	
Roman Ostia: Space Syntax and the Domestication of Space	322
Eleftheria Paliou	
An Autonomous Agent Approach to the Investigation of Intra-Site Movement and Visibility: The Visual Consumption of Thera Murals from the Public Spaces of LBA Akrotiri (Thera, Greece)	328
Piraye Haciguzeller	
Modeling Human Circulation in the Minoan Palace at Malia	336
Rupert Gietl – Michael Doneus – Martin Fera	
Cost Distance Analysis in an Alpine Environment: Comparison of Different Cost Surface Modules	342

Contents

Tommaso Mattioli	
Landscape Analysis of a Sample of Rock-Art Sites in Central Italy	342
Rafał Zapłata	
Viewshed Analysis, Regional Studies and Cultural Perception.	343
Hèctor A. Orengo – Ignacio Fiz	
The Application of 3D Reconstruction Techniques in the Analysis of Ancient Tarraco’s Urban Topography	343
11 ANALYSING ANCIENT ECONOMIES AND SOCIAL RELATIONS.	345
Nikola Koepke – Joerg Baten	
Anthropometric Methods and the Interdisciplinary Conversation Between Archaeology and Economics.	345
Yasuhisa Kondo	
Where Did They Go Fishing? A Multi-Scalar Spatial Analysis of Jomon Fishing Activities in the Tokyo-Yokohama District, East Japan.	353
Hans-Joachim Mucha – Hans-Georg Bartel – Jens Dolata	
Finding Roman Brickyards in Germania Superior by Model-Based Cluster Analysis of Archaeometric Data	360
Craig Alexander	
The Bedolina Map – an Exploratory Network Analysis	366
Erich Claßen	
Early Neolithic Social Networks in Western Germany	372
Tim Kerig	
Towards an Econometrically Informed Archaeology: The Cologne Tableau (KöTa)	372
Kathrin Nowak	
Approaching Linear Pottery Economics – Distribution and Supply of Amphibolite Adzes. . .	373
Guido Nockemann	
Different Types of Economies within the LBK Settlement Erkelenz-Kückhoven	373
Sara Schiesberg	
Neolithic Economics: A Case Study in Age, Sex and Labour	374
Jutta Lechterbeck	
The Event Horizon in Landscape Development: When Economy Makes the Landscape Cultural	374
Christine Chataigner – Olivier Barge	
Quantitative Approach to the Diffusion of Obsidian in the Ancient Northern Near East. . . .	375

Contents

Estelle Gauthier	
Consumption and Circulation of Prehistoric Products in Europe: Characterization of Spatial Evolutions by Using Map Algebra	375
Ferenc Redő	
The Regularities of Coin-Accumulation, and the Coin-Circulation Based on Settlement-Materials in Pannonia.	376
Larisa Vodolazhskaya	
Reconstruction of Heron’s Formulas for Calculating the Volume of Vessels.	376
12 RECONSTRUCTING ANCIENT LANDSCAPES AND VEGETATION	377
Jutta Lechterbeck	
When the Point Becomes the Area: Multivariate and Spatial Analysis of Pollen Data	377
Shinya Sugita – Marie-José Gaillard – Sofie Hellman – Anna Broström	
Model-Based Reconstruction of Vegetation and Landscape using Fossil Pollen	385
Alejandro Garcia	
Predictive Models and the Evolution of Tree Vegetation during the Final Pleistocene – Holocene Transition. A Case Study from the Asón River Valley (Cantabria, Spain)	392
Dmitry Korobov	
GIS as a Tool for Investigation of Early Medieval Climatic Changes in the Kislovodsk Basin (Southern Russia)	399
Jens Andresen	
Topographic Wetness Index and Prehistoric Land Use	405
Dimitris Alexakis – Theodoros Astaras – Apostolos Sarris – Kostas Vouzaxakis – Lia Karimali	
Reconstructing the Neolithic Landscape of Thessaly through a GIS and Geological Approach	411
Astrid Stobbe	
Palynological and Archaeological Data – a Comparative Approach	411
13 EXPERT KNOWLEDGE, COMMUNICATION AND DISSEMINATION	413
Juan A. Barceló	
Towards a True Automatic Archaeology: Integrating Technique and Theory	413
Giovanna Greco – Bianca Ferrara – Francesca Cantone	
Museo Narrante: the Foce Sele Hera Sanctuary Virtual Museum	418
Areti Damala	
Augmented Reality Based User Interfaces for Mobile Museum and Exhibition Guides.	426

Contents

Despina Kanellou – Andrew Grantham – Karina Rodríguez Echavarría – Halina Gottlieb – Daniel Pletinckx
Bridging the Knowledge Gap between Cultural Heritage and Information and Communication Technologies Professionals: The Network of Expertise 426

Isto Huvila
To Whom it May Concern? The Users and Uses of Digital Archaeological Information. 427

Go Sugimoto - Akira Igarashi
Dividing Wall Collapsed? JAD2 Survey and ACT Archaeology Attempt to Close the Gap between Archaeology and ICT. 427

Preface

This volume contains the proceedings of the 35th Computer Applications and Quantitative Methods in Archaeology (CAA) Conference, held April 2–6, 2007, in Berlin, Germany.

CAA began in 1973 as a small organisation with an annual meeting at the University of Birmingham. As participation grew over the years, the conference was first held outside the UK in Denmark in 1992, and 15 years later, CAA was invited to Germany for the first time. Looking back, it seems hard to understand what took us so long to organise a CAA conference in Germany, as the origins of CAA-related activities reach back here as far as the early 1980s, when the first interest groups on quantitative methods in archaeology were formed in both East and West Germany. Nevertheless, the Berlin conference provided us with an apt opportunity to finally announce that the successor of those early precursors, the former “Arbeitsgemeinschaft Quantitative Methoden”, had been renamed to become the German chapter of CAA.

The idea to host the CAA conference in Germany was originally proposed in 2004 by Benjamin Ducke (then at the University of Kiel) and Axel Posluschny (Roman Germanic Commission [RGK] of the German Archaeological Institute [DAI]) and soon found ample interest and support. In the end, the Berlin conference was jointly organised by the DAI, the German chapter of CAA, the Interdisciplinary Centre for the Study of the Ancient World at the Free University of Berlin and the Collection of Classical Antiquities of the National Museums in Berlin. We received generous financial support from the German Research Foundation (DFG) and the aforementioned Berlin-based institutions, as well as from our sponsors (Eastern Atlas and Verlag Philipp von Zabern), advertisers and exhibitors. Without their support, it would not have been possible to host this conference.

A Look Back at the Berlin Conference

With 554 participants from 39 countries, the 2007 conference was the largest CAA conference to date. In 42 sessions organised around a wide range of topics, 287 papers, 47 posters and 6 demos were presented. Furthermore, 10 workshops and a round table discussion were offered. The volume of contributions required up to 10 parallel sessions to be held over 4½ days. Certainly not everyone was happy with a conference of this size, but it nevertheless shows that CAA continues to be an attractive meeting point for professionals from a variety of backgrounds. The scientific programme of the conference was put together by the editors of this volume (Axel Posluschny, Karsten Lambers and Irmela Herzog), who were supported by many colleagues whose contributions are acknowledged below.

Some particularities of the Berlin conference as compared to previous conferences are worth mentioning. We fully integrated the workshops into the conference programme in order to avoid holding the opening session when the conference was already in full swing. We also gave the poster and demo session a prominent place in the programme by keeping its time slot free of any parallel sessions. While we feel that these choices were fully justified by the broad attendance of the poster and demo session as well as the workshops, they were also an expression of the freedom of each local organising team to try out new concepts, thereby continuously adapting the CAA format to new requirements. We enjoyed this freedom and encourage future conference organisers to make full use of it as well.

The sessions and workshops were complemented by a variety of other activities. In the central conference lobby, 16 exhibitors presented a wide range of CAA-related products, among them archaeological journals and monographs, visualisation software, 3D scanners and excavation databases. The European Network of Excellence EPOCH chose to convene during the CAA conference and organised sessions as well as workshops on the topics of their research. Most importantly, the Berlin conference saw the foundation of both the German and the North American chapters of the worldwide CAA community.

The Free University was a perfect location for the conference. We are grateful to the local organising team led by Agnes Henning and Hauke Ziemssen and supported by Katja Moede and others for their dedicated efforts before and during the conference. We also appreciate Jörg Denking's contribution, who developed a highly recognisable graphic design for all conference materials and co-produced, together with Hauke

Ziemssen, an attractive and easy to use abstract book. Warm thanks also go to the IT department of the DAI head office as well as to staff members from both the DAI and the Free University for contributing to the success of the conference instead of enjoying their Easter holidays.

The CAA 2007 conference was held under the auspices of His Excellence Dr. Frank-Walter Steinmeier, the German Minister of Foreign Affairs. We are grateful for his support and for the opportunity to host the welcome reception at the Federal Foreign Office. The National Museums in Berlin offered free entry and special guided tours for all conference participants and were in charge of the organisation of the conference dinner and the farewell reception. The contributions of Martin Maischberger to these activities are gratefully acknowledged. Michael Meyer, then member of the Archaeological Service of the Brandenburg State Office for Historical Monuments arranged the post-conference tour to various sights in Brandenburg. The social programme, as well as the wide choice of other cultural highlights and activities in Berlin gave conference attendees ample opportunities to use their conference badges for free rides on the Berlin subway to see the sights and enjoy more than just an inspiring conference.

About this Volume

The present volume contains a selection of the papers, posters, and workshops presented in Berlin. Of the papers given in Berlin but missing here, the majority were not submitted for publication, while a few others were rejected during the review process. Some sessions held in Berlin are not represented here as none of the papers were submitted. Therefore we organised the remaining papers into new sections that in our view give a good idea of the main topics currently discussed within the CAA community. For the purpose of publication, long and short papers as well as posters were all treated alike and allowed approximately 6 pages. Following CAA's publication policy, discussed during previous General Annual Meetings, we decided to publish all accepted papers on CD and only a selection of them in print. We generally selected those papers recommended for printed publication by the reviewers, regardless of their topic. This explains why some sections contain more printed papers than others. For the sake of user-friendliness the titles, abstracts and file names of all those papers published in their entirety on CD only are also listed in the printed volume. Many papers published both in print and on CD contain colour figures that could only be reproduced correctly on CD, as the book had to be printed in black and white. In all cases where captions make reference to coloured elements of figures, the reader is therefore referred to the corresponding PDF file on the accompanying CD.

The peer-review procedure comprised two steps: (1) All abstracts were reviewed prior to the conference. (2) After the conference, all papers submitted for publication were again reviewed. Such an elaborate review procedure required the willingness and expertise of many volunteers, which was indeed generously offered to us by the many colleagues mentioned below. Unfortunately, we had to impose a tight schedule on the whole process. As the discussion during the General Annual Meeting in Berlin clearly showed, delayed publication of proceedings is currently one of the most pressing issues among the CAA community. Therefore we strove to publish this volume in time before the following CAA conference in Budapest. Shortly before Budapest, however, a most unfortunate series of technical issues and communication problems with the company commissioned to do the language editing and typesetting of the manuscripts for the printed volume caused a delay of several months, requiring the re-negotiation of the original contract. We apologise for any discord that our tight publication schedule and the subsequent delayed publication of this volume may have caused.

Our major concern was the quality of the proceedings, as in our opinion CAA proceedings should continue to be reference publications for people interested in computer applications and quantitative methods in archaeology. While most reviewers contributed to this quality control by submitting detailed and insightful comments on the reviewed papers, for which we are extremely grateful, the varying quality and elaborateness of other reviews sometimes left authors and editors alike at a loss how to respond. We therefore recommend future proceedings editors to take a more structured approach to the review procedure.

These minor issues aside, we greatly enjoyed working with all people who made the publication of this volume possible. The scientific committee was comprised of all reviewers of abstracts and papers as well

as chairs of sessions and workshops, mentioned here in alphabetical order. We very much appreciate their valuable assistance.

Dean Abernathy (chair)	Mark Lake (abstracts, papers, chair)
Craig Alexander (abstracts, papers, chair)	Karsten Lambers (abstracts, papers, chair)
Jens Andresen (papers)	Guus Lange (papers)
Michael Ashley (chair)	Jutta Lechterbeck (abstracts, papers, chair)
Juan Barceló (papers, chair)	P. Martijn van Leusen (abstracts, chair)
Ruth Beusing (abstracts, papers)	Gary Lock (abstracts, papers, chair)
Wolfgang Börner (abstracts, papers)	Scott Madry (abstracts, chair)
Kai-Christian Bruhn (abstracts, papers, chair)	Emilia Masci (chair)
Jeffrey Clark (chair)	Nicolas Melard (abstracts, chair)
Erich Claßen (chair)	Katja Moede (abstracts)
Ortwin Dally (papers)	Vincent Mom (chair)
Bruno Deiss (abstracts)	Mark Mudge (papers, chair)
Benjamin Ducke (abstracts, papers, chair)	Johannes Müller (chair)
Harrison Eiteljorg (papers)	Matthias Müller (chair)
Jörg Faßbinder (abstracts, papers)	Nils Müller-Scheeßel (chair)
Kelly Fennema (papers, chair)	Franco Niccolucci (papers)
Kate Fernie (chair)	Laure Nuninger (papers)
Arne Flaten (abstracts, papers, chair)	Clive Orton (abstracts, papers)
Friederike Fless (chair)	Hans Paijmans (chair)
Reinhard Förtsch (abstracts, chair)	Daniel Pletinckx (papers)
Bernard Frischer (abstracts, papers, chair)	Axel Posluschny (abstracts, papers, chair)
Andreas Georgopoulos (chair)	Marin Posselt (abstracts, papers, chair)
Alyson A. Gill (abstracts, papers, chair)	Luke Premo (abstracts, papers, chair)
Armin Gruen (chair)	Knut Rassmann (abstracts, papers, chair)
Thomas Hanusch (chair)	Karina Rodriguez (chair)
David Haskiya (abstracts, papers, chair)	Nick Ryan (papers)
Robert Hecht (chair)	Martin Sauerbier (abstracts, papers, chair)
Katja Heine (abstracts, papers, chair)	Ladislav Smejda (papers)
Markus Helfert (abstracts, papers)	Stephen Stead (abstracts, papers, chair)
Agnes Henning (chair)	Hanna Stoeger (chair)
Irmela Herzog (abstracts, papers, chair)	Burkart Ullrich (abstracts, chair)
Henner von Hesberg (abstracts, chair)	Philip Verhagen (papers, chair)
Elisabeth Jerem (papers, chair)	David Wheatley (chair)
Hans Kamermans (abstracts, papers, chair)	Tom Whitley (abstracts, papers, chair)
Tim Kerig (abstracts, papers, chair)	Ben Wood (chair)
Rainer Komp (abstracts, chair)	Samuel Wood (chair)
Martin Kuna (papers)	Ulrike Wulf-Rheidt (abstracts, papers, chair)
	Andreas Zimmermann (abstracts, papers, chair)

Michèle Eller, Markus Helfert and Hauke Ziemssen provided essential editorial assistance during various stages of the reviewing and editing process. Hermann Parzinger, then president of DAI, endorsed our efforts from the beginning and provided ample organisational and financial support. The same applies for Friedrich Lüth, director of RGK, who furthermore helped us by agreeing to publish this volume in a suitable RGK book series. Finally, we owe substantial advice on the layout and contents of the volume to Susanne Sievers, vice director of RGK. Without these valuable contributions, this volume could not have been published.

All in all, organising the Berlin conference and preparing this volume was a very time-consuming, yet highly rewarding and inspiring experience. We are glad to have followed the example of so many colleagues who took on this task before us, and encourage all others to share this experience in the future.

Frankfurt, Bonn, Konstanz, Berlin, November 2008

The Editors and the Conference Organisers

Ortwin Dally,
Friederike Fless,
Irmela Herzog,
Tim Kerig,
Karsten Lambers,
Axel Posluschny,
Andreas Scholl

Agustín Díez-Castillo

*Fundació General Universitat de València
plaça del patriarca, 4-1
46002 València
Spain
adiez@uv.es*

Neus La Roca-Cervigón

*University of Valencia
Department of Geography
Aoda. Blasco Ibáñez, 13.
46010 València
Spain*

C. Michael Barton

*Arizona State University
School of Human Evolution and Social Change
PO Box 872402
Tempe, AZ 85287-2402
USA*

Joan Bernabeu-Aubán

*University of Valencia
Department of Prehistory and Archaeology
Aoda. Blasco Ibáñez, 13.
46010 València
Spain*