



Syddansk Universitet

## TORC1 Inhibits GSK3-Mediated Elo2 Phosphorylation to Regulate Very Long Chain Fatty Acid Synthesis and Autophagy

Zimmermann, Christine; Santos, Aline; Gable, Kenneth; Epstein, Sharon; Gururaj, Charulatha; Chymkowitch, Pierre; Pultz, Dennis; Rødkær, Steven Vestergaard ; Clay, Lorena; Bjørås, Magnar; Barral, Yves; Chang, Amy; Færgeman, Nils J.; Dunn, Teresa M; Riezman, Howard; Enserink, Jorrit M

*Published in:*  
Cell Reports

*DOI:*  
[10.1016/j.celrep.2017.02.020](https://doi.org/10.1016/j.celrep.2017.02.020)

*Publication date:*  
2017

*Document version*  
Publisher's PDF, also known as Version of record

### *Citation for published version (APA):*

Zimmermann, C., Santos, A., Gable, K., Epstein, S., Gururaj, C., Chymkowitch, P., ... Enserink, J. M. (2017). TORC1 Inhibits GSK3-Mediated Elo2 Phosphorylation to Regulate Very Long Chain Fatty Acid Synthesis and Autophagy. *Cell Reports*, 18(8), 2073-2074. DOI: 10.1016/j.celrep.2017.02.020

### **General rights**

Copyright and moral rights for the publications made accessible in the public portal are retained by the authors and/or other copyright owners and it is a condition of accessing publications that users recognise and abide by the legal requirements associated with these rights.

- Users may download and print one copy of any publication from the public portal for the purpose of private study or research.
- You may not further distribute the material or use it for any profit-making activity or commercial gain
- You may freely distribute the URL identifying the publication in the public portal ?

### **Take down policy**

If you believe that this document breaches copyright please contact us providing details, and we will remove access to the work immediately and investigate your claim.

Download date: 09. Sep. 2018

# TORC1 Inhibits GSK3-Mediated Elo2 Phosphorylation to Regulate Very Long Chain Fatty Acid Synthesis and Autophagy

Christine Zimmermann, Aline Santos, Kenneth Gable, Sharon Epstein, Charulatha Gururaj, Pierre Chymkowitz, Dennis Pultz, Steven V. Rødkær, Lorena Clay, Magnar Bjørås, Yves Barral, Amy Chang, Nils J. Færgeman, Teresa M. Dunn, Howard Riezman, and Jorrit M. Enserink\*

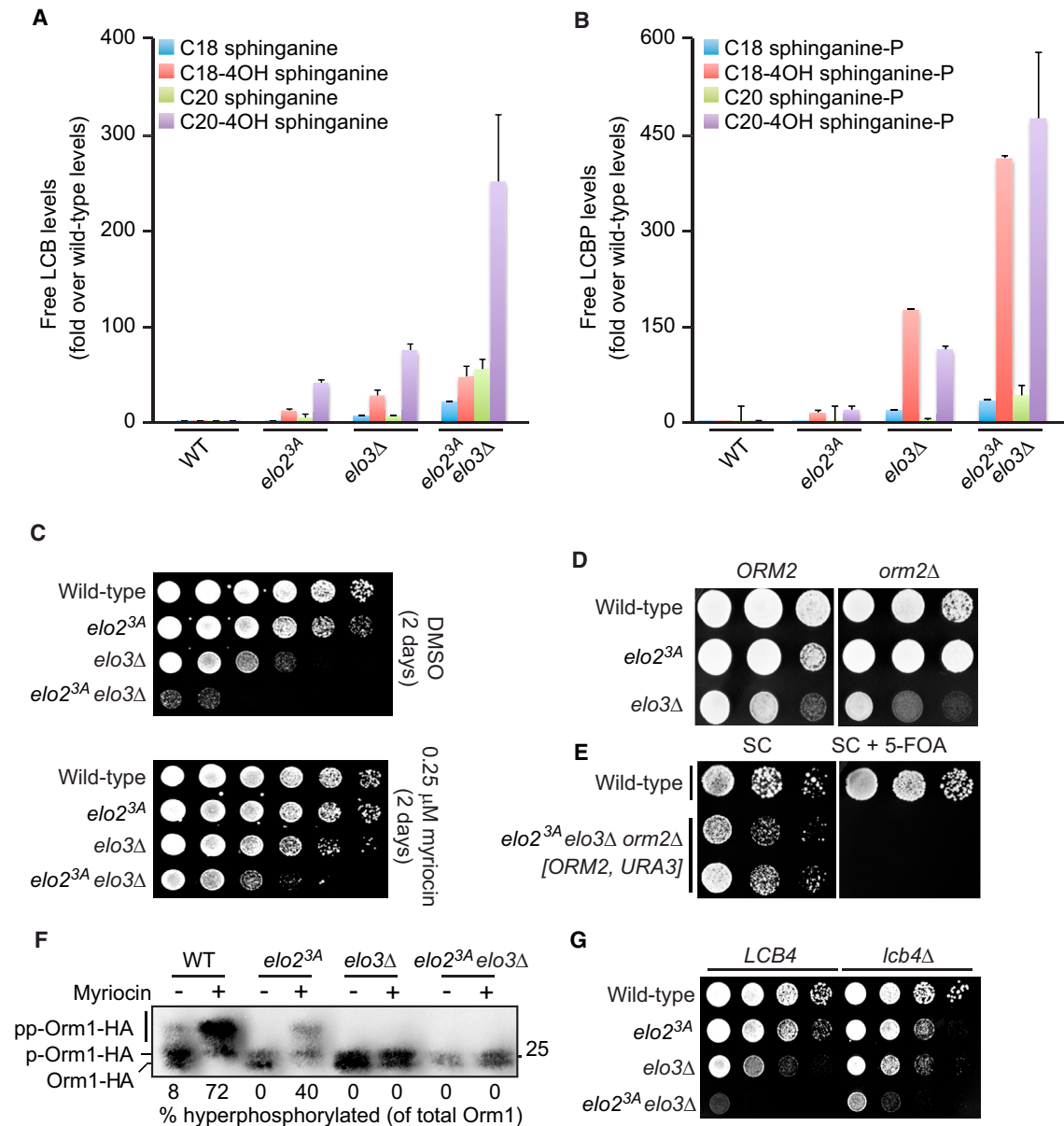
\*Correspondence: [jorrit.enserink@rr-research.no](mailto:jorrit.enserink@rr-research.no)

<http://dx.doi.org/10.1016/j.celrep.2017.02.020>

(Cell Reports 5, 1036–1046; November 27, 2013)

In the originally published version of this article, part of a panel shown in Figure 3D was inadvertently duplicated from Figure 3C during preparation of the figure. The correct version of this figure is shown below.

The authors regret this error.



**Figure 3. Accumulation of LCBs in *elo2* and *elo3* Mutants Impairs Cell Viability**