



Mavritsaki, Eirini and Allen, Harriet A. and Humphreys, Glyn W. (2008) Decomposition of neural circuits of human attention using a model based analysis: sSoTs model application to fMRI data. *Progress in Neural Processing*, 18 . pp. 401-414. ISSN 2010-2895

Access from the University of Nottingham repository:

<http://eprints.nottingham.ac.uk/44444/3/MavritsakiAllenHumphreysProgNeural2008.pdf>

Copyright and reuse:

The Nottingham ePrints service makes this work by researchers of the University of Nottingham available open access under the following conditions.

This article is made available under the University of Nottingham End User licence and may be reused according to the conditions of the licence. For more details see: http://eprints.nottingham.ac.uk/end_user_agreement.pdf

A note on versions:

The version presented here may differ from the published version or from the version of record. If you wish to cite this item you are advised to consult the publisher's version. Please see the repository url above for details on accessing the published version and note that access may require a subscription.

For more information, please contact eprints@nottingham.ac.uk

DECOMPOSITION OF NEURAL CIRCUITS OF HUMAN ATTENTION USING A MODEL-BASED ANALYSIS: SSoTS MODEL APPLICATION TO FMRI DATA

EIRINI MAVRITSAKI, HARRIET ALLEN AND GLYN HUMPHREYS

*Behavioral Brain Sciences Centre, School of Psychology, University of Birmingham, UK,
B15 2TT*

The complex neural circuits found in fMRI studies of human attention were decomposed using a model of spiking neurons. The model for visual search over time and space (sSoTS) incorporates different synaptic components (NMDA, AMPA, GABA) and a frequency adaptation mechanism based on I_{AHP} current. This frequency adaptation current can act as a mechanism that suppresses the previously attended items. It has been shown [1] that when the passive process (frequency adaptation) is coupled with a process of active inhibition, new items can be successfully prioritized over time periods matching those found in psychological studies. In this study we use the model to decompose the neural regions mediating the processes of active attentional guidance, and the inhibition of distractors, in search. Activity related to excitatory guidance and inhibitory suppression was extracted from the model and related to different brain regions by using the synaptic activation from sSoTS's maps as regressors for brain activity derived from standard imaging analysis techniques. The results show that sSoTS pulls-apart discrete brain areas mediating excitatory attentional guidance and active distractor inhibition.

1. Introduction

In order to understand both the functional mechanisms and the underlying neural substrates of brain functions, investigators are increasingly combining behavioral studies with fMRI. However, given the limited spatial and temporal resolution of fMRI, it is often difficult to separate the different functional processes that may contribute to visual selection. Specifically, different functional processes can combine to influence selection. One way to advance the analysis of fMRI data is to link the data to an explicit model of performance, which does distinguish between the different functional processes, and which can be used to predict the variation in fMRI signal as the different processes take place. Here we present an example of this using the Spiking Search over Time and Space (SSoTS) model of visual search [1]. We show how sSoTS can be used to distinguish fMRI signals associated with excitatory and inhibitory processes in search, providing a more detailed analysis of the relations between cognitive and neuronal function.

1.1. *Human visual search*

Traditionally, in visual search tasks participants are asked to find a known target item amongst irrelevant distracter items, and the time it takes participant to identify the target is measured (the reaction time (RT)). Watson and Humphreys [2] devised a version of visual search where both temporal and spatial features of targets and distracters were varied. They adapted a standard color-form conjunction task, but presented half of the distractors (the preview) prior to the other distracters and the target (when present). They showed that this preview search condition was facilitated relative to the standard conjunction search, with search efficiency approximating that found when the new items were presented alone (the 'single feature baseline'). Watson and Humphreys [2] proposed that temporal prioritization in search tasks depends, at least in part, on the active ignoring of old items – a process they termed visual marking. Humphreys et al. [3] showed that visual marking is disrupted when a secondary task must be conducted during the preview, consistent with the secondary task disrupting top-down ignoring of old items. In addition, there is also evidence for top-down excitatory biases influencing search. For example a positive bias for expected target properties can offset the effects of an inhibitory bias against the features of old distracters [4] (induced by, for example, instructions or changes in display).

There is now considerable evidence that search is contingent on a network of neural circuits in frontal and parietal cortex that control both voluntary and reflexive orienting of attention to visual information [5]. The inter-play between the different parts of this fronto-parietal circuit however remains less understood.

Brain imaging studies of preview search [6, 7] converge to demonstrate that the preview period is associated with activation within the superior parietal cortex and the precuneus. Allen et al. [8] examined preview search both when a preview task was carried out alone and under conditions of secondary task load (a visual memory task was interleaved with preview search). In a single feature baseline, the participant had to locate a blue house target amongst red house distracters. In a conjunction condition, the same target had to be found amongst blue faces and red house distracters. In the preview condition, the preview items (blue faces) appeared 2 sec before the search display (red houses and blue house target). In the visual memory task participants had to memorize the positions of dots presented before the preview display. Then, after the presentation of the preview, either the dots re-appeared or the search display was presented. When the dots re-appeared the task was to judge whether one had moved location. This study used faces and houses as search items rather than the typical lines or letters. This allowed Allen et al [8] to draw conclusions about the activity in stimulus-

specific cortex (e.g. fusiform face area). Although there are differences in behavior with these more complex stimuli, crucially, Allen et al. [8] found a behavioral advantage for preview search which decreased when there was a memory load. Active ignoring of the preview display was associated with activation in a network of brain areas in posterior parietal cortex. These same regions were active during the visual memory task and decreased their activation for preview displays when the memory task was imposed.

1.2. *Modelling human search*

Over the past ten years, increasingly sophisticated computational models of visual search and selection have been proposed [9-12]. These models generate a system-level account of performance, emerging from interactions between different local components. This provides an important means of examining how interactions within a complex network generate coherent behavior.

The majority of models to-date have used relatively high-level connectionist architectures, where (e.g.) activity within any processing unit typically mimics the behavior of many hundreds of, rather than individual, neurons [e.g. [9]]. Such models not only operate at a level of abstraction across individual neurons, but they also very often include network properties divorced from real neuronal structures (e.g., with units being both excitatory and inhibitory, depending on the sign of their connection to other units). One exception to this approach is the work of Deco and colleagues [10, 13] who simulated aspects of human attention with models based on ‘integrate and fire’ neurons. These networks utilize biologically plausible activation functions and generate outputs in terms of neuronal spikes (rather than, e.g., a continuous value, as in many connectionist systems). One attempt to simulate human search over time as well as space has been made using the spiking Search over Time and Space model (SSoTS)[1, 14], which represents an extension of the original work of Deco and Zihl [10]. sSoTS uses a system of spiking neurons modulated by NMDA, AMPA, GABA transmitters along with an I_{AHP} current, as originally presented by Deco and Rolls [13] (see also [15]). sSoTS is separated into processing units that encode the presence of independently coded features (e.g. color and form, see Figure 1). The feature maps can be thought as high-level representations for groups of low level of features. There is, in addition, a ‘location map’ in which units respond to the presence of any feature at a given position. At each location (in the feature maps and the location map), there is a pool of spiking neurons, providing some redundancy in the coding of visual information. The feature maps may correspond to collections of neurons in the posterior ventral cortex (e.g., V4),

while the location map may correspond to collections of neurons in dorsal (posterior parietal) cortex (for more information for the model see [1]). Over time, the model converges upon a target, with reaction times (RTs) based on the real-time operation of the neurons.

Search efficiency in sSoTS is determined by the degree of overlap between the features of the target and those of distracters. RT lengthen as overlap and competition for selection both increase. Thus, search for a conjunction target (sharing one feature with each of two distracters) is more difficult than search for a feature-defined target (differing from the distracters by a unique feature). Mavritsaki et al. [1, 14] showed that search in the conjunction condition also increased linearly as a function of the display size, mimicking ‘serial’ search.

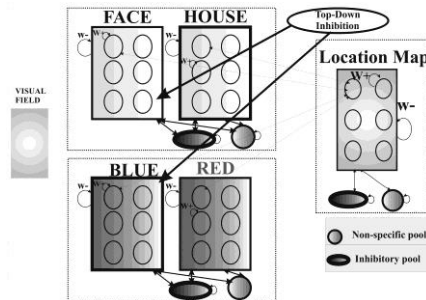


Figure 1: The architecture of the sSoTS model: The maps outlined in bold (Blue and House maps) receive top-down excitation (for the expected target) and the maps linked to the external inhibitory pool (the Blue and Face maps) receive the top-down inhibition (for the features of the preview).

In addition to modeling spatial aspects of search, SSoTSs also successfully simulated data on search over time, in the preview search paradigm [2, 16]. Provided the interval between initial items and the search display is over 450 ms or so, the first distracters in preview search have little impact on behavioral performance [2, 16]. The sSoTS model generated efficient preview search when there was an interval of over 500ms between the initial items and the final search display. sSoTS

mimics the behavioral time course due to the contribution of: (i) a spike frequency-adaptation mechanism generated from a slow $[Ca^{2+}]$ -activated K^+ current, which reduces the probability of spiking after an input has activated a neuron for a prolonged period [17], and (ii) a top-down inhibitory input that forms an active bias against known distracters. The slow action of frequency-adaptation simulates the time course of preview search. The top-down inhibitory bias matches data from human studies where the detection of probes has been shown to be impaired when they fall at the locations of old, ignored distracters [18, 19]. In addition, in explorations of the parameter space for SSoTS, Mavritsaki et al. [1, 14] found that active inhibition was necessary to approximate the behavioral data on preview search. These results, using the sSoTS model, indicate that processes of co-operation and competition between processing units may not be sufficient to account for the full range of data on

human selective attention and that factors such as frequency adaptation are required in order to simulate the temporal dynamics of visual attention.

1.3. *Linking the model to fMRI*

Imaging studies have shown a network of regions in posterior parietal cortex (PPC) (including superior parietal cortex and precuneus, extending into occipital cortex) associated with successful prioritization of the new target and ignoring of the old distracters. However, the increased activation in these regions found in preview search is ambiguous, because preview search is influenced by both positive expectancies for targets and inhibitory suppression of distracters [20]. This ambiguity is not apparent in the sSoTS model, though, where effects of top-down expectancies and inhibitory biases against distracters can be distinguished. For example, the map associated with the feature of the old distracters that does not re-occur in the search display (i.e., the map for face stimuli, in Allen et al. [8]) uniquely receives top-down inhibition in sSoTS. The map corresponding to the feature of the target not present in the old distracters (i.e. houses in Allen et al [8]) uniquely receives top-down activation. The changes in activity over time in these maps may be used to predict changes in the fMRI signal linked, respectively, to top-down expectancies and inhibition. The distinct time courses of activation in the model may then be used to pull-apart activity from within the regions linked to preview search, allowing us to isolate the neural regions concerned with excitatory and inhibitory modulation of processing. We report an analysis of fMRI data on preview search taking this approach.

2. sSoTS architecture

sSoTSs consists of spiking neurons organized into pools containing several units with similar biophysical properties and inputs. The simulations were based on a highly simplified case where there were six positions in the visual field, allowing up to 6 items in the final search displays. sSoTS has three layers of retinotopically-organized units, each containing neurons that activate on the basis of a stimulus falling at the appropriate spatial position. There is one layer for each feature dimension ("color" and "form") and one layer for the location map (Figure 1). The feature maps encode information related to the features of the items presented in an experiment – in this case, Allen et al. [8]. Here, the two features encoded are color and object shape (i.e. house or face). Here, the feature dimension "color" encoded information on the basis of whether blue or red was presented in the visual field at a given position i , ($i=1,\dots,6$) (creating activity in the red and blue feature maps). The feature dimension "form" encoded

information on the basis of whether there is a house or face present in the visual field at a given position i . The pools in the location map sum activity from the different feature maps to represent the overall activity for the corresponding positions in the visual field. Each of the layers contains one inhibitory pool (see also [13]) and one non-specific pool, along with the feature maps.

The system used and the connections are illustrated in Figure 1. More details about the architecture of sSoTs, the organisation of the units (neurons) in the network and the neuronal characteristics can be found in Mavritsaki et. al [1].

The parameters for the simulations were established in baseline conditions with ‘single feature’ and ‘conjunction’ search tasks as reported by Watson and Humphreys [2] and Allen et al. [8] (conjunction search: blue house target vs. red houses and blue faces distracters; feature search: blue face target vs. red houses distracters). The generation of efficient and less efficient (linear) search functions in these conditions replicates the results of Allen et al. [8]. These same parameters were then used to simulate preview search. RTs were based on the time taken for the firing rate of the pool in the location map to cross a relative threshold (thr), (for more details see [1]). Detailed simulations were run at the spiking level only, to match the experimental results [8]. Additionally, to simulate the working memory effect, we reduced slightly the top-down inhibition during the ‘working memory’ trials – assuming this is equivalent to the effects generated when human participants hold another stimulus in working memory during the preview period.

3. Applying the sSoTS model to fMRI data

3.1. *Extraction of activation maps for top down inhibition and excitation*

During the preview period activation in the model is affected by several factors: top-down excitation (for the target), top-down inhibition (for old distracters) and passive inhibition caused by frequency adaptation. To compare the fMRI data with the model activation patterns we extracted activation maps from the model related to the above mechanisms. For example, consider preview search for a new blue house target amongst previewed blue faces and new red houses distracters [8]. In sSoTS there is positive bias applied to maps representing the features of targets, for Allen et al. [8] the target is a blue house, therefore the map that encodes the shape “house” and the map that encodes the color “blue” receive top-down excitation. Furthermore, there is an inhibitory bias applied to maps representing the features of old distracters (distracters presented during the preview), these distracters are blue faces, so the map that encodes the shape

“face” and the map that encodes the color “blue” both receive top-down inhibition. By tracing activity in the house, face and blue maps, we can correlate brain activity with active excitatory and inhibitory biases in the model. Note that we are interested in activity relating to these biases and processes, not to the distracter features or colors.

To extract the brain activity relating to these processes, we first extracted a time course of the activity in each of the sSoTS maps (2 x shape, 2 x feature and the location map) over the experiment of Allen et al [8]. These time courses were convolved with a standard estimate of the hemodynamic function and used as regressors for the fMRI activity. To estimate the activations associated with positive biases for targets and inhibitory biases against distracters (see Table 1 and 2) we compared the activations found for each map (for both the conjunction and preview search conditions). Thus, for conjunction search, the positive top-down bias was given by (Target form – Distractor form) + (Target color – Distractor Color), i.e: ($House - Face + Blue - Red$). For preview search it was given by (Map with only Positive Bias – Map with no bias) + (Map with Positive and Negative Bias- Map with only Negative Bias), i.e: ($House-Red+Blue-Face$) For preview search the top-down inhibition was given by (Map with only Negative Bias – Map with no Bias) + (Map with Positive and Negative Bias – Map with only Positive Bias), i.e: ($Face-Red+Blue-House$)

Table 1. Map extraction for Single Feature (SF), Conjunction (CJ) and Preview (PV) search.

	SF and CJ Top-Down Excitation	SF and CJ Top-Down Inhibition	PV Top-Down Excitation	PV Top-Down Inhibition
<i>Face</i>	NO	NO	NO	YES
<i>House</i>	YES	NO	YES	NO
<i>Blue</i>	YES	NO	YES	YES
<i>Red</i>	NO	NO	NO	NO

3.2. Comparison of fMRI data with model bold responses

Activation in sSoTS was linked to the human fMRI data by taking into account the delay present in the fMRI bold signal (about 5-9 sec) [21]. To do this, activity in the model was convolved with a haemodynamic response function (HDR) [22-24]. Previous work by Gorchs and Deco [22] simulated the bold response by taking the average pool activity in a given location in the model and convolved this with a Poisson distribution. This result was then compared with bold responses taken from the fMRI data (from the corresponding simulated

region). Furthermore, instead of using the average pool activity the synaptic activity can also be employed. Deco et al. [24] used the synaptic activity from his model and convolved it with the haemodynamic response function suggested by Glover [23]. To compare our theoretical data with the fMRI experimental data we used the average synaptic activity from the pools in the model's feature maps. The comparison took place in two steps. First we compared qualitatively the bold response from the fMRI data with the activation function with top-down inhibition similarly with previous work [22-24]. Then average synaptic pool activity was then directly compared with the observed bold data from Allen et al. [8], using the synaptic activity as regressors for the fMRI analysis.

We note that there was no top-down inhibitory bias applied during conjunction search. However, activity in the same maps was examined in order to provide a baseline with the preview search task. After extracting the activity maps from the model, we averaged over 20 trials for each condition and we took the changing time course of activity reflecting top-down inhibition and top-down excitation activity for each condition. This activity was convolved using an assumed haemodynamic response function [24] to create a time series of predicted bold activity. This time series was then used as a regressor for the fMRI data in the contrasting search conditions.

fMRI analysis was done using FEAT, part of fsl (www.fmrib.ox.ac.uk/fsl). The data were pre-processed as in Allen et al. [8], including correction for head movement, within scan signal intensity normalisation, high pass temporal filtering (to remove slow wave artifacts). The time course for each map in the model was entered as a separate regressor. Positive and negative biases were estimated by combining the regressors for each map as described above. Z (Gaussianised T/F) statistic image were thresholded using clusters determined by $Z > 2.3$ and a (corrected) cluster significance threshold of $P = 0.05$.

4. Results

The behavioural results generated by sSoTS matched the classical findings on single feature, conjunction and preview search [2]. Search slopes were steepest for the conjunction condition ("full set search", 46 ms/item) and shallow in the single feature condition (the half set baseline, 14 ms/item). The search slope was 12 ms/item in the preview condition. The slope of the preview condition increased when a working memory task was added (19 ms/item). See Figure 2.

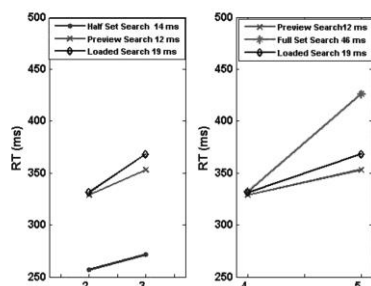


Figure 2: The slopes generated by sSoTS for single feature search (the half set baseline), conjunction search (the full set baseline), standard preview search and preview search with a working memory load (the loaded search condition).

Activity linked to top-down inhibition in the maps was compared with the fMRI

data in precuneus by convolving the activation with the HDR. We found that the HDR for top-down inhibition in the preview condition was increased for preview search compared with conjunction search – a result that reflects the greater salience of the target in preview compared with conjunction search, and not the difficulty of the search tasks (conjunction search being the more difficult). This matches data reported by [8] for the precuneus (see Figure 3).

We then took the time courses of activation reflecting the top-down excitatory and inhibitory activity in sSoTS's feature maps and applied these as regressors to the fMRI data associated with the preview condition reported by Allen et al. [8]. In this study we sought areas where BOLD activity was related to excitatory and inhibitory activity. Allen et al. [8] reported activation in posterior parietal cortex (superior parietal lobe and precuneus) linked to the preview condition. We found a reliable correlation ($p < 0.001$ for all correlations) in right lateral parietal cortex for top-down excitatory activity predicted by sSoTS. In contrast, top-down

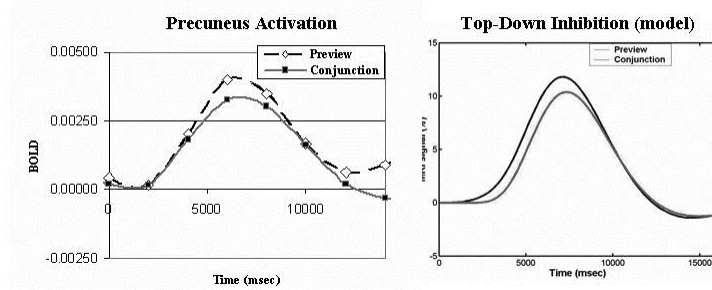


Figure 3: The haemodynamic response found in the precuneus in preview and conjunction search, in Allen et al. [8] and the simulated haemodynamic response in the location map in sSoTS. inhibitory activity in the model was correlated with fMRI activation in the medial precuneus ($Z=50$, Figure 4A). The model-based analysis distinguishes two functionally different operations taking place when observers attempt to ignore the preview and prioritise search to new items [20].

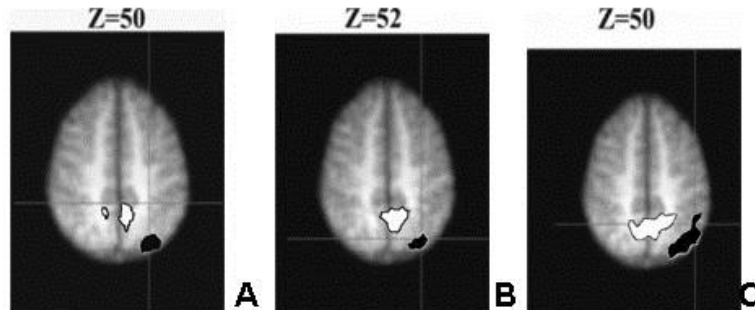


Figure 4: A. Top-down inhibition in the model (white area correspond to maps: (1-4)+(3-2)) was associated with activity the medial precuneus, while top-down excitation in the model (black area

corresponds to maps: (2-4)+(3-1)) was associated with activity in the lateral parietal cortex (right hemisphere). B. Comparisons between preview and conjunction search (the full set baseline). The white regions reflect correlations between (i) top-down inhibitory activity in sSoTS and (ii) increased activation in preview compared with conjunction search. The black regions reflect correlations between (i) top-down excitatory activity in sSoTS and (ii) greater activation in conjunction search compared with preview search. C. Comparisons between the standard preview condition and the condition where preview search was conducted with a working memory load (the loaded search condition) [2]. The white regions reflect correlations between (i) top-down inhibitory activity in sSoTS and (ii) increased activation in standard preview search compared with the loaded search condition. The black regions reflect correlations between (i) top-down excitatory activity in sSoTS and (ii) increased activation in the loaded search condition compared with standard preview search.

We also examined the differences between bold activity in the preview and conjunction search conditions in relation to the activation differences between these conditions apparent in sSoTS (comparing activity in the critical maps in preview and conjunction search). In SSOTS these activation differences are driven by the application of top-down inhibition in preview search. The results showed a reliable correlation between the activation differences in sSoTS and increased activation in the precuneus in preview search compared with the conjunction condition. There was also a correlation between differences in activity in the conjunction and preview conditions in SSOTS and increased activity for the conjunction condition over the preview condition in lateral parietal cortex (see Figure 4B). This may reflect the increased role of excitatory guidance to the target in the conjunction condition.

Finally, we evaluated the differences in activity between the standard preview condition and preview search conducted with a memory load. The differences in activity between these two conditions in sSoTS was correlated with (i) an increase in bold activity in the standard preview compared with the working memory condition in the precuneus, and (ii) an increase in bold activity in the working memory condition compared with the standard preview in lateral parietal cortex (Figure 4C). These results fit with there being reduced inhibitory activity under conditions of working memory load, along with an increased role for top-down activation for the target under the more difficult working memory condition.

5. Conclusions

sSoTS replicated successfully the behavioral results from Allen et al. [8]. Activity in the model linked to top-down excitation and inhibition also correlated with the bold signal in posterior parietal cortex. Prior fMRI studies have demonstrated increased activity in posterior parietal cortex linked to preview search, but differences in excitatory and inhibitory influences have not been

separated. In SSoTS the activation associated with top-down excitation and inhibition can be distinguished. We showed that bold activity in the precuneus was associated with top-down inhibition in the model, while activity in more lateral parietal areas (particularly in the right hemisphere) correlated with top-down excitation in the model. Activation in these two regions also changed across the search conditions in accord with changes in SSoTS. Higher activation in the precuneus in preview search compared with (i) conjunction search and (ii) the working memory condition was correlated with greater inhibitory activity in the model. In contrast, there was increased activity in lateral parietal cortex associated with increased activation in (i) conjunction search and (ii) the working memory condition, compared to standard preview search, linked to increased top-down excitation in SSoTS. These data suggest that top-down inhibition may play a driving role in generating efficient preview search compared with less efficient search conditions (conjunction search and preview search with a working memory load). Top-down activation, on the other hand, appears to play a greater role in inefficient search (conjunction search, preview search with a working memory load) than in efficient preview search. This may reflect the more prolonged search taking place, which enables a greater role for top-down excitation, for the target, to emerge. The analysis demonstrates that the model-based analysis can help to identify the functional role of different brain regions in search, providing a more accurate account of the neural substrates of visual selection.

Finally it should be noted that, relative to the neuronal structures controlling attention and search in the human brain, the sSoTS model is very simplistic. For example, in a more realistic model, the top-down modulation of excitation and inhibition would come from external neurons, whose own operation should vary according to the neurotransmitter functions involved. In addition input coming into the maps should more accurately reflect the properties of neurons in earlier visual areas, there would be topological organization within feature and location maps, and local grouping in addition to global inhibitory or excitatory modulation. It will be both important and interesting to explore the functional consequences of adding in these extra factors. For now, however, the results indicate the utility of even a simple model for pulling apart functionally distinct activations at a neural level.

Acknowledgments

This work was supported by grants from the BBSRC and MRC (UK)

References

1. Mavritsaki, E., D. Heinke, G.W. Humphreys, and G. Deco, *J.Phys.Paris* **100** (2006).
2. Watson, D. and G. Humphreys, *Psych. Rev.* **104** (1997).
3. Humphreys, G.W., D.G. Watson, and P. Joliceour, *J. Exp. Psych.: HPP* **28** (2002).
4. Miller, E.K., *Pre-frontal cortex and the neural basis of executive function. Attention space and Action: Studies in cognitive neuroscience*, ed. G.W. Humphreys, J. Duncan, and A. Treisman (Oxford University Press, 1998).
5. Corbetta, M., J.M. Kincade, J.M. Ollinger, M.P. McAvoy, and G.L. Shulman, *Nat. Neur.* **3**, 3 (2002).
6. Pollmann, S., R. Weidner, G. Humphreys, C. Olivers, K. Muller, and G. Lohmann, *NeuroImage* **18**, (2003).
7. Olivers, C.N.L., S. Smith, P.M. Matthews, and G.W. Humphreys, *Hum. Br.Map.* **24** (2005).
8. Allen, H., G.W. Humphreys, and P.M. Matthews, *J Exp. Psych.: HPP Psychology: Human Perception and Performance* **34**, 2 (2008).
9. Heinke, D. and G.W. Humphreys, *Comp. Vis. Im. Und.* **100**, 1/2 (2005).
10. Deco, G. and J. Zihl, *Visual Cognition* **8**, 1 (2001).
11. Itti, L. and C. Koch, *Vision Research* **40** (2000).
12. Mozer, M.C. and M. Sitton, *Computational modelling of spatial attention*, in *Attention*, ed. Pashler (1998).
13. Deco, G. and E. Rolls, *Journal of Neurophysiology* **94** (2005).
14. Mavritsaki, E., D. Heinke, G. Humphreys, and G. Deco, *Neurocomputing* **70** (2007).
15. Brunel, N. and X. Wang, *J. Comp. Neur.* **11** (2001).
16. Watson, D., G. Humphreys, and C. Olivers, *Tr. Cogn. Sc.* **7**, 4 (2003).
17. Madison, D. and R. Nicoll, *J.Phys.* **345** (1984).
18. Agter, A. and M. Donk, *J. Exp. Psych.:HPP* **31** (2005).
19. Allen, H.A., G.W. Humphreys, and H. Bridge, *Vis. Res.* **47**, 6 (2007).
20. Braithwaite, J.J. and G.W. Humphreys, *Perc. Psychoph.* **65** (2003).
21. Friston, K.J., J. P., and R. Turner, *Hum. Br.Map.* **1** (1994).
22. Gorchs, S. and G. Deco, *NeuroImage* **21** (2004).
23. Glover, G.H., *NeuroImage* **9** (1999).
24. Deco, G., E. Rolls, and B. Horwitz, *Neurocomputing* **58-60** (2004).