

# Statistics, telematic networks and EDI bulletin

1 □ 1996

## Letter from the EBES/EG6 - Statistics Chair

MD6 has changed its name since the last STNE bulletin - we are now called Expert Group 6 - Statistics. This change in name reflects the move of the EDIFACT secretariat to CEN and the integration of EDI standardisation activities in Western Europe under the CEN umbrella. The full identity our group is EBES EG-6. CEN has chosen to rename WE/EB (Western European EDIFACT Board) to EBES (European Board for EDI Standardisation) to reflect the need for this integration of activities.

### Open-EDI

The statistics group has long recognised that there is a need to reflect the results of our harmonisation work in more than one EDI standard. Indeed, we already have a demonstration of the CLASET data model implemented in SGML (Standard Generalised Mark-up Language - also an ISO standard), and so we welcome this change of emphasis. EG-6 has for a long time developed data models to support the functions required by the EDI messages, and so we will see in the future the implementation of some these models in different syntaxes. This shows the strength of a data model because it is syntax independent. It is probable that EG6 will develop an SGML version for GESMES during 1996.

### Genericity

Another aspect of message design which EG-6 has always adopted is the development of generic messages and generic segments. The GESMES

message pioneered the way and this led to many new, but generic, segments appearing in the EDIFACT directory. It will come as no surprise, therefore, to learn that our latest message, RDRMES (raw data reporting message) was designed without the need to ask for any new segments, data elements or changes to the definition or structure of any segments. All that was required was a few new code values. RDRMES will be in the D96A directory and is already in trial use.

### Re-usability

At long last the CLASET data model is now finalised and this will be implemented in both EDIFACT and SGML. It is probable, following an early analysis, that EG-6 can design the EDIFACT version of CLASET without the need to ask for any new segments or data elements - the generic segments designed for GESMES should be sufficient for our needs. EG-6 is hopeful, therefore, that its acceptance

into the directories will not be controversial and we look forward to a swift passage through technical assessment.

### Cyber-meetings

We have cut down on the number of meetings to be held in 1996 to three - this does not mean that the workload is less, it just means that the workload has changed and that we are finding alternative ways of working together: E-mail, Electronic forums, World Wide Webs, etc.

**Philippe Lebaube**  
EBES/EG6 Chair

### Inside this issue

- Latest News since the last issue
- Who is Who in EG6
- Up to date news on each of the working groups
- Workplan for 1995-1997
- Who is using EG6 messages
- Names and contacts
- Calendar of meetings

OFICINA ESTADÍSTICA DE LAS COMUNIDADES EUROPEAS  
 DE EUROPÆISKE FÆLLESKABERS STATISTISKE KONTOR  
 STATISTISCHES AMT DER EUROPÄISCHEN GEMEINSCHAFTEN  
 ΣΤΑΤΙΣΤΙΚΗ ΥΠΗΡΕΣΙΑ ΤΩΝ ΕΥΡΩΠΑΪΚΩΝ ΚΟΙΝΟΤΗΤΩΝ  
 STATISTICAL OFFICE OF THE EUROPEAN COMMUNITIES  
 OFFICE STATISTIQUE DES COMMUNAUTÉS EUROPÉENNES  
 ISTITUTO STATISTICO DELLE COMUNITÀ EUROPEE  
 BUREAU VOOR DE STATISTIEK DER EUROPESE GEMEENSCHAPPEN  
 SERVIÇO DE ESTATÍSTICA DAS COMUNIDADES EUROPEIAS

L-2920 Luxembourg — Tél. 43 01-1 — Télex COMEUR LU 3423  
 B-1049 Bruxelles, rue de la Loi 200 — Tél. 299 11 11

**EBES/Expert Group 6 – Statistics**  
**EEG6 - Statistics**  
**Who is Who**

**Officers**

Chairman:	Philippe Lebaube	Eurostat, LU	+352-4301-34524
Vice-Chairman:	Alan Hewer	CSO, UK	+44-71-2706387
Vice-Chairman:	Rune Gloersen	Statistics Norway, NO	+47-22-864590
Standards Liaison:	François Vuilleumier	Swiss Customs, CH	+41-31-3226523
Secretary:	Jacqueline Jansen	Consultant Eurostat, LU	+352-228593

**Working Group Conveners**

Working Group 1:	Chris J. Nelson	Consultant Eurostat, LU	+352-228593
Working Group 3:	Emile Bruneau	INSEE, FR	+33-1-41175274
Working Group 4:	Jean-Pierre Grandjean	INSEE, FR	+33-1-41176537
Working Group 5:	Marie-Françoise Rivet	French Customs, FR	+33-1-44632901
Working Group 6:	Peter Hofman	De Nederlandsche Bank, NL	+31-20-5243313
Working Group 7:	Klaus-H. Rostek	Bundesministerium für Verkehr	+49-228-3002552
	John Schlösser	CBS, NL	+31-45-706448

***If you want to know more about us, please contact:***

**Address:** Secretariat EEG6  
 c/o Philippe Lebaube  
 Eurostat  
 Jean Monnet Building C3/002A  
 L-2920 Luxembourg

**Phone:** (+352) 4301 34524, (+352) 228593 (secretariat)  
**Fax:** (+352) 4301 32999, (+352) 227 071 (secretariat)  
**X400:** C=BE; A=RTT; P=CEC; O=Eurostat; S=Lebaube; G=Philippe  
**Internet:** philippe.lebaube@eurostat.cec.be

## LATEST NEWS SINCE THE LAST ISSUE

### INSIDE

- I. JRTs in Oxford and Brazil
- II. Security Issues
- III. GESMES Trials: Follow-up
- IV. Questionnaire on EDI Use in the EU
- V. Pilot Project for Transport

### **EDIFACT MEETINGS**

#### ***Joint Rapporteurs' Team meeting (JRT) in Oxford, September 11-15, 1995***

For the Oxford JRT, the working sessions of JM8, the joint meeting Group for Statistics, were attended by 22 delegates coming from 10 different countries and 5 EDIFACT regions. JM8 welcomed for the first time participants from Croatia.

#### **RDRMES**

The EG6 generic message for reporting raw data in response to a questionnaire, was approved for Status 1 by the JTAG and will therefore be published in the D.96A EDIFACT directory.

In addition, the two change requests submitted by EG6 on **data element 3148**, communication number (i.e. length increased up to 512 characters) were also approved, allowing for the accommodation of an X.400

address. This change is an generic improvement for the EDIFACT community, regardless of the sector.

#### **EDIFACT Re-engineering**

The proposal for the re-engineering of EDIFACT including the empowerment of the JRT was discussed again in Oxford. JM8 members from Australia, Pan America and EG6 forwarded their comments before December 1, as requested.

#### **Multi-Format Exchanges (MFE)**

JM8 members attended the MFE meeting. The group decided to change its name to EDIFACT and Associated Objects (EAO). It was agreed to address specific solutions or more general concerns and that solutions might be based on both "packaging" and "cross-referencing".

Some EG6 members also had specific joint meetings with JM4 (Transport) and JM6 (Finance) in order to continue synergy and co-operation.

#### **Demonstration on Security measures**

JM8 (EG6/WG5) made a very successful presentation of its prototype of implementation of security counter-measures in trade statistics messages (using the AUTACK message).

The demonstration was well received by Security experts and less specialized attendees alike.

#### ***Joint Rapporteurs' Team meeting (JRT) in Foz do Iguaçu, Brazil, April 15-19, 1996***

During the Oxford JRT, JM8 members had agreed that JM8 as a group would not convene in Brazil, having no important issues to discuss in April, but rather in Helsinki, in September 1996.

No Australian nor North-American delegations of statisticians were present. Two EG6 representatives of the EG6 WG5 and WG7 attended the JM5 (Customs group) and the JM4 (Transport) working sessions, respectively.

#### **EG6 Meeting in Lisbon, November 23-24, 1995**

The last MD6 meeting of 1995 was hosted by the Instituto Nacional de Estatística (INE) of Portugal.

Because of calendar constraints of their Conveners, Working Groups 3 and 4 did not convene in Lisbon. Working Group 3 had a working session in Luxembourg on November 29 instead.

The election of a new EG6 vice-Chair and a new EG6/WG1 Convener was placed on the agenda of the next EG6 Plenary meeting, on February 2, 1996, in Geneva.

EG6 members should consider the possible re-organisation of EG6. This topic will be discussed during the next EG6 meetings in Geneva and Oslo.

## **EG6 Meeting in Geneva, Jan 31-Feb. 2, 1996**

The 29th meeting took place in Geneva, hosted by the UN/STAT. WG6 and WG7 did not convene.

Mr. Chris Nelson was elected deputy Convener of WG1 for at least the Oslo meeting. A formal Convener would be designated in Oslo or in Brussels.

Mr. Rune Gloersen, EG6 National Representative of Norway, was elected EG6 vice-Chair.

Two main topics were discussed during the EG6 Plenary meeting:

1- the EG6 participation in the IDA conference in Rome, on June 20-21, 1996;

2- the re-organisation of EG6, since it had been realised that after 6 years of existence, the present structures could not meet the new need for more and more joint meetings to tackle common problems.

The two topics were also placed on the agenda of the Oslo meeting.

The majority of the sub-groups (WG1, WG3, WG4) dedicated time to the study of other message Development Groups' messages, such as RECODE, INFENT, REGENT and to the comparison of these messages with the EG6 GESMES, RDRMES and CLASET data models.

## **Awareness Activities and Documentation**

1. The version "**GESMES '95**" of the GESMES Message Implementation Guide was finalised in Lisbon. Its publication is scheduled for 1996.

2. The **demo diskette on the BOPxxx messages**: its translation into the various EU languages should be ready by Mid '96. It is foreseen that a 1,000 copies would be disseminated in 1996.

3. The **EDIBOP Final Report** should be published by Eurostat around July 1996.

4. The **RDRMES message Implementation Guide** should be written up during the first semester of 1996 within the framework of a SERT project.

5. The international versions of the **BOPxxx message Implementation Guides** should be ready by the Summer of '96 and issued as a Eurostat publication.

### **6. Awareness Seminars**

On November 22, an Awareness Session was organised by the Lisbon EDI Awareness Centre, in co-operation with the INE: some 80 people attended from the statistical sector, the banking sector and some Portuguese ports.

It is planned that a similar awareness session will be organised in Brussels, before the EG6 meeting of November '96.

It is also foreseen to organise for the EG6 meetings, and GESMES in particular, a few seminars targeted at 3 types of audience: decision-makers; technicians and software developers.

***The Chairmanship is calling for ideas on the organisation of such seminars.***

## **Changes in the Officers**

### **One resignation**

Mr. Olli Janhunen, the efficient WG1 Convener and supporting EG6 vice-Chair has resigned from both his positions within EG6:

After 27 months in Luxembourg, he has been granted a return ticket to paradise, i.e. his home country, Finland.

However, one does not get rid of EG6 so easily: in September '96, some of us will come to visit him in Helsinki with the excuse of the JRT.

### **One appointment**

Mr. Rune Gloersen, the National Representative of Norway for EG6, was elected EG6 vice-Chair at the Plenary meeting in Geneva.

***Congratulations and Good Luck from all of us, Rune !***

## Other Topics

### SECURITY ISSUES IN EDI

#### *EDI Security prototype for the Intrastat system of collection of trade statistics*

## 1. CONTEXT

Within the framework of the internal market after 1992, Eurostat promotes, through the EDICOM project, to the Member States a computer infrastructure simplifying the processes of data capture, transmission, validation and aggregation of statistical data relating to the trading of goods between Member States. To increase the quality of statistical data processing and data transmission between different partners, one method is to use the Electronic Data Inter-change (EDI), and in particular the EDIFACT standard (ISO standard 9735).

The first results of this project were implemented in the Member States as a technical environment concerning the Intra-Community Trade statistical collection (Intrastat system) around the EDIFACT message CUSDEC/INSTAT (INSTAT subset of the Customs declaration message CUSDEC).

## 2. SECURITY REQUIREMENTS FOR EDI

The competent national administrations (CNA) for statistics collection and the firms Provider of Statistical Information (PSI) require an

EDI system able to provide security and evidence over particular exchanges of the EDIFACT CUSDEC/INSTAT message.

A feasibility study on EDI security in the collection of trade statistics identifies:

- threats,
- associated counter-measures,
- the mechanisms to be implemented,
- the levels of security,
- the implementation of counter-measures and associated counter-measures.

During this study, a prototype on implementation of EDI security was set up. The objectives were to get a better knowledge of:

- EDI security,
- AUTACK message,
- link between EDIFACT translator and EDI security supplier,
- organisational problems related to EDI security.

## 3. PROTOTYPE

The aim was to supply some security counter-measures (Message content integrity, Message origin authentication, non repudiation of origin) by giving the PSI the possibility to :

- compute the digital signature of the CUSDEC/INSTAT message after its generation,
- integrate this digital signature and the EDI security related

parameters into AUTACK message,

- transmit to the CNA the CUSDEC/INSTAT and AUTACK messages, on the CNA side to :
- receive the CUSDEC/INSTAT and AUTACK messages,
- convert the AUTACK message in order to get the digital signature,
- check the digital signature of CUSDEC/INSTAT.

## 4. CONCLUSIONS AND OBJECTIVES

Awaiting parts of version 4 of syntax rules dealing with security (scheduled for 1996), this prototype recognises that organisation of security is very important and has to be studied, the integration of EDI security supplier, EDIFACT translator and IDEP (Intrastat Data Entry Package) has to be followed up, the subset of the AUTACK message used in the Intrastat system and its integration with the CUSDEC/INSTAT message has to be improved.

Sylvie Colas  
Eurostat Consultant

## EC-INTRASTAT

### Estimation of EDI implementation in relation to the EC-INTRASTAT system

The EDI questionnaire was issued to all the 15 Member States in August, 1995. The main reason behind the questionnaire was that it should give an estimation as to degree of EDI in relation to the Intrastat system within each Member State.

The main parts of the EDI estimation were about the number of Intrastat declarations :

- on paper (generated by hand or by a software),
- copied on diskette (on EDIFACT CUSDEC/ INSTAT or on other formats),
- sent by telecommunication (on EDIFACT CUSDEC/INSTAT message or on other formats),

and the different ways of handling the Intrastat declarations by the administration :

- on paper by using keypunching, OCR, or other system,
- on diskettes by disk/fax or other systems,
- by telecommunication by bulletin board, X.400 or other systems.

Other questions were asked to the Member States on general topics and they responded as follows :

- Number of current and estimated EDI users for the next year : the figure is increasing in every country;
- EDI agreement implementation: just implemented in a few Member States:
- EDI security implementation: some counter-measures are already used and some Member States intend to improve this implementation;
- Existing or intending to be implemented EDIFACT messages for trade statistics (E.g. CUSDEC/INSTAT and CUSDEC/EXSTAT, CUSRES/INSRES).
- The CUSDEC/INSTAT message is now broadly implemented, 5 Member States use or intend to use the CUSRES/INSRES and CUSDEC/EXSTAT message.

It was an onerous task for the Member States in the first instance to complete such a questionnaire and the results as returned were not of the quality expected. Nevertheless Eurostat will request similar information on an annual basis, from the Member States.

The detailed estimation is provided in the document: Committee on external trade statistics, production working group, EDICOM Task force, "Results of the EDI questionnaire", Sept. 95, TF EDICOM, DOC TF 76.

Cyril Greene  
Eurostat

## EDI Implementations

### GESMES Trials Task Force and Other Implementation Efforts

#### 1. Task Force meeting

GESMES Trials Task Force held its second plenary meeting and a workshop session the 4th of October 1995 in Luxembourg.

The trials concerning short term indicators are advancing reasonably close to the initial schedules and the STADIUM environment at Eurostat is ready to receive the first trial data flows.

The Task Force accepted with small modifications the Progress Report, Implementation Guide and Memorandum of Understanding proposals presented by the consultants.

After the meeting successful training courses have been arranged in Finland and Norway with several interested participants from outside of the central statistical agencies. By the time this bulletin is published, training courses will have been held also in UK and Italy.

Certain countries have already reached such a level in their EDIFACT and GESMES know-how that they would like to start receiving GESMES data

sets from Eurostat instead of just trialling data flows from member states to Eurostat. Unfortunately this wish cannot be fulfilled for the moment but as soon as possible a GESMES interface will be created into the Eurostat reference environment.

## **2. The Fame User Conference**

This is partly connected to the second spearhead of the Eurostat implementation strategy which tries to activate software developers to take as a serious challenge the advanced features of GESMES to structure multidimensional data sets and to carry metadata within the messages.

For this purpose Eurostat gave two well-received presentations on the GESMES implementation strategies at the International FAME User's Conference in Oslo in September and discussed the possibilities to co-operate in this field since both Eurostat and Statistics Norway are using FAME.

The software is a time series oriented DBMS & analysis package used mainly by the banking sector.

## **3. New requirements**

It is evident that the genericity of GESMES widens its application area outside the traditional EDIFACT translators and, subsequently, converters or drivers to turn GESMES

messages into spreadsheet or common data base storage formats are badly required.

Eurostat is studying all the possibilities to give a push forward to initiate this development work in commercial software houses.

This would result in dual benefits for the statistical sector since GESMES would automatically focus the attention to the metadata handling deficiencies of contemporary software applications.

The message delivered e.g. by the FAME users in the above conference to the developers clearly indicated that these are the problems that have to be addressed to create value added and gain competitive edge on the markets.

## **4. Genericity is a user requirement**

The message from the national trial participants and observers to Eurostat was as clear.

Generic solutions are the only ones that can be accepted in the long run, which means that the Eurostat reception environment must be made to receive not only pre-defined and documented data flows but also messages with ad-hoc structure definitions.

It was also the starting point in GESMES development and, accordingly, easy to accept.

In EDIFACT environment generic solutions are, however, a new phenomenon and seem to require a period of mental adaptation. Rerouting the human synapse connections is not always an easy task and takes time.

## **5. Other trials**

GESMES has been trialled also in the transport statistics and Balance of Payments environments and Eurostat is already receiving "live" GESMES/BOPSTA messages from a number of Central Banks.

These messages are not, yet, routed through the Eurostat electronic data reception centre (STADIUM Server) partly because all central banks do not have E-mail connections, partly due to organisational reasons.

When the STADIUM / GESMES connectivity has been secured after the ongoing GESMES trials, the role of the STADIUM environment in the translation and conversion processes will be clarified.

**Olli Janhunen  
Eurostat**



## EDI for Transport Statistics

### 1. Short overview

This project was launched by Eurostat with the objective of trying to prove the technical feasibility and the advantages of using EDIFACT procedures to facilitate the collection of maritime transport statistics as covered by a project of Council Directive.

The pilot project is conducted by ALCATEL TITN Answare in three EU countries with the participation of five ports (Spain: Barcelona; Netherlands: Rotterdam; France: Rouen, Marseilles, Dunkerque;) and one maritime transport operator, Nedlloyd in the Netherlands

The pilot is made of four phases:

- I. Preliminary study;
- II. Trials;
- III. Documentation and training;
- IV. Generalisation

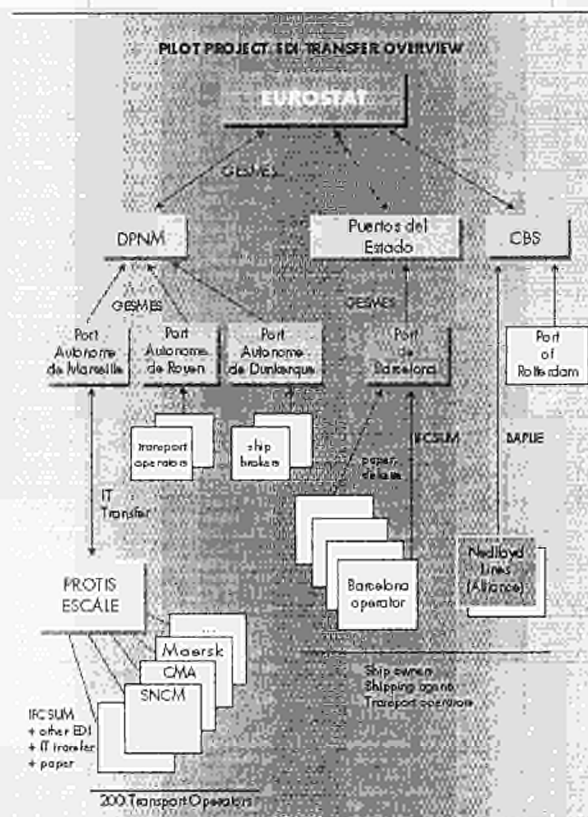
The overall quality requirements and the deliverables are described in the "Quality plan".

### 2. Actual state of the project

After a thorough analysis of data flows at each site, the pilot project is now in its trial phase, i.e. real data transmission through EDIFACT methods from the

ports and maritime transport operators via the NSAs to Eurostat. Beforehand, a detailed "Test plan" has been established together with a document indicating the "Functional and technical specifications".

A meeting with all the partners involved in the trials was held in Paris on 5/6 October 1995, in order to discuss the experiences made, the problems encountered, solutions, etc.



The practical trials have been finalised at four of the five sites. The objective has been to extract the statistical data from EDIFACT messages exchanged between the economic operators for operational purposes.

The EDIFACT messages under consideration were IFCSUM (International forwarding and

consolidation summary message) and BAPLIE (Bayplan / stowage-plan occupied in empty locations message).

The data were then transmitted to the NSAs (Puertos del Estado in Spain; DPNM in France; CBS in the Netherlands) using the GESMES statistical message.

The next stage, i.e. the transmission of the data to Eurostat within the STADIUM framework has still to be achieved.

### 3. Next steps to be taken

As soon as the trials phase is concluded (in November) a "Synthesis report" will be written.

On the basis of the results, recommendations will be elaborated for a generalisation of applications throughout Europe and first ideas formulated for similar experiences on other modes of transport.

Awareness seminars will be organised, for which relevant documentation will be provided.

An extension of this pilot is foreseen in 1996, in order to consolidate the experience gained and to include more countries / partners. Moreover, a better synergy with other EDI projects currently underway shall be achieved.

**Annette Diebel**  
Eurostat Consultant



# EBES/EG6 WORKPLAN

1996 - 1998

## WG1: Aggregated Statistics

GESMES will be documented, promoted and implemented. More profiles will be defined.

REQARR is targeted for:  
Status 0

September 1997

## WG3: Exchange of Classifications

CLASET is targeted for:

SGML:

Document Type Definition June 1996

Full version of data model December 1996

EDIFACT:

Status 1

September 1997

## WG4: Questionnaire Data and Raw data Collection

RDRMES, a Joint Development between the Western European and Pan American regions, will be documented, promoted and implemented.

## WG5: External Trade Statistics

This group is developing subsets of existing Customs messages and writing the corresponding MIGs.

The final CUSDEC/INSTAT and CUSRES/INSRES MIGS - as well as the new draft version of the CUSDEC/EXSTAT MIG based on the D.95.B directory - are scheduled for March 1996.

The final version of CUSDEC/EXSTAT is scheduled for September 1996.

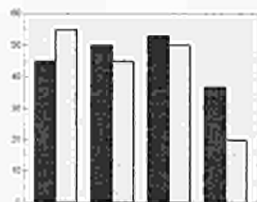
## WG6: Balance of Payments Statistics

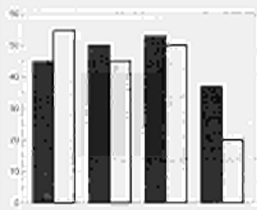
BOPBNK, BOPCUS, BOPDIR, BOPINF as well as the GESMES/BOPSTA subset will be documented, promoted, trialed and implemented.

In co-operation with WG1, a subset of GESMES is envisaged to transmit monetary data other than Balance of Payments.

## WG7: Transport Statistics

This EG6 sectorial sub-group works in close co-operation with EG2 (Transport). It is studying existing operational EG2 messages to see which ones are appropriate to convey transport statistics with a particular attention to minimizing the burden for the declarants.





## EBES/EG6 - Statistics

### Working Group 1

#### *Aggregated Statistics*

WG1 is concerned with the exchange of multidimensional statistical tables and time series. The type of data exchanged in this way is many and varied: population, farming, transportation, economic activity, etc. The principal organisations involved in the exchange of these data are the national statistical authorities, Central Banks, and those organisations playing a role on an international level, such as the UN/ECE, OECD, Eurostat, EMI and the IMF. However, as work has progressed, many private organisations have expressed a keen interest in the activity of WG1.

The result of this work is GESMES – Generic Statistical Message – which reached Status 1 in March 1995. GESMES supports the exchange of statistical figures together with its associated metadata (e.g. footnotes, methodological notes, data set structures).

A number of organisations operating at the international level have implemented GESMES to collect a wide variety of statistical data:

- From National Statistical Administrations to Eurostat:
  - ⇒ product data
  - ⇒ transportation data
  - ⇒ industrial indicators
- From Central Banks to Eurostat:
  - ⇒ Balance of Payment data
- From transition countries to the UN/ECE:
  - ⇒ a wide variety of macro economic data
- From economic operators to the national Statistical Administrations:
  - ⇒ transport data from port authorities
  - ⇒ transport data from shipping lines

A User Guide, GESMES 95, is available which is targeted as the blueprint from which all sectorial GESMES user guides will be developed.

This guide explains the architecture of GESMES, defines the rules for the use of all the data structures in the message, and contains many examples of its use.

For users wishing a short introduction to GESMES, the “GESMES - Quick Results” booklet has been developed. With the aid of this booklet, it is possible to understand and use many of the more popular features of GESMES, without the need to understand the more complex features of the message.

The appeal of GESMES is not confined to statistical organisations, any organisation which has a need to exchange data of a tabular, multi-dimensional, or time related (time series) nature will find GESMES useful.

GESMES can also be used as a request message for data.

With the two functions of request and dissemination it is possible to automate fully the exchange of tabular, multi-dimensional and time series data between organisations, and it is hoped that the GESMES facilities will be integrated into commercial application systems in the future.

### Working Group 3

#### *Statistical Classification*

The primary aim of WG3 is to define structured EDI messages to exchange the structure and contents of classifications (e.g. nomenclature, code lists, directories, ...), and their relationships.

In addition to this WG3 aims to:

- ease the use of classifications by economic operators, maintenance agencies and international bodies (e.g. National Standards Institutes, National Statistical Administrations, Customs Authorities, professional federations, Chambers of Commerce, Eurostat, OECD, UN/STAT, etc.).
- promote the use of official classifications, in particular statistical classifications, in EDI messages.

A specific side of this work is to ensure that the multi-lingual aspects of the classifications and the use of different character sets within the same message are catered for, including the handling of textual components.

For instance, solutions are being analysed allowing for the cross-referencing between EDIFACT-oriented message parts and SGML (Standard Generalized Mark-up Language – ISO-9069) oriented message parts. EG6/WG3 is interested in the EDIFACT studies on multi-format exchanges (now called EDIFACT and Associated Objects) and in Open EDI in general.

Following the requirements of exchanging classifications during the different phases of their life cycle (e.g. compilation, consultation, dissemination), WG3 has conceived an exchange data model and one structured EDIFACT message:

CLASET:

to request or transfer a selected set of information elements relating to a classification and their relationships. CLASET now includes the features of CLAREQ which was initially designed to request information relating to a classification;

Status 0 was reached in Spring 1993. Status 1 is targeted for September 1997.

In parallel, an SGML version of the data model will be finalised by the end of 1996. The Document Type Definitions are scheduled for Spring 1996.

A future activity of the group is to extend its work into the development of messages allowing the exchange of other metadata (e.g. statistical unit, definition, concept, methodology).

The group will build on the output from other groups working in this area (e.g. DSIS, METIS and the DOSIS Research Programme).



## EBES/EG6 - Statistics

### Working Group 4

#### *Collecting Raw Statistics*

WG4 is concerned with investigating new ways of collecting raw statistical data.

In order to reduce the burden of compiling statistical information on individual organisations, the vital job of statistics gathering needs to be integrated into the information systems currently being used on a day to day basis by the economic operators (e.g. payroll, accounting, production, distribution).

Ideally, this integration should support both regular surveys and ad hoc enquiries for ALL declarative purposes (statistics, customs, trade associations etc.).

The target public for such messages includes the NSAs, the economic operators and the professional bodies representing the economic operators (e.g. the professional unions and chambers of commerce).

The objectives of this group represent the most challenging work for EG6. The technical aspects of the work are concerned with the development of EDI messages which are used for declarative purposes; one such type of message is a generic message which supports the responses to a questionnaire.

Initiatives in this field were taken both in America and in Europe:

- In 1993 the US Bureau of the Census submitted a new EDIFACT message for the collection of raw data (RDRMES);
- in early 1994, WG4 started developing a general data model for questionnaire data.

During the April '94 JRT in Ottawa, it appeared that the two projects could easily converge. A new version of RDRMES, which meets the requirements of Europe and North-America, was finalised during the September '94 JRT in Vienna.

RDRMES was granted Status 1 in September 1995 and will be published in the EDIFACT D96.A directory, in March 1996.

The message has been successfully trialed in 1995 in a number of pilots: VAT declaration in the Netherlands and Belgium, Statistical returns from the UK Steel Industry (ECSC framework).

In 1996, most efforts will be dedicated to writing-up a RDRMES Message Implementation Guide and carrying out pilot projects.

The UK Tax Administration has begun a pilot project for the collection of tax returns using RDRMES as an alternative to the paper declaration.



## EBES/EG6 - Statistics

### Working Group 5

#### *External Trade Statistics*

WG5 is concentrating on the procedures for collecting and disseminating statistical information in the field of international trade. For the EEA countries such a solution will create a mechanism for collecting these statistics in an open trading environment. The target public for the messages developed by the group are the NSAs, the national or regional collection centres, and the economic operators who are direct declarants.

WG5 works in close collaboration with EBES/EG3, the Customs Message Development Group responsible for the management of customs messages, and with the Statistical Committee for External Trade.

Three subsets of messages have been developed so far:-

#### INSTAT:

For the declaration of intra-Community trade. This is a subset of the Customs declaration message, CUSDEC, and CUSDEC/INSTAT has been part of the EC INTRASTAT regulation since the opening of the Single European Market in 1993. The publication of the new MIG is scheduled for March '96 (S.93A and 92.1 directories).

#### EXSTAT:

for the declaration of extra-Community trade, which is also a subset of the Customs declaration message, CUSDEC. The publication of its MIG is scheduled for September '96.

#### INSRES:

the response message to INSTAT, implemented as a subset of the Customs response message CUSRES. The publication of the new MIG is scheduled for March '96 (S.93A and 92.1 directories).

#### STATEM:

for the results of intra- and extra-Community trade sent by the Competent National Administrations for compiling trade statistics to Eurostat. A feasibility study is under progress for getting the advantages and disadvantages of having STATEM implemented as a sub-set of GESMES or CUSDEC.

#### CLASET/CN8

an EDIFACT message for exchanging the changes of the Combined Nomenclature (CN8) by Eurostat to the CNAs is being studied as a subset of CLASET.

#### WG5 is also involved in Security and legal issues.

In 1995, the group created a prototype for the implementation of security counter-measures for EDIFACT messages in the field of statistics. A conference and a demo were successfully held at the Oxford JRT in September 1995 and in front of the World Customs Organisation in Brussels, at the beginning of 1996.



## EBES/EG6 - Statistics

### Working Group 6

#### *Balance of Payments Statistics*

The aim of WG6 is to design the messages to support the compilation of the Balance of Payments (BOP).

The partners in this project will ultimately be the enterprises (direct declarants), the corporate banks, the Central Banks and the (inter)national statistical institutes.

WG6 has close working relationships with the EDIFACT Balance of Payments Task Force, one of the task forces set up under the Committee on Financial, Monetary and Balance of Payments Statistics.

This Task Force is responsible for the development of a strategy for the collection of BOP statistics in terms of EDIFACT while WG6 is in charge of the standardisation process necessary to support this strategy. Since end 1993, the EDIBOP project obtained financial support from the EU/TEDIS programme.

WG6 has developed five new messages:

- BOPINF** – the beneficiary informs its bank of the nature of a transaction.
- BOPCUS** – a commercial bank reports to the central bank the debit and credit transactions.
- BOPBNK** – a commercial bank reports to the central bank its own transactions and portfolio transactions.
- BOPDIR** – an aggregated declaration sent by an individual enterprise to a central bank or national statistical office .
- BOPSTA** – aggregated BOP information is sent by the collection agency to an international statistical organisation. BOPSTA is implemented a subset of GESMES/ECOSER (based on the Status 1 version reached in March 1995).

The BOPxxx messages reached Status 1 in September 1994 and in the IMF Guide for Balance of Payments Reporting, one chapter is dedicated to the EG6 BOPxxx messages..

For BOPSTA, trials have been carried out in most countries of the EU, with Eurostat, the OECD, the International Monetary Fund, the European Monetary Institute and the Bank of International Settlements. These international organisations, as well as the remaining Member States and even Japan will be involved in more pilot operations during 1996.

France, Finland and the Netherlands participated in pilots for BOPDIR, BOPCUS and BOPBNK. More trials in other countries are planned for BOPDIR and BOPBNK and France should start testing BOPINF soon.

A further part of the strategy was to integrate the statistical reporting requirements for BOP data into the electronic payment order information exchanged between enterprises and corporate banks. Thanks to the close collaboration between EG6 and EG4, the message development group responsible for financial messages, in 1993, the EG6 change requests were accommodated by EG4 into many of their messages. These restructured messages have been granted Status 1 in 1995.

The group is now studying the potential for the harmonisation of the flow of other financial statistical information between the Central Banks and the NSAs (e.g. investments, loans etc.) in support of European Monetary Union. Another subset of GESMES is under consideration.





## **EBES/EG6 - Statistics**

### **Working Group 7**

#### *Transport Statistics*

The main goal of WG7 is to find ways for the collection and dissemination of transport statistics by means of EDI. It was launched in November 1993 and the group indicated immediately its intention to work in close co-operation with EBES/EG2, the Message Development Group responsible for transport messages.

Maritime transport has been set as its first priority, considering the needs stemming from the proposed maritime transport statistics directive (adopted on December 8, 1995).

WG7 has identified the minimum statistical requirements in the field of maritime transport, which may need to be augmented by additional requirements from NSAs.

The group immediately addressed itself to the survey of the messages already existing – in particular those of EG2 and EG3 – in order to select those of interest for WG7 and to undertake their thorough analysis concerning the coverage of the necessary statistical information.

The group decided to work on a set of messages (already existing or under development) available for EDIFACT users within the European port community. In this context, a pilot project covering a few ports and economic operators in three Member States (France, Netherlands & Spain) was carried out during 1995.

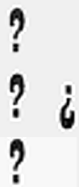
A new pilot project is foreseen for 1996 aiming at the consolidation of the experience achieved so far, and at the extension to other Member States.

First fact-finding studies in the field of air and road transport are underway

## **EBES/EG6 Statistics**

### **Future Working Groups**

New working groups will be set up as the need arises to support well identified projects with clear objectives. These needs may materialise from legislation (e.g. EU regulations), new data collection requirements or the desire to implement a less costly mechanism for the collection or dissemination of current statistical information.



**List of EBES/EG6 Messages**  
Countries using them, testing them or contributing to their development

MESSAGES	Status	AT	BE	CH	DE	DK	FI	FR	GR	IE	IT	LU	NL	NO	PT	ES	SE	UK	Eurostat
GESMES/PRODCOM	1		☞		☞	☞		☞	☞	☞	☞	☞	☞	☞	☞		☞	☞	☞
GESMES/ECOSER	1						☞				☞			☞				☞	☞
GESMES for transport	1							☞					☞		☞	☞			☞
GESMES (other uses)	1				☞		☞						☞				☞	☞	
GESMES/BOPSTA	1	☞	☞		☞	☞	☞	☞	☞	☞	☞		☞	☞	☞	☞	☞	☞	☞
BOPBNK	1	☞	☞		☞	☞	☞	☞			☞		☞			☞		☞	☞
BOPCUS	1	☞	☞		☞	☞	☞	☞			☞		☞			☞		☞	☞
BOPDIR	1	☞	☞		☞	☞	☞	☞			☞		☞	☞	☞	☞		☞	☞
BOPINF	1	☞	☞		☞	☞	☞	☞			☞		☞			☞		☞	☞
CLASET	0			☞			☞	☞									☞		☞
CUSDEC/INSTAT	2	☞	☞	☞	☞	☞	☞	☞	☞	☞	☞	☞	☞	☞	☞	☞	☞	☞	☞
CUSDEC/EXSTAT	2	☞	☞	☞				☞				☞	☞					☞	☞
CUSRES/INSRES	2	☞	☞	☞				☞				☞	☞					☞	☞
RDRMES	1		☞					☞					☞	☞				☞	☞

**Legend:**

- ☞ = *used in production*
- ☞ = *Tests and/or pilot projects in progress*
- ☞ = *Pilot project starting soon*
- ☞ = *Participant in the writing up of the specifications*
- ☞ = *Organisation consulted during development*

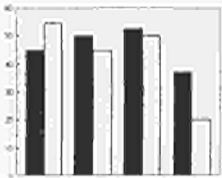
## List of EBES/EG6 Messages

Non-European organisations using them, testing them or contributing to their development

MESSAGES	Status	Eurostat	UN/ECE	IMF	OECD	EMI	BIS	US BoC	US BoLS	STAT CAN	AUS ABS
CLASET	0	☞	☎								
GESMES/ECOSER	1	☞	☎		📖						
GESMES/BOPSTA	1										
Austria		☞		☎		☞					
Belgium		☎		☎	☎	☞	☎				
Canada				☞							
Denmark		☎			☎						
Finland		☎		☎	☞	☞					
France		☎		☎	☎	☞	☎				
Greece		☎									
Germany		☎									
Ireland		☎									
Italy		☎			☎	☎	☎				
Japan		☎		☎							
Netherlands		☎									
Norway		☎									
Portugal		☎		☎	☎	☎	☎				
Spain		☎		☎	☎	☞	☎				
Sweden		☎									
United Kingdom		☎									
RDRMES	1	☞						📖	📖	📖	☎

### ACRONYMS

**ABS:** Australian Bureau of Statistics  
**BIS:** Bank of International Settlements  
**BoC:** Bureau of the Census  
**BoLS:** Bureau of Labor Statistics  
**EMI:** European Monetary Institute  
**IMF:** International Monetary Fund  
**STATCAN:** Statistics Canada  
**UN/ECE:** United Nations/Economic Commission for Europe



## EBES/EG6 Message Implementation Guides Available

### CUSDEC/INSTAT (in English, French and German)

INSTAT Subset of CUSDEC User Guide, Eurostat, Luxbg, March, 1994  
ISBN 42-825-7373-7  
New official version foreseen for March 1996

### CUSDEC/EXSTAT (in English, French and German)

EXSTAT Subset of CUSDEC User Guide, Eurostat, Luxbg, Sept., 1994 (Draft)  
New draft version foreseen for March 1996

### CUSRES/INSRES (Response to INSTAT) (in English, French and German)

INSRES Subset of CUSRES User Guide, Eurostat, Luxbg, June, 1994 (Draft)  
New official version foreseen for March 1996

### GESMES (in English)

GESMES 95 Guidance to users, Eurostat, Luxembourg, March, 1996  
GESMES 95 Reference Guide, Eurostat, Luxembourg, March, 1996  
GESMES "Quick Results", Eurostat, 1995

### GESMES/ECOSER (in English)

GESMES Implementation Guidelines, Eurostat, Luxbg, 1995  
ISBN 92-827-0137-9

### GESMES/PRODCOM (in English)

PRODCOM Subset of GESMES User Guide, Eurostat, Luxbg, 1994 (Rev. 1)

### GESMES/TRANSPORT STATISTICS (in English)

GESMES subset User Guide for Transport Statistics, Eurostat, Luxbg, 1995 (Draft)

### GESMES/BOPSTA (in English)

BOPSTA Subset of GESMES Guide to the User, Eurostat, Luxbg, 1994 (Draft)  
National versions and an international version.

### BOPxxx Messages

Various national versions of the Message Implementation Guides (MIGs) for the Balance of Payments messages are available for most EU countries:

The Group is presently working on international versions of their MIGs. They hope to see them published by Eurostat during the second half of 1996.

## GLOSSARY

<b>DOSIS</b>	Development Of Statistical Information Systems – Eurostat initiative
<b>DSIS</b>	Distributed Statistical Information Services – Eurostat initiative
<b>EBES</b>	European Board for EDI Standardisation - This Western European EDI authority placed under the umbrella of CEN (Comité Européen de Normalisation) replaces the WE/EB (Western European EDIFACT Board)
<b>EDICOM</b>	EDI for COMmerce – Eurostat initiative
<b>EG</b>	Sectorial Expert Group – These groups are presently 12. They replace the former Message Developments Groups (MD's) EG6 is the 6th group, in charge of EDI for the statistical sector. EG's are regional and Western Europe specific – When they meet inter-regionally (during <i>JRTs</i> ), they become <i>JMs</i> ( <i>Joint Meetings</i> ).
<b>JM8</b>	International Joint Meeting Group dealing with Statistics during <i>JRTs</i> .
<b>JRT</b>	Joint Rapporteurs' Team Meeting These International meetings gather all EDIFACT <i>regions</i> and all Development Groups. They traditionally take place twice a year: in September, in the Western Europe, region in April, in another EDIFACT region
<b>METIS</b>	Metadata Information System – UN/ECE Statistical Division
<b>MIG</b>	Message Implementation Guide
<b>NSA</b>	National Statistical Administration
<b>Region</b>	In EDIFACT terminology, vast geographical areas, roughly corresponding to continents. There are 6 EDIFACT regions: Africa, Asia, Australia/New Zealand, Central & Eastern Europe, Pan-America and Western Europe
<b>SERT</b>	Business Statistics and Telematic Networks - Eurostat initiative
<b>Status</b>	The 3 levels (or stages) of the EDIFACT Messages: Status 0: Message for information only Status 1: Draft Message – for trials Status 2: Standard Message – recommended for general implementation WP.4 is envisaging to suppress Status 2 and keep only one status “for implementation”.
<b>TEDIS</b>	Trade EDI Systems – CEC/DGIII programme
<b>UN/ECE</b>	United Nations Economic Commission for Europe
<b>UN/EDIFACT</b>	EDI For Administration, Commerce and Transport – UN Standard
<b>WP.4</b>	Working Party on Facilitation of International Trade Procedures, within the UN/ECE

<b>EEG6</b> <b>National and International Representatives</b>
--

### National Representatives

Austria	Mr. A. Petz	Austrian Statistical Office	+43-1-71128-7558
Belgium	Mr. W. Janssens	National Statistical Institute of Belgium	+32-2-5486500
Denmark	Mr. L.E. Gewalli	Danmarks Statistik	+45-3-9173156
Finland	Mr. M.Saijets	Statistics Finland	+358-0-17342404
France	Mr. J.P. Grandjean	INSEE	+33-1-41176537
Germany	Mr. D. Sarreither	Statistisches Bundesamt	+49-611-752040
Greece	Pr. D. Athanasopoulos	National Statistical Service of Greece	+30-1-3249-491
Iceland	Ms. S. Helgadottir	Statistics Iceland	+354-1-609828
Ireland	Mr. D. Jennings	Central Statistics Office	+353-1-6767531
Italy	Ms. S. Macchia	ISTAT	+39-6-46733201
Luxembourg	Mr. G. Schuller	STATEC	+352-4784271
Netherlands	Mr. B. Resing	CBS	+31-45-706757
Norway	Mr R. Gloersen	Statistics Norway, NO	+47-22-864590
Portugal	Mr. Aquiles De Oliveira	Instituto Nacional de Estatistica	+351-1-8470050
Spain	Mr. P. Diaz Munoz	Instituto Nacional de Estadistica	+34-1-5839301
Sweden	Mr. E. Malmborg	Statistics Sweden	+46-8-7834027
Switzerland	Mr. B. Hulliger	Office Fédéral de la Statistique	+41-31-3236015
United Kingdom	Mr. R. Pape	UK CSO	+44-171-2706399

### Representatives from International Organisations

OECD	Mr. G. Salou	OECD, Paris	+33-1-45248846
UN/ECE	Ms. J. Meliskova	UN/ECE Statistical Division, Geneva	+41-22-9174150
UN/STAT	Mr. B. Lancourt	UN Statistics Office , New York	+1-212-963-4542
EFTA	Mr. J. Byfuglien	EFTA Secretariat at Eurostat, Luxembourg	+352-4301-33521
ISO	Ms. S. Clivio	ISO Central Secretariat, Geneva	+41-22-7490111
EBES	Mr. A. Dechamps	CEN, Brussels	+32-2-550 0867

### Contacts in Other Rapporteur Regions

Australia	Mr. B. Pink	Australian Bureau of Statistics	+61-6-2525139
Canada	Mr. L. Hill	Statistics Canada	+1-613-9514612
Japan	Mr. S. Kawasaki	Statistics Center	+81-3-52731138
Poland	Mr. J. Olenski	Central Statistical Office	+48-22-254896
United States	Ms. C. Ambler	US Bureau of the Census	+1-301-457 2668
United States	Mr. R. Clayton	US Bureau of Labor Statistics	+1-202-606-6520





## Acknowledgments

- ❖ The EBES/EG6 - Statistics activities are widely sponsored by the European Community programme IDA - Interchange of Data between Administrations
- ❖ In addition, we wish to thank the members of the various European statistical organisations who dedicate time and efforts to participate in the EG6 - Statistics activities, meetings and in the publication of this STNE bulletin.

## Calendar of Meetings for 1996

### **Eurostat "Telematic Networks" task force meetings**

March 18-20	Luxembourg
October 7-9	Luxembourg

### **EG6 Working Sessions and Plenary Meetings**

January 31-February 2	Geneva
May 28-29	Oslo
November 6-8	Brussels
EG6/WG7 extra meeting: April 25-26	Valencia

### **Joint Rapporteur Teams Meetings**

April 15-19	Foz do Iguacu (Brazil) **
September 9-13	Helsinki
April 25-30	Singapore

\*\* JM8 (Statistics) is not intending to convene in Brazil

### **Other EG6-related Meetings**

#### *IDA Conference*

June 20-21	Rome
------------	------

#### *GESMES Trials Task Force 3rd meeting*

March 18	Luxembourg
----------	------------

BELGIQUE / BELGIË

**Moniteur belge/  
Belgisch Staatsblad**  
Rue de Louvain 42/Leuvenseweg 42  
B-1000 Bruxelles/B-1000 Brussel  
Tél. (02) 512 00 26  
Fax (02) 511 01 84

**Jean De Lannoy**  
Avenue du Roi 202/Koningslaan 202  
B-1060 Bruxelles/B-1060 Brussel  
Tél. (02) 538 51 69  
Fax (02) 538 08 41

Autres distributeurs/  
Overige verkooppunten:

**Librairie européenne/  
Europese boekhandel**  
Rue de la Loi 244/Wetstraat 244  
B-1040 Bruxelles/B-1040 Brussel  
Tél. (02) 231 04 35  
Fax (02) 735 08 60

Document delivery:

**Credoc**  
Rue de la Montagne 34/Bergstraat 34  
Boite 11/Bus 11  
B-1000 Bruxelles/B-1000 Brussel  
Tél. (02) 511 69 41  
Fax (02) 513 31 95

DANMARK

**J. H. Schultz Information A/S**  
Herstedvang 10-12  
DK-2620 Albertslund  
Til. 43 63 23 00  
Fax (Sales) 43 63 19 69  
Fax (Management) 43 63 19 49

DEUTSCHLAND

**Bundesanzeiger Verlag**  
Postfach 10 05 34  
D-50445 Köln  
Tel. (02 21) 20 29-0  
Fax (02 21) 2 02 92 78

GREECE/ΕΛΛΑΔΑ

**G.C. Eleftheroudakis SA**  
International Bookstore  
Nikis Street 4  
GR-10563 Athens  
Tel. (01) 322 63 23  
Fax 323 98 21

ESPAÑA

**Mundi-Prensa Libros, SA**  
Castelló, 37  
E-28001 Madrid  
Tel. (91) 431 33 99 (Libros)  
431 32 22 (Suscripciones)  
435 36 37 (Dirección)  
Fax (91) 575 39 98

**Boletín Oficial del Estado**

Trafalgar, 27-29  
E-28071 Madrid  
Tel. (91) 538 22 95  
Fax (91) 538 23 49

Sucursal:

**Librería Internacional AEDOS**  
Consejo de Ciento, 391  
E-08009 Barcelona  
Tel. (93) 488 34 92  
Fax (93) 487 76 59

**Librería de la Generalitat  
de Catalunya**

Rambla dels Estudis, 118 (Palau Moja)  
E-08002 Barcelona  
Tel. (93) 302 68 35  
Tel. (93) 302 64 62  
Fax (93) 302 12 99

FRANCE

**Journal officiel  
Service des publications  
des Communautés européennes**

26, rue Desaix  
F-75727 Paris Cedex 15  
Tél. (1) 40 58 77 01/31  
Fax (1) 40 58 77 00

IRELAND

**Government Supplies Agency**  
4-5 Harcourt Road  
Dublin 2  
Tel. (1) 66 13 111  
Fax (1) 47 52 760

ITALIA

**Licosa SpA**  
Via Duca di Calabria 1/1  
Casella postale 552  
I-50125 Firenze  
Tel. (055) 64 54 15  
Fax 64 12 57

GRAND-DUCHÉ DE LUXEMBOURG

**Messageries du livre**  
5, rue Raiffeisen  
L-2411 Luxembourg  
Tél. 40 10 20  
Fax 49 06 61

NEDERLAND

**SDU Servicecentrum Uitgeverijen**  
Postbus 20014  
2500 EA 's-Gravenhage  
Tel. (070) 37 89 880  
Fax (070) 37 89 783

ÖSTERREICH

**Manz'sche Verlags-  
und Universitätsbuchhandlung**  
Kohlmarkt 16  
A-1014 Wien  
Tel. (1) 531 610  
Fax (1) 531 61-181

Document delivery:

**Wirtschaftskammer**  
Wiedner Hauptstraße  
A-1045 Wien  
Tel. (0222) 50105-4356  
Fax (0222) 50206-297

PORTUGAL

**Imprensa Nacional — Casa da Moeda, EP**  
Rua Marquês Sá da Bandeira, 16-A  
P-1099 Lisboa Codex  
Tel. (01) 353 03 99  
Fax (01) 353 02 94/384 01 32

**Distribuidora de Livros  
Bertrand, Ld.<sup>a</sup>**

**Grupo Bertrand, SA**  
Rua das Terras dos Vales, 4-A  
Apartado 37  
P-2700 Amadora Codex  
Tel. (01) 49 59 050  
Fax 49 60 255

SUOMI/FINLAND

**Akateeminen Kirjakauppa**  
Akademiska Bokhandeln  
Pohjoisesplanadi 39 / Norra esplanaden 39  
PL / PB 128  
FIN-00101 Helsinki / Helsingfors  
Tel. (90) 121 4322  
Fax (90) 121 44 35

SVERIGE

**BTJ AB**  
Traktorvägen 11  
Box 200  
S-221 00 Lund  
Tel. (046) 18 00 00  
Fax (046) 18 01 25

UNITED KINGDOM

**HMSO Books (Agency section)**  
HMSO Publications Centre  
51 Nine Elms Lane  
London SW8 5DR  
Tel. (0171) 873 9090  
Fax (0171) 873 8463

ICELAND

**BOKABUD  
LARUSAR BLÖNDAL**  
Skólavörðustíg, 2  
IS-101 Reykjavik  
Tel. 551 56 50  
Fax 552 55 60

NORGE

**NIC Info a/s**  
Boks 6512 Etterstad  
0606 Oslo  
Tel. (22) 57 33 34  
Fax (22) 68 19 01

SCHWEIZ/SUISSE/SVIZZERA

**OSEC**  
Stampfenbachstraße 85  
CH-8035 Zürich  
Tel. (01) 365 54 49  
Fax (01) 365 54 11

BÄLGARIJA

**Euopress Klassica BK Ltd**  
66, bd Vitosha  
BG-1463 Sofia  
Tel./Fax (2) 52 74 75

ČESKÁ REPUBLIKA

**NIS ČR**  
Havelkova 22  
CZ-130 00 Praha 3  
Tel./Fax (2) 24 22 94 33

HRVATSKA

**Mediatrade**  
P. Hatza 1  
HR-4100 Zagreb  
Tel./Fax (041) 43 03 92

MAGYARORSZÁG

**Euro-Info-Service**  
Európá Ház  
Margitsziget  
H-1138 Budapest  
Tel./Fax (1) 111 60 61, (1) 111 62 16

POLSKA

**Business Foundation**  
ul. Krucza 38/42  
PL-00-512 Warszawa  
Tel. (2) 621 99 93, 628 28 82  
International Fax&Phone (0-39) 12 00 77

ROMÂNIA

**Euromedia**  
65, Strada Dionisie Lupu  
RO-70184 Bucuresti  
Tel./Fax 1-31 29 646

RUSSIA

**CCEC**  
9,60-Ietiya Oktyabrya Avenue  
117312 Moscow  
Tel./Fax (095) 135 52 27

SLOVAKIA

**Slovak Technical  
Library**  
Nám. slobody 19  
SLO-812 23 Bratislava 1  
Tel. (7) 52 204 52  
Fax (7) 52 957 85

CYPRUS

**Cyprus Chamber of Commerce  
and Industry**  
Chamber Building  
38 Grivas Dhigenis Ave  
3 Deligiorgis Street  
PO Box 1455  
Nicosia  
Tel. (2) 44 95 00, 46 23 12  
Fax (2) 36 10 44

MALTA

**Miller Distributors Ltd**  
PO Box 25  
Malta International Airport LQA 05 Malta  
Tel. 66 44 88  
Fax 67 67 99

TÜRKIYE

**Pres AS**  
Dünya Infotel  
TR-80050 Tünel-Istanbul  
Tel. (1) 251 91 90/251 96 96  
Fax (1) 251 91 97

ISRAEL

**Roy International**  
17, Shimon Hatarssi Street  
P.O.B. 13056  
61130 Tel Aviv  
Tel. (3) 546 14 23  
Fax (3) 546 14 42

Sub-agent for the Palestinian Authority:

**INDEX Information Services**  
PO Box 19502  
Jerusalem  
Tel. (2) 27 16 34  
Fax (2) 27 12 19

EGYPT/  
MIDDLE EAST

**Middle East Observer**  
41 Sherif St.  
Cairo  
Tel/Fax (2) 393 97 32

UNITED STATES OF AMERICA/  
CANADA

**UNIPUB**  
4611-F Assembly Drive  
Lanham, MD 20706-4391  
Tel. Toll Free (800) 274 48 88  
Fax (301) 459 00 56

CANADA

Subscriptions only  
Uniquement abonnements

**Renouf Publishing Co. Ltd**  
1294 Algoma Road  
Ottawa, Ontario K1B 3W8  
Tel. (613) 741 43 33  
Fax (613) 741 54 39

AUSTRALIA

**Hunter Publications**  
58A Gipps Street  
Collingwood  
Victoria 3066  
Tel. (3) 9417 53 61  
Fax (3) 9419 71 54

JAPAN

**Procurement Services Int. (PSI-Japan)**

Kyoku Dome Postal Code 102  
Tokyo Kojimachi Post Office  
Tel. (03) 32 34 69 21  
Fax (03) 32 34 69 15

Sub-agent:

**Kinokuniya Company Ltd  
Journal Department**  
PO Box 55 Chitose  
Tokyo 156  
Tel. (03) 34 39-0124

SOUTH and EAST ASIA

**Legal Library Services Ltd**

Orchard  
PO Box 0523  
Singapore 9123  
Tel. 243 24 98  
Fax 243 24 79

SOUTH AFRICA

**Safto**

5th Floor, Export House  
Cnr Maude & West Streets  
Sandton 2146  
Tel. (011) 883-3737  
Fax (011) 883-6569

ANDERE LÄNDER  
OTHER COUNTRIES  
AUTRES PAYS

**Office des publications officielles  
des Communautés européennes**

2, rue Mercier  
L-2985 Luxembourg  
Tél. 29 29-1  
Télex PUBOF LU 1324 b  
Fax 48 85 73, 48 68 17



OFICINA DE PUBLICACIONES OFICIALES DE LAS COMUNIDADES EUROPEAS  
KONTDRET FOR DE EUROPÆISKE FÆLLESSKABERS OFFICIELLE PUBLIKATIONER  
AMT FÜR AMTLICHE VERÖFFENTLICHUNGEN DER EUROPÄISCHEN GEMEINSCHAFTEN  
ΥΠΗΡΕΣΙΑ ΕΠΙΣΗΜΩΝ ΕΚΔΟΣΕΩΝ ΤΩΝ ΕΥΡΩΠΑΪΚΩΝ ΚΟΙΝΟΤΗΤΩΝ  
OFFICE FOR OFFICIAL PUBLICATIONS OF THE EUROPEAN COMMUNITIES  
OFFICE DES PUBLICATIONS OFFICIELLES DES COMMUNAUTÉS EUROPÉENNES  
UFFICIO DELLE PUBBLICAZIONI UFFICIALI DELLE COMUNITÀ EUROPEE  
BUREAU VOOR OFFICIELE PUBLIKATIES DER EUROPESE GEMEENSCHAPPEN  
SERVIÇO DAS PUBLICAÇÕES OFICIAIS DAS COMUNIDADES EUROPEIAS

L - 2985 Luxembourg

Catalogue number: CA-CX-96-001-EN-C