

Extract from "Industrial Trends - March 1992"

Downturn in Germany too

In December 1991 industrial output in the European Community (EUR12) showed no sign of recovery; on the contrary, it stagnated even in Germany, which as the largest Member State accounts for 28 % of EC output. The December **production index** for EUR12, adjusted for the number of working days, is currently estimated at 112.0 (1985 = 100). This represents a rate of increase of -1.1 % compared with December 1990. After **seasonal adjustment**, the estimated index stood at 112.9 in December 1991, as against 114.8 in the previous month. Compared with the cumulative figure for the third quarter, **seasonally adjusted EC output** rose by only 0.2 % (investment goods industry -1.1 %) in the fourth quarter of 1991. The corresponding rates of increase (where available) for the individual **Member States** were as follows: Netherlands 3.6 %, Ireland 2.2 % (estimated), France 0.7 %, Italy 0.4 %, Luxembourg -0.1 % (estimated), United Kingdom -0.2 %, Germany -1.0 %, Denmark -3.3 %. **Industrial output thus continues to stagnate.**

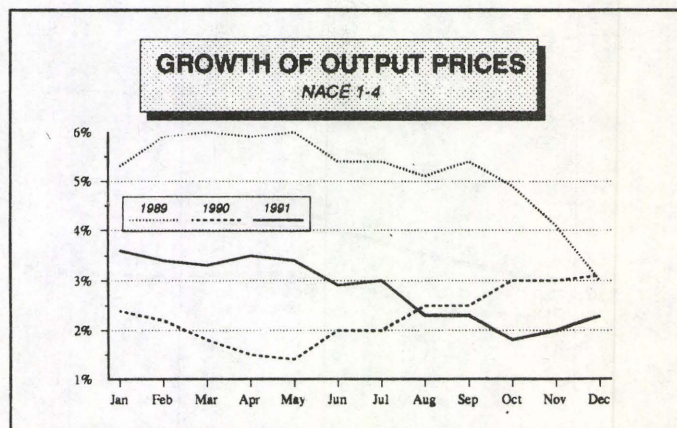
In the **USA** industrial output is still stagnating at -0.1 % (rate of increase for the fourth quarter compared with the third); in **Japan** it fell by 0.6 %.

Industrial **producer prices** in the European Community are rising at present (December 1991) at an annual rate of only 2.1 %, which is lower than in the same period of the previous year. Any effects of the recent Middle East war have thus abated in the meantime.

The **annual rate of increase** (1991 compared with 1990) in **industrial output** (NACE 1-4) for the individual Member States and the EC as a whole is currently as follows: **EUR12: -0.3 %**, Ireland +3.8 %, Netherlands +3.7 %, Germany +2.8 %, Denmark +2.0 %, Luxembourg +0.4 %, Spain -0.2 %, France -0.7 %, Italy -2.1 %, United Kingdom -2.9 %.

The differing rates of increase in output in 1991 in various branches of industry for the four largest Member States show

an interesting picture: It is clear that in some cases the trends differed considerably in the individual countries: for example, the timber processing industry boomed in Germany, whereas output fell sharply in the United Kingdom. The same applies to the paper industry. On the other hand, the chemical industry stagnated in all four Member States, while the plastics and rubber industry in Germany and France showed rather positive growth rates. There were definite signs of a downturn in the metal products and mechanical engineering sectors in Italy and the United Kingdom. On the other hand, the electrical engineering and car industries showed a downturn or stagnation in all four Member States, as did the textile and footwear industries. The United Kingdom in particular showed clear signs of recession in the clothing industry in 1991.



Manuscript completed on = 13.01.1992

For further information please contact: B. FELDMANN
Eurostat, L-2920 Luxembourg, tel. 4301-4401 Fax: 4301 4771

Price (excl. VAT) in Luxembourg: Subscription ECU 192

Catalogue number: CA-NL-92-007-EN-C

LANGFRISTIGER TREND

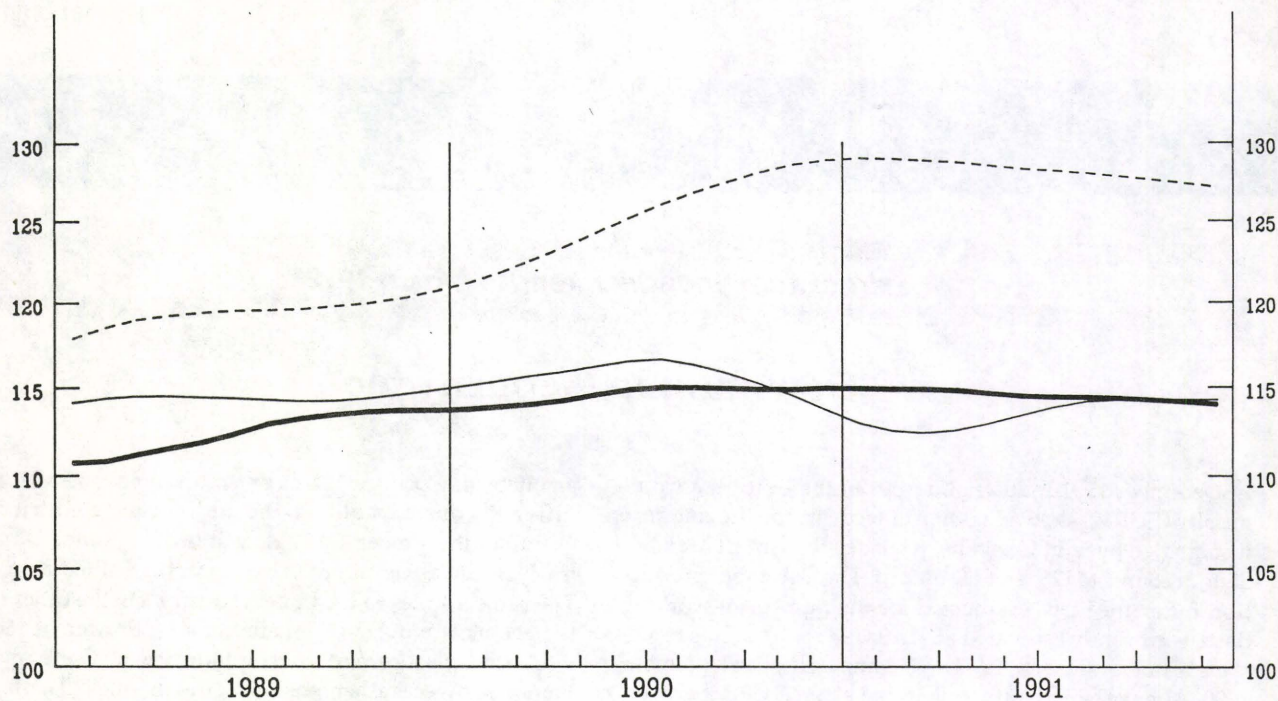
LONG TERM TREND

TENDANCE A LONG TERME

NACE 1-4

1985 = 100

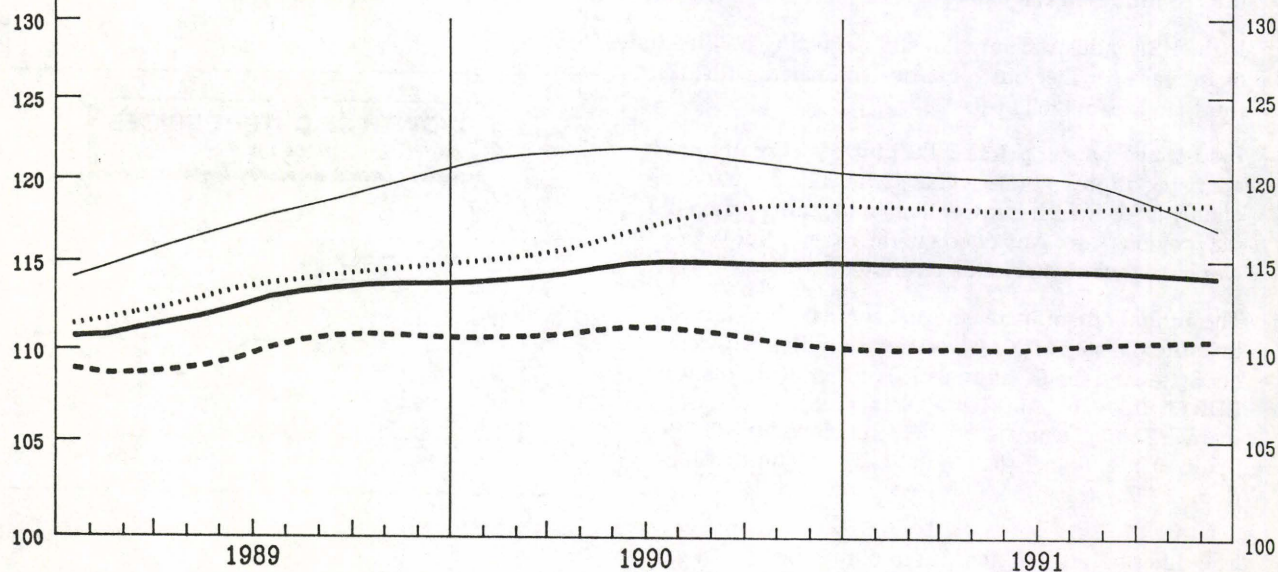
— USA — EUR 12 - - - JAPAN



EUR 12

1985 = 100

—	INDUSTRIE NACE 1-4	INDUSTRY NACE 1-4	INDUSTRIE NACE 1-4
- - -	INT ROHSTOFFE UND HALBWAREN	INTERMEDIATE GOODS	BIENS INTERMEDIAIRES
—	INV INVESTITIONSGUETER	CAPITAL GOODS	BIENS D'INVESTISSEMENT
.....	CON VERBRAUCHSGUETER	CONSUMER GOODS	BIENS DE CONSOMMATION



BASISINDIKATOREN BASIC INDICATORS INDICATEURS DE BASE

1985 = 100

	Letzte Zahl / Latest figure / Dernier chiffre			Veränderung / Change / Variation	
	Zeitraum Period Période	Pro Arbeitstag Per working day Par jour ouvrable	Saisonbereinigt Seasonally adjusted Désaisonnalisés	Pro Arbeitstag Per working day Par jour ouvrable %B (1)	Saisonbereinigt Seasonally adjusted Désaisonnalisés %A (2)

PRODUKTIONSINDEZES

INDICES OF PRODUCTION

INDICES DE PRODUCTION

NACE 1-4 GESAMTE INDUSTRIE OHNE BAUINDUSTRIE	EUR12	12	91	TOTAL INDUSTRY EXCLUDING CONSTRUCTION	112.0	112.9	ENSEMBLE DE L'INDUSTRIE SANS BATIMENT	-0.3	0.2
B	08	91		98.4		108.1		-5.8	-2.2
DK	12	91		104.9		107.5		0.3	-3.3
D	12	91		115.9		118.9		-0.6	-0.8
GR	10	91		104.4		98.9		3.0	1.5
E	10	91		130.9		121.6		2.4	2.5
F	12	91		114.0		113.9		1.3	0.7
IRL	11	91		166.6		159.2		6.1	6.2
I	12	91		108.1		111.2		-1.2	0.4
L	11	91		125.1		120.9		1.3	0.1
NL	12	91		130.0		114.3		2.4	3.6
P	05	91		137.4		133.1		-0.2	-2.5
UK	12	91		104.3		105.8		-0.5	-0.1
USA	12	91		111.8		114.2		-0.5	0.2
J	12	91		130.9		126.6		-0.9	-0.6

INT GRUNDSTOFFE U. PROD. GUETER	EUR12	12	91	INTERMEDIATE GOODS	107.0	109.6	0.5	BIENS INTERMEDIAIRES	0.6
B	08	91		99.6		109.7		-5.1	-1.8
DK	12	91		94.2		109.3		-0.9	-3.7
D	12	91		103.5		113.5		-0.5	-0.3
GR	10	91		102.1		98.6		-1.2	0.9
E	10	91		116.2		110.7		0.3	1.5
F	12	91		114.6		113.4		1.6	1.1
IRL	11	91		144.2		144.6		9.9	4.3
I	12	91		107.1		111.7		-0.0	0.6
L	11	91		123.5		119.2		0.3	-0.1
NL	12	91		137.0		112.7		5.0	6.8
P	05	91		128.7		122.1		-1.9	-1.3
UK	12	91		101.1		102.3		1.7	0.4
USA	12	91		114.6		117.7		-2.5	-0.7
J	12	91		127.3		124.7		-1.8	-1.1

INV INVESTITIONSGUETER	EUR12	12	91	CAPITAL GOODS INDUSTRIES	123.5	115.6	-2.1	BIENS D'INVESTISSEMENT	-1.1
B	08	91		93.1		103.5		-6.9	-8.6
DK	12	91		120.0		104.2		-0.6	-2.4
D	12	91		135.7		123.5		0.1	-1.5
GR	10	91		129.2		125.0		14.9	4.5
E	10	91		158.8		136.3		-6.3	2.6
F	12	91		105.5		103.9		-3.5	-0.7
IRL	11	91		237.9		225.8		3.3	10.8
I	12	91		114.1		107.8		-6.5	-3.2
L	11	91		123.0		117.7		9.2	-2.6
NL	12	91		114.7		109.8		-1.1	-2.8
P	05	91		127.0		116.1		-2.3	-0.9
UK	12	91		117.1		111.6		-3.5	-1.0
USA	12	91		115.0		117.0		-3.6	-0.1
J	12	91		145.4		141.2		-1.1	-0.2

CON VERBRAUCHSGUETER	EUR12	12	91	CONSUMER GOODS	111.0	117.2	0.2	BIENS DE CONSOMMATION	0.6
B	08	91		102.1		111.2		-2.6	-0.9
DK	12	91		100.9		108.6		1.5	-3.5
D	12	91		112.3		122.5		-1.4	-1.0
GR	10	91		102.2		92.9		5.7	1.9
E	10	91		144.1		131.4		7.6	3.6
F	12	91		118.1		120.8		3.3	0.7
IRL	11	91		152.1		139.2		5.4	4.3
I	12	91		106.6		112.4		0.1	2.3
L	11	91		133.5		130.2		2.8	3.0
NL	12	91		127.0		119.8		-0.7	-0.1
P	05	91		137.4		134.6		-0.3	-0.5
UK	12	91		101.4		109.1		-2.8	-0.3
USA	12	91		112.5		116.8		2.4	0.3
J	12	91		125.6		118.1		-0.9	0.2

UMSATZ

TURNOVER

CHIFFRE D'AFFAIRES

NACE 1-4 GESAMTE INDUSTRIE OHNE BAUINDUSTRIE	EUR12	09	91	TOTAL INDUSTRY EXCLUDING CONSTRUCTION	136.7	131.6	3.8	ENSEMBLE DE L'INDUSTRIE SANS BATIMENT	0.7
---	-------	----	----	---------------------------------------	-------	-------	-----	---------------------------------------	-----

ABHAENGIGE BESHCAEFTIGTE

NUMBER OF EMPLOYEES

NOMBRE DE SALARIES

NACE 1-4 GESAMTE INDUSTRIE OHNE BAUINDUSTRIE	EUR12	III	90	TOTAL INDUSTRY EXCLUDING CONSTRUCTION	98.6	98.2	0.3	ENSEMBLE DE L'INDUSTRIE SANS BATIMENT	0.2
---	-------	-----	----	---------------------------------------	------	------	-----	---------------------------------------	-----

% B(1) - Letzte 3 Monate gegenüber dem entsprechenden
Vorjahreszeitraum
- Last 3 months compared with corresponding
months of previous year
- Les 3 derniers mois par rapport aux mois
correspondants de l'année précédente

% A(2) - Letzte 3 Monate gegenüber den vorhergehenden
3 Monaten
- Last 3 months compared with previous 3 months
- Les 3 derniers mois par rapport aux 3 mois
précédents

PRODUKTIONSINDIZES - SAISONBEREINIGT
INDICES OF PRODUCTION - SEASONALLY ADJUSTED
INDICES DE PRODUCTION - DÉSAISONNALISÉS

1985 = 100

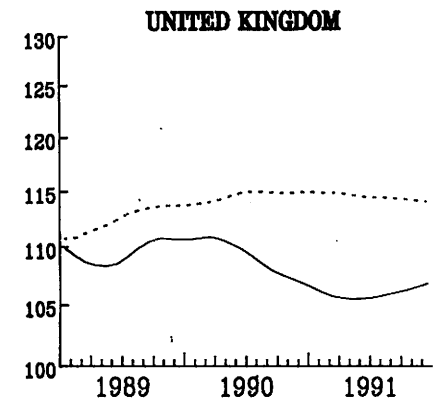
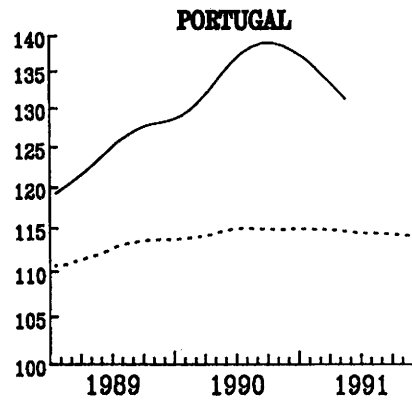
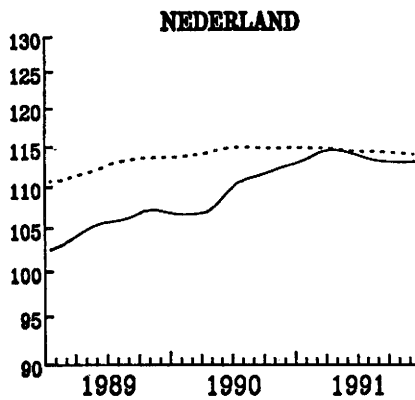
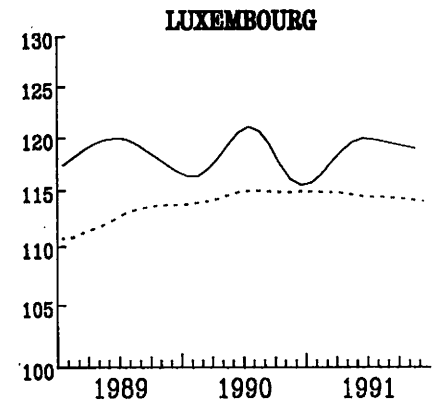
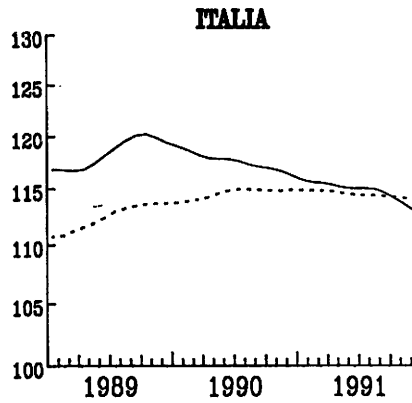
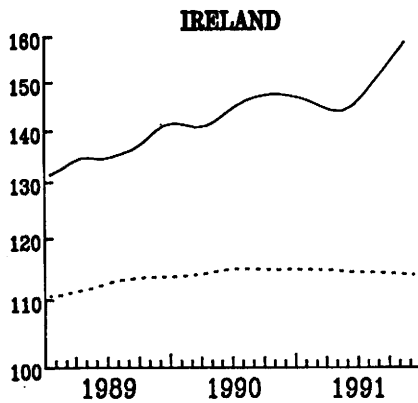
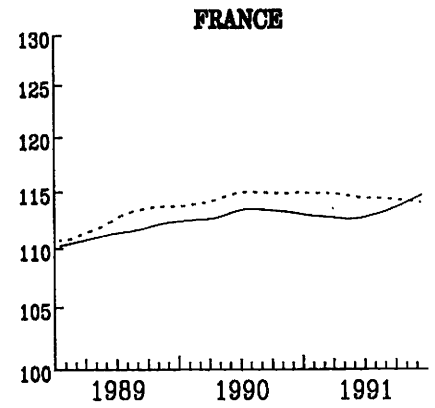
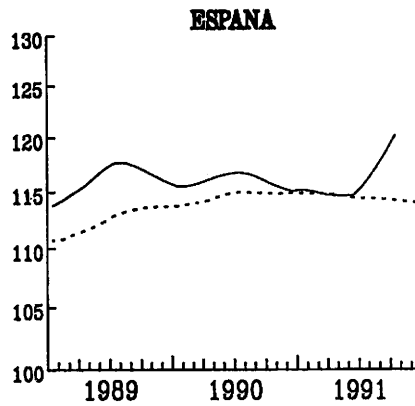
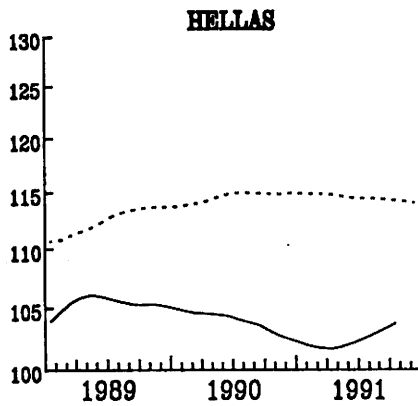
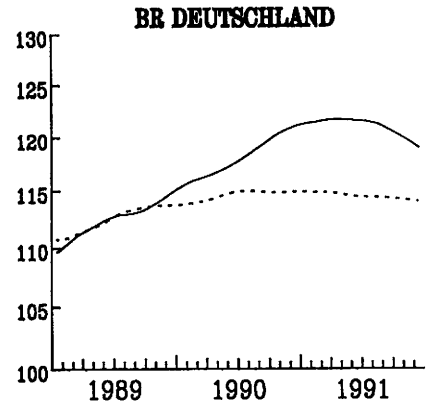
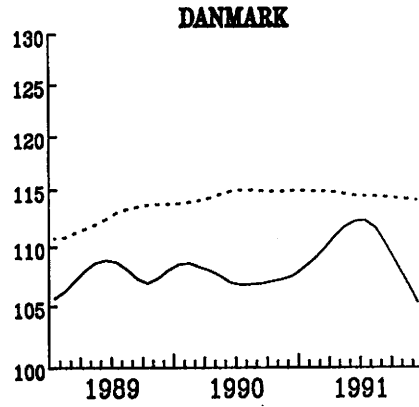
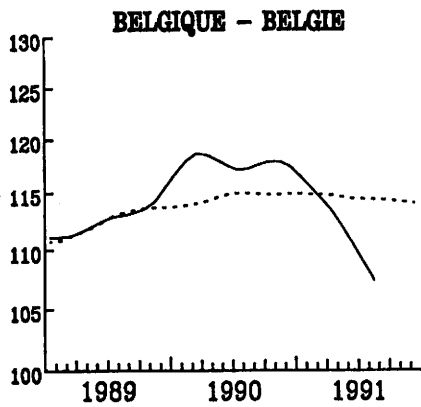
	1988	1989	1990	1991							
				06	07	08	09	10	11	12	
NACE 1-4											
GESAMTE INDUSTRIE OHNE BAUINDUSTRIE				TOTAL INDUSTRY EXCLUDING CONSTRUCTION				ENSEMBLE DE L'INDUSTRIE SANS BATIMENT			
EUR12	108.8	112.9	115.1	115.7	114.6	113.0	113.8	114.5	114.9	112.9	EUR12
B	108.9	112.7	118.4	116.4	108.4	108.1	:	:	:	:	B
DK	104.8	107.2	107.8	106.7	116.9	110.0	110.6	112.6	106.3	107.5	DK
D	106.5	112.1	117.9	123.9	122.3	120.0	121.2	120.5	120.5	118.9	D
GR	103.7	105.3	103.3	101.1	101.3	101.7	107.4	98.9	:	:	GR
E	111.1	116.1	116.1	112.7	115.4	114.6	114.9	121.6	:	:	E
F	107.5	112.0	113.9	112.4	112.8	113.6	112.4	113.7	113.7	113.9	F
IRL	123.1	137.4	143.8	145.4	143.7	150.6	153.6	153.1	159.2	:	IRL
I	114.2	118.6	117.8	118.6	113.6	112.7	115.4	113.4	118.6	111.2	I
L	110.0	118.6	118.0	122.6	116.2	118.0	121.2	115.2	120.9	:	L
NL	101.0	105.7	109.1	114.7	111.4	111.8	107.8	113.6	115.0	114.3	NL
P	116.2	124.1	135.2	:	:	:	:	:	:	:	P
UK	109.5	109.9	109.3	107.3	107.4	105.7	105.9	106.6	106.1	105.8	UK
USA	111.7	114.5	115.7	113.7	114.5	114.4	114.8	114.6	114.4	114.2	USA
J	112.8	119.7	125.3	126.9	130.8	126.9	127.8	128.0	127.9	126.6	J
INT											
GRUNDSTOFFE U. PROD. GUETER				INTERMEDIATE GOODS				BIENS INTERMEDIAIRES			
EUR12	108.2	110.7	111.2	111.3	110.3	109.2	109.8	110.8	111.0	109.6	EUR12
INV											
INVESTITIONSGUETER				CAPITAL GOODS INDUSTRIES				BIENS D'INVESTISSEMENT			
EUR12	110.6	118.0	121.9	122.4	119.6	118.3	119.0	118.8	118.7	115.6	EUR12
CON											
VERBRAUCHSGUETER				CONSUMER GOODS				BIENS DE CONSOMMATION			
EUR12	109.0	113.0	116.3	119.0	118.9	116.4	118.0	118.7	119.3	117.2	EUR12

INDUSTRIELLE PRODUKTION
LANGFRISTIGER TREND

INDUSTRIAL PRODUCTION
LONG TERM TREND

PRODUCTION INDUSTRIELLE
TENDANCE A LONG TERME

NACE 1-4 1985=100



..... EUR 12

EINFACHE-LOGARITHISCHE SKALA

SEMI-LOGARITHMIC SCALE

ECHELLE SEMI-LOGARITHMIQUE

PRODUKTIONSINDIZES - PRO ARBEITSTAG
INDICES OF PRODUCTION - PER WORKING DAY
INDICES DE PRODUCTION - PAR JOUR OUVRABLE

1985 = 100

	1988	1989	1990	1990			1991			
				10	11	12	10	11	12	

NACE 1-4

GESAMTE INDUSTRIE OHNE BAUINDUSTRIE

TOTAL INDUSTRY EXCLUDING CONSTRUCTION

ENSEMBLE DE L'INDUSTRIE SANS BATIMENT

EUR12	108.8	112.9	115.1	122.1	123.2	113.3	121.6	123.9	112.0	EUR12
B	108.9	112.7	118.4	121.2	129.2	111.2	:	:	:	B
DK	104.8	107.2	107.8	117.9	118.9	101.9	120.9	113.9	104.9	DK
D	106.5	112.1	117.9	132.4	126.9	118.9	132.4	127.8	115.9	D
GR	103.7	105.3	103.3	113.3	108.3	103.2	104.4	:	:	GR
E	111.1	116.1	116.1	123.2	127.2	107.6	130.9	:	:	E
F	107.5	112.0	113.9	116.8	120.2	111.2	116.9	121.8	114.0	F
IRL	123.1	137.4	143.8	147.7	152.6	148.4	156.1	166.6	:	IRL
I	114.2	118.6	117.8	123.6	124.4	113.9	120.7	128.8	108.1	I
L	110.0	118.6	118.0	118.0	120.0	114.4	117.2	125.1	:	L
NL	101.0	105.7	109.1	113.0	126.0	130.0	117.0	131.0	130.0	NL
P	116.2	124.1	135.2	142.4	143.8	138.8	:	:	:	P
UK	109.5	109.9	109.3	112.4	115.2	103.9	110.8	114.6	104.3	UK
USA	111.7	114.5	115.7	117.9	114.1	111.5	116.2	113.7	111.8	USA
J	112.8	119.7	125.3	131.9	130.1	132.2	130.2	129.6	130.9	J

INT

GRUNDSTOFFE U. PROD. GUETER

INTERMEDIATE GOODS

BIENS INTERMEDIAIRES

EUR12	108.2	110.7	111.2	116.3	118.4	106.8	116.6	119.4	107.0	EUR12
-------	-------	-------	-------	-------	-------	-------	-------	-------	-------	-------

INV

INVESTITIONSGUETER

CAPITAL GOODS INDUSTRIES

BIENS D'INVESTISSEMENT

EUR12	110.6	118.0	121.9	126.8	128.0	128.9	125.0	126.9	123.5	EUR12
-------	-------	-------	-------	-------	-------	-------	-------	-------	-------	-------

CON

VERBRAUCHSGUETER

CONSUMER GOODS

BIENS DE CONSOMMATION

EUR12	109.0	113.0	116.3	130.0	127.9	111.4	129.7	129.5	111.0	EUR12
-------	-------	-------	-------	-------	-------	-------	-------	-------	-------	-------

Type 03

INDUSTRIELLE PRODUKTION

Veränderung gegenüber dem
Vorjahresquartal

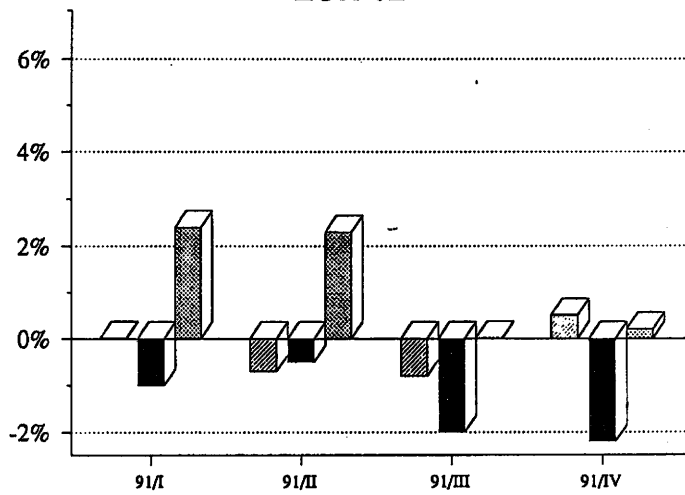
INDUSTRIAL PRODUCTION

Change from the corresponding quarter
of the previous year

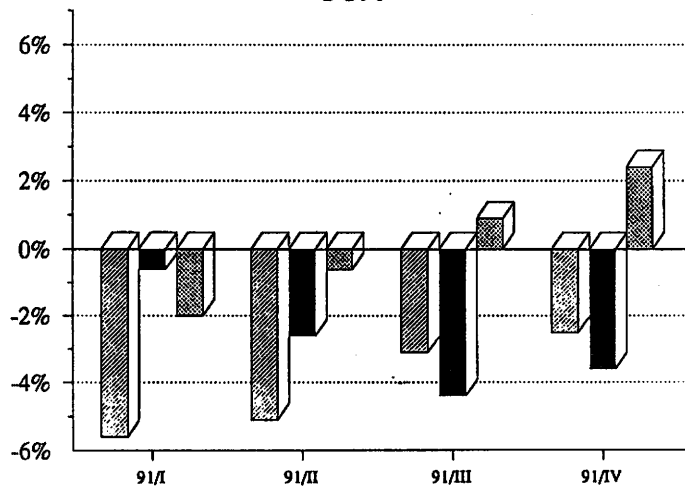
PRODUCTION INDUSTRIELLE

Variation par rapport au trimestre
de l'année précédente

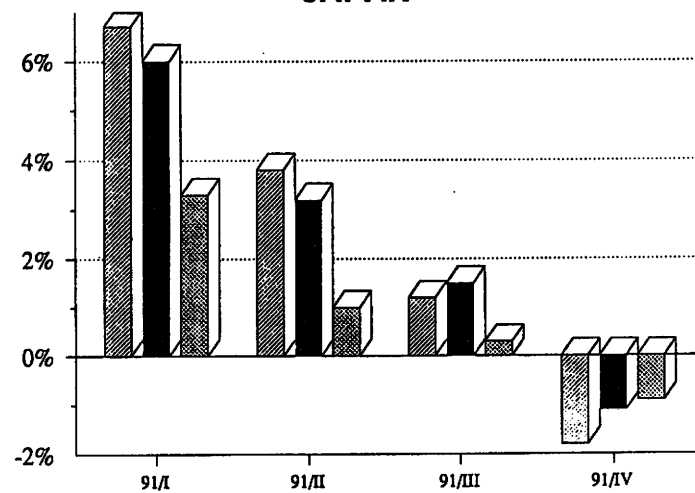
EUR 12



USA



JAPAN



Grundstoffe und Produktionsgüter

Investitionsgüter

Verbrauchsgüter

Intermediate goods

Capital goods

Consumption goods

Biens intermédiaires

Biens d'investissement

Biens de consommation

ERZEUGERPREISINDEX

PRODUCER PRICE INDEX

INDICE DES PRIX A LA PRODUCTION

EUR 12 - 1985 = 100

IN LANDESWAEHRUNG

— Industrie NACE 1-4
— Rohstoffe und Halbwaren
- - - Investitionsgueter
..... Verbrauchsgueter

IN ECU

- - - - - Industrie NACE 1-4

IN NATIONAL CURRENCY

— Industry NACE 1-4
— Intermediate Goods
- - - Capital Goods
..... Consumer Goods

IN ECU

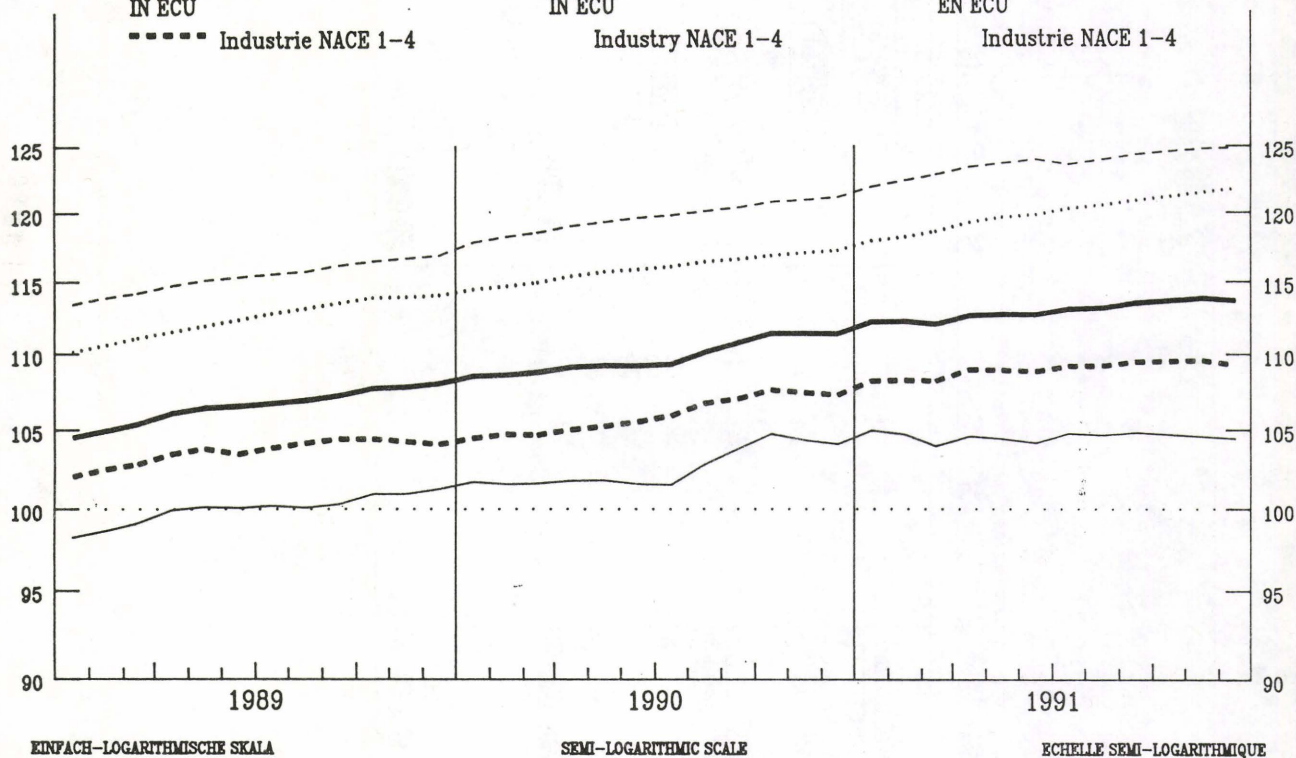
- - - - - Industry NACE 1-4

EN MONNAIE NATIONALE

— Industrie NACE 1-4
— Biens Intermediaires
- - - Biens d'Investissement
..... Biens de Consommation

EN ECU

- - - - - Industrie NACE 1-4



VERAENDERUNG % T/T-12

VARIATION % T/T-12

VARIATION % T/T-12

— IN LANDESWAEHRUNG

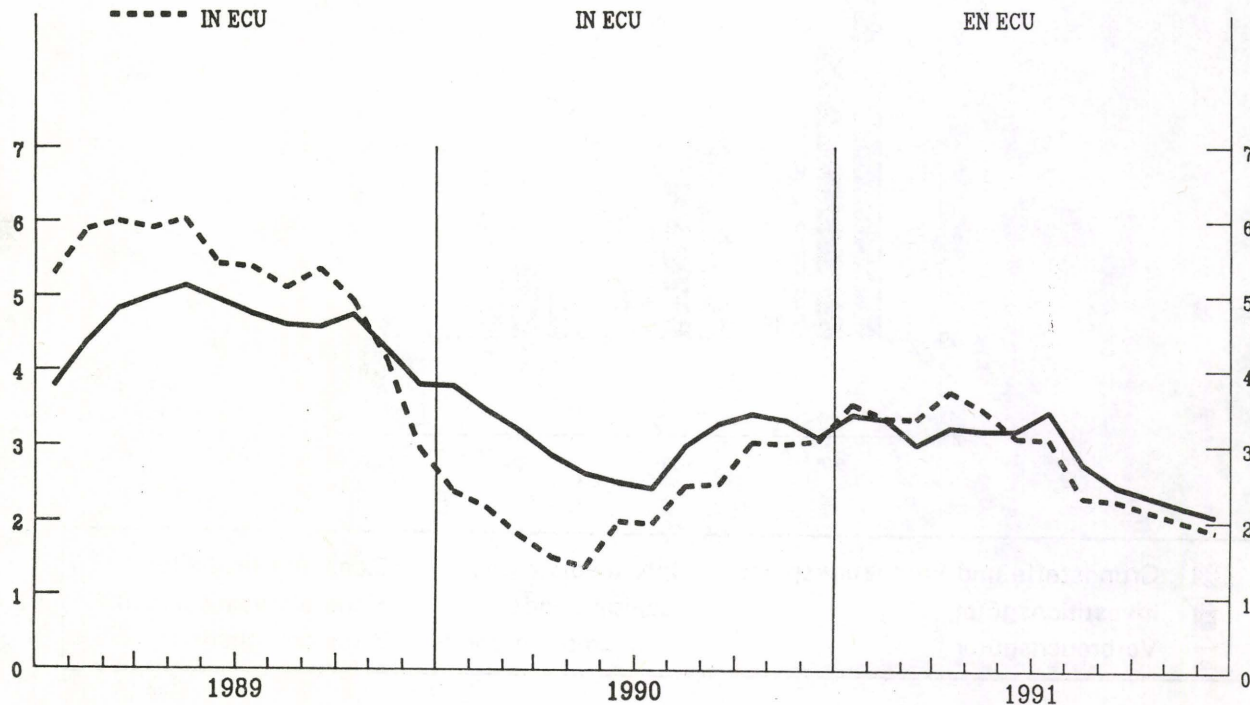
- - - - - IN ECU

IN NATIONAL CURRENCY

IN ECU

EN MONNAIE NATIONALE

EN ECU



GESAMTE INDUSTRIE OHNE BAUINDUSTRIE
TOTAL INDUSTRY EXCLUDING CONSTRUCTION
ENSEMBLE DE L'INDUSTRIE SANS BATIMENT
NACE 1-4

PREISINDIZES - PRICE INDICES - INDICES DE PRIX

1985 = 100

	1989	1990	1991							Letzte Zahl Latest figure Dernier chiffre		
			06	07	08	09	10	11	12	%	%	

IN LANDESHAHRUNG

IN NATIONAL CURRENCY

EXPRIMES EN MONNAIE NATIONALE

EUR12	106.5	109.8	112.5	113.1	113.2	113.5	113.7	113.8	113.7	2.1	-0.1	EUR12
B	93.0	93.6	92.6	92.5	92.8	93.3	93.4	93.1	92.0	-1.5	-1.2	B
DK	107.0	108.8	110.0	110.0	110.0	111.0	111.0	111.0	111.0	1.8	?	DK
D	99.3	101.0	103.1	104.0	104.0	104.3	104.4	104.3	104.1	2.6	-0.2	D
GR	163.3	189.0	217.6	225.4	227.4	229.3	232.2	231.8	230.8	12.8	-0.4	GR
E	109.2	111.5	113.0	113.1	113.2	113.4	113.6	113.8	113.6	0.7	-0.2	E
F (1)	105.7	107.6	107.9	108.2	108.6	109.0	109.1	109.3	109.4	0.5	0.1	F (1)
IRL	112.7	113.0	114.2	114.4	114.3	114.5	114.8	114.9	115.1	1.7	0.2	IRL
I	113.1	117.8	121.3	121.6	121.6	121.9	122.2	122.4	122.2	1.9	-0.2	I
L	100.8	98.8	96.7	96.5	97.1	96.3	95.9	95.5	94.7	-1.8	-0.8	L
NL	86.0	87.3	89.6	89.8	89.9	90.2	89.9	89.9	89.8	3.0	-0.1	NL
P	:	:	:	:	:	:	:	:	:	:	:	P
UK	111.6	117.6	122.9	123.4	123.3	123.5	123.8	124.4	124.3	3.1	-0.1	UK

IN ECU

IN ECU

EXPRIMES EN ECU

EUR12	103.6	106.0	108.6	109.2	109.2	109.4	109.6	109.5	109.3	1.9	-0.3	EUR12
B	96.3	99.1	98.4	98.2	98.7	99.2	99.5	99.4	98.5	-0.8	-1.0	B
DK	106.6	111.1	111.4	111.0	111.2	112.5	112.5	112.2	112.3	1.1	0.0	DK
D	106.8	109.6	111.7	112.7	112.8	113.3	113.5	113.7	113.8	2.9	0.1	D
GR	95.6	98.2	101.5	105.1	105.2	105.6	106.6	105.1	103.5	2.7	-1.5	GR
E	108.0	111.2	113.7	113.4	113.9	113.7	113.4	113.7	112.7	1.1	-0.9	E
F (1)	102.3	105.7	105.1	105.5	105.8	106.1	106.2	106.4	106.8	0.1	0.4	F (1)
IRL	103.8	105.3	106.3	106.5	106.4	106.8	107.2	107.4	107.6	1.9	0.2	IRL
I	108.3	112.0	114.9	114.9	114.6	115.0	115.4	115.1	114.7	1.8	-0.4	I
L	104.4	104.6	102.7	102.5	103.2	102.5	102.1	102.0	101.3	-1.1	-0.6	L
NL	92.5	94.9	97.2	97.5	97.6	98.1	97.9	98.1	98.2	3.4	0.1	NL
P	:	:	:	:	:	:	:	:	:	:	:	P
UK	97.7	97.1	103.5	104.2	103.9	103.7	103.7	103.5	102.6	2.5	-0.8	UK

(1) Schätzung - Estimation Eurostat

GESAMTE INDUSTRIE OHNE BAUINDUSTRIE
TOTAL INDUSTRY EXCLUDING CONSTRUCTION
ENSEMBLE DE L'INDUSTRIE SANS BATIMENT

NACE 1-4

1985 = 100

	EUR12	B	DK	D(WEST)	GR	E	F	IRL	I	L	NL	P	UK
PRODUKTIONSINDIZES													
INDICES OF PRODUCTION													
INDICES DE PRODUCTION													
1986	102.4	100.8	106.5	102.4	99.8	103.1	100.9	102.2	104.1	102.1	100.2	107.3	102.4
1987	104.4	103.0	102.8	102.7	98.1	107.8	102.8	111.2	106.8	101.2	101.1	112.0	105.7
1988	108.8	108.9	104.8	106.5	103.7	111.1	107.5	123.1	114.2	110.0	101.0	116.2	109.5
1989	112.9	112.7	107.2	112.1	105.3	116.1	112.0	137.4	118.6	118.6	105.7	124.1	109.9
1990	115.1	118.4	107.8	117.9	103.3	116.1	113.9	143.8	117.8	118.0	109.1	135.2	109.3
1991	114.8	110.5	110.0	121.2	102.0	116.0	113.1	149.4	115.4	118.5	113.2	130.9	106.1
UMSATZ													
TURNOVER													
CHIFFRE D'AFFAIRES													
Saisonbereinigt													
Seasonally adjusted													
Dsaisonnalisés													
1990 11	131.2	127.6	121.5	126.8			128.1	135.8	137.7	110.4			132.1
12	127.5	120.6	114.0	125.9			120.8	140.5	140.4	103.4			133.0
1991 01	132.4	128.5	121.1	128.8			128.1	134.2	145.4	107.1			129.9
02	129.1	123.3	118.5	129.0			122.5	136.4	140.4	102.8			129.8
03	127.1	120.4	117.2	127.3			120.4	142.2	135.9	102.7			129.2
04	131.3	123.7	120.0	132.0			126.5	140.7	141.8	109.8			128.3
05	129.5		120.2	127.8			122.6	141.3	142.0	105.2			130.2
06	130.8		117.7	132.0			121.9	147.4	138.7	108.4			131.4
07	135.9		128.6	131.6			130.5	137.2	149.7	108.3			130.6
08	126.9		119.2	128.6			123.3	144.3	137.1	107.4			128.8
09	131.6		121.3	131.0			125.5	145.4	142.3	109.4			129.1
10			131.4	129.8				144.7	148.2	107.6			128.9
11			119.1	130.9						103.7			130.2
12			124.0	129.8									128.6
AUSFUHR													
EXPORTS													
EXPORTATIONS													
Mengen, Saisonbereinigt													
Volumes, seasonally adjusted													
En volume, désaisonnalisés													
1990 09	88.4		108.3	100.0	91.6	118.9	117.1	134.4	99.7		115.4	163.5	109.2
10	96.2		115.6	111.0	152.9	114.6	134.1	143.2	101.5		126.9	173.8	119.5
11	93.4		120.5	109.4	129.3	131.8	129.7	132.4	99.0		121.2	189.1	121.3
12	84.6		117.9	95.4	101.4	118.1	113.3	137.2	105.1		111.6	170.6	109.0
1991 01	101.7		125.3	122.2	151.5	133.4	131.8	145.9	110.9		130.6	184.8	122.9
02	97.0		120.6	113.3	143.9	137.0	126.6	143.2	112.3		120.7	178.9	116.6
03	93.4		118.7	107.5	121.0	127.9	123.6	143.3	103.4		125.3	169.6	110.5
04	99.8		130.9	112.4	147.2	148.2	138.1	138.3	107.5		123.4	182.9	127.6
05	98.2		124.5	113.9	140.4	133.2	129.4	144.6	103.3		126.5	186.4	120.7
06	94.6		128.4	108.8	145.3	133.0	129.2	153.6	107.2		123.3	157.6	114.2
07	104.0		132.2	120.5	176.5	132.5	140.8	144.6	105.3		134.8	181.3	125.3
08	100.3		131.7	117.0	153.7	129.3	128.5	150.0	100.0		122.9	169.8	121.8
09	99.0		130.5	112.9	130.6	134.5	139.7	152.9	101.4		121.5	166.4	115.2
10	105.7		133.2	114.8	134.5	155.6	148.1	157.8	106.9		130.6	194.7	122.9
11	102.8		133.8	117.7	136.8	139.0	136.3	155.3	100.6		126.2	174.3	115.7
EINFUHR													
IMPORTS													
IMPORTATIONS													
Mengen, Saisonbereinigt													
Volumes, seasonally adjusted													
En volume, désaisonnalisés													
1990 09	134.3		101.0	135.8	121.8	203.0	142.0	128.6	118.0		122.8	240.1	117.0
10	146.4		112.4	145.5	108.8	208.5	155.4	134.9	122.1		132.8	262.7	121.3
11	147.0		118.0	160.6	105.2	225.2	148.2	127.2	127.2		131.2	263.0	117.9
12	133.1		99.6	143.7	82.8	197.1	138.3	119.1	111.1		117.6	242.9	112.6
1991 01	165.8		125.5	179.7	128.6	250.7	158.3	136.3	140.3		138.7	276.1	124.8
02	155.8		115.3	165.0	144.0	225.9	150.2	137.5	131.9		134.0	253.3	118.3
03	149.0		105.2	160.9	117.6	214.3	145.1	136.3	115.8		130.2	255.6	116.9
04	165.8		125.3	171.8	119.9	268.9	157.1	131.8	137.6		139.2	277.3	123.2
05	158.4		117.3	175.7	115.3	234.0	145.8	145.0	133.4		136.6	256.5	119.3
06	152.6		113.3	168.1	134.0	237.5	146.5	134.0	128.3		128.8	255.0	116.5
07	169.1		126.3	183.0	114.1	262.5	164.9	147.7	137.9		145.2	290.1	120.4
08	155.1		113.6	165.6	131.2	229.1	147.3	141.3	121.3		128.1	246.5	119.9
09	160.7		118.7	169.3	124.4	246.9	156.3	141.8	132.7		133.8	262.7	119.2
10	161.9		121.4	169.7	129.0	267.4	157.0	131.9	136.3		136.6	297.9	119.8
11	160.0		123.8	168.1	199.7	260.5	149.9	130.9	128.7		129.2	256.9	117.8
ERZEUGERPREISINDIZES													
PRODUCER PRICE INDICES													
INDICE DE PRIX A LA PRODUCTION													
1990 11	111.4	94.2	109.0	101.8	203.8	112.7	108.6	113.2	119.7	96.6	87.7		120.6
12	111.4	93.4	109.0	101.5	204.6	112.8	108.9	113.2	119.9	96.4	87.2		120.6
1991 01	112.2	92.9	109.0	102.4	208.5	113.5	108.9	113.1	121.3	96.4	89.3		121.4
02	112.2	91.9	109.0	102.3	208.7	113.3	108.8	113.5	121.5	96.0	89.2		122.0
03	112.0	91.4	109.0	102.0	210.5	112.7	108.8	113.9	121.6	95.0	89.2		121.6
04	112.6	92.1	109.0	102.9	215.9	112.8	108.5	114.2	121.5	97.2	89.2		123.2
05	112.6	92.4	110.0	103.0	219.6	113.0	108.2	114.2	121.2	97.5	89.4		125.2
06	112.5	92.6	110.0	103.1	217.6	113.0	107.9	114.2	121.3	96.7	89.6		122.9
07	113.1	92.5	110.0	104.0	225.4	113.1	108.2	114.4	121.6	96.5	89.8		123.4
08	113.2	92.8	110.0	104.0	227.4	113.2	108.6	114.3	121.6	97.1	89.9		123.3
09	113.5	93.3	111.0	104.3	229.3	113.4	109.0	114.5	121.9	96.3	90.2		123.5
10	113.7	93.4	111.0	104.4	232.2	113.6	109.1	114.8	122.2	95.9	89.9		123.8
11	113.8	93.1	111.0	104.3	231.8	113.8	109.3	114.9	122.4	95.5	89.9		124.4
12	113.7	92.0	111.0	104.1	230.8	113.6	109.4	115.1	122.2	94.7	89.8		124.3
ABHAENGIG BESCHAEFFIGTE													
NUMBER OF EMPLOYEES													
NOMBRE DE SALARIES													
Saisonbereinigt													
Seasonally adjusted													
Désaisonnalisés													
1990 I	98.0	96.6	99.3	105.7	114.5		95.4	99.3	88.4	96.2			95.7
II	98.1	96.9	99.5	106.3	113.9		95.6	99.8	87.9	95.9			95.3
III	98.2	96.8	99.5	107.0	110.8		95.6	100.2	87.5	95.2			95.3
IV		96.7	99.1	107.8	103.0		95.4	100.7		94.8			94.3
1991 I		96.5	98.0	108.4	109.9		94.8			94.5			
II			97.4	108.4			94.2			94.0			
III			96.8	108.2						93.3			
IV			96.0										

BAUGEWERBE
BUILDING AND CIVIL ENGINEERING
BATIMENT ET GENIE CIVIL
NACE 5

Produktionsindizes - Indices of production - Indices de production

	EUR12	B	DK	D	GR	E	F	IRL	I	L	NL	P	UK
1980	:	185.6	:	122.8	:	:	119.4	:	:	134.6	:	:	88.7
1981	:	152.9	95.5	112.4	:	:	118.2	:	:	131.6	:	:	81.8
1982	:	145.8	85.2	107.6	:	:	111.5	:	:	127.1	:	:	88.3
1983	:	118.3	83.6	108.9	:	:	106.4	:	:	124.4	:	:	95.1
1984	:	105.4	94.5	110.6	:	:	100.8	:	:	110.2	:	:	99.6
1985	:	100.0	100.0	100.0	:	:	100.0	:	:	100.0	:	:	100.0
1986	:	101.1	114.3	105.9	:	:	105.1	:	:	108.9	:	:	104.7
1987	:	99.0	115.8	105.5	:	:	110.6	:	:	118.2	:	:	110.7
1988	:	110.0	108.8	110.4	:	:	118.9	:	:	125.4	:	:	120.7
1989	:	115.9	97.9	118.0	:	:	126.3	:	:	135.3	:	:	125.8
1990	:	144.1	93.1	125.0	:	:	127.4	:	:	140.9	:	:	131.8
1991	:	:	84.4	126.7	:	:	129.4	:	:	:	:	:	91.0
Arbeitstglichen													
Per working day													
Par jour ouvrable													
1989 01	:	87.7	97.0	92.3	:	:	115.0	:	:	104.0	:	:	122.9
02	:	115.4	91.1	91.1	:	:	124.4	:	:	129.4	:	:	122.9
03	:	118.7	92.3	112.6	:	:	126.6	:	:	139.5	:	:	122.9
04	:	127.1	95.9	121.3	:	:	127.5	:	:	147.8	:	:	125.6
05	:	125.9	99.4	120.3	:	:	140.8	:	:	154.5	:	:	125.6
06	:	137.4	100.6	130.0	:	:	133.4	:	:	158.2	:	:	125.6
07	:	53.2	99.4	126.0	:	:	126.8	:	:	159.0	:	:	127.0
08	:	123.7	100.6	124.7	:	:	80.2	:	:	61.3	:	:	127.0
09	:	146.8	100.6	134.2	:	:	131.2	:	:	155.1	:	:	127.0
10	:	135.4	100.6	143.3	:	:	134.7	:	:	154.7	:	:	125.6
11	:	131.7	100.6	127.1	:	:	136.0	:	:	149.6	:	:	125.6
12	:	87.3	97.0	92.8	:	:	114.8	:	:	110.6	:	:	125.6
1990 01	:	115.7	91.1	93.2	:	:	119.5	:	:	84.1	:	:	125.8
02	:	138.3	85.2	96.5	:	:	125.7	:	:	132.2	:	:	125.8
03	:	161.2	85.2	127.0	:	:	131.4	:	:	148.2	:	:	125.8
04	:	156.0	88.8	128.6	:	:	136.4	:	:	159.5	:	:	127.4
05	:	163.1	93.5	136.1	:	:	141.7	:	:	170.0	:	:	127.4
06	:	171.3	94.7	132.0	:	:	141.8	:	:	181.2	:	:	127.4
07	:	64.6	95.9	137.7	:	:	125.6	:	:	172.4	:	:	129.5
08	:	152.9	95.9	128.8	:	:	85.4	:	:	61.8	:	:	129.5
09	:	170.1	95.9	141.7	:	:	137.2	:	:	167.7	:	:	129.5
10	:	163.1	99.4	153.4	:	:	136.4	:	:	163.6	:	:	123.7
11	:	170.9	97.0	131.3	:	:	138.7	:	:	158.0	:	:	123.7
12	:	102.6	94.7	93.6	:	:	111.4	:	:	91.7	:	:	123.7
1991 01	:	104.7	89.9	98.1	:	:	123.3	:	:	97.7	:	:	116.2
02	:	79.9	88.8	69.5	:	:	113.1	:	:	78.9	:	:	116.2
03	:	143.3	85.2	131.3	:	:	134.4	:	:	159.9	:	:	116.2
04	:	143.7	82.8	140.2	:	:	138.7	:	:	172.3	:	:	115.8
05	:	136.3	84.0	135.0	:	:	149.6	:	:	173.9	:	:	115.8
06	:	149.7	85.2	139.3	:	:	142.7	:	:	180.0	:	:	115.8
07	:	63.3	85.2	143.6	:	:	129.0	:	:	174.4	:	:	116.8
08	:	132.2	86.4	125.2	:	:	85.3	:	:	60.1	:	:	116.8
09	:	:	84.0	148.9	:	:	136.5	:	:	170.6	:	:	116.8
10	:	:	82.8	157.1	:	:	139.4	:	:	169.4	:	:	:
11	:	:	80.5	136.1	:	:	147.0	:	:	163.0	:	:	:
12	:	:	78.1	96.0	:	:	114.3	:	:	:	:	:	:
Saisonebereinigt													
Seasonally adjusted													
Désaisonnalisés													
1989 01	:	119.3	102.6	119.7	:	:	127.1	:	:	150.9	:	:	127.2
02	:	141.2	104.4	120.8	:	:	129.4	:	:	153.0	:	:	127.2
03	:	125.1	104.1	118.5	:	:	123.5	:	:	137.8	:	:	127.2
04	:	111.6	104.1	116.9	:	:	120.0	:	:	128.5	:	:	126.3
05	:	110.4	100.5	112.7	:	:	125.1	:	:	130.4	:	:	126.3
06	:	112.1	98.0	119.7	:	:	122.2	:	:	128.9	:	:	126.3
07	:	105.6	96.1	114.4	:	:	124.7	:	:	131.4	:	:	124.1
08	:	111.1	96.1	117.8	:	:	121.6	:	:	122.8	:	:	124.1
09	:	119.2	93.3	118.0	:	:	124.2	:	:	131.8	:	:	124.1
10	:	114.2	91.9	119.1	:	:	124.9	:	:	133.2	:	:	125.5
11	:	117.5	90.9	121.3	:	:	123.5	:	:	134.6	:	:	125.5
12	:	111.2	90.1	121.4	:	:	125.7	:	:	138.4	:	:	125.5
1990 01	:	139.3	95.3	121.6	:	:	130.1	:	:	130.6	:	:	135.2
02	:	152.1	96.2	130.2	:	:	128.8	:	:	149.1	:	:	135.2
03	:	161.3	95.1	126.8	:	:	128.6	:	:	146.2	:	:	135.2
04	:	140.4	95.6	119.8	:	:	129.0	:	:	140.4	:	:	133.0
05	:	148.0	94.6	128.3	:	:	126.4	:	:	145.5	:	:	133.0
06	:	147.6	92.8	120.8	:	:	130.4	:	:	149.4	:	:	133.0
07	:	126.6	93.5	126.5	:	:	124.7	:	:	146.1	:	:	131.0
08	:	144.0	92.7	124.2	:	:	126.4	:	:	130.0	:	:	131.0
09	:	145.8	90.9	122.8	:	:	130.1	:	:	145.6	:	:	131.0
10	:	146.1	93.0	126.9	:	:	127.5	:	:	142.6	:	:	128.0
11	:	157.7	90.2	124.4	:	:	126.9	:	:	143.0	:	:	128.0
12	:	139.1	89.8	122.7	:	:	124.2	:	:	125.2	:	:	128.0
1991 01	:	128.4	94.0	124.7	:	:	129.2	:	:	137.3	:	:	124.9
02	:	99.9	98.1	109.9	:	:	117.2	:	:	100.6	:	:	124.9
03	:	139.4	94.3	124.6	:	:	130.3	:	:	152.6	:	:	124.9
04	:	125.8	89.7	134.9	:	:	130.2	:	:	150.0	:	:	120.7
05	:	119.7	86.4	122.9	:	:	133.1	:	:	146.6	:	:	120.7
06	:	121.9	85.0	128.9	:	:	130.6	:	:	147.7	:	:	120.7
07	:	125.2	84.3	132.0	:	:	128.3	:	:	146.1	:	:	118.6
08	:	119.9	84.2	125.0	:	:	128.7	:	:	132.0	:	:	118.6
09	:	:	80.8	131.2	:	:	129.3	:	:	146.4	:	:	118.6
10	:	:	78.2	128.8	:	:	130.3	:	:	148.3	:	:	:
11	:	:	75.8	128.6	:	:	134.4	:	:	148.7	:	:	:
12	:	:	74.2	128.8	:	:	128.3	:	:	:	:	:	:

AUSSENHANDELSINDEX
NACE 1-4

FOREIGN TRADE INDEX
NACE 1-4

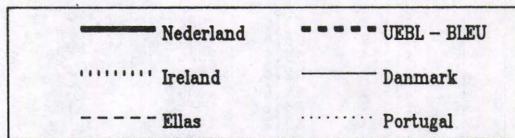
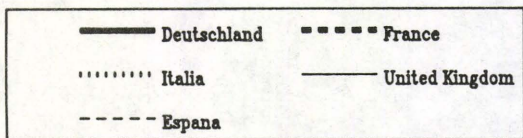
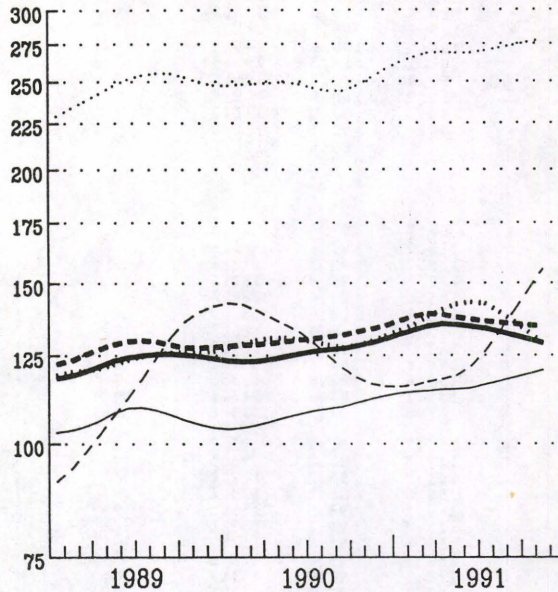
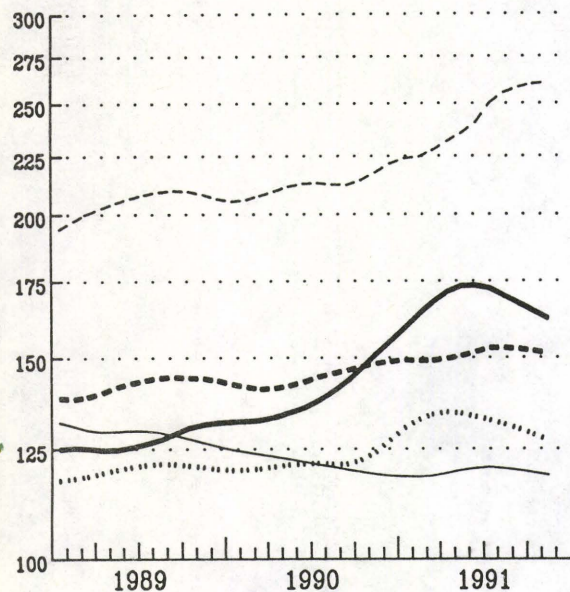
INDICE DU COMMERCE EXTERIEUR
NACE 1-4

1985=100

EINFUHR

IMPORTS

IMPORTATIONS



AUSFUHR

EXPORTS

EXPORTATIONS

