

Electrophoretic Deposition of p-Type Bi₂Te₃ for Thermoelectric Applications

TALEBI, Tahereh, GHOMASHCHI, Reza, TALEMI, Pejman and AMINORROAYA YAMINI, Sima <<http://orcid.org/0000-0002-2312-8272>>

Available from Sheffield Hallam University Research Archive (SHURA) at:
<http://shura.shu.ac.uk/15984/>

This document is the author deposited version. You are advised to consult the publisher's version if you wish to cite from it.

Published version

TALEBI, Tahereh, GHOMASHCHI, Reza, TALEMI, Pejman and AMINORROAYA YAMINI, Sima (2017). Electrophoretic Deposition of p-Type Bi₂Te₃ for Thermoelectric Applications. *International Journal of Chemical, Molecular, Nuclear, Materials and Metallurgical Engineering*, 11 (4).

Repository use policy

Copyright © and Moral Rights for the papers on this site are retained by the individual authors and/or other copyright owners. Users may download and/or print one copy of any article(s) in SHURA to facilitate their private study or for non-commercial research. You may not engage in further distribution of the material or use it for any profit-making activities or any commercial gain.

Electrophoretic Deposition of p-Type Bi_2Te_3 for Thermoelectric Applications

Tahereh Talebi, Reza Ghomashchi, Pejman Talemi, Sima Aminorroaya

Abstract—Electrophoretic deposition (EPD) of p-type Bi_2Te_3 material has been accomplished, and a high quality crack-free thick film has been achieved for thermoelectric (TE) applications. TE generators (TEG) can convert waste heat into electricity, which can potentially solve global warming problems. However, TEG is expensive due to the high cost of materials, as well as the complex and expensive manufacturing process. EPD is a simple and cost-effective method which has been used recently for advanced applications. In EPD, when a DC electric field is applied to the charged powder particles suspended in a suspension, they are attracted and deposited on the substrate with the opposite charge. In this study, it has been shown that it is possible to prepare a TE film using the EPD method and potentially achieve high TE properties at low cost. The relationship between the deposition weight and the EPD-related process parameters, such as applied voltage and time, has been investigated and a linear dependence has been observed, which is in good agreement with the theoretical principles of EPD. A stable EPD suspension of p-type Bi_2Te_3 was prepared in a mixture of acetone-ethanol with triethanolamine as a stabilizer. To achieve a high quality homogenous film on a copper substrate, the optimum voltage and time of the EPD process was investigated. The morphology and microstructures of the green deposited films have been investigated using a scanning electron microscope (SEM). The green Bi_2Te_3 films have shown good adhesion to the substrate. In summary, this study has shown that not only EPD of p-type Bi_2Te_3 material is possible, but its thick film is of high quality for TE applications.

Keywords—Electrical conductivity, electrophoretic deposition, p-type Bi_2Te_3 , thermoelectric materials, thick films.

I. INTRODUCTION

ALMOST 60% of the energy produced by mankind is wasted in the form of unusable thermal energy in various systems such as power plants, cars, planes, computers, or even stovetops. If we can utilise this enormous amount of energy, we can reduce fossil fuel consumption and greenhouse gases, as well help to decrease the effects of global warming [1], [2]. TE materials are especially attractive in this regard because they can convert waste heat into electricity. Using TE materials can increase the overall efficiency of the system by

T. Talebi is with the Mechanical Engineering School, the University of Adelaide, South Australia, Australia (phone: 883-133-360; fax: 883-134-367; e-mail: tahereh.talebinamakrodbari@adelaide.edu.au).

R. Ghomashchi is with the Mechanical Engineering School, the University of Adelaide, South Australia, Australia (e-mail: reza.ghomashchi@adelaide.edu.au).

P. Talemi is with the Chemical Engineering School, the University of Adelaide, South Australia, Australia (e-mail: pejman.talemi@adelaide.edu.au).

S. Aminorroaya is with Institute for Superconducting & Electronic Materials, University of Wollongong, New South Wales, Australia (e-mail: sima@uow.edu.au).

several percentage points [3], [4]. In addition, TEG are reliable and silent with no moving parts [5]. Although TEGs are currently being used in limited applications such as deep-space satellites, high temperature heat-waste recovery and remote power generation for unmanned systems, there remain a number of challenges which need to be addressed before the commercialization of these devices can occur [6], [7].

One of the challenges is the high production cost of TEGs. In addition, the devices are too heavy especially for mobile applications and their specific power to weight factor is low. Therefore, EPD as a cost-effective film fabrication method has been utilized to address these two vital issues for TE applications.

EPD is a film fabrication technique from colloidal suspensions [8]. In EPD, a DC electric field is applied to a suspension of charged particles enabling them to be attracted to the conductive substrate with the opposite charge and form a thick film [9].

EPD is a fast and cost-efficient method, requiring simple equipment. It has the ability to fabricate high quality and crack-free films with high degree of uniformity in the microstructure [10]. It is scalable for industrial applications and its setup can easily be adapted for complex-shaped substrates as well as flat, cylindrical, etc. [11]. This method has been used with numerous materials, for a wide range of applications such as hydroxyapatite for biomedical applications [12], electrolytes for solid oxide fuel cells [13], luminescent materials [14], functionally graded ceramics [15], carbon nanotubes [16], superconductors [17], nanosize zeolite membranes [18], etc. EPD also has industrial and medical applications such as corrosion protection processes.

In this paper, p-type Bi_2Te_3 films has been deposited using the EPD method, and a high quality crack-free thick film has been achieved for TE applications.

II. EXPERIMENTAL PROCEDURE

Bi_2Te_3 powder was commercially available from the Bio-chemical Leader Company with 99.99% purity. The chemical composition of p-type Bi_2Te_3 powder was 22.51 Bi (wt.%), 54.90 Te (wt.%) and 23.59 Sb (wt.%). The median particle size (D50) of 20 μm was characterized for particle sizes of the powder using a Malvern Mastersizer 2000 laser particle size analyser. The SEM image of the starting powder is shown in Fig. 1 at diverse magnifications.

A stable EPD suspension of p-type Bi_2Te_3 was prepared in a mixture of 25% Vol acetone + 75% Vol ethanol with 0.02g triethanolamine as a stabilizer for 100 ml of the media mixture. The purity of the acetone, ethanol, and

triethanolamine supplied by the Sigma Aldrich Company was 99.5%, 99.8% and 99.5%, respectively.

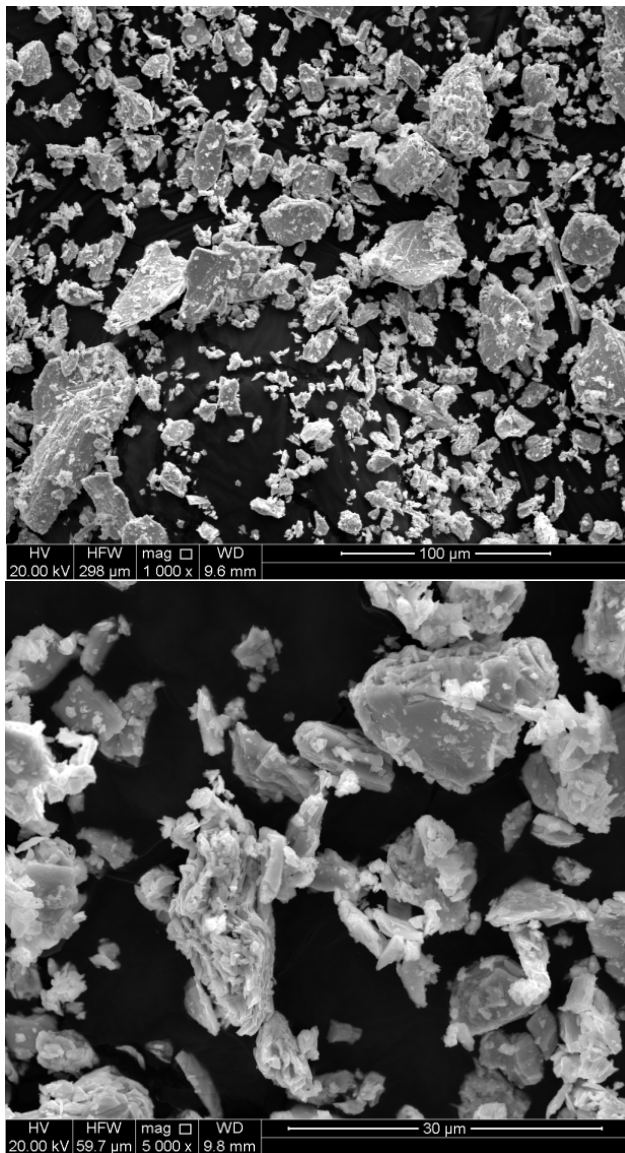


Fig. 1 The SEM image of p-type Bi_2Te_3 powder at diverse magnifications (1000x and 5000x)

To prepare the suspension, 1 g of Bi_2Te_3 powders was dispersed in 100 ml of the media mixture (10 g/L Bi_2Te_3 suspension). The mixture was put in an ultrasonic bath for 15 min to disperse and break the agglomerates and stabilise the suspension. The suspension was then rested for at least for 2 hours to reach stability. The suspension was ultrasonicated for 2 minutes prior to the EPD process.

A schematic image of the EPD cell is shown in Fig. 2. The distance between the substrate and the counter electrode was constant at 10 mm for the EPD process. The electrodes were vertical and kept parallel and fixed during the EPD process.

The substrate and the counter electrode were cut from a commercially obtained copper foil roll, with dimensions of 10×10 mm. A range of deposition voltages (0-100 V) and

times (1-10 minutes) have been investigated for the EPD process.

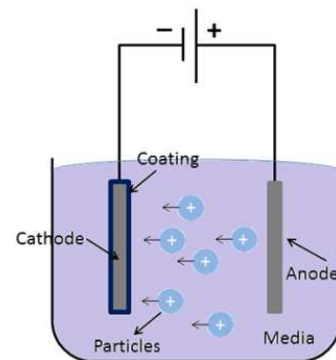


Fig. 2 Schematic image of the EPD cell

III. RESULTS AND DISCUSSION

A. The Effect of EPD Time and Voltage on the Deposition Weight

According to Hamaker's equation [19], the EPD deposit yield (w) is calculated through the following equation:

$$w = \int_{t_1}^{t_2} \mu \cdot E \cdot A \cdot C \cdot dt$$

where μ is the electrophoretic mobility; E is the electric field strength; A is the surface area of the electrode; C is the particle mass concentration and t is the deposition time.

Fig. 3 shows the deposition weights of the suspension at different applied voltages and deposition times. It shows that the deposition weights increase when the applied voltages or deposition times increase. It also shows that there is a linear dependence between these two EPD factors and the deposition weights, which is in good agreement with Hamaker's equation and EPD theoretical principles.

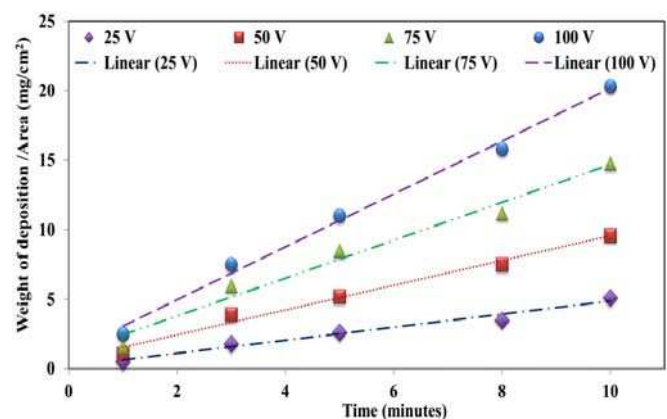


Fig. 3 The linear dependence between the EPD time and voltage with the deposition weight

B. The effect of EPD Voltage on the Film Microstructure

The applied voltage can affect the macro and microstructure of the deposited film. Fig. 4 shows the SEM images of green

Bi_2Te_3 film surface topography at two different EPD voltages of 100 V (a) and 50 V (b) for 10 minutes. It shows that by decreasing the voltage, the roughness of the surface decreases. However, in principal, this can lead to a reduction in the mechanical properties as well as the deposition weight and thickness of the Bi_2Te_3 films, which are desirable neither for handling the green films nor for the potential TE applications [8], [9], [11]. Therefore, in order to accomplish a high quality film, achieving an optimal voltage and time is essential for EPD [8].

shown that the relationships between the deposition weight and EPD-related process parameters such as applied voltage and time were linear, which is all in good agreement with EPD theoretical principles. The optimum voltage and time of the EPD process was 50 V and 10 minutes, respectively, to achieve a high quality film on a copper substrate. An investigation of the morphology and microstructures of the green deposited films showed that a high quality, crack-free thick film of p-type Bi_2Te_3 has been achieved for TE applications.

ACKNOWLEDGMENT

This work has been supported by the Australian Government Research Training Program Scholarship and The University of Adelaide.

REFERENCES

- [1] Snyder GJ, Toberer ES. Complex thermoelectric materials. *Nature Materials*. 2008; 7: 105-14.
- [2] Shakouri A. Recent developments in semiconductor thermoelectric physics and materials. *Annual Review of Materials Research*. 2011;41: 399-431.
- [3] Dresselhaus MS, Chen G, Tang MY, Yang RG, Lee H, Wang DZ, et al. New directions for low-dimensional thermoelectric materials. *Advanced Materials*. 2007; 19: 1043-53.
- [4] Hamid Elsheikh M, Shnawah DA, Sabri MFM, Said SBM, Haji Hassan M, Ali Bashir MB, et al. A review on thermoelectric renewable energy: Principle parameters that affect their performance. *Renewable and Sustainable Energy Reviews*. 2014;30:337-55.
- [5] Koumoto K, Terasaki I, Funahashi R. Complex oxide materials for potential thermoelectric applications. *MRS Bulletin*. 2006;31:206-10.
- [6] LeBlanc S, Yee SK, Scullin ML, Dames C, Goodson KE. Material and manufacturing cost considerations for thermoelectrics. *Renewable and Sustainable Energy Reviews*. 2014;32:313-27.
- [7] DiSalvo FJ. Thermoelectric cooling and power generation. *Science*. 1999;285:703-6.
- [8] Besra L, Liu M. A review on fundamentals and applications of electrophoretic deposition (EPD). *Progress in Materials Science*. 2007;52:1-61.
- [9] Corni I, Ryan MP, Boccaccini AR. Electrophoretic deposition: From traditional ceramics to nanotechnology. *Journal of the European Ceramic Society*. 2008;28:1353-67.
- [10] Ferrari B, Moreno R. EPD kinetics: A review. *Journal of the European Ceramic Society*. 2010;30:1069-78.
- [11] Boccaccini AR, Zhitomirsky I. Application of electrophoretic and electrolytic deposition techniques in ceramics processing. *Current Opinion in Solid State and Materials Science*. 2002;6:251-60.
- [12] Wei M, Ruys AJ, Milthorpe BK, Sorrell CC, Evans JH. Electrophoretic deposition of hydroxyapatite coatings on metal substrates: A nanoparticulate dual-coating approach. *Journal of Sol-Gel Science and Technology*. 2001;21:39-48.
- [13] Talebi T, Raissi B, Maghsoudipour A. Electrophoretic deposition of YSZ electrolyte on porous NiO-YSZ substrate for solid oxide fuel cells. *Key Engineering Materials*. 2009;412:215-20.
- [14] Shane MJ, Talbot JB, Kinney BG, Sluzky E, Hesse KR. Electrophoretic deposition of phosphors. *Journal of Colloid and Interface Science*. 1994;165:334-40.
- [15] Put S, Vleugels J, Anné G, Van der Biest O. Functionally graded ceramic and ceramic-metal composites shaped by electrophoretic deposition. *Colloids and Surfaces A: Physicochemical and Engineering Aspects*. 2003;222:223-32.
- [16] Boccaccini AR, Cho J, Subhani T, Kaya C, Kaya F. Electrophoretic deposition of carbon nanotube-ceramic nanocomposites. *Journal of the European Ceramic Society*. 2010;30:1115-29.
- [17] Maiti HS, Datta S, Basu RN. High-Tc Superconductor Coating on Metal Substrates by an Electrophoretic Technique. *Journal of the American Ceramic Society*. 1989;72:1733-5.
- [18] Shan W, Zhang Y, Yang W, Ke C, Gao Z, Ye Y, et al. Electrophoretic deposition of nanosized zeolites in non-aqueous medium and its

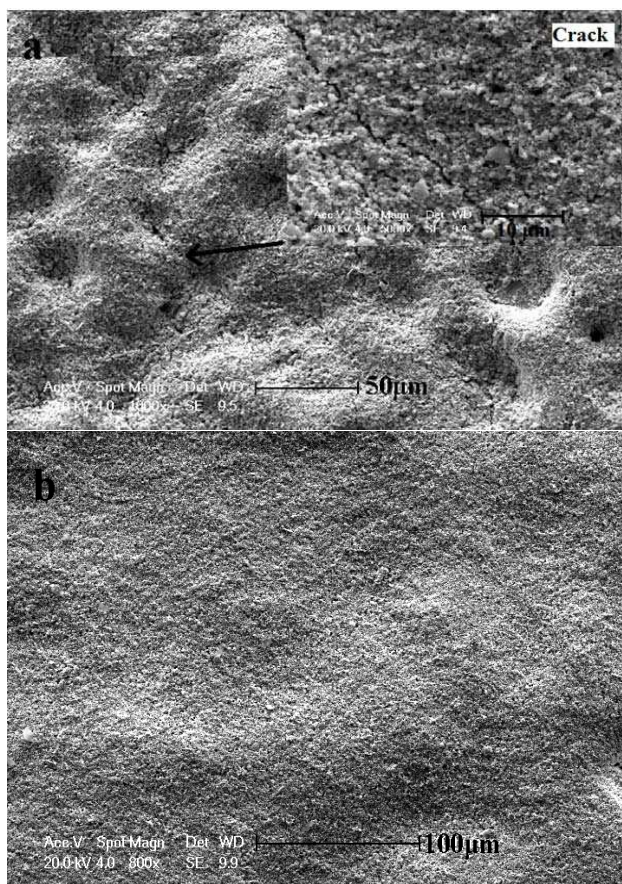


Fig. 4 The SEM images of green Bi_2Te_3 films at two different EPD voltages, (a) 100V and (b) 50V

Although the results showed that the films deposited at 100V had a better interfacial adhesion to the substrate and higher deposition weight, there were small cracks in the film, and the surface was not smooth enough, as can be seen from Fig. 4 (a). Therefore, a voltage of 50 V is considered as the optimum deposition voltage for this suspension because it has deposited a film with higher quality.

IV. CONCLUSION

In summary, a crack-free and high quality p-type Bi_2Te_3 film has been successfully deposited by EPD for TE applications for the first time. A stable EPD suspension of p-type Bi_2Te_3 has been prepared in a mixture of acetone-ethanol with the use of triethanolamine as a stabilizer. The results have

- application in fabricating thin zeolite membranes. *Microporous and Mesoporous Materials*. 2004;69:35-42.
- [19] Hamaker HC. Formation of a deposit by electrophoresis. *Transactions of the Faraday Society*. 1940;35:279-87.
- [20] Ata MS, Zhitomirsky I. Electrophoretic nanotechnology of ceramic films. *Advances in Applied Ceramics: Structural, Functional & Bioceramics*. 2012;111:345-50.
- [21] Boccaccini AR, Cho J, Roether JA, Thomas BJC, Jane Minay E, Shaffer MSP. Electrophoretic deposition of carbon nanotubes. *Carbon*. 2006;44:3149-60.
- [22] Van Tassel JJ, Randall CA. Ionic Gradients at an Electrode above the Equilibrium Limit Current. 1. Concentration and Charge Gradients in an Immobile Electrolyte. *The Journal of Physical Chemistry C*. 2007;111:3341-8.
- [23] Van Tassel JJ, Randall CA. Role of ion depletion in the electrophoretic deposition of alumina powder from ethanol with increasing quantities of HCl. *Journal of Materials Science*. 2006;41:8031-46.
- [24] Nobuyuki K, Takeyo T, Hiromasa S, Touru H. Preparation of Various Oxide Films by an Electrophoretic Deposition Method: A Study of the Mechanism. *Japanese Journal of Applied Physics*. 1995;34:1643.