



Solomon Islands Government

Statistical Bulletin: No: 6/2017

VISITOR STATISTICS

(Fourth Quarter 2016)

Solomon Islands National Statistics Office

Ministry of Finance

Honiara

TABLE OF CONTENTS

Introduction.....	3
COMMENTARY OF RESULTS	5
<i>International Arrivals</i>	5
<i>Arrivals by Country of Residence</i>	5
<i>Visitor by Month</i>	5
<i>Tourists</i>	5
<i>Visitors by Purpose of Visit</i>	5
<i>Visitor by Age Group</i>	5
<i>Visitor by Occupation:</i>	5
<i>Visitor by Carrier</i>	5

Charts

Chart 1: Arrivals by Category, 4th Quarter 2016.....	6
Chart 2: Visitor Arrivals by Country of Residence by quarter: 4th Quarter 2016.....	7
Chart 3: Visitor Arrivals by Month, 2013 to 4th Quarter 2016.....	8
Chart 4: Tourist Arrivals by Country of Residence, 4th Quarter 2016.....	9
Chart 5: Visitor Arrivals by Country of Residence by Purpose of Visit, 4th Quarter 2016.....	10
Chart 6: Visitor Arrivals by Age group category by sex, 4th Quarter 2016.....	11
Chart 7: Visitor Arrivals by Occupation by sex, 4th Quarter 2016.....	12
Chart 8: Visitor Arrivals by Carrier by sex, 4th Quarter 2016.....	13

Tables

Table 1: Total Arrivals Classified by Purpose of Travel by Sex by Year by Quarter: 4th Quarter 2016.....	6
Table 2: Visitors Arrivals by Country of Residence by Year by Quarter: 4th Quarter 2016	7
Table 3: Visitors Arrivals by Month: 2007 to 4th Quarter 2016.....	8
Table 4: Visitors Classified as Tourists by Country of Residence by Year, Quarter and Average Length..... of Stay: 1 st quarter 2015 to 4th Quarter 2016.....	9
Table 5: Visitor Arrivals by Country of Residence by Purpose of Visit by sex: 4th Quarter 2016.....	10
Table 6: Visitors Arrivals by Country of Residence by Age Groups by sex: 4th Quarter 2016.....	11
Table 7: Visitors Arrivals by Country of Residence by Occupation and Sex: 4th Quarter 2016	12
Table 8: Visitors Arrivals by Country of Residence by Carrier By Sex: 4th Quarter 2016.....	13

Appendix 1	14
<i>Concepts and Definitions</i>	14
Appendix 2.....	15

Table 9: Intending Resident Arrivals by Country of residence by Occupation and sex: 4th Quarter 2016	15
Table 10: Intending Resident Arrivals by country of Residence by Age Groups by Sex: 4th Quarter 2016	16
Table 11: Returning Resident Arrivals by country of Residence by Age Groups and sex: 4th Quarter 2016 ..	17
Table 12: Returning Resident Arrivals by country of Residence by Occupation and sex: 4th Quarter 2016 ...	18

Introduction

This quarterly bulletin is produced by the National Statistics Office NSO in the Ministry of Finance and Treasury. It provides information on international arrivals comprised of the returning resident, intending resident, and visitor. The explanation of these categories is provided in Appendix 1 of the bulletin.

Visitor category comprised the bigger share of the bulletin, (portrayed in tables 1 to 8); compared to the returning and intending resident category portrayed in Tables 1, and 9 to 12. The bulletin includes twelve tables and eight charts stretched over cross-field tabulation, preferably to meet information need of local, regional, and international researchers.

The information captured through a self fill Disembarkation form that was completed by all disembarking passengers. The forms were collected by Immigration officials at international check-in counters on arrival. The coverage of the bulletin is complete.

Sheer acknowledgement is owed to the Immigration Department for their continuous support of this bulletin, by providing an office space and permitting the statistics office to input completed forms. With the official arrangement in-placed between the Statistics and Immigration departments this bulletin is possible.

The inclusion of four new tables 9 to 12 in Appendix 2 of the bulletin anticipates to complete the distribution portrait of Intending and Returning resident. The distribution is by age groups, occupation and by country of usual residence.

Data limitations, highlighted in the previous bulletin still remain, though some have substantially improved but noted again for ease of reference as follows:-

- Data entry duplication by the Immigration and Statistics departments was a long standing issue. Discussion of the issues had been made by the two departments, though resolution has been recognized, this was yet to be put in place.
- Timeliness of visitor statistics has improved but the bulletin may be delayed by the production process.
- The information contained in the bulletin is based on information captured from the data source by the SINSO.
- The monetary value of the industry is not available and thus not possible in this bulletin. The concepts and definitions of the arrival categories were included in Appendix 1. The symbols that are likely to be used are:

-	zero if representing a value
-	negative change if representing a percentage change
+	positive change if representing a percentage change
p	preliminary figure, subject to revision
r	revised
e	estimate
n/a	not available

For more information contact the Statistics Office, Department of Finance and Treasury:

TELEPHONE : (677) 22154/21427

FACSMILE : (677) 23775

E-MAIL : STATS-management@mof.gov.sb

: STATS-SocialDemography@mof.gov.sb

WEBSITE : <http://www.statistics.gov.sb>

Contact persons: 1. Mrs. Anterlyn **TUZAKANA**, Principal Statistician

2. Mrs. Loyce **PABULU**, Principal Statistician

3. Mr. Josephat **TAKO**, Assistant Statistician

COMMENTARY OF RESULTS

International Arrivals

Total Arrivals for the fourth quarter of 2016 was 14,638. This is an increase of 35.4% compared to the previous quarter (4th Quarter 2016). Compared to the same quarter a year ago, an increase of 17.0% was recorded.

Arrivals classified by the category for the fourth quarter of 2016 showed that returning resident comprise of 52%. Visitors recorded 47% and the remaining 1% was recorded for intending resident.

Visitors' arrival for the fourth quarter showed an increase of 20.3% to 6,813 compared to the third quarter figure of 5,665. Compared to the same quarter in 2015, an increase of 14.5% was recorded. Table 1, showed visitor and returning resident categories comprised the larger proportion of all arrivals while the intending resident represents the lesser share during the quarter. Chart 1 gives a clear picture of all the categories.

Visitor by Country of Residence

Arrivals by country of residence for fourth quarter of the year showed that Australians (40.0%) continues and remain the frequent travellers to Solomon Islands, followed by Other Asia (11.5%), PNG (6.9%), Fiji (6.5%), Vanuatu (6.1%), NZ (6.0%) and US (4.9%). Table 2 showed further detailed information.

Visitor by Month

Visitors by monthly arrivals for the quarter showed that December has the highest number of arrivals with 2,357 persons. This was followed by the month of October with a recorded total of 2,257 persons and November the least with 2,199 persons.

Tourists

Tourist¹ arrivals for fourth quarter of the year recorded a total of 2,447 persons and they spent an average of 14 days in the country. The highest number of tourists recorded for the quarter comes from Australia (43%) and staying in the country for an average of 13 days. This was followed by Other Asia (7.7%), US (7.6%), PNG (7.4%), Vanuatu and Japan (4.6%), and Other Europe (4.4%).

Visitor by Purpose of Visit

Distribution of visitors by purpose of visit revealed that Holiday & Vocation (32.9%) as most popular during the quarter. This was followed by Business & Conference (25.8%), other (20.6%), Visit friends & relatives (17.7%) and Transit & stopover the least with (3.0%).

Visitor by Age Group

Visitor Arrivals by broad age groups showed that 72.6% of arrivals were in the 25years to 64years age range. The younger and the older age brackets represent 20% while the remaining 7.4% represents visitors who did not state their age. Male represents 65.3% of the arrival and female 34.7%. (Refer to Chart 6).

Visitor by Occupation

Visitor by occupational category revealed that Professional and Technical (33.7%) recorded the highest during the quarter. This was followed by those who stated other (33.3%), Administration and managerial (10.5%), No Work (9.2%), Service Worker (4.7%) and Production and Related Work (3.9%). Table 7 further revealed that Australia dominated most of the categories of occupations during the quarter. Refer to Table 7 for further analysis.

Visitor by Carrier

The most popular carriers during the quarter were Solomon Airlines (51.4%) followed by Fiji Airways (19.4%), Virgin Australia (16.9%) and unscheduled (1.2%).

¹ Refer to Appendix 1 for the definition

Table 1: Total Arrivals Classified by Purpose of Travel by Sex, by Year by Quarter: 4th Quarter 2016

Year / Quarter	Returning Resident						Intending Resident			Visitor			Total			
	Solomon Islander			Non-Solomon Islander			All	M	F	T	M	F	T	M	F	All
	M	F	T	M	F	T										
2013 1 st	1,966	1,111	3,077	6	0	6	3,083	961	338	1,299	4,034	1,284	5,318	6,967	2,733	9,700
2 nd	2,422	1,344	3,766	1	2	3	3,769	764	279	1,043	4,531	1,664	6,195	7,718	3,289	11,007
3 rd	2,442	1,415	3,857	5	3	8	3,865	715	228	943	5,007	1,880	6,887	8,169	3,526	11,695
4 th	3,577	2,051	5,628	12	12	24	5,652	620	224	844	4,294	1,737	6,031	8,503	4,024	12,527
2014 1 st	2,100	1,287	3,387	3	3	6	3,393	841	318	1,159	3,685	1,069	4,754	6,629	2,677	9,306
2 nd	2,511	1,231	3,742	126	56	182	3,924	604	204	808	3,506	1,419	4,925	6,747	2,910	9,657
3 rd	2,399	1,295	3,694	5	4	9	3,703	823	244	1,067	3,792	1,691	5,483	7,019	3,234	10,253
4 th	3,290	1,937	5,227	20	5	25	5,252	692	147	839	3,481	1,427	4,908	7,483	3,516	10,999
2015 1 st	2,356	1,530	3,886	9	6	15	3,901	843	280	1,123	3,251	1,148	4,399	6,459	2,964	9,423
2 nd	2,770	1,535	4,305	14	3	17	4,322	825	201	1,026	3,958	1,604	5,562	7,567	3,343	10,910
3 rd	3,022	1,749	4,771	14	6	20	4,791	348	127	475	3,864	1,850	5,714	7,248	3,732	10,980
4 th	3,784	2,422	6,206	15	9	24	6,230	256	73	329	3,983	1,965	5,948	8,038	4,469	12,507
2016 1 st	2,651	1,654	4,305	5	5	10	4,315	301	101	402	3,603	1,434	5,037	6,560	3,194	9,754
2 nd	3,547	1,945	5,492	11	7	18	5,510	291	66	357	3,917	1,762	5,679	7,766	3,780	11,546
3 rd	2,977	1,845	4,822	6	4	10	4,832	230	83	313	3,892	1,773	5,665	7,105	3,705	10,810
4 th	4,685	2,933	7,618	19	4	23	7,641	142	42	184	4,449	2,364	6,813	9,295	5,343	14,638
Percentage change																
13 ^{4th} -14 ^{1st}	-41.3	-37.3	-39.8	-75.0	-75.0	-75.0	-40.0	35.6	42.0	37.3	-14.2	-38.5	-21.2	-22.0	-33.5	-25.7
13 ^{2nd} -14 ^{2nd}	3.7	-8.4	-0.6	12500.0	2700.0	5966.7	4.1	-20.9	-26.9	-22.5	-22.6	-14.7	-20.5	-12.6	-11.5	-12.3
14 ^{1st} -14 ^{2nd}	19.6	-4.4	10.5	4100.0	1766.7	2933.3	15.6	-28.2	-35.8	-30.3	-4.9	32.7	3.6	1.8	8.7	3.8
13 ^{3rd} -14 ^{3rd}	-1.8	-8.5	-4.2	0.0	33.3	12.5	-4.2	15.1	7.0	13.1	-24.3	-10.1	-20.4	-14.1	-8.3	-12.3
14 ^{2nd} -14 ^{3rd}	-4.5	5.2	-1.3	-96.0	-92.9	-95.1	-5.6	36.3	19.6	32.1	8.2	19.2	11.3	4.0	11.1	6.2
13 ^{4th} -14 ^{4th}	-8.0	-5.6	-7.1	66.7	-58.3	4.2	-7.1	11.6	-34.4	-0.6	-18.9	-17.8	-18.6	-12.0	-12.6	-12.2
14 ^{3rd} -14 ^{4th}	37.1	49.6	41.5	300.0	25.0	177.8	41.8	-15.9	-39.8	-21.4	-8.2	-15.6	-10.5	6.6	8.7	7.3
14 ^{1st} -15 ^{1st}	12.2	18.9	14.7	200.0	100.0	150.0	15.0	0.2	-11.9	-3.1	-11.8	7.4	-7.5	-2.6	10.7	1.3
14 ^{4th} -15 ^{1st}	-28.4	-21.0	-25.7	-55.0	20.0	-40.0	-25.7	21.8	90.5	33.8	-6.6	-19.6	-10.4	-13.7	-15.7	-14.3
14 ^{2nd} -15 ^{2nd}	10.3	24.7	15.0	-88.9	-94.6	-90.7	10.1	36.6	-1.5	27.0	12.9	13.0	12.9	12.2	14.9	13.0
15 ^{1st} -15 ^{2nd}	17.6	0.3	10.8	55.6	-50.0	13.3	10.8	-2.1	-28.2	-8.6	21.7	39.7	26.4	17.2	12.8	15.8
14 ^{3rd} -15 ^{3rd}	26.0	35.1	29.2	180.0	50.0	122.2	29.4	-57.7	-48.0	-55.5	1.9	9.4	4.2	3.3	15.4	7.1
15 ^{2nd} -15 ^{3rd}	9.1	13.9	10.8	0.0	100.0	17.6	10.9	-57.8	-36.8	-53.7	-2.4	15.3	2.7	-4.2	11.6	0.6
14 ^{4th} -15 ^{4th}	15.0	25.0	18.7	-25.0	80.0	-4.0	18.6	-63.0	-50.3	-60.8	14.4	37.7	21.2	7.4	27.1	13.7
15 ^{3rd} -15 ^{4th}	25.2	38.5	30.1	7.1	50.0	20.0	30.0	-26.4	-42.5	-30.7	3.1	6.2	4.1	10.9	19.7	13.9
15 ^{1st} -16 ^{1st}	12.5	8.1	10.8	-44.4	-16.7	-33.3	10.6	-64.3	-63.9	-64.2	10.8	24.9	14.5	1.6	7.8	3.5
15 ^{4th} -16 ^{1st}	-29.9	-31.7	-30.6	-66.7	-44.4	-58.3	-30.7	17.6	38.4	22.2	-9.5	-27.0	-15.3	-18.4	-28.5	-22.0
15 ^{2nd} -16 ^{2nd}	28.1	26.7	27.6	-21.4	133.3	5.9	27.5	-64.7	-67.2	-65.2	-1.0	9.9	2.1	2.6	13.1	5.8
16 ^{1st} -16 ^{2nd}	33.8	17.6	27.6	120.0	40.0	80.0	27.7	-3.3	-34.7	-11.2	8.7	22.9	12.7	18.4	18.3	18.4
15 ^{3rd} -16 ^{3rd}	-1.5	5.5	1.1	-57.1	-33.3	-50.0	0.9	-33.9	-34.6	-34.1	0.7	-4.2	-0.9	-2.0	-0.7	-1.5
16 ^{2nd} -16 ^{3rd}	-16.1	-5.1	-12.2	-45.5	-42.9	-44.4	-12.3	-21.0	25.8	-12.3	-0.6	0.6	-0.2	-8.5	-2.0	-6.4
15 ^{4th} -16 ^{4th}	23.8	21.1	22.8	26.7	-55.6	-4.2	22.6	-44.5	-42.5	-44.1	11.7	20.3	14.5	15.6	19.6	17.0
16 ^{3rd} -16 ^{4th}	57.4	59.0	58.0	216.7	0.0	130.0	58.1	-38.3	-49.4	-41.2	14.3	33.3	20.3	30.8	44.2	35.4

Chart 1: Arrivals by category 4th quarter 2016

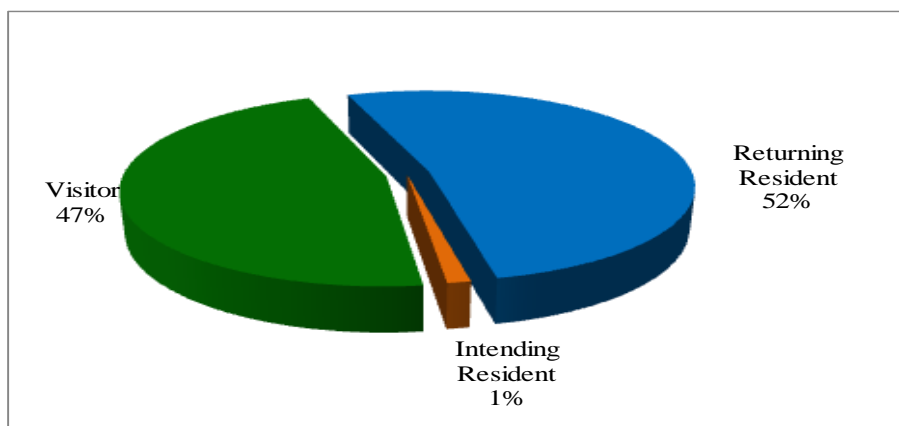


Table 2: Visitor Arrivals by Country of Residence by Year by Quarter: 4th Quarter 2016

Country of Usual Residence	2014					2015					2016						
	Q3	Q4	Total	Q1	Q2	Q3	Q4	Total	Q1	Q2	Q3	Q4	Total	Q1	Q2	Q3	Q4
Australia	3,001	2,849	11,181	2088	2,225	2,521	2,300	9,134	1,750	2,519	2,599	2,641	9,509	2,024	2,445	2,344	2,726
PNG	621	523	2,019	383	260	275	325	1,243	323	398	236	384	1,341	307	243	361	468
US	357	248	1,161	231	362	324	220	1,137	329	322	388	374	1,413	359	444	349	332
NZ	607	386	1,905	277	343	404	382	1,406	281	376	439	355	1,451	279	439	418	408
UK	152	94	460	65	99	77	96	337	69	111	90	117	387	93	82	90	82
Japan	179	178	601	137	84	172	112	505	124	91	232	134	581	122	83	158	189
Germany	35	49	136	15	30	35	22	102	25	26	24	34	109	35	29	53	44
Canada	40	45	148	38	43	42	26	149	28	34	31	60	153	37	44	23	62
Oth.Pacific	202	228	760	139	81	184	167	571	127	139	126	188	580	122	149	156	238
Vanuatu	191	178	804	117	171	100	141	529	109	152	162	186	609	175	131	148	414
Hong Kong	33	14	81	35	11	28	21	95	25	32	18	18	93	21	16	32	30
Fiji	528	397	1,800	351	361	273	270	1,255	268	405	358	360	1,391	351	365	406	440
Other Asia	743	604	2,625	689	580	658	497	2,424	603	609	624	590	2,426	720	842	670	785
Netherlands	24	23	63	7	18	13	11	49	11	11	12	21	55	21	17	24	18
Oth.Europe	70	107	287	119	76	130	103	428	101	109	113	119	442	111	101	131	156
France	26	25	93	21	19	33	13	86	10	15	22	130	177	23	24	32	38
Italy	16	33	83	14	10	21	30	75	21	16	10	14	61	32	11	24	28
China	-	-	-	-	103	167	155	425	164	177	212	189	742	166	194	221	246
Oth.Country	62	50	224	28	49	26	17	120	31	20	18	34	103	39	20	25	109
Total	6,887	6,031	24,431	4,754	4,925	5,483	4,908	20,070	4,399	5,562	5,714	5,948	21,623	5,037	5,679	5,665	6,813
Percentage																	
Australia	43.6	47.2	45.8	43.9	45.2	46.0	46.9	45.5	39.8	45.3	45.5	44.4	44.0	40.2	43.1	41.4	40.0
PNG	9.0	8.7	8.3	8.1	5.3	5.0	6.6	6.2	7.3	7.2	4.1	6.5	6.2	6.1	4.3	6.4	6.9
US	5.2	4.1	4.8	4.9	7.4	5.9	4.5	5.7	7.5	5.8	6.8	6.3	6.5	7.1	7.8	6.2	4.9
NZ	8.8	6.4	7.8	5.8	7.0	7.4	7.8	7.0	6.4	6.8	7.7	6.0	6.7	5.5	7.7	7.4	6.0
UK	2.2	1.6	1.9	1.4	2.0	1.4	2.0	1.7	1.6	2.0	1.6	2.0	1.8	1.8	1.4	1.6	1.2
Japan	2.6	3.0	2.5	2.9	1.7	3.1	2.3	2.5	2.8	1.6	4.1	2.3	2.7	2.4	1.5	2.8	2.8
Germany	0.5	0.8	0.6	0.3	0.6	0.6	0.4	0.5	0.6	0.5	0.4	0.6	0.5	0.7	0.5	0.9	0.6
Canada	0.6	0.7	0.6	0.8	0.9	0.8	0.5	0.7	0.6	0.6	0.5	1.0	0.7	0.7	0.8	0.4	0.9
Oth.Pacific	2.9	3.8	3.1	2.9	1.6	3.4	3.4	2.8	2.9	2.5	2.2	3.2	2.7	2.4	2.6	2.8	3.5
Vanuatu	2.8	3.0	3.3	2.5	3.5	1.8	2.9	2.6	2.5	2.7	2.8	3.1	2.8	3.5	2.3	2.6	6.1
Hong Kong	0.5	0.2	0.3	0.7	0.2	0.5	0.4	0.5	0.6	0.6	0.3	0.3	0.4	0.4	0.3	0.6	0.4
Fiji	7.7	6.6	7.4	7.4	7.3	5.0	5.5	6.3	6.1	7.3	6.3	6.1	6.4	7.0	6.4	7.2	6.5
Oth.Asia	10.8	10.0	10.7	14.5	11.8	12.0	10.1	12.1	13.7	10.9	10.9	9.9	11.2	14.3	14.8	11.8	11.5
Netherlands	0.3	0.4	0.3	0.1	0.4	0.2	0.2	0.2	0.3	0.2	0.2	0.4	0.3	0.4	0.3	0.4	0.3
Oth.Europe	1.0	1.8	1.2	2.5	1.5	2.4	2.1	2.1	2.3	2.0	2.0	2.0	2.0	2.2	1.8	2.3	2.3
France	0.4	0.4	0.4	0.4	0.4	0.6	0.3	0.4	0.2	0.3	0.4	2.2	0.8	0.5	0.4	0.6	0.6
Italy	0.2	0.5	0.3	0.3	0.2	0.4	0.6	0.4	0.5	0.3	0.2	0.2	0.3	0.6	0.2	0.4	0.4
China ¹	-	-	-	-	2.1	3.0	3.2	2.1	3.7	3.2	3.7	3.2	3.4	3.3	3.4	3.9	3.6
Oth.Country	0.9	0.8	0.9	0.6	1.0	0.5	0.3	0.6	0.7	0.4	0.3	0.6	0.5	0.8	0.4	0.4	1.6
Total	100.0	100.0	100.0	100.0	100.0	100.0	100.0	100.0	100.0	100.0	100.0	100.0	100.0	100.0	100.0	100.0	100.0

¹Figures for 'China' for previous quarters was included in 'Other Asia'

Chart 2: Visitors Arrival by Country of residence by quarter, 4th Quarter 2016

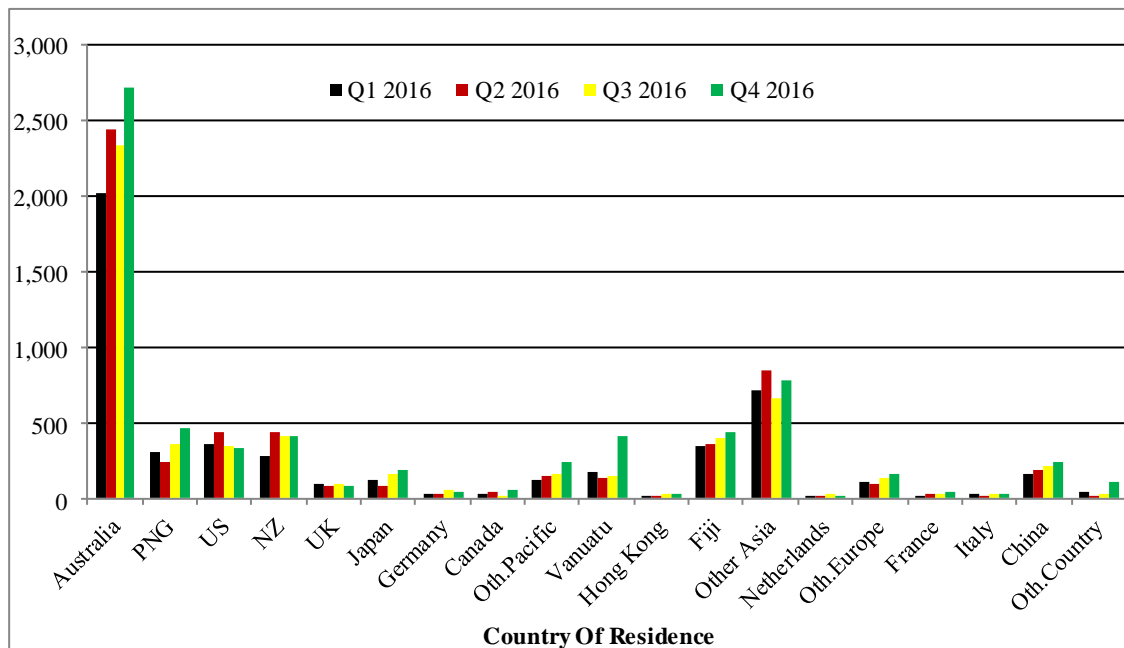


Table 3: Visitor Arrivals by Month: 2007 – 4th Quarter 2016

Month	2007	2008	2009	2010	2011	2012	2013	2014	2015	2016
January	546	889	1,602	1,235	1,600	1,383	1,590	1,415	1,259	1,655
February	1,020	1,282	1,422	1,209	1,658	1,591	1,544	1,523	1,465	1,707
March	1,251	802	1,249	1,766	1,861	1,677	2,184	1,816	1,675	1,675
April	1,452	1,388	1,499	1,820	1,736	1,839	2,021	1,514	1,750	1,799
May	1,137	1,261	1,393	1,137	1,760	1,968	1,857	1,462	1,681	1,896
June	1,265	1,552	1,724	1,797	2,009	3,122	2,317	1,949	2,131	1,984
July	822	1,692	1,603	2,264	2,185	2,865	2,574	2,114	2,077	2,319
August	1,299	1,469	1,520	1,845	1,900	2,133	2,022	1,639	1,426	1,918
September	1,299	1,457	1,659	2,153	2,159	2,309	2,291	1,730	2,211	1,428
October	1,260	1,399	1,709	1,813	1,931	1,929	2057	1,798	1,748	2,257
November	1,246	1,545	1,475	1,624	2,195	1,545	1,981	1,515	2,101	2,199
December	1,151	1,528	1,405	1,858	1,947	1,564	1,993	1,595	2,099	2,357
Total	13,748	16,264	18,260	20,521	22,941	23,925	24,431	20,070	19,524	23,194
Percentage										
January	4.0	5.5	8.8	5.5	7.0	5.8	6.5	7.1	6.4	7.1
February	7.4	7.9	7.8	5.4	7.2	6.6	6.3	7.6	7.5	7.4
March	9.1	4.9	6.8	7.8	8.1	7.0	8.9	9.0	8.6	7.2
April	10.6	8.5	8.2	8.1	7.6	7.7	8.3	7.5	9.0	7.8
May	8.3	7.8	7.6	5.0	7.7	8.2	7.6	7.3	8.6	8.2
June	9.2	9.5	9.4	8.0	8.8	13.0	9.5	9.7	10.9	8.6
July	6.0	10.4	8.8	10.0	9.5	12.0	10.5	10.5	10.6	10.0
August	9.4	9.0	8.3	8.2	8.3	8.9	8.3	8.2	7.3	8.3
September	9.4	9.0	9.1	9.6	9.4	9.7	9.4	8.6	11.3	6.2
October	9.2	8.6	9.4	8.0	8.4	8.1	8.4	9.0	9.0	9.7
November	9.1	9.5	8.1	7.2	9.6	6.5	8.1	7.5	10.8	9.5
December	8.4	9.4	7.7	8.2	8.5	6.5	8.2	7.9	10.8	10.2
Total	100.0	100.0	100.0	100.0	100.0	100.0	100.0	100.0	100.0	100.0

Chart 3: Visitors Arrival by month, 2013 – 4th quarter 2016

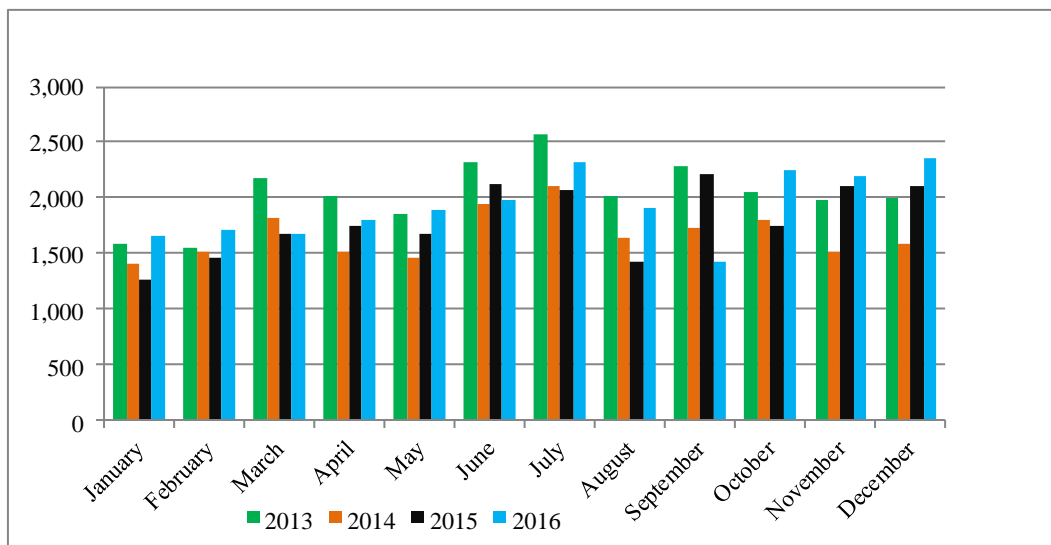


Table 4: Visitors, classified as tourists by Country of Residence by Year, Quarter and Average length of stay: 1st Quarter 2015 – 4th Quarter 2016

Country of Usual Residence	2015								2016							
	Quarter 1		Quarter 2		Quarter 3		Quarter 4		Quarter 1		Quarter 2		Quarter 3		Quarter 4	
	tourist	day	tourist	day	tourist	day	tourist	day	tourist	day	tourist	day	tourist	day	tourist	day
Australia	476	14.4	575	11.7	920	10.8	935	12.3	649	11.2	912	11.7	896	10.2	1,050	13.2
PNG	49	6.7	67	4.0	41	10.0	97	20.3	66	8.0	37	11.1	92	6.3	182	13.3
US	126	7.4	103	14.2	141	11.0	227	11.0	162	7.8	283	11.9	190	12.1	185	12.2
NZ	21	7.5	31	21.7	76	12.6	83	19.2	32	18.8	66	15.4	97	12.6	87	14.1
UK	33	19.6	29	14.7	47	15.3	73	15.5	31	13.0	38	16.9	44	13.9	30	15.1
Japan	48	7.0	20	7.1	121	6.0	60	7.0	49	9.0	32	11.3	75	6.4	113	11.3
Germany	14	6.1	12	18.7	16	16.1	23	19.7	17	20.9	19	13.5	42	9.6	36	14.4
Canada	17	13.9	17	12.5	12	14.8	43	8.8	21	13.6	22	8.9	12	15.8	44	12.9
Oth.Pacific	11	11.3	15	16.6	23	8.9	40	15.1	25	8.6	17	7.6	16	7.7	37	8.2
Vanuatu	20	5.1	18	14.4	29	9.6	53	19.8	28	16.2	15	13.9	22	9.9	113	15.6
Hong Kong	7	12.1	12	7.4	4	18.8	6	8.0	8	4.9	10	12.2	12	8.8	22	10.9
Fiji	23	18.2	24	26.6	30	31.2	49	24.7	51	12.9	46	20.8	37	10.7	89	17.0
Oth.Asia	129	20.9	135	18.2	128	24.6	123	18.7	189	14.9	222	14.8	174	18.4	189	18.7
Netherlands	8	11.3	2	11.5	2	6.0	11	10.4	14	16.2	10	12.0	17	14.1	6	11.0
Oth.Europe	64	11.7	47	11.3	68	9.3	70	15.3	63	9.7	59	15.6	91	11.0	107	12.4
France	3	14.7	4	11.0	16	10.5	103	6.8	10	8.7	14	13.4	21	12.7	21	12.6
Italy	6	16.5	6	5.2	3	24.0	3	51.3	13	19.8	5	13.4	16	11.1	19	13.9
China ¹	41	20.9	50	16.1	77	24.5	69	18.9	50	17.0	77	15.1	98	13.8	83	15.7
Oth.Country	9	29.7	3	10.0	6	17.3	19	14.5	19	16.3	3	2.0	6	12.5	34	11.9
Total	1,105	13.7	1,170	13.1	1,760	12.7	2,087	13.8	1,497	11.8	1,887	12.8	1,958	11.3	2,447	13.7

¹Figures for 'China' for previous quarters was included in 'Other Asia'

Chart 4: Tourist Arrivals by Country of Residence, 4th Quarter 2016

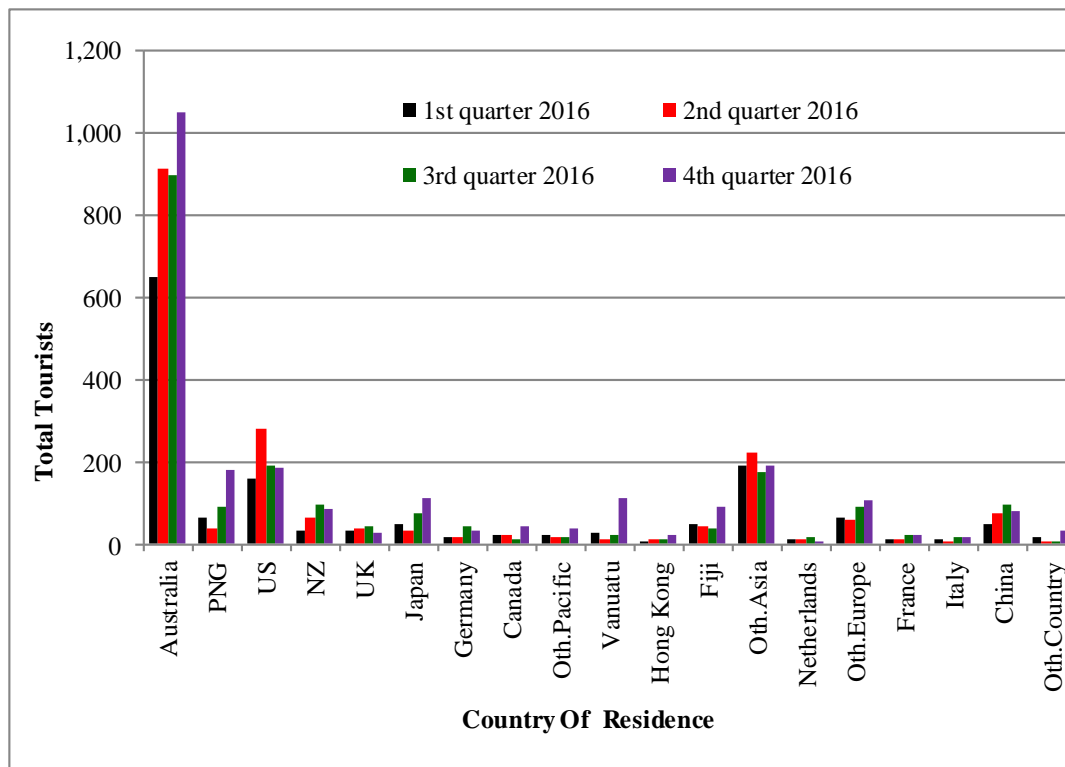


Table 5: Visitor Arrivals by Country of Residence by Purpose of Visit by Sex: 4th Quarter 2016

Country of Usual Residence	Business & Conference			Holiday & Vocation			Transit & Stopover			Visit friends/Relatives			Other			Total		
	M	F	T	M	F	T	M	F	T	M	F	T	M	F	T	M	F	All
Australia	489	174	663	581	436	1017	27	6	33	258	250	508	345	160	505	1,700	1,026	2,726
PNG	83	19	102	62	62	124	37	21	58	69	54	123	52	9	61	303	165	468
US	33	16	49	105	70	175	7	3	10	21	14	35	43	20	63	209	123	332
NZ	109	43	152	43	27	70	17	0	17	41	39	80	67	22	89	277	131	408
UK	20	3	23	17	12	29	0	1	1	4	8	12	16	1	17	57	25	82
Japan	45	6	51	89	23	112	1	0	1	5	0	5	10	10	20	150	39	189
Germany	2	1	3	24	11	35	1	0	1	4	0	4	0	1	1	31	13	44
Canada	4	1	5	27	16	43	1	0	1	5	4	9	1	3	4	38	24	62
Oth.Pacific	50	41	91	12	6	18	11	8	19	20	14	34	60	16	76	153	85	238
Vanuatu	38	55	93	41	71	112	1	0	1	35	48	83	45	80	125	160	254	414
Hong Kong	5	0	5	13	9	22	0	0	0	2	0	2	0	1	1	20	10	30
Fiji	116	59	175	30	34	64	18	7	25	43	36	79	70	27	97	277	163	440
Oth.Asia	194	28	222	118	52	170	18	1	19	135	25	160	187	27	214	652	133	785
Netherlands	4	2	6	4	2	6	0	0	0	2	3	5	0	1	1	10	8	18
Oth.Europe	9	10	19	61	41	102	4	1	5	8	6	14	9	7	16	91	65	156
France	5	1	6	14	7	21	0	0	0	2	1	3	8	0	8	29	9	38
Italy	2	1	3	7	8	15	4	0	4	1	0	1	5	0	5	19	9	28
China	54	8	62	56	18	74	6	3	9	23	9	32	51	18	69	190	56	246
Oth.Country	25	6	31	19	12	31	2	1	3	9	6	15	28	1	29	83	26	109
Total	1,287	474	1,761	1,323	917	2,240	155	52	207	687	517	1,204	997	404	1,401	4,449	2,364	6,813
Percentage																		
Australia	17.9	6.4	24.3	21.3	16.0	37.3	1.0	0.2	1.2	9.5	9.2	18.6	12.7	5.9	18.5	62.4	37.6	100.0
PNG	17.7	4.1	21.8	13.2	13.2	26.5	7.9	4.5	12.4	14.7	11.5	26.3	11.1	1.9	13.0	64.7	35.3	100.0
US	9.9	4.8	14.8	31.6	21.1	52.7	2.1	0.9	3.0	6.3	4.2	10.5	13.0	6.0	19.0	63.0	37.0	100.0
NZ	26.7	10.5	37.3	10.5	6.6	17.2	4.2	0.0	4.2	10.0	9.6	19.6	16.4	5.4	21.8	67.9	32.1	100.0
UK	24.4	3.7	28.0	20.7	14.6	35.4	0.0	1.2	1.2	4.9	9.8	14.6	19.5	1.2	20.7	69.5	30.5	100.0
Japan	23.8	3.2	27.0	47.1	12.2	59.3	0.5	0.0	0.5	2.6	0.0	2.6	5.3	5.3	10.6	79.4	20.6	100.0
Germany	4.5	2.3	6.8	54.5	25.0	79.5	2.3	0.0	2.3	9.1	0.0	9.1	0.0	2.3	2.3	70.5	29.5	100.0
Canada	6.5	1.6	8.1	43.5	25.8	69.4	1.6	0.0	1.6	8.1	6.5	14.5	1.6	4.8	6.5	61.3	38.7	100.0
Oth.Pacific	21.0	17.2	38.2	5.0	2.5	7.6	4.6	3.4	8.0	8.4	5.9	14.3	25.2	6.7	31.9	64.3	35.7	100.0
Vanuatu	9.2	13.3	22.5	9.9	17.1	27.1	0.2	0.0	0.2	8.5	11.6	20.0	10.9	19.3	30.2	38.6	61.4	100.0
Hong Kong	16.7	0.0	16.7	43.3	30.0	73.3	0.0	0.0	0.0	6.7	0.0	6.7	0.0	3.3	3.3	66.7	33.3	100.0
Fiji	26.4	13.4	39.8	6.8	7.7	14.5	4.1	1.6	5.7	9.8	8.2	18.0	15.9	6.1	22.0	63.0	37.0	100.0
Oth.Asia	24.7	3.6	28.3	15.0	6.6	21.7	2.3	0.1	2.4	17.2	3.2	20.4	23.8	3.4	27.3	83.1	16.9	100.0
Netherlands	22.2	11.1	33.3	22.2	11.1	33.3	0.0	0.0	0.0	11.1	16.7	27.8	0.0	5.6	5.6	55.6	44.4	100.0
Oth.Europe	5.8	6.4	12.2	39.1	26.3	65.4	2.6	0.6	3.2	5.1	3.8	9.0	5.8	4.5	10.3	58.3	41.7	100.0
France	13.2	2.6	15.8	36.8	18.4	55.3	0.0	0.0	0.0	5.3	2.6	7.9	21.1	0.0	21.1	76.3	23.7	100.0
Italy	7.1	3.6	10.7	25.0	28.6	53.6	14.3	0.0	14.3	3.6	0.0	3.6	17.9	0.0	17.9	67.9	32.1	100.0
China	22.0	3.3	25.2	22.8	7.3	30.1	2.4	1.2	3.7	9.3	3.7	13.0	20.7	7.3	28.0	77.2	22.8	100.0
Oth.Country	22.9	5.5	28.4	17.4	11.0	28.4	1.8	0.9	2.8	8.3	5.5	13.8	25.7	0.9	26.6	76.1	23.9	100.0
Total	18.9	7.0	25.8	19.4	13.5	32.9	2.3	0.8	3.0	10.1	7.6	17.7	14.6	5.9	20.6	65.3	34.7	100.0

Chart 5: Visitors Arrival by Country of Residence by Purpose of Visit, 4th Quarter 2016



Table 6: Visitor Arrivals by Country of Residence by Age Groups by Sex: 4th Quarter 2016

Country of Usual Residence	Age-Group																		Total		
	0-14		15-24		25-34		35-44		45-54		55-64		65+		Not Stated		M	F	All		
	M	F	M	F	M	F	M	F	M	F	M	F	M	F	M	F	M	F	All		
Australia	75	59	137	153	234	177	306	156	357	201	307	155	185	52	99	73	1,700	1,026	2,726		
PNG	16	8	32	22	61	38	61	28	53	28	30	12	8	3	42	26	303	165	468		
US	2	2	7	4	27	14	39	18	39	17	47	37	30	18	18	13	209	123	332		
NZ	8	6	16	15	31	16	39	18	78	34	62	20	30	7	13	15	277	131	408		
UK	0	0	1	0	2	11	11	5	22	1	9	4	6	1	6	3	57	25	82		
Japan	0	1	5	1	13	10	32	9	33	5	25	6	32	6	10	1	150	39	189		
Germany	1	0	1	1	4	4	6	3	9	0	7	4	2	1	1	0	31	13	44		
Canada	0	0	2	3	5	2	3	1	6	6	11	6	8	4	3	2	38	24	62		
Oth.Pacific	2	3	26	4	38	17	38	19	26	18	12	4	3	8	8	12	153	85	238		
Vanuatu	14	23	14	19	23	39	32	62	41	65	12	22	8	8	16	16	160	254	414		
Hong Kong	0	0	0	0	2	0	3	2	4	2	8	0	1	3	2	3	20	10	30		
Fiji	9	3	22	19	65	32	64	34	62	27	23	22	14	5	18	21	277	163	440		
Oth.Asia	10	15	34	11	136	30	165	27	158	24	90	16	18	3	41	7	652	133	785		
Netherlands	0	0	0	0	1	2	1	2	4	0	2	3	2	1	0	0	10	8	18		
Oth.Europe	1	1	2	5	14	11	19	10	26	18	13	14	9	3	7	3	91	65	156		
France	0	0	0	2	12	2	4	1	7	1	1	1	5	1	0	1	29	9	38		
Italy	0	0	1	2	4	2	2	0	7	2	0	2	3	1	2	0	19	9	28		
China	3	0	19	12	59	26	45	10	36	3	13	2	2	0	13	3	190	56	246		
Oth.Country	2	1	3	0	14	7	16	6	20	3	14	3	8	5	6	1	83	26	109		
Total	143	122	322	273	745	440	886	411	988	455	686	333	374	130	305	200	4,449	2,364	6,813		
Percentage																					
Australia	2.8	2.2	5.0	5.6	8.6	6.5	11.2	5.7	13.1	7.4	11.3	5.7	6.8	1.9	3.6	2.7	62.4	37.6	100.0		
PNG	3.4	1.7	6.8	4.7	13.0	8.1	13.0	6.0	11.3	6.0	6.4	2.6	1.7	0.6	9.0	5.6	64.7	35.3	100.0		
US	0.6	0.6	2.1	1.2	8.1	4.2	11.7	5.4	11.7	5.1	14.2	11.1	9.0	5.4	5.4	3.9	63.0	37.0	100.0		
NZ	2.0	1.5	3.9	3.7	7.6	3.9	9.6	4.4	19.1	8.3	15.2	4.9	7.4	1.7	3.2	3.7	67.9	32.1	100.0		
UK	0.0	0.0	1.2	0.0	2.4	13.4	13.4	6.1	26.8	1.2	11.0	4.9	7.3	1.2	7.3	3.7	69.5	30.5	100.0		
Japan	0.0	0.5	2.6	0.5	6.9	5.3	16.9	4.8	17.5	2.6	13.2	3.2	16.9	3.2	5.3	0.5	79.4	20.6	100.0		
Germany	2.3	0.0	2.3	2.3	9.1	9.1	13.6	6.8	20.5	0.0	15.9	9.1	4.5	2.3	2.3	0.0	70.5	29.5	100.0		
Canada	0.0	0.0	3.2	4.8	8.1	3.2	4.8	1.6	9.7	9.7	17.7	9.7	12.9	6.5	4.8	3.2	61.3	38.7	100.0		
Oth.Pacific	0.8	1.3	10.9	1.7	16.0	7.1	16.0	8.0	10.9	7.6	5.0	1.7	1.3	3.4	3.4	5.0	64.3	35.7	100.0		
Vanuatu	3.4	5.6	3.4	4.6	5.6	9.4	7.7	15.0	9.9	15.7	2.9	5.3	1.9	1.9	3.9	3.9	38.6	61.4	100.0		
Hong Kong	0.0	0.0	0.0	0.0	6.7	0.0	10.0	6.7	13.3	6.7	26.7	0.0	3.3	10.0	6.7	10.0	66.7	33.3	100.0		
Fiji	2.0	0.7	5.0	4.3	14.8	7.3	14.5	7.7	14.1	6.1	5.2	5.0	3.2	1.1	4.1	4.8	63.0	37.0	100.0		
Oth.Asia	1.3	1.9	4.3	1.4	17.3	3.8	21.0	3.4	20.1	3.1	11.5	2.0	2.3	0.4	5.2	0.9	83.1	16.9	100.0		
Netherlands	0.0	0.0	0.0	0.0	5.6	11.1	5.6	11.1	22.2	0.0	11.1	16.7	11.1	5.6	0.0	0.0	55.6	44.4	100.0		
Oth.Europe	0.6	0.6	1.3	3.2	9.0	7.1	12.2	6.4	16.7	11.5	8.3	9.0	5.8	1.9	4.5	1.9	58.3	41.7	100.0		
France	0.0	0.0	0.0	5.3	31.6	5.3	10.5	2.6	18.4	2.6	2.6	2.6	13.2	2.6	0.0	2.6	76.3	23.7	100.0		
Italy	0.0	0.0	3.6	7.1	14.3	7.1	7.1	0.0	25.0	7.1	0.0	7.1	10.7	3.6	7.1	0.0	67.9	32.1	100.0		
China	1.2	0.0	7.7	4.9	24.0	10.6	18.3	4.1	14.6	1.2	5.3	0.8	0.8	0.0	5.3	1.2	77.2	22.8	100.0		
Oth.Country	1.8	0.9	2.8	0.0	12.8	6.4	14.7	5.5	18.3	2.8	12.8	2.8	7.3	4.6	5.5	0.9	76.1	23.9	100.0		
Total	2.1	1.8	4.7	4.0	10.9	6.5	13.0	6.0	14.5	6.7	10.1	4.9	5.5	1.9	4.5	2.9	65.3	34.7	100.0		

Chart 6: Visitor Arrivals by Age group category by Sex, 4th Quarter 2016

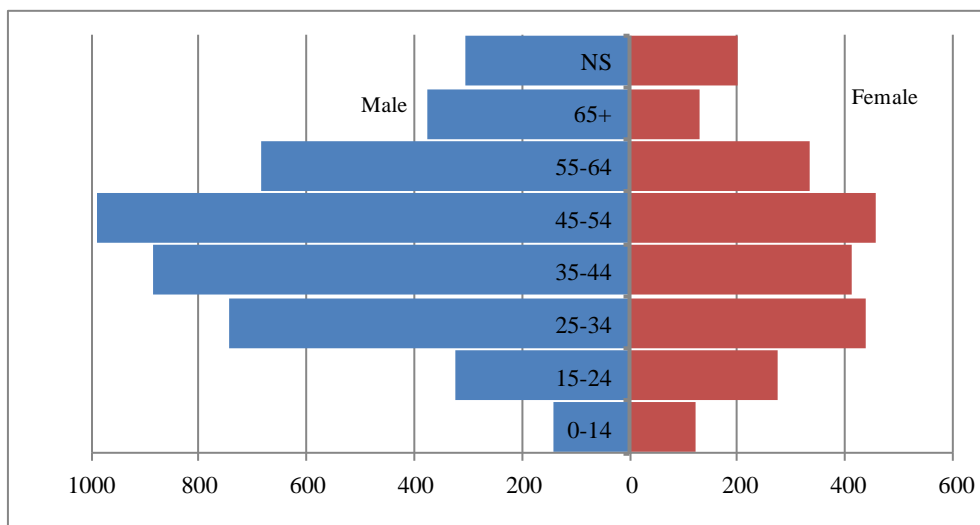


Table 7: Visitor Arrivals by Country of Residence by Occupation and Sex: 4th Quarter 2016

Country of Usual Residence	Professional and Technical		Administration and Managerial		Clerical & Related Work		Sales Worker		Service Worker		Agriculture Forestry Fishery		Production & Related Work		Other		No Work		Not Stated ²		Total		
	M	F	M	F	M	F	M	F	M	F	M	F	M	F	M	F	M	F	M	F	M	F	All
Australia	609	452	220	72	19	25	25	7	58	40	8	1	89	3	515	319	156	107	1	0	1,700	1,026	2,726
PNG	121	81	39	12	7	2	2	0	7	7	1	0	7	0	102	44	17	19	0	0	303	165	468
US	82	42	20	2	1	3	4	1	18	7	0	0	3	0	54	34	26	34	1	0	209	123	332
NZ	92	51	51	9	2	3	5	1	17	7	1	0	6	0	90	51	13	9	0	0	277	131	408
UK	19	9	11	2	3	0	0	0	1	1	0	0	1	0	14	10	8	3	0	0	57	25	82
Japan	26	8	11	2	6	0	4	0	3	1	0	0	2	0	73	24	25	4	0	0	150	39	189
Germany	11	7	3	0	0	0	0	0	0	0	0	0	0	0	14	5	3	1	0	0	31	13	44
Canada	11	4	5	2	0	2	1	0	0	2	0	0	2	0	8	7	11	7	0	0	38	24	62
Oth.Pacific	45	32	10	2	4	1	0	1	11	3	3	0	3	1	64	36	13	9	0	0	153	85	238
Vanuatu	68	81	6	3	2	4	1	4	4	73	0	1	3	4	71	69	5	15	0	0	160	254	414
Hong Kong	1	2	5	1	1	0	0	0	1	4	0	0	0	0	9	2	3	1	0	0	20	10	30
Fiji	96	54	36	14	7	1	5	1	3	7	1	2	10	0	110	71	9	13	0	0	277	163	440
Oth.Asia	93	39	80	18	9	3	82	3	3	23	15	0	107	3	222	37	41	7	0	0	652	133	785
Netherlands	4	1	1	0	0	1	0	0	0	0	0	0	0	0	3	5	2	1	0	0	10	8	18
Oth.Europe	33	26	14	5	0	1	2	0	1	2	1	0	3	0	31	23	6	8	0	0	91	65	156
France	11	1	1	0	1	0	0	0	0	1	0	0	0	0	13	5	3	2	0	0	29	9	38
Italy	10	4	1	0	0	0	0	0	0	1	0	0	0	0	8	2	0	2	0	0	19	9	28
China	45	4	40	10	4	1	12	5	3	3	4	0	9	0	51	22	21	9	1	2	190	56	246
Oth.Country	15	9	6	2	1	0	1	0	3	2	0	0	7	0	43	7	6	6	1	0	83	26	109
Total	1,392	907	560	156	67	47	144	23	133	184	34	4	252	11	1,495	773	368	257	4	2	4,449	2,364	6,813

	Percentage																						
Australia	22.3	16.6	8.1	2.6	0.7	0.9	0.9	0.3	2.1	1.5	0.3	*	3.3	0.1	18.9	11.7	5.7	3.9	*	0.0	62.4	37.6	100.0
PNG	25.9	17.3	8.3	2.6	1.5	0.4	0.4	0.0	1.5	1.5	0.2	0.0	1.5	0.0	21.8	9.4	3.6	4.1	0.0	0.0	64.7	35.3	100.0
US	24.7	12.7	6.0	0.6	0.3	0.9	1.2	0.3	5.4	2.1	0.0	0.0	0.9	0.0	16.3	10.2	7.8	10.2	0.3	0.0	63.0	37.0	100.0
NZ	22.5	12.5	12.5	2.2	0.5	0.7	1.2	0.2	4.2	1.7	0.2	0.0	1.5	0.0	22.1	12.5	3.2	2.2	0.0	0.0	67.9	32.1	100.0
UK	23.2	11.0	13.4	2.4	3.7	0.0	0.0	0.0	1.2	1.2	0.0	0.0	1.2	0.0	17.1	12.2	9.8	3.7	0.0	0.0	69.5	30.5	100.0
Japan	13.8	4.2	5.8	1.1	3.2	0.0	2.1	0.0	1.6	0.5	0.0	0.0	1.1	0.0	38.6	12.7	13.2	2.1	0.0	0.0	79.4	20.6	100.0
Germany	25.0	15.9	6.8	0.0	0.0	0.0	0.0	0.0	0.0	0.0	0.0	0.0	0.0	0.0	31.8	11.4	6.8	2.3	0.0	0.0	70.5	29.5	100.0
Canada	17.7	6.5	8.1	3.2	0.0	3.2	1.6	0.0	0.0	3.2	0.0	0.0	3.2	0.0	12.9	11.3	17.7	11.3	0.0	0.0	61.3	38.7	100.0
Oth.Pacific	18.9	13.4	4.2	0.8	1.7	0.4	0.0	0.4	4.6	1.3	1.3	0.0	1.3	0.4	26.9	15.1	5.5	3.8	0.0	0.0	64.3	35.7	100.0
Vanuatu	16.4	19.6	1.4	0.7	0.5	1.0	0.2	1.0	1.0	17.6	0.0	0.2	0.7	1.0	17.1	16.7	1.2	3.6	0.0	0.0	38.6	61.4	100.0
Hong Kong	3.3	6.7	16.7	3.3	3.3	0.0	0.0	0.0	3.3	13.3	0.0	0.0	0.0	0.0	30.0	6.7	10.0	3.3	0.0	0.0	66.7	33.3	100.0
Fiji	21.8	12.3	8.2	3.2	1.6	0.2	1.1	0.2	0.7	1.6	0.2	0.5	2.3	0.0	25.0	16.1	2.0	3.0	0.0	0.0	63.0	37.0	100.0
Oth.Asia	11.8	5.0	10.2	2.3	1.1	0.4	10.4	0.4	0.4	2.9	1.9	0.0	13.6	0.4	28.3	4.7	5.2	0.9	0.0	0.0	83.1	16.9	100.0
Netherlands	22.2	5.6	5.6	0.0	0.0	5.6	0.0	0.0	0.0	0.0	0.0	0.0	0.0	0.0	16.7	27.8	11.1	5.6	0.0	0.0	55.6	44.4	100.0
Oth.Europe	21.2	16.7	9.0	3.2	0.0	0.6	1.3	0.0	0.6	1.3	0.6	0.0	1.9	0.0	19.9	14.7	3.8	5.1	0.0	0.0	58.3	41.7	100.0
France	28.9	2.6	2.6	0.0	2.6	0.0	0.0	0.0	0.0	2.6	0.0	0.0	0.0	0.0	34.2	13.2	7.9	5.3	0.0	0.0	76.3	23.7	100.0
Italy	35.7	14.3	3.6	0.0	0.0	0.0	0.0	0.0	0.0	3.6	0.0	0.0	0.0	0.0	28.6	7.1	0.0	7.1	0.0	0.0	67.9	32.1	100.0
China	18.3	1.6	16.3	4.1	1.6	0.4	4.9	2.0	1.2	1.2	1.6	0.0	3.7	0.0	20.7	8.9	8.5	3.7	0.4	0.8	77.2	22.8	100.0
Oth.Country	13.8	8.3	5.5	1.8	0.9	0.0	0.9	0.0	2.8	1.8	0.0	0.0	6.4	0.0	39.4	6.4	5.5	5.5	0.9	0.0	76.1	23.9	100.0
Total	20.4	13.3	8.2	2.3	1.0	0.7	2.1	0.3	2.0	2.7	0.5	0.1	3.7	0.2	21.9	11.3	5.4	3.8	0.1	*	65.3	34.7	100.0

*: 0 < * < 0.05; value is between 0 and 0.05

Chart 7: Visitors Arrival by Occupation by Sex, 4th Quarter 2016

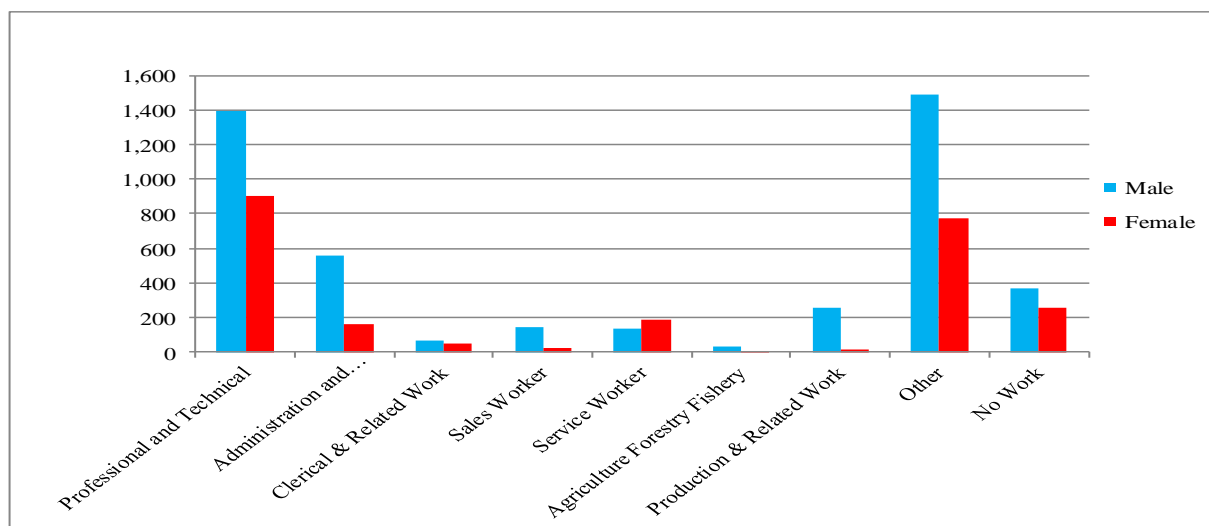
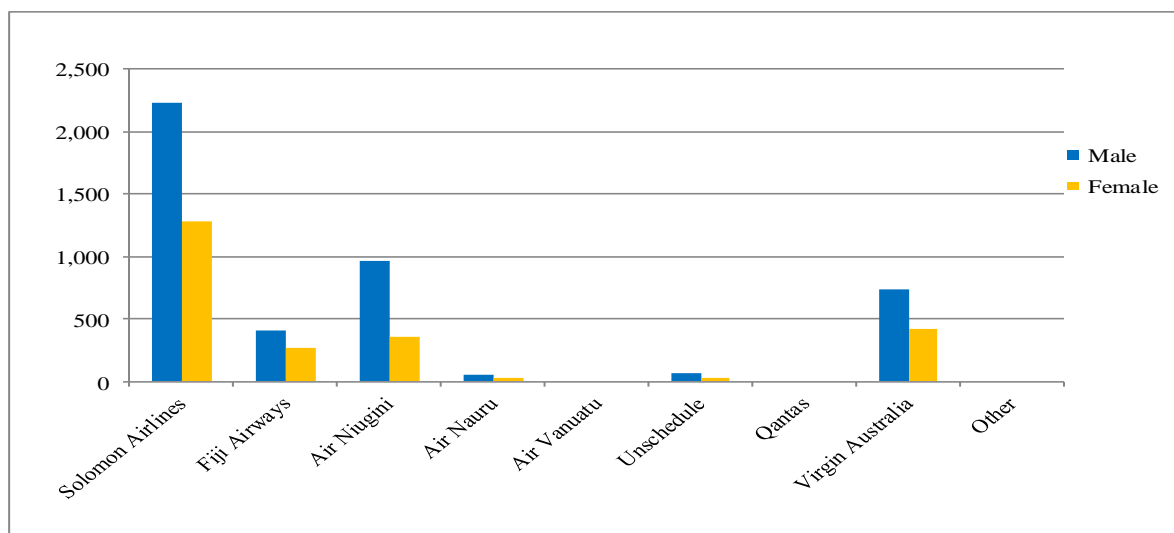


Table 8: Visitor Arrivals by Country of residence by Carrier by Sex: 4th Quarter 2016

Country of Usual Residence	Solomon Airlines		Fiji Airways		Air Niugini		Air Nauru		Air Vanuatu		Unschedule		Qantas		Virgin Australia		Total		
	M	F	M	F	M	F	M	F	M	F	M	F	M	F	M	F	M	F	All
	Australia	1160	707	21	17	47	19	5	5	0	0	23	11	0	1	444	266	1,700	1,026
PNG	14	4	12	12	272	148	1	1	0	0	0	0	0	0	4	0	303	165	468
US	94	42	49	38	27	15	7	1	0	0	15	6	0	0	17	21	209	123	332
NZ	122	59	30	13	4	0	1	0	0	0	15	1	0	0	105	58	277	131	408
UK	28	8	3	2	7	2	0	0	0	0	0	1	0	0	19	12	57	25	82
Japan	46	12	2	3	89	19	0	0	0	0	0	0	0	0	13	5	150	39	189
Germany	13	7	6	4	6	0	0	0	0	0	0	0	0	0	6	2	31	13	44
Canada	21	12	9	6	2	1	0	0	0	0	0	0	0	0	6	5	38	24	62
Oth.Pacific	72	29	42	34	14	6	23	16	0	0	0	0	0	0	2	0	153	85	238
Vanuatu	107	219	0	2	52	33	0	0	0	0	0	0	0	1	0	160	254	414	
Hong Kong	3	3	2	0	14	6	0	0	0	0	0	0	1	0	0	1	20	10	30
Fiji	71	31	162	111	41	17	1	3	0	0	0	0	0	2	1	277	163	440	
Oth.Asia	326	78	33	4	209	32	7	0	0	0	0	1	1	76	18	652	133	785	
Netherlands	7	2	0	2	2	2	0	0	0	0	0	0	0	1	2	10	8	18	
Oth.Europe	44	31	9	8	14	8	4	1	0	0	0	0	0	20	17	91	65	156	
France	21	6	3	1	5	0	0	0	0	0	0	0	0	0	2	29	9	38	
Italy	13	6	1	1	1	0	0	0	0	0	0	0	0	4	2	19	9	28	
China	25	6	26	2	129	45	0	0	0	0	6	3	0	0	4	0	190	56	246
Oth.Country	41	13	2	2	29	6	1	0	0	0	1	0	0	9	5	83	26	109	
Total	2,228	1,275	412	262	964	359	50	27	0	0	60	22	2	2	733	417	4,449	2,364	6,813
	Percentage																		
Australia	42.6	25.9	0.8	0.6	1.7	0.7	0.2	0.2	0.0	0.0	0.8	0.4	0.0	*	16.3	9.8	62.4	37.6	100.0
PNG	3.0	0.9	2.6	2.6	58.1	31.6	0.2	0.2	0.0	0.0	0.0	0.0	0.0	0.0	0.9	0.0	64.7	35.3	100.0
US	28.3	12.7	14.8	11.4	8.1	4.5	2.1	0.3	0.0	0.0	4.5	1.8	0.0	0.0	5.1	6.3	63.0	37.0	100.0
NZ	29.9	14.5	7.4	3.2	1.0	0.0	0.2	0.0	0.0	0.0	3.7	0.2	0.0	0.0	25.7	14.2	67.9	32.1	100.0
UK	34.1	9.8	3.7	2.4	8.5	2.4	0.0	0.0	0.0	0.0	0.0	1.2	0.0	0.0	23.2	14.6	69.5	30.5	100.0
Japan	24.3	6.3	1.1	1.6	47.1	10.1	0.0	0.0	0.0	0.0	0.0	0.0	0.0	6.9	2.6	79.4	20.6	100.0	
Germany	29.5	15.9	13.6	9.1	13.6	0.0	0.0	0.0	0.0	0.0	0.0	0.0	0.0	13.6	4.5	70.5	29.5	100.0	
Canada	33.9	19.4	14.5	9.7	3.2	1.6	0.0	0.0	0.0	0.0	0.0	0.0	0.0	9.7	8.1	61.3	38.7	100.0	
Oth.Pacific	30.3	12.2	17.6	14.3	5.9	2.5	9.7	6.7	0.0	0.0	0.0	0.0	0.0	0.8	0.0	64.3	35.7	100.0	
Vanuatu	25.8	52.9	0.0	0.5	12.6	8.0	0.0	0.0	0.0	0.0	0.0	0.0	0.0	0.2	0.0	38.6	61.4	100.0	
Hong Kong	10.0	10.0	6.7	0.0	46.7	20.0	0.0	0.0	0.0	0.0	0.0	0.0	3.3	0.0	0.0	3.3	66.7	33.3	100.0
Fiji	16.1	7.0	36.8	25.2	9.3	3.9	0.2	0.7	0.0	0.0	0.0	0.0	0.0	0.5	0.2	63.0	37.0	100.0	
Oth.Asia	41.5	9.9	4.2	0.5	26.6	4.1	0.9	0.0	0.0	0.0	0.0	0.1	0.1	9.7	2.3	83.1	16.9	100.0	
Netherlands	38.9	11.1	0.0	11.1	11.1	11.1	0.0	0.0	0.0	0.0	0.0	0.0	0.0	5.6	11.1	55.6	44.4	100.0	
Oth.Europe	28.2	19.9	5.8	5.1	9.0	5.1	2.6	0.6	0.0	0.0	0.0	0.0	0.0	12.8	10.9	58.3	41.7	100.0	
France	55.3	15.8	7.9	2.6	13.2	0.0	0.0	0.0	0.0	0.0	0.0	0.0	0.0	0.0	5.3	76.3	23.7	100.0	
Italy	46.4	21.4	3.6	3.6	3.6	0.0	0.0	0.0	0.0	0.0	0.0	0.0	0.0	14.3	7.1	67.9	32.1	100.0	
China	10.2	2.4	10.6	0.8	52.4	18.3	0.0	0.0	0.0	0.0	2.4	1.2	0.0	0.0	1.6	0.0	77.2	22.8	100.0
Oth.Country	37.6	11.9	1.8	1.8	26.6	5.5	0.9	0.0	0.0	0.0	0.9	0.0	0.0	8.3	4.6	76.1	23.9	100.0	
Total	32.7	18.7	6.0	3.8	14.1	5.3	0.7	0.4	0.0	0.0	0.9	0.3	*	*	10.8	6.1	65.3	34.7	100.0

Chart 8: Visitor Arrivals by Carrier by Sex, 4th Quarter 2016



Appendix 1

Concepts and Definitions

Persons entering Solomon Islands classify themselves into three (3) categories; returning resident, intending resident, and visitor. The concepts and definitions of the various categories are as follows:

(i) Returning residents

- Solomon Islanders and non-Solomon Islanders who have left the country and are returning to continue their residence.
- Non Solomon Islanders includes resident permit holders and Diplomatic officials, and their immediate family members. This may also includes legal or official arrangements that fall out side of the above.

(ii) Intending residents

- Non-Solomon Islander who wish to take up residence in Solomon Islands.

(iii) Visitors

- Any traveller who is not a Solomon Islander and who purposely spend less time – at most a period of 120 days², in the country and with the intention and purpose of visiting.
- *Tourist*
 - Visitors who further classify themselves stating their visit are purposely for '*holiday and vacation*'. This exclude, tourist arrivals by cruise ships.
 - Wife accompanying husband on business purpose is a private tourist unless also working.
 - *World Tourism Organization WTO definition of Tourism:*
*It comprises the activities of persons travelling to and staying in places outside their usual environment for not more than one consecutive year for leisure, business and other purposes not related to the exercise of an activity remunerated from within the place visited*³.

(iv) Markets

- *Country of Usual Residence*

² Solomon Islands 1993 Statistical Yearbook.

³ Dimensions of Hospitality, Study guide 1. p17

Appendix 2

Table 9: Intending Resident Arrivals by Country of Residence by Occupation and Sex: 4th Quarter 2016

Country of Usual Residence	Professional and Technical		Administration and Managerial		Clerical & Related Work		Sales Worker		Service Worker		Agriculture Forestry Fishery		Production & Related Work		Other		No Work		Not Stated		Total		
	M	F	M	F	M	F	M	F	M	F	M	F	M	F	M	F	M	F	M	F	M	F	All
Australia	2	1	0	4	0	1	0	0	0	0	0	0	0	2	1	1	0	0	0	5	7	12	
PNG	2	0	0	0	0	0	0	0	0	0	0	0	0	1	0	1	0	0	0	4	0	4	
US	0	0	0	0	0	0	0	0	0	0	0	0	0	0	0	0	0	0	0	0	0	0	
NZ	1	2	0	0	0	0	0	0	0	0	0	0	0	0	1	0	0	0	0	1	3	4	
UK	0	0	0	0	0	0	0	0	0	0	0	0	0	0	0	0	0	0	0	0	0	0	
Japan	1	0	0	0	0	0	0	0	0	0	0	0	0	0	1	0	0	0	0	1	1	2	
Germany	0	0	0	0	0	0	0	0	0	0	0	0	0	0	0	0	0	0	0	0	0	0	
Canada	0	0	0	0	0	0	0	0	0	0	0	0	0	0	0	0	0	0	0	0	0	0	
Oth.Pacific	0	0	2	0	0	0	0	0	0	0	0	0	0	0	1	0	0	0	0	2	1	3	
Vanuatu	2	0	0	0	0	0	0	0	0	0	0	0	0	0	0	0	0	0	2	0	2		
Hong Kong	0	0	0	0	0	0	0	0	0	0	0	0	0	0	0	0	0	0	0	0	0	0	
Fiji	0	0	1	0	0	0	0	0	0	0	0	0	0	0	0	0	0	0	1	0	1		
Oth.Asia	7	3	8	0	0	0	12	0	0	2	2	0	16	2	28	2	4	2	0	77	11	88	
Netherlands	0	0	0	0	0	0	0	0	0	0	0	0	0	0	0	0	0	0	0	0	0	0	
Oth.Europe	1	0	0	1	0	0	0	0	0	0	0	0	0	0	0	0	0	0	1	1	2		
France	0	0	1	0	0	0	0	0	0	0	0	0	0	1	2	0	0	0	2	2	4		
Italy	1	0	0	0	0	0	0	0	0	0	0	0	0	0	0	0	0	0	1	0	1		
China	1	3	13	4	1	0	3	1	0	1	4	1	0	9	2	7	4	0	38	16	54		
Oth.Country	1	0	0	0	0	0	1	0	1	0	0	0	0	3	0	0	0	0	6	0	6		
Not Stated	1	0	0	0	0	0	0	0	0	0	0	0	0	0	0	0	0	0	1	0	1		
Total	20	9	25	9	1	1	16	1	1	3	6	1	16	2	44	10	13	6	0	0	142	42	184
<u>Percentage</u>																							
Australia	16.7	8.3	0.0	33.3	0.0	8.3	0.0	0.0	0.0	0.0	0.0	0.0	0.0	16.7	8.3	8.3	0.0	0.0	0.0	41.7	58.3	100.0	
PNG	50.0	0.0	0.0	0.0	0.0	0.0	0.0	0.0	0.0	0.0	0.0	0.0	0.0	25.0	0.0	25.0	0.0	0.0	0.0	100.0	0.0	100.0	
US	0.0	0.0	0.0	0.0	0.0	0.0	0.0	0.0	0.0	0.0	0.0	0.0	0.0	0.0	0.0	0.0	0.0	0.0	0.0	0.0	0.0	0.0	
NZ	25.0	50.0	0.0	0.0	0.0	0.0	0.0	0.0	0.0	0.0	0.0	0.0	0.0	0.0	25.0	0.0	0.0	0.0	0.0	25.0	75.0	100.0	
UK	0.0	0.0	0.0	0.0	0.0	0.0	0.0	0.0	0.0	0.0	0.0	0.0	0.0	0.0	0.0	0.0	0.0	0.0	0.0	0.0	0.0	0.0	
Japan	50.0	0.0	0.0	0.0	0.0	0.0	0.0	0.0	0.0	0.0	0.0	0.0	0.0	0.0	50.0	0.0	0.0	0.0	0.0	50.0	50.0	100.0	
Germany	0.0	0.0	0.0	0.0	0.0	0.0	0.0	0.0	0.0	0.0	0.0	0.0	0.0	0.0	0.0	0.0	0.0	0.0	0.0	0.0	0.0	0.0	
Canada	0.0	0.0	0.0	0.0	0.0	0.0	0.0	0.0	0.0	0.0	0.0	0.0	0.0	0.0	0.0	0.0	0.0	0.0	0.0	0.0	0.0	0.0	
Oth.Pacific	0.0	0.0	66.7	0.0	0.0	0.0	0.0	0.0	0.0	0.0	0.0	0.0	0.0	0.0	33.3	0.0	0.0	0.0	0.0	66.7	33.3	100.0	
Vanuatu	100.0	0.0	0.0	0.0	0.0	0.0	0.0	0.0	0.0	0.0	0.0	0.0	0.0	0.0	0.0	0.0	0.0	0.0	0.0	100.0	0.0	100.0	
Hong Kong	0.0	0.0	0.0	0.0	0.0	0.0	0.0	0.0	0.0	0.0	0.0	0.0	0.0	0.0	0.0	0.0	0.0	0.0	0.0	0.0	0.0	0.0	
Fiji	0.0	0.0	100.0	0.0	0.0	0.0	0.0	0.0	0.0	0.0	0.0	0.0	0.0	0.0	0.0	0.0	0.0	0.0	0.0	100.0	0.0	100.0	
Oth.Asia	8.0	3.4	9.1	0.0	0.0	0.0	13.6	0.0	0.0	2.3	2.3	0.0	18.2	2.3	31.8	2.3	4.5	2.3	0.0	87.5	12.5	100.0	
Netherlands	0.0	0.0	0.0	0.0	0.0	0.0	0.0	0.0	0.0	0.0	0.0	0.0	0.0	0.0	0.0	0.0	0.0	0.0	0.0	0.0	0.0	0.0	
Oth.Europe	50.0	0.0	0.0	50.0	0.0	0.0	0.0	0.0	0.0	0.0	0.0	0.0	0.0	0.0	0.0	0.0	0.0	0.0	50.0	50.0	100.0		
France	0.0	0.0	25.0	0.0	0.0	0.0	0.0	0.0	0.0	0.0	0.0	0.0	0.0	25.0	50.0	0.0	0.0	0.0	50.0	50.0	100.0		
Italy	100.0	0.0	0.0	0.0	0.0	0.0	0.0	0.0	0.0	0.0	0.0	0.0	0.0	0.0	0.0	0.0	0.0	0.0	100.0	0.0	100.0		
China	1.9	5.6	24.1	7.4	1.9	0.0	5.6	1.9	0.0	1.9	7.4	1.9	0.0	16.7	3.7	13.0	7.4	0.0	70.4	29.6	100.0		
Oth.Country	16.7	0.0	0.0	0.0	0.0	0.0	16.7	0.0	16.7	0.0	0.0	0.0	0.0	50.0	0.0	0.0	0.0	0.0	100.0	0.0	100.0		
Not Stated	100.0	0.0	0.0	0.0	0.0	0.0	0.0	0.0	0.0	0.0	0.0	0.0	0.0	0.0	0.0	0.0	0.0	0.0	100.0	0.0	100.0		
Total	10.9	4.9	13.6	4.9	0.5	0.5	8.7	0.5	0.5	1.6	3.3	0.5	8.7	1.1	23.9	5.4	7.1	3.3	0.0	0.0	77.2	22.8	100.0

Table 10: Intending Resident Arrivals by Country of Residence by Age Groups by Sex: 4th Quarter 2016

Country of Usual Residence	Age-Group																		Total		
	0-14		15-24		25-34		35-44		45-54		55-64		65+		Not Stated		M	F	All		
	M	F	M	F	M	F	M	F	M	F	M	F	M	F	M	F	M	F	All		
Australia	0	1	1	0	0	1	1	1	1	3	0	0	0	0	2	1	5	7	12		
PNG	2	0	0	0	0	0	0	0	0	0	0	0	1	0	1	0	4	0	4		
US	0	0	0	0	0	0	0	0	0	0	0	0	0	0	0	0	0	0	0		
NZ	1	0	0	0	0	1	0	0	0	1	0	0	0	0	0	1	1	3	4		
UK	0	0	0	0	0	0	0	0	0	0	0	0	0	0	0	0	0	0	0		
Japan	0	0	0	0	0	0	0	0	0	0	1	0	0	0	0	1	1	1	2		
Germany	0	0	0	0	0	0	0	0	0	0	0	0	0	0	0	0	0	0	0		
Canada	0	0	0	0	0	0	0	0	0	0	0	0	0	0	0	0	0	0	0		
Oth.Pacific	0	0	0	0	0	0	0	0	0	0	1	0	0	0	1	1	2	1	3		
Vanuatu	0	0	0	0	0	0	0	0	2	0	0	0	0	0	0	0	2	0	2		
Hong Kong	0	0	0	0	0	0	0	0	0	0	0	0	0	0	0	0	0	0	0		
Fiji	0	0	0	0	0	0	1	0	0	0	0	0	0	0	0	0	1	0	1		
Oth.Asia	1	1	2	0	21	2	26	5	8	2	11	1	1	0	7	0	77	11	88		
Netherlands	0	0	0	0	0	0	0	0	0	0	0	0	0	0	0	0	0	0	0		
Oth.Europe	0	0	0	0	0	0	0	0	0	0	0	1	1	0	0	0	1	1	2		
France	0	0	0	0	2	0	0	1	0	0	0	0	0	0	0	1	2	2	4		
Italy	0	0	0	0	0	0	1	0	0	0	0	0	0	0	0	0	1	0	1		
China	0	1	4	4	10	6	12	1	6	1	2	2	2	0	2	1	38	16	54		
Oth.Country	0	0	1	0	1	0	1	0	3	0	0	0	0	0	0	0	6	0	6		
Not stated	0	0	0	0	0	0	0	0	1	0	0	0	0	0	0	0	1	0	1		
Total	4	3	8	4	34	10	42	8	21	7	15	4	5	0	13	6	142	42	184		
	Percentage																				
Australia	0.0	8.3	8.3	0.0	0.0	8.3	8.3	8.3	8.3	25.0	0.0	0.0	0.0	0.0	16.7	8.3	41.7	58.3	100.0		
PNG	50.0	0.0	0.0	0.0	0.0	0.0	0.0	0.0	0.0	0.0	0.0	0.0	25.0	0.0	25.0	0.0	100.0	0.0	100.0		
US	0.0	0.0	0.0	0.0	0.0	0.0	0.0	0.0	0.0	0.0	0.0	0.0	0.0	0.0	0.0	0.0	0.0	0.0	0.0		
NZ	25.0	0.0	0.0	0.0	0.0	25.0	0.0	0.0	0.0	25.0	0.0	0.0	0.0	0.0	0.0	25.0	25.0	75.0	100.0		
UK	0.0	0.0	0.0	0.0	0.0	0.0	0.0	0.0	0.0	0.0	0.0	0.0	0.0	0.0	0.0	0.0	0.0	0.0	0.0		
Japan	0.0	0.0	0.0	0.0	0.0	0.0	0.0	0.0	0.0	0.0	50.0	0.0	0.0	0.0	0.0	50.0	50.0	50.0	100.0		
Germany	0.0	0.0	0.0	0.0	0.0	0.0	0.0	0.0	0.0	0.0	0.0	0.0	0.0	0.0	0.0	0.0	0.0	0.0	0.0		
Canada	0.0	0.0	0.0	0.0	0.0	0.0	0.0	0.0	0.0	0.0	0.0	0.0	0.0	0.0	0.0	0.0	0.0	0.0	0.0		
Oth.Pacific	0.0	0.0	0.0	0.0	0.0	0.0	0.0	0.0	0.0	0.0	33.3	0.0	0.0	0.0	33.3	33.3	66.7	33.3	100.0		
Vanuatu	0.0	0.0	0.0	0.0	0.0	0.0	0.0	0.0	100.0	0.0	0.0	0.0	0.0	0.0	0.0	0.0	100.0	0.0	100.0		
Hong Kong	0.0	0.0	0.0	0.0	0.0	0.0	0.0	0.0	0.0	0.0	0.0	0.0	0.0	0.0	0.0	0.0	0.0	0.0	0.0		
Fiji	0.0	0.0	0.0	0.0	0.0	0.0	100.0	0.0	0.0	0.0	0.0	0.0	0.0	0.0	0.0	0.0	100.0	0.0	100.0		
Oth.Asia	1.1	1.1	2.3	0.0	23.9	2.3	29.5	5.7	9.1	2.3	12.5	1.1	1.1	0.0	8.0	0.0	87.5	12.5	100.0		
Netherlands	0.0	0.0	0.0	0.0	0.0	0.0	0.0	0.0	0.0	0.0	0.0	0.0	0.0	0.0	0.0	0.0	0.0	0.0	0.0		
Oth.Europe	0.0	0.0	0.0	0.0	0.0	0.0	0.0	0.0	0.0	0.0	0.0	50.0	50.0	0.0	0.0	0.0	50.0	50.0	100.0		
France	0.0	0.0	0.0	0.0	50.0	0.0	0.0	25.0	0.0	0.0	0.0	0.0	0.0	0.0	0.0	25.0	50.0	50.0	100.0		
Italy	0.0	0.0	0.0	0.0	0.0	0.0	100.0	0.0	0.0	0.0	0.0	0.0	0.0	0.0	0.0	0.0	100.0	0.0	100.0		
China	0.0	1.9	7.4	7.4	18.5	11.1	22.2	1.9	11.1	1.9	3.7	3.7	3.7	0.0	3.7	1.9	70.4	29.6	100.0		
Oth.Country	0.0	0.0	16.7	0.0	16.7	0.0	16.7	0.0	50.0	0.0	0.0	0.0	0.0	0.0	0.0	0.0	100.0	0.0	100.0		
Not Stated	0.0	0.0	0.0	0.0	0.0	0.0	0.0	0.0	100.0	0.0	0.0	0.0	0.0	0.0	0.0	0.0	100.0	0.0	100.0		
Total	2.2	1.6	4.3	2.2	18.5	5.4	22.8	4.3	11.4	3.8	8.2	2.2	2.7	0.0	7.1	3.3	77.2	22.8	100.0		

Table 11: Returning Resident Arrivals by Country of Residence by Age Groups by Sex: 4th Quarter 2016

Country of Usual Residence	Age-Group																								
	0-14		15-24		25-34		35-44		45-54		55-64		65+		Not Stated		Total								
	M	F	M	F	M	F	M	F	M	F	M	F	M	F	M	F	M	F	All						
Australia	0	0	0	0	2	0	0	0	2	0	0	0	0	0	1	0	5	0	5						
PNG	0	0	0	0	0	0	0	1	1	0	0	0	0	0	0	0	1	1	2						
US	0	0	0	0	0	0	0	0	0	0	0	0	0	0	0	0	0	0	0						
NZ	0	0	0	0	0	0	0	0	2	0	0	0	0	0	0	0	2	0	2						
UK	0	0	0	0	1	0	0	0	0	0	0	0	0	0	0	0	1	0	1						
Japan	0	0	0	0	0	1	1	1	0	0	0	0	0	0	0	0	1	2	3						
Germany	0	0	0	0	0	0	0	0	0	0	0	0	0	0	0	0	0	0	0						
Canada	0	0	0	0	0	0	0	0	0	0	0	0	0	0	0	0	0	0	0						
Oth.Pacific	0	0	0	0	0	0	0	0	0	0	0	0	0	0	0	0	0	0	0						
Vanuatu	0	0	0	0	0	0	0	0	0	0	0	0	0	0	0	0	0	0	0						
Hong Kong	0	0	0	0	0	0	0	0	0	0	0	0	0	0	0	0	0	0	0						
Fiji	0	0	0	0	0	0	0	0	0	0	0	0	0	0	0	0	0	0	0						
Oth.Asia	0	0	1	0	0	0	2	0	2	0	1	0	0	0	0	0	6	0	6						
Netherlands	0	0	0	0	0	0	0	0	0	0	0	0	0	0	0	0	0	0	0						
Oth.Europe	0	0	0	0	0	0	1	0	1	0	0	0	0	0	0	0	2	0	2						
France	0	0	0	0	0	0	0	0	0	0	0	0	0	0	0	0	0	0	0						
Italy	0	0	0	0	0	0	0	0	0	0	0	0	0	0	0	0	0	0	0						
China	0	0	0	0	0	1	0	0	0	0	0	0	0	0	0	0	0	1	1						
Oth.Country	0	0	0	0	0	0	0	0	0	0	1	0	0	0	0	0	1	0	1						
Solomon Is.	210	177	767	621	1147	632	905	565	740	435	352	158	121	42	443	303	4,685	2,933	7,618						
Total	210	177	768	621	1150	634	909	567	748	435	354	158	121	42	444	303	4,704	2,937	7,641						
									Percentage																
Australia	0	0	0	0	40	0	0	0	40	0	0	0	0	0	20	0	100	0	100						
PNG	0	0	0	0	0	0	0	50	50	-	0	0	0	0	0	0	50	50	100						
US	0	0	0	0	0	0	0	0	0	0	0	0	0	0	0	0	0	0	0						
NZ	0	0	0	0	0	0	0	0	100	0	0	0	0	0	0	0	100	0	100						
UK	0	0	0	0	100	0	0	0	0	0	0	0	0	0	0	0	100	0	100						
Japan	0	0	0	0	0	33.3	33.3	33.3	0	0	0	0	0	0	0	0	33	67	100						
Germany	0	0	0	0	0	0	0	0	0	0	0	0	0	0	0	0	0	0	0						
Canada	0	0	0	0	0	0	0	0	0	0	0	0	0	0	0	0	0	0	0						
Oth.Pacific	0	0	0	0	0	0	0	0	0	0	0	0	0	0	0	0	0	0	0						
Vanuatu	0	0	0	0	0	0	0	0	0	0	0	0	0	0	0	0	0	0	0						
Hong Kong	0	0	0	0	0	0	0	0	0	0	0	0	0	0	0	0	0	0	0						
Fiji	0	0	0	0	0	0	0	0	0	0	0	-	0	0	0	0	0	0	0						
Oth.Asia	0	0	16.7	0	0	0	33.3	0	33.3	0	16.7	0	0	0	0	0	100	0	100						
Netherlands	0	0	0	0	0	0	0	0	0	0	0	0	0	0	0	0	0	0	0						
Oth.Europe	0	0	0	0	0	0	50	0	50	0	0	0	0	0	0	0	100	0	100						
France	0	0	0	0	0	0	0	0	0	0	0	0	0	0	0	0	0	0	0						
Italy	0	0	0	0	0	0	0	0	0	0	0	0	0	0	0	0	0	0	0						
China	0	0	0	0	0	100	0	0	0	0	0	0	0	0	0	0	0	100	100						
Oth.Country	0	0	0	0	0	0	0	0	0	0	100	0	0	0	0	0	100	0	100						
Solomon Is.	2.80	2.30	10.10	8.20	15.10	8.30	11.90	7.40	9.70	5.70	4.60	2.10	1.60	0.60	5.80	4.00	61.50	38.50	100						
Total	2.7	2.3	10.1	8.1	15.1	8.3	11.9	7.4	9.8	5.7	4.6	2.1	1.6	0.5	5.8	4	61.6	38.4	100						

Table 12: Returning Resident Arrivals by Country of Residence by Occupation and Sex: 4th Quarter 2016

Country of Usual Residence	Professional and Technical		Administration and Managerial		Clerical & Related Work		Sales Worker		Service Worker		Agriculture Forestry Fishery		Production & Related Work		Other		No Work		Not Stated		Total				
	M	F	M	F	M	F	M	F	M	F	M	F	M	F	M	F	M	F	M	F	M	F	All		
	Australia	2	0	1	0	1	0	0	0	1	0	0	0	0	0	0	0	0	0	0	0	0	0	5	0
PNG	0	0	1	0	0	0	0	0	0	1	0	0	0	0	0	0	0	0	0	0	0	0	1	1	2
US	0	0	0	0	0	0	0	0	0	0	0	0	0	0	0	0	0	0	0	0	0	0	0	0	0
NZ	1	0	1	0	0	0	0	0	0	0	0	0	0	0	0	0	0	0	0	0	0	0	2	0	2
UK	1	0	0	0	0	0	0	0	0	0	0	0	0	0	0	0	0	0	0	0	0	0	1	0	1
Japan	0	1	0	0	0	0	0	0	0	0	0	0	0	0	1	1	0	0	0	0	0	0	1	2	3
Germany	0	0	0	0	0	0	0	0	0	0	0	0	0	0	0	0	0	0	0	0	0	0	0	0	0
Canada	0	0	0	0	0	0	0	0	0	0	0	0	0	0	0	0	0	0	0	0	0	0	0	0	0
Oth.Pacific	0	0	0	0	0	0	0	0	0	0	0	0	0	0	0	0	0	0	0	0	0	0	0	0	0
Vanuatu	0	0	0	0	0	0	0	0	0	0	0	0	0	0	0	0	0	0	0	0	0	0	0	0	0
Hong Kong	0	0	0	0	0	0	0	0	0	0	0	0	0	0	0	0	0	0	0	0	0	0	0	0	0
Fiji	0	0	0	0	0	0	0	0	0	0	0	0	0	0	0	0	0	0	0	0	0	0	0	0	0
Oth.Asia	2	0	3	0	0	0	1	0	0	0	0	0	0	0	0	0	0	0	0	0	0	0	6	0	6
Netherlands	0	0	0	0	0	0	0	0	0	0	0	0	0	0	0	0	0	0	0	0	0	0	0	0	0
Oth.Europe	0	0	1	0	0	0	0	0	0	0	0	0	1	0	0	0	0	0	0	0	0	0	2	0	2
France	0	0	0	0	0	0	0	0	0	0	0	0	0	0	0	0	0	0	0	0	0	0	0	0	0
Italy	0	0	0	0	0	0	0	0	0	0	0	0	0	0	0	0	0	0	0	0	0	0	0	0	0
China	0	0	0	0	0	0	0	1	0	0	0	0	0	0	0	0	0	0	0	0	0	0	0	1	1
Oth.Country	0	0	0	0	0	0	0	0	0	0	0	0	0	0	1	0	0	0	0	0	0	0	1	0	1
Solomon Is.	2,285	1,377	477	188	61	42	57	18	104	361	84	19	133	6	1,237	682	243	236	4	4	4,685	2,933	7,618		
Total	2,291	1,378	484	188	62	42	58	19	105	362	84	19	134	6	1,239	683	243	236	4	4	4,704	2,937	7,641		

Australia	40	0	20	0	20	0	0	0	20	0	0	0	0	0	0	0	0	0	0	0	0	100	0	100
PNG	0	0	50	0	0	0	0	0	0	50	0	0	0	0	0	0	0	0	0	0	0	50	50	100
US	0	0	0	0	0	0	0	0	0	0	0	0	0	0	0	0	0	0	0	0	0	0	0	0
NZ	50	0	50	0	0	0	0	0	0	0	0	0	0	0	0	0	0	0	0	0	0	100	0	100
UK	100	0	0	0	0	0	0	0	0	0	0	0	0	0	0	0	0	0	0	0	0	100	0	100
Japan	0	33.3	0	0	0	0	0	0	0	0	0	0	0	33.3	33.3	0	0	0	0	0	0	33.3	66.7	100
Germany	0	0	0	0	0	0	0	0	0	0	0	0	0	0	0	0	0	0	0	0	0	0	0	0
Canada	0	0	0	0	0	0	0	0	0	0	0	0	0	0	0	0	0	0	0	0	0	0	0	0
Oth.Pacific	0	0	0	0	0	0	0	0	0	0	0	0	0	0	0	0	0	0	0	0	0	0	0	0
Vanuatu	0	0	0	0	0	0	0	0	0	0	0	0	0	0	0	0	0	0	0	0	0	0	0	0
Hong Kong	0	0	0	0	0	0	0	0	0	0	0	0	0	0	0	0	0	0	0	0	0	0	0	0
Fiji	0	0	0	0	0	0	0	0	0	0	0	0	0	0	0	0	0	0	0	0	0	0	0	0
Oth.Asia	33.3	0	50	0	0	0	16.7	0	0	0	0	0	0	0	0	0	0	0	0	0	0	100	0	100
Netherlands	0	0	0	0	0	0	0	0	0	0	0	0	0	0	0	0	0	0	0	0	0	0	0	0
Oth.Europe	0	0	50	0	0	0	0	0	0	0	0	0	50	0	0	0	0	0	0	0	0	100	0	100
France	0	0	0	0	0	0	0	0	0	0	0	0	0	0	0	0	0	0	0	0	0	0	0	0
Italy	0	0	0	0	0	0	0	0	0	0	0	0	0	0	0	0	0	0	0	0	0	0	0	0
China	0	0	0	0	0	0	0	100	0	0	0	0	0	0	0	0	0	0	0	0	0	0	100	100
Oth.Country	0	0	0	0	0	0	0	0	0	0	0	0	0	0	100	0	0	0	0	0	0	100	0	100
Solomon Is.	30	18.1	6.3	2.5	0.8	0.6	0.7	0.2	1.4	4.7	1.1	0.2	1.7	0.1	16.2	9	3.2	3.1	0.1	0.1	61.5	38.5	100	
Total	30	18	6.3	2.5	0.8	0.5	0.8	0.2	1.4	4.7	1.1	0.2	1.8	0.1	16.2	8.9	3.2	3.1	0.1	0.1	61.6	38.4	100	