

Jun 21st, 2:00 PM - 2:15 PM

# Innovations I: When Enough is Enough: How the Effectiveness of Fish Passage Can Influence the Recovery of a Fish Population

Rob McLaughlin  
*University of Guelph*

Eric Smyth  
*University of Guelph*

Marten Koops  
*Fisheries and Oceans Canada Burlington*

Tom Pratt  
*Fisheries and Oceans Canada Sault Ste. Marie*

Antonio Velez-Espino  
*Fisheries and Oceans Canada Nanaimo*

Follow this and additional works at: [https://scholarworks.umass.edu/fishpassage\\_conference](https://scholarworks.umass.edu/fishpassage_conference)

---

McLaughlin, Rob; Smyth, Eric; Koops, Marten; Pratt, Tom; and Velez-Espino, Antonio, "Innovations I: When Enough is Enough: How the Effectiveness of Fish Passage Can Influence the Recovery of a Fish Population" (2016). *International Conference on Engineering and Ecohydrology for Fish Passage*. 27.  
[https://scholarworks.umass.edu/fishpassage\\_conference/2016/June21/27](https://scholarworks.umass.edu/fishpassage_conference/2016/June21/27)

This Event is brought to you for free and open access by the Fish Passage Community at UMass Amherst at ScholarWorks@UMass Amherst. It has been accepted for inclusion in International Conference on Engineering and Ecohydrology for Fish Passage by an authorized administrator of ScholarWorks@UMass Amherst. For more information, please contact [scholarworks@library.umass.edu](mailto:scholarworks@library.umass.edu).

# When Enough is Enough: How the Effectiveness of Fish Passage Can Influence the Recovery of a Fish Population

---

Rob McLaughlin, University of Guelph

Eric Smyth, University of Guelph

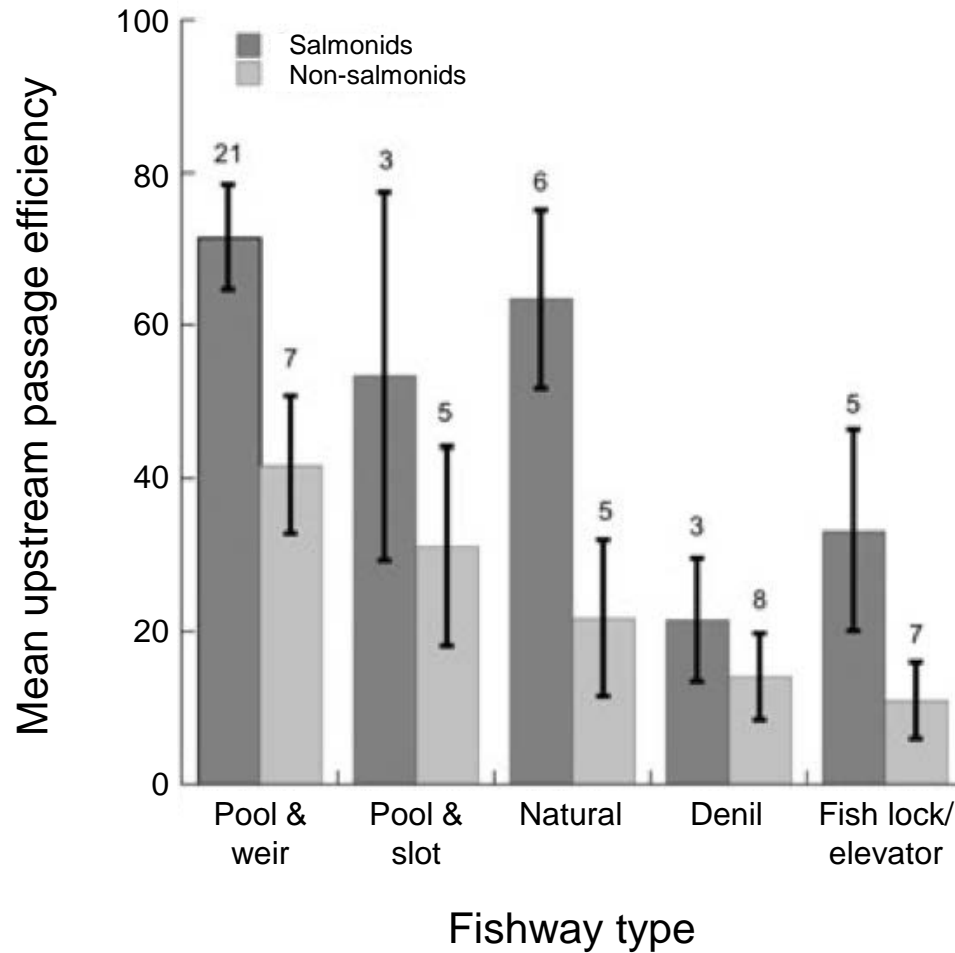
Marten Koops, Fisheries and Oceans Canada Burlington

Tom Pratt, Fisheries and Oceans Canada Sault Ste. Marie

Antonio Velez-Espino, Fisheries and Oceans, Nanaimo

# How Effective Are We?

---



# Question

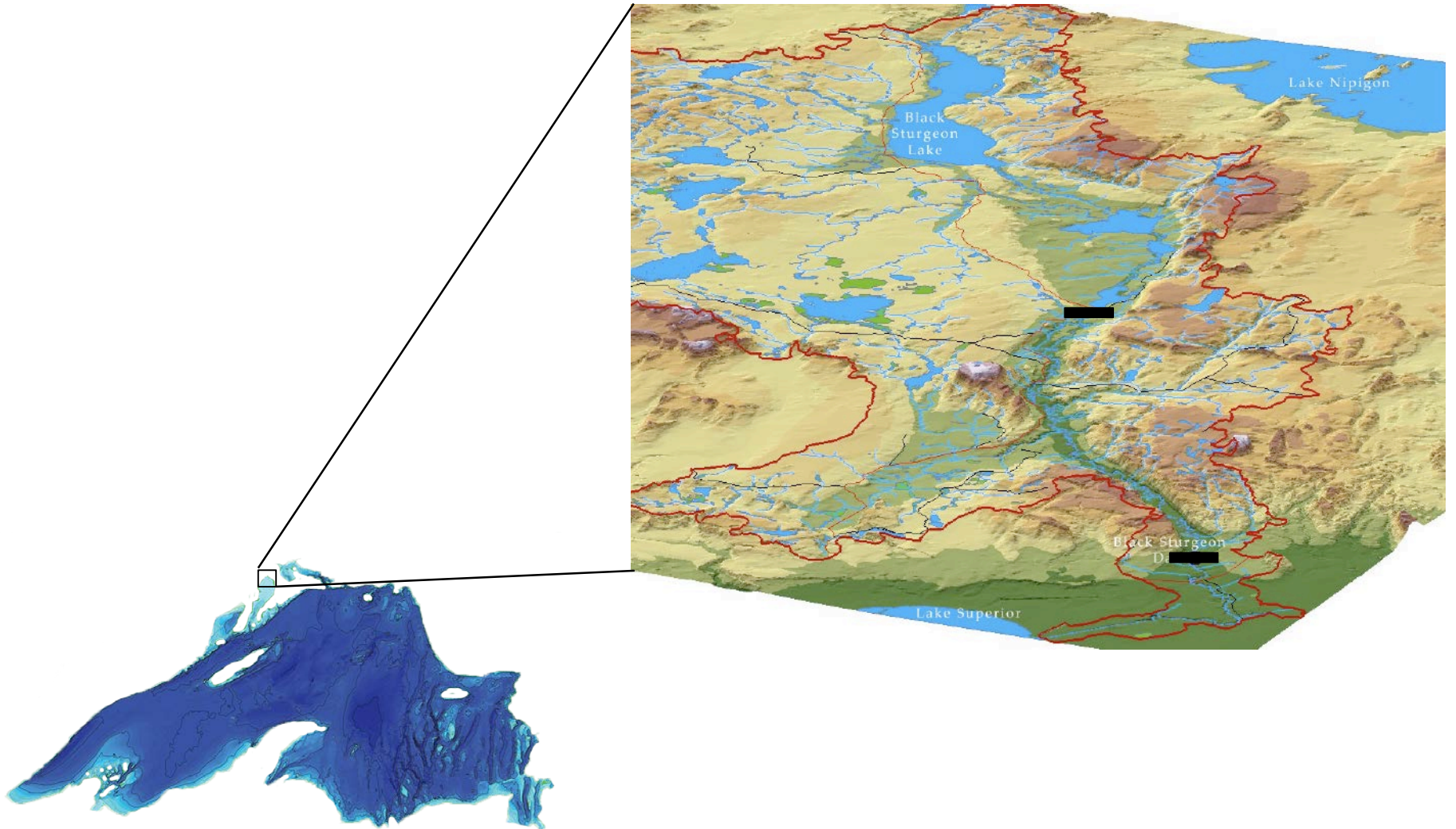
---

How does the efficiency of fish passage affect the recovery of a fish population?

- Upstream passage (adults)
- Downstream survival (juveniles)
- Combined

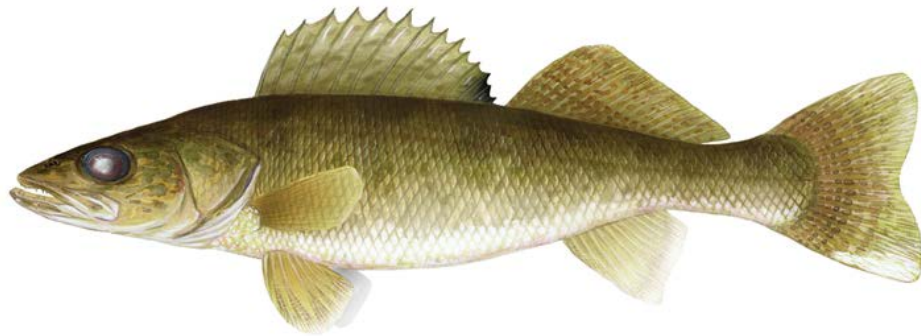
# Context

---



# Study Species

---



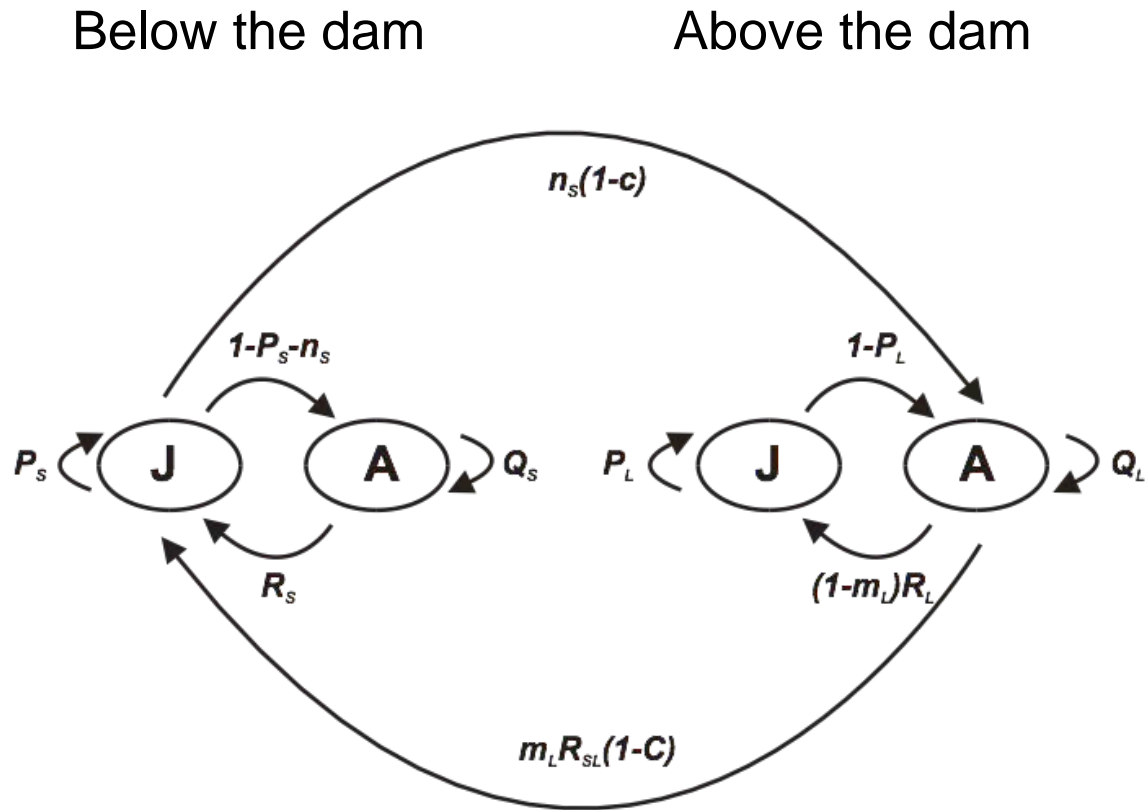
walleye



sea lamprey

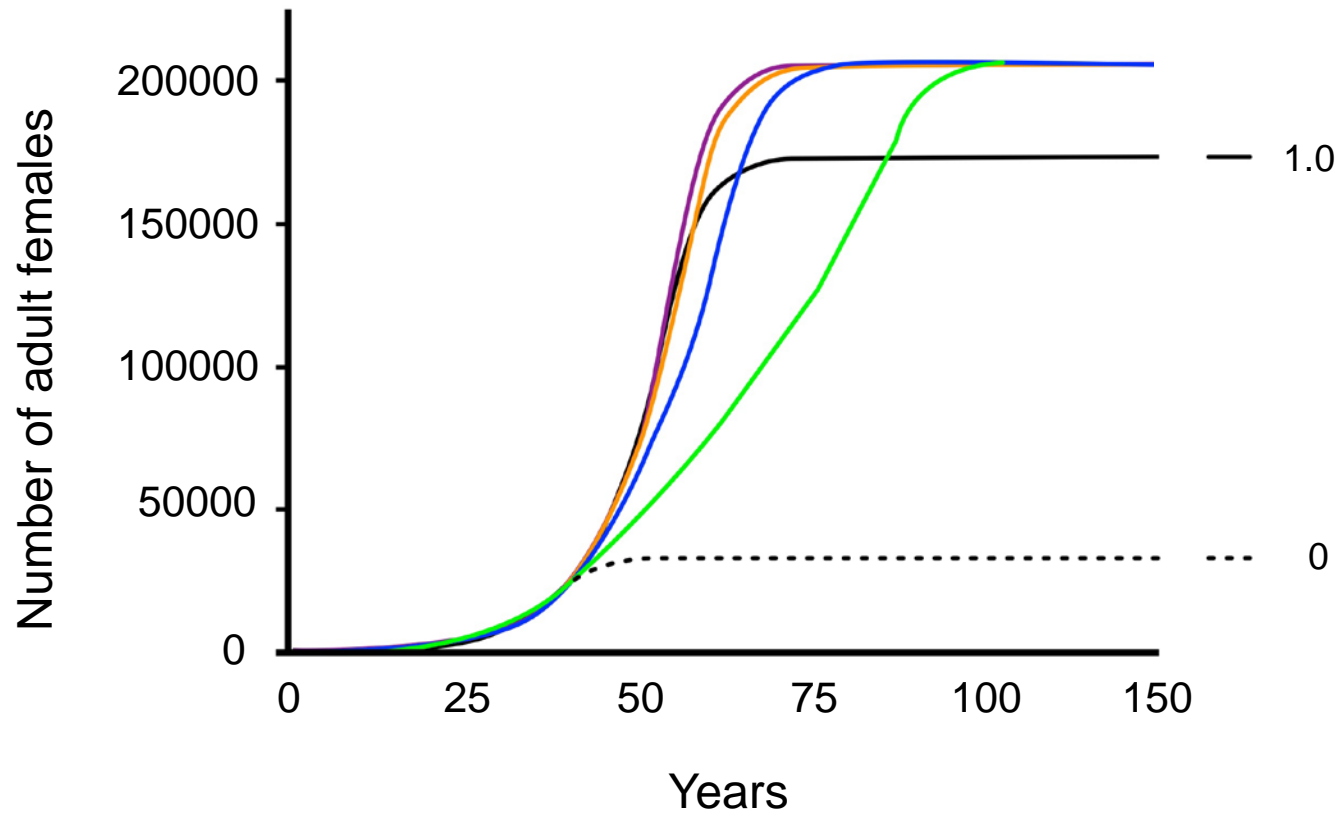
# Study Method

---



# Upstream Passage Efficiency

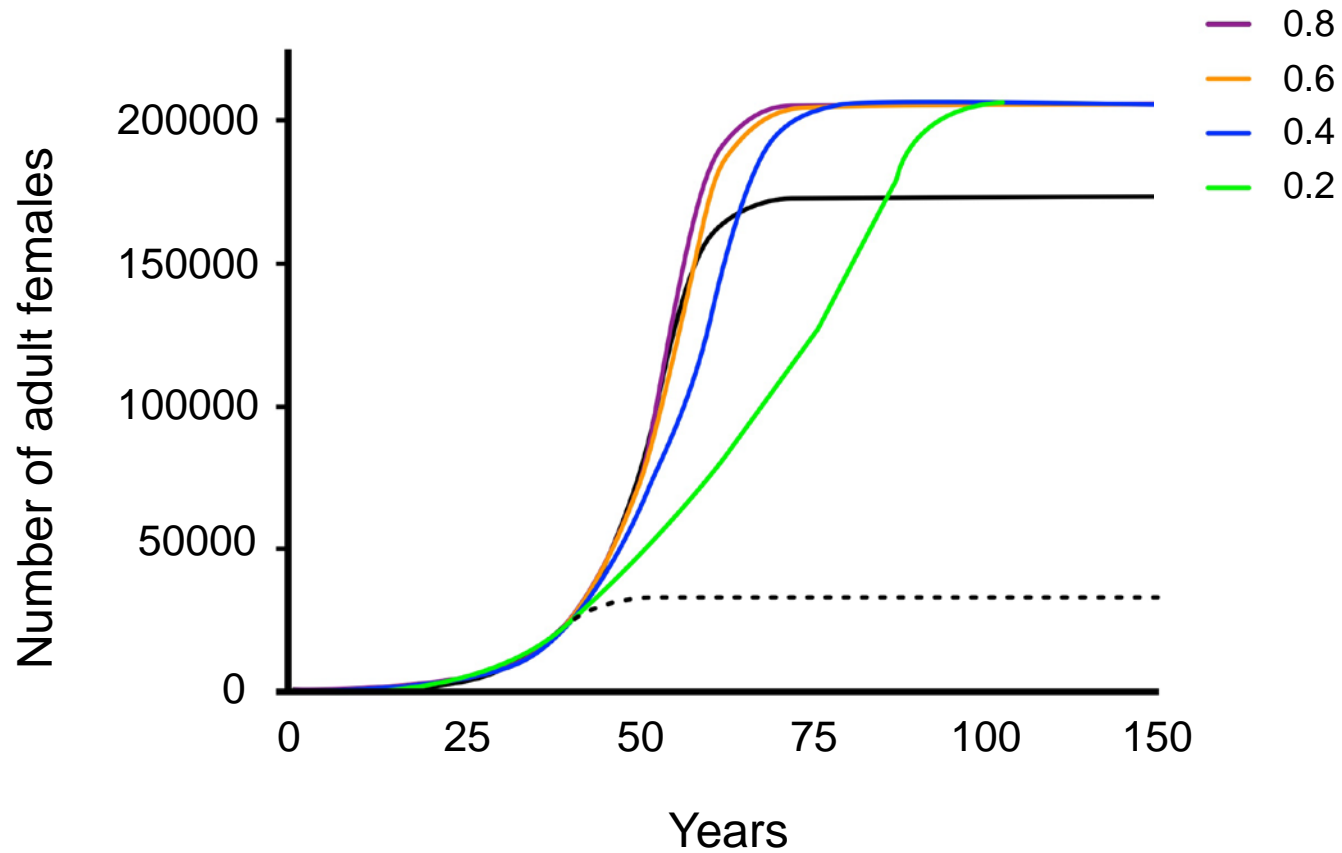
---





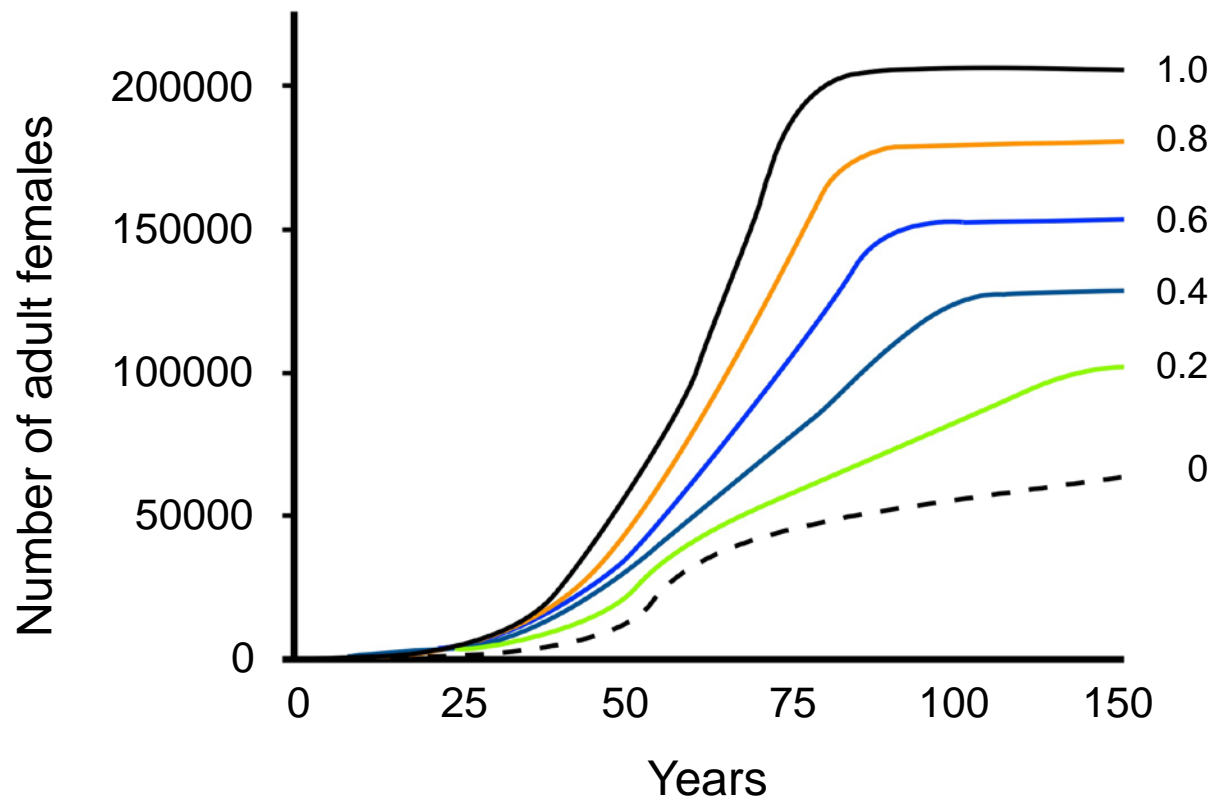
# Upstream Passage Efficiency

---

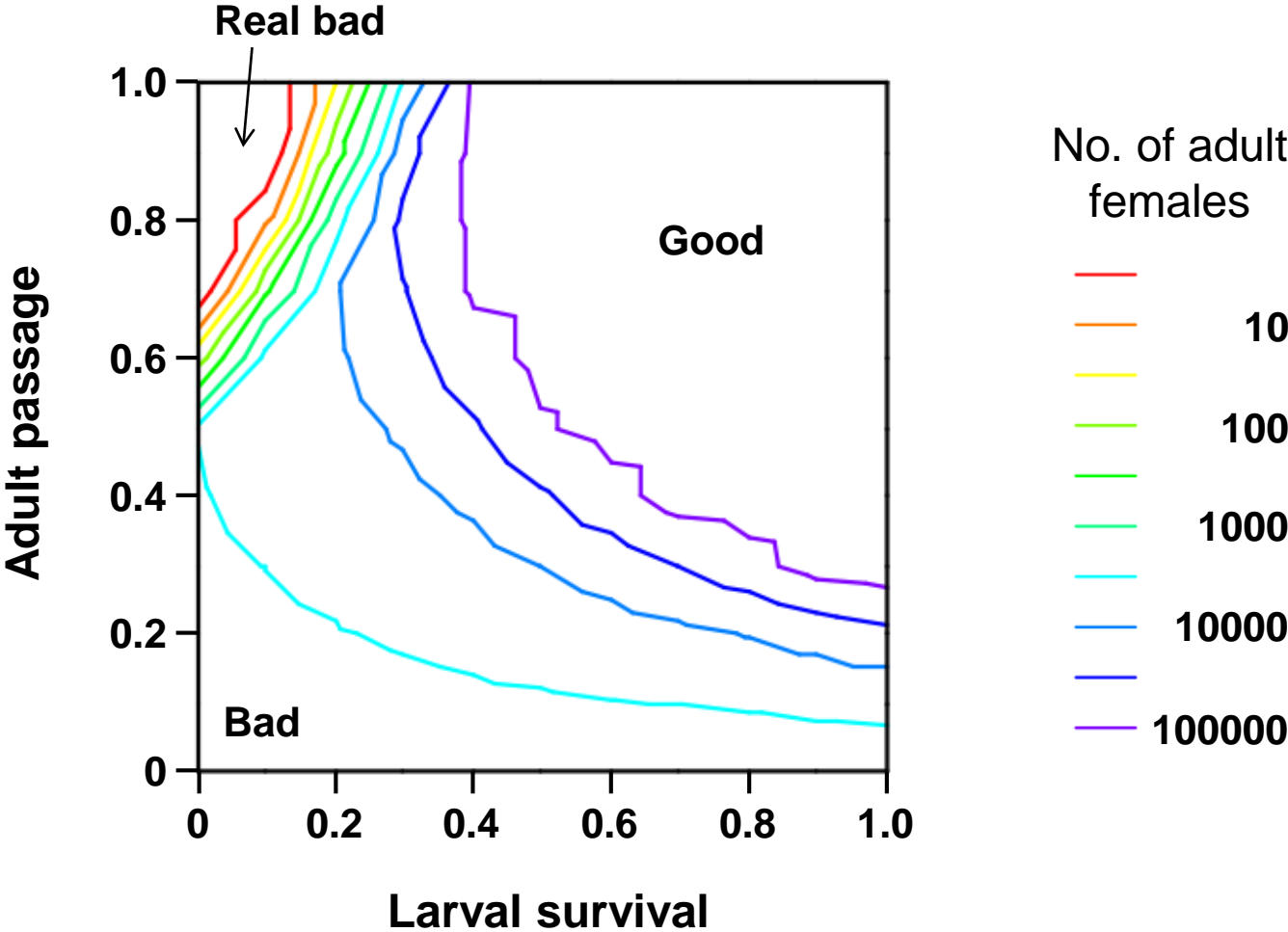


# Downstream Passage Survival

---



# Upstream + Downstream Passage



# Conclusions

---

We should be careful with our expectations for passage efficiency

- Recovery can occur even if passage is only partially successful
- There could be circumstances where highly efficient passage is undesirable



# Trap + Sort Fish Passage

