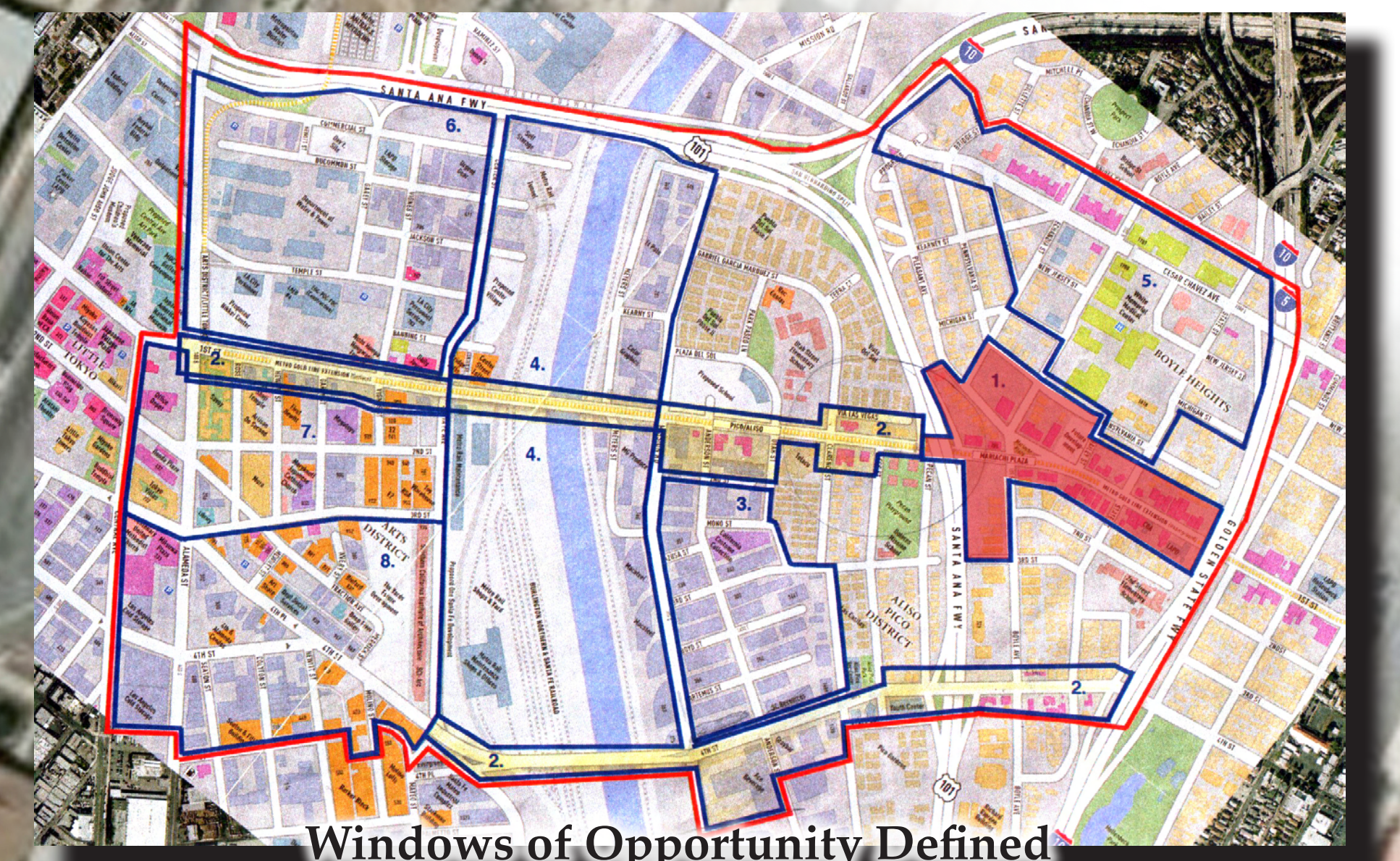


Los Vecinos



A Map Showing Site Boundaries in East L.A.



Windows of Opportunity Defined

Founded as a suburb of Los Angeles in the 1800's, Boyle Heights is constantly evolving as a place and an experience. New eras have brought new waves of immigrant residents who have left their imprints on the land. Rich in history, this area has seen recent social and economic challenges, which have led to community decline. The rich cultural fabric and the larger metropolitan context provide the perfect opportunity for a holistic approach to urban renewal.

