

1972

## Chrysomelidae of Arkansas


E. Phil Rouse

*University of Arkansas, Fayetteville*

L. N. Medvedev

*University of Arkansas, Fayetteville*

Follow this and additional works at: <http://scholarworks.uark.edu/jaas>

 Part of the [Entomology Commons](#), and the [Terrestrial and Aquatic Ecology Commons](#)

---

### Recommended Citation

Rouse, E. Phil and Medvedev, L. N. (1972) "Chrysomelidae of Arkansas," *Journal of the Arkansas Academy of Science*: Vol. 26 , Article 20.

Available at: <http://scholarworks.uark.edu/jaas/vol26/iss1/20>

This article is available for use under the Creative Commons license: Attribution-NoDerivatives 4.0 International (CC BY-ND 4.0). Users are able to read, download, copy, print, distribute, search, link to the full texts of these articles, or use them for any other lawful purpose, without asking prior permission from the publisher or the author.

This Article is brought to you for free and open access by ScholarWorks@UARK. It has been accepted for inclusion in Journal of the Arkansas Academy of Science by an authorized editor of ScholarWorks@UARK. For more information, please contact [scholar@uark.edu](mailto:scholar@uark.edu), [ccmiddle@uark.edu](mailto:ccmiddle@uark.edu).

# Chrysomelidae of Arkansas

E. PHIL ROUSE and L. N. MEDVEDEV

Department of Entomology, University of Arkansas, Fayetteville, Arkansas 72701

## ABSTRACT

A list of Chrysomelidae of Arkansas is brought up to date by inclusion of species in the reference collection in the University of Arkansas, the collection in the Zoological Institute of Leningrad, and the private collection of L. Medvedev, as well as those reported in the literature.

The list consists of 232 species, subspecies, and varieties and the ecological data where known. One new species and one new variety are included.

Current catalogues of Coleoptera list only a few Chrysomelidae from Arkansas. The specimens in the reference collections of the University of Arkansas and the Zoological Institute of Leningrad, along with those reported in the literature and those in the private collection of L. Medvedev, provide the basis for the list of species given.

The list consists of 232 species, subspecies, and varieties. Subsequent collections might increase this number to more than 300. One new species and one new variety are included.

Where known, locality by county and ecological data are given. Numbers in parentheses designate the literature sources from which the data were compiled.

## Family Chrysomelidae

### Subfamily Donaciinae

*Donacia cincticornis* Newm. Washington Co. (5) Beetles and larvae feed on leaves and roots of *Nymphaea*, *Brasenia*, *Nuphar*, *Nymphoides*, and *Potamogeton*. (1)  
*Donacia hypoleuca* Lac. Hempstead Co., Pulaski Co., Drew Co., Desha Co., Crawford Co., Mississippi Co., Arkansas Co.

### Subfamily Orsodacninae

*Orsodacne atra* (Ahrens). Johnson Co., Wahsington Co.; on peach.

### Subfamily Megascelinae

*Megascelis texana* Linell. Washington Co.; on Compositae. The only specimen seems to be transitional between *A. texana* Linell and *A. suturalis* Lac. About 4.7 mm, with sutural flavous stripe dark violaceous as in *A. suturalis* Lac.

Dr. Medvedev is Entomologist of the Soviet-Mongolian Biological Expedition. He has made or confirmed all identifications and descriptions.

Mr. Rouse, Certified Entomology Taxonomist, collected all the insects and their ecology and distribution records. He also edited and presented the paper for publication.

Published with the approval of the Director, Agricultural Experiment Station, University of Arkansas.

### Subfamily Criocerinae

*Crioceris asparagi* (L.). Washington Co., Mississippi Co.  
*Lema collaris* Say. Arkansas Co., Washington Co.  
*Lema conjuncta* Lac. Johnson Co.  
*Lema maculicollis* Lac., ab. inornata nov. Logan Co., Montgomery Co.  
*Lema sayi* Crotch. Lincoln Co.  
*Lema sexpunctata* Oliv. Benton Co., Van Buren Co., Howard Co., Jefferson Co.; at light.

### Subfamily Clytrinae

#### Tribe Clytrini

*Anomoea hoguei* Jac. Washington Co., Carroll Co., Crawford Co., Logan Co.; numerous on willow; sometimes on soybeans.

*Anomoea laticlavata* (Forst). Washington Co., Crawford Co., Johnson Co., Arkansas Co., Lawrence Co., Garland Co., Hempstead Co., Nevada Co., Desha Co.; a few specimens were collected at black light trap.

*Gynandrophthalma militaris* Lec. Washington Co.

#### Tribe Megalostomini

*Coscinoptera aeneipennis* Lec. Clark Co., Dallas Co.; on Compositae.  
*Coscinoptera axillaris* Lec. Washington Co., Crawford Co., Montgomery Co.  
*Coscinoptera dominicana* (F.). Washington Co., Franklin Co.  
*Coscinoptera dominicana franciscana* Lec. Benton Co., Washington Co.

#### Tribe Babiini

*Babia quadriguttata* (Oliv.) Washington Co., Franklin Co., Johnson Co., Logan Co., Hempstead Co., Clark Co.  
*Saxinis omogera* Lac. Washington Co., Crawford Co., Sebastian Co., Johnson Co.

### Subfamily Cryptocephalinae

#### Tribe Monachulini

*Lexiphanes saponatus* (F.). Crawford Co.; on soybeans.

## Tribe Pachybrachyini

- Griburius larvatus* (Newn.). Calhoun Co.  
*Griburius scutellaris* (F.). Washington Co., Crawford Co.  
*Pachybrachis atomarius* (Melsh.). Washington Co., Sebastian Co., Montgomery Co., Pulaski Co.  
*Pachybrachis bivittatus* (Say). Washington Co.  
*Pachybrachis carbonarius* Hald. Washington Co., Crawford Co., Sebastian Co., Johnson Co., Howard Co.; on *Desmodium*.  
*Pachybrachis cephalicus* (Melsh.). Sebastian Co.  
*Pachybrachis confederatus* Fall. Conway Co., Jackson Co., Franklin Co., Marion Co.; on cotton.  
*Pachybrachis hepaticus* (Melsh.). Dallas Co., Carroll Co.  
*Pachybrachis luridus* (F.). Washington Co., Johnson Co., Arkansas Co.  
*Pachybrachis m-nigrum* (Melsh.). Washington Co., Franklin Co.  
*Pachybrachis othonus* (Say). Washington Co., Madison Co.  
*Pachybrachis pallidipennis* Suffr. Jackson Co.; on evening primrose.  
*Pachybrachis peccans* Suffr. Crawford Co., Carroll Co., Lincoln Co., Conway Co.; species collected on willow, alfalfa, cotton, soybean and *Desmodium*.  
*Pachybrachis pectoralis* (Melsh.). Washington Co.; collected at light.  
*Pachybrachis pinicola*, sp. n. Nevada Co.; on pine.  
*Pachybrachis praeclarus* Weise. Washington Co., Crawford Co.; on *Desmodium*.  
*Pachybrachis pubescens* (Oliv.). Benton Co.  
*Pachybrachis roboris* Fall. Johnson Co., Little Rock (3); on *Clanotus* flowers.  
*Pachybrachis sobrinus* Hald. Washington Co., Crawford Co.; on locust and soybean.  
*Pachybrachis subfasciatus* Lec. Washington Co., Hampton; collected at light.  
*Pachybrachis tridens* (Melsh.). Washington Co., Franklin Co., Polk Co.  
*Pachybrachis trinotatus* (Melsh.). Washington Co. (3)  
*Pachybrachis vestigialis* Fall. Washington Co., Hempstead Co., Franklin Co., Polk Co., Jackson Co.; on alfalfa, spanish needle and flowers of *Erigeron*.

## Tribe Cryptocephalini

- Cryptocephalus calidus* Hald. Washington Co., Lee Co., Conway Co.  
*Cryptocephalus egregius* Schaeff. Arkansas (6).  
*Cryptocephalus fulguratus* Lec. Benton Co., Washington Co., Hempstead Co., Crawford Co.; on soybean.  
*Cryptocephalus guttulatus* Oliv. Washington Co.; on loblolly pine.  
*Cryptocephalus leucomelas* Suffr. Benton Co., Washington Co.  
*Cryptocephalus mucoreus* Lec. Washington Co.  
*Cryptocephalus mutabilis* Melsh. Benton Co., Washington Co., St. Francis Co., Johnson Co.  
*Cryptocephalus nanus* F. Arkansas.  
*Cryptocephalus quadrimaculatus* Say. Washington Co., Crawford Co., Johnson Co.  
*Cryptocephalus quadruplex* Newn. Washington Co., Johnson Co.  
*Cryptocephalus schreibersi* Suffr. Howard Co., Calhoun Co., Bradley Co.

- Cryptocephalus tinctus* Lec. Washington Co., Johnson Co.; on peach.  
*Cryptocephalus venustus* F. Benton Co., Washington Co., Crawford Co., Conway Co., Lawrence Co., Cleburne Co., St. Francis Co., Polk Co., Montgomery Co., Pulaski Co., Grant Co., Dallas Co., Drew Co., Arkansas Co., Hempstead Co., Miller Co.  
*Bassareus brunniipes* (Oliv.). Washington Co., Mississippi Co., Hempstead Co., Dallas Co., Jefferson Co., Lincoln Co., Lee Co., Cleburne Co., Conway Co.  
*Bassareus lituratus* (F.). Washington Co., Polk Co.  
*Bassareus mammifer* (Newn.). Washington Co., Logan Co., Pulaski Co.  
*Diachus auratus* (F.). Washington Co., Crawford Co., Franklin Co., Miller Co.; on soybean and *Desmodium*.  
*Diachus nanus* (Er.). Lawrence Co.

## Subfamily Chlamisinae

- Exema dispar* Pierce. Washington Co., Lee Co.  
*Chlamisus plicata* (F.). Washington Co., Drew Co., Crawford Co., Johnson Co.

## Subfamily Eumolpinae

## Tribe Chrysodini

- Chrysodian globosa* (Oliv.). Johnson Co., Sevier Co., Washington Co., Franklin Co.; on crimson clover.  
*Nodonota clypealis* Horn. Washington Co., Benton Co., Crawford Co., Mississippi Co., St. Francis Co., Lee Co., Arkansas Co., Saline Co., Hot Springs Co., Montgomery Co., Hempstead Co., Perry Co.; on *Desmodium*.  
*Nodonota puncticollis* (Say). Washington Co., Carroll Co., Crawford Co., Franklin Co., Izard Co., Mississippi Co., Lincoln Co., Miller Co., Dallas Co.; on cotton.  
*Nodonota tristis* (Oliv.). Washington Co., Crawford Co., Pulaski Co., Lee Co., Hempstead Co., Carroll Co.; on soybean, willow and *Desmodium*.

## Tribe Colaspini

- Colaspis brunnea* (F.). Washington Co., Crawford Co., Logan Co., Mississippi Co., Benton Co., Lincoln Co., Drew Co., Arkansas Co., Cicot Co., Clay Co., Independence Co., White Co., Conway Co., Lee Co., Hempstead Co., Lawrence Co., Johnson Co., Desha Co.; on soybean, *Lespedeza*, sweet potato and cotton, also at light and black light.  
*Colaspis favosa* Say. Benton Co., Washington Co., Arkansas Co., Sebastian Co.  
*Colaspis pini* Barber. Logan Co., Hot Springs Co., Hempstead Co., Nevada Co., Calhoun Co., Johnson Co.; on pine, also at light.  
*Rhaddopterus praetextus* (Say). Conway Co., Washington Co., Crawford Co., Bradley Co., Faulkner Co.; on cotton and soybean.

## Tribe Scelodontini

- Graphops curtipennis* Blake. Green Co., Prairie Co., Arkansas Co., Drew Co.; on broom sedge.  
*Graphops pubescens* (Melsh.). Washington Co., Mississippi Co., Crawford Co.; on soybean and oat, also at light.  
*Graphops simplex* (Lec.) Marion Co.

## Tribe Leprotini

- Xanthonia decemnotata* (Say). Washington Co., Logan Co.  
*Xanthonia villosula* (Melsh.). Benton Co., Washington Co., Franklin Co., Clark Co., Bradley Co.  
*Fidia longipes* (Melsh.). Washington Co., Madison Co., Benton Co.  
*Fidia viticida* Walsh. Washington Co., Conway Co., Crawford Co.; on grape, soybean and cotton.

## Tribe Metachromini

- Metachroma aeneicolle* Horn. Bradley Co., Washington Co., Dallas Co., Hempstead Co.  
*Metachroma interruptum* (Say). Arkansas Co.  
*Metachroma pallidum* (Say). Arkansas Co., Drew Co., Bradley Co.; on red oak.  
*Metachroma puncticolle* Lec. Hempstead Co.; on pine.

## Tribe Edusellini

- Thymnes metasternalis* (Crotch). Franklin Co., Yell Co.  
*Thymnes tricolor* (F.). Washington Co., Logan Co.

## Tribe Myochroini

- Myochrous denticollis* (Say). Washington Co., Lawrence Co., Mississippi Co., Jackson Co., Pope Co., Conway Co., Crittenden Co., Lonoke Co., Lee Co., Phillips Co., Arkansas Co., Desha Co., Hempstead Co., Little River Co., Miller Co., Jefferson Co., Lafayette Co., Randolph Co., Chicot Co., Poinsett Co.; on broom sedge, wheat, cotton, soybean, alfalfa, *Lespedeza*, also at light.  
*Myochrous squamosus* Lec. Jackson Co.  
*Glyptoscelis albicans* Baly. Pine Bluff (1).  
*Glyptoscelis cryptica* (Say). Pine Bluff (1).

## Tribe Typophorini

- Typophorus viridicyaneus* Crotch. Benton Co., Washington Co., Lawrence Co., Poinsett Co.  
*Paria fragariae* Wilcox. Washington Co., Clay Co., Monroe Co., Jefferson Co., Drew Co., Nevada Co., Hempstead Co., Conway Co.; on strawberry and broom sedge, also at light.  
*Paria opacicollis* Lec. Washington Co., Franklin Co.; on cotton.  
*Paria quadrinotata* (Say). Washington Co.  
*Paria sellata* Horn. Mississippi Co., Conway Co., Hot Springs Co., Crawford Co.; on soybean.  
*Paria sexnotata* (Say). Clay Co., Hempstead Co., Drew Co., Craighead Co., Crawford Co., Calhoun Co., Mississippi Co.; on broom sedge and loblolly pine, also at Malaise trap.  
*Paria thoracica* (Melsh.). Washington Co., Crawford Co.; on alfalfa and soybean.

## Tribe Corynodini

- Chrysochus auratus* (F.). Benton Co., Washington Co., Logan Co.

## Subfamily Chrysomelinae

## Tribe Zygommatini

- Zygommatina heterothecae* Linell. Crawford Co.

- Zygommatina suturalis* (F.). Washington Co., Conway Co., Pike Co., Little River Co., Ashley Co., Montgomery Co., Crawford Co., Clay Co.; on *Lespedeza*.  
*Zygommatina suturalis casta* Rogers. Washington Co., Franklin Co.

## Tribe Doryphorini

- Labidomera clivicollis* (Kirby). Crawford Co., Logan Co., Conway Co., Arkansas Co., Crittenden Co., Franklin Co., Washington Co.; on milkweed.  
*Labidomera clivicollis rogersi* Lec. Crawford Co., Mississippi Co., Crittenden Co.  
*Leptinotarsa decemlineata* (Say). Washington Co., Mississippi Co., Arkansas Co., Hempstead Co., Nevada Co., Chicot Co., Crawford Co.; at black light trap.  
*Leptinotarsa juncta* (Germ.). Lee Co., Lincoln Co.  
*Calligrapha bidenticola* Brown. Washington Co., Lonoke Co., Clay Co., Johnson Co.; on *Rubus*.  
*Calligrapha multipunctata bigsbyana* (Kby.). Washington Co., Conway Co.; on willow.  
*Calligrapha scalaris* Lec. Franklin Co.

## Tribe Chrysomelini

- Chrysolina auripennis* (Say). Washington Co.  
*Phaedon viridis* (Melsh.). Washington Co.,  
*Gastrophysa cyanea* (Melsh.). Benton Co., Washington Co., Crawford Co., Franklin Co., Newton Co., Craighead Co., Mississippi Co., Poinsett Co., St. Francis Co., Sevier Co.; on dock.  
*Chrysolina interrupta* F. Madison Co., Franklin Co., Hempstead Co.  
*Chrysolina knabi* Brown. Mississippi Co., Bentonville (2); on willow.  
*Chrysolina scripta* F. Washington Co., Franklin Co., Conway Co., Mississippi Co., Pulaski Co., Lee Co., Lincoln Co., Hempstead Co., Little River Co., Arkansas Co.; on cottonwood, also at black light trap.

## Tribe Prasocurini

- Hydrothassa vittata* (Oliv.). Izard Co.

## Subfamily Galerucinae

- Monocesta coryli* (Say). Washington Co.  
*Derspidea brevicollis* (Lec.). Conway Co., Pulaski Co.  
*Trirhabda bacharidis* (Weber.). Arkansas Co.; collected by black light trap.  
*Trirhabda canadensis* (Kirby). Baxter Co.  
*Galerucella nymphaeae* (L.). Lincoln Co.  
*Pyrrhalta luteola* (Mull.). Washington Co., Lafayette Co., Drew Co.  
*Ophraella integra* (Lec.). Little River Co., Hempstead Co., Lafayette Co.; on alfalfa and evening primrose.  
*Ophraella notulata* (F.). Washington Co., Arkansas Co., Cross Co., Johnson Co., Lawrence Co.; on broom sedge.  
*Ophraella sexvittata* (Lec.). Conway Co.; on weeds.  
*Monoxia pallida* Blake. Pulaski Co.; on lamb's-quarters.  
*Paratriarius dorsatus* (Say). Arkansas (7).  
*Diabrotica tripennis* (Say). Washington Co., Newton Co., Cleburne Co., Sebastian Co., Yell Co., Perry Co., Arkansas Co., Franklin Co.; on flowers of *Monarda*.  
*Diabrotica balteata* Lec. Washington Co., Hempstead Co.  
*Diabrotica longicornis* (Say). Conway Co.  
*Diabrotica picticornis* Horn. Washington Co.; on Umbelliferae.

*Diabrotica undecimpunctata howardi* Barb. Washington Co., Crawford Co., Randolph Co., Mississippi Co., Conway Co., Lonoke Co., Arkansas Co., Jefferson Co., Lincoln Co., Desha Co., Hempstead Co., Union Co.; on alfalfa, oats, corn, also at black light trap.

*Acalymma vittata* (F.). Washington Co., Crawford Co., Conway Co., Greene Co., Hempstead Co., Lafayette Co., Drew Co., Mississippi Co.; on watermelon, also at light.

*Cerotoma atrofasciata* Jac. Washington Co.; on Umbelliferae.

*Cerotoma trifurcata* (Forst.). Washington Co., Madison Co., Johnson Co., Randolph Co., Mississippi Co., Yell Co., Conway Co., Cross Co., Pulaski Co., Lonoke Co., Sevier Co., Hempstead Co., Hot Springs Co., Arkansas Co., Lincoln Co., Desha Co.; on cotton and young soybean.

*Phyllecthris dorsalis* (Oliv.). Washington Co., Franklin Co., Crawford Co.; on soybean and at Malaise trap, numerous in wooded area.

*Phyllecthris gentilis* (Lec.). Washington Co., Franklin Co.

*Calomicrus burnneus* (Cratch.). Pope Co.

*Scelolyperus chaquetaucus* Wilcox. Arkansas: Mt. Magazine top (7).

*Phyllobrotica limbata* (F.). Washington Co., Sharp Co.

## Subfamily Alticinae

*Blepharida rhois* (Forst.). Washington Co., Johnson Co., Nevada Co., Franklin Co.

*Pachyonychus paradoxus* Melsh. Sevier Co., Lincoln Co., Johnson Co.

*Distingmoptera pilosa* (Ill.). Monroe Co., Calhoun Co.; on loblolly pine and broom sedge.

*Oedionychus gibbitarsa* (Say). Washington Co., Crawford Co., Newton Co., Benton Co.

*Oedionychus miniata* (F.). Washington Co., Johnson Co., Independence Co.

*Oedionychus petaurista* (F.). Washington Co.; on loblolly pine.

*Oedionychus quercata* (F.). Washington Co., Crawford Co., Stone Co., Franklin Co.; on ash and mullein.

*Oedionychus scalaris* Melsh. Drew Co., Hempstead Co.; collected at light.

*Oedionychus sexmaculata* (Ill.). Washington Co., Calhoun Co., Hempton Co., Bradley Co.

*Oedionychus subvittata* Horn. Franklin Co., Faulkner Co.

*Oedionychus thoracica* (F.). Washington Co.

*Oedionychus thymoides* Crotch. Washington Co., Crawford Co., Franklin Co., Randolph Co., Clay Co., Prairie Co., Conway Co.; on *Lespedeza*.

*Oedionychus vians* (Ill.). Randolph Co., Craighead Co., Little River Co.

*Oedionychus obsidianus* (F.). Arkansas (4).

*Disonycha admirabilis* Blatch. Washington Co., Johnson Co., Conway Co.

*Disonycha alternata* (Ill.). Washington Co.

*Disonycha caroliniana* (F.). White Co., Calhoun Co., Little River Co.

*Disonycha collata* (F.). Washington Co., Crawford Co., Conway Co., Lee Co.

*Disonycha discoidea* (F.). Washington Co., Johnson Co., Pike Co.

*Disonycha glabrata* (F.). Benton Co., Washington Co., Crawford Co., Conway Co., Scott Co., St. Francis Co., Lee Co., Benton Co.; on soybean and alfalfa.

*Disonycha latifrons* Schffr. Grant Co.

*Disonycha triangularis* (Say). Washington Co., Crawford Co., Franklin Co., Faulkner Co.; on soybean.

*Disonycha xanthomelas* (Dalm.). Washington Co., Crawford Co., Lafayette Co.; on soybean.

*Altica chalybea* Ill. Washington Co.

*Altica foliaceae* Lec. Washington Co., Jefferson Co., Lincoln Co., Hempstead Co., Mississippi Co.; on cowpeas.

*Altica ignita* Ill. Crawford Co., Johnson Co., Lawrence Co., Washington Co., Polk Co.; on wheat and *Desmodium*.

*Altica litigata* Fall. Washington Co., Crawford Co., Conway Co., Mississippi Co., Lee Co., Polk Co., Hot Springs Co., Clark Co., Pike Co., Arkansas Co., Desha Co., Drew Co., Little River Co., Hempstead Co., Van Buren Co., Johnson Co., Yell Co., Sevier Co., Chicot Co.; on evening primrose, dock, wheat, cowpeas, soybean, tomato, cotton, sweet potato, myrtle, also at light and black light trap.

*Altica nana* (Crotch). Washington Co., Conway Co., Franklin Co., Mississippi Co.; on corn.

*Altica punctipennis* Lec. Washington Co.

*Altica subplicata* Lec. Faulkner Co., Pulaski Co., Arkansas Co., Desha Co.; on willow.

*Luperaltica nigripalpis* (Lec.). Cleburne Co.; on *Lespedeza*.

*Monomacra iris* (Oliv.). Benton Co., Boone Co., Washington Co.

*Monomacra tibialis* (Oliv.). Benton Co., Washington Co., St. Francis Co., Pulaski Co., Lincoln Co.

*Strabala rufa* (Ill.). Johnson Co., Lee Co., Conway Co., Howard Co., Lafayette Co., Randolph Co.; on alfalfa, tomato.

*Mantura floridana* Crotch. Washington Co., Crawford Co., Franklin Co., Faulkner Co., White Co., Calhoun Co., Bradley Co.

*Hornaltica atriventris* (Melsh.). Washington Co., Crawford Co.; on soybean.

*Trichaltica scabricula* (Crotch). Washington Co., Stone Co.; on ash.

*Epitrix cucumeris* Harris. Washington Co., Faulkner Co., Crawford Co.; on *Rumex* and *Desmodium*.

*Epitrix fuscata* Crotch. Benton Co., Washington Co., Baxter Co., Johnson Co., Scott Co., Yell Co., Lonoke Co., Hot Spring Co., Hempstead Co., Pulaski Co., Bradley Co., Chicot Co., Conway Co., Crawford Co., Clark Co., Franklin Co.; on *Solanum carolinense*, eggplant, mullein, cotton, soybean, also at light.

*Epitrix hirtipennis* (Melsh.). Washington Co., Pope Co., Craighead Co., Hempstead Co.; on tomato, eggplant.

*Orthaltica copalina* (F.). Washington Co., Crawford Co., Franklin Co., Van Buren Co., Polk Co.; on *Rhus*, also at light.

*Orthaltica melina* Horn. Washington Co.

*Derocephala erythropus* (Melsh.). Washington Co., Crawford Co., Franklin Co.; on *Celtis* foliage, also at Malaise trap and black light trap.

*Chalcoides chittendeni* Heik. Washington Co., Mississippi Co., Conway Co., Hempstead Co., Arkansas Co., Crawford Co.; on willow.

*Chalcoides violacea* (Melsh.). Faulkner Co.; on honeysuckle.

*Chaetocnema confinis* Crotch. Washington Co., Crawford Co., Lonoke Co., Chicot Co., Yell Co.; on wheat and soybean.

*Chaetocnema cribrifrons* Lec. Washington Co., Lee Co., Sevier Co.



*Chaetocnema denticulata* (Ill.). Washington Co., Crawford Co., Faulkner Co., Lonoke Co., Chicot Co., Mississippi Co., Greene Co., Pulaski Co.; on *Panicum*, sweet potato, broom sedge, alfalfa, crabgrass, soybean.

*Chaetocnema pulicaria* Melsh. Benton Co., Washington Co., Crawford Co., Franklin Co., Baxter Co., Randolph Co., Lawrence Co., Independence Co., Mississippi Co., Conway Co., Faulkner Co., Lonoke Co., Lee Co., Desha Co., Arkansas Co., Lincoln Co., Chicot Co., Hempstead Co., Lafayette Co.; on alfalfa and soybean.

*Systema blanda* (Melsh). Washington Co., Logan Co., Mississippi Co., Crittenden Co., Lonoke Co.; on sweet potato.

*Systema elongata* (F.). Washington Co., Crawford Co., Carroll Co., Mississippi Co., Pope Co., Conway Co., Pulaski Co., Lee Co., Lonoke Co., Lincoln Co., Hempstead Co., Lafayette Co.; on soybean, alfalfa and cotton.

*Systema frontalis* (F.). Washington Co., Conway Co., Crittenden Co., Pulaski Co., Arkansas Co., Desha Co., Lonoke Co.; on cotton and sweet potato.

*Systema hudsonias* (Forst.). Arkansas Co., Franklin Co.

*Systema marginalis* (Ill.). Yell Co.; on wheat.

*Aphthona insolita* (Melsh.). Hempstead Co.

*Glyptina bicolor* Horn. Washington Co., Calhoun Co., Polk Co.

*Glyptina brunnea* Horn. Washington Co., Conway Co.; on cotton.

*Glyptina cerina* (Lec.). Washington Co.

*Glyptina cyanipennis* Crotch. Washington Co.

*Glyptina spuria* Lec. Washington Co., Conway Co., Faulkner Co.; on Compositae.

*Longitarsus melanurus* Melsh. Washington Co.

*Longitarsus testaceus* Melsh. Washington Co., Scott Co., Hempstead Co., Drew Co., Crawford Co.; on alfalfa and soybean.

*Longitarsus turbatus* Horn. Washington Co., Monroe Co.; on strawberry and oats.

*Longitarsus varicornis* Suffr. Washington Co., Hempstead Co., Arkansas Co.

*Phyllotreta aeneicollis* Crotch. Washington Co., Crawford Co.; on *Desmodium*.

*Phyllotreta albionica* (Lec.). Crawford Co.

*Phyllotreta bipustulata* (F.). Washington Co., Crawford Co., on turnips.

*Phyllotreta liebecki* Schffr. Perry Co.

*Phyllotreta striolata* (F.). Washington Co., Crawford Co., Jefferson Co.; on oats, also at Malaise trap.

*Phyllotreta zimmermanni* (Crotch). Washington Co., Crawford Co., Faulkner Co., Jefferson Co., Hempstead Co., Bradley Co., Mississippi Co.

*Palaeothona picta* (Say). Washington Co.

*Dibolia borealis* Chev. Benton Co., Washington Co., Crawford Co., Scott Co., Polk Co., Stone Co.

*Psylliodes convexior* Lec. Washington Co., Mississippi Co., Faulkner Co., Jefferson Co., Bradley Co., Crawford Co.; on mustard.

## Subfamily Hespinae

## Tribe Cephalolini

*Stenispis collaris* Baly. Washington Co.

*Anoplitis inaequalis* (Weber). Washington Co., Mississippi Co.

*Anoplitis ancoroides* Schffr. Washington Co., Hempstead

Co. (8); on soybean.

*Anoplitis rosea* (Weber). Washington Co., Mississippi Co.; on *Crataegus* and willow.

*Baltiosus ruber* (Weber). Benton Co., Washington Co., Arkansas Co., Polk Co., Mississippi Co.

*Chalepus bicolor* (Oliv.). Franklin Co., Polk Co.; collected in Malaise trap.

*Xenochalepus dorsalis* (Thunb.). Washington Co., Franklin Co., Hempstead Co., Nevada Co., Crawford Co.; on soybean.

*Xenochalepus horni* (Smith). Washington Co., Crawford Co., Sebastian Co.

*Xenochalepus mundulus* (Sand.). Washington Co.

*Xenochalepus scapularis* (Oliv.). Conway Co.; on plum and cypress.

## Tribe Uroplatini

*Octotoma plicatual* (F.). Washington Co., Hempstead Co., Conway Co.

*Brachycoryna melshimeri* (Crotch). Montgomery Co.

*Glyphuroplata porcata* (Melsh.). Washington Co.

*Microrhopala excavata* (Oliv.). Washington Co.

*Microrhopala rubrolineata vulnarata* Horn. Johnson Co.

## Subfamily Cassidinae

## Tribe Stolaini

*Chelymorpha cassidea* (F.). Washington Co., Clay Co., Sebastian Co., Hempstead Co.

## Tribe Cassidini

*Johthonota nigripes* (Oliv.). Washington Co., Hempstead Co., Mississippi Co.

*Agroiconota bivittata* (Say). Washington Co., Crawford Co., Randolph Co., Conway Co., Lonoke Co., St. Francis Co., Polk Co., Hempstead Co., Chicot Co.; on broom sedge, eggplant and *Erigeron*.

*Nuzonia pallidula* (Boh.). Benton Co., Washington Co., Clay Co., Conway Co., Sebastian Co., Scott Co., Montgomery Co., St. Francis Co., Lee Co., Lincoln Co., Hempstead Co., Desha Co.; on alfalfa, soybean, sweet potato, cotton, also at black light trap.

*Deloyala guttata* (Oliv.). Benton Co., Washington Co., Jackson Co., Crittenden Co., Desha Co., Crawford Co., Lawrence Co., Mississippi Co., Conway Co., Lonoke Co., Lincoln Co., Hempstead Co., Chicot Co., Arkansas Co., Perry Co.

*Plagiometriona clavata* (F.). Washington Co., Johnson Co., Miller Co., White Co.; on cotton, sweet potato.

*Metriona bicolor* (F.). Washington Co., Crawford Co., Madison Co., Lawrence Co., Conway Co., Lonoke Co., Lee Co., Arkansas Co., Lincoln Co., Hempstead Co., Chicot Co.

*Metriona purpurata* (Boh.). Washington Co.

## DESCRIPTIONS OF NEW FORMS

*Lema maculicollis* ab. *inornata*, nov.

Differs from typical form in having prothorax unicolorously dark red, without black spots. Head black with vertex and occiput red.

Elytra very dark blue. Length of body 3.7 mm.

Arkansas: Montgomery Co., 1 specimen - holotype; Logan Co. 22.IV. 1967, 1 specimen - paratype.

*Pachybrachis pinicola*, sp. nov.

Male. Head flavous, labrum whitish, anterior margin of clypeus, spots at bases of antennae, longitudinal stripe on vertex and occiput dark brown, apical joints of antennae infuscated. Prothorax flavous with brown punctures, forming 5 poorly limited spots (2,3). Scutellum black with fulvous spot. Elytra flavous with brown punctures, partly arranged in indistinct spots, humeral spot and preapical transverse band more distinct. Underside black, pygidium and hind margin of fifth sternite fulvous. Legs fulvous with whitish apices of femora.

Ocular lines developed, rather fine. Eyes separated by about 1.4 the length of the basal antennal joint. Antennae about  $\frac{3}{4}$  the length of the body, joints elongate, the third joint 1.5 times as long as the second.

Prothorax moderately narrowed in front, widest behind the middle, sides slightly convergent, surface alutaceous, thickly but somewhat unevenly punctured. Scutellum alutaceous, extremely finely punctured.

Elytra a little wider than the prothorax, rather deeply striate externally and on the posterior convexity, punctures confused in a scutellar area; eighth row more or less interrupted behind humerus, marginal interspace with one or two punctures; all surface alutaceous.

Anterior femora strongly thickened, claws of anterior tarsi distinctly enlarged (Fig. 1). Aedeagus, Figure 2. Length of body 2.5 mm, breadth 1.2 mm.

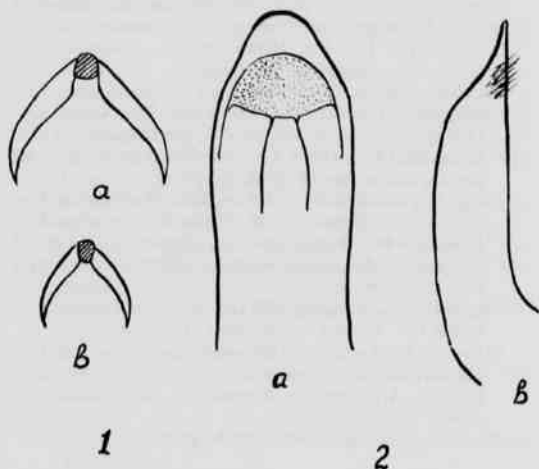


Figure 1. *Pachybrachis pinicola*, sp. n., claws of male; (a) fore leg; (b) hind leg.

Figure 2. *Pachybrachis pinicola*, sp. n., aedeagus; (a) dorsal; (b) lateral view.

Female. Pattern of elytra less distinct, sides of abdomen fulvous, body more robust. Eyes separated by about 1.6-1.7 the length of the basal antennal joint. Length 3.3 mm, breadth 1.6 mm.

This species is near *P. brevicollis* Lec. from Texas, Colorado, and Montana, but differs in having frons more broad, prothorax less transverse (1.4 against 1.7), ocular lines present, etc.

Arkansas, Nevada Co., 6 VI. 1962, on pine. Holotype (male) and two paratypes.

#### LITERATURE CITED

1. BLAKE, D. H. 1967. Revision of the beetles of the genus *Glyptoscelis*. U.S. Nat. Mus. Proc. 123 (3604): 1-53.
2. BROWN, W. I. 1956. The New World species of *Chrysomela* L. Canad. Entomology 88 (supp. 3): 1-54.
3. FALL, H. C. 1915. A revision of the North American species of *Pachybrachis*. Am. Entomol. Soc. Trans. 41:291-486.
4. HEIKERTINGER, F. 1940. Halticinae. Coleopt. Catalogue, pts. 166, 169.
5. MARX, E. I. F. 1957. A review of the subgenus *Donacia* in the Western Hemisphere. Am. Mus. Natur. Hist. Bull. 112 (art. 3):191-278.
6. WHITE, R. E. 1968. A review of the genus *Cryptocephalus* in America north of Mexico. Smithsonian Inst. U.S. Nat. Mus. Bull. 290:1-124.
7. WILCOX, I. A. 1965. A synopsis of the North American *Galerucinae*. New York State Mus. and Sci. Service Bull. 400:1-226.
8. BUTTE, J. G. 1969. Revision of the tribe Chalepini North of Mexico. IV. Genus *Sumitrosus* Butte. New York Entomol. Soc. V. 77.