

Neoadjuvant Breast Cancer HVFX 2011-2015

Sofia Braga

Neoadjuvant CT Breast Cancer: Why?

- Inoperable
- Inflammatory
- Stage III – any cN+
- Large operable cN0 w favorable biology
- Very important: pCR correlates w survival
- There is a metaanalysis statistical trend for favorable survival

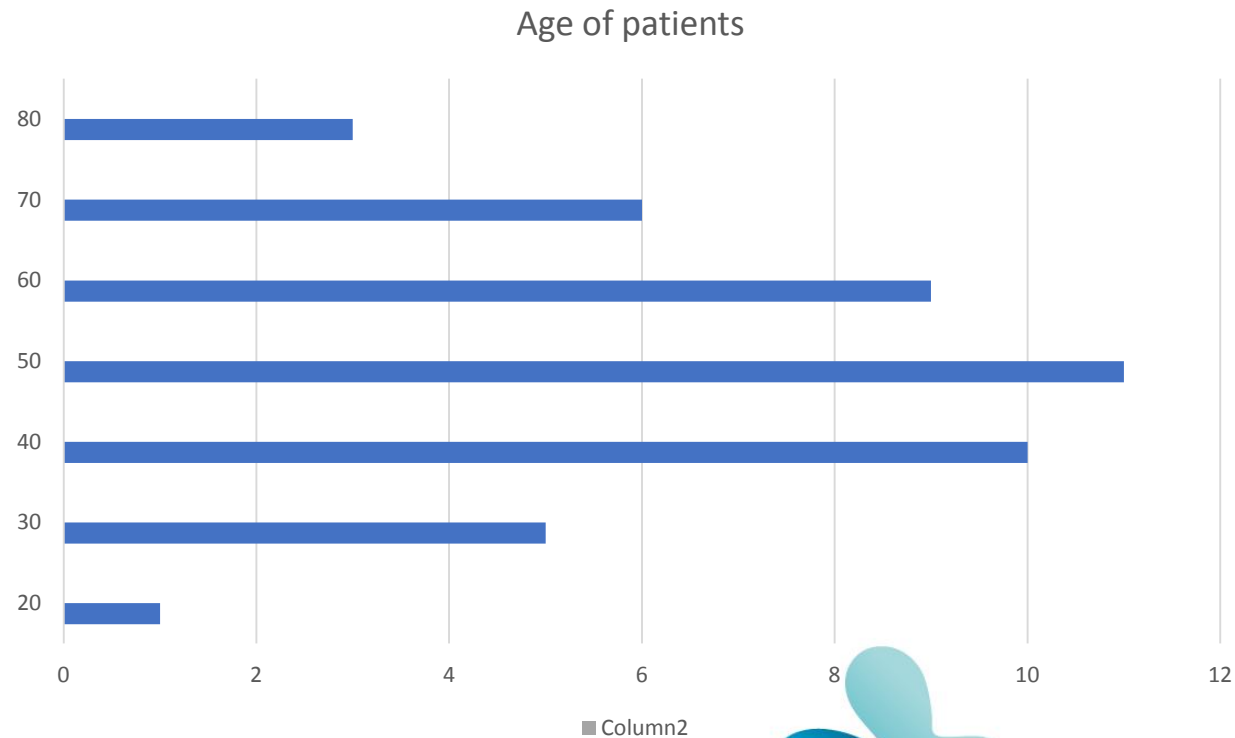


Neoadjuvant CT Breast Cancer HVFX 2011-2015

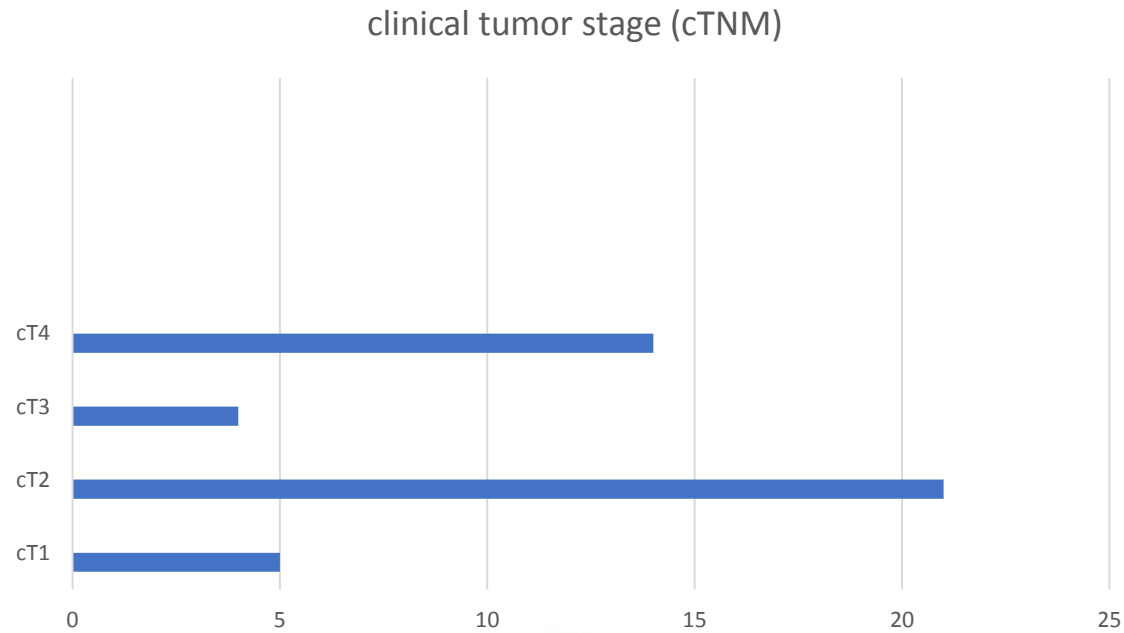
- N=45 patients
- 44 women, 1 man
- Median age 65



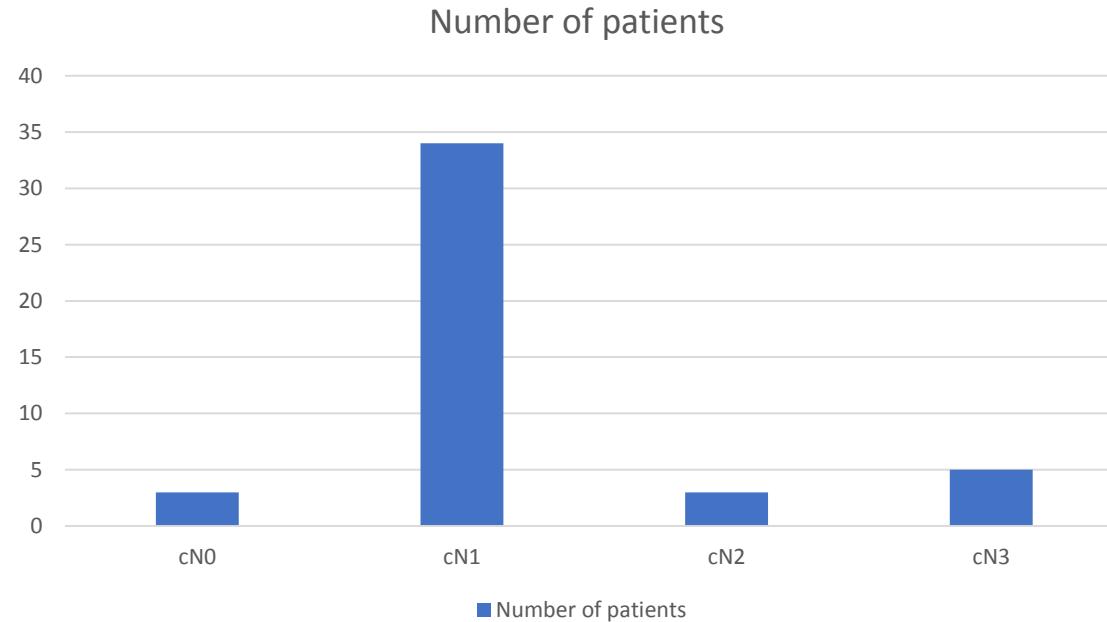
Neoadjuvant CT Breast Cancer HVFX 2011-2015: Age



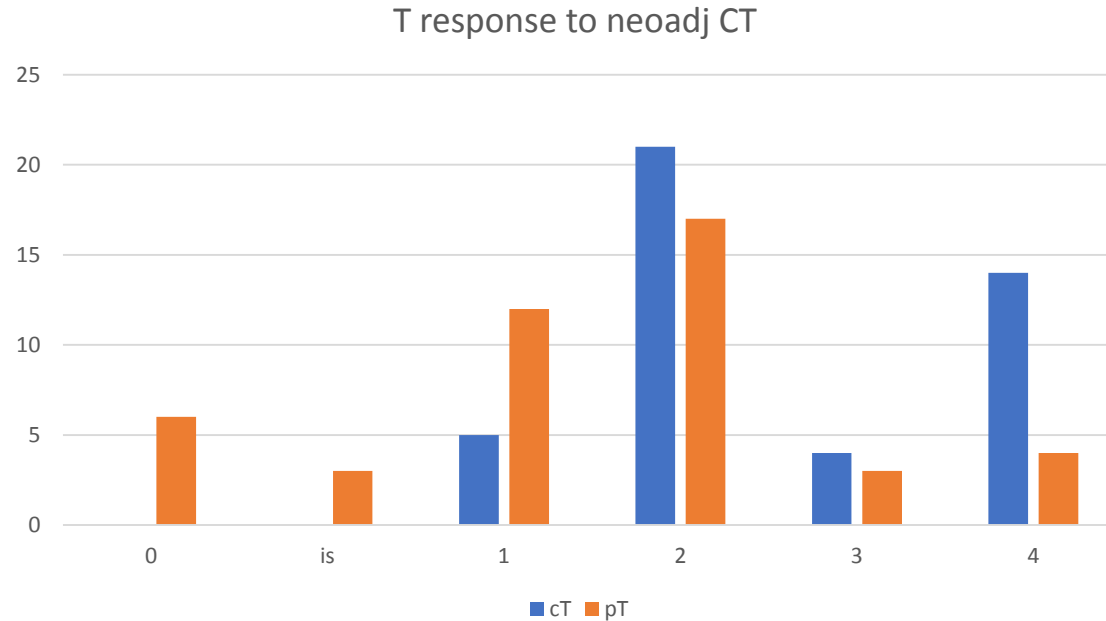
Neoadjuvant CT Breast Cancer HVFX 2011-2015: cT



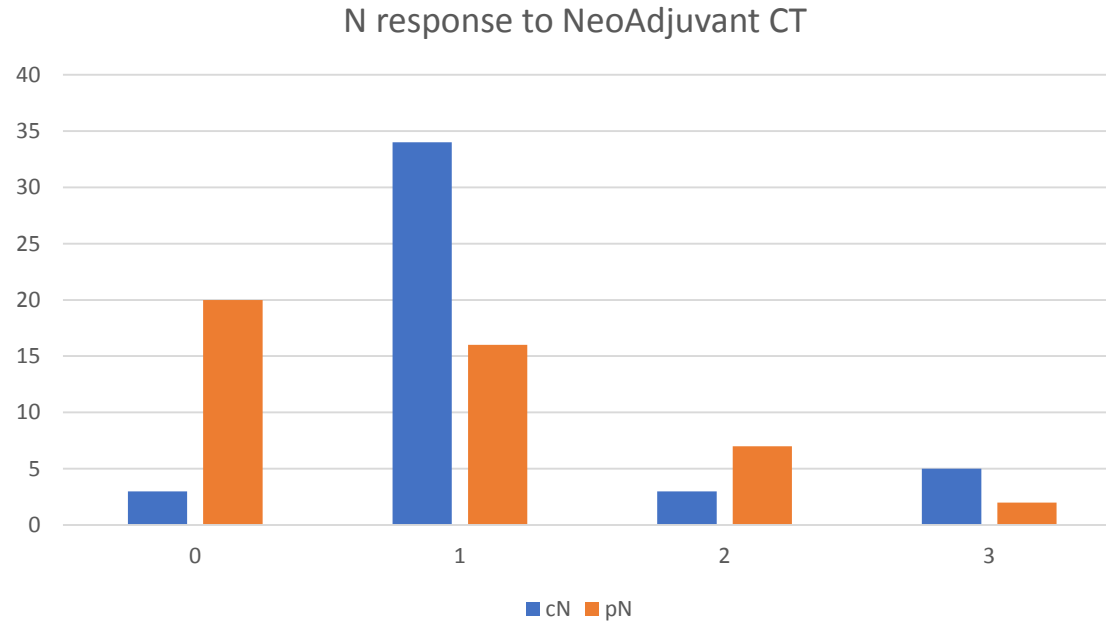
Neoadjuvant CT Breast Cancer HVFX 2011-2015: cN



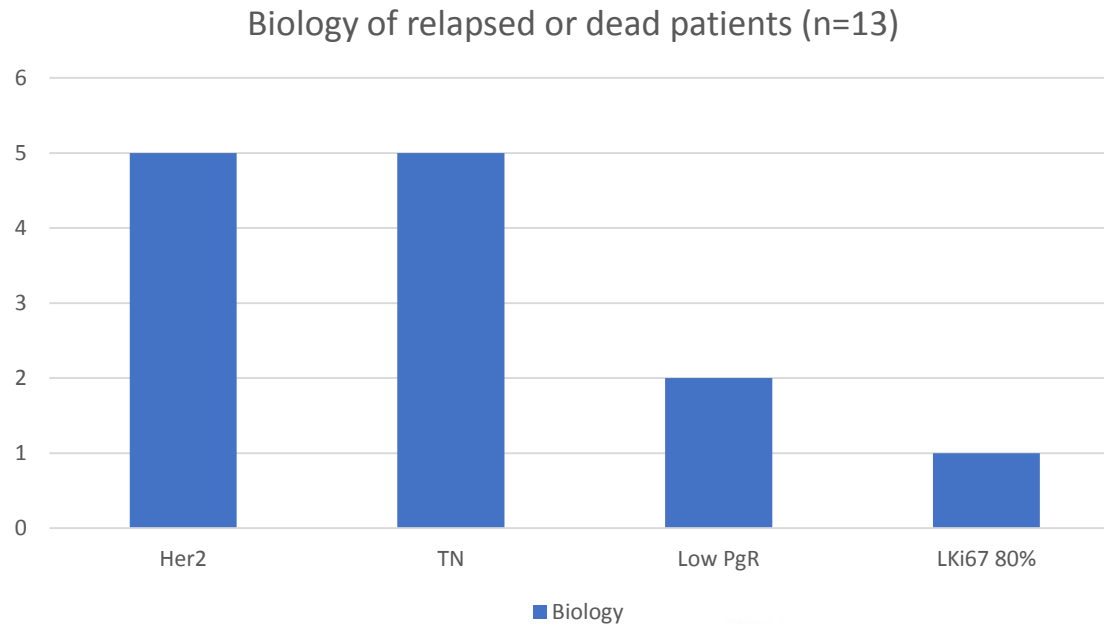
Neoadjuvant CT Breast Cancer HVFX 2011-2015: cT & pT



Neoadjuvant CT Breast Cancer HVFX 2011-2015: cN & pN

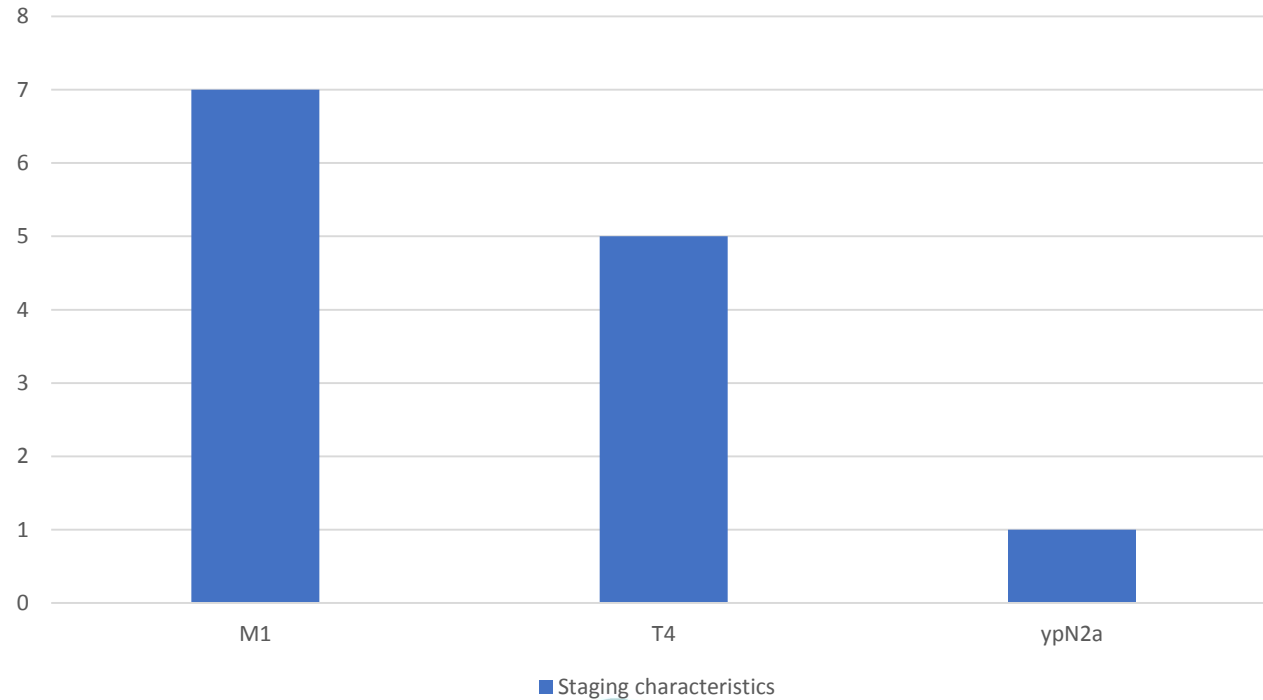


Neoadjuvant Breast Cancer HVFX 2011-2015: Relapse & death-biology



Neoadjuvant Breast Cancer HVFX 2011-2015: Relapse & death-staging

Staging characteristics of relapses or dead women



Hospital
Vila Franca de Xira



Neoadjuvant Breast Cancer HVFX 2011-2015: Conclusion

- Unfavorable staging still determinant in prognosis: tumor burden even w favorable biology
- The five TNBC in the dataset all have had DFS or OS events



Neoadjuvant Breast Cancer HVFX 2011-2015: Thank you!

sofia.braga@jmellosaude.pt

