



<b>Title</b>	On the simultaneous deployment of two single-particle mass spectrometers at an urban background and a roadside site during SAPUSS
<b>Author(s)</b>	Dall'Osto, M.; Beddows, David C. S.; McGillicuddy, Eoin; Esser-Gietl, Johanna K.; Harrison, Roy M.; Wenger, John C.
<b>Publication date</b>	2016-08-02
<b>Original citation</b>	Dall'Osto, M., Beddows, D. C. S., McGillicuddy, E. J., Esser-Gietl, J. K., Harrison, R. M. and Wenger, J. C. (2016) 'On the simultaneous deployment of two single-particle mass spectrometers at an urban background and a roadside site during SAPUSS', Atmospheric Chemistry and Physics, 16, pp.9693-9710. doi: 10.5194/acp-16-9693-2016
<b>Type of publication</b>	Article (peer-reviewed)
<b>Link to publisher's version</b>	<a href="http://www.atmos-chem-phys.net/16/9693/2016/">http://www.atmos-chem-phys.net/16/9693/2016/</a> <a href="http://dx.doi.org/10.5194/acp-16-9693-2016">http://dx.doi.org/10.5194/acp-16-9693-2016</a> Access to the full text of the published version may require a subscription.
<b>Rights</b>	© 2016, the Author(s). This work is distributed under the Creative Commons Attribution 3.0 License. <a href="https://creativecommons.org/licenses/by/3.0/">https://creativecommons.org/licenses/by/3.0/</a>
<b>Item downloaded from</b>	<a href="http://hdl.handle.net/10468/4139">http://hdl.handle.net/10468/4139</a>

Downloaded on 2017-09-05T01:00:43Z

Supplement of Atmos. Chem. Phys., 16, 9693–9710, 2016  
<http://www.atmos-chem-phys.net/16/9693/2016/>  
doi:10.5194/acp-16-9693-2016-supplement  
© Author(s) 2016. CC Attribution 3.0 License.



Atmospheric  
Chemistry  
and Physics  
Open Access  
EGU

*Supplement of*

## **On the simultaneous deployment of two single-particle mass spectrometers at an urban background and a roadside site during SAPUSS**

**Manuel Dall'Osto et al.**

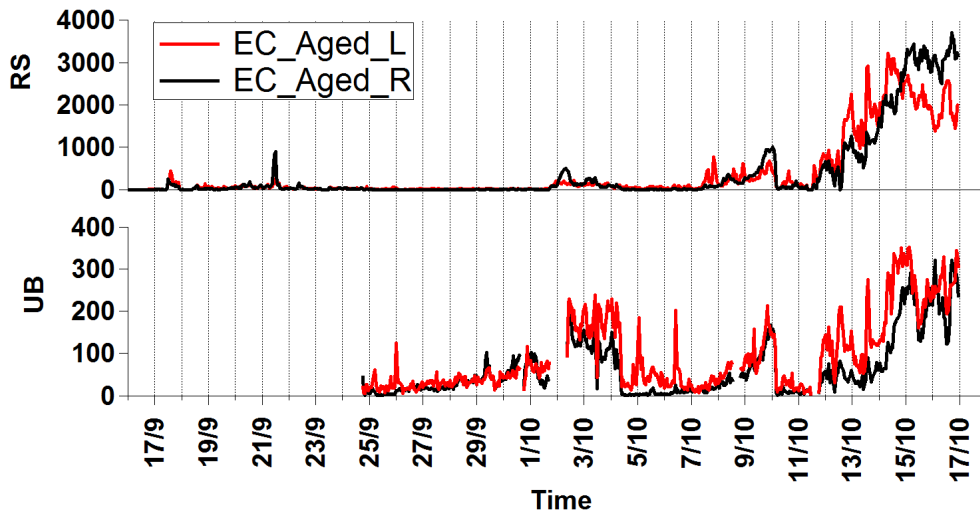
*Correspondence to:* Manuel Dall'Osto (dallosto@icm.csic.es)

The copyright of individual parts of the supplement might differ from the CC-BY 3.0 licence.

1

2

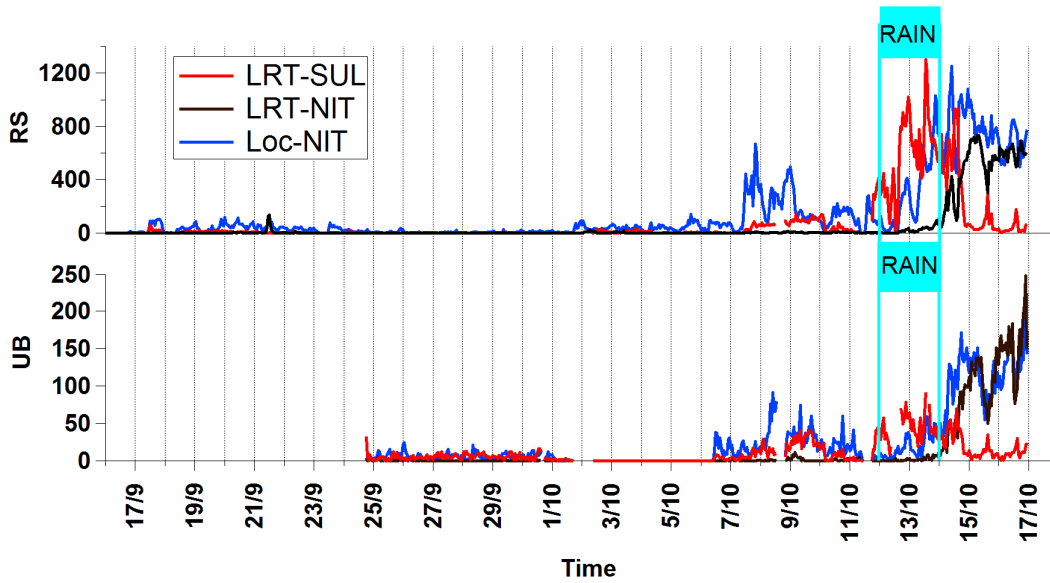
3



4

5

(a)



6

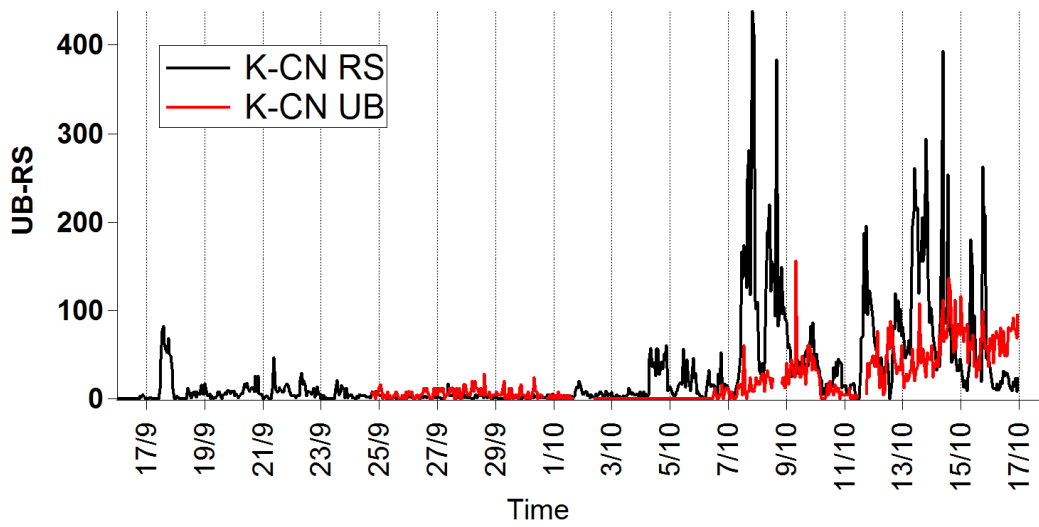
7

8

(b)

1

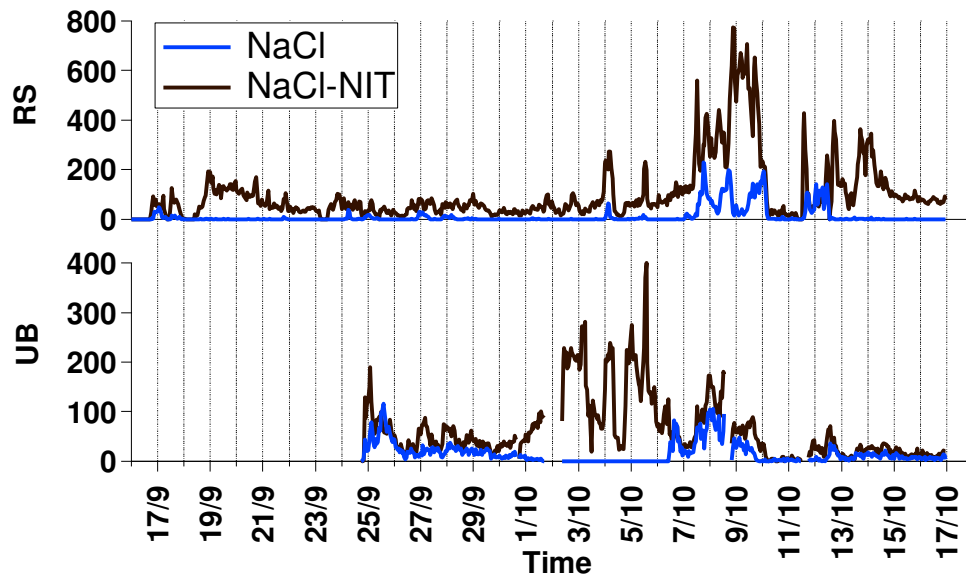
2



3

4

(c)



5

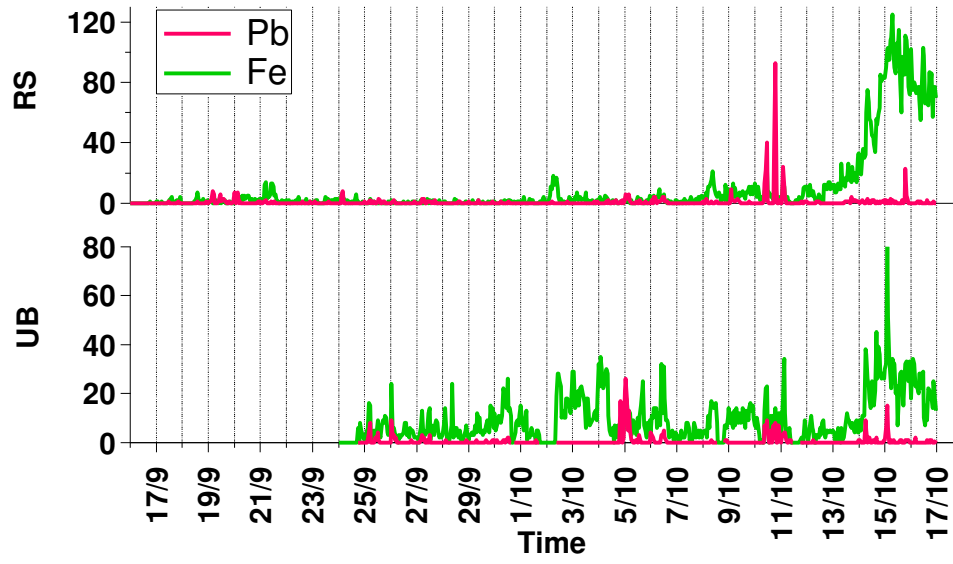
6

7

8

(d)

1

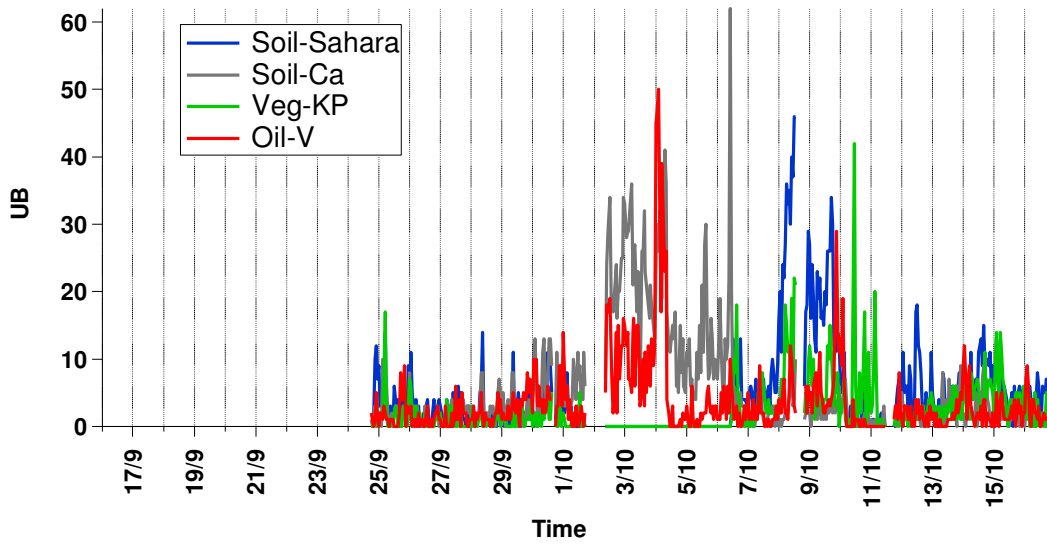


2

3

4

(e)

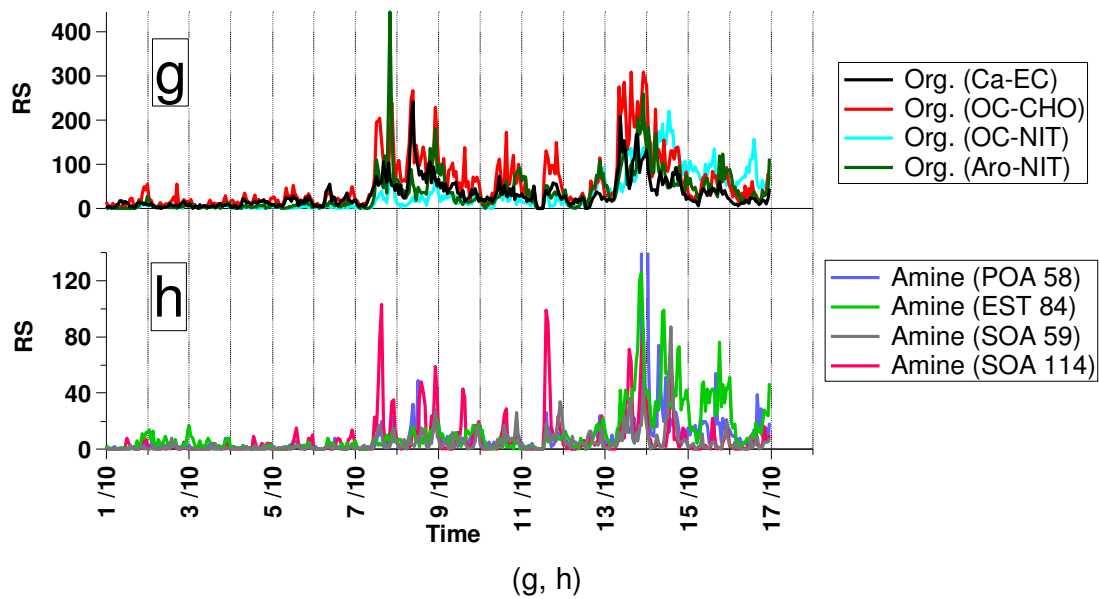


5

6

7

(f)



1  
2

3

4

5 Figure SI 1. Temporal trends of ATOFMS particle types

6

7

8

9

10

11

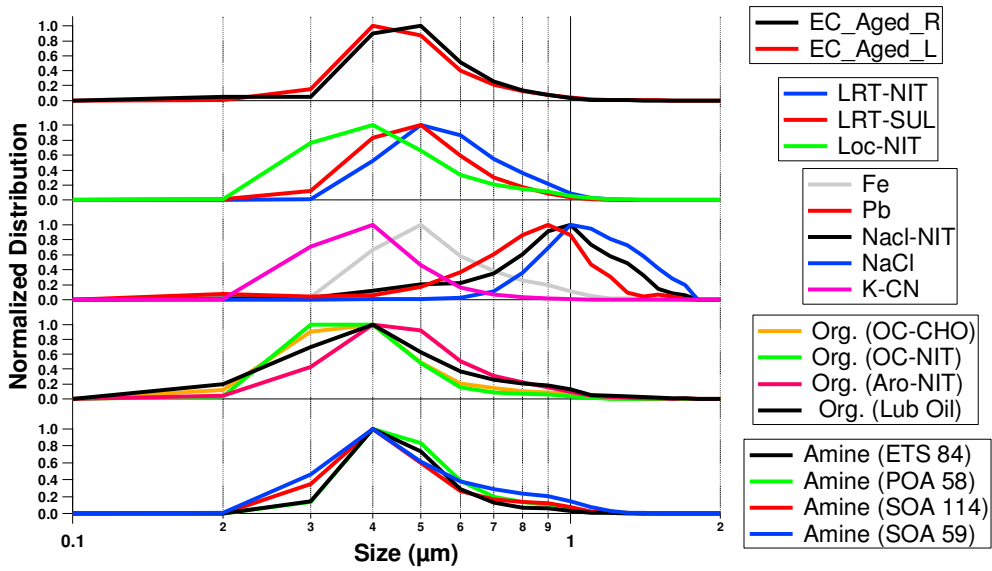
12

13

14

15

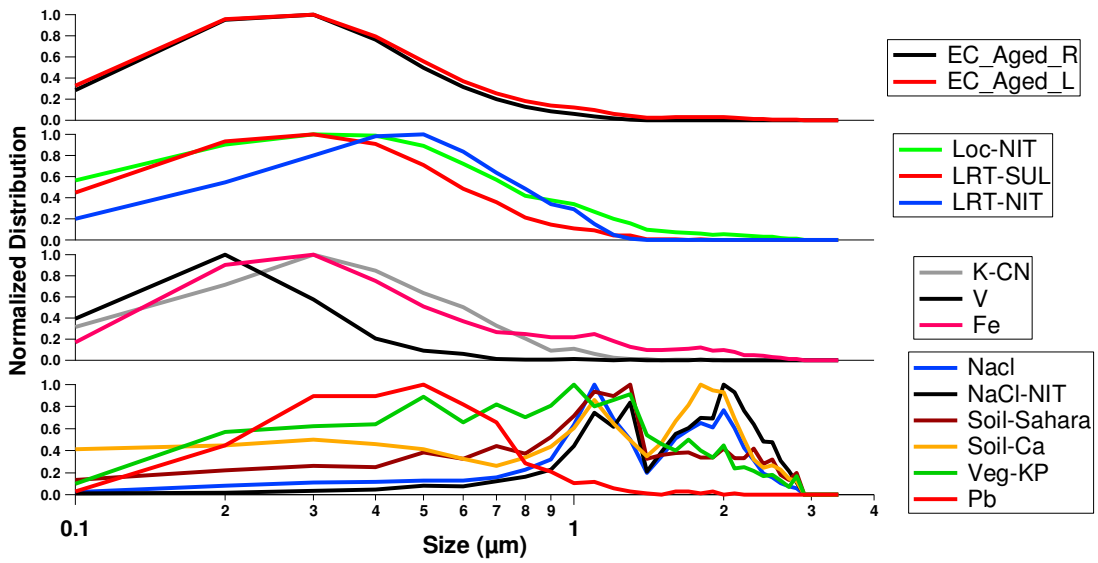
1



2

3

(a)



4

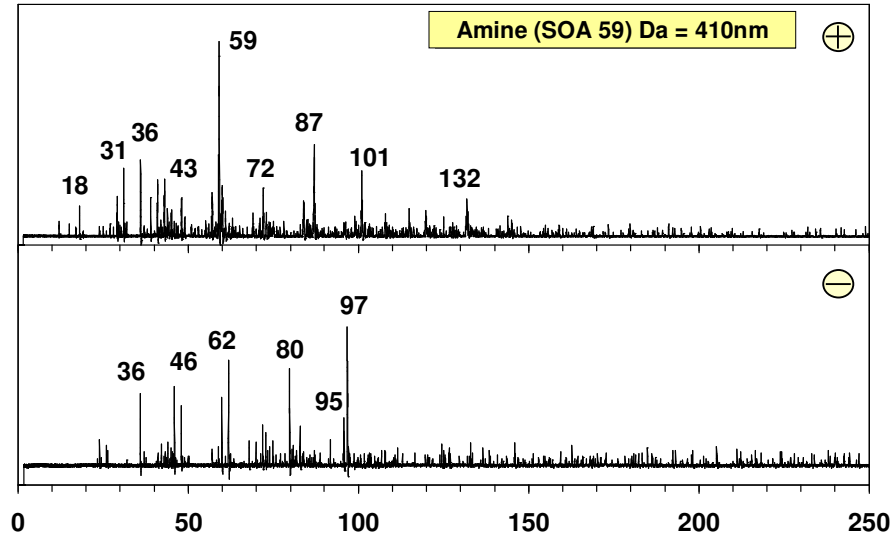
5

(b)

6

7 SI 2. Aerodynamic size ATOFMS modes for ATOFMS at RS (a) and UB (b)

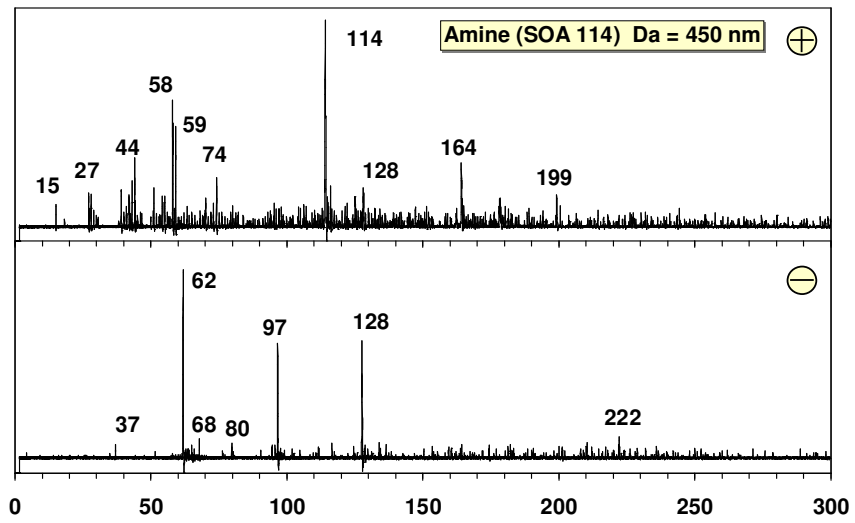
8



1

2 (a) Amine (SOA 59)

3



4

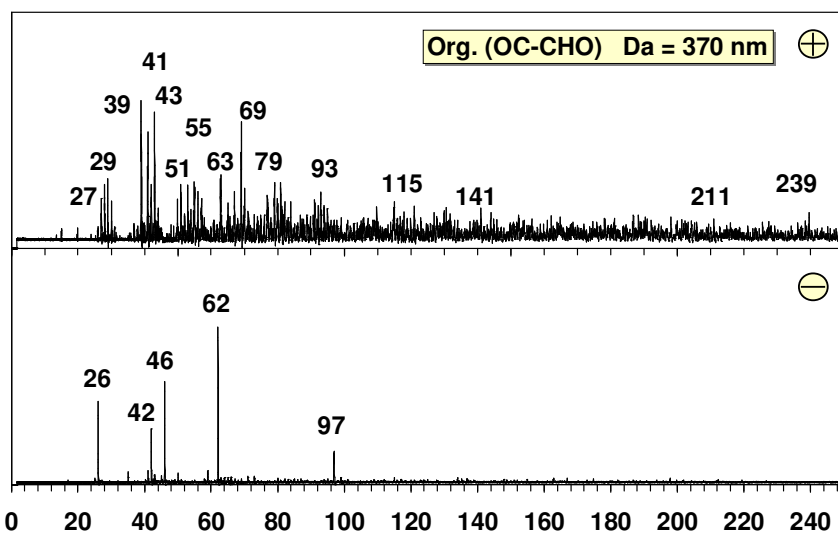
5 (b) Amine (SOA 114)

6

7

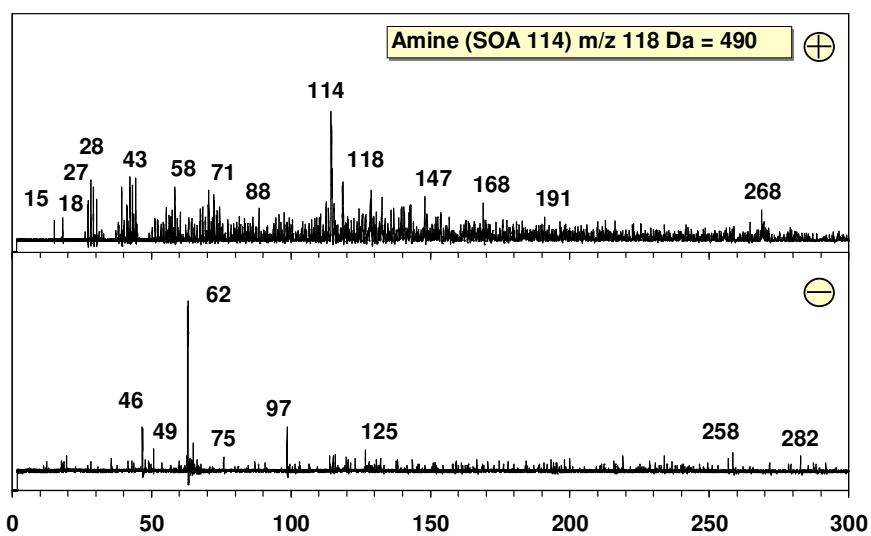


1



2

3 (c) Org. (OC-CHO)



4

5 (d) Amine (SOA 114) with  $m/z$  118

6

7 SI 3 a-d: Single particle mass spectra of selected ATOFMS particle types

8