



# Plant water resource partitioning and isotopic fractionation during transpiration in a seasonally dry tropical climate

Lien De Wispelaere<sup>1</sup>, Samuel Bodé<sup>1</sup>, Pedro Hervé-Fernández<sup>1,2</sup>, Andreas Hemp<sup>3</sup>, Dirk Verschuren<sup>4,\*</sup>, and Pascal Boeckx<sup>1,\*</sup>

<sup>1</sup>Isotope Bioscience Laboratory – ISOFYS, Faculty of Bioscience Engineering, Ghent University, Coupure links 653, 9000 Gent, Belgium

<sup>2</sup>Laboratory of Hydrology and Water Management, Faculty of Bioscience Engineering, Ghent University, Coupure links 653, 9000 Gent, Belgium

<sup>3</sup>Department of Plant Systematics, University of Bayreuth, 95440 Bayreuth, Germany

<sup>4</sup>Limnology Unit, Department of Biology, Ghent University, Ledeganckstraat 35, 9000 Gent, Belgium

\*These authors contributed equally to this work.

Correspondence to: Lien De Wispelaere (lien.dewispelaere@ugent.be)

Received: 25 August 2016 – Published in Biogeosciences Discuss.: 29 August 2016

Revised: 10 November 2016 – Accepted: 29 November 2016 – Published: 6 January 2017

**Abstract.** Lake Chala (3°19' S, 37°42' E) is a steep-sided crater lake situated in equatorial East Africa, a tropical semi-arid area with a bimodal rainfall pattern. Plants in this region are exposed to a prolonged dry season, and we investigated if (1) these plants show spatial variability and temporal shifts in their water source use; (2) seasonal differences in the isotopic composition of precipitation are reflected in xylem water; and (3) plant family, growth form, leaf phenology, habitat and season influence the xylem-to-leaf water deuterium enrichment. In this study, the  $\delta^2\text{H}$  and  $\delta^{18}\text{O}$  of precipitation, lake water, groundwater, plant xylem water and plant leaf water were measured across different plant species, seasons and plant habitats in the vicinity of Lake Chala. We found that plants rely mostly on water from the “short” rains falling from October to December (northeastern monsoon), as these recharge the soil after the long dry season. This plant-available, static water pool is only slightly replenished by the “long” rains falling from February to May (southeastern monsoon), in agreement with the “two water worlds” hypothesis, according to which plants rely on a static water pool while a mobile water pool recharges the groundwater. Spatial variability in water resource use exists in the study region, with plants at the lakeshore relying on a water source admixed with lake water. Leaf phenology does not affect water resource use. According to our results, plant species and their associated leaf phenology are the primary factors in-

fluencing the enrichment in deuterium from xylem water to leaf water ( $\varepsilon_{l/x}$ ), with deciduous species giving the highest enrichment, while growth form and season have negligible effects. Our observations have important implications for the interpretation of  $\delta^2\text{H}$  of plant leaf wax *n*-alkanes ( $\delta^2\text{H}_{\text{wax}}$ ) from paleohydrological records in tropical East Africa, given that the temporal variability in the isotopic composition of precipitation is not reflected in xylem water and that leaf water deuterium enrichment is a key factor in shaping  $\delta^2\text{H}_{\text{wax}}$ . The large interspecies variability in xylem–leaf enrichment ( $24 \pm 28\%$ ) is potentially troublesome, taking into account the likelihood of changes in species assemblage with climate shifts.

## 1 Introduction

The naturally occurring stable isotopes of hydrogen and oxygen in the water molecule have been highly instructive as tracers in hydrology and eco-hydrology. This is mainly based on naturally occurring variations in the relative abundance of two rare, heavy isotopes (i.e.,  $^2\text{H}$  or D and  $^{18}\text{O}$ ), arising from phase changes and mixing as water passes through the hydrologic cycle (Dansgaard, 1964; Gat, 1996). The hydrogen and oxygen isotopic composition of precipitation varies both spatially and temporally, due to fluctuations (i) at the site of

evaporation, e.g., in meteorological conditions such as relative humidity (RH), wind and sea surface temperature; and (ii) at the site of precipitation, e.g., in the degree of rainout of particular air masses (Craig, 1961; Dansgaard, 1964; Gat, 1996; Araguás-Araguás et al., 2000; Gibson et al., 2008). The stable isotopes of hydrogen and oxygen in precipitation show a distinct empirical relationship, described by the Global Meteoric Water Line (GMWL):  $\delta^2\text{H} = 8.1 * \delta^{18}\text{O} + 10.3\text{‰}$ ; Rozanski et al., 1993). The  $\delta^{18}\text{O}$ – $\delta^2\text{H}$  relationship in precipitation at any single location is however better described by a Local Meteoric Water Line (LMWL), which can have a different slope and intercept depending on the conditions in which the local water source was formed, and LMWLs can be used to compare different (sub)surface water bodies with local precipitation (Rozanski et al., 1993; Breitenbach et al., 2010).

Variation of  $\delta^2\text{H}$  or  $\delta^{18}\text{O}$  in xylem water of plants has been used extensively to determine water sources used by plants and their functional rooting depth (Zimmermann et al., 1967; Brooks et al., 2010). Evaporation directly from the soil causes an isotopic enrichment of soil water available for plant roots (Sachse et al., 2012, and references therein). Water uptake through the roots and transport in plants is generally considered to occur without fractionation (White et al., 1985; Dawson and Ehleringer, 1991, 1993; Zhao et al., 2016), so that the isotopic composition of xylem water represents the composition of the plant water source (Dawson and Ehleringer, 1991; Evaristo et al., 2015). Fractionation during root water uptake has been found for plants living under xeric conditions and in mangroves (Ellsworth and Williams, 2007), and recent research stated that fractionation likely occurs during the water redistribution after uptake (Zhao et al., 2016). In contrast, the isotopic composition of leaf water differs markedly from that of xylem water. This is because evaporation discriminates towards lighter isotopologues. As a result, the remaining leaf water after transpiration becomes more enriched in heavy isotopes. The degree of enrichment from xylem to leaf water is a function of temperature, RH and the isotopic composition of water vapor surrounding the plant (Kahmen et al., 2008; Sachse et al., 2012).

As  $\delta^2\text{H}$  values of leaf wax *n*-alkanes obtained from lake-surface sediments and soils showed tight correlations with  $\delta^2\text{H}$  values of precipitation (Sachse et al., 2004; Hou et al., 2008; Polissar and Freeman, 2010; Garcin et al., 2012), the  $\delta^2\text{H}$  signature of *n*-alkanes, long-chain hydrocarbons with 25–35 carbon atoms derived from fossil plant leaf waxes incorporated in lake sediments, is increasingly being used as a paleoclimate proxy (Eglinton and Hamilton, 1967; Mayer and Schwark, 1999; von Grafenstein et al., 1999; Thompson et al., 2003; Tierney et al., 2008; Costa et al., 2014). Consequently, a better understanding of the hydrogen fractionation is also needed, which occurs during its incorporation from precipitation via leaf water into plant leaf waxes. The present study is developed in the context of such an application of hydrogen isotope geochemistry for paleoclimate research, fo-

cus on the sediment record of Lake Chala (Verschuren et al., 2009; Barker et al., 2011; Tierney et al., 2011).

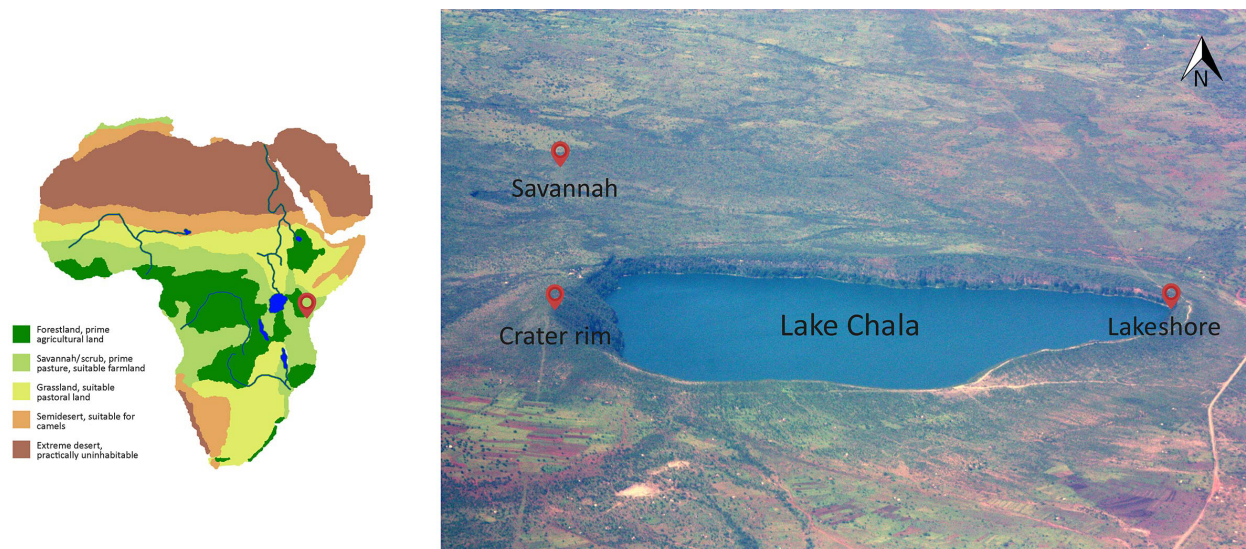
The study area is located in equatorial East Africa. In this semiarid tropical region, the biannual passage of the Intertropical Convergence Zone (ITCZ) induces a strongly bimodal pattern of seasonal rainfall (Nicholson, 2000). Plants in this region are exposed to a prolonged dry season between June and September, during which little precipitation falls ( $< 20 \text{ mm month}^{-1}$ ). Adaptations to survive this period of water shortage include stem succulence, leathery leaves and deep roots providing access to deep and permanent water sources (Elffers et al., 1964; Corbin et al., 2005). Meinzer et al. (1999) suggested that, at least in pristine dryland ecosystems, competition for water among species may actually be limited due to pronounced spatial and temporal partitioning of water resources resulting from maximized species diversity. Differential water resource utilization has been shown across different (Ehleringer et al., 1991; Jackson et al., 1999; Goldstein et al., 2008) and within similar growth forms (Field and Dawson, 1998; Meinzer et al., 1999; Stratton et al., 2000). It furthermore appears that the relationship between the root biomass in a particular soil layer and the degree of contribution of that soil layer to plant water uptake is not always straightforward (Jackson et al., 1995; Stahl et al., 2013). Therefore, analysis of the dual stable isotope composition of xylem water could be a valuable tool to elucidate the water sources effectively used by plants (Dawson and Ehleringer, 1991; Liu et al., 2010).

In this study, we measured the  $\delta^2\text{H}$  and  $\delta^{18}\text{O}$  content of precipitation, lake water, groundwater, and of xylem and leaf water in three individuals of each of the 14 different species from three distinct habitats around Lake Chala. Sampling was carried out during successive wet and dry seasons of 1 complete year. Our primary research questions were as follows: (1) are seasonal differences in the isotopic composition of precipitation reflected in xylem water? (2) do plants show habitat-specific variability and temporal shifts in their water source use? (3) what is the influence of plant family, growth form, phenology, season and habitat on the deuterium enrichment from xylem to leaf water? The work that we present here reports isotope data from a data-scarce region and is intended to provide a basis for the interpretation of leaf wax *n*-alkane  $\delta^2\text{H}$  values applied as (paleo)hydrological proxies.

## 2 Materials and methods

### 2.1 Study site

Lake Chala is a 4.2 km<sup>2</sup>, ~92 m deep crater lake with near-vertical inner crater walls (Moernaut et al., 2010), situated on the southeastern slope of Mt Kilimanjaro (3°19' S, 37°42' E) at 880 m above sea level (m a.s.l.) in equatorial East Africa (Fig. 1). The biannual passage of the Intertropical Convergence Zone (ITCZ) induces a bimodal rainfall pattern, with southeastern (SE) monsoon winds bringing “long rains” nor-



**Figure 1.** Lake Chala, situated in equatorial East Africa, on a continent-scale vegetation map (left) and with the different sampled habitats (right). Sampling sites in savannah, at the lakeshore and on the crater rim are indicated by red dots. Adapted from Wikimedia Commons (2010).

mally from March to mid-May and northeastern (NE) monsoon winds bringing “short rains” from late October to December (Nicholson, 2000; Fig. 2). The local climate is tropical semiarid, with lowest mean monthly night- and daytime temperatures in July–August (ca. 18 and 28 °C, respectively) and highest values in February–March (ca. 21 and 33 °C, respectively; Fig. 1a) for Voi, 80 km east of Lake Chala (Buckles et al., 2014). Given the total annual rainfall of ca. 565 mm and an estimated annual lake-surface evaporation of ca. 1735 mm (Payne, 1970), the water budget of Lake Chala must be balanced by substantial groundwater input, the main source of which is precipitation falling onto montane forests of Mt Kilimanjaro’s east-facing slope at 1800–2800 m a.s.l. (Hemp, 2006a).

The vegetation of the crater basin containing Lake Chala consists of different forest and woodland types (Hemp, 2006b). On the upper part of the inner slopes a dry forest occurs, with succulents such as *Euphorbia quinque-costata* (Euphorbiaceae) and deciduous species such as *Commiphora baluensis* (Burseraceae) and *Haplocoelum foliolosum* (Sapindaceae) dominating the tree layer. Near the lakeshore an evergreen forest with *Sorindeia madagascariensis* (Anacardiaceae), *Ficus sycomorus* (Moraceae) and *Trichilia emetica* (Meliaceae) grows. In contrast, the outer crater slopes are covered with dry savannah woodlands, with a lower and more open canopy. The stunted, fruit-tree-like appearance of the woody species, mainly Combretaceae, Burseraceae and Anacardiaceae, inspired the first botanists to describe this vegetation formation as “Obstgartensteppe” (“fruit tree garden steppe”; Volkens, 1897). Whereas all these vegetation types grow on rocky slopes with very shallow soils, the soils of the flat foothills are deeper. Here, most of

the former natural savannah vegetation is converted into agricultural fields or meadows. The savannah woodlands still existing in this area are dominated by acacias (*A. nilotica*, *A. senegal*; Mimosaceae).

## 2.2 Sampling

Two duplicate rain gauges were installed in the savannah just outside Chala crater (at 3°19′ S, 37°42′ E and 842 m a.s.l.; Fig. 1) to sample precipitation on a monthly basis between September 2013 and August 2014. The collectors consisted of a 5 L plastic container with a plastic funnel of ca. 15 cm diameter, in which a plastic fiber mesh net was placed to prevent dirt from entering the bottle. A layer of mineral oil (thickness ca. 1.5 cm) was poured in the jars to avoid evaporation and exchange with air moisture, which could alter isotopic composition of collected water (Friedman et al., 1992). As only six precipitation samples reached the laboratory, precipitation was additionally collected in the savannah about 20 km to the west of the Chala crater (at 3°23′ S, 37°27′ E and 820 m a.s.l.) by an evaporation-free collector (Groning et al., 2012) of the brand PALMEX (Croatia) on a monthly basis from November 2014 until November 2015. Lake water was sampled 30 cm below the water surface in the middle of the lake on a monthly basis from January 2013 until October 2014. A groundwater sample was obtained from the Mitaleni Spring (3°25′ S, 37°27′ E) in July 2015. We assumed that the isotopic composition of groundwater is seasonally stable, as the groundwater recharge occurs on a decadal scale in the region (Zuber, 1983).

Plant material was collected during the main dry season in September 2013 and July 2014, during the NE monsoon

**Table 1.** Studied plant species and family with their respective growth form, leaf phenology and habitat.

Species	Family	Growth form	Leaf phenology	Habitat
<i>Acacia gerrardii</i>	Leguminosae	Tree	Evergreen	Savannah
<i>Boswellia neglecta</i>	Burseraceae	Tree	Deciduous	Crater rim
<i>Ficus sycomorus</i>	Moraceae	Tree	Deciduous	Lakeshore
<i>Lepisanthes senegalensis</i>	Sapindaceae	Tree	Evergreen	Lakeshore
<i>Sideroxylon sp.</i>	Sapotaceae	Tree	Evergreen	Lakeshore
<i>Commiphora africana</i>	Burseraceae	Shrub	Deciduous	Crater rim
<i>Euphorbia tirucalli</i>	Euphorbiaceae	Shrub	Evergreen	Crater rim
<i>Grewia tephrodermis</i>	Tiliaceae	Shrub	Deciduous	Savannah, crater rim
<i>Maerua sp.</i>	Capparaceae	Shrub	Evergreen	Crater rim
<i>Thylachium africanum</i>	Capparaceae	Shrub	Evergreen	Lakeshore, crater rim
<i>Vepris uguenensis</i>	Rutaceae	Shrub	Evergreen	Savannah, crater rim
<i>Ximenia americana</i>	Oleaceae	Shrub	Evergreen	Savannah
<i>Enteropogon macrostachyus</i> *	Poaceae	Grass	Perennial	Savannah
<i>Themeda triandra</i> *	Poaceae	Grass	Perennial	Savannah, crater rim

\* The whole plant was sampled, which consisted mainly of green leaves and thus represented leaf water.

season in December 2013, during the short dry season in February 2014, and during the SE monsoon season in April 2014. However, because the 2014 long rainy season atypically started already in February, our plant sampling for the short dry season was already influenced by fresh SE monsoon rainfall. Fourteen plant species with varying growth forms (grass, shrub or tree) and leaf phenology (deciduous or evergreen, the latter including succulent) were collected in three distinct habitats (savannah, crater rim, lakeshore), representative of the region, around Lake Chala (Fig. 1, Table 1). Shrubs were defined as woody plants with multiple stems, while trees had one erect perennial stem. Lakeshore vegetation was sampled at the northeast side of the lake, savannah was sampled outside the crater ca. 500 m to the northwest, and crater-rim vegetation at the top of the crater's western rim (1100 m a.s.l.). The locally most abundant plant species within each habitat were chosen with the aid of an experienced local guide, although the choice of species was sometimes restricted by practical limitations such as difficulties in reaching certain locations. For each habitat, three individuals of each species were sampled.

Two different sampling techniques were used to collect xylem water from plants, the choice of which depended on the plant type. When the plant had a trunk with a diameter of more than 10 cm, a core drill sample (300 mm, diameter 4.30 mm, hardwood head; Pressler, Recklinghausen, Germany) was extracted, from which the outer layer (epidermis, cortex, bark fibres and phloem) was removed to prevent contamination with phloem sap. In the case of smaller trees and shrubs, a piece of twig was sampled, the outer layer was scraped off using a knife, and it was enclosed in sealed vials. For leaf water analysis, leaves were taken from each plant and placed in vials. If twigs were sampled, leaves on those twigs were sampled. In the case of core sampling, leaves were sampled randomly at different heights and at the four

cardinal points and merged to one bulk sample per replicate to provide samples that were representative of the entire plant. Entire leaves were collected in order to ensure the integration of the signal from the entire leaf, given likely isotopic gradients along the length of the leaf (Helliker and Ehleringer, 2000; Sessions, 2006). Leaves were sampled between 10:00 and 15:00 UTC + 3 to eliminate additional variability induced by previously reported large diurnal variations in the isotopic composition of leaves (Cernusak et al., 2002; Li et al., 2006; Kahmen et al., 2008). From grasses, only leaves were sampled. The whole plant was sampled which consisted mainly of green leaves and thus represented leaf water. Stem, twig and leaf samples were stored frozen until the water was quantitatively extracted via cryogenic vacuum distillation (West et al., 2006). Following Araguás-Araguás et al. (1995), isotopic data were retained for interpretation only if the extraction efficiency, determined by further drying of the sample at 105 °C for at least 48 h, exceeded 98 %. A variety of water extraction methods for the analysis of the stable isotope water exist. Cryogenic vacuum extraction of soil pore water remains a challenge but is an effective method for plant water extractions (Orlowski et al., 2016).

### 2.3 Analysis

The  $\delta^2\text{H}$  and  $\delta^{18}\text{O}$  values of water samples were determined using cavity ringdown spectrometry (WS-CRDS, L2120-i, Picarro, USA), coupled with a vaporizing module (A0211 high-precision vaporizer) and a micro-combustion module, which eliminates the interference of organic compounds (Martín-Gómez et al., 2015). Each sample was measured 10 times, of which the first 5 injections were eliminated in order to overcome memory effects. The measurement uncertainty ( $\pm 1\sigma$ ) of our CRDS was 0.1 and 0.4‰ for  $\delta^{18}\text{O}$  and  $\delta^2\text{H}$ , respectively.  $\delta$  isotopic composition is expressed in terms

of  $^2\text{H}/^1\text{H}$  and  $^{18}\text{O}/^{16}\text{O}$  ratios, represented by  $\delta$  values:  $\delta_{\text{sample}} = (R_{\text{sample}}/R_{\text{standard}} - 1)$  with  $R_{\text{sample}}$  and  $R_{\text{standard}}$  being the isotopic ratio ( $^2\text{H}/^1\text{H}$  or  $^{18}\text{O}/^{16}\text{O}$ ) measured in the sample and the standard, respectively (Gat, 2005). The reference standard used is Vienna Standard Mean Ocean Water (VSMOW), which, by definition, has  $\delta^2\text{H}$  and  $\delta^{18}\text{O}$  concentrations of 0‰.

The enrichment factor  $\varepsilon_{\text{IX}}$  characterizes the hydrogen-isotopic fractionation between xylem and leaf water and is defined as (Eq. 1)

$$\varepsilon_{\text{IX}} = \left( (\delta^2\text{H}_{\text{leaf}} + 1) / (\delta^2\text{H}_{\text{xylem}} + 1) \right) - 1. \quad (1)$$

Enrichment factors and  $\delta$  values are typically reported in per mil (‰) (Cohen et al., 2007). Both the  $\delta^2\text{H}$  and  $\delta^{18}\text{O}$  values of water samples were measured, but particular focus was given to the  $\delta^2\text{H}$  values as this research is intended to provide a basis for the interpretation of leaf wax *n*-alkane  $\delta^2\text{H}$  values as (paleo)hydrological proxies.

The average isotopic signature of the source of xylem water was determined from the intersection of xylem water samples (aligned along a local evaporation line, LEL) with the LMWL (Eqs. 2 and 3):

$$\delta^{18}\text{O}_{\text{LMWL-int}} = \frac{\delta^2\text{H} - \text{slope}_{\text{LEL}} * \delta^{18}\text{O} - \text{intercept}_{\text{LMWL}}}{\text{slope}_{\text{LMWL}} - \text{slope}_{\text{LEL}}} \quad (2)$$

$$\delta^2\text{H}_{\text{LMWL-int}} = \delta^{18}\text{O}_{\text{LMWL-int}} * \text{slope}_{\text{LMWL}} + \text{intercept}_{\text{LMWL}}. \quad (3)$$

The isotopic signatures of xylem water were further characterized with a parameter describing the relative degree of evaporation. We developed the evaporation distance, defined as ED and calculated as the distance from the LMWL along an evaporation line, scaled to the  $\delta^2\text{H}$  axis (Eq. 4). The higher this ED value, the further away from the LMWL and the more evaporated the water will be, i.e., the concentration of heavy isotopes will be higher.

Evaporation distance (ED)

$$= \sqrt{(\delta^2\text{H} - \delta^2\text{H}_{\text{LMWL-int}})^2 + \text{slope}_{\text{LMWL}} * (\delta^{18}\text{O} - \delta^{18}\text{O}_{\text{LMWL-int}})^2} \quad (4)$$

Analyses of variance (ANOVA) were used for comparisons of  $\delta^2\text{H}$  and  $\delta^{18}\text{O}$  isotopic signatures among plant species, growth forms, leaf phenologies, seasons and habitats. Tukey post hoc comparisons were used to further examine differences. All statistical analyses were performed using R (version 3.2.3.). Slopes and intercepts of LMWL and LEL were estimated with linear regressions. A discussion of the different slopes and intercepts is not within the scope of this paper, but they were used to calculate  $\delta^2\text{H}_{\text{LMWL-int}}$ .

## 3 Results

### 3.1 Isotopic composition of precipitation, lake water and groundwater

During our main sampling period from September 2013 until August 2014, local rainfall was highest in December (peak

NE monsoon rains) and April (peak SE monsoon rains) with 135 and 122 mm, respectively, and lowest in January (short dry season) and August (long dry season) with two instances of 1 mm of rain (Fig. 2b). During the 12-month monitoring period, the total amount of local precipitation was 692 mm. The monthly average temperature varied between 23.9 °C in June–July and 27.1 °C in April, resulting in an overall annual mean of  $25.5 \pm 1.2$  °C (mean  $\pm 1\sigma$  standard deviation). The monthly minimum (nighttime) temperature followed a similar pattern ( $19.6 \pm 1.0$  °C), while the monthly maximum (daytime) temperature showed greater variability ( $37.5 \pm 2.1$  °C), with an atypical minimum in February (34.8 °C) and a maximum in April (41.2 °C).

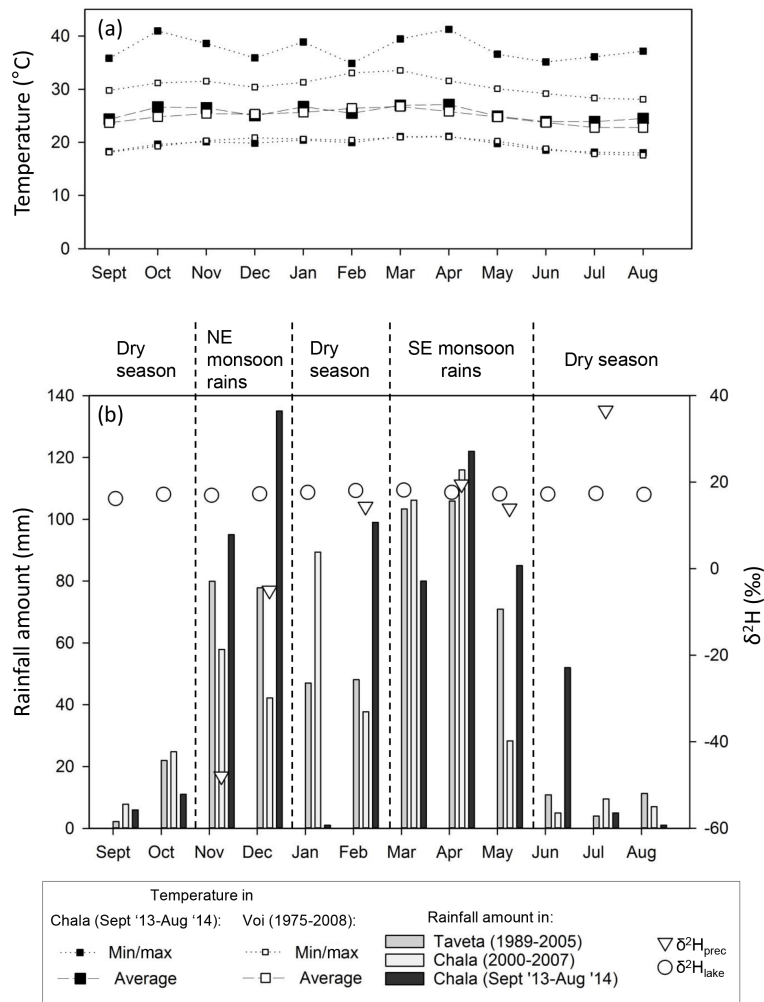
The isotopic composition of precipitation is most enriched during the dry month of July, with values of 36.6 for  $\delta^2\text{H}_{\text{prec}}$  and 4.2‰ for  $\delta^{18}\text{O}_{\text{prec}}$ , and most depleted during rainy November, with values of  $-47.9$  and  $-7.2$ ‰ (Fig. 2), respectively. Comparing the two rainy seasons revealed considerable differences ( $p = 0.08$ ), with more enriched rain during the SE monsoon ( $\delta^2\text{H}_{\text{prec}}$  of  $16.0 \pm 2.5$ ‰ and  $\delta^{18}\text{O}_{\text{prec}}$  of  $0.8 \pm 0.7$ ‰;  $n = 3$ ) compared to the NE monsoon ( $\delta^2\text{H}_{\text{prec}}$  of  $-26.5 \pm 21.5$ ‰ and  $\delta^{18}\text{O}_{\text{prec}}$  of  $-4.9 \pm 2.3$ ‰;  $n = 2$ ). In order to draw an LMWL, precipitation samples ( $n = 12$ ) covering the period November 2014–November 2015 were added (from a savannah site 20 km west of Lake Chala, cf. above). Based on this dataset ( $n = 12$ ), the yearly volume-weighted average values are  $-6.5$ ‰ for  $\delta^2\text{H}_{\text{prec}}$  and  $-2.5$ ‰ for  $\delta^{18}\text{O}_{\text{prec}}$ . Compared to the global meteoric water line ( $\delta^2\text{H} = 8.1 * \delta^{18}\text{O} + 10.3$ ‰; Rozanski et al., 1993) and the LMWL of central Kenya ( $\delta^2\text{H} = 8.3 * \delta^{18}\text{O} + 11.0$ ‰; Soderberg et al., 2013), the LMWL of the study region ( $\delta^2\text{H} = 7.1 * \delta^{18}\text{O} + 10.7$ ‰;  $n = 18$ ) has a slightly lower slope and intermediate intercept (Fig. 3).

The isotopic measurements on lake water during 22 consecutive months (from January 2013 until October 2014) yielded mean  $\delta^2\text{H}_{\text{lake}}$  and  $\delta^{18}\text{O}_{\text{lake}}$  values of  $17.4 \pm 0.7$ ‰ and  $2.9 \pm 0.2$ ‰, respectively (Figs. 2 and 3), with very little variation through the year but highest values in the warm months of February–March and a modest minimum around August. The groundwater isotopic composition equaled  $-20.2$ ‰ for  $\delta^2\text{H}$  and  $-4.6$ ‰ for  $\delta^{18}\text{O}$  in July 2015 (Fig. 3).

### 3.2 Xylem water

The  $\delta^2\text{H}$  of xylem water ( $\delta^2\text{H}_{\text{xylem}}$ ) in a total of 154 analyzed samples (no grasses) ranged between  $-87$  and  $25$ ‰ (Fig. 3), with an overall mean value of  $-18 \pm 17$ ‰.  $\delta^2\text{H}_{\text{xylem}}$  varied between plants at the lakeshore ( $-2 \pm 10$ ‰;  $n = 48$ ) and isotopically more depleted plants in the savannah ( $-25 \pm 12$ ‰;  $p < 0.01$ ;  $n = 34$ ) and on the crater rim ( $-26 \pm 15$ ‰;  $p < 0.001$ ;  $n = 72$ ). The  $\delta^2\text{H}_{\text{xylem}}$  of trees (three species;  $n = 38$ ) at the lakeshore ( $1 \pm 8$ ‰) was significantly higher than that of the single shrub species sampled in this habitat ( $-13 \pm 5$ ‰;  $p < 0.001$ ;  $n = 10$ ). In the savannah and on the crater rim, no difference ( $p > 0.05$ ) could be ob-



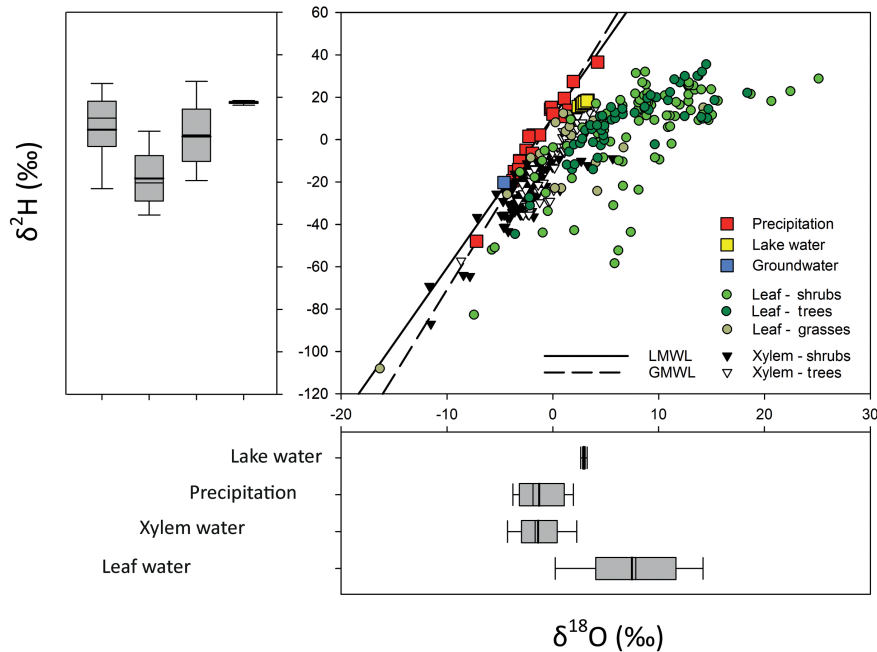


**Figure 2.** (a) At Lake Chala, the monthly average temperature varied slightly between 23.9 °C in June–July and 27.1 °C in April. The minimum and maximum temperatures for both the study area and nearby Voi (Kenya) are shown. (b) Monthly rainfall distribution from September 2013 to August 2014, with the isotopic composition of precipitation and lake water ( $\delta^2\text{H}_{\text{prec}}$  and  $\delta^2\text{H}_{\text{lake}}$ ). The total amount of rainfall during the study period (692 mm) was slightly above reported values for the long-term mean annual precipitation in the Chala region. Note that the 2014 long rainy season atypically already started in February and ceased in June.

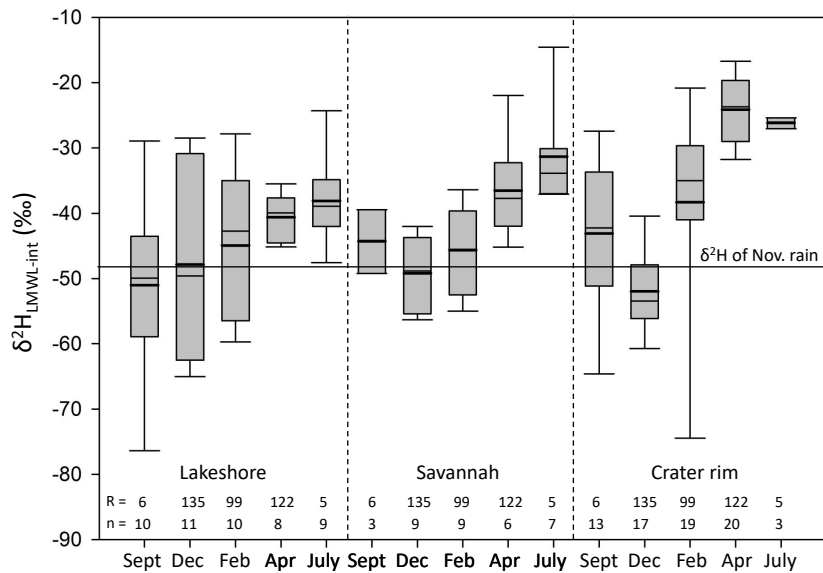
served between the  $\delta^2\text{H}_{\text{xylem}}$  of trees and shrubs. Across all sampled plants, leaf phenology (deciduous or evergreen) did not significantly influence  $\delta^2\text{H}_{\text{xylem}}$  value ( $p > 0.05$ ). Only two of the sampled species showed seasonality in  $\delta^2\text{H}_{\text{xylem}}$ , but in a dissimilar pattern. The tree species *Sideroxylon* sp. had lower  $\delta^2\text{H}_{\text{xylem}}$  values during the long dry season ( $0 \pm 5\text{‰}$ ;  $p < 0.05$ ) than during the short ( $10 \pm 1\text{‰}$ ) and long rainy seasons ( $6 \pm 8\text{‰}$ ). The tree species *Ficus sycomorus* showed lower values ( $p < 0.01$ ) during the short rainy season ( $-5 \pm 2\text{‰}$ ) than during the long dry season ( $4 \pm 3\text{‰}$ ) and long rainy season ( $13 \pm 4\text{‰}$ ).

The hydrogen isotopic signatures of xylem samples follow an evaporation line (LEL). To determine the mean isotopic composition of the water source from which xylem water originated, LELs were calculated for each of the three different plant habitats and used to estimate (Eqs. 2 and 3)

the intersection points of xylem water with the LMWL ( $\delta^2\text{H}_{\text{LMWL-int}}$ ). LELs with a slope of about 3 fitted best with our data from savannah and the crater rim, while a slope of about 5 fitted best at the lakeshore. The LELs with slope of 3 correspond well with the modeled evaporation lines for soil water in our study area (Gibson et al. 2008). A slope of 5 corresponds more with Gibson et al.'s (2008) modeled evaporation lines for surface water, which can be explained by the lakeshore trees and shrubs mostly using lake water. The  $\delta^2\text{H}_{\text{LMWL-int}}$  values ranged between  $-79$  and  $-13\text{‰}$ , with an overall mean value of  $-41 \pm 13\text{‰}$ . No statistical differences ( $p > 0.05$ ) could be observed among  $\delta^2\text{H}_{\text{LMWL-int}}$  values analyzed by habitat, species, growth form or leaf phenology (Fig. S1 in the Supplement). Plants at the lakeshore showed only a weak temporal trend in  $\delta^2\text{H}_{\text{LMWL-int}}$  (mean  $-45 \pm 12\text{‰}$ ;  $p > 0.05$ ),



**Figure 3.** Xylem and leaf water  $\delta^2\text{H}$  and  $\delta^{18}\text{O}$  values of all plant species, seasons and plant habitats in the vicinity of Lake Chala, and lake, precipitation and groundwater against the LMWL ( $\delta^2\text{H} = 7.12 \cdot \delta^{18}\text{O} + 10.69\text{‰}$ , black line). The box plots show the mean (bold line), minimum, first quartile, median, third quartile and maximum for the isotopic composition of leaf water, xylem water, precipitation and lake water. LMWL: local meteoric water line; GMWL: global meteoric water line ( $\delta^2\text{H} = 8.1 \cdot \delta^{18}\text{O} + 10.3\text{‰}$ ; Rozanski et al., 1993).

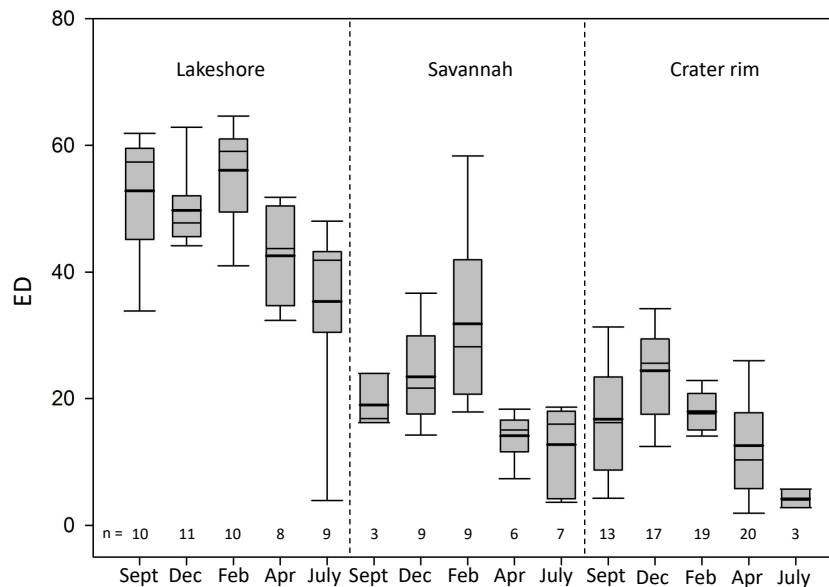


**Figure 4.** The average isotopic signature of the source of xylem water ( $\delta^2\text{H}_{\text{LMWL-int}}$ ), determined from the intersection of xylem water samples with the LMWL, among habitats and seasons. Nov.: November;  $n$ : amount of samples;  $R$ : rainfall amount (mm).

whereas plants in both the savannah ( $-42 \pm 9\text{‰}$ ;  $p < 0.01$ ) and on the crater rim ( $-38 \pm 15\text{‰}$ ;  $p < 0.001$ ) showed significant seasonal variability in  $\delta^2\text{H}_{\text{LMWL-int}}$  (Fig. 4).

The ED (Eq. 4) is a parameter describing the relative degree of evaporation of a xylem water sample. It is derived

by calculating the distance of xylem data points from the LMWL along the LEL. The higher this ED value, the further away from the LMWL and the more evaporated the water will be. A great range in ED values was observed, varying between 1 and 94% across all samples (Fig. 5). Plants



**Figure 5.** The evaporation distance (ED) of xylem samples, describing the relative degree of evaporation by calculating the distance from the LMWL along an evaporation line, among habitats and seasons. *n*: amount of samples.

at the lakeshore produced systematically higher ED values ( $49 \pm 13\%$ ) than those in savannah ( $23 \pm 14\%$ ;  $p < 0.001$ ) or on the crater rim ( $17 \pm 9\%$ ;  $p < 0.001$ ). Growth form also influenced ED ( $p < 0.05$ ), with lower values for shrubs than for trees both at the lakeshore (respectively,  $42 \pm 16$  and  $50 \pm 12\%$ ) and on the crater rim (respectively,  $16 \pm 9$  and  $22 \pm 8\%$ ; Fig. S2). No difference ( $p > 0.05$ ) in ED value was found between evergreen and deciduous plants. The evaporation distance showed a clear temporal effect during the study period at the lakeshore ( $p < 0.01$ ) and on the crater rim ( $p < 0.01$ ), but in the savannah the trend was not significant ( $p > 0.05$ ; Fig. 5). Among the seven non-grass plant species sampled at the crater rim, a significant difference ( $p < 0.01$ ) was observed between the low ED value for *Vepris uguenensis* ( $9 \pm 7\%$ ) and the high ED value for *Euphorbia tirucalli* ( $25 \pm 7\%$ ).

### 3.3 Leaf water

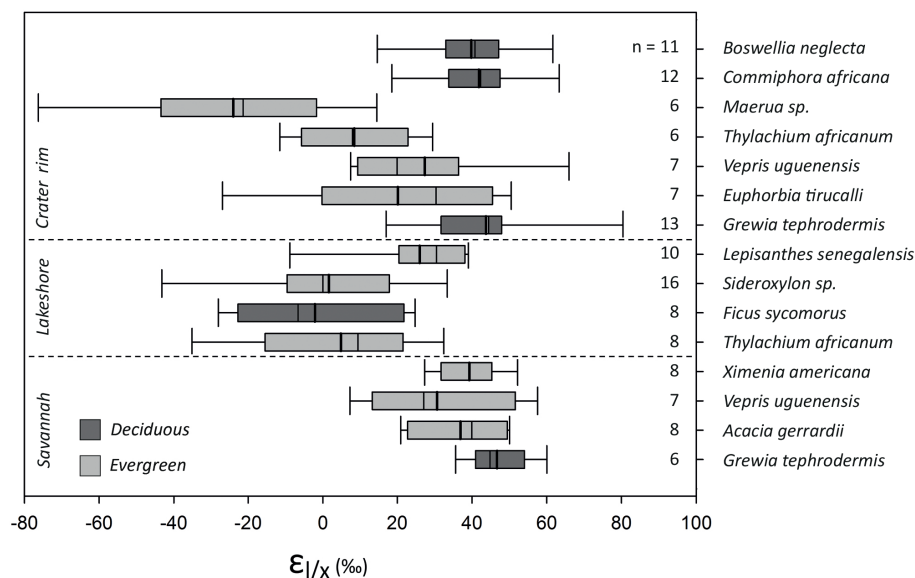
The number of samples investigated for leaf water  $\delta^2\text{H}$  ( $\delta^2\text{H}_{\text{leaf}}$ ) totaled 186, including the two species of grasses. Across this complete dataset,  $\delta^2\text{H}_{\text{leaf}}$  ranged from  $-83$  to  $37\%$ , with an overall mean value of  $5 \pm 20\%$  (Fig. 3). The  $\delta^2\text{H}_{\text{leaf}}$  of grasses (mean  $-2 \pm 14\%$ ;  $n = 18$ ) were less enriched than those of trees ( $10 \pm 16\%$ ;  $p < 0.01$ ;  $n = 63$ ), while those of shrubs were intermediate ( $3 \pm 22\%$ ;  $p = 105$ ). Leaf phenology had a significant effect ( $p < 0.001$ ) on the  $\delta^2\text{H}_{\text{leaf}}$  of shrubs with values of  $16 \pm 7$  and  $-4 \pm 24\%$  for deciduous ( $n = 38$ ) and evergreen ( $n = 67$ ) shrubs, respectively. The two evergreen shrubs of the Capparaceae family, in particular, showed strongly depleted  $\delta^2\text{H}_{\text{leaf}}$  values:  $-11 \pm 19\%$  for *Thylachium africanum* and

$-57 \pm 14\%$  for *Maerua* sp. Even if these outliers are removed from the group of evergreen shrubs, the difference in  $\delta^2\text{H}_{\text{leaf}}$  between deciduous and evergreen remains significant ( $p < 0.05$ ). No such difference ( $p > 0.05$ ) was observed between the  $\delta^2\text{H}_{\text{leaf}}$  of deciduous ( $n = 23$ ) and evergreen ( $n = 40$ ) trees. At the lakeshore, trees showed higher  $\delta^2\text{H}_{\text{leaf}}$  values ( $9 \pm 20\%$ ;  $n = 38$ ) than shrubs ( $-6 \pm 20\%$ ;  $p < 0.05$ ;  $n = 12$ ). Shrubs in the savannah had higher  $\delta^2\text{H}_{\text{leaf}}$  values ( $13 \pm 13\%$ ;  $n = 31$ ) than those on the crater rim ( $0 \pm 25\%$ ;  $p < 0.05$ ;  $n = 62$ ) and at the lakeshore ( $-6 \pm 20\%$ ;  $p < 0.05$ ;  $n = 12$ ), while  $\delta^2\text{H}_{\text{leaf}}$  values of shrubs at the lakeshore and on the crater rim did not differ significantly ( $p > 0.05$ ). Only the shrub *Vepris uguenensis* (in both habitats) and the trees *Sideroxylon* sp. and *Lepisanthes senegalensis* (only lakeshore habitat) showed an effect of seasonality on  $\delta^2\text{H}_{\text{leaf}}$ . *V. uguenensis* showed depleted  $\delta^2\text{H}_{\text{leaf}}$  values during the dry season ( $-11 \pm 16\%$ ) vs. enriched values during both rainy seasons ( $7 \pm 11\%$ ), whereas *Sideroxylon* sp. and *L. senegalensis* showed depleted  $\delta^2\text{H}_{\text{leaf}}$  during the long rainy season ( $-10 \pm 20$  and  $-6 \pm 11\%$ , respectively) and enriched  $\delta^2\text{H}_{\text{leaf}}$  during the short rainy season ( $27 \pm 3$  and  $33 \pm 3\%$ , respectively).

### 3.4 Factor of deuterium enrichment from xylem to leaf water ( $\epsilon_{\text{lx}}$ )

The enrichment factor  $\epsilon_{\text{lx}}$  of deuterium fractionation between xylem and leaf water could be determined on a total of 133 pairs of  $\delta^2\text{H}_{\text{xylem}}$  and  $\delta^2\text{H}_{\text{leaf}}$  values. This yielded an average  $\epsilon_{\text{lx}}$  for  $\delta^2\text{H}$  of  $24 \pm 28\%$  across all habitats, plant species (trees and shrubs only) and seasons (Fig. 6); the  $\epsilon_{\text{lx}}$  for  $\delta^{18}\text{O}$  is not reported here but showed the same trends.





**Figure 6.**  $\delta^2\text{H}$  enrichment factor  $\epsilon_{1/x}$ , characterizing the hydrogen-isotopic fractionation between xylem and leaf water, among habitat and leaf phenology. Deciduous plants gave higher  $\epsilon_{1/x}$  than evergreens. Note that *Grewia tephrodermis*, *Vepris uguenensis* and *Thylachium africanum* showed similar  $\epsilon_{1/x}$  independent of sample habitat.  $n$ : amount of samples.

The enrichment factor showed a significant difference between plants at the lakeshore ( $7 \pm 23\%$ ;  $p < 0.001$ ;  $n = 42$ ) and the savannah ( $36 \pm 19\%$ ;  $p < 0.001$ ;  $n = 29$ ) and crater-rim plants ( $30 \pm 30\%$ ;  $n = 62$ ). Growth form had no significant effect ( $p > 0.05$ ) on  $\epsilon_{1/x}$ , with values of  $27 \pm 29\%$  for shrubs ( $n = 80$ ) and  $19 \pm 25\%$  for trees ( $n = 53$ ). Significant differences ( $p < 0.001$ ) were found between species according to their leaf phenology with  $\epsilon_{1/x}$  values of  $37 \pm 25\%$  for deciduous plants ( $n = 50$ ) and  $16 \pm 27\%$  for evergreens ( $n = 83$ ). An effect of seasonality was limited and could only be observed in *Sideroxylon sp.* ( $p < 0.05$ ) and *Lepisanthes senegalensis* ( $p < 0.01$ ), reflecting the trends in  $\delta^2\text{H}_{\text{leaf}}$ .

## 4 Discussion

### 4.1 Water sources: isotopic composition of precipitation, groundwater and lake water

Equatorial East Africa has a pronounced bimodal seasonality in rainfall, characterized by (long) SE monsoon rains from March until May and (short) NE monsoon rains from late October until December separated by a long dry season (Nicholson, 2000). During November–December of 2013, when Indian Ocean moisture was advected by NE monsoon winds,  $\delta^2\text{H}_{\text{prec}}$  and  $\delta^{18}\text{O}_{\text{prec}}$  were more depleted than during February through May 2014, when Indian Ocean moisture was advected by SE monsoon winds (Fig. 2). This result stresses the importance of the air mass trajectory in controlling seasonal patterns of rainwater isotopic signatures. For the location of Lake Chala, moist air advected by the NE monsoon has traveled a longer distance overland compared to moist air ad-

ducted by the SE monsoon. However, within the short rainy season, we recorded a considerable difference between the very strongly depleted  $\delta^2\text{H}_{\text{prec}}$  value for November precipitation ( $-48\%$ ), representing the first rains after the dry season, and the only modestly depleted  $\delta^2\text{H}_{\text{prec}}$  value for December ( $-5\%$ ). This indicates that not only the general air mass trajectory but also other phenomena such as different degrees of rainout contributing to the formation of precipitation or temperature and relative humidity control of the initial vapor (Dansgaard, 1964) play an important role in determining the isotopic composition of monthly precipitation in any particular year. The total amount of rainfall during the study period (692 mm) was slightly above reported values for the long-term mean annual precipitation in the Chala region, which vary between 583 mm for Taveta 1989–2005 and 532 mm for Chala 2000–2007 (Fig. 2) and  $\sim 650$  mm for the Chala region (Hemp, 2006b). According to the Kenya Food Security Steering Group (2014), the 2013 rainy season started in mid-November instead of late October and was thus delayed by 2–3 weeks. Additionally, it already ceased in mid-December, 1 week earlier than normal. Rainfall amounts in both November and December were well above average. In addition, the 2014 long rainy season started earlier and ceased later than normal, with monthly rainfall amounts for February and June more than double those of an average year (Fig. 2). On the other hand, the month of January 2014 was exceptionally dry, and the main dry season from July to September was drier than usual (Fig. 2). The Hybrid Single Particle Lagrangian Integrated Trajectory (HYSPPLIT) model (Draxler and Hess, 2004), developed by NOAA, confirmed that there is a distinctly different trajectory for precipitation in November and

December (northeast) and April, May and July (southeast). To compute air parcel trajectories, the model required data from the NOAA meteorological database, and trajectories were modeled 310 h backwards in time starting from the end of the respective month. The  $\delta^2\text{H}_{\text{prec}}$  and  $\delta^{18}\text{O}_{\text{prec}}$  in the dry month of July were clearly more enriched than the corresponding values for both wet periods (Fig. 2). This result illustrates the “amount effect” (Dansgaard, 1964), which states that tropical regions characterized by limited temperature variation but strong seasonality in rainfall show a stronger depletion of the heavy isotopes of water at higher precipitation rates.

The isotopic composition of the groundwater sampled at Miwaleni Spring in July 2015 ( $-4.6\text{‰}$  for  $\delta^{18}\text{O}$  and  $-20.2\text{‰}$  for  $\delta^2\text{H}$ ) is consistent with data of McKenzie et al. (2011) for several groundwater wells around Mt Kilimanjaro measured in 2006.

Monthly isotopic measurements of lake-surface water revealed very little seasonal variation in  $\delta^{18}\text{O}_{\text{lake}}$  and  $\delta^2\text{H}_{\text{lake}}$  (Fig. 2 and 3). Our mean  $\delta^2\text{H}_{\text{lake}}$  and  $\delta^{18}\text{O}_{\text{lake}}$  values (17.4 and 2.9‰, respectively) during 2013–2014 are very similar to those measured by McKenzie et al. (2010) in January 2006 (19.5 and 2.3‰), indicating that the isotopic signature of Lake Chala surface water is also stable on an inter-annual to decadal timescale. We did observe a small seasonal trend in both  $\delta^{18}\text{O}_{\text{lake}}$  and  $\delta^2\text{H}_{\text{lake}}$  with lowest (least enriched) values around August. This is counterintuitive, as evaporative enrichment is expected to be more pronounced during the dry season. Although detailed assessment of this seasonal trend is outside the scope of the present study, we offer two possible explanations. First, seasonal deep circulation of the lake’s water column during the cool and windy main dry season (June–September; Wolff et al., 2014) may mix the evaporating (and thus isotopically enriched) surface water with isotopically more depleted deeper water, resulting in slight depletion of the surface water. Alternatively, dry-season evaporation may be compensated for by enhanced inflow of sub-surface water carrying the isotopic signature of the precipitation which fell on the forested slopes of Mt Kilimanjaro during the previous rainy season (Barker et al., 2011). Whatever the cause of the modest seasonal trend in lake-water  $\delta^2\text{H}_{\text{lake}}$ , plants using significant amounts of lake water can be expected to show a similarly small seasonality in the isotopic signature of xylem water,  $\delta^2\text{H}_{\text{xylem}}$ , when compared to, e.g., the seasonality of plants using temporarily more variable surface water.

#### 4.2 Xylem water: spatial and seasonal partitioning of plants’ water sources

The average isotopic composition of plants’ source water is reflected in the intersection points of individual xylem samples’ LELs with the LMWL. Plants that rely mostly on water from isotopically depleted NE monsoon rains will exhibit relatively low  $\delta^2\text{H}_{\text{LMWL-int}}$  values, while the opposite is true

for plants relying on water from the isotopically less depleted SE monsoon rains. The distance of individual  $\delta^2\text{H}_{\text{xylem}}$  values from the LMWL along their LEL is proportional to the relative degree of evaporation before uptake by the plant. The higher this parameter ED, the greater the relative importance of topsoil water (which is prone to evaporation) compared to deeper soil water. In a study region experiencing a Mediterranean climate with wet winters and dry summers, Brooks et al. (2010) found increasingly depleted  $\delta^{18}\text{O}$  and  $\delta^2\text{H}$  values with increasing soil depth and argued that the first and isotopically depleted autumn rains recharged the deep and withered soil, whereas water in shallow soil contains water from later, more enriched precipitation. We did not measure the isotopic composition of water along a soil profile, but in this study the first rains after the main dry season are also isotopically the most depleted. Access of plants to groundwater will similarly result in isotopically depleted xylem water because this water is mainly derived from precipitation on the forests of Mt Kilimanjaro at 1800–2800 m a.s.l. (Payne, 1970; Hemp, 2006a). The distribution of precipitation on Mt Kilimanjaro changes with elevation, with mean annual precipitation (MAP) increasing with altitude along the southern slope to reach a maximum of  $\sim 2700\text{ mm yr}^{-1}$  at 2200 m a.s.l. and decreasing rapidly further uphill (Hemp, 2001). Maximum groundwater recharge was found at an altitude of  $\sim 2000\text{ m}$ , where precipitation is depleted isotopically compared to Lake Chala due to the altitude effect (Dansgaard, 1964).

Whether plants in the Lake Chala area are deciduous or evergreen produced no systematic trends in  $\delta^2\text{H}_{\text{LMWL-int}}$  and evaporation distance (Figs. S1–S2) at any of the three principal plant habitats. We expected that evergreen plants would be adapted to tap water from deep sources (i.e., isotopically depleted water), allowing them to survive the long dry season, as observed, e.g., by Jackson et al. (1995) in a tropical moist lowland forest in Panama. However, in line with our results in a tropical dry lowland, Stratton et al. (2000) also failed to find a clear difference in  $\delta^2\text{H}_{\text{xylem}}$  between deciduous and evergreen plants.

At the lakeshore and on the crater rim, the evaporation distance of trees was higher than that of shrubs (Fig. S2), indicating that trees use more topsoil water enriched in heavy isotopes by evaporation. In contrast, in the savannah no such difference between the two growth forms was found. It is generally accepted that the deeper root systems of trees compared to shrubs allow them to access deeper soil water or groundwater (Dawson, 1996). However, Meinzer et al. (1999) found that smaller trees use deeper sources of water than larger trees, and attributed this to three possible factors. Firstly, large trees require large amounts of nutrients to maintain their extensive crown leaf area, and the nutrient content of topsoil water is much greater than that of water taken from greater depth. Secondly, and likely related to the first factor, large trees have a relatively more extensive horizontal root system, in order to compensate for the reduced water content

of the topsoil. Finally, the larger stem water storage capacity of large trees reduces peak daytime demands for soil water uptake and delays the onset of diurnal leaf water deficits. Goldsmith et al. (2011) agreed that soil nutrient availability can be a strong growth-limiting factor and therefore a driver of root distributions but observed that plant species occurring in either the understory or canopy of mature and secondary forests used a similarly shallow water source. In our study, the evaporation distances of plants (both trees and shrubs) at the lakeshore were strikingly higher than that of plants growing in the savannah and on the crater rim (Fig. 5). This was because lake-shore plants use a substantial fraction of lake water, which has relatively enriched  $\delta^2\text{H}_{\text{lake}}$  values. The higher  $\delta^2\text{H}_{\text{xylem}}$  and evaporation distance of lake-shore trees compared to lake-shore shrubs indicate that the former rely more heavily on lake water, while the latter tap more soil water (i.e., a smaller fraction of lake water).

Plants in all three local habitats showed similar, very negative  $\delta^2\text{H}_{\text{LMWL-int}}$  values, indicating that they relied mostly on depleted NE monsoon rains falling between October and December (Fig. 2). In all three habitats the  $\delta^2\text{H}_{\text{LMWL-int}}$  of plants sampled in December approached the  $\delta^2\text{H}_{\text{prec}}$  of November rain ( $-48\%$ ; Fig. 4). Probably, this is because these rains represent the onset of the short rainy season following a distinct 4-month long dry season. They are thus expected to recharge soils to a relatively large degree. This is again in accordance with the “two water worlds” (TWW) hypothesis of Brooks et al. (2010). This hypothesis challenges the assumption of water being completely mixed in soils and states that the mobile water compartment eventually enters the streams through translatory flow, while the static water compartment consists of initial precipitation that is trapped in soil micropores and remains trapped until the water is used through transpiration by plants in the following dry months (Brooks et al., 2010). Plants at the lakeshore predictably showed only a weak (statistically insignificant) seasonal trend in  $\delta^2\text{H}_{\text{LMWL-int}}$  (Fig. 4). From observations it was obvious that the shore was the wettest of all three local habitats, and plants stayed verdantly green in the dry season as there was plenty of water available. Plants on the crater rim and in the savannah showed lowest  $\delta^2\text{H}_{\text{LMWL-int}}$  values during December, which then increased during the following months to reach their highest recorded values during the dry season in July. This indicates that the plants’ water pool was replenished stepwise by the isotopically more enriched precipitation that followed from December onwards. At the top of the crater rim there was greater variability in monthly mean  $\delta^2\text{H}_{\text{LMWL-int}}$ , and the compound seasonal trend was more pronounced than in the savannah. Probably, this is because the rim is the driest location, with shallow soils on bedrock, while the savannah site at the foot of the crater has deeper soils. Shallow soils have a smaller pool of micropores that can trap water and thus the static water compartment will be more quickly exhausted and replenished with new, isotopically different water. Altogether, the isotopic compo-

sition of xylem water seems to confirm the two water worlds hypothesis, in which a soil-bound water pool is used by the plants, while another, highly mobile pool of precipitation water contributes to streams and groundwater (Brooks et al., 2010; Goldsmith et al., 2011; Evaristo et al., 2015).

From all plants on the crater rim, *Euphorbia tirucalli* had the highest evaporation distance, indicating that this evergreen shrub is adapted to use the most shallow water sources in this habitat. This allows it to exploit light precipitation events (“showers”) more effectively (Caldwell et al., 1998) and to coexist with other species that draw water from deeper sources. This physiology may be due to the unique combination of crassulacean acid metabolism (CAM) in the succulent stem of this species and  $\text{C}_3$  metabolism in its non-succulent leaves (Van Damme, 1999; Hastilestari et al., 2013). *E. tirucalli* has a high drought tolerance as its leaves wither and die (i.e., become deciduous) under extremely dry conditions, while the stem continues its CAM photosynthesis (Hastilestari et al., 2013). However, the succulent stem made it difficult to separate phloem and xylem, so that the collected water may be a combination of both and its isotopic signature enriched because of transpiration.

#### 4.3 Parameters affecting xylem-to-leaf deuterium enrichment

Averaging all sampled species over all seasons, the  $\delta^2\text{H}$  enrichment factor  $\epsilon_{\text{lx}}$  from xylem to leaf water in plants of the Lake Chala area is  $24 \pm 28\%$ . Simulating global patterns of leaf water  $\delta^2\text{H}$  enrichment, Kahmen et al. (2013) predicted  $\delta^2\text{H}$  enrichment to be strong in arid biomes ( $40\text{--}100\%$ ), intermediate in temperate biomes ( $10\text{--}30\%$ ) and weaker in humid tropical biomes ( $0\text{--}20\%$ ). Our values for the semi-arid tropical area of Lake Chala lie in the temperate model. The broad range of  $\delta^2\text{H}_{\text{leaf}}$  values measured in this study (from  $-83$  to  $37\%$ ) is not surprising as several environmental variables, including ambient temperature, relative humidity, wind speed and the  $\delta^2\text{H}$  of atmospheric water vapor influence the leaf water deuterium enrichment (Sachse et al., 2012, and references therein). The drier the atmosphere, the windier the conditions and the warmer the air, the larger the rates of transpiration and thus the rates of water uptake (Craig and Gordon, 1965). In our study region, the monthly average temperature varied only slightly (Fig. 2a) and will have a minor effect on the variability of  $\delta^2\text{H}_{\text{leaf}}$  and  $\epsilon_{\text{lx}}$  between months. To eliminate additional variability induced by previously reported large diurnal  $\delta$  variations in  $\delta^2\text{H}_{\text{leaf}}$  (Cernusak et al., 2002; Li et al., 2006; Kahmen et al., 2008), our samples were taken as much as possible around the same time of day.

In our study area, leaf phenology appears to exert an important influence on  $\delta^2\text{H}_{\text{leaf}}$ , and this is also reflected in  $\epsilon_{\text{lx}}$  (Fig. 6). The species-specific variation in  $\epsilon_{\text{lx}}$  is likely explained by differences in plant physiology and biochemistry. The highest  $\delta^2\text{H}_{\text{leaf}}$  and  $\epsilon_{\text{lx}}$  values were displayed by decid-

uous species, at least on the crater rim and in the savannah. Evergreen plants keeping their foliage during the dry season must be protected against drought stress by a high degree of succulence or sclerophylly (thickened or hardened leaves) to reduce moisture loss (Chabot and Hicks, 1982). Burghardt and Riederer (2003) observed that the peak cuticular transpiration rates of evergreens are approximately 1 order of magnitude lower than those of deciduous species. Thus, the adaptive traits of evergreens which reduce water loss and lower transpiration rates result in lower xylem-to-leaf deuterium enrichment. Differences in  $\varepsilon_{l/x}$  between habitats are not surprising, as the plants at the lakeshore are protected by the crater rim and less transpiration is expected compared to plants in the savannah and on the crater rim.

Extremely low  $\varepsilon_{l/x}$  values of, respectively,  $-24 \pm 30$  and  $8 \pm 15$ ‰ were recorded for *Maerua* sp. and *Thylachium africanum*, two evergreen Capparaceae growing on the crater rim (Fig. 6). This is indicative of very limited evapotranspiration. Slightly depleted  $\delta^2\text{H}_{\text{leaf}}$  values relative to  $\delta^2\text{H}_{\text{xylem}}$  (i.e., small, negative  $\varepsilon_{l/x}$  values) have previously been reported for some trees in *Rhizophora* mangroves (Ladd and Sachs, 2015). Ladd and Sachs (2015) ascribed this to the high ambient relative humidity, resulting in a small vapor pressure gradient across the leaf surface (see also Helliker and Ehleringer, 2000; Farquhar et al., 2007). The atypical  $\varepsilon_{l/x}$  values of the two Capparaceae in this study are possibly associated with their xerophytic traits, in particular the waxy appearance of the leaves in many species of this family (Elfers et al., 1964). These waxy and leathery leaves are useful adaptations to survive a long dry season, as plants lose water not only via their stomata but also across the cuticle (Schönherr, 1982). Oliveira et al. (2003) observed that the waxes of *Capparis yco*, a species belonging to the Capparaceae, are very efficient against water loss due to the predominance of *n*-alkanes in their composition. Thus, these waxes on the leaf surfaces of the two Capparaceae species could reduce the plants' transpiration and thus possibly explain their small  $\varepsilon_{l/x}$  values. Furthermore, taking into account highly diverse leaf morphology large variations in  $\delta^2\text{H}_{\text{leaf}}$  and  $\varepsilon_{l/x}$  between plant species were expected (Smith and Freeman, 2006; Kahmen et al., 2008).

The  $\varepsilon_{l/x}$  values of Lake Chala area plants did not show systematic variation according to growth form (that is, trees vs. shrubs). Judging from Fig. 6, the plants' habitat did significantly affect  $\varepsilon_{l/x}$ . However, *Grewia tephrodermis*, *Vepris uguenensis* and *Thylachium africanum* show similar  $\varepsilon_{l/x}$  values irrespective of the habitat in which they were sampled (Fig. 6). This suggests that the overall difference in  $\varepsilon_{l/x}$  values according to habitat is due to differences in the plant assemblage occurring in each habitat rather than habitat-specific factors. The temporal variability in  $\varepsilon_{l/x}$  was limited with only two of the sampled species (*Sideroxylon* sp. and *Lepisanthes senegalensis*) showing significant differences across seasons. Both species displayed lowest  $\varepsilon_{l/x}$  during the long rainy season (SE monsoon) and highest  $\varepsilon_{l/x}$  during both the short rainy

season (NE monsoon) and the dry season. Several studies observed that stomatal conductance in savannah plants declines during the dry season due to increased vapor pressure deficits and declining soil water availability (Duff et al., 1997; Prior et al., 1997). Surprisingly, O'Grady et al. (1999) detected higher transpiration rates in open-canopy eucalyptus forests in Australia during the dry season than during the wet season, mainly because of higher evaporative demand. Meinzer et al. (1993), on the other hand, found similar mean transpiration rates in a lowland tropical forest tree during the wet and dry seasons despite variation in the leaf-to-air vapor pressure difference. Our data on the majority of species sampled around Lake Chala are consistent with the observations of Meinzer et al. (1993) in that they do not show a significant difference in  $\varepsilon_{l/x}$  among seasons. In summary, our results point to the fact that on the local scale of a single study area with several distinct plant habitats, the plant species assemblage and associated prevailing leaf phenology are the primary factors influencing xylem-to-leaf water  $\delta^2\text{H}$  enrichment, while growth form and seasonality have negligible effects.

Along a major hydroclimate gradient influencing the composition of plant assemblages on the (sub-) continental scale, the  $\delta^2\text{H}$  of plant leaf wax *n*-alkanes ( $\delta^2\text{H}_{\text{wax}}$ ) varies with the mean  $\delta^2\text{H}$  value of local precipitation (Sachse et al., 2004; Huang et al., 2004; Hou et al., 2008; Polissar and Freeman, 2010; Garcin et al., 2012; Tipple and Pagani, 2013); it is this relationship which underpins the use of leaf wax  $\delta^2\text{H}$  signatures in hydroclimate reconstruction. Precipitation forms the plant's water source and is supposed to be the primary control of  $\delta^2\text{H}_{\text{wax}}$  (Sachse et al., 2012). However, the relative importance of the potential water sources (precipitation, xylem water, leaf water) for lipid synthesis in plant leaves is unknown. Several authors (Sachse et al., 2004; Feakins and Sessions, 2010; Polissar and Freeman, 2010; Kahmen et al., 2013) stated that the leaf water deuterium enrichment also shapes  $\delta^2\text{H}_{\text{wax}}$ . Another constraint for a robust interpretation is the limited understanding of the temporal integration of environmental conditions in  $\delta^2\text{H}_{\text{wax}}$ . Finally, the net or apparent fractionation between precipitation and leaf wax *n*-alkanes, which integrate these uncertainties, is used for paleoclimate reconstructions. Despite its enormous potential, hydroclimate interpretations remain problematic because of uncertainties in the effects of past variation in water source  $\delta^2\text{H}$ , xylem-to-leaf  $\delta^2\text{H}$  enrichment and the biosynthetic isotopic depletion which occurs during *n*-alkane synthesis (Sessions et al., 1999; Liu and Yang, 2008; Smith and Freeman, 2006; Sachse et al., 2012). This study investigated the first two of these sources of uncertainty. The third source of uncertainty requires investigations into whether the effects of growth form, phenology, habitat and seasonality that are (not) reflected in  $\varepsilon_{l/x}$  are preserved in the leaf wax *n*-alkanes.

## 5 Conclusions

In this study, we measured  $\delta^{18}\text{O}$  and  $\delta^2\text{H}$  of precipitation, lake water, groundwater, and plant xylem and leaf water across different plant species, seasons and habitats with varying distances to Lake Chala in equatorial East Africa. We found that the trajectory of the air masses delivering rain to the area considerably influences the seasonal signature of water isotopes in precipitation but that not all of its variability can be explained in this way. Lake-surface water showed stable  $\delta^{18}\text{O}_{\text{lake}}$  and  $\delta^2\text{H}_{\text{lake}}$  with, counterintuitively, seasonally lowest isotopic values during the dry season.

No statistical differences were observed between the source water of evergreen and deciduous plants in the three principal habitats around Lake Chala, as inferred from the intersection point ( $\delta^2\text{H}_{\text{LMWL-int}}$ ) of the plants' LELs with the LMWL. We found that the large seasonal variability in  $\delta^2\text{H}$  of precipitation was not reflected in the isotopic composition of xylem water. In all three habitats, the plants' principal source water was NE monsoon precipitation falling during the short rainy season (in this year, mostly November–December), likely because these first rains following the long dry season recharged the dry soil. The plants' available water pool was replenished only stepwise by more enriched precipitation from the SE monsoon falling during the long rainy season (in this year, February–May). Consequently, only a minor temporal shift in the isotopic composition of xylem water was observed. These results are in agreement with the two water worlds hypothesis, where plants rely on a static water pool, while a mobile water pool recharges groundwater and is exported to streams as runoff. The ED indicates that spatial variability in water resource use exists in the study region. ED values of trees were higher than shrubs in both the lakeshore and crater-rim habitat. At the crater rim, this indicates that trees use more topsoil water, presumably because the trees' root distribution is driven by their high nutrient needs to sustain a large canopy. At the lakeshore, this indicates that trees take up a larger fraction of lake water compared to shrubs. In contrast to water source, leaf phenology (deciduous vs. evergreen) plays a key role in determining the xylem-to-leaf water deuterium enrichment in this semi-arid tropical environment. Deciduous species gave highest  $\varepsilon_{\text{lx}}$  values, probably because evergreens are better protected against loss of moisture.

Our observations have important implications for the interpretation of  $\delta^2\text{H}$  of plant leaf wax *n*-alkanes from paleohydrological records in tropical East Africa, as hydroclimate interpretations remain problematic because of uncertainties in the effects of past variation in water source  $\delta^2\text{H}$  and leaf water deuterium enrichment. Future studies should establish whether the interspecies variability in xylem–leaf enrichment ( $24 \pm 28\%$ ) has the potential to bias paleoclimate reconstructions, given the floristic diversity and likelihood of changes in species assemblage with climate shifts.

## 6 Data availability

Isotopic data from savannah, lakeshore and the crater rim, respectively, can be obtained from the Neotoma Paleocology Database through the following links: <http://apps.neotomadb.org/Explorer/?datasetid=21119> (De Wispelaere et al., 2017a); <http://apps.neotomadb.org/Explorer/?datasetid=21147> (De Wispelaere et al., 2017b); and <http://apps.neotomadb.org/Explorer/?datasetid=21148> (De Wispelaere et al., 2017c).

**The Supplement related to this article is available online at doi:10.5194/bg-14-73-2017-supplement.**

*Acknowledgements.* The authors would like to thank two anonymous referees for valuable comments on a previous version of this paper. We are grateful to Caxton Oluseno for sample collection and J. J. Wieringa for help with plant identification. We thank the Special Research Fund of Ghent University for support to L. De Wispelaere (BOF CRA 01GB2312) and the German Research foundation (DFG) for support to A. Hemp. P. Hervé-Fernández is funded by Programa de Formación de Personal Avanzado CONICYT, BECAS CHILE and by the Bijzonder Onderzoeksfonds (BOF) of Ghent University.

Edited by: E. Veldkamp

Reviewed by: two anonymous referees

## References

- Araguás-Araguás, L., Rozanski, K., Gonfiantini, R., and Louvat, D.: Isotope effects accompanying vacuum extraction of soil water for stable isotope analyses, *J. Hydrol.*, 168, 159–171, 1995.
- Araguás-Araguás, L., Froehlich, K., and Rozanski, K.: Deuterium and oxygen-18 isotope composition of precipitation and atmospheric moisture, *Hydrol. Process.*, 14, 1341–1355, 2000.
- Barker, P. A., Hurrell, E. R., Leng, M. J., Wolff, C., Cocquyt, C., Sloane, H. J., and Verschuren, D.: Seasonality in equatorial climate over the past 25 kyr<sup>-1</sup> revealed by oxygen isotope records from Mount Kilimanjaro, *Geology*, 39, 1111–1114, 2011.
- Breitenbach, S., Adkins, J., Meyer, H., Marwan, N., Kumar, K., and Haug, G.: Strong influence of water vapor source dynamics on stable isotopes in precipitation observed in Southern Meghalaya, NE India, *Earth Planet. Sc. Lett.*, 292, 212–220, 2010.
- Brooks, J., Barnard, H., Coulombe, R., and McDonnell, J.: Ecohydrologic separation of water between trees and streams in a Mediterranean climate, *Nat. Geosci.*, 3, 100–104, 2010.
- Buckles, L. K., Weijers, J. W. H., Verschuren, D., and Sinninghe Damsté, J. S.: Sources of core and intact branched tetraether membrane lipids in the lacustrine environment: anatomy of Lake Challa and its catchment, equatorial East Africa, *Geochim. Cosmochim. Ac.*, 140, 106–126, 2014.



- Burghardt, M. and Riederer, M.: Ecophysiological relevance of cuticular transpiration of deciduous and evergreen plants in relation to stomatal closure and leaf water potential, *J. Exp. Bot.*, 54, 1941–1949, doi:10.1093/jxb/erg195, 2003.
- Caldwell, M. M., Dawson, T. E., and Richards, J. H.: Hydraulic lift: consequences of water efflux from roots of plants, *Oecologia*, 113, 151–161, 1998.
- Cernusak, L. A., Pate, J. S., and Farquhar, G. D.: Diurnal variation in the stable isotope composition of water and dry matter in fruiting *Lupinus angustifolius* under field conditions, *Plant Cell Environ.*, 25, 893–907, 2002.
- Chabot, B. F. and Hicks, D. J.: The ecology of leaf life spans, *Annu. Rev. Ecol. Syst.*, 13, 229–259, 1982.
- Cohen, E. R., Cvitas, T., Frey, J. G., Holmstrom, B., Kuchitsu, K., Marquardt, R., Mills, I., Pavese, F., Quack, M., Stohner, J., Strauss, H. L., Takami, M., and Thor, A. J.: Quantities, Units and Symbols in Physical Chemistry, Cambridge, UK, R. Soc. Chem. Publ. 265 pp. 3rd ed., 2007.
- Corbin, J. D., Thomsen, M. A., Dawson, T. E., and D'Antonio, C. M.: Summer water use by California coastal prairie grasses: fog, drought, and community composition, *Oecologia*, 145, 511–521, 2005.
- Costa, K., Russell, J., Konecky, B., and Lamb, H.: Isotopic reconstruction of the African Humid Period and Congo Air Boundary migration at Lake Tana, Ethiopia, *Quaternary Sci. Rev.*, 83, 58–67, 2014.
- Craig, H.: Isotopic variations in meteoric waters, *Science*, 133, 1702–1703, 1961.
- Craig, H. and Gordon, L. I.: Deuterium and oxygen-18 variations in the ocean and the marine atmosphere, in: Proceedings of the conference on stable isotopes in oceanographic studies and paleotemperatures, edited by: Tongiorgi, E., Laboratory of Geology and Nuclear Science, Pisa, Italy, 9–130, 1965.
- Dansgaard, W.: Stable isotopes in precipitation, *Tellus*, 16, 436–468, 1964.
- Dawson, T. and Ehleringer, J.: Streamside trees that do not use stream water, *Nature*, 350, 335–337, 1991.
- Dawson, T. and Ehleringer, J.: Isotopic enrichment of water in the “woody” tissues: Implications for plant water source, water uptake, and other studies which use the stable isotopic composition of cellulose, *Geochim. Cosmochim. Ac.*, 57, 3487–3492, 1993.
- Dawson, T. E.: Determining water use by trees and forests from isotopic, energy balance and transpiration analyses: the roles of tree size and hydraulic lift, *Tree Physiol.*, 16, 263–272, 1996.
- De Wispelaere, L., Bodé, S., Hervé-Fernández, P., Hemp, A., Verschuren, D., and Boeckx, P.: Lake Challa Savannah data, available at: <http://apps.neotomadb.org/Explorer/?datasetid=21119>, last access: 5 January 2017.
- De Wispelaere, L., Bodé, S., Hervé-Fernández, P., Hemp, A., Verschuren, D., and Boeckx, P.: Lake Challa Lakeshore data, available at: <http://apps.neotomadb.org/Explorer/?datasetid=21147>, last access: 5 January 2017.
- De Wispelaere, L., Bodé, S., Hervé-Fernández, P., Hemp, A., Verschuren, D., and Boeckx, P.: Lake Challa Crater Rim data, available at: <http://apps.neotomadb.org/Explorer/?datasetid=21148>, last access: 5 January 2017.
- Draxler, R. and Hess, G. D.: Description of the HYSPLIT\_4 modeling system, NOAA Technical Memorandum ERL ARL-224, NOAA Air Resources Laboratory, Silver Spring, Maryland, USA, 2004.
- Duff, G. A., Myers, B. A., Williams, R. J., Eamus, D., O'Grady, A., and Fordyce, I. R.: Seasonal patterns in soil moisture, vapor pressure deficit, tree canopy cover and pre-dawn water potential in a northern Australian savanna, *Aust. J. Bot.*, 45, 211–274, 1997.
- Eglinton, G. and Hamilton, R. J.: Leaf epicuticular waxes, *Science*, 156, 1322–1335, 1967.
- Ehleringer, J. R., Phillips, S. L., Schuster, W. F. S., and Sandquist, D. R.: Differential utilization of summer rains by desert plants, *Oecologia*, 88, 430–434, 1991.
- Elffers, J., Graham, A., and DeWolf, G. P.: Capparidaceae, in: Flora of tropical East Africa, edited by: Hubbard, C. E. and Milne-Redhead, E., 35, Crown Agents for Oversea Governments and Administrations, London, UK, 1964.
- Ellsworth, P. and Williams, D.: Hydrogen isotope fractionation during water uptake by woody xerophytes, *Plant Soil*, 291, 93–107, 2007.
- Evaristo, J., Jasenchko, S., and McDonnell, J. J.: Global separation of plant transpiration from groundwater and streamflow, *Nature*, 525, 91–97, 2015.
- Farquhar, G. D., Cernusak, L. A., and Barnes, B.: Heavy water fractionation during transpiration, *Plant Physiol.*, 143, 11–18, 2007.
- Feakins, S. J. and Sessions, A. L.: Controls on the D/H ratios of plant leaf waxes from an arid ecosystem, *Geochim. Cosmochim. Ac.*, 74, 2128–2141, 2010.
- Field, T. S. and Dawson, T. E.: Water sources used by *Didymopanax pittieri* at different life stages in a tropical cloud forest, *Ecology*, 79, 1448–1452, 1998.
- Friedman, I., Smith, G. I., Gleason, J. D., Warden, A., and Harris, J.: Stable isotope composition of waters in southeastern California, *J. Geophys. Res.*, 97, 5795–5812, 1992.
- Garcin, Y., Schwab, V. F., Gleixner, R. G., Kahmen, A., Todou, G., Sene, O., and Sachse, D.: Hydrogen isotope ratios of lacustrine sedimentary *n*-alkanes as proxies of tropical African hydrology: insights from a calibration transect across Cameroon, *Geochim. Cosmochim. Ac.*, 79, 106–126, 2012.
- Gat, J. R.: Oxygen and hydrogen isotopes in the hydrologic cycle, *Annu. Rev. Earth Pl. Sc.*, 24, 225–262, 1996.
- Gat, J.: *Isotope Hydrology: A Study of the Water Cycle*, Imperial College Press: 57 Shelton Street, Covent Garden, London, UK, 2005.
- Gibson, J. J., Birks, S. J., and Edwards, T. W. D.: Global prediction of  $\delta A$  and  $\delta 2H$ - $\delta 18O$  evaporation slopes for lakes and soil water accounting for seasonality, *Global Biogeochem. Cy.*, 22, GB2031, doi:10.1029/2007GB002997, 2008.
- Goldsmith, G., Muñoz-Villers, L., Holwerda, F., McDonnell, J., Asbjornsen, H., and Dawson, T.: Stable isotopes reveal linkages among ecohydrological processes in a seasonally dry tropical montane cloud forest, *Ecohydrology*, 5, 779–790, 2011.
- Goldstein, G., Meinzer, F. C., Bucci, S. J., Scholz, F. G., Franco, A. C., and Hoffmann, W. A.: Water economy of Neotropical savanna trees: six paradigms revisited, *Tree Physiol.*, 28, 395–404, 2008.
- Groning, M., Lutz, H. O., Roller-Lutz, Z., Kralik, M., Gourcy, L., and Poltenstein, L.: A simple rain collector preventing water re-evaporation dedicated for  $\delta 18O$  and  $\delta 2H$  analysis of cumulative precipitation samples, *J. Hydrol.*, 448–449, 195–200, 2012.

- Hastilestari, B. R., Mudersbach, M., Tomala, F., Vogt, H., Biskupek-Korell, B., Van Damme, P., Guretzki, S., and Papenbrock, J.: *Euphorbia tirucalli* L. – Comprehensive Characterization of a Drought Tolerant Plant with a Potential as Biofuel Source, *PLoS ONE*, 8, e63501, doi:10.1371/journal.pone.0063501, 2013.
- Helliker, B. R. and Ehleringer, J. R.: Establishing a grassland signature in veins:  $\delta^{18}\text{O}$  in the leaf water of C3 and C4 grasses, *P. Natl. Acad. Sci. USA*, 97, 7894–7898, 2000.
- Hemp, A.: Ecology of the pteridophytes on the southern slopes of Mt. Kilimanjaro, Part II: Habitat selection, *Plant Biol.*, 3, 493–523, 2001.
- Hemp, A.: Continuum or zonation? Altitudinal gradients in the forest vegetation of Mt. Kilimanjaro, *Plant Ecol.*, 184, 27–42, 2006a.
- Hemp, A.: Vegetation of Kilimanjaro: hidden endemics and missing bamboo, *Afr. J. Ecol.*, 44, 305–328, 2006b.
- Hou, J., D’Andrea, W. J., and Huang, Y.: Can sedimentary leaf waxes record D/H ratios of continental precipitation? Field, model, and experimental assessments, *Geochim. Cosmochim. Ac.*, 72, 3503–3517, 2008.
- Huang, Y., Shuman, B., Wang, Y., and Webb, I. I. T.: Hydrogen isotope ratios of individual lipids in lake sediments as novel tracers of climatic and environmental change: a surface sediment test, *J. Paleolimnol.*, 31, 363–375, 2004.
- Jackson, P. C., Cavelier, J., Goldstein, G., Meinzer, F. C., and Holbrook, N. M.: Partitioning of Water Resources among Plants of a Lowland Tropical Forest, *Oecologia*, 101, 197–203, 1995.
- Jackson, P. C., Meinzer, F. C., Bustamante, M., Goldstein, G., Franco, A., Rundel, P. W., and Caldas, L.: Partitioning of soil among tree species in a Brazilian Cerrado ecosystem, *Tree Physiol.*, 19, 717–724, 1999.
- Kahmen, A., Simonin, K., Tu, K. P., Merchant, A., Callister, A., Siegwolf, R., Dawson, T. E., and Arndt, S. K.: Effects of environmental parameters, leaf physiological properties and leaf water relations on leaf water  $\delta^{18}\text{O}$  enrichment in different Eucalyptus species, *Plant Cell Environ.*, 31, 738–751, doi:10.1111/j.1365-3040.2008.01784.x, 2008.
- Kahmen, A., Hoffmann, B., Schefuss, E., Arndt, S. K., Cernusak, L. A., West, J. B., and Sachse, D.: Leaf water deuterium enrichment shapes leaf wax *n*-alkane  $\delta^2\text{H}$  values of angiosperm plants II: Observational evidence and global implications, *Geochim. Cosmochim. Ac.*, 111, 50–63, 2013.
- Kenya Food Security Group (KFSSG): October to December 2013 short rains season assessment report, Collaborative report of the Kenya Food Security Steering Group: Ministries of Devolution and Planning, Agriculture, Livestock and Fisheries, Environment, Water and Natural Resources, Health, and Education, Science and Technology, National Drought Management Authority, WFP/VAM, FEWS NET, FAO, CARE-Kenya, UNICEF, World Vision, ACF; with financial support from the Government of Kenya, FAO and WFP; February 2014.
- Ladd, S. N. and Sachs, J. P.: Influence of salinity on hydrogen isotope fractionation in *Rhizophora* mangroves from Micronesia, *Geochim. Cosmochim. Ac.*, 168, 206–221, 2015.
- Li, S. G., Tsujimura, M., Sugimoto, A., Sasaki, L., Yamanaka, T., Davaa, G., Oyunbaatar, D., and Sugita, M.: Seasonal variation in oxygen isotope composition of water for a montane larch forest in Mongolia, *Trees-Struct. Funct.*, 20, 122–130, 2006.
- Liu, W. and Yang, H.: Multiple controls for the variability of hydrogen isotope compositions in higher plant *n*-alkanes from modern ecosystems, *Global Change Biol.*, 14, 2166–2177, 2008.
- Liu, W., Liu, W., Li, P., Duan, W., and Li, H.: Dry season water uptake by two dominant canopy tree species in a tropical seasonal rainforest of Xishuangbanna, SW China, *Agr. Forest Meteorol.*, 150, 380–388, 2010.
- Martín-Gómez, P., Barbeta, A., Voltas, J., Penuelas, J., Dennis, K., Palacio, S., Dawson, T., and Ferrio, J.: Methods Isotope-ratio infrared spectroscopy: a reliable tool for the investigation of plant-water sources?, *New Phytol.*, 207, 914–927, 2015.
- Mayer, B. and Schwark, L.: A 15 000-year stable isotope record from sediments of Lake Steisslingen, Southwest Germany, *Chem. Geol.*, 161, 315–337, 1999.
- McKenzie, J. M., Mark, B. G., Thompson, L. G., Schotterer U., and Lin, P.: A hydrogeochemical survey of Kilimanjaro (Tanzania): implication for water sources and ages, *Hydrogeol. J.*, 18, 985–995, 2010.
- Meinzer, F. C., Andrade, J. L., Goldstein, G., Holbrook, M. N., Cavelier, J., and Wright, S. J.: Partitioning of soil water among canopy trees in a seasonally dry tropical forest, *Oecologia*, 121, 293–301, 1999.
- Meinzer, F. C., Goldstein, G., Holbrook, N. M., Jackson, P., and Cavelier, J.: Stomatal and environmental control of transpiration in a lowland tropical forest tree, *Plant Cell Environ.*, 16, 429–436, 1993.
- Moernaut, J., Verschuren, D., Charlet, F., Kristen, I., Fagot, M., and De Batist, M.: The seismic-stratigraphic record of lake-level fluctuations in Lake Challa: hydrological stability and change in equatorial East Africa over the last 140 kyr, *Earth Planet. Sc. Lett.*, 290, 214–223, 2010.
- Nicholson, S. E.: The nature of rainfall variability over Africa on time scales of decades to millennia, *Global Planet Change*, 26, 137–158, doi:10.1016/S0921-8181(00)00040-0, 2000.
- O’Grady, A. P., Eamus, D., and Hutley, B.: Transpiration increases during the dry season: patterns of tree water use in eucalypt open-forests of northern Australia, *Tree Physiol.*, 19, 591–597, 1999.
- Oliveira, F. M., Meirelles, S. T., and Salatino, A.: Epicuticular waxes from caatinga and cerrado species and their efficiency against water loss, *Annals of the Brazilian Academy of Sciences*, 75, 432–439, 2003.
- Orlowski, N., Pratt, D. L., and McDonnell, J. J.: Intercomparison of soil pore water extraction methods for stable isotope analysis, *Hydrol. Process.*, 30, 3434–3449, doi:10.1002/hyp.10870, 2016
- Payne, B. R.: Water balance of Lake Chala and its relation to groundwater from tritium and stable isotope data, *J. Hydrol.*, 11, 47–58, 1970.
- Polissar, P. J. and Freeman, K. H.: Effects of aridity and vegetation on plant-wax  $\delta^2\text{H}$  in modern lake sediments, *Geochim. Cosmochim. Ac.*, 74, 5785–5797, 2010.
- Prior, L. D., Eamus, D., and Duff, G. A.: Seasonal trends in carbon assimilation, stomatal conductance and pre-dawn leaf water potential in *Terminalia ferdinandiana*, a deciduous tree of northern Australian savannas, *Aust. J. Bot.*, 45, 53–69, 1997.
- Rozanski, K., Araguás-Araguás, L., and Gonfiantini, R.: Isotopic patterns in modern global precipitation, *Geophysical Monograph*, 78, 1–35, 1993.

- Sachse, D., Radke, J., and Gleixner, G.: Hydrogen isotope ratios of recent lacustrine sedimentary *n*-alkane record modern climate variability, *Geochim. Cosmochim. Ac.*, 63, 4877–4889, 2004.
- Sachse, D., Billault, I., Bowen, G., Chikaraishi, Y., Dawson, T., Feakins, S. J., Freeman, K. H., Magill, C. R., McInerney, F. A., van der Meer, M. T. J., Polissar, P., Robins, R. J., Sachs, J. P., Schmidt, H., Sessions, A. L., White, J. W. C., West, J. B., and Kahmen, A.: Molecular Paleohydrology: Interpreting the Hydrogen-Isotopic Composition of Lipid Biomarkers from Photosynthesizing Organisms, *Annu Rev. Earth Pl. Sc.*, 40, 221–249, 2012.
- Schönherr, J.: Resistance of plant surfaces to water loss: transport properties of cutin, suberin and associated lipids, in: *Encyclopedia of plant physiology*, edited by: Lange, O. L., Nobel, P. S., Osmond, C. B., and Ziegler, H., Springer, Berlin, Germany, 12B, 153–179, 1982.
- Sessions, A. L.: Seasonal changes in D/H fractionation accompanying lipid biosynthesis in *Spartina alterniflora*, *Geochim. Cosmochim. Ac.*, 70, 2153–2162, 2006.
- Sessions, A. L., Burgoyne, T. W., Schimmelfmann, A., and Hayes, J. M.: Fractionation of hydrogen isotopes in lipid biosynthesis, *Org. Geochem.*, 30, 1193–1200, 1999.
- Smith, F. A. and Freeman, K. H.: Influence of physiology and climate on  $\delta^2\text{H}$  of leaf wax *n*-alkanes from C3 and C4 grasses, *Geochim. Cosmochim. Ac.*, 70, 1172–1187, 2006.
- Soderberg, K., Good, S. P., O’Conner, M., Wang, L., Ryan, K., and Caylor, K. K.: Using air parcel trajectories to model the isotopic composition of rainfall in central Kenya, *Ecosphere*, 4, 1–18, doi:10.1890/ES12-00160.1, 2013.
- Stahl, C., Hérault, B., Rossi, V., Burban, B., Bréchet, C., and Bonal, D.: Depth of soil water uptake by tropical rainforest trees during dry periods: does tree dimension matter?, *Oecologia*, 173, 1191–1201, 2013.
- Stratton, L. C., Goldstein, G., and Meinzer, F. C.: Temporal and spatial partitioning of water resources among eight woody species in a Hawaiian dry forest, *Oecologia*, 124, 309–317, 2000.
- Tierney, J. E., Russell, J. M., Huang, Y., Sinninghe Damsté, J. S., Hopmans, E. C., and Cohen, A. S.: Northern hemisphere controls on tropical southeast African climate during the past 60 000 years, *Science*, 322, 252–254, 2008.
- Tierney, J. E., Russell, J. M., Sinninghe Damsté, J. S., Huang, Y., and Verschuren, D.: Late Quaternary behavior of the East African monsoon and the importance of the Congo Air Boundary, *Quaternary Sci. Rev.*, 30, 798–807, 2011.
- Tipple, B. and Pagani, M.: Environmental control on eastern broadleaf forest species’ leaf wax distributions and D/H ratios, *Geochim. Cosmochim. Ac.*, 111, 64–77, 2013.
- Thompson, L. G., Mosley-Thompson, E., Davis, M. E., Lin, P. N., Henderson, K., and Mashiotto, T. A.: Tropical glacier and ice core evidence of climate change on annual to millennial time scales, *Climatic Change*, 59, 137–155, 2003.
- Van Damme, P.: *Euphorbia tirucalli* for High Biomass Production, in: *Combating desertification with plants*, Conferenc, 1–5 November 1999, Be’er Sheva, Israel, 1999.
- Verschuren, D., Sinninghe Damsté, J. S., Moernaut, J., Kristen, I., Blaauw, M., Fagot, M., Haug, G. H., and CHALLACEA project members: Halfprecessional dynamics of monsoon rainfall near the East African Equator, *Nature*, 462, 637–641, 2009.
- Volkens, G.: *Der Kilimandscharo. Darstellung der allgemeineren Ergebnisse eines fünfzehnmonatigen Aufenthalts im Dschaggalande*, Reimer, Berlin, Germany, 1897.
- von Grafenstein, U., Erlenkeuser, H., Brauer, A., Jouzel, J., and Johnsen, S. J.: A mid-European decadal isotopeclimate record from 15 500 to 5000 years B.P., *Science*, 284, 1654–1657, 1999.
- West, A. G., Patrickson, S. J., and Ehleringer, J. R.: Water extraction times for plant and soil materials used in stable isotope analysis, *Rapid Commun. Mass Sp.*, 20, 1317–1321, 2006.
- White, J. W. C., Cook, E. R., Lawrence, J. R., and Broecker, W. S.: The D/H ratios of sap in trees: Implications for water sources and tree ring D/H ratios, *Geochim. Cosmochim. Ac.*, 49, 237–246, 1985.
- Wolff, C., Kristen-Jenny, I., Schettler, G., Plessen, B., Meyer, H., Dulski, P., Naumann, R., Brauer, A., Verschuren, D., and Haug, G. H.: Modern seasonality in Lake Challa (Kenya/Tanzania) and its sedimentary documentation in recent lake sediments, *Limnol. Oceanogr.*, 59, 1621–1636, 2014.
- Zhao, L., Wang, L., Cernusak, L. A., Xiaohong, L., Xiao, H., Zhou, M., and Zhang, S.: Significant difference in hydrogen isotope composition between xylem and tissue water in *Populus euphratica*, *Plant Cell Environ.*, 39, 1848–1857, doi:10.1111/pce.12753, 2016.
- Zimmermann, U., Ehhalt, D., and Münnich, K.: Soil-Water movement and evapotranspiration: changes in the isotopic composition of the water, in: *Conference on Isotopes in Hydrology*, 14–18 November 1966, Vienna, Austria, 567–585, 1967.
- Zuber, A.: On the environmental isotope method for determining the water balance components of some lakes, *J. Hydrol.*, 61, 409–427, 1983.