

Case 14477

McCune Albright Syndrome (MAS) - polyostotic fibrous dysplasia

Lukasz Augsburg¹, Filip M. Vanhoenacker^{1, 2, 3}, Jan Gielen¹

1. University Hospital Antwerp, Department of Radiology, University Hospital Antwerp; Wilrijkstraat, 10, B- 2650 Antwerp, Belgium; Email:filip.vanhoenacker@telenet.be

2. AZ Sint-Maarten Duffel-Mechelen, Department of Radiology; Leopoldstraat 2, 2800 Mechelen, Belgium

3. Faculty of Medicine and Health Sciences, Ghent University, Belgium
University Hospital Antwerp

Section: Musculoskeletal System

Published: 2017, Mar. 29

Patient: 15 year(s), male

Clinical History

A 15-year-old boy presented to the pediatrician with precocious puberty, hyperthyroidism, hyperprolactinemia and large, asymmetric head.

Inspection of the skin showed café-au-lait" spots located mainly on the back (Fig. 1) en left buttock.

Imaging Findings

Conventional radiography (CR) showed multiples bone lesions with a ground glass appearance in both femurs (Fig. 2, Fig. 3), left humerus (Fig. 4), right tibia and right talus (Fig. 5, Fig. 6). Bone scintigraphy showed multifocal tracer uptake in the axial and appendicular skeleton suggesting active osteoblastic activity (Fig. 7).

Magnetic Resonance Imaging (MRI) of the brain showed asymmetric expansion of the calvaria and facial bones with significant bone thickening. Lesions showed predominantly low, slightly inhomogeneous signal intensity on all pulse sequences (Fig.8, Fig.9, Fig. 10). The brain was normal (Fig. 8, Fig. 9). The orbits were small. (Fig. 10). However, there was no compression of the optic nerve (Fig. 10).

Discussion

Based on the combination of clinical and imaging findings, the diagnosis of McCune-Albright syndrome (MAS) was made.

MAS is a genetic disorder characterized by a typical triad of symptoms: polyostotic fibrous dysplasia (FD), skin pigmentation (café-au-lait spots) and endocrinological disorders [1]. Gonadal dysfunction is considered to be the most common endocrine defect in females, resulting in precocious puberty and vaginal bleeding. However, Cushing syndrome, pituitary adenomas and hyperthyroidism are also reported [2]. MAS develops from activation of a post-zygotic, sporadic or somatic mutation of the GNAS1 gene with different clinical manifestations [3]. Affected children usually present with skeletal deformities and short stature, resulting from premature closure of the epiphyses.

FD is a tumor-like condition of the bone. Histologically it corresponds to immature bone with delicate trabeculae and interspersed fibrous matrix [4]. This makes the bone more prone to microfractures, repetitive remodelling and subsequent deformation [5]. FD associated with MAS usually affects multiples bones and leads more frequently to complications such as fractures, skeletal deformities or limb-length discrepancies. It affects most commonly the femora, tibiae, pelvis, skull and ribs. Imaging features of FD may vary from either completely radiolucent lesions, sclerotic delineated radiolucent lesions or lesions with a ground-glass matrix appearance. In case of disease progression, bowing of the proximal femora (coxa vara) may occur due to multiple fractures and repetitive remodelling, resulting in the so-called Sheppard's crook deformity. [4, 6].

Conventional radiography (CR) is usually sufficient to make a reliable diagnosis.

Bone scintigraphy may reveal increased osteoblastic activity in affected bones. It is particularly useful to assess multifocality.

Computed tomography (CT) is usually not mandatory, but may be used to evaluate the precise extent of FD and potential compression of adjacent structures in complex anatomical structures such as the facial bones, skull base and the axial skeleton. However, due to high radiation dose, the use of CT should be considered with caution.

Particularly in the pediatric population, MRI is the preferred technique for evaluation of the lesion extent in the skull bones. Bone expansion may cause compression of adjacent structures, such as the optic nerve, resulting in visual disturbances. Osteotomy of the involved bones should be considered in this scenario.

Malignant transformation of bone lesions is rare.

Paget's disease may appear similar on imaging but is seen in older patients. Association of FD and intramuscular myxoma is known as Mazabraud syndrome.

Final Diagnosis

Polyostotic fibrous dysplasia related to McCune-Albright Syndrome

Differential Diagnosis List

Mazabraud syndrome, Sporadic fibrous dysplasia, Paget's disease

Figures

Figure 1 Café au lait spots on the back of the patient.



Irregularly delineated café-au-lait spots, resembling the coast of Maine in the United States of America.

© Lukasz Augsburg, UZA, Antwerpen

Area of Interest: Musculoskeletal system;
Imaging Technique: Plain radiographic studies;
Procedure: Education;
Special Focus: Congenital;

Figure 2 Conventional radiography of the right femur (AP projection)



Conventional radiography of the right femur (AP projection) shows a slightly expansile lesion (asterisk) in the proximal diaphysis with a ground-glass appearance and widening of the medullary cavity. Note subtle deformity of the hip (arrows).

© Augsburg L, Department of Radiology, UZA, Antwerp, Belgium

Area of Interest: Musculoskeletal bone;
Imaging Technique: Conventional radiography;
Procedure: Education;
Special Focus: Congenital;

Figure 3 Conventional radiography of the left femur (AP projection)



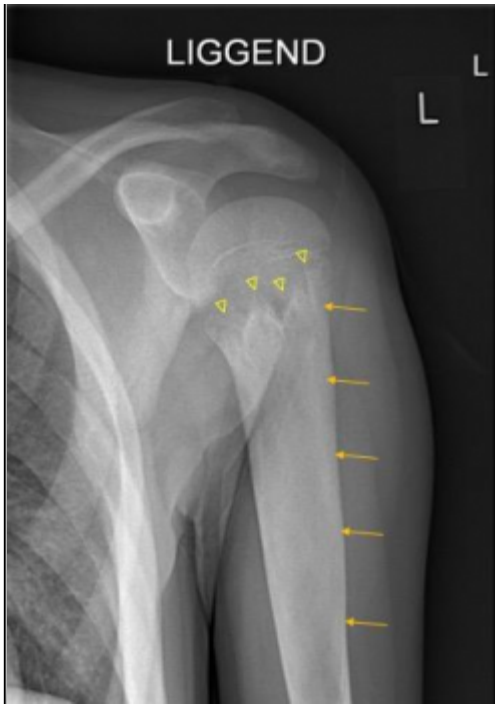
Conventional radiography of the left femur (AP projection) shows a ground-glass lesion in the proximal diaphysis. Note also more subtle lesions in the middle and distal diaphysis (arrowheads). Note slight deformity of the femoral diaphysis.

© Augsburg L, Department of Radiology, UZA, Antwerp, Belgium

Area of Interest: Musculoskeletal bone;
Imaging Technique: Conventional radiography;
Procedure: Education;
Special Focus: Congenital;

Figure 4 Conventional radiography of the right humerus (AP projection)





Conventional radiography of the left humerus (AP projection) shows bone expansion of the proximal diaphysis of the left humerus with homogeneous ground-glass matrix (arrows). Note sclerotic teeth-like border with normal proximal metaphysis (arrowheads).

© Augsburg L, Department of Radiology, UZA, Antwerp, Belgium

Area of Interest: Musculoskeletal bone;
 Imaging Technique: Conventional radiography;
 Procedure: Education;
 Special Focus: Congenital;

Figure 5 Conventional radiography of the right foot (AP projection)



Conventional radiography of the right foot (AP projection) depicts a focal radiolucent lesion with sclerotic margin in the talar head (arrows). Note also lesions with ground-glass aspect in

the metatarsals (thick open arrows).

© Augsburg L, Department of Radiology, UZA, Antwerp, Belgium

Area of Interest: Musculoskeletal bone;
Imaging Technique: Conventional radiography;
Procedure: Education;
Special Focus: Congenital;

Figure 6 Conventional radiography of the right foot (oblique projection)



Conventional radiography of the right foot (oblique projection) depicts the ground-glass appearance in the talar body and neck (asterisk) and deformity of the head (arrowheads).

© Augsburg L, Department of Radiology, UZA, Antwerp, Belgium

Area of Interest: Musculoskeletal bone;
Imaging Technique: Conventional radiography;
Procedure: Education;
Special Focus: Congenital;

Figure 7 Bone scintigraphy





Bone scintigraphy. Anterior (a) and posterior (b) projection show increased osteoblastic activity in de skull, ribs, pelvis, left humerus, both femora, right tibia and talus.

© Augsburg L, Department of Radiology, UZA, Antwerp, Belgium

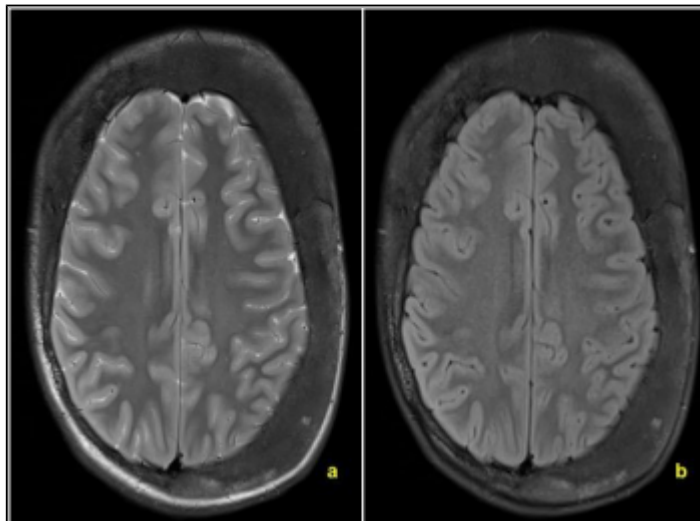
Area of Interest: Musculoskeletal bone;

Imaging Technique: SPECT;

Procedure: Education;

Special Focus: Metabolic disorders;

Figure 8 Magnetic resonance (MR) of the brain



MR of the brain. Axial T2-weighted images (a), FLAIR images (b). MR shows marked but asymmetrical thickening of the calvaria. Although the lesions are slightly inhomogeneous, the overall appearance is of predominant low signal.

© Augsburg L, Department of Radiology, UZA, Antwerp, Belgium

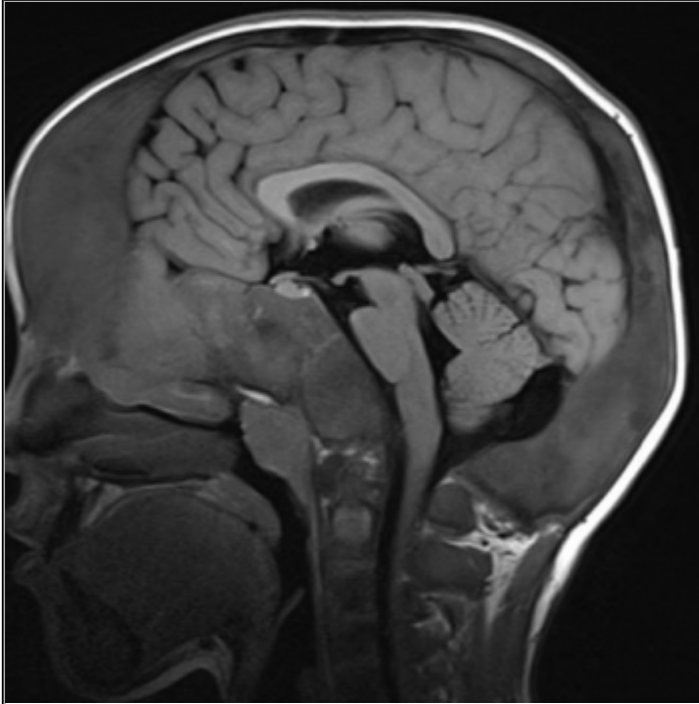
Area of Interest: Musculoskeletal joint;

Imaging Technique: MR;

Procedure: Education;

Special Focus: Congenital;

Figure 9 Magnetic resonance (MR) of the brain

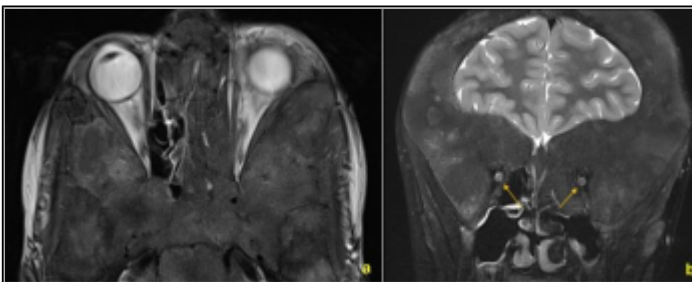


MR of the brain. The mid-sagittal T2- weighted image demonstrate marked thickening of frontal-, occipital-, sphenoid bone and clivus. Intracranial structures are normal.

© Augsburg L, Department of Radiology, UZA, Antwerp, Belgium

Area of Interest: Musculoskeletal bone;
Imaging Technique: MR;
Procedure: Education;
Special Focus: Congenital;

Figure 10 Magnetic resonance (MR) of the brain



MR of the brain. The axial T2 weighted image (a) show narrowing of the orbit. There is no definite compression of the optic nerve (arrow) on the coronal image (b).

© Augsburg L, Department of Radiology, UZA, Antwerp, Belgium

Area of Interest: Musculoskeletal bone;
Imaging Technique: MR;
Procedure: Education;
Special Focus: Congenital;

References

- [1] Rao S, Colaco MP, Desai MP (2003) McCune Albright Syndrome (MCAS): a case series Indian Pediatr. 40(1):29-35.
- [2] Rubio NI, Nader Sh, Brosnan PG (2006) McCune Albright syndrome: case report and review of literature Int J Endocrinol Metab. 4(3):167-75
- [3] Diaz A, Danon M, Crawford J (2007) McCune-Albright syndrome and disorders due to activating mutations of GNAS J Pediatr Endocrinol Metab. 20(8):853-80
- [4] Xavier SP, Ribeiro MC, Sicchieri LG, Brentegani LG, Lacerda SA (2008) Clinical, microscopic, and imaging findings associated to McCune-Albright syndrome: A report of two cases Braz Dent J. 19: 165 - 170.
- [5] Martin-Carreras T, Sanchez E, Bancroft LW (2014) Polyostotic fibrous dysplasia Orthopedics Nov 1. 37(11):722-82
- [6] Medow JE, Agrawal BM, Resnick DK (2007) Polyostotic fibrous dysplasia of the cervical spine: case report and review of the literature Spine J. 7: 712 - 715

Citation

Lukasz Augsburg¹, Filip M. Vanhoenacker^{1, 2, 3}, Jan Gielen¹

1. University Hospital Antwerp, Department of Radiology, University Hospital Antwerp; Wilrijkstraat, 10, B- 2650 Antwerp, Belgium; Email:filip.vanhoenacker@telenet.be

2. AZ Sint-Maarten Duffel-Mechelen, Department of Radiology; Leopoldstraat 2, 2800 Mechelen, Belgium

3. Faculty of Medicine and Health Sciences, Ghent University, Belgium (2017, Mar. 29)

McCune Albright Syndrome (MAS) - polyostotic fibrous dysplasia {Online}

URL: <http://www.eurorad.org/case.php?id=14477>