

Technical University of Denmark



Orientation-Dependent Oxygen Evolution on RuO₂ without Lattice Exchange

Stoerzinger, Kelsey A. ; Diaz-Morales, Oscar ; Kolb, Manuel ; Rao, Reshma R. ; Frydendal, Rasmus; Qiao, Liang ; Wang, Xiao Renshaw ; Halck, Niels Bendtsen; Rossmeis, Jan; Hansen, Heine Anton; Vegge, Tejs; E. L. Stephens, Ifan; Koper, Marc T. M.; Shao-Horn, Yang

Published in:
ACS Energy Letters

Link to article, DOI:
[10.1021/acseenergylett.7b00135](https://doi.org/10.1021/acseenergylett.7b00135)

Publication date:
2017

Document Version
Peer reviewed version

[Link back to DTU Orbit](#)

Citation (APA):
Stoerzinger, K. A., Diaz-Morales, O., Kolb, M., Rao, R. R., Frydendal, R., Qiao, L., ... Shao-Horn, Y. (2017). Orientation-Dependent Oxygen Evolution on RuO₂ without Lattice Exchange. ACS Energy Letters, 2(4), 876-881. DOI: 10.1021/acsenergylett.7b00135

DTU Library
Technical Information Center of Denmark

General rights

Copyright and moral rights for the publications made accessible in the public portal are retained by the authors and/or other copyright owners and it is a condition of accessing publications that users recognise and abide by the legal requirements associated with these rights.

- Users may download and print one copy of any publication from the public portal for the purpose of private study or research.
- You may not further distribute the material or use it for any profit-making activity or commercial gain
- You may freely distribute the URL identifying the publication in the public portal

If you believe that this document breaches copyright please contact us providing details, and we will remove access to the work immediately and investigate your claim.

Orientation-Dependent Oxygen Evolution on RuO₂ without Lattice Exchange

Kelsey A. Stoerzinger,^{1,#,†,} Oscar Diaz-Morales,^{2,#,Δ} Manuel Kolb,³ Reshma R. Rao,³ Rasmus Frydendal,⁴ Liang Qiao,^{5,||} Xiao Renshaw Wang,^{6,‡} Niels Bendtsen Halck,⁷ Jan Rossmeisl,⁸ Heine A. Hansen,⁷ Tejs Vegge,⁷ Ifan E. L. Stephens,^{3,4} Marc T. M. Koper,² Yang Shao-Horn^{1,3,6,*}*

¹Department of Materials Science and Engineering, Massachusetts Institute of Technology,
Cambridge, Massachusetts 02139, United States

²Leiden Institute of Chemistry, Leiden University, PO Box 9502, 2300 RA, Leiden, The
Netherlands

³Department of Mechanical Engineering, Massachusetts Institute of Technology, Cambridge,
Massachusetts 02139, United States

⁴Center for Individual Nanoparticle Functionality, Department of Physics, Technical University
of Denmark, 2800 Kgs. Lyngby, Denmark

⁵Center for Nanophase Materials Sciences, Oak Ridge National Laboratory, 1 Bethel Valley
Road, Oak Ridge, TN, 37831, United States

⁶Research Laboratory of Electronics, Massachusetts Institute of Technology, Cambridge,
Massachusetts 02139, United States

⁷Department of Energy Conversion and Storage, Technical University of Denmark, 2800 Kgs.
Lyngby, Denmark

⁸Department of Chemistry, University of Copenhagen, Universitetsparken 5, 2100 Copenhagen,
Denmark

[†]Current address: Physical and Computational Sciences Directorate, Pacific Northwest National
Laboratory, Richland Washington 99354, United States

^ΔCurrent address: Department of Physics, AlbaNova University Center, Stockholm University,
S-10691 Stockholm, Sweden

^{||}Current address: School of Materials, The University of Manchester, Grosvenor Street,
Manchester, M13 9PL, UK

[‡]Current address: School of Physical and Mathematical Sciences & School of Electrical and
Electronic Engineering, Nanyang Technological University, Singapore 637371

[#]Equal contributors

Corresponding Author

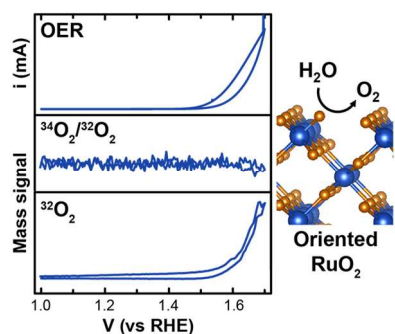
*kelsey.stoerzinger@pnnl.gov; shaohorn@mit.edu

ABSTRACT RuO₂ catalysts exhibit record activities towards the oxygen evolution reaction (OER), which is crucial to enable efficient and sustainable energy storage. Here we examine the RuO₂ OER kinetics on rutile (110), (100), (101), and (111) orientations, finding (100) the most active. We assess the potential involvement of lattice oxygen in the OER mechanism with online

1
2
3 electrochemical mass spectrometry, which showed no evidence of oxygen exchange on these
4 oriented facets in acidic or basic electrolytes. Similar results were obtained for polyoriented
5
6
7
8
9
10
11
12
13
14
15
16
17
18
19
20
21
22
23
24
25
26
27
28
29
30
31
32
33
34
35
36
37
38
39
40
41
42
43
44
45
46
47
48
49
50
51
52
53
54
55
56
57
58
59
60

electrochemical mass spectrometry, which showed no evidence of oxygen exchange on these oriented facets in acidic or basic electrolytes. Similar results were obtained for polyoriented RuO₂ films and particles, in contrast to previous work, suggesting lattice oxygen is not exchanged in catalyzing OER on crystalline RuO₂ surfaces. This hypothesis is supported by the correlation of activity with the number of active Ru-sites calculated by DFT, where more active facets bind oxygen more weakly. This new understanding of the active sites provides a design strategy to enhance the OER activity of RuO₂ nanoparticles by facet engineering.

TOC GRAPHIC



Efficient catalysis of the oxygen evolution reaction (OER) is critical for the storage of renewable energy by hydrogen evolution or CO₂ reduction.¹⁻³ The rutile phase of ruthenium dioxide has remarkable OER activity, serving as a benchmark material for the reaction in either acidic⁴ or alkaline media.⁵⁻⁶ Despite notable experimental and theoretical work in RuO₂-catalyzed OER,⁷⁻⁸ with catalysts ranging from nanoparticles^{5, 9} to single crystals,¹⁰ the mechanism remains unclear.¹¹ Some ambiguities exist about the coordination of ruthenium in RuO₂ active sites and about the role of lattice oxygen in OER. Regarding the Ru active sites, the different coordination of surface Ru atoms on each crystallographic facet bears ramifications on their redox potential,¹² in turn affecting the activation energy of charge-transfer steps in the OER.

1
2
3 With regard to the lattice oxygen involvement in OER, design parameters instead focus on more
4 bulk-like descriptors such as the oxygen 2*p*-band energy level.¹³
5
6

7
8 Four types of mechanisms have been suggested in the literature for the OER in RuO₂ (Figure
9 S1): (1) four concerted proton-electron transfers occurring on a single (undercoordinated Ru)
10 site,⁷ supported by density functional theory (DFT) calculations, (2) a sequence of two
11 electrochemical steps followed by two chemical steps between neighboring Ru sites,¹⁴ due to
12 differences in Tafel relations with tortuosity, (3) decomposition of high valence Ru oxides,¹⁵⁻¹⁶
13 based on thermodynamic parameters, and (4) a mechanism involving the exchange of catalyst's
14 lattice oxygen during the OER from isotopic labeling studies.¹⁷⁻¹⁸ Understanding the nature of
15 the active sites and the involvement of lattice oxygen in the OER is fundamental to reconcile the
16 existing OER mechanism or propose a new one, and this is the key in developing appropriate
17 activity descriptors and parameters for rational design of RuO₂ catalysts.
18
19
20
21
22
23
24
25
26
27
28
29
30

31
32 In this work, we examine the activities and the degree of oxygen exchange on four
33 crystallographic orientations of RuO₂ to probe the nature of active sites for OER, employing ¹⁸O-
34 labelling and OLEMS. The results will be discussed in the light of our recent work showing that
35 the OER activity of rutile RuO₂ (110) is lower than that of RuO₂ (100),⁶ along with the historic
36 studies reporting oxygen exchange during OER on RuO₂ in acidic media.¹⁷⁻¹⁸ We report that for
37 the oriented surfaces of (100), (110), (101), and (111), oxygen exchange was *not* observed to
38 coincide with the OER, regardless of orientation in either acid or base. Moreover, dense sputter-
39 deposited rutile films (annealed at 300 °C) and crystalline RuO₂ nanoparticles of ~50 nm in size
40 did not exhibit notable exchange. The lack of oxygen exchange is supported by DFT results
41 probing the adsorption of oxygen on different orientations, identifying the number of active Ru
42 sites on the four surfaces, which scales with the experimental activity. These findings provide a
43
44
45
46
47
48
49
50
51
52
53
54
55
56
57
58
59
60

1
2
3 design strategy to enhance the OER activity of RuO₂ nanoparticles through facet engineering for
4 practical use.
5
6

7
8 Rutile films of (100), (110), (101), and (111) orientation were grown by pulsed laser
9 deposition (PLD), as reported previously⁶ and detailed in the Experimental Methods
10 (Supplemental Information). The orientation was confirmed by X-ray diffraction (Figure S2). All
11 films are comparably smooth by atomic force microscopy (AFM, Figure S3), with low root-
12 mean-square roughness ~1 nm. Polyoriented films were grown by reactive sputter deposition on
13 Si (Figure S4), as reported previously,¹⁹ and nanoparticles (Figure S5, S6) were purchased
14 commercially.
15
16

17
18 We first establish the uniqueness of film orientations and their dense structure by considering
19 the surface redox behavior and cathodic pseudocapacitive charge (q^*_{cathodic}) measured in Ar-
20 saturated electrolyte.²⁰⁻²¹ The capacitive features differ notably for each orientation in 0.1 M
21 KOH (Figure 1A, see Figure S7 for 0.1 M HClO₄), and scale with the density of
22 undercoordinated Ru-bonds on each projected ideal surface, as shown in Table S1 (Figure 1B,
23 Figure S8). As q^*_{cathodic} has been found to increase directly with surface area,¹⁴ its agreement
24 with that expected from a flat surface leads us to conclude that the oriented thin films are not
25 only smooth but also dense, lacking the porosity and corresponding defects typically associated
26 with polycrystalline films or nanoparticles.
27
28
29
30
31
32
33
34
35
36
37
38
39
40
41
42
43
44
45
46
47
48
49
50
51
52
53
54
55
56
57
58
59
60

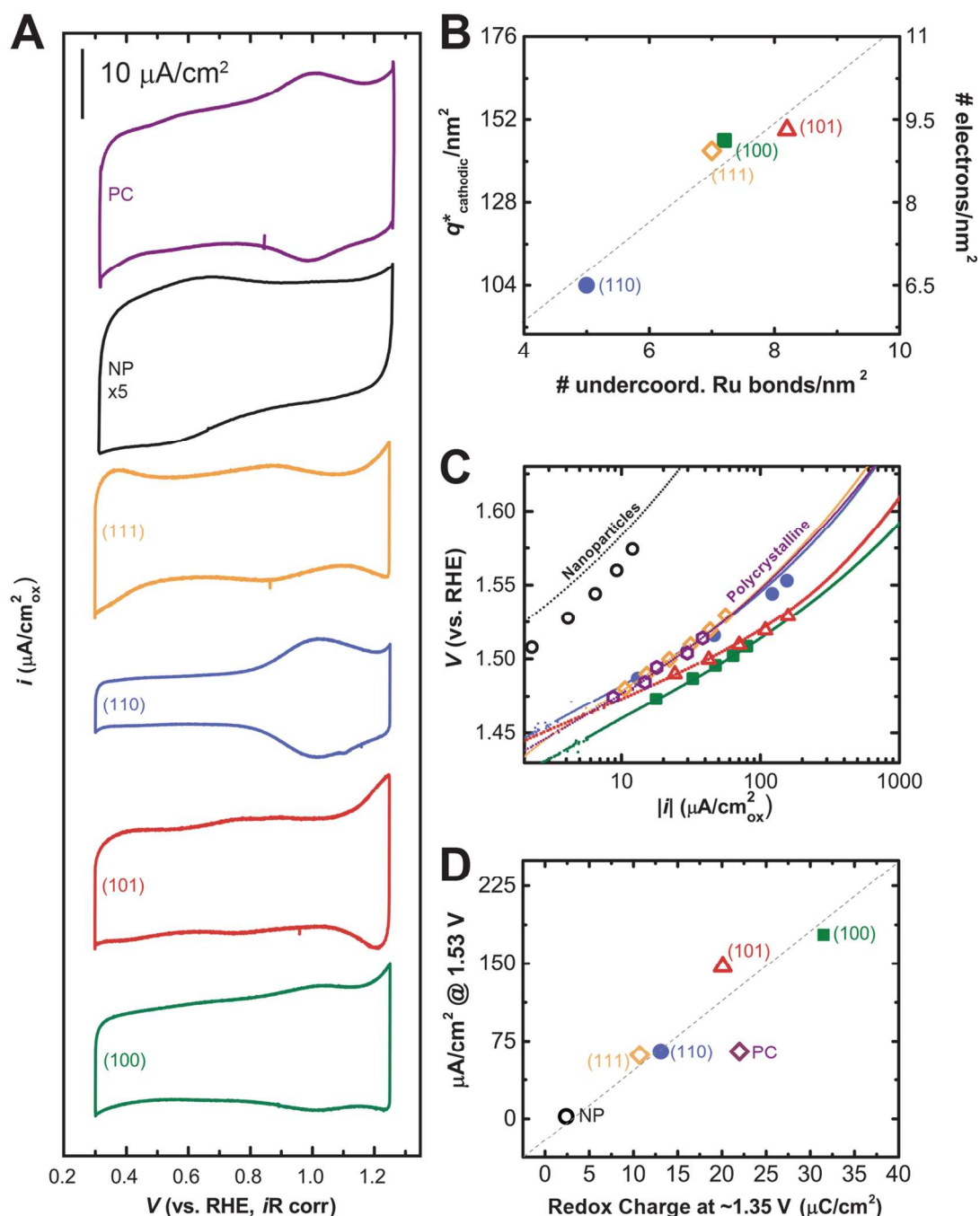


Figure 1. (A) Cyclic voltammetry of RuO_2 of noted orientation in Ar-saturated 0.1 M KOH at 50 mV/s in the voltage window from 0.3 to 1.25 V versus RHE. The cathodic charge in the voltammogram was used to calculate the charge density, q^*_{cathodic} , as suggested by previous work.²¹ The current density from nanoparticles (NP) is multiplied by 5 to show on the same scale. (B) q^*_{cathodic} (and corresponding number of electrons transferred) versus the number of

1
2
3 undercoordinated Ru bonds at the surface counted from the noted crystal facets (Figure S8, Table
4 S1). The dashed line guides the eye for 1:1 correlation. (C) Tafel plot of OER activity in O₂-
5 saturated 0.1 M KOH, measured by cyclic voltammetry at 10 mV/s (averaged forward and back,
6 line) and potentiostatic measurements (constant applied voltage, points). (D) OER activity at
7 1.53 V vs. RHE corresponds to the integrated charge from the Ru redox located at ~1.35 V vs.
8 RHE preceding the onset of OER (Figure S10). (100) and (110) data adapted from Ref. 6.
9
10
11
12
13
14
15
16
17

18 The specific OER activities (normalized by geometrical surface area) of the different crystal
19 orientations differ notably, with (100) being the most active in 0.1 M KOH. The OER activities
20 measured by cyclic voltammetry (CV) and potentiostatic measurements (see Experimental
21 Methods) provide comparable results (Figure 1C). AFM measurements after cycling show
22 negligible changes in surface roughness (Figure S9), pointing to material stability over the ~1
23 hour of measurements. The OER activity scales with the integrated Ru redox peak at ~1.35 V vs.
24 RHE (Figure S10),⁶ preceding the onset of OER, for all orientations.
25
26
27
28
29
30
31
32
33
34

35 We next assess the potential involvement of lattice oxygen by OLEMS measurements.²² The
36 films were held potentiostatically at OER potentials (1.7 V) in 0.1 M KOH or galvanostatically
37 at low current densities in 0.1 M H₂SO₄ or KOH (Figure S11), where the electrolyte was
38 prepared with ¹⁸O-labeled water. After rinsing and replacing the electrolyte with that prepared
39 from DI water (¹⁶O), the masses of evolved oxygen were measured during OER.
40
41
42
43
44
45
46

47 We begin by considering the most stable (110) facet in 0.1 M KOH, on which numerous DFT
48 calculations have considered a reaction mechanism involving adsorption on a single
49 undercoordinated Ru-site,⁷ not involving lattice oxygen. We first performed OER at 10 μA
50 (~1.55 V vs. RHE) in H₂¹⁸O-0.1 M KOH, where the oxide would become 'labeled' by ¹⁸O if
51 lattice oxygen is involved (Figure S11). The electrolyte was then thoroughly rinsed and replaced
52
53
54
55
56
57
58
59
60

with H_2^{16}O -0.1 M KOH, and OER again measured. In concert with the measured oxidation current, notable $^{32}\text{O}_2$ ($^{16}\text{O} + ^{16}\text{O}$) gas evolution was observed (Figure 2A), and negligible formation of $^{34}\text{O}_2$ ($^{18}\text{O} + ^{16}\text{O}$) and of $^{36}\text{O}_2$ ($^{18}\text{O} + ^{18}\text{O}$) was detected, where the ratio of $^{34}\text{O}_2$ to $^{32}\text{O}_2$ detected as a function of applied potential is comparable to that of the natural enrichment of DI water in ^{16}O and ^{18}O isotopes, within experimental uncertainty (Figure 2A bottom panel, Figure S12). Comparable results were obtained by potentiostatic holding at 1.7 V in H_2^{18}O -0.1 M KOH (Figure S12). This observation is in contrast to the detection of oxygen exchange on a polycrystalline gold disk polarized to 2 V (gold's onset for OER)²³ and from oxide powders¹³ of comparable surface area to the RuO_2 electrodes using an identical setup.

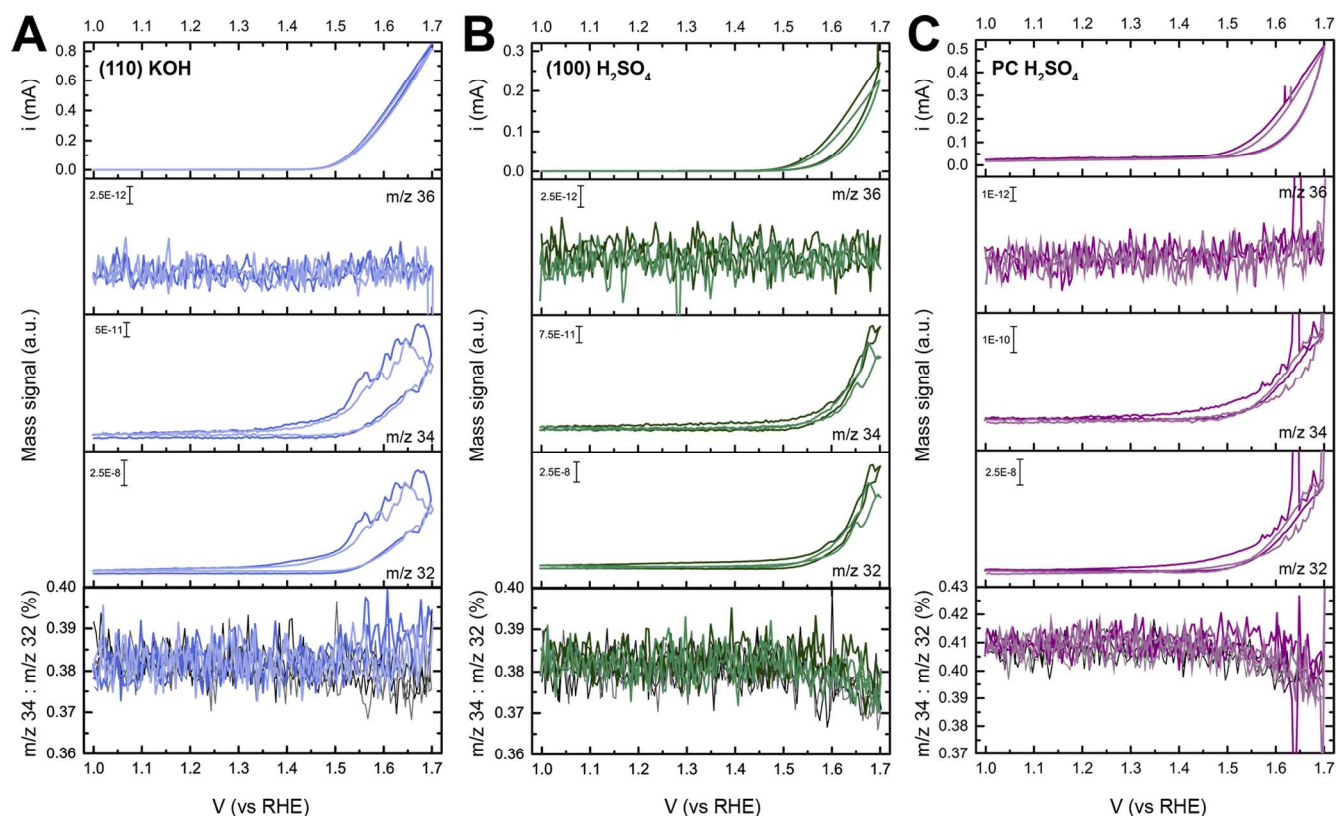


Figure 2. Online electrochemical mass spectrometry (OLEMS) measurements at 2 mV/s (see Experimental Methods for details). Shown is the current as a function of applied voltage, along with the mass signals collected in parallel for $^{36}\text{O}_2$, $^{34}\text{O}_2$ ($^{18}\text{O}^{16}\text{O}$), and $^{32}\text{O}_2$ for a film

1
2
3 galvanostatically polarized in H_2^{18}O to potentially ‘label’ it, measured in H_2^{16}O electrolyte (dark
4 color first sweep, light color second). The ratio of the mass 34 to mass 32 signal, which is
5 independent of applied potential and overtop the same ratio measured after aggressive
6 polarization to remove any exchanged oxygen (black/gray sweeps), indicates any $^{34}\text{O}_2$ arises
7 from background ^{18}O . (A) (110)- RuO_2 in 0.1 M KOH, (B) (100)- RuO_2 in 0.1 M H_2SO_4 , and (C)
8 sputter-deposited polyoriented polycrystalline (PC) RuO_2 in 0.1 M H_2SO_4 .
9
10
11
12
13
14
15
16
17

18 No involvement of lattice oxygen exchange was detected during OER in 0.1 M KOH on more
19 active (100) (Figure S13-14) or (101) (Figure S15-16), or more undercoordinated (111) (Figure
20 S17-18) by either galvanostatic or potentiostatic labeling approaches. Moreover, we performed
21 OLEMS in 0.1 M H_2SO_4 , where these oriented films also do not exhibit oxygen exchange during
22 OER (Figures 2B, S14, S16, S18). The lack of oxygen exchange on these oriented RuO_2 films in
23 either basic or acidic environments in this study is in contrast to the observation of lattice
24 involvement for polycrystalline RuO_2 RF sputtered onto a membrane¹⁷ and nanocrystalline
25 particles;¹⁸ the discrepancy is not understood. Here, we postulate that the involvement of oxygen
26 exchange in OER is not associated with rutile RuO_2 , but potentially rather with RuO_2 -based
27 amorphous or nanocrystalline phases with undercoordinated edge-sites presented in these
28 previous studies.¹⁷⁻¹⁸ This hypothesis is supported by lack of oxygen exchange (Figure 2C,
29 Figure S19) during OER on polyoriented, polycrystalline RuO_2 (prepared by reactive sputter
30 deposition at 300 °C in 3 mTorr of 5:2 Ar: O_2) in acid,¹⁹ having comparable charge associated
31 with the peak at ~1.35 V vs. RHE (Figure 1D) and OER activity (Figure 1D) comparable to
32 oriented surfaces. Moreover, no oxygen exchange was detected on rutile RuO_2 nanoparticles
33 (Figure S20) of ~50 nm in size (Figure S6), having a slightly lower activity and a lower charge
34
35
36
37
38
39
40
41
42
43
44
45
46
47
48
49
50
51
52
53
54
55
56
57
58
59
60

1
2
3 associated with the redox peak at ~ 1.35 V (Figure 1D) normalized to Brunauer–Emmett–Teller
4 (BET) surface area.
5
6

7
8 In the context of previous work, these new findings suggest that lattice oxygen is involved in a
9 secondary mechanism only in less-crystalline ruthenium oxide or at low-coordinated
10 nanoparticle surfaces with large surface area to bulk ratios. This difference suggests the
11 importance of defect sites or other variations in surface crystallinity influenced by synthesis
12 method.²⁴ Furthermore, the geometry of the RF-sputtered RuO₂ electrode in previous studies¹⁷ is
13 likely characterized by a degree of surface roughness and porosity due to its deposition on a
14 polymer membrane, which can potentially trap isotopically labelled water during the exchange
15 experiment, convoluting results. The exchange of lattice oxygen may be possible in low-
16 coordinated surface sites of less-crystalline but yet electrochemically active catalysts having
17 nominal “RuO₂” stoichiometry, with such a difference in reaction mechanism likely bearing
18 ramifications on stability as well. Fortunately, such exchange is not necessary to achieve high
19 catalytic activity in oriented films.
20
21
22
23
24
25
26
27
28
29
30
31
32
33
34
35

36 To help better quantify the number of active sites on the surface, we performed DFT
37 calculations (see Experimental Methods) on the four experimentally studied RuO₂ facets. We
38 assume that these surfaces do not undergo reconstruction; thus the surface orientation is
39 commensurate with that of the overall film. To this end, we calculated the oxygen adsorption
40 energies for sites linked to the different types of Ru atoms on the surface. We observe the
41 possibility to adsorb in various positions onto the different adsorption sites with varied energies.
42
43 However, we find a common trend in the onset of the transition of the stoichiometric surface to
44 the oxidized surface. We observe the Gibbs free energies per O atom for the oxygen adsorption
45 on the Ru-sites labeled as ‘active’ undercoordinated sites to be 1.90 eV on the (100) surface, 2.01
46
47
48
49
50
51
52
53
54
55
56
57
58
59
60

1
2
3 eV for the (101) surface, 1.77 eV for the active site on the (110) surface and 1.59 eV for the
4
5 (111) surface. Here, the adsorption energy is defined as the last, sequential addition of oxygen,
6
7 which stabilizes the surface with the highest oxygen coverage at the pre-OER potentials under
8
9 investigation here. Greater Gibbs free energies of adsorption correspond to higher potentials for
10
11 the Ru redox peak preceding the onset of OER (Figure S10), and higher OER activity (Figure 3).
12
13 The relative stability of the surfaces are found to be in good agreement with previous
14
15 computational work on RuO₂ surfaces and nanoparticles,^{12, 25} but with the interesting addition of
16
17 a new oxygen rich termination on the open (111) surface, where the active Ru-site is
18
19 tetrahedrally coordinated to oxygen, see Figure 3D and S21.
20
21
22
23

24
25 The additional oxygen atoms that cause the transitions with similar adsorption energies as the
26
27 active coordinatively undersaturated (CUS) site on the (110) surface are shown in Figures 3A-D.
28
29 For the (100) (Figure 3A) and (101) (Figure 3B) facets, we find that all surface Ru atoms are
30
31 active (i.e. have similar oxygen adsorption energy), while for the (110) surface (Figure 3C) only
32
33 the CUS sites are active and for the (111) facet (Figure 3D) only every third surface Ru atom is
34
35 active. From this, we observe a trend for the density of the undercoordinated Ru sites, which is
36
37 shown in Figure 3E.
38
39
40
41
42
43
44
45
46
47
48
49
50
51
52
53
54
55
56
57
58
59
60

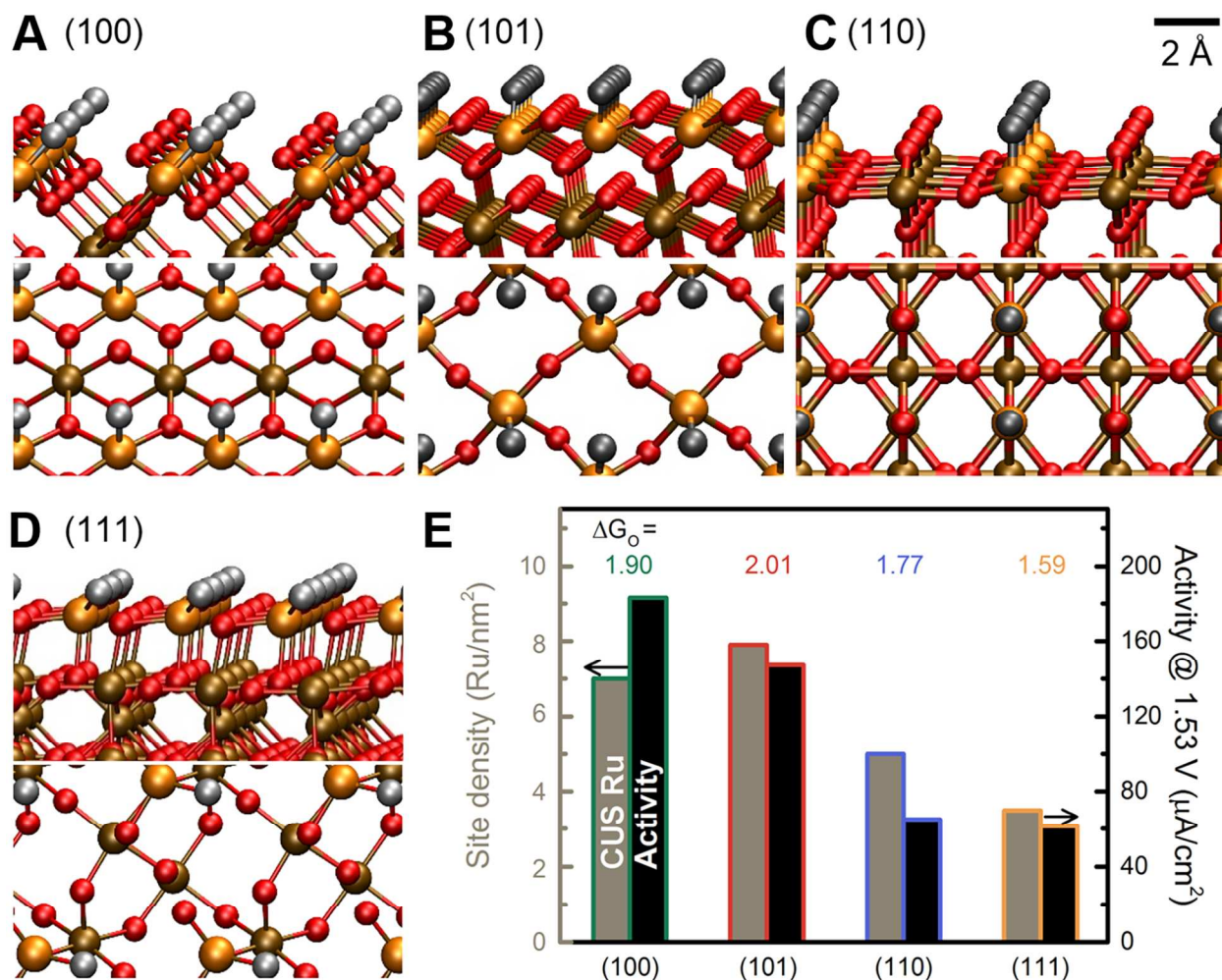


Figure 3. (A-D) RuO₂ surfaces viewed from the side (top) and from above (bottom), where O atoms are in red, inactive Ru atoms are in brown, and active undercoordinated sites are marked with a larger sphere in gold with silver atoms marking the location of the oxygen atom adsorbed on the active site. All images are on the same scale. (E) The OER activity at 1.53 V vs. RHE (right axis, black) scales with the number of active undercoordinated sites per area from DFT calculations (left axis, gray) for the four studied RuO₂ orientations. A weaker Gibbs free energies per O atom (ΔG_{O} , in eV) also corresponds to higher activity.

Given the experimental observation that high OER activity correlates with greater Ru redox preceding OER (Figure 1D), we hypothesize that these undercoordinated Ru are active for OER.

1
2
3 Indeed, the OER activity correlates not with the overall Ru density on each facet, but with the
4
5 DFT-calculated density of undercoordinated Ru (Figure 3E), where the most active (100) and
6
7 (101) surfaces have the highest density of undercoordinated Ru and also bind O the weakest.
8
9 This clearly indicates the involvement of active Ru sites in the reaction mechanism, which
10
11 involves their ability to be oxidized and reduced. Comparison of the charge associated with the
12
13 redox feature preceding the onset of OER (Figure 1D, S10) with the density of active Ru atoms
14
15 on each orientation indicates that the (100) surface also has the highest utilization of surface Ru
16
17 atoms (Table S2). Our findings, where RuO₂ does not exhibit oxygen exchange and activity
18
19 trends with the number of active Ru sites and their O binding strength, supports previously
20
21 proposed mechanisms involving an undercoordinated active Ru site,⁷ however we cannot assess
22
23 the role of lateral interactions^{24, 26} or active valence state at this time. Ongoing work concerns the
24
25 balance between proton-electron transfer and pH effects in the reaction mechanism. The
26
27 correlation of activity with metal sites and not the exposed lattice oxygen density on different
28
29 crystallographic facets suggests that active, stable catalysts should maximize the exposure of
30
31 (100) and (101) facets in engineered nanoparticles.
32
33
34
35
36
37

38
39 In this study, we report that rutile RuO₂ (100) and (101) surfaces are more active for the
40
41 oxygen evolution reaction (OER) than their (110) and (111) counterparts in alkaline solution,
42
43 where activity scales with Ru oxidation. Oxygen isotope studies employing OLEMS do not
44
45 evidence appreciable oxygen exchange during the OER on well-crystallized, oriented thin films
46
47 in either acidic or basic media. Furthermore, measurements of dense polycrystalline films and
48
49 commercial nanoparticles also suggest no oxygen exchange, in contrast to previous studies.¹⁷⁻¹⁸
50
51 DFT calculations suggest undercoordinated Ru atoms on crystallized facets are active sites for
52
53 the OER, the density of which correlates with activity on the four RuO₂ orientations. Our work
54
55
56
57
58
59
60

1
2
3 highlights the importance of understanding the surface atomic structure of oxides to tune
4
5 catalytic activity and possibly the reaction mechanism, and such work can open up new design
6
7 strategies to engineer nanoparticles with enhanced OER activity.
8
9

10
11
12 **Supporting Information.** Experimental methods, additional characterization, electrochemical
13 testing, and OLEMS. The following files are available free of charge.
14
15

16
17
18 Supporting information (PDF)
19

20 21 22 23 AUTHOR INFORMATION

24 25 26 Notes

27
28 The authors declare no competing financial interests.
29
30

31 32 33 ACKNOWLEDGEMENT

34 We thank Binghong Han for TEM characterization of RuO₂ nanoparticles. IELS gratefully
35 acknowledges the MIT award of the Peabody Visiting Associate Professorship. The film growth
36 and structural characterization at ORNL were supported by the U.S. Department of Energy,
37 Office of Science, Basic Energy Sciences, Materials Sciences and Engineering Division. This
38 work is supported in part by the Skoltech-MIT Center for Electrochemical Energy, and the
39 Cooperative Agreement between the Masdar Institute, Abu Dhabi, UAE and MIT
40 (02/MI/MIT/CP/11/07633/GEN/G/00). This work is also supported in part by the Netherlands
41 Organization for Scientific Research (NWO) within the research programme of BioSolar Cells,
42 co-financed by the Dutch Ministry of Economic Affairs, Agriculture and Innovation, as well as
43 The Velux Foundations through the research center V-Sustain (grant 9455).
44
45
46
47
48
49
50
51
52
53
54
55
56
57
58
59
60

REFERENCES

- (1) Trasatti, S. Electrocatalysis by Oxides — Attempt at a Unifying Approach. *J. Electroanal. Chem. Interfacial Electrochem.* **1980**, *111*, 125-131.
- (2) Duan, L.; Bozoglian, F.; Mandal, S.; Stewart, B.; Privalov, T.; Llobet, A.; Sun, L. A Molecular Ruthenium Catalyst with Water-oxidation Activity Comparable to that of Photosystem II. *Nat. Chem.* **2012**, *4*, 418-423.
- (3) Greeley, J.; Markovic, N. M. The road from animal electricity to green energy: combining experiment and theory in electrocatalysis. *Energy Environ. Sci.* **2012**, *5*, 9246-9256.
- (4) Trasatti, S. Electrocatalysis in the Anodic Evolution of Oxygen and Chlorine. *Electrochim. Acta* **1984**, *29*, 1503-1512.
- (5) Lee, Y.; Suntivich, J.; May, K. J.; Perry, E. E.; Shao-Horn, Y. Synthesis and Activities of Rutile IrO₂ and RuO₂ Nanoparticles for Oxygen Evolution in Acid and Alkaline Solutions. *J. Phys. Chem. Lett.* **2012**, *3*, 399-404.
- (6) Stoerzinger, K. A.; Qiao, L.; Biegalski, M. D.; Shao-Horn, Y. Orientation-Dependent Oxygen Evolution Activities of Rutile IrO₂ and RuO₂. *J. Phys. Chem. Lett.* **2014**, *5*, 1636-1641.
- (7) Rossmeisl, J.; Qu, Z. W.; Zhu, H.; Kroes, G. J.; Nørskov, J. K. Electrolysis of Water on Oxide Surfaces. *J. Electroanal. Chem.* **2007**, *607*, 83-89.
- (8) Man, I. C.; Su, H.-Y.; Calle-Vallejo, F.; Hansen, H. A.; Martínez, J. I.; Inoglu, N. G.; Kitchin, J.; Jaramillo, T. F.; Nørskov, J. K.; Rossmeisl, J. Universality in Oxygen Evolution Electrocatalysis on Oxide Surfaces. *ChemCatChem* **2011**, *3*, 1159-1165.
- (9) Nguyen, T. D.; Scherer, G. G.; Xu, Z. J. A Facile Synthesis of Size-Controllable IrO₂ and RuO₂ Nanoparticles for the Oxygen Evolution Reaction. *Electrocatalysis* **2016**, *7*, 420-427.
- (10) Castelli, P.; Trasatti, S.; Pollak, F. H.; O'Grady, W. E. Single Crystals as Model Electrocatalysts: Oxygen Evolution on RuO₂ (110). *J. Electroanal. Chem. Interfacial Electrochem.* **1986**, *210*, 189-194.
- (11) Reier, T.; Nong, H. N.; Teschner, D.; Schlögl, R.; Strasser, P. Electrocatalytic Oxygen Evolution Reaction in Acidic Environments – Reaction Mechanisms and Catalysts. *Adv. Energy Mater.* **2017**, *7*, 1601275.
- (12) Wang, T.; Jelic, J.; Rosenthal, D.; Reuter, K. Exploring Pretreatment–Morphology Relationships: Ab Initio Wulff Construction for RuO₂ Nanoparticles under Oxidising Conditions. *ChemCatChem* **2013**, *5*, 3398-3403.
- (13) Grimaud, A.; Diaz-Morales, O.; Han, B.; Hong, W. T.; Lee, Y.-L.; Giordano, L.; Stoerzinger, K. A.; Koper, M. T. M.; Shao-Horn, Y. Activating lattice oxygen redox reactions in metal oxides to catalyze oxygen evolution. *Nat. Chem.* **2016**, DOI: 10.1038/nchem.2695.
- (14) Lodi, G.; Sivieri, E.; Battisti, A.; Trasatti, S. Ruthenium dioxide-based film electrodes. *J. Appl. Electrochem.* **1978**, *8*, 135-143.
- (15) Lyons, M. E. G.; Burke, L. D. Mechanism of Oxygen Reactions at Porous Oxide Electrodes. Part 1.- Oxygen Evolution at RuO₂ and Ru_xSn_{1-x}O₂ Electrodes in Alkaline Solution Under Vigorous Electrolysis Conditions. *J. Chem. Soc., Faraday Trans. 1* **1987**, *83*, 299-321.
- (16) Lyons, M. E. G.; Floquet, S. Mechanism of Oxygen Reactions at Porous Oxide Electrodes. Part 2- Oxygen Evolution at RuO₂, IrO₂ and Ir_xRu_{1-x}O₂ Electrodes in Aqueous Acid and Alkaline Solution. *Phys. Chem. Chem. Phys.* **2011**, *13*, 5314-5335.

- 1
2
3
4
5
6
7
8
9
10
11
12
13
14
15
16
17
18
19
20
21
22
23
24
25
26
27
28
29
30
31
32
33
34
35
36
37
38
39
40
41
42
43
44
45
46
47
48
49
50
51
52
53
54
55
56
57
58
59
60
- (17) Wohlfahrt-Mehrens, M.; Heitbaum, J. Oxygen evolution on Ru and RuO₂ electrodes studied using isotope labelling and on-line mass spectrometry. *J. Electroanal. Chem. Interfacial Electrochem.* **1987**, *237*, 251-260.
- (18) Macounova, K.; Makarova, M.; Krtil, P. Oxygen evolution on nanocrystalline RuO₂ and Ru_{0.9}Ni_{0.1}O₂₋₆ electrodes – DEMS approach to reaction mechanism determination. *Electrochem. Commun.* **2009**, *11*, 1865-1868.
- (19) Frydendal, R.; Paoli, E. A.; Knudsen, B. P.; Wickman, B.; Malacrida, P.; Stephens, I. E. L.; Chorkendorff, I. Benchmarking the Stability of Oxygen Evolution Reaction Catalysts: The Importance of Monitoring Mass Losses. *ChemElectroChem* **2014**, *1*, 2075-2081.
- (20) Guerrini, E.; Chen, H.; Trasatti, S. Oxygen Evolution on Aged IrO_x /Ti Electrodes in Alkaline Solutions. *J. Solid State Electrochem.* **2007**, *11*, 939-945.
- (21) Burke, L. D.; Murphy, O. J. Cyclic Voltammetry as a Technique for Determining the Surface Area of RuO₂ Electrodes. *J. Electroanal. Chem. Interfacial Electrochem.* **1979**, *96*, 19-27.
- (22) Wonders, A. H.; Housmans, T. H. M.; Rosca, V.; Koper, M. T. M. On-line mass spectrometry system for measurements at single-crystal electrodes in hanging meniscus configuration. *J. Appl. Electrochem.* **2006**, *36*, 1215-1221.
- (23) Diaz-Morales, O.; Calle-Vallejo, F.; de Munck, C.; Koper, M. T. M. Electrochemical water splitting by gold: evidence for an oxide decomposition mechanism. *Chem. Sci.* **2013**, *4*, 2334-2343.
- (24) Exner, K. S.; Anton, J.; Jacob, T.; Over, H. Ligand Effects and Their Impact on Electrocatalytic Processes Exemplified with the Oxygen Evolution Reaction (OER) on RuO₂(110). *ChemElectroChem* **2015**, *2*, 707-713.
- (25) Wang, T.; Reuter, K. Structure sensitivity in oxide catalysis: First-principles kinetic Monte Carlo simulations for CO oxidation at RuO₂(111). *J. Chem. Phys.* **2015**, *143*, 204702.
- (26) Halck, N. B.; Petrykin, V.; Krtil, P.; Rossmeisl, J. Beyond the volcano limitations in electrocatalysis - oxygen evolution reaction. *Phys. Chem. Chem. Phys.* **2014**, *16*, 13682-13688.

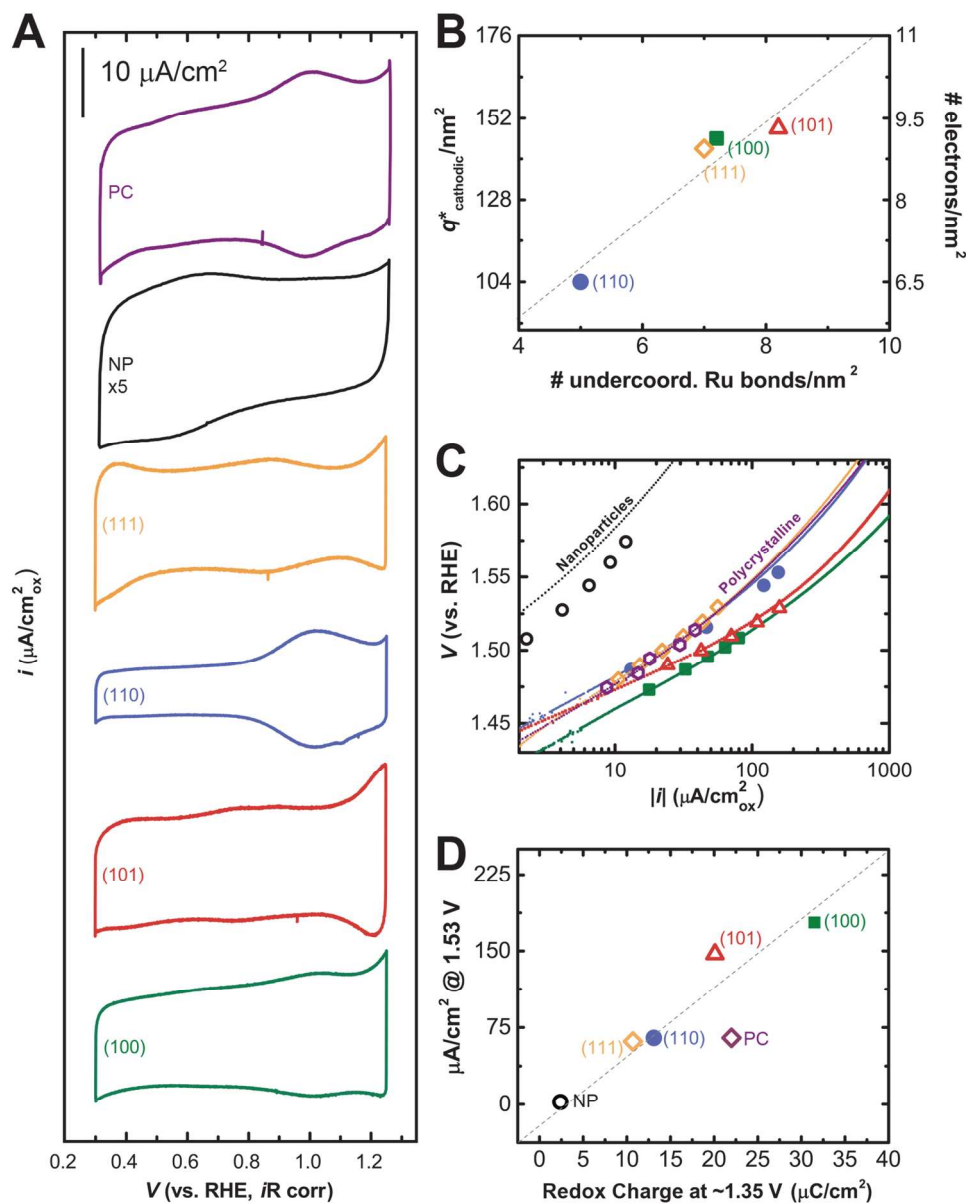


Figure 1. (A) Cyclic voltammetry of RuO_2 of noted orientation in Ar-saturated 0.1 M KOH at 50 mV/s in the voltage window from 0.3 to 1.25 V versus RHE. The cathodic charge in the voltammogram was used to calculate the charge density, q^*_{cathodic} , as suggested by previous work.²¹ The current density from nanoparticles (NP) is multiplied by 5 to show on the same scale. (B) q^*_{cathodic} (and corresponding number of electrons transferred) versus the number of undercoordinated Ru bonds at the surface counted from the noted crystal facets (Figure S8, Table S1). The dashed line guides the eye for 1:1 correlation. (C) Tafel plot of OER activity in O_2 -saturated 0.1 M KOH, measured by cyclic voltammetry at 10 mV/s (averaged forward and back, line) and potentiostatic measurements (constant applied voltage, points). (D) OER activity at 1.53 V vs. RHE corresponds to the integrated charge from the Ru redox located at ~ 1.35 V vs. RHE preceding the onset of OER (Figure S10). (100) and (110) data adapted from Ref. 6.

Figure 1

144x178mm (300 x 300 DPI)

1
2
3
4
5
6
7
8
9
10
11
12
13
14
15
16
17
18
19
20
21
22
23
24
25
26
27
28
29
30
31
32
33
34
35
36
37
38
39
40
41
42
43
44
45
46
47
48
49
50
51
52
53
54
55
56
57
58
59
60

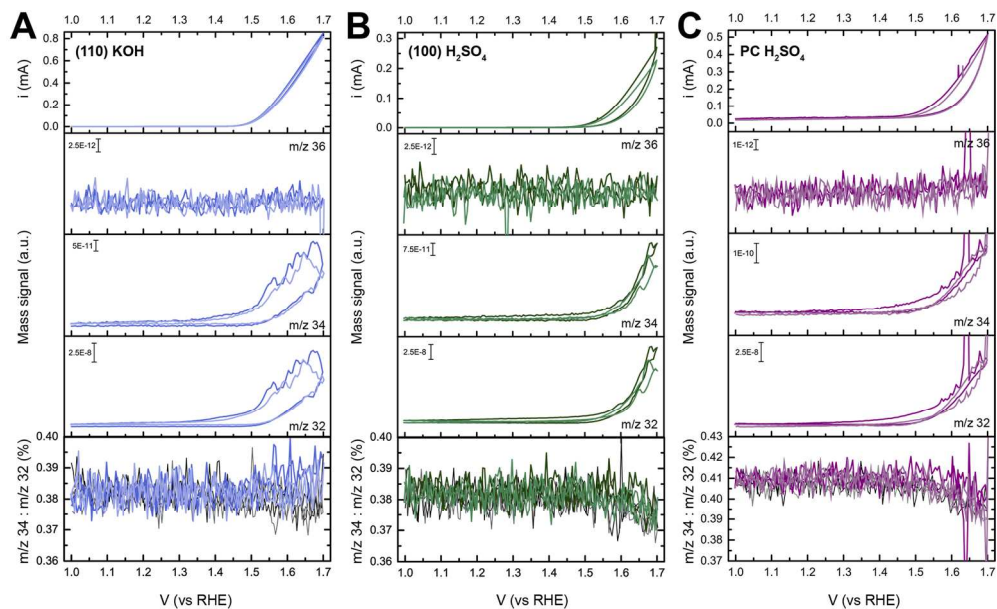


Figure 2. Online electrochemical mass spectrometry (OLEMS) measurements at 2 mV/s (see Experimental Methods for details). Shown is the current as a function of applied voltage, along with the mass signals collected in parallel for $^{36}\text{O}_2$, $^{34}\text{O}_2$ ($^{18}\text{O}^{16}\text{O}$), and $^{32}\text{O}_2$ for a film galvanostatically polarized in H_2^{18}O to potentially 'label' it, measured in H_2^{16}O electrolyte (dark color first sweep, light color second). The ratio of the mass 34 to mass 32 signal, which is independent of applied potential and overlap the same ratio measured after aggressive polarization to remove any exchanged oxygen (black/gray sweeps), indicates any $^{34}\text{O}_2$ arises from background ^{18}O . (A) (110)- RuO_2 in 0.1 M KOH, (B) (100)- RuO_2 in 0.1 M H_2SO_4 , and (C) sputter-deposited polyoriented polycrystalline (PC) RuO_2 in 0.1 M H_2SO_4 .

Figure 2

177x108mm (300 x 300 DPI)

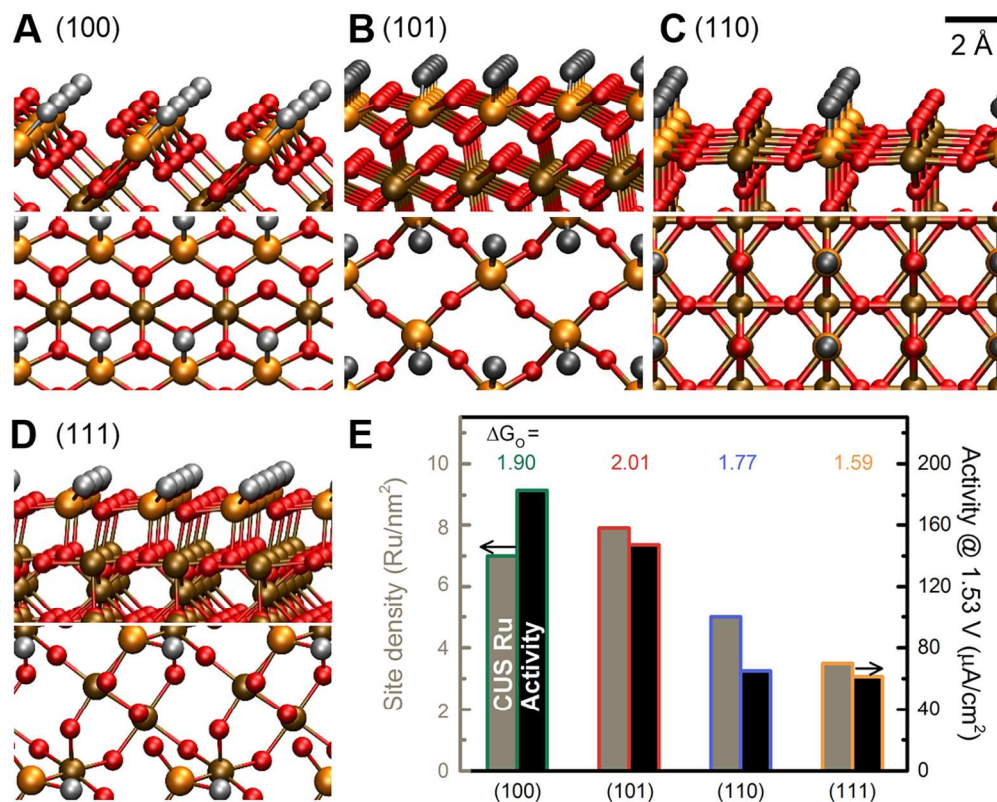


Figure 3. (A-D) RuO₂ surfaces viewed from the side (top) and from above (bottom), where O-atoms are in red, inactive Ru atoms are in brown, and active undercoordinated sites are marked with a larger sphere in gold with silver atoms marking the location of the oxygen atom adsorbed on the active site. All images are on the same scale. (E) The OER activity at 1.53 V vs. RHE (right axis, black) scales with the number of active undercoordinated sites per area from DFT calculations (left axis, gray) for the four studied RuO₂ orientations. A weaker Gibbs free energies per O atom (ΔG_{O} , in eV) also corresponds to higher activity.

Figure 3

165x132mm (300 x 300 DPI)