

Technical University of Denmark



## Numerical simulations of blob dynamics with finite ion temperature

Nielsen, Anders Henry; Rasmussen, Jens Juul; Madsen, Jens; Xu, G.S.; Naulin, Volker; Coelho, R.; Olsen, Jeppe Miki Busk; Magnussen, Michael Løiten; Hansen, S.K.; Yan, N.; Tophøj, Laust Emil Hjerrild; Wan, B.N.

*Publication date:*  
2016

*Document Version*  
Publisher's PDF, also known as Version of record

[Link back to DTU Orbit](#)

*Citation (APA):*

Nielsen, A. H., Rasmussen, J. J., Madsen, J., Xu, G. S., Naulin, V., Coelho, R., ... Wan, B. N. (2016). Numerical simulations of blob dynamics with finite ion temperature. Abstract from 43rd EPS Conference on Plasma Physics, Leuven, Belgium.

**DTU Library**  
Technical Information Center of Denmark

---

**General rights**

Copyright and moral rights for the publications made accessible in the public portal are retained by the authors and/or other copyright owners and it is a condition of accessing publications that users recognise and abide by the legal requirements associated with these rights.

- Users may download and print one copy of any publication from the public portal for the purpose of private study or research.
- You may not further distribute the material or use it for any profit-making activity or commercial gain
- You may freely distribute the URL identifying the publication in the public portal

If you believe that this document breaches copyright please contact us providing details, and we will remove access to the work immediately and investigate your claim.

## Numerical simulations of blob dynamics with finite ion temperature

A. H. Nielsen<sup>1</sup>, J. Juul Rasmussen<sup>1</sup>, J. Madsen<sup>1</sup>, G.S. Xu<sup>2</sup>, V. Naulin<sup>1</sup>, R. Coelho<sup>3</sup>,  
J.M.B. Olsen<sup>1</sup>, M. Løiten<sup>1</sup>, S. K. Hansen<sup>1</sup>, N. Yan<sup>2</sup>, L. Tophøj<sup>1</sup> and B.N. Wan<sup>2</sup>

<sup>1</sup> *Department of Physics, DTU, Kgs.-Lyngby, Denmark*

<sup>2</sup> *Institute of Plasma Physics, Hefei, People's Republic of China*

<sup>3</sup> *Instituto de Plasmas e Fusão Nuclear, Lisboa, Portugal*

In this paper we set out to numerically simulate the turbulent transport in the edge and scrape off layer (SOL) regions on the outboard midplane of the medium sized tokamak such as ASDEX Upgrade or EAST. We study the perpendicular particle and energy transport across the Last Closed Flux Surface (LCFS) using the 2-dimensional numerical model, HESEL[1]. HESEL is an energy conserving four-field model based on the Braginskii equations governing the dynamics of a quasi-neutral, simple plasma. It describes interchange-driven, low-frequency turbulence in a plane perpendicular to the magnetic field at the outboard midplane. The HESEL model includes effects of drift waves on closed field lines, the transition from the confined region to the region of open field lines (SOL) and the full development of the profiles across the LCFS. HESEL is also fully compatible with scientific workflow designed and engineered in Kepler, which in this paper shortly will be discussed.

In Fig. 1 we show a snapshot of 2 blobs being ejected from the edge area. In such processes particles and energy are transported very effectively and intermittently far into the SOL. One observes an asymmetry between the temperatures of electron and ion, a result of difference dissipation rates parallel and perpendicular to the magnetic field lines.

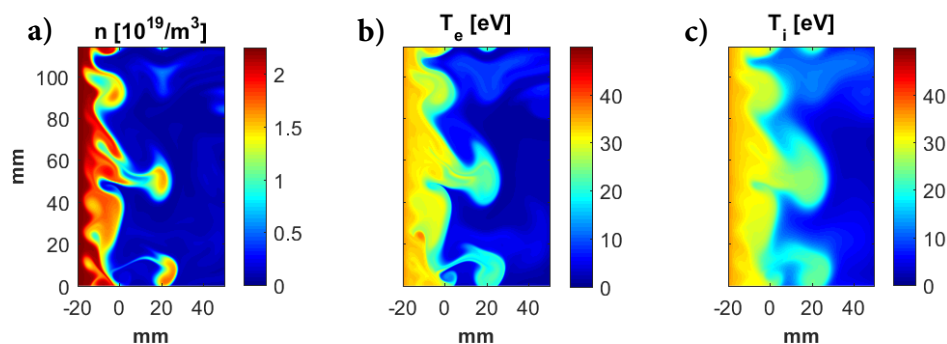


Figure 1: Snapshot of a HESEL simulation a) density, b) electron temperatures, and c) ion temperature.

### References

- [1] A.H. Nielsen, *et al*, Physics Letters A **379** 3097–3101 (2015)