

## Exploration of the phase diagram of liquid water in the low-temperature metastable region using synthetic fluid inclusions

Qiu, Chen; Krüger, Yves; Wilke, Max; Marti, Dominik; Rika, Jaroslav; Frenz, Martin

*Published in:*  
Physical Chemistry Chemical Physics

*Link to article, DOI:*  
[10.1039/C6CP04250C](https://doi.org/10.1039/C6CP04250C)

*Publication date:*  
2016

*Document Version*  
Peer reviewed version

[Link back to DTU Orbit](#)

*Citation (APA):*  
Qiu, C., Krüger, Y., Wilke, M., Marti, D., Rika, J., & Frenz, M. (2016). Exploration of the phase diagram of liquid water in the low-temperature metastable region using synthetic fluid inclusions. *Physical Chemistry Chemical Physics*, 18(40), 28227-28241. DOI: 10.1039/C6CP04250C

## DTU Library

Technical Information Center of Denmark

---

### General rights

Copyright and moral rights for the publications made accessible in the public portal are retained by the authors and/or other copyright owners and it is a condition of accessing publications that users recognise and abide by the legal requirements associated with these rights.

- Users may download and print one copy of any publication from the public portal for the purpose of private study or research.
- You may not further distribute the material or use it for any profit-making activity or commercial gain
- You may freely distribute the URL identifying the publication in the public portal

If you believe that this document breaches copyright please contact us providing details, and we will remove access to the work immediately and investigate your claim.

# PCCP

Accepted Manuscript



This article can be cited before page numbers have been issued, to do this please use: C. Qiu, Y. Krüger, M. Wilke, D. Marti, J. Rika and M. Frenz, *Phys. Chem. Chem. Phys.*, 2016, DOI: 10.1039/C6CP04250C.



This is an *Accepted Manuscript*, which has been through the Royal Society of Chemistry peer review process and has been accepted for publication.

*Accepted Manuscripts* are published online shortly after acceptance, before technical editing, formatting and proof reading. Using this free service, authors can make their results available to the community, in citable form, before we publish the edited article. We will replace this *Accepted Manuscript* with the edited and formatted *Advance Article* as soon as it is available.

You can find more information about *Accepted Manuscripts* in the [Information for Authors](#).

Please note that technical editing may introduce minor changes to the text and/or graphics, which may alter content. The journal's standard [Terms & Conditions](#) and the [Ethical guidelines](#) still apply. In no event shall the Royal Society of Chemistry be held responsible for any errors or omissions in this *Accepted Manuscript* or any consequences arising from the use of any information it contains.

## Exploration of the phase diagram of liquid water in the low-temperature metastable region using synthetic fluid inclusions†

C. Qiu,<sup>a</sup> Y. Krüger,<sup>ad</sup> M. Wilke,<sup>be</sup> D. Marti,<sup>ac</sup> J. Rička,<sup>a</sup> and M. Frenz<sup>a</sup>

Received 00th January 20xx,  
Accepted 00th January 20xx

DOI: 10.1039/x0xx00000x

www.rsc.org/

We present new experimental data of the low-temperature metastable region of liquid water derived from high-density synthetic fluid inclusions (996–916 kg/m<sup>3</sup>) in quartz. Microthermometric measurements include: i) Prograde (upon heating) and retrograde (upon cooling) liquid-vapour homogenisation. We used single ultrashort laser pulses to stimulate vapour bubble nucleation in initially monophasic liquid inclusions. Water densities were calculated based on prograde homogenisation temperatures using the IAPWS-95 formulation. We found retrograde liquid-vapour homogenisation temperatures in excellent agreement with IAPWS-95. ii) Retrograde ice nucleation. Raman spectroscopy was used to determine the nucleation of ice in absence of the vapour bubble. Our ice nucleation data in the doubly metastable region are inconsistent with the low-temperature trend of the spinodal predicted by IAPWS-95, as liquid water with a density of 0.921 kg/m<sup>3</sup> remains in a homogeneous state during cooling down to the temperature of –30.5 °C, where it is transformed into ice whose density corresponds to zero pressure. iii) Ice melting. Ice melting temperatures of up to 6.8 °C were measured in absence of the vapour bubble, i.e. in the negative pressure region. iv) Spontaneous retrograde and, for the first time, prograde vapour bubble nucleation. Prograde bubble nucleation occurred upon heating at temperatures above ice melting. The occurrence of prograde and retrograde vapour bubble nucleation in the same inclusions indicates a maximum of the bubble nucleation curve in the  $\rho$ – $T$  plane at around 40 °C.

The new experimental data represent valuable benchmarks to evaluate and further improve theoretical models describing the  $p$ – $V$ – $T$  properties of metastable water in the low-temperature region.

### 1. Introduction

The present work is a contribution to the research aimed at the understanding of the anomalies of water, in particular those observed in supercooled metastable water at temperatures below the ice-liquid coexistence curve.<sup>1,2</sup> For example, the isothermal compressibility  $\kappa_T$  exhibits a minimum at 46 °C and increases upon further lowering the temperature, instead of monotonically decreasing as in “normal” liquids. In the supercooled region the increase becomes quite rapid and  $\kappa_T$  may even diverge at around 228 K (–45 °C).<sup>3</sup> (Unfortunately this would happen in the experimentally inaccessible region below the ice nucleation limit.) Several scenarios have been proposed to explain the strange behaviour of the thermodynamic response functions (see e.g. the Review by Pallares et al<sup>4</sup>), the first was the so called ‘Stability Limit Conjecture’ of Speedy:<sup>5</sup>

Speedy and Angell<sup>3</sup> observed that the behaviour of the response functions in the supercooled region resembles the behaviour of  $\kappa_T$

when approaching the spinodal line, where  $\kappa_T \propto \partial \rho / \partial p|_T \rightarrow \infty$ . The liquid-vapour spinodal delimits the portions of the thermodynamic  $p$ – $\rho$ – $T$  surface where fluid water can exist in stable or metastable state. The liquid branch of spinodal starts in the critical point and runs to negative pressures (tensile stress) with decreasing temperature. However, to explain the divergences in the supercooled water at atmospheric pressure, it would have to run through a pressure minimum and then increase again, as shown in Fig. 1a, to reach zero pressure at around 228 K. Speedy suggested that such re-entrant behaviour is indeed possible, because of the well-known density anomaly of water, the density maximum found at 4.0 °C when moving along an isobar at atmospheric pressure. When moving along isochores  $p(T, \rho)$  with different densities  $\rho$ , one finds corresponding pressure minima, whose loci form the so-called Temperature of Maxima Density (TMD) line, the dotted lines in Fig. 1. The TMD line extends to the negative pressure region where liquid water is in a stretched metastable state. If the TMD line hits the spinodal, then it must be in a spinodal pressure minimum, as can be shown by a simple thermodynamic argument. Thus, the spinodal is re-entrant, possibly reaching zero pressure at the desired temperature of –45 °C.

Speedy’s stability limit conjecture was soon challenged, but direct experimental verification remains impossible, because in stretched water, spontaneous bubble nucleation occurs way before reaching the spinodal, and in the supercooled region the accessible range is limited by ice nucleation. However, a strong indication against Speedy’s conjecture came from molecular dynamic simulations with realistic water models. Poole and coworkers<sup>6</sup> found evidence that with decreasing

<sup>a</sup> Institute of Applied Physics, University of Bern, Sidlerstrasse 5, 3012 Bern, Switzerland. E-mail: martin.frenz@iap.unibe.ch

<sup>b</sup> GeoForschungsZentrum Potsdam, Telegrafenberg, 14473 Potsdam, Germany

<sup>c</sup> Department of Photonics Engineering, Technical University of Denmark, Frederiksborgvej 399, Himmelsev, 4000, Roskilde, Denmark

<sup>d</sup> Current address: Institute of Environmental Physics, University of Heidelberg, Im Neuenheimer Feld 229, 69102 Heidelberg, Germany

<sup>e</sup> Current address: Institute of Earth and Environmental Sciences, University of Potsdam, Karl-Liebknecht-Str. 24-25, 14476 Potsdam-Golm, Germany

† Electronic Supplementary Information (ESI) available. See DOI: 10.1039/x0xx00000x

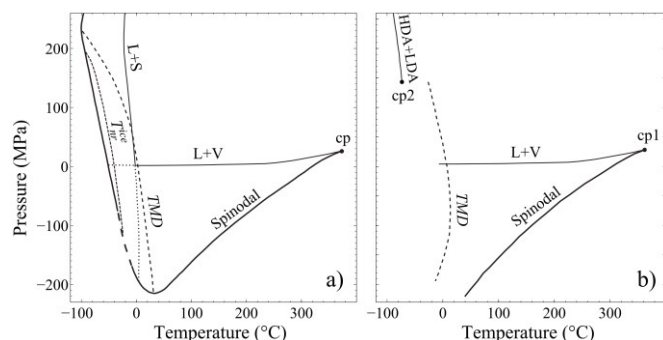


Fig. 1: Two models proposed for the stability limit of metastable liquid water.

a) The “stability limit conjecture”<sup>5</sup> postulates a single continuous spinodal curve that exhibits a pressure minimum and returns to positive pressures at low temperatures. The *TMD* line remains negatively sloped in the metastable region. The  $p$ - $T$  diagram additionally displays the liquid-solid (L+S) and liquid-vapour (L+V) equilibrium curves. At low temperatures the spinodal is hidden behind the  $T_{nr}^{ice}$  curve indicating homogeneous ice nucleation.

b) The model proposed by Poole et al.<sup>6</sup> displays a *TMD* line that bends over to positive slope in the metastable region and does not intersect the spinodal. In consequence of this, the spinodal remains positively sloped and continues to higher negative pressures with decreasing temperature. The model postulates a second critical point (cp2) terminating the HDA-LDA coexistence line (HDA = High-Density Amorphous ice, LDA = Low-Density Amorphous ice). Note, the liquid-solid coexistence curve and the ice nucleation curve are not shown.

density the *TMD* line in the  $p$ - $T$  representation bends to positive slope and never meets the spinodal, as indicated in Fig. 1b. Thus the simulated liquid spinodal keeps monotonically decreasing with decreasing temperature. In this scenario, another reason for the anomalies of supercooled water must be sought, for example a Widom line<sup>7</sup> emanating from a novel critical point associated with two states of amorphous ice, or a novel state of low density liquid.<sup>8</sup> Meanwhile the number of simulations and of possible scenarios has increased,<sup>4</sup> but the debate still suffers from the lack of experimental data.

The major problem that frustrates experimental studies in the metastable region of liquid water is heterogeneous nucleation of the vapour bubble. Different experimental techniques, such as Berthelot tubes, shock waves, or acoustic cavitation have been used to approach the liquid-spinodal (see Caupin and Herbert<sup>9</sup> and references therein), but by far the highest negative pressures of up to  $-140$  MPa have been achieved by (pseudo)-isochoric cooling of synthetic fluid inclusions in quartz crystals (e.g. Zheng et al.<sup>10</sup>). Due to their microscopic size and strong hydrogen bonds between water and quartz, spontaneous heterogeneous nucleation of both, the vapour and the solid phase, is strongly hampered and the water remains in a stretched metastable state down to large negative pressures. A disadvantage of the fluid inclusion approach, however, is that the fluid pressure cannot be directly measured, but has to be calculated from an adequate equation of state that provides a reasonable extrapolation into the metastable region (e.g. IAPWS-95<sup>11</sup>).

Previous applications of fluid inclusions in this field have focused on measurements of spontaneous retrograde bubble nucleation temperatures  $T_{nr}^{vap}$  to determine maximum negative pressures along different fluid isochores.<sup>10,12,13</sup> The density of the water in the inclusions, as well as the corresponding liquid-isochores, have been calculated from an equation of state, based on measurements of the liquid-vapour homogenisation temperature  $T_h$ . Because spontaneous nucleation of the vapour bubble was a prerequisite for the measurements of both,  $T_h$  and  $T_{nr}^{vap}$ , these studies were restricted to inclusion densities lower

than  $943 \text{ kg/m}^3$ , corresponding to homogenisation temperatures greater than  $120^\circ\text{C}$ . At higher densities, spontaneous nucleation usually fails to occur, particularly in small inclusions.

A different approach to determine fluid pressures inside the inclusions has been used by Alvarenga et al.<sup>14</sup> and recently by Pallares et al.<sup>4,15</sup> They measured Brillouin scattering of metastable liquid fluid inclusions at different temperatures and internal pressures and compared the data with reference spectra measured along the liquid-vapour equilibrium curve. From the frequency shift with respect to the reference spectra, they calculated the sound velocity in the stretched water and finally, the pressure inside the inclusions.

In the present study, we report new microthermometric data from synthetic high-density water inclusions that, in most cases, do not show spontaneous vapour bubble nucleation upon cooling. Single ultrashort laser pulses were used to stimulate bubble nucleation in the metastable liquid,<sup>16</sup> a precondition for subsequent measurements of the liquid-vapour homogenisation temperature  $T_h$  (L+V $\rightarrow$ L) and thus for an accurate determination of the water density in the inclusions. (The reader who is not familiar with this technique may consult Fig. 1 in ref. 17) Besides prograde homogenisation temperatures  $T_h$  (upon heating) we also report retrograde liquid-vapour homogenisation temperatures  $T_{hr}$  measured upon cooling, ice nucleation temperatures  $T_{nr}^{ice}$  both in presence and in absence of the vapour bubble (L+V $\rightarrow$ S and L $\rightarrow$ S), final ice melting temperatures  $T_m^{ice}$ , most of them measured in absence of a vapour bubble (L+S $\rightarrow$ L), and some measurements of spontaneous, retrograde and prograde vapour bubble nucleation  $T_{nr}^{vap}$  and  $T_{np}^{vap}$  (L $\rightarrow$ L+V), respectively. The IAPWS-95 formulation of Wagner and Pruss<sup>11</sup> was used in this study to calculate water densities and simultaneously serves as a reference to compare with our data. We note that IAPWS-95 assumes a negative slope of the *TMD* line throughout the metastable region, which results in a similar trend of the spinodal as proposed in Speedy’s “Stability-Limit Conjecture”.<sup>5</sup>

## 2. Materials and Methods

### 2.1. Synthetic fluid inclusions

Synthetic fluid inclusions were produced according to the principles described by Sterner and Bodnar<sup>18</sup> and Bodnar and Sterner.<sup>19</sup> A total of twelve gold capsules were prepared containing pre-fractured quartz prisms and deionized (air-saturated) water. Hydrothermal syntheses of the inclusions were performed in an internally heated pressure vessel (IHPV) at temperatures between  $420$  and  $520^\circ\text{C}$  and at pressures ranging from  $710$  to  $860$  MPa using argon as pressure medium. Run durations were between  $46$  and  $96$  hours. After the hydrothermal runs the quartz prisms were removed from the gold capsules and cut into slices. The slices were ground and polished on both sides to a final thickness of  $250$  to  $300 \mu\text{m}$ . The synthesized fluid inclusions were usually flat without negative crystal faces and inclusion sizes were typically below  $500 \mu\text{m}^3$  (Fig. 2). Water densities of the inclusions were precisely determined by microthermometric measurements (*cf.* Sec. 2.4.2) and range from  $996$  to  $916 \text{ kg/m}^3$ . In most of the samples, the inclusions were in a monophasic liquid state at room temperature and did not show spontaneous bubble nucleation upon further cooling.

A detailed description of the preparation and synthesis procedures we used to produce the fluid inclusions for this study can be found in section S-2.1 in the Supplementary Material.



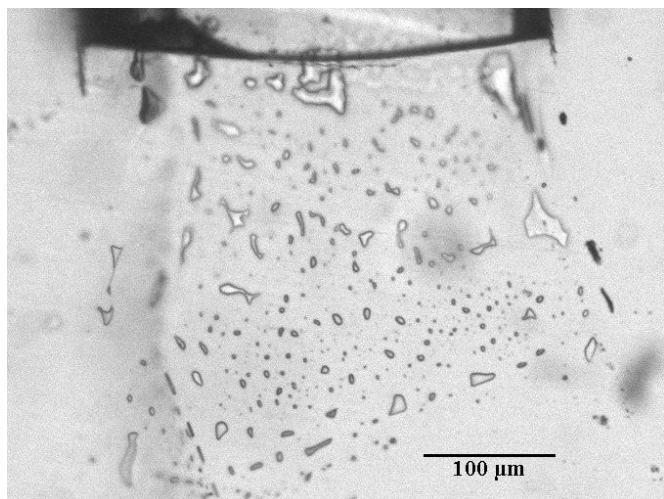


Fig. 2: Assemblage of synthetic fluid inclusions in quartz formed during hydrothermal experiments along a healed crack.

## 2.2. Experimental setup

The experimental setup is built around an upright microscope (Olympus BX51) and consists of: (i) a heating/freezing stage, (ii) a femto-second laser system providing amplified ultrashort laser pulses, and (iii) a Raman spectrometer. A simplified scheme of the setup is shown in Fig. 3 and a more detailed version is provided in Fig. S-1 (Supplementary Material).

i) The heating/freezing stage (Linkam THMSG 600) is mounted on the microscope and allows for microthermometric measurements in the temperature range between  $-180$  and  $600$  °C. Temperature calibrations of the stage were performed using synthetic  $\text{H}_2\text{O}$  and  $\text{H}_2\text{O}-\text{CO}_2$  fluid inclusion standards for the triple point of water ( $0.0$  °C), the triple point of  $\text{CO}_2$  ( $-56.6$  °C), and the critical point of  $\text{CO}_2$  ( $31.4$  °C $^{20}$ ). Based on these calibrations, we estimate the accuracy of the temperature measurements at  $\pm 0.1$  °C around  $0$  °C, at  $\pm 0.2$  °C below  $-20$  °C and above  $40$  °C and at  $\pm 0.3$  °C above  $100$  °C. The precision (reproducibility) determined from replicate measurements is  $\pm 0.05$  °C. Further details are provided in section S-2.2 (Supplementary Material).

ii) An amplified femtosecond (fs) laser system (Coherent) was used to stimulate vapour bubble nucleation in the metastable liquid state of the inclusions by means of single ultrashort laser pulses. For a detailed description of the setup we refer to Supplementary Material and to Krüger et al.<sup>16</sup> The experimental setup allows us to stimulate vapour bubble nucleation in selected fluid inclusions at different temperatures under microscopic observation. Subsequent microthermometric measurements can be performed without moving the sample.

iii) Confocal Raman spectroscopy was used to identify the ice phase in the inclusions in order to determine ice nucleation temperatures. In pure water inclusions the phase transition is not visible from microscopic observations unless a vapour bubble is present that becomes strongly compressed upon ice nucleation. The fiber-coupled Raman setup consists of a  $500$  mW diode-pumped solid-state single mode laser with  $532$  nm wavelength and  $1$  MHz bandwidth, (Torus, Laser Quantum. For Raman excitation  $60$  mW were used) two dichroic mirrors, a spectrometer (Horiba iHR550M CORE 3) and a

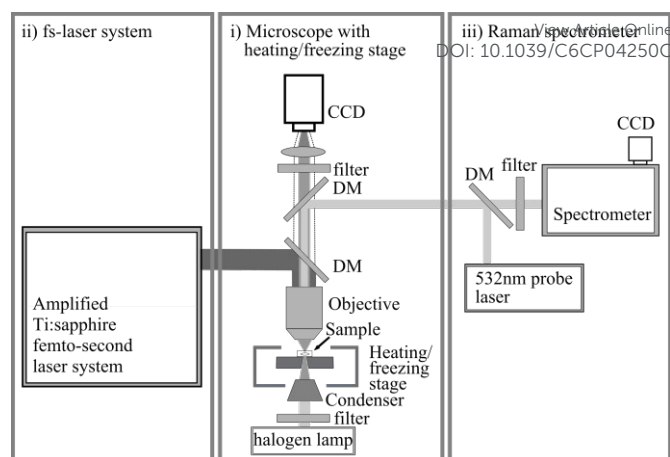


Fig. 3: Simplified scheme of the experimental setup used for this study. See text for details. DM: dichroic mirror.

back-illuminated CCD camera (Horiba SYNAPSE BIVS). Again a detailed description of the Raman setup is given in the Supplementary Material. The setup allows us to measure Raman spectra at different temperatures under simultaneous observation of the focus position of the excitation beam relative to the fluid inclusion.

## 2.3. Microthermometric measurements

Using the synthetic pure water inclusions we measured prograde and retrograde liquid-vapour homogenisation temperatures  $T_h$  and  $T_{hr}$ , respectively, ice nucleation temperatures  $T_{nr}^{ice}$ , and ice melting temperatures  $T_m^{ice}$ . Moreover, in low density ( $\rho < 925$  kg/m $^3$ ) inclusions, we measured the temperatures of spontaneous bubble nucleation, not only the common retrograde  $T_{nr}^{vap}$  (upon cooling), but also the prograde bubble nucleation  $T_{np}^{vap}$ , upon heating of inclusions that previously underwent an ice nucleation and melting loop.

The temperatures of the different phase transitions were measured at very low heating and cooling rates, respectively to ensure that the sample was in thermal equilibrium with the heating/cooling block of the stage. When approaching the expected phase transition, i.e., for the final 1 or 2 centigrade the temperature was changed in 0.1 centigrade steps with intervals of 10 to 20 seconds in between. The different phase transitions are illustrated in Fig. 4 in a schematic representation of the  $p$ - $T$  diagram of water. The phase diagram displays the liquid-vapour (L+V) and liquid-solid (L+S) equilibrium curves, the bubble-nucleation (cavitation) curve ( $T_{nr}^{vap}$  and  $T_{np}^{vap}$ ), the ice nucleation curve ( $T_{nr}^{ice}$ ) and three liquid-isochores passing through a pressure minimum.

### 2.3.1. Prograde and retrograde liquid-vapour homogenisation

Fig. 5 shows a series of inclusion images illustrating prograde (top) and retrograde (bottom) liquid-vapour homogenisation. We started our measurements at  $20$  °C with inclusions being in a metastable liquid state at negative pressure (tensile stress) and stimulated vapour bubble nucleation by means of single ultrashort laser pulses. When the bubble nucleates, both the pressure and the density of the liquid phase increase and the inclusion transfers into a stable liquid-vapour two-phase state (L $\rightarrow$ L+V). Upon subsequent heating, the liquid phase expands at the expense of the vapour bubble. The decrease of the bubble size was routinely documented in a series of microphotographs taken at known temperatures. Finally, the vapour bubble collapses and

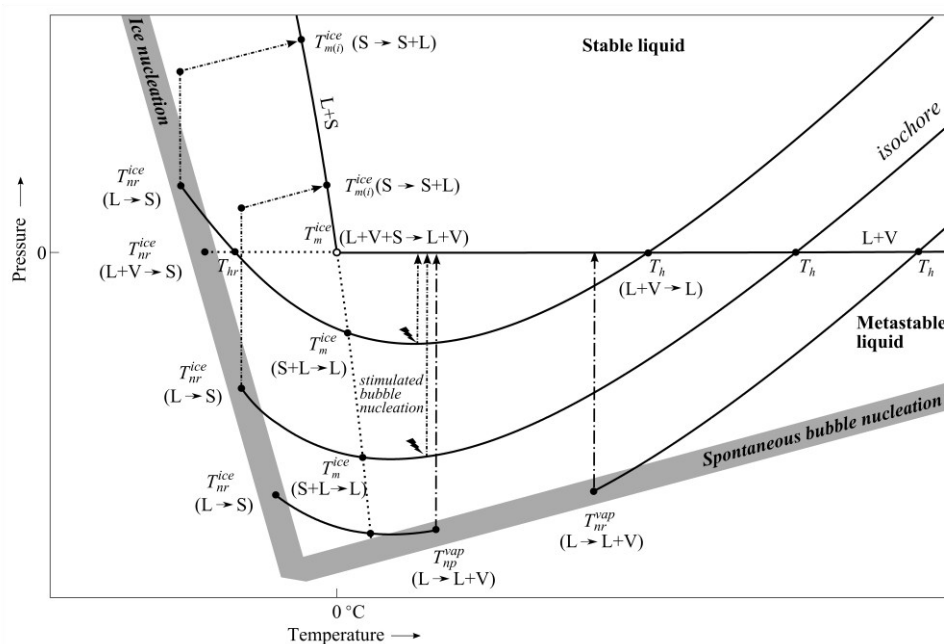


Fig. 4: Schematic  $p$ - $T$  phase diagram of water illustrating the different phase transitions observed in this study: liquid-vapour homogenisation ( $L+V \rightarrow L$ ), ice nucleation ( $L \rightarrow S$  and  $L+V \rightarrow S$ ), final ice melting ( $L+S \rightarrow L$  and  $L+V+S \rightarrow L+V$ ) and spontaneous vapour bubble nucleation ( $L \rightarrow L+V$ ). Thin solid curves represent three different liquid-isochores. The liquid-vapour equilibrium curve ( $L+V$ ; solid line) is extended (dotted line) into the supercooled region, while the liquid-solid equilibrium curve ( $L+S$ ; solid line) is extended to negative pressure (dotted line). The two curves form the upper boundaries of the doubly metastable region in which liquid water is metastable with respect to both vapour and ice. Broad grey lines denote  $p$ - $T$  ranges of ice nucleation and spontaneous vapour bubble nucleation, respectively. Arrows indicate pressure increases due to spontaneous or stimulated vapour bubble nucleation as well as due to ice nucleation and subsequent upon heating. Flash symbols signify laser-induced bubble nucleation.

the inclusion homogenises into a stable liquid state ( $L+V \rightarrow L$ ) at the (prograde) liquid-vapour homogenisation temperature  $T_h$ . Close to  $T_h$ , the vapour bubble becomes very small and hardly visible and often it starts moving around in the inclusions, preferably towards the dark corners of the inclusions. Therefore, liquid-vapour homogenisation could not always be observed directly. In these situations, we used a temperature cycling procedure<sup>21</sup> to precisely determine the temperature at which the bubble finally disappeared.

After  $T_h$  measurements the inclusions were cooled to room temperature and vapour bubble nucleation was induced again by means of a femtosecond laser pulse. Subsequently the inclusions were further cooled to measure the retrograde homogenisation temperature  $T_{hr}$  following the same procedure as described for the  $T_h$  measurements. But unlike prograde homogenisation, retrograde homogenisation can only be observed in high-density inclusions, in which  $T_{hr}$  is higher than  $T_{nr}^{ice}$ , the temperature of ice nucleation. Fig. 4 shows that the isochores

of such high-density inclusions intersect the liquid-vapour equilibrium curve ( $L+V$ ) twice, at  $T_h$  and  $T_{hr}$ , respectively. The reproducibility of the measured  $T_h$  and  $T_{hr}$  values was routinely checked by duplicate measurements alternately measuring prograde and retrograde homogenisation.

### 2.3.2. Ice nucleation

At the ice nucleation temperature  $T_{nr}^{ice}$  the liquid water transforms to solid ice. Again we started our measurements at 20 °C with inclusions being in a metastable liquid state at negative pressure. Upon cooling the pressure follows along the corresponding liquid-isochores to low temperatures (see Fig. 4) until ice spontaneously forms from the supercooled liquid ( $L \rightarrow S$ ). Since liquid water instantaneously transforms to ice, the phase transition cannot be observed visually as illustrated in Fig. 6a. Therefore, we used Raman spectroscopy to detect the characteristic change in the Raman spectrum when ice nucleation occurs (Fig. 6b). The Raman spectra were measured using a low-resolution grating (300 grooves/mm) and 1 second integration time, which allowed a ‘real-time’ monitoring of the inclusions during stepwise cooling. Test measurements were performed to ascertain that the

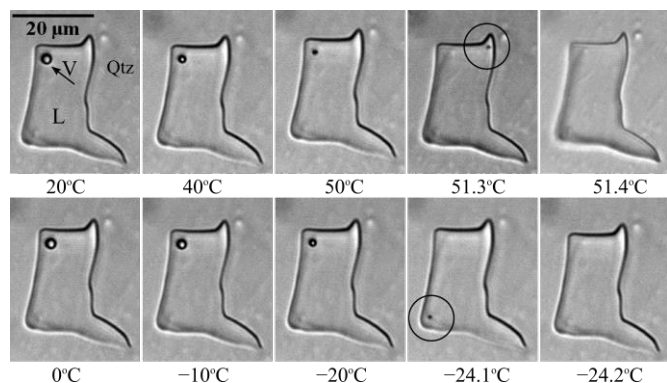


Fig. 5: Top: Series of inclusion images illustrating prograde liquid-vapour homogenisation. After laser-induced bubble nucleation the inclusion is heated and the vapour bubble becomes smaller due to expansion of the liquid. Close to the homogenisation temperature the bubble starts moving and becomes hardly visible (inside circle). Finally, the bubble collapses and the inclusion homogenises to the liquid. Bottom: Series of inclusion images illustrating retrograde liquid-vapour homogenisation. Observations are the same as for prograde homogenisation.

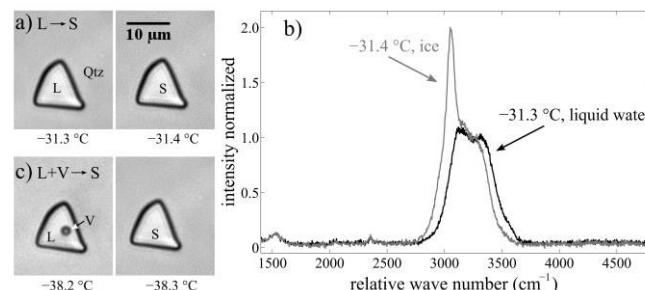


Fig. 6: a) ice nucleation in a supercooled monophase liquid inclusion at negative pressure ( $L \rightarrow S$ ). The two images demonstrate that the phase transition cannot be observed visually. b) Raman spectra of the inclusion shown in a) illustrating the distinctive change from liquid water to ice. c) ice nucleation in the presence of the vapour bubble ( $L+V \rightarrow S$ ). The vapour bubble becomes completely compressed due to the larger volume of the ice compared to liquid water.

60 mW laser beam used for Raman excitation has no measurable effect on the nucleation of the ice phase as well as on the temperature of the sample. This was done by measurements of  $T_{nr}^{ice}$  and  $T_m^{ice}$  at saturation pressure and comparing the results obtained with and without laser irradiation of the inclusion.

In high-density inclusions featuring retrograde liquid-vapour homogenisation, ice nucleation occurs at positive pressures, while in low-density metastable liquid inclusions nucleation of ice takes place at negative pressures. Since these low-density inclusions do not exhibit retrograde homogenisation, we could also use them to measure  $T_{nr}^{ice}$  at saturation vapour pressure. To do so, we stimulated vapour bubble nucleation in the metastable liquid and cooled the inclusions along the liquid-vapour equilibrium curve (see Fig. 4). Upon ice nucleation the vapour bubble disappeared again due to the volume expansion of ice relative to liquid water ( $L+V \rightarrow S$ ; Fig. 6c).

The nucleation of ice results in an abrupt pressure increase in the inclusions. The pressure in the ice Ih state can be calculated using the equation of state by Feistel and Wagner,<sup>22</sup> but since pressure in the inclusion is not measurable, we refrain from exact calculations. To assess the magnitude of the pressure, a rough estimate using Table. 11 in ref. <sup>22</sup> is sufficient: In the inclusion with the lowest density of 922 kg/m<sup>3</sup> ice nucleates at -30.5 °C (see Fig. 9) and the resulting pressure remains below 0.1 MPa (because the inclusion's density is the same as the density of ice at nearly zero pressure at the given temperature). However, in inclusions with  $\rho > 942$  kg/m<sup>3</sup> the pressure become larger than 200 MPa after ice nucleation, exceeding thereby the range of validity of the ice Ih equation of state. Such high internal pressures can cause irreversible volume changes of the inclusions. Therefore, we routinely re-measured prograde homogenisation temperatures after  $T_{nr}^{ice}$  and subsequent  $T_m^{ice}$  measurements to check for a potential decrease of the water densities. In the case of irreversible volume changes, the initially measured  $T_{nr}^{ice}$  values did not reproduce in duplicate measurements but were systematically higher.

### 2.3.3. Ice melting

After ice nucleation, we heated the samples again to measure ice melting temperatures  $T_m^{ice}$ . The measurements of ice melting temperatures started at  $T_{nr}^{ice}$  in the positive pressure region of the ice stability field (see Fig. 4). Upon heating, the frozen system moves along the ice isochore  $p(T|\rho^{ice})$  and pressure slightly increases until the liquid-solid equilibrium is reached, where the ice starts melting at the temperature

of initial ice melting  $T_{m(i)}^{ice}$  ( $S \rightarrow S+L$ ). Note that  $T_{m(i)}^{ice}$  depends on pressure, i.e., on the density of inclusion. With further increasing of the temperature, the system moves down along the melting curve and with some temperature delay a phase boundary between the ice and the liquid phase becomes visible, which can be used as a maximum estimate of the initial ice melting temperature. Due to relatively large uncertainties in determining initial ice melting temperatures, we did not systematically measure  $T_{m(i)}^{ice}$  in the present study. Upon further heating, ice was melting continuously and the final melting is achieved at a temperature  $T_m^{ice}$  ( $L+S \rightarrow L$ ), which occurs at negative pressures, ideally at the intersection of the L+S curve with the corresponding liquid-isochore of the inclusion, as indicated in Fig. 4. After final ice melting the inclusions were again in a metastable liquid state and we subsequently re-measured  $T_h$  to check whether the inclusion volumes have changed due to ice nucleation.

The inclusions with the lowest water densities analysed in this study ( $T_h > 140$  °C) allowed us to measure the ice melting temperature under three-phase conditions (see Fig. 7b). For this purpose, we used the femtosecond laser pulses to stimulate vapour bubble nucleation during the melting at -0.1 °C in the presence of liquid water and ice ( $L+S \rightarrow L+S+V$ ). In the inclusion shown in Fig. 7b, final ice melting was measured between 0.0 and +0.1 °C ( $L+V+S \rightarrow L+V$ ) as expected for pure water inclusions.

### 2.3.4. Spontaneous vapour bubble nucleation

Two of our quartz samples contained low-density fluid inclusions that were in a stable liquid-vapour two-phase state at room temperature due to spontaneous nucleation of the vapour bubble ( $L \rightarrow L+V$ ). We started the measurements of retrograde bubble nucleation temperatures  $T_m^{ice}$  first by heating the samples in order to re-homogenise the inclusions at temperatures between 145 and 151 °C ( $L+V \rightarrow L$ ). Upon subsequent cooling the pressure in the inclusions follows the corresponding liquid-isochore into the metastable region up to the spontaneous nucleation of the vapour bubble. In addition to retrograde bubble nucleation (upon cooling) we also observed prograde vapour bubble nucleation (upon heating) in the same inclusions. Starting again with a liquid-vapour two-phase state, the inclusions were cooled along the liquid-vapour equilibrium curve until ice nucleated. Now, the vapour bubble vanished either directly upon ice nucleation ( $L+V \rightarrow S$ ) or afterwards due to slight expansion of the ice upon subsequent heating ( $L+V \rightarrow S+V \rightarrow S$ ). We continued heating until ice started to melt at the liquid-solid equilibrium curve ( $S \rightarrow S+L$ ). Upon further heating the pressure in the inclusions follows the ice melting curve into the metastable region until all the ice had melted at  $T_m^{ice}$  ( $L+S \rightarrow L$ ). Now, the inclusions were again in a metastable liquid state and pressure is determined by the liquid-isochore. Finally, upon further heating, we observed spontaneous prograde vapour bubble nucleation ( $L \rightarrow L+V$ ) at  $T_{np}^{vap}$  values that were systematically lower than retrograde bubble nucleation temperatures  $T_{nr}^{vap}$ . Measurements of  $T_{nr}^{vap}$  and  $T_{np}^{vap}$  were performed with a constant cooling and heating rate of 2 centigrades per minute.

## 2.4. Basics of data analysis

### 2.4.1. IAPWS-95

Fluid inclusion microthermometry provides information only on the temperature of phase transitions while pressure and density need to be calculated based on an adequate equation of state. In this study we

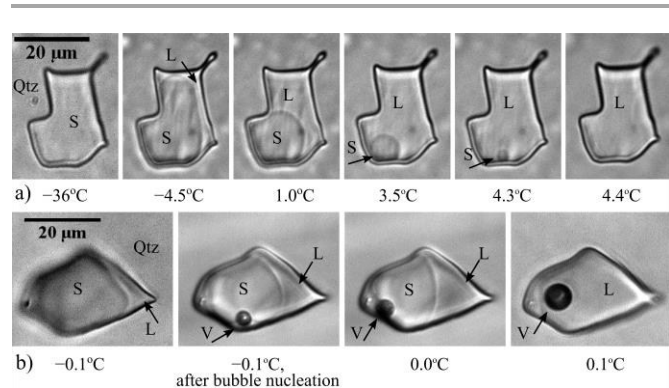


Fig. 7: a) Series of inclusion images illustrating ice melting in absence of the vapour bubble. Ice melting proceeds continuously after reaching the L+S equilibrium curve. Final ice melting occurred at positive temperatures in the metastable liquid region ( $L+S \rightarrow L$ ). b) Final ice melting at saturation pressure after stimulating vapour bubble nucleation ( $L+V+S \rightarrow L+V$ ).



used the IAPWS-95 formulation of Wagner and Pruss<sup>11</sup> that provides the Helmholtz energy of the liquid and gaseous phase from which the  $p$ - $V$ - $T$  properties of the isochoric pure water system can be derived. The validity range of the formulation is between 250 and 1273 K and from 0 to 1000 MPa.

In the first place we used the IAPWS-95 formulation to calculate the density of the liquid phase at saturation pressure, i.e., along the liquid-vapour equilibrium curve. At this point, we note that in addition to the IAPWS-95 formulation, Wagner and Pruss also reported a polynomial function that can be used alternatively to calculate liquid-densities along the liquid-vapour curve (Eq. 2.6, Section 2.3.1<sup>11</sup>). However, since this polynomial is an empirical fit to experimental data above 0 °C, it covers only the stable part of the liquid-vapour curve and should not be extrapolated into the supercooled metastable region. A comparison of the two modes of calculation revealed increasing divergence of the liquid densities below -20 °C, with lower densities resulting from IAPWS-95.

The IAPWS-95 formulation is considered to exhibit ‘reasonable’ behaviour when extrapolated into the metastable liquid region (Section 7.3.2<sup>11</sup>). It allows us to extrapolate the liquid-isochores into the metastable region and to calculate the liquid-spinodal. Similar to the ‘stability limit conjecture’,<sup>5</sup> IAPWS-95 assumes a negative slope of the  $TMD$  line in the metastable region, and, as a consequence, the spinodal turns up towards positive pressures at low temperatures.

Although IAPWS-95 does not provide any information about the solid states of water, Wagner and Pruss gave a polynomial function describing the  $p$ - $T$  trend of the ice melting curve (Ih) (Eq. 2.16, Section 2.4.1<sup>11</sup>) derived from Wagner et al.<sup>23</sup> The curve is based on a fit to experimental data, including a few measurements of Henderson and Speedy,<sup>24</sup> providing ice melting temperatures in the metastable region down to -22.8 MPa. Due to the lack of experimental data at higher tensile stress, we extrapolated the ice melting curve further into the metastable region for comparison with our new ice melting data.

#### 2.4.2. Effect of surface tension

The temperature at which the liquid-vapour equilibrium curve intersects the liquid-isochore (see Fig. 4) determines the bulk density of the water in the inclusions and is commonly referred to as liquid-vapour homogenisation temperature  $T_h$ . Strictly speaking, however, this definition of  $T_h$  holds true only for infinitely large systems since it does not account for the volume-dependent effect of surface tension on liquid-vapour homogenisation. Henceforth, we will therefore use the term  $T_{h\infty}$  to denote the intersection of the liquid-vapour equilibrium curve with the liquid-isochore. This  $T_{h\infty}$  determines the actual bulk density  $\rho_{bulk}$  of the liquid water in the inclusion. While the effect of surface tension is negligible in macroscopic systems, it becomes significant in microscopic systems like fluid inclusions, particularly for low homogenisation temperatures, i.e., at high water densities. Here, the actually observed homogenisation temperature  $T_{hobs}$  depends not only on the density but also on the size of the inclusion as demonstrated by Fall et al.<sup>25</sup> This means that besides  $T_{hobs}$  an additional volume measurement is required to determine the density of the inclusions. For practical reasons, we do not measure the volume  $V$  of the inclusions (cf. Stoller et al.<sup>26</sup>). Instead, we determine the volume of the spherical vapour bubble based on radius measurements  $r(T)$  at known temperatures (see Section 2.4.4. below). For the calculations of  $T_{h\infty}$  (and thus  $\rho_{bulk}$ ) and the inclusion volume  $V$  we used the ther-

modynamic model of Marti et al.<sup>17</sup> that accounts for the effect of surface tension on liquid-vapour equilibria in isochoric systems.<sup>27</sup> The model relies on the minimisation of the Helmholtz energy of the system derived from the IAPWS-95 formulation, and predicts the thermodynamic state, the vapour bubble radius, and the densities and pressures of the liquid and the vapour phase at a given temperature, volume, and bulk density of the system. For inclusions analysed in this study the temperature differences between  $T_{hobs}$  and  $T_{h\infty}$  were up to 1.8 °C. A schematic  $p$ - $T$  diagram illustrating the effect of surface tension on liquid-vapour homogenisation is shown in Fig. S-2 (Supplementary Material).

#### 2.4.3. Deviation from the isochoric system

Fluid inclusions are commonly regarded as isochoric systems, in which the pressure  $p(T)$  is defined by a liquid-isochore. In the present study, however, we applied a correction to account for the temperature-dependent volume change of the quartz crystal hosting the inclusions using expansion coefficients  $\alpha$  of Desai.<sup>27</sup> The pressure  $p(T)$  in the inclusion now follows a ‘pseudo-isochoric’ curve. Although the volume changes of the quartz host are relatively small they result in a significant shift of the retrograde homogenisation temperature compared to the isochoric system. A schematic  $p$ - $T$  diagram illustrating the difference between an isochoric and a quartz-confined system with respect to retrograde homogenisation is shown in Fig. S-3 (Supplementary Material).

#### 2.4.4. Bubble radius measurements

The radius of the vapour bubble was determined based on microphotographs taken at different temperatures assuming a spherical bubble.<sup>28</sup> The inclusions analysed in this study, however, were often flat and the bubble diameter, particularly in ‘low-density’ inclusions exceeded the extension of the inclusions in  $z$ -direction, which results in an oblate shape of the bubble and a radius that is apparently too large. To check whether or not the vapour bubble is spherical at a specific temperature we analysed the changes of the measured bubble radii as a function of temperature. Fig. 8a shows the example of a ‘low-density’ inclusion with a spherical vapour bubble in the entire temperature range between  $T_{hobs}$  and  $T_{nr}^{ice}$ . The solid curve represents a best fit of the radius measurements and predicts the theoretical evolution of the bubble radius for an inclusion volume of 210  $\mu\text{m}^3$ . In contrast, Fig. 8b shows another ‘low-density’ inclusion, in which the bubble becomes spherical only at radii smaller than 1.7  $\mu\text{m}$ , i.e., at temperatures above 60 °C and below -20 °C, respectively. At temperatures in

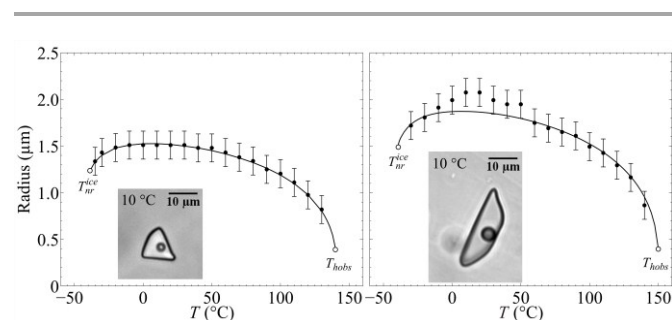


Fig. 8: Comparison of bubble radius measurements (dots) with the theoretical radius evolution (solid curve). Error bars indicate the estimated accuracy of the radius measurements of  $\pm 0.15 \mu\text{m}$ . a) Example of an inclusion with spherical vapour bubble in the entire temperature range. The volume of the inclusion was determined at  $210 \pm 60 \mu\text{m}^3$ . b) Example of an inclusion in which the bubble is obviously oblate if the radius exceeds 1.7  $\mu\text{m}$ . The volume of the inclusion was determined at  $360 \pm 90 \mu\text{m}^3$ . In both examples shown  $T_{nr}^{ice}$  occurs before  $T_{hobs}$ .



between the measured bubble radii are systematically larger than the theoretical radii predicted for an inclusion volume of  $410 \mu\text{m}^3$ , which indicates deformation of the bubble due to the confining inclusion walls. We performed these radius analyses for all inclusions in this study in order to eliminate a potential source of error in the determination of the inclusion volume  $V$ , and thus of  $T_{h\infty}$  and  $T_{hr\infty}$ , and the bulk density  $\rho_{bulk}$ . The accuracy of the radius measurements is estimated to be  $\pm 0.15 \mu\text{m}$ . The precision of the measurements is  $\pm 0.05 \mu\text{m}$  reflecting the deviation of the measured bubble radii from the best-fit curve of the theoretical radius evolution.

### 3. Results

A graphical representation of the results obtained in this study is shown in Fig. 9 and displays  $T_{h\infty}$ ,  $T_{hr\infty}$ ,  $T_{nr}^{ice}$  (only L→S),  $T_m^{ice}$ ,  $T_{nr}^{vap}$  and  $T_{np}^{vap}$  as a function of density. The reason for using a  $\rho$ - $T$  representation instead of the more familiar  $p$ - $T$  diagram is because we have an accurate measure for the density of the inclusions via  $T_{hobs}$  and the bubble radius  $r(T)$ , whereas the pressure inside the inclusions needs to be calculated by extrapolation of the IAPWS-95 formulation into the metastable region. The diagram displays additional experimental data of previous studies<sup>10,12,13,29-31</sup> for comparison with our new data. The liquid-vapour equilibrium curve (L+V) and the liquid-spinodal were derived from IAPWS-95,<sup>11</sup> and the liquid-solid equilibrium curve (L+S) from Wagner et al.<sup>23</sup> Finally, the diagram displays three

pseudo-isochores (with slight negative slope) that intersect the liquid-vapour equilibrium curve at  $T_{h\infty}$  of 50, 90 and  $150^\circ\text{C}$  (with bulk densities of 988.0, 965.3 and  $917.0 \text{ kg/m}^3$ , respectively). Numerical values of our experimental data are reported in Tables 1-3 in the Appendix.

#### 3.1. Liquid-vapour homogenisation data

Figure 9 displays the  $T_{h\infty}$  and  $T_{hr\infty}$  data of prograde and retrograde liquid-vapour homogenisation, respectively, which by definition plot on the liquid-vapour equilibrium curve (L+V) and hence determine the bulk density of the water in the inclusions. The densities  $\rho_{bulk}$  derived from prograde liquid-vapour homogenisation are used here as a reference values to characterise the inclusions. They range from 996 to  $916 \text{ kg/m}^3$ . By applying a correction to  $\rho_{bulk}$  for the temperature-dependent volume change of the quartz host, we obtained  $\rho(T)$ , the density of an inclusion at any other temperature, namely at  $T_{nr}^{ice}$ ,  $T_m^{ice}$ ,  $T_{np}^{vap}$  and  $T_{nr}^{vap}$ . Retrograde liquid-vapour homogenisation was observed only in high-density inclusions with  $\rho_{bulk}$  greater than  $965 \text{ kg/m}^3$ , corresponding to  $T_{h\infty}$  values below  $90^\circ\text{C}$ . The lowest  $T_{hr\infty}$  value determined in this study was at  $-37.2^\circ\text{C}$ .

#### 3.2. Ice nucleation data

In high-density inclusions with  $T_{h\infty} < 90^\circ\text{C}$ , ice nucleation commonly resulted in irreversible volume changes, and thus,  $T_{nr}^{ice}$  systematically increased in replicate measurements. This effect did not occur

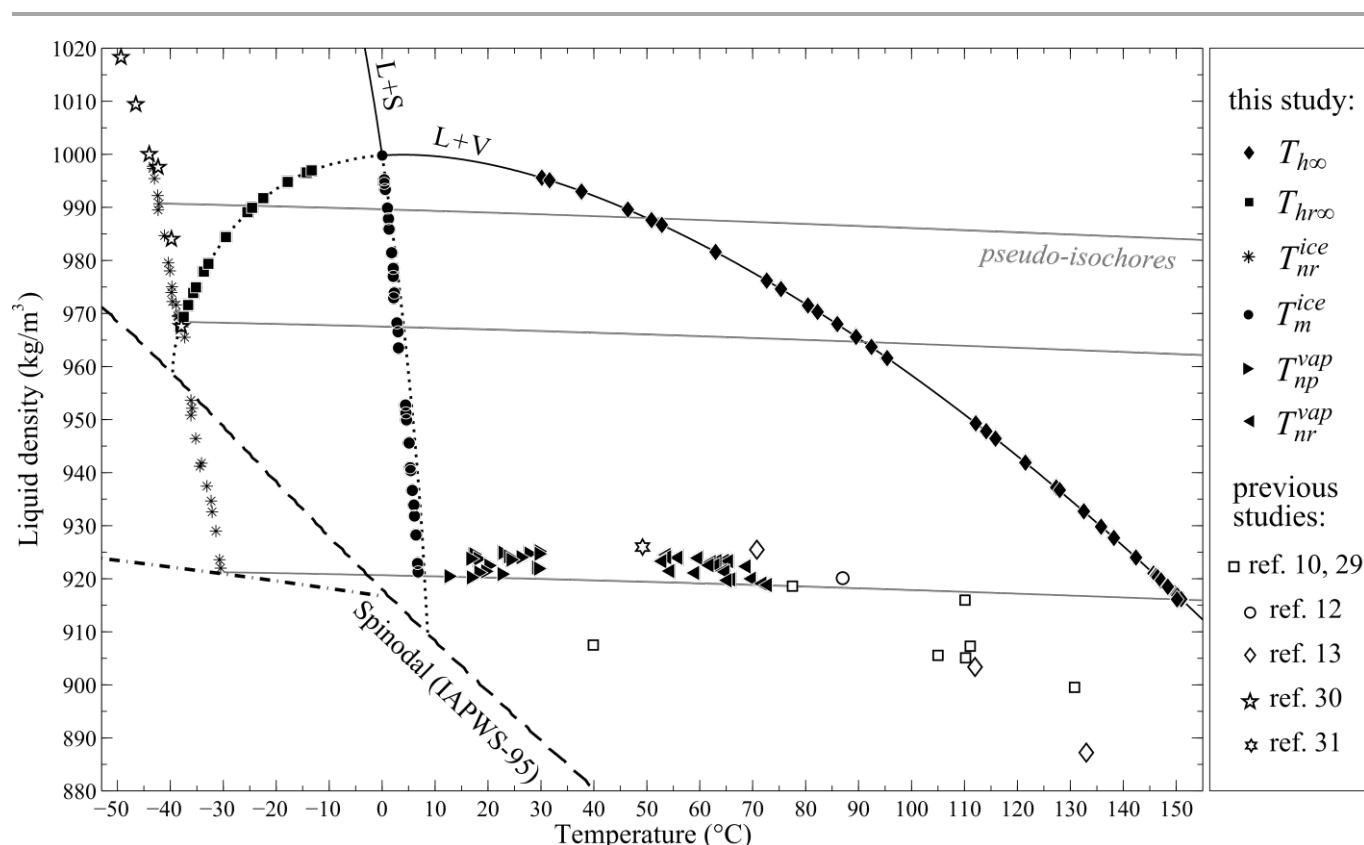


Fig. 9:  $\rho$ - $T$  diagram illustrating the results of the fluid inclusion measurements.  $T_{nr}^{ice}$ : ice nucleation in absence of the vapour phase (L→S).  $T_m^{ice}$ : final ice melting in absence of the vapour phase (L+S→L).  $T_{h\infty}$  and  $T_{hr\infty}$ : prograde and retrograde liquid-vapour homogenisation (L+V→L).  $T_{np}^{vap}$  and  $T_{nr}^{vap}$ : spontaneous retrograde and prograde vapour bubble nucleation (L→L+V). Results of previous experimental studies are plotted for comparison.

L+V: liquid-vapour equilibrium curve (IAPWS-95). L+S: liquid-solid equilibrium curve.<sup>23</sup> Dashed line: liquid-spinodal (IAPWS-95). Grey solid nearly horizontal lines: pseudo-isochore curves. Dash-dotted line: density of ice at zero pressure.<sup>22</sup>

in low-density inclusions, in which case,  $T_{nr}^{ice}$  was typically reproduced within  $\pm 0.5$  °C. In Table 1 and Fig. 9 we report only the lowest  $T_{nr}^{ice}$  value measured in each inclusion considering these minimum temperatures as the closest approximation to homogeneous ice nucleation. Apart from slight scatter, the data points (eight spoked asterisks) shown in Fig. 9 indicate a linear increase of  $T_{nr}^{ice}$  with decreasing density in the range covered by this study. (Sorry for the lack of data points just below the saturation curve.) For a more detailed view of the ice nucleation data on an enlarged scale we refer to Fig. S-4 (Supplementary Material). We report an ice nucleation line (L→S) derived from a linear fit to our data:

$$\varrho(T_{nr}^{ice}) = -5.8481T + 743.53$$

with  $\varrho(T_{nr}^{ice})$  in  $\text{kg/m}^3$  and  $T$  in °C, validity range from  $-43.3$  to  $-30.5$  °C. In addition to our own ice nucleation data, Fig. 9 displays independent measurements of Kanno and Miyata<sup>30</sup> at high densities, i.e., at positive pressures. Since Kanno and Miyata reported  $p$ - $T$  data of the ice nucleation we converted them to  $\varrho$ - $T$  using the IAPWS-95 formulation. The agreement between the two data sets is quite good. Although formation of ice in stretched water has been observed by several authors,<sup>24,32–34</sup> quantitative data of  $T_{nr}^{ice}$  in the doubly metastable region are scarce and considerably higher than those measured in this study.

The ice nucleation line intersects the liquid-vapour equilibrium curve at  $-38.2$  °C, providing an estimate of the expected ice nucleation temperature  $T_{nr}^{ice}$  at saturation pressure (L+V→S). In comparison to this, the real  $T_{nr}^{ice}$  measurements performed in presence of the vapour bubble (not shown in Fig. 9) yielded slightly lower values by trend, ranging between  $-37.8$  and  $-39.6$  °C (see Fig. S-5). Although these measurements suggest a potential effect of the vapour bubble on ice nucleation temperatures, we found only a weak correlation between  $T_{nr}^{ice}$  and the bubble radius  $r$  at  $T_{nr}^{ice}$  (see Fig. S-6). Replicate measurements of individual inclusions reproduced, with few exceptions, within  $\pm 0.5$  °C. Again, Table 2 and Figures S-5 and S-6 report the lowest  $T_{nr}^{ice}$  (L+V→S) values measured in each inclusion.

At  $-36.2$  °C, Fig. 9 and Fig. S-4 additionally show an intersection of the ice nucleation line with the liquid spinodal predicted by IAPWS-95 (dashed curve). As a result, ice nucleation temperatures measured in low-density inclusions ( $\varrho(T_{nr}^{ice}) < 955$   $\text{kg/m}^3$ ) plot on the left hand side of the spinodal i.e., within the IAPWS-95 defined region of the unstable liquid. Therefore, IAPWS-95 cannot provide any pressures at  $T_{nr}^{ice}$  for these low-density inclusions, which is another reason for presenting our data in a  $\varrho$ - $T$  diagram. It should be noted that we did not observe any indication for a change of the state of liquid water above  $T_{nr}^{ice}$ . Moreover, we found that the application of femtosecond laser pulses in the doubly metastable region, even close to  $T_{nr}^{ice}$ , resulted in vapour bubble nucleation but never stimulated ice nucleation. We therefore conclude that ice nucleation in fluid inclusions is not triggered by bubble nucleation as it was observed by Barrow et al.<sup>34</sup> in Berthelot tube experiments.

### 3.3. Final ice melting data

The results of final ice melting measurements (dots) illustrated in Fig. 9 indicate an increase of  $T_m^{ice}$  with decreasing density  $\varrho(T_m^{ice})$ . For comparison, the diagram also displays a reference ice-melting curve derived by extrapolation of equation 2.16<sup>11</sup> into the metastable region. Again, the initial  $p$ - $T$  curve was converted to a  $\varrho$ - $T$  curve using the

IAPWS-95 formulation. Our fluid inclusion data show significant deviations from the extrapolated  $T_m^{ice}$  curve, which will be discussed in detail in Section 4.3. At densities around  $970$   $\text{kg/m}^3$ , we also observed a slight step in our ice melting data, which is supposed to have no physical meaning. Repeated measurements of these inclusions revealed significant variations of  $T_{hobs}$  after  $T_m^{ice}$  measurements that were not linked to corresponding changes of  $T_m^{ice}$ . Therefore, we consider these data not reliable. At saturation pressure, i.e., in presence of the vapour bubble,  $T_m^{ice}$  was measured at  $0.0 \pm 0.1$  °C, which is in agreement with pure water inclusions. The maximum temperature of final ice melting was measured at  $+6.8$  °C and thus corroborates a previously reported temperature of  $+6.5$  °C observed by Roedder<sup>33</sup> in metastable fluid inclusions.

### 3.4. Spontaneous bubble nucleation data

In the present study, spontaneous vapour bubble nucleation (or cavitation) occurred only in inclusions with  $T_{h\infty} > 145$  °C. Replicate measurements of  $T_{nr}^{vap}$  and  $T_{np}^{vap}$  revealed a reproducibility within  $\pm 3$  °C for individual inclusions. A comparison of different inclusions of similar density (i.e., similar  $T_{h\infty}$  values), however, revealed larger variations of up to  $10$  °C, though we found no correlation with the inclusion volume in the range of inclusion sizes we were looking at. In Table 3 (Appendix) and Fig. 9 we report the lowest  $T_{nr}^{vap}$  values measured in each inclusion and the highest values of  $T_{np}^{vap}$ , respectively. Retrograde bubble nucleation was observed  $80$  °C to  $90$  °C below  $T_{h\infty}$ , far away from the predicted liquid-spinodal.  $T_{nr}^{vap}$  can be observed only in a narrow range of inclusion densities  $\varrho_{bulk}$  between  $921.4$  and  $916.1$   $\text{kg/m}^3$ , corresponding to  $T_{h\infty}$  values between  $145.2$  and  $150.9$  °C. At lower bulk densities, i.e., higher  $T_{h\infty}$  prograde bubble nucleation cannot be measured anymore because in these inclusions the ice phase does not fully compensate the bubble volume and as a consequence ice melting occurs solely at saturation pressure and not at negative pressures in the metastable region. The temperature difference between  $T_{nr}^{vap}$  and  $T_{np}^{vap}$  tends to decrease with increasing density (decreasing  $T_{h\infty}$ ). An interpolation of our data suggests that  $T_{nr}^{vap}$  and  $T_{np}^{vap}$  become equal at around  $40$  °C. In the present study, the highest  $T_{h\infty}$  value of an inclusion that did not show spontaneous bubble nucleation was determined at  $142.4$  °C ( $924.0$   $\text{kg/m}^3$ ).

In addition, Fig. 9 also displays some  $T_{nr}^{vap}$  data from previous studies.<sup>10,12,13,31</sup> For the calculations of corresponding  $\varrho(T_{nr}^{vap})$  from these studies we treated  $T_{hobs}$  equal to  $T_{h\infty}$  since they only report  $T_{hobs}$  values. In fact in inclusions with  $\varrho < 930$   $\text{kg/m}^3$ , the relative difference in  $\varrho_{bulk}$  resulting from the difference between  $T_{hobs}$  and  $T_{h\infty}$  is less than  $0.05\%$ , and thus, is negligible. In contrast to our own data, the  $T_{nr}^{vap}$  values reported in ref. <sup>10,29</sup> and in Table. 1 of ref. <sup>13</sup> show a much larger scatter by several tens of degrees for different inclusions of similar densities. We therefore display only the lowest of these values in Fig. 9. The locus of the nucleation data points in the  $\varrho$ - $T$  plane appears to form a bubble nucleation (cavitation) curve that exhibits a maximum at around  $40$  °C (see discussion in section 4.4).

## 4. Discussion

### 4.1. Evaluation of saturation liquid densities in the supercooled region

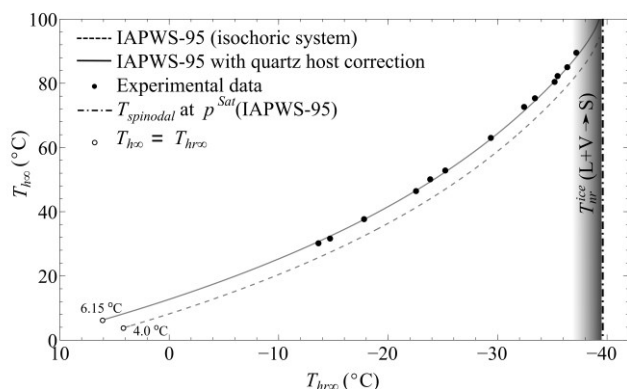


Fig. 10: Plot of  $T_{hrs}$  vs.  $T_{hrso}$ . Dashed line represents the prediction of IAPWS-95 for an isochoric system. Solid line results from an additional correction for the temperature-dependent volume change of the quartz host and is in excellent agreement with the  $T_{hrs}$ - $T_{hrso}$  data pairs obtained in this study (dots). Open circles indicate the temperatures at which  $T_{hrs}$  equals  $T_{hrso}$ : at 4.0 °C in an isochoric system, and at 6.15 °C in a quartz confined system. Vertical dash-dotted line: intersection of the liquid-vapour equilibrium curve with the liquid-spinodal at -39.6 °C. Grey shaded area: range of observed ice nucleation temperatures  $T_m^{ice}$  at saturation pressure  $p^{sat}$ .

Retrograde liquid-vapour homogenisation temperatures provide information on the  $\rho$ - $T$  trend of the liquid-vapour equilibrium curve in the supercooled region. To evaluate our data, we calculated  $T_{hrso}$  based on  $T_{hrso}$  and the reference bubble radius  $r(20^\circ\text{C})$  of the inclusion. The corresponding (prograde)  $T_{hrs}$  values were calculated accordingly from  $T_{hrso}$  using the same reference bubble radius. In this way we got two independent density determinations for the same inclusion. In Fig. 10, we compare the  $T_{hrs}$ - $T_{hrso}$  pairs obtained from high-density inclusions with a reference curve derived from IAPWS-95. To make the isochoric IAPWS-95 curve (dashed line) comparable to our fluid inclusion data, we applied a correction for the temperature-dependent volume change of the quartz host, which shifts the predicted  $T_{hrs}$ - $T_{hrso}$  curve to the left (solid line). The starting points of the two curves are defined by the temperatures at which  $T_{hrs}$  equals  $T_{hrso}$  (open circles). In the isochoric system this is at 4.0 °C, i.e. at the temperature of maximum density (TMD), whereas in the case of a quartz-confined system, the starting point is at 6.15 °C.<sup>35</sup> According to IAPWS-95 both curves end at -39.6 °C (vertical dash-dotted line), representing the temperature at which the liquid-spinodal intersects the liquid-vapour curve in the supercooled region. We remind that IAPWS-95 does not provide information on ice nucleation. In reality, ice nucleation in presence of the vapour bubble (L+V $\rightarrow$ S) was observed close to the alleged spinodal crossing, at temperatures in the grey shaded area between -37.8 and -39.6 °C.

Fig. 10 demonstrates that the  $T_{hrs}$ - $T_{hrso}$  data obtained in this study are in excellent agreement with IAPWS-95 (see also Fig. S-7, Supplementary Material), and thus, confirm the results of the IAPWS-95 formulation with respect to saturation liquid densities in the supercooled region. This finding suggests that the IAPWS-95 isochores for densities larger than 970 kg/m<sup>3</sup>, as drawn through the metastable region from  $T_{hrso}$  to  $T_{hrs}$ , through the temperature of maximum density, are essentially correct (the pseudo-isochore  $p(T|\rho=970\text{ kg/m}^3)$  is included in Fig. 12b). However, our data discussed in the following paragraphs indicate that the validity of the IAPWS-95 extrapolation becomes questionable when diving deeper into the stretched metastable region.

#### 4.2. Low-temperature trend of the liquid-spinodal

In Section 3.2 we have demonstrated that ice nucleation temperatures measured in low-density inclusions ( $\rho(T_{hr}^{ice}) \approx 955\text{ kg/m}^3$ )<sup>36</sup> are in the region where IAPWS-95 predicts an unstable thermodynamic state for liquid water. Therefore, our new experimental data clearly disprove the validity of the extrapolation of IAPWS-95 formulation into the doubly metastable region at densities much below 970 kg/m<sup>3</sup>. Of course, our finding does not disprove Speedy's conjecture of a re-entrant liquid-spinodal<sup>5</sup>. However, to explain the anomalies at -45 °C, the actual spinodal would have to be much more sloped in the  $\rho$ - $T$  representation than the IAPWS-95 spinodal (see Fig. 9), or cross to the positive pressure region through an ill-defined, possibly non-existent, extrapolation of the binodal, at densities below the density of ice at zero pressure.

#### 4.3. Ice melting curve

In Fig. 11 we have a closer look at the comparison of our ice melting data with the reference curve derived by extrapolation of equation 2.16 in Ref<sup>11</sup> into the metastable region. The solid curve represents a weighted polynomial fit to our data, namely

$$\rho(T_m^{ice}) = -0.01279T^4 + 0.1368T^3 - 0.06136T^2 - 9.637T + 1000$$

with  $\rho(T_m^{ice})$  in kg/m<sup>3</sup> and  $T$  in °C, validity range from 0.0 to 6.8 °C.

Data points that we regarded as less reliable (see section 3.1) were weighted low for curve fitting. The deviations from the reference increase with increasing  $T_m^{ice}$ , i.e., with decreasing density  $\rho(T_m^{ice})$  and are significantly larger than the uncertainty of the temperature measurements. At the present stage of research, it is hard to tell if these deviations mainly indicate the limits of the extrapolation, or if effects associated with the confinement of the ice-liquid system in a microscopic inclusion need to be considered.

One effect that definitely plays a role is elastic deformation of the inclusion walls under large tensile stress, which results in a volume decrease and thus an increase of the water density. To account for the difference between our data and the extrapolated curve we would have to assume elastic volume changes of up to 1.8 % which seems too much considering the maximum tensile stress of -130 MPa at  $T_m^{ice}$  in the lowest density inclusion (according to IAPWS-95). However, Burnley and Davis<sup>36</sup> have demonstrated that elastic volume changes of fluid inclusions depend not only on the magnitude of the differential stress but also on the size and the shape of the inclusions, the thickness of the inclusion walls and the orientation of the inclusions within an anisotropic crystal.

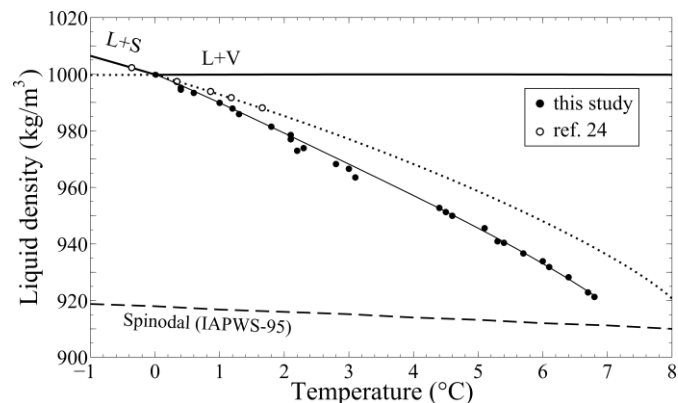


Fig. 11:  $\rho$ - $T$  diagram illustrating the deviation of our experimental ice melting data (dots) from the extrapolated reference curve<sup>23</sup> (dotted line). Solid line: weighted fit to our data.



The effect of surface tension at the ice-liquid interface might also have an impact on ice melting temperatures. Actually, one would expect that the surface tension affects ice melting in a similar way as it affects liquid-vapour homogenisation temperature. (Recall Sec. 2.4.2. and ref. 17). However, for high density inclusions with  $T_m^{ice}$  near zero our data approach the results of Henderson and Speedy<sup>24</sup> obtained in a macroscopic Berthelot tube. This may indicate that the surface tension at the ice-water interface is sufficiently small (estimates vary from 0.04 mN/m by van Oss et al.<sup>37</sup> to about 30 mN/m by Hardy,<sup>38</sup> compared to 75 mN/m for water), and the size of the inclusions sufficiently large to neglect the effect of surface tension. On the other hand, interfaces with the host material may also play a role.

Setting aside, for now, the question of the validity of the melting curve extrapolation, we conclude the discussion of ice melting by pointing out the following observation: The lowest melting points do nearly approach the IAPWS-95 spinodal, but nevertheless, the stretched ice melts into a homogeneous stretched liquid. This is yet another indication for the limitation of the IAPWS-95 extrapolation into the deeply stretched region. In the next section we shall have a closer look at this finding.

#### 4.4. Interpretation of spontaneous vapour bubble nucleation

Inspecting Fig. 12a, one finds that our measurements of the retrograde bubble nucleation temperatures  $T_{nr}^{vap}$  as a function of inclusion density  $\rho$  confirm the general trend observed in previous studies: The loci of the lowest retrograde nucleation temperatures determined for different inclusion densities appear to lay close to a “cavitation curve”  $T_{cav}(\rho)$  that decreases monotonically with increasing  $\rho$ , until no nucleation is observed for densities larger than 930 kg/m<sup>3</sup>. In particular, we confirm the data point denoted by Azouzi et al.,<sup>31</sup> which was obtained in a particularly thorough investigation of a nice (cylindrical) inclusion with a density of 928 kg/m<sup>3</sup>. An exception in the general trend is a singular inclusion from Zheng et al.,<sup>10</sup> which exhibited a record  $T_{nr}^{vap}$  of 40°C, despite its relatively small nominal density of about 910 kg/m<sup>3</sup>. When converting the  $\rho$ - $T$  data into  $p$ - $T$ , one obtains the frequently cited record cavitation pressure of -140 MPa. (Zheng et al. used for this the EOS of Haar et al.<sup>39</sup> Pressures shown in Fig. 12b have been recalculated using the IAPWS-95 formulation, which gives about -150 MPa.) However, a microphotograph in Zheng’s thesis<sup>29</sup> shows that the respective inclusion was exceptionally large and very flat. If this inclusion is close to the sample surface, the large area of thin quartz wall cannot resist high negative pressure at 40 °C and will be elastically curved into the inclusion, resulting in a comparatively large density increase. Note that in comparison to the inclusions analyzed in this study, an extra density increase of about 2% would be necessary to place the record data point into the gap between our retro- and prograde data. In view of this uncertainty we suggest to use for this density the second lowest temperature obtained by Zheng,<sup>29</sup> in another inclusion from the same sample, the data point enclosed in parenthesis in Fig. 12a and b.

A new finding of our study is the existence of prograde vapour bubble nucleation (cavitation) that occurs upon heating of metastable liquid inclusions above the ice melting temperature. The prograde  $T_{np}^{vap}(\rho)$  appears to slightly increase with increasing density, in contrast to the decreasing trend of retrograde  $T_{nr}^{vap}(\rho)$ . This finding suggests to associate the pro- and retrograde values with a single cavitation curve

$\rho_{cav}(T)$  which is not monotonic, but rather curved, exhibiting a maximum at around 40 °C. In our study we never reached this maximum, lacking samples with bulk densities in a small interval between 924 and 921 kg/m<sup>3</sup>; therefore, the gap. The thick grey line in Fig. 12a represents a suggestion for the  $\rho_{cav}(T)$  curve. The nucleation data for low density inclusions at high temperatures<sup>10</sup> are taken into account in a simplified fashion by requiring that  $\rho_{cav}(T)$  ends in the critical point.

The formation of the cavitation curve is illustrated in Fig. 12b, where we translated all  $\rho$ - $T$  values into  $p$ - $T$  using the IAPWS-95 formulation. The extrapolation of IAPWS-95 deep into the metastable region is questionable, but still the (pseudo-) isochores are qualitatively correct, exhibiting a pressure minimum close to the *TMD* line recently determined by Pallares et al.<sup>15</sup> Thus, our data are consistent with the following picture: When moving along an pseudo-isochore  $p(T|\rho)$ , disregarding if temperature is increased or decreased, cavitation will occur at a temperature  $T$  where the pressure  $p(T|\rho)$  approaches a certain critical value  $p_{cav}$ , which depends on temperature. In Fig. 12b the thick grey line is the proposed  $p_{cav}(T)$  curve obtained by IAPWS-95 transformation of  $\rho_{cav}(T)$  from Fig. 12a. While pseudo-isochores shown in Fig. 12b are curved, exhibiting a minimum at the *TMD* line, the cavitation curve  $p_{cav}(T)$  is a monotonic, gently curved function of temperature. Because of the difference in curvature, an isochore  $p(T|\rho)$  can intersect the cavitation curve  $p_{cav}(T)$  twice, or not at all. Unfortunately, it becomes not clear from our data whether or not  $p_{cav}(T)$  exhibits a pressure minimum at low temperatures. If so, the pressure minimum would be at a temperature below the intersection with *TMD* line predicted by IAPWS-95.

In Fig. 12a and b we plot for comparison one of the existing theoretical proposals for the cavitation curve, namely the “kinetic spinodal” by Kiselev and Ely.<sup>40</sup> The two kinetic spinodals were calculated based on IAPWS-95 but in addition take account of density fluctuations and the effect of the curvature of the liquid-vapour interface. The two grey dash-dotted curves, thus correspond to two values of the curvature parameter Tolman length ( $\delta_T$ ). Apparently, a kinetic spinodal with a Tolman length between 0 and 0.1 nm would coincide with our proposal at high temperatures, but at temperatures around the maximum of the  $\rho_{cav}(T)$  curve the differences become large. This could be due to the failure of the extrapolation of IAPWS-95 deep into the metastable region. Notice that the form of the two kinetic spinodals resembles the form of the re-entrant IAPWS-95 spinodal. In fact, it has been proposed (Caupin,<sup>41</sup> Caupin and Stroock<sup>42</sup>) to exploit the cavitation data to obtain information on the  $p$ - $T$  trend of the spinodal. Looking at our cavitation data from this point of view, we confirm our conclusion from ice nucleation data in Sec. 3.2: The actual spinodal, if re-entrant at all, must have its pressure minimum at a much lower temperature than predicted by IAPWS-95 and steeper negative slope at low temperatures.

However, we feel that one should not over-interpret the cavitation data and their theories. Unfortunately, there is still the unanswered question about the origin of the large difference in cavitation pressures obtained in microscopic inclusions and macroscopic Berthelot tubes or by the acoustical technique.<sup>42</sup> Thus one should remain open to a substantial revision of the theories of cavitation in the stretched state of water. Perhaps one should take explicitly into account the temperature dependence of the strength of the hydrogen bond,<sup>43</sup> which plays a role in the cohesion of water as well as in adhesion to the host material.



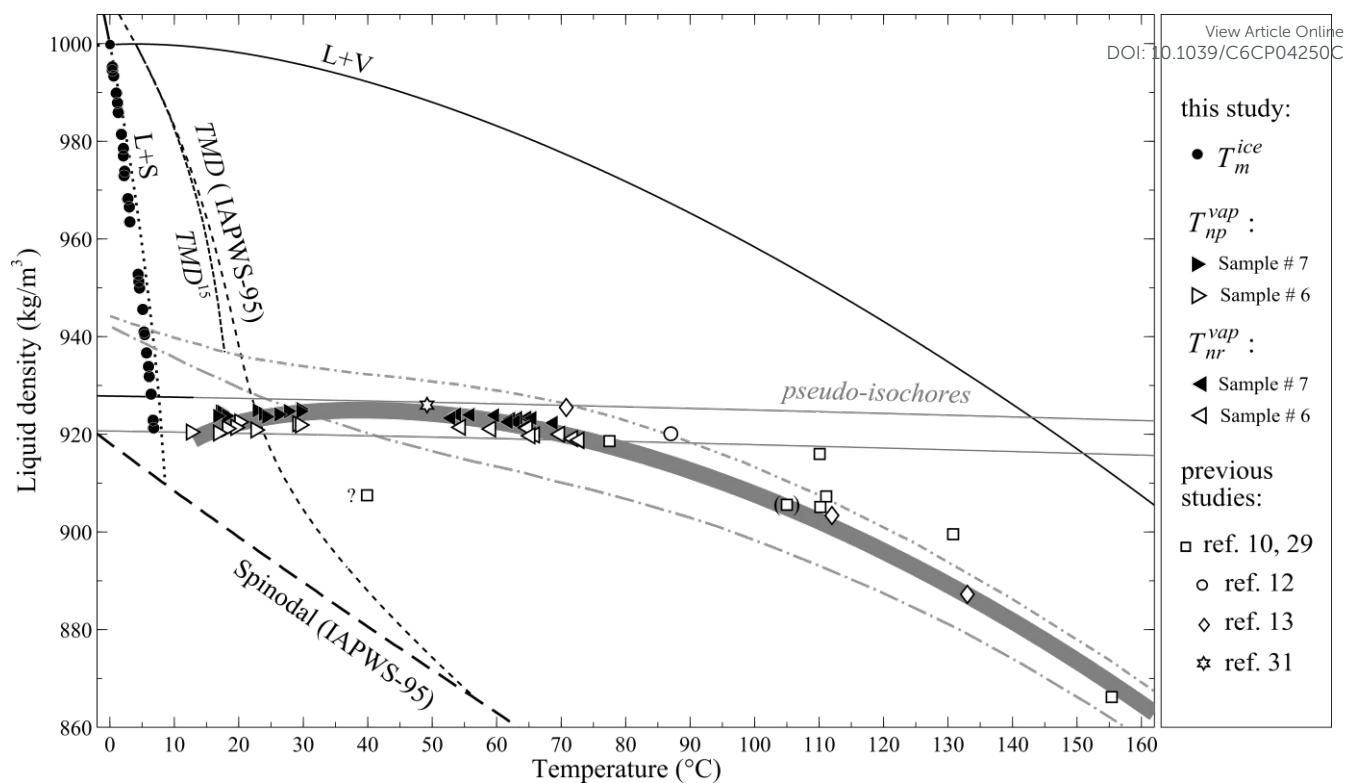


Fig. 12a: Enlarged detail of the  $q$ - $T$  phase diagram of water displaying the cavitation (bubble nucleation) curve  $q_{cav}(T)$  (thick grey curve) derived from experimental data of this and previous studies as well as final ice melting data (this study). The cavitation curve exhibits a maximum at around 40 °C. Besides the thermodynamic spinodal (dashed line, IAPWS-95), the diagram features two kinetic spinodals for  $\delta\tau = 0$  and  $+0.1\text{nm}^{40}$  (lower and upper grey dash-dotted curves, respectively). The two TMD lines (IAPWS-95 and Pallares et al.<sup>15</sup>) have negative slopes. As a guide to the eye the diagram displays two pseudo-isochores (solid, nearly horizontal grey lines) for  $T_{hx}$  of 143 and 151 °C, respectively. temperatures.

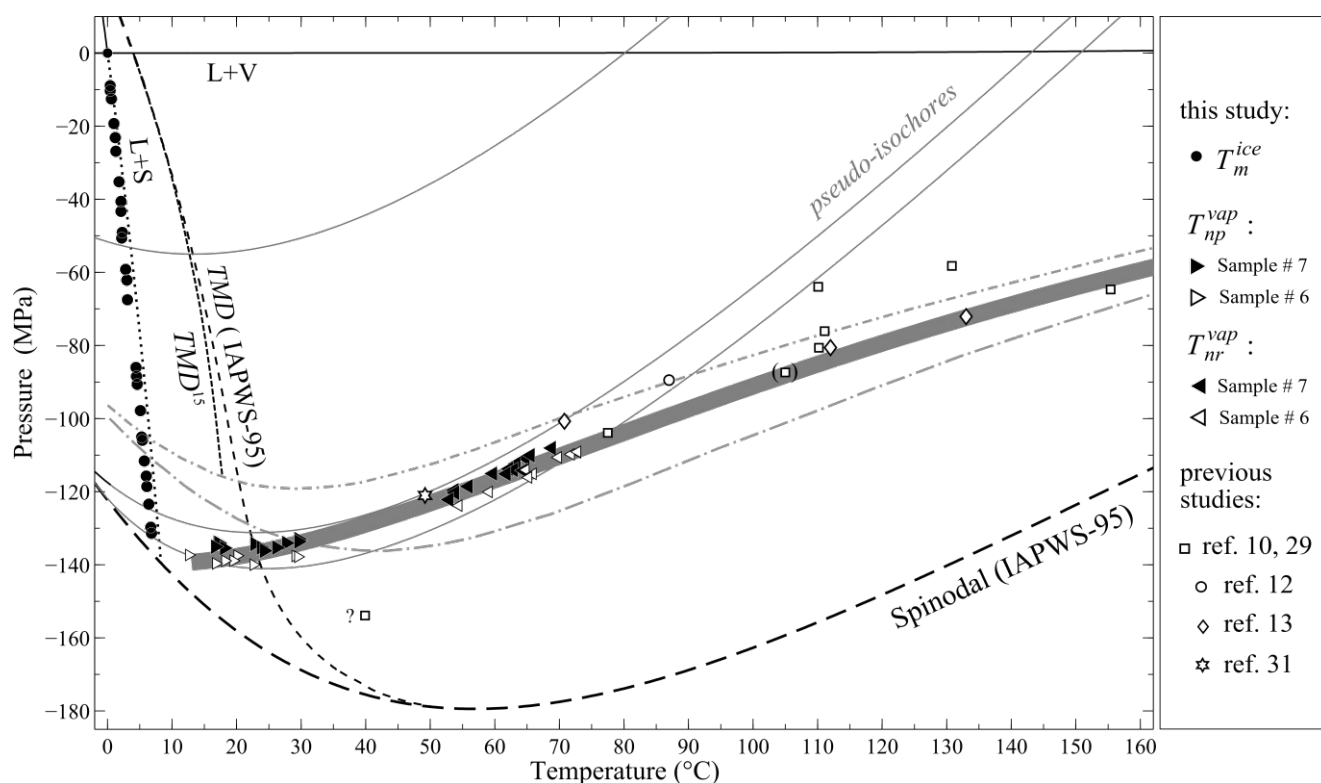


Fig. 12b:  $p$ - $T$  representation of the water phase diagram derived from Fig. 12a. The pseudo-isochores (solid grey curves) exhibit a pressure minimum while the cavitation curve  $p_{cav}(T)$  (thick grey line) is only gently curved. The two kinetic spinodals for  $\delta\tau = 0$  and  $+0.1\text{nm}^{40}$  (lower and upper grey dash-dotted curves, respectively) are illustrated as well.

## Conclusion

We presented a comprehensive fluid inclusion study that combines microthermometric measurements of homogenisation temperatures, both of prograde  $T_h$  and retrograde  $T_{hr}$ , temperatures of ice nucleation and melting ( $T_{nr}^{ice}$ ,  $T_m^{ice}$ ) as well as of spontaneous bubble nucleation upon cooling ( $T_{nr}^{vap}$ ) and for the first time, of prograde bubble nucleation upon heating ( $T_{np}^{vap}$ ). The set of our quartz samples provides a sufficiently broad range of inclusion densities to explore the low-temperature metastable region of liquid water. We compared the results of our study with the predictions of the IAPWS-95 formulation of the equation of state and the major findings are:

On the one hand we confirm IAPWS-95 concerning saturation liquid-densities in the supercooled region. Thus, IAPWS-95 seems to be appropriate for inclusion densities larger than 970 kg/m<sup>3</sup>.

On the other hand, we disprove the low-temperature trend of the liquid-spinodal predicted by IAPWS-95, by reason of inconsistency with ice nucleation data in the doubly metastable region. This finding is further supported by our ice melting data, demonstrating that ice melts into a homogeneous liquid even for low densities with a melting point close to the predicted spinodal. Such inclusions exhibit prograde vapour bubble nucleation upon heating, in addition to the well-known retrograde bubble nucleation upon cooling. The resulting bubble nucleation (or cavitation) curve is not monotonic in the  $p$ - $T$  representation, but exhibits a maximum at around 40 °C. (Is this related with the compressibility minimum?) The cavitation pressure curve  $p_{cav}(T)$ , obtained therefrom using IAPWS-95, is monotonic and only slightly curved.

Our findings do not allow the decision whether the spinodal is re-entrant or not. However, looking at the  $p$ - $T$  data in Fig.9, which are not affected by the questionable EOS extrapolation, one closing remark seems to be appropriate: Liquid water with a density of 921 kg/m<sup>3</sup> remains in a homogeneous state during cooling down to the temperature of -30.5 °C, where it is transformed into ice whose density correspond to zero pressure. Is this finding compatible with any of the proposed scenarios?

## Acknowledgements

We acknowledge the use of the P-GeoMatS Lab of the Geo.X partners GFZ and Universität Potsdam for pure water fluid inclusion synthesis.

Funding: This work was supported by the Swiss National Science Foundation [grant numbers 200021-140777/1].

## List of abbreviations

L	liquid phase
S	solid phase
V	vapour phase
Qtz	quartz host
TMD	temperature of maximum density
T	temperature ( °C)
V	volume (μm <sup>3</sup> )
p	Pressure (MPa)
ρ	Density (kg/m <sup>3</sup> )

## subscripts

obs	observed (measured) value
h	liquid-vapour homogenisation
n	nucleation
m	melting
∞	hypothetical value for infinitely large volumes
p	phase transition occurring upon heating
r	phase transition occurring upon cooling

View Article Online

DOI: 10.1039/C6CP04250C

## References

- C. A. Angell, *Water: a comprehensive treatise*, Plenum, New York, 1982, vol. 7.
- E. W. Lang and H.-D. Ludemann, *Angew. Chemie Int. Ed. English*, 1982, **21**, 315–388.
- R. J. Speedy and C. A. Angell, *J. Chem. Phys.*, 1976, **65**, 851.
- G. Pallares, M. El Mekki Azouzi, M. A. Gonzalez, J. L. Aragonés, J. L. F. Abascal, C. Valeriani and F. Caupin, *Proc. Natl. Acad. Sci.*, 2014, **111**, 7936–7941.
- R. J. Speedy, *J. Phys. Chem.*, 1982, **86**, 982–991.
- P. H. Poole, F. Sciortino, U. Essmann and H. E. Stanley, *Nature*, 1992, **360**, 324–328.
- B. Widom, in *Phase transitions and critical phenomena*, eds. C. Domb and M. S. Green, Academic Press, 1972.
- C. A. Angell, *Nat. Mater.*, 2014, **13**, 673–675.
- F. Caupin and E. Herbert, *Comptes Rendus Phys.*, 2006, **7**, 1000–1017.
- Q. Zheng, D. J. Durben, G. H. Wolf and C. A. Angell, *Science*, 1991, **254**, 829–32.
- W. Wagner and A. Pruss, *J. Phys. Chem. Ref. Data*, 2002, **31**, 387–535.
- J. L. Green, D. J. Durben, G. H. Wolf and C. A. Angell, *Science (80- )*, 1990, **249**, 649–652.
- K. I. Shmulovich, L. Mercury, R. Thiéry, C. Ramboz and M. El Mekki, *Geochim. Cosmochim. Acta*, 2009, **73**, 2457–2470.
- A. D. Alvarenga, M. Grimsditch and R. J. Bodnar, *J. Chem. Phys.*, 1993, **98**, 8392–8396.
- G. Pallares, M. A. Gonzalez, J. L. F. Abascal, C. Valeriani and F. Caupin, *Phys. Chem. Chem. Phys.*, 2016, **18**, 5896–5900.
- Y. Krüger, P. Stoller, J. Rička and M. Frenz, *Eur. J. Mineral.*, 2007, **19**, 693–706.
- D. Marti, Y. Krüger, D. Fleitmann, M. Frenz and J. Rička, *Fluid Phase Equilib.*, 2012, **314**, 13–21.
- S. M. Sterner and R. J. Bodnar, *Geochim. Cosmochim. Acta*, 1984, **48**, 2659–2668.
- R. J. Bodnar and S. M. Sterner, in *Hydrothermal experimental techniques*, eds. G. C. Ulmer and H. L. Barnes, J. Wiley & Sons, 1987, pp. 423–457.
- G. Morrison, *J. Phys. Chem.*, 1981, **85**, 759–761.
- R. H. Goldstein and T. J. Reynolds, in *Society for Sedimentary Geology*, 1994, p. 94.
- R. Feistel and W. Wagner, *J. Phys. Chem. Ref. Data*, 2006, **35**, 1021–1047.
- W. Wagner, A. Saul and A. Pruss, *J. Phys. Chem. Ref. Data*, 1994, **23**, 515.

- 24 S. J. Henderson and R. J. Speedy, *J. Phys. Chem.*, 1987, **91**, 3069–3072.
- 25 A. Fall, J. D. Rimstidt and R. J. Bodnar, *Am. Mineral.*, 2009, **94**, 1569–1579.
- 26 P. Stoller, Y. Krüger, J. Rička and M. Frenz, *Earth Planet. Sci. Lett.*, 2007, **253**, 359–368.
- 27 P. D. Desai, in *HTMIAC Special Report 40*, 1990.
- 28 F. Spadin, D. Marti, R. Hidalgo-Staub, J. Rička, D. Fleitmann and M. Frenz, *Clim. Past*, 2015, **11**, 905–913.
- 29 Q. Zheng, PhD Thesis, Department of Chemistry, Purdue University, 1991.
- 30 H. Kanno and K. Miyata, *Chem. Phys. Lett.*, 2006, **422**, 507–512.
- 31 M. E. M. Azouzi, C. Ramboz, J.-F. Lenain and F. Caupin, *Nat. Phys.*, 2013, **9**, 38–41.
- 32 S. J. Henderson and R. J. Speedy, *J. Phys. Chem.*, 1987, **17**, 3062–3068.
- 33 E. Roedder, *Science (80-. )*, 1967, 155, 1413–1417.
- 34 M. S. Barrow, P. R. Williams, H.-H. Chan, J. C. Dore and M.-C. Bellissent-Funel, *Phys. Chem. Chem. Phys.*, 2012, **14**, 13255–61.
- 35 D. Marti, Y. Krüger and M. Frenz, in *ECROFI*, Granada (Spain), 2009, pp. 4–5.
- 36 P. C. Burnley and M. K. Davis, *Can. Mineral.*, 2004, **42**, 1369–1382.
- 37 C. J. Van Oss, R. F. Giese, R. Wentzek, J. Norris and E. M. Chuvilin, *J. Adhes. Sci. Technol.*, 1992, **6**, 503–516.
- 38 S. C. Hardy, *Philos. Mag.*, 1977, **35**, 471–484.
- 39 L. Haar, J. Gallagher and G. S. Kell, *National Bureau of Standard-National Research Council Steam Tables*, McGraw-Hill: New York, 1985.
- 40 S. B. Kiselev and J. F. Ely, *Phys. A Stat. Mech. its Appl.*, 2001, **299**, 357–370.
- 41 F. Caupin, *Phys. Rev. E - Stat. Nonlinear, Soft Matter Phys.*, 2005, **71**, 1–5.
- 42 F. Caupin and A. Stroock, *Adv. Chem. Physics, Liq.*, 2013, **152**, 51–80.
- 43 R. C. Dougherty, *J. Chem. Phys.*, 1998, **109**, 7372–7378.

View Article Online  
DOI: 10.1039/C6CP04250C

## Appendix

Table 1: Results of the micro thermometric measurements of prograde and retrograde liquid-vapour homogenisation  $T_{hobs}$  and  $T_{hrobs}$ , (retrograde) ice nucleation  $T_{nr}^{ice}$ , and final ice melting  $T_m^{ice}$  of 26 fluid inclusions. Temperature accuracies are estimated based on the calibration of the heating/freezing stage. Vapour bubble radii  $r(T)$  refer to a temperature of 20 °C and were derived from theoretical radius curves fitted to the measured values.  $T_{h\infty}$ ,  $T_{hr\infty}$  and the volume  $V$  of the inclusions were calculated using the model of Marti et al.<sup>17</sup> Due to the small size of the inclusions, the uncertainty of the bubble radius measurements ( $\pm 0.15 \mu\text{m}$ ) results in large relative errors of the inclusion volumes. However, the effect of the volume error on  $T_{h\infty}$  and  $T_{hr\infty}$  is small. The overall uncertainty of  $T_{h\infty}$  and  $T_{hr\infty}$  given in the table comprises the error relating to the temperature accuracy of the stage, the error resulting from the volume uncertainty, and an additional uncertainty associated with the vapour bubble collapse (see section S-2.4.2, Supplementary Material). The density of the water at  $T_{nr}^{ice}$  and at  $T_m^{ice}$  was determined from  $T_{h\infty}$  by applying a correction for the temperature-dependent volume change of the quartz host. Note that the densities assigned to  $T_m^{ice}$  were determined from re-measurements of  $T_{hobs}$  performed after ice melting to account for potential volume increases of the inclusions resulting from ice nucleation. In particular high-density inclusions with  $T_{h\infty} < 90$  °C were often subject to irreversible volume changes, and thus, the densities at  $T_m^{ice}$  are not relating to the initial  $T_{h\infty}$  values reported in the table. For low-density inclusions that did not stretch due to ice nucleation Table 1 reports only the lowest  $T_{nr}^{ice}$  value measured in each inclusion considering these minimum temperatures as the closest approximation to homogeneous ice nucleation.

inclusion	$T_{hobs}$ (L+V→L) °C	$T_{hrobs}$ (L+V→L) °C	$T_{nr}^{ice}$ (L→S) ±0.2 °C	$T_m^{ice}$ (L+S→L) ±0.1 °C	$r(@20^\circ\text{C})$ ±0.15µm	$T_{h\infty}$ °C	$T_{hr\infty}$ °C	$V$ µm <sup>3</sup>	$\rho_{bulk}(T_{h\infty})$ kg/m <sup>3</sup>	$\rho(T_{nr}^{ice})$ kg/m <sup>3</sup>	$\rho(T_m^{ice})$ kg/m <sup>3</sup>
13-2-3	28.7±0.1	-12.4±0.1	-43.3	0.4	0.61	30.18 <sup>+0.46</sup> <sub>-0.32</sub>	-13.63 <sup>-0.39</sup> <sub>+0.29</sub>	450 <sup>-260</sup> <sub>+400</sub>	995.55 <sup>-0.14</sup> <sub>+0.10</sub>	997.75 <sup>-0.13</sup> <sub>+0.09</sub>	995.23 <sup>-0.12</sup> <sub>+0.10</sub>
13-2-2	29.8±0.1	-13.2±0.1	-43.3	0.4	0.46	31.64 <sup>+0.72</sup> <sub>-0.46</sub>	-14.70 <sup>-0.60</sup> <sub>+0.38</sub>	160 <sup>-110</sup> <sub>+230</sub>	995.10 <sup>-0.23</sup> <sub>+0.15</sub>	997.34 <sup>-0.21</sup> <sub>+0.13</sub>	994.53 <sup>-0.18</sup> <sub>+0.11</sub>
13-3-3	36.4±0.2	-16.8±0.1	-43.0	0.6	0.70	37.67 <sup>+0.45</sup> <sub>-0.37</sub>	-17.80 <sup>-0.29</sup> <sub>+0.23</sub>	330 <sup>-170</sup> <sub>+260</sub>	993.05 <sup>-0.15</sup> <sub>+0.14</sub>	995.44 <sup>-0.15</sup> <sub>+0.12</sub>	993.37 <sup>-0.15</sup> <sub>+0.12</sub>
13-3-4	45.0±0.2	-21.5±0.2	-42.4	1.0	0.55	46.42 <sup>+0.58</sup> <sub>-0.43</sub>	-22.55 <sup>-0.37</sup> <sub>+0.37</sub>	90 <sup>-60</sup> <sub>+100</sub>	989.57 <sup>-0.25</sup> <sub>+0.19</sub>	992.22 <sup>-0.23</sup> <sub>+0.17</sub>	989.86 <sup>-0.23</sup> <sub>+0.17</sub>
2-2-6	49.2±0.2	-23.2±0.2	-42.1	1.1	0.99	50.09 <sup>+0.31</sup> <sub>-0.29</sub>	-23.84 <sup>-0.28</sup> <sub>+0.26</sub>	430 <sup>-160</sup> <sub>+250</sub>	987.96 <sup>-0.14</sup> <sub>+0.13</sub>	990.70 <sup>-0.13</sup> <sub>+0.12</sub>	985.90 <sup>-0.12</sup> <sub>+0.12</sub>
14-1-4	51.4±0.2	-24.2±0.2	-42.3	1.2	0.51	52.85 <sup>+0.62</sup> <sub>-0.46</sub>	-25.22 <sup>-0.49</sup> <sub>+0.37</sub>	70 <sup>-30</sup> <sub>+70</sub>	986.68 <sup>-0.29</sup> <sub>+0.22</sub>	989.51 <sup>-0.28</sup> <sub>+0.20</sub>	987.87 <sup>-0.27</sup> <sub>+0.20</sub>
14-1-3	61.8±0.2	-28.6±0.2	-41.1	1.8	0.61	63.00 <sup>+0.47</sup> <sub>-0.39</sub>	-29.39 <sup>-0.37</sup> <sub>+0.32</sub>	60 <sup>-30</sup> <sub>+60</sub>	981.59 <sup>-0.25</sup> <sub>+0.21</sub>	984.68 <sup>-0.26</sup> <sub>+0.18</sub>	981.45 <sup>-0.24</sup> <sub>+0.20</sub>
2-1-3	71.8±0.2	-31.9±0.2	-40.4	2.1	0.91	72.64 <sup>+0.32</sup> <sub>-0.29</sub>	-32.42 <sup>-0.27</sup> <sub>+0.25</sub>	160 <sup>-70</sup> <sub>+90</sub>	976.21 <sup>-0.19</sup> <sub>+0.17</sub>	979.55 <sup>-0.18</sup> <sub>+0.16</sub>	978.51 <sup>-0.18</sup> <sub>+0.16</sub>
2-1-3c	74.5±0.2	-32.9±0.2	-40.1	2.1	0.91	75.34 <sup>+0.31</sup> <sub>-0.30</sub>	-33.42 <sup>-0.27</sup> <sub>+0.25</sub>	150 <sup>-60</sup> <sub>+90</sub>	974.61 <sup>-0.18</sup> <sub>+0.18</sub>	978.02 <sup>-0.18</sup> <sub>+0.17</sub>	977.00 <sup>-0.17</sup> <sub>+0.17</sub>
8-1-4	79.9±0.2	-34.9±0.2	-39.7	2.3	1.60	80.44 <sup>+0.24</sup> <sub>-0.23</sub>	-35.21 <sup>-0.22</sup> <sub>+0.22</sub>	690 <sup>-180</sup> <sub>+230</sub>	971.49 <sup>-0.15</sup> <sub>+0.15</sub>	975.06 <sup>-0.16</sup> <sub>+0.12</sub>	973.87 <sup>-0.14</sup> <sub>+0.14</sub>
2-1-4c	81.6±0.2	-35.1±0.2	-39.8	2.2	1.20	82.26 <sup>+0.27</sup> <sub>-0.26</sub>	-35.48 <sup>-0.24</sup> <sub>+0.23</sub>	280 <sup>-90</sup> <sub>+120</sub>	970.35 <sup>-0.17</sup> <sub>+0.16</sub>	973.94 <sup>-0.16</sup> <sub>+0.16</sub>	972.94 <sup>-0.16</sup> <sub>+0.16</sub>
8-1-1	88.8±0.2	-36.8±0.2	-38.5	2.8	1.05	89.52 <sup>+0.28</sup> <sub>-0.27</sub>	-37.19 <sup>-0.24</sup> <sub>+0.23</sub>	160 <sup>-60</sup> <sub>+80</sub>	965.62 <sup>-0.19</sup> <sub>+0.18</sub>	969.37 <sup>-0.17</sup> <sub>+0.19</sub>	968.24 <sup>-0.18</sup> <sub>+0.17</sub>
8-1-7	91.7±0.2	n.o.	-37.7	3.0	2.04	92.42 <sup>+0.28</sup> <sub>-0.27</sub>	-	150 <sup>-60</sup> <sub>+70</sub>	963.66 <sup>-0.19</sup> <sub>+0.18</sub>	967.49 <sup>-0.19</sup> <sub>+0.18</sub>	966.55 <sup>-0.19</sup> <sub>+0.17</sub>
8-2-7	94.8±0.2	n.o.	-37.3	3.1	1.35	95.38 <sup>+0.25</sup> <sub>-0.25</sub>	-	310 <sup>-90</sup> <sub>+100</sub>	961.61 <sup>-0.18</sup> <sub>+0.17</sub>	965.51 <sup>-0.17</sup> <sub>+0.17</sub>	963.50 <sup>-0.17</sup> <sub>+0.17</sub>
10-5-6	111.5±0.3	n.o.	-36.1	4.4	1.14	112.14 <sup>+0.36</sup> <sub>-0.36</sub>	-	140 <sup>-50</sup> <sub>+60</sub>	949.31 <sup>-0.28</sup> <sub>+0.28</sub>	953.62 <sup>-0.27</sup> <sub>+0.27</sub>	952.74 <sup>-0.27</sup> <sub>+0.27</sub>
10-5-4	113.5±0.3	n.o.	-35.9	4.5	1.18	114.11 <sup>+0.37</sup> <sub>-0.35</sub>	-	150 <sup>-50</sup> <sub>+60</sub>	947.78 <sup>-0.29</sup> <sub>+0.27</sub>	952.13 <sup>-0.28</sup> <sub>+0.27</sub>	951.26 <sup>-0.27</sup> <sub>+0.26</sub>
4-2-6	115.2±0.3	n.o.	-36.1	4.6	1.07	115.86 <sup>+0.38</sup> <sub>-0.36</sub>	-	100 <sup>-40</sup> <sub>+50</sub>	946.41 <sup>-0.30</sup> <sub>+0.28</sub>	950.81 <sup>-0.29</sup> <sub>+0.28</sub>	949.94 <sup>-0.29</sup> <sub>+0.27</sub>
4-2-4	120.9±0.3	n.o.	-35.2	5.1	1.19	121.50 <sup>+0.36</sup> <sub>-0.35</sub>	-	130 <sup>-50</sup> <sub>+60</sub>	941.46 <sup>-0.30</sup> <sub>+0.28</sub>	946.42 <sup>-0.29</sup> <sub>+0.28</sub>	945.58 <sup>-0.29</sup> <sub>+0.27</sub>



Continue Table. 1											
4-1-3	126.7±0.3	n.o.	-34.1	5.3	1.12	127.32 <sup>+0.37</sup> <sub>-0.35</sub>	-	100 <sup>-30</sup> <sub>+50</sub>	937.09 <sup>-0.31</sup> <sub>+0.30</sub>	941.77 <sup>-0.30</sup> <sub>+0.29</sub>	940.94 <sup>-0.30</sup> <sub>+0.29</sub>
7-7-10	127.4±0.3	n.o.	-34.4	5.4	1.20	127.99 <sup>+0.36</sup> <sub>-0.35</sub>	-	130 <sup>-40</sup> <sub>+50</sub>	936.53 <sup>-0.30</sup> <sub>+0.29</sub>	941.21 <sup>-0.30</sup> <sub>+0.28</sub>	940.40 <sup>-0.29</sup> <sub>+0.28</sub>
4-1-7	132.1±0.3	n.o.	-33.1	5.7	1.80	132.53 <sup>+0.33</sup> <sub>-0.32</sub>	-	400 <sup>-90</sup> <sub>+100</sub>	932.67 <sup>-0.28</sup> <sub>+0.28</sub>	937.44 <sup>-0.27</sup> <sub>+0.27</sub>	936.65 <sup>-0.27</sup> <sub>+0.27</sub>
4-1-6	135.2±0.3	n.o.	-32.3	6.0	1.11	135.82 <sup>+0.37</sup> <sub>-0.36</sub>	-	90 <sup>-30</sup> <sub>+40</sub>	929.83 <sup>-0.32</sup> <sub>+0.31</sub>	934.66 <sup>-0.31</sup> <sub>+0.30</sub>	933.89 <sup>-0.31</sup> <sub>+0.30</sub>
4-1-1	137.8±0.3	n.o.	-32.1	6.1	1.82	138.22 <sup>+0.33</sup> <sub>-0.32</sub>	-	380 <sup>-90</sup> <sub>+100</sub>	927.71 <sup>-0.29</sup> <sub>+0.29</sub>	932.60 <sup>-0.28</sup> <sub>+0.28</sub>	931.84 <sup>-0.28</sup> <sub>+0.28</sub>
4-1-4	141.9±0.3	n.o.	-31.4	6.4	1.52	142.38 <sup>+0.34</sup> <sub>-0.33</sub>	-	210 <sup>-60</sup> <sub>+70</sub>	924.00 <sup>-0.31</sup> <sub>+0.30</sub>	928.98 <sup>-0.30</sup> <sub>+0.29</sub>	928.23 <sup>-0.30</sup> <sub>+0.29</sub>
6-2-4	148.0±0.3	n.o.	-30.7	6.7	1.86	148.41 <sup>+0.33</sup> <sub>-0.32</sub>	-	360 <sup>-80</sup> <sub>+100</sub>	918.49 <sup>-0.30</sup> <sub>+0.30</sub>	923.60 <sup>-0.30</sup> <sub>+0.29</sub>	922.88 <sup>-0.29</sup> <sub>+0.29</sub>
6-2-1	149.7±0.3	n.o.	-30.5	6.8	1.55	150.17 <sup>+0.34</sup> <sub>-0.33</sub>	-	201 <sup>-53</sup> <sub>+65</sub>	916.85 <sup>-0.32</sup> <sub>+0.31</sub>	922.00 <sup>-0.31</sup> <sub>+0.30</sub>	921.28 <sup>-0.31</sup> <sub>+0.30</sub>

Table. 2: Ice nucleation temperatures  $T_{nr}^{ice}$  of 23 inclusions measured at saturation pressure, i.e. in presence of the vapour bubble (L+V→S). We report the lowest  $T_{nr}^{ice}$  values measured in each inclusion. In addition, the table lists  $T_{h\infty}$ , the volume  $V$  of the inclusions, and the bubble radius  $r(T)$  at  $T_{nr}^{ice}$ .

inclusion	$T_{nr}^{ice}$ (L+V→S) ±0.2 °C	$T_{h\infty}$ °C	$V$ $\mu\text{m}^3$	$r(T_{nr}^{ice})$ ±0.15 $\mu\text{m}$
7-2-1	-37.8	145.75 <sup>+0.33</sup> <sub>-0.33</sub>	250 <sup>-60</sup> <sub>+80</sub>	1.36
7-6-1	-38.1	145.70 <sup>+0.32</sup> <sub>-0.32</sub>	420 <sup>-90</sup> <sub>+100</sub>	1.64
7-6-6	-38.3	146.10 <sup>+0.37</sup> <sub>-0.35</sub>	80 <sup>-30</sup> <sub>+40</sub>	0.94
7-6-5	-38.3	146.14 <sup>+0.35</sup> <sub>-0.34</sub>	120 <sup>-40</sup> <sub>+50</sub>	1.06
7-6-3	-38.1	146.21 <sup>+0.33</sup> <sub>-0.32</sub>	360 <sup>-80</sup> <sub>+100</sub>	1.52
7-6-9	-38.5	146.45 <sup>+0.33</sup> <sub>-0.33</sub>	250 <sup>-60</sup> <sub>+80</sub>	1.39
7-6-7	-38.5	147.12 <sup>+0.38</sup> <sub>-0.36</sub>	70 <sup>-30</sup> <sub>+30</sub>	0.90
7-2-2	-37.9	147.14 <sup>+0.33</sup> <sub>-0.32</sub>	280 <sup>-70</sup> <sub>+80</sub>	1.42
7-6-4	-38.4	147.14 <sup>+0.34</sup> <sub>-0.33</sub>	270 <sup>-70</sup> <sub>+80</sub>	1.40
6-2-4	-38.4	148.31 <sup>+0.33</sup> <sub>-0.32</sub>	360 <sup>-80</sup> <sub>+100</sub>	1.59
6-2-7	-38.7	148.47 <sup>+0.36</sup> <sub>-0.35</sub>	100 <sup>-30</sup> <sub>+40</sub>	1.02
6-2-5	-39.0	148.62 <sup>+0.37</sup> <sub>-0.36</sub>	70 <sup>-20</sup> <sub>+30</sub>	0.90
6-2-6	-39.1	148.87 <sup>+0.36</sup> <sub>-0.35</sub>	100 <sup>-30</sup> <sub>+40</sub>	1.03
6-3-8	-39.5	149.71 <sup>+0.35</sup> <sub>-0.34</sub>	140 <sup>-40</sup> <sub>+50</sub>	1.12
6-3-9	-39.6	150.01 <sup>+0.35</sup> <sub>-0.34</sub>	140 <sup>-40</sup> <sub>+50</sub>	1.14
6-2-3	-38.7	150.21 <sup>+0.37</sup> <sub>-0.36</sub>	70 <sup>-30</sup> <sub>+30</sub>	0.91
6-2-2	-38.8	151.04 <sup>+0.38</sup> <sub>-0.36</sub>	60 <sup>-20</sup> <sub>+30</sub>	0.87

PAPER

PCCP

Continue Table. 2				
6-3-13	-39.6	$150.99^{+0.35}_{-0.34}$	$120^{+40}_{-50}$	1.10
6-2-1	-38.9	$150.92^{+0.35}_{-0.34}$	$130^{+40}_{-50}$	1.13
4-2-4	-39.2	$121.50^{+0.36}_{-0.35}$	$130^{+50}_{-60}$	0.86
4-2-6	-39.1	$115.86^{+0.38}_{-0.36}$	$100^{+40}_{-50}$	0.72
8-2-7	-39.2	$95.38^{+0.25}_{-0.25}$	$310^{+90}_{-100}$	0.55
10-5-6	-38.2	$112.14^{+0.36}_{-0.36}$	$140^{+50}_{-60}$	0.71

Table 3: Retrograde and prograde bubble nucleation temperatures  $T_{nr}^{vap}$  and  $T_{np}^{vap}$  of 22 inclusions. The tabulated  $T_{nr}^{vap}$  values represent the lowest temperatures measured for each inclusion whereas for prograde bubble nucleation the highest  $T_{np}^{vap}$  values are reported. In addition, the table lists the corresponding  $T_{h\infty}$  values, the inclusion volume  $V$ , the bubble radius  $r$  at 20 °C as well as the water densities  $\rho(T)$  at  $T_{h\infty}$ ,  $T_{nr}^{vap}$  and  $T_{np}^{vap}$ , respectively.

inclusion	$T_{nr}^{vap}$ (L→L+V) ±0.2 °C	$T_{np}^{vap}$ (L→L+V) ±0.1 °C	$r(20^\circ\text{C})$ ±0.15µm	$T_{h\infty}$ °C	$V$ µm <sup>3</sup>	$\rho_{bulk}(T_{h\infty})$ kg/m <sup>3</sup>	$\rho(T_{nr}^{vap})$ kg/m <sup>3</sup>	$\rho(T_{np}^{vap})$ kg/m <sup>3</sup>
7-6-2	53.7	29.6	1.86	$145.21^{+0.33}_{-0.32}$	$370^{+80}_{-100}$	$921.43^{+0.30}_{-0.30}$	$924.50^{+0.29}_{-0.29}$	$925.17^{+0.29}_{-0.29}$
7-2-1	55.9	22.7	1.64	$145.75^{+0.33}_{-0.33}$	$250^{+60}_{-80}$	$920.94^{+0.31}_{-0.30}$	$923.96^{+0.30}_{-0.29}$	$924.74^{+0.31}_{-0.49}$
7-6-1	59.7	22.8	1.94	$145.70^{+0.32}_{-0.32}$	$420^{+90}_{-100}$	$920.99^{+0.30}_{-0.29}$	$923.89^{+0.29}_{-0.28}$	$924.91^{+0.29}_{-0.29}$
7-6-10	53.8	29.6	1.82	$145.72^{+0.33}_{-0.32}$	$350^{+80}_{-100}$	$920.97^{+0.30}_{-0.30}$	$924.05^{+0.29}_{-0.29}$	$924.72^{+0.29}_{-0.29}$
7-6-6	64.7	17.2	1.13	$146.10^{+0.37}_{-0.35}$	$80^{+30}_{-40}$	$920.62^{+0.34}_{-0.32}$	$923.39^{+0.33}_{-0.31}$	$924.69^{+0.33}_{-0.31}$
7-6-5	65.5	17.1	1.28	$146.14^{+0.35}_{-0.34}$	$120^{+40}_{-50}$	$920.58^{+0.32}_{-0.31}$	$923.32^{+0.31}_{-0.30}$	$924.66^{+0.31}_{-0.30}$
7-6-3	63.3	17.3	1.85	$146.21^{+0.33}_{-0.32}$	$360^{+80}_{-100}$	$920.52^{+0.30}_{-0.30}$	$923.33^{+0.29}_{-0.29}$	$924.59^{+0.29}_{-0.29}$
7-6-9	62.2	23.8	1.63	$146.45^{+0.33}_{-0.33}$	$250^{+60}_{-80}$	$920.30^{+0.31}_{-0.30}$	$923.15^{+0.30}_{-0.29}$	$924.21^{+0.30}_{-0.29}$
7-6-8	52.9	26.2	2.15	$146.57^{+0.32}_{-0.32}$	$560^{+110}_{-130}$	$920.19^{+0.29}_{-0.29}$	$923.32^{+0.28}_{-0.28}$	$924.05^{+0.29}_{-0.29}$
7-6-7	62.9	18.1	1.06	$147.12^{+0.38}_{-0.36}$	$70^{+30}_{-30}$	$919.68^{+0.35}_{-0.33}$	$922.53^{+0.33}_{-0.32}$	$923.76^{+0.34}_{-0.32}$
7-2-2	61.8	24.3	1.70	$147.14^{+0.33}_{-0.32}$	$280^{+70}_{-80}$	$919.66^{+0.31}_{-0.30}$	$922.55^{+0.30}_{-0.29}$	$923.59^{+0.30}_{-0.29}$
7-6-4	68.8	16.7	1.68	$147.14^{+0.34}_{-0.33}$	$270^{+70}_{-80}$	$919.66^{+0.31}_{-0.30}$	$922.33^{+0.30}_{-0.29}$	$923.77^{+0.30}_{-0.29}$
6-2-4	64.4	n.o.	1.88	$148.31^{+0.33}_{-0.32}$	$360^{+80}_{-100}$	$918.58^{+0.30}_{-0.30}$	$921.43^{+0.29}_{-0.29}$	-
6-2-7	64.8	20.1	1.20	$148.47^{+0.36}_{-0.35}$	$100^{+30}_{-40}$	$918.43^{+0.33}_{-0.32}$	$921.27^{+0.32}_{-0.31}$	$922.50^{+0.32}_{-0.31}$
6-2-5	54.4	29.1	1.07	$148.62^{+0.37}_{-0.36}$	$70^{+20}_{-30}$	$918.29^{+0.35}_{-0.33}$	$921.44^{+0.34}_{-0.32}$	$922.14^{+0.34}_{-0.32}$
6-2-6	59.1	29.5	1.20	$148.87^{+0.36}_{-0.35}$	$100^{+30}_{-40}$	$918.06^{+0.33}_{-0.32}$	$921.08^{+0.32}_{-0.31}$	$921.91^{+0.32}_{-0.31}$
6-3-8	69.8	19.5	1.38	$149.71^{+0.35}_{-0.34}$	$140^{+40}_{-50}$	$917.28^{+0.32}_{-0.31}$	$920.00^{+0.31}_{-0.30}$	$921.40^{+0.31}_{-0.31}$

PCCP

PAPER

6-3-9	65.9	18.2	1.38	$150.01^{+0.35}_{-0.34}$	$140^{+40}_{-50}$	$917.00^{+0.32}_{-0.32}$	$919.85^{+0.31}_{-0.30}$	$921.16^{+0.31}_{-0.31}$
Continue Table. 3								
6-2-3	65.2	22.6	1.09	$150.21^{+0.37}_{-0.36}$	$70^{+30}_{-30}$	$916.81^{+0.33}_{-0.35}$	$919.69^{+0.32}_{-0.34}$	$920.87^{+0.32}_{-0.34}$
6-2-2	72.8	16.8	1.01	$151.04^{+0.38}_{-0.36}$	$60^{+20}_{-30}$	$916.03^{+0.34}_{-0.36}$	$918.70^{+0.33}_{-0.35}$	$920.25^{+0.33}_{-0.35}$
6-3-13	71.8	n.o.	1.29	$150.99^{+0.35}_{-0.34}$	$120^{+40}_{-50}$	$916.41^{+0.32}_{-0.33}$	$919.10^{+0.31}_{-0.32}$	-
6-2-1	72.8	12.6	1.35	$150.92^{+0.35}_{-0.34}$	$130^{+40}_{-50}$	$916.15^{+0.32}_{-0.33}$	$918.81^{+0.31}_{-0.32}$	$920.46^{+0.31}_{-0.32}$