

The deep human prehistory of global tropical forests and its relevance for modern conservation

Patrick Roberts^{1*}, Chris Hunt², Manuel Arroyo-Kalin³, Damian Evans⁴, Nicole Boivin¹

¹ Max Planck Institute for the Science of Human History, Jena, Germany

² Liverpool John Moores University, Liverpool, United Kingdom

³ University College London, London, United Kingdom

⁴ École française d'Extrême-Orient, Paris, France

*correspondence to: Patrick Roberts
Max Planck Institute for the Science of Human History,
Kahlaische Str. 10,
07745 Jena,
Germany.

email: roberts@shh.mpg.de

KEYWORDS: Anthropocene, *Homo sapiens*, Tropical forests, Archaeology, Late Pleistocene, Holocene

Abstract/first paragraph

Significant human impacts on tropical forests have been considered the preserve of recent societies, linked to large-scale deforestation, extensive and intensive agriculture, resource mining, livestock grazing, and urban settlement. Cumulative archaeological evidence now demonstrates, however, that *Homo sapiens* has actively manipulated tropical forest ecologies for at least 45,000 years. It is clear that these millennia of impacts need to be taken into account when studying and conserving tropical forest ecosystems today. Nevertheless, archaeology has so far provided only limited practical insight into contemporary human-tropical forest interactions. Here, we review significant archaeological evidence for the impacts of past hunter-gatherers, agriculturalists, and urban settlements on global tropical forests. We compare the challenges faced, as well as the solutions adopted, by these groups with those confronting present-day societies, which also rely on tropical forests for a variety of ecosystem services. We emphasise archaeology's importance not only in promoting natural and cultural heritage in tropical forests, but also in taking an active role to inform modern conservation and policy-making.

Introduction

By 2050, it is estimated that over half of the world's population will live in the tropics, with many people relying on tropical forests as a source of freshwater, agricultural land, and urban land, as well as timber, medicine, and food¹. The expansion of human populations into tropical forest environments has seen the latter become some of the most threatened ecosystems in the world^{2,3}: every day *c.* 320 km² of tropical rainforest is destroyed, significantly impacting human populations along with 135 plant, animal, and insect species⁴. The ongoing viability of dry tropical forests is also under serious threat⁵. These alterations affect ecosystems that are central to the stability of

Earth's atmosphere and climate⁶, as well as key providers of economic goods and ecosystem services².

Focus on recent impacts to tropical forests has tended to promote these ecosystems as pristine and relatively untouched until recent centuries or even decades. Nevertheless, cumulative archaeological interest, spurred on by the application of novel methods of site discovery⁷, archaeological science research (e.g.⁸⁻¹¹), and palaeoenvironmental reconstruction (e.g.¹²⁻¹³), have increasingly demonstrated tropical forests to be dynamic 'artefacts' of millennia of human-forest interaction¹⁴⁻¹⁵. Attempts to investigate the relationship between, on the one hand, prehistoric fire regime alteration, cultivation¹⁶, extensive sedentary settlement, and enduring landscape modification¹⁷⁻¹⁸, and, on the other, sustainable past subsistence, water-use, and intensive human occupation, have so far been limited. This is so despite recent calls from UNESCO¹⁹, and a broad range of researchers²⁰⁻²¹ to actively involve archaeologists in conservation and policy-making in tropical forests.

Awareness of long-term anthropogenic impacts to tropical forests has only gradually emerged. As recently as the 1980s and 1990s, anthropologists argued that tropical forests were unattractive environments for human occupation (e.g.²²). This view was further promoted by archaeologists, who, for example, saw tropical forests as barriers to the expansion of Late Pleistocene *Homo sapiens* foragers²³, and also deemed them incapable of supporting agricultural populations²⁴. This bias has been exacerbated by the generally-poor preservation of organic archaeological remains in tropical forest environments (e.g.²⁵). Accordingly, scholarly assumptions about the timing of significant anthropogenic impacts on tropical forests generally point to the post-industrial era or, at the earliest, the colonial era of European 'discovery'²⁶⁻²⁷. Clearly, the accumulating database of archaeological and palaeoecological evidence for pre-industrial and pre-colonial tropical forest occupation and transformation has not been effectively communicated beyond a restricted set of sub-disciplines (though see²⁸⁻³¹). As a consequence, this evidence has only played a small role in discussions about the start date or characteristics of the Anthropocene (e.g.³² but see³³).

Here, we review evidence that has accumulated, primarily in recent decades, for the long-term human transformation of tropical forest ecosystems. Our review is not exhaustive, but rather seeks to highlight how recent studies, drawing on a suite of new archaeological science and palaeoecological methods, have dramatically altered understanding of tropical forest long-term histories globally. We focus on three modes of human impact that, over the long-term, stack up as broad but non-synchronous phases: a phase marked by deliberate forest burning, species translocation, and management of forest biota; a phase of agricultural cultivation and enduring landscape modification; and a phase of urban occupation and transformation of tropical forests. As will be seen, these modes are not mutually exclusive. We conclude by examining the implications of new archaeological and palaeoecological perspectives on the long-term prehistory of tropical forests for contemporary agendas of conservation, management, and resilience-building.

Early impacts

In the last ten years, the archaeologically-acknowledged start date of human inhabitation of tropical forests has quadrupled in age. There is now clear evidence for the use of tropical forests by our species in Borneo^{12-13,34} and Melanesia³⁵ by *c.* 45 ka; in South Asia by *c.* 36 ka³⁶; and in South America by *c.* 13 ka³⁷. There are suggestions of earlier rainforest occupation *c.* 125 ka in Java³⁸⁻³⁹, *c.* 60 ka in the Philippines⁴⁰, *c.* 100 ka in China⁴¹, and in Africa perhaps from the first appearance of *Homo sapiens* *c.* 200 ka⁴², though further research is required to verify these cases⁴³. Early modern humans adapted to diverse tropical forest formations, ranging from the sub-zero temperatures of montane forests to dense, humid, evergreen rainforests, undertaking sophisticated forest mammal hunting and plant processing (e.g.⁴⁴). Moreover, people did not just adapt passively to these

environments, but from the onset modified them in fundamental ways^{10,45}, with outcomes that have affected the natural histories of these forests to the present day.

In Southeast Asia, mounting evidence points to deliberate anthropogenic biomass burning in order to create forest-edge habitats from first human arrival *c.* 45 ka^{13,35} (Figure 1). This may reflect reliance on starchy forest edge plants and bearded pig attracted to canopy openings¹². In tropical Australia, the decline of *Araucaria* and rise of Eucalypts and *Casuarina* has been correlated with the advent of anthropogenic biomass burning after 40 ka⁴⁶⁻⁴⁸. Human landscape impacts have also been documented in the montane tropical forests of Highland New Guinea from 45-35 ka, even retarding vegetation re-colonization in the region following the Last Glacial Maximum⁴⁹. That early foragers could have played a significant role in reshaping newly colonized landscapes is also supported by evidence that later foragers did. For example, the first colonists of the eastern Caribbean in the mid-Holocene brought their foraging, collecting and hunting lifestyles with them, and engaged in modification and management of tropical ecosystems that is reflected in significant shifts in pollen and phytolith datasets⁵⁰.

Still debated, but potentially even more significant in terms of long-term impact, is human involvement in Late Pleistocene tropical forest megafaunal extinctions, which are argued to have had anthropogenic, climatic or multivariate causes, and to have resulted in major changes to ecosystem structure⁴⁷. While discussions of megafaunal extinctions in tropical forests have been relatively limited, these environments possessed diverse megafauna, which persist in parts of Africa and Asia⁵¹. In the New Guinea Highlands there is evidence for megafauna, including extinct marsupials (such as *Maokopia ronaldii* and *Thylogale hopeii*), at West Balim River *c.* 30 ka and at Nombe *c.* 25 ka, with their gradual demise following human arrival and subsequent biomass burning^{49,52}. In the Amazon basin, megafaunal extinctions, such as those of large mastodons (*Haplomastodon waringi*) and ground sloths (*Eremotherium laurillardii*), significantly altered biodiversity, vegetation distributions, nutrient cycling and carbon storage in the region, with effects persisting to the present day⁵³, though the role of humans in this process has yet to be fully-explored (e.g.⁵⁴).

Tropical forest foragers also reshaped landscapes through the active long-distance translocation of species. In Melanesia, people translocated small mammals for reliable protein from 20 ka⁵⁵. The result is that species like bandicoot (*Perameles* sp.) and cuscus (*Phalanger* sp.) are now widely distributed across Melanesian islands, including the Bismarck Archipelago, where they are not endemic. Yams (*Discorea alata*) are present on both sides of the Wallace Line by 45 ka^{34,56}. By the Terminal Pleistocene or Early Holocene, a web of translocations seems to have carried economically-important plants, including the sago palm (*Metroxylon sagu*), yams (*Discorea alata*) and *D. hispida*, taro (*Colocasia esculenta*) and swamp taro (*Alocasia longiloba*), to the coastlands and islands of Southeast Asia, the Philippines, and Wallacea, and possibly also into North Australia⁵⁷⁻⁵⁹ (Figure 1). Modification of the distribution and density of edible and economic tree species has also been observed among Amazonian hunter-gatherers⁶⁰.

Farming in the forest

The montane rainforests of New Guinea provide some of the earliest evidence for agricultural experimentation anywhere in the world^{8,58}. At Kuk Swamp, Terminal Pleistocene human foragers moved and tended tropical plants like yam (*Dioscorea* sp.), banana (*Musa* spp.), and taro (*Colocasia* sp.) until these species were fully ‘domesticated’ by the Early-Mid Holocene^{8,61}. Both recent and ancient agricultural practices in this and other tropical forest regions were, however, combined with hunting/fishing and gathering. For example, while there was large-scale land management at Kuk Swamp, other surrounding sites demonstrate continued evidence for small mammal hunting⁶²⁻⁶³. Studies of early human activities in rainforest environments have helped to

blur the boundaries between tropical forest hunter-gatherers and farmers, revealing sophisticated subsistence practices, such as transplantation and cultivation extending back to at least the early Holocene. Such studies highlight how even these small populations may have altered tropical forest environments (Figure 2).

The eventual domestication of tropical forest plants and animals, together with the incorporation of plants and animals domesticated outside of tropical forest environments, and the emergence of agricultural systems, reflect new thresholds in the intensifying relationship between humans and tropical forest environments. The scale of human selection on tropical forest species can be seen in the number of them that are central to global cuisine today, including sweet potato, manioc, chilli, black pepper, mango, yams, pineapple and banana⁶⁴(Figure 3). While domesticated tropical forest fauna are fewer in number, the now globally-distributed domestic chicken also most likely had a tropical forest origin in the form of the jungle fowl⁶⁵. Despite new crops, however, increasingly settled tropical forest communities also continued to practice the same agro-forestry systems developed by their forebearers, focused on the management of various tree species. For example, the first Polynesian occupants of the Chatham Islands brought with them translocated tree crops, important to arboriculture and agroforestry strategies (with lasting impacts on conservation efforts in these islands)⁶⁶. Likewise stands of Brazil nut (*Bertholletia excelsa*) in the Amazon closely map onto ancient human settlements⁶⁷, reflecting long-term human interaction with and management of this species.

In addition to species domestication, translocation and clustering, the development of indigenous tropical forest agricultures during the Holocene also led to the intensive manipulation of drainage and the modification of soils. We have already mentioned the distinctive aspects of Early Holocene indigenous agriculture in Melanesia, which involved the formation of drainage ditches in order to prevent waterlogging of soils in planting areas⁶¹. In Amazonia, evidence from the Llanos de Mojos⁶⁸ and Guyanas⁶⁹ highlights how populations adapted to flooding conditions in order to intensify agricultural production. In areas now dominated by tropical rainforest, pre-Columbian settlement and fire-intensive land use practices resulted in the formation of expanses of fertile anthropic soils (Figure 2) known as *terras pretas* and *terras mulatas*^{10,17}. These may have been re-utilized as fertile soilscape legacies by populations in the past, just as they are employed in the present.

Over their human history, tropical forests have also been influenced by expansions of neighbouring farming groups and crops. In Amazonia, the adoption of Mesoamerican maize (*Zea mays*) dates back to at least 6,000 BP⁷⁰ and the plant was an important part of regional diets by the late Holocene⁷¹. In Africa, Bantu agriculturalists farming pearl millet and cattle appear to have expanded into the tropical rainforests of western and central Africa, c. 2.5 ka, when their extent was greatly contracted²⁴. This expansion is suggested to have resulted in severe erosion and forest fragmentation in eastern and central Africa⁷². Similarly, the arrival of rice and millet agriculture in the tropical forests of Southeast Asia is associated with large-scale forest clearance, particularly within the more deciduous forests to the north of the equatorial belt in mainland Southeast Asia, which would have been easier to burn⁷³⁻⁷⁴.

In the Caribbean Archaic and Ceramic periods, meanwhile, communities brought a variety of exogenous domesticates, including wild avocado (*Persea americana*), manioc (*Manihot esculenta*), dog (*Canis lupus familiaris*) and guinea pig (*Cavia porcellus*), into island tropical forests⁷⁵. Early Polynesians similarly carried a range of domesticated crops, animals and commensals that have contributed to the alteration of tropical forests across the region⁷⁶⁻⁷⁷. On Tonga, for example, tropical forest tree species declined in abundance following Polynesian colonisation⁷⁸. Extinctions also ensued. Estimates suggest that avian extinctions from the tropical Pacific after Polynesian colonisation and prior to European arrival numbered in the hundreds if not thousands⁷⁹.

Nevertheless, outside of more vulnerable island contexts, the adaptation of non-endemic domesticates to tropical forest environments did not generally result in significant or lasting environmental degradation in pre-industrial times. Indeed, most communities entering these habitats were initially at low population densities and appear to have developed subsistence systems that were tuned to their particular environments. This stands in stark contrast to the more recent effects of industrial monoculture and extensive cattle ranching in tropical forest settings. These practices, which induce rampant clearance, reduce biodiversity, provoke soil erosion, and render landscapes more susceptible to the outbreak of wild fires (e.g.⁸⁰⁻⁸¹), represent some of the greatest dangers facing tropical forests. Pre-industrial farming in tropical forests, which often employed fire in controlled fashion (e.g.^{17,82}), by contrast, relied on an intimate knowledge of forest dynamics and successful integration within the whole ecological system, and largely appears to have encouraged more flexible and resilient farming systems based around polyculture.

Forests of ruins or sustainable urbanism?

Public perceptions of archaeology in tropical forests often revolve around ‘lost’ temples that are only now being ‘discovered’, with romantic visions of vanished cities abandoned to the jungle⁸³. In places like Cambodia, however, these perceptions are deeply political and firmly grounded in colonialism⁸⁴. Evocative images of the rise, fall and sudden ‘collapse’ of societies in these environments also owe much to 20th century archaeological suggestions that large, permanent settlements could not be maintained due to the low fertility of tropical soils⁸⁵. Nevertheless, over the last two decades, archaeological data, including canopy-penetrating LiDAR mapping, have revealed previously unimagined scales of human settlement in the Americas and Southeast Asia^{7,86}. Indeed, extensive settlement networks in the tropical forests of Amazonia, Southeast Asia, and Mesoamerica clearly persisted many times longer than more recent industrial and urban settlements of the modern world have been present in these environments^{18,87}.

Several challenges face urban populations in tropical forest environments today. For instance, floods and mudslides pose one of the greatest threats to modern urban settlements in tropical settings⁸⁸. In 1999, a high-magnitude storm in the Vargas region of northern Venezuela triggered flash floods and mudslides that killed between 10,000 and 15,000 people and destroyed c. 40,000 homes in one of the worst natural disasters in the recorded history of the Americas⁸⁸. Past urban populations clearly acknowledged such challenges and worked to mitigate them. For example, communities in and around the great temple-cities of the Angkor period in Cambodia developed large-scale hydrological infrastructure to both ensure access to water and divert excess flow away from settlements⁷ (Figure 4). Similarly, archaeological evidence from c. 1.3 ka in Mesoamerica and Southeast Asia suggests both wetland modification and raised fields were deployed to minimize the impact of flooding on settlements⁸⁹⁻⁹⁰. Nevertheless, in some cases the ongoing danger of this high water-flow system could not be contained, with disastrous consequences. Such impacts have been observed, for example, in the remains of the settlements of the Khmer Empire, where hydraulic systems ultimately failed⁷. The archaeological record offers both mitigation strategies and cautionary tales.

Another major challenge to sustaining large populations in tropical forest habitats is the soil erosion that results from forest clearance and large-scale agricultural systems⁹¹⁻⁹². In Mesoamerica, certain Mayan communities appear to have ‘gardened’ the local forest for their resources rather than practicing forest clearance and monoculture farming⁹³. This facilitated the long-term sustainable support of large populations. Southern Mayan cities, or at least their ruling elites, perhaps did overstretch under duress from climate change but an overall decrease in population, with perhaps significant effects on the erosive potential of the landscape⁹¹, occurred alongside increased resilience and population growth in the northern Maya region^{90,94}. In Amazonia, dense pre-colonial populations relied on various combinations of fire-intensive cultivation practices, raised agricultural

fields, capture and management of aquatic riverine resources, and foraging for wild fauna and plants^{17,68,95}. This agroforestry system helped produce fertile soils and enhanced long-term forest biodiversity. Deforestation appears to have been sufficiently limited that evidence of significant human-induced erosion in Amazonia is so far scant.

Many other archaeological and palaeoecological intersections demonstrate the fine balance between large human populations and their tropical forest environments. For instance, current evidence would suggest that a tendency towards sprawling was already present in early tropical urbanism⁹⁶. This is mirrored to a significant degree in the modern world and is reflected in concerns about the sustainability of sprawling megacities resulting in continual degradation of environments at the ever-expanding urban fringe⁹⁷. The decline of early, low-density megacities with dense urban cores and massive state-sponsored hydraulic infrastructure appears often to have been strongly correlated with climate change⁹⁸⁻⁹⁹. On the other hand, diversification, decentralization and ‘agrarian urbanism’ appear to have contributed to overall resilience¹⁰⁰⁻¹⁰¹.

The deep history of global tropical forests: implications for the 21st century

Although tropical forests were once seen as pristine, they are increasingly recognized as an outcome of long-standing human modification, management, and transformation. New methods and emerging datasets are demonstrating unequivocally that their enduring transformation by past human populations has much greater antiquity than previously thought. Yet despite the contemporary threat to tropical forests, and the need for concerted cross-disciplinary efforts to address the challenges they face, growing archaeological datasets have to date played only a relatively minor role in shaping contemporary discussions, debate, and policy making. This is in part a result of limited archaeological survey and exploration of tropical forests relative to other environments. It is also due to the fact that few ecologists and conservationists have engaged with mounting evidence for the long-term human impact of tropical forest environments (however, see ^{15,31,102}).

Some important strides have nonetheless been made. Increasing numbers of world heritage sites are now being accepted from tropical forest habitats, ranging from early *Homo sapiens* cave sites in Sri Lanka¹⁰³ to large-scale field systems in Bolivia¹⁰⁴. UNESCO¹⁹ is now actively seeking to create joint world heritage sites of natural and cultural importance in tropical forest regions so that archaeological sites and their forest contexts are mutually protected within the framework of the UN 2030 Sustainable Development Programme¹⁰⁵. Ecological restoration projects are also drawing on archaeological data. In the tropical forests of Hawaii, for example, wild flowering plants identified in archaeobotanical assemblages have been successfully reintroduced into regions from which they had been extirpated by the 21st century¹⁰⁶.

Ancient tropical forest urban centres are also attracting broader attention in terms of their potential to shed light on contemporary challenges. For example, the extensive urban fringes around many ancient tropical forest urban centres are drawing interest within present day urban planning research (e.g.⁹⁷). The role of such peri-urban interfaces in local resilience, in addressing vulnerability of urban centres to climate change, and in supporting current livelihoods and food security are of increasing interest, with archaeological data from tropical regions providing useful case studies of long-term dynamics⁹⁷. Also of interest have been tropical rainforest anthrosols such as the fertile *terra preta* soils of the pre-Columbian Amazon. Research into these pre-Columbian soilscape legacies has both encouraged the search for pantropical analogues¹⁰⁷⁻¹⁰⁸ and inspired attempts to recreate similarly fertile soils¹⁰⁹.

Tropical forest archaeology is now past its pioneering stage. Although its development over the past decades has been enabled by new methods within and beyond the discipline of archaeology, the role

of deforestation in revealing previously hidden ancient structures underlines the urgency of drawing on the past to inform present-day policy and planning. This urgency is fully felt by indigenous and traditional populations in tropical regions, many of whose livelihoods and cultural existence is intimately linked to tropical forest environments. For instance, Mbuti populations in Central Africa have been gradually evicted from the tropical evergreen rainforests of this region over the last decade or so¹¹⁰, sometimes in the name of nature conservation. This has led not only to loss of traditional ecological knowledge but also to pervasive malnutrition and disease among some populations¹¹¹. In the Brazilian Amazon, the impact of expanding infrastructure on populations is severe¹¹² and current debates examine the ethics of contract archaeological work in environmental licensing of large-scale infrastructure projects¹¹³. Threats to indigenous and traditional populations, their livelihoods, and their knowledge systems are global in scope and need to be factored into any attempts to marry archaeological practice and policy relating to tropical forests.

Archaeological and palaeoecological data relating to ancient tropical forest problematizes the notion of any return to pristine conditions. If past human populations have in many cases altered tropical forests in ways that have rendered them more useable for human inhabitation – improving ecosystem services in modern parlance – then perhaps restoration is a problematic goal, at least if such practices are aimed at restoring to some ‘original’ condition. Archaeological research instead promotes recognition and in some cases conservation of ‘novel ecosystems’¹¹⁴⁻¹¹⁵ that have helped to sustain human populations over the long-term. The championing of novel ecosystems, and abandonment of traditional conservation goals are controversial ideas, but clearly amongst a number of key debates that archaeologists might usefully weigh in on as part of wider, *inter-disciplinary* discussions about tropical forests.

In conclusion, we suggest that emerging understanding of the long-term history of tropical forests points to a number of core recommendations. Foremost amongst these is that indigenous and traditional peoples – whose ancestors’ systems of production and knowledge are slowly being decoded by archaeologists – should be seen as part of the solution and not one of the problems of sustainable tropical forest development. Second, there is a need for greater dissemination of the findings of archaeology beyond the discipline in order to enable broader understanding of long-term human alteration of tropical forest regions, and informed consideration of its implications. Third, we should continue to advance along the path of more regular and intensive exchange between archaeologists, ecologists, anthropologists, biologists, and geographers, engaging beyond academia with international bodies such as UNESCO and FAO^{19-21,116-117}. To this end, we advocate holding further regular meetings dedicated to a holistic and pantropical approach to the study of the archaeology of tropical forest biomes, as well as undertaking to achieve broader engagement between archaeologists and stakeholders.

Author contributions: P.R. conceived of the manuscript, wrote the manuscript, and conceived of and produced Figures 2 and 3. C.H. wrote the manuscript and conceived of and produced Figure 1. M.A.K. wrote the manuscript and conceived of and produced Figures 2 and 3. D.E. wrote the manuscript and conceived of and produced Figures 3 and 4. N.B. conceived of the manuscript, wrote the manuscript, and conceived of Figures 2 and 3.

The authors declare **no competing financial interest** or any other **conflict of interest**.

Acknowledgments:

We would like to thank the participants for the Pantropica, 2016 workshop, funded and hosted by the Department of Archaeology at the Max Planck Institute for the Science of Human History, Jena, for taking part in an international meeting devoted to the global archaeology of rainforest environments. We would also like to thank Nuria Sanz, and the UNESCO office in Mexico, for

invitations to tropical forest conservation workshops in Xalapa (2015) and Mexico City (2017). The discussions that took place during these three workshops informed and shaped the early stages of this manuscript. We would also like to extend our thanks to Nina Hofer for her help with Figures 1, 2 and 3. DE's contribution, and Nina Hofer's contribution to the illustrations, was funded by the European Research Council (ERC) under the European Union's Horizon 2020 research and innovation programme (grant agreement No 639828) in partnership with the APSARA National Authority and the Ministry of Culture and Fine Arts, Cambodia. We also thank the Max Planck Institute for the Science of Human History, Jena for the ongoing funding of PR and NB.

N.B. We use "ka" to denote thousands of calibrated/uncalibrated years ago. Where this refers to radiocarbon dates this is equivalent to calibrated years BP.

Figures:

Figure 1. Figure 1. Tropical Australasia showing sites with reasonably certain modern human presence, sites where there is vegetation disturbance by fire atypical of the longer Pleistocene record, or where humans are directly implicated, and locations with evidence for economically useful plants found both sides of the biogeographical discontinuity of the Wallace Line. Top: Late Pleistocene, Bottom: Early Holocene 11,000-5,000 BP. The figure is compiled based on data from Barker *et al.*¹¹⁸, Denham⁵⁸, Hunt *et al.*¹³, Hunt and Premathilake⁵⁹, Hunt and Rabett¹¹⁹, Marwick *et al.*¹²⁰, Mijares *et al.*⁴⁰, Moss and Kershaw⁴⁷, Paz⁵⁶, Kershaw *et al.*¹²¹, van der Kaars *et al.*¹²², Storm *et al.*³⁸, Summerhayes *et al.*³⁵, and Westaway *et al.*³⁹.



Figure 2. A model of anthropic impact on tropical forest environments based on Amazonia. A) Pre-human tropical forest with natural gap dynamics, including megafaunal impacts, B) Nomadic foraging groups utilizing plant (including tree) and animal resources and, where desirable, forming gaps through forest burning, C) Initial sedentism with house gardens and slight soil modification, D) Increased sedentism and population growth with corresponding soil modification, swidden plots, slash and burn impacts, the small re-growth of trees on old plots. E) Abandonment leading to forest re-growth and the legacy of anthropic soils. Note the central role played by aquatic resources and alluvial environments for the selection of appropriate environments for human inhabitation.

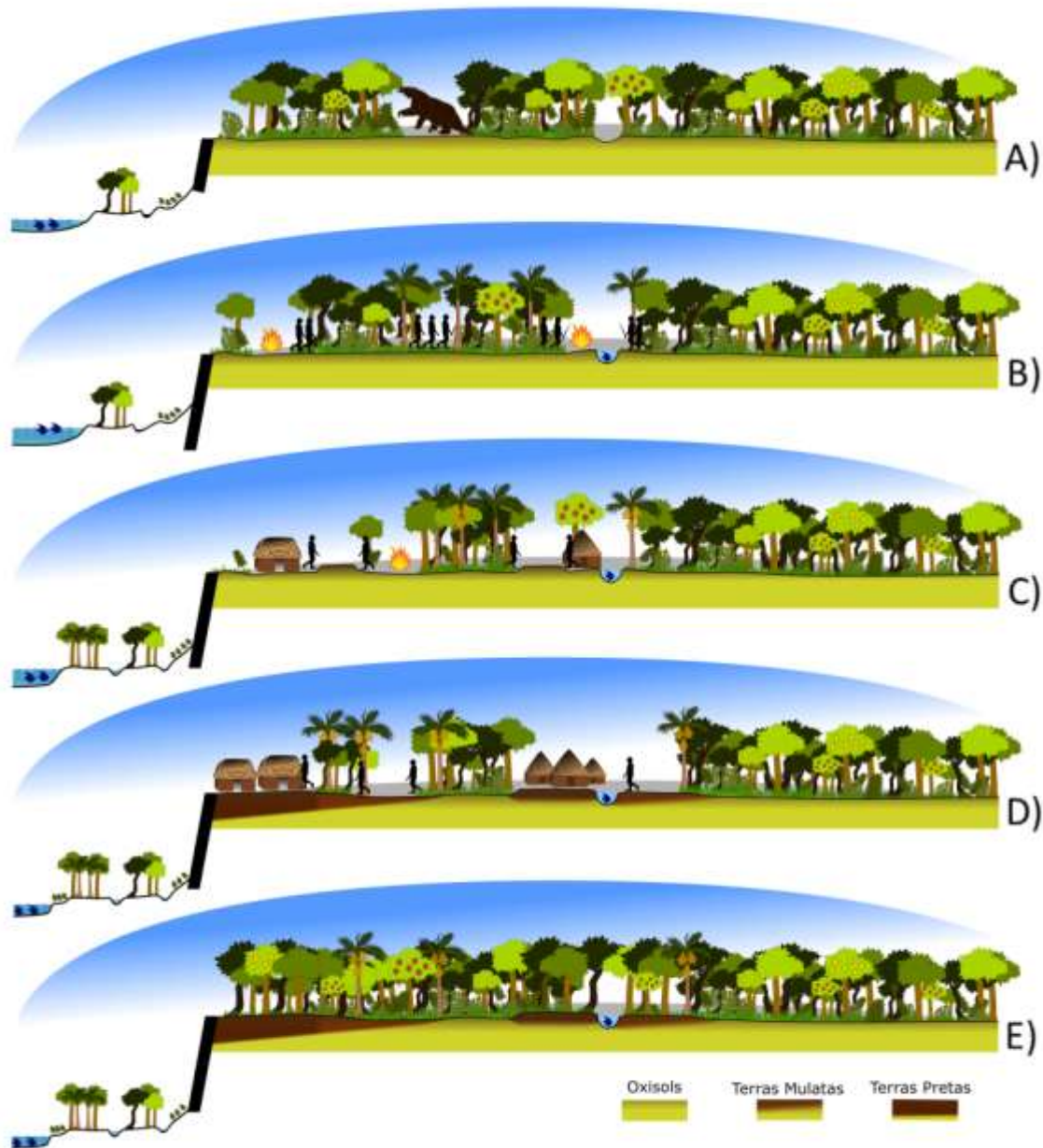


Figure 3. Map of the temporal and geographical origins of selected domesticated plant and animal resources coming from tropical forest regions during the Early (11,000-8,200 ka), Middle (8,200-4,200 ka) and Late Holocene (4,200 ka onwards). Temporal periods have been defined on the basis of Walker *et al.*¹²³ Temporal and geographical information comes from Pearsall¹²⁴, Clement *et al.*¹²⁵, Piperno¹²⁶, Denham⁵⁸, Kingwell-Banham and Fuller¹²⁷, Storey *et al.*¹²⁸, Fuller and Hildebrand¹²⁹, Hunt and Rabett¹¹⁹, and Nagarajan *et al.*¹³⁰.

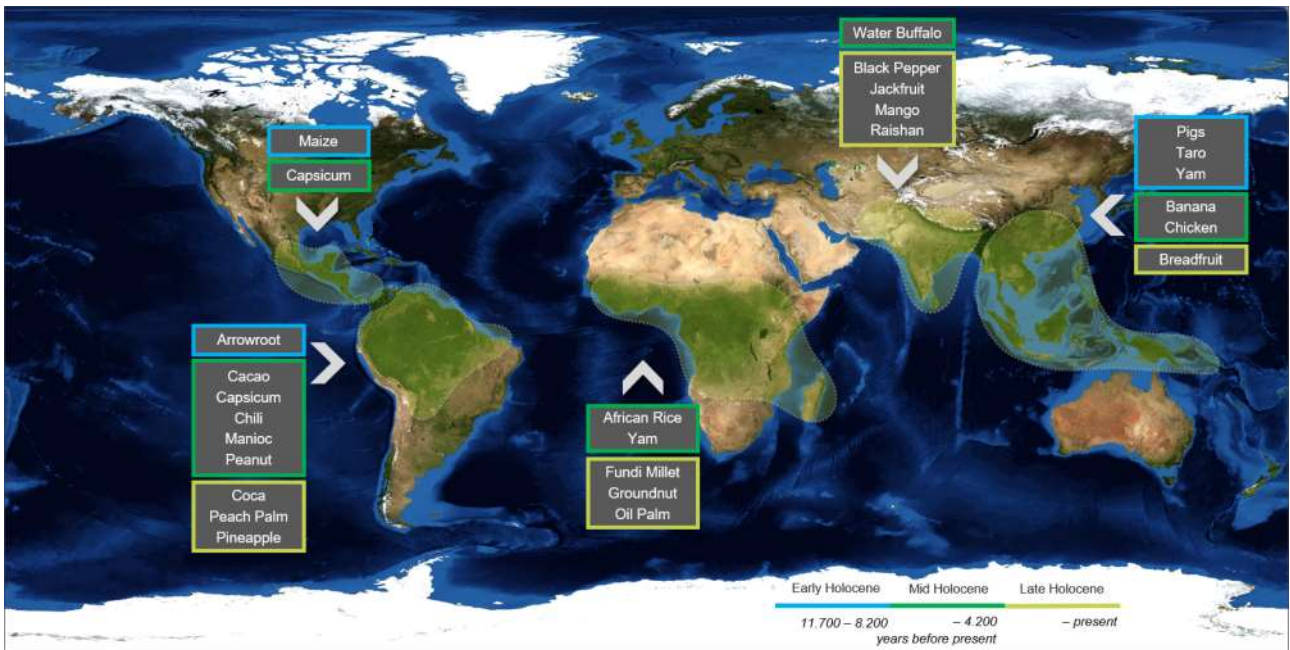
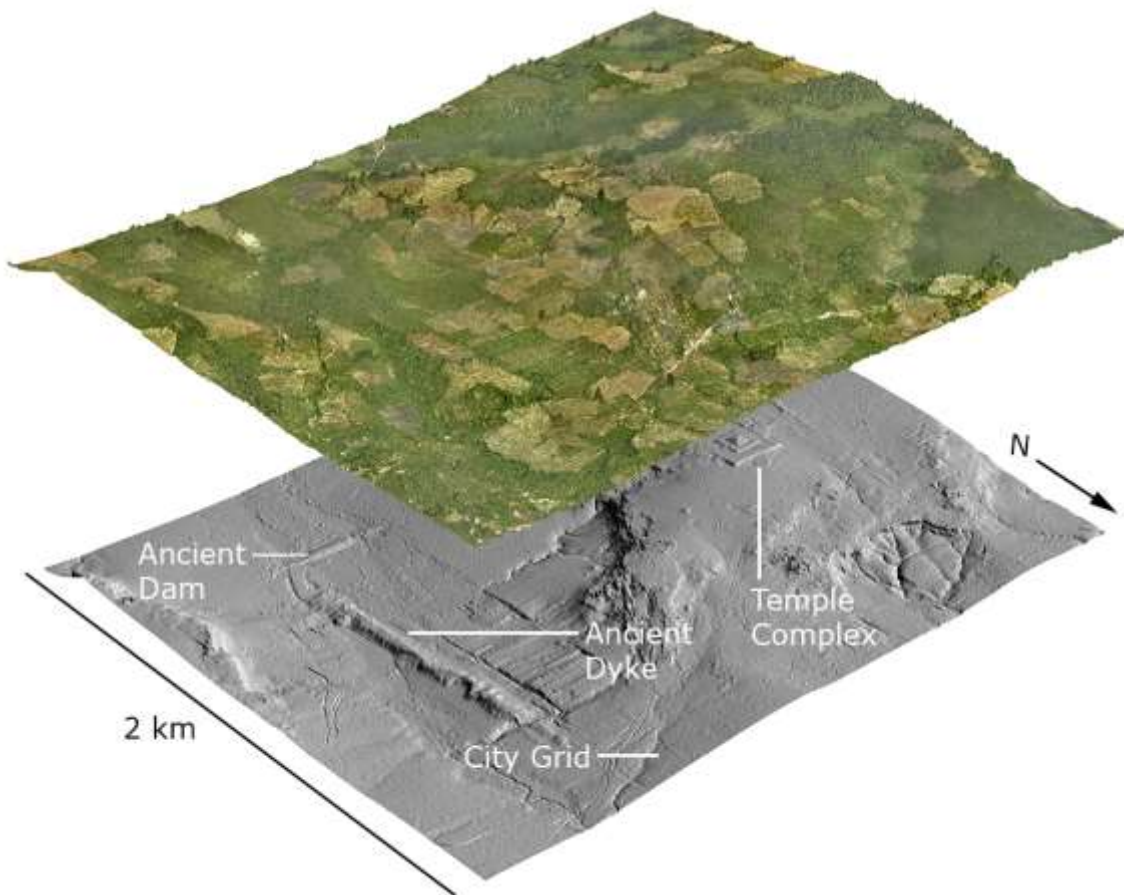


Figure 4. Lidar-derived bare earth model of urban and hydraulic infrastructure at a city on Phnom Kulen, ~35 km north of Angkor Wat. Penny *et al.*¹³¹ have shown that the area that our figure shows was subject to intensive land use for several centuries between the 8th and 12th centuries CE, punctuated by episodes of severe erosion.



References

1. State of the Tropics. *State of the Tropics 2016 report*. James Cook University, Cairns, Australia (2016).

2. Gardner, T.A. *et al.* Prospects for tropical forest biodiversity in a human-modified world. *Ecology letters* **12**, 561-582 (2009).
3. Ghazoul, J. & Shiel, D. *Tropical rain forest ecology, diversity, and conservation*. New York: Oxford University Press (2010).
4. Scientific American. Measuring the daily destruction of the world's rainforests. *Scientific American*. <http://www.scientificamerican.com/article/earth-talks-daily-destruction/> (2009).
5. DRYFLOR *et al.* Plant diversity patterns in neotropical dry forests and their conservation implications. *Science* **353**, 1383-1387 (2016).
6. Martin, C. *On the edge: the state and fate of the world's tropical rainforests*. Report to the club of Rome: Greystone Books (2015).
7. Evans D. Airborne laser scanning as a method for exploring long-term socio-ecological dynamics in Cambodia. *Journal of Archaeological Science*: doi:10.1016/j.jas.2016.05.009 (2016).
8. Denham, T.P. *et al.* Origins of agriculture at Kuk Swamp in the Highlands of New Guinea. *Science* **301**, 189-193 (2003).
9. Barton, H. The case for rainforest foragers: The starch record at Niah Cave, Sarawak. *Asian Perspectives* **44**, 56-72 (2005).
10. Arroyo-Kalin, M. The Amazonian Formative: crop domestication and anthropogenic soils. *Diversity* **2**, 473-504 (2010).
11. Roberts, P. *et al.* Direct evidence for human reliance on rainforest resources in late Pleistocene Sri Lanka. *Science* **347**, 1246-1249 (2015).
12. Barker, G. *et al.* The 'human revolution' in lowland tropical Southeast Asia: the antiquity and behaviour of anatomically modern humans at Niah Cave (Sarawak, Borneo). *Journal of Human Evolution* **52**, 243-261 (2007).
13. Hunt, C.O., Gilbertson, D.D. & Rushworth, G. A 50,000-year record of late Pleistocene tropical vegetation and human impact in lowland Borneo. *Quaternary Science Reviews* **37**: 61-80 (2012).
14. Barton, H., Denham, T., Neumann, K. & Arroyo-Kalin, M. Long-term perspectives on human occupation of tropical rainforests: An introductory overview. Guest editorial. *Quaternary International* **249**, 1-3 (2012).
15. McMichael, C.N.H., Matthews-Bird, F., Farfan-Rios, W. & Feeley, K.J. Ancient human disturbances may be skewing our understanding of Amazonian forests. *Proceedings of the National Academy of Sciences, USA* **114**, 522-527 (2017).
16. Piperno, D.R. & Pearsall, D.M. *The Origins of Agriculture in the Lowland Neotropics*. New York: Smithsonian Academic Press (1998).
17. Arroyo-Kalin, M. Slash-burn-and-churn: Landscape history and crop cultivation in pre-Columbian Amazonia. *Quaternary International* **249** 4-18. doi:10.1016/j.quaint.2011.08.004 (2012).
18. Heckenberger, M.J. *et al.* Pre-Columbian urbanism, anthropogenic landscapes and the future of the Amazon. *Science* **321**, 1214-1217 (2008).
19. Sanz, N (ed.). *Exploring Frameworks for Tropical Forest Conservation: managing production and consumption for sustainability*. Mexico City: UNESCO (2017).
20. Babin, D. (ed.). *Beyond Tropical deforestation: From tropical deforestation to forest cover dynamics and forest development*. Montpellier: CIRAD/UNESCO (2004).
21. De Dapper, M. *Tropical forests in a changing global context*. Bruxelles: Académie royale des sciences d'outre-mer (2005).

22. Bailey, R.C. et al. Hunting and gathering in tropical rain forest; Is it possible? *American Anthropologist* **91**, 59-82 (1989).
23. Gamble, C. *Timewalkers: The prehistory of global colonization*. Stroud: Alan Sutton (1993).
24. Grollemund, R et al. Bantu expansion shows that habitat alters the route and pace of human dispersals. *Proceedings of the National Academy of Sciences of the United States of America* **112**, 13296–13301 (2015).
25. Stahl, P.W. *Archaeology in the lowland American tropics: current analytical methods and recent applications*. Cambridge: Cambridge University Press (1995).
26. Hemming, J. *Tree of Rivers: The Story of the Amazon*. London: Thames and Hudson (2009).
27. Lewis, S.L. & Maslin, M.A. Defining the Anthropocene. *Nature* **519**, 171-180 (2015).
28. Steege, H. t. et al. Hyperdominance in the Amazonian Tree Flora. *Science* **342**, 325 (2013).
29. McMichael, C. et al. Predicting pre-Columbian anthropogenic soils in Amazonia. *Proceedings of the Royal Society B. Biological sciences* **281**, 20132475 (2014).
30. Bush, M.B. et al. Human disturbance amplifies Amazonian El Nino Southern Oscillation signal. *Global Change Biology* DOI: 10.1111/gcb.13608 (2017).
31. Levis, C. et al. Persistent effects of pre-Columbian plant domestication on Amazonian forest composition. *Science* **355**, 925-931 (2017).
32. Smith, B.D. & Zeder, M.A. The onset of the Anthropocene. *Anthropocene* **4**, 8-13 (2013).
33. Roosevelt, A.C. The Amazon and the Anthropocene: 13,000 years of human influence in a tropical rainforest. *Anthropocene* **4**, 69-87 (2013).
34. Barker, G. (ed.). *Rainforest foraging and Farming in Island Southeast Asia, Vol. 1: The archaeology of the Niah Caves, Sarawak*. (McDonald Institute Monographs.) Cambridge: McDonald Institute for Archaeological Research (2013).
35. Summerhayes, G.R. et al. Human adaptation and plant use in Highland New Guinea 49,000 to 44,000 years ago. *Science* **330**, 78-81 (2010).
36. Perera, N. et al. People of the ancient rainforest: Late Pleistocene foragers at the Batadombalena rockshelter, Sri Lanka. *Journal of Human Evolution* **61**, 254-269 (2011).
37. Roosevelt, A.C., Douglas, J. & Brown, L. In *The First Americans: The Pleistocene Colonization of the New World* (ed Jablonski, N.G.) 159-223 (Memoir No. 27. California Academy of Sciences, San Francisco, 2002).
38. Storm, P. et al. Late Pleistocene Homo sapiens in a tropical rainforest fauna in East Java. *Journal of Human Evolution* **49**, 536-545 (2005).
39. Westaway, K.E. et al. Age and biostratigraphic significance of the Punung rainforest fauna, East Java, Indonesia, and implications for Pongo and Homo. *Journal of Human Evolution* **53**, 709-717 (2007).
40. Mijares, A.S.B. et al. New evidence for a 67,000-year-old human presence at Callao Cave, Luzon, Philippines. *Journal of Human Evolution* **59**, 123-132 (2010).
41. Liu, W. et al. The earliest unequivocally modern humans in southern China. *Nature* **526**, 696-700 (2015).
42. Mercader, J. Forest people: The role of African rainforests in human evolution and dispersal. *Evolutionary Anthropology* **11**, 117-124 (2002).
43. Roberts, P., Boivin, N., Lee-Thorp, J., Petraglia, M. & Stock, J. Tropical forests and the genus

- Homo. *Evolutionary Anthropology* **25**, 306-317 (2016).
44. Barker G., Farr, L. *Archaeological Investigations in the Niah Caves, Sarawak Volume 2*. Cambridge: The McDonald Institute, Cambridge, (2016).
45. Gnecco, C. Against ecological reductionism: Late Pleistocene hunter-gatherers in the tropical forests of northern South America. *Quaternary International* **109-110**, 13-21 (2003).
46. Kershaw, A.P., Bretherton, S.C. & van der Kaars, S. A complete pollen record of the last 230 ka from Lynch's Crater, north-eastern Australia. *Palaeogeography, Palaeoclimatology, Palaeoecology* **251**, 23-45 (2007).
47. Moss, P.T. & Kershaw, A.P. A late Quaternary marine palynological record (oxygen isotope stages 1 to 7) for the humid tropics of northeastern Australia based on ODP site 820. *Palaeogeography, Palaeoclimatology, Palaeoecology* **251**, 4-22 (2007).
48. Bird, M.I. *et al.* Humans, megafauna and environmental change in tropical Australia. *Journal of Quaternary Science* **20**, 493-452 (2013).
49. Fairbairn, A.S., Hope, G.S. & Summerhayes, G.R. Pleistocene occupation of New Guinea's highland and subalpine environments. *World Archaeology* **38**, 371-386 (2006).
50. Siegel, P.E. *et al.* Paleoenvironmental evidence for first human colonization of the eastern Caribbean. *Quaternary Science Reviews* **129**, 275-295 (2015).
51. Malhi, Y., Gardner, T.A., Goldsmith, G.R., Silman, M.R. & Zelazowski, P. Tropical forests in the Anthropocene. *Annual Review of Environment and Resources* **39**, 125-159 (2014).
52. Hope, G. S., Flannery, T. F. & Boardi, N. A preliminary report of changing Quaternary mammal faunas in subalpine New Guinea. *Quaternary Research* **40**, 117-26 (1993).
53. Doughty, C.E. *et al.* Megafauna extinction, tree species range reduction, and carbon storage in Amazonian forests. *Ecography* **39**, 194-203 (2016).
54. Rossetti, D.de F., de Toledo, P.M., Moraes-Santos, H.M. & de Araújo Santos Jr, A.E. Reconstructing habitats in central Amazonia using megafauna, sedimentology, radiocarbon, and isotope analyses. *Quaternary Research* **61**, 289-300 (2004).
55. Gosden, C. & Robertson, N. In *Report of the Lapita Homeland Project* (eds. Allen, J., Gosden, C.) 20-91 (Occasional Papers in Prehistory 20, Department of Prehistory, Research School of Pacific Studies, Australian National University, 1991).
56. Paz, V.J. Rock shelters, caves, and archaeobotany in island Southeast Asia. *Asian Perspectives* **44**, 107-118 (2005).
57. Denham, T.P., Donohue, M. & Booth, S. Revisiting an old hypothesis: horticultural experimental in northern Australia. *Antiquity* **83**, 634-648 (2009).
58. Denham, T.P. Early agriculture and plant domestication in New Guinea and Island Southeast Asia. *Current Anthropology* **52**, S379-S395 (2011).
59. Hunt, C.O., Premathilake, R. Early Holocene vegetation, human activity and climate from Loagan Bunut, Sarawak, Malaysian Borneo. *Quaternary International* **249**, 105-119 (2012).
60. Balée, W. *Footprints of the forest: Ka'apar ethnobotany - the historical ecology of plant utilization by an Amazonian people*. New York: Columbia University Press (1994).
61. Golson, J. in *Foraging and Farming: The Evolution of Plant Exploitation* (eds Harris, D.R. & Hillman, G.C.) 109-136 (London: Unwin Hyman, 1989).
- 62 Gaffney, D., Ford, A. & Summerhayes, G.R. Crossing the Pleistocene-Holocene transition in the New Guinea Highlands: Evidence from the lithic assemblage of Kiowa rockshelter. *Journal of Anthropological Archaeology* **39**, 223-246 (2015).

63. Roberts, P., Gaffney, D., Lee-Thorp, J. & Summerhayes, G. Persistent tropical foraging in the highlands of terminal Pleistocene/Holocene New Guinea. *Nature Ecology and Evolution* **1**, 0044 (2017).
64. Iriarte, J., Denham, T. & Vrydaghs, L (eds). *Rethinking Agriculture: Archaeological and Ethnoarchaeological Perspectives*. Walnut, California: Left Coast Press (2007).
65. Eriksson, J *et al.* Identification of the yellow skin gene reveals a hybrid origin of the domestic chicken. *PLOS Genetics* <http://dx.doi.org/10.1371/journal.pgen.1000010> (2008).
66. Maxwell, J. J., Howarth, J.D., Vandergoes, M.J., Jacobsen, G. E. & Barber, I.G. The timing and importance of arboriculture and agroforestry in a temperate East Polynesia Society, the Moriori, Rekohu (Chatham Island). *Quaternary Science Reviews* **149**, 306-325 (2016).
67. Shepard, G. H. & Ramirez, H. “Made in Brazil”: Human Dispersal of the Brazil Nut (*Bertholletia excelsa*, Lecythidaceae) in Ancient Amazonia. *Economic Botany* **65**, 44-65 (2011).
68. Lombardo, U. & Prümers, H. Pre-Columbian occupation patterns in the eastern plains of the Llanos de Moxos, Bolivian Amazonia. *Journal of Archaeological Science* **37**, 18750-1885 (2010).
69. Rostain, S. *Islands in the rainforest: landscape management in pre-Columbian Amazonia*. Walnut Creek: Left Coast Press (2013).
70. Bush, M.B., Piperno, D.R. & Colinvaux, P.A. A 6,000 year history of Amazonian maize cultivation. *Nature* **340**, 303-305 (1989).
71. Hermenegildo, T, O'Connell, T.C., Guapindaia, V.L.C., Neves, E.G. New evidence for subsistence strategies of late pre-colonial societies of the mouth of the Amazon based on carbon and nitrogen isotopic data. *Quaternary International*. DOI : 10.1016/j.quaint.2017.03.003 (2017)
72. Bayon, G., Dennielou, B., Etoubleau, J., Ponzevera, E. & Toucanne, S. Intensifying weathering and land use in Iron Age Central Africa. *Science* **335**, 1219-1222 (2012).
73. Bellwood, P. Cultural and biological differentiation in Peninsular Malaysia: the last 10,000 years. *Asian Perspectives* **32**, 37-60 (1993).
74. Krigbaum, J. Neolithic subsistence patterns in northern Borneo reconstructed with stable carbon isotopes of enamel. *Journal of Anthropological Archaeology* **22**, 292–304 (2003).
75. Fitzpatrick, S.M. & Keegan, W.F. Human Impacts and Adaptations in the Caribbean Islands: A Historical Ecology Approach. *Transactions of the Royal Society of Edinburgh: Earth & Environmental Sciences* (2007).
76. Prebble, M. & Dowe, J.L. The late Quaternary decline and extinction of palms on oceanic Pacific islands. *Quaternary Science Reviews* **27**, 2546-2567 (2008).
77. Prebble, M. & Wilmshurst, J.M. Detecting the initial impact of humans and introduced species on island environments in Remote Oceania using palaeoecology. *Biological Invasions* **11**, 1529-1556 (2009).
78. Fall, P. L. in *Altered ecologies: Fire, climate and human influence on terrestrial landscapes* (eds Haberle, S.G., Stevenson, J., Prebble, M.) Pages 253–271 (Canberra, The Australian National University: Terra Australis 32, ANU E-Press, 2010).
79. Steadman, D.W. *Extinction and biogeography of tropical Pacific birds*. University of Chicago Press (2006).
80. Sheil, D. *et al.* *The impacts and opportunities of oil palm in Southeast Asia: What do we know and what do we need to know?* Bogor, Indonesia: CIFOR, Occasional paper no. 51 (2009).

81. Fearnside, P.M., Leafly, N. Jr. & Fernandes, F.M. Rainforest burning and the global carbon budget: biomass, combustion efficiency and charcoal formation in the Brazilian Amazon. *Journal of Geophysical Research, Atmospheres* **98**, 16733-16743 (1993).
82. Iriarte, J. *et al.* Fire-free land use in pre-1492 Amazonian savannas. *Proceedings of the National Academy of Sciences, USA* **109**, 6473-6478 (2012.)
83. Preston, D. Exclusive: Lost City Discovered in the Honduran Rain Forest. *National Geographic* <http://news.nationalgeographic.com/2015/03/150302-honduras-lost-city-monkey-god-maya-ancient-archaeology/> (2015).
84. Edwards, P. *Cambodge: The Cultivation of a Nation, 1860-1945*. Hawaii: University of Hawaii Press (2007).
85. Meggers, B.J. Environmental limitation on the development of culture. *American Anthropologist* **56**, 801-824 (1954).
86. Fisher, C.T. *et al.* Identifying Ancient settlement patterns through LiDAR in the Mosquitia region of Honduras. *PLoS ONE* **11**, e0159890. doi:10.1371/journal.pone.0159890 (2016).
87. Webster, D. *The Fall of the Ancient Maya: Solving the Mystery of the Maya Collapse*. London: Thames and Hudson, (2002).
88. Larsen, M.C. Contemporary human uses of tropical forested watersheds and riparian corridors: ecosystem services and hazard mitigation, with examples from Panama, Puerto Rico, and Venezuela. *Quaternary International* <http://dx.doi.org/10.1016/j.quaint.2016.03.016> (2016).
89. Davis-Salazar, K.L. Late Classic Maya drainage and flood control at Copan, Honduras. *Ancient Mesoamerica* **17**, 125-138 (2006).
90. McAnany, P. A., Gallaretta Negrón, T. Bellicose rulers and climatological peril? Retrofitting twenty-first century woes on eighth-century Maya society. In McAnany, P.A., Yoffee, N. (eds.) *Questioning collapse: human resilience, ecological vulnerability, and the aftermath of empire*. Pp. 142-175 (2010).
91. Beach, T., Dunning, N., Luzzadder-Beach, S., Cook, D.E. & Lohse, J. Impacts of the ancient Maya on soils and soil erosion in the central Maya Lowlands. *Catena* **65**, 166-178 (2006).
92. Labrière, N., Locatelli, B., Laumonier, Y., Freycon, V. & Bernoux, M. Soil erosion in the humid tropics: A systematic quantitative review. *Agriculture, Ecosystems and Environment* **203**: 127-139 (2015).
93. Ford, A. & Nigh, R. *The Maya Forest Garden: Eight Millennia of Sustainable Cultivation of the Tropical Woodlands*. London: Routledge (2015).
94. McNeil, C.L. Deforestation, agroforestry, and sustainable land management practices among the Classic period Maya. *Quaternary International* **249**, 19-30 (2012).
95. Neves, E.G. In *Handbook of South American archaeology* (eds Silverman, H. & Isbell, W) 359-379 (New York, NY: Springer, 2008).
96. Fletcher, R. Low-density, agrarian-based urbanism: A comparative view. *Insights* **2**, 2-19 (2009).
97. Simon, D. & Adam-Bradford, A. Archaeology and contemporary dynamics for more sustainable, resilient cities in the peri-urban interface. *Balanced Urban Development: Options and Strategies for Liveable Cities* **72**, 57-83 (2016).
98. Buckley, B.M. *et al.* Climate as a contributing factor in the demise of Angkor, Cambodia. *Proceedings of the National Academy of Sciences, USA* **107**, 6748-6752 (2010).

99. Lucero, L.J., Fletcher, R. & Coningham, R. From 'collapse' to urban diaspora: the transformation of low-density, dispersed agrarian urbanism. *Antiquity* **89**, 1139-1154 (2015).
100. Barthel S. & Isendahl C. Urban gardens, agricultures and water management: sources of resilience for long-term food security in cities. *Ecological Economics* DOI:10.1016/j.ecolecon.2012.06.018 (2012).
101. Isendahl, C. & Smith, M.E. Sustainable agrarian urbanism: the low-density cities of the Mayas and Aztecs. *Cities* **31**, 132-143 (2013).
102. Bush, M. B. & Silman, M.R. Amazonian exploitation revisited: ecological asymmetry and the policy pendulum. *Frontiers in Ecology and the Environment* **5**, 457-465.94 (2007).
103. Roberts, P. 2017. In *Exploring Frameworks for Tropical Forest Conservation: managing production and consumption for sustainability* (ed Sanz, N) (Mexico City: UNESCO, 2017).
104. Rostain, S. 2017. In *Exploring Frameworks for Tropical Forest Conservation: managing production and consumption for sustainability* (ed Sanz, N) (Mexico City: UNESCO, 2017).
105. United Nations 2030. *Sustainable Development Programme*. UN Web Services Section. <http://www.un.org/sustainabledevelopment/sustainable-development-goals/>
106. Burney, D.A. Burney, L.P. Paleoecology and "inter-situ" restoration on Kaua'i, Hawai'i. *Frontiers in Ecology and the Environment* **5**, 483-490 (2007).
107. Fraser J.A., Frausin, V., Jarvis, A. An intergenerational transmission of sustainability?: Ancestral habitus and food production in a traditional agro-ecosystem of the Upper Guinea forest, West Africa. *Global Environmental Change* **31**, 226-238 (2015).
108. Sheil, D. *et al.* Do Anthropogenic Dark Earths occur in the interior of Borneo? Some initial observations from East Kalimantan. *Forests* **3**, 207-229 (2012).
109. Glaser, B. & Birk, J.J. State of the scientific knowledge on properties and genesis of Anthropogenic Dark Earths in Central Amazonia. *Geochimica et Cosmochimica Acta* **82**, 39-51 (2011).
110. Barume, A. *Heading Towards Extinction? Indigenous Rights in Africa: The Case of the Twa of the Kahuzi-Biega National Park, Democratic Republic of Congo*. Denmark: IWGIA, Denmark (2000).
111. Ocheje, P.D. "In the public interest": forced evictions, land rights and human development in Africa. *Journal of African Law* **51**, 173-214 (2007).
112. Ricardo, B. (ed.). *Deforestation in Amazonia (1970-2013)*. Sao Paulo: Instituto SocioAmbiental, (2012).
113. Rocha, B.C., Jácome, C., Stuchi, F.F., Mongeló, G.Z. & Valle, R. Arqueologia pelas gentes: um manifesto. Constatações e posicionamentos críticos sobre a arqueologia brasileira em tempos de PAC. *Revista de Arqueologia* **26/1**: 130-140 (2013).
114. Clement, C.R. *et al.* The domestication of Amazonia before European conquest. *P Roy Soc Lond B Bio* **282**: 20150813.malhi. (2015).
115. Hobbs, R.J., Higgs, E. & Harris, J.A., Novel ecosystems: implications for conservation and restoration. *Trends in ecology & evolution* **24**, 599-605 (2009).
116. Bonell, M., Bruijnzeel, L.A. *Forests, water and people in the humid tropics: past, present and future hydrological research for integrated land and water management*. Cambridge: Cambridge University Press/UNESCO (2005).
117. UNESCO. *World Heritage Forests*. World Heritage, Vol. 61. <http://unesdoc.unesco.org/images/0021/002139/213912e.pdf> (2011).

References for Figures

118. Barker, G. et al.. Transitions to farming in Island Southeast Asia: archaeological, biomolecular and palaeoecological perspectives. In G. Barker, M. Janowski (eds.). *Why cultivate? Anthropological and archaeological approaches to foraging-farming transitions in Southeast Asia*. Cambridge: McDonald Institute for Archaeological Research, 59–72 (2011).
119. Hunt, C.O., Rabett, R.J. Holocene landscape intervention and plant food production strategies in island and mainland southeast Asia. *Journal of Archaeological Science* **51**, 22-33 (2014).
120. Marwick, B. *et al.* Early modern human lithic technology from Jerimalai, East Timor. *Journal of Human Evolution* **101**, 45-64 (2016).
121. Kershaw, A.P., van der Kaars, S., Moss, P.T. Late Quaternary Milankovitch-scale climatic change and variability and its impact on monsoonal Australasia. *Marine Geology* **201**, 81-95 (2003).
122. van der Kaars, S., Wang, X., Kershaw, P., Guichard, F., Arifin Setiabudi, D. A Late Quaternary palaeoecological record from the Banda Sea, Indonesia: patterns of vegetation, climate and biomass burning in Indonesia and northern Australia. *Palaeogeography, Palaeoclimatology, Palaeoecology* **155**,135–153 (2000).
123. Walker, M.J.C. *et al.* Formal subdivision of the Holocene Series/Epoch: a discussion paper by a Working Group of INTIMATE (integration of ice-core, marine and terrestrial records) and the Subcommission on Quaternary Stratigraphy (International Commission on Stratigraphy). *Journal of Quaternary Science* **27**, 649-659 (2012).
124. Pearsall, D. In *Encyclopedia of Archaeology* (ed Pearsall, D). 1822-1842 (Academic Press, 2008). <http://www.sciencedirect.com/science/article/pii/B9780123739629000819>
125. Clement, C.R., De Cristo-Araúgo, M., D’Eeckenbrugge, G.C., Pereira, A.A. & Picanço-Rodrigues, D. 2010. Origin and domestication of native Amazonian crops. *Diversity* **2**, 72-106.
126. Piperno, D.R. The origins of plant cultivation and domestication in the New World tropics: patterns, process, and new developments. *Current Anthropology* **52**, S453-S470 (2011).
127. Kingwell-Banham, E. & Fuller, D.Q. Shifting cultivators in South Asia: expansion, marginalization and specialization over the long term. *Quaternary International* **249**, 84-95 (2012).
128. Storey, A.A. et al. Investigating the global dispersal of chickens in prehistory using ancient mitochondrial DNA signatures. *PLoS ONE* **7**, e39171 doi:10.1371/journal.pone.0039171.
129. Fuller, D.Q. & Hilderbrand, E. In *The Oxford Handbook of African Archaeology* (eds Mitchell, P. & Lane, P.J.) DOI: 10.1093/oxfordhb/9780199569885.013.0035 (Oxford: Oxford University Press, 2013).
130. Nagarajan, M., Nimisha, K. & Kumar, S. Mitochondrial DNA variability of domestic river buffalo (*Bubalus bubalis*) populations: genetic evidence for domestication of river buffalo in Indian subcontinent. *Genome Biology and Evolution* **7**, 1252-1259 (2015).
131. Penny, D., Chevance, J-B, Tang, D. & De Greef, S. The Environmental Impact of Cambodia’s Ancient City of Mahendraparvata (Phnom Kulen). *PLoS ONE* **9**, e84252. doi:10.1371/journal.pone.0084252 (2014).