



# University of HUDDERSFIELD

## University of Huddersfield Repository

Harrison, Robert W., Amari, H., Greaves, Graeme, Donnelly, S. E. and Hinks, J. A.

TEM with in situ Ion Irradiation of Nuclear Materials under In-Service Conditions

### Original Citation

Harrison, Robert W., Amari, H., Greaves, Graeme, Donnelly, S. E. and Hinks, J. A. (2016) TEM with in situ Ion Irradiation of Nuclear Materials under In-Service Conditions. *Microscopy and Microanalysis*, 22 (S3). pp. 1460-1461. ISSN 1431-9276

This version is available at <http://eprints.hud.ac.uk/32276/>

The University Repository is a digital collection of the research output of the University, available on Open Access. Copyright and Moral Rights for the items on this site are retained by the individual author and/or other copyright owners. Users may access full items free of charge; copies of full text items generally can be reproduced, displayed or performed and given to third parties in any format or medium for personal research or study, educational or not-for-profit purposes without prior permission or charge, provided:

- The authors, title and full bibliographic details is credited in any copy;
- A hyperlink and/or URL is included for the original metadata page; and
- The content is not changed in any way.

For more information, including our policy and submission procedure, please contact the Repository Team at: [E.mailbox@hud.ac.uk](mailto:E.mailbox@hud.ac.uk).

<http://eprints.hud.ac.uk/>

# TEM with *in situ* Ion Irradiation of Nuclear Materials under In-Service Conditions

R.W. Harrison, H. Amari, G. Greaves, S.E. Donnelly and J.A Hinks

University of Huddersfield, Queensgate, Huddersfield, HD1 3DH, United Kingdom

Nuclear materials are subjected to extreme conditions including elevated temperatures, large numbers of atomic displacements and the introduction of gas atoms. The exact conditions faced by a material in a nuclear reactor will depend on the type of reactor, the operating conditions, elemental composition and location within the core. Atomic displacements can be measured in Displacements Per Atom (DPA) where at 1 DPA each atom has, on average, been displaced from a lattice site once. Atomic displacements are caused by the energetic products of induced nuclear reactions and of spontaneous events such as (n, $\alpha$ ) or (n,p) decay. Such transmutation reactions can also introduce light-gas atoms of He and H of which He poses the substantially-greater problem [1]. Generally, He is insoluble in structural reactor materials, diffuses rapidly and accumulates in regions of low electron-density such as grain boundaries and vacancies [2]. The combination of temperature, atomic displacements and He accumulation leads to a complex evolution of the microstructure which can have important implications for the performance of nuclear reactor components over their operational lifetime.

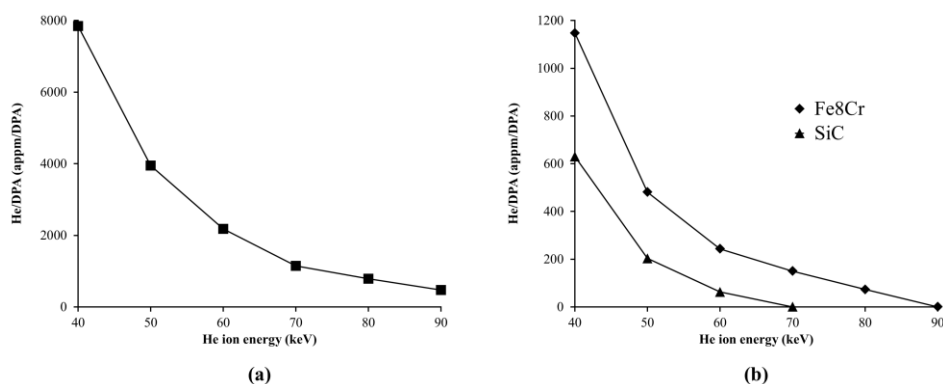
Ion irradiation can be used to induce atomic displacements and introduce gas atoms such as He. This offers several advantages over neutron irradiation including the avoidance of radioactive hazards and the ability to access end-of-life DPA and He concentrations in less than a day [3]. Furthermore, such experiments can be performed *in situ* with other techniques such as Transmission Electron Microscopy (TEM) to directly observe the microstructure during irradiation to help understand its evolution and to elucidate the fundamental mechanisms at work [3]. Typically, the electron-transparent region of a TEM sample is less than 100 nm thick. An incident He ion can cause atomic displacements and if it is of sufficient energy then there is a chance that it will exit the sample causing damage without being implanted. At higher energies, the probability that it will not stop increases and thus by careful selection of ion energy the ratio of He implantation to atomic displacements (i.e. He/DPA ratio) can be tailored.

Figure 1a shows the He/DPA-ratio curves for 50 nm of W as a function of He ion energy. Shown separately for clarity, Figure 1b illustrates the considerably-different results for Fe<sub>8</sub>Cr and SiC relative to W (note y-axis scale compared to Figure 1a). (Calculations performed using the Stoller method [4] with SRIM-2013 [5] for an incident angle 30° off normal (see below) using displacement energies,  $E_d$ , of 90, 40, 40, 15 and 28 eV for W [6], Fe [6], Cr [6], Si and C, respectively.) For example in magnetic-confinement fusion reactors, He/DPA ratios on the order of 10 appm/DPA are expected for alloys [7] but this rises to around 150 appm/DPA for SiC-based materials [8]. Alloys containing nickel (e.g. austenitic steels) may typically experience 100 appm/DPA [9] in a thermal-neutron spectrum but only 0.1 appm/DPA [7] when exposed to fast neutrons. Thus, although the ratio of He/DPA can vary by around three orders of magnitude, it is possible to match such conditions in TEM samples using He ion energies in the range of 40–100 keV. Performing irradiations with *in situ* TEM gives access to dose levels from virgin to end-of-life and the use of traditional heating holders allows access to all relevant regimes from room temperature to 1300°C (or higher with holders utilising MicroElectroMechanical Systems (MEMS)). Therefore it is possible to tailor experiments to explore a three-dimensional experimental-parameter space in which the three axes are temperature, He/DPA ratio and fluence (which can be equated to DPA or implanted He). To explore this parameter space, W samples prepared by electrochemical-jet polishing

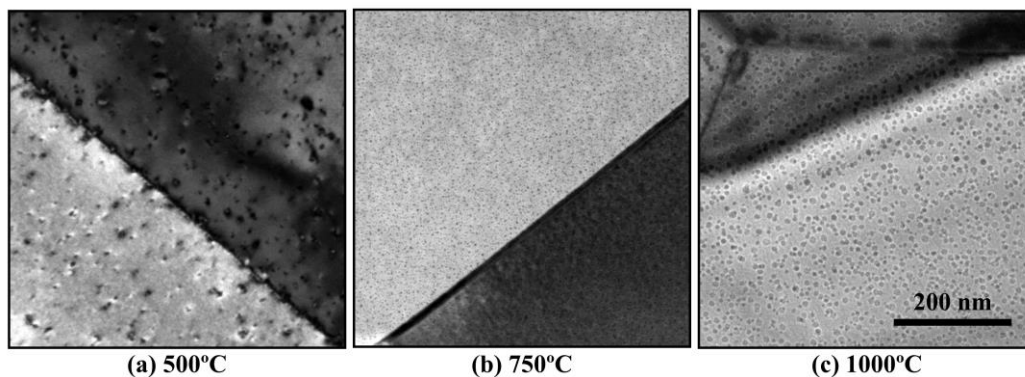
were irradiated with 60 keV He ions ( $\text{He/DPA} = 2000 \text{ appm/DPA}$ ) incident at  $30^\circ$  from the surface normal at a flux of  $6.8 \times 10^{13} \text{ ions.cm}^{-2}.\text{s}^{-1}$  in the Microscope and Ion Accelerator for Materials Investigations (MIAMI-1) facility (described in detail elsewhere [10]) at temperatures of 500, 750 and  $1000^\circ\text{C}$ . Figure 2 shows micrographs of three irradiations to 1.0 DPA at three different points along the temperature axis. In the irradiation performed at  $500^\circ\text{C}$ , the microstructure is dominated by black-spot defect clusters but at  $750^\circ\text{C}$  ( $\approx 0.3T_m$ ) resolvable bubbles are formed. At  $1000^\circ\text{C}$ , the bubbles exhibit a larger mean-size and lower areal-density. By filling three-dimensional matrices with such results obtained under consistent conditions for different materials, it will be possible to identify trends and predict behaviours of nuclear materials under consideration or already in-service and to guide the development of new materials [11].

## References

- [1] M.R. Gilbert, S.L. Dudarev, S. Zheng, L.W. Packer, J.-C. Sublet, *Nucl. Fusion* **52** (2012) p083019
- [2] H. Trinkaus, B. Singh, *J. Nucl. Mater.* **323** (2003) p229
- [3] J.A. Hinks, *J. Mater. Res.* **30** (2015) p1214
- [4] R.E. Stoller et al., *NIMB* **310** (2013) p75
- [5] J.F. Ziegler, M.D. Ziegler, J.P. Biersack *NIMB* **268** (2010) p1818
- [6] ASTM E521-96(2009)e2
- [7] L. Mansur et al., *J. Nucl. Mater.* **329–333** (2004) p166
- [8] M.E. Sawan, Y. Kato, L.L. Snead, *J. Nucl. Mater.* **442** (2013) S370
- [9] E. Lee, J. Hunn, T. Byun, L. Mansur, *J. Nucl. Mater.* **280** (2000) p18
- [10] J.A. Hinks, J.A. van den Berg, S.E. Donnelly, *J. Vac. Sci. Technol. A* **29** (2011) p021003
- [11] Funded by the UK's EPSRC under grant EP/M011135/1



**Figure 1.** SRIM [5] results of He/DPA ratios versus ion energy for: (a) W; and (b) Fe8Cr and SiC.



**Figure 2.** Bright-field over-focus TEM micrographs of W irradiated with 60 keV He ions to 1.0 DPA.