

Advanced Functional Materials

Ultrafast Switching in avalanche-driven Ferroelectrics by Supersonic Kink Movements

--Manuscript Draft--

Manuscript Number:	adfm.201700367R1
Full Title:	Ultrafast Switching in avalanche-driven Ferroelectrics by Supersonic Kink Movements
Article Type:	Full Paper
Section/Category:	
Keywords:	supersonic wall movements, kinks, ferroelastic walls, ferroelectric switching, avalanche formation, cracking noise, acoustic emission
Corresponding Author:	Ekhard K.H. Salje, Ph.D. University of Cambridge Cambridge, UNITED KINGDOM
Additional Information:	
Question	Response
Please submit a plain text version of your cover letter here. If you are submitting a revision of your manuscript, please do not overwrite your original cover letter. There is an opportunity for you to provide your responses to the reviewers later; please do not add them here.	Dear Editor We herewith submit a paper which shows that supersonic movements of kinks and ferroelectric markers is possible. This opens the way for a revolution in high speed ferroelectric memory devices. It is based on the idea that switchable information is contained in the fine structure of domain boundaries and not in the (much slower) bulk.
Corresponding Author Secondary Information:	
Corresponding Author's Institution:	University of Cambridge
Corresponding Author's Secondary Institution:	
First Author:	Ekhard K.H. Salje, Ph.D.
First Author Secondary Information:	
Order of Authors:	Ekhard K.H. Salje, Ph.D. Xiaofei Wang Xiangdong Ding James F. Scott
Order of Authors Secondary Information:	
Abstract:	Devices operating at GHz frequencies can be based on ferroelectric kink-domains moving at supersonic speed. The kinks are located inside ferroelastic twin boundaries and are extremely mobile. Computer simulation shows that strong forcing generates velocities well above the speed of sound. Kinks are accelerated from $v=0$ continuously with Döring masses in the order of skyrmion masses under constant strain rates. Moving kinks emit phonons at all velocities, the emission cones coincide with the Mach cones at supersonic speed. Kinks form avalanches with the emission of secondary kinks via a mother-daughter nucleation mechanism and may be observable in acoustic emission experiments. Supersonic kinks define a new type of materials: while mobile domains are the key for ferroelastic and ferroelectric device applications at low frequencies we expect that fast kink movements replace such domain movements for materials applications at high frequencies.

DOI: 10.1002/ ((No. adfm.201700367))

Article type: Full Paper

Ultrafast Switching in avalanche-driven Ferroelectrics by Supersonic Kink Movements

E.K.H. Salje, X. Wang, X. Ding, and J.F. Scott*

Prof. E.K.H. Salje, X. Wang and Prof. X. Ding

*State Key Laboratory for Mechanical Behavior of Materials, Xi'an Jiaotong University, Xi'an
710049, China*

E-mail: ekhard@esc.cam.ac.uk (E.K.H.S.)

Prof. E.K.H. Salje

Department of Earth Sciences, University of Cambridge, Cambridge CB2 3EQ, UK

Prof. J.F. Scott

*School of Chemistry and School of Physics and Astronomy, St. Andrews University, St.
Andrews, KY169ST, UK*

Keywords: supersonic wall movements, kinks, ferroelastic walls, ferroelectric switching,
avalanche formation, cracking noise, acoustic emission

Devices operating at GHz frequencies can be based on ferroelectric kink-domains moving at supersonic speed. The kinks are located inside ferroelastic twin boundaries and are extremely mobile. Computer simulation shows that strong forcing generates velocities well above the speed of sound. Kinks are accelerated from $v=0$ continuously with Döring masses in the order of skyrmion masses under constant strain rates. Moving kinks emit phonons at all velocities, and the emission cones coincide with the Mach cones at supersonic speed. Kinks form avalanches with the emission of secondary kinks via a mother-daughter nucleation mechanism and may be observable in acoustic emission experiments. Supersonic kinks define a new type of materials: while mobile domains are the key for ferroelastic and ferroelectric device applications at low frequencies, we expect that fast kink movements replace such domain movements for materials applications at high frequencies.

1. Introduction

1
2
3
4
5 Ferroelastic switching is traditionally undertaken at time scales below the speed of sound,
6
7 where pinning-depinning effects dominate the mobility of domain walls. Progress towards
8
9 high frequency devices requires domain movements at supersonic speed. This is impossible
10
11 for traditional ferroelectric switching that is based on the sideways movement of domain walls
12
13 or, possibly, needle domains. We show in this paper that kinks inside domain walls can travel
14
15 with supersonic speed under realistic external forcing. Such ‘walls inside walls’ are hence a
16
17 **solution** for the development of high-speed devices.

18
19
20
21
22 Coupling between the switchable parameter with elastic forces was already identified as the
23
24 main obstacle to high-speed switching^[1] with high-energy losses when wall velocities
25
26 approach that of transverse or longitudinal sound waves. This applies even for magnetic
27
28 materials where coupling between magnetism and strain is usually weak. The Ramesh group
29
30 observed fast switching of ferroelectric walls.^[2] Unfortunately, the limited time resolution of
31
32 their experiment (switching time 220 ps) did not allow the exact determination of the
33
34 characteristic time scale of the wall switching, but it can be estimated to be slightly below the
35
36 speed of transverse sound waves. Coupled ultrafast polarization dynamics in ferroelectric
37
38 nanolayers were reported by Korff Schmising et al.^[3] Jiang et al.^[4,5] demonstrated
39
40 subpicosecond domain switching in $\text{Pb}(\text{Zr}_{0.35}\text{Ti}_{0.65})\text{O}_3$. Their description may well relate to
41
42 kink movements although the huge temperature range of these experiments may relate to
43
44 classic domain movements – including the possibility of quantum critical behavior at
45
46 sufficiently low temperatures. The high mobility of kink movement is geometrically akin to
47
48 dislocation dynamics whereby dislocations show frequency dependent damping with limiting
49
50 behavior of transonic and supersonic dislocations observed in computer experiments.^[6-16]
51
52 Propagating shear cracks,^[17-20] mechanical twinning,^[21-23] phase transition due to shock
53
54 waves,^[24] dust particle motion in plasmas,^[25] ruptures and earthquakes^[26,27] approach the
55
56
57
58
59
60
61
62
63
64
65

speed of sound and, in some cases, may lead to supersonic wave propagation.

1
2 Kinks in ferroelastic twin walls can be continuously accelerated from a static position to
3
4 supersonic speed **in contrast to dislocations investigated in** ^[6]. Kinks are not necessarily
5
6 ferroelectric but often carrying secondary properties^[28] such as ferroelectricity,^[29] polarity,^{[30-}
7
8 ^{32]} (super-) conductivity,^[33,34] and magnetism.^[35] Complex wall structures can also form glass
9
10 phases^[36,37] with ferroelectric properties. Kinks are singularities inside domain walls and we
11
12 argue that such ‘walls in walls’ are the key elements in the development of ferroic or
13
14 superconducting **(Josephson devices in ferroelastic superconductors)** devices that operate on a
15
16 picosecond time scale. Previous simulations of walls in ferroelastics showed already acoustic
17
18 emission^[38-41] and speeds close to the sound barrier. A direct connection between traveling
19
20 kinks and electric currents^[42,43] and dipolar switching^[44-48] was anticipated so that fast kink
21
22 movements will typically induce equivalent polar front propagation. We show in this paper
23
24 for the first time that supersonic movements in ferroic materials are related to such travelling
25
26 kinks rather than any other of the complex movements of twin boundaries.
27
28
29
30
31
32
33
34
35

36 2. Results and Discussion

37 **2.1. Moving kink inside a ferroelastic wall**

38
39
40
41
42 Figure 1 shows a static kink (or latch in three dimensions) as the fundamental element in our
43
44 approach. This kink moves under shear stress. The direction of travel is determined by the
45
46 energy gain by increasing the energetically favorable domain and reducing the un-favorable
47
48 domain.
49
50
51
52
53
54
55
56
57
58
59
60
61
62
63
64
65

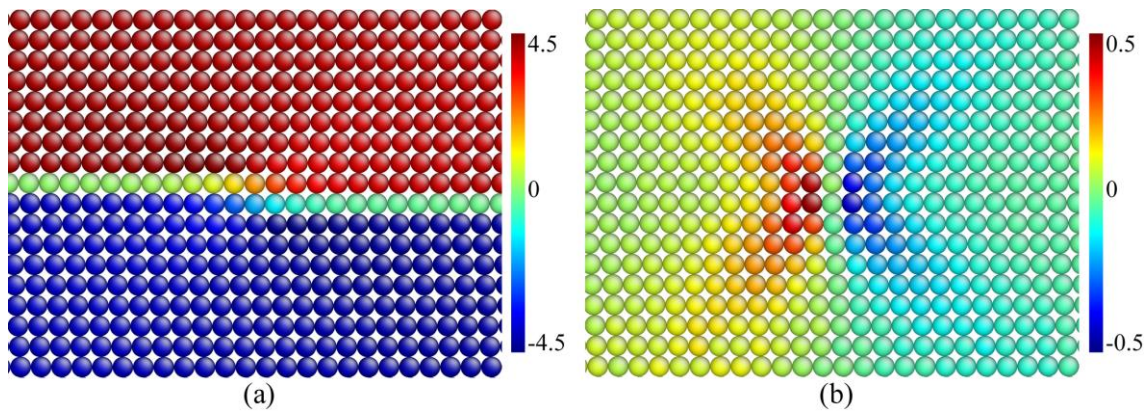


Figure 1. A static kink shown by the vertical shear angle (a) and the horizontal shear angle (b). The strain field in (b) is similar to those of shear dislocations.

The overall location of the twin wall does not change, only the kink inside the twin wall moves until it hits the sample surface. The self-energy of a moving wall diverges in Landau-Ginzburg theory as $E \sim (1-v^2/c^2)^{-0.5}$ where c is the relevant sound velocity and v is the wall velocity.^[47] This divergence stems from the one-dimensional character of the wall movement where the propagation direction coincides with the strain gradient as discussed in detail in ^[47]. Kinks do not suffer from this singularity because the propagation and the strain gradient are rotated by 45° with respect to each other (Figure 1b) so that any analytical description is intrinsically two-dimensional avoiding the mass renormalization. Nevertheless, moving kinks also dissipate energy and this dissipation is the ‘stumbling block’ for high-speed applications. Kinks within the most commonly discussed Φ_4 model (the self energy is a 4th order polynomial) contain ‘wobbles’ as internal degrees of freedom.^[48] Certain speeds in excess of the sound barrier are theoretically stable in Φ_4 and generate emanating elastic waves during the propagation of the kink.^[48-52] Our MD simulations of ‘realistic’ ferroelastic kinks show that the situation is different: moving kinks emit secondary elastic waves for all velocities, in the supersonic scenario the emitted waves form Mach cones.

Ballistic movement of domain walls are characterized by the Döring mass,^[53,54] which measures the increase of the wall energy under acceleration.^[55] Positive and negative Döring masses are linked to the stability of driven magnetic domain walls.^[56] The kink or ledge becomes a localized region in two-dimensions, topologically equivalent to a dot, which moves under the effect of an applied external strain (Figure 2).

We calculated the Döring mass at a strain rate of 10^7 /s in which the change of velocity can reach to a steady state within our simulation time. As shown in Figure 2, the acceleration in the steady state is 9.3×10^9 km/s² and the energy loss is 0.04992 eV. The kink moves over a distance of 379.3 Å. The kinetic mass (Döring mass) of the kink is hence 2.26×10^{-26} kg or 13.64 amu. Our atomic mass is 10 amu so that the Döring mass of the kink is slightly larger than that of one atom. The equivalent mass density of the ledge is expected to be in the order of 2×10^{-26} N kg/m where N is the number of crystallographic repetition lengths inside the ledge.

We compare this mass with magnetic domain walls and skyrmions, and find that the mass of kinks are slightly less than skyrmions and magnetic walls (Figure 2). A typical magnetic mass density is $M \approx 10^{-9}$ kg m⁻²^[55] so that a patch of some 30×30 Å² would have a similar mass of our kink. Inertia effects are usually neglected in metallic ferromagnets, as they are much smaller than eddy current dissipation.^[57] Zapperi et al.^[58] found a large negative mass - 7×10^{-5} kg m⁻². A skyrmion mass has been estimated with a lower limit of 8×10^{-22} kg^[59] which is much larger than domain wall masses as measured by Bedau et al.^[60] Their characteristic domain wall masses were 5.6×10^{-25} kg for the transverse and 6.2×10^{-24} kg for the longitudinal walls, and 6.3×10^{-25} kg for the free and pinned vortex. Martinez and Jalil^[61] estimated a light Döring mass of a skyrmion as ca. 10^{-25} kg, which is slightly heavier than our Döring mass per unit cell in the kink.

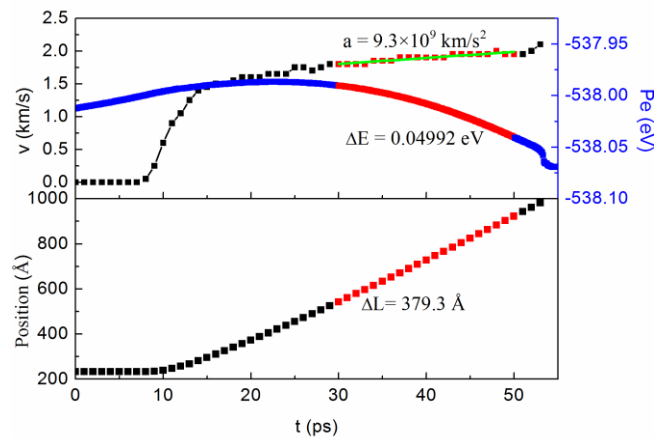


Figure 2. Accelerated movement of kinks at a strain rate of $10^7/s$. The kink is static for 7 ps and then accelerated to a speed of near 1.5 km/s. After 20 ps the kink shows a uniform acceleration of $9.3 \times 10^9 \text{ km/s}^2$.

The ballistic character of the kink movement is exemplified in kink movement when the increase of the external driving force is switched off (Figure 3). First, the kink is accelerated to velocities of 2.5 km/s, 3.5 km/s, and 6.3 km/s, respectively, when the external strain is kept constant. In the subsonic regime ($<v_{T[110]}$, 4.38 km/s), the kink approximately continues the movement at constant speed showing its ballistic characteristics (with weak dissipation, as shown in blue and pink line in Figure 3a). At speeds higher than the transverse sound velocity we find that the kink shows first some further acceleration and then a decrease of the speed (red line in Figure 3a). This decrease is related to the nucleation of pairs of secondary kinks, which travel in opposite directions in the adjacent layer above the pre-existing twin boundary. This mother – daughter mechanism^[17] relates to moving kinks, which generate subsonic kinks whereby these kinks arrive as pairs (2 daughters from each mother) and travel in opposite directions without changing the momentum of the mother kink.

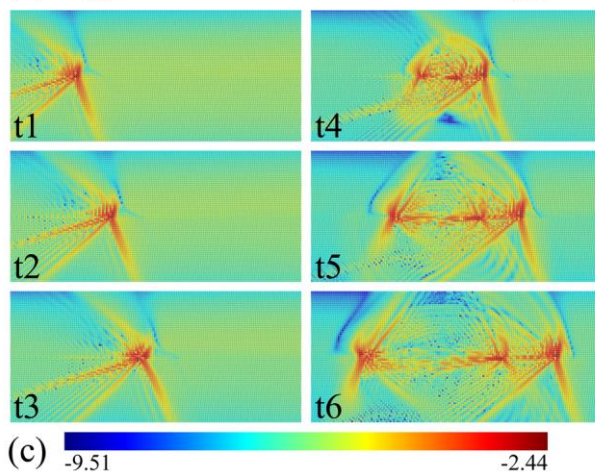
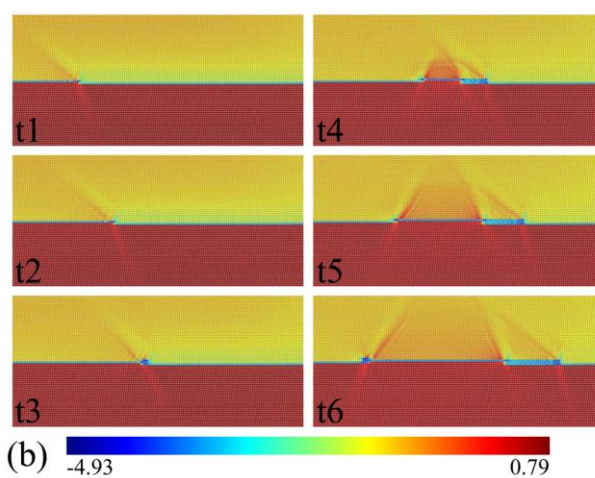
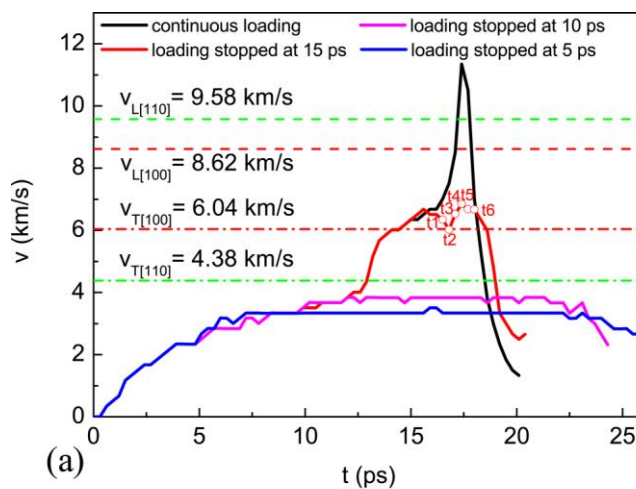


Figure 3. Ballistic movement and the mother-daughter mechanism for kinks. (a) evolution of kink velocities with time. The kink is accelerated to velocities of 2.5 km/s, 3.5 km/s, and 6.3 km/s, when loading is stopped at 5ps, 10ps and 15ps, respectively; in contrast, the evolution of kink velocity under continuous loading is shown in black line. (b),(c) mother-daughter mechanism for kinks with atoms colored by $|\theta_v| - 4.0 + \theta_h$ and \log_{10} (kinetic energy), respectively. The mother kink travels with supersonic speed to the right. At t3 two daughter kinks nucleate and travel subsonically in opposite directions (t4-t6). The mother kink shows a

supersonic cone.

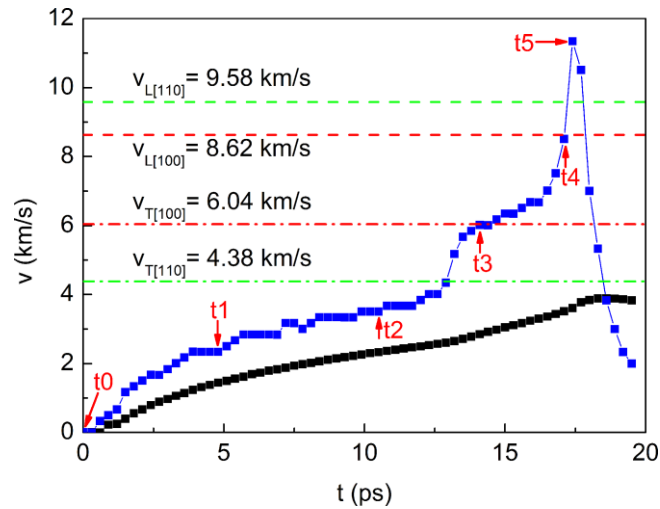


Figure 4. Velocity evolution of the kink at strain rate of $10^9/s$. The black curve gives the speed x/t , the blue curve is the local speed dx/dt where x is the traveled position and t is the time. The kink is accelerated from a static position (t_0) to a maximum local velocity of 11.35 km/s (t_5) before it hits the surface. Note that supersonic speeds do not require high-speed initial conditions, as is the case for dislocations.^[6] The various sound velocities are shown by horizontal lines.

The speed of the traveling kink under a strain rate of $10^9/s$ is shown in Figure 4. The kink is first accelerated from a static position to a speed of near 4 km/s near the sound velocity $v_{T[110]}=4.38$ km/s. While progressing some 200 atomic positions on this plateau, the kink reaches the transverse sound velocity at $v_{T[100]}=6.04$ km/s and shows a second plateau at this speed. Further acceleration leads to a maximum velocity (11.35 km/s) before the end of the sample is reached which is greater than the longitudinal sound speed in [100] ($v_{L[100]}=8.62$ km/s) and [110] direction ($v_{L[110]}=9.58$ km/s). No plateau was found at the crossing of $v_{L[100]}$ or $v_{L[110]}$ (Figure 4). The kink profiles change during the movement. Phonons are emitted from the moving kink at all finite velocities while the static kink only induces a strain field similar to that of an edge dislocation.^[62,63] Strain related to the emitted sound at subsonic speeds is the lowest energy excitation of a transverse sound wave along [110] showing a backwards cone

with an opening angle of 45° . This signal remains strong for all subsonic speeds. Additional waves are seen when the speed exceeds transverse sound velocity ($v_{T[110]}$ and $v_{T[100]}$) where the cone angle α approaches 31° (t4, Figure 5) at a slightly higher velocity of 8.51 km/s. In the Mach construction, we find $\sin \alpha = c/v$ where v is the speed of the propagating kink and c is the wave velocity. For a kink speed of 8.51 km/s we find $c = 4.38$ km/s which is exactly the transverse sound speed in the [110] direction. Simultaneously, the halo of the $v_{L[100]}$ velocity (8.62 km/s) is clearly visible.

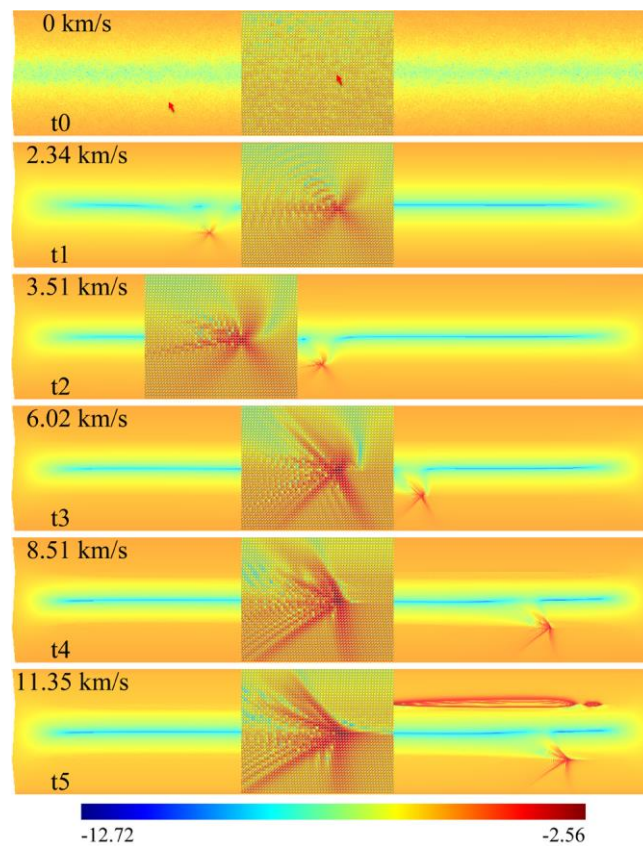


Figure 5. Phonon cones for various speeds colored by $\log_{10}(\text{kinetic energy})$. Starting from static (t0), the kink is accelerated to subsonic (t1-t2), transonic (t3-t4) and supersonic (t5) regimes, the inserted figures at t1-t5 show the corresponding wave emissions at different speeds. The red arrow in the top panel indicates the position of the static kink.

2.2. Experimental evidence for high-speed ferroelectric switching

Metaxas et al. speculated in 2007 that three distinct regimes of domain wall motion are

generally predicted: creep, de-pinning, and hydrodynamic flow.^[64] However, they emphasized that the flow regime had not been experimentally accessible, because it requires such large nonlinear stresses that samples might not physically survive. Such a hydrodynamic flow regime is however well studied in ferroelectric smectic liquid crystals, and involves several instabilities related to folding,^[65] including the Parodi instability and the Bobylev-Pikin instability. A general review of such non-equilibrium patterning has been given by Cross and Hohenberg.^[66] Size reduction was stimulated similar to the simulations described in the section above, for the special case of ferroelectric nano-domains nestled inside slightly larger ferroelastic domains were investigated.^[67,68] These systems exhibit wrinkling and folding, chevron structures at angles different from 90 degrees, and non-exponential relaxation motions.^[68] The fact that they exist in super-domain configurations arises from the fact that the ferroelectric domains can organize into blocks such that average polarization $\langle P \rangle = 0$, but these blocks have a nonzero net strain $\langle S \rangle$, which can also be made to average zero by clustering blocks into a super-domain. Note that the ferroelectric blocks are always inside the ferroelastic blocks and never vice-versa; this is because the polarization coherence length is screened but strain is unscreened. Our results show that ferroelectric kinks in ferroelastic walls fulfill the same conditions but also reduce the dimensionality of the problem.

In this paper we showed that a similar distinction has to be made between lateral twin wall movements, which cannot be supersonic in classic theory, and movements of kinks inside domain walls, which are supersonic under sufficient forcing.

Notable is the prediction that the folding instabilities occur with a dependence upon film thickness d as $d^{4/9}$,^[69,70] which is not yet confirmed experimentally but could be measured with wedge-shaped films. We also remind readers that domain walls have been driven to produce a nonlinear flow by applied voltages,^[71] but thus far only at low velocities. Some ferroelastic domains that appear to be the result of nonlinear viscous are thixotropic, like toothpaste (viscosity decreases with time at constant stress), or superplastic, or exhibit

overshoot. A general review is given in ^[72] and the specific application of Mittag-Leffler models of relaxation to dielectrics, with power laws, in ^[73]. The fastest switching observed for ferroelectric domains is about 1-2 ps^[3-5], and the lowest coercive voltages, about 250 mV, both across a 6 nm film.^[74] If we assume that a 2 ps time involves nucleation entirely at one electrode, then the wall velocity is $6 \text{ nm}/2 \text{ ps} = 3 \text{ km/s}$, which is very nearly the speed of sound. So the ultrasonic simulations are plausible, particularly as they are supported by the observation of acoustic phonon emission during switching.^[75] As with the original experiments of Demokritov et al.,^[76,77] it would be highly desirable to measure the emission angle of these acoustic phonons in Figure 5; as with bow waves or Cerenkov radiation, this angle would give a precise value of supersonic wall velocity, as has been shown in our simulations. Although we cannot yet measure directly this ultrafast switching, Gruverman has shown how to do so with a progressive series of single-frame piezoresponse force microscope measurements that are reassembled like a slow-motion video.^[78] Such data should be available in the near future. In addition, we have strong indirect evidence for the requisite high-strain situation in the form of domain wall period-doubling. Period doubling of ferroelastic domain widths is predicted at high stress.^[79] This has been observed in the time domain in unrelated work on illuminated microcrystals in fluids by one of us, with a sharp threshold at modest cw laser power.^[80] In additions, high-speed kink movements were claimed from the experimental observation of high frequency resonances in Resonant Ultrasonic Spectroscopy.^[81-83]

3. Conclusion

In summary we have shown that high-speed switching becomes possible if the moving domain boundary is not the ferroelectric wall but a kink inside a ferroelastic wall. This opens the way to the use of unforeseen materials for ferroelectric device applications. Prototypic

1 materials are CaTiO_3 , which has the desired ferroelectric component of its ferroelastic walls^[30]
 2 or LiNbO_3 , which contains large number of kinks inside ferroelectric walls.^[42] Another
 3
 4 example is SrTiO_3 , which contains many ferroelastic walls and, expectedly, kinks, which may
 5
 6 carry polarity.^[45] Another example is LaAlO_3 where polarity was found in tweed structures^[43]
 7
 8 where moving kinks may be possible. We also connect our research with simulated
 9
 10 ferroelectric switching in bulk^[84] and switching in thin films.^[85] Preliminary experiments
 11
 12 exist in the literature, showing rapid domain flow at high stress levels.
 13
 14
 15
 16
 17
 18
 19
 20
 21

22 4. Experimental Section

23
 24
 25
 26
 27 Our computer simulations are based on the standard ferroelastic model; the potential energy
 28
 29 $U(r)$ is composed of three interactions, the first-nearest atomic interactions $U_{NN}=2(r-1)^2$
 30
 31 $(0.8 \leq r \leq 1.2)$, the second-nearest atomic interactions $U_{NNN}=-\frac{1}{2}(r-\sqrt{2})^2 + 200(r-\sqrt{2})^4$
 32
 33 $(1.207 \leq r \leq 1.621)$ and the third-nearest interactions $U_{NNNN}=-0.1(r-2)^4 (1.8 \leq r \leq 2.2)$, where r is
 34
 35 atomic distance vector. The shear angle is the order parameter in this model. The equilibrium
 36
 37 unit cell is a parallelogram with a shear angle of 4° . We set the equilibrium lattice constant
 38
 39 $a = 1 \text{ \AA}$ and atomic mass $M = 10 \text{ amu}$. Extensions of this generic model with one atom per
 40
 41 unit cell are discussed in^[31] and^[32]. There it is shown that the relatively high moduli for one
 42
 43 atom models decrease for more complex structures to values typical for perovskite structures.
 44
 45
 46
 47
 48
 49 Free boundary conditions are adopted and twinned sandwich structure containing two pre-
 50
 51 existing horizontal twin boundaries (HTBs) as the initial configuration. The size of our 2D
 52
 53 simulation is $1000a \times 202a$. The ratio of the height of the switchable intermediate layer to the
 54
 55 total sample is fixed to be 0.5. The system was first relaxed with a conjugate gradient
 56
 57 refinement procedure at the beginning of the simulations. Then molecular dynamics (MD)
 58
 59
 60
 61
 62
 63
 64
 65

1 was performed to anneal the configuration at a given temperature for 3×10^6 time steps. No
 2 microstructures developed, except for some surface relaxations, during this procedure. Finally,
 3
 4 at the top and bottom several layers of atoms were fixed rigidly and then sheared with a
 5
 6 constant shear strain rate in a canonical ensemble. All MD simulations were performed with
 7
 8 the LAMMPS code and the Nose- Hoover thermostat was used to hold the sample
 9
 10 temperature constant at 0.001 K.^[86-89] The movement of the kinks are adiabatic and driven by
 11
 12 a constant strain rate, in contrast to Jin et al.^[90] where the strain reduced over time. The elastic
 13
 14 moduli of the model are $c_{11} = 1233.9 \text{ GPa}$, $c_{22} = 1223.2 \text{ GPa}$, $c_{12} = 598.6 \text{ GPa}$, and $c_{66} = 606.3 \text{ GPa}$. The
 15
 16 moduli correspond to the pseudo cubic symmetry ($c_{11} = c_{22}$, $c_{12} = c_{66}$) and the central forces of
 17
 18 the model ($c_{12} = c_{11} / 2$). The speed of sound in the [100] direction is $(c_{44} / \rho)^{1/2} = 6.04 \text{ km/s}$ for
 19
 20 transverse waves and $(c_{11} / \rho)^{1/2} = 8.62 \text{ km/s}$ for longitudinal waves, ρ is the density. The
 21
 22 secondary waves velocities in the [110] direction are $((c_{11} + c_{12} + 2c_{44}) / 2\rho)^{1/2} = 9.58 \text{ km/s}$ for
 23
 24 longitudinal and $((c_{11} - c_{12}) / 2\rho)^{1/2} = 4.38 \text{ km/s}$ for transverse waves.
 25
 26
 27
 28
 29
 30
 31
 32
 33
 34
 35
 36
 37
 38
 39
 40
 41
 42
 43
 44
 45
 46
 47
 48
 49
 50
 51
 52
 53
 54
 55
 56
 57
 58
 59
 60
 61
 62
 63
 64
 65

Acknowledgements

We appreciate the support of NSFC (51320105014, 51621063, 51231008) and 111 project (B06025). E.K.H.S. is also grateful to EPSRC (EP/K009702/1) and the Leverhulme Foundation (RPG-2012-564) for support.

Received: ((will be filled in by the editorial staff))

Revised: ((will be filled in by the editorial staff))

Published online: ((will be filled in by the editorial staff))

1
2
3
4
5
6
7
8
9
10
11
12
13
14
15
16
17
18
19
20
21
22
23
24
25
26
27
28
29
30
31
32
33
34
35
36
37
38
39
40
41
42
43
44
45
46
47
48
49
50
51
52
53
54
55
56
57
58
59
60
61
62
63
64
65

Reference :

- [1] S.O. Demokritov, A.I. Kirilyuk, N.M. Kreines, V.I. Kudinov, V.B. Smirnov, M.V. Chetkin, *J. Magn. Magn. Mater.* 1991, **102**, 339.
- [2] J. Li, B. Nagaraj, H. Liang, W. Cao, Chi. H. Lee, R. Ramesh, *Appl. Phys. Lett.* 2004, **84**, 1174.
- [3] C. v. Korff Schmising, M. Bargheer, M. Kiel, N. Zhavoronkov, M. Woerner, T. Elsaesser, I. Vrejoiu, D. Hesse, M. Alexe, *Phys. Rev. Lett.* 2007, **98**, 257601.
- [4] A. Jiang, H. Lee, C. Hwang, J. F. Scott, *Adv. Funct. Mater.* 2012, **22**, 192.
- [5] A. Jiang, Z. Chen, W. Hui, D. Wu, J. F. Scott, *Adv. Funct. Mater.* 2012, **22**, 2148.
- [6] P. Gumbsch, H. Gao, *Science* 1999, **283**, 965.
- [7] P. Gumbsch, H. Gao, *J. Comput.-Aided Mater. Des.* 1999, **6**, 137.
- [8] E. Bitzek, P. Gumbsch, *Mater. Sci. Eng., A* 2004, **11**, 387.
- [9] H. Koizumi, H. O. K. Kirchner, T. Suzuki, *Phys. Rev. B* 2002, **65**, 214104.
- [10] H. Koizumi, T. Suzuki, *Mater. Sci. Eng., A* 2005, **400-401**, 76.
- [11] D. L. Olmsted, L. G. Hector, Jr., W. A. Curtin, R. J. Clifton, *Modell. Simul. Mater. Sci. Eng.* 2005, **13**, 371.
- [12] J. Marian, W. Cai, V. V. Bulatov, *Nat. Mater.* 2004, **3**, 158.
- [13] J. A. Young Vandersall, B. D. Wirth, *Philos. Mag.* 2004, **84**, 3755.
- [14] S. Q. Shi, H. C. Huang, C. H. Woo, *Comput. Mater. Sci.* 2002, **23**, 95.
- [15] H. Gao, Y. Huang, P. Gumbsch, A. J. Rosakis, *J. Mech. Phys. Solids* 1999, **47**, 1941.
- [16] P. Rosakis, *Phys. Rev. Lett.* 2001, **86**, 95.
- [17] F. F. Abraham, H. J. Gao, *Phys. Rev. Lett.* 2000, **84**, 3113.
- [18] A. J. Rosakis, O. Samudrala, D. Coker, *Science* 1999, **284**, 1337.
- [19] K. Xia, A. J. Rosakis, H. Kanamori, *Science* 2004, **303**, 1859.
- [20] M. J. Buehler, F. F. Abraham, H. J. Gao, *Nature* 2003, **426**, 141.
- [21] P. Rosakis, H. Tsai, *Int. J. Solids Struct.* 1995, **32**, 2711.
- [22] J. Červ, M. Landa, A. Machova, *Scr. Mater.* 2000, **43**, 423.
- [23] J. Bosansky, T. Smida, *Mater. Sci. Eng., A* 2002, **323**, 198.
- [24] K. Kadau, T. C. Germann, P. S. Lomdahl, B. L. Holian, *Science* 2002, **296**, 1681.
- [25] V. Nosenko, J. Goree, Z. W. Ma, D. H. E. Dubin, A. Piel, *Phys. Rev. E* 2003, **68**, 056409.
- [26] A. Sagy, Z. Reches, J. Fineberg, *Nature* 2002, **418**, 310.
- [27] E. Olson, R. M. Allen, *Nature* 2005, **438**, 212.
- [28] E. K. H. Salje, *ChemPhysChem* 2010, **11**, 940.
- [29] E. K. H. Salje, S. Li, Z. Zhao, P. Gumbsch, X. Ding, *Appl. Phys. Lett.* 2015, **106**, 212907.
- [30] S. V. Aert, S. Turner, R. Delville, D. Schryvers, G. V. Tendeloo, E. K. H. Salje, *Adv. Mater.* 2012, **24**, 523.
- [31] E. K. H. Salje, S. Li, M. Stengel, P. Gumbsch, X. Ding, *Phys. Rev. B* 2016, **94**, 024114.
- [32] T. Zykova-Timan, E.K.H. Salje, *Appl. Phys. Lett.* 2014, **104**, 082907.
- [33] J. Seidel, P. Maksymovych, Y. Batra, A. Katan, S.-Y. Yang, Q. He, A. P. Baddorf, S. V. Kalinin, C.-H. Yang, J.-C. Yang, Y.-H. Chu, E. K. H. Salje, H. Wormeester, M. Salmeron, R. Ramesh, *Phys. Rev. Lett.* 2010, **105**, 197603.
- [34] A. Aird, E. K. H. Salje, *J. Phys.: Condens. Matter* 1998, **10**, L377.
- [35] M. A. Carpenter, E. K. H. Salje, C. J. Howard, *Phys. Rev. B* 2012, **85**, 224430.
- [36] E. K. H. Salje, M. A. Carpenter, *Phys. Status Solidi B* 2015, **252**, 2639.
- [37] E. K. H. Salje, X. Ding, O. Aktas, *Phys. Status Solidi B* 2014, **251**, 2061.
- [38] E. K. H. Salje, X. Wang, X. Ding, J. Sun, *Phys. Rev. B* 2014, **90**, 064103.
- [39] L. Zhang, E. K. H. Salje, X. Ding, J. Sun, *Appl. Phys. Lett.* 2014, **104**, 162906.
- [40] E. K. H. Salje, *Annu. Rev. Mater. Res.* 2012, **42**, 265.

- [41] R. J. Harrison, E. K. H. Salje, *Appl. Phys. Lett.* 2010, *97*, 021907.
- [42] J. Gonnissen, D. Batuk, G. F., L. Jones, A. M. Abakumov, S. V. Aert, D. Schryvers, E. K. H. Salje, *Adv. Funct. Mater.* 2016, *26*, 7599.
- [43] E. K. H. Salje, M. Alexe, S. Kustov, M. C. Weber, J. Schiemer, G. F. Nataf, J. Kreisel, *Sci. Rep.* 2016, *6*, 27193.
- [44] E. K. H. Salje, Z. Zhao, X. Ding, J. Sun, *Am. Mineral.* 2013, *98*, 1449.
- [45] E. K. H. Salje, J. F. Scott, *Appl. Phys. Lett.* 2014, *105*, 252904.
- [46] E. K. H. Salje, O. Aktas, M. A. Carpenter, V. V. Laguta, J. F. Scott, *Phys. Rev. Lett.* 2013, *111*, 247603.
- [47] E. K. H. Salje, *Phase transitions in ferroelastic and co-elastic crystals*, Cambridge University Press, Cambridge, UK, 1993.
- [48] G. Kalbermann, *J. Phys. A-Math. Gen.* 2004, *37*, 11603.
- [49] I. V. Barashenkov, O. F. Oxtoby, *Phys. Rev. E* 2009, *80*, 026608.
- [50] O. F. Oxtoby, I. V. Barashenkov, *Phys. Rev. E* 2007, *76*, 036603.
- [51] S.V. Dmitriev, A. Khare, P. G. Kevrekidis, A. Saxena, L. Hadzievski, *Phys. Rev. E* 2008, *77*, 056603.
- [52] R. B. Tew, J. A. D. Wattis, *J. Phys. A-Math. Gen.* 2001, *34*, 7163.
- [53] W. Döring, *Z. Naturforschung A* 1948, *3*, 373.
- [54] A. Hubert, R. Schäfer, *Magnetic Domains*, Springer, Berlin/Heidelberg, Germany, 1998.
- [55] G. T. Rado, R. W. Wright, W. H. Emerson, *Phys. Rev.* 1950, *80*, 273.
- [56] E. Magyari, H. Thomas, *ZEITSCHRIFT FÜR PHYSIK B-CONDENSED MATTER* 1985, *59*, 167.
- [57] G. Bertotti, *Hysteresis in Magnetism*, Academic Press, San Diego, California, USA, 1998.
- [58] S. Zapperi, C. Castellano, F. Colaiori, G. Durin, *Nat. Phys.* 2005, *1*, 46.
- [59] F. Büttner, C. Moutafis, M. Schneider, B. Krüger, C. M. Günther, J. Geilhufe, C. v. Korff Schmising, J. Mohanty, B. Pfau, S. Schaffert, A. Bisig, M. Foerster, T. Schulz, C. A. F. Vaz, J. H. Franken, H. J. M. Swagten, M. Kläui, S. Eisebitt, *Nat. Phys.* 2015, *11*, 225.
- [60] D. Bedau, M. Kläui, S. Krzyk, U. Rüdiger, G. Faini, L. Vila, *Phys. Rev. Lett.* 2007, *99*, 146601.
- [61] J. C. Martinez, M. B. A. Jalil, *IEEE Trans. Magn.* 2015, *51*, 1100204.
- [62] J. P. Hirth, J. Lothe, *Theory of Dislocations*, Wiley:NewYork, NY, USA, 1982.
- [63] D. C. Parfitt, C. L. Bishop, M. R. Wenman, R. W. Grimes, *J. Phys.: Condens. Matter* 2010, *22*, 175004.
- [64] P. J. Metaxas, J. P. Jamet, A. Mougin, M. Cormier, J. Ferre, V. Baltz, B. Rodmacq, B. Dieny, R. L. Stamps, *Phys. Rev. Lett.* 2008, *99*, 2172083.
- [65] L. M. Blinov, *J. Phys. Colloques* 1979, *40*, C3-247.
- [66] M. C. Cross, P. C. Hohenberg, *Rev. Mod. Phys.* 1993, *65*, 851.
- [67] J. F. Scott, *J. Phys.: Condens. Matter* 2015, *27*, 492001.
- [68] J. F. Scott, D. M. Evans, J. M. Gregg, A. Gruverman, *Appl. Phys. Lett.* 2016, *109*, 042901.
- [69] R. Huang, *J. Mech. Phys. Solids* 2008, *56*, 3315.
- [70] L. Feigl, P. Yudin, I. Stolichnov, T. Sluka, K. Shapovalov, M. Mtebwa, C. S. Sandu, X.-K. Wei, A. K. Tagantsev, N. Setter, *Nat. Commun.* 2014, *5*, 4677.
- [71] J. R. Whyte, R. G. P. McQuaid, P. Sharma, C. Canalias, J. F. Scott, A. Gruverman, J. M. Gregg, *Adv. Mater.* 2013, *25*, 293.
- [72] S. Brazovskii, T. Nattermann, *Adv. Phys.* 2004, *53*, 177.
- [73] E. de Oliveira, F. Mainardi, J. Vaz, *Eur. Phys. J. Special Topics* 2011, *193*, 161.
- [74] R. Ramesh (private communication, Nov. 2016; Ferroics 2017, Williamsburg, VA, Feb 2017).

- [75] E. Salje, E. Dul'kin, M. Roth. *Appl. Phys. Lett.* 2015, *106*, 152903.
- [76] S. O. Demokritov, A.I. Kirilyuk, N.M. Kreines, V.I. Kudinov, V.B. Smirnov, M.V. Chetkin, *J. Magn. Magn. Mater.* 1991, *102*, 339.
- [77] S. O. Demokritov, N. M. Kreines, V. I. Kudinov, *JETP Lett.* 1985, *41*, 46.
- [78] A. Gruverman, D. Wu, J. F. Scott, *Phys. Rev. Lett.* 2008, *100*, 097601.
- [79] I. Tsatskis, E. K. H. Salje, V. Heine, *J. Phys. Condens. Matter* 1994, *6*, 11027.
- [80] K. W. McGregor, R. A. O'Sullivan, J.F. Scott, *Physica A* 1998, *254*, 358.
- [81] M. A. Carpenter, Z. Zhang, *Geophys. J. Int.* 2011, *186*, 279.
- [82] M. A. Carpenter, A. Buckley, P. A. Taylor, T. W. Darling, *J. Phys.: Condens. Matter* 2010, *22*, 035405.
- [83] M. A. Carpenter, *J. Phys.: Condens. Matter* 2015, *27*, 263201.
- [84] S. Liu, I. Grinberg, A.M. Rappe, *Nature* 2016, *534*, 360.
- [85] J. Y. Jo, S. M. Yang, T. H. Kim, H. N. Lee, J.-G. Yoon, S. Park, Y. Jo, M. H. Jung, T. W. Noh, *Phys. Rev. Lett.* 2009, *102*, 045701.
- [86] E. K. H. Salje, X. Ding, Z. Zhao, *Phys. Rev. B* 2011, *83*, 104109.
- [87] S. Plimpton, *J. Comput. Phys.* 1995, *117*, 1.
- [88] S. Nose, *J. Chem. Phys.* 1984, *81*, 511.
- [89] W. G. Hoover, *Phys. Rev. A* 1985, *31*, 1695.
- [90] Z. Jin, H. Gao, P. Gumbsch, *Phys. Rev. B* 2008, *77*, 094303.

Figures and Figure Legends

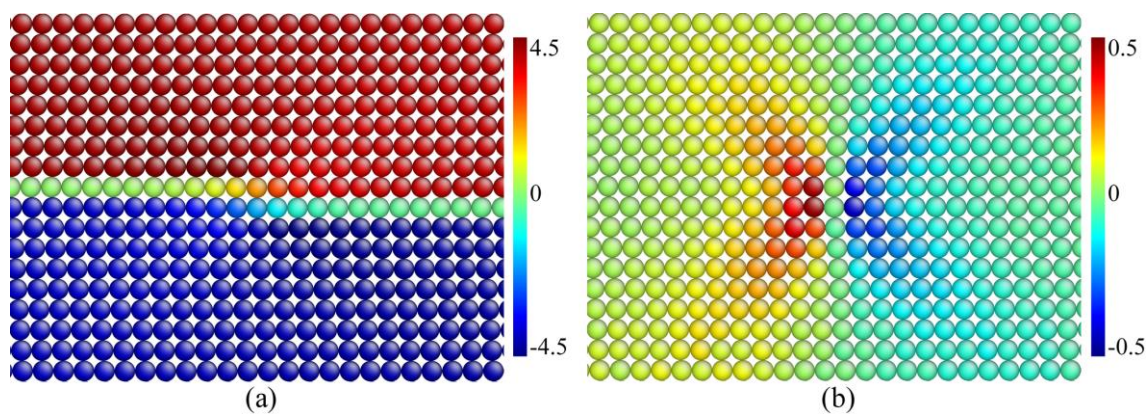


Figure 1. A static kink shown by the vertical shear angle (a) and the horizontal shear angle (b). The strain field in (b) is similar to those of shear dislocations.

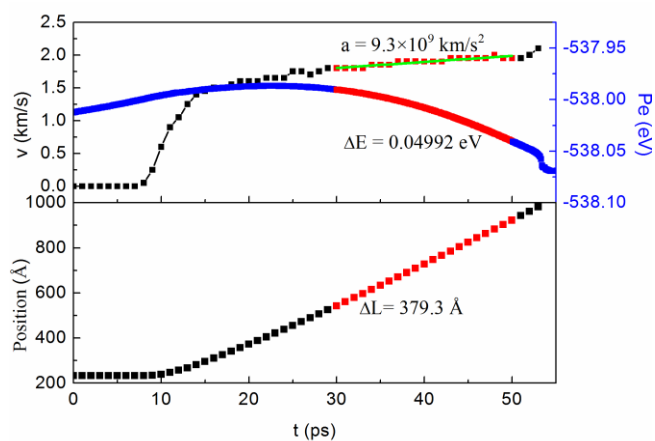


Figure 2. Accelerated movement of kinks at a strain rate of 10^7 /s. The kink is static for 7 ps and then accelerated to a speed of near 1.5 km/s. After 20 ps the kink shows a uniform acceleration of 9.3×10^9 km/s².

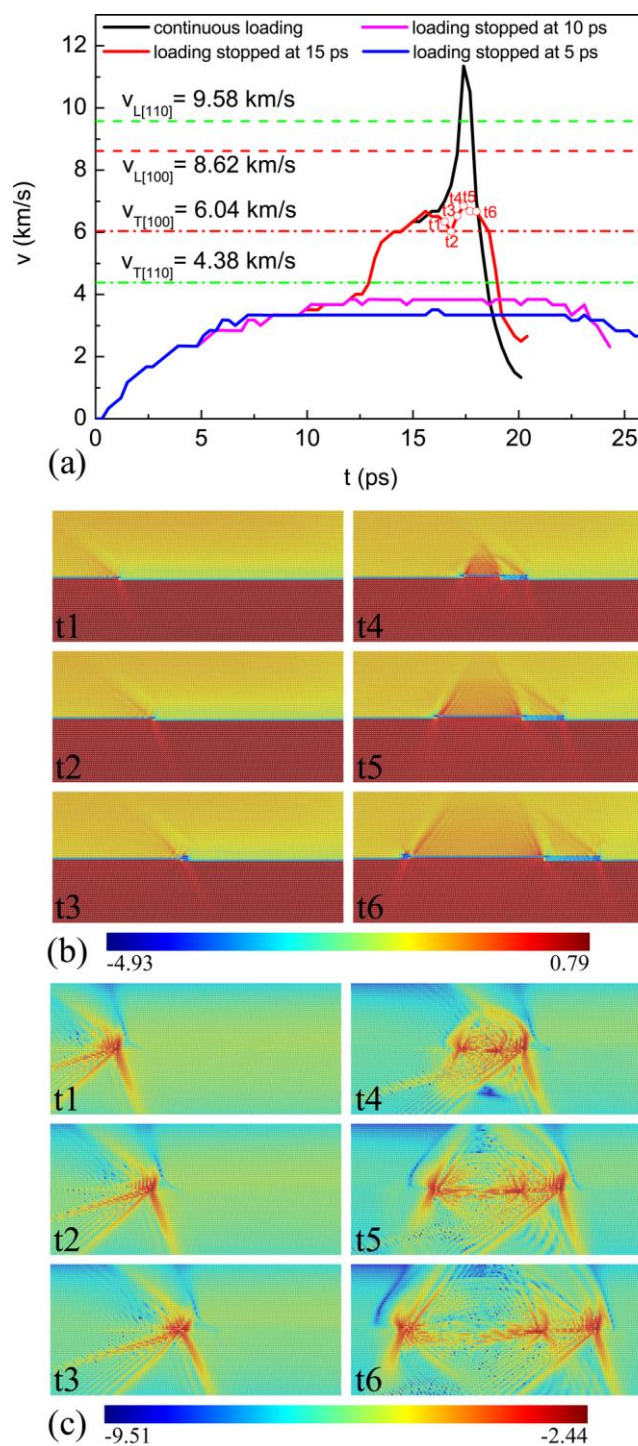


Figure 3. Ballistic movement and the mother-daughter mechanism for kinks. (a) evolution of kink velocities with time. The kink is accelerated to velocities of 2.5 km/s, 3.5 km/s, and 6.3 km/s, when loading is stopped at 5ps, 10ps and 15ps, respectively; in contrast, the evolution of kink velocity under continuous loading is shown in black line. (b),(c) mother-daughter mechanism for kinks with atoms colored by $|\theta_v| - 4.0 + \theta_h$ and \log_{10} (kinetic energy), respectively. The mother kink travels with supersonic speed to the right. At t_3 two daughter

kinks nucleate and travel subsonically in opposite directions (t_4 - t_6). The mother kink shows a supersonic cone.

1
2
3
4
5
6
7
8
9
10
11
12
13
14
15
16
17
18
19
20
21
22
23
24
25
26
27
28
29
30
31
32
33
34
35
36
37
38
39
40
41
42
43
44
45
46
47
48
49
50
51
52
53
54
55
56
57
58
59
60
61
62
63
64
65

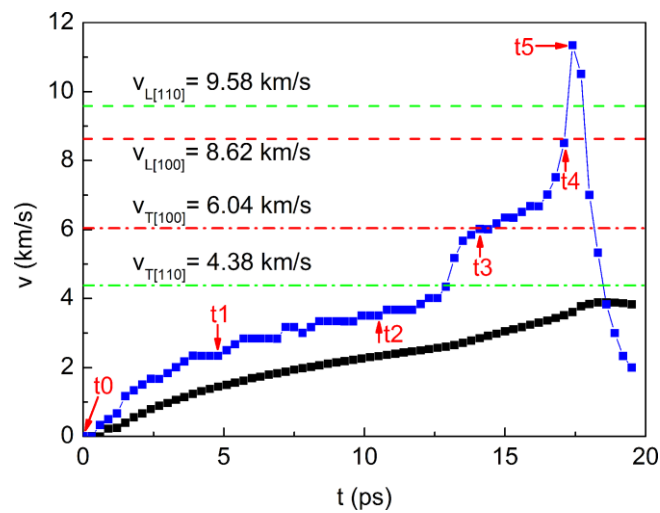


Figure 4. Velocity evolution of the kink at strain rate of $10^9/s$. The black curve gives the speed x/t , the blue curve is the local speed dx/dt where x is the traveled position and t is the time. The kink is accelerated from a static position (t_0) to a maximum local velocity of 11.35 km/s (t_5) before it hits the surface. Note that supersonic speeds do not require high-speed initial conditions, as is the case for dislocations.^[6] The various sound velocities are shown by horizontal lines.

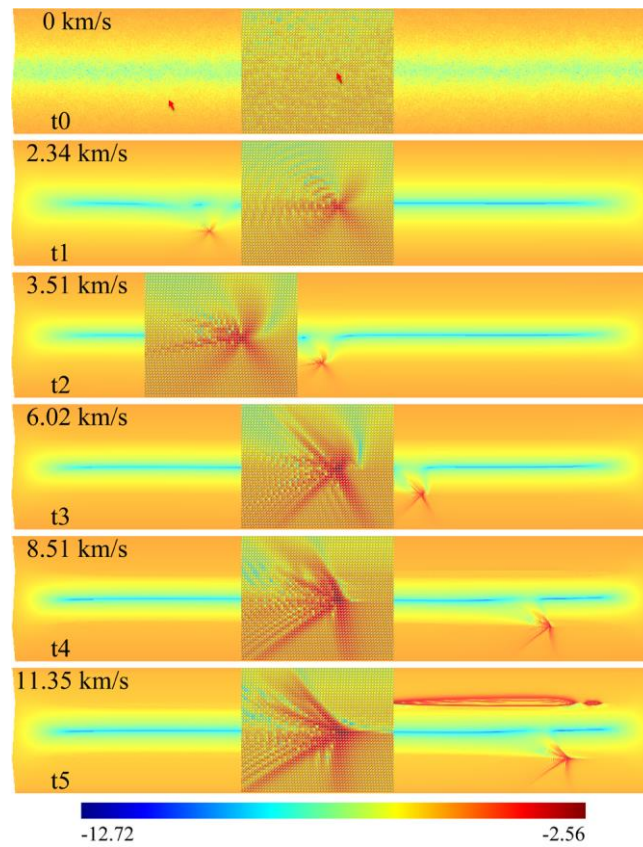


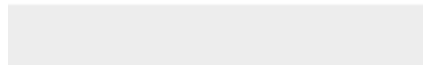
Figure 5. Phonon cones for various speeds colored by $\log_{10}(\text{kinetic energy})$. Starting from static (t0), the kink is accelerated to subsonic (t1-t2), transonic (t3-t4) and supersonic (t5) regimes, the inserted figures at t1-t5 show the corresponding wave emissions at different speeds. The red arrow in the top panel indicates the position of the static kink .



Click here to access/download

Production Data

2_eye_catching figure and words.docx







Click here to access/download
Production Data
figure 2.tif



Click here to access/download
Production Data
figure 3.tif





Click here to access/download
Production Data
figure 5.tif

