



Goodwin, C., Berman, J., Downey, R., & Hendry, K. (2017). Carnivorous sponges (Porifera, Demospongiae, Poecilosclerida, Cladorhizidae) from the Drake Passage (Southern Ocean) with a description of eight new species and a review of the family Cladorhizidae in the Southern Ocean. *Invertebrate Systematics*, 31(1), 37-64. DOI: 10.1071/IS16020

Peer reviewed version

Link to published version (if available):

[10.1071/IS16020](https://doi.org/10.1071/IS16020)

[Link to publication record in Explore Bristol Research](#)

PDF-document

This is the author accepted manuscript (AAM). The final published version (version of record) is available online via BioOne at <http://www.bioone.org/doi/abs/10.1071/IS16020>. Please refer to any applicable terms of use of the publisher.

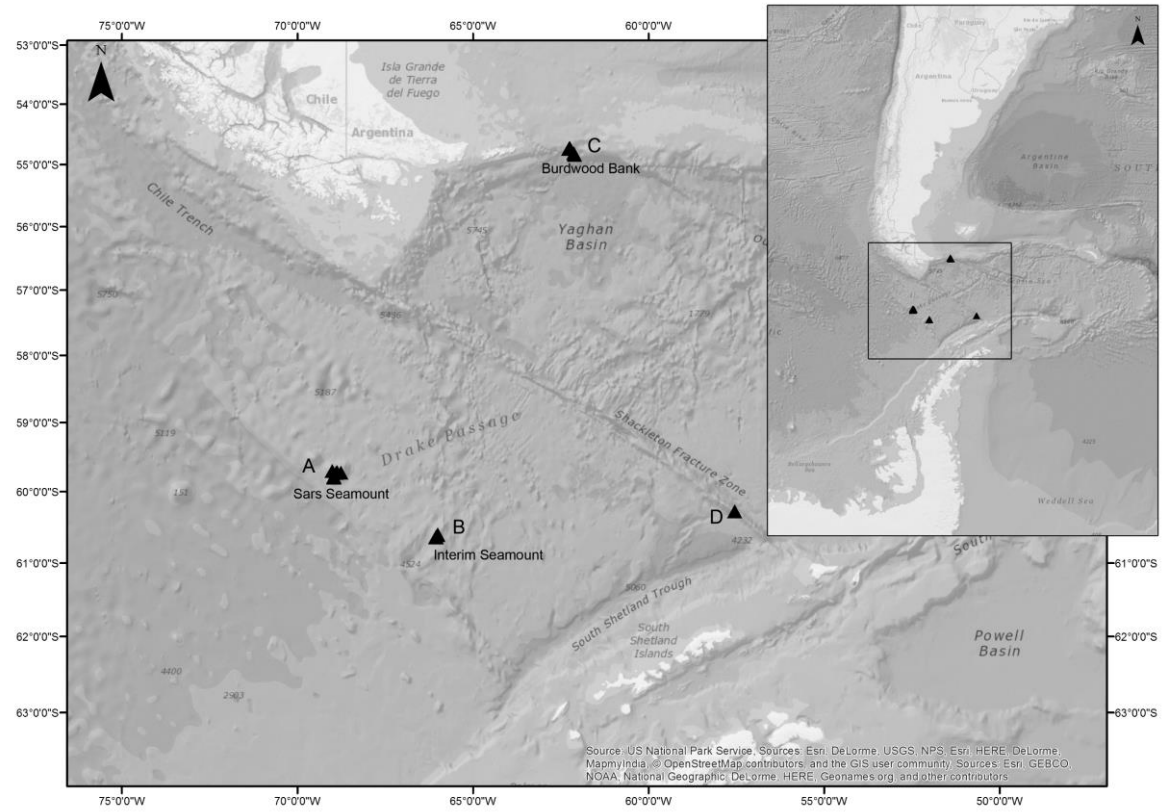
## University of Bristol - Explore Bristol Research

### General rights

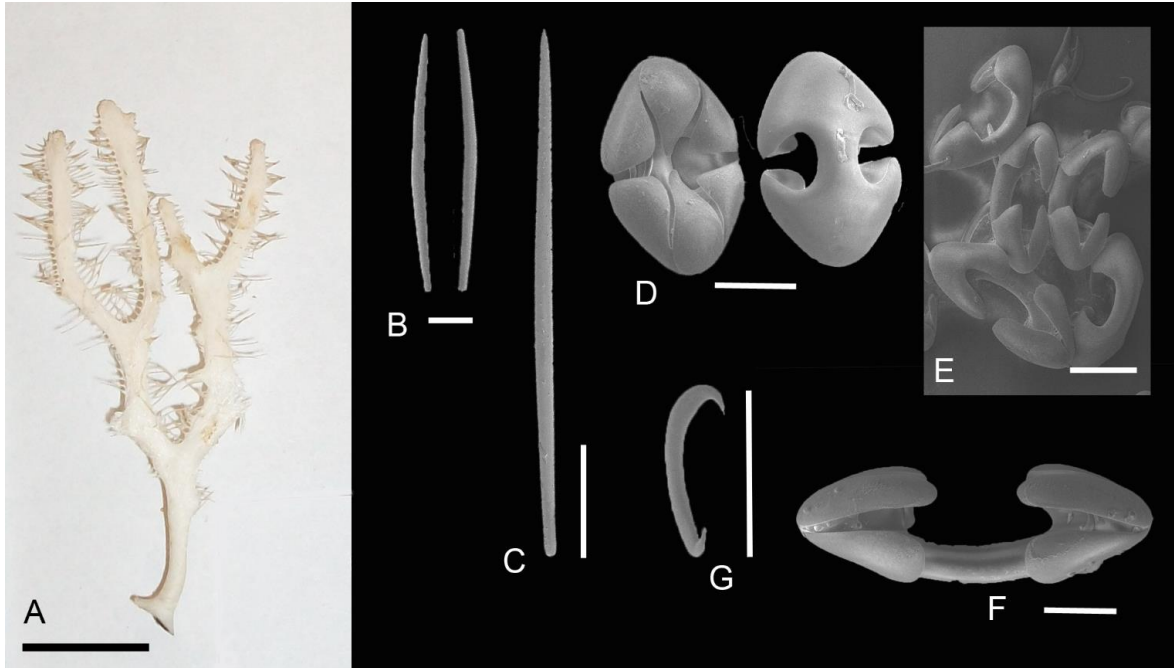
This document is made available in accordance with publisher policies. Please cite only the published version using the reference above. Full terms of use are available: <http://www.bristol.ac.uk/pure/about/ebr-terms.html>

## Figure Captions

**Fig. 1.** Location of sampling sites. A. Sars Seamount, B. Interim Seamount, C. Burdwood Bank and D. Shackleton Fracture Zone. Inset: box indicates the area shown in the main figure.

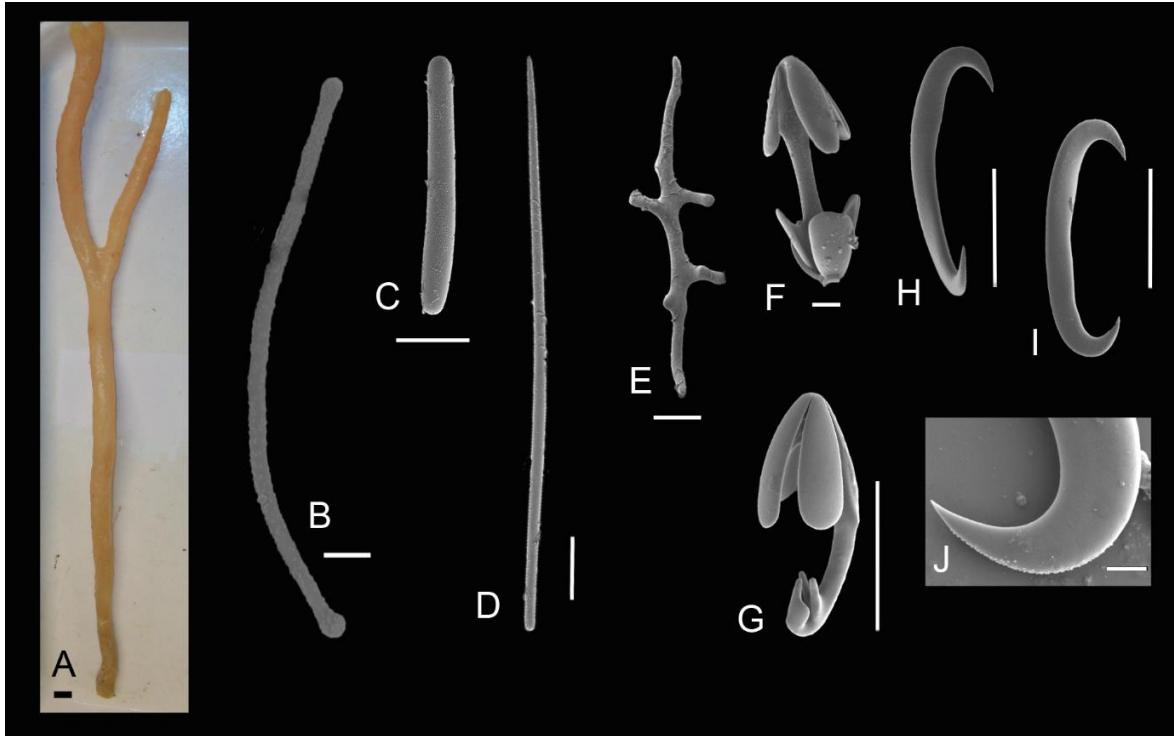


**Fig. 2.** *Abyssocladia leverhulmei* sp. nov. Images of holotype MNHNCL POR-15008. A. Dried specimen, scale 1cm. B. Basal strongyle and style, scale 100  $\mu$ m. C. Style, scale 100  $\mu$ m. D. Abyssochelae, scale 10  $\mu$ m. E. Group of arcuate chelae, scale 10  $\mu$ m. F. Arcuate chelae, scale 10  $\mu$ m. G. Simancistra, scale 10  $\mu$ m.

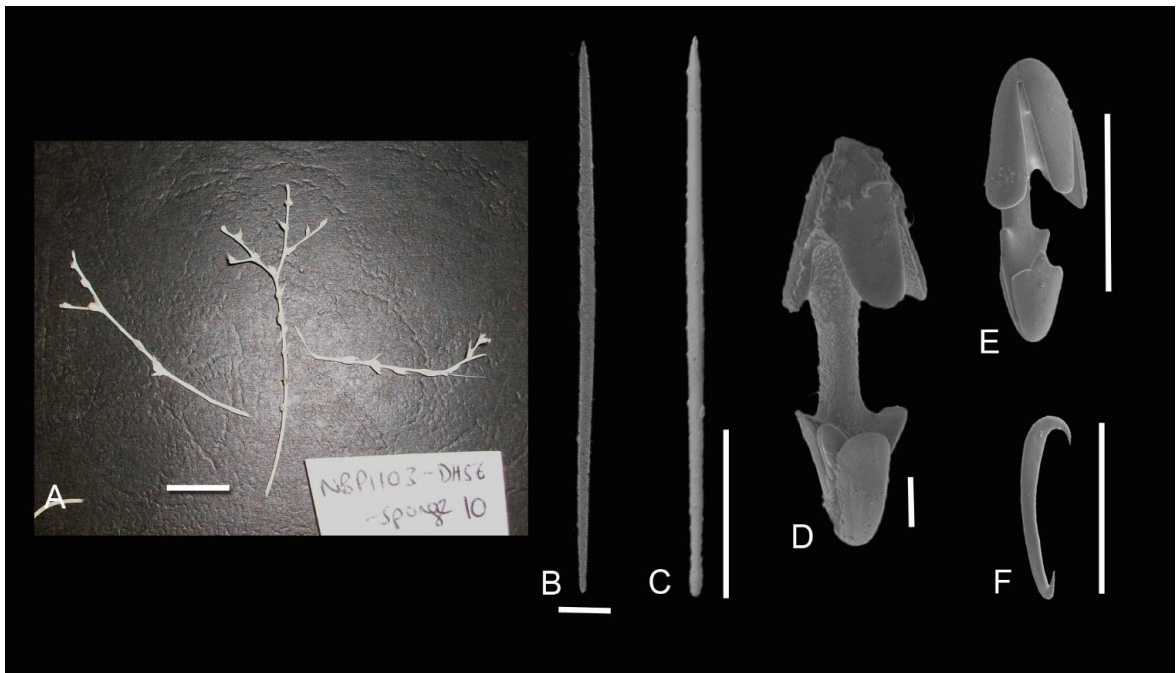


**Fig. 3.** *Asbestopluma* (A.) *bitrichela* Lopes, Bravo & Hajdu, 2011. BELUM.Mc2015.73.

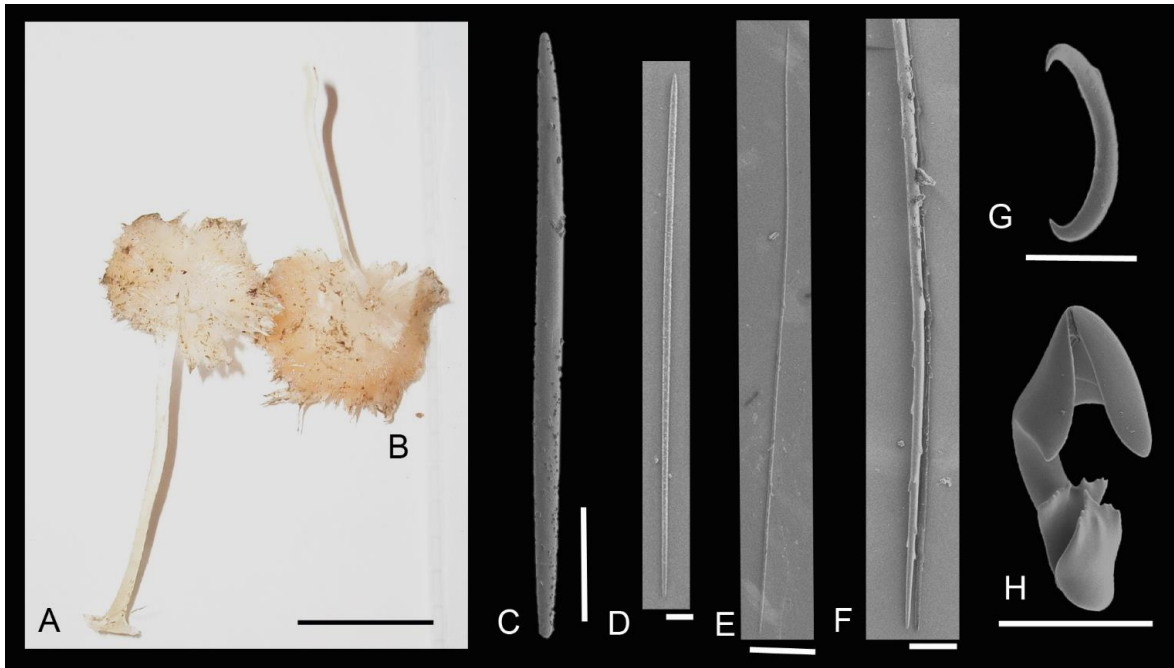
A. Freshly collected specimen, scale 1 cm. B. Acanthotylostrongyle, scale 10  $\mu$ m. C. Strongyle, scale 100  $\mu$ m. D. Style, scale 100  $\mu$ m. E. Desma, scale 100  $\mu$ m. F. Chelae, scale 10  $\mu$ m. G. Chelae, scale 10  $\mu$ m. H. Sigmancistra, scale 10  $\mu$ m. I. Sigma, scale 10  $\mu$ m. J. Sigma end, scale 1  $\mu$ m.



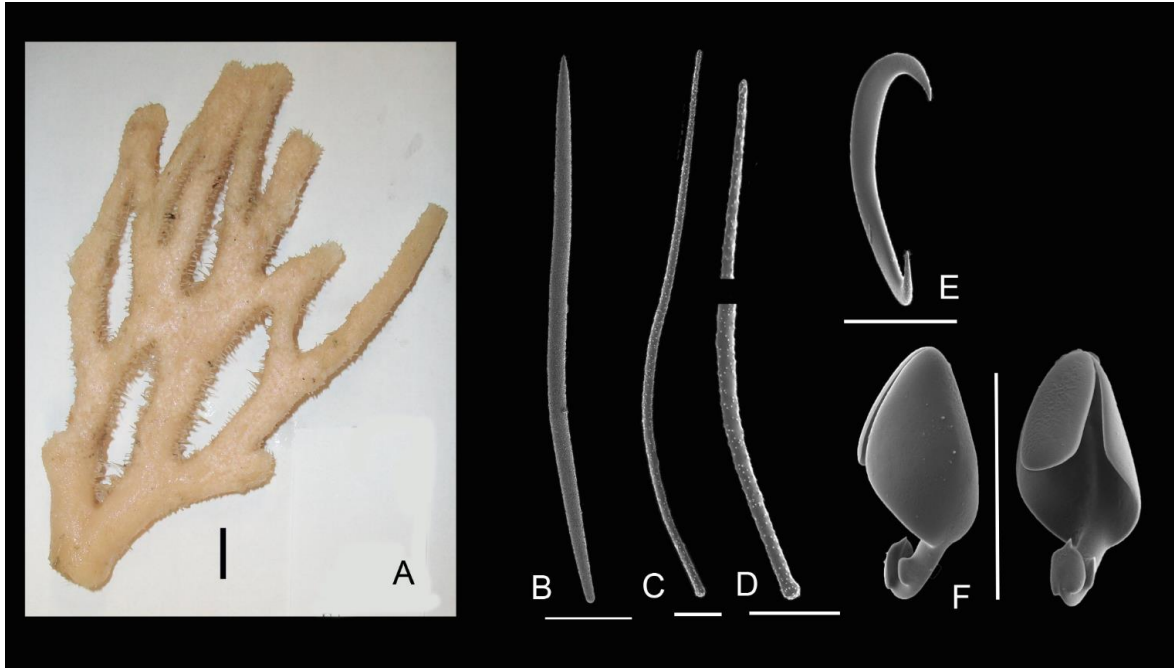
**Fig. 4.** *Asbestopluma gemmae* sp. nov. Holotype MNHNCL POR-15005. A. External appearance dried specimen, scale 1cm. B. Style, scale 100  $\mu$ m. C. Style, scale 100  $\mu$ m. D. Large chelae, scale 10  $\mu$ m. E. Small chelae, scale 10  $\mu$ m, Sigma, scale 10  $\mu$ m.



**Fig. 5.** *Asbestopluma* (A.) *rhapsidiophorus* sp. nov. Appearance freshly collected specimens, A. paratype (MNHNCL POR–15007), B. holotype (MNHNCL POR–15011), scale bar 1cm. Spicules from holotype (MNHNCL POR–15011). C. Style, scale 100  $\mu$ m. D. Style, scale 100  $\mu$ m. E. rhabdite, scale 100  $\mu$ m, F. rhabdite end, scale 10  $\mu$ m, G. Sigma, scale 10  $\mu$ m, H. chelae, scale 10  $\mu$ m.

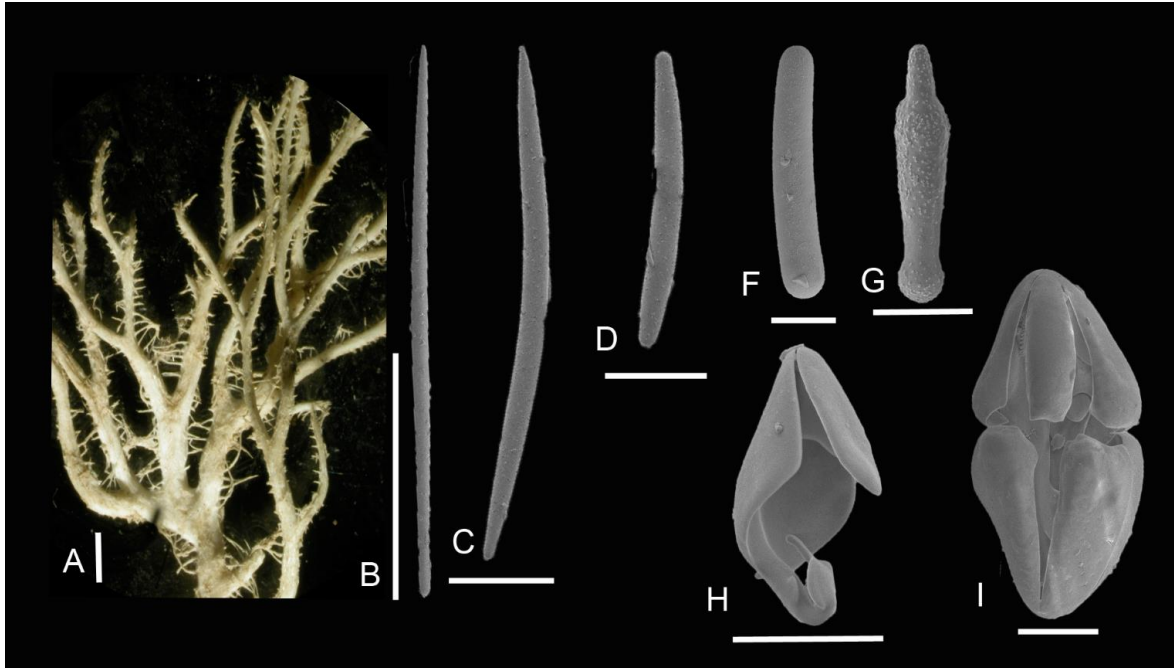


**Fig. 6.** *Asbestopluma* (A.) *sarsensis* sp. nov. Holotype MNHNCL POR-15012. A. Freshly collected specimen (scale 1cm). B. Style, scale 100  $\mu$ m. C. Basal acanthotylostronglye, scale 10  $\mu$ m, D. Acanthotylostronglye ends, scale 10  $\mu$ m. E. Sigma, scale 10  $\mu$ m. F. Chelae, scale 10  $\mu$ m.



**Fig. 7.** *Asbestopluma (Helophloeina) keraia* sp. nov. Holotype MNHNCL POR-15009.

A. Freshly collected appearance, scale 2mm. B. Style, scale 100  $\mu$ m, C. Style, scale 100  $\mu$ m. D. Strongyle, scale 100  $\mu$ m, E. Microstrongyle, scale 10  $\mu$ m. F. Spear, scale 10  $\mu$ m, H. Small Chelae, scale 5  $\mu$ m, I. Chelae, scale 10  $\mu$ m.

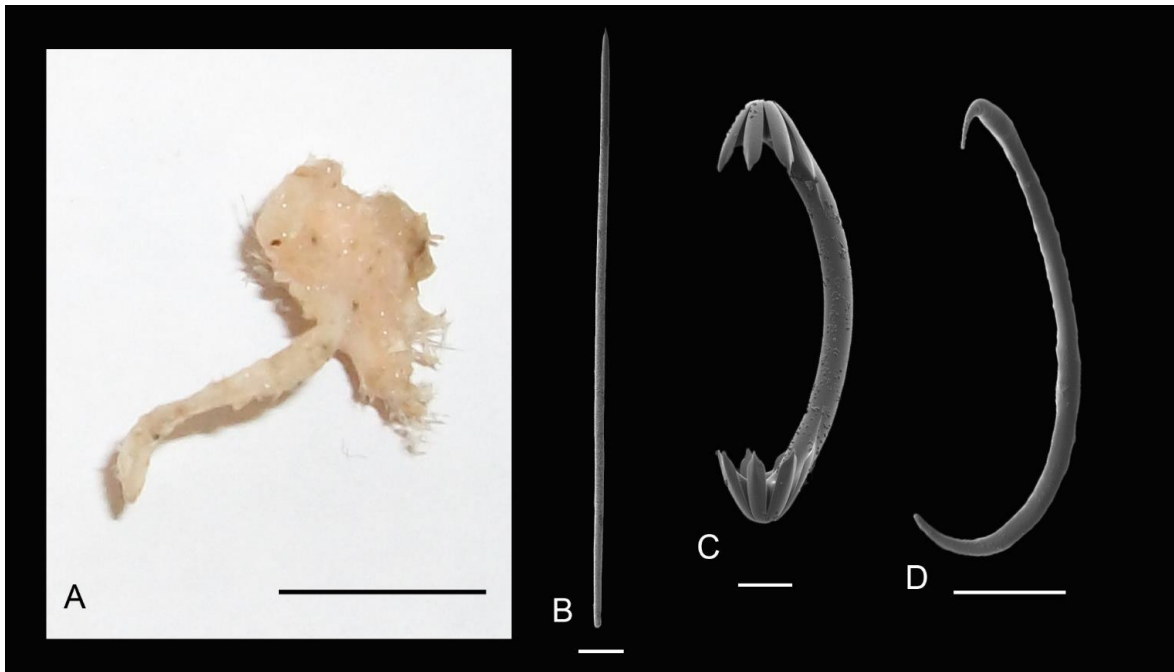




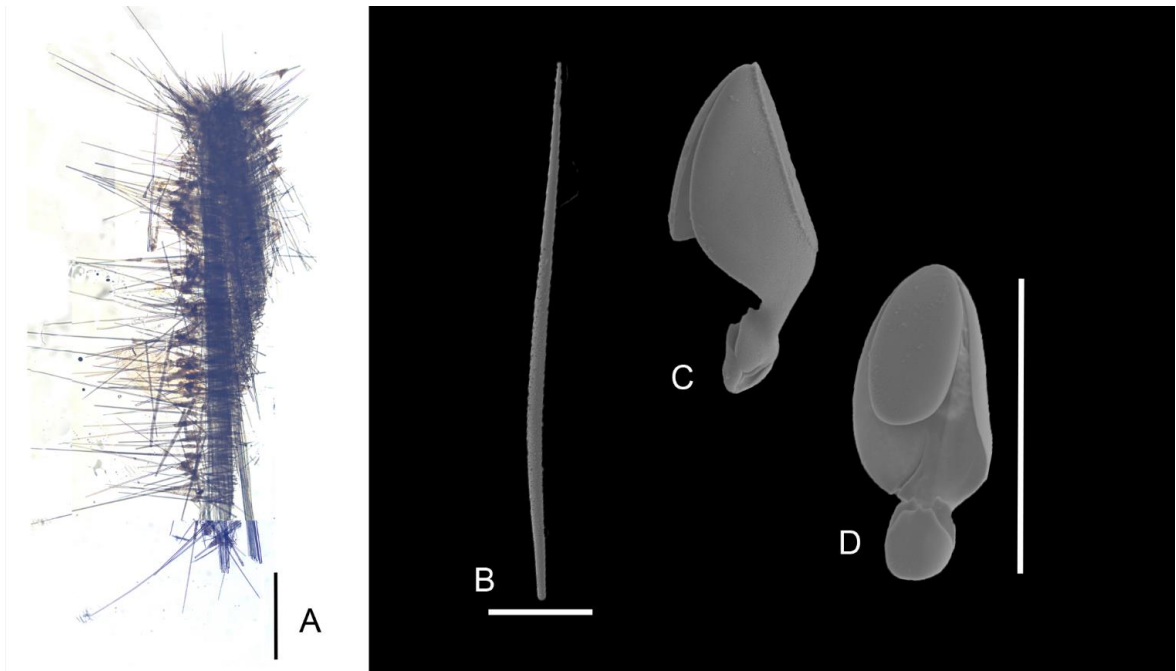
**Fig. 8.** *Cladorhizida scanlonae* sp. nov. Holotype MNHNCL POR-15017. A. Freshly collected specimen, scale 1cm. B. Chelae, scale 10  $\mu$ m. C. Style, scale 100  $\mu$ m.



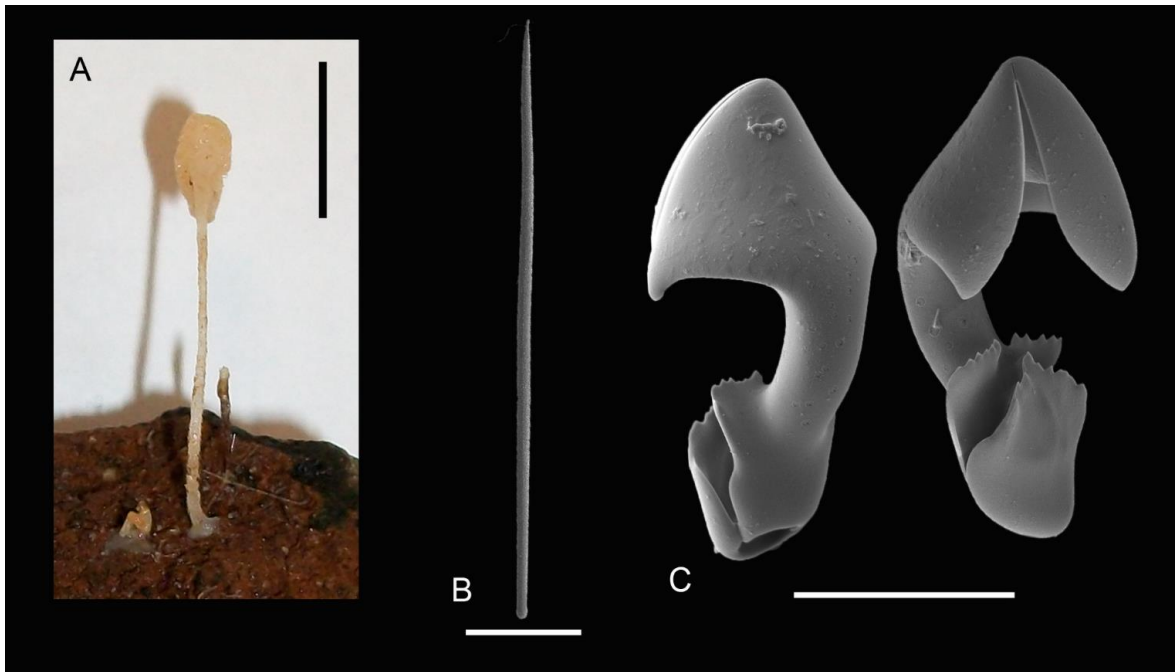
**Fig. 9.** *Chondrocladia* (*Ch.*) *saffronae* sp. nov. Holotype MNHNCL POR-15013. A. Freshly collected specimen, scale 1 cm. B. Chelae, scale 10  $\mu$ m. C. Style, scale 100  $\mu$ m.



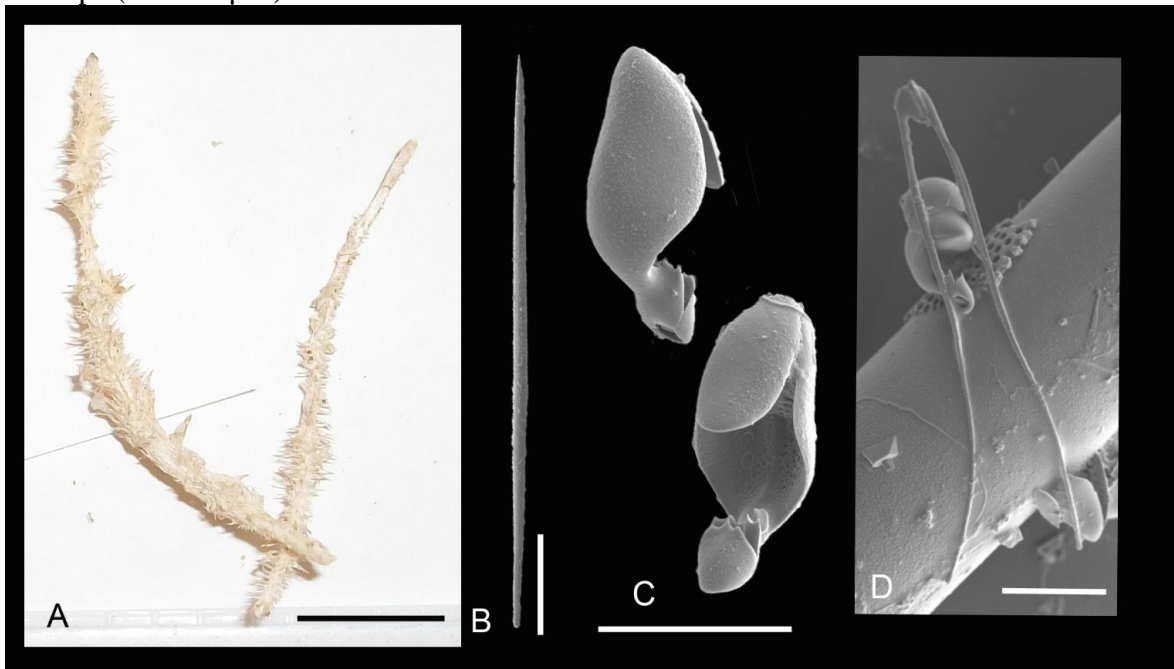
**Fig. 10.** *Lycopodina callithrix* (Hentschel, 1914). Specimen BELUM.Mc2015.210. A. Specimen as viewed on slide (from composite microscope image), scale 1000  $\mu\text{m}$ . B. Style, scale 100  $\mu\text{m}$ . C, D. Chelae, scale 10  $\mu\text{m}$ .



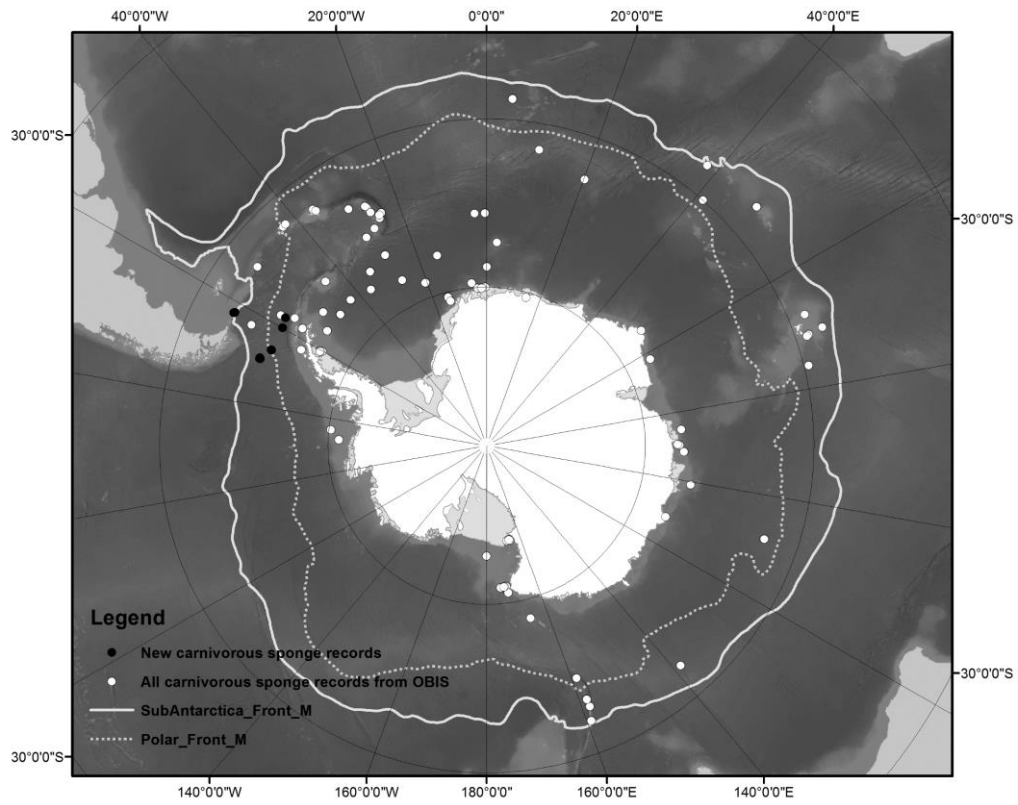
**Fig. 11.** *Lycopodina calyx* (Hentschel, 1914). Specimen BELUM.Mc2015.288. A. Freshly collected specimen, scale 1cm. B. Style, scale 100  $\mu$ m. C. Chelae, scale 10  $\mu$ m.



**Fig. 12.** *Lycopodina drakensis* sp nov. Holotype MNHNCL POR-15006. A. Freshly collected specimen (scale 1cm), B. Style (scale 100 $\mu$ m), C. Chelae (scale 10 $\mu$ m), D. Forceps (scale 10 $\mu$ m).



**Fig. 13.** Carnivorous sponge specimens from the Southern Ocean (records from OBIS, 2016).



**Fig. 14.** Number of carnivorous sponge specimens recorded from the Southern Ocean between 1866 and 2016 (records from OBIS, 2016).

