



Pan, Y., Wan, J., Liu, Y., Yang, Q., Liang, W., Singhal, P. C., ... Ding, G. (2014). sPLA2 IB induces human podocyte apoptosis via the M-type phospholipase A2 receptor. *Scientific Reports*, 4, [6660]. DOI: 10.1038/srep06660

Publisher's PDF, also known as Version of record

License (if available):  
CC BY

Link to published version (if available):  
[10.1038/srep06660](https://doi.org/10.1038/srep06660)

[Link to publication record in Explore Bristol Research](#)  
PDF-document

This is the final published version of the article (version of record). It first appeared online via Nature at <https://www.nature.com/articles/srep06660>. Please refer to any applicable terms of use of the publisher.

## University of Bristol - Explore Bristol Research

### General rights

This document is made available in accordance with publisher policies. Please cite only the published version using the reference above. Full terms of use are available:  
<http://www.bristol.ac.uk/pure/about/ebr-terms.html>

## Supplementary data

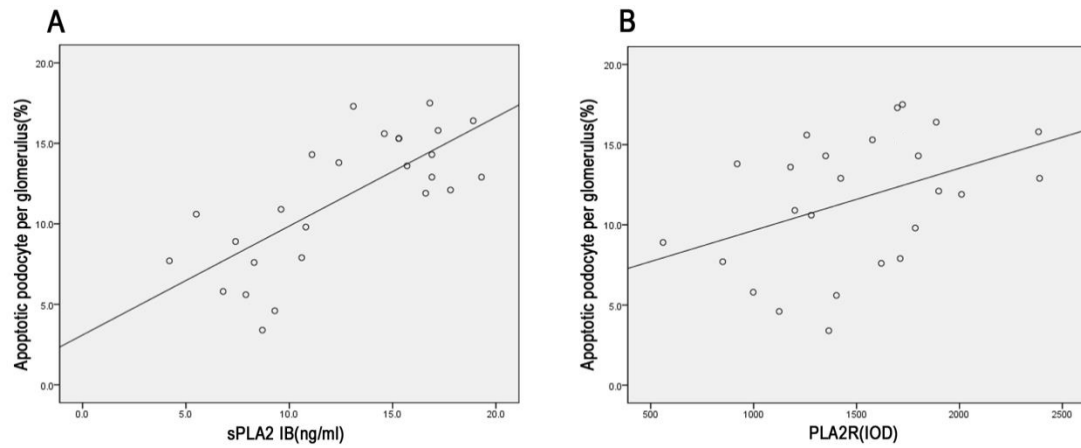
*of*

### **sPLA2 IB induces human podocyte apoptosis via the M-type phospholipase A2 receptor**

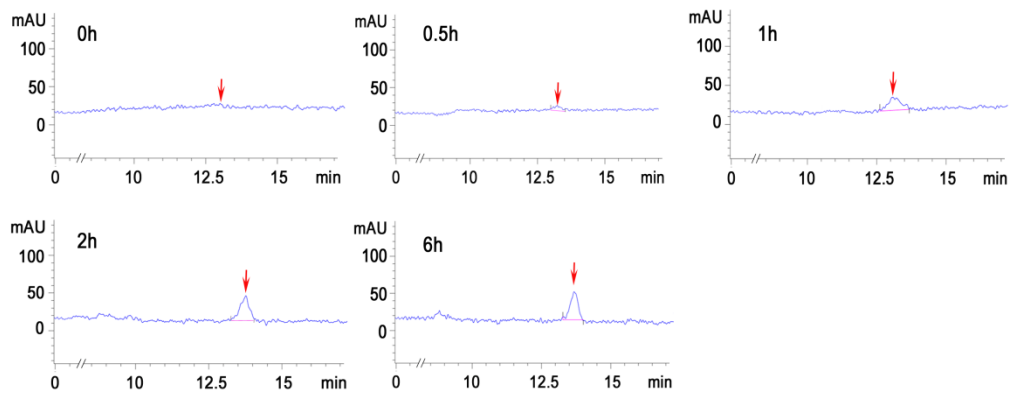
Yangbin Pan<sup>1</sup>, Jianxin Wan<sup>2</sup>, Yipeng Liu<sup>1</sup>, Qian Yang<sup>1</sup>, Wei Liang<sup>1</sup>, Pravin C. Singhal<sup>3</sup>, Moin A. Saleem<sup>4</sup> and Guohua Ding<sup>1</sup>

<sup>1</sup>Division of Nephrology, Renmin Hospital of Wuhan University, Wuhan, Hubei, China; <sup>2</sup>Division of Nephrology, First Affiliated Hospital of Fujian Medical University, Fuzhou, Fujian, China, <sup>3</sup>Department of Medicine, Long Island Jewish Medical Center, New Hyde Park, New York, NY, USA, and <sup>4</sup>Children's Renal Unit and Academic Renal Unit, University of Bristol, Southmead Hospital, Bristol, UK

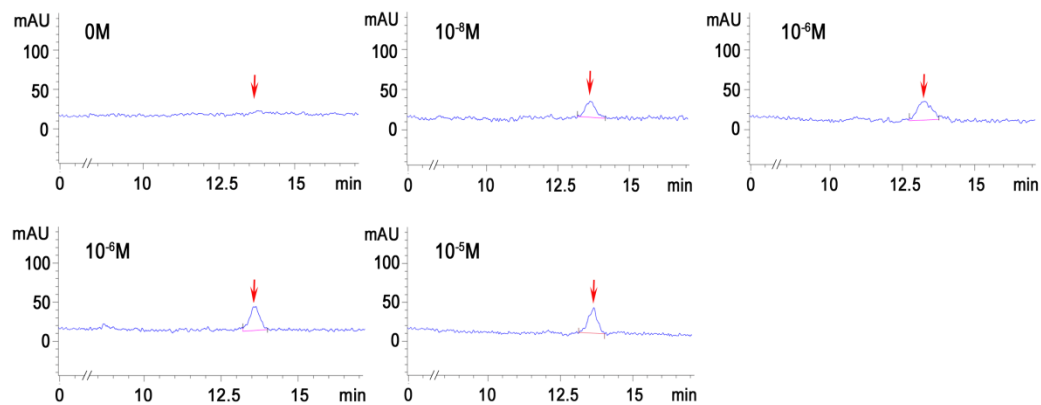
Correspondence and requests for materials should be addressed to Guohua Ding (ghxding@gmail.com)



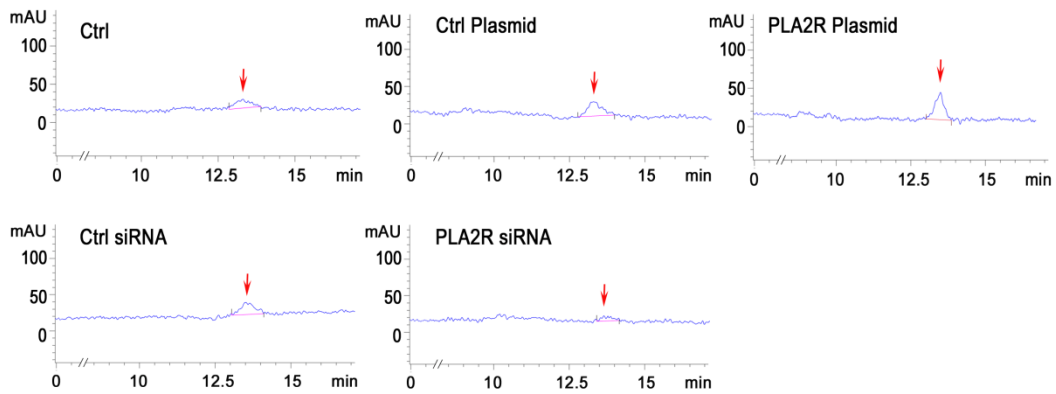
**Figure S1** | The relationship between podocyte apoptosis and serum sPLA2 IB (or PLA2R expression in kidneys) of IMN patients. A. Correlation analysis between sPLA2 IB level and podocyte apoptosis( $r=0.736$ ,  $P < 0.01$ ). B. Correlation analysis between PLA2R IOD and podocyte apoptosis( $r=0.418$ ,  $P < 0.05$ ).



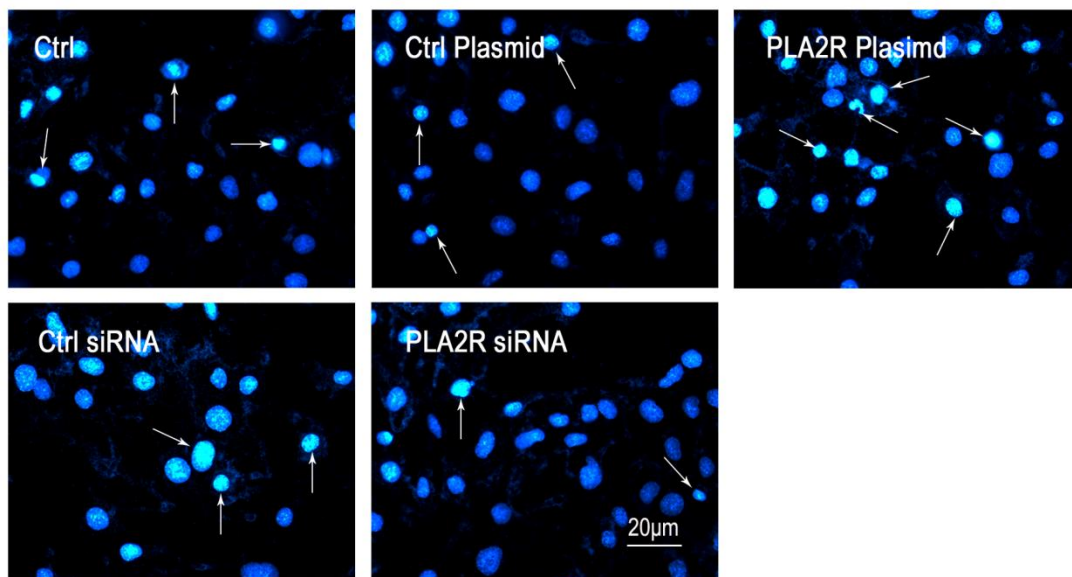
**Figure S2** | Representative results of HPLC for podocyte AA production at different time points. All of the groups were treated with a  $10^{-6}$  M concentration of sPLA2 IB.



**Figure S3** | Representative results of HPLC for podocyte AA production at different concentrations of sPLA2 IB. All of the groups were treated with sPLA2 IB for 2 h.



**Figure S4** | Representative results of HPLC for podocyte AA production in cultured podocyte stimulated with  $10^{-6}$  M sPLA2 IB for 2 h and treated with no plasmid, scrambled plasmid, PLA2R plasmid, scrambled siRNA or PLA2R siRNA.



**Figure S5** | Effects of the PLA2R plasmid and PLA2R siRNA on sPLA2 IB-induced podocyte apoptosis. Representative Hoechst-33342 staining of apoptotic podocytes stimulated by  $10^{-6}$  M sPLA2 IB for 2 h and treated with no plasmid, scrambled plasmid, PLA2R plasmid, scrambled siRNA or PLA2R siRNA (original magnification  $\times 400$ ).