

Pattern changes in determinants of Chinese emissions

This content has been downloaded from IOPscience. Please scroll down to see the full text.

Download details:

IP Address: 139.222.81.130

This content was downloaded on 03/05/2017 at 15:20

Manuscript version: Accepted Manuscript

Mi et al

To cite this article before publication: Mi et al, 2017, Environ. Res. Lett., at press:

<https://doi.org/10.1088/1748-9326/aa69cf>

This Accepted Manuscript is: ©2017 IOP Publishing Ltd

As the Version of Record of this article is going to be / has been published on a gold open access basis under a CC BY 3.0 licence, this Accepted Manuscript is available for reuse under a CC BY 3.0 licence immediately.

Everyone is permitted to use all or part of the original content in this article, provided that they adhere to all the terms of the licence <https://creativecommons.org/licences/by/3.0>

Although reasonable endeavours have been taken to obtain all necessary permissions from third parties to include their copyrighted content within this article, their full citation and copyright line may not be present in this Accepted Manuscript version. Before using any content from this article, please refer to the Version of Record on IOPscience once published for full citation and copyright details, as permissions will likely be required. All third party content is fully copyright protected, unless specifically stated otherwise in the figure caption in the Version of Record.

When available, you can view the Version of Record for this article at:

<http://iopscience.iop.org/article/10.1088/1748-9326/aa69cf>

Pattern changes in determinants of Chinese emissions

Zhifu Mi¹, Jing Meng³, Dabo Guan^{1,2}, Yuli Shan¹, Zhu Liu⁴, Yutao Wang⁵, Kuishuang Feng⁶, Yi-Ming Wei^{2,7}

¹ Tyndall Centre for Climate Change Research, School of International Development, University of East Anglia, Norwich NR4 7TJ, UK

² Center for Energy and Environmental Policy Research, Beijing Institute of Technology, Beijing 100081, China

³ School of Environmental Sciences, University of East Anglia, Norwich NR4 7TJ, UK

⁴ Applied Physics and Materials Science, California Institute of Technology Resnick Sustainability Institute, Pasadena CA 91125, USA

⁵ Department of Environmental Science and Engineering, Fudan University, Shanghai 200433, China

⁶ Department of Geographical Sciences, University of Maryland, College Park, Maryland 20742, USA

⁷ School of Management and Economics, Beijing Institute of Technology, Beijing 100081, China

E-mail: dabo.guan@uea.ac.uk

Abstract: Chinese economy has been recovering slowly from the global financial crisis, but it cannot achieve the same rapid development of the pre-recession period. Instead, the country has entered a new phase of economic development – a “new normal”. We use a structural decomposition analysis (SDA) and environmental input-output analysis (IOA) to estimate the determinants of China’s carbon emission changes during 2005-2012. China’s imports are linked to a global multi-regional input-output (MRIO) model based on the Global Trade and Analysis Project (GTAP) database to calculate the embodied CO₂ emissions in imports. We find that the global

1
2
3
4 financial crisis has affected the drivers of China's carbon emissions growth. From
5
6
7 2007 to 2010, the CO₂ emissions induced by China's exports dropped, whereas
8
9 emissions induced by capital formation grew rapidly. In the "new normal", the
10
11 strongest factors that offset CO₂ emissions have shifted from efficiency gains to
12
13 structural upgrading. Efficiency was the strongest factor offsetting China's CO₂
14
15 emissions before 2010 but drove a 1.4% increase in emissions in the period
16
17 2010-2012. By contrast, production structure and consumption patterns caused a 2.6%
18
19 and 1.3% decrease, respectively, in China's carbon emissions from 2010 to 2012. In
20
21 addition, China tends to shift gradually from an investment to a consumption-driven
22
23 economy. The proportion of CO₂ emissions induced by consumption had a declining
24
25 trend before 2010 but grew from 28.6% to 29.1% during 2010-2012.
26
27
28
29
30
31
32

33 **Keywords:** CO₂ emissions, financial crisis, new normal, input-output analysis,
34
35 structural decomposition analysis
36
37
38
39
40
41
42

43 **1. Introduction**

44
45 China's rapid economic growth has simultaneously brought wealth to its people and
46
47 generated significant greenhouse gas (GHG) emissions (Davis and Socolow 2014, Mi
48
49 et al 2015, Zhang et al 2016). China's average annual Gross Domestic Product (GDP)
50
51 growth rate was approximately 10% over the period 1978-2007 (National Bureau of
52
53 Statistics 2015b). Meanwhile, China's CO₂ emissions also rose sharply over the same
54
55 period, with China surpassing the United States in 2006 as the largest CO₂ emitter in
56
57 the world (Davis et al 2013, Wei et al 2015, Zhang et al 2017). However, China's
58
59
60

1
2
3
4 high-speed economic growth was severely damaged by the global financial crisis of
5
6
7 2008. China's GDP growth rate dropped to 6.9% in 2015, and this downward trend
8
9 will likely continue. China's exports and imports were both seriously affected with net
10
11 exports declining by 38% from 2008 to 2009 (Davis and Diffenbaugh 2016, National
12
13 Bureau of Statistics 2015b).
14
15
16
17
18
19

20 As a means of minimizing the impacts of the global financial crisis, the Chinese
21
22 government created a Chinese economic stimulus plan, which included a four trillion
23
24 Yuan (approximately USD 586 billion) stimulus package. The plan mainly focused on
25
26 fixed assets and construction, such as high-speed rail network, rural infrastructure,
27
28 urban electrical grid and post-quake reconstruction. The four trillion Yuan stimulus
29
30 package has helped reduce the impacts of the crisis. Although the Chinese economy
31
32 has been recovering slowly, it cannot continue the rapid development before the
33
34 recession. The country has entered a new phase of economic development – a “new
35
36 normal”. China is striving to promote economic growth while driving down CO₂
37
38 emissions by changing economic structures, improving efficiency levels, and cleaning
39
40 up energy mix (Green and Stern 2015). In this study, we use the most recent official
41
42 Chinese energy data and economic input-output tables to estimate the determinants of
43
44 CO₂ emission changes in China during 2005-2012, with a particular focus on the
45
46 effects of global financial crisis and pattern changes in the “new normal”.
47
48
49
50
51
52
53
54
55
56
57
58
59
60

A structural decomposition analysis (SDA) (Leontief and Ford 1972, Rose and Casler

1
2
3
4 1996) is used to extend the Impact = Population \times Affluence \times Technology (IPAT)
5
6
7 model (Ehrlich and Holdren 1971, Wan et al 2016) to estimate the key drivers of
8
9
10 China's CO₂ emission changes from 2005 to 2012. The SDA approach has been
11
12 widely used to assess the driving forces of CO₂ emissions growth at global level (Arto
13
14 and Dietzenbacher 2014, Malik et al 2016, Xu and Dietzenbacher 2014) and provide
15
16 national analyses to the United States (Feng et al 2015, Kotchen and Mansur 2016),
17
18 the United Kingdom (Baiocchi and Minx 2010), Norway (Yamakawa and Peters
19
20 2011), and Australia (Wood 2009). A few studies focused on China. For example,
21
22 Xiao et al. (2016) and Chang and Lahr (2016) used SDA approach to identify the key
23
24 factors that affected CO₂ emissions in China for the time periods 1997-2010 and
25
26 2005-2010, respectively. The key findings of these two studies were that efficiency
27
28 helped to reduce emissions, while capital investment explained the majority of the
29
30 increases in CO₂ emissions brought about by final demand. Some studies which
31
32 focused on the time periods prior to the global financial crisis showed the great
33
34 contribution of export to China's CO₂ emission growth. For example, Minx et al.
35
36 (2011) found that export final demands have grown most rapidly compared to all
37
38 other final demands for 1992-2007 (225% increase). CO₂ emissions embodied in
39
40 export increased from 408 Mt in 1992 to 1732 Mt in 2007. Guan et al. (2009)
41
42 indicated that Chinese export production was responsible for one-half of the emission
43
44 increases from 2002 to 2005.

45
46
47
48
49
50
51
52
53
54
55
56
57
58
59
60 The paper contributes a more recent dataset - the latest published energy and emission

1
2
3
4 data and input-output table, which allows us exploring new drivers of emission
5
6
7 changes during recessions and recent changes in the development pattern in China.
8
9
10 The SDA method is a well-developed and robust approach extensively used in earlier
11
12 studies.
13
14
15
16
17

18 **2. Method and data**

21 **2.1 Environmental input-output analysis and structural decomposition analysis**

22
23
24 The environmental input-output analysis (IOA) method is an established life cycle
25
26 assessment (LCA) and carbon emissions analysis approach (Meng et al 2015, Mi et al
27
28 2017a, Mi et al 2017b). It can be mathematically expressed as follows:
29
30

$$31 \quad C = F(I - A)^{-1}y, \quad (1)$$

32
33 where $(I - A)^{-1}$ is the Leontief inverse matrix, C are the total CO₂ emissions, F
34
35 is a row vector of carbon emissions intensities (CO₂ emissions per unit of economic
36
37 output) for each economic sector, I is the identity matrix, A is a matrix denoting
38
39 the monetary relationship between different sectors of the economy, and y is a
40
41 column vector of final demand for each economic sector (Zhang et al 2015).
42
43
44
45
46
47
48
49

50
51 A country's CO₂ emissions change over time for various reasons. Five factors
52
53 (population, efficiency, production structure, consumption patterns and consumption
54
55 volume) are considered to assess changes in China's CO₂ emissions via an SDA,
56
57 which is represented as follows:
58
59
60

$$\Delta C = \Delta pFLy_s y_v + p\Delta FLy_s y_v + pF\Delta Ly_s y_v + pFL\Delta y_s y_v + pFLy_s \Delta y_v, \quad (2)$$

1
2
3
4 where

5
6 Δ : the change in a factor;

7
8 p : a scalar that represents the population;

9
10 F : a row vector that represents carbon emissions intensities;

11
12 L : the Leontief inverse matrix, $L = (I - A)^{-1}$;

13
14 y_s : a column vector that represents per capita consumption patterns; and

15
16 y_v : a scalar that represents the per capita consumption volume.
17
18
19
20
21
22
23
24

25 Each of five terms in Equation 2 denotes the contributions to CO₂ emissions changes
26 that are triggered by one driving force if the rest of the variables are kept constant.
27

28 When conducting an SDA, evaluating different terms for the start or end point of the
29 investigated time period is possible. There are several methods for dealing with this
30 issue. For example, Su and Ang (2012) summarized four SDA methods and pointed
31 out their pros and cons. In this study, we take the average of all possible first-order
32 decompositions to address this issue. Five factors are considered in this paper, so there
33 are 5!=120 forms. For a detailed discussion, see Dietzenbacher and Los (1998) and
34 Hoekstra and Van der Bergh (2002).
35
36
37
38
39
40
41
42
43
44
45
46
47
48
49
50
51

52 **2.2 CO₂ emission inventory construction**

53
54 Based on our previous studies (Mi et al 2017b, Mi et al 2016, Shan et al 2016a, Shan
55 et al 2016b), we adopted the Intergovernmental Panel on Climate Change (IPCC)
56 administrative territorial CO₂ emissions inventories for China's emission accounting
57
58
59
60

in this study. The inventories compiled in this study include two parts: emissions from fossil fuel combustion and from cement production. For CO₂ emissions from fossil fuel, we calculate the emissions by (IPCC 2006, Liang et al 2016):

$$C_{fossil} = D_{fossil} \times N \times H \times O, \quad (3)$$

where C_{fossil} are the CO₂ emissions from fossil fuel, D_{fossil} is the fossil fuel consumption (in physical unit), N is the net calorific value that represents heat released when unit fossil fuel is combusting, H is the carbon content that represents CO₂ emit when unit heat is released, and O is the oxygenation that represents oxidization rate of fossil fuel combustion. $N \times H \times O$ is defined as emission factors. See Table S1 in support information for all emission factors for fuel combustion.

To avoid missing or double accounting, we calculate the fossil fuel consumption by (Peters et al 2006):

$$D_{fossil} = \text{Final consumption} - \text{Used as chemical material} - \text{Loss} + \text{Input for thermal power} + \text{Input for heating} \quad (4)$$

The CO₂ emissions from cement production are calculated by (IPCC 2006):

$$C_{cement} = D_{cement} \times E, \quad (5)$$

where C_{cement} are the CO₂ emissions from cement production, D_{cement} is the cement production amount, E is the emission factor of cement production that represents CO₂ emit when producing unit cement. The emission factor for cement process is 0.2906 tonne CO₂ per tonne cement produced (Liu et al 2015).

2.3 Linking China's imports to global multi-regional input-output model

Due to the differences in technology, the carbon intensity of China's imports is different from that of its domestic products. Many previous studies assumed that the imports to China were produced with Chinese technology (Guan et al 2008). This approach may cause large errors in estimating the emissions embodied in imports (Meng et al 2016). In this paper, we link China's imports to a global multi-regional input-output (MRIO) model which are based on the Global Trade and Analysis Project (GTAP) database. China's imports in each sector are divided into all other regions of the world according to the GTAP database. The CO₂ emissions embodied in imports are calculated using the global MRIO model:

$$C_{import} = \bar{F}(I - \bar{A})^{-1} y_{import}, \quad (6)$$

where C_{import} are the embodied CO₂ emissions in imports, \bar{F} is a row vector of carbon emissions intensities for all sectors in all regions, \bar{A} is the direct requirement matrix for the global MRIO model, y_{import} is a column vector of China's imports from all sectors in all regions.

Several recent studies analyzed supply chain relationships in the export processing sectors which can substantially affect the emissions attributed to exports. The processing exports which generate relatively little value added but also relatively little emissions account for a large proportion of China's total exports. Therefore, the CO₂ emissions embodied in China's exports are likely to be overestimated if export processing is not taken into consideration (Dietzenbacher et al 2012).

2.4 Data Sources

Two main datasets were examined in this study: time-series input-output (IO) tables and corresponding CO₂ emissions data. China IO tables for 2005, 2007, 2010, and 2012 were published by the National Bureau of Statistics (NBS) of China and can be freely downloaded from the NBS website (National Bureau of Statistics 2016). NBS regularly publishes China's national input-output tables based on national surveys every 5 years. In this study, 2007 and 2012 IO tables are the surveyed ones. In between the 5 year period, NBS updates extend-tables to reflect new changes in economic production and consumption based on economic upscaling and balancing methods. The adopted 2005 and 2010 IO tables by this study are the extended version. The production structure changes in extended IO tables cannot be fully represented, but these tables capture essential interdependences among different economic sectors.

We deflated all the tables to 2012 prices using the double deflation method (UNSD 1999). The pricing data for China's IO tables were gotten from the China Statistics Yearbook (National Bureau of Statistics 2007, 2011, 2015b), while the pricing data for China's imports and global MRIO tables were obtained from the National Account Main Aggregates Database (UNSD 2016). In addition, the import value of China was deflated by the weighted average price deflators of all regions (excluding China). The weight for one region was in proportion to China's imports from the region. It needs to be noted that there are several drawbacks related to double deflation method,

1
2
3
4 although this method is widely accepted. Firstly, by adopting this method, most
5
6 sectors are assumed to produce one homogeneous product, each sector's gross output
7
8 and intermediate and final demand are deflated by this sector's price index
9
10 (Dietzenbacher and Hoen 1998). However, most sectors consist of more than one
11
12 good, therefore to use the price index of certain goods to represent the entire sector is
13
14 not always appropriate (Sevaldson 1976). Secondly, value-added is obtained as the
15
16 difference between the total input and intermediate input in each sector. Consequently,
17
18 it is not accurate to use value-added to balance the input-output table after the
19
20 deflation (Wolff 1994).
21
22
23
24
25
26
27
28
29
30

31 Fossil fuel consumption, cement production and emission factors were necessary to
32
33 compile CO₂ emissions inventories. We used the most recent Chinese energy data
34
35 published in China Energy Statistical Yearbooks 2014 and 2015 (National Bureau of
36
37 Statistics 2014, 2015a). In these recent datasets, there are unusually large adjustments
38
39 on Chinese energy data (EIA 2015). Cement production amount was collected from
40
41 China Statistical Yearbook 2015 (National Bureau of Statistics 2015b). We used
42
43 emission coefficients from our previous studies (Liu et al 2015). The coefficients are
44
45 measured based on 602 coal samples from the 100 largest coal-mining areas in China
46
47 and are assumed to be more accurate than the IPCC default value. All the inventories
48
49 used in this study can be freely downloaded from the website of *China Emission*
50
51 *Accounts and Datasets (CEADs)* (<http://www.ceads.net/>) (Mi et al 2017b, Mi et al
52
53 2016, Shan et al 2016a). China's CO₂ emission inventory for 47 sectors for 2000-2015
54
55
56
57
58
59
60

1
2
3
4 is shown in supporting information. The inventory includes CO₂ emissions from fossil
5
6
7 fuel combustion and cement production.
8
9

10
11
12 Global MRIO tables were obtained based on version 9 of the GTAP database, which
13
14 describes bilateral trade patterns, production, consumption, and intermediate use of
15
16 commodities and services among 140 regions for 57 sectors for the years 2004, 2007
17
18 and 2011 (Dimaranan 2006, Narayanan et al 2015). See Table S2 in support
19
20 information for the concordance of sectors for Chinese IO tables, carbon emission
21
22 inventories and GTAP MRIO tables.
23
24
25
26
27
28
29
30
31

32 **3. Results and discussions**

33 **3.1 Determinants of emissions changes during the global financial crisis**

34
35
36 From 2005 to 2010, Chinese production-based CO₂ emissions increased by 47% from
37
38 5,159 million tonnes (Mt) to 7,604 Mt (Fig. 1, black curve). Clearly, efficiency was a
39
40 strong factor in offsetting emissions during 2005-2010 (Fig. 1, blue curve). The
41
42 efficiency gains offset 39% of emissions by keeping other driving forces constant. In
43
44 fact, Chinese carbon intensity decreased by 10% over this period (Fig. 2a, black
45
46 curve). From a sectoral perspective, carbon intensity in agriculture and industry
47
48 decreased by 24% and 30%, respectively, from 2005 to 2010. See Fig. S1 for changes
49
50 in the carbon intensity levels of all 20 sectors.
51
52
53
54
55
56
57
58
59
60

However, the other four factors drove emissions growth from 2005 to 2010. Per capita

consumption alone drove 36% of emission increases with other factors held constant, and production structural changes increased emissions by 34% compared with 2005 levels (Fig. 1, green). Changing consumption patterns and population growth were relatively weak factors, causing approximately 14% and 4% of emissions increases, respectively.

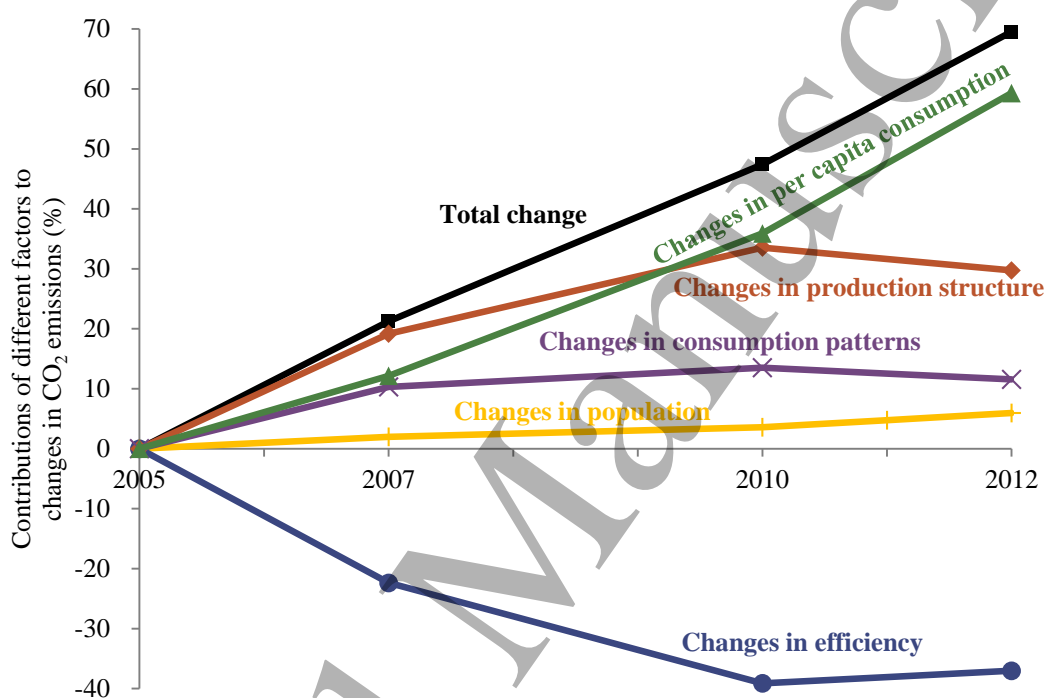


Fig. 1 Contributions of different factors to changes in Chinese CO₂ emissions between 2005 and 2012. Using 2005 as a base year, the black line shows the percentage change in total emissions. The other lines show contributors to emission changes for population (yellow), efficiency (blue), production structure (orange), consumption patterns (purple) and per capita consumption (green).

The global financial crisis had impacts on the determinants of Chinese carbon emissions changes. First, the CO₂ emissions embodied in Chinese exports from 2007 to 2010 dropped (Fig. 3b). Investments, consumption and exports form the triumvirate that supports Chinese economy. China has become a “factory to the world”; thus, exports play a critical role in promoting its economic development. Export-induced

1
2
3
4 CO₂ emissions increased by 214 Mt from 2005 to 2007, which accounted for about 20%
5
6
7 of total emissions growth for that period (Fig. 3a, blue section). However, China's
8
9 exports sharply declined after the global financial crisis. As a result, CO₂ emissions
10
11 induced by exports from 2007 to 2010 declined (Fig. 3b, blue section). Several sectors
12
13 were affected greatly. For instance, CO₂ emissions induced by metal product exports
14
15 fell by 26% from 361 Mt in 2007 to 267 Mt in 2010. CO₂ emissions induced by
16
17 textiles exports also declined by 15% over the same period (Fig. S2). Chinese
18
19 export-induced emissions represented 24% of Chinese CO₂ emissions in 2010,
20
21 decreasing from levels in 2005 (32%) and 2007 (30%) (Fig. 2b, blue bar).
22
23
24
25
26
27
28
29
30

31 On the contrary, Chinese CO₂ emissions induced by capital formation from 2007 to
32
33 2010 grew rapidly mainly due to the government's response to the financial crisis.
34
35 Chinese exports were severely affected by the financial crisis; as such, the
36
37 government increased its investments on capital formation to promote its economic
38
39 growth. The four trillion Yuan stimulus package is mainly focused on fixed assets and
40
41 construction, such as high-speed rail network, rural infrastructure, urban electrical
42
43 grid and post-quake reconstruction. As a result, approximately 71% of the CO₂
44
45 emissions growth from 2007 to 2010 was due to capital formation (Fig. 3b, yellow
46
47 section), which was much higher than those during 2005-2007 (61%) and 2007-2012
48
49 (56%). From sectoral perspective, the CO₂ emissions induced by the capital formation
50
51 in terms of construction rose by 27% from 1,762 Mt in 2007 to 2,246 Mt in 2010. The
52
53 CO₂ emissions induced by the capital formation with respect to transport equipment
54
55
56
57
58
59
60

1
2
3
4 also increased by 86% (156 Mt) during the same period, which was much higher than
5
6 those for 2005-2007 (40 Mt) and 2010-2012 (17 Mt) (Fig. 3). One of the reasons for
7
8 the emission increase in transport equipment is the rapid development of high-speed
9
10 railway. The length in operation of high-speed railway increased by 664% from 672
11
12 km in 2008 to 5,133 km in 2010, and its passenger traffic also grew from 7 million in
13
14 2008 to 133 million in 2010 (National Bureau of Statistics 2015b). The proportion of
15
16 capital formation-induced emissions of the total CO₂ emissions grew from 41% in
17
18 2007 to 48% in 2012. It can be seen from the Fig. 2b that the switch from exports to
19
20 capital formation can be observed through the entire period (2005-2012), but the
21
22 financial crisis made it faster.
23
24
25
26
27
28
29
30
31
32

33 In addition, Chinese direct household CO₂ emissions declined from 2006 to 2008.
34
35 With improvements in Chinese living standards, direct household emissions increased
36
37 before 2006. However, direct household emissions declined by 11% from 302 Mt in
38
39 2006 to 270 Mt in 2008 (Fig. 2c). It was mainly caused by the decreases of household
40
41 oil consumption. Moreover, the direct CO₂ emissions per capita of urban residents
42
43 were greater than those of rural residents in China, but the gap was diminishing. The
44
45 direct CO₂ emissions per capita of urban residents were 42% higher than those of
46
47 rural residents in 2005 and 15% higher in 2012.
48
49
50
51
52
53
54
55
56
57
58
59
60

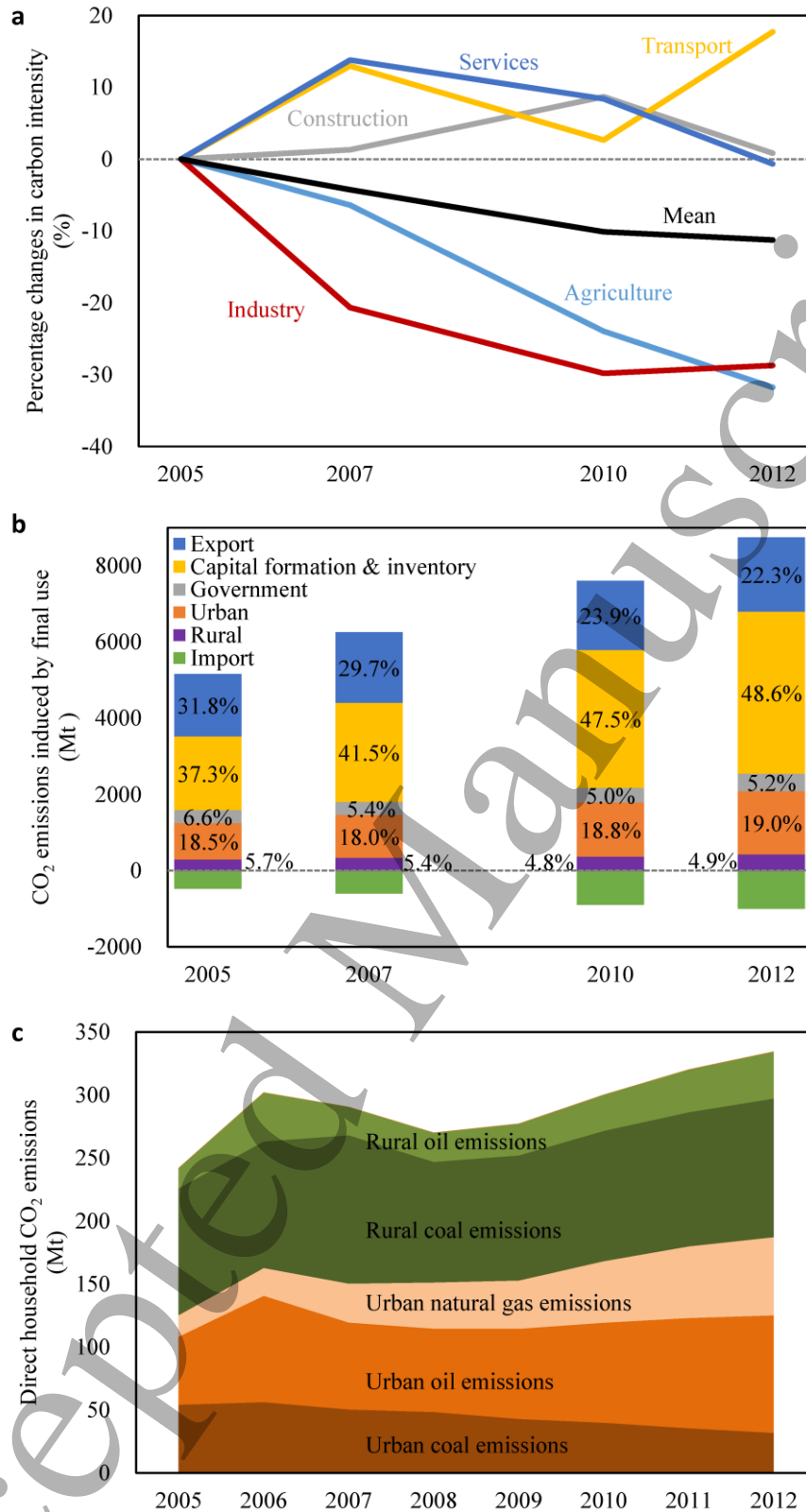


Fig. 2 Trends underlying the decomposed factors from 2005 to 2012. (a) Percentage changes in the carbon intensity levels of key sectors in the Chinese economy. (b) Chinese CO₂ emissions induced by different final uses (rural consumption, urban consumption, government consumption, capital formation, inventory changes and exports). (c) Direct household CO₂ emissions in China.

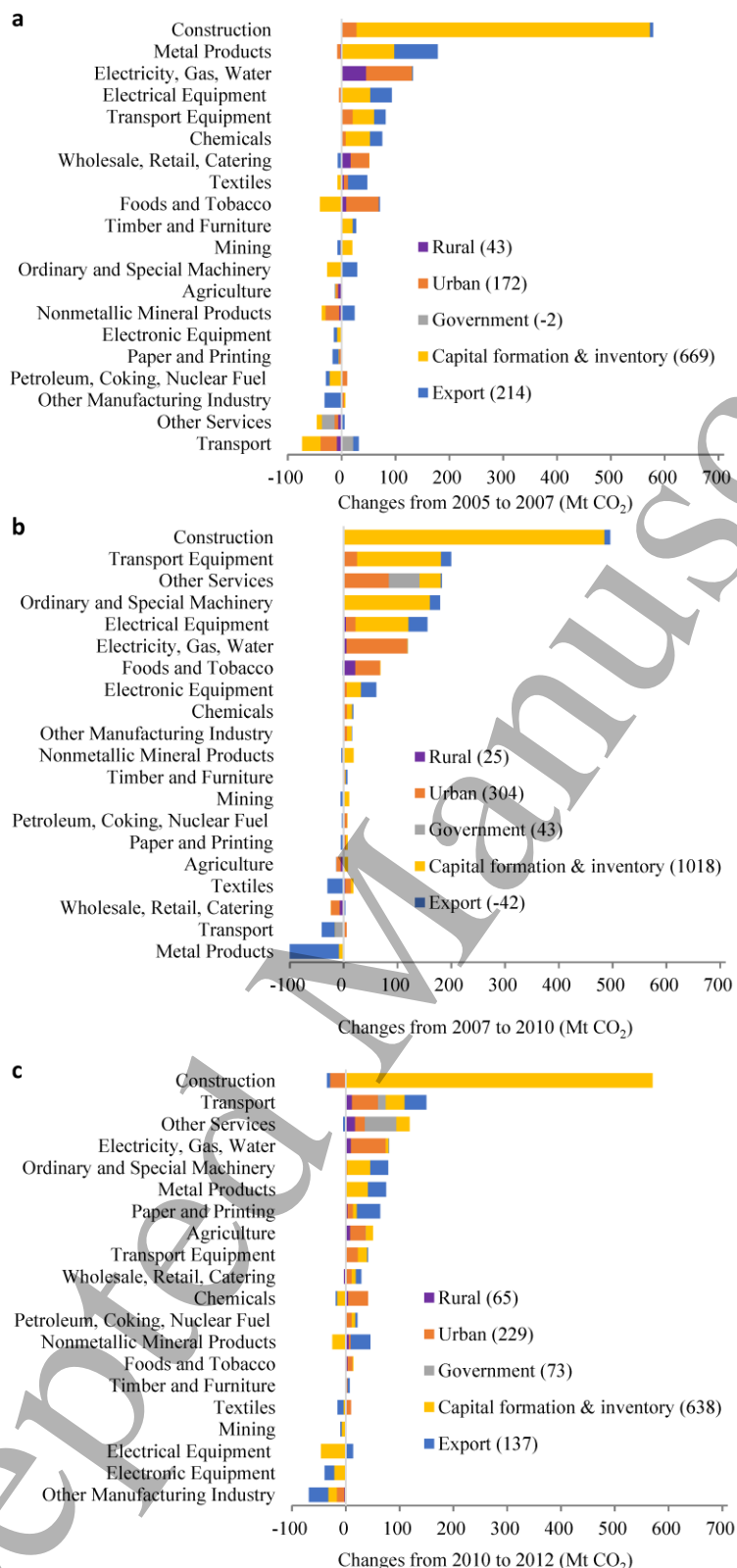


Fig. 3 Contributions of different sectors and final uses to Chinese CO₂ emissions growth from 2005 to 2012. (a), (b) and (c) show the results for 2005–2007, 2007–2010 and 2010–2012, respectively. The figures in parentheses refer to total contributions of different final uses to CO₂ emissions growth (Mt CO₂).

3.2 Changes in development patterns in the “new normal”

China has struggled to achieve a “new normal” since the global financial crisis. According to China’s traditional development model, production structure and consumption patterns drive Chinese CO₂ emissions growth, whereas efficiency gains constitute the main factor that offsets emissions (Guan et al 2009, Peters et al 2007). We found that production structure and consumption patterns caused 34% and 14% increases, respectively, in China’s CO₂ emissions from 2005 to 2010, whereas efficiency levels induced a 39% decrease in Chinese CO₂ emissions over the same period (Fig. 1).

However, the effects of these factors on Chinese CO₂ emissions have changed considerably under the “new normal”. First of all, as the strongest factor offsetting emissions from 2005 to 2010, efficiency drove a 1.4% increase in emissions from 2010 to 2012 (Fig. 4, blue bar). Almost all studies which focused on China’s emission changes during the time periods prior to 2010 have shown the great contributions of efficiency to offset CO₂ emissions (Chang and Lahr 2016, Guan et al 2009). Peters et al. (2007) summarized China’s CO₂ emission changes as a race between increasing consumption and efficiency gains. However, China’s lost its advantages of efficiency improvement during 2010-2012. This effect mainly resulted from efficiency losses in the transport and industrial sectors. Although the mean carbon intensity of the Chinese economy declined slightly from 2010 to 2012, the carbon intensity of the transport and industrial sectors increased by 15% and 2%, respectively.

1
2
3
4
5
6
7 By contrast, changes in production structure (Fig. 4, orange bar) and consumption
8 patterns (Fig. 4, purple bar) caused 2.6% and 1.3% decreases in Chinese CO₂
9 emissions, respectively, from 2010 to 2012. The two factors both drove increases in
10 CO₂ emissions during 2005-2010. From the production perspective, the effects of
11 production structure were mainly driven by the reduction of proportions of
12 carbon-intensive sectors in total inputs, i.e. inputs from transport, electricity, gas, and
13 nonmetallic mineral products sectors to other production sector. The sector of
14 electricity had the highest carbon intensity among all economic sectors, and its
15 proportion as inputs to other sectors declined from 5.1% in 2010 to 4.6% in 2012 (Fig.
16 S3). Further, the proportion of electricity sector as inputs to mining sector declined
17 from 13.0% to 11.4% during 2010-2012. The proportion of transport in total inputs
18 also declined from 5.6% to 4.6% over the same period. Further, the proportion of
19 transport as inputs to the sector of wholesale, retail, and catering declined from 12.7%
20 to 8.1% during 2010-2012.
21
22
23
24
25
26
27
28
29
30
31
32
33
34
35
36
37
38
39
40
41
42
43
44
45
46

47 From the consumption perspective, the effects of consumption patterns were mainly
48 due to the reduction of proportions of electrical equipment and chemicals in final use,
49 because the embodied carbon emission intensity (i.e. direct and indirect CO₂
50 emissions induced by per unit of final use) in these sectors was relatively higher (Fig.
51 S4). For example, the proportion of electrical equipment in total consumption-based
52 CO₂ emissions declined from 5.9% in 2010 to 4.7% in 2012, and the proportion of
53
54
55
56
57
58
59
60

1
2
3
4 chemicals in total consumption-based emissions also decreased from 3.4% to 3.2%
5
6
7 over the same period (Table S3).
8
9

10
11 Another change in the “new normal” is that the proportion of CO₂ emissions induced
12
13 by consumption (including household and government consumption) have begun to
14
15 increase. Prior to 2010, the proportion of consumption induced CO₂ emissions had a
16
17 declining trend. However, it grew from 28.6% in 2010 to 29.1% in 2012. Although it
18
19 is a very slight increase, it reflects Chinese efforts of expanding domestic demand and
20
21 stimulating consumption. This shift was mainly because of changes in China’s
22
23 investment and consumption structure (Fig. S5). China’s consumption rate (i.e. the
24
25 proportion of final consumption in GDP) had declined since 2000 until reaching the
26
27 lowest point with 48.5% in 2010. Meanwhile, its investment rate (i.e. the proportion
28
29 of capital formation in GDP) peaked. After that, its consumption rate increased to
30
31 51.6%, while the investment rate declined to 44.9% in 2015. According to the report
32
33 of the State Information Center, China will shift gradually from an investment to a
34
35 consumption-driven economy, and its consumption rate will continue to increase until
36
37 peaking about 60-70% (State Information Center 2016). This shift will result in
38
39 increases in the proportion of CO₂ emissions induced by consumption.
40
41
42
43
44
45
46
47
48
49
50
51
52
53
54
55
56
57
58
59
60

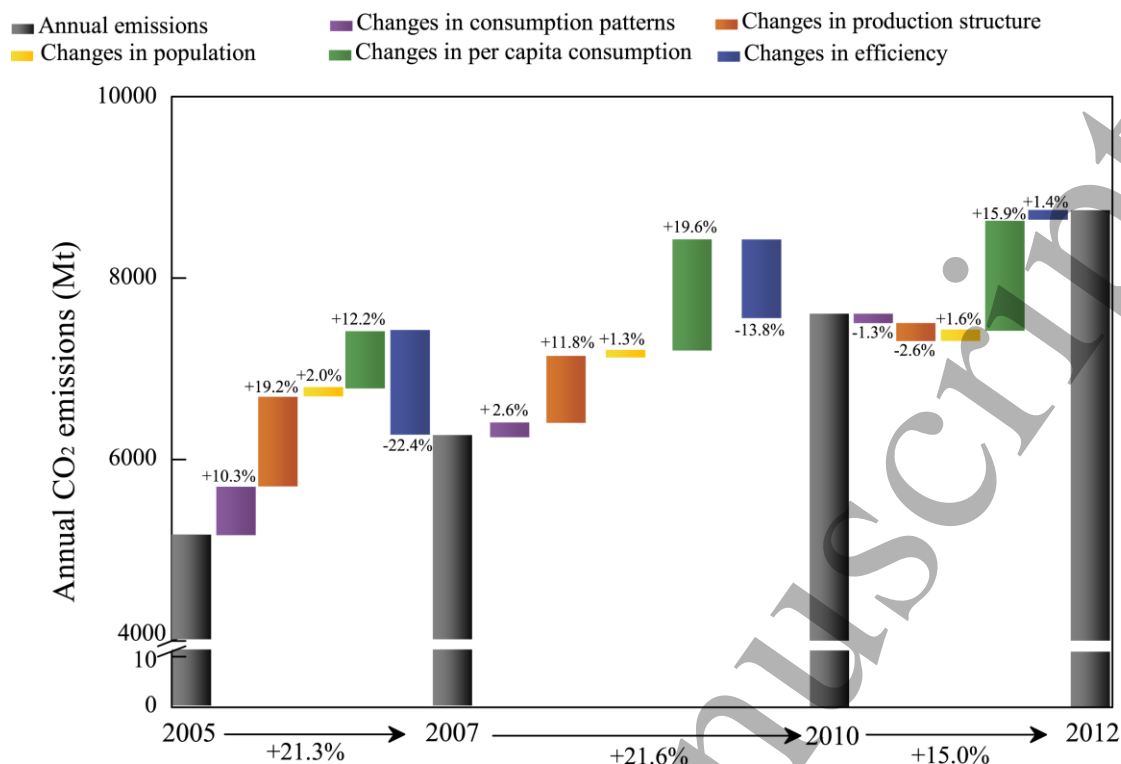


Fig. 4 Contributions of different factors to changes in Chinese CO₂ emissions for 2005–2007, 2007–2010 and 2010–2012. As the strongest factor offsetting emissions from 2005 to 2010, efficiency drove emissions growth during the period 2010-2012. By contrast, in driving emissions growth from 2005 to 2010, production structure and consumption patterns decreased emissions during the period 2010- 2012.

4. Conclusions

The global financial crisis has affected the determinants of Chinese carbon emissions changes. The CO₂ emissions induced by Chinese exports from 2007 to 2010 declined, whereas the emissions induced by capital formation grew rapidly over the same period. Chinese export production always contributed to a large part of its CO₂ emissions growth before 2007. However, the demand for Chinese exports waned due to the global financial crisis, which resulted in the decreases of the CO₂ emissions induced by exports from 2007 to 2010. To minimize the impacts of the financial crisis, the Chinese government created a four trillion Yuan stimulus package that mainly

1
2
3
4 focused on fixed assets and construction. Consequently, more than 70% of the CO₂
5
6
7 emissions growth from 2007 to 2010 resulted from capital formation. Therefore,
8
9
10 government policies have big influences on CO₂ emissions. China's CO₂ emissions
11
12 would be much less during 2007-2010 if the stimulus package was not created.
13
14

15
16
17 In the “new normal”, the strongest factors that offset CO₂ emissions have shifted from
18
19
20 efficiency gains to structural upgrading. Efficiency was the strongest factor offsetting
21
22
23 emissions before 2010 but drove an increase in emissions in the period 2010-2012. As
24
25
26 a developing country, China has the late-developing advantages, and its carbon
27
28
29 intensity usually declined more rapidly than that in developed countries. However,
30
31
32 China has lost its advantages of efficiency improvement since 2010, which means that
33
34
35 the country needs to find new ways to mitigate its CO₂ emissions. Production
36
37
38 structure and consumption patterns are likely to be main driving forces to reduce
39
40
41 emissions in China in the future. These two factors caused decreases in CO₂ emissions
42
43
44 in China from 2010 to 2012, although they were the main factors to drive emissions
45
46
47 growth before 2010. The effects of these two factors were mainly caused by the
48
49
50 structural upgrading from production and consumption perspectives, respectively.
51
52
53 From the production perspective, the effects of production structure were mainly due
54
55
56 to the reduction of proportions of transport, electricity, gas, and nonmetallic mineral
57
58
59 products in total inputs. From the consumption perspective, the effects of
60
equipment and chemicals in final use.

1
2
3
4
5
6
7 In addition, China has a tendency to shift gradually from an investment to a
8
9 consumption-driven economy. The proportion of CO₂ emissions induced by
10
11 consumption had a declining trend before 2010 but grew during 2010-2012. China's
12
13 new development model emphasizes the structural upgrading: shifting the balance of
14
15 growth away from heavy-industrial investment and towards domestic consumption,
16
17 particularly for services. This shift has been observed in the determinants of Chinese
18
19 CO₂ emission changes during 2010-2012 and is likely to continue, which gives China
20
21 opportunities to reduce CO₂ emissions while its GDP still grows. According to the
22
23 latest datasets, China's CO₂ emissions have declined from 2013 to 2014.
24
25
26
27
28
29
30
31
32

33 However, this paper has limitations. First, only five factors are considered to estimate
34
35 changes in China's CO₂ emission changes. Some other determinants, such as energy
36
37 structure and urbanization, are not analysed in this paper. In the future work, we will
38
39 make more detailed decomposition analysis on China's emission changes. Second, all
40
41 data of China's IO tables and carbon emissions inventories are aggregated into 20
42
43 economic sectors. Sector aggregation has impacts on model results. Su et al. (2010),
44
45 for example, estimated the effects of sector aggregation on CO₂ emissions embodied
46
47 in trade in input-output analysis and indicated that levels around 40 sectors are
48
49 sufficient to capture the overall share of emissions embodied in a region's exports.
50
51
52 Third, China is a very large country by area, and different provinces vary greatly in
53
54 population, production structure, consumption patterns and GDP. Regional differences
55
56
57
58
59
60

1
2
3
4 cannot be analysed based on China's national input-output tables. We have
5
6 constructed a 2012 MRIO table for 30 Chinese provinces and linked it to GTAP
7
8 global MRIO model. Based on the MRIO tables, we will analyse the drivers of
9
10 regional CO₂ emission changes for China.
11
12
13
14
15
16
17

18 **Acknowledgements**

19
20
21 This work was supported by National Key R&D Program of China [No.
22
23 2016YFA0602604], National Natural Science Foundation of China [No. 71603248,
24
25 71521002, 71020107026, 71573013 and 41328008], the UK Economic and Social
26
27 Research Council [No. ES/L016028/1], Natural Environment Research Council [No.
28
29 NE/N00714X/1], British Academy Grant [No. AF150310], and the joint Leverhulme
30
31 Trust and Social Sciences Faculty Postgraduate Studentships at the University of East
32
33 Anglia.
34
35
36
37
38
39
40
41
42
43

44 **References**

- 45
46 Arto I and Dietzenbacher E 2014 Drivers of the growth in global greenhouse gas emissions *Environ.*
47 *Sci. Technol.* 48 5388-5394
48
49 Baiocchi G and Minx J C 2010 Understanding changes in the UK's CO₂ emissions: A global
50 perspective *Environ. Sci. Technol.* 44 1177-1184
51
52 Chang N and Lahr M L 2016 Changes in China's production-source CO₂ emissions: insights from
53 structural decomposition analysis and linkage analysis *Econ. Syst. Res.* 28 224-242
54
55 Davis S J, Cao L, Caldeira K and Hoffert M I 2013 Rethinking wedges *Environ. Res. Lett.* 8 011001
56
57 Davis S J and Diffenbaugh N 2016 Dislocated interests and climate change *Environ. Res. Lett.* 11
58 061001
59
60 Davis S J and Socolow R H 2014 Commitment accounting of CO₂ emissions *Environ. Res. Lett.* 9
084018
Dietzenbacher E and Hoen A R 1998 Deflation of input-output tables from the user's point of view: a

- 1
2
3 heuristic approach *Rev. Income Wealth* 44 111-122
- 4
5 Dietzenbacher E and Los B 1998 Structural decomposition techniques: sense and sensitivity *Econ. Syst.*
6 *Res.* 10 307-324
- 7
8 Dietzenbacher E, Pei J and Yang C 2012 Trade, production fragmentation, and China's carbon dioxide
9 emissions *J. Environ. Econ. Manage.* 64 88-101
- 10
11 Dimaranan B V 2006 Global trade, assistance, and production: The GTAP 6 data base Center for
12 Global Trade Analysis, Purdue University
13 (https://www.gtap.agecon.purdue.edu/databases/v6/v6_doco.asp)
- 14
15 Ehrlich P R and Holdren J P 1971 Impact of population growth *Science* 171 1212-1217
- 16
17 EIA 2015 Recent statistical revisions suggest higher historical coal consumption in China U.S. Energy
18 Information Administration (EIA) (<http://www.eia.gov/todayinenergy/detail.php?id=22952>)
- 19
20 Feng K, Davis S J, Sun L and Hubacek K 2015 Drivers of the US CO₂ emissions 1997-2013 *Nat.*
21 *Commun.* 6 7714
- 22
23 Green F and Stern N 2015 China's "new normal": structural change, better growth, and peak emissions
24 Grantham Research Institute on Climate Change and the Environment, London School of
25 Economics and Political Science
26 (http://www.lse.ac.uk/GranthamInstitute/wp-content/uploads/2015/06/Chinas_new_normal_gran_2015.pdf)
- 27
28 Guan D, Hubacek K, Weber C L, Peters G P and Reiner D M 2008 The drivers of Chinese CO₂
29 emissions from 1980 to 2030 *Glob. Environ. Change* 18 626-634
- 30
31 Guan D, Peters G P, Weber C L and Hubacek K 2009 Journey to world top emitter: An analysis of the
32 driving forces of China's recent CO₂ emissions surge *Geophys. Res. Lett.* 36 L04709
- 33
34 Hoekstra R and Van Den Bergh J C 2002 Structural decomposition analysis of physical flows in the
35 economy *Environ. Resour. Econ.* 23 357-378
- 36
37 IPCC 2006 2006 IPCC guidelines for national greenhouse gas inventories IPCC National Greenhouse
38 Gas Inventories Programme (<http://www.ipcc-nggip.iges.or.jp/public/2006gl/index.html>)
- 39
40 Kotchen M J and Mansur E T 2016 Correspondence: Reassessing the contribution of natural gas to US
41 CO₂ emission reductions since 2007 *Nat. Commun.* 7 10648
- 42
43 Leontief W and Ford D 1972 Air pollution and the economic structure: empirical results of input-output
44 computations in: Brody, A., Carter, A.P. (Eds.) Input-output techniques North-Holland pp 9-30
- 45
46 Liang S, Feng T, Qu S, Chiu A S, Jia X and Xu M 2016 Developing the Chinese Environmentally
47 Extended Input - Output (CEEIO) database *J. Ind. Ecol.* (doi 10.1111/jiec.12477)
- 48
49 Liu Z, Guan D, Wei W, Davis S J, Ciais P, Bai J, Peng S, Zhang Q, Hubacek K, Marland G, Andres R J,
50 Crawford-Brown D, Lin J, Zhao H, Hong C, Boden T A, Feng K, Peters G P, Xi F, Liu J, Li Y,
51 Zhao Y, Zeng N and He K 2015 Reduced carbon emission estimates from fossil fuel
52 combustion and cement production in China *Nature* 524 335-338
- 53
54 Malik A, Lan J and Lenzen M 2016 Trends in global greenhouse gas emissions from 1990 to 2010
55 *Environ. Sci. Technol.* 50 4722-4730
- 56
57 Meng J, Liu J, Xu Y, Guan D, Liu Z, Huang Y and Tao S 2016 Globalization and pollution:
58 tele-connecting local primary PM_{2.5} emissions to global consumption *Proc. R. Soc. A.* 472
59 1-17
- 60
61 Meng J, Liu J F, Xu Y and Tao S 2015 Tracing Primary PM_{2.5} emissions via Chinese supply chains
62 *Environ. Res. Lett.* 10 054005
- 63
64 Mi Z-F, Pan S-Y, Yu H and Wei Y-M 2015 Potential impacts of industrial structure on energy

- consumption and CO₂ emission: a case study of Beijing *J. Clean Prod.* 103 455-462
- Mi Z-F, Wei Y-M, He C-Q, Li H-N, Yuan X-C and Liao H 2017a Regional efforts to mitigate climate change in China: a multi-criteria assessment approach *Mitig. Adapt. Strateg. Glob. Chang.* 22 45-66
- Mi Z, Wei Y-M, Wang B, Meng J, Liu Z, Shan Y, Liu J and Guan D 2017b Socioeconomic impact assessment of China's CO₂ emissions peak prior to 2030 *J. Clean Prod.* 142 2227-2236
- Mi Z, Zhang Y, Guan D, Shan Y, Liu Z, Cong R, Yuan X-C and Wei Y-M 2016 Consumption-based emission accounting for Chinese cities *Appl. Energy* 184 1073-1081
- Minx J C, Baiocchi G, Peters G P, Weber C L, Guan D and Hubacek K 2011 A "carbonizing dragon": China's fast growing CO₂ emissions revisited *Environ. Sci. Technol.* 45 9144-9153
- Narayanan G, Badri A A and McDougall R 2015 Global trade, assistance, and production: the GTAP 9 data base Center for Global Trade Analysis, Purdue University (https://www.gtap.agecon.purdue.edu/databases/v9/v9_doco.asp)
- National Bureau of Statistics 2007 China Statistical Yearbook 2007 China Statistics Press Beijing
- National Bureau of Statistics 2011 China Statistical Yearbook 2011 China Statistics Press Beijing
- National Bureau of Statistics 2014 China Energy Statistical Yearbook 2014 China Statistics Press Beijing
- National Bureau of Statistics 2015a China Energy Statistical Yearbook 2015 China Statistics Press Beijing
- National Bureau of Statistics 2015b China Statistical Yearbook 2015 China Statistics Press Beijing
- National Bureau of Statistics 2016 China input-output tables National Bureau of Statistics of China (<http://data.stats.gov.cn/ifnormal.htm?u=/files/html/quickSearch/trcc/trcc01.html&h=740>)
- Peters G, Weber C and Liu J 2006 Construction of Chinese energy and emissions inventory Norwegian University of Science and Technology Trondheim, Norway
- Peters G P, Weber C L, Guan D and Hubacek K 2007 China's growing CO₂ emissions a race between increasing consumption and efficiency gains *Environ. Sci. Technol.* 41 5939-5944
- Rose A and Casler S 1996 Input-output structural decomposition analysis: a critical appraisal *Econ. Syst. Res.* 8 33-62
- Sevaldson P 1976 Price changes as causes of variations in input-output coefficients in: Polenske, K.R., Skolka, J.V. (Eds.) *Advances in Input-Output Analysis* Ballinger Cambridge, MA pp 113-133
- Shan Y, Liu J, Liu Z, Xu X, Shao S, Wang P and Guan D 2016a New provincial CO₂ emission inventories in China based on apparent energy consumption data and updated emission factors *Appl. Energy* 184 742-750
- Shan Y, Liu Z and Guan D 2016b CO₂ emissions from China's lime industry *Appl. Energy* 166 245-252
- State Information Center 2016 Research on China's future consumption trends [Chinese document] State Information Center (<http://www.sic.gov.cn/News/455/6794.htm>)
- Su B and Ang B 2012 Structural decomposition analysis applied to energy and emissions: some methodological developments *Energy Econ.* 34 177-188
- Su B, Huang H C, Ang B W and Zhou P 2010 Input-output analysis of CO₂ emissions embodied in trade: The effects of sector aggregation *Energy Econ.* 32 166-175
- UNSD 1999 Handbook of input-output table compilation and analysis United Nations Statistical Division (UNSD) New York (http://unstats.un.org/unsd/publication/SeriesF/SeriesF_74E.pdf)
- UNSD 2016 National account main aggregates database United Nations Statistical Division (UNSD) (<http://unstats.un.org/unsd/snaama/Introduction.asp>)

- 1
2
3
4
5
6
7
8
9
10
11
12
13
14
15
16
17
18
19
20
21
22
23
24
25
26
27
28
29
30
31
32
33
34
35
36
37
38
39
40
41
42
43
44
45
46
47
48
49
50
51
52
53
54
55
56
57
58
59
60
- Wan L, Cai W, Jiang Y and Wang C 2016 Impacts on quality-induced water scarcity: drivers of nitrogen-related water pollution transfer under globalization from 1995 to 2009 *Environ. Res. Lett.* 11 074017
- Wei Y-M, Mi Z-F and Huang Z 2015 Climate policy modeling: An online SCI-E and SSCI based literature review *Omega* 57 70-84
- Wolff E N 1994 Productivity measurement within an input-output framework *Reg. Sci. Urban Econ.* 24 75-92
- Wood R 2009 Structural decomposition analysis of Australia's greenhouse gas emissions *Energy Policy* 37 4943-4948
- Xiao B, Niu D and Guo X 2016 The driving forces of changes in CO₂ emissions in China: A structural decomposition analysis *Energies* 9 259
- Xu Y and Dietzenbacher E 2014 A structural decomposition analysis of the emissions embodied in trade *Ecol. Econ.* 101 10-20
- Yamakawa A and Peters G P 2011 Structural decomposition analysis of greenhouse gas emissions in Norway 1990–2002 *Econ. Syst. Res.* 23 303-318
- Zhang Y-J, Bian X-J, Tan W and Song J 2015 The indirect energy consumption and CO₂ emission caused by household consumption in China: an analysis based on the input–output method *J. Clean Prod.* (10.1016/j.jclepro.2015.08.044)
- Zhang Y-J, Hao J-F and Song J 2016 The CO₂ emission efficiency, reduction potential and spatial clustering in China's industry: Evidence from the regional level *Appl. Energy* 174 213-223
- Zhang Y-J, Peng Y-L, Ma C-Q and Shen B 2017 Can environmental innovation facilitate carbon emissions reduction? Evidence from China *Energy Policy* 100 18-28