

Non-surgical therapy of chronic periodontitis with adjunctive systemic azithromycin or amoxicillin/metronidazole

Holger F. R. Jentsch^{1*}, Andreas Buchmann^{2*}, Abel Friedrich², Sigrun Eick³

¹Centre for Periodontology, Department for Cariology, Endodontology and Periodontology, University Hospital of Leipzig, Leipzig, Germany;

²Private dental practice, Weiskirchen, Germany;

³Department of Periodontology, Laboratory of Oral Microbiology, School of Dental Medicine, University of Bern, Bern, Switzerland

*Both authors contributed equally to the manuscript.

Running title: SRP and azithromycin

Correspondence address:

Holger F. R. Jentsch

University Hospital of Leipzig

Centre for Periodontology

Department of Cariology, Endodontology and Periodontology

Liebigstr. 12, Haus 1

D-04103 Leipzig

Germany

Tel: +49-341-9721208

Fax: +49-341-9721259

E-mail: jenh@medizin.uni-leipzig.de

Abstract

Objectives: To compare the effect of systemic adjunctive use of azithromycin with amoxicillin/metronidazole to scaling and root planing (SRP) in a clinical study.

Materials and Methods: Data from 60 individuals with chronic periodontitis were evaluated after full-mouth SRP. Antibiotics were given from the first day of SRP, in the test group (n=29) azithromycin for three days, in the control group (n=31) amoxicillin/metronidazole for seven days. Probing depth (PD), attachment level (AL) and **bleeding on probing (BOP)** were recorded at baseline and after 3 and 12 months. Gingival crevicular fluid was analyzed for MMP-8 and IL-1beta levels. Subgingival plaque was taken for assessment of the major bacteria associated with periodontitis.

Results: In both groups, PD, AL and BOP were significantly reduced ($p < 0.001$).

A few significant differences between the groups were found; AL and BOP were significantly better in the test than in the control group at the end of the study ($p = 0.020$ and 0.009). Periodontopathogens were reduced most in the test group.

Conclusions: A noninferiority of the treatment with azithromycin in comparison with amoxicillin / metronidazole can be stated. The administration of azithromycin could be an alternative to the use of amoxicillin/metronidazole adjunctive to SRP in patients with moderate or severe chronic periodontitis, however a randomized placebo controlled multicenter study is needed.

Clinical Relevance: Application of azithromycin as a single antibiotic for three days might be considered as an additional adjunctive antibiotic to SRP in selected patients.

Key words: antibiotics; chronic periodontitis; cytokines; periodontopathogens; scaling and root planing

Scaling and root planing (SRP) is an effective causative method for infection control in the treatment of periodontal disease [1]. Subgingival mechanical debridement results in a mean attachment gain of 2.16 mm in pockets with an initial depth \geq 7 mm [2]. Different systemic and local antimicrobial adjuncts have been shown to improve the outcome of SRP [3-5]. Metronidazole in combination with SRP is more effective than SRP alone in terms of probing depth reduction and clinical attachment level gain [6]. Amoxicillin/metronidazole is an effective adjunct to SRP of chronic periodontitis and an often studied treatment procedure [3]. The clinical and microbiological results of SRP are better with the combination of amoxicillin /metronidazole also in type 2 diabetes patients than without adjunctive antibiotics [7]. At the moment the use of amoxicillin/metronidazole is largely debated considering multiple aspects of the advantages and disadvantages of antibiotics in general and in periodontology [8].

More and more studies evaluated azithromycin as an adjunctive antibiotic in periodontal treatment. Azithromycin is effective against Gram-negative aerobic and anaerobic bacteria, is slowly released to the tissue and has a long half-life in periodontal tissues [9]. It is a macrolide which inhibits bacterial protein synthesis, quorum sensing, reduces biofilm formation and modulates the host response [10]. Azithromycin suppresses in vitro the formation and activity of osteoclasts [11] and it diminishes the production of inflammatory mediators in gingival fibroblasts stimulated by *Porphyromonas gingivalis* LPS [12].

By using a daily single dose of 500 mg for three days higher reduction of probing depth and more attachment level gain than by SRP with placebo have been reported [13-15]. However there are also studies that did not reveal any additional effect of azithromycin regarding the outcome of SRP [16-19]. Long lasting beneficial effects of repeated adjunctive azithromycin on gingival inflammation, BOP and tooth mobility were observed up to 192 weeks in an observational clinical study [20].

To our best knowledge up to now no study has compared the adjunctive effect of azithromycin to that of amoxicillin and metronidazole in conjunction with nonsurgical periodontal therapy. Therefore the aim of the present study was to evaluate in a prospective randomized clinical trial over 12 months the two antibiotic regimens by analyzing clinical, biochemical and microbiological data. The hypothesis to test of this study was that there is inferiority of adjunctive treatment with azithromycin in relation to the treatment with amoxicillin/metronidazole regarding changes of the clinical parameters PD, AL and BOP.

Material and Methods

Patients

Following approval of the study by the Ethics Commission (#240-2011) of the University of Leipzig Medical Faculty, 96 randomly selected patients were screened and asked to participate in the study. Sixty-two volunteers (29 female and 33 male) gave written and informed consent to their participation in the randomised clinical study in a private dental practice (A.B.). In obtaining the informed consents and in conducting the study, the principles outlined in the Declaration of Helsinki, as revised in 2000, were followed. Only individuals with moderate or severe chronic periodontitis [21] **were** included in the study. In addition two other inclusion criteria were at least 5 sites with probing depths (PD) ≥ 5 mm and a minimum of 14 teeth. The interproximal plaque index (API, [22]) was required to be $\leq 35\%$ after two initial prophylaxis and instruction sessions. Results of the API $\leq 35\%$ reflect a sufficient hygiene to start with periodontal therapy [22]. Individuals were excluded if they had taken antibiotics in the three months prior to the study or if they had received periodontal treatment during the previous year. Pregnancy, nursing, smoking, chronic diseases such as diabetes mellitus or rheumatoid arthritis and allergy to ingredients in the drug were also criteria for exclusion.

All treatment was performed by the same dentist (A.B.). To avoid bias, another investigator blinded to the treatment (A.F.) collected plaque, GCF and assessed the clinical data. A computer-generated randomization table was used to recruit and blindly randomize 62 participants either to **the** control (n=31) or experimental group (n=31) with a 1:1 allocation ratio. Allocation concealment was obtained using a sealed opaque envelope containing the treatment (number of allocation table) to the specific subject. The sealed envelope containing treatment assignment was opened immediately after SRP. All measurements were carried out by a single masked examiner (A.F.). For intra-examiner calibration the repeated repeated measurements of the PD of one quadrant in 10 patients were used for reliability testing resulting in κ of 0.91. He did not perform the SRP and was unaware of the treatment assignment. Documentation was performed by an assistant.

The clinical variables PD, attachment level (AL) and bleeding on probing (BOP) of all teeth were determined in a six-point measurement per tooth (mesiobuccal, buccal, distobuccal, mesiooral, oral and distooral) with a manual periodontal probe (PCP-

UNC 15, Hu-Friedy Manufacturing Co., Chicago, IL, USA) at three appointments: before SRP (baseline, t1), after three (t3) and 12 months (t4). At the same time, samples of the subgingival biofilm and gingival crevicular fluid (GCF) were taken from the deepest site per quadrant. To analyze a short-time effect on host response, GCF was sampled in addition 14 days after SRP (t2).

For sampling GCF, sterile paper strips (Periopaper; Oraflow Inc., Smithtown, New York, USA) were placed at the entrance of the periodontal pocket for 30 s. This intracrevicular superficial method [23] ensures that the subgingival biofilm in the pocket is not destroyed. Following this, endodontic paper points (ISO 60, Roeko GmbH, Langenau, Germany) were inserted into the pocket until resistance was felt and were left in place for 30 s. The strips were pooled and placed into a tube containing proteinase inhibitors (Sigma-Aldrich, St. Louis, MO, USA). All samples were stored at -20°C immediately after collection and transferred to the laboratory within one month where the plaque samples were again stored at -20°C, and the GCF samples at -80°C until analysis.

Therapy and follow-up treatment

Under local anaesthesia with articaine hydrochloride/epinephrine hydrochloride (Ultracain D-S, Sanofi-Aventis, Frankfurt/Main, Germany), the participants received full-mouth SRP in two sessions carried out **during two consecutive days** using hand and ultrasonic instruments. All of the patients used a chlorhexidine digluconate mouthrinse (Chlorhexamed forte 0.2%, GlaxoSmithKline Healthcare, Bühl, Germany) for one minute twice daily during the first seven days after SRP. Careful normal oral hygiene with toothbrush and interdental brushes was performed.

Antibiotics were given from the first day of SRP. The patients of the test group (n=31) received **500 mg/d** azithromycin (**Azithromycin** 500 mg, Hexal AG, Holzkirchen, Germany) **for three days**.

Amoxicillin (3x500 mg/d, Amoxihexal 500 mg, Hexal AG, Holzkirchen, Germany) and metronidazole (3x400 mg/d, Metronidazol 400 mg, Hexal AG, Holzkirchen, Germany) were administered to the patients of the control group for 7 days. No blinding of the packing and pharmaceutical form has been performed, the drugs were provided by a public pharmacy. During the following three or seven days a dental assistant of the private practice reminded the patient to take the next or remaining doses. After intake of the tablets, patients were asked to return the tablet packagings to the dental

practice.

Every three months careful supportive periodontal therapy was performed by an **experienced clinician (A.B.)**. During the appointment of supportive periodontal care remotivation and reinstruction have been performed. The patients were controlled for exact drug use. The participants were asked to address the private practice in case of adverse events due to the antibiotic therapy.

Biochemical and microbiological analysis

Before analyzing, GCF samples were eluted at 4°C overnight into 750 µl phosphate-buffered saline containing proteinase inhibitors. From the eluates, the levels of interleukin (IL)-1β and matrixmetalloprotease (MMP)-8 were determined by using commercially available enzyme-linked immunosorbent assay (ELISA) kits (R&D Systems Europe Ltd., Abingdon, UK) according to the manufacturer's instructions. The detection levels of the kits were 2 pg/site for IL-1β and 100 pg/site for MMP-8.

Microbiological analysis was made as described recently [24]. In short, DNA was extracted by using **the** Chelex method [25]. Following, the microlDent®plus11 test (Hain Lifescience, Nehren, Germany) was used according to the manufacturer's description. The test is able to identify 11 periodontopathogenic bacterial species after two PCR runs and a subsequent reverse hybridization. Intensity of staining of the strips was used for semi-quantification. Two qualified investigators determined independently the score (0 – no band (negative), 1 – weak band (low load), 2 – clear band (moderate load), 3 – strong band (high load), 4 – very strong band (very high load)). Both the reference bands and the hybridization controls were used for adjustment. The qualitative results were used for an additional analysis: the positive results were counted for the major periodontopathogens (*Aggregatibacter actinomycetemcomitans*, *P. gingivalis*, *Tannerella forsythia* and *Treponema denticola*) and for all analysed bacterial species (in addition *Parvimonas micra*, *Fusobacterium nucleatum / necrophorum*, *Campylobacter rectus*, *Eubacterium nodatum*, *Eikenella corrodens*, *Capnocytophaga* sp.).

Data analysis

The null hypothesis of our study was that there are statistically significant differences in the clinical parameters PD, AL and BOP between the test and control groups with inferiority of the test group. Change of probing depth (PD) at the 12-months

appointment was set as the primary outcome and used to determine sample size. A mean difference of 1 mm in observed PD with a standard deviation of 1 mm between two groups or two examination dates would require ≥ 16 patients per group in order to detect a significant difference ($p \leq 0.05$) with a test power of 80% (GraphPad StatMate v.2.0 for Mac, GraphPad Software, San Diego, CA, U.S.A.). Secondary outcome variables were changes of PD after three months, in the number of sites with PD ≥ 5 mm, occurrence of BOP, mean AL, levels of MMP-8 and IL-1 β as well as the counts of selected pathogenic bacteria associated with periodontitis after three and 12 months.

Statistical analysis of the clinical and laboratory data was performed using the software SPSS® Statistics 21.0 (IBM Corporation, New York, NY, USA). Unit of analysis in all statistical tests was the individual. For both intra- and inter-group comparisons, non-parametric tests (Wilcoxon test for paired samples and Mann Whitney U –test, respectively) were used. A level of $\alpha \leq 0.05$ was considered as being significant.

Results

The study was performed in 2012 and 2013. Fig. 1 presents the study flow adapted to Moher et al. [26]. The demographic data of these 60 patients are summarized in Table 1.

No severe adverse effects of the different antibiotics were observed during the study. No significant differences were seen at API. Changes of the clinical data during the study are presented in Table 2. BOP was not significantly different between the groups after three months, but after 12 months lower in the test group than in the controls ($p = 0.009$). The changes of BOP were significantly higher in the test group during the whole study period ($p < 0.001$). AL was significantly better in the test group at the end of the study ($p = 0.020$). The mean change of PD after 12 months as well as the change of AL during the first three months and during the whole study period were significantly higher in the test group than in the controls ($p = 0.001$, $p = 0.001$, $p = 0.021$). There were significantly fewer sites with AL ≥ 5 mm after three and 12 months in the test group in comparison with the control group ($p = 0.019$, $p = 0.037$).

The levels of MMP-8 and IL-1 β are given in Table 3. No significant differences occurred at MMP-8.

The analysis of sums of positive results for analyzed bacteria revealed no significant difference between the test and control groups at baseline. After three and 12 months lower numbers of positive results were detected in the test group than in the control group (Table 4).. There were also no significant differences between test and control groups at the semi-quantitative analysis of 11 tested bacterial species at baseline. Of the major periodontopathogens lower counts of *T. denticola*, *P. intermedia*, were detected in the test group than in the control group ($p = 0.031$, 0.016) after three months. After 12 months still the counts of *T. denticola* were significantly lower in the test group ($p = 0.002$)(Fig. 2).

Discussion

This study analyzed the effects of two different regimes of adjunctive administration of systemic antibiotics during SRP in cases with moderate to severe chronic periodontitis on clinical, biochemical and microbiological results. To our best knowledge and literature search such a study approach has not been published until now. The test hypothesis can be rejected, inferiority of adjunctive antibiotic treatment with azithromycin was not observed. The change of mean PD after 12 months was set as the primary outcome. The difference between the groups was only 0.32 mm in median (significance in favor of azithromycin). From the clinical point of view PD, AL and BOP were improved in both groups at every follow-up appointment underlining the efficacy of both treatments. Favorable 12-months results for adjunctive azithromycin in comparison to SRP only were reported for the treatment of aggressive periodontitis, here the difference of mean PD difference was about 1 mm [14]. Comparing different adjunctive treatment regimens in chronic periodontitis azithromycin was as effective as metronidazole in reducing mean PD [27] or did not show significant differences to exclusive SRP only after one year [17].

The advantage of the use of azithromycin is the short course of administration of the antibiotic which may contribute to the patients' compliance. We did not see any side effect and no patient stopped the intake of either azithromycin or the combination of amoxicillin and metronidazole.

A systematic review calculated a mean reduction of 1.41 mm for PD and of 0.94 mm for AL after SRP with adjunctive amoxicillin/metronidazole [4]. In comparison to these results our study revealed 1.3 mm improvement of PD and 1.1 mm attachment gain for the control group with adjunctive amoxicillin/metronidazole. These results are

reasonable for SRP in a private dental practice. Most studies on SRP with and without adjunctive antibiotics have been conducted at universities. The conditions there may differ to a certain extent from those in private dental practices. Further attachment loss is reduced when patients are treated at universities conditions and when regular supportive periodontal care is provided [28]. During the supportive periodontal therapy a better stability of attachment level was found by specialist care as compared to general practice [29]. In our study the treatment was performed by a dentist with special interest in periodontology in a general dental practice. It should be taken into account that this is the normal clinical situation for the most patients. In general, the analyzed bacteria were more reduced after adjunctive azithromycin than after the combined administration of amoxicillin and metronidazole. After three and 12 months *T. denticola* was found to be significantly lower in the subgingival biofilm in the test group. This finding is important because *T. denticola* is strongly related to further periodontal breakdown in periodontitis and to the recurrence of the disease [30]. *T. denticola* lives in metabolic symbioses with *P. gingivalis* [31] and is difficult to suppress by combined mechanical and antibiotic therapy [32]. Azithromycin activity is not limited on killing bacteria, it decreases also the bacterial virulence. In subinhibitory concentrations it inhibits the fimbrial production of *P. gingivalis* [33], reduces biofilm formation and decreases the counts of *P. gingivalis* within the biofilm [34]. Azithromycin is of interest for the treatment of *Pseudomonas aeruginosa* infections. Although not acting growth inhibitory it suppresses the expression of virulence factors, biofilm formation and quorum sensing [35].

On the other hand, azithromycin interferes with immune cells. In our study the levels of the inflammatory markers MMP-8 and IL-1 β were determined immediately 14 days up to one year after starting the intake of the antibiotics. IL-1 β belonging to the interleukin-1 cytokines is induced by proinflammatory agents such as lipopolysaccharide, TNF and IL-1 β itself; it accounts for neutrophil infiltration and tissue turnover via inducing matrix metalloproteinases (MMPs) [36]. MMPs as a family of enzymes which degrade extracellular matrix and basement membrane components are mostly produced in a latent form; activation most involves tissue, plasma and bacterial proteinases together with oxidative stress [37]; MMP-8 (neutrophil collagenase) targets native collagen [38].

The only striking result was seen after 14 days in the test group, here the levels of IL-1 β decreased significantly ($p=0.030$) and those of MMP-8 by trend ($p = 0.061$)

suggesting an influence of azithromycin on host cells. In vitro, the uptake of azithromycin by monocytic cells leads to an enhanced release of inflammatory mediators (e.g. IL-1 β) and reduced killing which are reversed after 24 hours [39]. The mRNA expression and following the protein levels of IL-10 are increased dose-dependently by azithromycin in activated monocytes [40]. In healthy volunteers it was shown, that IL-8 and IL-1 β levels increased up to 24 hours after intake of azithromycin and returned to baseline after 28 days [41]. Azithromycin reduces the amount of gingival crevicular fluid as well as several cytokines (IL-1 β , IL-8, TNF- α) in the gingival crevicular fluid [42]. Our results are comparable to those of another study in chronic periodontitis patients, where MMP-8 levels decreased immediately 14 days after treatment, while no difference to baseline was found 3 months later [17].

Our study has limitations. No negative control, an SRP without adjunctive antibiotic treatment, was included into the study. Although the examiner was not aware of the treatment groups, the drugs were not blinded to the clinician and no placebo was used. Inclusion criteria were at least 5 sites with PD \geq 5 mm. However it should be mentioned that the majority of the sites with \geq 5 mm had a PD of 5 mm. This might influence the favorable results regarding azithromycin. The results of this one-center study need to be confirmed in a randomized placebo-controlled multicenter trial.

Although comparing here two groups with adjunctive antibiotics, the use should be limited to selected cases. An absolute precondition is a well performed mechanical plaque control since it is well known that antibiotics are less active within biofilms [43, 44]. Irrespective of this a global problem is the development of resistance which is clearly associated with the consumption of antibiotics [45].

Within in the limits of the present study it can be summarized that azithromycin might be an alternative when an adjunctive antibiotic treatment of moderate to severe chronic periodontitis during SRP is needed.

Acknowledgments

The authors appreciate the laboratory work of Stéphanie Larti, Anna Magdon and Marianne Weibel. They are grateful to Timothy Jones (Institute of Applied Linguistics and Translatology, University of Leipzig) for proofreading and to Walter B. Bürgin, Dipl. Biomed. Ing. (University of Bern) for statistical support.

Conflict of interest

The authors declare that they have no conflict of interest. The study was funded by the participating institutions and partly supported by Hain Diagnostica, Nehren, Germany, who provided the materials for microbiological laboratory analyses.

References

Figures

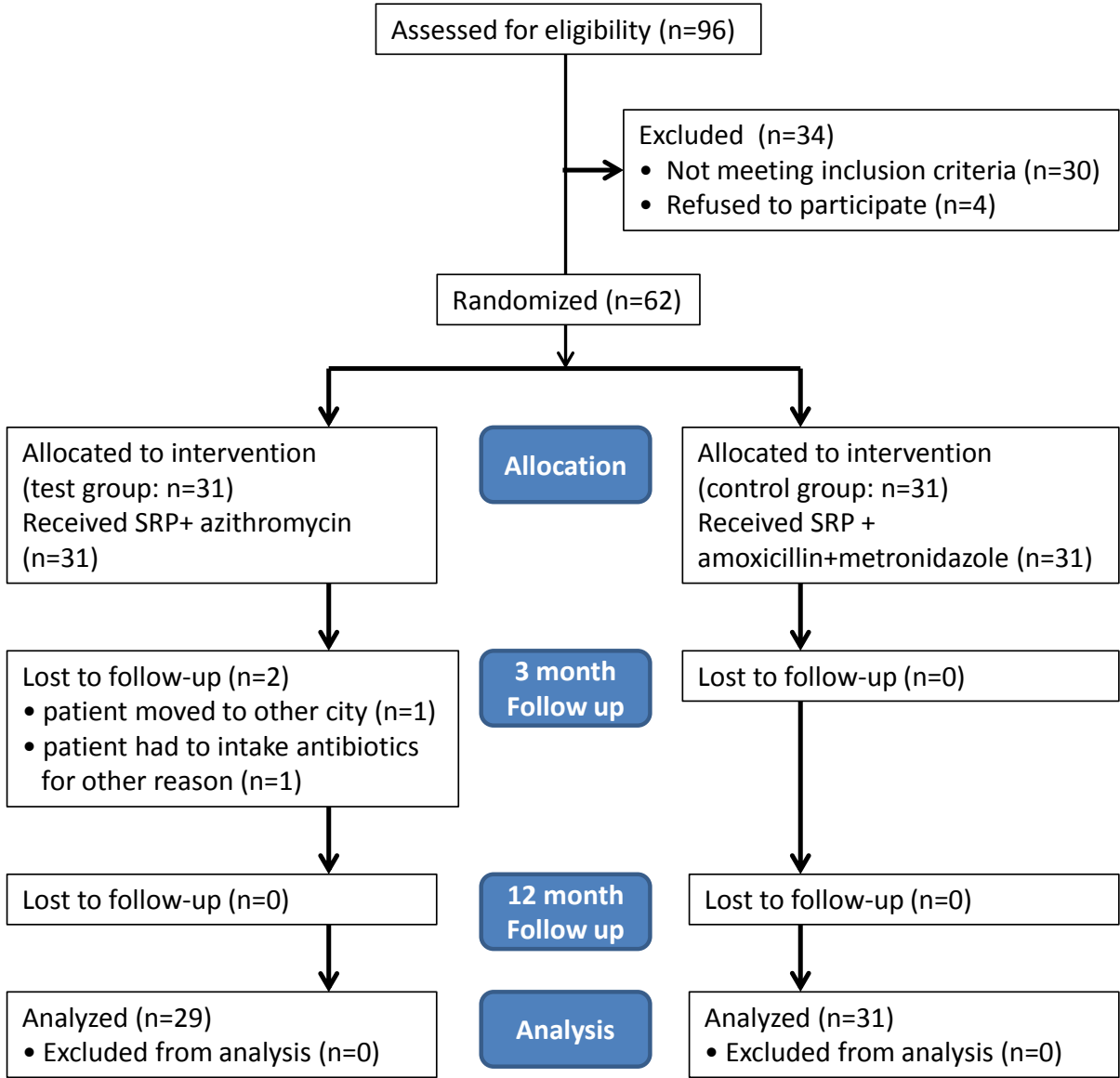


Fig. 1. Flowchart (adapted to Moher et al. [26]) of the study analysing the effect of azithromycin in comparison to amoxicillin/metronidazole as an adjunct after scaling and root planing

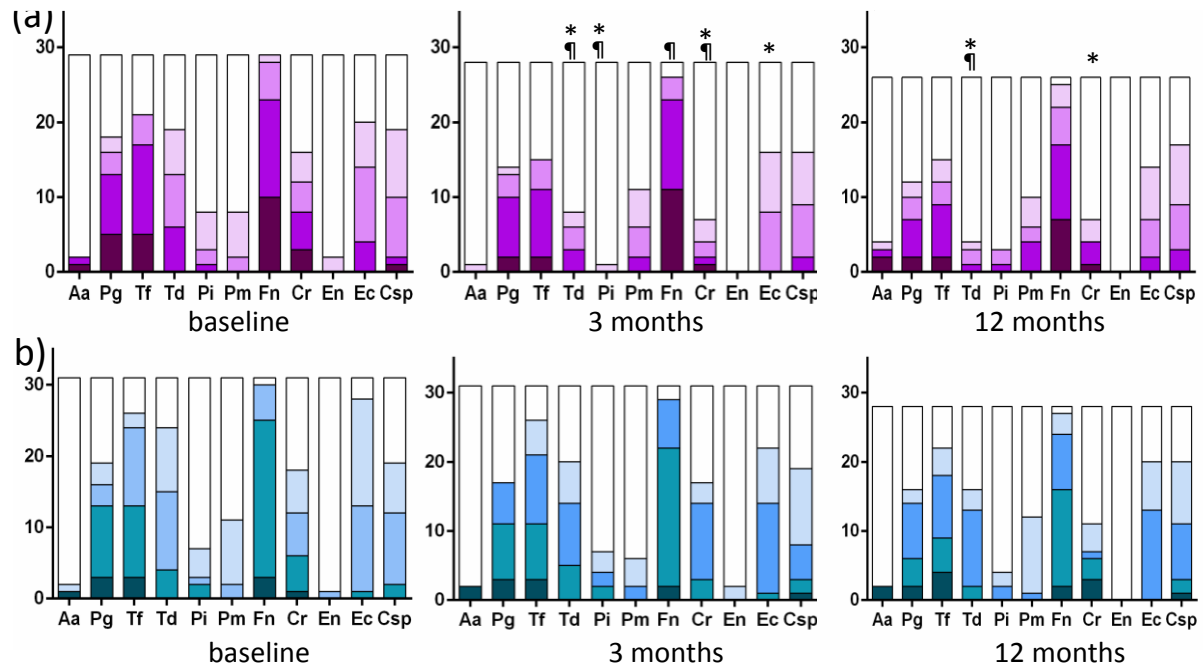


Fig. 2. Semiquantitative loads of periodontopathogenic bacteria (*A. actinomycetemcomitans*, *P. gingivalis*, *T. forsythia*, *T. denticola*, *P. intermedia*, *F. nucleatum/necrophorum*, *C. rectus*, *E. corrodens*, *P. micra*, *E. nodatum*, *Capnocytophaga* sp. at baseline as well as three and 12 months after SRP with adjunctive azithromycin (test) and amoxicillin/ metronidazole (control)

¶p<0.05, ¶¶p<0.01 significant inter-group difference, *p<0.05, **p<0.01 significant difference to baseline

Table 1. Demographic data in the test (azithromycin) and control (amoxicillin/metronidazole) groups at baseline

Variable	Test group (n=29)	Control group (n=31)
Age (years; mean±SD)	54.66 ± 8.89	53.48 ± 8.07
Range (years)	31 – 68	32 - 64
Male (n)	13	18
Female (n)	16	13

SD – standard deviation; n – number

Table 2 Clinical variables (median, 5 and 95 percentile) at baseline, after three and 12 months incl. differences (diff.) and statistical analysis in the test (azithromycin) and control (amoxicillin/metronidazole) groups

N _{test group} =29 N _{control group} = 31	Baseline	3 months	12 months	Difference 3 months - baseline	Difference 12 months - baseline
BOP (%)					
Test group	45.0 (24.0, 63.5)	15.0 (11.0, 25.0) ^{***}	13.0 (10.0, 19.0) ^{***, ¶¶}	29.0 (8.5, 49.0)	30.0 (10.5, 50.5) ^{¶¶}
Control group	37.0 (30.6, 65.0)	15.0 (10.2, 21.0) ^{***}	15.0 (10.6, 21.2) ^{***}	23.0 (14.2, 48.0)	22.0 (16.0, 44.8)
GI (%)					
Test group	44.0 (26.5, 65.0)	21.0 (18.0, 25.5) ^{***}	20.0 (16.0, 22.5) ^{***}	24.0 (5.0, 45.0)	26.0 (6.0, 44.5)
Control group	41.0 (33.8, 64.4)	23.0 (17.6, 27.8) ^{***}	20.0 (16.6, 25.2) ^{***}	18.0 (10.0, 43.8)	21.0 (13.8, 42.2)
Median PD (mm)					
Test group	4.07 (3.72, 4.40)	2.88 (2.43, 3.32) ^{***}	2.70 (2.24, 3.24) ^{***}	1.20 (0.85, 1.58)	1.50 (1.08, 2.67) ^{¶¶}
Control group	4.05 (3.43, 4.69)	2.90 (2.57, 3.45) ^{***}	2.75 (2.39, 3.33) ^{***}	1.13 (0.82, 1.39)	1.28 (0.91, 1.62)
Median AL (mm)					
Test group	4.34 (3.86, 5.56)	3.20 (2.71, 4.31) ^{***, ¶¶}	3.04 (2.55, 4.31) ^{***, ¶¶}	1.11 (0.72, 1.49) ^{¶¶}	1.18 (0.87, 1.68) ^{¶¶}
Control group	4.33 (3.82, 6.41)	3.41 (2.98, 5.28) ^{***}	3.30 (2.78, 5.04) ^{***}	0.89 (0.62, 1.28)	1.05 (0.72, 2.33)
Sites PD ≥5 mm (n)					
Test group	19.0 (5.0, 51.0)	0 (0, 16.0) ^{***}	0 (0, 15.5) ^{***}	18.0 (3.5, 45.0)	18.0 (3.5, 45.5)
Control group	21.0 (5.2, 76.8)	0 (0, 13.2) ^{***}	0 (0, 9.6) ^{***}	21.0 (3.2, 63.6)	21.0 (3.2, 67.8)
Median PD in sites PD ≥5 mm at baseline (mm)					
Test group	5.14 (5.00, 5.97)	3.56 (3.02, 4.48) ^{***}	3.50 (2.75, 4.48) ^{***}	1.62 (1.12, 2.08)	1.81 (1.31, 2.71)
Control group	5.21 (5.00, 6.23)	3.67 (3.34, 4.46) ^{***}	3.44 (3.05, 4.35) ^{***}	1.51 (1.08, 2.30)	1.76 (1.19, 2.56)
Sites AL ≥5 mm (n)					
Test group	45.0 (16.5, 108.5)	6.0 (0, 57.0) ^{***, ¶¶}	6.0 (0, 55.5) ^{***, ¶¶}	33.0 (16.5, 63.0)	34.0 (16.5, 64.5)
Control group	50.0 (21.4, 149.0)	9.0 (3.0, 106.0) ^{***}	9.0 (2.0, 97.6) ^{***}	29.0 (17.8, 64.2)	34.0 (17.8, 76.2)
Median AL in sites AL ≥5 mm at baseline (mm)					
Test group	5.29 (4.63, 6.21) [¶]	3.90 (3.36, 5.05) ^{***, ¶¶}	3.78 (3.24, 4.95) ^{***, ¶¶}	1.34 (0.92, 1.71) ^{¶¶}	1.45 (0.98, 1.89)
Control group	5.48 (5.07, 6.68)	4.21 (3.74, 5.53)	4.02 (3.46, 5.52) ^{***}	1.15 (0.76, 1.56)	1.36 (0.74, 2.86)

Wilcoxon' signed rank test for paired samples: *p<0.05, **p<0.01, ***p<0.001, each compared with baseline

Mann Whitney test between the groups: ¶p<0.05, ¶¶<0.01, ¶¶¶<0.001

n –number; BOP – bleeding on probing; GI – gingival index; PD – probing depth; AL – attachment level

Table 3 Biomarkers (median, 5 and 95 percentile) in the test (azithromycin) and control (amoxicillin/metronidazole) groups at baseline, after 14 days as well as three and 12 months

	Baseline	14 d	3 months	12 months
$N_{\text{test group}}=29$				
$N_{\text{control group}}= 31$				
MMP-8 (ng/site)				
Test group	12.33 (2.41, 38.93)	9.35 (0.97, 22.65)	11.72 (2.22, 31.82)	6.97 (0.52, 32.40)
Control group	10.40 (1.41, 33.85)	7.45 (3.43, 31.83)	11.85 (2.52, 33.72)	8.46 (3.30, 25.39)
IL-1 β (pg/site)				
Test group	31.70 (3.06, 287.86)	17.18 (2.18, 155.07)*	48.48 (2.50, 279.80)	18.52 (1.62, 496.36)
Control group	23.67 (4.65, 152.25)	23.23 (1.69, 568.60)	33.62 (2.63, 257.46)	31.04 (2.51, 248.95)

Wilcoxon' signed rank test for paired samples:

*p<0.05 compared with baseline

Table 4 Numbers (% per group) of the positive results of major periodontopathogenic bacteria (*Aggregatibacter actinomycetemcomitans*, *Porphyromonas gingivalis*, *Tannerella forsythia*, *Treponema denticola*) and of the 11 analyzed species (in addition *Prevotella intermedia*, *Parvimonas micra*, *Fusobacterium nucleatum / necrophorum*, *Campylobacter rectus*, *Eubacterium nodatum*, *Eikenella corrodens*, *Capnocytophaga* sp. in the test (azithromycin) and control (amoxicillin/metronidazole) groups at baseline as well as three and 12 months after SRP with adjunctive azithromycin (test) and with amoxicillin/ metronidazole (control) incl. statistics (p values)

	Baseline	3 months	12 months	All time-points (p)	3 months – baseline (p)	12 months – baseline (p)
Major periodontopathogens						
Test group (n=29)						
No detection	4 (13.8)	9 (31.0)	9 (31.0)	0.028	0.044	0.039
1 species	5 (17.2)	7 (24.1)	7 (24.1)			
2 species	6 (20.7)	6 (20.7)	8 (27.6)			
3 species	13 (44.8)	7 (24.1)	4 (13.8)			
4 species	1 (3.4)	0	1 (3.4)			
Control group (n=31)						
No detection	1 (3.2)	5 (16.1)	6 (19.4)	0.412	0.528	0.220
1 species	7 (22.6)	2 (6.5)	4 (12.9)			
2 species	5 (16.1)	10 (32.3)	8 (25.8)			
3 species	18 (58.1)	13 (41.9)	11 (35.5)			
4 species	0	1 (3.2)	2 (6.5)			
Test vs. control (p)	0.470	0.023	0.047			
Analyzed 11 periodontopathogens						
Test group (n=29)						
No detection	0	2 (6.9)	1 (3.4)	0.015	0.016	0.047
1-2 species	2 (6.9)	4 (13.8)	4 (13.8)			
3-4 species	7 (24.1)	10 (34.5)	12 (41.4)			
5-6 species	11 (37.9)	10 (34.5)	8 (27.6)			
≥7 species	9 (31.0)	3 (10.3)	4 (13.8)			
Control group (n=31)						

	No detection	0	1 (3.2)	1	0	0.364	0.183	0.229
	1-2 species	1 (3.2)	1 (3.2)	1	2 (6.5)			
	3-4 species	8 (25.8)	9 (29.0)	9	8 (25.8)			
	5-6 species	8 (25.8)	9 (29.0)	9	10 (32.3)			
	≥7 species	14 (45.2)	11 (35.5)	11	11 (35.5)			
Test vs. control (p)		0.520	0.024		0.039			