



LUND UNIVERSITY

Human induced pluripotent stem cells in Parkinson's disease: A novel cell source of cell therapy and disease modeling.

Li, Wen; Chen, Shengdi; Li, Jia-Yi

Published in:
Progress in Neurobiology

DOI:
[10.1016/j.pneurobio.2015.09.009](https://doi.org/10.1016/j.pneurobio.2015.09.009)

2015

Document Version:
Peer reviewed version (aka post-print)

[Link to publication](#)

Citation for published version (APA):
Li, W., Chen, S., & Li, J-Y. (2015). Human induced pluripotent stem cells in Parkinson's disease: A novel cell source of cell therapy and disease modeling. *Progress in Neurobiology*, 134(sep 25), 161-177.
<https://doi.org/10.1016/j.pneurobio.2015.09.009>

Total number of authors:
3

General rights

Unless other specific re-use rights are stated the following general rights apply:
Copyright and moral rights for the publications made accessible in the public portal are retained by the authors and/or other copyright owners and it is a condition of accessing publications that users recognise and abide by the legal requirements associated with these rights.

- Users may download and print one copy of any publication from the public portal for the purpose of private study or research.
- You may not further distribute the material or use it for any profit-making activity or commercial gain
- You may freely distribute the URL identifying the publication in the public portal

Read more about Creative commons licenses: <https://creativecommons.org/licenses/>

Take down policy

If you believe that this document breaches copyright please contact us providing details, and we will remove access to the work immediately and investigate your claim.

LUND UNIVERSITY

PO Box 117
221 00 Lund
+46 46-222 00 00

Human induced pluripotent stem cells in Parkinson's disease: a novel cell source of cell therapy and disease modeling

Wen Li ^{1,3}, Shengdi Chen ^{1,*}, Jia-Yi Li ^{2,3*}

^{1.} Department of Neurology and Institute of Neurology, Ruijin Hospital, Shanghai Jiao Tong University School of Medicine, No. 197, Rui Jin Er Road, Shanghai 200025, China

^{2.} Institute of Neuroscience, College of Life and Health Sciences, Northeastern University, Shenyang, P.R. China

^{3.} Neural Plasticity and Repair Unit, Wallenberg Neuroscience Center, Lund University, BMC A10, 221 84 Lund, Sweden

* Corresponding authors:

Email address: jia-yi.li@med.lu.se; jiayili@mail.neu.edu.cn

Email address: chen_sd@medmail.com.cn

Abbreviation of words:

AA: Ascorbic Acid

ALS: Amyotrophic lateral sclerosis

BDNF: Brain derived neurotropic factor

BMP: Bone morphogenetic protein

DNMT: DNA methyltransferase

EB: Embryoid body

EBNA1: Epstein-Barr nuclear antigen-1

ERK: Extracellular signal-regulated kinase

FGF8: Fibroblast growth factor 8

FP: Floor plate

GDNF: Glia cell derived neurotropic factor

GSK-3 β : Glycogen synthase kinase-3 β

hESCs: Human embryonic stem cells

hiPSCs: Human induced pluripotent stem cells

hTERT: Human telomerase

Klf4: Kruppel-like factor 4

LIF: Leukemia inhibitory factor

Oct4: Octamer-binding transcription factor 4

PD: Parkinson's disease

RSMADs: Receptor-regulated mothers against decapentaplegic+ *Caenorhabditis elegans* protein

SAHA: Suberoylanilide hydroxamic acid

SMA: Spinal muscular atrophies

SHH: Sonic hedgehog

SIP1: SMAD-interacting protein 1

Sox2: SRY (sex determining region Y)-box 2

TGF β : Transforming growth factor beta

TSA: Trichostatin A

TuJ1: Neuron-specific class III beta-tubulin

VPA: Valproic acid

Wnt: Wingless integration 1

DHA: Docosahexaenoic acid

MPTP: 1-methyl-4-phenyl-1,2,3,6-tetrahydropyridine

AD: Alzheimer's disease

Abstract

Human induced pluripotent stem cells (hiPSCs) and human embryonic stem cells (hESCs) are two novel cell sources for studying neurodegenerative diseases. Dopaminergic neurons derived from hiPSCs/hESCs have been implicated to be very useful in Parkinson's disease (PD) research, including cell replacement therapy, disease modeling and drug screening. Recently, great efforts have been made to improve the application of hiPSCs/hESCs in PD research. Considerable advances have been made in recent years, including advanced reprogramming strategies without the use of viruses or using fewer transcriptional factors, optimized methods for generating highly homogeneous neural progenitors with a larger proportion of mature dopaminergic neurons and better survival and integration after transplantation. Here we outline the progress that has been made in these aspects in recent years, particularly during the last year, and also discuss existing issues that need to be addressed.

Key words: Induced pluripotent stem cells, Parkinson's disease, reprogramming, dopaminergic differentiation, neural transplantation, disease modeling

Table of Contents

1	INTRODUCTION	6
1.1	CLINICAL EVIDENCE OF NEURAL TRANSPLANTATION IN PD PATIENTS	6
1.2	HUMAN EMBRYONIC STEM CELLS AND INDUCED PLURIPOTENT STEM CELLS IN CELL REPLACEMENT THERAPY AND DISEASE MECHANISMS	7
2	GENERATIONS OF PLURIPOTENT STEM CELLS – A ROADMAP	8
2.1	THE ORIGINAL PROTOCOL – VIRAL VECTOR APPROACH	8
2.2	USING FEWER, DEFINED TRANSCRIPTIONAL FACTORS	10
2.3	SMALL MOLECULES IMPROVE THE EFFICIENCY FOR REPROGRAMMING	11
2.4	INTEGRATION FREE REPROGRAMMING	13
2.5	XENO-FREE AND FEEDER FREE CULTURING FOR FUTURE CLINICAL APPLICATION	15
3	SUFFICIENT DOPAMINERGIC DIFFERENTIATION:	16
3.1	SUPPLEMENTATION OF COMPOUNDS AND GROWTH FACTORS PROMOTES DOPAMINERGIC DIFFERENTIATION	17
3.2	SIGNALING PATHWAYS INVOLVED IN DOPAMINERGIC CELL DIFFERENTIATION	17
3.2.1	<i>Wnt signaling pathway</i>	17
3.2.2	<i>BMP/SMAD signaling inhibition:</i>	18
3.2.3	<i>SHH pathway and FGF8:</i>	19
3.3	A SYMPHONY OF SIGNALING PATHWAYS	20
3.4	APPLICATION OF FACS SORTING TO INCREASE DOPAMINERGIC NEURON POPULATION AND PURITY	22
4	APPLICATION OF INTRA-CEREBRAL TRANSPLANTATION	24
4.1	SURVIVAL OF TRANSPLANTED CELLS VERSUS PHENOTYPIC STABILITY	24
4.2	PROMOTION OF INTEGRATION OF TRANSPLANTED NEURONS WITH THE HOST BRAIN	24
5	INDUCED PLURIPOTENT STEM CELLS: BEYOND CELL THERAPY	27
5.1	UNIQUE MODELS TO STUDY DISEASE MECHANISMS	27
5.2	DRUG DEVELOPMENT WITH iPSCs	33
5.4	ESTABLISHMENT OF BIOBANK SYSTEM FOR hiPSCs-- A DIRECT COMPARISON BETWEEN AUTOLOGOUS AND ALLOGENEIC TRANSPLANTATION	36
5.5	FUTURE CHALLENGES FOR hiPSC/hESC APPLICATION	37
6	PERSPECTIVE	39
7	REFERENCES	40

1 Introduction

1.1 Clinical evidence of neural transplantation in PD patients

Parkinson's disease (PD) is the most common movement disorder in man. Loss of dopaminergic neurons in the substantia nigra pars compacta is the pathological hallmark of the disease. Therapies for PD have been mainly restricted to the relief of symptoms and there is still no effective and reliable model for studying the mechanisms of the disease.

Since the 1980's, several open-labeled trials have been performed to transplant human fetal dopaminergic neurons into the putamen and/or caudate nucleus as a replacement therapy to restore dopaminergic transmission^{1,2}. Concrete evidence shows that neural transplants survive and become functional and integrated with the host brain neurons^{3,4}. Fluoro-Dopa PET scans demonstrate that grafted neurons can actively take up dopamine, reflecting functional neurons in the transplant; the patients show benefits in general performance, reduced rigidity and increased speed of movement^{5,6}. Post mortem studies of the brain tissues that received neural transplantation demonstrate the long-term survival of dopaminergic neurons, even longer than two decades post-operation (Fig 1). These open-labeled clinical trials show that, when successful, dopaminergic neuron transplantation can be beneficial and promising to PD patients. However, two NIH-sponsored double-blind placebo trials failed to reach the primary outcome, i.e. a significant benefit to the patients^{7,8}. Furthermore, a considerable number of transplanted patients developed clear adverse effects – graft-induced dyskinesia. After intensive debates on clinical trial designs of cell replacement therapy, including patient selection, graft tissue preparation and processing and optimization of surgical procedures, a new clinical trial (TRANSEURO) was established and is currently ongoing cross-continently in multi-research and clinical centers⁹. Success of this trial will have a major impact on neural transplantation with fetal dopaminergic tissues, and also with human embryonic stem cell (hESC)- and human induced pluripotent stem cell (hiPSC)-derived dopaminergic neurons in future.

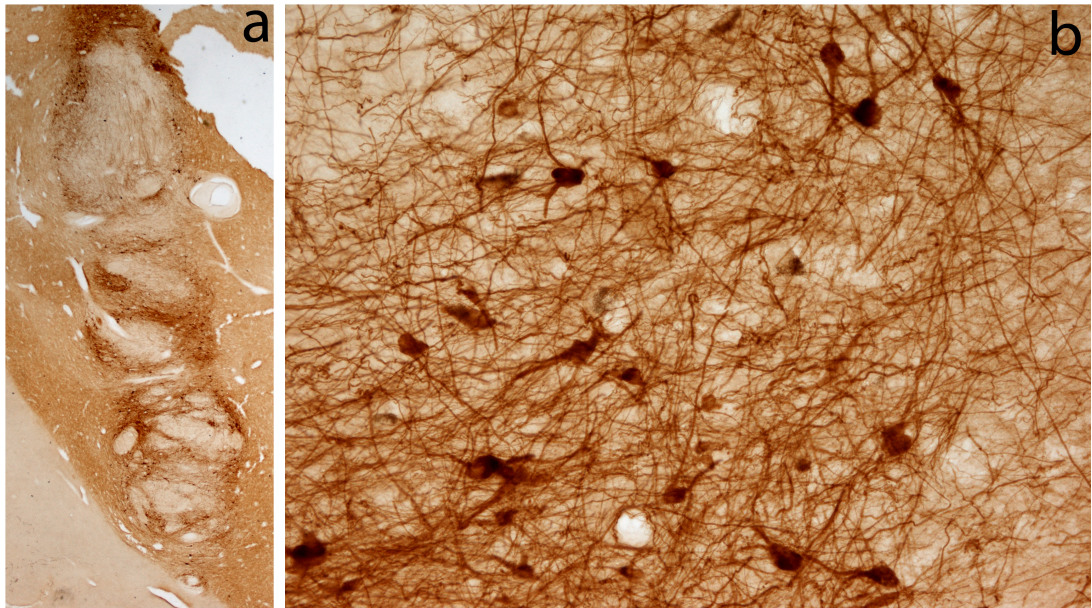


Fig.1. Microscope images, showing long-term survival of dopaminergic neurons 16 years after transplantation into the putamen of a PD patient. The neurons are labeled with an antibody against tyrosine hydroxylase, the key enzyme of dopamine synthesis. The low power image (a) depicts the grafts in the putamen, while the high power image (b) shows that the surviving cells exist in the periphery of the graft with good morphology of dopaminergic neurons and also exhibit extensive dopaminergic fiber networks within and outside the graft.

1.2 Human embryonic stem cells and induced pluripotent stem cells in cell replacement therapy and disease mechanisms

Embryonic stem cells (ESCs) provide hope for regenerative medicine, and have been proposed as a source of donor cells for replacement therapy in PD. ESCs are pluripotent; they have a wide differentiation potential to generate tissues and cells derived from all three embryonic germ layers. Mouse ESCs can be differentiated into dopaminergic neurons^{10, 11} with efficient survival rates and can give rise to functional recovery after transplantation into the brains of rodent models of PD^{12, 13}. However, it has been difficult and complicated to generate high yields of dopaminergic neurons from hESCs with various differentiation protocols. Furthermore, following intra-cerebral transplantation, the survival of transplants and functional effects have not been satisfactory, even with reports of tumor or teratoma formation^{10, 14}. HiPSCs¹⁵ are promising potential cell sources for studying neurodegenerative diseases and may, in the future, be used for cell therapy as well. From the

perspective of the differentiation potential, hiPSCs encounter similar problems to hESCs. The application of hiPSCs/hESCs in PD research has been substantially limited by the lack of effective protocols for differentiation and transplantation. A series of studies have been undertaken to optimize protocols of hiPSC/hESC differentiation and transplantation; although improvements have been made in the last few years, many problems still exist. Recently, a breakthrough of differentiating hESCs *in vitro* broke the deadlock^{16, 17}. Here we will discuss advances that have been made in terms of dopaminergic conversion from hiPSCs/hESCs and transplantation studies in recent years and summarize the state-of-the-art development and prospects for effective and safe use of hiPSCs/hESCs for PD therapy in the future. We will keep to the following outline: hiPSCs/hESCs → neural progenitors → mature dopaminergic neurons → transplantation, and specify the progress that has been made in each of these aspects, including advanced reprogramming strategies without the use of viruses or using fewer transcriptional factors¹⁸⁻²¹, the optimal methods for generating highly homogeneous neural progenitors and a greater proportion of mature dopaminergic neurons^{17, 22-26}. Furthermore, we will focus on the survival, integration and safety issues regarding teratoma/tumor formation after intra-cerebral transplantation. This review will provide a timely highlight of recent advances and a better understanding of the use of hiPSCs/hESCs in cell therapy and in disease mechanism studies of PD for both clinical neurologists and researchers.

2 Generations of pluripotent stem cells – a roadmap

2.1 The original protocol – Viral vector approach

Traditionally, reprogramming of somatic cells to pluripotency has been achieved by two different methods. Firstly, nuclear transfer — transplanting nuclei from differentiated somatic cells into oocytes. Secondly, cell fusion — involving fusion of two or more cells into one, which reveals the fact that silent genes in differentiated cells can be activated by certain regulators²⁷.

In 2006, Yamanaka and co-workers showed that somatic cells can be reprogrammed into an

embryonic-like state by introducing 4 transcriptional factors, Octamer-binding transcription factor 4 (Oct4), SRY (sex determining region Y)-box 2 (Sox2), C-myc and Kruppel-like factor 4 (Klf4), into embryonic mouse fibroblasts. These reprogrammed cells were designated as induced pluripotent stem cells (iPSCs), which possess characteristics of typical embryonic stem cells²⁸. Since then, a lot of effort has been put into improving approaches to generate iPSCs. For example, in addition to the four factors mentioned previously, Thomson and colleagues reprogrammed human fibroblasts with a distinct set of transcription factors comprising Oct4, Sox2, NANOG, and LIN28 (OSNL)²⁹.

However, most of the methods that have been developed at that time involve the use of viruses, either retrovirus or lentivirus, through which reprogramming genes are integrated into the host genome³⁰. The application of viruses and oncogenes into the genome, however, gives rise to safety concerns and limits the potential clinical use of iPSC-derived cells in the future.

Plath and colleagues recently provided further insight into the roles of the four reprogramming factors³¹. They found that ectopic expression of C-myc promotes the most prominent ESC-like expression pattern among the four factors when expressed individually in fibroblasts, and that C-myc functions predominantly prior to the induction of pluripotent regulators during reprogramming. At the final phase of reprogramming, Oct4, Sox2, and Klf4 re-establish an ESC-like association with co-bound target genes and activate other genes of pluripotency. In contrast, partially reprogrammed cells lack similar co-binding activities and may reflect incomplete epigenetic changes and/or the requirement for additional induced factors to cooperatively bind target genes with Oct4, Sox2, and Klf4. However, there is also discussion regarding the role of myc in the use of direct reprogramming. Although addition of c-myc strongly promoted the efficiency of reprogramming, this could increase the risks of tumor formation^{32, 33}. C-myc reactivation induces tumor formation due to its transformation activity. Nakagawa *et al* found that another isotype of Myc gene, L-myc, and different mutant forms of C-myc (W136E and dN2) possess a larger tendency to reprogramming and at the same time lower risk of tumor formation compared to C-myc³⁴.

Increasing evidence shows that generation of iPSCs can be achieved by using fewer, defined factors, applying chemicals or small molecules to improve the efficiency and stability of reprogramming and developing non-integrated strategies to reprogram somatic cells. So, we will discuss the progress that has been made in these aspects below.

2.2 *Using fewer, defined transcriptional factors*

Originally, Yamanaka and his co-workers used four different factors: Oct4, Sox2, C-myc and Klf4²⁸. Researchers first began to optimize the protocol for reprogramming by reducing the number of factors transduced with viruses. One of the main problems with these traditional reprogramming methods is the use of exogenous transcription factors. Viral-dependent transduction of these factors into cells causes permanent integration of transgenes into the human genome. This increases the risk of reactivation of viral genes or even alterations of the human genome later on. Furthermore, two of the four factors, C-myc and Klf4, are oncogenic³³ and two (Klf4 and Oct4) can cause dysplasia^{35, 36}. Reducing the number of factors, especially omitting the oncogenic genes used in reprogramming, will hopefully decrease the risk of mutagenesis and also gives hope to the avoidance of using transcription factors in the future. Yamanaka's group made the first breakthrough in 2008; they demonstrated that iPSCs can be transduced by introducing only three factors, eliminating the use of C-myc in both human and mouse fibroblasts, with a longer duration of puromycin selection³⁷. Then, Li *et al.* removed Sox2 from the cocktail in 2009³⁸, using a GSK-3 inhibitor as a replacement for virus-induced factors. Huangfu *et al.* reported the elimination of two oncogenic factors, Klf4 and C-myc³⁹. Their work shows that valproic acid (VPA), a histone deacetylase inhibitor, can help to reprogram primary human fibroblasts with only two factors, Oct4 and Sox2. By using a different type of cell, dermal papilla cells rather than fibroblasts, which are a type of skin cell related to hair morphogenesis and regeneration⁴⁰, Michael *et al.* generated iPSCs using only 2 factors, Oct4 and Klf4, with a much higher efficiency and a faster process. They continued improving this protocol by using only Oct4 with neural stem cells later^{21, 41, 42}.

2.3 *Small molecules improve the efficiency for reprogramming*

In addition to improving reprogramming by reducing the number of transgenes, researchers have found several chemical compounds and small biologically effective molecules that can facilitate the reprogramming procedure.

Reprogramming somatic cells into an embryonic status has been proven possible, however, the main drawback of low efficiency remains. Several compounds and molecules are demonstrated to have an enhanced effect on the reprogramming procedure. 1) Epigenetic reprogramming: SV40 large T antigen (SV40 LT) and the catalytic subunit of the human telomerase (hTERT) have been shown to be able to increase the reprogramming efficiency of human fibroblasts without any genomic integration^{43, 44}. The fact that induction of DNA methyltransferase (DNMT) improves reprogramming reveals a role of epigenetic effects to cell reprogramming⁴⁵⁻⁴⁷. Addition of the DNA methyltransferase inhibitor AZA increases reprogramming efficiency 12-fold and also increases colony number 4-fold⁴⁵. Both of these findings imply that DNA methylation plays an important role in epigenetic reprogramming⁴⁶⁻⁴⁸. 2) microRNA: as an epigenetic modification, manipulating microRNA can enhance the efficiency of reprogramming as well. For example, miR-291-3p, miR-294 and miR-295, the miR 290 cluster, which are specifically present in ESCs, increase the efficiency of reprogramming without the presence of C-myc⁴⁹. miR-302 has a similar effect⁵⁰. 3) p53: knockdown of p53 has also been shown to enhance the generation efficiency of iPSCs from somatic cells⁵¹⁻⁵⁵. Recent studies have revealed interacting effects of microRNAs and p53⁵⁴. miR138 promotes reprogramming by suppressing p53 expression by binding to the 3' untranslated region (UTR) of p53) Histone deacetylase (HDAC) inhibitors: Another very important chemical family, which can enhance reprogramming, are the histone deacetylase (HDAC) inhibitors. The most commonly found members are valproic acid (VPA), trichostatin A (TSA), and suberoylanilide hydroxamic acid (SAHA). All three are demonstrated to have enhancing effects on the reprogramming process, either by increasing the efficiency by up to 100-fold or by decreasing the

number of transcriptional factors needed^{48, 56}. Besides the chemicals described above, some signaling pathways are believed to participate in the reprogramming process as well. Traditionally, leukemia inhibitory factor (LIF) and bone morphogenetic protein (BMP) pathways have been shown to have functions in maintaining the ESC in a pluripotent state. These factors are used in ESC maintenance *in vitro*^{57, 58}. Likewise, the inhibition of Extracellular signal-regulated kinase (ERK) and GSK-3 pathways can either maintain the self-renewal state of ESCs or help to induce the reprogramming^{58, 59}. Similar effects have been found in the Transforming growth factor beta (TGF β) and the Wingless integration 1 (Wnt) pathways⁶⁰⁻⁶². Here we summarize different factors that have been tried in iPSCs programming (Table 1).

Table 1: Small molecules that improve the efficiency for reprogramming

	Factors	Function	Trans-factors	Cell type	Efficiency and speed	Ref
Epigenetic reprogramming	SV40 LT	Supplementing factors	<i>Oct4/Sox2/NANOG/LIN28</i>	Human fibroblasts	1-2 weeks faster, enhanced efficiency by 23- to 70-fold	⁴³
	hTERT	Transcriptase	OSKM	Human fibroblasts	~3-fold	⁴⁴
	RG108	DNA methyltransferase inhibitor	OK	Mouse fibroblasts	BIX-01294 + RG108 enhances efficiency ~30 times	⁶³
	BIX-01294	histone methyl- inhibitor	OK	Mouse fibroblast	5 fold	⁶³
	DNMT	Inhibition of DNA methyltransferase	OSKM	Mouse fibroblasts	promotes full reprogramming	^{45, 56}
	BayK8644	L-type calcium channel agonist	OK	Mouse fibroblasts	BIX-01294 + BayK8644 enhances efficiency ~15 times	⁶³
Histone deacetylase (HDAC)	Butyrate	histone deacetylase inhibitor	OSKM	MEF	A maximum 7-fold increase	⁶⁴
	AZA	DNA methyltransferase inhibitor	OSKM	Mouse fibroblasts	~10-fold increase in efficiency	⁴⁸
	VPA	histone deacetylase inhibitor	OSKM	Mouse fibroblasts	greater than 100-fold increase in efficiency	⁴⁸
	TSA	histone deacetylase inhibitor	OSKM	Mouse fibroblasts	~15-fold increase in efficiency	⁴⁸
Signaling pathways	Wnt3a	Cell signaling molecule	OSK	Mouse fibroblasts	~20-fold increase in efficiency	⁶¹
	Sodium butyrate SB431542 PD0325901	Inhibition TGF β /MAPK/ERK Histone deacetylase inhibitor	OSKM	Human fibroblasts	As high as a ~93% reprogramming efficiency	⁶⁵
	RAR- γ	RA receptors (RARs) or RA agonists	OSKM	Mouse+ Human fibroblasts	4 day induction Efficiency: 80% of reprogramming	⁶⁶
P53 gene and miRNA	p53 siRNA,	Maintain self-renewal state	OSKM	Human fibroblast	~100-fold increase in efficiency	⁶⁷
	Tranilast	Activation of AhR aryl hydrocarbon receptor (AhR) promoting miR-302 expression	OSK	Mouse Embryonic Fibroblast (MEF) Cells	7 -old	⁶⁸
	miR-290 cluster miR-302d	Substitutes for cMyc	OSK	Mouse fibroblasts	Increasing efficiency from 0.01–0.05% to 0.1–0.3%	^{50, 62}

Others	Depletion of Mbd3	Restraints reactivation of OSKM downstream target genes	OSKM	Mouse+ Human fibroblasts	Deterministic and synchronized iPS cell reprogramming (near 100% efficiency within seven days)	⁶⁹
	Hypoxia	Maintain self-renewal state as an environment factor	Oct3/4, Sox2, Klf4, +/- c-Myc	Mouse+ Human fibroblasts	Mouse: increased 7.4-fold increased 20-fold without myc Human: around 2- to 3-fold	⁷⁰
	RepSox	Replacement of SOX2	OKM	Mouse fibroblasts	Show colonies, Short to one day treatment	^{71, 72}

2.4 Integration free reprogramming

One of the safety concerns in using iPSCs in clinical regenerative medicine is the use of viruses. Application of retroviruses and lentiviruses causes genomic integration of the virus gene and transgene, raising the risk of tumorigenicity and also reactivation of the virus gene⁷³. To solve this problem, a great deal of effort has been made to find potential alternatives as carriers to deliver the transgene into host cells without genomic integration. In 2008, Hochedlinger *et al.* generated functional iPSCs without the use of integrating viruses by employing adenoviruses either alone or in combination with an inducible transgene⁷⁴. The use of adenovirus makes it possible to avoid host genome integration of the transgenes. Another safer virus for generating non-integration iPSCs is the Sendai virus, which was reported by Hasegawa's lab in 2009⁷⁵. The Sendai virus is a negative-sense single-stranded RNA in the cytoplasm of infected cells, which does not go through a DNA phase or integrate into the host genome. These viruses show highly efficient introduction of foreign genes⁷⁶. Later, Yamanaka's group made additional achievements by using two complementary DNAs (cDNAs) to transduce the four transcriptional factors into mouse fibroblasts⁷³. They also used retrovirus and adenovirus, but only to test the constructs of plasmids; the final transfection was performed without any virus. They were able to generate iPSCs without any gene integration through optimization of the transfection protocol. However, drawbacks of the integration-free methods include slower procedures and lower efficiency of reprogramming⁷³. In 2009, a study found a solution to this efficiency problem. One single multi-protein expression vector, which comprises the coding sequences of C-myc, Klf4, Oct4 and Sox2, linked with 2A peptides, is used as a transporter. The 2A peptide is a region of the sequence of the foot and mouth disease virus (F2A), which has been used as a multi-protein vector in cell transient reprogramming⁷⁷. In this study,

pCAG2LMKOSimO, which has C-myc, Klf4, Oct4 and Sox2 coding regions linked with 2A peptide sequences driven by a CAG enhancer/promoter, was constructed. The multi-protein expression of this vector resulted in a robust level of C-myc, Klf4, Oct4 and Sox2, which then resulted in highly efficient generation of functional iPSCs, as demonstrated by *in vitro* differentiation assays and formation of adult chimeric mice. This method was then further validated in both mouse and human cells. Most importantly, they managed to remove the transgene once reprogramming was achieved, using a transient Cre transfection⁷⁸⁻⁸⁰. A similar method was reported in 2009 for generating a PD-specific iPSC line using loxP-flanked vectors followed by Cre-recombinase-mediated excision⁸¹. However, while all of these methods are able to eliminate transgenes from host cells, the vector constructs they use still remain in the host cells; these genes remain potential risk factors for mutagenesis in the future. In 2009, Thomson and co-workers reported the first study that enabled the excision of both transgene and vector sequences. Using an oriP/ Epstein-Barr nuclear antigen-1 (EBNA1)-based episomal vector, both transgene and vector gene could be easily removed from the host cells when cultured without drug selection⁸².

Another important milestone of cell reprogramming was the use of protein-based transduction. Without the introduction of any transgenes or nucleotide vectors, researchers used proteins derived from ESCs as pluripotency carriers. This system eliminates the potential risks associated with the use of genetic material and/or potentially mutagenic molecules. By fusing the reprogramming proteins to a penetrating protein, it enables the transcriptional proteins to enter the host cells^{20, 83}. Shortly after this, Cho *et al.* reported a method of using ESCs-derived extract proteins, transferred by streptolysin O-mediated reversible permeabilization – an already commercially available penetration protein⁸⁴. Unfortunately, the use of protein based reprogramming results in a lower efficiency.

All of the studies above managed to either reduce or eliminate the use of viral vectors from the cell reprogramming procedure, which lowers the concern about host genome integration and later risk of mutagenic changes. Overcoming these obstacles will improve the possibility of using iPSCs in

clinical regenerative medicine. However, the reprogramming protocol still requires further optimization, particularly in improving the relatively low efficiency as compared to viral vector methods⁸⁴.

2.5 *Xeno-free and feeder free culturing for future clinical application*

In addition to the viral introduction during reprogramming, another obstacle that prevents the clinical application of hiPSCs is the use of xeno biotic materials and animal origin feeder cells⁸⁵. The use of feeder cells and xenogeneic materials will result in contamination of animal source pathogens and may trigger immune reactions when applied for transplantation therapy⁸⁶. In 2005, researchers observed animal source immune active forms of NeuG5 in hESCs after the use of animal derived materials during differentiation⁸⁶. Therefore, the use of xeno-free and feeder-free methods is definitely necessary for the clinical application of hiPSCs. Several steps in the reprogramming and proliferation of hiPSCs are involved with animal-based or undefined factors⁸⁷. 1) Cell surface: in order to help the establishment of clones during reprogramming and increase efficiency, generations of hiPSCs often include feeder cells or a matrigel coated cell surface⁸⁸. The most common used feeder cells are mouse embryonic fibroblasts (MEF). Immortalized human skin fibroblasts have been shown to support the generation and expansion of hiPSCs, which is a promising source of feeder cells in the future⁸⁹. Extracellular matrix such as matrigel and laminin are also suggested to be useful material for surface of reprogramming. However, there is evidence showing the extracellular matrix may decrease the pluripotency of induced hiPSCs and increase the risk of mutation⁹⁰. The components of this matrix often include animal derived materials, which will raise the safety issue later on. 2) Culture media: fetal bovine serum and modified version of serum replacement have been widely used in the reprogramming and expansion process. Other factors such as trypsin and dispase for dissociating cells are also used in the generation of hiPSCs. Xeno-free media contain human plasma based serum replacement and also define all the compartments in the medium. This is widely used to develop xeno-free generation of hiPSCs. Rajala *et al* used xeno-free medium (RegES)

composed of a knockout-Dulbecco's modified Eagle's medium. They generate hiPSCs, which maintain pluripotency through culture and express surface markers. They used human fibroblasts to support the reprogramming process. hiPSCs generated this way can survive and maintain morphology and pluripotency up to 20 passages⁹¹. Rodriguez-piza *et al* used human fibroblasts as both the cell source for reprogramming and as feeder cells. Through culturing in human plasma based xeno-free medium, they generate hiPSCs that express pluripotency markers and can be functionally differentiated⁸⁷. Recently Chou *et al* succeeded in using a human recombinant vitronectine protein substrate surface to support the reprogramming of mononuclear blood cells. Combined with xeno-free culture medium, they generated clinical compliant hiPSCs in a high efficiency⁹².

3 Sufficient dopaminergic differentiation:

Degeneration of dopaminergic neurons in the substantia nigra is the pathological hallmark of PD. Using iPSCs for cell replacement therapy has been considered as a promising approach for the treatment of PD. However, the realization of this potential has been largely hindered by several problems, especially the low efficiency of generating a large quantity and well-defined population of dopaminergic neurons from iPSCs⁹³. Previous discussions regarding differentiation efficiency have focused on the use of non-human feeder cells or genetic modification of stem cells to obtain a high yield of dopaminergic neurons. The use of non-human feeder cells such as murine stromal cells-PA6 and MS5 cells^{14, 94, 95}, can increase differentiation efficiency to a certain extent but also introduces cells of non-human origin into the culture, which will have a negative impact in clinical applications. Modification of the stem cell genome by introducing genes that promote dopaminergic neuron differentiation will give rise to a high yield of TH positive cells. However, this method introduces exogenous transgene and also vector DNA into cells, which may cause unpredictable mutagenic risks in prolonged passages. Hence, it will not be the preferred method in cell replacement therapy⁹⁶⁻⁹⁸.

3.1 *Supplementation of compounds and growth factors promotes dopaminergic differentiation*

Various growth factors and soluble compounds or their combinations have been used to improve neural induction and dopaminergic differentiation. Several different factors have been used to promote these processes, such as Fibroblast growth factor 8 (FGF8), FGF20, Brain derived neurotrophic factor (BDNF), ascorbic acid (AA), Glia cell derived neurotrophic factor (GDNF) and Sonic Hedgehog (SHH)^{14, 94, 99-103}. From the aspect of developmental biology of the brain, in order to generate specific neurons, such as dopaminergic neurons, reminiscent of the neurons *in vivo*, one must mimic the temporal neuronal differentiations with close correlative administration of specific growth/trophic factors in defined dose-dependent manners. However, in many previously published studies, the use of these growth factors has not been based on a good understanding of relative signaling pathways. What's more, these methods often require co-culturing with stromal cells and have a long *in vitro* culture period⁹³. There is still a room for improvement in using these factors for neural induction and dopaminergic differentiation.

In summary, the critical issues in using multiple factors to improve the differentiation efficiency can be simplified as 1) the understanding of how different signaling pathways function and interact in dopaminergic differentiation, and 2) how to achieve a relatively clean, feeder-free and more efficient method of differentiation to facilitate future clinical applications.

3.2 *Signaling pathways involved in dopaminergic cell differentiation*

3.2.1 *Wnt signaling pathway*

Wnts are 350–500 amino acids long secreted proteins, which are involved in diverse cellular functions, such as cell self-renewal, cell proliferation and differentiation, and embryonic patterning^{104, 105}. Abnormality of Wnt signaling can result in diseases such as tumor genesis¹⁰⁴.

Wnts have 19 different isotypes involved in both canonical and non-canonical pathways¹⁰⁶. There is widespread Wnt expression in the central nervous system, which implies the important function of Wnts in neural regulation. Evidence has pointed out that WNTs play a critical role in both early and

late stages of neural development, including neural induction, progenitor proliferation^{107, 108}, anterior and posterior patterning^{109, 110}, neural differentiation, axon guidance, and neural integration and migration^{107, 108, 111-113}. Most importantly, Wnts are crucial for midbrain dopaminergic development. It has been shown that the Wnt family is expressed in developing midbrain, which suggests the role of Wnts in midbrain patterning¹¹⁴. Wnts are expressed in dopaminergic precursor cells. Wnt-1, Wnt-3a and Wnt-5a can all increase the number of TH positive cells, although they may act through different mechanisms. Wnt-3a promotes the proliferation of Nurr1-positive (orphan nuclear receptor-related factor 1) precursor cells while Wnt-1 predominantly increases the TH+ cell percentage, and Wnt-5a increases the mRNA levels of some mature dopaminergic markers such as TH and c-ret, thus increasing the proliferation of both total neuron and TH+ neuron populations. This implies that it increases the neuron number without compromising the dopaminergic proportion¹¹⁵. Several studies have reported examples of Wnts facilitating midbrain differentiation. Indirubin-3-monoxime and kenpaullone, two chemical inhibitors of glycogen synthase kinase Glycogen synthase kinase-3 β (GSK-3 β), increase neuronal differentiation in ventral mesencephalon precursor cultures. GSK-3 β is a main component of the canonical signaling in Wnt. The inhibition of GSK-3 β can stabilize β -catenin protein. It has been found that these two proteins increase both the number and percentage of TH+ cells¹¹⁶. Studies by Arenas's group found that purified Wnt5a and Wnt3a can improve the differentiation into dopaminergic neurons by activating both canonical and non-canonical pathways¹¹⁷. Researchers have also found that secreted Frizzled-related proteins (sFRPs), a family of proteins that modulate Wnt signaling, can regulate development of dopaminergic neurons by activating the Wnt/planar-cell-polarity/Rac1 pathway in dopaminergic cells¹¹⁸.

3.2.2 *BMP/SMAD signaling inhibition:*

Different evidence shows the critical role of SMAD signaling inhibition in dopaminergic neuronal induction. Noggin-cDNA containing a single reading frame encoding a 26kD protein, which inhibits BMP, has a neural induction effect in *Xenopus* embryos¹¹⁹ and possesses a similar function in

mammals.¹²⁰. Likewise, other BMP inhibitors, chordin and Follistatin^{121, 122}, have similar functions. Noggin has also been tested to promote dopaminergic differentiation. In hESC differentiation, it exhibits a better neuro-ectoderm induction and higher yield of dopaminergic neurons in culture^{123, 124}. Furthermore, Noggin has an effect of maintaining long-term neural precursor survival and helps form tumor free integration after transplanting into adult neostriatum¹²⁵. In addition to Noggin, dorsomorphin and LDN-193189 are also wellknown BMP inhibitors that are used for dopaminergic differentiation²⁴.

LDN or Noggin inhibits the BMPs while SB431542 has recently been found to dorsalise the neural development by inhibiting TGF β . It prevents the production of Receptor-regulated mothers against decapentaplegic+ *Caenorhabditis elegans* protein (RSMADs) so that the yield of SMAD4 decreases and the BMP/TGF β signaling pathway is down-regulated¹²⁶. The combination of LDN and SB431542, and also Noggin and SB431542, has achieved great effects in deriving dopaminergic neurons from hiPSCs/hESCs.^{17, 23, 24}

3.2.3 *SHH pathway and FGF8:*

Sonic hedgehog (SHH) and fibroblast growth factor (FGF8) are traditional factors used in dopaminergic differentiation. SHH is an important protein in the hedgehog pathway and has a function in embryonic development including the patterning of the midline of the brain. It tends to have a polarization function with the help of fibroblast growth factors^{127, 128}. FGF8 is a very important member of the FGF family, which is involved in several cellular activities. FGF8 controls biological processes including embryonic brain development and the patterning of the midbrain. It is believed that SHH is expressed along the ventral neural tube and FGF8 is produced at the mid/hindbrain boundary. The interaction of these two signals creates the growing balance for dopaminergic neurons in the midbrain¹²⁹.

Additional factors and signaling pathways to this classical combination of SHH and FGF8 have been discovered to regulate dopaminergic differentiation. Rosenthal *et al.* first discovered that SHH

cooperating with FGF8 can induce dopaminergic neurons at ectopic locations with a rat embryo, while SHH alone can only induce dopaminergic neurons at the dorsal ventral axis¹²⁹. They also found that supplementation of FGF4 into the mixture of SHH and FGF8 induces 5-HT neurons instead of dopaminergic neurons¹²⁹. These two factors combined with Nurr1 overexpression have a further enhancing effect on differentiating neural stem cells into dopaminergic neurons. In this study, the genetic modification of Nurr1 overexpression increased the response of neural stem cells toward SHH and FGF8 stimulation¹³⁰. This also implies an interaction of SHH and FGF8 with other factors or signaling pathways. The creative part of this article is the detection of the specific time for SHH and FGF8 to give rise to functional TH+ neurons. Since most of the activities are temporary during human embryonic development, it makes sense to apply inducing factors only during a period of defined time rather than throughout the whole process¹³¹. These supplemented differentiation protocols mentioned here may have focused on different new compounds or factors such as new feeders¹³², retinoic acid²² or SMAD and Wnt signals^{17,23}, but most of them still require the addition of SHH and FGF8.

3.3 *A symphony of signaling pathways*

Due to the complexity of the neuronal structure and networks, neuronal differentiation is a process that requires coordinated actions of different factors and signaling pathways. This has been proven to be the case for dopaminergic differentiation of hESCs/hiPSCs. In the process of midbrain patterning, multiple interactions between different pathways have given hope for differentiation with high efficiency.

The floor plate is an essential ventral midline-organizing center that produces the morphogen SHH, which also functions in the production of midbrain dopaminergic neurons at later stages. Research has shown that interaction of canonical Wnt/ β -catenin signaling and SHH may orchestrate floor plate neurogenesis and then decide the future midbrain patterning^{133,134}. Another coordination is between SMAD and Wnt on dopaminergic differentiation. SMAD signaling inhibition acts as an upstream

signal of Wnt signaling through SMAD-interacting protein 1 (SIP1)¹³⁵. Recent studies have greatly improved the understanding of the above signaling pathways to generate a high yield of dopaminergic neurons *in vitro*. Studer's group reported a dopaminergic differentiation protocol, which has a very high efficiency even at the early stage of differentiation²³. They combine SMAD inhibition together with SHH and FGF8 supplementation. During the first 11 days, the cells are cultured with SMAD inhibitors - Noggin and SB - added to the medium for neural induction. Almost 80% of cells are converted into neural ectoderm cells expressing PAX6. SHH and FGF8 function as midbrain neural patterning factors. With additional factors, such as GDNF and BDNF, they can improve dopaminergic differentiation. By day 19, TH positive cells were found in culture with a 50% proportion²³. Later, the same group raised a concept about floor plate patterning (FP). They reported a method to induce floor plate neural progenitors to generate region specific neural progenitors by adding Wnt1¹⁶. Their protocol was further optimized in a later study²⁴. With the combination of SMAD inhibition, SHH induction and, particularly CHIR, a Wnt signaling activator, they generated the floor plate midbrain neural progenitors by day 11 of differentiation with an efficiency of around 90 percent in total cell populations. On day 25, a relatively large portion (around 20%) of cells expressing TH were positive for FOXA2 (a floor plate cell marker). By day 50, the stage of dopaminergic maturation, they found 70% of TH+ cells in the whole cell population. With similar approaches, two independent studies further verified the above findings and protocols^{17, 136}. The major modifications were refined by doses of CHIR, a GSK-3 β inhibitor, which promotes the Wnt pathway. They performed a region specific investigation and found that just by changing the concentration of CHIR they could generate neurons specific for the whole neural tube. With a narrow range of 0.7-0.8 μ M of CHIR, midbrain dopaminergic precursors were produced with a relatively pure population. Due to this purity, they could transplant the cells at a very early stage on day10, which is a major advantage. This protocol used an Embryoid body (EB) culture format for neural induction, without the use of Matrigel or other non-human matrix. It could have a promising future

for clinical use as well^{17, 136}.

All of these results show us a new coming era of generating dopaminergic neurons with a better understanding of the neural development process. In a less time-consuming, but also accurate way, researchers are on their way to generating a larger proportion and purer population of TH+ neurons, which may one day be used in cell replacement therapy.

Here we created a figure summarizing how the three signaling pathways co-operate with each other (Figure 2). We also compiled a table of recent publications on dopaminergic differentiation (Table 2).

Figure 2: Signaling pathways involved in dopaminergic differentiation

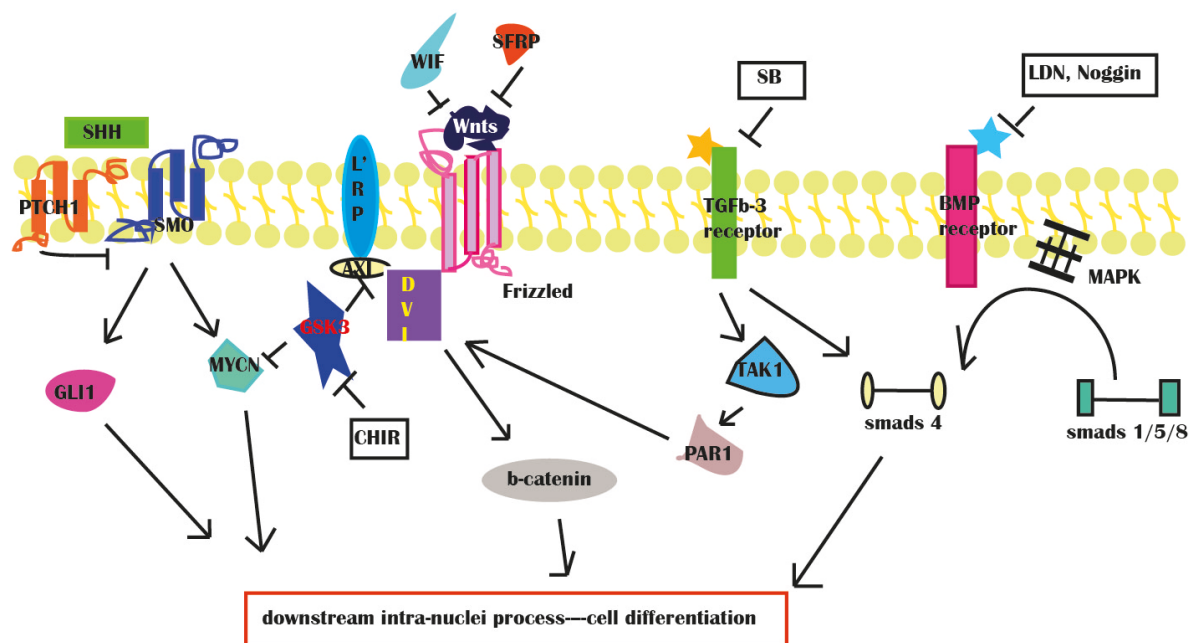


Fig.2. Depiction of three different pathways involved in dopaminergic differentiation and their interaction with each other. The far left of the figure depicts the SHH pathway, the middle shows the Wnt pathway, and the right illustrates the SMAD pathway. In the neural development process, the SMAD pathway is inhibited. Commonly used inhibitors include LDN, SB and Noggin, as shown in the figure. Wnt pathway and SHH pathway need to be promoted in order to facilitate dopaminergic differentiation. Functional receptors and agonists or antagonists are shown here.

3.4 Application of FACS sorting to enrich dopaminergic neuron population

Many differentiation methods result in a mixed population of neuronal and non-neuronal cells. Dopaminergic cells are in mixed culture with glia, neural progenitors, and other neuronal cell types. This may cause risk of tumor formation or overgrowth, especially with neural progenitor cells. Cell

selection can be used to purify certain neuronal phenotype with certain specific cell surface markers¹³⁷. Yosif *et al* use BACs to establish reporter lines, which will turn green at certain stage of dopaminergic differentiation. They differentiate and purify dopaminergic cells effectively for transplantation. With nearly pure population of cell culture, animals receiving transplantation exhibit clear behavior recovery without any tumor formation. Most interestingly, they create reporter lines driven by promoters essential at different stages of dopaminergic development and successfully identify the Nurr1-positive stage as the most appropriate transplantable stage, which resulted in the best survival *in vivo*¹³⁷. Hedllud *et al* also use similar sorting strategies in mouse ESCs¹³⁸. Other studies accent the importance of cell selection in the process of neuronal differentiation. Pruszek *et al* have developed methods of identifying the neuronal population apart from non-differentiated cells by labeling neurons with synapsin I–GFP and immature embryonic cell types, such as SSEA. In this way, they purify differentiated neuronal population from cells maintaining pluripotency, which is essential when it comes to decreasing the risk of tumor formation in transplantation therapy¹³⁹.

Table2: Overview of dopaminergic differentiation

Cell lines	Culturing condition	Genetic modification	Factors used	TH+ generation	Ref
hESCs (BG01)	Grown with PA6 mouse stromal cells	---	---	TH+ cells in 87% colonies	140
mESCs	Grown with PA6 mouse stromal cells	Nurr1 overexpression	SHH, FGF-8, AA	56% of total cells 90% of TuJ1+ cells	98
hESCs (H1, H9, HES-9)	Grown with MS5 mouse stromal cells	---	SHH, FGF-8, BDNF, GDNF, TGF-b3, cAMP, AA	19%–39% of total cells 64% TuJ1+ cells	95
mESCs	Grown as EBs	---	bFGF, SHH, FGF-8, AA	5% of total cells (7% of TuJ1+ cells)	99
mESCs	Grown as EBs	Pitx3 or Nurr1 Overexpression	bFGF, FGF8, SHH	25% of TuJ1+ cells	141
HSF-6	Grown with MS5 Mouse stromal cells	Modify with SHH and Bcl-XL gene	SHH, FGF8, Ascorbic acid	13.0 ± 0.6% on D6	142, 143
hESCs	Grown as EBs with primary astrocytes	---	bFGF, SHH, FGF-8	40% of total cells 67% of TuJ1+ cells	10
hESCs hiPSCs 2C6 SeV6	Matrigel, laminin and FN	---	bFGF, SHH, FGF8, LDN SB, CHIR, BDNF, GDNF, AA, cAMP, DAPT	70% of total cells on D50	23, 24
hESCs H9, SA121	EB, laminin and FN	---	bFGF, LDN, SB, SHH, FGF8 and CHIR. BDNF, GDNF, AA, cAMP DAPT	50% of total cells on D42	17
hESCs hiPSCs 4 virus-lines 2 protein-lines	MS5 stromal cells overexpress SHH	---	SHH, FGF8, BDNF, GDNF, AA, cAMP	35-45% of TuJ1+	20

4 Application of Intra-cerebral transplantation

4.1 *Survival of transplanted cells versus phenotypic stability*

Together with advanced differentiation protocols, the result of research into transplantation has been greatly improved. Dopaminergic neurons, or dopaminergic neural progenitors, can be transplanted at a very early stage (for example, day 10¹⁷) with an improved survival rate and lower tumor formation. Also, the grafts after transplantation show promising integration with the host brain^{99,144}. Below, we summarize the cell lines, differentiation methods, TH+ cell yields, transplantation time and the survival, integration and tumor formation of grafts from recent studies (Table 3).

4.2 *Promotion of integration of transplanted neurons with the host brain*

The aim of transplantation is to study defined conditions for cell replacement therapy. For dopaminergic neurons to function properly *in vivo*, one of the key requests that must be met is for the dopaminergic neurons to function properly. This involves two main criteria: 1) TH+ neurons themselves must be mature enough. There should be no sign of tumor formation or any proliferating cells, as we discussed above. Also, the grafted neurons need to be functionally mature with regulated release of dopamine and also electrophysiological characteristics of midbrain dopaminergic neurons¹⁴³. 2) Grafted TH+ neurons must establish local circuits both within the grafts and particularly with host neurons¹⁴⁵⁻¹⁴⁷.

Recent studies regarding cell transplantation mentioned above have done a great job in this aspect^{17, 24, 148}. Most of the research discussed here has resulted in good integration between the host brain and grafts. TH fiber outgrowth is often the first sign of innervation commencing, followed by extending into other parts of the brain^{146, 147, 149}. However, none of the transplantation studies here have looked into the detailed synapse formation or microscopic connections between individual neurons, which from our point of view could be an area for improvement in the future.

In summary, advances that have been made in the field of cell transplantation therapy for PD are mainly: 1) shorter maintenance time *in vitro*. Transplantation stage can be brought forward to as early as day 10 of differentiation, without compromising the survival of grafts nor increasing the risk of tumor formation¹⁷. 2) Integration and migration after transplantation are mostly seen in recent cases, with good TH fiber growth and innervation with the host brain^{146, 149}. 3) Lower tumor formation is detected, even after long time (up to 4 months) *in vivo*. However, in two recent studies, neural progenitor marker-positive cells or even Ki67 expressing cells are still detected in grafts after one year^{146, 147}. This implies that a proportion of grafted cells may still be capable of proliferating, and suggests a potential risk of tumor formation if the animals receiving grafts live for an extended period of time.

Table 3: cell transplantation in recent studies

Cell lines	Differentiation	TH %	Transplantation time	Survival and Integration	Behavior and tumor formation	Ref
O9	SHH/FGF8/Ascorbic acid	6% in Tuj1+ on day23	Day 21	TH fibers into host striatum	Behavior Recovery 4 in 5 2 out of 5 have tumor formation	^{99, 144}
HSF-6	1, First into Neural progenitors. 2, BDNF, GDNF, cAMP. 3, MS5 overexpress SHH and Acl-XL. 4, Modify with SHH and Bcl-XL gene;	13.0 % on day 6 after NP	Day 7 to day 15 after NP induction	1,262 ± 207 cells/graft In 483,814 ± 128,923 cells transplanted	Up to 50% of behavior recovery Neuronal proliferation marker continues positive but no morphology of tumor	^{142, 143}
H9, H1 hiPSCs 2C6, SeV6	SMAD inhibition, /SHH+FGF8/ WNT activation	On day 50, around 70% of total cells	Day 25 of differentiation	15,000 TH cells in 253105 cells grafted. Massive TH fibers extend to host striatum	A complete rescue of amphetamine induced rotation. < 1% of Ki67+ cells	^{23, 24}
H9, SA121	SMAD inhibition, SHH+FGF8 and WNT activation EB, laminin and FN	On day 12, 81% of cells expressing FOXA2 and LMX1A. On day 42, 70% of TH+ cells in total cells	Day 10	After 18 weeks, 54.2% of cells in grafts were TH + Interaction with host striatum	A significant recovery of behavior test. Only a few NESTIN-expressing cells and cell proliferation is minimal	¹⁷
MR31 MMW2	NSC induction FGF8, SHH and BDNF for the TH differentiation	Approximately 30% of total cells are TH+	Day 20 after NSCs induction	2,106 6 313 TH-positive cells/mm ³	Significant rotational improvement at 12 weeks Resembling teratoma-like tissues	¹⁵⁰
K1, S1, FF17-5, and FF21-26 PD-iPS cells	Stromal cell MS5 SHH/FGF8/AA/BDNF/GDNF/Noggin	Among the Tuj1-positive (30–50% of the total cells) 64–79% of the cells expressed TH	Day 42 of in vitro differentiation	4 weeks, 122 ± 24 TH+ neurons per mm ³ 16 weeks, 4,890 ± 640 TH+ neurons per graft TH fibers within the grafts and to the host brain	No signs of tumor formation, 0.09% were positive for the proliferative marker Ki-67 All animals show behavior recovery	^{95, 145}
WA09 hiPSC lines: 2135 and 1815 Non-human PiPSC lines	Matrigel LDN/SB/SAG/purmorphamine/retinoic acid /SHH/FGF8a/wnt1/noggin Supplemented CHIR	Day 30 FOXA2 >50%–70%, TH >10%–20%, this ratio increases after sorting	Day30 of differentiation through sorting or without sorting	12359± 2015 TH+ cells per mm ³ unsorted grafts vs. 28,621 ± 6,340 TH+ cells per mm ³ sorted grafts TH+ fiber outgrowth >31,000 TH+ fibers per mm ³	Significant recovery in 16 weeks. 16 weeks later, endothelium cell-type in unsorted overgrowth was detected in the 6-OHDA rat striatum	¹⁴⁷
4 lenti lines 2 retro lines 2 protein based lines HSF6 and H9	MS5 stromal cells overexpress SHH for NPC induction Supplemented with SHH/FGF8/BDNF/GDN/A A/cAMP	35-45% of Tuj1+ (60-70% of total cells) cells are TH+	Day 4-8 during NPC or terminal 5 days of differentiation around day 7-11	Moderate concentration NPCs: TH+ cells (26,882 ± 9,089 cells/graft)	Moderate concentration NPCs: Moderate but significant level of functional recovery was observed No tumor growth	^{20, 146}

5 Induced pluripotent stem cells: beyond cell therapy

5.1 *Unique models to study disease mechanisms*

A number of cell and animal models have been used in PD research. Among these models, more and more genetically modified models, either knockout or transgenic, expressing or silencing different PD related genes, have been generated. Use of these models substantially deepens our understanding of PD pathogenesis and helps us to search for disease modifiers and novel targets for possible therapeutic intervention. These models have played important roles in the progress of PD research. However, they all have drawbacks that limit their further applications. Animal models involve large quantities of work and have differences from the real human situation since the most commonly used animals are rodents. Monkeys and other non-human primates have also been used, but only in a very limited number of studies^{151, 152}. The cell lines used are often immortal cell lines, which are created either through gene modification or from tumor cell lines so that they can be maintained for extended generations *in vitro*. These have all been very useful as tools for neural toxicity and proteomic studies, but each is limited in its relevance to PD in one way or another. Their non-neuronal nature and variable genetic backgrounds have restricted them as reliable disease models.

Compared to the previous examples, iPSC derived from PD patients are thus promising models for PD study in many aspects.

1. Accurate modeling of disease

iPSCs are often generated from patient somatic cells with exactly the same genetic background as the patient. This makes it possible to study early onset molecular changes during disease progress.

Genetics in PD

PD is attributed to multiple factors. Although over 90% of PD cases are sporadic¹⁵³, with or without the possibility of genetic susceptibility, genetic influence still plays an important role in PD etiology. Eleven mutations out of 16 disease loci have thus far been proven to lead to PD pathology, including LRRK2, PINK1 and SNCA.

α -Synuclein is the key protein in PD pathological changes; aggregation of this protein causes the formation of Lewy bodies. The α -synuclein gene (SNCA) was the first dominant gene found to cause inherited familial PD. SNCA mutations include p-H50Q¹⁵⁴, Ala30Pro¹⁵⁵, Ala53Thr¹⁵⁶, gene triplication¹⁵⁷ and E46K^{158, 159}. Each of these is a very well defined mutation related to PD. SNCA gene triplication is for now the most studied mutation in iPSCs. This mutation has been proven to have a perturbing effect on iPSCs derived neurons. After successfully differentiated into dopamine neurons, cells bearing the SNCA triplication exhibit disease phenotypes such as accumulation of α -synuclein. They are also more sensitive to oxidative stress and more vulnerable to peroxide challenge¹⁵⁷. SNCA triplication iPSCs carry double the amount of the synuclein gene as compared to control lines. *In vitro* culture environment of these cells also contains double the amount of α -synuclein. This therefore facilitates the onset of early PD and makes these cells a great tool to study protein pathogenesis in PD¹⁶⁰. Gene correction has been thought to be one possibility for novel therapy in PD. In 2011, Soldner *et al* shows the correction of point mutation A53T and E46K in synuclein gene using a combination of Zinc finger and iPSC¹⁵⁶. This provides a new direction of therapeutic study for PD.

LRRK2¹⁶¹ mutations that are related to PD include R1441C and G2019S. G2019S is the most studied LRRK2 mutation in PD. Research has shown that hiPSC-derived dopamine neurons bearing the LRRK2 G2019S mutation suffer greater oxidative stress and show an increasing level of α -synuclein accumulation. When exposed to oxidative stress reagents, such as 6-hydroxydopamine, LRRK2 mutant hiPSC-derived neurons are more vulnerable to caspase-3 challenge and also cell death¹⁶². LRRK2 G2019S mutation has also been shown to be involved in autophagy pathology in PD progress. LRRK2 mutant iPSC-derived neurons show impaired synaptic and neuritic morphology compared to control iPSC-derived neuronal cells. These diseased cells also exhibit an increased number of autophagy vacuoles, which occurs while the autophagosome clearance level is lowered in those cells. Interestingly, in this research, iPSCs generated from sporadic PD patient tissue also have

the same pathological changes when compared with control lines¹⁶³. A recent study revealed a correlation between the LRRK2 mutation and several PD related transcriptional factors including CPNE8, MAP7, etc. The G2019S mutation of LRRK2 results in dysregulation of these factors, which then contributes to neuronal degeneration. In this study, they also performed gene correction therapy that eliminated the LRRK2 mutation, which rescued some of the expressions and alterations in the diseased neurons. This can be essentially meaningful because it indicates a new promising therapeutic method¹⁶⁴.

PINK1 is a gene encoding mitochondrial kinase, which is related to mitochondrial physiological degradation. The mutation of PINK1 in familial PD causes an impairment of mitochondrion function, which leads to further pathological changes. Knockdown cell models are very commonly used for mechanistic studies of PINK1 mutation in PD. iPSCs with PINK1 mutation provide a more direct view of endogenous PINK1 function. PINK1 mutated iPSCs can be differentiated to dopaminergic neurons, which later exhibit a mitochondrial deficit of recruiting Parkin and an increasing number of impaired mitochondria. They also exhibit a higher vulnerability against ROS stress and dysfunction in mitochondrial respiration. This can be corrected by the presence of exogenous, normal PINK1. Study of PINK1 in iPSCs accents the role of mitochondrial dysfunction in PD pathology. Therefore, this is a successful example of using iPSCs as a genetic model for mechanic study of PINK1 mutation^{165, 166}.

The advantage of iPSCs as a model here is in giving rise to patient-specific cells. iPSCs make it possible to generate pluripotent cells from any individual in the context of the patient's own particular genetic identity, not only in the case of genetic mutations but also for sporadic forms of the disease^{167, 168}. Until now, a number of iPSC lines from PD patients have been generated in published reports, as summarized in Table 4.

Table 4: PD specific iPSC lines

Year	Gene	Mutation	Differentiation	Reference
2010	SNCA	Triplication	Differentiate into dopaminergic neurons using protocol ²³	¹⁶⁰
2011		A53T	Differentiate into dopaminergic neurons using protocol ⁹⁵	¹⁵⁶
2011		Triplication	Differentiate into dopaminergic neurons using protocol ¹⁵⁷	¹⁵⁷
2012		Triplication	Differentiate into dopaminergic neurons using protocol ^{169, 170}	¹⁶⁹
2014		Triplication	Differentiate into dopaminergic neurons using protocol ²⁴	¹⁷⁰
2011	LRRK2	G2019S	Differentiate into dopaminergic neurons using protocol ²³	¹⁶²
2013		G2019S	Differentiate into dopaminergic neurons using protocol ²³	¹⁶⁴
2014		R1441C, G2019S	Differentiate into dopaminergic neurons using protocol ^{166, 171}	¹⁷²
2011	PINK	(c.1366C>T; p.Q456X) or (c.509T>G; p.V170G)	Differentiate into dopaminergic neurons using protocol ²³	¹⁶⁵
2012		Q456X	Differentiate into dopaminergic neurons using protocol ²²	¹⁶⁶
2012	PARK2	Deletion in exon 3, 5 or 6	Differentiate into dopaminergic neurons using protocol ²³	¹⁷³

Beyond dopaminergic neurons

In addition to dopamine cells, other neuronal or glial cell types are also involved in PD pathogenesis. Astrocytes constitute the main population of glial cells participating in metabolic processes and regulation of ion concentration in the brain¹⁷⁴. They also play an important role in synaptic crosstalk and the neural repair process¹⁷⁵. Astrocytes have been recognized to be greatly involved in PD onset and progression. MPTP metabolism, which is directly connected to sporadic PD onset, is processed in astrocytes¹⁷⁶. NF-E2-related factor (Nrf2) expression in astrocytes has been proven to prevent the neurotoxic effect induced by MPTP¹⁷⁷. Astrocyte immune reaction plays a crucial neuroprotection role in PD^{178, 179}. Astrocytes also directly correlate with PD onset through several PD related genes. The DJ-1 gene encodes a highly conservative protein. The elimination of this gene gives rise to

autosomal Parkinsonism. DJ-1 is commonly known to have a protecting function against oxidative stress in neurons. Thus, it plays an essential role in preventing the process of PD¹⁸⁰. In 2009, Mullet *et al* investigated the function of astrocytes in PD onset and progression using a DJ-1 knockdown model. They used neuron-astrocyte contact and non-contact co-cultures to show that DJ-1 knockdown in astrocytes impaired their neuroprotective capacity and supporting property for neurons. These findings support the view that astrocytic dysfunction, in addition to neuronal dysfunction, may contribute to the progression of a variety of neurodegenerative disorders¹⁸¹⁻¹⁸³. In fact, we should consider astrocytes and other non-neuronal cells as possible contributors to the early PD pathogenic mechanisms. Another important point might be that when considering PD treatment, we may need to consider things beyond dopamine neurons, for example whether glial cells are acting as supportive environment or not. Dopamine related therapy alone might be just part of the issue. Likewise, when we are trying to understand PD mechanisms or choosing PD models, we should also explore other cell types in the surrounding environment.

Another directly related astroglial pathology is associated with α -synuclein. In PD, inflammation plays an important role in neuronal degeneration and worsening of the disease¹⁸⁴. The triggering of the astrocyte inflammation response accounts for a large portion of this. There has been evidence showing that there is direct neuron to astrocyte transfer of α -synuclein through astroglial endocytosis, which results in the accumulation of α -synuclein in astroglia¹⁸⁵. This will cause inflammatory responses from astrocytes, which later contributes to loss of neurons¹⁸⁶.

In conclusion, when studying PD pathogenesis or therapies, it is important for us to have a view beyond dopamine neurons. Instead, more of the environmental factors, especially glial cells surrounding and supporting dopaminergic neurons should be taken account. This has been a developing application of hiPSCs. Recently, a few studies have examined methods of converting hiPSCs to astrocytes, as a novel model to study astroglial influences on dopamine neurons. In 2011, Krencik *et al* developed a chemically defined method, which generated almost pure population of

premature astrocytes¹⁸⁷. These precursors show robust similarity to primary astrocytes, including glutamate responses, calcium wave prolongation and also synaptogenesis. These progenitors, after transplantation into rodent brain, survive and mature into astrocytes with association with blood vessels. Following this study, additional reports showed efficient methods for generating astrocytes from hiPSCs *in vitro*¹⁸⁸⁻¹⁹⁰.

In summary, the multi-potential property of hiPSCs gives the possibility of studying cell types other than just dopaminergic neurons in the onset and development of PD. It is essentially important to consider the supporting cell populations when doing mechanistic studies and cell therapy as well. HiPSCs can give rise to neurons and astrocytes with the exact same genetic background. Through co-culture or transplantation studies, not only dopaminergic neurons, but also their environment will be taken into account. This gives us a more comprehensive modeling of the disease.

2. Self-renewal ability and pluripotent characteristics provide an unlimited cell source

Another outstanding advantage of iPSCs is their self-renewability and potential to give rise to almost all somatic cell types of the human body, including cardiomyocytes, neurons, glial cells, etc. iPSCs act like an unlimited source for generating disease-related specific cell types. In researches on neurodegenerative diseases, several disease specific cells have already been differentiated from iPSCs and used as tools for disease mechanism studies or drug screening. Svendsen and co-workers first generated iPSCs from a spinal muscular atrophy (SMA) patient and used them to derive motor neurons¹⁹¹. Amyotrophic lateral sclerosis (ALS) is another neurodegenerative disease involving motor neurons. Eggan *et al.* showed the possibility to produce motor neurons from iPSCs derived from patients suffering ALS mutations¹⁹². Similar achievements have also been made in other neurodegenerative diseases^{193, 194}.

5.2 Drug development with iPSCs

PD is the second most common neurodegenerative disease in man, yet there is still no effective therapeutic method for a cure. The most commonly used pharmaceutical therapy is L-DOPA¹⁹⁵, sometimes combined with dopamine receptor agonists. These methods are classical and effective in partially alleviating symptoms of patients suffering from PD. However, these drugs are not able to hold back disease progression. Gradually, patients become less sensitive to these pharmaceutical therapies and start to suffer from adverse effects, such as L-dopa induced dyskinesia¹⁹⁶.

For many years, the trial of drugs for PD therapy has relied on immortalized cell lines, animal models and then clinical trials. Fundamental research and preclinical research carried out in immortal cell lines and animal models are very crucial for effective drug discovery, but the interspecies differences make it hard to translate these readouts to the human disease. This ends up with an inefficient clinical trial when we try to test the drug on humans, because of the large difference that has to be overcome in this translational period. Thus, an efficient human species based model is highly sought after for the test of drugs for PD therapy.

iPSCs, with their self-renewability and potential to differentiate into any cell type of interest, shed positive light on cell replacement therapies for PD. Since pharmaceutical therapy cannot stop the process of dopaminergic neuronal death, iPSCs give hope to generating new dopaminergic neurons for autologous neural transplantation, as discussed in the section above. However, an alternative method of discovering new therapies is to explore new drugs that have better and longer lasting effects with fewer complications. Drug screening has been carried out mostly on cellular models such as modified immortal cell lines, primary neurons, and stem cells. Stem cells have proved useful tools for drug discovery. Unlike the other two types of cells mentioned previously, they can be maintained *in vitro* indefinitely, similar to immortalized cell lines, yet they do not involve any genetic modification. They can also be differentiated into neurons that are genetically and functionally

analogous to those of interest. Thus, compared to hESCs and neural stem cells, hiPSCs have clear advantages for drug screening.

Discovery of new therapy targets

Many drugs for treating neurodegenerative diseases work through certain signaling pathways. iPSCs provide a detailed view of disease mechanisms when used as a disease model and at the same time help researchers to reveal possible targets for chemicals or compounds to bind¹⁹⁷. These kinds of targets can be protein or molecule binding, gene correcting or even direct biochemical treatments. iPSCs work as a window for us to see the treatment changes happening in the disease state. Researchers have been using zinc fingers as a genetic correction tool for treatment or study of familial PD, which is a genetic modulation method targeting gene mutation in PD¹⁷². There have been researches testing small compounds or growth factors in other neurodegenerative diseases such as ALS and AD. For example DHA has been tested in AD therapy, although this drug is not a newly found one, but the application of it on AD derived stem cells makes it possible for understanding the mechanism underlying the therapy¹⁹⁸. In ALS, the chemical anacardic acid has been proven to revert pathological changes in ALS, such as shortened neuritis and reduced vulnerability to stress. Anacardic acid aims at mutant TDP43, which is a core pathological protein in ALS. Anacardic acid manages to clear the insoluble form of this protein¹⁹⁹. In summary, using iPSCs as a tool to discover or test therapeutic targets is an efficient and also reliable approach for drug screening.

Personalized drug discovery

The variation of responses to drug therapy comes from differences in genetic background and also very diverse environmental influences. Epigenetic modifications and other genetic interruptions also contribute to varying drug reactions²⁰⁰. Thus, personalized drug discovery requires models that can reflect the variation of human individuals. The major advantage of PD patient derived iPSCs, compared to other cell types, is the accurate imitation of the individual patient, since iPSCs are generated from the individual patient's somatic cells with the same genetic background as those in

the patient's tissue. iPSCs may exhibit the same pathological changes as the patient's neurons, and the reaction to drugs may be similar too. One of the problems encountered when treating PD is the variation of therapeutic outcomes. Thus, personalized drug discovery appears to be very critical in this aspect.

The majority of PD cases are sporadic. Although studies have found several genes that indisputably contribute to PD onset, such as SNCA, LRRK2, and PINK1, PD is still a multifactorial disease. The etiology may come from several gene origins. No single animal model will be able to include all the genetic changes that may have happened to patients. The advantage of iPSCs here is that they comprehensively cover the genetic distribution in a patient or the diversity between different patients, which makes them perfect for personalized drug screening²⁰¹.

Potential for high-throughput drug screening.

PD is a multifactorial disease; the therapeutic targets are numerous. While some PD cases have defined genetic mutations or known environmental causes, in most cases, the cause remains unknown. Therefore, high-throughput drug screening is a useful approach to select drugs that are generally functional to most patients regardless of etiology. iPSCs provide the possibility to establish a library of disease specific iPSCs with or without gene mutations. The cells collected may come from an SNCA mutation patient, a PARK2 mutation patient or even a sporadic PD patient. This cell library may act as a group of sampled patients. It can represent the genetic and potentially environmental variation of a broad spectrum of the population. Using this library for drug screening gives a better prediction of how patients generally may react to a new drug and can also test the toxicity if necessary. At the same time, the screening offers insight into the underlying mechanisms as well when different iPSCs react differently to the treatment. The difference between a real patient group and an iPSCs library is that iPSCs exist in vast quantities and the number of new drugs that can be applied to this library is unlimited, while in a patient more than 3 or 4 drugs are almost beyond applicability^{202, 203}.

iPSCs as a tool to test drug toxicity

Side effects or toxicity have been a severe problem in PD therapy and most other diseases. Previously, toxicity tests were always carried out in animals or only discovered upon reaching last stage clinical trials, which brings up ethical problems and safety issues. Using iPSCs to test the toxicities of new drugs will decrease the number of animals being used and also, since they have a much larger potential for translation, their reaction is much closer to real patients. In a way, iPSCs provide a window for us to see into the mechanism of toxicity as well, which is essential for the improvement of drug discovery²⁰⁴.

5.4 Establishment of biobank system for hiPSCs -- a direct comparison between autologous and allogeneic transplantation

Immune response plays a key role in the outcomes of transplantation. One of the major advances of hiPSCs is the syngeneic background with somatic cells. Autologous transplantation of iPSCs-derived cells compared to allogeneic transplantation results in a much lower immune response. Allo-recognition during transplantation will trigger the recipients' immune response thanks to the antigen or to the mismatch of major histocompatibility complexes (MHC), which decreases the survival of transplanted cells. And, at the same time, the recipient usually is under different combinations of immune suppression in order to maintain functionality of grafted cells²⁰⁵. Several studies have been looking into the immune response after autologous transplantation. Guha *et al* differentiate mouse iPSCs into three germ layers and upon transplantation into syngeneic rodents, they did not find any activation of the recipients' T cells or any antigen-triggered second immune response. They did not observe any rejection to syngeneic iPSCs from recipients²⁰⁶. Sundberg *et al* also differentiated human and non-human primate iPSCs into dopamine neurons. They improved the differentiation protocols by applying cell sorting based on neuronal markers. One year after autologous transplantation, one primate survived with iPSCs derived neural cells in the striatum with no trace of immune response¹⁴⁷. Asuka *et al* did a direct comparison between autologous and allogeneic transplantation using primate

iPSCs; based on these studies, it appears evident that the autologous transplantation result in a much lower immune response compared to allogeneic transplants, which also leads to a higher ratio of dopaminergic cell survival after transplantation²⁰⁵.

So, establishing a hiPSCs cell bank for the regenerative therapy of PD is very necessary. Unlike the transplantation of primate iPSCs, it is not realistic to establish a bank solely for autologous transplantations. Ideally, the cell bank should be able to provide at least HLA-matched iPSCs for patients with PD. Taylor *et al* reported the establishment of HLA-based iPSC cell bank matching 93% of the UK population by using hiPSCs generated from 150 volunteers²⁰⁷. Xue *et al* have developed a method for generating a large scale of hiPSCs from urine-derived cells in a feeder-free and virus-free method, which largely increase the possibility to establish this cell bank for clinical cell transplantation²⁰⁸. Similar achievements have been made by Beers *et al* by using xeno-free and feeder-free methods which allow to generate up to 200 lines per year²⁰⁹. All the above studies show us the necessity and also possibility of establishing a HLA based hiPSCs cell bank. This gives new hope for clinical cell transplantation therapy in PD.

5.5 Future challenges for hiPSC/hESC application

As discussed above, hiPSCs and hESCs have advanced as cell sources when applied in cell replacement therapy, disease modeling and regenerative medicine. In particular, hiPSCs, with their self-renewability and potential to differentiate into multiple somatic cell types, have been promising for the future study of PD. Recent improvements in neural differentiation and transplantation methods have made the application of hiPSCs more efficient and reliable.

However, problems still exist for further application of these stem cells. Firstly, using hiPSCs or hESCs for clinical therapy is still relatively unrealistic when it comes to both safety and ethical issues. The main ethical issue comes from hESCs sourced from human fetal tissue. In this aspect, hiPSCs solve the problem. However, hiPSCs bring up further safety issues. There exists evidence showing that hiPSCs might not be as similar to hESCs as previously thought when it comes to

differentiation potency and also the homogenization of differentiated cells. Neuronal differentiation of hiPSCs has significantly reduced efficiency and increased variability compared hESCs in the same condition in spite of the reprogramming method used²¹⁰. This might be due to the instability of hiPSCs. We know that the reprogramming procedure is a site of introduction for exogenous genes. Although methods of eliminating transcriptional genes following the induction of iPSCs have been developed, without genomic monitoring, we still do not know how much influence the residual genes still have on the iPSCs. There are genomic analyses using high resolution SNP analysis that show differences in sub chromosomal copies between hESCs/hiPSCs and somatic cells. They also observe the duplication of oncogenes arising during the differentiation process, which is a further threat of tumor formation²¹¹. HiPSCs, further, have a different genetic profile to hESCs. Also, between passages, hiPSCs can be different from each other²¹². Somatic coding studies of iPSCs reveal the existence of several mutations after reprogramming, which are related to cancer formation as well²¹³. All of these suggest that safety issues exist when it comes to the clinical use of both hiPSCs and hESCs. We need a completed system of gene monitoring before viably applying hiPSCs for cell therapy.

Besides the safety issue, there are other technical problems that must also be solved. As we discussed above, the low efficiency of dopaminergic neuron generation was one of the issues arising when it comes to cell transplantation. The recent improvement we described above partly solves the problem. However, a purer population of transplanted cells will still end up with better survival and less tumor formation. A method of purifying transplanted cells without the introduction of external marker genes, such as fluorescent proteins, is in high demand. As for now, most of the purification before transplantation relies on FACS sorting, which inevitably involves genes such as GFP²¹⁴.

6 Perspective

Here, we have summarized recent developments regarding the application of iPSCs and ESCs in PD research, following the line of: hiPSCs/hESCs → neural progenitors → neural progenitor with dopaminergic identity → transplantation. Many remarkable achievements have been made. We are currently at a stage of generating dopaminergic neurons from PD derived-iPSCs using relatively rapid and feeder cell-free, and most importantly, more highly efficient protocols, which are based on a better understanding of the molecular mechanisms. The grafting of dopaminergic neurons or neural progenitors can achieve an outcome of tumor-free transplants with high survival and integration rates. This will shed light on future clinical applications of iPSCs.

However, we are still facing major problems. In the future, iPSCs may be mainly used in two different ways related to PD, for cell replacement therapy in curing PD and as a model for drug screening and disease mechanism studies.

For cell replacement therapy, a “clean” genetic background and high purity level will be necessary for transplantable cells. Although a protein based cell-reprogramming method has been reported, its low efficiency in generating iPSCs hinders its usefulness for large-scale applications. Most of the iPSCs in use are still generated using traditional methods such as virus transduction or cDNA transfection. To generate iPSCs with a completely clean genetic background to be used in cell therapy, we must increase the efficiency for reprogramming using a protein-based method.

Although the efficiency has been dramatically increased, the challenge on purity of the cells for transplantation remains. Cells used for transplantation are expected to have a homogenous population, which will give a consistent outcome and no risk of tumor formation in the long run. The same expectations also apply for iPSCs-derived neurons that are used for disease mechanism studies and drug discovery.

Acknowledgements

We would like to acknowledge financial support by the National Key Basic Research Program of China (973 Program--NO.2010CB945203, 2011CB504104) (SD Chen) and the National Natural Science Foundation (81371407, SD Chen; 81430025 JY Li). Acknowledgements are also to the supports of the Swedish Research Council, BAGADILICO-Excellence in Parkinson and Huntington Research, Swedish Parkinson Foundation, Swedish Brain Foundation, MJ Fox Foundation for Parkinson's Research and ERA-Net Neuron Program (nEUROsyn). Wen Li and SD Chen are also supported by the National Key Basic Research Program of China (973 Program--NO.2010CB945203, 2011CB504104) and the National Natural Science Foundation (81371407). We would like to acknowledge Andrew C. McCourt for critical reading and linguistic revision of the manuscript.

7 References

1. Lindvall O, Rehnström S, Brundin P, et al. Human fetal dopamine neurons grafted into the striatum in two patients with severe Parkinson's disease. A detailed account of methodology and a 6-month follow-up. *Arch Neurol* 1989;46:615-631.
2. Sawle GV, Bloomfield PM, Bjorklund A, et al. Transplantation of fetal dopamine neurons in Parkinson's disease: PET [18F]6-L-fluorodopa studies in two patients with putaminal implants. *Ann Neurol* 1992;31:166-173.
3. Lindvall O, Sawle G, Widner H, et al. Evidence for long-term survival and function of dopaminergic grafts in progressive Parkinson's disease. *Ann Neurol* 1994;35:172-180.
4. Wenning GK, Odin P, Morrish P, et al. Short- and long-term survival and function of unilateral intrastriatal dopaminergic grafts in Parkinson's disease. *Ann Neurol* 1997;42:95-107.
5. Piccini P, Brooks DJ, Bjorklund A, et al. Dopamine release from nigral transplants visualized in vivo in a Parkinson's patient. *Nat Neurosci* 1999;2:1137-1140.
6. Piccini P, Lindvall O, Bjorklund A, et al. Delayed recovery of movement-related cortical function in Parkinson's disease after striatal dopaminergic grafts. *Ann Neurol* 2000;48:689-695.
7. Freed CR, Greene PE, Breeze RE, et al. Transplantation of embryonic dopamine neurons for severe Parkinson's disease. *N Engl J Med* 2001;344:710-719.
8. Olanow CW, Goetz CG, Kordower JH, et al. A double-blind controlled trial of bilateral fetal nigral transplantation in Parkinson's disease. *Ann Neurol* 2003;54:403-414.
9. Barker RA, Barrett J, Mason SL, Bjorklund A. Fetal dopaminergic transplantation trials and the future of neural grafting in Parkinson's disease. *Lancet Neurol* 2013;12:84-91.
10. Roy NS, Cleren C, Singh SK, Yang L, Beal MF, Goldman SA. Functional engraftment of human ES cell-derived dopaminergic neurons enriched by coculture with telomerase-immortalized midbrain astrocytes. *Nat Med* 2006;12:1259-1268.
11. Kawasaki H, Mizuseki K, Nishikawa S, et al. Induction of midbrain dopaminergic neurons from ES cells by stromal cell-derived inducing activity. *Neuron* 2000;28:31-40.
12. Bjorklund LM, Sanchez-Pernaute R, Chung S, et al. Embryonic stem cells develop into functional dopaminergic neurons after transplantation in a Parkinson rat model. *Proc Natl Acad Sci U S A* 2002;99:2344-2349.
13. Kim DW, Chung S, Hwang M, et al. Stromal cell-derived inducing activity, Nurr1, and signaling molecules

- synergistically induce dopaminergic neurons from mouse embryonic stem cells. *Stem Cells* 2006;24:557-567.
14. Brederlau A, Correia AS, Anisimov SV, et al. Transplantation of human embryonic stem cell-derived cells to a rat model of Parkinson's disease: effect of in vitro differentiation on graft survival and teratoma formation. *Stem Cells* 2006;24:1433-1440.
 15. Park IH, Arora N, Huo H, et al. Disease-specific induced pluripotent stem cells. *Cell* 2008;134:877-886.
 16. Fasano CA, Chambers SM, Lee G, Tomishima MJ, Studer L. Efficient derivation of functional floor plate tissue from human embryonic stem cells. *Cell Stem Cell* 2010;6:336-347.
 17. Kirkeby A, Grealish S, Wolf DA, et al. Generation of regionally specified neural progenitors and functional neurons from human embryonic stem cells under defined conditions. *Cell Rep* 2012;1:703-714.
 18. Hiratsuka M, Uno N, Ueda K, et al. Integration-free iPSCs engineered using human artificial chromosome vectors. *PLoS One* 2011;6:e25961.
 19. Kim JB, Greber B, Arauzo-Bravo MJ, et al. Direct reprogramming of human neural stem cells by OCT4. *Nature* 2009;461:649-643.
 20. Rhee YH, Ko JY, Chang MY, et al. Protein-based human iPSCs efficiently generate functional dopamine neurons and can treat a rat model of Parkinson disease. *J Clin Invest* 2011;121:2326-2335.
 21. Tsai SY, Bouwman BA, Ang YS, et al. Single transcription factor reprogramming of hair follicle dermal papilla cells to induced pluripotent stem cells. *Stem Cells* 2011;29:964-971.
 22. Cooper O, Hargus G, Deleidi M, et al. Differentiation of human ES and Parkinson's disease iPSCs into ventral midbrain dopaminergic neurons requires a high activity form of SHH, FGF8a and specific regionalization by retinoic acid. *Mol Cell Neurosci* 2010;45:258-266.
 23. Chambers SM, Fasano CA, Papapetrou EP, Tomishima M, Sadelain M, Studer L. Highly efficient neural conversion of human ES and iPSCs by dual inhibition of SMAD signaling. *Nat Biotechnol* 2009;27:275-280.
 24. Kriks S, Shim JW, Piao J, et al. Dopamine neurons derived from human ES cells efficiently engraft in animal models of Parkinson's disease. *Nature* 2011;480:547-551.
 25. Morizane A, Darsalia V, Guloglu MO, et al. A simple method for large-scale generation of dopamine neurons from human embryonic stem cells. *J Neurosci Res* 2010;88:3467-3478.
 26. Pang ZP, Yang N, Vierbuchen T, et al. Induction of human neuronal cells by defined transcription factors. *Nature* 2011;476:220-223.
 27. Yamanaka S, Blau HM. Nuclear reprogramming to a pluripotent state by three approaches. *Nature* 2010;465:704-712.
 28. Takahashi K, Yamanaka S. Induction of pluripotent stem cells from mouse embryonic and adult fibroblast cultures by defined factors. *Cell* 2006;126:663-676.
 29. Yu J, Vodyanik MA, Smuga-Otto K, et al. Induced pluripotent stem cell lines derived from human somatic cells. *Science* 2007;318:1917-1920.
 30. Patel M, Yang S. Advances in reprogramming somatic cells to induced pluripotent stem cells. *Stem Cell Rev* 2010;6:367-380.
 31. Sridharan R, Tchiew J, Mason MJ, et al. Role of the murine reprogramming factors in the induction of pluripotency. *Cell* 2009;136:364-377.
 32. Hamanaka S, Yamaguchi T, Kobayashi T, et al. Generation of germline-competent rat induced pluripotent stem cells. *PLoS One* 2011;6:e22008.
 33. Okita K, Ichisaka T, Yamanaka S. Generation of germline-competent induced pluripotent stem cells. *Nature* 2007;448:313-317.
 34. Nakagawa M, Takizawa N, Narita M, Ichisaka T, Yamanaka S. Promotion of direct reprogramming by transformation-deficient Myc. *Proc Natl Acad Sci U S A* 2010;107:14152-14157.
 35. Foster KW, Liu Z, Nail CD, et al. Induction of KLF4 in basal keratinocytes blocks the proliferation-differentiation switch and initiates squamous epithelial dysplasia. *Oncogene* 2005;24:1491-1500.
 36. Hochedlinger K, Yamada Y, Beard C, Jaenisch R. Ectopic expression of Oct-4 blocks progenitor-cell differentiation and causes dysplasia in epithelial tissues. *Cell* 2005;121:465-477.
 37. Nakagawa M, Koyanagi M, Tanabe K, et al. Generation of induced pluripotent stem cells without Myc from mouse and human fibroblasts. *Nat Biotechnol* 2008;26:101-106.
 38. Li W, Zhou H, Abujarour R, et al. Generation of human-induced pluripotent stem cells in the absence of exogenous Sox2. *Stem Cells* 2009;27:2992-3000.
 39. Huangfu D, Osafune K, Maehr R, et al. Induction of pluripotent stem cells from primary human fibroblasts with only Oct4 and Sox2. *Nat Biotechnol* 2008;26:1269-1275.
 40. Fuchs E, Horsley V. More than one way to skin. *Genes Dev* 2008;22:976-985.
 41. Tsai SY, Clavel C, Kim S, et al. Oct4 and klf4 reprogram dermal papilla cells into induced pluripotent stem cells. *Stem Cells* 2010;28:221-228.
 42. Kim JB, Sebastiano V, Wu G, et al. Oct4-induced pluripotency in adult neural stem cells. *Cell* 2009;136:411-419.

43. Mali P, Ye Z, Hommond HH, et al. Improved efficiency and pace of generating induced pluripotent stem cells from human adult and fetal fibroblasts. *Stem Cells* 2008;26:1998-2005.
44. Park IH, Zhao R, West JA, et al. Reprogramming of human somatic cells to pluripotency with defined factors. *Nature* 2008;451:141-146.
45. Mikkelsen TS, Hanna J, Zhang X, et al. Dissecting direct reprogramming through integrative genomic analysis. *Nature* 2008;454:49-55.
46. Bhutani N, Brady JJ, Damian M, Sacco A, Corbel SY, Blau HM. Reprogramming towards pluripotency requires AID-dependent DNA demethylation. *Nature* 2010;463:1042-1047.
47. De Carvalho DD, You JS, Jones PA. DNA methylation and cellular reprogramming. *Trends Cell Biol* 2010;20:609-617.
48. Huangfu D, Maehr R, Guo W, et al. Induction of pluripotent stem cells by defined factors is greatly improved by small-molecule compounds. *Nat Biotechnol* 2008;26:795-797.
49. Judson RL, Babiarz JE, Venere M, Blelloch R. Embryonic stem cell-specific microRNAs promote induced pluripotency. *Nat Biotechnol* 2009;27:459-461.
50. Lin SL, Chang DC, Chang-Lin S, et al. Mir-302 reprograms human skin cancer cells into a pluripotent ES-cell-like state. *RNA* 2008;14:2115-2124.
51. Kawamura T, Suzuki J, Wang YV, et al. Linking the p53 tumour suppressor pathway to somatic cell reprogramming. *Nature* 2009;460:1140-1144.
52. Takenaka C, Nishishita N, Takada N, Jakt LM, Kawamata S. Effective generation of iPS cells from CD34+ cord blood cells by inhibition of p53. *Exp Hematol* 2010;38:154-162.
53. Menendez S, Camus S, Izpisua Belmonte JC. p53: guardian of reprogramming. *Cell Cycle* 2010;9:3887-3891.
54. Ye D, Wang G, Liu Y, et al. MiR-138 promotes induced pluripotent stem cell generation through the regulation of the p53 signaling. *Stem Cells* 2012;30:1645-1654.
55. Zhao Y, Yin X, Qin H, et al. Two supporting factors greatly improve the efficiency of human iPSC generation. *Cell Stem Cell* 2008;3:475-479.
56. Han J, Sachdev PS, Sidhu KS. A combined epigenetic and non-genetic approach for reprogramming human somatic cells. *PLoS One* 2010;5:e12297.
57. Burdon T, Stracey C, Chambers I, Nichols J, Smith A. Suppression of SHP-2 and ERK signalling promotes self-renewal of mouse embryonic stem cells. *Dev Biol* 1999;210:30-43.
58. Ying QL, Wray J, Nichols J, et al. The ground state of embryonic stem cell self-renewal. *Nature* 2008;453:519-523.
59. Sato N, Meijer L, Skaltsounis L, Greengard P, Brivanlou AH. Maintenance of pluripotency in human and mouse embryonic stem cells through activation of Wnt signaling by a pharmacological GSK-3-specific inhibitor. *Nat Med* 2004;10:55-63.
60. Li W, Wei W, Zhu S, et al. Generation of rat and human induced pluripotent stem cells by combining genetic reprogramming and chemical inhibitors. *Cell Stem Cell* 2009;4:16-19.
61. Marson A, Foreman R, Chevalier B, et al. Wnt signaling promotes reprogramming of somatic cells to pluripotency. *Cell Stem Cell* 2008;3:132-135.
62. Feng B, Ng JH, Heng JC, Ng HH. Molecules that promote or enhance reprogramming of somatic cells to induced pluripotent stem cells. *Cell Stem Cell* 2009;4:301-312.
63. Shi Y, Despons C, Do JT, Hahm HS, Scholer HR, Ding S. Induction of pluripotent stem cells from mouse embryonic fibroblasts by Oct4 and Klf4 with small-molecule compounds. *Cell Stem Cell* 2008;3:568-574.
64. Liang G, Taranova O, Xia K, Zhang Y. Butyrate promotes induced pluripotent stem cell generation. *J Biol Chem* 2010;285:25516-25521.
65. Zhang Z, Gao Y, Gordon A, Wang ZZ, Qian Z, Wu WS. Efficient generation of fully reprogrammed human iPS cells via polycistronic retroviral vector and a new cocktail of chemical compounds. *PLoS One* 2011;6:e26592.
66. Wang W, Yang J, Liu H, et al. Rapid and efficient reprogramming of somatic cells to induced pluripotent stem cells by retinoic acid receptor gamma and liver receptor homolog 1. *Proc Natl Acad Sci U S A* 2011;108:18283-18288.
67. Zhao Y, Yin X, Qin H, et al. Two supporting factors greatly improve the efficiency of human iPSC generation. *Cell Stem Cell* 2008;3:475-479.
68. Hu W, Zhao J, Pei G. Activation of aryl hydrocarbon receptor (ahr) by tranilast, an anti-allergy drug, promotes miR-302 expression and cell reprogramming. *J Biol Chem* 2013;288:22972-22984.
69. Rais Y, Zviran A, Geula S, et al. Deterministic direct reprogramming of somatic cells to pluripotency. *Nature* 2013;502:65-70.
70. Yoshida Y, Takahashi K, Okita K, Ichisaka T, Yamanaka S. Hypoxia enhances the generation of induced pluripotent stem cells. *Cell Stem Cell* 2009;5:237-241.
71. Ichida JK, Blanchard J, Lam K, et al. A small-molecule inhibitor of tgf-Beta signaling replaces sox2 in

- reprogramming by inducing nanog. *Cell Stem Cell* 2009;5:491-503.
72. Solanki A, Lee KB. A step closer to complete chemical reprogramming for generating iPS cells. *Chembiochem* 2010;11:755-757.
 73. Okita K, Nakagawa M, Hyenjong H, Ichisaka T, Yamanaka S. Generation of mouse induced pluripotent stem cells without viral vectors. *Science* 2008;322:949-953.
 74. Stadtfeld M, Nagaya M, Utikal J, Weir G, Hochedlinger K. Induced pluripotent stem cells generated without viral integration. *Science* 2008;322:945-949.
 75. Fusaki N, Ban H, Nishiyama A, Saeki K, Hasegawa M. Efficient induction of transgene-free human pluripotent stem cells using a vector based on Sendai virus, an RNA virus that does not integrate into the host genome. *Proceedings of the Japan Academy Series B, Physical and biological sciences* 2009;85:348-362.
 76. Nishimura K, Sano M, Ohtaka M, et al. Development of defective and persistent Sendai virus vector: a unique gene delivery/expression system ideal for cell reprogramming. *J Biol Chem* 2011;286:4760-4771.
 77. Szymczak AL, Workman CJ, Wang Y, et al. Correction of multi-gene deficiency in vivo using a single 'self-cleaving' 2A peptide-based retroviral vector. *Nat Biotechnol* 2004;22:589-594.
 78. Kunath T, Saba-El-Leil MK, Almousailleakh M, Wray J, Meloche S, Smith A. FGF stimulation of the Erk1/2 signalling cascade triggers transition of pluripotent embryonic stem cells from self-renewal to lineage commitment. *Development* 2007;134:2895-2902.
 79. Woltjen K, Michael IP, Mohseni P, et al. piggyBac transposition reprograms fibroblasts to induced pluripotent stem cells. *Nature* 2009;458:766-770.
 80. Kaji K, Norrby K, Paca A, Mileikovsky M, Mohseni P, Woltjen K. Virus-free induction of pluripotency and subsequent excision of reprogramming factors. *Nature* 2009;458:771-775.
 81. Soldner F, Hockemeyer D, Beard C, et al. Parkinson's disease patient-derived induced pluripotent stem cells free of viral reprogramming factors. *Cell* 2009;136:964-977.
 82. Yu J, Hu K, Smuga-Otto K, et al. Human induced pluripotent stem cells free of vector and transgene sequences. *Science* 2009;324:797-801.
 83. Kim D, Kim CH, Moon JI, et al. Generation of human induced pluripotent stem cells by direct delivery of reprogramming proteins. *Cell Stem Cell* 2009;4:472-476.
 84. Cho HJ, Lee CS, Kwon YW, et al. Induction of pluripotent stem cells from adult somatic cells by protein-based reprogramming without genetic manipulation. *Blood* 2010;116:386-395.
 85. Ahrlund-Richter L, De Luca M, Marshak DR, Munsie M, Veiga A, Rao M. Isolation and production of cells suitable for human therapy: challenges ahead. *Cell Stem Cell* 2009;4:20-26.
 86. Martin MJ, Muotri A, Gage F, Varki A. Human embryonic stem cells express an immunogenic nonhuman sialic acid. *Nat Med* 2005;11:228-232.
 87. Rodriguez-Piza I, Richaud-Patin Y, Vassena R, et al. Reprogramming of human fibroblasts to induced pluripotent stem cells under xeno-free conditions. *Stem Cells* 2010;28:36-44.
 88. Jin S, Yao H, Weber JL, Melkounian ZK, Ye K. A synthetic, xeno-free peptide surface for expansion and directed differentiation of human induced pluripotent stem cells. *PLoS One* 2012;7:e50880.
 89. Unger C, Gao S, Cohen M, et al. Immortalized human skin fibroblast feeder cells support growth and maintenance of both human embryonic and induced pluripotent stem cells. *Hum Reprod* 2009;24:2567-2581.
 90. Imreh MP, Gertow K, Cedervall J, et al. In vitro culture conditions favoring selection of chromosomal abnormalities in human ES cells. *J Cell Biochem* 2006;99:508-516.
 91. Rajala K, Lindroos B, Hussein SM, et al. A defined and xeno-free culture method enabling the establishment of clinical-grade human embryonic, induced pluripotent and adipose stem cells. *PLoS One* 2010;5:e10246.
 92. Chou BK, Gu H, Gao Y, et al. A facile method to establish human induced pluripotent stem cells from adult blood cells under feeder-free and xeno-free culture conditions: a clinically compliant approach. *Stem Cells Transl Med* 2015;4:320-332.
 93. Li JY, Christophersen NS, Hall V, Soulet D, Brundin P. Critical issues of clinical human embryonic stem cell therapy for brain repair. *Trends Neurosci* 2008;31:146-153.
 94. Takagi Y, Takahashi J, Saiki H, et al. Dopaminergic neurons generated from monkey embryonic stem cells function in a Parkinson primate model. *J Clin Invest* 2005;115:102-109.
 95. Perrier AL, Tabar V, Barberi T, et al. Derivation of midbrain dopamine neurons from human embryonic stem cells. *Proc Natl Acad Sci U S A* 2004;101:12543-12548.
 96. Kanda S, Tamada Y, Yoshidome A, Hayashi I, Nishiyama T. Over-expression of bHLH genes facilitate neural formation of mouse embryonic stem (ES) cells in vitro. *Int J Dev Neurosci* 2004;22:149-156.
 97. Andersson E, Tryggvason U, Deng Q, et al. Identification of intrinsic determinants of midbrain dopamine neurons. *Cell* 2006;124:393-405.
 98. Kim DW, Chung S, Hwang M, et al. Stromal cell-derived inducing activity, Nurr1, and signaling molecules synergistically induce dopaminergic neurons from mouse embryonic stem cells. *Stem Cells* 2006;24:557-567.
 99. Lee SH, Lumelsky N, Studer L, Auerbach JM, McKay RD. Efficient generation of midbrain and hindbrain

- neurons from mouse embryonic stem cells. *Nat Biotechnol* 2000;18:675-679.
100. Park CH, Minn YK, Lee JY, et al. In vitro and in vivo analyses of human embryonic stem cell-derived dopamine neurons. *J Neurochem* 2005;92:1265-1276.
101. Buytaert-Hoefen KA, Alvarez E, Freed CR. Generation of tyrosine hydroxylase positive neurons from human embryonic stem cells after coculture with cellular substrates and exposure to GDNF. *Stem Cells* 2004;22:669-674.
102. Bagga V, Dunnett SB, Fricker-Gates RA. Ascorbic acid increases the number of dopamine neurons in vitro and in transplants to the 6-OHDA-lesioned rat brain. *Cell Transplant* 2008;17:763-773.
103. Correia AS, Anisimov SV, Roybon L, Li JY, Brundin P. Fibroblast growth factor-20 increases the yield of midbrain dopaminergic neurons derived from human embryonic stem cells. *Front Neuroanat* 2007;1:4.
104. Taipale J, Beachy PA. The Hedgehog and Wnt signalling pathways in cancer. *Nature* 2001;411:349-354.
105. Moon RT, Kohn AD, De Ferrari GV, Kaykas A. WNT and beta-catenin signalling: diseases and therapies. *Nat Rev Genet* 2004;5:691-701.
106. Logan CY, Nusse R. The Wnt signaling pathway in development and disease. *Annu Rev Cell Dev Biol* 2004;20:781-810.
107. Wilson SI, Rydstrom A, Trimborn T, et al. The status of Wnt signalling regulates neural and epidermal fates in the chick embryo. *Nature* 2001;411:325-330.
108. Panhuysen M, Vogt Weisenhorn DM, Blanquet V, et al. Effects of Wnt1 signaling on proliferation in the developing mid-/hindbrain region. *Mol Cell Neurosci* 2004;26:101-111.
109. Satoh K, Kasai M, Ishidao T, et al. Anteriorization of neural fate by inhibitor of beta-catenin and T cell factor (ICAT), a negative regulator of Wnt signaling. *Proc Natl Acad Sci U S A* 2004;101:8017-8021.
110. Kiecker C, Niehrs C. A morphogen gradient of Wnt/beta-catenin signalling regulates anteroposterior neural patterning in *Xenopus*. *Development* 2001;128:4189-4201.
111. Muroyama Y, Kondoh H, Takada S. Wnt proteins promote neuronal differentiation in neural stem cell culture. *Biochem Biophys Res Commun* 2004;313:915-921.
112. Yoshikawa S, McKinnon RD, Kokel M, Thomas JB. Wnt-mediated axon guidance via the *Drosophila* Derailed receptor. *Nature* 2003;422:583-588.
113. Lee HY, Kleber M, Hari L, et al. Instructive role of Wnt/beta-catenin in sensory fate specification in neural crest stem cells. *Science* 2004;303:1020-1023.
114. Parr BA, Shea MJ, Vassileva G, McMahon AP. Mouse Wnt genes exhibit discrete domains of expression in the early embryonic CNS and limb buds. *Development* 1993;119:247-261.
115. Castelo-Branco G, Wagner J, Rodriguez FJ, et al. Differential regulation of midbrain dopaminergic neuron development by Wnt-1, Wnt-3a, and Wnt-5a. *Proc Natl Acad Sci U S A* 2003;100:12747-12752.
116. Castelo-Branco G, Rawal N, Arenas E. GSK-3beta inhibition/beta-catenin stabilization in ventral midbrain precursors increases differentiation into dopamine neurons. *J Cell Sci* 2004;117:5731-5737.
117. Schulte G, Bryja V, Rawal N, Castelo-Branco G, Sousa KM, Arenas E. Purified Wnt-5a increases differentiation of midbrain dopaminergic cells and dishevelled phosphorylation. *J Neurochem* 2005;92:1550-1553.
118. Kele J, Andersson ER, Villaescusa JC, et al. SFRP1 and SFRP2 dose-dependently regulate midbrain dopamine neuron development in vivo and in embryonic stem cells. *Stem Cells* 2012;30:865-875.
119. Smith WC, Harland RM. Expression cloning of noggin, a new dorsalizing factor localized to the Spemann organizer in *Xenopus* embryos. *Cell* 1992;70:829-840.
120. Valenzuela DM, Economides AN, Rojas E, et al. Identification of mammalian noggin and its expression in the adult nervous system. *J Neurosci* 1995;15:6077-6084.
121. Hemmati-Brivanlou A, Kelly OG, Melton DA. Follistatin, an antagonist of activin, is expressed in the Spemann organizer and displays direct neuralizing activity. *Cell* 1994;77:283-295.
122. Sasai Y, Lu B, Steinbeisser H, Geissert D, Gont LK, De Robertis EM. *Xenopus* chordin: a novel dorsalizing factor activated by organizer-specific homeobox genes. *Cell* 1994;79:779-790.
123. Sonntag KC, Pruszak J, Yoshizaki T, van Arensbergen J, Sanchez-Pernaute R, Isacson O. Enhanced yield of neuroepithelial precursors and midbrain-like dopaminergic neurons from human embryonic stem cells using the bone morphogenetic protein antagonist noggin. *Stem Cells* 2007;25:411-418.
124. Chiba S, Lee YM, Zhou W, Freed CR. Noggin enhances dopamine neuron production from human embryonic stem cells and improves behavioral outcome after transplantation into Parkinsonian rats. *Stem Cells* 2008;26:2810-2820.
125. Nasonkin I, Mahairaki V, Xu L, et al. Long-term, stable differentiation of human embryonic stem cell-derived neural precursors grafted into the adult mammalian neostriatum. *Stem Cells* 2009;27:2414-2426.
126. Smith JR, Vallier L, Lupo G, Alexander M, Harris WA, Pedersen RA. Inhibition of Activin/Nodal signaling promotes specification of human embryonic stem cells into neuroectoderm. *Dev Biol* 2008;313:107-117.
127. Herzog W, Zeng X, Lele Z, et al. Adenohypophysis formation in the zebrafish and its dependence on sonic hedgehog. *Dev Biol* 2003;254:36-49.

128. Hynes M, Porter JA, Chiang C, et al. Induction of midbrain dopaminergic neurons by Sonic hedgehog. *Neuron* 1995;15:35-44.
129. Ye W, Shimamura K, Rubenstein JL, Hynes MA, Rosenthal A. FGF and Shh signals control dopaminergic and serotonergic cell fate in the anterior neural plate. *Cell* 1998;93:755-766.
130. Kim TE, Lee HS, Lee YB, et al. Sonic hedgehog and FGF8 collaborate to induce dopaminergic phenotypes in the Nurr1-overexpressing neural stem cell. *Biochem Biophys Res Commun* 2003;305:1040-1048.
131. Yan Y, Yang D, Zarnowska ED, et al. Directed differentiation of dopaminergic neuronal subtypes from human embryonic stem cells. *Stem Cells* 2005;23:781-790.
132. Shintani A, Nakao N, Kakishita K, Itakura T. Generation of dopamine neurons from embryonic stem cells in the presence of the neuralizing activity of bone marrow stromal cells derived from adult mice. *J Neurosci Res* 2008;86:2829-2838.
133. Joksimovic M, Yun BA, Kittappa R, et al. Wnt antagonism of Shh facilitates midbrain floor plate neurogenesis. *Nat Neurosci* 2009;12:125-131.
134. Tang M, Villaescusa JC, Luo SX, et al. Interactions of Wnt/beta-catenin signaling and sonic hedgehog regulate the neurogenesis of ventral midbrain dopamine neurons. *J Neurosci* 2010;30:9280-9291.
135. Cai J, Schleidt S, Pelta-Heller J, Hutchings D, Cannarsa G, Iacovitti L. BMP and TGF-beta pathway mediators are critical upstream regulators of Wnt signaling during midbrain dopamine differentiation in human pluripotent stem cells. *Dev Biol* 2013;376:62-73.
136. Ma L, Liu Y, Zhang SC. Directed differentiation of dopamine neurons from human pluripotent stem cells. *Methods Mol Biol* 2011;767:411-418.
137. Ganat YM, Calder EL, Kriks S, et al. Identification of embryonic stem cell-derived midbrain dopaminergic neurons for engraftment. *J Clin Invest* 2012;122:2928-2939.
138. Hedlund E, Pruszak J, Lardaro T, et al. Embryonic stem cell-derived Pitx3-enhanced green fluorescent protein midbrain dopamine neurons survive enrichment by fluorescence-activated cell sorting and function in an animal model of Parkinson's disease. *Stem Cells* 2008;26:1526-1536.
139. Pruszak J, Sonntag KC, Aung MH, Sanchez-Pernaute R, Isacson O. Markers and methods for cell sorting of human embryonic stem cell-derived neural cell populations. *Stem Cells* 2007;25:2257-2268.
140. Zeng X, Cai J, Chen J, et al. Dopaminergic differentiation of human embryonic stem cells. *Stem Cells* 2004;22:925-940.
141. Chung S, Hedlund E, Hwang M, et al. The homeodomain transcription factor Pitx3 facilitates differentiation of mouse embryonic stem cells into AHD2-expressing dopaminergic neurons. *Mol Cell Neurosci* 2005;28:241-252.
142. Ko JY, Park CH, Koh HC, et al. Human embryonic stem cell-derived neural precursors as a continuous, stable, and on-demand source for human dopamine neurons. *J Neurochem* 2007;103:1417-1429.
143. Ko JY, Lee HS, Park CH, Koh HC, Lee YS, Lee SH. Conditions for tumor-free and dopamine neuron-enriched grafts after transplanting human ES cell-derived neural precursor cells. *Mol Ther* 2009;17:1761-1770.
144. Wernig M, Zhao JP, Pruszak J, et al. Neurons derived from reprogrammed fibroblasts functionally integrate into the fetal brain and improve symptoms of rats with Parkinson's disease. *Proc Natl Acad Sci U S A* 2008;105:5856-5861.
145. Hargus G, Cooper O, Deleidi M, et al. Differentiated Parkinson patient-derived induced pluripotent stem cells grow in the adult rodent brain and reduce motor asymmetry in Parkinsonian rats. *Proc Natl Acad Sci U S A* 2010;107:15921-15926.
146. Sanchez-Danes A, Consiglio A, Richaud Y, et al. Efficient generation of A9 midbrain dopaminergic neurons by lentiviral delivery of LMX1A in human embryonic stem cells and induced pluripotent stem cells. *Hum Gene Ther* 2012;23:56-69.
147. Sundberg M, Bogetofte H, Lawson T, et al. Improved cell therapy protocols for Parkinson's disease based on differentiation efficiency and safety of hESC-, hiPSC-, and non-human primate iPSC-derived dopaminergic neurons. *Stem Cells* 2013;31:1548-1562.
148. Salti A, Nat R, Neto S, Puschban Z, Wenning G, Dechant G. Expression of Early Developmental Markers Predicts the Efficiency of Embryonic Stem Cell Differentiation into Midbrain Dopaminergic Neurons. *Stem Cells Dev* 2012.
149. Chang YL, Chen SJ, Kao CL, et al. Docosahexaenoic acid promotes dopaminergic differentiation in induced pluripotent stem cells and inhibits teratoma formation in rats with Parkinson-like pathology. *Cell Transplant* 2012;21:313-332.
150. Swistowski A, Peng J, Liu Q, et al. Efficient generation of functional dopaminergic neurons from human induced pluripotent stem cells under defined conditions. *Stem Cells* 2010;28:1893-1904.
151. Morin N, Di Paolo T. Pharmacological Treatments Inhibiting Levodopa-Induced Dyskinesias in MPTP-Lesioned Monkeys: Brain Glutamate Biochemical Correlates. *Frontiers in neurology* 2014;5:144.
152. Dugan LL, Tian L, Quick KL, et al. Carboxyfullerene neuroprotection postinjury in Parkinsonian nonhuman primates. *Ann Neurol* 2014;76:393-402.

153. Beevers JE, Caffrey TM, Wade-Martins R. Induced pluripotent stem cell (iPSC)-derived dopaminergic models of Parkinson's disease. *Biochem Soc Trans* 2013;41:1503-1508.
154. Appel-Cresswell S, Vilarino-Guell C, Encarnacion M, et al. Alpha-synuclein p.H50Q, a novel pathogenic mutation for Parkinson's disease. *Mov Disord* 2013;28:811-813.
155. Kruger R, Kuhn W, Muller T, et al. Ala30Pro mutation in the gene encoding alpha-synuclein in Parkinson's disease. *Nat Genet* 1998;18:106-108.
156. Soldner F, Laganieri J, Cheng AW, et al. Generation of isogenic pluripotent stem cells differing exclusively at two early onset Parkinson point mutations. *Cell* 2011;146:318-331.
157. Byers B, Cord B, Nguyen HN, et al. SNCA triplication Parkinson's patient's iPSC-derived DA neurons accumulate alpha-synuclein and are susceptible to oxidative stress. *PLoS One* 2011;6:e26159.
158. Polymeropoulos MH, Lavedan C, Leroy E, et al. Mutation in the alpha-synuclein gene identified in families with Parkinson's disease. *Science* 1997;276:2045-2047.
159. Zarranz JJ, Alegre J, Gomez-Esteban JC, et al. The new mutation, E46K, of alpha-synuclein causes Parkinson and Lewy body dementia. *Ann Neurol* 2004;55:164-173.
160. Devine MJ, Ryten M, Vodicka P, et al. Parkinson's disease induced pluripotent stem cells with triplication of the alpha-synuclein locus. *Nat Commun* 2011;2:440.
161. Zimprich A, Biskup S, Leitner P, et al. Mutations in LRRK2 cause autosomal-dominant parkinsonism with pleomorphic pathology. *Neuron* 2004;44:601-607.
162. Nguyen HN, Byers B, Cord B, et al. LRRK2 mutant iPSC-derived DA neurons demonstrate increased susceptibility to oxidative stress. *Cell Stem Cell* 2011;8:267-280.
163. Sanchez-Danes A, Richaud-Patin Y, Carballo-Carbajal I, et al. Disease-specific phenotypes in dopamine neurons from human iPS-based models of genetic and sporadic Parkinson's disease. *EMBO Mol Med* 2012;4:380-395.
164. Reinhardt P, Schmid B, Burbulla LF, et al. Genetic correction of a LRRK2 mutation in human iPSCs links parkinsonian neurodegeneration to ERK-dependent changes in gene expression. *Cell Stem Cell* 2013;12:354-367.
165. Seibler P, Graziotto J, Jeong H, Simunovic F, Klein C, Krainc D. Mitochondrial Parkin recruitment is impaired in neurons derived from mutant PINK1 induced pluripotent stem cells. *J Neurosci* 2011;31:5970-5976.
166. Cooper O, Seo H, Andrabi S, et al. Pharmacological rescue of mitochondrial deficits in iPSC-derived neural cells from patients with familial Parkinson's disease. *Sci Transl Med* 2012;4:141ra190.
167. Badger JL, Cordero-Llana O, Hartfield EM, Wade-Martins R. Parkinson's disease in a dish - Using stem cells as a molecular tool. *Neuropharmacology* 2013.
168. Imaizumi Y, Okano H. Modeling human neurological disorders with induced pluripotent stem cells. *J Neurochem* 2014;129:388-399.
169. Yagi T, Kosakai A, Ito D, et al. Establishment of induced pluripotent stem cells from centenarians for neurodegenerative disease research. *PLoS One* 2012;7:e41572.
170. Reyes JF, Olsson TT, Lamberts JT, Devine MJ, Kunath T, Brundin P. A cell culture model for monitoring alpha-synuclein cell-to-cell transfer. *Neurobiol Dis* 2014.
171. Mak SK, Huang YA, Iranmanesh S, et al. Small molecules greatly improve conversion of human-induced pluripotent stem cells to the neuronal lineage. *Stem Cells Int* 2012;2012:140427.
172. Sanders LH, Laganieri J, Cooper O, et al. LRRK2 mutations cause mitochondrial DNA damage in iPSC-derived neural cells from Parkinson's disease patients: reversal by gene correction. *Neurobiol Dis* 2014;62:381-386.
173. Aboud AA, Tidball AM, Kumar KK, et al. Genetic risk for Parkinson's disease correlates with alterations in neuronal manganese sensitivity between two human subjects. *Neurotoxicology* 2012;33:1443-1449.
174. Walz W. Role of astrocytes in the clearance of excess extracellular potassium. *Neurochem Int* 2000;36:291-300.
175. Piet R, Vargova L, Sykova E, Poulain DA, Oliet SH. Physiological contribution of the astrocytic environment of neurons to intersynaptic crosstalk. *Proc Natl Acad Sci U S A* 2004;101:2151-2155.
176. Heikkila RE, Sieber BA, Manzino L, Sonsalla PK. Some features of the nigrostriatal dopaminergic neurotoxin 1-methyl-4-phenyl-1,2,3,6-tetrahydropyridine (MPTP) in the mouse. *Mol Chem Neuropathol* 1989;10:171-183.
177. Chen PC, Vargas MR, Pani AK, et al. Nrf2-mediated neuroprotection in the MPTP mouse model of Parkinson's disease: Critical role for the astrocyte. *Proc Natl Acad Sci U S A* 2009;106:2933-2938.
178. Rappold PM, Tieu K. Astrocytes and therapeutics for Parkinson's disease. *Neurotherapeutics* 2010;7:413-423.
179. Mirza B, Hadberg H, Thomsen P, Moos T. The absence of reactive astrocytosis is indicative of a unique inflammatory process in Parkinson's disease. *Neuroscience* 2000;95:425-432.
180. Bonifati V, Rizzu P, van Baren MJ, et al. Mutations in the DJ-1 gene associated with autosomal recessive early-onset parkinsonism. *Science* 2003;299:256-259.

181. Mullett SJ, Hinkle DA. DJ-1 knock-down in astrocytes impairs astrocyte-mediated neuroprotection against rotenone. *Neurobiol Dis* 2009;33:28-36.
182. Mullett SJ, Hinkle DA. DJ-1 deficiency in astrocytes selectively enhances mitochondrial Complex I inhibitor-induced neurotoxicity. *J Neurochem* 2011;117:375-387.
183. Larsen NJ, Ambrosi G, Mullett SJ, Berman SB, Hinkle DA. DJ-1 knock-down impairs astrocyte mitochondrial function. *Neuroscience* 2011;196:251-264.
184. Halliday GM, Stevens CH. Glia: initiators and progressors of pathology in Parkinson's disease. *Mov Disord* 2011;26:6-17.
185. Lee HJ, Suk JE, Patrick C, et al. Direct transfer of alpha-synuclein from neuron to astroglia causes inflammatory responses in synucleinopathies. *J Biol Chem* 2010;285:9262-9272.
186. Gu XL, Long CX, Sun L, Xie C, Lin X, Cai H. Astrocytic expression of Parkinson's disease-related A53T alpha-synuclein causes neurodegeneration in mice. *Mol Brain* 2010;3:12.
187. Krencik R, Weick JP, Liu Y, Zhang ZJ, Zhang SC. Specification of transplantable astroglial subtypes from human pluripotent stem cells. *Nat Biotechnol* 2011;29:528-534.
188. Juopperi TA, Kim WR, Chiang CH, et al. Astrocytes generated from patient induced pluripotent stem cells recapitulate features of Huntington's disease patient cells. *Mol Brain* 2012;5:17.
189. Shaltouki A, Peng J, Liu Q, Rao MS, Zeng X. Efficient generation of astrocytes from human pluripotent stem cells in defined conditions. *Stem Cells* 2013;31:941-952.
190. Mormone E, D'Sousa S, Alexeeva V, Bederson MM, Germano IM. "Footprint-Free" Human Induced Pluripotent Stem Cell-Derived Astrocytes for In Vivo Cell-Based Therapy. *Stem Cells Dev* 2014.
191. Ebert AD, Yu J, Rose FF, Jr., et al. Induced pluripotent stem cells from a spinal muscular atrophy patient. *Nature* 2009;457:277-280.
192. Dimos JT, Rodolfa KT, Niakan KK, et al. Induced pluripotent stem cells generated from patients with ALS can be differentiated into motor neurons. *Science* 2008;321:1218-1221.
193. Marchetto MC, Carron ME, Acab A, et al. A model for neural development and treatment of Rett syndrome using human induced pluripotent stem cells. *Cell* 2010;143:527-539.
194. Urbach A, Bar-Nur O, Daley GQ, Benvenisty N. Differential modeling of fragile X syndrome by human embryonic stem cells and induced pluripotent stem cells. *Cell Stem Cell* 2010;6:407-411.
195. Cotzias GC, Van Woert MH, Schiffer LM. Aromatic amino acids and modification of parkinsonism. *N Engl J Med* 1967;276:374-379.
196. Buck K, Ferger B. L-DOPA-induced dyskinesia in Parkinson's disease: a drug discovery perspective. *Drug Discov Today* 2010;15:867-875.
197. Schenone M, Dancik V, Wagner BK, Clemons PA. Target identification and mechanism of action in chemical biology and drug discovery. *Nature chemical biology* 2013;9:232-240.
198. Kondo T, Asai M, Tsukita K, et al. Modeling Alzheimer's disease with iPSCs reveals stress phenotypes associated with intracellular Abeta and differential drug responsiveness. *Cell Stem Cell* 2013;12:487-496.
199. Egawa N, Inoue H. [ALS disease modeling and drug screening using patient-specific iPS cells]. *Rinsho Shinkeigaku* 2013;53:1020-1022.
200. Liu W, Deng Y, Liu Y, Gong W, Deng W. Stem cell models for drug discovery and toxicology studies. *Journal of biochemical and molecular toxicology* 2013;27:17-27.
201. Ko HC, Gelb BD. Concise review: drug discovery in the age of the induced pluripotent stem cell. *Stem Cells Transl Med* 2014;3:500-509.
202. Kiskinis E, Eggan K. Progress toward the clinical application of patient-specific pluripotent stem cells. *J Clin Invest* 2010;120:51-59.
203. Skibinski G, Finkbeiner S. Drug discovery in Parkinson's disease-Update and developments in the use of cellular models. *Int J High Throughput Screen* 2011;2011:15-25.
204. Scott CW, Peters MF, Dragan YP. Human induced pluripotent stem cells and their use in drug discovery for toxicity testing. *Toxicol Lett* 2013;219:49-58.
205. Morizane A, Doi D, Kikuchi T, et al. Direct comparison of autologous and allogeneic transplantation of iPSC-derived neural cells in the brain of a non-human primate. *Stem cell reports* 2013;1:283-292.
206. Guha P, Morgan JW, Mostoslavsky G, Rodrigues NP, Boyd AS. Lack of immune response to differentiated cells derived from syngeneic induced pluripotent stem cells. *Cell Stem Cell* 2013;12:407-412.
207. Taylor CJ, Peacock S, Chaudhry AN, Bradley JA, Bolton EM. Generating an iPSC bank for HLA-matched tissue transplantation based on known donor and recipient HLA types. *Cell Stem Cell* 2012;11:147-152.
208. Xue Y, Cai X, Wang L, et al. Generating a non-integrating human induced pluripotent stem cell bank from urine-derived cells. *PLoS One* 2013;8:e70573.
209. Beers J, Linask KL, Chen JA, et al. A cost-effective and efficient reprogramming platform for large-scale production of integration-free human induced pluripotent stem cells in chemically defined culture. *Scientific reports* 2015;5:11319.

210. Hu BY, Weick JP, Yu J, et al. Neural differentiation of human induced pluripotent stem cells follows developmental principles but with variable potency. *Proc Natl Acad Sci U S A* 2010;107:4335-4340.
211. Laurent LC, Ulitsky I, Slavin I, et al. Dynamic changes in the copy number of pluripotency and cell proliferation genes in human ESCs and iPSCs during reprogramming and time in culture. *Cell Stem Cell* 2011;8:106-118.
212. Chin MH, Mason MJ, Xie W, et al. Induced pluripotent stem cells and embryonic stem cells are distinguished by gene expression signatures. *Cell Stem Cell* 2009;5:111-123.
213. Gore A, Li Z, Fung HL, et al. Somatic coding mutations in human induced pluripotent stem cells. *Nature* 2011;471:63-67.
214. Sun X, Tan G, Liew R. Future challenges for patient-specific induced pluripotent stem cells in cardiovascular medicine. *Expert review of cardiovascular therapy* 2012;10:943-945.