



LUND UNIVERSITY

Given breast cancer, does breast size matter? Data from a prospective breast cancer cohort.

Markkula, Andrea; Bromée, Anna; Henningson, Maria; Hietala, Maria; Ringberg, Anita; Ingvar, Christian; Rose, Carsten; Jernström, Helena

Published in:
Cancer Causes and Control

DOI:
[10.1007/s10552-012-0008-9](https://doi.org/10.1007/s10552-012-0008-9)

2012

[Link to publication](#)

Citation for published version (APA):

Markkula, A., Bromée, A., Henningson, M., Hietala, M., Ringberg, A., Ingvar, C., Rose, C., & Jernström, H. (2012). Given breast cancer, does breast size matter? Data from a prospective breast cancer cohort. *Cancer Causes and Control*, 23(8), 1307-1316. <https://doi.org/10.1007/s10552-012-0008-9>

Total number of authors:
8

General rights

Unless other specific re-use rights are stated the following general rights apply:
Copyright and moral rights for the publications made accessible in the public portal are retained by the authors and/or other copyright owners and it is a condition of accessing publications that users recognise and abide by the legal requirements associated with these rights.

- Users may download and print one copy of any publication from the public portal for the purpose of private study or research.
- You may not further distribute the material or use it for any profit-making activity or commercial gain
- You may freely distribute the URL identifying the publication in the public portal

Read more about Creative commons licenses: <https://creativecommons.org/licenses/>

Take down policy

If you believe that this document breaches copyright please contact us providing details, and we will remove access to the work immediately and investigate your claim.

LUND UNIVERSITY

PO Box 117
221 00 Lund
+46 46-222 00 00

Given breast cancer, does breast size matter?

Given breast cancer, does breast size matter? *Data from a prospective breast cancer cohort*

Andrea Markkula¹, Anna Bromée¹, Maria Henningson^{1,2}, Maria Hietala^{1,3}, Anita Ringberg⁴,
Christian Ingvar⁵, Carsten Rose⁶, Helena Jernström¹

1 Department of Oncology, Clinical Sciences, Lund University, Barngatan 2B, Lund SE-221 85, Sweden

2 Sahlgrenska University Hospital, Göteborg, Göteborg SE-413 45 Sweden

3 Vrinnevi Hospital, Norrköping, Norrköping SE-601 82 Sweden

4 Department of Plastic and Reconstructive Surgery, Skane University Hospital Malmö, Clinical Sciences, Lund University, Sweden

5 Department of Surgery, Skane University Hospital Lund, Clinical Sciences, Lund University, Sweden

6 Division of Cancer and Haematology, Skane University Hospital, Sweden

Corresponding author: Helena Jernström, Department of Oncology, Clinical Sciences, Barngatan 2B, SE-221 85 Lund, Sweden
E-mail. Helena.Jernstrom@med.lu.se Tel: +46 46 17 76 19, Fax +46 46 14 73 27

Given breast cancer, does breast size matter?

Abstract

Purpose: Body mass index (BMI), waist-to-hip ratio (WHR) and tumor characteristics affect disease-free survival. Larger breast size may increase breast cancer risk but its influence on disease-free survival is unclear. The purpose of this study was to elucidate whether breast size independently influenced disease-free survival in breast cancer patients. *Methods:* Body measurements were obtained pre-operatively from 772 breast cancer patients in a population-based ongoing cohort from southern Sweden. The research nurse measured breast volumes with plastic cups used by plastic surgeons doing breast reductions. Clinical data were obtained from patient charts and pathology reports. *Results:* Patients with a BMI $\geq 25 \text{ kg/m}^2$ had larger tumors ($P < 0.001$) and more axillary nodal involvement ($P = 0.030$). Patients with a WHR > 0.85 had larger tumors ($P = 0.013$), more advanced histological grade ($P = 0.0016$), and more axillary nodal involvement ($P = 0.012$). Patients with right+left breast volume $\geq 850 \text{ mL}$ were more likely to have larger tumor sizes ($P = 0.018$), more advanced histological grade ($P = 0.031$), and more axillary nodal involvement ($P = 0.025$). There were 62 breast cancer events during the 7-year follow-up. Breast volume $\geq 850 \text{ mL}$ was associated with shorter disease-free survival ($P = 0.004$) and distant metastasis-free survival ($P = 0.001$) in patients with estrogen receptor (ER) positive tumors independent of other anthropometric measurements and age. In patients with ER-positive tumors, breast size was an independent predictor of shorter disease-free (HR 3.64; 95%CI 1.42-9.35) and distant metastasis-free survival (HR 6.33; 95%CI 1.36-29.43), adjusted for tumor characteristics, BMI, age, and treatment. *Conclusion:* A simple and cheap anthropometric measurement with standardized tools may help identify a subgroup of patients in need of tailored breast cancer therapy.

Keywords: Breast Cancer, Prognosis, Body Mass Index, Waist-to-Hip Ratio, Breast Size

Given breast cancer, does breast size matter?

Introduction

Over 7000 women out of the nine million Swedish inhabitants are diagnosed with breast cancer every year; 1500 die yearly from their disease(1). The numbers are comparable across the western world, although Sweden has a relatively lower mortality rate compared to several other western countries (2). Under-treatment of breast cancer increases the risk of recurrence, whereas over-treatment subjects patients to unnecessary treatment side-effects. The identification of factors that influence disease-free survival allows for a better tailoring of treatment intensity and treatment modality.

Certain anthropometric factors influence prognosis. A high body mass index (BMI) was associated with a worse prognosis in both pre- and postmenopausal breast cancer patients(3-7). Obese postmenopausal women presented with more axillary involvement and had shorter disease-free survival than leaner patients(5, 8). Whether a high BMI is associated with estrogen receptor (ER) and progesterone receptor (PR) status is unclear. Some(9, 10), but not all(11), studies have suggested an increased proportion of ER-positive breast cancer cells among obese postmenopausal patients compared to leaner patients.

Waist circumference, often used as a measurement of central adiposity, is another anthropometric factor associated with a worse breast cancer prognosis in both pre- and postmenopausal women(12, 13). A large waist circumference was associated with a more advanced histological grade in postmenopausal patients(12) and larger tumor sizes in non-hispanic white premenopausal breast cancer patients, but not in hispanic breast cancer patients(13). In premenopausal breast cancer patients, an association between a high waist-to-hip ratio (WHR) and a worse outcome has been suggested, also after adjustment for BMI(14). For postmenopausal patients, a high WHR was not associated with disease-free survival after adjustment for BMI as reviewed by Harvie *et al.*(14). However, others found WHR to be an

Given breast cancer, does breast size matter?

independent prognostic factor even after taking BMI into account(15). A high WHR may be used as a proxy marker for a high testosterone/estrogen ratio and, perhaps more importantly, for insulin resistance and high levels of fasting insulin, pro-insulin, and C-peptide in women(16-18). Hyperinsulinemia may be associated with a worse outcome of early breast cancer(19-21).

Breast size may be associated with more aggressive tumor characteristics at diagnosis in pre- as well as postmenopausal women(22-26). Even though breast size is strongly correlated with BMI(27), only one third of the genes contributing to breast size has been shown to influence BMI(28). Larger breast size was associated with higher IGF-1 levels in young nulliparous women not using oral contraceptives(29). In addition, a large breast size could be used as a predictor of type II diabetes(30), even when adjusting for BMI and WHR. Breast cancer patients with type II diabetes and ER-negative breast cancer had a more than 2-fold higher risk for distant metastasis compared to patients without diabetes, but this was not seen in patients with ER-positive tumors (31).

Studies investigating breast size in relation to breast cancer have often used brassiere cup size as a size measure(24, 28, 32). However, the different manufacturers have incongruous volume measurement for their cup sizes(33). Moreover, cup size does not take rib cage circumference into account(33). Actual breast volume measurement using plastic cups used for measuring breast volume prior to reduction mammoplasties leads to more reproducible results(34), and allows for an evaluation of whether breast volume *per se* has an impact on tumor disposition or growth pattern.

The identification of prognostic factors allows for a better tailoring of treatment. Prognostic factors may also help identify pathophysiological pathways and novel therapeutic modalities. We hypothesize that anthropometric factors can be used as proxy markers for insulin and IGF-1 levels and the estrogen/testosterone ratio, factors that are known to

Given breast cancer, does breast size matter?

influence tumor characteristics and survival. The aim of this study was to examine the relationship between anthropometric factors, tumor characteristics, and disease-free survival, and to investigate whether breast size is an independent prognostic factor.

Materials and Methods

Women assessed preoperatively for a primary breast cancer at the Skane University Hospital in Lund, Sweden, were invited to take part in an ongoing prospective study regarding genetic and non-genetic factors that could be associated with breast cancer prognosis. A total of 819 patients were included between October 2002 and June 2010. The patients were invited to participate regardless of ethnic background, age and stage. Those who had been diagnosed and treated for another type of cancer within the past 10 years were not eligible to participate. We excluded 47 pre-treated patients [interstitial laser thermotherapy (n=11 + one uncertain) or neoadjuvant systemic therapy (n=34 + one patient who received treatment for another cancer between the primary surgery and re-operation)]. The original cohort of 819 patients was therefore limited to 772. The study was approved by the Ethics Committee of Lund University.

Written informed consent was collected during the preoperative visit at the Department of Surgery at the Skane University Hospital in Lund. Body measurements and breast volumes were measured at the preoperative visit. All patients filled out a preoperative questionnaire, including questions on birth date, coffee consumption, smoking, alcohol intake, use of exogenous hormones and concomitant medications, and reproductive history. There was no question regarding ethnicity. However, most women included were ethnic Swedes. The pre-operative visit usually took place a few days prior to surgery.

Given breast cancer, does breast size matter?

Trained research nurses measured the volume of each breast, with the patient in a sitting position and her arms hanging down, using plastic cups employed by plastic surgeons doing breast reductions and reconstructions. The volume measurements obtained from such cups have been used since 1994 together with a computerized program to prioritize patients on the waiting list for breast reductions at the Department of Plastic and Reconstructive Surgery at Skane University Hospital in Malmö, Sweden. These cups come in the following 11 sizes: 200, 275, 350, 500, 650, 800, 950, 1150, 1325, 1500 and 2000 mL(33). 'Breast volume' was defined as the sum of the volumes of the right and left breast.

A previous report from this cohort identified 850mL as the median breast volume in the 355 first included patients(33). This volume is similar to the median volume among B cup users obtained in an independent cohort(26). Recent studies indicate that the most common cup-size among women is B(32, 33). Breast volume of 850mL was therefore chosen as a cut-off value between small and large breast volume. Central obesity was considered to be present if the WHR was above 0.85 or if the waist circumference exceeded 80 cm (35). We classified patients according to age (<50 years or ≥50 years of age) instead of reported menopausal status. This cut-off was chosen since postmenopausal patients with previous hormone replacement therapy (HRT)-use may have had HRT-induced bleedings and could have been misclassified as premenopausal. Patients who had had their uterus removed before menopause but not their ovaries may also have been misclassified.

Additional baseline information, including type of surgery, sentinel node biopsy, and axillary node dissection, were obtained from each patient's chart. Tumor size, histological type and grade, axillary node involvement, signs of distant metastases, and ER and PR status were obtained from each patient's pathology report. Tumors with >10% positive nuclear staining were considered receptor positive (36). All tumors were analyzed at the Department

Given breast cancer, does breast size matter?

of Pathology at Skane University Hospital in Lund. HER-2/neu status was routinely analyzed as of November 2005.

Skane University Hospital in Lund is one of seven hospitals in the South Swedish Health Care Region performing breast cancer surgery. Its catchment area serves almost 300,000 inhabitants. Patients with breast cancer are not referred to other hospitals for surgery, so this study population is population-based. During the same period as this cohort was accrued, there were 1543 patients who went through breast cancer surgery in Lund. The mean age was 61.15 years, ER-status was reported in 91.2% of the patients and PR-status was reported in 90.6% of the patients; 85.7% of the tumors were ER-positive and 69.8% of the tumors were PR-positive. Approximately 50% of the patients in Lund were thus included in this study and were similar to non-included patients with respect to age, ER- and PR-status. Most non-included patients were missed due to lack of available research nurses. Approximately five percent of the patients were missed due to unverified diagnosis at the time of surgery.

The follow-up rates for the breast cancer patients in our cohort who were alive and recurrence-free at each follow-up were as follows for the 1-year, 2-year, 3-year, 5-year, and 7-year follow-up: 98.0%, 95.1%, 92.4%, 94.6%, and 90.8%, respectively.

Statistics

The statistical analysis was performed with the software SPSS 18.0. In the screening detection analysis we chose to exclude women <45 years (n=71), as Lund's screening program for breast cancer previously started at age 45. In the breast size analyses, women who had undergone previous breast operations (n=89) or lacked breast size measurements (n=6) were excluded. BMI, WHR, and waist measurements were not normally distributed. Therefore the variables were either dichotomized or transformed using the natural logarithm. In the survival

Given breast cancer, does breast size matter?

analysis, two forms of events were evaluated; any breast cancer event or distant metastases. A breast cancer event was defined as an ipsi-, contralateral-, regional-, or distant metastasis. Patients with *in situ* tumors (n=28) and patients with metastasis detected on the postoperative metastasis screen within three months of inclusion (n=5) were excluded from the survival analysis. After exclusion, there were 62 patients with any type of breast cancer event during the seven-year follow-up, of which 40 had distant metastasis. Breast cancer-free survival was calculated from inclusion to diagnosis of a breast cancer event or distant metastasis prior to June 30 2010, last study follow-up or death due to non-breast cancer related causes. Chi-square analyses were used to investigate categorical variables: pathological tumor size (pT; 1-4 or 2+), pathological axillary lymph node involvement (pN; yes/no) or number of involved lymph nodes (0, 1-3, 4+), and histological grade (I-III or I-II *versus* III) in relation to age and body constitution. Kaplan-Meier was used to calculate disease-free survival. Cox regression was used to obtain adjusted hazard ratios (HR), adjusting for age, pT, lymph node involvement, and histological grade. A *P*-value <0.05 was considered significant. All *P*-values were two-tailed.

Results

The characteristics of the patients are presented in Table 1. Age at breast cancer diagnosis ranged from 25 to 99 years, with a median of 60.4 years. The median breast volume was 1000mL, the median WHR was 0.85 and the median BMI was 24.8. Previous HRT-use among women aged 50 years or older did not differ according to BMI or breast size. Previous HRT use among women aged ≥ 50 years differed according to WHR, women with a WHR ≤ 0.85 were more likely to have used HRT than women with a WHR > 0.85 [Odds Ratio (OR) 1.75; 95%CI 1.15-2.66].

Given breast cancer, does breast size matter?

Tumor characteristics

Tumor characteristics for the 772 women are presented in Table 2. Tumor size, histological grade, axillary nodal involvement, and the proportion of screening detected tumors differed according to age and body constitution.

Disease-free survival in relation to age and anthropometric factors

The median follow-up was 2.94 years (IQR 1.03-4.90 years) in the 739 patients with invasive tumors without distant metastasis detected on the postoperative metastasis screen. Patients younger than 50 years had shorter disease-free survival ($P=0.001$) and borderline significantly shorter distant metastasis-free survival ($P=0.047$) compared to older patients (Figure 1a). Patients with a BMI ≥ 25 kg/m² had a non-significantly shorter disease-free and distant metastasis-free survival (Figure 1b). This weak association was seen in both younger and older patients. No association between BMI and disease-free survival in relation to ER-status was observed.

We then studied fat distribution. A WHR >0.85 was associated with shorter disease-free survival ($P=0.036$) and distant metastasis-free survival ($P=0.035$; Figure 1c). A WHR >0.85 was associated with shorter distant metastasis-free survival in both age categories but was only significant in patients 50 years or older with a WHR >0.85 ($P=0.015$). Patients with a waist ≥ 80 cm had significantly shorter disease-free survival ($P=0.042$) but only non-significantly shorter distant metastasis-free survival ($P=0.088$; Figure 1d).

Fifty-eight percent of the study population had breast volume ≥ 850 mL. Breast volume ≥ 850 mL was associated with shorter disease-free survival ($P=0.006$). After stratification according to ER status, breast volume ≥ 850 mL was associated with shorter disease-free

Given breast cancer, does breast size matter?

($P=0.004$; Figure 2a) and distant metastasis-free survival ($P=0.001$; Figure 2b), in patients with ER-positive, but not ER-negative, tumors.

Multivariate analyses of disease-free survival

In three separate Cox regression models, breast volume ≥ 850 mL predicted disease-free and distant metastasis-free survival better in patients with ER-positive tumors than did BMI, WHR, or waist circumference adjusting for tumor characteristics, age, and endocrine treatment. The highest hazard ratios with large breast size were obtained in the model adjusting for waist circumference, Table 3.

Adding HRT to the model did not materially change the results of any of the models. In all three models, breast volume ≥ 850 mL was the strongest predictor of disease-free survival. Patients with breast volume ≥ 850 mL and ER-positive tumors had shorter disease-free and distant metastasis-free survival compared to patients with smaller breasts, regardless of age, BMI, WHR, and waist circumference. The results remained materially the same after further adjustment for type of surgery (modified radical mastectomy or lumpectomy). Type of surgery was not associated with early breast cancer events ($P=0.73$).

Discussion

The main finding of this study was that breast volume ≥ 850 mL in women with ER-positive tumors was associated with significantly shorter disease-free survival compared to women with smaller breasts, independent of age, BMI, WHR and waist circumference. Consistent with the findings of earlier studies(22-26), women with larger breasts presented with more aggressive tumor characteristics than women with smaller breasts. In the present study, larger

Given breast cancer, does breast size matter?

breast size alone was associated with shorter disease-free survival – regardless of other anthropometric measurements, age, histological grade, and axillary lymph node involvement of the patient.

The results of this study need to be further explored to elucidate the mechanism underlying our finding of an increased risk for an early breast cancer event in women with larger breast size. Investigating fat/gland ratio or mammographic density in this group of women may be of value(27), but has not been part of this study. All body measurements were obtained by trained nurses prior to surgery and subsequent events, minimizing the risk for bias. Since this material is taken from a predominantly Caucasian population it is unclear whether these results are applicable to patients of other ethnicities. Moreover, given that many previous studies were carried out in patient groups with a greater range of BMI than was observed in this study population(3, 9), it is unclear whether the associations found here are linear or would change at more extreme values of BMI. In the multivariate models we chose to include BMI and WHR as linear variables, to minimize residual confounding.

One plausible mechanism for our observation of an association between breast size and prognosis may be increased levels of IGF-1(37). Some studies indicated a clear association between cancer and the insulin/IGF-1 axis(38-41). Three of the studies demonstrated the involvement of these factors in breast cancer(39-41). The meta-analyses showed that higher IGF-1 levels were only associated with risk for ER-positive breast cancer(41). In the follicular phase of the menstrual cycle, IGF-1 levels were positively associated with breast size in young nulligravid women not using oral contraceptives(29). In line with this, Hartmann *et al.* showed that the success rate of breast augmenting estrogen stimulation was dependent on a subsequent increase of IGF-1 concentrations in the women tested(42). Moreover, high IGF-1 levels have been linked to mammographic density in premenopausal women(43). Mammographic density is significantly associated with breast

Given breast cancer, does breast size matter?

cancer mortality(44). A larger breast size may thus be a surrogate marker for high IGF-1 levels, which would be of interest when investigating disease-free survival in patients with larger breasts as the IGF-1 receptor (IGF1R) is currently one of the most studied molecular targets in the field of oncology(45). Conversely, the body constitution of women with larger breasts, low to normal BMI and low WHR reflects an estrogenic profile(18, 26, 46), which could impact on tumor growth and hormone receptor status. A recent report from a subset of the current patient cohort, showed that certain androgen receptor (AR) genotypes were associated with significantly larger breast size, but not with increased WHR. These AR genotypes were also significantly associated with shorter disease-free survival (47).

A WHR >0.85 was associated with somewhat shorter disease-free survival and more aggressive tumor characteristics. A high WHR can be an indicator of a number of unfavourable conditions, such as an elevated testosterone/estrogen ratio(17, 48), cortisol surges in response to stress or metabolic issues(17), or hyperinsulinemia(18, 49). Accordingly, hyperinsulinemia-associated (diabetes type II associated) WHR increase could be of importance for breast cancer prognosis. A mouse model showed that visceral fat increased inflammation and elevated aromatase expression in the mammary gland(50). Measurements of circulating androgens, insulin, IGF-1, and cortisol may be beneficial for patients with a high WHR, as it may provide information on which pathway to target during tailored breast cancer treatment. There are currently ongoing trials with metformin(51) and a phase II trial of the nonsteroidal antiandrogen bicalutamide enrolling women with ER-/PR-/AR+ breast cancers (ClinicalTrials.gov Identifier NCT00468715)(51). WHR was not nearly as strongly associated with prognosis as breast volume was in the present study.

Concordant with earlier studies(5), patients in this cohort with a BMI ≥ 25 kg/m² had larger tumors. A cut-off at BMI ≥ 30 kg/m² generated similar results [data not shown]. No association between BMI ≥ 25 kg/m² and hormone receptor status was observed, in contrast to

Given breast cancer, does breast size matter?

findings by Enger *et al.*(9). In Enger's study, only 73% of the tumors were ER-positive compared to over 85% in Lund.

In spite of larger tumors in patients with a higher BMI, we found only a non-significant association between obesity and breast cancer prognosis in the current study. This is in contrast to the findings of Petrelli *et al.* in a study of 2852 postmenopausal breast cancer deaths with a 14 year follow-up(8). Furthermore, in the present study, no significant association between BMI and disease-free survival among younger women was observed, as opposed to earlier findings(6). A cut-off at BMI ≥ 30 kg/m² generated similar results [data not shown]. The discrepant results may in part be due to the categorization according to age in the present study as opposed to the categorization according to menopausal status or the shorter follow-up. However, a more likely explanation may be that fat distribution matters more than fat accumulation.

In conclusion, the present study showed significantly shorter disease-free survival for breast cancer patients with ER-positive tumors and breast volume ≥ 850 mL, regardless of age, WHR, waist circumference, and BMI. Our results warrant confirmation in an independent cohort. If confirmed, a simple anthropometric measurement that could rapidly and cheaply be obtained using plastic surgery cups, could yield important prognostic information beyond that obtained through the pathology report and clinical assessment. The results may then need to be taken into account to tailor treatment intensity and modality.

Given breast cancer, does breast size matter?

Acknowledgements

This study was supported by grants from the Swedish Cancer Society, the Swedish Research Council, the Medical Faculty at Lund University, the Mrs. Berta Kamprad's Foundation, the Gunnar Nilsson Foundation, the Crafoord Foundation, the Konung Gustaf V Jubileumsfond (104152), the South Swedish Health Care Region (Region Skåne ALF), Swedish Breast Cancer Group (BRO), and the Lund Hospital Fund.

We thank our research nurses Linda Ågren, Anette Möller, Karin Henriksson, Anna Weddig, and Maj-Britt Hedenblad. We thank Dr Eric Dryver for proofreading the manuscript.

Figure legends

Fig 1 Kaplan-Meier estimate of the distant metastasis-free survival in relation to age and body constitution.

a) Distant metastasis-free survival in relation to age. The grey line illustrates disease-free survival in patients <50 years, the black line illustrates disease-free survival in patients ≥ 50 years. Numbers below the figure indicate participants each year at follow-up, the upper line referring to patients <50 years, the lower line referring to patients ≥ 50 years. (Log-Rank; $P=0.047$).

b) Distant metastasis-free survival in relation to BMI. The grey line illustrates disease-free survival in patients with BMI <25, the black line illustrates disease-free survival in patients with BMI ≥ 25 . The number of patients in each subgroup is indicated below the graph. (Log-Rank; $P=0.075$).

c) Distant metastasis-free survival in relation to WHR. The grey line illustrates disease-free survival in patients with WHR ≤ 0.85 , the black line illustrates disease-free survival in patients

Given breast cancer, does breast size matter?

with WHR >0.85 . Numbers below the figure indicate participants each year at follow-up, upper line referring to WHR ≤ 0.85 , the lower line referring to WHR >0.85 . (Log-Rank; $P=0.035$).

d) Distant metastasis-free survival in relation to waist circumference. The grey line illustrates disease-free survival in patients with waist circumference <80 cm, the black line illustrates disease-free survival in patients with waist circumference ≥ 80 cm. Numbers below the figure indicate participants each year at follow-up, the upper line referring to waist circumference <80 cm, the lower line referring to waist circumference ≥ 80 cm (Log-Rank; $P=0.088$).

Fig 2 Kaplan-Meier estimate of the disease-free survival and distant metastasis-free survival in relation to breast size.

a) Disease-free survival in patients with ER-positive tumors. The grey line indicates disease-free survival in patients with a breast size <850 mL, the black line indicates disease-free survival in patients with a breast size ≥ 850 mL. The number of patients in each subgroup is indicated below the graph. (Log-Rank; $P=0.004$).

b) Distant metastases-free survival in patients with ER-positive tumors. The grey line indicates disease-free survival in patients with a breast size <850 mL, the black line indicates disease-free survival in patients a breast size ≥ 850 mL. The number of patients in each subgroup is indicated below the graph (Log-Rank; $P=0.001$).

Conflict of interest

The authors declare that they have no conflict of interest.

Given breast cancer, does breast size matter?

References

1. The National Board of Health and Welfare. (2010) Cancer Incidence in Sweden. (Cited May 30, 2012)
<http://www.socialstyrelsen.se/Lists/Artikelkatalog/Attachments/18530/2011-12-15.pdf>
2. Ferlay J, Shin HR, Bray F, Forman D, Mathers C, Parkin DM. (2008) GLOBOCAN 2008 v1.2, Cancer Incidence and Mortality Worldwide: IARC CancerBase No. 10 [Internet]. Lyon, France: International Agency for Research on Cancer; 2010.
3. Han D, Nie J, Bonner MR, et al. (2006) Lifetime adult weight gain, central adiposity, and the risk of pre- and postmenopausal breast cancer in the Western New York exposures and breast cancer study. *Int J Cancer*. 119: 2931-7.
4. Carmichael AR. (2006) Obesity and prognosis of breast cancer. *Obes Rev*. 7: 333-40.
5. Carmichael AR, Bates T. (2004) Obesity and breast cancer: a review of the literature. *Breast*. 13: 85-92.
6. Loi S, Milne RL, Friedlander ML, et al. (2005) Obesity and outcomes in premenopausal and postmenopausal breast cancer. *Cancer Epidemiol Biomarkers Prev*. 14: 1686-91.
7. Protani M, Coory M, Martin JH. (2010) Effect of obesity on survival of women with breast cancer: systematic review and meta-analysis. *Breast Cancer Res Treat*. 123: 627-35.
8. Petrelli JM, Calle EE, Rodriguez C, Thun MJ. (2002) Body mass index, height, and postmenopausal breast cancer mortality in a prospective cohort of US women. *Cancer Causes Control*. 13: 325-32.
9. Enger SM, Ross RK, Paganini-Hill A, Carpenter CL, Bernstein L. (2000) Body size, physical activity, and breast cancer hormone receptor status: results from two case-control studies. *Cancer Epidemiol Biomarkers Prev*. 9: 681-7.
10. Suzuki R, Orsini N, Saji S, Key TJ, Wolk A. (2009) Body weight and incidence of breast cancer defined by estrogen and progesterone receptor status--a meta-analysis. *Int J Cancer*. 124: 698-712.
11. Pinheiro RL, Sarian LO, Pinto-Neto AM, Morais S, Costa-Paiva L. (2009) Relationship between body mass index, waist circumference and waist to hip ratio and the steroid hormone receptor status in breast carcinoma of pre- and postmenopausal women. *Breast*. 18: 8-12.
12. Healy LA, Ryan AM, Carroll P, et al. (2010) Metabolic syndrome, central obesity and insulin resistance are associated with adverse pathological features in postmenopausal breast cancer. *Clin Oncol (R Coll Radiol)*. 22: 281-8.
13. Baumgartner KB, Hunt WC, Baumgartner RN, et al. (2004) Association of body composition and weight history with breast cancer prognostic markers: divergent pattern for Hispanic and non-Hispanic White women. *Am J Epidemiol*. 160: 1087-97.
14. Harvie M, Hooper L, Howell AH. (2003) Central obesity and breast cancer risk: a systematic review. *Obes Rev*. 4: 157-73.
15. Borugian MJ, Sheps SB, Kim-Sing C, et al. (2003) Waist-to-hip ratio and breast cancer mortality. *Am J Epidemiol*. 158: 963-8.
16. Jernström H, Barrett-Connor E. (1999) Obesity, weight change, fasting insulin, proinsulin, C-peptide, and insulin-like growth factor-1 levels in women with and without breast cancer: the Rancho Bernardo Study. *J Womens Health Gend Based Med*. 8: 1265-72.

Given breast cancer, does breast size matter?

17. Björntorp P. (1997) Hormonal control of regional fat distribution. *Hum Reprod.* 12 Suppl 1: 21-5.
18. Hollmann M, Runnebaum B, Gerhard I. (1997) Impact of waist-hip-ratio and body-mass-index on hormonal and metabolic parameters in young, obese women. *Int J Obes Relat Metab Disord.* 21: 476-83.
19. Goodwin PJ, Ennis M, Pritchard KI, et al. (2002) Fasting insulin and outcome in early-stage breast cancer: results of a prospective cohort study. *J Clin Oncol.* 20: 42-51.
20. Bruning PF, Bonfrer JM, van Noord PA, Hart AA, de Jong-Bakker M, Nooijen WJ. (1992) Insulin resistance and breast-cancer risk. *Int J Cancer.* 52: 511-6.
21. Del Giudice ME, Fantus IG, Ezzat S, McKeown-Eyssen G, Page D, Goodwin PJ. (1998) Insulin and related factors in premenopausal breast cancer risk. *Breast Cancer Res Treat.* 47: 111-20.
22. Sellaheva C, Nightingale P, Carmichael AR. (2008) Women with large breasts are at an increased risk of advanced breast cancer. *Int Semin Surg Oncol.* 5: 16.
23. Hsieh CC, Trichopoulos D. (1991) Breast size, handedness and breast cancer risk. *Eur J Cancer.* 27: 131-5.
24. Hall HI, Coates RJ, Uhler RJ, et al. (1999) Stage of breast cancer in relation to body mass index and bra cup size. *Int J Cancer.* 82: 23-7.
25. Ingram DM, Huang HY, Catchpole BN, Roberts A. (1989) Do big breasts disadvantage women with breast cancer? *Aust N Z J Surg.* 59: 115-7.
26. Hoe AL, Mullee MA, Royle GT, Guyer PB, Taylor I. (1993) Breast size and prognosis in early breast cancer. *Ann R Coll Surg Engl.* 75: 18-22.
27. Sung J, Song YM, Stone J, Lee K, Kim SY. (2010) Association of body size measurements and mammographic density in Korean women: the Healthy Twin study. *Cancer Epidemiol Biomarkers Prev.* 19: 1523-31.
28. Wade TD, Zhu G, Martin NG. (2010) Body mass index and breast size in women: same or different genes? *Twin Res Hum Genet.* 13: 450-4.
29. Jernström H, Olsson H. (1997) Breast size in relation to endogenous hormone levels, body constitution, and oral contraceptive use in healthy nulligravid women aged 19-25 years. *Am J Epidemiol.* 145: 571-80.
30. Ray JG, Mohllajee AP, van Dam RM, Michels KB. (2008) Breast size and risk of type 2 diabetes mellitus. *CMAJ.* 178: 289-95.
31. Schrauder MG, Fasching PA, Haberle L, et al. (2011) Diabetes and prognosis in a breast cancer cohort. *J Cancer Res Clin Oncol.* 137: 975-83.
32. Kusano AS, Trichopoulos D, Terry KL, Chen WY, Willett WC, Michels KB. (2006) A prospective study of breast size and premenopausal breast cancer incidence. *Int J Cancer.* 118: 2031-4.
33. Ringberg A, Bågeman E, Rose C, Ingvar C, Jernström H. (2006) Of cup and bra size: reply to a prospective study of breast size and premenopausal breast cancer incidence. *Int J Cancer.* 119: 2242-3; author reply 4.
34. Strombeck JO, Malm M. (1986) Priority grouping in a waiting list of patients for reduction mammoplasty. *Ann Plast Surg.* 17: 498-502.
35. No authors listed. (2000) Obesity: preventing and managing the global epidemic. Report of a WHO consultation. *World Health Organization technical report series.* 894: i-xii, 1-253.
36. Bågeman E, Ingvar C, Rose C, Jernström H. (2008) Coffee consumption and CYP1A2*1F genotype modify age at breast cancer diagnosis and estrogen receptor status. *Cancer Epidemiol Biomarkers Prev.* 17: 895-901.
37. Jernström H, Sandberg T, Bågeman E, Borg Å, Olsson H. (2005) Insulin-like growth factor-1 (IGF1) genotype predicts breast volume after pregnancy and hormonal

Given breast cancer, does breast size matter?

contraception and is associated with circulating IGF-1 levels: implications for risk of early-onset breast cancer in young women from hereditary breast cancer families. *British Journal of Cancer*. 92: 857-66.

38. Pollak M. (2008) Insulin and insulin-like growth factor signalling in neoplasia. *Nat Rev Cancer*. 8: 915-28.

39. Hankinson SE, Willett WC, Colditz GA, et al. (1998) Circulating concentrations of insulin-like growth factor-I and risk of breast cancer. *Lancet*. 351: 1393-6.

40. Gee JM, Robertson JF, Gutteridge E, et al. (2005) Epidermal growth factor receptor/HER2/insulin-like growth factor receptor signalling and oestrogen receptor activity in clinical breast cancer. *Endocr Relat Cancer*. 12 Suppl 1: S99-S111.

41. Key TJ, Appleby PN, Reeves GK, Roddam AW. (2010) Insulin-like growth factor 1 (IGF1), IGF binding protein 3 (IGFBP3), and breast cancer risk: pooled individual data analysis of 17 prospective studies. *The lancet oncology*. 11: 530-42.

42. Hartmann BW, Laml T, Kirchengast S, Albrecht AE, Huber JC. (1998) Hormonal breast augmentation: prognostic relevance of insulin-like growth factor-I. *Gynecol Endocrinol*. 12: 123-7.

43. Diorio C, Pollak M, Byrne C, et al. (2005) Insulin-like growth factor-I, IGF-binding protein-3, and mammographic breast density. *Cancer Epidemiol Biomarkers Prev*. 14: 1065-73.

44. Chiu SY, Duffy S, Yen AM, Tabar L, Smith RA, Chen HH. (2010) Effect of baseline breast density on breast cancer incidence, stage, mortality, and screening parameters: 25-year follow-up of a Swedish mammographic screening. *Cancer Epidemiol Biomarkers Prev*. 19: 1219-28.

45. Heidegger I, Pircher A, Klocker H, Massoner P. (2011) Targeting the insulin-like growth factor network in cancer therapy. *Cancer Biol Ther*. 11: 701-7.

46. Mayes JS, Watson GH. (2004) Direct effects of sex steroid hormones on adipose tissues and obesity. *Obes Rev*. 5: 197-216.

47. Lundin KB, Henningson M, Hietala M, Ingvar C, Rose C, Jernström H. (2011) Androgen receptor genotypes predict response to endocrine treatment in breast cancer patients. *British journal of cancer*. 105: 1676-83.

48. van Anders SM, Hampson E. (2005) Waist-to-hip ratio is positively associated with bioavailable testosterone but negatively associated with sexual desire in healthy premenopausal women. *Psychosom Med*. 67: 246-50.

49. Peiris AN, Struve MF, Kissebah AH. (1987) Relationship of body fat distribution to the metabolic clearance of insulin in premenopausal women. *Int J Obes*. 11: 581-9.

50. Subbaramaiah K, Howe LR, Bhardwaj P, et al. (2011) Obesity is associated with inflammation and elevated aromatase expression in the mouse mammary gland. *Cancer Prevention Research*. 4: 329-46.

51. Goodwin PJ, Stambolic V, Lemieux J, et al. (2011) Evaluation of metformin in early breast cancer: a modification of the traditional paradigm for clinical testing of anti-cancer agents. *Breast Cancer Res Treat*. 126: 215-20.

Given breast cancer, does breast size matter?

Table 1. Patient characteristics.

	All patients, n = 772	Missing	Breast volume <850mL n = 284	Breast volume ≥850mL n = 393
	Median (IQR) or percent		Median (IQR) or percent	Median (IQR) or percent
Age at diagnosis (years)	60.4 (52.3-66.9)	-	57.8 (49.9-64.9)	61.4 (54.2-68.2)
Age at menarche (years)	13.0 (12.0-14.0)	3	13.0 (12.0-14.0)	13.0 (12.0-14.0)
Parous (%)	86.3 %	-	85.9%	87.5%
Parity (no of children)	2 (1-3)	-	2 (1-3)	2 (1-3)
Ever oral contraceptive use (%)	70.9 %	-	78.5%	66.2%
Ever hormone replacement therapy use (%)	45.8 %	2	40.1%	48.1%
Smoking during last week (%)	22.3 %	-	26.1%	18.8%
Height (cm)	165.0 (162.0-170.0)	2	167.0 (162.0-170.0)	165.0 (161.6-169.0)
Weight (kg)	68.6 (61.0-77.0)	3	62.5 (57.0-68.5)	73.5 (66.0-84.0)
BMI (kg/m ²)	24.8 (22.4-28.0)	4	22.5 (20.9-24.3)	26.8 (24.4-30.5)
Total breast volume (mL)*	1000 (650-1500)	95	600 (425-700)	1400 (1000-1825)
Waist-to-hip ratio	0.85 (0.80-0.90)	2	0.81 (0.76-0.86)	0.87 (0.83-0.92)

*Total breast volume was not analyzed for women with previous breast surgeries (n=89). Breast volume was missing for an additional 6 women.

Given breast cancer, does breast size matter?

Given breast cancer, does breast size matter?

Table 2. Tumor characteristics in relation to age, BMI, WHR, and breast size.

	Number of patients (%) Total number of patients n=72	Age<50 n=151 (%)	Age≥50 n=621 (%)		BMI<25 n=397 (%)	BMI≥25 n=371 (%)		WHR<0.85 n=404 (%)	WHR>0.85 n=366 (%)		Waist<80 n=209 (%)	Waist≥80 n=561 (%)		Breast size <50mL n=284 (%)	Breast size ≥50mL n=393 (%)	
PT				p = 0.044			p < 0.001			p=0.013			p = 0.071			p = 0.018
In situ	28 (3.6)	0 (0)	28 (4.5)		17 (4.3)	11 (3.0)		11 (2.7)	17 (4.6)		6 (2.9)	22 (3.9)		10 (3.5)	13 (3.3)	
1	539 (69.8)	102 (67.5)	437 (70.4)		298 (75.1)	238 (64.2)		299 (74.0)	239 (65.3)		166 (79.4)	372 (66.3)		214 (75.4)	258 (65.6)	
2	192 (24.9)	46 (30.5)	146 (23.5)		81 (20.4)	110 (29.6)		88 (21.8)	103 (28.1)		35 (16.7)	156 (27.8)		58 (20.4)	114 (29.0)	
3	12 (1.6)	3 (2.0)	9 (1.4)		1 (0.3)	11 (2.8)		5 (1.2)	7 (1.9)		2 (1.0)	10 (1.8)		1 (0.4)	8 (2.0)	
4	1 (0.1)	0	1 (0.2)		0	1 (0.3)		1 (0.2)	0		0	1 (0.2)		1 (0.4)	0	
Missing	0	0	0		0	0		0	0		0	0		0	0	
Histological grade				p = 0.017			p = 0.23			p=0.016			p = 0.015			p = 0.031
I	191 (25.0)	32 (21.3)	159 (25.9)		108 (27.5)	82 (22.3)		115 (28.7)	75 (20.8)		64 (30.6)	126 (22.7)		79 (28.0)	90 (23.3)	
II	382 (50.0)	67 (44.7)	315 (51.3)		187 (47.6)	193 (52.6)		199 (49.6)	183 (50.7)		105 (50.5)	277 (50.0)		138 (48.9)	194 (50.1)	
III	191 (25.0)	51 (34.0)	140 (22.8)		98 (24.9)	92 (25.1)		87 (21.7)	103 (28.5)		39 (18.8)	151 (27.3)		65 (23.0)	103 (26.6)	
Missing	8	1	7		4	4		3	5		1	7		2	6	
Hormone receptor status																
ER+ (%)	647 (86.8)	122 (81.3)	525 (86.2)	p = 0.025	337 (86.5)	306 (85.0)		349 (88.6)	296 (84.8)	p=0.233	182 (89.2)	463 (85.9)	p = 0.130	244 (86.7)	320 (84.4)	p = 0.13
PR+ (%)	516 (69.3)	105 (70.0)	411 (66.2)	p = 0.83	263 (66.2)	250 (69.4)		275 (69.8)	241 (69.1)	p=0.934	142 (67.9)	374 (66.7)	p = 0.826	198 (72.0)	260 (66.2)	p = 0.35
Missing	27	1	26		16	11		10	17		5	22		9	14	
Nodal involvement				p = 0.28			p = 0.030			p=0.012			p = 0.022			p = 0.025
0 positive nodes	477 (61.8)	85 (56.3)	392 (63.1)		262 (66.0)	213 (57.4)		254 (62.9)	223 (60.9)		147 (70.3)	330 (58.8)		186 (65.5)	236 (60.1)	
1-3 positive nodes	224 (29.0)	49 (32.5)	175 (28.2)		106 (26.7)	116 (31.3)		124 (30.7)	99 (27.0)		49 (23.4)	174 (31.0)		83 (29.2)	113 (28.8)	
≥4 positive nodes	71 (9.3)	17 (11.3)	54 (8.7)		29 (7.3)	42 (11.3)		26 (6.4)	44 (12.0)		13 (6.2)	57 (10.2)		15 (5.3)	44 (11.2)	
Missing	0	0	0		0	0		0	0		0	0		0	0	
Tumor discovery				p = 0.021			p = 0.001			p<0.001			p < 0.001			p < 0.001
Screening detected	429 (61.3)	39 (49.4)	390 (62.8)		196 (55.2)	230 (67.3)		193 (54.2)	235 (68.7)		92 (50.0)	336 (65.4)		126 (50.2)	253 (69.9)	
Not screening detected	271 (38.7)	40 (60.6)	231 (37.2)		159 (44.8)	112 (32.7)		163 (45.8)	107 (31.3)		92 (50.0)	178 (34.6)		127 (49.8)	109 (30.1)	

Missing values: BMI four missing, WHR 2 missing, Waist 2 missing; ER & PR 27 missing; Breast size 6 missing and 89 excluded due to previous breast surgeries.

Given breast cancer, does breast size matter?

Table 3. Multivariate models of disease-free and distant metastasis-free survival in relation to breast size, adjusted for BMI, WHR, and waist circumference, respectively, in patients with ER-positive tumors.

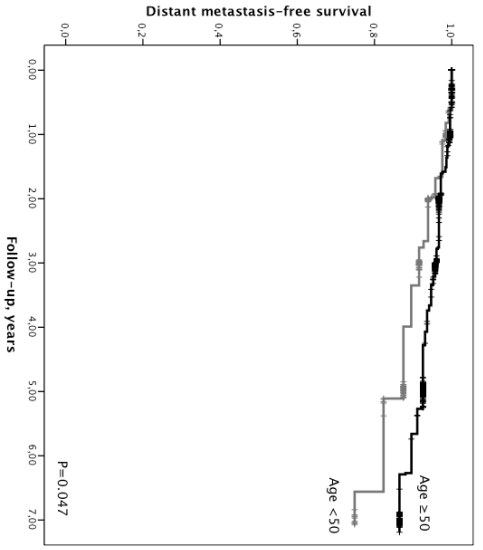
Disease-free survival adjusted for BMI					Distant metastasis-free survival			
	HR	95.0% CI for HR		Sig.	HR	95.0% CI for HR		Sig.
		Lower	Upper			Lower	Upper	
Breast size ≥850mL	3.64	1.42	9.35	0.007	6.33	1.36	29.43	0.019
Age, years	0.97	0.95	1.00	0.053	0.99	0.96	1.02	0.55
pT 2 or larger	1.72	0.81	3.68	0.16	3.13	1.26	7.74	0.014
pN positive	2.03	0.90	4.57	0.086	2.46	0.88	6.87	0.086
Histological grade III	2.84	1.23	6.53	0.014	3.24	1.25	8.41	0.016
Ln transformed BMI	1.36	0.15	12.00	0.78	2.99	0.23	39.48	0.41
Ever tamoxifen, yes	0.35	0.17	0.72	0.004	0.38	0.16	0.92	0.033
Ever AI* use, yes	0.44	0.20	0.99	0.046	0.53	0.20	1.39	0.20
Disease-free survival adjusted for WHR					Distant metastasis-free survival			
	HR	95.0% CI for HR		Sig.	HR	95.0% CI for HR		Sig.
		Lower	Upper			Lower	Upper	
Breast size ≥850mL	3.81	1.50	9.68	0.005	6.96	1.47	32.95	0.014
Age, years	0.97	0.94	1.00	0.046	0.99	0.96	1.02	0.45
pT 2 or larger	1.73	0.81	3.69	0.16	3.15	1.28	7.77	0.013
pN positive	2.03	0.90	4.57	0.086	2.49	0.89	6.97	0.082
Histological grade III	2.75	1.19	6.39	0.018	2.85	1.07	7.56	0.036
Ln transformed WHR	1.10	0.02	61.41	0.96	2.42	0.012	488.32	0.74
Ever tamoxifen, yes	0.35	0.17	0.72	0.004	0.38	0.16	0.94	0.037
Ever AI* use, yes	0.44	0.20	0.99	0.046	0.53	0.20	1.42	0.21
Disease-free survival adjusted for waist circumference					Distant metastasis-free survival			
	HR	95.0% CI for HR		Sig.	HR	95.0% CI for HR		Sig.
		Lower	Upper			Lower	Upper	
Breast size ≥850mL	3.92	1.50	10.27	0.005	6.87	1.44	32.83	0.016
Age, years	0.97	0.95	1.00	0.045	0.99	0.96	1.02	0.46
pT 2 or larger	1.73	0.81	3.69	0.15	3.16	1.28	7.85	0.013
pN positive	2.08	0.91	4.58	0.085	2.47	0.88	6.95	0.086
Histological grade III	2.77	1.20	6.40	0.017	2.93	1.13	7.60	0.027
Ln transformed waist circumference	0.88	0.06	13.37	0.93	1.88	0.06	56.74	0.72
Ever tamoxifen, yes	0.35	0.17	0.71	0.004	0.37	0.15	0.91	0.030
Ever AI* use, yes	0.44	0.20	0.98	0.045	0.52	0.20	1.38	0.19

AI Aromatase inhibitor

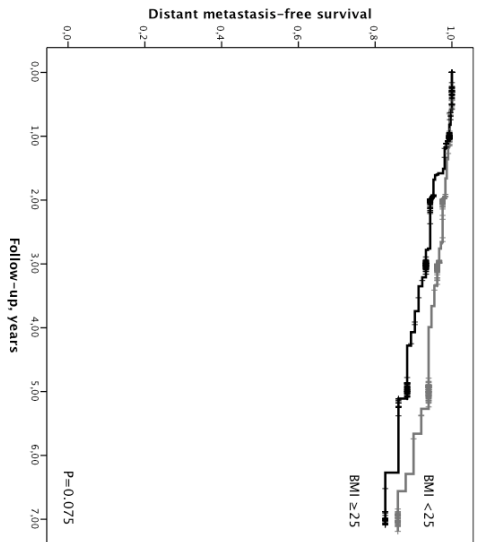
Given breast cancer, does breast size matter?

Given breast cancer, does breast size matter?

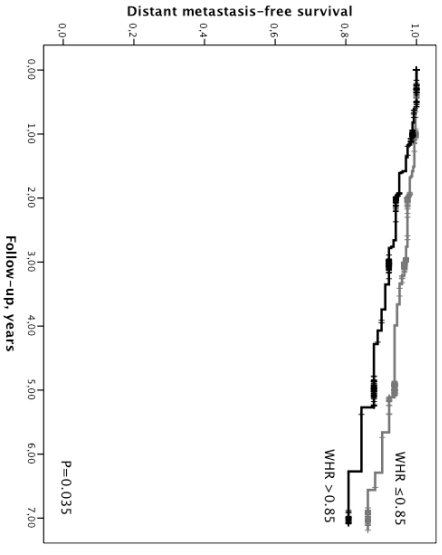
1a



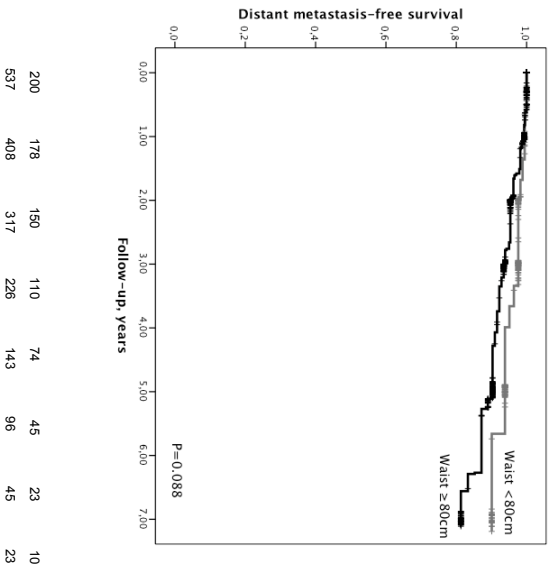
1b



1c

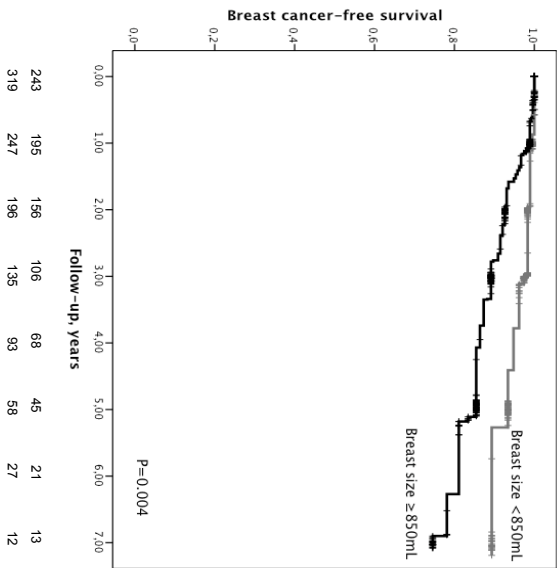


1d



Given breast cancer, does breast size matter?

2b



2b

