



# LUND UNIVERSITY

## Health economic evaluation of the Lund Integrated Medicines Management Model (LIMM) in elderly patients admitted to hospital.

Ghatnekar, Ola; Bondesson, Åsa ÅB; Persson, Ulf; Eriksson, Tommy

*Published in:*  
BMJ Open

*DOI:*  
[10.1136/bmjopen-2012-001563](https://doi.org/10.1136/bmjopen-2012-001563)

2013

[Link to publication](#)

*Citation for published version (APA):*

Ghatnekar, O., Bondesson, Å. ÅB., Persson, U., & Eriksson, T. (2013). Health economic evaluation of the Lund Integrated Medicines Management Model (LIMM) in elderly patients admitted to hospital. *BMJ Open*, 3(1), e001563. <https://doi.org/10.1136/bmjopen-2012-001563>

*Total number of authors:*  
4

### General rights

Unless other specific re-use rights are stated the following general rights apply:  
Copyright and moral rights for the publications made accessible in the public portal are retained by the authors and/or other copyright owners and it is a condition of accessing publications that users recognise and abide by the legal requirements associated with these rights.

- Users may download and print one copy of any publication from the public portal for the purpose of private study or research.
- You may not further distribute the material or use it for any profit-making activity or commercial gain
- You may freely distribute the URL identifying the publication in the public portal

Read more about Creative commons licenses: <https://creativecommons.org/licenses/>

### Take down policy

If you believe that this document breaches copyright please contact us providing details, and we will remove access to the work immediately and investigate your claim.

LUND UNIVERSITY

PO Box 117  
221 00 Lund  
+46 46-222 00 00

# Health economic evaluation of the Lund Integrated Medicines Management Model (LIMM) in elderly patients admitted to hospital

Ola Ghatnekar,<sup>1</sup> Åsa Bondesson,<sup>2</sup> Ulf Persson,<sup>1</sup> Tommy Eriksson<sup>3</sup>

**To cite:** Ghatnekar O, Bondesson Å, Persson U, *et al.* Health economic evaluation of the Lund Integrated Medicines Management Model (LIMM) in elderly patients admitted to hospital. *BMJ Open* 2013;**3**:e001563. doi:10.1136/bmjopen-2012-001563

► Prepublication history for this paper are available online. To view these files please visit the journal online (<http://dx.doi.org/10.1136/bmjopen-2012-001563>).

Received 29 May 2012  
Revised 28 November 2012  
Accepted 29 November 2012

This final article is available for use under the terms of the Creative Commons Attribution Non-Commercial 2.0 Licence; see <http://bmjopen.bmj.com>

<sup>1</sup>Swedish Institute for Health Economics, Lund, Sweden  
<sup>2</sup>Department of Medicines Management and Informatics, County of Skåne, Malmö, Sweden  
<sup>3</sup>Department for Laboratory Medicine, Institution for Laboratory Medicine, Lund University, Lund, Sweden

**Correspondence to:**  
Dr Ola Ghatnekar;  
[og@ihe.se](mailto:og@ihe.se)

## ABSTRACT

**Objective:** To evaluate the cost effectiveness of a multidisciplinary team including a pharmacist for systematic medication review and reconciliation from admission to discharge at hospital among elderly patients (the Lund Integrated Medicines Management (LIMM)) in order to reduce drug-related readmissions and outpatient visits.

**Method:** Published data from the LIMM project group were used to design a probabilistic decision tree model for evaluating tools for (1) a systematic medication reconciliation and review process at initial hospital admission and during stay (admission part) and (2) a medication report for patients discharged from hospital to primary care (discharge part). The comparator was standard care. Inpatient, outpatient and staff time costs (Euros, 2009) were calculated during a 3-month period. Disutilities for hospital readmissions and outpatient visits due to medication errors were taken from the literature.

**Results:** The total cost for the LIMM model was €290 compared to €630 for standard care, in spite of a €39 intervention cost. The main cost offset arose from avoided drug-related readmissions in the Admission part (€262) whereas only €66 was offset in the Discharge part as a result of fewer outpatient visits and correction time. The reduced disutility was estimated to 0.005 quality-adjusted life-years (QALY), indicating that LIMM was a dominant alternative. The probability that the intervention would be cost-effective at a zero willingness to pay for a gained QALY compared to standard care was estimated to 98%.

**Conclusions:** The LIMM medication reconciliation (at admission and discharge) and medication review was both cost-saving and generated greater utility compared to standard care, foremost owing to avoided drug-related hospital readmissions. When implementing such a review process with a multidisciplinary team, it may be important to consider a learning curve in order to capture the full advantage.

## INTRODUCTION

The full value of medications as shown in studies with single drugs is difficult to

## ARTICLE SUMMARY

### Article focus

- The LIMM model involves systematic patient centred and team-based activities and structured tools for medication review, including medication reconciliation.
- The model has been extensively investigated and shown important improvements in the care process and on some patient outcomes.
- This study investigated the cost utility of the model based on data from three LIMM studies.

### Key messages

- The study was shown to generate both cost savings and higher utility to the patients.
- Investing €39 in clinical pharmacist time could save €340 in medical care at hospital and in primary care, as well as in administrative costs for correcting errors in medication lists in primary and municipality care after discharge.

### Strengths and limitations of this study

- All bias and confounders could not be ruled out since not all included studies were not randomised and controlled.
- Utilities were taken from the literature and may not entirely reflect the analysed patient population.
- Cost savings were shown to be stable also in several sensitivity analyses which indicated that these shortcomings may be of less importance.

achieve in clinical practice. Poor communication of medical information at transition points between care givers has been shown responsible for as many as 50% of all medication errors in the hospital and up to 20% of adverse drug events.<sup>1</sup> Adverse drug effects are between the fourth and sixth leading causes of death in the USA<sup>2</sup> and for every dollar spent on drugs in US nursing home facilities; \$1.33 in healthcare resources are consumed in the treatment of drug-related problems.<sup>3</sup> In systematic reviews, it is reported that up to 41% of the hospital admissions are caused by adverse drug

reactions and that the majority of these can be prevented, among the elderly up to 90%.<sup>2–4</sup> In addition, Hohl *et al*<sup>5</sup> report that index hospitalisations due to adverse drug events are 0.5–4 times longer. Their estimates of cost differences were US\$233 (=171€) between patients presenting with and without adverse drug events. In Sweden, 6–16% of hospital admissions are reported to be medication related and the costs for avoidable drug-related harms have been calculated at SEK5.6–24.6 billion (€0.6–2.5 billion) annually.<sup>6</sup>

Recently randomised controlled studies showed reductions in drug-related inpatient and outpatient readmissions, reduced hospital stay and improved health-related quality of life.<sup>7–9</sup> The economic effects of these outcomes have been studied, and in two review studies, it was concluded that clinical pharmacist interventions are associated with cost savings, although the mixed methodological quality limited the overall conclusions.<sup>10–11</sup>

However, the cost for pharmacy services for avoiding one death in hospitals was calculated at \$320 and each dollar spent on clinical pharmacy services gave \$4.8 in return.<sup>12–13</sup> A UK-based study concluded that pharmacist-led medication reconciliation intervention had the highest expected net benefit compared to nurse-led and physician-led interventions. The probability of being cost-effective at a societal willingness to pay for a quality-adjusted life-year (QALY) of £10 000 was estimated to be over 60%.<sup>14</sup> Another UK pharmaceutical care study estimated the incremental cost to £10 000 per QALY gained.<sup>15</sup> In contrast, an economic evaluation performed alongside a randomised controlled study showed that in-hospital clinical pharmacist service was not cost-effective in a Swedish healthcare setting.<sup>16</sup>

We have developed the L IMM (Lund Integrated Medicines Management) model, a systematic approach to individualise and optimise drug treatment in elderly patients admitted to hospital. It starts at admission, continues during hospital stay and ends with a summary written for the patient and communicated with the patient, the primary and/or community care at discharge. The L IMM model involves systematic activities based on structured and evidence-based tools for Medication Review, including Medication Reconciliation. Clinical pharmacists work in a multiprofessional team, in close collaboration with ward physicians, nurses, carers and paramedics. This model is the base for three PhD dissertations and has been shown to improve process and patient outcomes such as improving the appropriateness in the patient's drug treatment,<sup>6–17</sup> identify and reduce drug-related problems<sup>18–20</sup> and medication errors,<sup>21–24</sup> and reduce the need for healthcare contacts caused by medication errors.<sup>6–25</sup>

The aim of this study was to develop a health economic model to study the cost-utility of the L IMM model, that is, taking into account the health-related quality of life aspects. With such an analytical tool, it would be possible to determine how much the different activities contribute to costs and effects.

## METHODS

We designed a probabilistic decision tree model in MS Excel 2010 for evaluating tools for (1) a systematic medication reconciliation and review process at initial hospital admission in order to avoid drug-related hospital readmission due to medication errors (Admission part) and (2) a medication report for patients discharged from hospital to primary care in order to reduce the medication errors with subsequent outpatient contacts and hospitalisations as a consequence (Discharge part) (figure 1). The model estimated costs and utility loss from medication errors needing medical attention within a 3-month time period, in line with the follow-up in the underlying data. No discounting was therefore performed. All clinical data were based on studies performed by the L IMM-research group at Skåne University Hospital in Lund and at Landskrona Hospital with a total catchment area of more than 300 000 inhabitants. Costs were based on actual resource use (patient charts) and time analysis studies for medical report reviews and expressed in Euros, 2009 prices. Utility loss in terms of QALY for the conditions that needed medical attention were taken from the literature. Probabilities, unit costs, disutility weights and distributions are presented in table 1. Costs relevant for the county council and municipality care were used. Indirect costs for production losses were not considered as the analysed cohort was assumed to be retired. A probabilistic sensitivity analysis (PSA) was performed with 10 000 iterations. Admission part: medication reconciliation and review process at initial hospital admission

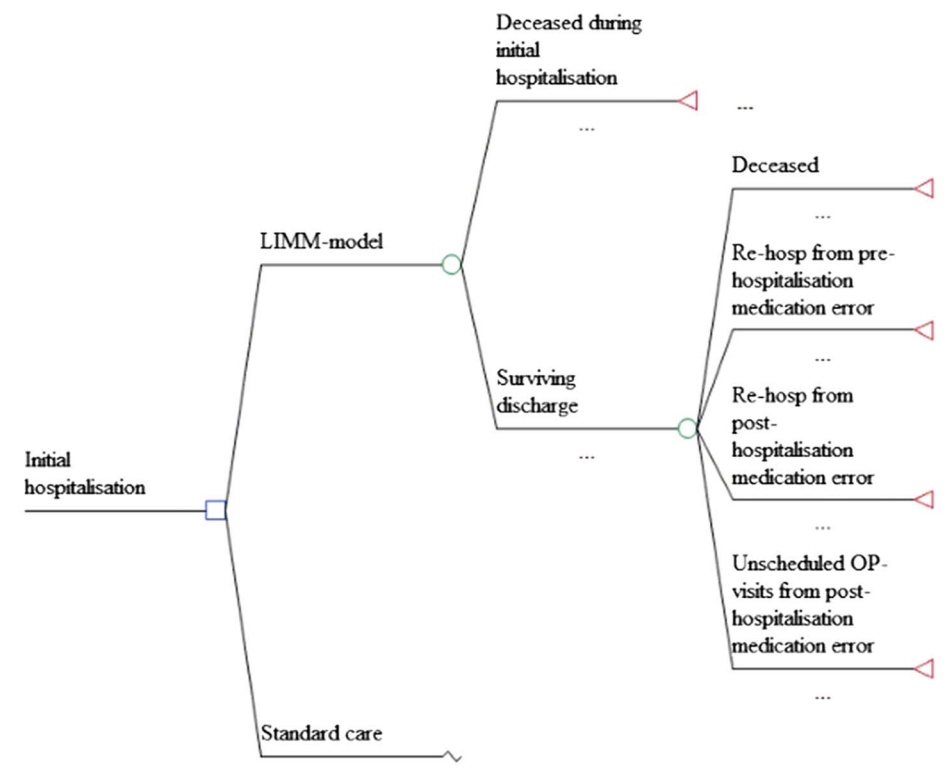
In a study by Hellström *et al*,<sup>6</sup> a systematic medication reconciliation and review process at initial hospital admission and discharge was evaluated (among 109 patients) compared with standard care with medication reconciliation upon discharge (101 patients). Nine and 12 patients, respectively, deceased before hospital discharge. Of those surviving discharge, hospital re-admissions with a 'certain', 'probable' or 'possible' causality assessment, occurred in 12 and 6 patients, respectively (absolute risk reduction=6.9%) during the 3-month follow-up.

Based on a time study and schedule calculation study, the pharmacist spent on average 65 min/patient (assumption; SD=20% of mean) for the medication review process in the intervention arm.<sup>26</sup> Time spent by physicians and nurses in the control arm was estimated to 44 min and 17 min, respectively, based on time studies at the neighbouring Malmö Hospital where the L IMM model was not practiced.<sup>26</sup>

### Discharge part: medication report at discharge from hospital

Midlöv *et al*<sup>25</sup> studied the difference in need for medical care due to medication error among patients with and without a medication report at discharge from hospital to a nursing home or their own home with nurse assistance for drug dispensing. Using the same WHO criteria as

**Figure 1** Schematic description of the decision tree evaluating the cost effectiveness of the Lund Integrated Medicines Management model versus standard care.



described above, they found that 11 of 248 prospective patients (4.4%) in the intervention arm (I) experienced a medical care event due to medication error with certain, probable or possible causality. This was compared to 16 out of 179 patients (8.9%) in the control arm (C) recruited retrospectively from the same departments, an absolute risk reduction of 4.5% ( $p=0.049$ ). A further analysis of the data revealed that these medical care events were either outpatient contacts (I:10; C:13) or hospitalisations (I:1; C:3), none of them statistically significant (table 1). The split between unscheduled outpatient visits (42%) and telephone contacts (58%) due to medication errors were taken from observational data among 100 random patients aged 54 and above from March 2006 to November 2006 (Lina Hellström; data on file). In addition, we assumed that a telephone contact and a visit would consume 15 and 30 min, respectively, in physician time including medical chart updating (Patrik Midlöv, personal communication).

The probability of a medication error with and without the intervention has been estimated to 32% and 66%, respectively.<sup>21</sup> However, in order not to double count the cases which had to seek medical care due to medication error, we subtracted these events resulting in 31.5% and 62% ( $p<0.001$ ) patients with at least one medication error in the intervention arm and the control arm, respectively. With the introduction of quality-controlled (QC) discharge information, the number of patients with at least one medication error was reduced from 36.5% to 26.9% ( $p=0.278$ ;  $RR=0.737$ ) in a study performed at Landskrona Hospital with 115

patients (I:52; C:63).<sup>25</sup> We used this reduction in relative risk to adjust the probability of at least one prescription error with QC discharge information.

In a second study, primary care physicians and municipality care nurses were asked how much time they spend checking correctness of a patient's medication list when they were discharged from hospital to municipality care.<sup>27</sup> The survey was based on two scenarios with and without an L IMM-discharge information. The average time allocated by a municipality care nurse was estimated to 59 min for patients discharged without a medication report.<sup>27</sup> For those patients discharged with a medication report, the average time for a nurse was 26 min when inconsistencies between previous medication and the medication report was found (89%) and 3 min when no inconsistencies were found (11%) (table 1).

In the event the primary care physician had to be contacted to correct inconsistencies, (s)he would have to devote a certain time to review the medication list and perhaps contact the discharging physician at the hospital clinic. It was estimated that primary physicians spent on average 14.8 min for reviewing the medication list and 4.9 min if the discharging physician at the hospital clinic had to be contacted.<sup>27</sup> The corresponding time in the intervention group was estimated to be 4.7 and 2.3 min, respectively.

### Unit costs and dis-utilities

Costs for hospital re-admissions in Part I were collected from the hospital accounting database, but revealed no statistically significant difference in means between the study arms (table 1). The same hospitalisation cost was

## Health economic evaluation of the LImm model

**Table 1** Model inputs: probabilities, costs (Euro 2009), utility and distributions

	Distribution	Mean	SD
Admission part: medication reconciliation and review process at initial hospital admission			
Probability of death before discharge			
Control	$\beta$	0.089	0.029
Intervention	$\beta$	0.110	0.031
Probability of death during 3 month after discharge			
Control	$\beta$	0.098	0.030
Intervention	$\beta$	0.093	0.029
Probability of hospital readmissions			
Control	$\beta$	0.130	0.034
Intervention	$\beta$	0.062	0.024
Mean hospital cost per hospitalised patient			
Control (sensitivity)	$\gamma$	3620	2843
Intervention (sensitivity)	$\gamma$	4925	3352
All 18 hospitalisations	$\gamma$	4055	2989
Drug review cost per patient			
Control	$\gamma$	45.57	23.36
Intervention	$\gamma$	33.92	14.24
Discharge part: medication report at discharge from hospital			
Probability of hospital readmissions			
Control	$\beta$	0.017	0.013
Intervention	$\beta$	0.004	0.006
Probability of unscheduled outpatient contact			
Control	$\beta$	0.073	0.026
Intervention	$\beta$	0.040	0.020
Probability of prescription error			
Control	$\beta$	0.620	0.487
Intervention	$\beta$	0.315	0.465
Relative risk reduction for prescription error probability w QC			0.737
Outpatient nursing time cost for review of medication list			
Control	$\gamma$	25.65	10.77
Intervention	$\gamma$	10.21	4.29
Primary physician-patient contact cost			
Both arms	$\gamma$	18.58	9.19
Primary physician-nurse/discharging clinic contact cost			
Control: physician-nurse	$\gamma$	12.86	5.53
Control: physician-clinic	$\gamma$	4.29	0.62
Intervention: physician-nurse	$\gamma$	4.05	3.15
Intervention: physician-clinic	$\gamma$	1.99	0.51
Intervention cost			
Training in medication report cost	$\gamma$	0.35	0.07
QC of discharge information	$\gamma$	8.70	3.65
Utility decrement (assumption)			
For hospitalisations	$\beta$	0.060	0.085
For outpatient contact	$\beta$	0.002	0.001

QC, quality check.

applied in both the Admission and Discharge parts. The physician's, pharmacist's and nurse's time were costed at €0.87, €0.52 and €0.43/min, respectively, including payroll-taxes (42%) and overhead costs (25%). Intervention costs include both pharmacist's and physician's time for review, communication, prescription, training and quality checks. As we did not have information on the variability in nurse costs, we assumed the SD to be 42% of the mean, which was the average coefficient of variation for the other cost items in Part 2.

Utility decrements, in terms of QALY due to rehospitalisations in parts 1 and 2, were taken from the literature and a weighted mean was calculated for the main rehospitalisation diagnoses from Part 1 (atrial fibrillation, hypoglycaemia, chronic obstructive pulmonary disease, hip fracture, heart failure).<sup>28-32</sup> For patients experiencing a medication-related healthcare contact, we assumed a disutility decrement of 0.0014 QALY for a telephone contact, corresponding to approximately 2.5 days with moderate pain or discomfort according to

the UK EQ-5D tariff.<sup>33</sup> For a primary care visit, we assumed a decrement of 0.0028.

### Sensitivity analysis

In the base case scenario, all variables are set according to [table 1](#) with a probabilistic sensitivity analysis following the specified distributions and parameter values. In order to test the sensitivity of the results to some of the variables, we performed the following analyses:

- ▶ No quality control of the medication report at discharge from hospital;
- ▶ Hospitalisation cost reduced to 50%;
- ▶ Hospitalisation cost 36% higher in intervention arm;
- ▶ Admission part probability for hospitalisation in intervention arm +100%;
- ▶ Intervention cost (time) 50% higher;
- ▶ Cost (time) for physicians and nurses administration reduced to 50% and
- ▶ Every analysis was performed with 10 000 iterations.

### Presentation

Costs (Euro) and effects (QALY) are presented as means and SEs for both the standard procedure and the intervention arms. We also present scatterplots with all 10 000 iterations in the cost-effectiveness plane from the PSA, that is, the incremental cost (y-axis) is paired with the incremental effect (x-axis) from each iteration. In addition, cost-effectiveness acceptability curves were calculated for different willingness to pay thresholds.<sup>34</sup> These present the probability that the additional cost of the intervention per QALY gained, compared with routine procedure, is less than the chosen willingness to

pay. However, owing to space restrictions, they were not presented graphically.

### RESULTS

The first part of the model, that is, the systematic medication reconciliation and review process at initial hospital admission (Admission part), estimated the total cost for the intervention arm to €260 including the cost for pharmacist time of €34 ([table 2](#)). This was €273 lower than in the non-intervention group, which, together with 0.004 QALYs gained, indicated that the medication reconciliation and review process was a dominant alternative, that is, both cost saving and producing more health. As this intervention mainly affected the probability of unplanned rehospitalisations and outpatient visits, almost all cost savings arose in this cost item (€262). The drug review cost in the Standard Care arm (€46) was mainly a result of more costly physician time devoted to medication reconciliation upon discharge.

The second part analysed the quality-controlled medication report at discharge from hospital (Discharge part). Also this intervention was dominant as it generated cost savings of €66 and improving health, although only marginally (0.001 QALYs gained). The intervention cost was lower as the time allocated for training in medication reporting and quality control was much shorter than in the Admission part. The savings in terms of avoided rehospitalisations and outpatient visits (€48) was lower than in the Admission part as a result of the lower probabilities for these events to occur. The cost savings for 'Primary care nurse/physician administration cost'

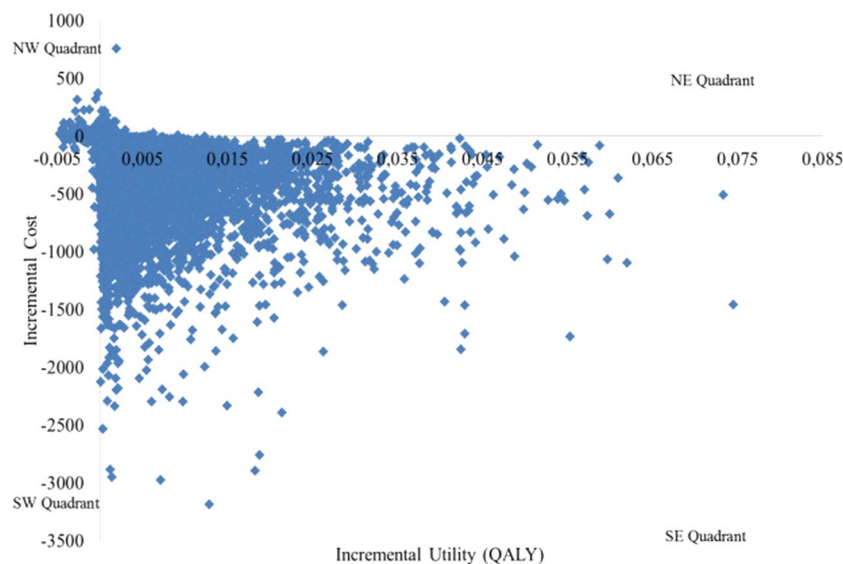
**Table 2** Base case results of the LIMM process versus standard care (costs in Euro)

		LIMM		Standard care		Difference	
		Mean	SE	Mean	SE	Mean	SE
Drug review cost	Admission	34	14	46	24	-12	28
	Discharge	5	2	0	0	5	2
	Subtotal	39	14	46	24	-7	28
Primary care nurse/physician administration cost	Admission	0	0	0	0	0	0
	Discharge	10	4	33	10	-23	11
	Subtotal	10	4	33	10	-23	11
OP visit and hospital stay cost	Admission	226	200	488	396	-262	278
	Discharge	15	21	63	63	-48	58
	Subtotal	241	209	551	440	-310	308
Grand total cost	Admission	260	200	534	397	-273	280
	Discharge	30	21	96	64	-66	59
	Total	290	210	630	441	-340	310
QALY loss	Admission	0.003	0.005	0.007	0.011	-0.004	0.007
	Discharge	0.000	0.000	0.002	0.002	-0.001	0.001
	Total	0.004	0.005	0.009	0.011	-0.005	0.007
Incremental cost-utility ratio	Admission	Dominant					
	Discharge	Dominant					
	Total	Dominant					

LIMM, Lund Integrated Medicines Management; OP, outpatient; QALY, quality-adjusted life-year. Dominant, cost saving and greater utility with the LIMM model.

## Health economic evaluation of the LMM model

**Figure 2** Scatterplot in the cost effectiveness plane for the Lund Integrated Medicines Management process.



(€23) was mainly driven by the time the outpatient nurse had to devote to review and update the medical list for the patient at the community level.

In total, the integrated process could be expected to generate savings of €340, in spite of an intervention cost of €39, and gained utility of 0.005. The main savings accrued from the systematic medication reconciliation and review process at initial hospital admission (Admission part) owing to the reduced probability of unplanned rehospitalisations.

Hence, because of the cost saving and the increased utility, the probability that the intervention would be cost-effective at a zero willingness to pay for a QALY gain would be 98%. This means that the intervention is expected to be cost-saving at a 98% chance in spite of the underlying uncertainty in the parameter values. However, as some observations from the PSA were found in the north-west quadrant (figure 2), where the intervention was more costly and resulted in a worse outcome, the probability that the intervention would be 100% cost effective was not possible.

### Sensitivity analyses

The sensitivity analysis indicated that the results were robust to several changes (table 3). As we ran probabilistic sensitivity analysis costs and effects in both the intervention and the control, arms can change relative to the base case scenario. These differences from the base case were therefore due to probabilistic differences.

If no quality control of the medication list at discharge was performed, the potential cost savings increased marginally. As these medication errors did not result in any substantial medical care contacts, the reduced intervention cost for quality control (€4.9) was greater than the expected increase in medical list review cost for nurse and/or physician due to medication errors (€0.56). As we only accounted for any disutility in connection to medical care, the quality control did not affect the resulting utilities.

As the main cost off-set was seen in avoided hospitalisation, we would expect the results to be sensitive to changes in this cost. When this cost was reduced to 50% for both treatment alternatives, the net cost savings

**Table 3** Sensitivity analysis (Euro)

Analysis	Costs		QALY gain		Cost-effectiveness at €0 WTP (%)
	Intervention	Control	Difference		
Base case	290	630	-340	0.005	98
No quality control of medication list at discharge	284	626	-342	0.005	98
Hospitalisation cost 50%	170	356	-185	0.005	98
Hospitalisation cost 36% higher in intervention arm	339	567	-228	0.005	69
Admission part probability for hospitalisation in intervention arm +100%	484	619	-135	0.002	80
Intervention time +50%	309	629	-320	0.005	97
Review time for physician and nurse -50%	377	578	-301	0.005	96

QALY, QALY, quality-adjusted life-year; WTP, willingness to pay for a gained QALY.

almost halved (€185). In the base case, we used a cost per hospitalisation that was equal in both arms due to small number of observations. When costs were split in separate costs for patients in the control arm (€3620) and the intervention arm (€4925), or 36% higher, the scope for cost savings fell to €228. Likewise, when the probability of hospitalisation in the Admission part was doubled, the potential savings fell to €135, or by 60%. In addition, as a consequence of the increased probability in hospitalisation, the resulting utility gain was reduced.

Increasing the intervention time by 50%, that is, the time for pharmacists in the reconciliation at hospital admission and quality control of medication lists at discharge, reduced the potential savings marginally to €320. Reducing the labour cost, that is, the time physicians and nurses spent on reviewing medication lists by 50%, had of course a greater consequence in the control arm as the time they devoted for this task was greater than in the intervention arm. Still, the results had only a very small impact on the cost savings compared to the base case (−11%).

## DISCUSSION

Combining the medication reconciliation and review process at initial hospital admission (Admission part) with a quality-controlled medication report at discharge from hospital (Discharge part) was shown to generate both cost savings and higher utility to the patients. In fact, investing €39 in clinical pharmacist time could save €340 in medical care at hospital and in primary care, as well as in administrative costs for correcting errors in medication lists in primary and municipality care after discharge. Furthermore, the analysis showed that the potential for cost off-set was greatest for systematic medication reconciliation and review process at initial hospital admission due to avoided costly hospitalisations.

The main data sources supporting the probabilities for unplanned rehospitalisations, outpatient visits and prescription errors were based on two studies.<sup>6 21</sup> One of the studies was a controlled pre–post study and the outcome was assessed blind.<sup>6</sup> In a recent systematic review of hospital-based medication reconciliation practice, this study was evaluated as a non-controlled pre–post study and was consequently erroneously evaluated as being of poor quality.<sup>35</sup> However, it must be stated that some of the reported resource utilisation (costs) did not show statistically significant differences between the treatment arms for example, the hospitalisation cost. Small patient samples and great variability in the studied variable is often the reason for this. All bias and confounders could not be ruled out since the studies were not randomised and controlled for. However, in our opinion patient-based randomisation could be problematic in team-based interventions. There is of course a risk of bias due to carry over effects decreasing the difference between groups. But there is also a risk of bias increasing the difference between groups owing to a

decreased level of care in the control group than before introducing the intervention. There is a need for higher attention and further studies in this field.

The time utilisation in primary and municipality care for calculating administrative costs for error corrections was also based on surveys.<sup>27</sup> In addition, utilities were taken from the literature and may not entirely reflect the analysed patient population. This are, of course, weaknesses in this study, but nevertheless, the resulting cost savings were shown to be stable in spite of several sensitivity analyses which indicated that these shortcomings may be of less importance. Hence, discarding the assumed utilities, the model would still be valid for a cost-minimisation analysis.

Apart from just estimating the costs and effects from the two main studies, we also modelled the consequences of quality-controlled medication lists. The effects from this control may have been conservatively estimated as the reduction in errors was assumed to only reduce the time devoted to correct these errors. One could argue that some of these avoided errors could have had an impact also on the probabilities of unplanned rehospitalisations and outpatient visits. However, the potential gain from these unplanned healthcare contacts in the Discharge part would be limited to less than €17 in the intervention arm. However, the benefit from the L IMM-discharge part has probably been improved since the initial study performed in 2005.<sup>21</sup> The medication report is now part of the L IMM-discharge information and this have been shown to improve time-utilisation for general practitioners and community care nurses.<sup>26 27</sup>

As previously described, several studies present positive economic benefits from clinical pharmacy services study.<sup>15</sup> Bojke *et al* performed a health economic analysis on the RESPECT trial (Randomised Evaluation of Shared Prescribing for Elderly people in the Community over Time) which included services similar to our study.<sup>15</sup> The RESPECT trial measured both resource use and utility of the patients but did not attain statistically significant differences in outcomes. Their intervention was expected to cost an extra £192 per patient and year with a gain of 0.019 QALY, resulting in an incremental cost-utility ratio of approximately £10 000 (2004–2005 prices). Apart from differences in healthcare structures between the UK and Sweden, the discrepancy in results may be attributable to the fact that the RESPECT trial was a primary care-based pharmaceutical care intervention whereas the L IMM process was hospital based.

A recent Swedish study providing similar services as in L IMM concluded that a hospital-based clinical pharmacist was not cost effective according to the Swedish willingness to pay for a gained QALY.<sup>16</sup> In fact, the cost in the intervention arm tended to be higher than in the control arm, and with only marginal QALY-gains. The authors discuss some potential reasons for this outcome, eg, the use of inexperienced pharmacists. In the L IMM model, the pharmacists were fully integrated in the care team and worked



## Health economic evaluation of the L IMM model

very structured and systematic. The difference between the studies' results could therefore describe a learning curve and or the benefit of a trustful care team supporting the patient. Furthermore, our cost analysis included only hospitalisations that were considered drug-related during a 3-month period after discharge whereas Wallerstedt *et al* included all hospitalisations during 6 months. When including probabilities only for drug-related hospitalisations, we avoided hospitalisations due to differences in patient characteristics and comorbidities between the study arms. Still, historical controls' medical records were scrutinised to identify 'certain', 'probable' or 'possible' hospital readmissions, which may introduce bias from either too strict or too loose rules for causality.

Hence, the size of the gains may not be permanent. In addition, one could argue that the cost effectiveness may be reduced as more and more medication lists will eventually have been reviewed. However, the errors analysed in the L IMM model are often generated during the hospital stay why we believe this process is important to improve the care given and to save resources even in the future. Furthermore, the elderly part of the Swedish population will increase and, hence, the disease burden. Thus, the scope for cost-savings may change with the development of the healthcare structure and internal organisations, why further research is warranted.

The results from this study can be used for allocating resources where the expected outcome is the most favourable. However, it is important that the gains may not be limited to financial resources and utility for the patients. Some physical resources may be in scarcity, such as physicians or nurses, why it may be important to also consider potential bottlenecks in the healthcare process. If, for example, there are a limited number of hospital beds at a ward, it may be recommended to invest in a process reducing the hospitalisations due to medication errors. This could free resources to other patients and probably reduce the distress of the personnel at the ward. In the same way, the time devoted by nurses at nursing homes and physicians reviewing medication lists after hospital discharge can be spent on other tasks.

Rescaling our results to a situation where we have approximately 150 000 hospital admissions in the Southern healthcare region with similar patient characteristics as modelled here, this would mean that some €51 million could be saved per year if the L IMM process was rolled out in the entire region. As it is today, the physician is already, by law, supposed to provide medication discharge information, but this is poorly complied with.<sup>15</sup> Maybe a pay-for-performance could provide a good incentive to get the physicians to provide a quality-controlled medication report at discharge.

### CONCLUSION

The L IMM medication reconciliation (at admission and discharge) and medication review was both cost saving and generated greater utility compared to standard care

among elderly patients, foremost due to avoided drug-related hospital readmissions. As the number of elderly increase in most western countries, the scope for saving resources within the healthcare sector can therefore be rather substantial. However, when implementing such a review process with a multidisciplinary team, it may be important to consider a structured use of checklists, as well as a learning curve, in order to capture the full advantage.

**Contributors** TE and ÅB are the lead investigators for the L IMM model, have full access to data from the studies included in the analyses and conceived the idea of the study. OG and UP were responsible for the design of the cost-utility model and OG was responsible for the data analysis and produced the tables and graphs. The initial draft of the manuscript was prepared by OG and TE. All authors assisted in planning the study, developing an analysis plans, interpreting data and critically revise drafts of the manuscript.

**Funding** This study was funded by Apoteket Farmaci AB.

**Competing interests** TE was previously head of research and development at Apoteket Farmaci AB. This company is a state-owned pharmacy company which had commercial interest in disseminating the L IMM-model.

**Provenance and peer review** Not commissioned; externally peer reviewed.

**Data sharing statement** No additional data are available.

### REFERENCES

1. Institute for Healthcare Improvement. Prevent adverse drug event with medication reconciliation. In: <http://www.ihl.org/explore/ADEsMedicationReconciliation/Pages/default.aspx> (accessed 6 Jan 2013).
2. Lazarou J, Pomeranz BH, Corey PN. Incidence of adverse drug reactions in hospitalized patients: a meta-analysis of prospective studies (see comments). *JAMA* 1998;279:1200–5.
3. Bootman JL, Harrison DL, Cox E. The health care cost of drug-related morbidity and mortality in nursing facilities. *Arch Intern Med* 1997;157:2089–96.
4. Beijer HJ, de Blaey CJ. Hospitalisations caused by adverse drug reactions (ADR): a meta-analysis of observational studies. *Pharm World Sci* 2002;24:46–54.
5. Hohl CM, Nosyk B, Kuramoto L, *et al*. Outcomes of emergency department patients presenting with adverse drug events. *Ann Emerg Med* 2011;58:270–9.
6. Hellstrom LM, Bondesson A, Hoglund P, *et al*. Impact of the Lund Integrated Medicines Management (L IMM) model on medication appropriateness and drug-related hospital revisits. *Eur J Clin Pharmacol* 2011;67:741–52.
7. Gillespie U, Alassaad A, Henrohn D, *et al*. A Comprehensive pharmacist intervention to reduce morbidity in patients 80 years or older a randomized controlled trial. *Arch Intern Med* 2009;169:894–900.
8. Bladh L, Ottosson E, Karlsson J, *et al*. Effects of a clinical pharmacist service on health-related quality of life and prescribing of drugs: a randomised controlled trial. *BMJ Qual Saf* 2011;20:738–46.
9. Scullin C, Scott MG, Hogg A, *et al*. An innovative approach to integrated medicines management. *J Eval Clin Pract* 2007;13:781–8.
10. De Rijdt T, Willems L, Simoens S. Economic effects of clinical pharmacy interventions: a literature review. *Am J Health Syst Pharm* 2008;65:1161–72.
11. Chisholm-Burns MA, Graff Zivin JS, Lee JK, *et al*. Economic effects of pharmacists on health outcomes in the United States: a systematic review. *Am J Health Syst Pharm* 2010;67:1624–34.
12. Perez A, Doloresco F, Hoffman JM, *et al*. ACCP: economic evaluations of clinical pharmacy services: 2001–2005. *Pharmacotherapy* 2009;29:128.
13. Bond CA, Raehl CL, Franke T. Clinical pharmacy services and hospital mortality rates. *Pharmacotherapy* 1999;19:556–64.
14. Karnon J, Campbell F, Czoski-Murray C. Model-based cost-effectiveness analysis of interventions aimed at preventing medication error at hospital admission (medicines reconciliation). *J Eval Clin Pract* 2009;15:299–306.
15. RESPECT Trial Team. Cost-effectiveness of shared pharmaceutical care for older patients: RESPECT trial findings. *Br J Gen Pract* 2010;60:e20–7.

16. Wallerstedt SM, Bladh L, Ramsberg J. A cost-effectiveness analysis of an in-hospital clinical pharmacist service. *BMJ Open* 2012; 2:e000329.
17. Bergkvist A, Midlov P, Hoglund P, *et al.* A multi-intervention approach on drug therapy can lead to a more appropriate drug use in the elderly. L IMM-Landskrona Integrated Medicines Management. *J Eval Clin Pract* 2009;15:660–7.
18. Bondesson A, Hellstrom L, Eriksson T, *et al.* A structured questionnaire to assess patient compliance and beliefs about medicines taking into account the ordered categorical structure of data. *J Eval Clin Pract* 2009;15:713–23.
19. Bondesson A, Eriksson T, Kragh A, *et al.* In-hospital medication reviews reduce unidentified drug-related problems. *Eur J Clin Pharmacol* 2012 Sep 7. [Epub ahead of print].
20. Bergkvist Christensen A, Holmbjer L, Midlov P, *et al.* The process of identifying, solving and preventing drug related problems in the L IMM-study. *Int J Clin Pharm* 2011;33:1010–18.
21. Midlov P, Holmdahl L, Eriksson T, *et al.* Medication report reduces number of medication errors when elderly patients are discharged from hospital. *Pharm World Sci* 2008;30:92–8.
22. Bergkvist A, Midlov P, Hoglund P, *et al.* Improved quality in the hospital discharge summary reduces medication errors-L IMM: Landskrona Integrated Medicines Management. *Eur J Clin Pharmacol* 2009;65:1037–46.
23. Midlov P, Bahrani L, Seyfali M, *et al.* The effect of medication reconciliation in elderly patients at hospital discharge. *Int J Clin Pharm* 2012;34:113–19.
24. Hellstrom LM, Bondesson A, Hoglund P, *et al.* Errors in medication history at hospital admission: prevalence and predicting factors. *BMC Clin Pharmacol* 2012;12:9.
25. Midlov P, Deierborg E, Holmdahl L, *et al.* Clinical outcomes from the use of Medication Report when elderly patients are discharged from hospital. *Pharm. World Sci* 2008;30:840–5.
26. Eriksson T, Hoglund P, Holmdahl L, *et al.* Experiences from the implementation of structured patient discharge information for safe medication reconciliation at a Swedish university hospital. *Eur J Hosp Pharm Sci Pract* 2011;17:42–9.
27. Eriksson T, Holmdahl L, Midlöv P, *et al.* The hospital L IMM-based clinical pharmacy service improves the quality of the patient medication process and saves time. *Eur J Hosp Pharm Sci Pract* 2012;19:375–7.
28. Stevenson LW, Hellkamp AS, Leier CV, *et al.* Changing preferences for survival after hospitalization with advanced heart failure. *J Am Coll Cardiol* 2008;52:1702–8.
29. Peasgood T, Herrmann K, Kanis JA, *et al.* An updated systematic review of Health State Utility Values for osteoporosis related conditions. *Osteoporos Int* 2009;20:853–68.
30. Goossens LM, Nivens MC, Sachs P, *et al.* Is the EQ-5D responsive to recovery from a moderate COPD exacerbation? *Respir Med* 2011;105:1195–202.
31. Saborido CM, Hockenull J, Bagust A, *et al.* Systematic review and cost-effectiveness evaluation of 'pill-in-the-pocket' strategy for paroxysmal atrial fibrillation compared to episodic in-hospital treatment or continuous antiarrhythmic drug therapy. *Health Technol Assess* 2010;14:iii–iv, 1–75.
32. Tunis SL, Minshall ME, Conner C, *et al.* Cost-effectiveness of insulin detemir compared to NPH insulin for type 1 and type 2 diabetes mellitus in the Canadian payer setting: modeling analysis. *Curr Med Res Opin* 2009;25:1273–84.
33. Dolan P. Modeling valuations for EuroQol health states. *Med Care* 1997;35:1095–108.
34. Fenwick E, O'Brien BJ, Briggs A. Cost-effectiveness acceptability curves—facts, fallacies and frequently asked questions. *Health Econ* 2004;13:405–15.
35. Mueller S, Sponsler K, Kripalani S, *et al.* Hospital-based medication reconciliation practices: a systematic review. *Arch Intern Med* 2012;172:1057–69.



# Health economic evaluation of the Lund Integrated Medicines Management Model (LIMM) in elderly patients admitted to hospital

Ola Ghatnekar, Åsa Bondesson, Ulf Persson, et al.

*BMJ Open* 2013 3:

doi: 10.1136/bmjopen-2012-001563

---

Updated information and services can be found at:

<http://bmjopen.bmj.com/content/3/1/e001563.full.html>

---

*These include:*

- |                               |   |
|-------------------------------|---|
| <b>References</b>             | This article cites 33 articles, 4 of which can be accessed free at:<br><a href="http://bmjopen.bmj.com/content/3/1/e001563.full.html#ref-list-1">http://bmjopen.bmj.com/content/3/1/e001563.full.html#ref-list-1</a>  |
| <b>Open Access</b>            | This is an open-access article distributed under the terms of the Creative Commons Attribution Non-commercial License, which permits use, distribution, and reproduction in any medium, provided the original work is properly cited, the use is non commercial and is otherwise in compliance with the license. See:<br><a href="http://creativecommons.org/licenses/by-nc/2.0/">http://creativecommons.org/licenses/by-nc/2.0/</a> and<br><a href="http://creativecommons.org/licenses/by-nc/2.0/legalcode">http://creativecommons.org/licenses/by-nc/2.0/legalcode</a> . |
| <b>Email alerting service</b> | Receive free email alerts when new articles cite this article. Sign up in the box at the top right corner of the online article.  |
- 

## Topic Collections

Articles on similar topics can be found in the following collections

[Communication](#) (31 articles)  
[Evidence based practice](#) (103 articles)  
[Health economics](#) (58 articles)  
[Medical management](#) (40 articles)  
[Pharmacology and therapeutics](#) (144 articles)

---

To request permissions go to:

<http://group.bmj.com/group/rights-licensing/permissions>

To order reprints go to:

<http://journals.bmj.com/cgi/reprintform>

To subscribe to BMJ go to:

<http://group.bmj.com/subscribe/>

## Notes

---

To request permissions go to:

<http://group.bmj.com/group/rights-licensing/permissions>

To order reprints go to:

<http://journals.bmj.com/cgi/reprintform>

To subscribe to BMJ go to:

<http://group.bmj.com/subscribe/>