



LUND UNIVERSITY

Exploring the Grey Zone between Type 1 and Type 2 Diabetes

Bakhtadze, Ekaterine

2009

[Link to publication](#)

Citation for published version (APA):

Bakhtadze, E. (2009). *Exploring the Grey Zone between Type 1 and Type 2 Diabetes*. Department of Clinical Sciences, Lund University.

Total number of authors:

1

General rights

Unless other specific re-use rights are stated the following general rights apply:

Copyright and moral rights for the publications made accessible in the public portal are retained by the authors and/or other copyright owners and it is a condition of accessing publications that users recognise and abide by the legal requirements associated with these rights.

- Users may download and print one copy of any publication from the public portal for the purpose of private study or research.
- You may not further distribute the material or use it for any profit-making activity or commercial gain
- You may freely distribute the URL identifying the publication in the public portal

Read more about Creative commons licenses: <https://creativecommons.org/licenses/>

Take down policy

If you believe that this document breaches copyright please contact us providing details, and we will remove access to the work immediately and investigate your claim.

LUND UNIVERSITY

PO Box 117
221 00 Lund
+46 46-222 00 00

Exploring the Grey Zone between Type 1 and Type 2 Diabetes

ACADEMIC DISSERTATION

Ekaterine Bakhtadze

Lund University
Department of Clinical Sciences
Diabetes and Endocrinology
Malmö University Hospital



LUND UNIVERSITY
Faculty of Medicine

With the permission of the Medical Faculty of Lund, to be presented for public examination in the Grand Hall at the Medical Research Center, Entrance 59, Malmö University Hospital, on February 20, 2009 at 9.00 a.m.

Faculty Opponent

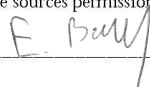
Professor Mikael Knip
Hospital for Children and Adolescents, University of Helsinki
Helsinki, Finland

Organization LUND UNIVERSITY		Document name DOCTORAL DISSERTATION
Department of Clinical Sciences Diabetes and Endocrinology Lund University Diabetes Center Malmö University Hospital, Sweden		Date of issue February 20th, 2009
Author(s) Ekaterine Bakhtadze		Sponsoring organization
Title and subtitle Exploring the Grey Zone between Type 1 and Type 2 Diabetes		
<p>Abstract</p> <p>T1D diabetes in children and young adults and is characterized by autoimmune destruction of pancreatic beta-cells. In adults the same situation is often referred to as Latent Autoimmune Diabetes in Adults (LADA). T2D is characterized by impaired insulin secretion and/or insulin resistance. Maturity-onset diabetes of the young (MODY) is an autosomal dominant diabetes with primarily defect in beta-cell function. The goal of this thesis was to genetically dissect autoimmune and non-autoimmune diabetes in young (15-34 years old) and middle-aged (40-59 years old) Swedish diabetic patients. In Study I, fpC-peptide concentrations after diagnosis were markedly lower in patients with Ab+ than in Ab-. Irrespective of clinical classification Ab+ patients showed increased frequencies of at least one risk HLA-DQB1 genotypes than Ab- patients. Ab-patients with risk HLA-DQB1 genotypes had significantly lower fpC-peptide concentrations than those without risk genotypes. In Study II, the T2D-associated genotypes of TCF7L2 CT/TT were significantly more common in young GADA- than in GADA+ patients. No such difference was seen in middle-aged patients, in whom the frequency of the CT/TT genotypes of TCF7L2 was similarly increased in GADA- and GADA+ groups, suggesting that young GADA- patients have T2D, middle-aged GADA+ patients (LADA) are different from their young GADA+ (T1D) counterparts and share genetic features with T2D. In Study III, young GADA- patients had increased frequency of common variants in T2D genes. Middle-aged GADA- diabetic patients with more than 12 risk alleles had decreased fpC-peptide concentrations than patients with less than 9 risk alleles. Also, GADA+ patients with more risk alleles had an earlier age at onset than GADA+ patients with less risk alleles. Distribution of T2D-associated risk alleles was quite similar in middle-aged patients regardless of presence of GADA. In Study IV, no significant difference in frequency of common variants in MODY genes was seen between Ab+ and Ab- individuals. In Ab+ diabetic patients carriers of the T2D-associated T allele of HNF-1a gene had higher age at onset of diabetes, but more severe symptoms of diabetes than G allele carriers. In Ab- diabetic patients carriers of the T2D-associated G allele of HNF-1β gene had less severe symptoms of diabetes at diagnosis than A allele carriers. One patient had a frameshift mutation in exon 4 designated "Pro291fsinsC" in the HNF-1a gene.</p> <p>Our studies clearly show that genetic markers markedly improve the classification of diabetes and together with islet antibodies they might be of help for diagnosis and treatment of different diabetic subgroups.</p>		
Key words: T1D, T2D, LADA, MODY, islet antibodies (ICA, GADA, IA-2A), plasma C-peptide, HLA-DQB1, INS VNTR, PTPN22, TCF7L2, GWAS, BMI		
Classification system and/or index terms (if any):		
Supplementary bibliographical information:		Language English
ISSN and key title: 1652-8220		ISBN 978-91-86253-01-1
Recipient's notes	Number of pages	Price
	Security classification	

Distribution by (name and address)

I, the undersigned, being the copyright owner of the abstract of the above-mentioned dissertation, hereby grant to all reference sources permission to publish and disseminate the abstract of the above-mentioned dissertation.

Signature



Date January 19, 2009

Exploring the Grey Zone between Type 1 and Type 2 Diabetes

ACADEMIC DISSERTATION

Ekaterine Bakhtadze

Lund University
Department of Clinical Sciences
Diabetes and Endocrinology
Malmö University Hospital



LUND UNIVERSITY
Faculty of Medicine

© 2009, Ekaterine Bakhtadze, Lund University, Department of Clinical Sciences, Malmö University Hospital, Malmö, Sweden

ISSN 1652-8220

ISBN 978-91-86253-01-1

Printed by Media-Tryck, Lund University, Lund, Sweden

Cover: Puzzle created by George Lobzhanidze, 2009

To my beloved mother and father, family and friends

ვუძღვნი ჩემს საყვარელ დედას, მამას, ოჯახის წევრებს
და მეგობრებს

All our dreams can come true, if we have the courage to pursue them.

Walt Disney

What you get by achieving your goals is not as important as what you become by achieving your goals.

Zig Ziglar

TABLE OF CONTENTS

List of original publications included in thesis	9
List of original publications NOT included in thesis	11
Abbreviations	12
Abstract	14
1. Introduction to diabetes mellitus (DM)	17
2. Diabetes mellitus- diagnosis and classification, pathogenesis and epidemiology	18
2.1 Type 1 diabetes (T1D)	20
2.2 Type 2 diabetes (T2D)	21
2.3 Latent Autoimmune Diabetes in Adults (LADA)	23
2.4 Maturity Onset Diabetes of the Young (MODY).....	23
3. Metabolic basis of diabetes	24
4. Measures of beta-cell function (C-peptide)	25
5. Autoantibodies in T1D and LADA	26
5.1 Islet cell antibodies (ICA).....	26
5.2 Glutamic acid decarboxylase antibodies (GADA).....	27
5.3 Protein tyrosine phosphatase antibodies (IA-2A)	27
5.4 Insulin autoantibodies (IAA).....	28
5.5 ZnT8 (Slc30A8) antibodies (ZnTA).....	28
6. Genetics	28
6.1 Genetic variation	28
6.2 Identifying the genes for polygenic diseases	29
6.3 Hardy-Weinberg equilibrium.....	31
6.4 Power of genetic studies	31
7. Genetics of diabetes	31
7.1 T1D.....	31
7.2 T2D.....	33
7.3 LADA	37
7.4 MODY genes.....	37
8. Aims of the presented study	39
9. Diabetic patients and healthy controls	40
9.1 Diabetes Incidence Study in Sweden (DISS).....	40
9.2 Scania Diabetes Registry	40
9.3 Skaraborg Population Registry.....	40
9.4 The Malmö Preventive Project (MPP)	41
10. Methods	41
10.1 Islet autoantibodies	41
10.2 C-peptide	43
10.3 Genotyping	43
10.4 Sequencing	47
10.5 Statistical analysis.....	47
11. Results	49
11.1 Paper I	49
11.2 Paper II.....	53
11.3 Paper III.....	54
11.4 Paper IV	57
12. Discussion	62
12.1 Study I.....	62
12.2 Study II.....	63

12.3 Study III	64
12.4 Study IV	64
Conclusions.....	67
Populärvetenskaplig sammanfattning	68
Georgian Summary (კვლევის მოკლე შინაარსი).....	71
Acknowledgement.....	74
References	77
Appendix (papers I-IV)	97

List of original publications included in thesis

- I. **E. Bakhtadze**, H. Borg, G. Stenström, P. Fernlund, H. J. Arnqvist, A. Ekblom-Schnell, J. Bolinder, J. W. Eriksson, S. Gudbjörnsdóttir, L. Nyström, L. C. Groop, G. Sundkvist. **HLA-DQB1 genotypes, islet antibodies and beta-cell function in the classification of recent onset diabetes among young adults in the nationwide Diabetes Incidence Study in Sweden** (*Diabetologia* 49: 1785-1794, 2006)

- II. **E. Bakhtadze**, C. Cervin, E. Lindholm, H. Borg, P. Nilsson, H. J. Arnqvist, J. Bolinder, J. W. Eriksson, S. Gudbjörnsdóttir, L. Nyström, C-D. Agardh, M. Landin-Olsson, G. Sundkvist, L. C. Groop. **Common variants in the *TCF7L2* gene help to differentiate autoimmune from non-autoimmune diabetes in young (15-34 years) but not in middle-aged (40-59 years) diabetic patients** (*Diabetologia* 51: 2224-2232, 2008)

- III. **E. Bakhtadze**, C. Cervin, E. Lindholm, V. Lyssenko, H. Borg, P. Nilsson, H. J. Arnqvist, J. Bolinder, J. W. Eriksson, S. Gudbjörnsdóttir, L. Nyström, C-D. Agardh, M. Landin-Olsson, L. C. Groop. **Phenotypic effects of common variants in novel type 2 diabetes genes in young and middle-aged patients with autoimmune and non-autoimmune diabetes** (*Submitted to JCEM* 2009.01.05)

- IV. **E. Bakhtadze**, C. Cervin, V. Lyssenko, H. Borg, P. Nilsson, H. J. Arnqvist, J. Bolinder, J. W. Eriksson, S. Gudbjörnsdóttir, L. Nyström, C-D, M. Landin-Olsson, L. C. Groop. **Common variants and rare mutations in *MODY* genes in young adult (15-34 years old) diabetic patients with and without autoantibodies** (*Manuscript*)

Paper I and II are reproduced with permission from publishers.

List of original publications NOT included in thesis

- I. Lindholm E, **Bakhtadze E**, Cilio C, Agardh E, Groop L, Agardh CD. **Association between LTA, TNF and AGER polymorphisms and late diabetic complications.** (*PLoS ONE*. 2008 Jun 25; 3 (6): e2546)
- II. Cervin C, Lyssenko V, **Bakhtadze E**, Lindholm E, Nilsson P, Tuomi T, Cilio CM, Groop L. **Genetic similarities between latent autoimmune diabetes in adults, type 1 diabetes, and type 2 diabetes.** (*Diabetes*. 2008 May; 57 (5): 1433-7)
- III. Lindholm, E, **Bakhtadze, E**, Sjogren, M, Cilio, C. M, Agardh, E, Groop, L, Agardh, C. D. **The -374 T/A polymorphism in the gene encoding RAGE is associated with diabetic nephropathy and retinopathy in type 1 diabetic patients** (*Diabetologia* 49: 2745-2755, 2006)
- IV. Gunnar Stenström, Anders Gottsäter, **Ekaterine Bakhtadze**, Bo Berger, and Göran Sundkvist. **Latent Autoimmune Diabetes in Adults Definition, Prevalence, β -Cell Function, and treatment** (*Diabetes, Vol. 54, supplement 2, December 2005*)
- V. Soley Thrainsdottir, Rayaz A. Malik, Ingmar Rosén, Finnbogi Jakobsson, **Ekaterine Bakhtadze**, Jesper Petersson, Göran Sundkvist, Lars B. Dahlin. **Sural nerve biopsy may predict future nerve dysfunction** (*Acta Neurol Scand in press*)

Abbreviations

Ab	Antibodies
ADA	American Diabetes Association
<i>ADAMTS9</i>	A Disintegrin-like and Metalloproteinase with Thrombospondin Type 1 Motif
ARG	Arginine
<i>BACH2</i>	BTB and CNC homology 1, basic leucine zipper transcription factor 2
BMI	Body mass index
bp	Base pair
<i>CAMK1D</i>	Calcium/Calmodulin-dependent Protein Kinase 1-delta
<i>CAPN10</i>	Calpain 10
<i>CDKAL1</i>	CDK5 regulatory subunit associated protein
<i>CDKN2A/2B</i>	Cyclin-dependent kinase inhibitor 2A2B
CI	Confidence interval
<i>CLEC16A</i>	C-type lectin domain family 16, member A
CPM	Counts per minute
<i>CTLA-4</i>	Cytotoxic T-lymphocyte-associated antigen-4
<i>CYP27B1</i>	Cytochrome P450, family 27, subfamily B, polypeptide 1
IA-2A	Protein tyrosine phosphatase-like protein antibodies
ICA	Islet cell antibodies
IFG	Impaired fasting glucose
IGT	Impaired glucose tolerance
<i>IFIH1</i>	Interferon-induced with helicase C domain 1
<i>IGF2BP2</i>	Insulin-like growth factor 2 mRNA binding protein 2
DASP	Diabetes Autoantibody Standardisation Program
DISS	Diabetes Incidence Study in Sweden
DNA	Deoxyribonucleic acid
FpC-peptide	Fasting plasma C-peptide
<i>FTO</i>	Fatso-fused toe (fat mass and obesity associates gene)
GADA	Glutamic acid decarboxylase antibody
GCK	Glucokinase gene
GIP	gastric inhibitory polypeptide
GLP-1	glucagon-like peptide 1
GWAS	Genome-wide association study
HbA _{1c}	Glycosylated hemoglobin
HDL	High density lipoprotein
<i>HHEX</i>	Hematopoietically expressed homeobox
<i>HLA</i>	Human leukocyte antigen
<i>HNF</i>	Hepatocyte nuclear factor
<i>IL2RA</i>	Interleukin 2 receptor alpha

<i>INS VNTR</i>	Alleles of variable-number tandem repeat of insulin gene
<i>JAZF1</i>	Juxtaposed with another zinc finger
JDF	Juvenile Diabetes Foundation
<i>KCNJ11</i>	Potassium inwardly-rectifying channel Subfamily J, member 11
kDa	kilodalton
LADA	Latent autoimmune diabetes in adults
LD	Linkage Disequilibrium
LDL	Low density lipoprotein
LOD	Logarithm of the odds
MDC	Malmö Diet and Cancer Study
MODY	Maturity onset diabetes of the young
mRNA	Messenger ribonucleic acid
<i>NOTCH2</i>	Notch Homolog 2
OR	Odds ratio
PCR	Polymerase chain reaction
<i>PRKCO</i>	Protein kinase C, theta
<i>PPARG</i>	Peroxisome proliferator-activated receptor gamma
<i>PTPN2</i>	Protein tyrosine phosphatase, non-receptor type 2
<i>PTPN22</i>	Protein tyrosine phosphatase, non-receptor type 22 (lymphoid)
RIA	Radioimmuno assay
RU	Relative units
SBE	Single base extension
<i>SLC30A8</i>	Solute carrier family 30 (z-transp) member 8, ZnT-8
SNP	Single nucleotide polymorphism
T1D	Type 1 diabetes mellitus
T2D	Type 2 diabetes mellitus
<i>TCF7L2</i>	Transcription factor-7-like 2
<i>THADA</i>	Thyroid Adenoma Associated
TRP	Tryptophan
<i>TSPAN8</i>	Tetraspanin 8
<i>UBASH3A</i>	Ubiquitin associated and SH3 domain containing, A
UKPDS	United Kingdom Prospective Diabetes Study
<i>WFS1</i>	Wolfram syndrome 1
WHO	World Health Organisation
ZnT8	Zinc transporter antibodies

Abstract

T1D is most common in children and young adults and is characterized by autoimmune destruction of insulin producing pancreatic beta cells, presence of certain risk genotypes such as *HLA-DQB1*, *INS VNTR*, *PTPN22* and need of insulin for survival. In adults the same situation is often referred to as Latent Autoimmune Diabetes in Adults (LADA), with age at onset after 35 years and non-insulin requiring at least for 6 month after diagnosis. On the other hand, T2D is characterized by impaired insulin secretion and/or insulin resistance, which coexists with excessive hepatic glucose production and abnormal fat metabolism. Environmental factors causing insulin resistance are puberty, pregnancy, weight gain (central obesity “apple type”) and sedentary lifestyle. Usually T2D is diagnosed after 45 years of age and in some cases is diagnosed when patients develop vascular and neuropathic complications. *TCF7L2* is by far the strongest T2D-associated gene. Maturity-onset diabetes of the young (MODY) is a monogenic form of diabetes inherited in an autosomal dominant fashion (individual has one copy of a mutant gene and one normal gene on a pair of autosomal chromosomes) characterized by nonketotic diabetes, age at onset before 25 years and primarily defect in beta-cell function. Until now, mutations in six genes have been identified as the cause of different forms of MODY, i.e. *HNF-4 α* (MODY 1), glucokinase (*GCK*) (MODY 2), *HNF-1 α* (MODY 3), *IPF1* (MODY 4), *HNF-1 β* , formerly *TCF2* (MODY 5) and *NeuroD1* (MODY 6).

The goal of this thesis was to genetically dissect autoimmune (T1D and LADA) and non-autoimmune (T2D and MODY) diabetes in young (15-34 years old) and middle-aged (40-59 years old) Swedish diabetic patients for proper diagnosis and treatment of the disease in the future.

To fulfill our goals we have selected 1642 young (15-34 years old) adult diabetic patients from Diabetes Incidence Study in Sweden (DISS) and 1619 middle-aged (40-59 years old) diabetic patients from Diabetes Registry in Southern Sweden. We determined genetic markers: *HLA-DQB1* (study I and II), *PTPN22*, *Ins VNTR*, *TCF7L2* (study II), *PPARG*, *KCNJ11*, *IGF2BP2*, *WFS1*, *CDKAL1*, *JAZF1*, *CDKN2A/2B*, *HHEX*, *SLC30A8* and *FTO* (study III) and MODY genes- *HNF-4 α* , *GCK*, *HNF-1 α* and *HNF-1 β* , formerly *TCF2* (study IV), measured islet antibodies (ICA, IA-2A and GADA) and C-peptide (marker of beta-cell function instead of insulin).

In **Study I** we evaluated whether *HLA-DQB1* genotypes facilitates the classification of diabetes as compared with islet antibodies among young (15-34 years) adult diabetic patients. Islet antibodies were found among 83% clinically considered to have T1D, 23% with T2D and 45% with unclassifiable diabetes.

fpC-peptide concentrations after diagnosis were markedly lower in patients with than in those without islet antibodies. Irrespective of clinical classification, patients with islet antibodies showed increased frequencies of at least one risk *HLA-DQB1* genotypes compared with patients without. Antibody negative patients with risk *HLA-DQB1* genotypes had significantly lower fasting fpC-peptide concentrations than those without risk genotypes. We concluded that Assessment of islet antibodies is necessary for an etiological classification of diabetic patients. *HLA-DQB1* genotyping does not improve the classification in patients with islet antibodies. However, in patients without islet antibodies, *HLA-DQB1* genotyping together with fpC-peptide measurement may be of value in the differentiation between idiopathic T1D versus T2D.

In **Study II** we evaluated whether genetic markers associated with T1D (*HLA-DQB1*, *INS VNTR* and *PTPN22*) and T2D (*TCF7L2*) could help to discriminate between autoimmune and non-autoimmune diabetes in young (15-34 years) and middle-aged (40-59 years) diabetic patients. Frequency of risk genotypes *HLA-DQB1*, *PTPN22* CT/TT, *INS VNTR* class I/I and *INS VNTR* class IIIA/IIIA was increased in young and middle-aged GADA+ compared with GADA- patients. T2D-associated genotypes of *TCF7L2* CT/TT of rs7903146 were significantly more common in young GADA- than in GADA+ patients. No such difference was seen in middle-aged patients, in whom the frequency of the CT/TT genotypes of *TCF7L2* was similarly increased in GADA- and GADA+ groups. We concluded that common variants in the *TCF7L2* gene help to differentiate young but not middle aged GADA+ and GADA- diabetic patients, suggesting that young GADA- patients have T2D and that middle-aged GADA+ patients (LADA) are different from their young GADA-positive (T1D) counterparts and share genetic features with T2D.

In **Study III** we genotyped a panel of 10 novel T2D-associated risk genotypes in young (15-34 years) and middle-aged (40-59 years) GADA+ and GADA-diabetic patients and evaluated how they would modify the clinical phenotype. Young GADA- patients had increased frequency of risk variants in the *PPARG*, *IGF2BP2*, *WFS1*, *JAZF1* and *CDKN2A/2B* genes compared with an elderly non-diabetic control group. Also risk variants in *JAZF1* (AA) and *CDKN2A/2B* (TT) were more common in GADA- than in GADA + young diabetic patients. As expected middle-aged GADA- patients had increased prevalence of risk variants in the *PPARG*, *IGF2BP2*, *WFS1*, *CDKAL1*, *JAZF1*, *SLC30A8*, *CDKN2A/2B*, *KCNJ11* and *FTO* genes compared with non-diabetic controls with no significant difference compared with GADA+ patients. Middle-aged GADA-diabetic patients with more risk alleles (≥ 12) had decreased C-peptide concentrations than patients with less risk alleles (≤ 9). Also, GADA+ patients with more risk alleles had an earlier age at onset than GADA+ patients with less risk alleles. Distribution of T2D-associated risk alleles was quite similar in

middle-aged patients regardless of presence of GADA. T2D- associated risk genotypes modify the disease phenotype (age at onset and C-peptide) in middle-aged but not in young diabetic patients.

In **Study IV** we evaluated whether common variants in MODY genes can discriminate between autoimmune and non-autoimmune diabetes in young adult diabetic patients and screened antibody negative diabetic patients with ≥ 3 members with diabetes in the family for *HNF-4 α* , *GCK* and *HNF-1 α* mutations. No significant difference in frequency of common variants in MODY genes was seen between Ab⁺ and Ab⁻ individuals. In Ab⁺ diabetic patients carriers of the T2D-associated T allele of the *HNF-1 α* gene had higher age at onset of diabetes, but severe symptoms of diabetes (weight reduction and/or polyuria) than G allele carriers. Finally, in Ab⁻ diabetic patients carriers of the T2D-associated G allele of *HNF-1 β* gene had less frequent weight reduction and/or polyuria and ketonuria at diagnosis than A allele carriers. One patient had frameshift mutation in exon 4 designated “Pro291fsinsC” in the *HNF-1 α* gene. Common variants in MODY genes do not discriminate between young patients with autoimmune and non-autoimmune diabetes but they do influence onset and presentation of the disease.

Our studies show that genetic markers clearly improve the classification of diabetes and together with islet antibodies they might be of help for diagnosis and treatment of different diabetic subgroups.

1. Introduction to diabetes mellitus (DM)

Diabetes is a disease recognised from the ancient times. The first description comes from the 3rd dynasty Egyptian papyrus by the physician Hesy-Ra in 1550 BC, who mentioned polyuria (frequent urination) as a symptom. The term diabetes (passing through) was introduced by the Greek physician Aretaeus in 150 A.D, who described it as “the melting down of flesh and limbs into urine.” In 164 A.D, another Greek physician, Galen of Pergamum mistakenly diagnosed diabetes as an ailment of the kidneys. The sweet taste of diabetic urine, described in ancient Indian texts and noted by Avicenna (980-1037) and Morgagni (1635-1683), was attributed to the passage of absorbed water and nutrients unchanged into the urine. In 1000s diabetes was commonly diagnosed by “water tasters”, who tasted urine from the people suspected to have diabetes and since it was sweet-tasting, the Latin word for honey – mellitus – was incorporated into the condition's name and “diabetes mellitus” was coined. In 1774 Mathew Dobson confirmed that the sweet taste of urine and blood was due to high content of glucose, which suggested that diabetes was not just a kidney problem, as it was previously been believed (1). In 1866, the British physician George Harley first made the distinction between types of diabetes, one “gaining weight and strength on diet, so called excessive formation of sugar diabetes and another, in the same regimen of diet losing both flesh and energy, so called defective assimilation of sugars (mal-nutrition) diabetes.” This was followed by French physician Etienne Lancereaux in 1880, who made a distinction between lean and obese diabetes: “Le diabète maigre et le diabète gras.”

Insulin was discovered in 1921 (3) and insulin treatment had been initiated in increasing number of diabetic patients. By that time physicians were classifying the patients using clinical characteristics, such as age at onset, body weight and insulin requirement. The first test used to distinguish between the two main forms of diabetes was response to insulin. Austrian investigators Falta and Boller drew attention to the existence of insulin-sensitive and -resistant forms of diabetes (4). Insulin-sensitive patients readily suppressed urinary excretion of glucose and developed hypoglycemia in response to a few units of insulin, whereas withdrawal of insulin rapidly resulted in glycosuria and ketosis. These features were lacking in insulin-insensitive patients. A clear distinction between insulin-sensitive and -resistant forms of diabetes was made by the British scientist Harold Himsworth in 1936 (5). He developed a challenge test in which glucose was given by mouth while insulin was injected intravenously. Based upon careful anthropometrical measurements of diabetic patients, two different groups, pancreatic diabetes and diabetes of pituitary origin, were described by Draper, in 1940. These findings were adopted by Lister in 1951, who noted “two broad groups of diabetics- group I - the young, thin, non-arteriosclerotic group with normal blood pressure and usually an acute onset of the disease, and group

II - the older, obese, arteriosclerotic group with hypertension and usually an insidious onset (6)".

2. Diabetes mellitus- diagnosis and classification, pathogenesis and epidemiology

Diabetes mellitus is a multifactorial metabolic disorder which results from the complex interaction of genetic and environmental factors. Diabetes comprises a group of disorders with distinct pathophysiological mechanisms, but sharing the common phenotype of hyperglycaemia (increased blood sugar levels). The end point of the disease process is insulin deficiency, which can be absolute or relative in the coexistence of insulin resistance (response to insulin by the target tissues, such as muscle, liver and adipose tissue). The result is chronic hyperglycaemia, caused by reduced insulin secretion, decreased insulin utilisation and increased liver glucose production, which in the long run lead to diabetic complications. Diabetes is a leading cause of end-stage renal disease (ESRD), non-traumatic lower extremity amputations, adult blindness and cardiovascular complications.

The first guideline for the diagnosis and classification of diabetes was published by WHO in 1965 (7) and was entirely based on age at onset of diabetes (juvenile and maturity-onset). In 1976 the names type 1 and type 2 diabetes were reintroduced (8). According to the classification of diabetes by US National Diabetes Data Group in 1979 (9), the terms juvenile and maturity onset diabetes were replaced by insulin-dependent diabetes mellitus (IDDM) or type 1 and non-insulin-dependent diabetes (NIDDM) mellitus or type 2 diabetes. Patients with any form of diabetes may require insulin therapy; for this reason, the new classification based on disease etiology emerged. In 1997 ADA (10) and in 1998 WHO (11) introduced new diagnostic criteria for diabetes classification where the terms type 1 and type 2 diabetes were retained and a plasma glucose level of 7.0 mmol/l (126 mg/dL) instead of 7.8 mmol/L (140 mg/dL) was recommended as a new threshold for diabetes. The American Diabetes Association (ADA) in 2003 (12) reviewed its diagnostic criteria and recommended a new threshold for impaired fasting glucose (IFG) 5.6 mmol/l (100 mg/dL) instead of 6.1 mmol/L (110 mg/dL). The new diagnostic criteria are based on the following premises: 1) symptoms of diabetes (polyuria, polydipsia and unexplained weight loss) together with random plasma glucose concentration above 11.1 mmol/L (200mg/dL) or 2) fasting plasma glucose concentration above 7.0 mmol/l (126mg/dL) on two different days or 3) two-hour 75g oral glucose tolerance test (OGTT) value above 11.1 mmol/l (200mg/dL) (**Table 1**). In the latest updates by WHO in 2006 (13) and ADA in 2009 (14) no changes to the diabetes classification were made.

Table 1. Comparison of 1999 WHO and 2003 ADA diagnostic criteria

	WHO 1999	ADA 2003
Diabetes		
Fasting glucose	≥7.0 mmol/l	≥7.0 mmol/l
	or	or
2-hour glucose*	11.1 mmol/l	11.1 mmol/l
IGT		
Fasting glucose	<7.0 mmol/l (if measured)	Not required
	or	
2-hour glucose	≥7.8 and <11.1 mmol/l	≥7.8 and <11.1 mmol/l
IFG		
Fasting glucose	6.1 to 6.9 mmol/l (measurement recommended)	5.6 to 6.9 mmol/l (measurement not recommended)
2-hour glucose	(if measured should be <7.8 mmol/l)	(if measured should be <11.1 mmol/l)

* Venous plasma glucose 2-hours after 75g oral glucose load

From Definition and diagnosis of diabetes mellitus and intermediate hyperglycemia: report of a WHO/IDF consultation. 2006: Geneva (13).

Etiologically diabetes is divided into four general subclasses: 1) type 1, primarily caused by autoimmune destruction of pancreatic beta-cell and characterized by absolute insulin deficiency 2) type 2, characterized by insulin resistance and relative insulin deficiency or primarily insulin secretory defects with or without insulin resistance 3) “other” specific types of diabetes (associated with identifiable clinical conditions or syndromes) and 4) gestational diabetes mellitus (**Figure 1**).

In addition to these clinical categories, two forms of pre-diabetes 1) impaired fasting glucose (IFG) and 2) impaired glucose tolerance (IGT) have been defined to describe intermediate metabolic states between normal glucose homeostasis and overt diabetes. Both impaired fasting glucose and impaired glucose tolerance are strong risk factors for future diabetes as well as cardiovascular disease (15, 16). In most types of diabetes, the individual traverses from normal glucose tolerance to abnormal glucose tolerance and to overt diabetes (**Figure 1**).

Stages	Normo-glycemia	Hyperglycemia			
	Normal glucose tolerance	Prediabetes	Diabetes Mellitus		
		Impaired fasting glucose or Impaired Glucose Tolerance	Not insulin requiring	Insulin requiring for control	Insulin requiring for survival
Types					
Type 1*	←	→	→	→	→
Type 2	←	←	→	→	→
Other specific types**	←	←	→	→	→
Gestational diabetes**	←	←	→	→	→

Figure 1. Disorders of glycemia: etiological types and clinical stages (13, 14).

*Even after presenting with ketoacidosis, these patients can briefly return to normoglycemia without requiring continuous therapy (i.e., "honeymoon" remission);

**in rare instances, patients in these categories (e.g., Vacor toxicity, type 1 diabetes presenting in pregnancy) may require insulin for survival.

The prevalence of diabetes is increasing dramatically worldwide, being 30 million in 1985, 177 million in 2000 and it is estimated to reach 366 million by the year 2030 (17). The increase in the prevalence of type 2 diabetes is much more rapid, due to population growth, aging, urbanization, and increasing prevalence of obesity and physical inactivity (18-20).

2.1 Type 1 diabetes (T1D)

Type 1 diabetes is a multifactorial disease, which is primarily caused by autoimmune destruction of pancreatic beta-cells leading to absolute insulin deficiency (**Figure 2**) and need of insulin for survival. Antibodies against islet cell (ICA), insulin (IAA), glutamic acid decarboxylase (GADA), protein tyrosine phosphatase (IA-2A) and, recently discovered zinc transporter Slc30A8 are autoimmune markers rather than the cause of type 1A diabetes (21). Severe insulin deficient diabetes without islet antibodies, so called type 1B diabetes, has also been reported (22). It has been recognized that destruction of pancreatic beta-cell is mediated by cytokines or by direct CD8 cytotoxic T-lymphocyte activity (23-26). At T1D onset, islet antibodies are present in about 98% of children (27, 28) and 85% of young adults (29, 30). Features of diabetes do not become evident until the majority of beta cells are destroyed (~80%).

The onset of T1D is acute and presents as polyuria (frequent urination), polydipsia (thirst), weight loss, fatigue and blurred vision. Infection is reported to precipitate the disease onset, although only congenital rubella and parotitis infections have a clear association with the disease (31). Enterovirus, coxsackievirus and retrovirus infections have also shown an association with type 1A diabetes. Other environmental risk factors seem to include early introduction of bovine milk, fast weight gain during early life, toxins, psychological stress, sterile environment and vitamin D deficiency (32-39). There are clear geographical variations in the occurrence of the disease. T1D is more prevalent in Finland, Scandinavia, and Sardinia; less prevalent in most of Southern Europe and the Middle East; and uncommon in Asian nations (40-42). It accounts for 10-15% of diabetes among children and young adults of Caucasian origin. In addition, T1D incidence rates appearing to be increasing (42), at least in children.

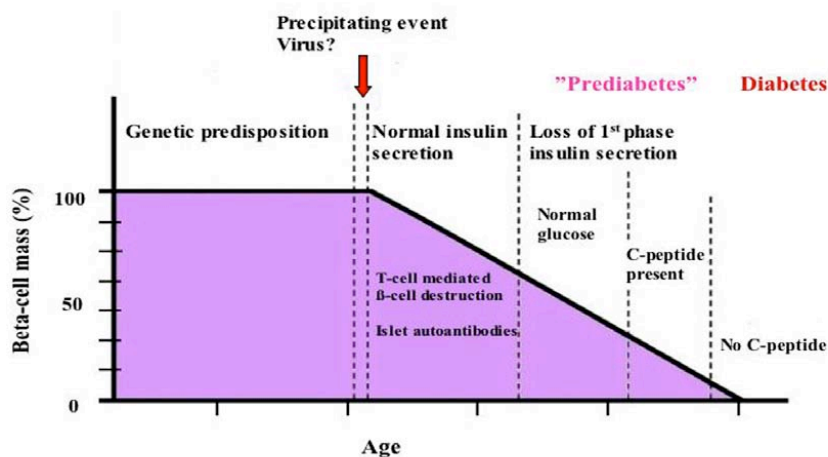


Figure 2. Hypothetical model of development autoimmune type 1 (type 1A) diabetes. Individuals with a genetic predisposition are exposed to an immunological trigger that initiated an autoimmune process, resulting in a gradual decline in beta cell mass (*Modified from Eisenbarth GS. Type 1 diabetes mellitus: a chronic autoimmune disease. N Engl J Med 1986; 314: 360-368 (43)*)

2.2 Type 2 diabetes (T2D)

Type 2 diabetes is a multifactorial disease characterised by impaired insulin secretion and insulin resistance, which coexists with excessive hepatic glucose production and abnormal fat metabolism. Environmental factors causing insulin

resistance are puberty, pregnancy, weight gain (central obesity “apple type”) and sedentary lifestyle. In the prediabetic state, with increased insulin resistance, pancreatic beta-cells are capable to produce enough insulin to maintain glucose tolerance within normal range. When beta-cells no longer are able to compensate for the insulin resistance diabetes becomes manifested (44). Increasing adipocyte mass accompanying obesity in T2D results in increasing levels of non-esterified free fatty acids (NEFFA) which further impairs glucose utilization in skeletal muscle, promotes glucose production by the liver, and impairs beta cell function (45) (**Figure 3**).

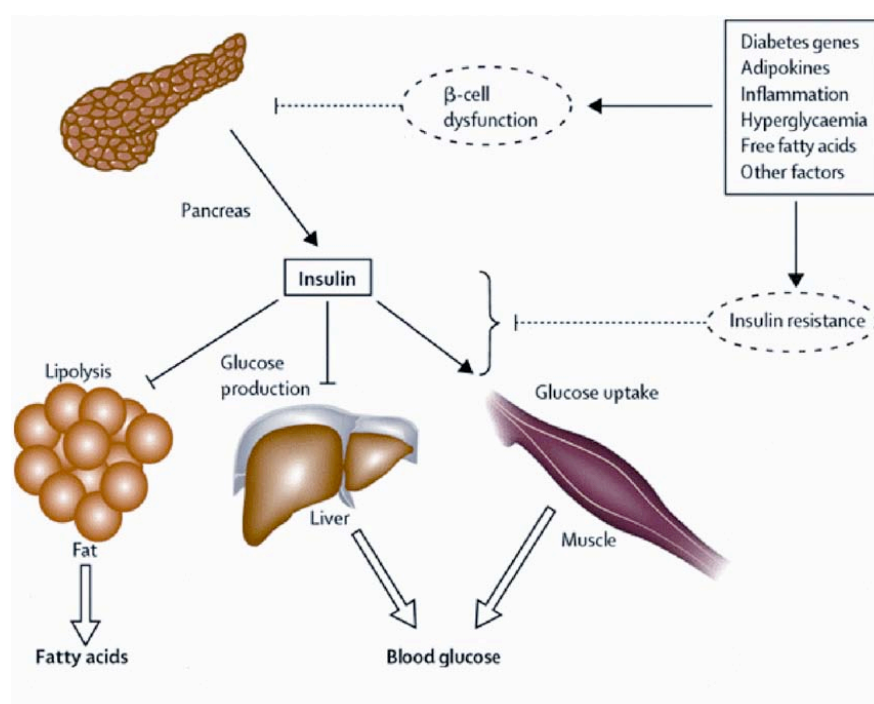


Figure 3. Pathophysiology of hyperglycaemia in T2D (45).

Usually T2D is diagnosed after 40 years of age. Classical symptoms of the disease are mild and may exist several years before patients seek medical attention. Moreover, in some cases, patients are diagnosed when they develop vascular and neuropathic complications. Ketosis rarely develops, but can appear as a result of fasting and increased oxidation of fat. T2D patients are not dependent on insulin for survival, but they may require it for proper glycaemic control.

T2D accounts for >95% of all diagnosed cases of diabetes globally. The prevalence of T2D is highest in the Pima/Papago Indians (50%), and certain Pacific islands (e.g. Nauru) (42%), high in Middle East (17%-20%), intermediate in countries such as India and the United States (8-11%), and

relatively low in Europe (5-8%) (46, 47). An alarming increase of T2D prevalence among children and young adults has been reported, which has been attributed to the worldwide obesity epidemic (48).

2.3 Latent Autoimmune Diabetes in Adults (LADA)

In clinical practice main diagnostic criteria of diabetes are related to phenotypic presentation, e.g. age at onset, BMI and insulin requirement. However, it is not that uncommon that disease presentation does not exactly follow the classical frame. For example approximately 25% of patients who develop T1D are diagnosed after the 35 years of age (49). In 1970's Irvine and colleagues reported that the presence of ICA was observed in 11-14% of adult onset diabetic patients who did not require insulin for at least 3 month after diagnosis (50, 51). First in 1986 (52) and then in 1988, Groop and colleagues showed that insulin requiring T2D patients had high prevalence of ICA as well as the T1D risk HLA genotypes. The name Latent Autoimmune Diabetes in Adults (LADA) was subsequently introduced to classify these patients (53, 54). Thereafter, several other names, including slowly progressive forms of T1D (55) and 1.5 diabetes (56) have also been proposed to define this form of diabetes, but LADA is the most commonly used eponym. It was later demonstrated that GADA are the most prevalent islet autoantibodies present in LADA patients, whereas IAA and IA-2A are less prevalent (57).

Clinically LADA is characterized by lower BMI, less features of metabolic syndrome, more severe reduction in insulin secretion and rapid progression to insulin treatment as compared to the common forms of T2D (58-60). Definition of age for LADA has varied from 25 (UKPDS) to 40 years (61, 62). LADA accounts for approximately 10% of the patients initially diagnosed as having T2D (63).

Presently, the diagnosis of LADA is based on: adult onset diabetes (>35 years), presence of GADA and insulin independence at diagnosis (59).

2.4 Maturity Onset Diabetes of the Young (MODY)

First described by Fajans and colleagues in 60's, maturity-onset diabetes of the young (MODY) is a monogenic form of diabetes inherited in an autosomal dominant fashion (individual has one copy of a mutant gene and one normal gene on a pair of autosomal chromosomes) characterized by nonketotic diabetes, age at onset before 25 years and primarily defect in beta-cell function (64). In monogenic forms of diabetes, environmental factors play a minor role in determining whether or not a genetically predisposed person develops clinical diabetes (65).

Until now, mutations in six genes have been identified as the cause of different forms of MODY, i.e. *HNF-4 α* (MODY 1) (66), glucokinase (MODY 2) (67, 68), *HNF-1 α* (MODY 3) (69), *IPF1* (MODY 4) (70), *HNF-1 β* , formerly *TCF2* (MODY 5) (71) and *NeuroD1* (MODY 6) (72). Of them all except *GCK*, represent transcription factors involved in beta-cell development.

Although the exact prevalence of MODY is not known, it is suggested that it accounts for 1% to 5% of all diabetes cases (64). In addition, there is increasing evidence that common variants in MODY genes also predispose to T2D (73-82).

3. Metabolic basis of diabetes

Diabetes develops due to inadequate production of insulin by pancreatic beta-cells and/or resistance to actions of insulin (stimulation of glucose uptake, inhibition of hepatic glucose production and lipolysis). Glucose is a major regulator of insulin secretion. A glucose level >3.9 mmol/l enhances protein translation and processing and thereby stimulates insulin synthesis. Amino acids, ketones, gastrointestinal peptides and neurotransmitters also influence insulin secretion. Glucose enters the beta-cells via the glucose transporter GLUT2. It is phosphorylated by glucokinase (the rate-limiting step of glucose metabolism) to form glucose-6-phosphate. Further processing generates ATP, which inhibits the ATP-sensitive potassium channel inducing beta-cell membrane depolarization, opens the voltage dependent calcium channel which result in calcium influx into the cell and insulin release (83) (**Figure 4**). Insulin secretion has a pulsatile pattern, with small secretory bursts occurring about every 10 minutes.

Insulin secretion is higher when glucose is given orally than intravenously, because of the simultaneous release of gut peptides known as incretins (e.g., glucagon-like peptide 1 (GLP-1) and gastric inhibitory polypeptide (GIP)). Insulin acts through the insulin receptor, which is a heterodimer containing two α and β chains linked by disulfide bridges. Target tissues for insulin action are muscle, fat and liver whereas glucose uptake in the brain is insulin independent. A number of other hormones, such as glucagon, growth hormone, cortisol and catecholamines counteract the effect of insulin. Glucagon is secreted by pancreatic alpha cells when blood glucose or insulin levels are low and stimulates glycogenolysis and gluconeogenesis by the liver and renal medulla. Glucagon release is normally inhibited by hyperglycaemia, but this effect can be impaired in people with impaired glucose tolerance and diabetes (84).

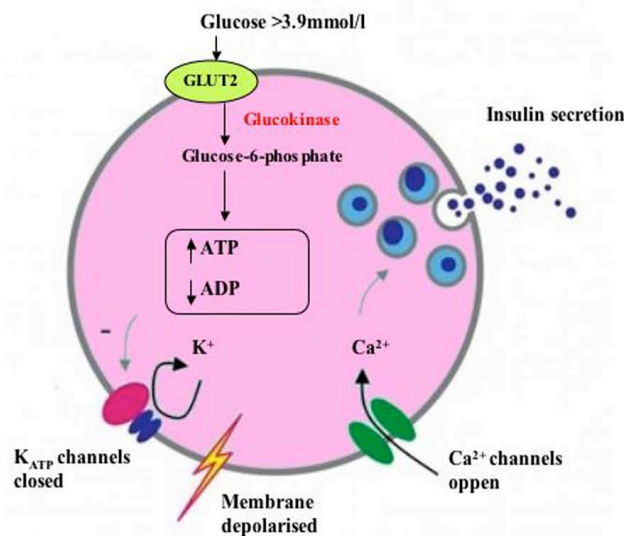


Figure 4. Insulin release from pancreatic beta-cells.

4. Measures of beta-cell function (C-peptide)

The precursor of insulin, proinsulin and C-peptide (connecting peptide) were described by Steiner in 1967. Measuring C-peptide to assess beta-cell function was introduced in 1972 (85-87). Insulin is produced by beta-cells in the pancreatic islets of Langerhans. It is initially synthesized as 86 amino-acid single chain precursor polypeptide -preproinsulin, which after proteolytic processing produces proinsulin. Proinsulin is structurally related to insulin-like growth factors I and II, which bind weakly to the insulin receptor. Proinsulin is then cleaved to produce equimolar amounts of insulin A (21 amino acids) and B (30 amino acids), which are connected by disulfide bonds and C-peptide (**Figure 5**). The mature insulin molecule and C-peptide are stored together and co-secreted from the secretory granules directly into the portal vein in response to raised glucose (88). Although secreted in equimolar amounts insulin is less useful than C-peptide for the assessment of beta-cell function. The reason for this is that about 50% of insulin is degraded in the liver whereas metabolism of C-peptide mainly occurs in the kidney. Also, in insulin-treated patients insulin measurements represent the sum of endogenous and exogenous insulin. It

though has a longer half-life than insulin which makes it less suitable for assessment of early phase insulin secretion than insulin (89). C-peptide measurements are also useful in the evaluation of hypoglycaemia. It is still an open question whether C-peptide has any biological function (90). Although it has been ascribed some effect in diabetic complication, predominantly neuropathy, these findings have been difficult to confirm (91-93). Plasma or serum C-peptide can be measured in the fasting state, non-fasting or after oral or intravenous glucose stimulation. Since fasting C-peptide measurements are more standardized than post-prandial test, in this thesis fasting C-peptide measurements were used (94).

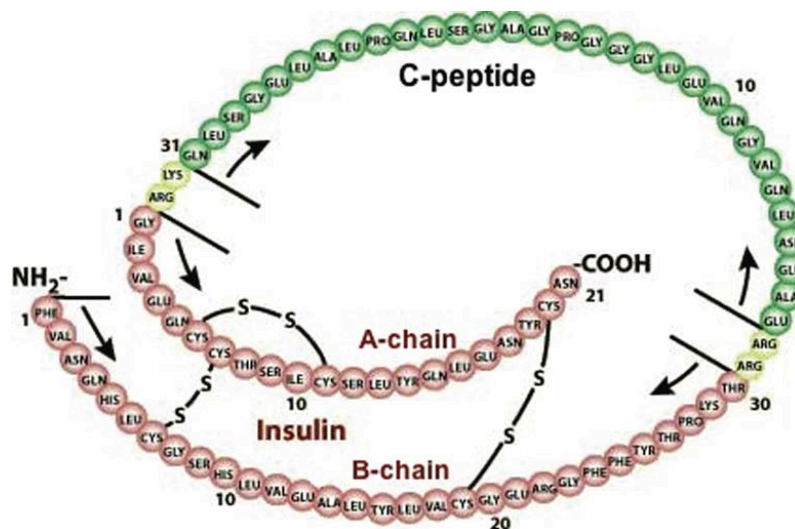


Figure 5. Molecular structure of proinsulin.

5. Autoantibodies in T1D and LADA

5.1 Islet cell antibodies (ICA)

Antibodies against the pancreatic islets of Langerhans, islet cell autoantibodies (ICA) are directed against cytoplasmic antigens in all islet cells (95). Islet cell autoantibodies were first described by Bottazzo in 1974 (96). ICA is present in about 80% of patients classified as having type 1 diabetes (97, 98), in 5-10% of patients classified as having type 2 diabetes (62, 99, 100) and less than 3% of the healthy population (97, 101). The number of patients having ICA decreases with time after the diagnosis of diabetes (102). The disadvantage of ICA measurement assay is that antibody is not antigen(s) specific and results are investigator-dependent as the assay requires microscopic assessments of

immunofluorescence. Also it requires pancreas from persons with blood group O. Therefore, there was a continuous search for other more specific antigens.

5.2 Glutamic acid decarboxylase antibodies (GADA)

In 1982 the 64-kDa protein was found to be immunoprecipitated with circulating auto-antibodies in serum from T1D patient's (103). In 1990, the 64-kDa protein was identified as glutamic acid decarboxylase (GAD), a target antigen for auto-antibodies in patients with T1D and latent autoimmune diabetes in adults (LADA) (104). Also, very high levels of GAD antibodies (GADA) are found in the rare progressive neurological disease Stiff-Man Syndrome. GAD is the rate-limiting enzyme in the conversion of glutamic acid to the inhibitory neurotransmitter gamma-aminobutyric acid (GABA). GAD exists in two isoforms GAD 65 (65kDa) and GAD 67 (67kDa). Only GAD 65 is present in the pancreas, and most of the GADA in T1D patients reacts with GAD 65 (105). GAD 65 is a membrane-attached protein of 585 amino acids located in synaptic-like microvesicles, which are present in nerve cells, pancreatic islets and testis. In the pancreatic islets GABA is thought to be involved in paracrine signalling (106). In contrast to the situation in Stiff-Man Syndrome, in T1D GADA reacts with different structures (epitopes) on the GAD 65 molecule (107), starting within the middle portion and rapidly spreading to the other regions of the molecule (108).

5.3 Protein tyrosine phosphatase antibodies (IA-2A)

In 1990, immunoprecipitation of islet cell extracts with serum of T1D patients demonstrated reactivity against a non-GAD 64kDa protein (109). Further treatment of this protein with trypsin resulted in 40kDa and 37kDa fragments, later identified as two transmembrane protein tyrosine phosphatase-like proteins called IA-2 (ICA512) and IA-2 β (Phogrin) (110, 111). Antibodies against IA-2 are more common than against IA-2 β in T1D patients. IA-2 β has 74% identity to the intracellular and 26% identity to the extracellular domains of IA-2. IA-2 is a 979 amino acid protein, which consists of a signal peptide, extracellular, transmembrane and intracellular domain. Autoantibodies to IA-2 are largely conformational in nature and are directed exclusively to epitopes in the intracellular domain (112). IA-2 is expressed in neuroendocrine cells throughout the body, including pancreatic alpha and beta cells. The protein is an integral component of dense core vesicles (DCV). Disruption of IA-2 has been associated with impaired insulin release and glucose intolerance (113, 114), whereas over-expression of IA-2 promoted beta-cell apoptosis (115). These findings though await replication in independent studies.

5.4 Insulin autoantibodies (IAA)

Although insulin antibodies have been detected in serum from patients treated with bovine and pig insulin since early 70's, it was realized in 1983 that insulin antibodies could be detected also in patients not treated with insulin, i.e. autoantibodies against insulin (IAA). These antibodies though have value only in patients not treated with insulin (116, 117). IAA have been reported to be more common in young children with diabetes than in adolescents and adult diabetic patients (118-120).

5.5 ZnT8 (Slc30A8) antibodies (ZnTA)

The Zinc transporter (Slc30A8) protein has recently (2007) been identified as a novel and major autoantigen in T1D (121). This molecule is a multispanning transmembrane protein that resides in the insulin secretory granules. The use of an antigen construct spanning the C-terminal amino acids 268–369 resulted in an autoantibody assay with disease sensitivity of 50% a specificity of 98% and a positive predictive value of 37% for T1D. Autoantibodies to Slc30A8 do not usually appear before the age of 3 years.

It is important to keep in mind the possibility that the primary autoantigen has not yet been identified for T1D. Due to the low prevalence of IAA in young adults and the very recent identification of ZnTA, these antibodies have not been studied in this thesis.

6. Genetics

6.1 Genetic variation

Genetic variation consists of both chromosomal aberrations and difference in DNA sequence between individuals. Such variations can consist of tandem repeats represented by satellites (alphoid DNA), minisatellites (variable number of tandem repeats, VNTR and telomere), microsatellites (short tandem repeats, STR) and telomeric sequences, insertions or deletions of one or more bases and single base substitution so called single nucleotide polymorphism (SNP) (122). SNPs are commonly biallelic, but rarely can have three or more alleles. The number of SNPs is estimated to be around 10 million, i.e. on average one SNP every 300 base pairs (bp) (123, 124).

Closely linked alleles on the same chromosome which are inherited together are called haplotypes. Haplotype may also refer to two or more loci on the chromosome.

6.2 Identifying the genes for polygenic diseases

The first observed link between genes and disease came at the beginning of the 20th century, by the description of alcaptonuria by Archibald Garrod as the first inborn errors of metabolism. Garrod described the mode of inheritance and the strong penetrance of the disease suggesting a Mendelian mode of inheritance. This initial discovery paved way for the identification of thousands of rare Mendelian diseases, such as cystic fibrosis, Huntington disease and etc, all of which show early onset and strong genetic component. In contrast, common forms of human diseases, such as diabetes, show complex pattern of inheritance and late onset. Unlike to the identification of the genetic causes of Mendelian diseases, the identification of genetic causes of complex diseases is more difficult, because there is no clear inheritance pattern, many common genetic variants contribute to the disease phenotype, they show low penetrance and complex interaction with other genes and the environment (125).

Several approaches are being used in the search for susceptibility loci predisposing to polygenic diseases: linkage studies, association studies and genome-wide association studies (GWAS).

Linkage studies

Linkage is the phenomenon describing a departure from the independent assortment of two loci, i.e. the tendency for alleles at loci that are close together on the same chromosome to be transmitted together, as an intact unit, through meiosis. Linkage analysis is a tool to map genes in families to determine whether two genes show linkage (are linked) when passed on from one generation to the next. Linkage studies analyze whether there is linkage between a chromosomal region and disease assuming no knowledge of the underlying defects and searching for loci based upon their location in the genome. This is usually performed by using 400 to 500 highly polymorphic microsatellite markers, ca 10 cM apart, spread over entire genome. Linkage is reported as a logarithm of odds (LOD) score (126). A LOD score greater than 3.0 is considered evidence for linkage, whereas a LOD score less than -2.0 excludes the linkage.

Association studies

If there is a prior strong candidate gene for the disease, the best approach is to search for association between SNPs in the gene and the disease. This can either be a case-control or nested cohort study. In a case-control study the inclusion criteria for the cases are predefined and thereafter matched individual controls are searched for (or selected), representing the same ethnic group as the cases. In a cohort study affected and unaffected groups- not individuals- are matched. Ideally cohorts are population-based but often they represent consecutive patients from an outpatient clinic. It is preferable that controls are older than cases to exclude the possibility that they still will develop the disease. The

question of matching is crucial for the results, matching for a parameter influenced by the genetic variant (e.g. BMI) might influence its effect on a disease like T2D. If cases and controls are not drawn from the same ethnic group, a spurious association can be detected due to ethnic stratification.

One way to circumvent this problem is to perform a family-based association study. Distorted transmission of alleles from parents to affected offspring would indicate that the allele showing excess transmission is associated with the disease. The untransmitted alleles serve as control. This transmission disequilibrium test (TDT) represents the most unbiased association study approach but suffers from the drawback of low power as only transmissions from heterozygous parents are informative. The prerequisite of DNA from parents usually enrich for individuals with an earlier onset of the disease.

It is still debated whether common or rare variants are the cause of common complex diseases. The haplotype approach would work for common but not for rare variants. The common variant-common disease hypothesis assumes that relatively ancient common variants increase susceptibility to common diseases like diabetes. These variants would be enriched in the population, as they have been associated with survival advantage during the evolution, so called thrifty genes (127). Storage of surplus energy during periods of famine may have been beneficial for survival, while in the Westernized society we rather need genetic variants which would waste energy.

Genome-wide association studies (GWAS)

GWAS have recently been applied to identify the loci increasing susceptibility to complex common diseases. With GWAS it became possible to examine SNPs across the whole genome, without prior knowledge of disease mechanisms, and potentially identify totally novel susceptibility factors. GWAS involve scanning thousands of samples, either as case-control cohorts or in family trios, utilizing hundreds of thousands of SNP markers. Power is important for GWAS and is mandatory to have sufficient number of rigorously characterized cases and controls. Also crucial for the success is a comprehensive map of >500,000 carefully selected SNPs, accurate genotyping facilities, and proper processing of the enormous data sets and replication of identified associations in an independent populations.

The number of tests is a major factor in determining the statistical power of GWAS. Although genetic markers are not strictly independent because of LD, the current convention is to apply a Bonferroni correction (which assumes independence and is thus overly conservative) by dividing the conventional P value of 0.05 by the number of tests performed. This requires P values = 5×10^{-7} to 5×10^{-8} range to define a stringent level of significance in GWAS (128).

6.3 Hardy-Weinberg equilibrium

“There is not the slightest foundation for the idea that a dominant trait should show a tendency to spread over a whole population, or that a recessive trait should die out”, stated G.H Hardy (129). Gene frequencies can be high or low regardless of how the allele is expressed and can change, depending on the conditions that exist. Changes in gene frequencies over time results in evolution. The Hardy-Weinberg (HW) principle describes a hypothetical situation in which there is no change in the gene pool (frequencies of alleles) over time, hence no evolution. Consider a population with the alleles A and a, p the frequency of the dominant allele A and q the frequency of the recessive allele a, i.e. $p + q = 1$. The Hardy-Weinberg equilibrium assumes random distribution of alleles, which can be described as $p^2 + 2pq + q^2$. If the frequencies of A and a remain unchanged from generation to generation the Hardy-Weinberg equilibrium (HWE) is met. This though requires that 1) the population is large enough to minimize random sampling errors, 2) random mating, 3) no mutation, 4) no migration. 5) no natural selection.

6.4 Power of genetic studies

Power of a statistical test is the probability that the test will reject the null hypothesis. Power depends on sample size, frequencies of the predisposing alleles, genotypes, or haplotypes and effect size. The most important factor influencing the power is the sample size (130). Power calculations in this thesis were performed using the Genetic Power Calculator (www.psych.uni-duesseldorf.de/aap/projects/gpower/)

7. Genetics of diabetes

7.1 T1D

Inherited genetic factors influence both susceptibility and resistance to T1D. There is significant familial clustering with an average prevalence of 6% in siblings compared to 0.4% in general population. The sibling relative risk (λ_s) can be calculated as the ratio of the risk to siblings over the disease prevalence in the general population, and thus $\lambda_s = 6/0.4 = 15$ (131, 132). In addition, the overall rate of concordance of T1D in monozygotic twins is 50% (133) and in dizygotic twins 11% (134).

HLA

Association between human leukocyte antigen (HLA) and T1D was described almost 35 years ago (135). HLA is so far the strongest genetic loci associated with T1D and explains about 40% of familiar aggregation of the disease (**Figure**

5). The major determinants of diabetes susceptibility are DR and DQ molecules of HLA class II genes (135-142). They are membrane glycoproteins, expressed on antigen presenting cells and involved in antigenic peptide presentation to T-helper lymphocytes. The ability of class II MHC molecules to present antigen is dependent on the amino acid composition of their antigen-binding sites. Amino acid substitutions may influence the specificity of the immune response by altering the binding affinity of different antigens for class II molecules. Because of close proximity, usually HLA alleles are inherited together creating the T1D risk haplotypes: *DQA1**0501-*DQB1**0201 also called DQ2 and *DQA1**0301-*DQB1**0302 called DQ8 (138). The haplotype *DQA1**0102-*DQB1**0602 provides dominant protection from T1DM and is called DQ6 (143). Assuming that *DQA1* and *DQB1* alleles are in linkage disequilibrium (LD) (alleles of different genes are non-randomly associated with each other on a haplotype) we genotyped only the *HLA-DQB1* gene in thesis to explain risk associated with T1D.

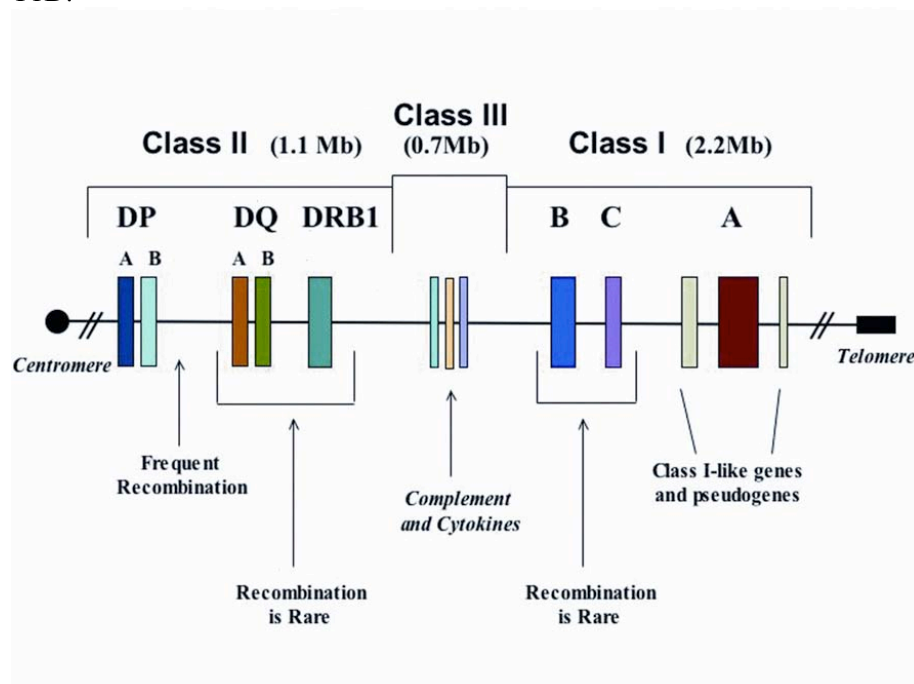


Figure 6. The human leukocyte antigen (HLA) complex on chromosome 6.

Insulin gene

The insulin gene association with T1D was first described in 1984 (144). The insulin gene is located on chromosome 11p15 and is the second strongest genetic risk factor for T1D. A polymorphism in the insulin minisatellite or variable number of tandem repeats (*INS VNTR*) of 14-15bp oligonucleotides is

located 596bp upstream of the insulin gene translation initiation site (144). There are three main types of *INS* VNTR defined by their size: class I (26–63 repeats), class II (approximately 80 repeats) and class III (140–200 repeats). Class I *INS* VNTRs are associated with T1D and are thought to influence insulin mRNA expression within the thymus (145-148). Some studies have shown association between the *INS* VNTR class III and T2D (149, 150).

***PTPN22* gene**

Protein tyrosine phosphatase (*PTPN22*) gene is located on chromosome 1p13 and the third confirmed gene influencing T1D risk. The gene is encoding a lymphoid-specific phosphatase that acts as a negative regulator of T-cell activation by dephosphorylating T-cell receptor activation-dependent kinases (151, 152). It contains a gain of function mutation resulting in increased susceptibility to autoimmunity. The amino acid change (TRP to ARG) disrupts binding of *PTPN22* to an intracellular kinase, Csk (153).

Other genes associated with T1D

The cytotoxic T-lymphocyte-associated antigen-4 gene (*CTLA4*) encodes a costimulatory molecule that is expressed on the surface of activated T cells. Protein product of variants in the *CTLA4* locus transmits inhibitory signals of T-cell activation (154, 155). The association of *CTLA4* with T1D is predominantly seen in patients with co-existing autoimmune thyroid disease (AITD) (154).

Also a noncoding SNP in the interleukin 2 receptor alpha (*IL2RA*) gene are associated with T1D. *IL2RA* is also known as CD25 and expressed on regulatory T cells (156-158).

Genome-Wide Association Studies for T1D

During the last years GWAS have identified a number of novel T1D susceptibility loci. Most consistent associations with T1D have been shown for the interferon-induced helicase (*IFIH1*) (159-161) and C-type lectin domain family 16 gene A, formerly *KIAA0350*, (*CLEC16A*) (162-164). The role of other genes remain to be validated *CYP27B1*, *PTPN2*, *UBASH3A*, *BACH2* and *PRKCQ* (162, 165-173).

7.2 T2D

T2D has a strong genetic component. This is supported by a clear familial aggregation of the disease and from twin studies showing higher concordance in monozygotic twins (70%) than in dizygotic twins (20-30%) (174-177). If both parents have T2D, the risk approaches 70% (178). The sibling relative risk (λ_s) for T2D is 3.5 (35% vs 10%) (179). In the Botnia prospective study we have

demonstrated that first-degree family history is associated with 2-fold increased risk of future T2D (180).

A challenge has been to identify genetic variants that explain the excess risk associated with a family history of diabetes. From a long list of candidate genes, variants in only three have been consistently associated with T2D: *TCF7L2*, *KCNJ11*, and *PPARG* (181-186). However, in 2007, a number of novel genetic variants (*CDKAL1*, *IGF2BP2*, the locus on chromosome 9 close to *CDKN2A/2B*, *FTO*, *HHEX*, *SLC30A8*, and *WFS1*) were shown to increase susceptibility to T2D in several studies. Furthermore, a recent meta-analysis identified six novel variants (*JAZF1*, *CDC123/CAMK1D*, *TSPAN8/LGR5*, *THADA*, *ADAMTS9*, and *NOTCH2*) that are associated with T2D (187-193).

TCF7L2

The transcription factor 7-like 2 gene (*TCF7L2*) encodes for a transcription factor involved in the Wnt signaling pathway. *TCF7L2* is by far the strongest T2D associated gene. *TCF7L2* is one of the earliest examples of a gene discovered to be associated with T2D based upon its position in the genome rather than function. *TCF7L2* was identified in a follow-up analysis of a region on chromosome 10q identified through linkage analysis. The mechanisms by which it increases the risk of T2D seem to include impaired beta cell function, possibly through an impaired incretin (GLP-1 and GIP) effect on insulin secretion (194). Notably, the risk of diabetes associated with the *TCF7L2* gene is abolished by treatment with metformin or life style intervention (195).

PPARG

The peroxisome proliferator-activated receptor gamma (*PPARG*) gene encodes for a nuclear receptor regulating adipogenesis. The gene is also expressed in the pancreatic beta cells (196, 197).

In the 5' untranslated end of the gene is an extra exon B that contains a SNP changing a proline in position 12 of the protein to alanine. The rare Ala allele is seen in about 15% of Europeans and was shown to be associated with increased transcriptional activity, increased insulin sensitivity and protection against T2D in an initial study (198). This study was followed by a number of studies, which could not replicate the initial finding. However, an analysis of parent-offspring trios showed excess transmission of the Pro allele to affected offspring and a meta-analysis combining the results from all published studies showed a highly significant association of the Pro12Ala with type 2 diabetes (183). The Pro12Ala polymorphism is now one of the best-replicated genes for T2D.

Mutation in *PPARG* gene can also cause familial lipodystrophy type 3 with early-onset diabetes and insulin resistance (199). The *PPARG* receptor agonists thiazolidinediones represent a novel group of anti-diabetic drugs aimed to reduce insulin resistance (200).

KCNJ11

The beta cell ATP-sensitive K⁺ channel (KATP) is composed of two subunits: a high-affinity sulfonylurea receptor (SUR1) and an inward rectifier (Kir6.2) (201). As described above, after glucose transport into the pancreatic beta-cells, the increase in ATP closes the K⁺ channels resulting in calcium influx, membrane depolarization and insulin release (83). A Glu23Lys polymorphism (E23K) in *KCNJ11* has been associated with T2D and a modest impairment of insulin secretion (184, 202). In addition, activating mutations in the *KCNJ11* gene leave the channel open causing permanent neonatal diabetes (203, 204); this effect is markedly stronger than that seen for the E23L polymorphism (205, 206). *KCNQ1* encodes another potassium channel that has recently been implicated in type 2 diabetes in two Japanese GWAS (207, 208). The ATP dependent K⁺ channels are targets for the anti-diabetic drugs sulfonylureas.

WFS1

In a study of 1536 SNPs in 84 candidate genes for T2D (191) only one of these genes, *WFS1* was associated with T2D. *WFS1* encodes wolframin, a protein that is defective in individuals with the Wolfram syndrome. This syndrome is characterized by diabetes insipidus, juvenile diabetes, optic nerve atrophy and deafness. Thereby *WFS1* can be considered a functional candidate gene for T2D.

Genome-Wide Association Studies for T2D

The year 2007 brought a real breakthrough for disease genetics, not at least for genetics of diabetes.

The reason was that several GWAS using DNA chips with more than 500,000 SNPs in a large number of patients with type 2 diabetes and controls were published (187-190, 192). The transcription factor gene *TCF7L2* was on top of the list of each WGAS with a joint *p*-value in three scans of 10⁻⁵⁰. In addition to *TCF7L2*, *PPARG*, *KCNJ11* and *WFS1* the first GWAS identified at least six novel genes/loci for T2D: *CDKN2A/2B*, *IGF2BP2*, *CDKAL1*, *SLC30A8* and *HHEX*.

In 2008 a meta-analysis of three large GWAS revealed additional six loci associated with T2D (*JAZF1*, *CDC123/CAMK1D*, *TSPAN8/LGR5*, *THADA*, *ADAMTS9* and *NOTCH2*) (193). Most of the newly identified T2D genes are affecting insulin secretion rather than insulin resistance (44, 209-214).

The *CDKN2A/2B*, *CDKAL1*, *JAZF1*, and *CDC123/CAMK1D* genes encode for cell cycle proteins, *HHEX* encodes for a transcription factor, and *SLC30A8* for the above-described Zn transporter, ZnT8.

Of the new T2D genes, the fat mass and obesity associated (*FTO*) gene increases risk of T2D by increased adiposity (215, 216). Interestingly, the same variants in the *FTO* gene are also associated with increased physical activity in children (217).

CAPN10

In the first successful linkage study of a complex disease like T2D, Graeme Bell and co-workers reported in 1996 significant linkage between T2D in Mexican American sib pairs and a locus on chromosome 2q37 (also referred to NIDDM1) (218). Three intronic SNPs in the gene coding for calpain 10 (*CAPN10*) could explain most of the linkage (219). Calpains are Ca^{2+} -dependent cysteine proteases. It has been shown that in diabetes, calpains play a role in regulating insulin secretion and insulin action (220-223). The *CAPN10* association with T2D has been controversial (224, 225) since it has not been replicated in all studies, nor in the GWAS.

Calpains are also associated with other diseases, such as limb girdle muscular dystrophy type 2A, cataracts, Alzheimer's disease and also contribute to ischemic tissue damage following stroke, myocardial infarction and traumatic brain and spinal cord injuries (226).

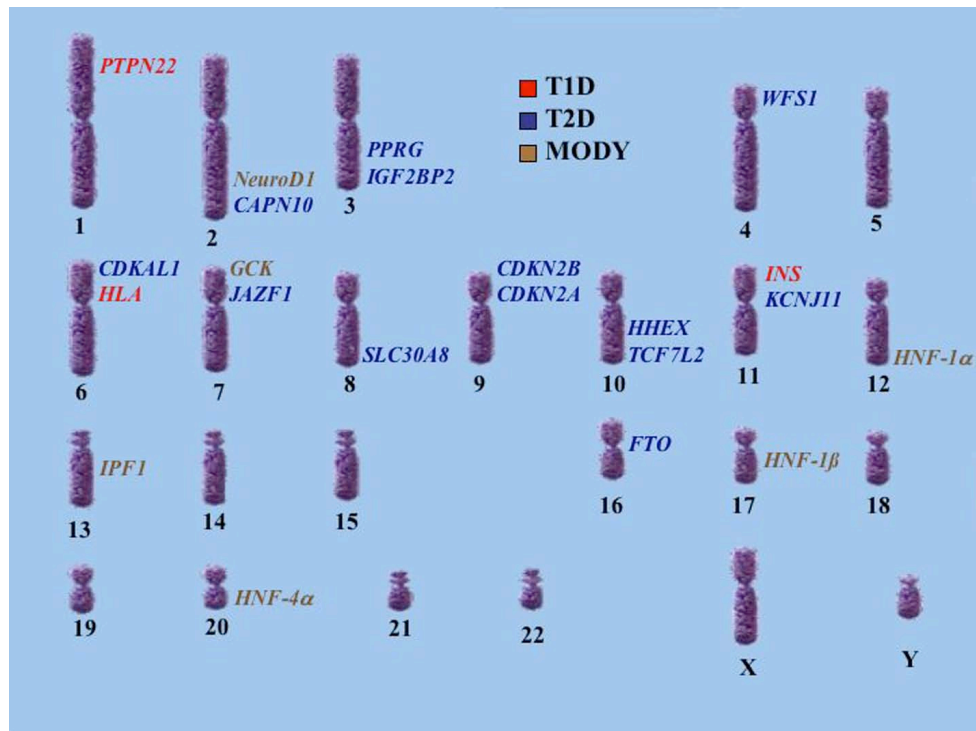


Figure 7. Chromosomal locations of some genes studied in this thesis.

7.3 LADA

Although there are limited number of studies which have tried to dissect the genetics of LADA, LADA has been shown to share *HLA* predisposition with T1D (227-230). However, there have not been any reports showing association between LADA and T2D genes until this question was addressed in the current thesis and an accompanying paper by Cervin et al (231, 232).

7.4 MODY genes

GCK (glucokinase) (MODY 2): Glucokinase is highly expressed in the pancreatic beta cell and the liver. It catalyzes the transfer of phosphate from adenosine triphosphate (ATP) to glucose to generate glucose-6-phosphate. Glucokinase functions as the glucose sensor in the beta cell by controlling the rate of glucose entry into the glycolytic pathway (glucose phosphorylation). In the liver glucokinase promotes storage of glucose as glycogen in the postprandial state. Heterozygous mutations leading to partial deficiency of glucokinase cause MODY2, whereas homozygous mutations resulting in complete deficiency of the enzyme lead to permanent neonatal diabetes mellitus (233). Mutation in the *GCK* gene was the first described genetic cause of MODY (67, 68).

Hepatocyte nuclear factors (HNFs)

HNF-1 α , *HNF-4 α* and *HNF-1 β* constitute an interacting network of transcription factors that function together to control gene expression during embryonic development and in adult tissues where they are co-expressed. In the pancreatic beta cell, these transcription factors regulate insulin gene expression as well as expression of proteins involved in glucose transport and metabolism and mitochondrial and lipoprotein metabolism (234-236). *HNF-1 α* , *HNF-4 α* and *HNF-1 β* are the members of the nuclear receptor family. *HNF-1 α* and *HNF-4 α* are expressed in the liver, gut, kidney and pancreas (237-239). The expression of *HNF-1 α* is regulated at least in part by *HNF-4 α* (240).

The *HNF-1 α* gene (MODY3): Heterozygous mutations in the gene encoding *HNF-1 α* are the most common cause of MODY diabetes (241). It has been shown that common variants in the *HNF-1 α* gene (I27L, A98V) are associated with an increased risk of type 2 diabetes (73, 78, 242, 243).

The *HNF-4 α* gene (MODY1): The expression of *HNF-4 α* isoforms is regulated by a proximal promoter (P1), which is liver specific and an alternative promoter (P2) found 46 kb upstream of P1, mainly regulating transcription in beta-cells (244, 245). It has been shown that common variants in both P1 and P2

promoter of the *HNF-4 α* gene are associated with an increased risk of type 2 diabetes (77, 246-248).

The *HNF-1 β* gene (MODY5) is also referred to as *TCF2*. Mutations in the gene cause various phenotypes including abnormalities in kidney, pancreas, and genital tract formation (249-251). The risk variants of *HNF-1 β* gene could confer the susceptibility for type 2 diabetes development (73, 78, 80, 252).

The *IPF-1* (Insulin promoter factor-1) gene (MODY 4), also referred to as *PDX1*, is homeodomain-containing transcription factor that was originally isolated as a transcriptional regulator of the insulin and somatostatin genes (253, 254). It also plays a central role in the development of the pancreas as well as in regulating expression of a variety of pancreatic islet genes (255). Homozygous mutation in the *IPF-1* gene causes pancreatic agenesis whereas heterozygous *IPF-1* mutations have been associated with T2D (218) .

The *NeuroD1* (Neurogenic differentiation factor-1) gene (MODY 6), also referred to as *Beta2*, a basic helix-loop-helix transcription factor is required for normal pancreatic islet development (256). Mutations in the *NeuroD1* gene represent rare causes of MODY.

8. Aims of the presented study

The goal of this project was to study genetic factors associated with autoimmune and non-autoimmune diabetes in young (15-34 years) and middle-aged (40-59 years) Swedish diabetic patients

The specific aims were:

- 1) To evaluate the role of *HLA-DQB1* genotypes and islet antibodies in the classification of diabetes in young adult diabetic patients
- 2) To study whether genetic markers associated with type 1 (*HLA-DQB1*, *INS VNTR* and *PTPN22*) and type 2 diabetes (*TCF7L2*) could help to discriminate between autoimmune and non-autoimmune diabetes in young and middle-aged diabetic patients
- 3) To study associations between 10 novel type 2 diabetes-associated risk genotypes with autoimmune and non-autoimmune diabetes in young and middle-aged diabetic patients
- 4) To study whether common variants in MODY genes can discriminate between autoimmune and non-autoimmune diabetes in young adult diabetic patients and to screen for MODY mutations in antibody negative diabetic patients with a strong family history of diabetes (≥ 3 members in the family)

9. Diabetic patients and healthy controls

9.1 Diabetes Incidence Study in Sweden (DISS)

The Diabetes Incidence Study in Sweden was initiated in 1983 (257). The study is a nationwide registry of incident cases of diabetes aged 15 to 34 years. Diabetes was classified at registration by the reporting physician as T1D, T2D, gestational or unclassifiable. Registration form includes age, gender, height, body weight, diagnosis date, family history of diabetes, diabetic symptoms (polyuria, weight loss, fatigue), coma, duration of symptoms (weeks), initial treatment (diet, oral hypoglycemic agents or insulin), degree of ketonuria, presence of ketoacidosis (bicarbonate <15 mmol/l and/or pH <7.3). Fasting or random diagnostic blood glucose values were also reported. From 1998, blood samples were taken for DNA, islet antibody analysis (ICA, GADA and IA-2A), fasting plasma C-peptide was measured 3-6 month after diagnosis. The objectives of the DISS study were to follow the trends in incidence of diabetes in young adult population and find the clues to the putative aetiology and pathogenesis of diabetes and its complications. During a five-year period (Jan 1, 1998 to December 31, 2002), 2077 young adult (15-34 years of age) diabetic patients were reported to the Diabetes Incidence Study in Sweden (DISS).

9.2 Scania Diabetes Registry

A diabetes registry in Southern Sweden (Diabetes 2000) was initiated in 1996 and hitherto 7,461 patients have been registered. The majority of the patients (4,981) have been registered at the department of Endocrinology, University Hospital Malmö, whereas the remaining were registered at the Trelleborg hospital or health care centers in the Malmö and Trelleborg regions.

The registry includes information about onset of diabetes, and mode of treatment. At registration and at least once a year thereafter the following measurements were performed: body weight, height, blood pressure, fasting concentrations of plasma glucose, HbA_{1c}, serum total cholesterol, HDL-cholesterol and triglycerides in addition to the urinary albumin excretion rate (AER) and P-creatinine. Plasma glucose, C-peptide and GAD antibodies (GADA) are measured at the registry inclusion. At annual follow-ups, signs of retinopathy, nephropathy, neuropathy and macrovascular disease are recorded. All patients gave their informed consent and the registry was approved by the Swedish Data Inspection Board and the Ethics Committee of Lund University.

9.3 Skaraborg Population Registry

216 subjects without diabetes from the county of Skaraborg (280, 000 inhabitants), Sweden were used as controls for *HLA-DQB1* genotyping (258).

9.4 The Malmö Preventive Project (MPP)

Malmö Preventive Project was initiated in Malmö, Sweden in 1974 as a population-based health screening. The main aim was to identify individuals at risk of development of diabetes and cardiovascular diseases (259, 260). Today DNA and follow up data are available for about 17,000 individual (44) out of 33, 000 participants. As controls in this study, we included 11,923 non-diabetic Swedish individuals (age >40 years) without family history of diabetes or antihypertensive treatment from the Malmö Preventive Project (MPP).

10. Methods

10.1 Islet autoantibodies

ICA were determined by a prolonged two-colour immunofluorescence assay by incubating patient plasma with pancreas cryosections from blood group 0 subjects as antigen (261). The detection limit for ICA was 4 Juvenile Diabetes Foundation (JDF) units for the first pancreas used in samples tested until April 1999 and 5 JDF units for the second pancreas used in samples tested from April 1999 and onwards. In the last ICA Proficiency Test (13th) our ICA assay performed with 100% sensitivity and 100% specificity (ICA is not included in the Diabetes Autoantibody Standardization Program (DASP)).

GADA in young patients were measured by a radioligand binding assay, based on human ³⁵S-labeled recombinant GAD 65 (262). Overnight incubations with the ³⁵S-GAD 65 were made at +4° C for each patient plasma sample duplicate. Then two aliquots from each incubation were incubated with protein A Sepharose for 45 minutes on a 96-well filtration plate for collection of immunocomplexes. After filtrating and washing, the bottom of each well was punched into a scintillation bottle, and the radioactivity was counted in a liquid scintillation counter. Pooled serum from three blood donors served as a negative control and plasma from a patient with high levels of GADA, diluted in negative control serum, served as a positive control. The results are presented as GADA index=100 x (cpm of mean activity of all four measurements for sample-cpm of the negative control)/ (cpm of the positive control-cpm of the negative control). A GADA index >4.6 was considered as positive (97.5 percentile of 165 non-diabetic controls aged 7-34 years). In the first DASP (2000) the GADA assay showed a sensitivity of 80% and a specificity of 96%, in the second (2002), a sensitivity of 88% and specificity of 87% and in the third DASP (2003), a sensitivity of 82% and a specificity of 93%.

GADA in the middle-aged patients were measured by a radioligand binding assay using ³⁵S-labelled in-vitro translated recombinant GAD 65 prepared using human GAD 65 DNA from plasmid pGAD65cDNAlI (263). Human plasma was

incubated with ³⁵S-labelled GAD 65 during overnight at +4° C on a plate shaker. Then duplicates of plasma ³⁵S-GAD 65 were incubated with 50% protein A Sepharose on precoated microfilter plates for 50 minutes at +4° C. Since protein A interacts with the Fc region of IgG subclasses, they precipitate on Sepharose. After dissolving the precipitate in scintillation liquid activity was determined on a beta scintillation counter (264). The results are presented as relative units (RU): RU=100x (cpm of sample mean-cpm of three negative controls)/(cpm of a positive internal reference serum-mean cpm of three negative controls). The cut-off limit for positivity was 5 RU, which is comparable to 32 IU/ml according to the new WHO standard (265) and represents mean+3 SD of 296 healthy control participants. In the first DASP (2000) the GADA assay showed a sensitivity of 76% and a specificity of 94%, in the second (2002) a sensitivity of 88% and a specificity of 96%, and in the third DASP (2003) a sensitivity of 88% and a specificity of 94% (266). From the beginning of the year 2000 (in 41% of registry patients), the results were given as IU/ml (267).

Comparison of two assay methods of GADA measurement. To evaluate the correlations between two assay methods of GAD antibody measurements used in young (DISS study) and middle-aged patients (Scania Diabetes Registry), we selected n=276 young diabetic patients and re-ran GAD antibodies by the method used in the middle-aged patients. In total 62% of them were GADA positive by the method applied in the young subjects and 61% of them were GADA positive with the method used in the Registry. Eight of the GAD-positive patients with the first assay were negative with the second assay (7%). The correlation coefficient between two methods was $r=0.93$ with $p<0.0001$ (Table 2).

Table 2. Comparison of two methods of GAD antibody measurements

GADA measurements in young diabetic patients		
Reruns (Method used in Diabetes Registry)	Original method (Method used in DISS)	
	Positive	Negative
Positive	161 (95%)	8 (7%)
Negative	8 (4.7%)	99 (93%)

IA-2A assay principle is the same as for the ³⁵S GADA assay: Human ³⁵S labelled recombinant IA-2 was synthesized in the same way as ³⁵S GAD₆₅ described above, in the young diabetic patients, using circular pSP64 poly (A) vector with an IA-2ic insert (268). IA-2A index >1.0 was considered as positive (97.5 percentile of 165 non-diabetic controls aged 7-34 years). In the first DASP

(2000), our IA-2A assay showed a sensitivity of 58% and a specificity of 100%, in the second (2002), a sensitivity of 62% and specificity of 100%, and in the third DASP (2003), a sensitivity of 64% and a specificity of 100%.

10.2 C-peptide

Plasma C-peptide was determined by radioimmunoassay (RIA) (Peninsula Laboratories, Inc, Belmont, Ca, USA) in both in young (age 15–34 years) (142) and middle-aged (age 40–59 years) diabetic patients (267). The reference range for healthy participants after 12 h fasting was 0.25 to 0.75 nmol/l. The detection limit was 0.10 nmol/l. A C-peptide concentration 0.1-0.25 nmol/l was considered as low and <0.10 nmol/l as unmeasurable (beta-cell failure) (269). The reference range for healthy subjects after 12-h fasting was 0.25 to 0.75 nmol/l.

10.3 Genotyping

HLA-DQB1 genotyping - Paper I and Paper II

HLA-DQB1 typing was performed by time-resolved fluorometry based triple-label hybridization assay. Using a primer pair with biotinylated 3' primers, the 158 bp second exon of *HLA-DQB1* gene was amplified by PCR. The amplification product was bound to streptavidin-coated microtitration plates and denatured with NaOH. After washing, bound DNA was assessed using two different hybridisation mixtures with lanthanide (III) chelate-labelled DNA probes specific for the *HLA-DQB1* alleles. One mixture contained europium (Eu)-labelled and samarium (Sm)-labelled internal reporter probes for *DQB1**0602 and *0603 alleles (*0602-*0603) and *DQB1**0603 and *0604 (*0603-*0604) alleles respectively; a terbium (Tb)-labelled consensus sequence-specific probe (Tb-DQB1 control) was used as control of PCR amplification. The other mixture contained Tb-, Sm- and Eu-labelled probes specific for *DQB1**0201, *DQB1**0301 and *DQB1**0302 alleles, respectively. To measure probe hybridisation, microtitration plates were evaluated by time-resolved fluorescence (Delfia Research Fluorometer; Wallac OY, Turku, Finland) (**Figure 8**). Different emission wavelengths and delay times were used to distinguish the signals of each lanthanide label (270). From 1564 genotyped DISS patients, genotyping success rate was 1537 (98%) and from 1365 diabetes registry patients 1350 (99%). The risk *HLA-DQB1* genotypes include *02/*0302, *0302/X, *0302/*604 (270, 271) and in the second paper we refer to risk *HLA-DQB1* without any further risk genotype specification. In control subjects, *HLA-DQB1* locus was amplified by PCR, followed by dot-blotting onto nitrocellulose filters, and hybridization using the radioactively end labelled sequence-specific oligonucleotide probes, then autoradiography was done (258).

Victor2 MC v. 2.7 03-07-11 18:54:44 IDD_TB Page 1

CODE	R602/3	R603/4	R302	R301	R201	KONS	S602	S603	S302	S301	S201	NOTE
PCR	1.2	3.2	6.8	1.1	11	38	3	8	18	3	30	
PCR	1.3	3.2	5.2	1.3	7	36	4	9	14	4	21	
1	7.0	1.4	2.3	1.4	520	235	3	1	1	1	222	
1	6.4	1.3	2.5	1.6	542	179	4	1	1	1	303	02 !
2	59.4	2.2	87.4	5.0	603	778	8	0	11	1	77	
2	42.8	1.9	82.9	4.3	598	634	7	0	13	1	94	0302, 02
3	1.1	1.4	4.4	1.9	611	250	0	1	2	1	244	
3	1.0	1.4	4.7	2.0	541	213	0	1	2	1	254	02 !
4	3.7	1.3	64.4	1.5	448	688	1	0	9	0	65	
4	3.5	1.1	75.8	1.9	553	628	1	0	12	0	88	0302, 02
5	7.3	1.3	125.0	1.6	656	856	1	0	15	0	77	
5	6.5	1.5	16.9	1.7	601	750	1	0	16	0	80	0302, 02
6	2.4	1.4	104.7	2.5	3	753	0	0	14	0	0	
6	2.0	1.5	106.7	2.4	2	648	0	0	16	0	0	0302
7	1.2	1.4	12.8	1.1	605	848	0	0	13	0	71	
7	1.1	1.4	91.7	1.6	544	703	0	0	13	0	77	0302, 02
8	3.1	1.4	3.0	200.5	459	767	0	0	0	26	60	
8	4.5	1.4	3.8	257.7	575	715	1	0	0	36	80	0301, 02
9	1.9	1.3	111.8	1.8	7	712	0	0	16	0	1	
9	1.9	1.3	121.0	1.7	8	642	0	0	19	0	1	0302
10	119.7	61.2	2.3	1.7	689	006	119	5	0	0	68	
10	886.1	82.4	2.2	1.4	642	774	114	5	0	0	83	0602, 02

Figure 8. HLA-DQB1 assay, time-resolved fluorometry output. Code row shows different HLA-DQB1 alleles (brown outline). PCR row shows PCR in sterile water. Kons column shows DNA amplification for each sample (outlined in blue). Black circles outline fluorescent signal for HLA-DQB1 alleles for each sample. Note column (outlined in black) shows HLA-DQB1 genotypes for each sample.

TaqMan allelic discrimination method - Paper II, Paper III and Paper IV

The ABI Prism 7900 Sequence Detection System (7900HT system; Applied Biosystems, Foster City, CA, USA) uses fluorescent probes to discriminate between the two different alleles of the SNP. It starts with a PCR reaction to amplify the desired DNA fragment and allele specific probes are used to detect the alleles. The probes are designed to make either a perfect match or a mismatch. The fluorescent signal is sent out when the polymerase cleave attached probes so that the dye is separated from the quencher. As PCR cycles proceed, the fluorescent signal will increase exponentially and will thereby be detectable (Figure 9).

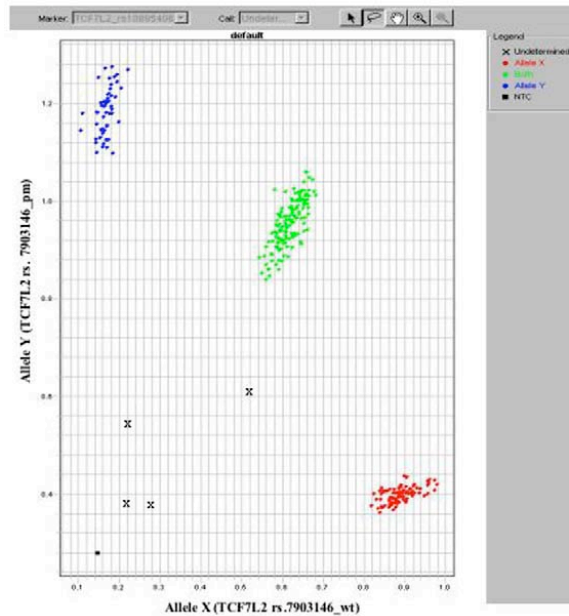


Figure 9. TaqMan allelic discrimination assay. The output signals are plotted in a scatterplot with one fluorescent colour signal intensity on the y-axis (FAM) and the other on the x-axis (VIC). Three clusters that represent the three genotypes (wt/wt, wt/pm and pm/pm) could be determined. Signals that fall outside of these clusters are “undetermined”

Insulin VNTR (rs689 and rs3842755), PTPN22 (rs2476601) and TCF7L2 (rs7903146 and rs10885406)

Two SNPs associated with *INS* VNTR were genotyped, i.e. rs689 (-23HphI variant, a surrogate for the subdivision of VNTR into class I [A] and III [T] alleles) and rs3842755, which also allows subdivision of class III into IIIA (C) and IIIB (A) alleles (145, 272, 273). The SNP rs2476601 (also denoted 1858C/T) was genotyped in the *PTPN22* gene (274, 275). From young diabetic patients 1,564 DNA samples were available and genotyping success rate was 98% for *PTPN22*, 98% for *INS* VNTR rs689 and 98% for *INS* VNTR rs3842755. In genotyped 1312 middle-aged diabetic patients genotyping success rate was 99% for *PTPN22*, 98% for *INS* VNTR rs689 and 96% for *INS* VNTR rs3842755. Random samples (3.2%) for each SNP were re-genotyped with reproducibility of 99.9%.

SNP rs7903146 in the *TCF7L2* gene, previously shown to be associated with T2D, and a more recently described microsatellite marker, captured by SNP rs10885406, were genotyped (182, 276). In young diabetic patients 1,564 DNA

samples were available and genotyping success rate was 98% for *TCF7L2* rs7903146 and 98% for *TCF7L2* rs10885406. In middle-aged diabetic patients 1614 DNA samples were available and genotyping success rate was 96% for *TCF7L2* rs7903146 and 99% for *TCF7L2* rs10885406. Random samples (3.2%) for each SNP were re-genotyped for quality control. The T allele of *TCF7L2* rs7903146 was in strong linkage disequilibrium with the G allele of *TCF7L2* rs10885406 ($D'=0.99$; $r^2=1.0$).

***PPARG* (rs1801282), *KCNJ11* (rs5219), *IGF2BP2* (rs4402960), *WFS1* (rs10010131), *CDKAL1* (rs7754840), *JAZF1* (rs864745), *CDKN2A/2B* (rs10811661), *HHEX* (rs1111875) and *FTO* (rs9939609)**

Genotyping in all young patients (n=1,564) and in the LADA and adult T1D patients (n=348) was performed by an allelic discrimination method on the Applied Biosystems 7900HT platform. Genotyping for control subjects (n=11,923) was performed using allelic discrimination method for *IGF2BP2* (rs4402960), *FTO* (rs9939609), *WFS1* (rs10010131), *HHEX* (rs1111875), and *JAZF1* (rs864745), *SLC30A8* (rs13266634).

***HNF-4 α* (rs4810424, rs2144908 and 3212198), *GCK* (rs1799884), *HNF-1 α* (rs1169288) and *HNF-1 β* (rs757210 and rs4430796)**

Genotyping in all young patients (n=1,564) and in a selection of controls (n=5,795) was performed by an allelic discrimination method on the Applied Biosystems 7900HT platform.

KASPar® SNP genotyping method - Paper III. PCR SNP genotyping system, The KASPar® assay system, Kbioscience, UK (<http://www.kbioscience.co.uk/>) relies on the discrimination power of a novel form of competitive allele specific PCR to determine the alleles at a specific locus within genomic DNA for SNP typing, i.e. on the ability of the Taq DNA polymerase to discriminate the polymorphism and not the hybridisation of probes. Similar to Taqman, KASPar PCR plates are read on ABI Prism 7900 Sequence Detection System (Applied Biosystems) and output plot looks similar to TaqMan plot with three clusters of genotypes.

***SLC30A8* (rs13266634)** in patients and controls was genotyped by KASPar genotyping method.

Sequenom MassARRAY iPLEX platform (San Diego, CA, USA) – **Paper III and Paper IV**

Sequenom MassARRAY iPLEX platform is the leading technology for SNP Genotyping for sub-whole genome study applications. The MassARRAY® System is widely used for fine mapping and validation studies and for routine applications that employ fixed SNP panels. iPLEX assay is based on single-base primer extension (SBE) biochemistry with the sensitivity and accuracy of

Matrix-assisted laser desorption/ionization (MALDI)- time-of-flight (TOF) mass spectrometry (MS) detection (Sequenom, San Diego, CA, USA). Assays can be multiplexed up to 40 SNPs in one individual reaction allowing for throughput levels of up to 150,000 genotypes per instrument and day (277).

Genotyping for the novel T2D genes in middle-aged GAD negative (n=1,270) diabetic patients was performed using Sequenom MassARRAY platform (277), except for the *FTO* (rs9939609) gene which was genotyped by an allelic discrimination method on the Applied Biosystems 7900HT platform. Genotyping for *PPARG* (rs1801282), *KCNJ11* (rs5219), *CDKAL1* (rs7754840) and *CDKN2A/2B* (rs10811661) in the control subjects (n=11,923) was performed using the Sequenom MassARRAY platform.

Genotyping for the MODY genes- *HNF-4 α* (rs4810424, rs2144908 and rs212198), *GCK* (rs1799884), *HNF-1 α* (rs1169288) and *HNF-1 β* (rs757210 and rs4430796) in the rest of control subjects (n=6,128) was performed using the Sequenom MassARRAY platform. The rs2144908 failed genotyping by this platform and therefore we only had possibility to analyse data (n=5,795) obtained by the TaqMan allelic discrimination assay.

Average genotyping success rate was 98% among young, 96% among middle-aged diabetic patients and >95% for type 2 genes and >98% for MODY genes in control subjects. 3.2% of random samples for each SNP's were re-genotyped, with reproducibility of 99.9%. All SNPs were in Hardy –Weinberg equilibrium ($p>0.05$), apart from tree-allelic SNP rs757210 of the *HNF-1 β* gene.

10.4 Sequencing

Sequencing of *HNF-4 α* , *GCK*, *HNF-1 α* constructs were performed using Thermo Sequenase II dye terminator cycle sequencing premix kit with four fluorescence-labeled didoxynucleotides on an ABI PRISM 3730 Sequencer (Applied Biosystems, Foster City, CA, USA)

10.5 Statistical analysis

Continuous data are presented as median and 1st and 3rd quartile. Categorical variables were compared by two-tailed Fisher's exact test or chi-square (χ^2) test, with Bonferroni adjustment for multiple comparisons (the normal p value of 0.05 divided by the number of tests being performed). Odds ratios (OR) and 95% confidence intervals (CI) were calculated by use of the formula $a*d/b*c$, where a is the number of diabetic patients with one of the genotypes; b is the number of control subjects with the same genotype; c is the number of patients without this genotype; and d is the number of control subjects without the

corresponding genotype. The significance of differences in continuous variables between groups was assessed by nonparametric Mann-Whitney U test. Genotype association with plasma C-peptide was assessed by linear regression analysis, using log transformed C-peptide as a dependent variable. Genetic models were derived from <http://pngu.mgh.harvard.edu/~purcell/>. All statistical tests were performed by SPSS version 13.0 (SPSS, Chicago, IL, USA), JMP version 5 for MAC OS X (SAS Institute, Cary, NC, USA) and whole genome association analysis toolset PLINK (<http://pngu.mgh.harvard.edu/~purcell/plink/>). Linkage disequilibrium (LD) between two *TCF7L2* SNPs rs in paper II was analyzed using Haploview 4.0 and D' values were calculated (278).

In papers (II-IV) Hardy-Weinberg equilibrium was calculated in Microsoft excel sheet provided by Tufts University (Boston, USA). (www.tufts.edu/~mcourt01/Documents/Court%20lab%20-%20HW%20calculator.xls).

Power of the studies (II-IV) was calculated by using G•Power statistical power calculator (Version 2.1.2 for Macintosh) (http://www.psych.uni-duesseldorf.de/aap/projects/gpower/how_to_use_gpower.html) (130).

11. Results

11.1. Paper I: *HLA-DQB1* genotypes, islet antibodies and beta-cell function in young adult (15-34 years) diabetic patients

The aim of this study was to evaluate whether *HLA-DQB1* genotypes facilitate the classification of diabetes as compared with assessment of islet antibodies by investigating young adult diabetic patients.

There were 2,077 young adult patients (aged 15–34 years old) included over a 5-year period in the nationwide Diabetes Incidence Study in Sweden. Islet antibodies were measured at diagnosis in 1,869 patients, fasting plasma C-peptide after diagnosis in 1,522, while *HLA-DQB1* genotypes were determined in 1,743. Of the 2,077 incident diabetic patients, 2,018 were classified by the reporting physicians: 1,395 (69%) were given a diagnosis of clinical T1D, 366 (18%) of clinical type 2 diabetes and 257 (13%) could not be classified (unclassifiable diabetes) (Figure 10).

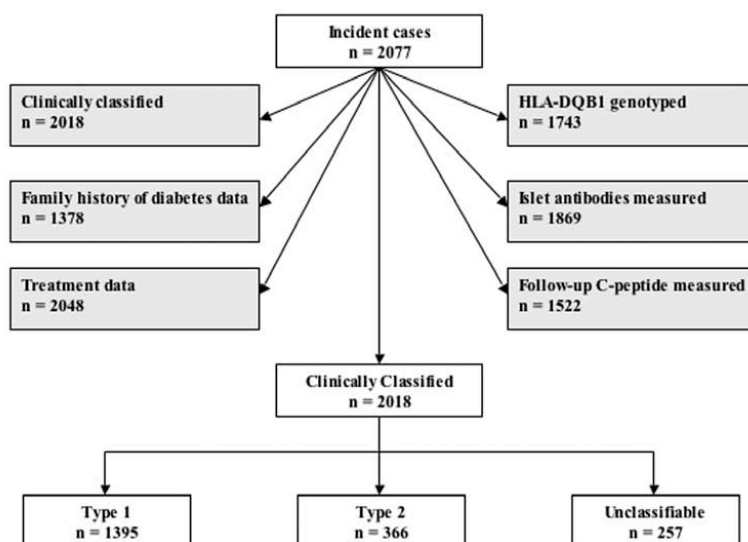


Figure 10. Flow chart of DISS patients recruited during the 5-year study period (1998–2002 inclusive).

There was a clear male preponderance among clinical T1D patients (ratio of

men:women=1.9) (**Table 3**). Patients with clinical T1D were younger (24 vs 30 and 28 years, $p<0.0001$) and had a lower BMI (22 vs 32 and 25, $p<0.0001$) than patients with clinical T2D or unclassifiable diabetes. A family history of diabetes was more frequent in clinical T2D (53%) than in clinical T1D (22%, $p<0.0001$) or unclassifiable (38%, $p=0.004$) diabetes (**Table 3**). Among all patients, 1,250 (67%) were positive for islet antibodies (Ab+). Islet antibodies were found in 83% of patients clinically considered to have T1D 23% with T2D and 45% with unclassifiable diabetes. After diagnosis, median fpC-peptide concentrations were markedly lower in patients with islet antibodies than in those without (0.24 vs 0.69 nmol/l, $p<0.0001$).

Table 3. Characteristics of 2018 patients in DISS (1998-2002).

	Incident cases (n= 2,077)	Type of diabetes			<i>p</i> -value
		Type 1 (n= 1,395)	Type 2 (n= 366)	Unclassifiable (n= 257)	
Male/Female ratio	1.6	1.9	1.3	1.0	< 0.0001
Age at onset (year)	26 (20, 30)	24 (19, 29)	30 (26, 32)	28 (24, 32)	< 0.0001
BMI (kg/m²)	23 (21, 27)	22 (20, 24)	32 (27, 37)	25 (22, 30)	< 0.0001
With family history of diabetes	407 (30)	211 (22)	130 (53)	66 (38)	< 0.0001
Insulin treatment:	1694 (83)	1339 (97)	142 (39)	169 (66)	< 0.0001
Patients with antibodies (Ab+)	1250 (67)	1056 (83)	79 (23)	113 (45)	< 0.0001
Follow-up P-C-peptide	0.31 (0.17; 0.59)	0.24 (0.14; 0.40)	0.74 (0.48; 1.14)	0.48 (0.26; 0.84)	< 0.0001

Data are presented as absolute numbers (%) or median, 25th and 75th percentile

Irrespective of clinical classification, patients with islet antibodies showed increased frequencies of at least one of the risk-associated *HLA-DQB1* genotypes compared with patients without (**Table 4**).

Table 4. Frequencies of *HLA-DQB1* genotypes among type 1, type 2, and unclassifiable Ab+ versus Ab- diabetic patients.

<i>HLA-DQB1</i> genotypes	Type of diabetes								
	Type 1			Type 2			Unclassifiable		
	Ab+ n (%)	Ab- n (%)	<i>p</i> -value	Ab+ n (%)	Ab- n (%)	<i>p</i> -value	Ab+ n (%)	Ab- n (%)	<i>p</i> -value
Risk:									
*02/*0302	271 (27)	20 (10)	<0.0001	16 (22)	15 (6.3)	0.0005	33 (31)	10 (8.2)	<0.0001
*0302/X	257 (26)	30 (15)	0.0018	19 (26)	29 (12)	0.009	29 (27)	14 (11)	0.0036
*0302/*0604	74 (7.4)	4 (2.0)	0.0039	3 (4.1)	3 (1.3)	NS	10 (9.4)	2 (1.6)	0.014
Non-risk:	398 (40)	142 (72)	<0.0001	36 (49)	190 (80)	<0.0001	35 (33)	96 (79)	<0.0001
Total	1000	196		74	237		107	122	

Data are presented as absolute numbers (%).

Antibody-negative patients with risk-associated *HLA-DQB1* genotypes had significantly lower median fpC-peptide concentrations than those without risk-associated genotypes (0.51 vs 0.74 nmol/l, $p=0.0003$) (**Figure 11**).

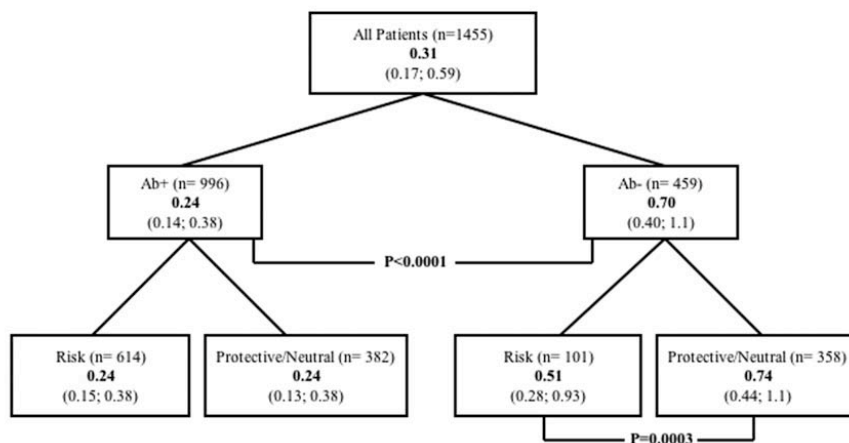


Figure 11. Levels of fpC-peptide measured at follow-up in relation to islet antibodies and *HLA-DQB1* genotypes.

Conclusions:

- 1) 67% of patients with newly diagnosed diabetes at the age of 15-34 years have T1D
- 2) Islet antibodies strongly contribute to the etiological classification of diabetes.
- 3) Islet antibodies are more closely associated with beta-cell impairment than risk *HLA-DQB1* genotypes.
- 4) Risk *HLA-DQB1* genotypes are associated with islet antibodies and do not add much to the classification of diabetes in Ab+ individuals.
- 5) Risk *HLA-DQB1* genotypes are, however, associated with low fpC-peptide concentrations in the absence of islet antibodies presumably identifying non-autoimmune T1D
- 6) Absence of islet antibodies and high fpC-peptide concentrations predict a T2D phenotype.

11.2. Paper II: *HLA-DQB1*, *INS* VNTR, *PTPN22* and *TCF7L2* in young (15-34 years) and middle-aged (40-59 years) diabetic patients

In this study we tested whether genetic markers associated with T1D or T2D could help to discriminate between autoimmune and non-autoimmune diabetes in young (15-34 years) and middle-aged (40-59 years) diabetic patients.

In 1,642 young and 1,619 middle-aged patients we determined *HLA-DQB1* genotypes, *PTPN22* and *INS* VNTR polymorphisms, polymorphisms in the *TCF7L2* gene, GAD and IA-2 antibodies and fasting plasma C-peptide.

As expected, young GADA-positive diabetic patients had higher frequency of risk *HLA-DQB1* (60 vs 25%; $p=9.4 \times 10^{-34}$), *PTPN22* CT/TT (34 vs 26%; $p=0.0023$), *INS* VNTR (class I/I) AA (69 vs 53%; $p=1.3 \times 10^{-8}$) and *INS* VNTR (class IIIA/IIIA) CC (75 vs 63%; $p=4.3 \times 10^{-6}$) genotypes than young GADA-negative patients. The frequency of T2D risk genotypes CT/TT of *TCF7L2* (rs7903146) was significantly increased in young GADA-negative (53 vs 43%; $p=0.0004$) compared with GADA-positive diabetic patients (**Table 5**).

Middle-aged GADA-positive patients also had a higher frequency of risk genotypes *HLA-DQB1* (45 vs 18%; $p=1.4 \times 10^{-16}$), *PTPN22* CT/TT (31 vs 23%; $p=0.034$), *INS* VNTR (class I/I) AA (69 vs 51%; $p=8.5 \times 10^{-5}$) and *INS* VNTR (class IIIA/IIIA) CC (73 vs 60%; $p=0.008$) genotypes than middle-aged GADA-negative patients. There was no difference in T2D-associated CT/TT genotypes of the *TCF7L2* gene between middle-aged GADA-positive and GADA-negative patients (**Table 5**), both of whom showed a significantly higher frequency than controls (55 vs 43%; $p=1.5 \times 10^{-9}$ and 24 vs 20%; $p=0.0007$).

Table 5. Prevalence of *HLA-DQB1*, *PTPN22*, *INS VNTR* and *TCF7L2* in young (15–34 years) and middle-aged (40–59 years) GADA-positive and GADA-negative diabetic patients.

Genotypes	Young (15-34 years)			Middle-aged (40-59 years)		
	GADA+	GADA-	<i>p</i> value	GADA+	GADA-	<i>p</i> value
<i>HLA-DQB1</i>						
Risk (*02/*0302, *0302/X, *0302/*604)	572 (60)	115 (25)	5.7x10 ⁻³³	78 (45)	208 (18)	8.3x10 ⁻¹⁶
Non-risk	387 (40)	341 (75)		94 (55)	965 (82)	
<i>PTPN22</i> (rs2476601)						
CC	631 (66)	344 (74)	0.014	86 (69)	908 (77)	0.2
CT+TT	324 (34)	120 (26)		39 (31)	267 (23)	
<i>INS VNTR</i> (rs689)						
AA (class I/I)	634 (69)	248 (53)	8x10 ⁻⁸	87 (69)	588 (51)	0.0005
AT+TT (class I/III+III/III)	295 (31)	216 (47)		39 (31)	573 (49)	
<i>INS VNTR</i> (rs3842755)						
CC (class IIIA/IIIA)	707 (75)	290 (63)	2.6x10 ⁻⁵	71 (73)	691 (60)	0.048
AC+AA (class IIIA/IIIB+IIIB/IIIB)	242 (25)	173 (37)		26 (27)	469 (40)	
<i>TCF7L2</i> (rs7903146)						
CC	538 (57)	217 (47)	0.0024	88 (44)	610 (45)	NS
CT+TT	407 (43)	246 (53)		109 (56)	733 (55)	

Data are presented as absolute numbers (%). Risk genotypes are highlighted.

Conclusions:

- 1) *TCF7L2* genotypes help to distinguish between autoimmune and non-autoimmune diabetes in young but not in middle-aged diabetic patients.
- 2) Genetically young and middle-aged Ab+ diabetic patients are similar with respect to increased prevalence of T1D risk genotypes.
- 3) Addition of *TCF7L2* to HLA genotyping in young adults improved the prediction of diabetic subtype.
- 4) It is likely that young GADA- diabetic patients do have true T2D.
- 5) If the age at onset for definition of LADA is lowered below 35 years, the LADA group will include an increasing number of patients with classical T1D.

11.3. Paper III: Novel T2D genes in young (15-34 years) and middle-aged (40-59 years) diabetic patients

In this study we evaluated whether common variants in novel T2D diabetes genes can discriminate between autoimmune and non-autoimmune diabetes in

young (15-34 years) and middle-aged (40-59 years) subjects. We genotyped following SNPs: *PPARG*, *KCNJ11*, *IGF2BP2*, *WFS1*, *CDKAL1*, *JAZF1*, *CDKN2A/2B*, *HHEX*, *SLC30A8* and *FTO*, measured GAD autoantibodies and C-peptide.

Altogether, 62% of the young and 13% of the middle-aged patients had GAD autoantibodies.

The frequency of common variants in the *PPARG* (OR=1.3, $P=0.02$), *IGF2BP2* (OR=1.1, $P=0.02$), *WFS1* (OR=1.1, $P=0.04$), *JAZF1* (OR=1.2, $P=0.018$) and *CDKN2A/2B* (OR=1.3, $P=0.013$) genes was increased in young GADA- patients compared with an elderly non-diabetic control group. Also young GADA-negative diabetic patients had higher frequency of the *JAZF1* AA (32% vs 23%; $P=0.02$) and *CDKN2A/2B* TT (74% vs 67%; $P=0.03$) genotypes than young GADA+ patients.

GADA- middle-aged showed the expected increased frequency of T2D diabetes associated risk alleles in the *PPARG* (OR=1.2, $P=0.008$), *IGF2BP2* (OR=1.2, $P=8.7 \times 10^{-7}$), *WFS1* (OR=1.2, $P=0.0003$), *CDKAL1* (OR=1.3, $P=2.6 \times 10^{-10}$), *JAZF1* (OR=1.2, $P=2.4 \times 10^{-6}$), *SLC30A8* (OR=1.2, $P=3.5 \times 10^{-6}$), *CDKN2A/2B* (OR=1.3, $P=6.5 \times 10^{-6}$), *KCNJ11* (OR=1.1, $P=0.0008$), and *FTO* (OR=1.3, $P=3.7 \times 10^{-8}$) genes compared with non-diabetic control subjects. The risk score indicating a high genetic risk of T2D (≥ 12 risk alleles) was associated with decreased fasting C-peptide concentrations (0.84 vs 0.97 nmol/l; $P=0.009$) in GADA- and an earlier age at onset (47 vs 51 years; $P=0.039$) in GADA+ (**Figure 12**) middle-aged patients.

Of individual genotypes, carriers of the T2D- associated risk C allele of *CDKAL1* (CC: 0.73 and CG: 0.87 vs GG: 0.97 nmol/l; $P=0.0002$) had lower C-peptide concentrations than G allele carriers.

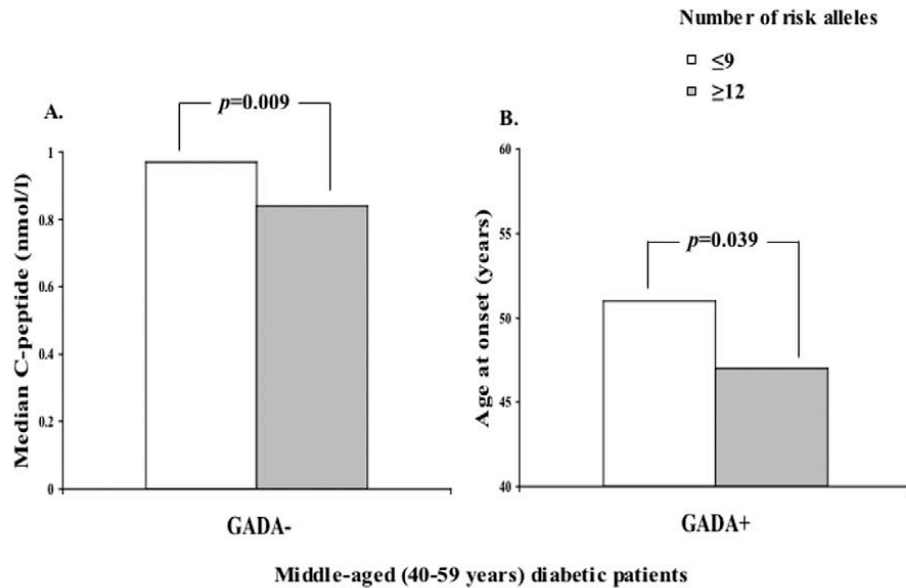


Figure 12. Fasting plasma C-peptide concentrations in GADA- (A) and age at onset of diabetes in GADA+ (B) middle-aged (40-59 years) GADA- diabetic patients.

In this study the frequency distribution of T2D diabetes associated risk alleles was quite similar to that of LADA, but different from non-diabetic controls and T1D patients, (**Figure 13**). These findings lend further support to the view that LADA patients share several genetic features with T2D. The study was, however, underpowered to detect a significant difference between middle-aged GADA+ patients and non-diabetic controls, e.g. the power to detect a difference in frequency for *CDKAL1* was only 37%.

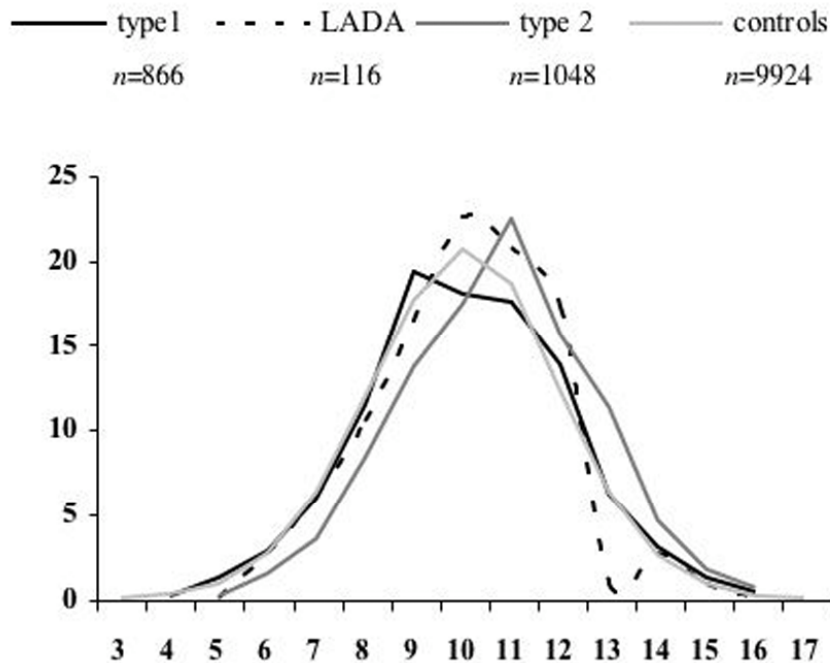


Figure 13. Frequency distributions of type 2 diabetes risk alleles in T1D, LADA, T2D patients and healthy controls.

Conclusions:

- 1) An increase of T2D risk variants in young GADA- diabetic patients suggests a resemblance with T2D
- 2) Middle-aged GADA- diabetic patients with a high genetic risk score (≥ 12 risk alleles) had reduced fasting C-peptide concentrations.
- 3) The risk variants in the *CDKALI* gene resulted in a step-wise decrease in fasting C-peptide concentrations in middle-aged GADA- patients and to some extent in the GADA+ patients.
- 4) Middle-aged GADA+ diabetic patients with a high genetic risk score (≥ 12 risk alleles) had earlier age at onset than those with a low risk score.
- 5) LADA patients share several genetic features with T2D.

11.4. Paper IV: Common variants and rare mutations in MODY genes in young (15-34 years) diabetic patients

In this study we evaluated whether common variants in MODY genes can discriminate between autoimmune and non-autoimmune diabetes and screened for MODY mutations in young adult (15-34 years) diabetic patients. We

genotyped the following SNPs in MODY genes: *HNF-4 α* , *GCK*, *HNF-1 α* and *HNF-1 β* in 1,642 young adult diabetic patients (15-34 years) with and without islet auto-antibodies. Eight patients with ≥ 3 family members with diabetes were sequenced for possible mutations in the *HNF-4 α* , *GCK* and *HNF-1 α* genes. Out of 1,642 young diabetic patients 1,138 (69%) had islet antibodies and 31% were antibody negative. No significant difference in frequency of common variants in *HNF-4 α* , *GCK*, *HNF-1 α* and *HNF-1 β* genes was seen between Ab+ and Ab- individuals nor between diabetic patients and non-diabetic controls (Table 6).

Table 6. Frequency of common variants in MODY genes in young (15-34 years at onset) Ab+ vs. Ab- diabetic patients.

Chr	Gene SNP	Genotypes	N Ab+/Ab-	Controls	Ab+	Ab-	p-value ^a Ab+ vs. Ab-
20	<i>HNF4-α</i> (MODY1) rs4810424	CC	1070/466	338 (3.0)	40 (3.7)	12 (2.6)	0.97
		CG		3135 (28)	284 (27)	134 (29)	
		GG		7702 (69)	746 (70)	320 (70)	
	rs2144908	AA	1051/464	138 (3.7)	43 (4.0)	14 (3.0)	0.86
		AG		1104 (29)	280 (27)	136 (29)	
		GG		2514 (67)	728 (69)	314 (68)	
	rs3212198	CC	1062/460	2014 (17)	180 (17)	87 (19)	0.31
		CT		5662 (48)	519 (49)	225 (49)	
		TT		4075 (35)	363 (34)	148 (32)	
7	<i>GCK</i> (MODY2) rs1799884	AA	1032/458	279 (2.5)	20 (1.9)	6 (1.3)	0.79
		AG		2872 (26)	261 (25)	125 (27)	
		GG		8013 (72)	751 (73)	327 (71)	
12	<i>HNF-1α</i> (MODY3) rs1169288	GG	1072/464	5183 (46)	493 (46)	190 (41)	0.19
		GT		4882 (44)	459 (43)	223 (48)	
		TT		1109 (9.9)	120 (11.0)	51 (11.0)	
17	<i>HNF-1β</i> (MODY5) rs757210	CC+G	1040/451	4549 (42)	446 (43)	186 (41)	0.11
		CT		4604 (43)	450 (43)	181 (40)	
		TT+G		1651 (15)	144 (14)	84 (19)	
	rs4430796	AA	1063/460	3426 (30)	349 (33)	137 (30)	0.023
		AG		5601 (49)	525 (49)	214 (46)	
		GG		2307 (20)	189 (18)	109 (24)	

Data are presented as absolute numbers (%). Risk genotypes are highlighted.

SNP rs1169288 in the MODY 3 gene refers to the common variant I27L which previously has been associated with increased risk of T2D (78, 279). Among Ab+ patients, carriers of T2D-associated T (L in I27L) allele of SNP rs1169288 in the *HNF1- α* gene had higher age at onset of diabetes (26 vs 24 years; $p=0.0006$, recessive model of inheritance) and more severe symptoms at diabetes onset such as weight reduction and/or polyuria (97% vs 92; $p=0.0008$, dominant model of inheritance) than G allele carriers (Figure 14).

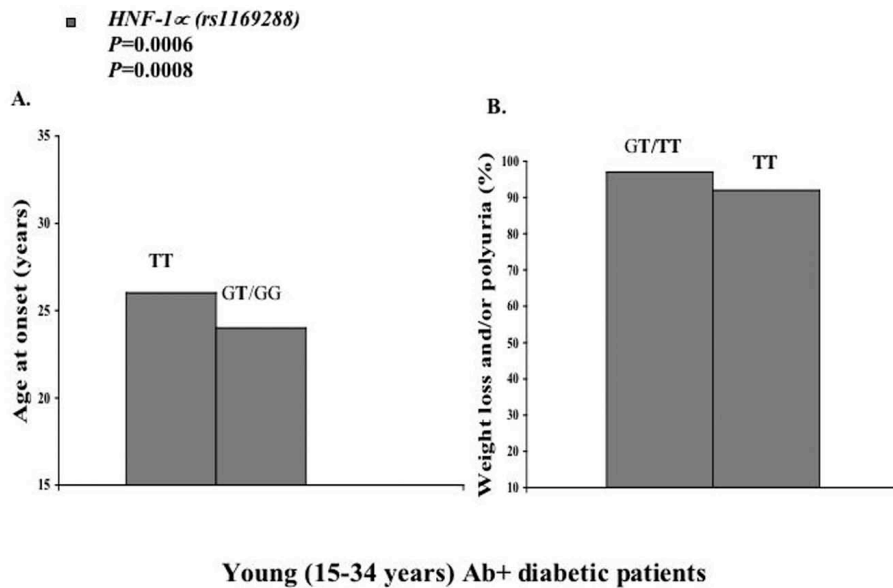


Figure 14. Age at onset (years) (A) and symptoms at onset (weight loss and/or polyuria) (B) in different genotype carries of the *HNF-1α* (rs1169288) gene in young adult Ab+ diabetic patients.

Among Ab- diabetic patients carriers of the T2D-associated G allele of the *HNF-1β* (rs4430796) gene (*TCF2*) had less severe diabetic symptoms (76% vs 86%; *p*=0.015, dominant model of inheritance) and less ketonuria (29% vs 46%; *p*=0.003, recessive model of inheritance) at diagnosis than A allele carriers (Figure 15).

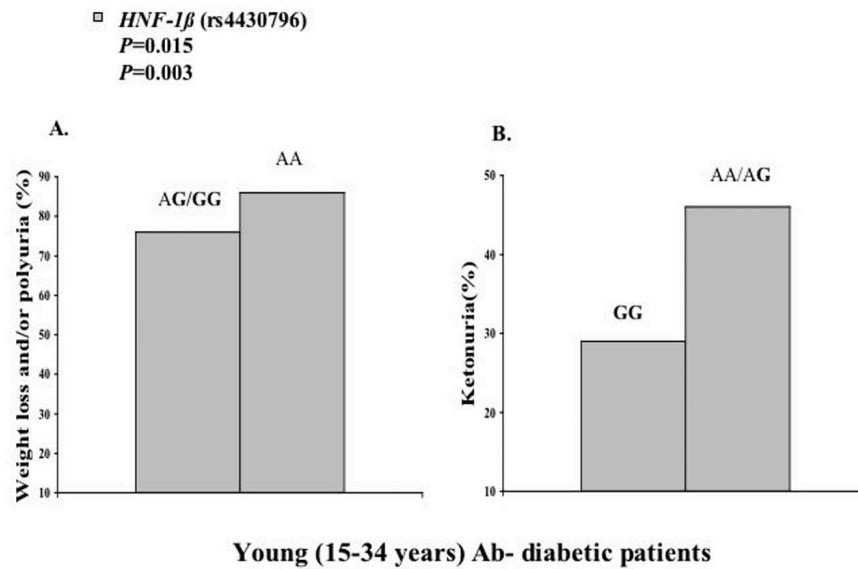


Figure 15. Weight loss and/or polyuria (A) and ketonuria (B) in different genotype carriers of the *HNF-1β* (rs4430796) gene in young adult Ab- diabetic patients.

Out of 355 diabetic patients without islet auto-antibodies 57% had no family history of diabetes, 34% had 1 family member, 6% had 2 family members and 3% had 3 or more family members with diabetes.

Out of 8 patients from pedigrees with at least 3 affected members, only one Ab-patient who was 26 years at diagnosis and treated with oral anti-diabetic drugs had a common frameshift mutation in exon 4 designated “Pro291fsinsC” in the *HNF-1α* (MODY 3) gene (**Figure 16**). It is the most common MODY 3 mutation described in a number of Swedish patients (65, 280, 281).

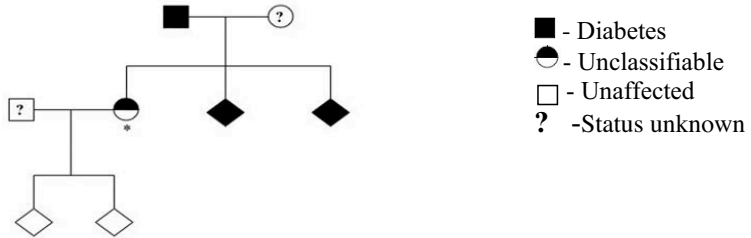


Figure 16. Pedigree figure with MODY 3 diabetic patient (marked by star). *Squares* represent males, *circles* females and *rhombus* an unknown gender.

12. Discussion

Although the ADA and WHO definitions provide criteria for the diagnosis of diabetes they provide little information on how to subclassify patients. In the clinic, most diabetic patients are classified as having either T1D or T2D but these classifications often more reflect our need to classify than follow hard criteria. Therefore a relatively large group of patients belong to the grey zone where clinical classification is more subjective than real. The age group between 15-34 years is becoming increasingly important with the ever younger onset of T2D. DISS is a unique study which can help to subclassify diabetic patients in this grey zone of diabetes. We have used a combination of markers (auto-antibodies, C-peptide, genetic markers) to classify these patients into subgroups. Including middle-aged patients also allowed us to distinguish between autoimmune diabetes in young and middle-aged (LADA) patients. The papers included in the thesis thus provide a first comprehensive attempt to classify diabetic patients across the age groups of 15-59 years into subgroups.

Strengths: The major strength of DISS is that we recruited a large cohort of incident diabetic patients aged 15-34 years from the whole country. Studies were large enough to detect effects of genotypes on clinical phenotypes with a power > 90%.

Weaknesses: 1) all statistical analyses were not corrected for multiple comparison (78) 2) Although we used different GADA assays in young and middle-aged diabetic patients, assay reruns showed correlation coefficient of 0.93 with $p < 0.0001$ between two methods suggesting that this would not significantly have influenced the results, 3) theoretically, if some middle-aged patients with low GADA titres were falsely labelled as GADA+ this could give an impression of similarity between middle-aged GADA+ and GADA- patients. This is an unlikely explanation, as by subdividing the middle-aged GADA+ patients by the median of the GADA titres, the results were virtually unchanged.

12.1 Study I

This study showed that 67% of young adult diabetic patients had autoimmune T1D if islet antibodies were used as an objective diagnosis of autoimmune T1D. If immeasurable or low fpC-peptide after diagnosis was included as a further objective criterion for clinical T1D, only another 70 patients without islet antibodies were added to the clinical T1D group. Hence, including patients with low or immeasurable fpC-peptide, the proportion of T1D would increase with only 4% leading to 71% with objective T1D among all incident young adults between 15 and 34 years of age. Among those classified as having T1D, 83% had objective T1D base on islet antibodies. Antibodies also are seen among 23% classified having T2D and 45% having unclassifiable diabetes, as previously

reported (282, 283). This emphasizes that classification should be based upon clear criteria as presence of islet antibodies rather than symptoms and clinical impressions. We observed that in the presence of islet antibodies, risk-associated *HLA-DQB1* genotypes do not contribute to the classification of T1D per se, as seen also previously (284-286). Indeed, in line with the Belgian Diabetes Registry (141), the only suggestion that risk *HLA-DQB1* genotypes may contribute to an etiological classification of diabetes was among Ab- diabetic patients. The explanation for this finding could be that islet antibodies not detected by the current assays may be present in Ab- diabetic patients with risk-associated *HLA-DQB1* genotypes and low fpC-peptide. Later development of antibodies or disappearance of previous antibodies should also be considered. It can be argued that we did not determine *HLA-DQA1* genotypes in our patients. However, the linkage disequilibrium between alpha and beta chain alleles is very strong. Additional information obtained by typing for *HLA-DQA1* would thus be of limited added value (270). Furthermore, our association study of *HLA-DQB1* loci may be considered as a cost-effective way of assessing the role of HLA in the classification of diabetes in individuals aged 15-34 years.

12.2 Study II

In this study, we provide a comprehensive genetic and clinical characterisation of antibody-positive and -negative diabetes across the age groups 15 to 59 years. The key finding of our study was that *TCF7L2* CT/TT genotypes helped distinguish between young GADA-positive and GADA-negative patients (age 15-34 years) but not between middle-aged (40-59 years) GADA-positive and GADA-negative diabetic patients. These findings may have important implications for diagnosis of diabetic subgroups. Consistent with previous reports (142, 228, 230), genetically, young and middle-aged antibody-positive patients were similar with respect to increased prevalence of risk genotypes *HLA-DQB1*, *PTPN22* CT+TT, *INS* VNTR class I/I and *INS* VNTR class IIIA/IIIA. Although *HLA* genotyping together with measurements of islet antibodies has been used to identify individuals at risk of T1D, no genetic markers for T2D have been available until the identification of the strong association between common variants in the *TCF7L2* gene with T2D. Therefore, addition of *TCF7L2* to *HLA* genotyping in young adults could clearly help to improve the prediction of diabetic subtype. When we subdivided the young adult patients into two age groups (15-25 and 25-34 years), we observed a stronger discriminatory effect of variants in the *TCF7L2* gene in the older than in the younger group.

Our failure to find a difference in the frequency of the T2D-associated T allele of rs7903416 in the *TCF7L2* gene between middle-aged GADA-positive and GADA-negative patients, while finding a significantly higher frequency than in young GADA-positive patients, indicates that autoimmune diabetes in the

middle-aged is different from autoimmune diabetes in young adults. These findings complement and add to our previous paper (231) showing that frequency of the *TCF7L2* variant markedly differs between young and middle-aged autoimmune diabetes, further supporting the view that LADA represents an admixture of T1D and T2D. It also shows that if age at onset for definition of LADA is lowered below 35 years, the LADA group will include an increasing number of patients with classical T1D.

12.3 Study III

The novel findings of this study was 1) an increase of T2D risk variants (*JAZF1* and *CDKN2A/2B*) in young GADA- diabetic patients suggesting resemblance with T2D and 2) a modifying effect of T2D –associated genotypes on C-peptide in GADA- and age-at-onset in GADA+ middle-aged patients.

An “accelerator” hypothesis has been put forward by which a genetic background of T2D would result in earlier onset of autoimmune diabetes by imposing an earlier stress on beta-cells by the insulin resistance characteristic of T2D (287). Our data indeed support the view that T2D associated genes influence the phenotype in patients with autoimmune diabetes but that the acceleration of diabetes onset and beta-cell deterioration is only seen in middle-aged but not in young patients. Also, the data rather suggest that further impairment in beta-cell function rather than in insulin action is the accelerator culprit. Although the mechanism by which the new T2D associated risk genotypes impair beta-cell function is not fully understood, one common hypothesis is that most of them would impair proliferation of beta-cells. Also, risk variants in the *CDKALI* gene resulted in a step-wise decrease in fasting C-peptide concentrations in middle-aged GADA- patients and to some extent in the GADA+ patients.

12.4 Study IV

Novel findings in the present study were that 1) Ab+ patients, T2D-associated T allele carriers in the *HNF-1 α* (rs1169288) presented with more severe diabetic symptoms than G allele carriers 2) Ab+ patients, the same T allele was associated with a delayed onset of the disease 3) Ab- patients, T2D-associated G allele carriers in the *HNF-1 β* (TCF2: rs4430796) gene presented with less severe diabetic symptoms and ketonuria than A allele carriers.

Mutations in the *HNF-1 α* gene cause decreased renal threshold for glucose reabsorption and correspondingly glucosuria (288, 289), increased level of liver enzymes (290), reduced pancreatic volume (291) and could modify the age at onset of diabetes (292). It has been shown previously that functional variant in the *HNF-1 α* gene (I27L) was associated with an increased risk of T2D

independent of sex, age at onset and BMI, with an effect size similar to the novel T2D genes, influence transcriptional activity and insulin secretion in vivo (78, 279).

We do not know whether polyuria in the Ab⁺ patients with the T allele of rs1169288 reflects a reduced renal threshold or simply is a reflection of a more severe disease. It has been shown that the *HNF-1 α* knockout mouse has a severe renal Fanconi syndrome with polyuria and glucosuria, caused by renal proximal tubule dysfunction. This defects in glucose reabsorption is caused by significant reduction in expression of high capacity/low affinity sodium-glucose transporter-2 (SGLT-2) (293, 294).

In patients with MODY 3, age at onset differs with location of the mutation in the gene. Patients with mutations that affected exons 8-10 in the *HNF-1 α* gene were diagnosed later than patients with mutations in exons 1–6 (295). The SNP I27L (rs1169288) is located in the exon 1 region of the *HNF-1 α* gene. It has previously been shown that a family history of T2D influences the phenotype of patients with T1D and vice versa (296-298). With the notion that this polymorphism (I27L) in the *HNF-1 α* gene is associated with increased risk of T2D, the effect on age at onset in the Ab⁺ patients could reflect co-inheritance of T2D genes or a shared family history of T2D.

It has been shown that MODY 5 patients carrying mutations in the *HNF-1 β* gene can show similar clinical symptoms and signs as patients with T1D and insulin dependency (299, 300). Our finding of less severe diabetic symptoms in carriers of the T2D-associated G allele of *HNF-1 β* gene in Ab⁻ patients might indicate that they share more of a T2D genetic background and phenotype.

Taken together, the data from these studies suggest that diabetes represents a continuum where T1D and T2D make up the extremes (**Figure 17**). In the grey zone between these two forms of diabetes we find LADA which shares genetic features with both T1D and T2D and should be considered as an admixture of the two rather than as a subgroup of T1D. The data also convincingly show that co-sharing other genes between subgroups can influence the clinical phenotype. This is though only the beginning, with more refined methods we can hope that classification of diabetes can be more precise and possibly one day be used for predicting course of the disease and response to treatment, i.e. a step towards personalized medicine.

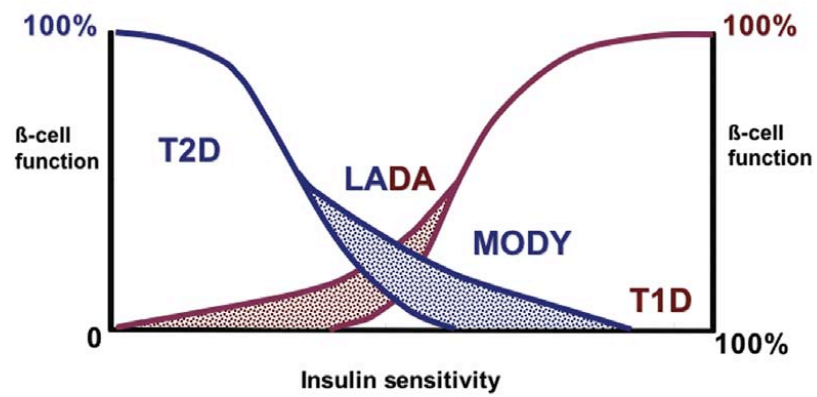


Figure 17. Diabetes is a continuum where the relative contribution of impaired beta-cell function and insulin sensitivity differs between different subgroups.

Conclusions

Study I: Presence of islet auto-antibodies is more important than C-peptide or T1D risk-associated *HLA-DQB1* genotypes in the classification of diabetes among young adults (15-34 years old)

Study II: Genetically, Latent Autoimmune Diabetes in Adults (LADA) is an admixture of both type 1 and type 2 diabetes, sharing *HLA-DQB1* risk genotypes with type 1 and *TCF7L2* risk variants with type 2 diabetes.

Study III: Type 2 diabetes associated risk genotypes modify the disease phenotype (age at onset and C-peptide) in middle-aged but not in young diabetic patients.

Study IV: Common variants in MODY genes do not discriminate between young patients with autoimmune and non-autoimmune diabetes but they do influence onset and presentation of the disease.

Populärvetenskaplig sammanfattning

Diabetes kännetecknas av förhöjda halter av glukos i blodet och flera vanliga former förekommer. Typ 1 (T1D) diabetes är vanligast förekommande hos barn och ungdomar och karakteriseras av att de insulin producerande cellerna (s.k. betacellerna) förstörs av kroppens eget immunförsvar, en autoimmun reaktion. Patienter med T1D diabetes kräver insulin för överlevnad och har ofta riskgenotyper så som *HLA-DQB1*, *INS VNTR*, *PTPN22*. Hos vuxna beskrivs samma situation som Latent Autoimmune Diabetes in Adults (LADA) med en diagnos efter 35-års ålder och utan insulinbehandling de första sex månaderna. Typ 2 diabetes (T2D) karakteriseras av minskad insulinsekretion och nedsatt insulinverkan tillsammans med ökad produktion av glukos från levern och onormal fettmetabolism. Miljöfaktorer som ökar insulinresistens är pubertet, graviditet, viktuppgång (framför allt central fetma, s.k. "äpple form") och fysisk inaktivitet. T2D diagnosticeras vanligen efter 40-års ålder, i vissa fall efter att patienten utvecklat kärl och neurala komplikationer. *TCF7L2* genen associerar starkt med typ 2 diabetes. Maturity-onset diabetes of the young (MODY) är en monogen form av diabetes som nedärvs dominant (dvs. patienten har en muterad och en normal variant av på de två kromosomerna) och karakteriseras av diabetes utan förekomst av ketoner, sjukdomsdebut innan 25-års ålder och orsakas av en störning i betacellsfunktionen. Hittills har mutationer i sex gener visat sig orsaka MODY, *HNF-4 α* (MODY 1), glucokinas (*GCK*) (MODY 2), *HNF-1 α* (MODY 3), *IPF1* (MODY 4), *HNF-1 β* , (MODY 5) och *NeuroD1* (MODY 6).

Målet med denna avhandling var att undersöka genetiska skillnader mellan autoimmun (typ 1 diabetes och LADA) och icke-autoimmun (typ 2 diabetes och MODY) diabetes i unga (15-34 år) och medelålders (40-59 år) diabetiker från Sverige för att förbättra framtidens diagnoser och behandling.

I första studien undersökte vi huruvida *HLA-DQB1* genotyper kunde förbättra klassificering av diabetes jämfört med antikroppar mot insulinproducerande celler i unga (15-34 år) diabetespatienter. Antikroppar (ICA, IA-2A eller GADA) mot insulinproducerande celler upptäcktes hos 83% av patienter som kliniskt karakteriserades som T1D, hos 23% av patienter med T2D och hos 45% av patienter vars diabetes inte kunde klassificeras enligt kliniska symptom. Hos patienter med antikroppar var C-peptidnivåerna, ett mått av betacellsfunktion, lägre vid diagnosen än hos patienter utan antikroppar. Oberoende av klinisk klassificering hade patienter med antikroppar högre frekvens av *HLA-DQB1* risk genotyper än patienter utan antikroppar. Patienter utan antikroppar och bärare av *HLA-DQB1* risk genotyper hade lägre C-peptidnivåer än de som inte hade risk genotyper av *HLA-DQB1*. Från dessa resultat drog vi slutsatsen att antikroppsmätningar är nödvändiga för att klassificera patienter med diabetes. Genotypning av *HLA-DQB1* bidrar inte till bättre klassificering hos patienter

med antikroppar. I patienter utan autoantikroppar kan genotypning av *HLA-DQB1* tillsammans med mätning av C-peptidnivåer bidra till bättre urskiljning mellan T1D och T2D.

I studie II undersökte vi om genetiska markörer associerade med T1D (*HLA-DQB1*, *INS VNTR* and *PTPN22*) och T2D (*TCF7L2*) kunde hjälpa till att skilja mellan autoimmun och icke-autoimmun diabetes hos unga (15-34 år) och medelålders (40-59 år) diabetiker. Frekvensen av riskgenotyper av *HLA-DQB1*, *PTPN22* CT/TT, *INS VNTR* klass I/I och *INS VNTR* klass IIIA/IIIA var högre hos både unga och medelålders individer med GADA antikroppar jämfört med individer utan GADA antikroppar. T2D riskgenotypen (CT/TT) i *TCF7L2* var vanligare hos unga individer utan GADA antikroppar jämfört med individer med GADA antikroppar. Hos medelålders individer var frekvensen av CT/TT genotyper förhöjt hos både individer med och utan GADA antikroppar. Av dessa resultat kunde vi dra slutsatsen att variationen i *TCF7L2* kunde skilja mellan unga men inte medelålders patienter med och utan GADA antikroppar. Detta tyder på att unga patienter utan GADA antikroppar har T2D och att medelålders patienter med GADA antikroppar (LADA) skiljer sig från unga patienter med GADA antikroppar (T1D) och delar delvis genetisk bakgrund med T2D.

I studie III genotypades tio nya varianter associerade med T2D i unga och medelålders diabetiker för att undersöka om dessa varianter kunde påverka den kliniska klassificeringen. Unga patienter utan GADA antikroppar hade en ökad frekvens av *PPARG*, *IGF2BP2*, *WFS1*, *JAZF1* och *CDKN2A/2B* riskgenotyper jämfört med en äldre kontrollgrupp med individer utan diabetes. Risk varianten i *JAZF1* och *CDKN2A/2B* var också vanligare hos unga patienter utan GADA antikroppar än hos unga med GADA antikroppar. Som förväntat hade medelålders patienter utan GADA antikroppar högre frekvens av riskgenotyper i *PPARG*, *IGF2BP2*, *WFS1*, *CDKAL1*, *JAZF1*, *SLC30A8*, *CDKN2A/2B*, *KCNJ11* och *FTO* gener jämfört med individer utan diabetes och ingen signifikant skillnad kunde observeras mellan medelålders patienter med och utan GADA antikroppar. Medelålders patienter utan GADA antikroppar med 12 eller fler riskalleler hade lägre C-peptid nivåer jämfört med individer med nio eller färre riskalleler. Individer med GADA antikroppar med fler riskalleler hade också tidigare sjukdomsdebut än individer med färre riskalleler. Detta tyder på att T2D associerade riskgenotyper påverkar sjukdomsbilden i medelålders men inte unga diabetes patienter.

I studie IV undersökte vi om vanliga varianter i MODY gener kunde urskilja mellan autoimmun och icke-autoimmun diabetes hos unga diabetiker. Vi letade efter mutationer i de vanligast förekommande MODY gener (*HNF-4 α* , *GCK* och *HNF-1 α*) hos individer utan autoantikroppar med tre eller fler familjemedlemmar med diabetes. Ingen skillnad i frekvens mellan individer med

eller utan antikroppar observerades bland de undersökta MODY generna. Individer med autoantikroppar som bar på den T2D associerade T-allelen i *HNF-1 α* genen hade senare sjukdomsdebut och en svårare sjukdomsbild med viktnedgång och polyuri än de individer som saknade allelen. Hos individer utan antikroppar hade bärare av den T2D associerade G-allelen i *HNF-1 β* genen mindre ofta problem med viktnedgång, polyuri och ketonuri än individer utan allelen. Bland patienter med flera familjemedlemmar med diabetes kunde vi identifiera en individ med en MODY mutation i exon fyra i *HNF-1 α* genen. Våra resultat tyder på att vanliga varianter i MODY gener inte kan urskilja mellan autoimmun och icke-autoimmun diabetes hos unga individer, däremot kan de påverka åldern vid insjuknande och sjukdomsbilden.

Våra studier visar att genetiska markörer tydligt förbättrar klassificeringen av diabetes och tillsammans med antikroppar mot insulinproducerande celler kan hjälpa vid diagnosen och behandlingen av olika diabetesgrupper.

Georgian Summary (კვლევის მოკლე შინაარსი)

ტიპი 1 დიაბეტი ყველაზე ხშირია ბავშვებში და ახალგაზრდებში. იგი ხასიათდება პანკრეასის ინსულინის მწარმოებელი ბეტა უჯრედების აუტოიმუნური დესტრუქციით, გენეტიკური რისკ-ფაქტორების (*HLA-DQB1*, *INS VNTR*, *PTPN22*) არსებობით, და ინსულინის საჭიროებით სიცოცხლის შესანარჩუნებლად. ზრდასრულ ადამიანებში იგივე მდგომარეობას ხშირად უწოდებენ ლატენტურ ავტოიმუნური დიაბეტს ზრდასრულებში (*LADA*). იგი ვლინდება 35 წლის შემდეგ და არ საჭიროებს ინსულინს დიაგნოსტირებიდან მინიმუმ 6 თვის განმავლობაში. ტიპი 2 დიაბეტი ხასიათდება ინსულინის სეკრეციის დარღვევით და ინსულინის მიმართ რეზისტობით, რასთან ერთადაც აღინიშნება ღვიძლის მიერ გლუკოზის ჭარბწარმოება და ცხიმების მეტაბოლიზმის მოშლა. ინსულინის მიმართ რეზისტენტობის გამომწვევი გარემო ფაქტორებია გარდატეხის ასაკი, ორსულობა, წონის მომატება (ცენტრალური სიმსუქნე, ანუ „ვაშლის ტიპი“) და უმოძრაო ცხოვრების წესი. ჩვეულებრივ, ტიპი 2 დიაბეტი დიაგნოსტირება ხდება 45 წლის ასაკის შემდეგ და ზოგიერთ შემთხვევაში ის დიაგნოსტირდება მაშინ, როდესაც პაციენტს უვითარდება სისხლძარღვოვანი და ნეიროპათიური გართულებები. *TCF7L2* წარმოადგენს მე-2 ტიპის დიაბეტთან ყველაზე მჭიდროდ დაკავშირებულ გენს. ახალგაზრდებში გარედატეხის ასაკში დაწყებული დიაბეტი (*MODY*) წარმოადგენს დიაბეტის მონოგენურ ფორმას, რომელიც გადაეცემა ავტოსომურ დომინანტური მემკვიდრეობით (პიროვნებას გააჩნია ერთი მუტაციური გენის ასლი და ერთი ნორმალური გენი ავტოსომური ქრომოსომის წყვილში). იგი ხასიათდება არაკეტონური დიაბეტით, ვლინდება 25 წლამდე და პირველადი დეფექტი ბეტა-უჯრედების ფუნქციაშია. დღევანდელ დღემდე *MODY*-ს სხვადასხვა ფორმების მიზეზად გამოვლენილ იქნა ექვსი გენის მუტაცია, ესენია *HNF-4α* (*MODY 1*), *GCK* (*MODY 2*), *HNF-1α* (*MODY 3*), *IPF1* (*MODY 4*), *HNF-1β*, ადრე ცნობილი, როგორც *TCF2* (*MODY 5*) და *ნეიროD1* (*MODY 6*).

ამ ნაშრომის მიზანი იყო დიაბეტის მქონე ახალგაზრდა (15-34 წ.) და შუა ხნის (40-59 წ.) შვედ პაციენტებში ავტოიმუნური (ტიპი 1 და *LADA*) და არა-ავტოიმუნური (ტიპი 2 და *MODY*) დიაბეტის დიფერენცირება გენეტიკური მარკერების გამოყენებით, მომავალში დაავადების სწორი დიაგნოსტირებისა და მკურნალობისათვის.

ამ ამოცანის შესასრულებლად შევარჩიეთ 1642 ახალგაზრდა (15-34 წლის) დიაბეტიანი პაციენტი შვედეთში დიაბეტის შემთხვევიანობის რეესტრიდან (*DISS*) და 1619 შუა ხნის (40-59 წლის) დიაბეტიანი პაციენტი სამხრეთ შვედეთის დიაბეტის რეესტრიდან. განვსაზღვრეთ გენეტიკური მარკერები: *HLA-DQB1* (კვლევა I და II), *PTPN22*, *Ins VNTR*, *TCF7L2* (კვლევა II), *PPARG*, *KCNJ11*, *IGF2BP2*, *WFS1*, *CDKALI*, *JAZF1*, *CDKN2A/2B*, *HHEX*, *SLC30A8* და *FTO* (კვლევა III) და *MODY* გენები – *HNF-4α*, *GCK*, *HNF-1α* და *HNF-1β* (კვლევა IV), განვსაზღვრეთ პანკრეასის მიმართ არსებული ანტისხეულები (*ICA*, *IA-2A* და *GADA*) და გავზომეთ C-პეპტიდი (ბეტა-უჯრედების ფუნქციის მარკერი, იხმარება ინსულინის გაზომვის მაგივრად).

კვლევა I შევაფასეთ, აიოლებენ თუ არა *HLA-DQB1* გენოტიპები დიაბეტის კლასიფიკაციას პანკრეასის მიმართ არსებულ ანტისხეულებთან შედარებით ახალგაზრდა (15-34 წლის) დიაბეტიანი პაციენტებში. პანკრეასის მიმართ

არსებულ ანტისხეულები აღმოჩენილ იქნა კლინიკურად დიაგნოსტიკურ ტიპი 1 დიაბეტის მქონეთა 83%-ში, ტიპი 2 დიაბეტის მქონეთა 23%-ში და არაკლასიფიცირებული დიაბეტის მქონეთა 45%-ში. უზმოზე გაზომილი C-პეპტიდის კონცენტრაცია დიაგნოსტიკის შემდეგ მკვეთრად დაბალი იყო ანტისხეულების მქონე პაციენტებში, ვიდრე პაციენტებში მათ გარეშე. კლინიკური კლასიფიკაციის და მიუხედავად, ანტისხეულების მქონე პაციენტებმა უჩვენეს სარისკო *HLA-DQB1* გენოტიპებიდან მინიმუმ ერთ-ერთის მომატებული სიხშირე. ანტისხეულების არმქონე, *HLA-DQB1* გენოტიპების მქონე პაციენტებში მნიშვნელოვნად უფრო მცირე იყო უზმოზე გაზომილი C-პეპტიდის კონცენტრაცია, ვიდრე მათში, ვისაც არ ჰქონდა სარისკო გენოტიპი. ჩვენ დავასკვნით, რომ ანტისხეულების არსებობის დადგენა საჭიროა დიაბეტის მქონე პაციენტების ეტიოლოგიური კლასიფიკაციისათვის. *HLA-DQB1* გენოტიპირება არ აუმჯობესებს კლასიფიკაციას ანტისხეულების მქონე პაციენტებში. თუმცა, ანტისხეულების არმქონე პაციენტებში *HLA-DQB1* გენოტიპირება C-პეპტიდის დონის განსაზღვრასთან ერთად შესაძლოა ღირებული იყოს იდიოპათური ტიპი 1 დიაბეტის ფორმის ტიპი 2 ფორმისაგან დიფერენცირებისთვის.

კვლევა II შევაფასეთ, გვეხმარება თუ არა ტიპი 1 (*HLA-DQB1*, *INS VNTR* და *PTPN22*) და ტიპი 2 (*TCF7L2*) დიაბეტთან დაკავშირებული გენეტიკური მარკერები ავტოიმუნურ და არა-ავტოიმუნურ დიაბეტს შორის დიფერენცირებაში, ახალგაზრდა (15-34 წლის) და შუა ხნის (40-59 წლის) დიაბეტთან პაციენტებში. ტიპი 1 დიაბეტის რისკ-გენოტიპების, *HLA-DQB1*, *PTPN22* CT/TT, *INS VNTR* კლასი I/I და *INS VNTR* კლასი IIIA/IIIA სიხშირე მომატებული იყო ახალგაზრდა და შუა ხნის GADA+ პაციენტებში, GADA- პაციენტებთან შედარებით. ტიპი 2 დიაბეტთან დაკავშირებული გენოტიპები, *TCF7L2* CT/TT მნიშვნელოვნად უფრო ხშირი იყო ახალგაზრდა GADA- პაციენტებში, ვიდრე GADA+ პაციენტებში. ამგვარი განსხვავება არ აღინიშნებოდა შუა ხნის პაციენტებში, რომლებშიც *TCF7L2*-ის CT/TT გენოტიპების სიხშირე ერთნაირად მომატებული იყო GADA- და GADA+ ჯგუფებში. ჩვენ დავასკვნით, რომ *TCF7L2* გენის ვარიანტები გვეხმარება დიფერენცირებაში ახალგაზრდა, მაგრამ არა შუა ხნის GADA+ და GADA- დიაბეტთან პაციენტებში, იმ მოსაზრებით, რომ ახალგაზრდა GADA- პაციენტებს აქვთ ტიპი 2 დიაბეტი და რომ შუა ხნის GADA+ პაციენტები (LADA) განსხვავდებიან თავიანთი ახალგაზრდა GADA-დადებითი (ტიპი 1 დიაბეტი) ანალოგებისაგან და ატარებენ ტიპი 2 დიაბეტის თვისებებს.

კვლევა III მოვახდინეთ მე-2 ტიპის დიაბეტთან დაკავშირებული 10 ახალი რისკ-მარკერის გენოტიპირება ახალგაზრდა (15-34 წლის) და შუა ხნის (40-59 წლის) GADA+ და GADA- დიაბეტთან პაციენტებში და შევაფასეთ, თუ როგორ ცვლიან ისინი კლინიკურ ფენოტიპს. ახალგაზრდა GADA- პაციენტებში მომატებული იყო *PPRG*, *IGF2BP2*, *WFS1*, *JAZF1* და *CDKN2A/2B* გენების რისკ-ვარიანტები ხანდაზმულ არა-დიაბეტთან კონტროლებთან შედარებით. ასევე, რისკ-ვარიანტები, *JAZF1* AA და *CDKN2A/2B* TT უფრო ხშირი იყო GADA-, ვიდრე GADA+ ახალგაზრდა დიაბეტთან პაციენტებში. როგორც მოსალოდნელი იყო, შუა ხნის GADA- პაციენტებში პრევალირებდა იყო *PPRG*, *IGF2BP2*, *WFS1*, *CDKAL1*, *JAZF1*, *SLC30A8*, *CDKN2A/2B*, *KCNJ11* და *FTO* გენების რისკ-ვარიანტები არადიაბეტთან კონტროლებთან შედარებით და

უმნიშვნელო განსხვავებით GADA+ პაციენტებისაგან. შუა ხნის GADA-დიაბეტთან პაციენტებს მეტი რისკ-აღლეით (≥ 12) უფრო შემცირებული ჰქონდათ C-პეპტიდის კონცენტრაცია, ვიდრე ნაკლები რისკ-აღელის (≤ 9) მქონე პაციენტებს. ასევე, უფრო მეტი რისკ-აღელის მქონე GADA+ პაციენტებში აღინიშნებოდა დაავადების უფრო ადრეულ ასაკში დაწყება, ვიდრე GADA- პაციენტებში ნაკლები რისკ-აღლეით. ტიპი 2 დიაბეტთან დაკავშირებული რისკ-აღლეების განაწილება საკმაოდ ერთგვაროვანია შუა ხნის პაციენტებში, GADA-ს არსებობის და მიუხედავად. ტიპი 2 დიაბეტთან დაკავშირებული რისკ-გენოტიპები ცვლიან დაავადების ფენოტიპს (დაავადების დაწყების ასაკს და C-პეპტიდს) შუა ხნის, მაგრამ არა ახალგაზრდა დიაბეტთან პაციენტებში.

კვლევა IV შეეფასეთ, შეიძლება თუ არა MODY გენების ვარიანტურებით განვასხვავოთ ავტოიმუნური და არა-ავტოიმუნური დიაბეტი ახალგაზრდა დიაბეტთან პაციენტებში და მოვახდინოთ *HNF-4 α* , *GCK* და *HNF-1 α* მუტაციებზე სკრინინგი ანტისხეულების არმქონე იმ პაციენტებში, ვის ოჯახშიც იყო დიაბეტით დაავადებული ≥ 3 წევრი. არ აღინიშნა მნიშვნელოვანი განსხვავება MODY გენების რისკ-ვარიანტების სიხშირეში Ab+ (ანტისხეულებიან) და Ab- (ანტისხეულების გარეშე) ადამიანებში. Ab+ დიაბეტთან, *HNF-1 α* გენის ტიპი 2 დიაბეტთან-დაკავშირებული T აღელის მტარებელ პაციენტებში უფრო მაღალი იყო დიაბეტის დაწყების ასაკი, მაგრამ უფრო მძიმე იყო დიაბეტის სიმპტომები (წონაში დაკლება და/ან პოლიურია), ვიდრე G აღელის მტარებლებში. და ბოლოს, Ab- დიაბეტთან, *HNF-1 β* გენის ტიპი 2 დიაბეტთან-დაკავშირებული G აღელის მტარებელ პაციენტებში უფრო იშვიათი იყო წონაში დაკლება და/ან პოლიურია და კეტონურია დიაგნოსტიკის მომენტში, ვიდრე A აღელის მტარებლებში. ერთ პაციენტს ჰქონდა “Pro291fsinsC” აღნიშნული ექსონი 4-ის frameshift მუტაცია *HNF-1 α* გენში. MODY გენების ვარიანტურობა ვერ განასხვავებს ახალგაზრდა პაციენტებს ავტოიმუნური და არა-ავტოიმუნური დიაბეტით, მაგრამ ისინი ახდენენ ზეგავლენას დაავადების დაწყებასა და გამოვლინებაზე. ჩვენმა კვლევებმა უჩვენეს, რომ გენეტიკური მარკერები აშკარად აუმჯობესებენ დიაბეტის კლასიფიკაციას და პანკრეასის მიმართ არსებულ ანტისხეულებთან ერთად, სრულყოფენ დიაბეტის სხვადასხვა ტიპების დიაგნოსტიკასა და მკურნალობას.

Acknowledgement

Here I would like to thank and express my sincere appreciation to people who greatly contributed to this work:

My first supervisor, **Göran Sundkvist**, for your endless efforts to guide me in the field of diabetes when I was in the very beginning of my studies. Thanks for kindness, devotion, support, understanding and help. I am very grateful to have known you. I would also like to thank your very nice family: Kersti, Nanna and Peter for the support.

My forever supervisor, **Leif Groop**, who completely changed my life when gave me a chance to come and join his brilliant group in Sweden. You are the best tutor I could ever wish for. Without you, I would have been lost in the difficult field of diabetes research. Thank you Leif for guiding, inspiring, sharing the deep knowledge and making me what I am in science today.

My co-supervisor and best friend **Valeriya Lyssenko**. Where should I start? All of these years your presence made my days brighter and problems seemed a whole lot smaller. I am lucky that I met you. Thank you for all the help and support in the field of science and outside it. I enjoyed very much interesting talks and discussions.

Thanks to all my co-authors, **Eero Lindholm, Camilla Cervin, Henrik Borg, Gunnar Stenström, Per Fernlund, Hans Arnqvist, Annika Ekbon-Schnell, Jan Bolinder, Jan Eriksson, Soffia Gudbjörnsdottir, Lennarth Nyström, Peter Nilsson, Carl-David Agardh and Mona Landin-Olsson**, for excellent collaboration.

I would like to express my extreme love and thanks to my friends from the lab: **Hemang**, my twin brother, at least with the “kh” part in the surname. Thanks for the joy all of this years and never ending phone calls, for sharing with me worries and happiness. **Anna J**, my little friend who is capable of a giant friendship. Thanks for your patience with me and expertise in almost everything. Thanks **Victoria G**, my dearest friend thank you a lot for helping me out with very important things. I will never forget your support. **Soley T**, thanks for being such a nice friend, I miss you. **Nael** for your company, our interesting talks and great help in the lab. Thanks **Marketa S** for interesting discussions about important things in women’s life, supporting and helping. I thank **Peter O** for proof-reading my thesis. Thanks to be a member of “Asian team” during lunch breaks. Thanks **Corrado** for your generosity and efforts to help, friendship and support. **Jacqueline** thanks for helping me out and for a great time in Roma. **Kristian L**, thanks for very interesting, spiritual discussions over long nights at Wallenberg laboratory. My endless love and many thanks to my Italian friends **Roberta, Cristiano, Nicolò** and **Lorenza**, thanks for your kindness and support.

Special thanks to my special friends, **Henrietta** for warming my heart, **Caroline** for your wise advices, **Anastasia** and **Sabina** for your attentiveness and support, **Tereza** for your devotion all of these years. I thank my previous wonderful roommates **Johan H** and **Barbro P. Martins K**, thanks for friendship and attention. **Maja** thanks for the lovely times we spent together and nice presents. **Ragnar and Esa**, I adore you both, thanks for everything, for music and chocolate and interesting discussions. Thanks, **Beatrice, Yuedan, Damon and Sassan** for your friendship, attention and support. Thanks **Lovisa** for lovely cakes and chocolate supplies. Thanks **Tina R, Charlotta, Lina and Anders O** and all past Ph.D students **Maria C, Jenny, Fredrik, Emma** for being such nice people to be around. Thanks **Johan Hu** for solving my computer problems and crazy parties in the past. Thanks to **Christina R, Ann R, Ulrika G** and **Gabriella G** for greatest support and help with everything inside and outside lab. Thanks **Margareta** for your humour, keeping me under control and teaching me lab secrets. Thanks **Anna B**, for your generosity, help and support. Thanks to **Anne V, June L, and Ulrika B-N** for helping me with administrative work. Thanks **Peter A** for explaining statistical issues. Thanks **Ola H** and **Malin F** for listening to my frustrations. Thanks **Jeanette** and **Tina** for a lot of fun. Many thanks to **Sandra, Marina and Taras, Vladimer, Olga, Ramunas, Ligita** for great post Soviet Union friendship. Thanks to **Marloes, Mikael L, Charlotte L, Olle, Phillipe, Tord, Jasmina, Mattias, Jalal, Lisbeth, Malin N, Malin S, Mona, Lena R, Marju, Martin R, Kristina B, Bengt H, Bengt L**, for being such nice people to be around both at and off work. Thanks to other people in CRC and Wallenberg laboratory: **Avinash, Hee-Bok, Anita, Bodil, Ida, Rasmus, Jasper, Thea, Åke, Hindrik, Erik, Lena E, Dina, Albert, Holger, Björn D, Kalle, Anders R, Anders D, Cecilia N, Maj, Inga-Britt, Ulla H, Pernilla S, Margot, Per B, Caroline S, Sabina J, Camilla H, Camilla O** and **Izabela**.

I would like to specially thank my lovely parents **Tsiala** and **Otari**, for their patience, support, love and care. I really appreciate all what you did for my well-being and better future. ძალიან მიყვარხართ და მადლობა ყველაფრისთვის!

I thank my wonderful brother **Mishiko** and his nice family **Tamriko, Otari, Mishiko, Tiko, Tina, Shushana and Tamuna** for support. didi madloba yvelas. Thanks to my cousins **Koba** and **Maia** and their families, my aunt **Lamara**. Thanks to **Bibileishvilebi** and their big and nice family.

Special thanks to my lovely friends from Georgia, **Tiniko, Alisa, Tamuna Kh, Tamuna G, Maka, Batsa, Madona, Matsaso, Nino, Eka B, Elene, Anuki, Natia, Vata, Tamuna N, Sikha, Lobjana, Omara, Dato, Torna, Sesi, Tseroebi, Likuna, Tako Ch, Maka J, Maiko A, Teo** and **Shore, Lali Ch** and their nice families. Thanks **Marika K** my relative and a great friend. Thanks to all my father's and mothers nice friends.

Thanks to my **University AIETI** and Clinical Hospital, **Endocrine Department** especially that I had opportunity to meet so many nice people.
Special thanks to my lovely friends from Sweden, **Tamara** and **Svetlana**, It was a fortune I met you, now I think I know you for ages, I love you both! **Sasha** and **Mary** thanks for share and support. გკოცნით ძაღიან ბევრს ორივეს!
Thanks to **Andreas**, for you kindness, support, joy and guidance. Thanks **Olga** and **David** for being such a nice friends, for attention and endless support.
Thanks, გკოცნით! **Daniel** for a lots of fun. Thanks **Farah** and her wonderful family for great care. Thanks to **Merab** and **Zaal Kokaia**, **Tamara L** and **Tamara Ch** and their wonderful families for support and hope. Thanks **Tasin** and **Narina** for a nice company. Thanks **Ingrid C** and **Maria T** for being such a great Swedish teachers and persons. Thanks **Lisbet G** for a nice company.
Thanks all the wonderful personal in the **surgical department 9B** in Malmö for bringing me to life again.

Hope I will be forgiven if I missed someone to acknowledge.

References

1. **Eknoyan G, Nagy J** 2005 A history of diabetes mellitus or how a disease of the kidneys evolved into a kidney disease. *Adv Chronic Kidney Dis* 12:223-9
2. **Gale EA** 2001 The discovery of type 1 diabetes. *Diabetes* 50:217-26
3. **Rosenfeld L** 2002 Insulin: discovery and controversy. *Clin Chem* 48:2270-88
4. **Falta W BR** 1931 Insularer und insulinresistenter diabetes. *Klin Wochenschr* 10:438-443
5. **Himsworth H** 1936 Diabetes mellitus: a differentiation onto insulin sensitive and insulin-insensitive types. *Lancet* 1:127-30
6. **Lister J, Nash J, Ledingham U** 1951 Constitution and insulin sensitivity in diabetes mellitus. *Br Med J* 1:376-9
7. 1965 Diabetes mellitus. Report of a WHO expert committee. *World Health Organ Tech Rep Ser* 310:1-44
8. **Cudworth A** 1976 The aetiology of diabetes mellitus. *Br J Hosp Med* 16:207-216
9. **Bottazzo GF, Bosi E, Cull CA, et al.** 2005 IA-2 antibody prevalence and risk assessment of early insulin requirement in subjects presenting with type 2 diabetes (UKPDS 71). *Diabetologia* 48:703-8
10. 1997 Report of the Expert Committee on the Diagnosis and Classification of Diabetes Mellitus. *Diabetes Care* 20:1183-97
11. **Alberti KG, Zimmet PZ** 1998 Definition, diagnosis and classification of diabetes mellitus and its complications. Part 1: diagnosis and classification of diabetes mellitus provisional report of a WHO consultation. *Diabet Med* 15:539-53
12. 2003 Report of the expert committee on the diagnosis and classification of diabetes mellitus. *Diabetes Care* 26 Suppl 1:S5-20
13. **WHO** 2006 Definition and diagnosis of diabetes mellitus and intermediate hyperglycemia : report of a WHO/IDF consultation. 2006: Geneva.
14. 2009 Diagnosis and classification of diabetes mellitus. *Diabetes Care* 32 Suppl 1:S62-7
15. **Fuller JH, Shipley MJ, Rose G, Jarrett RJ, Keen H** 1980 Coronary-heart-disease risk and impaired glucose tolerance. The Whitehall study. *Lancet* 1:1373-6
16. **Charles MA, Fontbonne A, Thibault N, Warnet JM, Rosselin GE, Eschwege E** 1991 Risk factors for NIDDM in white population. Paris prospective study. *Diabetes* 40:796-9
17. **Wild S, Roglic G, Green A, Sicree R, King H** 2004 Global prevalence of diabetes: estimates for the year 2000 and projections for 2030. *Diabetes Care* 27:1047-53
18. **Candib LM** 2007 Obesity and diabetes in vulnerable populations: reflection on proximal and distal causes. *Ann Fam Med* 5:547-56
19. **Rottevel J, Belksma EJ, Renders CM, Hirasing RA, Delemarre-Van de Waal HA** 2007 Type 2 diabetes in children in the Netherlands: the need for diagnostic protocols. *Eur J Endocrinol* 157:175-80

-
20. **Fox CS, Pencina MJ, Meigs JB, Vasan RS, Levitzky YS, D'Agostino RB, Sr.** 2006 Trends in the incidence of type 2 diabetes mellitus from the 1970s to the 1990s: the Framingham Heart Study. *Circulation* 113:2914-8
 21. **Knip M, Siljander H** 2008 Autoimmune mechanisms in type 1 diabetes. *Autoimmun Rev* 7:550-7
 22. **Imagawa A, Hanafusa T, Miyagawa J, Matsuzawa Y** 2000 A novel subtype of type 1 diabetes mellitus characterized by a rapid onset and an absence of diabetes-related antibodies. Osaka IDDM Study Group. *N Engl J Med* 342:301-7
 23. **Roep BO** 2003 The role of T-cells in the pathogenesis of Type 1 diabetes: from cause to cure. *Diabetologia* 46:305-21
 24. **Amrani A, Verdaguer J, Thiessen S, Bou S, Santamaria P** 2000 IL-1alpha, IL-1beta, and IFN-gamma mark beta cells for Fas-dependent destruction by diabetogenic CD4(+) T lymphocytes. *J Clin Invest* 105:459-68
 25. **Thomas HE, Kay TW** 2001 How beta cells die in type 1 diabetes. *Curr Dir Autoimmun* 4:144-70
 26. **Marleau AM, Sarvetnick N** 2005 T cell homeostasis in tolerance and immunity. *J Leukoc Biol* 78:575-84
 27. **Bingley PJ, Bonifacio E, Williams AJ, Genovese S, Bottazzo GF, Gale EA** 1997 Prediction of IDDM in the general population: strategies based on combinations of autoantibody markers. *Diabetes* 46:1701-10
 28. **Komulainen J, Kulmala P, Savola K, et al.** 1999 Clinical, autoimmune, and genetic characteristics of very young children with type 1 diabetes. Childhood Diabetes in Finland (DiMe) Study Group. *Diabetes Care* 22:1950-5
 29. **Sabbah E, Savola K, Kulmala P, et al.** 1999 Diabetes-associated autoantibodies in relation to clinical characteristics and natural course in children with newly diagnosed type 1 diabetes. The Childhood Diabetes In Finland Study Group. *J Clin Endocrinol Metab* 84:1534-9
 30. **Borg H, Arnqvist HJ, Bjork E, et al.** 2003 Evaluation of the new ADA and WHO criteria for classification of diabetes mellitus in young adult people (15-34 yrs) in the Diabetes Incidence Study in Sweden (DISS). *Diabetologia* 46:173-81
 31. **Gale EA** 2008 Congenital rubella: citation virus or viral cause of type 1 diabetes? *Diabetologia* 51:1559-66
 32. **Stene LC, Nafstad P** 2001 Relation between occurrence of type 1 diabetes and asthma. *Lancet* 357:607-8
 33. **Littorin B, Blom P, Scholin A, et al.** 2006 Lower levels of plasma 25-hydroxyvitamin D among young adults at diagnosis of autoimmune type 1 diabetes compared with control subjects: results from the nationwide Diabetes Incidence Study in Sweden (DISS). *Diabetologia* 49:2847-52
 34. **Yoon JW, Austin M, Onodera T, Notkins AL** 1979 Isolation of a virus from the pancreas of a child with diabetic ketoacidosis. *N Engl J Med* 300:1173-9
 35. **Lonnrot M, Korpela K, Knip M, et al.** 2000 Enterovirus infection as a risk factor for beta-cell autoimmunity in a prospectively observed birth cohort: the Finnish Diabetes Prediction and Prevention Study. *Diabetes* 49:1314-8

-
36. **Honeyman MC, Coulson BS, Stone NL, et al.** 2000 Association between rotavirus infection and pancreatic islet autoimmunity in children at risk of developing type 1 diabetes. *Diabetes* 49:1319-24
 37. **Akerblom HK, Vaarala O, Hyoty H, Ilonen J, Knip M** 2002 Environmental factors in the etiology of type 1 diabetes. *Am J Med Genet* 115:18-29
 38. **Johansson C, Samuelsson U, Ludvigsson J** 1994 A high weight gain early in life is associated with an increased risk of type 1 (insulin-dependent) diabetes mellitus. *Diabetologia* 37:91-4
 39. **Virtanen SM, Aro A** 1994 Dietary factors in the aetiology of diabetes. *Ann Med* 26:469-78
 40. **Lammi N, Taskinen O, Moltchanova E, et al.** 2007 A high incidence of type 1 diabetes and an alarming increase in the incidence of type 2 diabetes among young adults in Finland between 1992 and 1996. *Diabetologia* 50:1393-400
 41. **Karvonen M, Viik-Kajander M, Moltchanova E, Libman I, LaPorte R, Tuomilehto J** 2000 Incidence of childhood type 1 diabetes worldwide. Diabetes Mondiale (DiaMond) Project Group. *Diabetes Care* 23:1516-26
 42. **Harjutsalo V, Sjoberg L, Tuomilehto J** 2008 Time trends in the incidence of type 1 diabetes in Finnish children: a cohort study. *Lancet* 371:1777-82
 43. **Eisenbarth GS** 1986 Type I diabetes mellitus. A chronic autoimmune disease. *N Engl J Med* 314:1360-8
 44. **Lyssenko V, Jonsson A, Almgren P, et al.** 2008 Clinical Risk Factors, DNA Variants, and the Development of Type 2 Diabetes. *N Engl J Med* 359:2220-2232
 45. **Stumvoll M, Goldstein BJ, van Haeften TW** 2005 Type 2 diabetes: principles of pathogenesis and therapy. *Lancet* 365:1333-46
 46. **Zargar AH, Wani AA, Laway BA, et al.** 2008 Prevalence of diabetes mellitus and other abnormalities of glucose tolerance in young adults aged 20-40 years in North India (Kashmir Valley). *Diabetes Res Clin Pract*
 47. **King H, Rewers M** 1993 Global estimates for prevalence of diabetes mellitus and impaired glucose tolerance in adults. WHO Ad Hoc Diabetes Reporting Group. *Diabetes Care* 16:157-77
 48. **Goran MI, Ball GD, Cruz ML** 2003 Obesity and risk of type 2 diabetes and cardiovascular disease in children and adolescents. *J Clin Endocrinol Metab* 88:1417-27
 49. **Leslie RD, Pozzilli P** 1994 Type I diabetes masquerading as type II diabetes. Possible implications for prevention and treatment. *Diabetes Care* 17:1214-9
 50. **Irvine WJ, McCallum CJ, Gray RS, Duncan LJ** 1977 Clinical and pathogenic significance of pancreatic-islet-cell antibodies in diabetics treated with oral hypoglycaemic agents. *Lancet* 1:1025-7
 51. **Irvine WJ, Sawers JS, Feek CM, Prescott RJ, Duncan LJ** 1979 The value of islet cell antibody in predicting secondary failure of oral hypoglycaemic agent therapy in Diabetes mellitus. *J Clin Lab Immunol* 2:23-6
 52. **Groop LC, Bottazzo GF, Doniach D** 1986 Islet cell antibodies identify latent type I diabetes in patients aged 35-75 years at diagnosis. *Diabetes* 35:237-41
 53. **Tuomi T, Groop LC, Zimmet PZ, Rowley MJ, Knowles W, Mackay IR** 1993 Antibodies to glutamic acid decarboxylase reveal latent autoimmune

-
- diabetes mellitus in adults with a non-insulin-dependent onset of disease. *Diabetes* 42:359-62
54. **Groop L, Miettinen A, Groop PH, Meri S, Koskimies S, Bottazzo GF** 1988 Organ-specific autoimmunity and HLA-DR antigens as markers for beta-cell destruction in patients with type II diabetes. *Diabetes* 37:99-103
 55. **Zimmet P, Turner R, McCarty D, Rowley M, Mackay I** 1999 Crucial points at diagnosis. Type 2 diabetes or slow type 1 diabetes. *Diabetes Care* 22 Suppl 2:B59-64
 56. **Juneja R, Palmer JP** 1999 Type 1 1/2 diabetes: myth or reality? *Autoimmunity* 29:65-83
 57. **Seissler J, de Sonnaville JJ, Morgenthaler NG, et al.** 1998 Immunological heterogeneity in type I diabetes: presence of distinct autoantibody patterns in patients with acute onset and slowly progressive disease. *Diabetologia* 41:891-7
 58. **Zinman B, Kahn SE, Haffner SM, O'Neill MC, Heise MA, Freed MI** 2004 Phenotypic characteristics of GAD antibody-positive recently diagnosed patients with type 2 diabetes in North America and Europe. *Diabetes* 53:3193-200
 59. **Tuomi T, Carlsson A, Li H, et al.** 1999 Clinical and genetic characteristics of type 2 diabetes with and without GAD antibodies. *Diabetes* 48:150-7
 60. **Fourlanos S, Dotta F, Greenbaum CJ, et al.** 2005 Latent autoimmune diabetes in adults (LADA) should be less latent. *Diabetologia* 48:2206-12
 61. **Gottsater A, Landin-Olsson M, Lernmark A, Fernlund P, Sundkvist G, Hagopian WA** 1995 Glutamate decarboxylase antibody levels predict rate of beta-cell decline in adult-onset diabetes. *Diabetes Res Clin Pract* 27:133-40
 62. **Turner R, Stratton I, Horton V, et al.** 1997 UKPDS 25: autoantibodies to islet-cell cytoplasm and glutamic acid decarboxylase for prediction of insulin requirement in type 2 diabetes. UK Prospective Diabetes Study Group. *Lancet* 350:1288-93
 63. **van Deutekom AW, Heine RJ, Simsek S** 2008 The islet autoantibody titres: their clinical relevance in latent autoimmune diabetes in adults (LADA) and the classification of diabetes mellitus. *Diabet Med* 25:117-25
 64. **Fajans SS, Bell GI, Polonsky KS** 2001 Molecular mechanisms and clinical pathophysiology of maturity-onset diabetes of the young. *N Engl J Med* 345:971-80
 65. **Lehto M, Tuomi T, Mahtani MM, et al.** 1997 Characterization of the MODY3 phenotype. Early-onset diabetes caused by an insulin secretion defect. *J Clin Invest* 99:582-91
 66. **Yamagata K, Furuta H, Oda N, et al.** 1996 Mutations in the hepatocyte nuclear factor-4alpha gene in maturity-onset diabetes of the young (MODY1). *Nature* 384:458-60
 67. **Froguel P, Zouali H, Vionnet N, et al.** 1993 Familial hyperglycemia due to mutations in glucokinase. Definition of a subtype of diabetes mellitus. *N Engl J Med* 328:697-702
 68. **Hattersley AT, Turner RC, Permutt MA, et al.** 1992 Linkage of type 2 diabetes to the glucokinase gene. *Lancet* 339:1307-10

-
69. **Yamagata K, Oda N, Kaisaki PJ, et al.** 1996 Mutations in the hepatocyte nuclear factor-1alpha gene in maturity-onset diabetes of the young (MODY3). *Nature* 384:455-8
 70. **Stoffers DA, Ferrer J, Clarke WL, Habener JF** 1997 Early-onset type-II diabetes mellitus (MODY4) linked to IPF1. *Nat Genet* 17:138-9
 71. **Horikawa Y, Iwasaki N, Hara M, et al.** 1997 Mutation in hepatocyte nuclear factor-1 beta gene (TCF2) associated with MODY. *Nat Genet* 17:384-5
 72. **Malecki MT, Jhala US, Antonellis A, et al.** 1999 Mutations in NEUROD1 are associated with the development of type 2 diabetes mellitus. *Nat Genet* 23:323-8
 73. **Winckler W, Weedon MN, Graham RR, et al.** 2007 Evaluation of common variants in the six known maturity-onset diabetes of the young (MODY) genes for association with type 2 diabetes. *Diabetes* 56:685-93
 74. **Weedon MN, Clark VJ, Qian Y, et al.** 2006 A common haplotype of the glucokinase gene alters fasting glucose and birth weight: association in six studies and population-genetics analyses. *Am J Hum Genet* 79:991-1001
 75. **Vaxillaire M, Dina C, Lobbens S, et al.** 2005 Effect of common polymorphisms in the HNF4alpha promoter on susceptibility to type 2 diabetes in the French Caucasian population. *Diabetologia* 48:440-4
 76. **Triggs-Raine BL, Kirkpatrick RD, Kelly SL, et al.** 2002 HNF-1alpha G319S, a transactivation-deficient mutant, is associated with altered dynamics of diabetes onset in an Oji-Cree community. *Proc Natl Acad Sci U S A* 99:4614-9
 77. **Silander K, Mohlke KL, Scott LJ, et al.** 2004 Genetic variation near the hepatocyte nuclear factor-4 alpha gene predicts susceptibility to type 2 diabetes. *Diabetes* 53:1141-9
 78. **Holmkvist J, Almgren P, Lyssenko V, et al.** 2008 Common variants in maturity-onset diabetes of the young genes and future risk of type 2 diabetes. *Diabetes* 57:1738-44
 79. **Hara K, Horikoshi M, Kitazato H, et al.** 2006 Hepatocyte nuclear factor-4alpha P2 promoter haplotypes are associated with type 2 diabetes in the Japanese population. *Diabetes* 55:1260-4
 80. **Bonnycastle LL, Willer CJ, Conneely KN, et al.** 2006 Common variants in maturity-onset diabetes of the young genes contribute to risk of type 2 diabetes in Finns. *Diabetes* 55:2534-40
 81. **Barroso I, Luan J, Wheeler E, et al.** 2008 Population-specific risk of type 2 diabetes (T2D) conferred by HNF4A P2 promoter variants: a lesson for replication studies. *Diabetes*
 82. **Bagwell AM, Bento JL, Mychaleckyj JC, Freedman BI, Langefeld CD, Bowden DW** 2005 Genetic analysis of HNF4A polymorphisms in Caucasian-American type 2 diabetes. *Diabetes* 54:1185-90
 83. **MacDonald PE, Joseph JW, Rorsman P** 2005 Glucose-sensing mechanisms in pancreatic beta-cells. *Philos Trans R Soc Lond B Biol Sci* 360:2211-25
 84. **Mitrakou A, Kelley D, Mokan M, et al.** 1992 Role of reduced suppression of glucose production and diminished early insulin release in impaired glucose tolerance. *N Engl J Med* 326:22-9

-
85. **Steiner DF, Oyer PE** 1967 THE BIOSYNTHESIS OF INSULIN AND A PROBABLE PRECURSOR OF INSULIN BY A HUMAN ISLET CELL ADENOMA. *Proc Natl Acad Sci U S A* 57:473-480
 86. **Chance RE, Ellis RM, Bromer WW** 1968 Porcine proinsulin: characterization and amino acid sequence. *Science* 161:165-7
 87. **Naithani VK, Dechesne M, Markussen J, Heding LG, Larsen UD** 1975 Studies on polypeptides, VI. Synthesis, circular dichroism and immunological studies of tyrosyl C-peptide of human proinsulin. *Hoppe Seylers Z Physiol Chem* 356:1305-12
 88. **Steiner DF** 2004 The proinsulin C-peptide--a multirole model. *Exp Diabetes Res* 5:7-14
 89. **Polonsky KS, Rubenstein AH** 1984 C-peptide as a measure of the secretion and hepatic extraction of insulin. Pitfalls and limitations. *Diabetes* 33:486-94
 90. **Wahren J, Johansson BL, Wallberg-Henriksson H, Linde B, Fernqvist-Forbes E, Zierath JR** 1996 C-peptide revisited--new physiological effects and therapeutic implications. *J Intern Med* 240:115-24
 91. **Ekberg K, Brismar T, Johansson BL, et al.** 2007 C-Peptide replacement therapy and sensory nerve function in type 1 diabetic neuropathy. *Diabetes Care* 30:71-6
 92. **Rebsomen L, Khammar A, Raccach D, Tsimaratos M** 2008 C-Peptide effects on renal physiology and diabetes. *Exp Diabetes Res* 2008:281536
 93. **Hansen A, Johansson BL, Wahren J, von Bibra H** 2002 C-peptide exerts beneficial effects on myocardial blood flow and function in patients with type 1 diabetes. *Diabetes* 51:3077-82
 94. **Little RR, Rohlfing CL, Tennill AL, et al.** 2008 Standardization of C-peptide measurements. *Clin Chem* 54:1023-6
 95. **Genovese S, Bonifacio E, McNally JM, et al.** 1992 Distinct cytoplasmic islet cell antibodies with different risks for type 1 (insulin-dependent) diabetes mellitus. *Diabetologia* 35:385-8
 96. **Bottazzo GF, Florin-Christensen A, Doniach D** 1974 Islet-cell antibodies in diabetes mellitus with autoimmune polyendocrine deficiencies. *Lancet* 2:1279-83
 97. **Landin-Olsson M, Karlsson A, Dahlquist G, Blom L, Lernmark A, Sundkvist G** 1989 Islet cell and other organ-specific autoantibodies in all children developing type 1 (insulin-dependent) diabetes mellitus in Sweden during one year and in matched control children. *Diabetologia* 32:387-95
 98. **Karjalainen J, Salmela P, Ilonen J, Surcel HM, Knip M** 1989 A comparison of childhood and adult type I diabetes mellitus. *N Engl J Med* 320:881-6
 99. **Niskanen L, Karjalainen J, Sarlund H, Siitonen O, Uusitupa M** 1991 Five-year follow-up of islet cell antibodies in type 2 (non-insulin-dependent) diabetes mellitus. *Diabetologia* 34:402-8
 100. **Landin-Olsson M, Nilsson KO, Lernmark A, Sundkvist G** 1990 Islet cell antibodies and fasting C-peptide predict insulin requirement at diagnosis of diabetes mellitus. *Diabetologia* 33:561-8
 101. **Bosi EP, Garancini MP, Poggiali F, Bonifacio E, Gallus G** 1999 Low prevalence of islet autoimmunity in adult diabetes and low predictive value of

-
- islet autoantibodies in the general adult population of northern Italy. *Diabetologia* 42:840-4
102. **Kawasaki E, Moriuchi R, Takino H, et al.** 1992 Autoantibodies to 64,000-M(r) islet cell protein in long-term type 1 (insulin-dependent) diabetic patients. *Diabetologia* 35:748-52
 103. **Baekkeskov S, Nielsen JH, Marner B, Bilde T, Ludvigsson J, Lernmark A** 1982 Autoantibodies in newly diagnosed diabetic children immunoprecipitate human pancreatic islet cell proteins. *Nature* 298:167-9
 104. **Baekkeskov S, Aanstoot HJ, Christgau S, et al.** 1990 Identification of the 64K autoantigen in insulin-dependent diabetes as the GABA-synthesizing enzyme glutamic acid decarboxylase. *Nature* 347:151-6
 105. **Velloso LA, Kampe O, Hallberg A, Christmansson L, Betsholtz C, Karlsson FA** 1993 Demonstration of GAD-65 as the main immunogenic isoform of glutamate decarboxylase in type 1 diabetes and determination of autoantibodies using a radioligand produced by eukaryotic expression. *J Clin Invest* 91:2084-90
 106. **Sorenson RL, Garry DG, Brelje TC** 1991 Structural and functional considerations of GABA in islets of Langerhans. *Beta-cells and nerves. Diabetes* 40:1365-74
 107. **Butler MH, Solimena M, Dirx R, Jr., Hayday A, De Camilli P** 1993 Identification of a dominant epitope of glutamic acid decarboxylase (GAD-65) recognized by autoantibodies in stiff-man syndrome. *J Exp Med* 178:2097-106
 108. **Sohnlein P, Muller M, Syren K, et al.** 2000 Epitope spreading and a varying but not disease-specific GAD65 antibody response in Type I diabetes. The Childhood Diabetes in Finland Study Group. *Diabetologia* 43:210-7
 109. **Christie MR, Vohra G, Champagne P, Daneman D, Delovitch TL** 1990 Distinct antibody specificities to a 64-kD islet cell antigen in type 1 diabetes as revealed by trypsin treatment. *J Exp Med* 172:789-94
 110. **Payton MA, Hawkes CJ, Christie MR** 1995 Relationship of the 37,000- and 40,000-M(r) tryptic fragments of islet antigens in insulin-dependent diabetes to the protein tyrosine phosphatase-like molecule IA-2 (ICA512). *J Clin Invest* 96:1506-11
 111. **Lan MS, Lu J, Goto Y, Notkins AL** 1994 Molecular cloning and identification of a receptor-type protein tyrosine phosphatase, IA-2, from human insulinoma. *DNA Cell Biol* 13:505-14
 112. **Xie H, Zhang B, Matsumoto Y, Li Q, Notkins AL, Lan MS** 1997 Autoantibodies to IA-2 and IA-2 beta in insulin-dependent diabetes mellitus recognize conformational epitopes: location of the 37- and 40-kDa fragments determined. *J Immunol* 159:3662-7
 113. **Saeki K, Zhu M, Kubosaki A, Xie J, Lan MS, Notkins AL** 2002 Targeted disruption of the protein tyrosine phosphatase-like molecule IA-2 results in alterations in glucose tolerance tests and insulin secretion. *Diabetes* 51:1842-50
 114. **Harashima S, Clark A, Christie MR, Notkins AL** 2005 The dense core transmembrane vesicle protein IA-2 is a regulator of vesicle number and insulin secretion. *Proc Natl Acad Sci U S A* 102:8704-9

-
115. **Harashima SI, Harashima C, Nishimura T, Hu Y, Notkins AL** 2007 Overexpression of the autoantigen IA-2 puts beta cells into a pre-apoptotic state: autoantigen-induced, but non-autoimmune-mediated, tissue destruction. *Clin Exp Immunol* 150:49-60
 116. **Borg H, Marcus C, Sjoblad S, Fernlund P, Sundkvist G** 2002 Insulin autoantibodies are of less value compared with islet antibodies in the clinical diagnosis of autoimmune type 1 diabetes in children older than 3 yr of age. *Pediatr Diabetes* 3:149-54
 117. **Fuchtenbusch M, Kredel K, Bonifacio E, Schnell O, Ziegler AG** 2000 Exposure to exogenous insulin promotes IgG1 and the T-helper 2-associated IgG4 responses to insulin but not to other islet autoantigens. *Diabetes* 49:918-25
 118. **Bilbao JR, Rica I, Vazquez JA, Busturia MA, Castano L** 2000 Influence of sex and age at onset on autoantibodies against insulin, GAD65 and IA2 in recent onset type 1 diabetic patients. *Horm Res* 54:181-5
 119. **Breidert M, Temelkova-Kurktschiev T, Hanefeld M, Leonhardt W, Schmoeckel A, Seissler J** 1998 Prevalence of diabetes-specific autoantibodies in patients at risk for adult onset diabetes mellitus. *Exp Clin Endocrinol Diabetes* 106:113-6
 120. **Palmer JP, Asplin CM, Clemons P, et al.** 1983 Insulin antibodies in insulin-dependent diabetics before insulin treatment. *Science* 222:1337-9
 121. **Wenzlau JM, Juhl K, Yu L, et al.** 2007 The cation efflux transporter ZnT8 (Slc30A8) is a major autoantigen in human type 1 diabetes. *Proc Natl Acad Sci U S A* 104:17040-5
 122. **Lander ES, Linton LM, Birren B, et al.** 2001 Initial sequencing and analysis of the human genome. *Nature* 409:860-921
 123. **Kruglyak L, Nickerson DA** 2001 Variation is the spice of life. *Nat Genet* 27:234-6
 124. **Reich DE, Gabriel SB, Altshuler D** 2003 Quality and completeness of SNP databases. *Nat Genet* 33:457-8
 125. **Glazier AM, Nadeau JH, Aitman TJ** 2002 Finding genes that underlie complex traits. *Science* 298:2345-9
 126. **Morton NE** 1955 Sequential tests for the detection of linkage. *Am J Hum Genet* 7:277-318
 127. **Neel JV** 1962 Diabetes mellitus: a "thrifty" genotype rendered detrimental by "progress"? *Am J Hum Genet* 14:353-62
 128. **Yang Q, Cui J, Chazaro I, Cupples LA, Demissie S** 2005 Power and type I error rate of false discovery rate approaches in genome-wide association studies. *BMC Genet* 6 Suppl 1:S134
 129. **Hardy GH** 1908 MENDELIAN PROPORTIONS IN A MIXED POPULATION. *Science* 28:49-50
 130. **Faul F, Erdfelder E, Lang AG, Buchner A** 2007 G*Power 3: a flexible statistical power analysis program for the social, behavioral, and biomedical sciences. *Behav Res Methods* 39:175-91
 131. **Risch N, Ghosh S, Todd JA** 1993 Statistical evaluation of multiple-locus linkage data in experimental species and its relevance to human studies:

-
- application to nonobese diabetic (NOD) mouse and human insulin-dependent diabetes mellitus (IDDM). *Am J Hum Genet* 53:702-14
132. **Todd JA, Farrall M** 1996 Panning for gold: genome-wide scanning for linkage in type 1 diabetes. *Hum Mol Genet* 5 Spec No:1443-8
 133. **Redondo MJ, Yu L, Hawa M, et al.** 2001 Heterogeneity of type I diabetes: analysis of monozygotic twins in Great Britain and the United States. *Diabetologia* 44:354-62
 134. **Kyvik KO, Green A, Beck-Nielsen H** 1995 Concordance rates of insulin dependent diabetes mellitus: a population based study of young Danish twins. *BMJ* 311:913-7
 135. **Nerup J, Platz P, Andersen OO, et al.** 1974 HL-A antigens and diabetes mellitus. *Lancet* 2:864-6
 136. **Todd JA, Bell JI, McDevitt HO** 1987 HLA-DQ beta gene contributes to susceptibility and resistance to insulin-dependent diabetes mellitus. *Nature* 329:599-604
 137. **Thorsby E, Ronningen KS** 1993 Particular HLA-DQ molecules play a dominant role in determining susceptibility or resistance to type 1 (insulin-dependent) diabetes mellitus. *Diabetologia* 36:371-7
 138. **Sanjeevi CB, Landin-Olsson M, Kockum I, Dahlquist G, Lernmark A** 1995 Effects of the second HLA-DQ haplotype on the association with childhood insulin-dependent diabetes mellitus. *Tissue Antigens* 45:148-52
 139. **Sabbah E, Savola K, Kulmala P, et al.** 1999 Disease-associated autoantibodies and HLA-DQB1 genotypes in children with newly diagnosed insulin-dependent diabetes mellitus (IDDM). The Childhood Diabetes in Finland Study Group. *Clin Exp Immunol* 116:78-83
 140. **Zavattari P, Lampis R, Mulargia A, et al.** 2000 Confirmation of the DRB1-DQB1 loci as the major component of IDDM1 in the isolated founder population of Sardinia. *Hum Mol Genet* 9:2967-72
 141. **Weets I, Siraux V, Daubresse JC, et al.** 2002 Relation between disease phenotype and HLA-DQ genotype in diabetic patients diagnosed in early adulthood. *J Clin Endocrinol Metab* 87:2597-605
 142. **Bakhtadze E, Borg H, Stenstrom G, et al.** 2006 HLA-DQB1 genotypes, islet antibodies and beta cell function in the classification of recent-onset diabetes among young adults in the nationwide Diabetes Incidence Study in Sweden. *Diabetologia*
 143. **Kockum I, Wassmuth R, Holmberg E, Michelsen B, Lernmark A** 1993 HLA-DQ primarily confers protection and HLA-DR susceptibility in type I (insulin-dependent) diabetes studied in population-based affected families and controls. *Am J Hum Genet* 53:150-67
 144. **Bell GI, Horita S, Karam JH** 1984 A polymorphic locus near the human insulin gene is associated with insulin-dependent diabetes mellitus. *Diabetes* 33:176-83
 145. **Bennett ST, Lucassen AM, Gough SC, et al.** 1995 Susceptibility to human type 1 diabetes at IDDM2 is determined by tandem repeat variation at the insulin gene minisatellite locus. *Nat Genet* 9:284-92

-
146. **Pugliese A, Zeller M, Fernandez A, Jr., et al.** 1997 The insulin gene is transcribed in the human thymus and transcription levels correlated with allelic variation at the INS VNTR-IDDMM2 susceptibility locus for type 1 diabetes. *Nat Genet* 15:293-7
 147. **Vafiadis P, Bennett ST, Todd JA, et al.** 1997 Insulin expression in human thymus is modulated by INS VNTR alleles at the IDDM2 locus. *Nat Genet* 15:289-92
 148. **Hanahan D** 1998 Peripheral-antigen-expressing cells in thymic medulla: factors in self-tolerance and autoimmunity. *Curr Opin Immunol* 10:656-62
 149. **Bennett ST, Todd JA** 1996 Human type 1 diabetes and the insulin gene: principles of mapping polygenes. *Annu Rev Genet* 30:343-70
 150. **Cocozza S, Riccardi G, Monticelli A, et al.** 1988 Polymorphism at the 5' end flanking region of the insulin gene is associated with reduced insulin secretion in healthy individuals. *Eur J Clin Invest* 18:582-6
 151. **Bottini N, Musumeci L, Alonso A, et al.** 2004 A functional variant of lymphoid tyrosine phosphatase is associated with type I diabetes. *Nat Genet* 36:337-8
 152. **Ladner MB, Bottini N, Valdes AM, Noble JA** 2005 Association of the single nucleotide polymorphism C1858T of the PTPN22 gene with type 1 diabetes. *Hum Immunol* 66:60-4
 153. **Gregersen PK** 2005 Gaining insight into PTPN22 and autoimmunity. *Nat Genet* 37:1300-2
 154. **Ueda H, Howson JM, Esposito L, et al.** 2003 Association of the T-cell regulatory gene CTLA4 with susceptibility to autoimmune disease. *Nature* 423:506-11
 155. **Larsen ZM, Kristiansen OP, Mato E, et al.** 1999 IDDM12 (CTLA4) on 2q33 and IDDM13 on 2q34 in genetic susceptibility to type 1 diabetes (insulin-dependent). *Autoimmunity* 31:35-42
 156. **Vella A, Cooper JD, Lowe CE, et al.** 2005 Localization of a type 1 diabetes locus in the IL2RA/CD25 region by use of tag single-nucleotide polymorphisms. *Am J Hum Genet* 76:773-9
 157. **Qu HQ, Montpetit A, Ge B, Hudson TJ, Polychronakos C** 2007 Toward further mapping of the association between the IL2RA locus and type 1 diabetes. *Diabetes* 56:1174-6
 158. **Lowe CE, Cooper JD, Brusko T, et al.** 2007 Large-scale genetic fine mapping and genotype-phenotype associations implicate polymorphism in the IL2RA region in type 1 diabetes. *Nat Genet* 39:1074-82
 159. **Kato H, Takeuchi O, Sato S, et al.** 2006 Differential roles of MDA5 and RIG-I helicases in the recognition of RNA viruses. *Nature* 441:101-5
 160. **Smyth DJ, Cooper JD, Bailey R, et al.** 2006 A genome-wide association study of nonsynonymous SNPs identifies a type 1 diabetes locus in the interferon-induced helicase (IFIH1) region. *Nat Genet* 38:617-9
 161. **Liu S, Wang H, Jin Y, et al.** 2008 The IFIH1 Polymorphisms Are Significantly Associated with Type 1 Diabetes and IFIH1 Gene Expression in Peripheral Blood Mononuclear Cells. *Hum Mol Genet*

-
162. **Todd JA, Walker NM, Cooper JD, et al.** 2007 Robust associations of four new chromosome regions from genome-wide analyses of type 1 diabetes. *Nat Genet* 39:857-64
 163. **Zoledziwska M, Costa G, Pitzalis M, et al.** 2008 Variation within the CLEC16A gene shows consistent disease association with both multiple sclerosis and type 1 diabetes in Sardinia. *Genes Immun*
 164. **Hakonarson H, Grant SF, Bradfield JP, et al.** 2007 A genome-wide association study identifies KIAA0350 as a type 1 diabetes gene. *Nature* 448:591-4
 165. **Ounissi-Benkhalha H, Polychronakos C** 2008 The molecular genetics of type 1 diabetes: new genes and emerging mechanisms. *Trends Mol Med* 14:268-75
 166. **Ikegami H, Noso S, Babaya N, Hiromine Y, Kawabata Y** 2008 Genetic Basis of Type 1 Diabetes: Similarities and Differences between East and West. *Rev Diabet Stud* 5:64-72
 167. **Hill NJ, King C, Flodstrom-Tullberg M** 2008 Recent acquisitions on the genetic basis of autoimmune disease. *Front Biosci* 13:4838-51
 168. **Hakonarson H, Qu HQ, Bradfield JP, et al.** 2008 A novel susceptibility locus for type 1 diabetes on Chr12q13 identified by a genome-wide association study. *Diabetes* 57:1143-6
 169. **Grant SF, Qu HQ, Bradfield JP, et al.** 2008 Follow up analysis of genome-wide association data identifies novel loci for type 1 diabetes. *Diabetes*
 170. **Cooper JD, Smyth DJ, Smiles AM, et al.** 2008 Meta-analysis of genome-wide association study data identifies additional type 1 diabetes risk loci. *Nat Genet* 40:1399-401
 171. **Concannon P, Onengut-Gumuscu S, Todd JA, et al.** 2008 A human type 1 diabetes susceptibility locus maps to chromosome 21q22.3. *Diabetes* 57:2858-61
 172. 2007 Genome-wide association study of 14,000 cases of seven common diseases and 3,000 shared controls. *Nature* 447:661-78
 173. **Bailey R, Cooper JD, Zeitels L, et al.** 2007 Association of the vitamin D metabolism gene CYP27B1 with type 1 diabetes. *Diabetes* 56:2616-21
 174. **Medici F, Hawa M, Ianari A, Pyke DA, Leslie RD** 1999 Concordance rate for type II diabetes mellitus in monozygotic twins: actuarial analysis. *Diabetologia* 42:146-50
 175. **Kaprio J, Tuomilehto J, Koskenvuo M, et al.** 1992 Concordance for type 1 (insulin-dependent) and type 2 (non-insulin-dependent) diabetes mellitus in a population-based cohort of twins in Finland. *Diabetologia* 35:1060-7
 176. **Barnett AH, Eff C, Leslie RD, Pyke DA** 1981 Diabetes in identical twins. A study of 200 pairs. *Diabetologia* 20:87-93
 177. **Newman B, Selby JV, King MC, Slemenda C, Fabsitz R, Friedman GD** 1987 Concordance for type 2 (non-insulin-dependent) diabetes mellitus in male twins. *Diabetologia* 30:763-8
 178. **Groop L, Lyssenko, V, Ling, C, Orho-Melander, M** 2008 Genetic epidemiology of type 2 diabetes. In: *The epidemiology of diabetes mellitus*, Second ed. John Wiley&Sons, Ltd

-
179. **Rich SS** 1990 Mapping genes in diabetes. Genetic epidemiological perspective. *Diabetes* 39:1315-9
 180. **Lyssenko V, Almgren P, Anevski D, et al.** 2005 Predictors of and longitudinal changes in insulin sensitivity and secretion preceding onset of type 2 diabetes. *Diabetes* 54:166-74
 181. **van Tilburg J, van Haften TW, Pearson P, Wijmenga C** 2001 Defining the genetic contribution of type 2 diabetes mellitus. *J Med Genet* 38:569-78
 182. **Grant SF, Thorleifsson G, Reynisdottir I, et al.** 2006 Variant of transcription factor 7-like 2 (TCF7L2) gene confers risk of type 2 diabetes. *Nat Genet* 38:320-3
 183. **Altshuler D, Hirschhorn JN, Klannemark M, et al.** 2000 The common PPARgamma Pro12Ala polymorphism is associated with decreased risk of type 2 diabetes. *Nat Genet* 26:76-80
 184. **Gloyn AL, Weedon MN, Owen KR, et al.** 2003 Large-scale association studies of variants in genes encoding the pancreatic beta-cell KATP channel subunits Kir6.2 (KCNJ11) and SUR1 (ABCC8) confirm that the KCNJ11 E23K variant is associated with type 2 diabetes. *Diabetes* 52:568-72
 185. **Nielsen EM, Hansen L, Carstensen B, et al.** 2003 The E23K variant of Kir6.2 associates with impaired post-OGTT serum insulin response and increased risk of type 2 diabetes. *Diabetes* 52:573-7
 186. **Scott LJ, Bonnycastle LL, Willer CJ, et al.** 2006 Association of transcription factor 7-like 2 (TCF7L2) variants with type 2 diabetes in a Finnish sample. *Diabetes* 55:2649-53
 187. **Sladek R, Rocheleau G, Rung J, et al.** 2007 A genome-wide association study identifies novel risk loci for type 2 diabetes. *Nature* 445:881-5
 188. **Saxena R, Voight BF, Lyssenko V, et al.** 2007 Genome-wide association analysis identifies loci for type 2 diabetes and triglyceride levels. *Science* 316:1331-6
 189. **Scott LJ, Mohlke KL, Bonnycastle LL, et al.** 2007 A genome-wide association study of type 2 diabetes in Finns detects multiple susceptibility variants. *Science* 316:1341-5
 190. **Steinthorsdottir V, Thorleifsson G, Reynisdottir I, et al.** 2007 A variant in CDKAL1 influences insulin response and risk of type 2 diabetes. *Nat Genet* 39:770-5
 191. **Sandhu MS, Weedon MN, Fawcett KA, et al.** 2007 Common variants in WFS1 confer risk of type 2 diabetes. *Nat Genet* 39:951-3
 192. **Zeggini E, Weedon MN, Lindgren CM, et al.** 2007 Replication of genome-wide association signals in UK samples reveals risk loci for type 2 diabetes. *Science* 316:1336-41
 193. **Zeggini E, Scott LJ, Saxena R, et al.** 2008 Meta-analysis of genome-wide association data and large-scale replication identifies additional susceptibility loci for type 2 diabetes. *Nat Genet* 40:638-45
 194. **Lyssenko V, Lupi R, Marchetti P, et al.** 2007 Mechanisms by which common variants in the TCF7L2 gene increase risk of type 2 diabetes. *J Clin Invest* 117:2155-2163

-
195. **Florez JC, Jablonski KA, Bayley N, et al.** 2006 TCF7L2 polymorphisms and progression to diabetes in the Diabetes Prevention Program. *N Engl J Med* 355:241-50
 196. **Rosen ED, Kulkarni RN, Sarraf P, et al.** 2003 Targeted elimination of peroxisome proliferator-activated receptor gamma in beta cells leads to abnormalities in islet mass without compromising glucose homeostasis. *Mol Cell Biol* 23:7222-9
 197. **Lehrke M, Lazar MA** 2005 The many faces of PPARgamma. *Cell* 123:993-9
 198. **Deeb SS, Fajas L, Nemoto M, et al.** 1998 A Pro12Ala substitution in PPARgamma2 associated with decreased receptor activity, lower body mass index and improved insulin sensitivity. *Nat Genet* 20:284-7
 199. **Barroso I, Gurnell M, Crowley VE, et al.** 1999 Dominant negative mutations in human PPARgamma associated with severe insulin resistance, diabetes mellitus and hypertension. *Nature* 402:880-3
 200. **Lehmann JM, Moore LB, Smith-Oliver TA, Wilkison WO, Willson TM, Kliewer SA** 1995 An antidiabetic thiazolidinedione is a high affinity ligand for peroxisome proliferator-activated receptor gamma (PPAR gamma). *J Biol Chem* 270:12953-6
 201. **Aguilar-Bryan L, Bryan J** 1999 Molecular biology of adenosine triphosphate-sensitive potassium channels. *Endocr Rev* 20:101-35
 202. **Florez JC, Burt N, de Bakker PI, et al.** 2004 Haplotype structure and genotype-phenotype correlations of the sulfonylurea receptor and the islet ATP-sensitive potassium channel gene region. *Diabetes* 53:1360-8
 203. **Sperling MA** 2006 ATP-sensitive potassium channels--neonatal diabetes mellitus and beyond. *N Engl J Med* 355:507-10
 204. **Gloyn AL, Pearson ER, Antcliff JF, et al.** 2004 Activating mutations in the gene encoding the ATP-sensitive potassium-channel subunit Kir6.2 and permanent neonatal diabetes. *N Engl J Med* 350:1838-49
 205. **Schwanstecher C, Meyer U, Schwanstecher M** 2002 K(IR)6.2 polymorphism predisposes to type 2 diabetes by inducing overactivity of pancreatic beta-cell ATP-sensitive K(+) channels. *Diabetes* 51:875-9
 206. **van Dam RM, Hoebee B, Seidell JC, Schaap MM, de Bruin TW, Feskens EJ** 2005 Common variants in the ATP-sensitive K+ channel genes KCNJ11 (Kir6.2) and ABCC8 (SUR1) in relation to glucose intolerance: population-based studies and meta-analyses. *Diabet Med* 22:590-8
 207. **Yasuda K, Miyake K, Horikawa Y, et al.** 2008 Variants in KCNQ1 are associated with susceptibility to type 2 diabetes mellitus. *Nat Genet*
 208. **Unoki H, Takahashi A, Kawaguchi T, et al.** 2008 SNPs in KCNQ1 are associated with susceptibility to type 2 diabetes in East Asian and European populations. *Nat Genet*
 209. **Florez JC** 2008 Newly identified loci highlight beta cell dysfunction as a key cause of type 2 diabetes: where are the insulin resistance genes? *Diabetologia* 51:1100-10
 210. **Grarup N, Rose CS, Andersson EA, et al.** 2007 Studies of association of variants near the HHEX, CDKN2A/B, and IGF2BP2 genes with type 2 diabetes

-
- and impaired insulin release in 10,705 Danish subjects: validation and extension of genome-wide association studies. *Diabetes* 56:3105-11
211. **Groenewoud MJ, Dekker JM, Fritsche A, et al.** 2008 Variants of CDKAL1 and IGF2BP2 affect first-phase insulin secretion during hyperglycaemic clamps. *Diabetologia* 51:1659-63
 212. **Pascoe L, Tura A, Patel SK, et al.** 2007 Common variants of the novel type 2 diabetes genes CDKAL1 and HHEX/IDE are associated with decreased pancreatic beta-cell function. *Diabetes* 56:3101-4
 213. **Staiger H, Machicao F, Stefan N, et al.** 2007 Polymorphisms within novel risk loci for type 2 diabetes determine beta-cell function. *PLoS ONE* 2:e832
 214. **Perry JR, Frayling TM** 2008 New gene variants alter type 2 diabetes risk predominantly through reduced beta-cell function. *Curr Opin Clin Nutr Metab Care* 11:371-7
 215. **Scuteri A, Sanna S, Chen WM, et al.** 2007 Genome-wide association scan shows genetic variants in the FTO gene are associated with obesity-related traits. *PLoS Genet* 3:e115
 216. **Frayling TM, Timpson NJ, Weedon MN, et al.** 2007 A common variant in the FTO gene is associated with body mass index and predisposes to childhood and adult obesity. *Science* 316:889-94
 217. **Cecil JE, Tavendale R, Watt P, Hetherington MM, Palmer CN** 2008 An obesity-associated FTO gene variant and increased energy intake in children. *N Engl J Med* 359:2558-66
 218. **Hani EH, Stoffers DA, Chevre JC, et al.** 1999 Defective mutations in the insulin promoter factor-1 (IPF-1) gene in late-onset type 2 diabetes mellitus. *J Clin Invest* 104:R41-8
 219. **Horikawa Y, Oda N, Cox NJ, et al.** 2000 Genetic variation in the gene encoding calpain-10 is associated with type 2 diabetes mellitus. *Nat Genet* 26:163-75
 220. **Sreenan SK, Zhou YP, Otani K, et al.** 2001 Calpains play a role in insulin secretion and action. *Diabetes* 50:2013-20
 221. **Otani K, Han DH, Ford EL, et al.** 2004 Calpain system regulates muscle mass and glucose transporter GLUT4 turnover. *J Biol Chem* 279:20915-20
 222. **Johnson JD, Han Z, Otani K, et al.** 2004 Ryr2 and calpain-10 delineate a novel apoptosis pathway in pancreatic islets. *J Biol Chem* 279:24794-802
 223. **Zhou YP, Sreenan S, Pan CY, et al.** 2003 A 48-hour exposure of pancreatic islets to calpain inhibitors impairs mitochondrial fuel metabolism and the exocytosis of insulin. *Metabolism* 52:528-34
 224. **Song Y, Niu T, Manson JE, Kwiatkowski DJ, Liu S** 2004 Are variants in the CAPN10 gene related to risk of type 2 diabetes? A quantitative assessment of population and family-based association studies. *Am J Hum Genet* 74:208-22
 225. **Ridderstrale M, Nilsson E** 2008 Type 2 diabetes candidate gene CAPN10: first, but not last. *Curr Hypertens Rep* 10:19-24
 226. **Goll DE, Thompson VF, Li H, Wei W, Cong J** 2003 The calpain system. *Physiol Rev* 83:731-801

-
227. **Desai M, Zeggini E, Horton VA, et al.** 2007 An association analysis of the HLA gene region in latent autoimmune diabetes in adults. *Diabetologia* 50:68-73
228. **Hosszafalusi N, Vatay A, Rajczy K, et al.** 2003 Similar genetic features and different islet cell autoantibody pattern of latent autoimmune diabetes in adults (LADA) compared with adult-onset type 1 diabetes with rapid progression. *Diabetes Care* 26:452-7
229. **Horton V, Stratton I, Bottazzo GF, et al.** 1999 Genetic heterogeneity of autoimmune diabetes: age of presentation in adults is influenced by HLA DRB1 and DQB1 genotypes (UKPDS 43). UK Prospective Diabetes Study (UKPDS) Group. *Diabetologia* 42:608-16
230. **Haller K, Kisand K, Pisarev H, et al.** 2007 Insulin gene VNTR, CTLA-4 +49A/G and HLA-DQB1 alleles distinguish latent autoimmune diabetes in adults from type 1 diabetes and from type 2 diabetes group. *Tissue Antigens* 69:121-7
231. **Cervin C, Lyssenko V, Bakhtadze E, et al.** 2008 Genetic similarities between latent autoimmune diabetes in adults, type 1 diabetes, and type 2 diabetes. *Diabetes* 57:1433-7
232. **Bakhtadze E, Cervin C, Lindholm E, et al.** 2008 Common variants in the TCF7L2 gene help to differentiate autoimmune from non-autoimmune diabetes in young (15-34 years) but not in middle-aged (40-59 years) diabetic patients. *Diabetologia*
233. **Njolstad PR, Sovik O, Cuesta-Munoz A, et al.** 2001 Neonatal diabetes mellitus due to complete glucokinase deficiency. *N Engl J Med* 344:1588-92
234. **Stoffel M, Duncan SA** 1997 The maturity-onset diabetes of the young (MODY1) transcription factor HNF4alpha regulates expression of genes required for glucose transport and metabolism. *Proc Natl Acad Sci U S A* 94:13209-14
235. **Duncan SA, Navas MA, Dufort D, Rossant J, Stoffel M** 1998 Regulation of a transcription factor network required for differentiation and metabolism. *Science* 281:692-5
236. **Cereghini S** 1996 Liver-enriched transcription factors and hepatocyte differentiation. *FASEB J* 10:267-82
237. **Lazzaro D, De Simone V, De Magistris L, Lehtonen E, Cortese R** 1992 LFB1 and LFB3 homeoproteins are sequentially expressed during kidney development. *Development* 114:469-79
238. **Duncan SA, Manova K, Chen WS, et al.** 1994 Expression of transcription factor HNF-4 in the extraembryonic endoderm, gut, and nephrogenic tissue of the developing mouse embryo: HNF-4 is a marker for primary endoderm in the implanting blastocyst. *Proc Natl Acad Sci U S A* 91:7598-602
239. **Taraviras S, Monaghan AP, Schutz G, Kelsey G** 1994 Characterization of the mouse HNF-4 gene and its expression during mouse embryogenesis. *Mech Dev* 48:67-79
240. **Rowley CW, Staloch LJ, Divine JK, McCaul SP, Simon TC** 2006 Mechanisms of mutual functional interactions between HNF-4alpha and HNF-

-
- 1alpha revealed by mutations that cause maturity onset diabetes of the young. *Am J Physiol Gastrointest Liver Physiol* 290:G466-75
241. **Frayling TM, Bulamn MP, Ellard S, et al.** 1997 Mutations in the hepatocyte nuclear factor-1alpha gene are a common cause of maturity-onset diabetes of the young in the U.K. *Diabetes* 46:720-5
242. **Chiu KC, Chuang LM, Chu A, Wang M** 2003 Transcription factor 1 and beta-cell function in glucose-tolerant subjects. *Diabet Med* 20:225-30
243. **Weedon MN, Owen KR, Shields B, et al.** 2005 A large-scale association analysis of common variation of the HNF1alpha gene with type 2 diabetes in the U.K. Caucasian population. *Diabetes* 54:2487-91
244. **Boj SF, Parrizas M, Maestro MA, Ferrer J** 2001 A transcription factor regulatory circuit in differentiated pancreatic cells. *Proc Natl Acad Sci U S A* 98:14481-6
245. **Thomas H, Jaschowitz K, Bulman M, et al.** 2001 A distant upstream promoter of the HNF-4alpha gene connects the transcription factors involved in maturity-onset diabetes of the young. *Hum Mol Genet* 10:2089-97
246. **Weedon MN, Owen KR, Shields B, et al.** 2004 Common variants of the hepatocyte nuclear factor-4alpha P2 promoter are associated with type 2 diabetes in the U.K. population. *Diabetes* 53:3002-6
247. **Love-Gregory LD, Wasson J, Ma J, et al.** 2004 A common polymorphism in the upstream promoter region of the hepatocyte nuclear factor-4 alpha gene on chromosome 20q is associated with type 2 diabetes and appears to contribute to the evidence for linkage in an ashkenazi jewish population. *Diabetes* 53:1134-40
248. **Damcott CM, Hoppman N, Ott SH, et al.** 2004 Polymorphisms in both promoters of hepatocyte nuclear factor 4-alpha are associated with type 2 diabetes in the Amish. *Diabetes* 53:3337-41
249. **Iwasaki N, Okabe I, Momoi MY, Ohashi H, Ogata M, Iwamoto Y** 2001 Splice site mutation in the hepatocyte nuclear factor-1 beta gene, IVS2nt + 1G > A, associated with maturity-onset diabetes of the young, renal dysplasia and bicornuate uterus. *Diabetologia* 44:387-8
250. **Montoli A, Colussi G, Massa O, et al.** 2002 Renal cysts and diabetes syndrome linked to mutations of the hepatocyte nuclear factor-1 beta gene: description of a new family with associated liver involvement. *Am J Kidney Dis* 40:397-402
251. **Bellanne-Chantelot C, Chauveau D, Gautier JF, et al.** 2004 Clinical spectrum associated with hepatocyte nuclear factor-1beta mutations. *Ann Intern Med* 140:510-7
252. **Gudmundsson J, Sulem P, Steinthorsdottir V, et al.** 2007 Two variants on chromosome 17 confer prostate cancer risk, and the one in TCF2 protects against type 2 diabetes. *Nat Genet* 39:977-83
253. **Leonard J, Peers B, Johnson T, Ferreri K, Lee S, Montminy MR** 1993 Characterization of somatostatin transactivating factor-1, a novel homeobox factor that stimulates somatostatin expression in pancreatic islet cells. *Mol Endocrinol* 7:1275-83

-
254. **Miller CP, McGehee RE, Jr., Habener JF** 1994 IDX-1: a new homeodomain transcription factor expressed in rat pancreatic islets and duodenum that transactivates the somatostatin gene. *EMBO J* 13:1145-56
 255. **Stoffers DA, Stanojevic V, Habener JF** 1998 Insulin promoter factor-1 gene mutation linked to early-onset type 2 diabetes mellitus directs expression of a dominant negative isoprotein. *J Clin Invest* 102:232-41
 256. **Naya FJ, Stellrecht CM, Tsai MJ** 1995 Tissue-specific regulation of the insulin gene by a novel basic helix-loop-helix transcription factor. *Genes Dev* 9:1009-19
 257. **Ostman J, Arnqvist H, Blohme G, et al.** 1986 Epidemiology of diabetes mellitus in Sweden. Results of the first year of a prospective study in the population age group 15-34 years. *Acta Med Scand* 220:437-45
 258. **Stenstrom G, Berger B, Borg H, Fernlund P, Dorman JS, Sundkvist G** 2002 HLA-DQ genotypes in classic type 1 diabetes and in latent autoimmune diabetes of the adult. *Am J Epidemiol* 156:787-96
 259. **Berglund G, Nilsson P, Eriksson KF, et al.** 2000 Long-term outcome of the Malmo preventive project: mortality and cardiovascular morbidity. *J Intern Med* 247:19-29
 260. **Nilsson PM, Nilsson JA, Berglund G** 2004 Family burden of cardiovascular mortality: risk implications for offspring in a national register linkage study based upon the Malmo Preventive Project. *J Intern Med* 255:229-35
 261. **Olsson ML, Sundkvist G, Lernmark A** 1987 Prolonged incubation in the two-colour immunofluorescence test increases the prevalence and titres of islet cell antibodies in type 1 (insulin-dependent) diabetes mellitus. *Diabetologia* 30:327-32
 262. **Borg H, Fernlund P, Sundkvist G** 1997 Measurement of antibodies against glutamic acid decarboxylase 65 (GADA): two new 125I assays compared with [³⁵S]GAD 65-ligand binding assay. *Clin Chem* 43:779-85
 263. **Karlsen AE, Hagopian WA, Grubin CE, et al.** 1991 Cloning and primary structure of a human islet isoform of glutamic acid decarboxylase from chromosome 10. *Proc Natl Acad Sci U S A* 88:8337-41
 264. **Grubin CE, Daniels T, Toivola B, et al.** 1994 A novel radioligand binding assay to determine diagnostic accuracy of isoform-specific glutamic acid decarboxylase antibodies in childhood IDDM. *Diabetologia* 37:344-50
 265. **Mire-Sluis AR, Das RG, Lernmark A** 1999 The development of a World Health Organisation international standard for islet cell antibodies: the aims and design of an international collaborative study. *Diabetes Metab Res Rev* 15:72-7
 266. **Verge CF, Stenger D, Bonifacio E, et al.** 1998 Combined use of autoantibodies (IA-2 autoantibody, GAD autoantibody, insulin autoantibody, cytoplasmic islet cell antibodies) in type 1 diabetes: Combinatorial Islet Autoantibody Workshop. *Diabetes* 47:1857-66
 267. **Lindholm E, Hallengren B, Agardh CD** 2004 Gender differences in GAD antibody-positive diabetes mellitus in relation to age at onset, C-peptide and other endocrine autoimmune diseases. *Diabetes Metab Res Rev* 20:158-64
 268. **Borg H, Fernlund P, Sundkvist G** 1997 Protein tyrosine phosphatase-like protein IA2-antibodies plus glutamic acid decarboxylase 65 antibodies (GADA)

-
- indicates autoimmunity as frequently as islet cell antibodies assay in children with recently diagnosed diabetes mellitus. *Clin Chem* 43:2358-63
269. **Gottsater A, Landin-Olsson M, Fernlund P, Gullberg B, Lernmark A, Sundkvist G** 1992 Pancreatic beta-cell function evaluated by intravenous glucose and glucagon stimulation. A comparison between insulin and C-peptide to measure insulin secretion. *Scand J Clin Lab Invest* 52:631-9
270. **Ilonen J, Reijonen H, Herva E, et al.** 1996 Rapid HLA-DQB1 genotyping for four alleles in the assessment of risk for IDDM in the Finnish population. The Childhood Diabetes in Finland (DiMe) Study Group. *Diabetes Care* 19:795-800
271. **Sanjeevi CB, Lybrand TP, Stevanovic S, Rammensee HG** 2002 Molecular modeling of eluted peptides from DQ6 molecules (DQB1*0602 and DQB1*0604) negatively and positively associated with type 1 diabetes. *Ann N Y Acad Sci* 958:317-20
272. **Barratt BJ, Payne F, Lowe CE, et al.** 2004 Remapping the insulin gene/IDDM2 locus in type 1 diabetes. *Diabetes* 53:1884-9
273. **Desai M, Zeggini E, Horton VA, et al.** 2006 The variable number of tandem repeats upstream of the insulin gene is a susceptibility locus for latent autoimmune diabetes in adults. *Diabetes* 55:1890-4
274. **Bottini N, Vang T, Cucca F, Mustelin T** 2006 Role of PTPN22 in type 1 diabetes and other autoimmune diseases. *Semin Immunol* 18:207-13
275. **Onengut-Gumuscu S, Buckner JH, Concannon P** 2006 A haplotype-based analysis of the PTPN22 locus in type 1 diabetes. *Diabetes* 55:2883-9
276. **Helgason A, Palsson S, Thorleifsson G, et al.** 2007 Refining the impact of TCF7L2 gene variants on type 2 diabetes and adaptive evolution. *Nat Genet* 39:218-25
277. **Tang K, Fu D, Kotter S, Cotter RJ, Cantor CR, Koster H** 1995 Matrix-assisted laser desorption/ionization mass spectrometry of immobilized duplex DNA probes. *Nucleic Acids Res* 23:3126-31
278. **Barrett JC, Fry B, Maller J, Daly MJ** 2005 Haploview: analysis and visualization of LD and haplotype maps. *Bioinformatics* 21:263-5
279. **Holmkvist J, Cervin C, Lyssenko V, et al.** 2006 Common variants in HNF-1 alpha and risk of type 2 diabetes. *Diabetologia* 49:2882-91
280. **Lehto M, Wipemo C, Ivarsson SA, et al.** 1999 High frequency of mutations in MODY and mitochondrial genes in Scandinavian patients with familial early-onset diabetes. *Diabetologia* 42:1131-7
281. **Glucksmann MA, Lehto M, Tayber O, et al.** 1997 Novel mutations and a mutational hotspot in the MODY3 gene. *Diabetes* 46:1081-6
282. **Landin-Olsson M, Karlsson FA, Lernmark Å, Sundkvist G, and the Diabetes Incidence Study in Sweden Group** 1992 Islet cell and thyrogastric antibodies in 633 consecutive 15-34 yr-old patients in the Diabetes Incidence Study in Sweden. *Diabetes* 41:1022-1027
283. **Törn C, Landin-Olsson M, Östman J, et al.** 2000 Glutamic acid decarboxylase antibodies (GADA) is the most important factor for prediction of insulin therapy within 3 years in young adult diabetic patients not classified as Type 1 diabetes on clinical grounds. *Diab Metab Res Review* 16:442-447

-
284. **Greenbaum CJ, Schatz DA, Cuthbertson D, Zeidler A, Eisenbarth GS, Krischer JP** 2000 Islet cell antibody-positive relatives with human leukocyte antigen DQA1*0102, DQB1*0602: identification by the Diabetes Prevention Trial-type 1. *J Clin Endocrinol Metab* 85:1255-60
285. **LaGasse JM, Brantley MS, Leech NJ, et al.** 2002 Successful prospective prediction of type 1 diabetes in schoolchildren through multiple defined autoantibodies: an 8-year follow-up of the Washington State Diabetes Prediction Study. *Diabetes Care* 25:505-11
286. **Redondo MJ, Babu S, Zeidler A, et al.** 2006 Specific HLA DQ Influence on Expression of Anti-Islet Autoantibodies and Progression to Type 1 Diabetes. *J Clin Endocrinol Metab*
287. **Wilkin TJ** 2001 The accelerator hypothesis: weight gain as the missing link between Type I and Type II diabetes. *Diabetologia* 44:914-22
288. **Bingham C, Ellard S, Nicholls AJ, et al.** 2001 The generalized aminoaciduria seen in patients with hepatocyte nuclear factor-1alpha mutations is a feature of all patients with diabetes and is associated with glucosuria. *Diabetes* 50:2047-52
289. **Menzel R, Kaisaki PJ, Rjasanowski I, Heinke P, Kerner W, Menzel S** 1998 A low renal threshold for glucose in diabetic patients with a mutation in the hepatocyte nuclear factor-1alpha (HNF-1alpha) gene. *Diabet Med* 15:816-20
290. **Yuan X, Waterworth D, Perry JR, et al.** 2008 Population-based genome-wide association studies reveal six loci influencing plasma levels of liver enzymes. *Am J Hum Genet* 83:520-8
291. **Vesterhus M, Haldorsen IS, Raeder H, Molven A, Njolstad PR** 2008 Reduced pancreatic volume in hepatocyte nuclear factor 1A-maturity-onset diabetes of the young. *J Clin Endocrinol Metab* 93:3505-9
292. **Bellanne-Chantelot C, Carette C, Riveline JP, et al.** 2008 The type and the position of HNF1A mutation modulate age at diagnosis of diabetes in patients with maturity-onset diabetes of the young (MODY)-3. *Diabetes* 57:503-8
293. **Pontoglio M, Barra J, Hadchouel M, et al.** 1996 Hepatocyte nuclear factor 1 inactivation results in hepatic dysfunction, phenylketonuria, and renal Fanconi syndrome. *Cell* 84:575-85
294. **Pontoglio M, Prie D, Cheret C, et al.** 2000 HNF1alpha controls renal glucose reabsorption in mouse and man. *EMBO Rep* 1:359-65
295. **Harries LW, Ellard S, Stride A, Morgan NG, Hattersley AT** 2006 Isomers of the TCF1 gene encoding hepatocyte nuclear factor-1 alpha show differential expression in the pancreas and define the relationship between mutation position and clinical phenotype in monogenic diabetes. *Hum Mol Genet* 15:2216-24
296. **Zalloua PA, Shbaklo H, Halaby G, Terwedow H, Xu X, Azar ST** 2002 Type-2 diabetes family history delays the onset of type-1 diabetes. *J Clin Endocrinol Metab* 87:3192-6
297. **Li H, Isomaa B, Taskinen MR, Groop L, Tuomi T** 2000 Consequences of a family history of type 1 and type 2 diabetes on the phenotype of patients with type 2 diabetes. *Diabetes Care* 23:589-94

-
298. **Fagerudd JA, Pettersson-Fernholm KJ, Gronhagen-Riska C, Groop PH** 1999 The impact of a family history of Type II (non-insulin-dependent) diabetes mellitus on the risk of diabetic nephropathy in patients with Type I (insulin-dependent) diabetes mellitus. *Diabetologia* 42:519-26
299. **Moller AM, Dalgaard LT, Pociot F, Nerup J, Hansen T, Pedersen O** 1998 Mutations in the hepatocyte nuclear factor-1alpha gene in Caucasian families originally classified as having Type I diabetes. *Diabetologia* 41:1528-31
300. **Yamada S, Nishigori H, Onda H, et al.** 1997 Identification of mutations in the hepatocyte nuclear factor (HNF)-1 alpha gene in Japanese subjects with IDDM. *Diabetes* 46:1643-7