



LUND UNIVERSITY

Changes and sex differences in patient reported outcomes in rheumatoid factor positive RA-results from a community based study.

Hekmat, Korosh; Jacobsson, Lennart; Nilsson, Jan-Åke; Lindroth, Ylva; Turesson, Carl

Published in:
BMC Musculoskeletal Disorders

DOI:
[10.1186/1471-2474-15-44](https://doi.org/10.1186/1471-2474-15-44)

2014

[Link to publication](#)

Citation for published version (APA):
Hekmat, K., Jacobsson, L., Nilsson, J-Å., Lindroth, Y., & Turesson, C. (2014). Changes and sex differences in patient reported outcomes in rheumatoid factor positive RA-results from a community based study. *BMC Musculoskeletal Disorders*, 15(1), [44]. <https://doi.org/10.1186/1471-2474-15-44>

Total number of authors:
5

General rights

Unless other specific re-use rights are stated the following general rights apply:
Copyright and moral rights for the publications made accessible in the public portal are retained by the authors and/or other copyright owners and it is a condition of accessing publications that users recognise and abide by the legal requirements associated with these rights.

- Users may download and print one copy of any publication from the public portal for the purpose of private study or research.
- You may not further distribute the material or use it for any profit-making activity or commercial gain
- You may freely distribute the URL identifying the publication in the public portal

Read more about Creative commons licenses: <https://creativecommons.org/licenses/>

Take down policy

If you believe that this document breaches copyright please contact us providing details, and we will remove access to the work immediately and investigate your claim.

LUND UNIVERSITY

PO Box 117
221 00 Lund
+46 46-222 00 00

RESEARCH ARTICLE

Open Access

Changes and sex differences in patient reported outcomes in rheumatoid factor positive RA—results from a community based study

Korosh Hekmat*, Lennart T Jacobsson, Jan-Åke Nilsson, Ylva Lindroth and Carl Turesson

Abstract

Background: Patient reported outcomes (PROs) are important measures in rheumatoid arthritis (RA). A register of patients with RA from all rheumatology care providers in Malmö, Sweden, was established in 1997 and has been continually updated. This register includes virtually all the RA patients in the area. The aim of this study was to analyse PROs in surveys of this population conducted between 1997 and 2009, and to assess differences in treatment and outcome in male and female patients.

Method: In 1997, 2002, 2005 and 2009, questionnaires were sent to the RA patients in the register (n = 1016 in 1997; n = 916 in 2002; n = 1625 in 2005; n = 1700 in 2009). Response rates varied between 62 % and 74 %, and 72-74 % was women. Questionnaire data included medication and measures of disability and health related quality of life. Data on rheumatoid factor (RF) tests were retrieved from the databases of the two clinical immunology laboratories in the area. In order to limit the impact of changes in the case mix over time, the study was restricted to RF positive patients. The analyses were stratified by sex.

Results: Patients reported less severe outcomes for all measures in the later surveys compared to 1997, and patients' global disease activity assessment and self-reported pain were further improved in 2009 compared to 2005. Treatment with biologics increased over time from 1997 (none) to 2009 (29%), with no difference between men and women. Visual analogue scales (0-100) for patients' global assessment of disease activity [mean 45 (95 % CI (45-47) vs. 38 (35-40)] and pain [mean 46 (44-49) vs. 38 (36-40)] decreased from 1997 to 2009, with numerically greater improvement in male patients. The mean SF-36 physical component scores also improved, and were higher in men than in women in all surveys.

Conclusion: Pharmacologic treatment of RA became more extensive over time, and there was improvement in all PROs. Despite similar treatment, male patients reported better outcomes, in particular for pain and physical function, compared to female patients. We suggest that patient reported outcomes should be reported separately in male and female patients with RA.

Background

Rheumatoid arthritis (RA) is a chronic, inflammatory disorder, which is characterized by progressive joint damage and has a major impact on physical function and health related quality of life (HRQoL). There is evidence indicating that the disease has become less severe during the last decades, possibly due to better management with more extensive treatment, or secular changes in other factors influencing disease severity. For example, a lower

disease activity and disability in 1995 compared to 1978 has been demonstrated in Swedish patients with RA [1], and a recent survey indicated that the incidence of total hip arthroplasties has decreased in RA patients over time [2]. Furthermore, severe extra-articular RA manifestations such as vasculitis have also become less frequent in recent years [3]. On the other hand, in poor countries many patients still have active, uncontrolled disease [4].

A patient-reported outcome (PRO) is a questionnaire used in a clinical trial or a clinical setting, where the responses are collected directly from the patient. A number of PROs are validated measures that are considered

* Correspondence: Korosh.Hekmat@med.lu.se
Department of Clinical Sciences, Section of Rheumatology, Lund University, Malmö, Sweden

relevant outcomes in quantitative research [5] and feasible, quantitative measures for standard rheumatology clinical care [6]. RA is far more common in women, and sex specific factors may also influence various aspects of disease severity, including PROs. For example, there seem to be gender differences with worse reported HRQoL among female patients with early RA [7], and a fourfold increased risk of work disability in women with RA compared to men [8]. The impact of recent changes in management and recent secular changes on such differences is unknown.

Our aim was to investigate changes over time in PROs such as visual analogue scales (VAS) for patients' global assessment of disease activity and pain, disability and HRQoL, as well as treatment in male and female patients in a population-based sample of patients with RA.

Methods

Patients

In 1997, a register of all known patients with RA in the city of Malmö, Sweden, was established. Inclusion was based on a clinical diagnosis of RA by a rheumatologist and fulfilment of the 1987 American College of Rheumatology (ACR) criteria for RA [9].

The corresponding background population of Malmö was 251,000 in 1997. Patients were recruited from the rheumatology outpatient clinic of Malmö University Hospital (as of 2010 a part of Skåne University Hospital), which is the only hospital serving the city, and from the four rheumatologists in private practice in Malmö [10]. The close collaboration between the university clinic and the private practitioners and the methods for recruiting patients to the register, which has been continuously updated after 2002, have been described in detail previously [10,11,2].

The prevalence of RA in the area (approximately 0.5 % among those aged 20 years and above) and the sex and age distributions in the Malmö RA register were found to be comparable to the RA prevalence in a study from a population-based RA register in Oslo, Norway [12]. Subsequent surveys using the diagnostic index of primary care centres and questionnaires sent to other physicians in the area indicate that >90% of all patients with diagnosed RA in the city at that time were included in the register. All registered cases with RA were validated by review of the case records as previously described [11,2].

Variables

In 1997, 2002, 2005 and 2009, self-administered questionnaires were sent to the patients in the Malmö RA register. Demographics, working status, medication with disease modifying anti-rheumatic drugs (DMARDs), visual analogue scales (VAS) for general health and pain, use of healthcare, the Swedish version of the health assessment questionnaire (HAQ) [13], and HRQoL as measured by

the Swedish version of the short form (SF)-36 were assessed [14,15].

SF-36 is a generic measure of eight health dimensions (physical functioning, physical role, bodily pain, general health, vitality, social functioning, emotional role, mental health) with scale from 0 to 100 (0 worst health). A reminder was sent to patients who did not answer the questionnaire the first time.

The study was approved by the regional research ethics committee in Lund, Sweden. Data on rheumatoid factor (RF) tests were retrieved from the databases of the two clinical immunology laboratories in the area. In order to limit the impact of changes in the case mix, in particular regarding mild, RF negative cases, over time, in the present comparison, only patients with at least one positive RF test were included. The analyses were stratified by sex.

Statistical analysis

Data were analyzed with version 18.0 of the Statistical Package for the Social Sciences (SPSS Inc., Chicago, IL). As the questionnaire data in 1997, 2002, 2005 and 2009 included partly overlapping patient populations, no formal statistical comparisons were made between these patient cohorts. Too few had responded to repeated surveys to allow meaningful longitudinal data analyses. Variables with a normal distribution are presented as means with 95% confidence intervals (95% CI) whereas those with a non-normal distribution are presented as medians with interquartile ranges (IQR). As a conservative estimate we assumed that a significant change had occurred if the 95% CIs of a measure in 1997 and at subsequent years of examination did not overlap. The SF-36 scores were compared to the expected derived from normative values from the Swedish population [16] for each individual, and mean differences from the expected with 95 % CI were calculated for each survey. CIs not including zero were interpreted as indicating a significant difference from the expected.

Results

In 1997, 2002, 2005 and 2008, questionnaires were sent to the RA patients in the register (n = 1016 in 1997; n = 916 in 2002; n = 1625 in 2005 and n = 1700 in 2009). Overall response rates were 74 %, 66 %, 64 % and 62 %, respectively. The demographics of responders with at least one positive test for RF are shown in Table 1. There was no major difference in disease duration and age between the surveys (Table 1).

Temporal trends in treatment and PROs

More patients were treated with methotrexate in 2005 and 2009 compared to 1997 (Figure 1).

As expected, treatment with TNF inhibitors and other biologics was only reported in 2002 and later. Reported

Table 1 Demographics, treatment and patient reported outcomes in four surveys of RF positive patients in the Malmö RA population

	1997	2002	2005	2009
N	668	438	517	454
Disease duration years, mean (SD)	15.0 (13.6)	16.7 (12.5)	15.8 (12.5)	17.2 (12.1)
Female sex	497 (74%)	321 (73%)	368 (71%)	331 (73%)
Age; years, mean	61.9 (14.1)	63.9 (13.6)	62.9 (14.2)	63.8 (13.4)
Current treatment proportion (95 % CI)				
Corticosteroids	19% (16-22)	30% (26-35)	26 % (23-30)	31 % (27-35)
Biologic	0	16% (12-19)	23 % (19-27)	29 % (25-33)
Methotrexate	20% (17-23)	44% (40-49)	56 % (52-60)	58 % (54-63)
Patient reported outcomes mean (95% CI) unless otherwise noted				
HAQ*	1.12 (0.50-1.75)	1.00 (0.50-1.62)	0.88 (0.38-1.38)	0.88 (0.38-1.5)
VAS global	44.8 (42.3-47.4)	40.0 (37.6-42.4)	41.8 (39.6-44.1)	37.6 (35.2-40.0)
VAS pain	46.3 (43.7-48.9)	41.1 (38.8-43.5)	40.8 (38.6-43.0)	38.2 (35.8-40.7)
SF-36 PCS	32.1 (31.0-33.1)	33.2 (32.2-34.4)	34.6 (33.6-35.7)	35.2 (34.0-36.4)
SF-36 MCS	45.4 (44.0-46.7)	46.7 (45.4-48.1)	47.9 (46.7-49.0)	47.1 (45.9-48.3)

* median (IQR).

PCS = Physical component score.

MCS = Mental component score.

current treatment with biologics increased gradually over time from 2002 to 2009, without major differences between male and female patients (Figure 1). In 2009, 29% of patients of both sexes were treated with biologics. Triple therapy with methotrexate, sulphasalazine and antimalarials was used in <1% in 1997, 2002 and 2009. For 2005 data on triple therapy were not available.

Patients' global assessment of disease activity and pain both decreased substantially from 1997 to 2009 (Table 1). There was a similar trend for HAQ, with the exception of 2005 and 2009, when the median HAQ score was stable (Table 1). The mean SF-36 physical component scores were substantially better in the later surveys (Table 1). In particular, there was improvement over time in the physical health

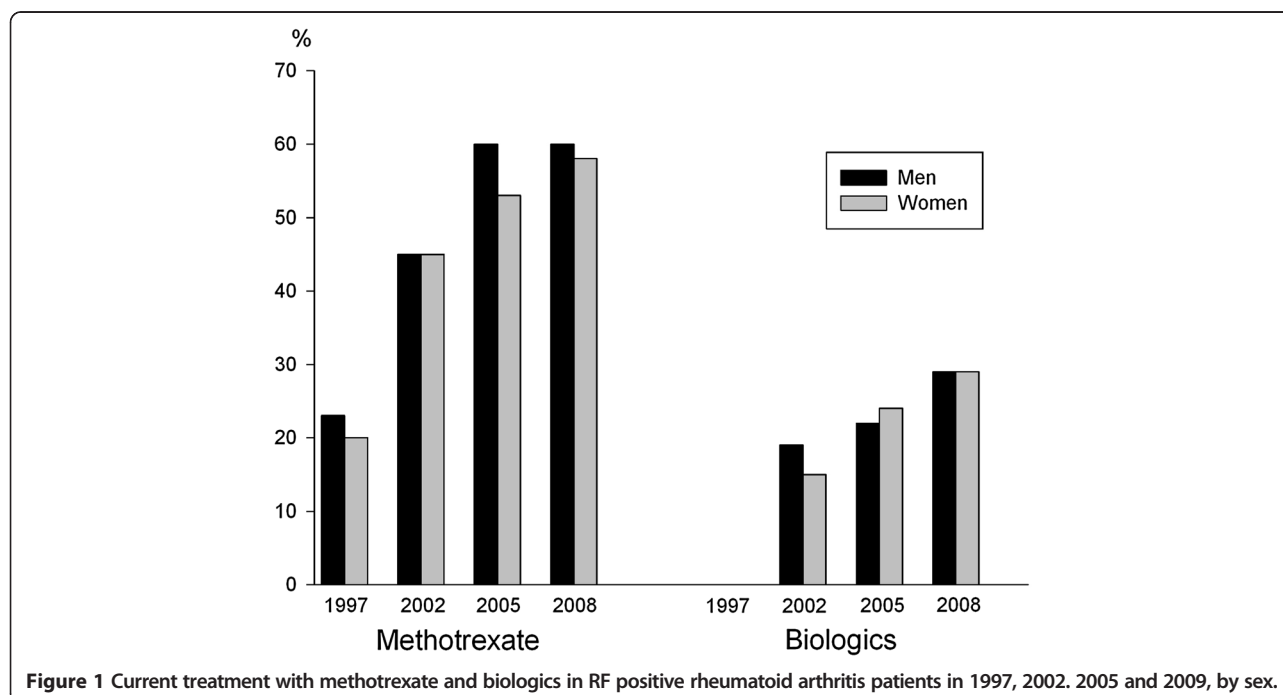


Figure 1 Current treatment with methotrexate and biologics in RF positive rheumatoid arthritis patients in 1997, 2002, 2005 and 2009, by sex.

related scales for physical functioning, role physical and body pain (Figure 2). There were similar, although more modest, changes in the SF-36 mental component score (Table 1) and the mental health related scores (Figure 3). Despite these improvements, even in 2009 the scores were significantly lower compared to the expected derived from normative values from the Swedish population (mean difference with 95% CI for Physical functioning 21.9 (19.3-24.4), Role physical 21.2 (17.0-25.5) Body pain 18.4 (16.3-20.5), General health 19.0 (16.8-21.3), Vitality 15.6 (13.1-18.1), Social functioning 13.6 (11.0-16.2), Role-emotion 15.2 (11.1-19.2) and Mental health 7.4 (5.3-9.5)).

Sex differences in PROs

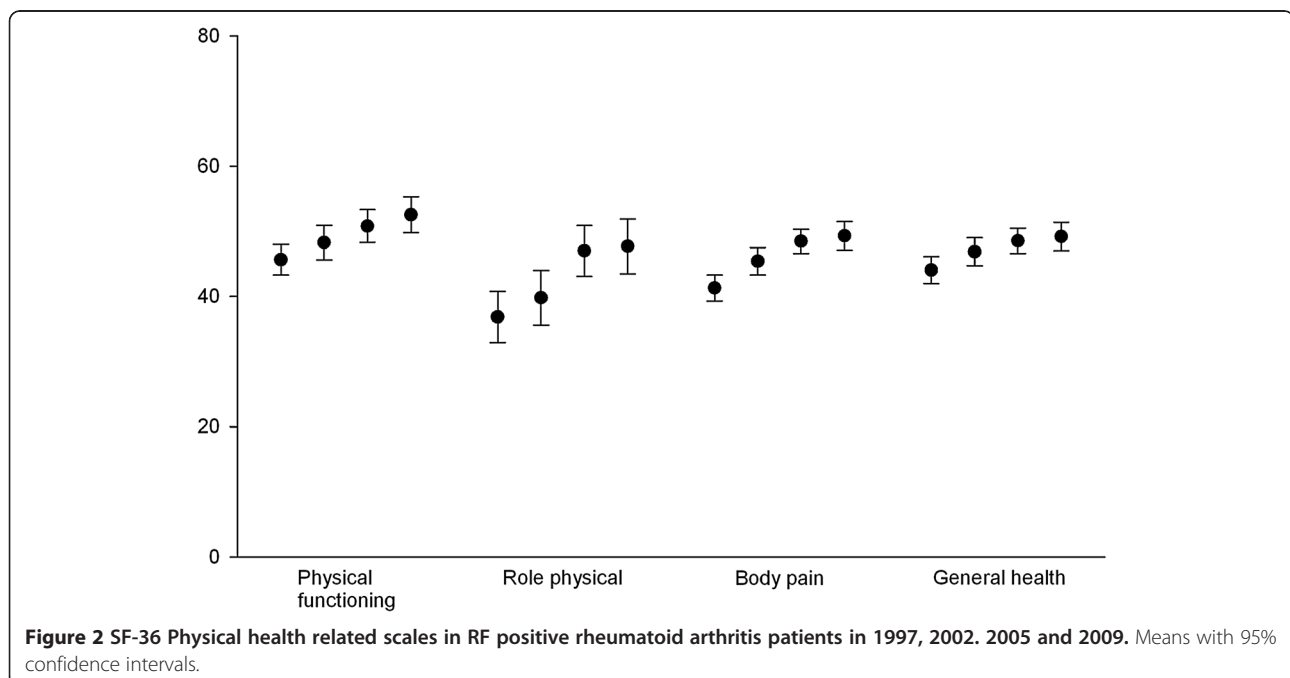
There was no major difference in age between male and female responders in either of the surveys (Table 2). Male patients reported better outcomes with lower point estimates for VAS global, VAS pain and HAQ and higher point estimates for SF-36 PCS and SF-36 MCS (Table 2) in all four surveys (Table 2). In addition, the numerical differences for all these outcomes between mean values in 2009 vs 1997 were greater for men than women, especially for VAS pain (difference 11.5 in men vs. 7.0 in women) and VAS global (difference 9.2 in men vs. 7.1 in women) (Table 2). When examining SF-36 domain scales individually, a similar pattern was seen for all domains, with higher values for male patients than for females at all time points (Table 3). The difference between men and women in physical functioning was consistent in all surveys, with non-overlapping confidence intervals, and increased numerically over time (Table 3). For role physical, bodily pain

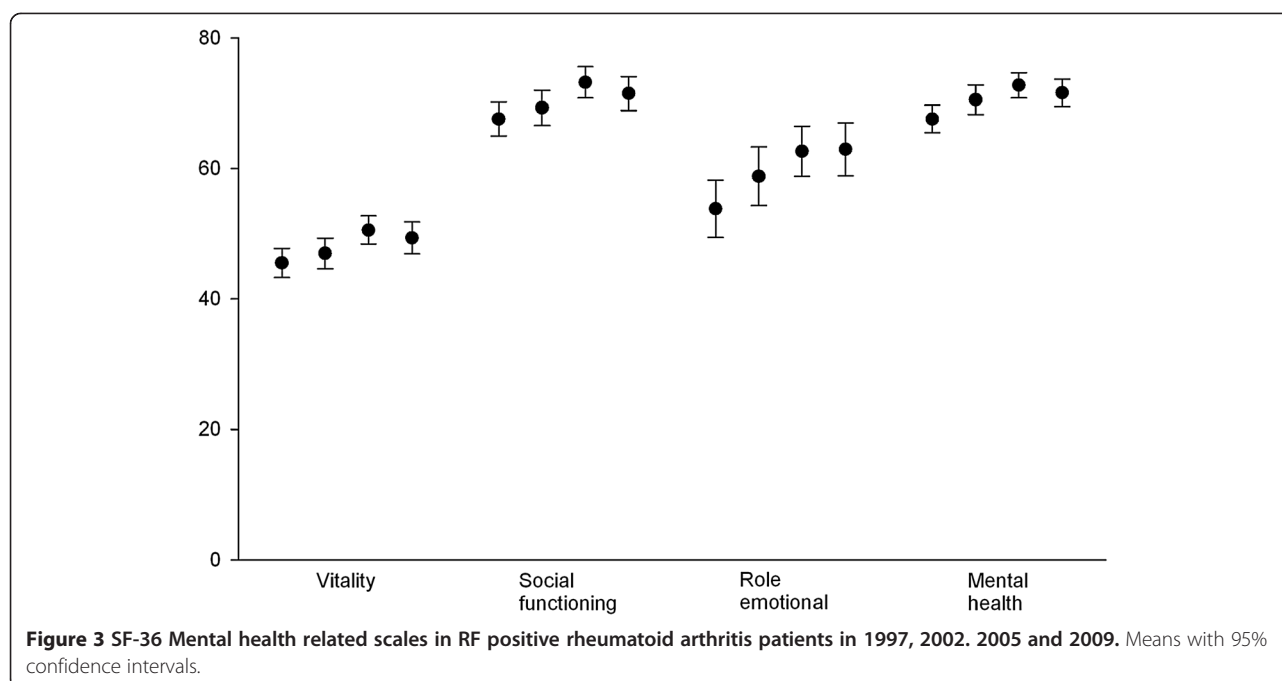
and vitality, similar increasing differences were seen over time, with consistently higher values in men, in particular in the latter two surveys (where the CI were non-overlapping compared to women) (Table 3). The difference in mental component scores was smaller with less change over time (Table 2). In all four surveys, female as well as male patients with RA had lower scores for all SF-36 domains compared to the expected derived from sex-specific population based normative values, with CIs not overlapping zero for all differences, and numerically greater differences for women (data not shown).

Discussion

In this study, we found that treatment with biologics and corticosteroids increased over time, and there was improvement in all patient reported outcomes. Despite similar treatment, male patients reported better outcomes and more improvement, in particular for the impact of pain, compared to female patients.

Several previous studies have reported improved outcomes over time in comparisons of samples of patients with RA evaluated at different time points. Such improvements were observed in patients' clinical status according to disease activity [1,17], functional capacity [17-19], radiographic scores [17,20], and other clinical measures [17]. This most likely at least partly reflects the fact that management and treatment of RA has become more efficient in recent years. Several clinical trials have shown that tight control of disease activity can be achieved in many patients with early RA by optimizing treatment with traditional DMARDs [21,22]. Current guidelines emphasize the importance of a





treat to-target approach [23], with addition of TNF-inhibitors and other biologics in refractory cases or as first line therapy in patients with a severe prognosis [24,25]. Currently, decision making about treatment of RA in the studied population and in other parts of Sweden is largely based on national guidelines [25]. In Malmö, initiation of treatment with biologics is discussed at a scheduled meeting, to ensure uniform indications in clinical practice.

Triple therapy with methotrexate, sulphasalazine and antimalarials was rarely used in this cohort. The low use of triple therapy in 2009 was similar to that observed in 2010 in a cross sectional study from Kristiansand, Norway [26], but lower than that reported from Jyväskylä, Finland, where biologics were less extensively used [26]. The comparison between the cohorts from Kristiansand and Jyväskylä suggested that good functional status

Table 2 Demographics and patient reported outcomes in four surveys of RF positive patients in the Malmö RA population, by sex

	1997		2002		2005		2009	
	WOMEN	MEN	WOMEN	MEN	WOMEN	MEN	WOMEN	MEN
N	497	171	321	117	362	148	326	120
Age	62.0	61.8	64.0	63.6	62.8	63.2	63.8	63.7
Mean (SD)	(14.2)	(13.7)	(14.0)	(12.6)	(14.8)	(12.9)	(13.9)	(12.3)
HAQ	1.4	1.0	1.1	0.6	1.0	0.5	1.0	0.4
Median (IQR)	(0.6-2.0)	(0.1-1.3)	(0.6-1.8)	(0.1-1.4)	(0.5-1.6)	(0.0-1.0)	(0.5-1.6)	(0.0-1.1)
VAS pain	48.3	40.4	43.2	35.7	43.2	34.4	41.3	28.9
	(45.3-51.4)	(35.3-45.6)	(40.4-45.9)	(31.3-40.0)	(40.6-45.8)	(30.2-38.5)	(38.4-44.1)	(24.6-33.1)
VAS global	46.4	40.5	41.6	35.6	43.8	36.6	39.3	31.3
	(43.4-49.3)	(35.5-45.5)	(38.8-44.5)	(31.3-39.8)	(41.2-46.5)	(32.3-40.8)	(36.5-42.2)	(27.0-35.5)
SF-36 PCS	30.8	35.6	32.3	35.8	33.2	38.3	33.8	39.7
	(29.7-32.0)	(33.5-37.7)	(31.1-33.6)	(33.7-38.0)	(32.0-34.4)	(36.3-40.3)	(32.4-35.1)	(37.5-41.9)
SF-36 MCS	44.8	46.9	46.5	47.5	47.1	50.0	46.4	49.2
	(43.2-46.4)	(44.4-49.4)	(44.8-48.1)	(45.1-49.9)	(45.7-48.5)	(47.9-57.1)	(45.0-47.9)	(46.9-51.5)

All values are means (95% CI) unless otherwise noted.
 PCS = Physical component score.
 MCS = Mental component score.

Table 3 SF-36 domain scores in four surveys of RF positive patients in the Malmö RA population, by sex

SF-36 domain	1997		2002		2005		2009	
	WOMEN	MEN	WOMEN	MEN	WOMEN	MEN	WOMEN	MEN
Physical functioning	43.1 (40.4-45.8)	52.8 (48.2-57.4)	46.2 (43.2-49.2)	53.8 (48.6-59.0)	47.0 (44.2-49.9)	60.7 (56.1-65.3)	49.9 (46.8-52.9)	61.9 (56.6-67.2)
Role physical	33.6 (29.1-38.1)	45.7 (37.6-53.8)	36.7 (31.8-41.6)	47.7 (38.7-55.7)	42.6 (38.1-47.2)	58.5 (51.1-65.8)	43.5 (38.6-48.3)	62.2 (54.4-70.1)
Body pain	39.6 (37.4-41.9)	46.1 (41.9-50.3)	44.1 (41.7-46.5)	49.0 (45.2-52.9)	46.4 (44.2-48.6)	53.9 (50.4-57.5)	46.2 (43.8-48.6)	58.3 (53.8-62.7)
General health	42.7 (40.4-45.0)	48.0 (44.0-52.0)	45.4 (42.9-47.9)	50.6 (46.4-54.8)	46.8 (44.5-49.1)	53.1 (49.3-56.9)	47.9 (45.4-50.5)	54.0 (49.7-58.3)
Vitality	44.5 (41.9-47.0)	48.5 (44.1-53.0)	45.7 (43.0-48.4)	50.4 (45.7-55.2)	48.2 (45.7-50.7)	56.2 (52.2-60.3)	47.2 (44.4-49.9)	56.8 (51.7-61.9)
Social functioning	66.1 (63.1-69.2)	71.9 (67.0-76.9)	68.9 (65.8-72.1)	70.4 (65.2-75.6)	70.6 (67.6-73.5)	80.2 (76.4-84.1)	69.9 (66.8-73.0)	77.4 (72.5-82.3)
Role-emotional	51.0 (45.9-56.1)	61.6 (53.1-70.1)	57.7 (52.4-63.0)	61.9 (53.7-70.1)	59.8 (55.1-64.5)	70.3 (63.3-77.3)	59.9 (55.0-64.7)	72.5 (65.0-79.9)
Mental health	66.8 (64.3-62.3)	76.0 (71.9-80.0)	69.7 (67.0-72.3)	77.6 (74.1-81.0)	70.9 (68.6-73.3)	72.9 (68.8-77.0)	70.1 (67.7-72.6)	69.9 (65.8-74.0)

All values are means (95% CI).

may be reached with combination of conventional DMARDs [26].

Improvement of PROs in patients with RA is of major clinical relevance. Not only are reduced disability and improved HRQoL important treatment goals in themselves, but such measures also predict long term outcomes. For example, disability, measured using HAQ, has been shown to predict mortality in several studies [4,27,28].

In the survey performed in 2009, patients with RA had significantly lower scores for physical as well as mental components of HRQoL compared to the expected based on normative data. This suggests that although patients with RA surveyed in 2009 were significantly improved compared to previous investigations in 1997, 2002 and 2005, there is still a major difference in HRQoL compared to the general population. Evidently, there is still need for further improvements in the management of RA.

Influence of gender on various aspects of disease severity has been described in several studies. One retrospective review of a community based sample revealed a higher proportion with erosive disease in male patients, but a greater number of orthopaedic procedures in women [29]. In studies of the Swedish multi-centre early RA BARFOT cohort, women had slightly higher disease activity, measured using the DAS28 score, compared to men already at baseline [30,31], mainly due to higher numbers of tender joints and worse rating of general health [31]. The difference in DAS28 increased over time [31] and was still present after 8 years of follow-up [32]. However, male patients had higher CRP at baseline [30] and there was

no difference in baseline radiographic joint damage or progression of joint damage over time [31], although other studies have suggested that female gender may be an independent predictor of radiographic progression [33]. In the BeST study, a randomized controlled trial of 4 response-driven treatment strategies, female patients were significantly less likely to achieve drug-free remission [34]. PROs, including the HAQ, have also been noted to be worse in female patients compared to males in a large multinational database [35].

One possible explanation for such differences could be lower muscle mass in women. However, in our study, there were major differences in SF-36 scores compared to the general population for both sexes, with greater numerical differences for women.

The results of the present study are compatible with the concept that a higher pain perception in women is part of the explanation for these findings. This may reflect patterns that are not specific for RA, since chronic widespread pain is twice as frequent in women as in men in the general population [36], and female sex may be a predictor of future chronic widespread pain in individuals with regional pain [37]. On the other hand, the relative impact of RA on co-morbidity and mortality may be at least as great in women as in men. In a survey that included part of the population of the present study, treatment with TNF inhibitors was associated with a lower mortality in women, but not in men [28]. These differences are of major clinical relevance, and the underlying mechanisms should be further studied.

The major strengths of this study include the use of a community-based register of patients with RA diagnosis from a well-defined area, with structured assessment using repeated questionnaires during a period of 11 years.

Limitations include the sample size, which affects the precision of some of the outcome estimates, the lack of longitudinal data for analysis of individual cases, and the lack of available objective measures of disease activity due to the study design.

Conclusions

In a well-defined population of patients with RA that received more aggressive treatment over time, we have demonstrated improvement in patient reported outcomes.

Despite similar treatment, male patients reported better outcomes and greater improvements over time, especially for pain and physical function. We suggest that patient reported outcomes should be reported separately in male and female patients with RA.

Competing interests

The authors have no potential conflicts of interest regarding this paper.

Authors' contributions

KH performed the medical record review, participated in the design of the study and the statistical analysis, and drafted the manuscript. LJ and YL participated in the design of the study, developed the questionnaires and participated in the analysis and interpretation of data. JÅN participated in the design of the study and the statistical analysis. CT participated in the design of the study, assisted in the medical record review, participated in the statistical analysis and helped draft the manuscript. All authors read and approved the final manuscript.

Acknowledgements

We thank Lennart Truedsson and Gunnel Henriksson for providing information from the clinical immunology databases on RF tests.

Received: 22 November 2013 Accepted: 17 February 2014

Published: 20 February 2014

References

1. Bergström U, Book C, Lindroth Y, Marsal L, Saxne T, Jacobsson L: **Lower disease activity and disability in Swedish patients with rheumatoid arthritis in 1995 compared with 1978.** *Scand J Rheumatol* 1999, **28**:160–165.
2. Hekmat K, Jacobsson L, Nilsson JÅ, Petersson IF, Robertsson O, Garellick G, Turesson C, et al: **Decrease in the incidence of total hip arthroplasties in patients with rheumatoid arthritis—results from a well-defined population in south Sweden.** *Arthritis Res Ther* 2011, **13**:R67.
3. Myasoedova E, Crowson CS, Turesson C, Gabriel SE, Matteson EL: **Incidence of extraarticular rheumatoid arthritis in Olmsted County, Minnesota, in 1995–2007 versus 1985–1994: a population-based study.** *J Rheumatol* 2011, **38**(6):983–989.
4. Sokka T, Kautiainen H, Pincus T, Tozola S, da Rocha Castelar Pinheiro G, Lazovskis J, Hetland ML, Peets T, Immonen K, Mailliefert JF, Drosos AA, Alten R, Pohl C, Rojkovich B, Bresnihan B, Minnock P, Cazzato M, Bombardieri S, Rexhepi S, Rexhepi M, Andersone D, Stropuviene S, Huisman M, Sierakowski S, Karateev D, Skakic V, Naranjo A, Baecklund E, Henrohn D, Gogus F, et al: **Disparities in rheumatoid arthritis disease activity according to gross domestic product in 25 countries in the QUEST-RA database.** *Ann Rheum Dis* 2009, **68**(11):1666–1672.
5. Pincus T, Callahan LF: **Quantitative measures to assess, monitor and predict morbidity and mortality in rheumatoid arthritis.** *Baillieres Clin Rheumatol* 1992, **6**:161–191.
6. Yazici Y, Bergman M, Pincus T: **Time to score quantitative rheumatoid arthritis measures: 28-Joint Count, Disease Activity Score, Health Assessment Questionnaire (HAQ), Multidimensional HAQ (MDHAQ), and Routine Assessment of Patient Index Data (RAPID) scores.** *J Rheumatol* 2008, **35**:603–609.
7. West E, Jonsson SW: **Health-related quality of life in rheumatoid arthritis in Northern Sweden: a comparison between patients with early RA, patients with medium-term disease and controls, using SF-36.** *Clin Rheumatol* 2005, **24**:117–122.
8. Wallenius M, Skomsvoll JF, Koldingsnes W, Rødevand E, Mikkelsen K, Kaufmann C, Kvien TK: **Comparison of work disability and health-related quality of life between males and females with rheumatoid arthritis below the age of 45 years.** *Scand J Rheumatol* 2009, **38**:178–183.
9. Arnett FC, Edworthy SM, Bloch DA, McShane DJ, Fries JF, Cooper NS, Healey LA, Kaplan SR, Liang MH, Luthra HS: **The American Rheumatism Association 1987 revised criteria for the classification of rheumatoid arthritis.** *Arthritis Rheum* 1988, **31**(3):315–324.
10. Jacobsson L, Lindroth Y, Marsal L, Tejler L: **The Malmo model for private and public rheumatological outpatient care. Cooperation makes it possible to introduce disease modifying treatment quickly.** *Lakartidningen* 2001, **98**(43):4710–4716.
11. Söderlin MK, Lindroth Y, Turesson C, Jacobsson LT: **A more active treatment has profound effects on the health status of rheumatoid arthritis (RA) patients: results from a population-based RA register in Malmö, Sweden, 1997–2005.** *Scand J Rheumatol* 2010, **39**:206–211.
12. Kvien TK, Glennäs A, Knudsrød OG, Smedstad LM, Mowinckel P, Førre O: **The prevalence and severity of rheumatoid arthritis in Oslo. Results from a county register and apopulation survey.** *Scand J Rheumatol.* 1997, **26**:412–418.
13. Ekdahl C, Eberhardt K, Andersson SI, Svensson B: **Assessing disability in patients with rheumatoid arthritis. Use of a Swedish version of the Stanford Health Assessment Questionnaire.** *Scand J Rheumatol.* 1988, **17**:263–271.
14. Ware JE Jr, CD S: **The MOS 36-item short-form health survey (SF-36). I. Conceptual framework and item selection. I. Conceptual framework and item selection.** *Med Care* 1992, **30**:473–483.
15. Sullivan M, Karlsson J: **Swedish manual and interpretation guide.** Gothenburg: Sahlgrenska University Hospital; 1994.
16. Sullivan M, Jan K, John E, Ware E: **The Swedish SF-36 Health Survey- I. Evaluation of data quality, scaling assumptions, reliability and construct validity across general populations in Sweden.** *Soc Sci Med* 1995, **41**(10):p1349–p1358. 10p, 1 Diagram.
17. Pincus T, Sokka T, Kautiainen H: **Patients seen for standard rheumatoid arthritis care have significantly better articular, radiographic, laboratory, and functional status in 2000 than in 1985.** *Arthritis Rheum* 2005, **52**:1009–1019.
18. Krishnan E, Fries JF: **Reduction in long-term functional disability in rheumatoid arthritis from 1977 to 1998: a longitudinal study of 3035 patients.** *Am J Med* 2003, **115**:371–376.
19. Uhlig T, Heiberg T, Mowinckel P, Kvien TK: **Rheumatoid arthritis is milder in the new millennium: health status in patients with rheumatoid arthritis 1994–2004.** *Ann Rheum Dis* 2008, **67**:1710–1715.
20. Sokka T, Kautiainen H, Häkkinen K, Hannonen P: **Radiographic progression is getting milder in patients with early rheumatoid arthritis. Results of 3 cohorts over 5 years.** *J Rheumatol* 2004, **31**:1073–1082.
21. Grigor C, Capell H, Stirling A, McMahon AD, Lock P, Vallance R, Kincaid W, Porter D: **Effect of a treatment strategy of tight control for rheumatoid arthritis (the TICORA study): a single-blind randomised controlled trial.** *Lancet* 2004, **364**(9430):263–269.
22. Verstappen SM, Jacobs JW, van der Veen MJ, Heurkens AH, Schenk Y, ter Borg EJ, Blaauw AA, Bijlsma JW: **Utrecht rheumatoid arthritis cohort study group. Intensive treatment with Methotrexate in early rheumatoid arthritis: aiming for remission. Computer assisted management in early rheumatoid arthritis (CAMERA, an open-label strategy trial).** *Ann Rheum Dis* 2007, **66**(11):1443–1449. Epub 2007 May 22.
23. Smolen JS, Aletaha D, Bijlsma JW, Breedveld FC, Boumpas D, Burmester G, Combe B, Cutolo M, de Wit M, Dougados M, Emery P, Gibofsky A, Gomez-Reino JJ, Haraoui B, Kalden J, Keystone EC, Kvien TK, McInnes I, Martin-Mola E, Montecucco C, Schoels M, Van der Heijde D, T2T Expert Committee: **Treating rheumatoid arthritis to target: recommendations of an international task force.** *Ann Rheum Dis* 2010, **69**:631–637.
24. Smolen JS, Landewé R, Breedveld FC, Buch M, Burmester G, Dougados M, Emery P, Gaujoux-Viala C, Gossec L, Nam J, Ramiro S, Winthrop K, de Wit M, Aletaha D, Betteridge N, Bijlsma JW, Boers M, Buttgerit F, Combe B, Cutolo

- M, Damjanov N, Hazes JM, Kouloumas M, Kvien TK, Mariette X, Pavelka K, van Riel PL, Rubbert-Roth A, Scholte-Voshaar M, Scott DL, et al: **EULAR recommendations for the management of rheumatoid arthritis with synthetic and biological disease-modifying antirheumatic drugs.** *Ann Rheum Dis* 2010, **69**:964–975.
25. Turesson C, Baecklund E, Forsblad'Elia H: **Guidelines for the pharmaceutical management of rheumatoid arthritis.** *Swed Soc Rheumatol* 2011. www.svenskreumatologi.se.
 26. Sokka T, Haugeberg G, Asikainen J, Widding Hansen IJ, Kokko A, Rannio T, Soldal DM, Hannonen P: **Similar clinical outcomes in rheumatoid arthritis with more versus less expensive treatment strategies. Observational data from two rheumatology clinics.** *Clin Exp Rheumatol* 2013, **31**(3):409–414.
 27. Wolfe F, Mitchell DM, Sibley JT, Fries JF, Bloch DA, Williams CA, Spitz PW, Hagen M, Kleinheksel SM, Cathey MA: **The mortality of rheumatoid arthritis.** *Arthritis Rheum* 1994, **37**:481–94.
 28. Jacobsson LT, Turesson C, Nilsson JA, Petersson IF, Lindqvist E, Saxne T, Geborek P: **Treatment with TNF blockers and mortality risk in patients with rheumatoid arthritis.** *Ann Rheum Dis* 2007, **66**:670–5.
 29. Weyand CM, Schmit D, Wagner U, Goronzy JJ: **The influence of sex on the phenotype of rheumatoid arthritis.** *Arthritis Rheum* 1998, **41**:817–822.
 30. Forslind K, Hafström I, Ahlmén M, Svensson B, BARFOT Study Group: **Sex: a major predictor of remission in early rheumatoid arthritis?** *Ann Rheum Dis* 2007, **66**:46–52.
 31. Ahlmén M, Svensson B, Albertsson K, Forslind K, Hafström I, BARFOT Study Group: **Influence of gender on assessments of disease activity and function in early rheumatoid arthritis in relation to radiographic joint damage.** *Ann Rheum Dis* 2010, **69**:230–3.
 32. Hafström I, Vaentina B, Albertsson K, Forslind K, Svensson B: **Joint destruction in early rheumatoid arthritis over 8 years is similar in women and men despite apparently higher disease activity and poorer function in women.** *Ann Rheum Dis* 2011, **70**:709–710.
 33. Syversen SW, Gaarder PI, Goll GL, Ødegård S, Haavardsholm EA, Mowinckel P, van der Heijde D, Landewé R, Kvien TK: **High anti-cyclic citrullinated peptide levels and an algorithm of four variables predict radiographic progression in patients with rheumatoid arthritis: results from a 10-year longitudinal study.** *Ann Rheum Dis* 2008, **67**:212–7.
 34. der Kooij SM, Goekoop-Ruiterman YP, de Vries-Bouwstra JK, Güler-Yüksel M, Zwiderman AH, Kerstens PJ, van der Lubbe PA, de Beus WM, Grillet BA, Roodhooft HK, Huizinga TW, Breedveld FC, Dijkman BA, Allaart CF: **Drug-free remission, functioning and radiographic damage after 4 years of response-driven treatment in patients with recent-onset rheumatoid arthritis.** *Ann Rheum Dis* 2009, **68**:914–21.
 35. Sokka T, Toloza S, Cutolo M, Kautiainen H, Makinen H, Gogus F, Skacic V, Badsha H, Peets T, Baranauskaitė A, Géher P, Ujfalussy I, Skopouli FN, Mavrommati M, Alten R, Pohl C, Sibilia J, Stancati A, Salaffi F, Romanowski W, Zarowny-Wierzbinska D, Henrohn D, Bresnahan B, Minnock P, Knudsen LS, Jacobs JW, Calvo-Alen J, Lazovskis J, Pinheiro Gda R, Karateev D, et al: **Women, men, and rheumatoid arthritis: analyses of disease activity, disease characteristics, and treatments in the QUEST-RA.** *Study Arthritis Res Ther* 2009, **11**:R7. doi:10.1186/ar2591.
 36. Bergman S, Herrström P, Högström K, Petersson IF, Svensson B, Jacobsson LT: **Chronic musculoskeletal pain, prevalence rates, and sociodemographic associations in a Swedish population study.** *J Rheumatol* 2001, **28**:1369–77.
 37. Bergman S, Herrström P, Jacobsson LTH, Petersson IF: **Chronic widespread pain: a three-year followup of pain distribution and risk factors.** *J Rheumatol* 2002, **29**:818–25.

doi:10.1186/1471-2474-15-44

Cite this article as: Hekmat et al.: Changes and sex differences in patient reported outcomes in rheumatoid factor positive RA—results from a community based study. *BMC Musculoskeletal Disorders* 2014 **15**:44.

Submit your next manuscript to BioMed Central and take full advantage of:

- Convenient online submission
- Thorough peer review
- No space constraints or color figure charges
- Immediate publication on acceptance
- Inclusion in PubMed, CAS, Scopus and Google Scholar
- Research which is freely available for redistribution

Submit your manuscript at
www.biomedcentral.com/submit

