



Association between Serum Tissue Inhibitor of Matrix Metalloproteinase-1 Levels and Mortality in Patients with Severe Brain Trauma Injury

Leonardo Lorente^{1*}, María M. Martín², Patricia López², Luis Ramos³, José Blanquer⁴, Juan J. Cáceres⁵, Jordi Solé-Violán⁶, Jorge Solera⁷, Judith Cabrera¹, Mónica Argueso⁴, Raquel Ortiz³, María L. Mora¹, Santiago Lubillo², Alejandro Jiménez⁸, Juan M. Borreguero-León⁹, Agustín González⁹, Josune Orbe¹⁰, José A. Rodríguez¹⁰, José A. Páramo¹⁰

1 Intensive Care Unit, Hospital Universitario de Canarias, Santa Cruz de Tenerife, Spain, **2** Intensive Care Unit, Hospital Universitario Nuestra Señora de Candelaria, Santa Cruz de Tenerife, Spain, **3** Intensive Care Unit, Hospital General La Palma, La Palma, Spain, **4** Intensive Care Unit, Hospital Clínico Universitario de Valencia, Fundación INCLIVA, Valencia, Spain, **5** Intensive Care Unit, Hospital Insular, Las Palmas de Gran Canaria, Spain, **6** Intensive Care Unit, Hospital Universitario Dr. Negrín, Las Palmas de Gran Canaria, Spain, **7** Department of Anesthesiology and Reanimation, Hospital Universitario de Canarias, Santa Cruz de Tenerife, Spain, **8** Research Unit, Hospital Universitario de Canarias, Santa Cruz de Tenerife, Spain, **9** Laboratory Department, Hospital Universitario de Canarias, Santa Cruz de Tenerife, Spain, **10** Atherosclerosis Research Laboratory, CIMA-University of Navarra, Pamplona, Spain

Abstract

Objective: Matrix metalloproteinases (MMPs) and tissue inhibitors of matrix metalloproteinases (TIMPs) play a role in neuroinflammation after brain trauma injury (TBI). Previous studies with small sample size have reported higher circulating MMP-2 and MMP-9 levels in patients with TBI, but no association between those levels and mortality. Thus, the aim of this study was to determine whether serum TIMP-1 and MMP-9 levels are associated with mortality in patients with severe TBI.

Methods: This was a multicenter, observational and prospective study carried out in six Spanish Intensive Care Units. Patients with severe TBI defined as Glasgow Coma Scale (GCS) lower than 9 were included, while those with Injury Severity Score (ISS) in non-cranial aspects higher than 9 were excluded. Serum levels of TIMP-1, MMP-9 and tumor necrosis factor (TNF)-alpha, and plasma levels of tissue factor (TF) and plasminogen activator inhibitor (PAI)-1 plasma were measured in 100 patients with severe TBI at admission. Endpoint was 30-day mortality.

Results: Non-surviving TBI patients (n = 27) showed higher serum TIMP-1 levels than survivor ones (n = 73). We did not find differences in MMP-9 serum levels. Logistic regression analysis showed that serum TIMP-1 levels were associated 30-day mortality (OR = 1.01; 95% CI = 1.001–1.013; P = 0.03). Survival analysis showed that patients with serum TIMP-1 higher than 220 ng/mL presented increased 30-day mortality than patients with lower levels (Chi-square = 5.50; P = 0.02). The area under the curve (AUC) for TIMP-1 as predictor of 30-day mortality was 0.73 (95% CI = 0.624–0.844; P < 0.001). An association between TIMP-1 levels and APACHE-II score, TNF- alpha and TF was found.

Conclusions: The most relevant and new findings of our study, the largest series reporting data on TIMP-1 and MMP-9 levels in patients with severe TBI, were that serum TIMP-1 levels were associated with TBI mortality and could be used as a prognostic biomarker of mortality in TBI patients.

Citation: Lorente L, Martín MM, López P, Ramos L, Blanquer J, et al. (2014) Association between Serum Tissue Inhibitor of Matrix Metalloproteinase-1 Levels and Mortality in Patients with Severe Brain Trauma Injury. PLoS ONE 9(4): e94370. doi:10.1371/journal.pone.0094370

Editor: Nikos K. Karamanos, University of Patras, Greece

Received: November 27, 2013; **Accepted:** March 15, 2014; **Published:** April 11, 2014

Copyright: © 2014 Lorente et al. This is an open-access article distributed under the terms of the Creative Commons Attribution License, which permits unrestricted use, distribution, and reproduction in any medium, provided the original author and source are credited.

Funding: This study was supported, in part, by grants from Instituto de Salud Carlos III (I3SNSINT-11-063 and I3SNS-INT-12-087) (Madrid, Spain) and co-financed with Fondo Europeo de Desarrollo Regional (FEDER), CIMA (University of Navarra, Pamplona, Spain), and the ERANET-NEURON program from Ministerio de Economía y Competitividad (grant agreement No. 2011-1334). The funders had no role in study design, data collection and analysis, decision to publish, or preparation of the manuscript.

Competing Interests: The authors have declared that no competing interests exist.

* E-mail: lorentemartin@msn.com

Introduction

Traumatic brain injury (TBI) is an important cause of disability, mortality and cost [1]. Primary injury refers to the initial physical forces applied to brain during the impact. Secondary injury occurs over a period of hours or days following the initial traumatic injury, and is developed by different mediators. During the

secondary injury there is an increase in the permeability of blood-brain-barrier (BBB) and consequently appears brain edema [2–5].

Matrix metalloproteinases (MMPs) are a family of zinc-containing endoproteinases implicated in degradation and remodelling of the extracellular matrix (ECM). They can be classified broadly by substrate specificity into: collagenases (MMP-1, -8 and -13), gelatinases (MMP-2 and -9), stromelysins (MMP-3, -10, -11),

elastases (MMP-7 and -12) and membranetype (MT-MMPs, MMP-14, -15, -16 and -17). The regulation of its activity is complex and occurs at several levels [6], such as transcriptional (MMP gene expression in cells) that is influenced by numerous stimulatory and suppressive factors that influence multiple signalling pathways, as TNF- α , interleukin-1 β , transforming growth factor (TGF)- β , TGF- α ; posttranscriptional (stability of MMP transcripts in cells) that is influenced by glucocorticoids and TGF- β ; translational (release of MMP from cells) that is influenced by plasmin and thrombin; and post-translational (activation of MMPs after the release) that is influenced by oxidative stress, nitrosidative stress, phosphorylation, proteolysis and tissue inhibitors of matrix metalloproteinases (TIMPs). We and others have shown that MMPs have a role in normal physiological functions such as the menstrual cycle, morphogenesis, tissue remodelling and angiogenesis, and in diseases with abnormal ECM turnover, such as arthritis, sepsis, tumour invasion, aneurysm formation and atherosclerosis [7–11]. In addition, MMPs play a role in central nervous system and are involved in the mechanisms associated with neuroinflammation [12–14]. Several studies have immunolocalized MMP in the human brain, specifically in astrocytes, microglia and neurons [14]. The findings of several animal studies suggested that MMP are involved in the disruption of the BBB, edema formation and inflammation after central nervous system trauma [15–17].

Previous studies with small sample size (fewer than 50 patients) have reported higher circulating levels of MMP-2 and MMP-9 in patients with TBI than in healthy control subjects [18–24]. Also there has been found higher levels of MMP-2 and MMP-9 in brain extracellular fluid (ECF), indicating that both local and systemic trauma-induced upregulation of MMPs play an important role in the pathophysiology of TBI [15,18]. However, an association between MMP levels, severity and mortality of patients with TBI was not reported. In a previous study by our team, we found higher serum TIMP-1 and lower serum MMP-9 levels in non-surviving than in surviving severe septic patients [9]. Thus, the objective of this study was to determine whether serum levels of TIMP-1 and MMP-9 are associated with severity and mortality of patients with severe TBI.

Methods

Design and Subjects

This is a multicenter, observational, prospective study carried out in 6 Intensive Care Units of Spain. The study was approved by the Institutional Review Board of the 6 participant hospitals: Hospital Universitario de Canarias (La Laguna, Santa Cruz de Tenerife, Spain), Hospital Universitario Nuestra Señora de Candelaria (Santa Cruz de Tenerife, Spain), Hospital General de La Palma (La Palma, Spain), Hospital Clínico Universitario de Valencia (Valencia, Spain), Hospital Insular (Las Palmas de Gran Canaria, Spain), Hospital Universitario Dr. Negrín (Las Palmas de Gran Canaria, Spain). The written informed consent from the patients or from their legal guardians was obtained.

We included 100 patients with severe TBI. Severity of brain trauma injury was classified according to Glasgow Coma Scale (GCS) [25], and severe TBI was defined as GCS lower than 9 points.

Exclusion criteria were: age less than 18 years, pregnancy, inflammatory or malignant disease and Injury Severity Score (ISS) [26] in non-cranial aspects higher than 9 points.

Variables recorded

The following variables were recorded for each patient: sex, age, ISS, GCS, lactic acid, platelets, international normalized ratio (INR), activated partial thromboplastin time (aPTT), fibrinogen, Acute Physiology and Chronic Health Evaluation II (APACHE II) score [27] and brain lesion according to the Marshall computer tomography (CT) classification [28].

End-point

The end-point was 30-day mortality.

Blood sample collection

Blood samples in 100 patients with severe TBI were collected in the day of TBI to measure serum levels of TIMP-1 and MMP-9. We also measured tumor necrosis factor (TNF)-alpha serum levels to assess inflammation, and plasma levels of tissue factor (TF) to assess coagulation and plasminogen activator inhibitor (PAI)-1 as a fibrinolytic marker.

Determination of TIMP-1, MMP-9 and TNF-alpha serum levels

Serum separator tubes were used to determine serum TIMP-1 and MMP-9 levels. Venous blood samples were taken and centrifuged within 30 minutes at 1000 g for 15 min, and the serum was removed and frozen at -80°C until measurement.

TIMP-1 and MMP-9 assays were performed at the Atherosclerosis Research Laboratory of CIMA-University of Navarra (Pamplona, Spain) and were assayed by specific ELISAs (Quantikine, R&D Systems, Abingdon, United Kingdom) according to the manufacturer's instructions with a serum dilution of 1:100 and 1:80 respectively. This test has been validated by other systems in serum samples [29]. The interassay coefficients of variation (CV) were $<8\%$ ($n=20$) and detection limit for the assays were 0.15 ng/mL and 0.31 ng/mL respectively.

TNF-alpha serum levels were measured in the Laboratory Department of the Hospital Universitario de Canarias (La Laguna, Santa Cruz de Tenerife, Spain) by a solid-phase, chemiluminiscents immunometrics assays kit (Immulite, Siemens Healthcare Diagnostics Products, Llanberis, United Kingdom); and the interassays coefficient of variation (CV) was $<6.5\%$ ($n=20$) and detection limit for the assay was 1.7 pg/mL.

Determination of TF and PAI-1 plasma levels

Venous blood samples were collected in citrate collected plasma tubes and centrifuged within 30 minutes at 1000^*g for 15 min. The plasma was removed and frozen at -80°C until measurement. TF and PAI-1 assays were performed at the Laboratory Department of the Hospital Universitario de Canarias (La Laguna, Santa Cruz de Tenerife, Spain). TF levels were assayed by specific ELISA (Imubind Tissue Factor ELISATM, American Diagnostica, Inc, Stanford, CT, USA). PAI-1 antigen levels were assayed by specific ELISA (Imubind Plasma PAI-1 ElisaTM, American Diagnostica, Inc, Stanford, CT, USA). The interassay coefficients of variation (CV) of TF and PAI-1 assays were $<8\%$ ($n=20$) and $<5\%$ ($n=20$) respectively, and detection limits for the assays were 10 pg/mL and 1 ng/mL respectively.

Statistical Methods

Continuous variables are reported as medians and interquartile ranges. Categorical variables are reported as frequencies and percentages. Comparisons of continuous variables between groups were carried out using Wilcoxon-Mann-Whitney test. Comparisons between groups on categorical variables were carried out with

Table 1. Baseline clinical and biochemical characteristics of survivor and non-survivor patients.

	Survivors (n = 73)	Non-survivors (n = 27)	P value
Gender female - n (%)	12 (16.4)	11 (40.7)	0.02
Age (years) - median (p 25-75)	47 (32-67)	66 (45-76)	<0.001
Computer tomography classification - n (%)			0.002
Type 1	0	0	
Type 2	21 (28.8)	3 (11.1)	
Type 3	13 (17.8)	5 (18.5)	
Type 4	10 (13.7)	6 (22.2)	
Type 5	26 (35.6)	5 (18.5)	
Type 6	3 (4.1)	8 (29.6)	
Temperature (°C) - median (p 25-75)	37. (35.6-37.3)	36.0 (35.0-37.0)	0.12
Sodium (mEq/L)- median (p 25-75)	139 (138-142)	141 (135-149)	0.19
Glycemia (g/dL) - median (p 25-75)	139 (120-163)	161 (142-189)	0.08
Leukocytes - median*10 ³ /mm ³ (p 25-75)	14.7 (10.2-19.3)	18.3 (10.7-23.9)	0.46
PaO ₂ (mmHg) - median (p 25-75)	151 (116-217)	141 (104-186)	0.34
PaO ₂ /FIO ₂ ratio - median (p 25-75)	336 (242-407)	190 (154-316)	0.11
Bilirubin (mg/dl) - median (p 25-75)	0.50 (0.40-0.87)	0.75 (0.53-1.05)	0.045
Creatinine (mg/dl) - median (p 25-75)	0.80 (0.70-0.90)	0.95 (0.70-1.10)	0.44
Hemoglobin (g/dL) - median (p 25-75)	11.4 (10.4-13.0)	11.1 (9.4-12.3)	0.87
Glasgow Coma Scale score - median (p 25-75)	7 (6-8)	3 (3-6)	<0.00171
Lactic acid (mmol/L) median (p 25-75)	1.70 (1.23-2.50)	1.90 (1.15-4.55)	0.16
Platelets - median*10 ³ /mm ³ (p 25-75)	182 (143-252)	215 (139-264)	0.48
INR - median (p 25-75)	1.03 (0.92-1.15)	1.22 (1.01-1.67)	0.15
aPTT (seconds) - median (p 25-75)	28 (25-32)	26 (25-31)	0.86
Fibrinogen (mg/dl) - median (p 25-75)	350 (282-444)	376 (246-560)	0.32
APACHE-II score - median (p 25-75)	19 (17-23)	26 (25-32)	<0.001
ISS - median (p 25-75)	25 (25-32)	25 (25-27)	0.24
ICP (mmHg) - median (p 25-75)	15 (14-20)	20 (12-30)	0.27
CPP (mmHg) - median (p 25-75)	68 (57-70)	60 (54-69)	0.46
TIMP-1 (ng/mL) - median (p 25-75)	219 (177-258)	302 (221-474)	<0.001
MMP-9 (ng/mL) - median (p 25-75)	760 (428-1113)	948 (357-1180)	0.62
TNF-alpha (pg/mL) - median (p 25-75)	9.72 (7.88-13.40)	13.65 (8.35-22.75)	0.12
Tissue Factor (pg/mL) - median (p 25-75)	189 (129-247)	194 (169-295)	0.18
PAI-1 (ng/mL) - median (p 25-75)	64 (32-89)	65 (39-99)	0.99

P 25-75 = percentile 25th-75th; PaO₂ = pressure of arterial oxygen/fraction inspired oxygen; FIO₂ = pressure of arterial oxygen/fraction inspired oxygen; ISS = Injury Severity Score; INR = international normalized ratio; aPTT = activated partial thromboplastin time; APACHE II = Acute Physiology and Chronic Health Evaluation; ICP = intracranial pressure; CPP = cerebral perfusion pressure; TIMP = tissue inhibitor of matrix metalloproteinase; MMP = matrix metalloproteinase; TNF = tumor necrosis factor; PAI = plasminogen activator inhibitor
doi:10.1371/journal.pone.0094370.t001

chi-square test. Multiple binomial logistic regression analysis was applied to prediction of 30-day mortality. As number of events was 27 exits, we constructed two multiple binomial logistic regression models with only three predictor variables in each to avoid an over fitting effect that may lead to choose a final model of order slightly higher order than required [30]. In the first model were included serum TIMP-1 levels, APACHE-II score and CT classification. Previously to include the variable CT classification in the regression analysis, it was recoded according with the risk of death observed in the bivariate analysis as low (CT types 2 and 5) and high risk (CT types 3, 4 and 6) of death. In the second model were included serum TIMP-1 levels, GCS and age. Odds Ratio and 95% confidence intervals were calculated as measurement of the clinical impact of the predictor variables. Receiver operating

characteristic (ROC) analysis was carried out to determine the goodness-of-fit of the of serum TIMP-1 levels to predict 30-day mortality. Kaplan-Meier analysis of survival at 30 days and comparisons by log-rank test were carried out using serum TIMP-1 levels lower/higher than 220 ng/mL as the independent variable and survival at 30 days as the dependent variable. The association between continuous variables was carried out using Spearman's rank correlation coefficient, and Bonferroni correction was applied to control for the multiple testing problem. A *P* value of less than 0.05 was considered statistically significant. Statistical analyses were performed with SPSS 17.0 (SPSS Inc., Chicago, IL, USA) and NCSS 2000 (Kaysville, Utah) and LogXact 4.1, (Cytel Co., Cambridge, MA).

Table 2. Multiple binomial logistic regression analysis of variables to predict 30-day mortality.

Variable	Odds Ratio	95% Confidence Interval	P
First Model			
TIMP-1 levels	1.01	1.001–1.0127	0.03
APACHE-II score	1.31	1.147–1.499	<0.001
Computer tomography classification (reference category: low risk of death)	7.65	1.976–29.616	0.003
Second Model			
TIMP-1 levels	1.01	1.003–1.015	0.002
GCS score	0.57	0.403–0.798	0.001
Age	1.10	1.044–1.149	<0.001

TIMP = tissue inhibitor of matrix metalloproteinase; APACHE II = Acute Physiology and Chronic Health Evaluation; GCS Glasgow Coma Scale
doi:10.1371/journal.pone.0094370.t002

Results

Non-surviving TBI patients (n = 27) showed lower GCS, higher age and female rate, and APACHE-II score than survivors (n = 73). We found statistically significant differences in CT classification between non-surviving and surviving patients. In addition, non-surviving patients showed higher TIMP-1 levels than surviving. There were not significant differences between non-surviving and surviving patients in circulating levels of MMP-9 and TNF-alpha, TF and PAI-1 (Table 1).

Multiple binomial logistic regression analysis showed that serum TIMP-1 could predict 30-day mortality (OR = 1.01; 95% CI = 1.001–1.013; P = 0.03) controlling for APACHE-II and CT classification (Table 2). We found a mortality rate of 3/24 (12.5%) in patients with CT classification type 2, 5/18 (27.8%) with type 3, 6/16 (37.5%) with type 4, 5/31 (16.1%) with type 5 and 8/11 (72.7%) with type 6. Previously to include the variable CT classification in the regression analysis, it was recoded according with the risk of death observed in the bivariate analysis as low and high risk of death. As low risk of death were included patients with CT classification types 2 and 5, with a mortality rate of 8/55 (14.5%). As high risk of death were included patients with CT

classification types 3, 4 and 6, with a mortality rate of 19/45 (42.2%).

Multiple binomial logistic regression analysis also showed that serum TIMP-1 could predict 30-day mortality (OR = 1.01; 95% CI = 1.003–1.015; P = 0.002) controlling for GCS and age (Table 2).

Survival analysis showed that patients with serum TIMP-1 higher than 220 ng/mL presented higher 30-day mortality than patients with lower levels (Chi-square: 5.50; P = 0.02) (Figure 1).

The area under the curve (AUC) for TIMP-1 as predictor of 30-day mortality was 0.73 (95% CI = 0.624–0.844; P < 0.001) (Figure 2).

We found an association between TIMP-1 and APACHE-II (rho = 0.33; P = 0.001), TF (rho = 0.43; P < 0.001) and TNF-alpha (rho = 0.43; P < 0.001) (Table 3).

Discussion

To our knowledge, this study includes the largest series reporting data on MMP levels in patients with severe TBI. The most relevant and new findings of our study were the following: a) non-surviving TBI patients had higher serum TIMP-1 levels than

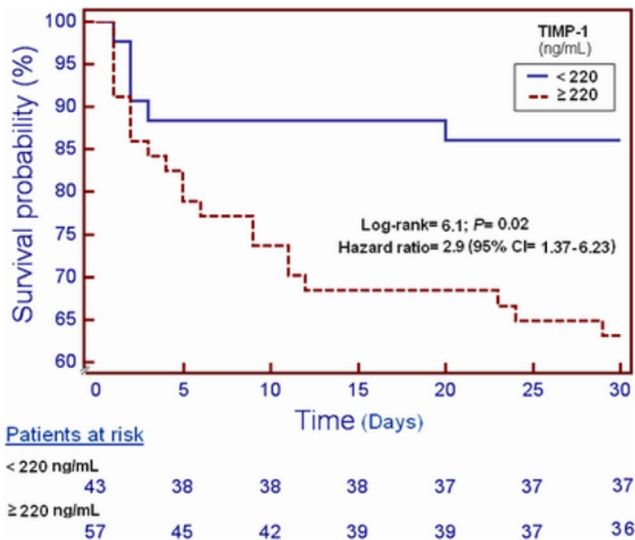


Figure 1. Survival curves at 30 days using 220 ng/mL of TIMP-1 serum levels as cut-off.
doi:10.1371/journal.pone.0094370.g001

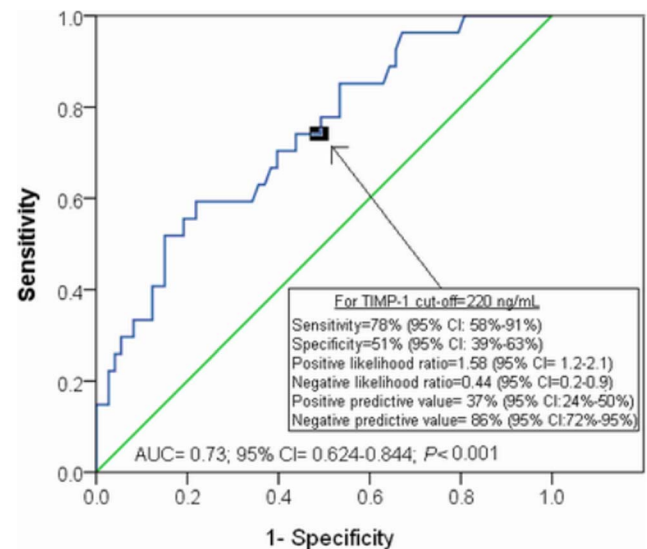


Figure 2. Receiver operation characteristic analysis using TIMP-1 serum levels as predictor of mortality at 30 days.
doi:10.1371/journal.pone.0094370.g002

Table 3. Correlation between serum TIMP-1 levels and other baseline clinical and biochemical characteristics.

	TIMP-1 (ng/mL)
APACHE-II score	$\rho = 0.33$; $P = 0.001$
GCS score	$\rho = -0.22$; $P = 0.03$
Lactic acid (mmol/L)	$\rho = 0.24$; $P = 0.02$
TNF-alpha (pg/mL)	$\rho = 0.53$; $P < 0.001$
Tissue Factor (pg/mL)	$\rho = 0.43$; $P < 0.001$
PAI-1 (ng/mL)	$\rho = 0.06$; $P = 0.71$
Platelets (cells/mm ³)	$\rho = -0.05$; $P = 0.61$
INR	$\rho = 0.10$; $P = 0.35$
aPTT (seconds)	$\rho = 0.08$; $P = 0.49$
Fibrinogen (mg/dL)	$\rho = 0.07$; $P = 0.59$
MMP-9 (ng/mL)	$\rho = 0.02$; $P = 0.88$

TIMP = tissue inhibitor of matrix metalloproteinase; GCS = Glasgow Coma Scale; TNF = tumor necrosis factor; PAI = plasminogen activator inhibitor; INR = international normalized ratio; aPTT = activated partial thromboplastin time; MMP = matrix metalloproteinase. Bonferroni correction to control the multiple testing problem ($0.05/11 = 0.004$) was used. Only *P*-values lower than 0.004 were considered statistically significant.
doi:10.1371/journal.pone.0094370.t003

surviving ones, b) there was an association between serum TIMP-1 levels and TBI severity and mortality, c) serum TIMP-1 levels could be used as a prognostic biomarker of mortality in TBI patients.

Previous studies with small sample size (fewer than 50 patients) have reported higher circulating levels of MMP-2 and MMP-9 in patients with TBI than in healthy control subjects [18–24]. However, they did not report differences in circulating MMP levels between nonsurviving and surviving patients. We show, for the first time, that non-surviving TBI patients showed higher serum TIMP-1 levels than survivors at day 1; however, we did not find significant differences in MMP-9 serum levels. Another new finding of our study was the association between serum TIMP-1 levels and mortality in logistic regression analysis. Also, as previously reported, we found that APACHE-II [31,32] and CT classification [33] were associated with mortality. Interestingly, we found for the first time that TIMP-1 levels could be used as biomarker of mortality according to the ROC analysis. Another new finding of our study was the association between TIMP-1 levels and TBI severity assessed by APACHE-II score.

The physiological role of higher TIMP-1 levels in non-survivors compared to survivors TBI patients is still unknown. It is possible that the increase in TIMP-1 levels in non-survivors may be a consequence of increased MMP-2 and MMP-9 levels in non-survivors during the initial phase of TBI in order to maintain the balance between MMPs and TIMPs activity. However, we have not determined MMP-2 levels to test this possible explanation and we only found a trend, not statistically significant, of higher MMP-9 levels in non-surviving than in surviving TBI patients. In one study by Jaworski with TBI rats was found an increase of TIMP-1 mRNA expression in astrocytes and of TIMP-2 mRNA expression in microglia and neurons, while the expression of TIMP-3 and TIMP-4 was unaltered [34]. In one study by Tejima et al in TBI mice was found lower MMP-9 levels and lower brain lesion volumes in mice overexpressing TIMP-1 compared to wild-type mice [35]. In some rodent models of brain injury, the treatment with MMP-1 inhibitor has attenuated MMP-2 and MMP-9 activity, barrier disruption and edema formation [15–17].

MMPs play a role in the neuroinflammation [12–14]. During the secondary injury there is an increase in the permeability of BBB and consequently appears brain edema [2–5]. The findings of

several animal studies suggested that MMP are involved in the disruption of the BBB and edema formation after central nervous system trauma [15–17]. Interestingly, there has been reported that circulating TIMP-1 levels are associated with brain edema in ischemic stroke patients [36].

There has been described that coagulopathy after TBI is frequent and represents a powerful predictor related to prognosis [37–39]. This coagulopathy could present as hypo- and hypercoagulable state, and result in a variable degree of secondary injury via subsequent ischemic and hemorrhagic lesioning. The proposed underlying mechanisms may comprise the release of TF and activation of hyperfibrinolysis. Interestingly, we found for the first time an association between circulating TIMP-1 and TF levels. However, we did not find significant differences between surviving and non-surviving patients in coagulation data as platelet count, INR, aPTT, fibrinogen and PAI-1. The association between circulating TIMP-1 and TF levels could contribute in a procoagulant state and thus, an increase of secondary injury via subsequent ischemic lesioning.

TBI may result in a systemic inflammatory response syndrome (SIRS) due to the synthesis and leaking to the circulation of pro-inflammatory cytokines [40,41]. This SRIS may cause capillary thrombosis, a single or multiple organ failure and, finally, contribute to mortality. Interestingly, we found an association between TIMP-1 and TNF-alpha levels; however, we did not find differences between surviving and non-surviving patients in TNFalpha levels. As previously mentioned, we also found an association between TIMP-1 serum levels and TF plasma levels, and this may contribute to capillary thrombosis.

Taken together, these data suggest that TIMP-1 levels could play a role in pathophysiology of TBI. It is possible that increased serum TIMP-1 levels in non-survivors TBI patients is not the cause of death in TBI patients, but only a biomarker associated with mortality.

From a therapeutic perspective, the development of modulators of MMP activity could be used as a new class of drugs for the treatment of patients with severe TBI for neuroprotection [15–17].

The strengths of our study are that it was a multicenter study (which increases the external applicability of results to other similar units) and the larger sample size in relation to previous studies (that allowed us to increase the accuracy of the analysed

parameters and report for the first time an association between serum TIMP-1 levels and mortality). However, some limitations of our study should be recognized. First, we did not perform the analysis of other MMPs and TIMPs; and this could be interesting to describe serum levels of other MMPs and TIMPs, and ratios between them. Second, the measure of other inflammatory cytokines would be desirable in order to better evaluate the relationship between MMPs and inflammatory response in this set of patients. Third, we did not report data about the evolution of TIMPs and MMPs on the time to describe the evolution in non-surviving and surviving TBI patients. Fourth, we have not determined MMPs and TIMPs in cerebrospinal fluid (CSF) to analyze whether there are an association between serum and CSF levels. This could be interesting due to in a study by Grossetete et al were found higher MMP-9 levels in CSF (but not in plasma), higher MMP-2 in plasma (but not in CSF), and higher MMP-3 latent form in CSF (but not active form and neither in plasma) in TBI patients compared to control subjects [22]. Fifth, the determination of MMPs was carried out by ELISA, and could be interesting to determine its active form by gelatine zymography [42]. Sixth, the specificity of serum TIMP-1 levels to predict mortality is low, and this restricts the application as biomarker to

discard survivor patients. Thus, additional studies are needed to confirm the finding of our study.

Conclusions

The most relevant and new findings of our study, the largest series reporting data on TIMP-1 and MMP-9 levels in patients with severe TBI, were that serum TIMP-1 levels were associated with TBI mortality and could be used as a prognostic biomarker of mortality in TBI patients.

Acknowledgments

Ethical Adherence: Institutional Review Boards of every hospital approved this study. Written informed consent from the patients or from the family members was obtained.

Author Contributions

Conceived and designed the experiments: LL. Performed the experiments: LL MMM PL LR JB JJC JSV JS JC MA RO MLM SL JMBL AG JO JAR JAP. Analyzed the data: LL AJ. Wrote the paper: LL.

References

- Brain Trauma Foundation; American Association of Neurological Surgeons; Congress of Neurological Surgeons (2007) Guidelines for the management of severe traumatic brain injury. *J Neurotrauma* 24 Suppl 1:S1–106.
- Lucas SM, Rothwell NJ, Gibson RM (2006) The role of inflammation in CNS injury and disease. *Br J Pharmacol* 147 Suppl 1:S232–240.
- Cortez SC, McIntosh TK, Noble LJ (1989) Experimental fluid percussion brain injury: vascular disruption and neuronal and glial alterations. *Brain Res* 482:271–282.
- Fukuda K, Tanno H, Okimura Y, Nakamura M, Yamaura A (1995) The blood-brain barrier disruption to circulating proteins in the early period after fluid percussion brain injury in rats. *J Neurotrauma* 12:315–324.
- Marmarou A, Signoretti S, Fatouros PP, Portella G, Aygok GA, et al. (2006) Predominance of cellular edema in traumatic brain swelling in patients with severe head injuries. *J Neurosurg* 104:720–730.
- Sternlicht MD, Werb Z (2001) How matrix metalloproteinases regulate cell behavior. *Annu Rev Cell Dev Biol* 17:463–516.
- Brinckerhoff CE, Matrisian LM (2002) Matrix metalloproteinases: a tail of a frog that became a prince. *Nat Rev Mol Cell Biol* 3:207–214.
- Birkedal-Hansen H, Moore WG, Bodden MK, Windsor LJ, Birkedal-Hansen B, et al. (1993) Matrix metalloproteinases: a review. *Crit Rev Oral Biol Med* 4:197–250.
- Lorente L, Martin MM, Labarta L, Díaz C, Solé-Violán J, et al. (2009) Matrix metalloproteinase-9, -10, and tissue inhibitor of matrix metalloproteinases-1 blood levels as biomarkers of severity and mortality in sepsis. *Crit Care* 13:R158.
- Martínez de Lizarrondo S, Roncal C, Calvayrac O, Rodríguez C, Varo N, et al. (2012) Synergistic effect of thrombin and CD40 ligand on endothelial matrix metalloproteinase-10 expression and microparticle generation in vitro and in vivo. *Arterioscler Thromb Vasc Biol* 32:1477–1487.
- Lorente L, Martín M, Plasencia F, Solé-Violán J, Blanquer J, et al. (2013) The 372 T/C genetic polymorphism of TIMP-1 is associated with serum levels of TIMP-1 and survival in patients with severe sepsis. *Crit Care* 17:R94.
- Rosenberg GA (2002) Matrix metalloproteinases in neuroinflammation. *Glia* 39:279–291.
- Lo EH, Wang X, Cuzner ML (2002) Extracellular proteolysis in brain injury and inflammation: role for plasminogen activators and matrix metalloproteinases. *J Neurosci Res* 69:1–9.
- Zhang H, Adwanikar H, Werb Z, Noble-Haeusslein LJ (2010) Matrix metalloproteinases and neurotrauma: evolving roles in injury and reparative processes. *Neuroscientist* 16:156–170.
- Yamaguchi M, Jadhav V, Obenaus A, Colohan A, Zhang JH (2007) Matrix metalloproteinase inhibition attenuates brain edema in an in vivo model of surgically-induced brain injury. *Neurosurgery* 61:1067–1075.
- Shigemori Y, Katayama Y, Mori T, Maeda T, Kawamata T (2006) Matrix metalloproteinase-9 is associated with blood-brain barrier opening and brain edema formation after cortical contusion in rats. *Acta Neurochir Suppl* 96:130–133.
- Sifringer M, Stefovská V, Zentner I, Hansen B, Stepulak A, et al. (2007) The role of matrix metalloproteinases in infant traumatic brain injury. *Neurobiol Dis* 25:526–35.
- Vajtr D, Benada O, Kukacka J, Prusa R, Houstava L, et al. (2009) Correlation of ultrastructural changes of endothelial cells and astrocytes occurring during blood brain barrier damage after traumatic brain injury with biochemical markers of BBB leakage and inflammatory response. *Physiol Res* 58:263–268.
- Vilalta A, Sahuquillo J, Rosell A, Poca MA, Riveiro M, et al. (2008) Moderate and severe traumatic brain injury induce early overexpression of systemic and brain gelatinases. *Intensive Care Med* 34:1384–1392.
- Suehiro E, Fujisawa H, Akimura T, Ishihara H, Kajiwara K, et al. (2004) Increased matrix metalloproteinase-9 in blood in association with activation of interleukin-6 after traumatic brain injury: influence of hypothermic therapy. *J Neurotrauma* 21:1706–1711.
- Gong D, Hao M, Liu L, Liu C, Dong J, et al. (2012) Prognostic relevance of circulating endothelial progenitor cells for severe traumatic brain injury. *Brain Inj* 26:291–297.
- Grossetete M, Phelps J, Arko L, Yonas H, Rosenberg GA (2009) Elevation of matrix metalloproteinases 3 and 9 in cerebrospinal fluid and blood in patients with severe traumatic brain injury. *Neurosurgery* 65:702–708.
- Kolar M, Pacht J, Tomasova H, Haninec P (2008) Dynamics of matrix-metalloproteinase 9 after brain trauma—results of a pilot study. *Acta Neurochir Suppl* 102:373–376.
- Copin JC, Rebetez MM, Turck N, Robin X, Sanchez JC, et al. (2012) Matrix metalloproteinase 9 and cellular fibronectin plasma concentrations are predictors of the composite endpoint of length of stay and death in the intensive care unit after severe traumatic brain injury. *Scand J Trauma Resusc Emerg Med* 20:83.
- Teasdale G, Jennett B (1974) Assessment of coma and impaired consciousness. A practical scale. *Lancet* 2:81–84.
- Baker SP, O'Neill B, Haddon W, Long WB (1974) The Injury Severity Score: a Method for Describing Patients With Multiple Injuries and Evaluating Emergency Care. *J Trauma* 14:187–196.
- Knaus WA, Draper EA, Wagner DP, Zimmerman JE (1985) APACHE II: a severity of disease classification system. *Crit Care Med* 13:818–829.
- Marshall LF, Marshall SB, Klauber MR, Van Berkum Clark M, Eisenberg H, et al. (1992) The diagnosis of head injury requires a classification based on computed axial tomography. *J Neurotrauma* 9 Suppl 1:S287–292.
- Boeker KH, Haberkorn CI, Michels D, Flemming P, Manns MP, et al. (2002) Diagnostic potential of circulating TIMP-1 and MMP-2 as markers of liver fibrosis in patients with chronic hepatitis C. *Clin Chim Acta* 316:71–81.
- Kleinbaum DG, Kupper LL, Muller KE, Nizam A (1998) Polynomial regression. In: Kleinbaum DG, Kupper LL, Muller KE, Nizam A, editors. *Applied Regression Analysis and Other Multivariable Methods*. Duxbury Press. pp. 281–316.
- Zagara G, Scaravilli P, Mastorgio P, Seveso M (1991) Validation of a prognostic system in severe brain-injured patients. *J Neurosurg Sci* 35:77–81.
- Kane NM, Curry SH, Rowlands CA, Manara AR, Lewis T, et al. (1996) ventral potentials—neurophysiological tools for predicting emergence and early outcome from traumatic coma. *Intensive Care Med* 22:39–46.
- Kim YJ (2011): A systematic review of factors contributing to outcomes in patients with traumatic brain injury. *J Clin Nurs* 20:1518–1532.
- Jaworski DM (2000) Differential regulation of tissue inhibitor of metalloproteinase mRNA expression in response to intracranial injury. *Glia* 30:199–208.
- Tejima E, Guo S, Murata Y, Arai K, Lok J, et al. (2009) Neuroprotective effects of overexpressing tissue inhibitor of metalloproteinase TIMP-1. *J Neurotrauma* 26:1935–41.

36. Rodríguez JA, Sobrino T, Orbe J, Purroy A, Martínez-Vila E, et al. (2013) ProMetalloproteinase-10 is associated with brain damage and clinical outcome in acute ischemic stroke. *J Thromb Haemost* 11:1464–1173.
37. Maegele M (2013) Coagulopathy after traumatic brain injury: incidence, pathogenesis, and treatment options. *Transfusion* 53 Suppl 1:28S–37S.
38. Zhang J, Jiang R, Liu L, Watkins T, Zhang F, et al. (2012) Traumatic brain injury-associated coagulopathy. *J Neurotrauma* 29:2597–2605.
39. Laroche M, Kutcher ME, Huang MC, Cohen MJ, Manley GT (2012) Coagulopathy after traumatic brain injury. *Neurosurgery* 70:1334–1345.
40. Lu J, Goh SJ, Tng PY, Deng YY, Ling EA, et al. (2009) Systemic inflammatory response following acute traumatic brain injury. *Front Biosci (Landmark Ed)* 14:3795–3813.
41. Schaller B (2002) Craniocerebral trauma—new pathophysiological and therapeutic viewpoints. *Swiss Surg* 8:145–158.
42. Remacle AG, Noël A, Duggan C, McDermott E, O'Higgins N, et al. (1998). Assay of matrix metalloproteinases types 1, 2, 3 and 9 in breast cancer. *Br J Cancer* 77:926–931.