

Establishing a Anti- Icing Program

City of Mishawaka, Indiana

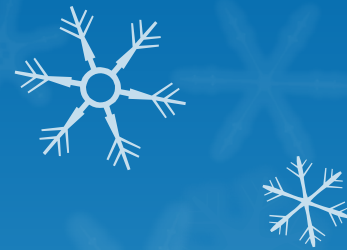


Introduction

- ❑ Tim Ryan
- ❑ Street Commissioner and Director of Central Services for the City Of Mishawaka
- ❑ I have been employed with the Street Department for for 29 years
- ❑ Became Street Commissioner in 2014 after serving 14 years as Assistant Street Commissioner.

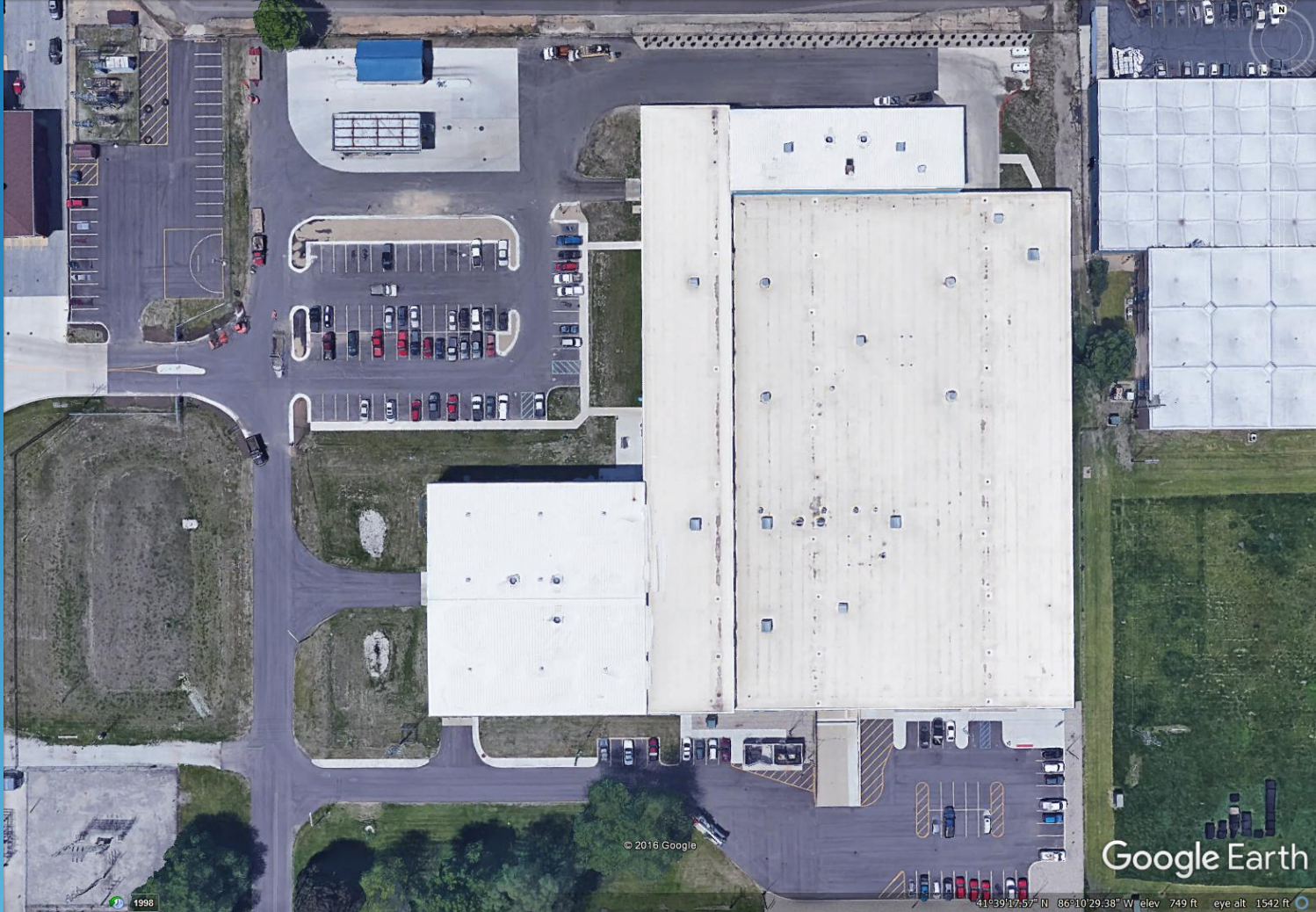






















Brine Operations - 13

Brine Operations - 13

START

STOP

Salt Tank Setpoints

Lower Upper

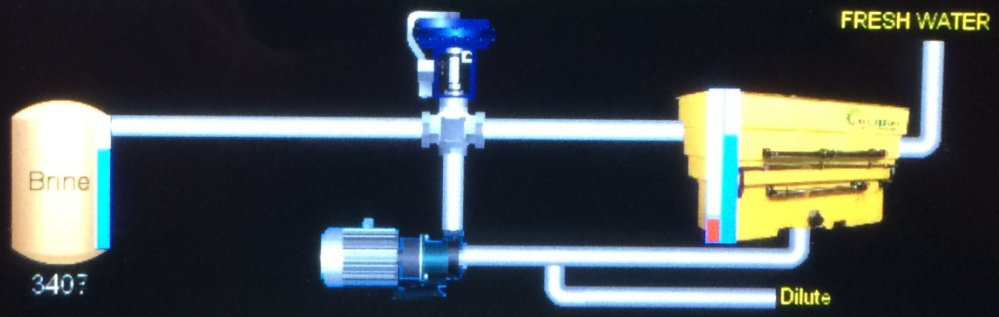
Salinity Reading (%)

Lower Upper

Batch Size

Remaining

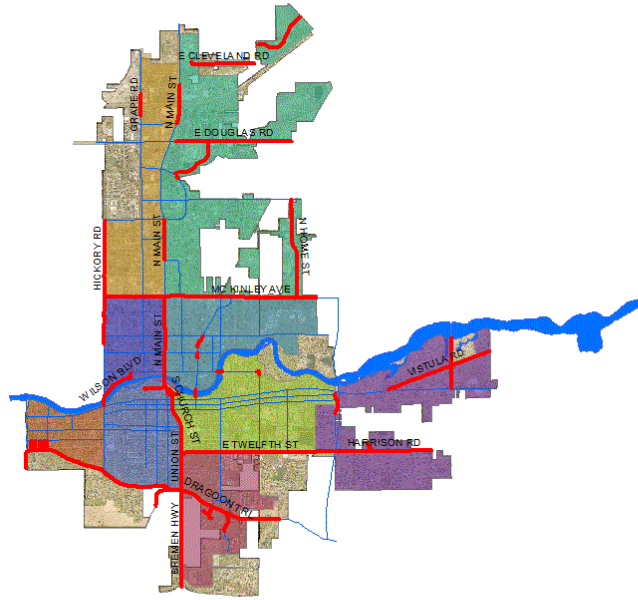
0













Recommendations for Establishing an Anti-icing Program

- ❑ Don' t go through this process. It was a long and frustrating process to get to where we are today.
- ❑ Make the commitment!
- ❑ Do your research on products and vendors.
- ❑ Look at what your future needs will be, not what you need today.
- ❑ Look at up coming projects. See what needs you may have and what can included in the projects budget(Creative Financing)

Recommendations for Establishing an Anti-icing Program

- ❑ The number one recommendation I would make is training. We struggled to get rid of the old mentality of throwing salt at the roads. Once the employees saw the product working it was easier to get them to buy in and added validity to the program.
- ❑ Questions?