



ORIGINAL ARTICLE

Global and regional patterns of longitudinal strain in screening for chemotherapy-induced cardiotoxicity[☆]



Guilherme Portugal^{a,*}, Luísa Moura Branco^a, Ana Galrinho^a, Miguel Mota Carmo^a, Ana Teresa Timóteo^a, Joana Feliciano^a, João Abreu^a, Sónia Duarte Oliveira^a, Lurdes Batarda^b, Rui Cruz Ferreira^a

^a Serviço de Cardiologia, Hospital de Santa Marta, Centro Hospitalar Lisboa Central, EPE, Lisboa, Portugal

^b Serviço de Oncologia Médica, Hospital de Santo António dos Capuchos, Centro Hospitalar de Lisboa Central, EPE, Lisboa, Portugal

Received 10 February 2016; accepted 22 June 2016

Available online 27 December 2016

KEYWORDS

Global longitudinal strain;
Cardiotoxicity;
Trastuzumab

Abstract

Introduction: Serial echocardiographic assessment of left ventricular ejection fraction (LVEF) is the gold standard in screening for chemotherapy-induced cardiotoxicity (CIC). Measurement of myocardial deformation using speckle tracking enables more detailed assessment of myocardial contractility. The aim of this study was to determine the relationship between global and regional longitudinal strain and CIC.

Methods: This was a prospective study of 158 breast cancer patients undergoing chemotherapy with anthracyclines with or without adjuvant trastuzumab who underwent serial monitoring by transthoracic echocardiography with assessment of myocardial deformation. CIC was defined as a decrease in LVEF to <53%. Global longitudinal strain (GLS) was estimated using EchoPAC BT12 software on a GE Vivid E9 cardiac ultrasound system. Patients were classified according to the 2015 ASE/EACVI criteria as having impaired myocardial deformation when GLS was reduced (less negative), with a cutoff of -18%.

Results: During a mean follow-up of 5.4 months (1-48 months), the incidence of CIC was 18.9%. A decrease in GLS was observed during follow-up for the entire cohort (baseline GLS $-20.1 \pm 3.5\%$ vs. $-18.7 \pm 3.4\%$ at last follow-up assessment, $p=0.001$). A total of 97 patients (61.4%) were observed to have impaired myocardial deformation ($GLS \geq 18\%$) at some point during follow-up. This decrease was more significant in patients who eventually developed CIC ($GLS -17.2 \pm 2.5\%$,

[☆] Please cite this article as: Portugal G, Moura Branco L, Galrinho A, et al. Importância da deformação longitudinal na deteção da cardiotoxicidade induzida por quimioterapia e na identificação de padrões específicos de afetação segmentar. Rev Port Cardiol. 2017;36:9–15.

* Corresponding author.

E-mail address: gfportugal@gmail.com (G. Portugal).

PALAVRAS-CHAVE

Deformação longitudinal global; Cardiotoxicidade; Trastuzumab

$p=0.02$). On analysis of regional strain, impaired contractility was observed in the septal (6 out of 6) and anterior (2 out of 3) segments. Multivariate logistic regression showed that patients who developed impaired longitudinal strain had a 4.9-fold increased risk of developing CIC (odds ratio 4.88, confidence interval 1.32-18.0, $p=0.017$).

Conclusions: Worsening of myocardial deformation as assessed by speckle tracking is common in breast cancer patients undergoing chemotherapy, with predominantly septal and anterior wall involvement. Impaired myocardial deformation was independently associated with increased incidence of CIC.

© 2016 Sociedade Portuguesa de Cardiologia. Published by Elsevier España, S.L.U. All rights reserved.

Importância da deformação longitudinal na deteção da cardiotoxicidade induzida por quimioterapia e na identificação de padrões específicos de afetação segmentar

Resumo

Introdução e objetivos: A avaliação seriada da fração de ejeção ventricular esquerda (FEVE) é o padrão de referência na vigilância da cardiotoxicidade induzida por quimioterapia (CIT). A avaliação da deformação longitudinal com técnicas de *speckle tracking* permite uma avaliação mais detalhada da contractilidade miocárdica. O objetivo deste estudo foi avaliar a relação entre a deformação longitudinal global (GLS) e regional e a incidência de CIT.

Métodos: Foram incluídos 158 pacientes num estudo prospetivo observacional de doentes com neoplasia da mama submetidos a quimioterapia com antraciclina, com ou sem terapêutica adjuvante com trastuzumab. Foi efetuada uma monitorização ecocardiográfica seriada de parâmetros de função sistólica e diastólica, incluindo a avaliação da deformação miocárdica longitudinal bidimensional. A incidência de CIT foi definida como uma diminuição da FEVE para valor $< 53\%$, de acordo com o documento de consenso da Sociedade Europeia de Imagiologia Cardiovascular (EACVI). Os doentes foram classificados como tendo deterioração da contractilidade miocárdica para um valor de GLS menos negativo que -18% , de acordo com os critérios da EACVI.

Resultados: Durante um período de seguimento médio de 5,4 meses (1-48 meses), a incidência de CIT foi de $18,9\%$. Na população global observou-se uma deterioração significativa do GLS durante o tratamento com quimioterapia ($-20,1 \pm 3,5\%$ versus $18,7 \pm 3,4\%$, $p=0,001$), com compromisso do GLS detetado durante em algum período do seguimento em $61,4\%$ dos doentes. Esta deterioração foi mais marcada no subgrupo de doentes com CIT (GLS: $-17,2 \pm 2,5\%$, $p=0,02$). Na análise regional da deformação longitudinal, verificou-se compromisso da contractilidade envolvendo preferencialmente os segmentos septais (seis em seis) e parede anterior (dois em três). Por regressão logística multivariada, o compromisso do GLS esteve independentemente associado ao desenvolvimento de CIT (odds ratio 4,88, IC 1,32-18,0, $p=0,017$).

Conclusões: O compromisso da deformação longitudinal é frequente em doentes submetidos a quimioterapia e mostrou um padrão de distribuição predominante a nível septal e anterior. A degradação da GLS foi um preditor independente de CIT.

© 2016 Sociedade Portuguesa de Cardiologia. Publicado por Elsevier España, S.L.U. Todos os direitos reservados.

Introduction

Anthracyclines, and more recently trastuzumab (a monoclonal antibody that interferes with the HER2 receptor), are routinely used in the treatment of breast cancer.^{1,2} However, it was soon recognized that these drugs can lead to left ventricular (LV) systolic dysfunction as assessed by LV ejection fraction (LVEF) and to heart failure.³⁻⁵ Chemotherapy-induced cardiotoxicity (CIC) is one of the main determinants of prognosis in breast cancer survivors,^{6,7} but only a small

subgroup of patients exposed to chemotherapy agents will develop CIC, which has a reported incidence of 3-12% for anthracycline therapy alone and up to 28% when combined with trastuzumab.

Effective strategies are therefore required for the screening and early detection of CIC, focusing particularly on a better understanding of the mechanisms responsible for deterioration of myocardial contractility.

Speckle tracking, now available in a range of echocardiographic systems, enables assessment of the different

components of myocardial deformation – longitudinal, radial and circumferential strain. Decreased global longitudinal strain (GLS) in patients with preserved LVEF is associated with adverse cardiovascular events in a variety of clinical contexts.^{8,9}

The aim of this study was to analyze changes in myocardial contractility as assessed by regional and global longitudinal strain in patients undergoing chemotherapy for breast cancer. In addition, we sought to establish whether changes in myocardial contractility before a fall in LVEF could predict the development of CIC.

Methods

Study design

This was a prospective observational study of patients with breast cancer undergoing chemotherapy with anthracyclines (≥ 240 mg/m² of doxorubicin or equivalent), with or without adjuvant immunotherapy, between June 2011 and October 2015. All patients referred by the hospital's oncology department for echocardiographic assessment prior to beginning chemotherapy and monitored during treatment were included. Those with a personal history of heart disease or with significant findings on initial echocardiography (LVEF <53%, LV end-diastolic diameter >60 mm, LV wall thickness >12 mm, moderate or severe valve regurgitation, or congenital heart disease) were excluded. Demographic data, current anticancer therapy and echocardiographic parameters were recorded.

Echocardiographic acquisition and processing

Initial and follow-up echocardiographic assessments were performed according to the clinical indications established by the oncologist. GE Vivid 9 or Vivid 7 ultrasound systems were used to acquire parasternal long- and short-axis views, as well as apical 4-, 2- and 3-chamber views. A subgroup of patients (n=99, 63.1%) also underwent tissue Doppler study. LVEF was calculated by Simpson's biplane method.

Longitudinal strain was analyzed off-line following acquisition of apical 3-, 2- and 4-chamber views, using a semi-automatic algorithm in the EchoPAC BT12 software, based on regional assessment of 18 segments, the mean of which was used to calculate GLS. Inter- and intra-observer variability in assessing longitudinal strain in patients treated with anthracyclines has been reported previously.¹⁰

Definitions

CIC was defined as LVEF <53% in accordance with the criteria of the 2014 expert consensus for multimodality imaging evaluation of adult patients undergoing chemotherapy of the American Society of Echocardiography (ASE) and the European Association of Cardiovascular Imaging (EACVI).¹¹ GLS was defined as reduced (less negative) using the cutoff of -18% recommended by the ASE/EACVI for EchoPAC BT12 software.¹²

Statistical analysis

Changes in LVEF and global and regional longitudinal strain were analyzed by comparing baseline with follow-up echocardiograms. When more than one follow-up echocardiogram had been performed, the values corresponding to the greatest variation in the study variables were used.

Logistic regression analysis was used to determine predictors of CIC, with the incidence of CIC during follow-up as the dependent variable and including demographic characteristics, baseline echocardiogram, anticancer therapy, and the presence or absence of impaired GLS during follow-up prior to the development of CIC as independent variables. Variables with values of $p < 0.05$ on univariate analysis were included in the multivariate model.

Continuous variables with normal distribution were compared using the Student's t test, while categorical variables were compared using the chi-square test. A value of $p < 0.05$ was considered statistically significant.

Results

Population characteristics and echocardiographic follow-up

A total of 165 women were assessed, seven of whom were excluded due to LV dysfunction on baseline echocardiography; the final study population thus comprised 158 patients. Mean follow-up was 5.4 months (1-48), with a total follow-up time of 71.1 person years. All patients had undergone at least two echocardiographic studies, with a mean of 3.6 exams at a mean interval of 107 days.

Mean age was 54.6 ± 12.9 years; 33% of patients underwent immunotherapy and 16.5% received radiotherapy. Baseline echocardiographic variables are shown in Table 1. There were no deaths from cardiovascular cause.

Incidence of chemotherapy-induced cardiotoxicity during follow-up

The incidence of CIC as defined above during follow-up in the study population was 18.9% (Figure 1), and was higher

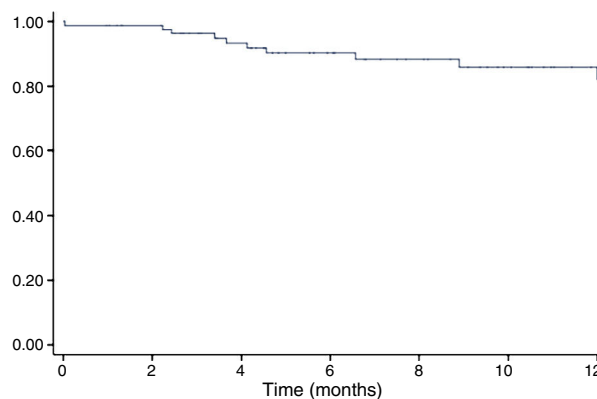


Figure 1 Kaplan-Meier curve of survival free of chemotherapy-induced cardiotoxicity.

Table 1 Baseline characteristics.

Age (years \pm SD)	54.6 \pm 12.9	
Female, n (%)	158 (100)	
Chemotherapy with anthracyclines, n (%)	158 (100)	
Immunotherapy, n (%)	52 (33)	
Radiotherapy, n (%)	26 (16.5)	
Follow-up (months)	5.4 (1-48)	
Death from cancer	4 (2.5)	
Echocardiographic variables	Mean	SD
LV end-diastolic diameter (mm)	48.5	6.3
LV end-systolic diameter (mm)	29.0	5.6
Fractional shortening (%)	40.1	9.2
LVEF (%)	62.0	8.4
LV end-diastolic volume (ml)	75.6	23
LV end-systolic volume (ml)	28.6	14.6
Transmitral E-wave velocity (cm/s)	75.7	20.6
Transmitral A-wave velocity (cm/s)	79.3	19.2
E/A ratio	0.99	0.33
Septal S' (cm/s)	7.47	1.77
Lateral S' (cm/s)	8.89	2.45
Tricuspid S' (cm/s)	12.5	2.5
E/e' ratio	9.2	2.9

LV: left ventricular; LVEF: left ventricular ejection fraction; SD: standard deviation.

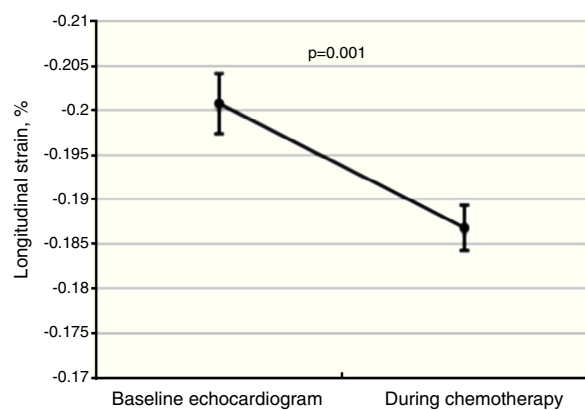


Figure 2 Changes in global longitudinal strain (GLS) between baseline and follow-up echocardiograms for the total study population, showing worsening GLS during chemotherapy. The central line represents mean GLS, and the error bars represent the 95% confidence interval for one standard deviation.

in the subgroup with adjuvant trastuzumab therapy (38.1% vs. 11.7%, $p=0.001$).

Global longitudinal strain

There was a significant worsening of GLS during follow-up, decreasing from a baseline value of $-20.1\pm 3.5\%$ to $-18.7\pm 3.4\%$ (Figure 2, $p=0.001$ on the Student's *t* test), and was more marked among patients who developed CIC ($-17.2\pm 2.5\%$, $p=0.02$). Impaired myocardial contractility was observed in a significant proportion of the total study population, with 61.4% of patients ($n=97$) presenting GLS below the cutoff of -18% .

Table 2 Development of chemotherapy-induced cardiotoxicity and impaired longitudinal strain during follow-up.

	Without CIC	With CIC	Total
Preserved longitudinal strain	58 (36.7)	3 (1.9)	61 (38.6)
Impaired longitudinal strain	70 (44.3)	27 (17.1)	97 (61.4)
Total	128 (81.0)	30 (18.9)	158 (100)

CIC: chemotherapy-induced cardiotoxicity.

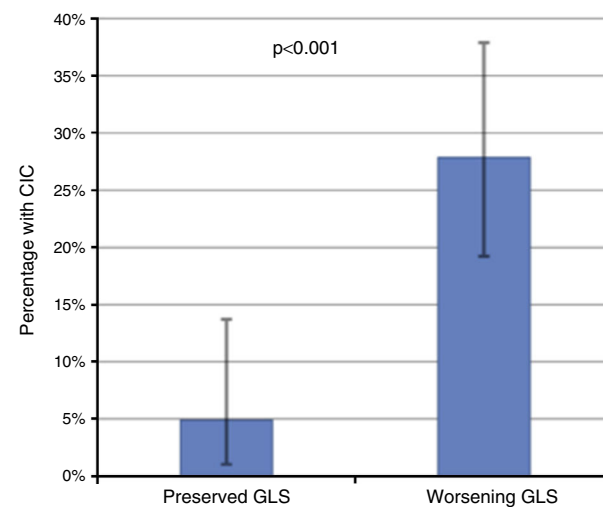


Figure 3 Incidence of chemotherapy-induced cardiotoxicity (CIC) according to the presence of decreased global longitudinal strain (GLS), showing that patients with worsening GLS during follow-up had a significantly higher incidence of CIC. The error bars represent the 95% confidence interval calculated by the binomial test.

Of these 97 patients, 27 eventually developed CIC, while only three of the 61 patients with preserved GLS developed CIC (27.8% vs. 4.9%, $p<0.001$ on the chi-square test; Table 2, Figure 3). The mean period between evidence of worsening GLS and development of CIC was 101 days. Logistic regression analysis showed that worsening GLS was associated with a higher incidence of CIC (odds ratio [OR] 7.45, confidence interval [CI] 2.15-25.8, $p=0.002$); in multivariate analysis, the two independent variables associated with CIC were immunotherapy (OR 3.4, CI 1.21-8.2, $p=0.018$) and GLS below the cutoff of -18% (OR 4.88, CI 1.32-18.0, $p=0.017$) (Table 3). Subgroup analysis excluding patients undergoing immunotherapy showed similar results for the risk of developing CIC in the presence of worsening GLS (OR 6.24, CI 1.32-29.3, $p=0.020$).

Regional longitudinal strain

Overall, regional longitudinal strain was determined in 93.1% of the segments analyzed, with lower success rates in the laterobasal (86.1%) and posterobasal (81.4%) segments. Compared to baseline echocardiograms, exams performed

Table 3 Univariate and multivariate analysis of predictors of chemotherapy-induced cardiotoxicity.

	Univariate analysis	p	Multivariate analysis	p
Age	OR 1.01 (CI 0.95-1.05)	0.832		
Trastuzumab	OR 4.33 (CI 1.87-10.1)	0.001	OR 3.14 (CI 1.21-8.2)	0.018
Radiotherapy	OR 2.47 (CI 0.90-6.82)	0.079		
End-diastolic volume	OR 0.99 (CI 0.97-1.02)	0.665		
Baseline LVEF	OR 0.01 (CI 0.00-8.96)	0.186		
Development of impaired GLS (>-18%)	OR 7.45 (CI 2.15-5.83)	0.002	OR 4.88 (CI 1.32-8.0)	0.017

CI: confidence interval; CIC: chemotherapy-induced cardiotoxicity; GLS: global longitudinal strain; LVEF: left ventricular ejection fraction; OR: odds ratio.

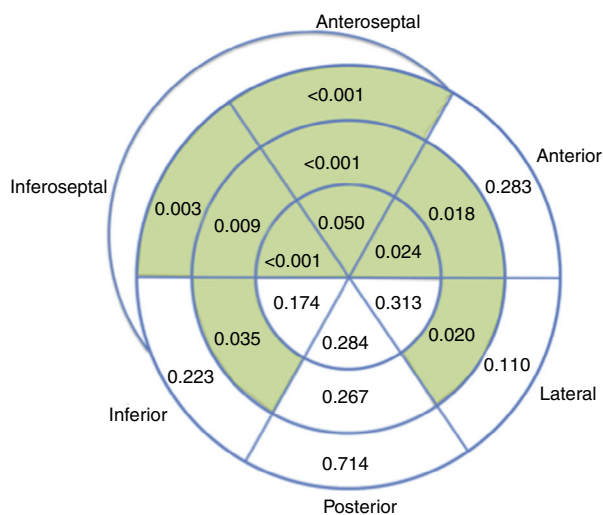


Figure 4 Worsening of regional longitudinal strain under chemotherapy with anthracyclines. The segments shown in green presented significant worsening of regional strain by the Student's t test.

during chemotherapy revealed impaired regional longitudinal strain in 10 out of 18 LV segments (Figure 4).

Discussion

The main finding in this prospective study on echocardiographic assessment of longitudinal strain in breast cancer patients undergoing chemotherapy was an independent association between worsening GLS with preserved LVEF and the incidence of CIC. Patients with impaired GLS (below -18%) presented a high incidence of CIC (28.7%). Although preserved GLS did not preclude the development of CIC in our population, the finding does indicate a more favorable prognosis in terms of cardiovascular function, as these patients had a 4.9-fold lower probability of developing CIC.

As far as the authors are aware, this is the largest study to date assessing longitudinal strain in CIC.¹³ Our patient population was similar to those assessed in previous studies of cardiotoxicity in breast cancer patients,^{14,15} suggesting that our data could be used to identify patients at high risk of developing CIC.

A worsening of GLS was observed during chemotherapy with anthracyclines, with most patients presenting at least one echocardiographic exam showing GLS below the normal limit. This suggests the presence of subclinical myocardial dysfunction, even in patients who do not go on to develop CIC, as reported in other studies using tissue Doppler.^{16,17}

Analysis of regional longitudinal strain appears feasible in this population, as it was successful in 93.1% of the segments assessed, a mean of 17 out of 18 segments per patient. Progressive worsening of regional strain was observed during chemotherapy, mainly involving the septal (6 out of 6) and anterior segments, sparing the posterior wall and most segments of the other walls. The preferential involvement of the septum has been reported previously in echocardiographic studies with visual assessment of regional wall motion,¹⁸ as well as in cardiac magnetic resonance imaging.¹⁹ This finding is also in agreement with a previous study that reported decreased longitudinal strain in septal, anteroseptal, anterolateral and apical segments in 27 patients undergoing chemotherapy with anthracyclines.¹⁵ While it needs to be confirmed in further studies, recognition of this pattern of septal and anterior involvement may prove useful when screening for chemotherapy-related cardiotoxicity.

The interest in longitudinal strain imaging and other techniques for the early detection of subclinical injury in this context is heightened by the fact that up to 58% of patients with CIC do not recover normal systolic function.⁵ Although multicenter studies^{20,21} and a recent meta-analysis¹³ support the use of speckle tracking echocardiography in screening for cardiotoxicity in patients treated with anthracyclines and trastuzumab, it is still not used routinely in clinical practice. The results of our study are in line with those of previous studies, and highlight the value of longitudinal strain for both assessment of subclinical cardiotoxicity and identification of patients at high risk of developing CIC.

The present study has certain limitations. The fact that the echocardiographic exams were performed based on clinical indication rather than at previously determined intervals may have led to gaps in the data. Mean follow-up was around six months, the usual period for echocardiographic monitoring during treatment with cardiotoxic drugs, but the duration of follow-up varied widely, ranging between one month and 48 months. For this reason, development of CIC at any point during follow-up was used as the

event of interest, rather than at three or six months, since this is the relevant event in clinical practice, irrespective of the time elapsed between chemotherapy and CIC. Nevertheless, this approach may have led to underestimation of the incidence of CIC in patients with shorter follow-up in whom exposure to anthracyclines may not have reached a sufficiently high cumulative dose to cause LV dysfunction.

A further limitation is the fact that a third of patients presented HER2-positive breast cancer and were under adjuvant therapy with trastuzumab, which means the results cannot be generalized to those under anthracycline therapy alone. However, subgroup analysis of those under anthracycline monotherapy revealed similar results to those of the total population. Finally, no information was available on any pharmacological treatment used to prevent or treat cardiotoxicity, and this should be borne in mind when interpreting the results.

Conclusions

Myocardial contractility, as assessed by GLS, worsened in most patients undergoing chemotherapy for breast cancer, with predominantly septal and anterior wall involvement. Impaired GLS in patients with preserved LVEF was independently associated with increased incidence of CIC, and can thus be considered an earlier predictor of cardiotoxicity than merely calculating LVEF, as usually recommended.

Ethical disclosures

Protection of human and animal subjects. The authors declare that no experiments were performed on humans or animals for this study.

Confidentiality of data. The authors declare that they have followed the protocols of their work center on the publication of patient data.

Right to privacy and informed consent. The authors declare that no patient data appear in this article.

Conflicts of interest

The authors have no conflicts of interest to declare.

References

1. Tan C, Tasaka H, Yu KP, et al. Daunomycin, an antitumor antibiotic, in the treatment of neoplastic disease. Clinical evaluation with special reference to childhood leukemia. *Cancer*. 1967;20:333–53.
2. Gianni L, Dafni U, Gelber RD, et al. Treatment with trastuzumab for 1 year after adjuvant chemotherapy in patients with HER2-positive early breast cancer: a 4-year follow-up of a randomised controlled trial. *Lancet Oncol*. 2011;12:236–44.
3. Di Marco A, Gaetani M, Scarpinato B. Adriamycin (NSC-123,127): a new antibiotic with antitumor activity. *Cancer Chemother Rep*. 1969;53:33–7.
4. Abu-Khalaf MM, Juneja V, Chung GG, et al. Long-term assessment of cardiac function after dose-dense and -intense sequential doxorubicin (A), paclitaxel (T), and cyclophosphamide (C) as adjuvant therapy for high risk breast cancer. *Breast Cancer Res Treat*. 2007;104:341–9.
5. Telli ML, Hunt SA, Carlson RW, et al. Trastuzumab-related cardiotoxicity: calling into question the concept of reversibility. *J Clin Oncol*. 2007;25:3525–33.
6. Doyle JJ, Neugut AI, Jacobson JS, et al. Chemotherapy and cardiotoxicity in older breast cancer patients: a population-based study. *J Clin Oncol*. 2005;23:8597–605.
7. Hooning MJ, Botma A, Aleman BMP, et al. Long-term risk of cardiovascular disease in 10-year survivors of breast cancer. *J Natl Cancer Inst*. 2007;99:365–75.
8. Shah AM, Claggett B, Sweitzer NK, et al. Prognostic importance of impaired systolic function in heart failure with preserved ejection fraction and the impact of spironolactone. *Circulation*. 2015;132:402–14.
9. Geyer H, Caracciolo G, Abe H, et al. Assessment of myocardial mechanics using speckle tracking echocardiography: fundamentals and clinical applications. *J Am Soc Echocardiogr*. 2010;23:351–69, quiz 453–455.
10. Mavinkurve-Groothuis AMC, Weijers G, Groot-Loonen J, et al. Interobserver, intraobserver and intrapatient reliability scores of myocardial strain imaging with 2-d echocardiography in patients treated with anthracyclines. *Ultrasound Med Biol*. 2009;35:697–704.
11. Plana JC, Galderisi M, Barac A, et al. Expert consensus for multimodality imaging evaluation of adult patients during and after cancer therapy: a report from the American Society of Echocardiography and the European Association of Cardiovascular Imaging. *J Am Soc Echocardiogr*. 2014;27:911–39.
12. Lang RM, Badano LP, Mor-Avi V, et al. Recommendations for cardiac chamber quantification by echocardiography in adults: an update from the American Society of Echocardiography and the European Association of Cardiovascular Imaging. *Eur Heart J Cardiovasc Imaging*. 2015;16:233–70.
13. Thavendiranathan P, Poulin F, Lim K-D, et al. Use of myocardial strain imaging by echocardiography for the early detection of cardiotoxicity in patients during and after cancer chemotherapy: a systematic review. *J Am Coll Cardiol*. 2014;63:2751–68.
14. Elitok A, Oz F, Cizgici AY, et al. Effect of carvedilol on silent anthracycline-induced cardiotoxicity assessed by strain imaging: a prospective randomized controlled study with six-month follow-up. *Cardiol J*. 2014;2:509–15.
15. Lange SA, Jung J, Jaeck A, et al. Subclinical myocardial impairment occurred in septal and anterior LV wall segments after anthracycline-embedded chemotherapy and did not worsen during adjuvant trastuzumab treatment in breast cancer patients. *Cardiovasc Toxicol*. 2016;16:193–206.
16. Yağci-Küpelci B, Varan A, Yorgun H, et al. Tissue Doppler and myocardial deformation imaging to detect myocardial dysfunction in pediatric cancer patients treated with high doses of anthracyclines. *Asia Pac J Clin Oncol*. 2012;8:368–74.
17. Park JH, Kim YH, Hyun MC, et al. Cardiac functional evaluation using vector velocity imaging after chemotherapy including anthracyclines in children with cancer. *Korean Circ J*. 2009;39:352–8.
18. Adão R, de Keulenaer G, Leite-Moreira A, et al. Cardiotoxicity associated with cancer therapy: pathophysiology and prevention strategies. *Rev Port Cardiol*. 2013;32:395–409.
19. Thavendiranathan P, Wintersperger BJ, Flamm SD, et al. Cardiac MRI in the assessment of cardiac injury and toxicity from cancer

- chemotherapy: a systematic review. *Circ Cardiovasc Imaging*. 2013;6:1080–91.
20. Sawaya H, Sebag IA, Plana JC, et al. Early detection and prediction of cardiotoxicity in chemotherapy-treated patients. *Am J Cardiol*. 2011;107:1375–80.
21. Sawaya H, Sebag IA, Plana JC, et al. Assessment of echocardiography and biomarkers for the extended prediction of cardiotoxicity in patients treated with anthracyclines, taxanes, and trastuzumab. *Circ Cardiovasc Imaging*. 2012;5:596–603.