

5-5-2017

Treatment-Related Decisional Conflict, Quality of Life, and Comorbid Illness in Older Adults with Cancer

Jeannette Kates, PhD, MSN, GNP-BC

*Thomas Jefferson University, College of Nursing, jeannette.kates@jefferson.edu*Follow this and additional works at: <http://jdc.jefferson.edu/nursingposters> Part of the [Geriatric Nursing Commons](#)[Let us know how access to this document benefits you](#)

Recommended Citation

Kates, PhD, MSN, GNP-BC, Jeannette, "Treatment-Related Decisional Conflict, Quality of Life, and Comorbid Illness in Older Adults with Cancer" (2017). *Department of Nursing Posters*. 7.<http://jdc.jefferson.edu/nursingposters/7>

This Article is brought to you for free and open access by the Jefferson Digital Commons. The Jefferson Digital Commons is a service of Thomas Jefferson University's [Center for Teaching and Learning \(CTL\)](#). The Commons is a showcase for Jefferson books and journals, peer-reviewed scholarly publications, unique historical collections from the University archives, and teaching tools. The Jefferson Digital Commons allows researchers and interested readers anywhere in the world to learn about and keep up to date with Jefferson scholarship. This article has been accepted for inclusion in Department of Nursing Posters by an authorized administrator of the Jefferson Digital Commons. For more information, please contact: JeffersonDigitalCommons@jefferson.edu.

Background

- Sixty percent of cancers and two-thirds of cancer deaths occur over the age of 65 years (American Cancer Society, 2013)
- On average, people 65 years of age and over, with cancer, suffer from three additional diseases (Marenco et al., 2008)
- Cancer treatment-related decisions are multifactorial and complex for health care providers, patients, and families
- Decisions can lead to **decisional conflict**: “a state of uncertainty about which course of action to take when choices among competing actions involve risk, loss, regret, or challenge to personal life values” (Legare, O'Connor, Graham, Wells, & Tremblay, 2006, p. 374)
- With their focus on patient-centered care, oncology nurses are a crucial part of the multidisciplinary cancer team that can empower older cancer patients to communicate their values and preferences regarding cancer treatment.

Purpose

The purpose of this study was to examine the relationships between and among treatment-related decisional conflict, comorbid illness, and quality of life (QOL) in older adults with cancer.

Research Questions

1. What is the relationship between and among treatment-related decisional conflict, QOL, and comorbidity in older adults with cancer?
2. To what degree does the variability in QOL and level of comorbidity predict decisional conflict?

References

- Aaronson, N. K., Ahmedzai, S., Bergman, B., Bullinger, M., Cull, A., Duez, N. J., et al. (1993). The European Organization for Research and Treatment of Cancer QLQ-C30: A quality-of-life instrument for use in international clinical trials in oncology. *Journal of the National Cancer Institute*, 85, 365.
- American Cancer Society. (2013). *Cancer facts & figures 2013*. Atlanta, GA: American Cancer Society.
- Legare, F., O'Connor, A. M., Graham, I. D., Wells, G. A., & Tremblay, S. (2006). Impact of the Ottawa Decision Support Framework on the agreement and the difference between patients' and physicians' decisional conflict. *Medical Decision Making*, 26, 373.
- Marenco, D., Marinello, R., Berruti, A., Gaspari, F., Stasi, M. F., Rosato, R., et al. (2008). Multidimensional geriatric assessment in treatment decision in elderly cancer patients: 6-year experience in an outpatient geriatric oncology service. *Critical Reviews in Oncology/Hematology*, 68(2), 157.
- O'Connor, A. M. (1995). Validation of a Decisional Conflict Scale. *Medical Decision Making*, 15(1), 25.
- Sangha, O., Stucki, G., Liang, M., Fossel, A. H., & Katz, J. N. (2003). The Self-administered Comorbidity Questionnaire: A new method to assess comorbidity for clinical and health services research. *Arthritis Care & Research*, 49(2), 156.

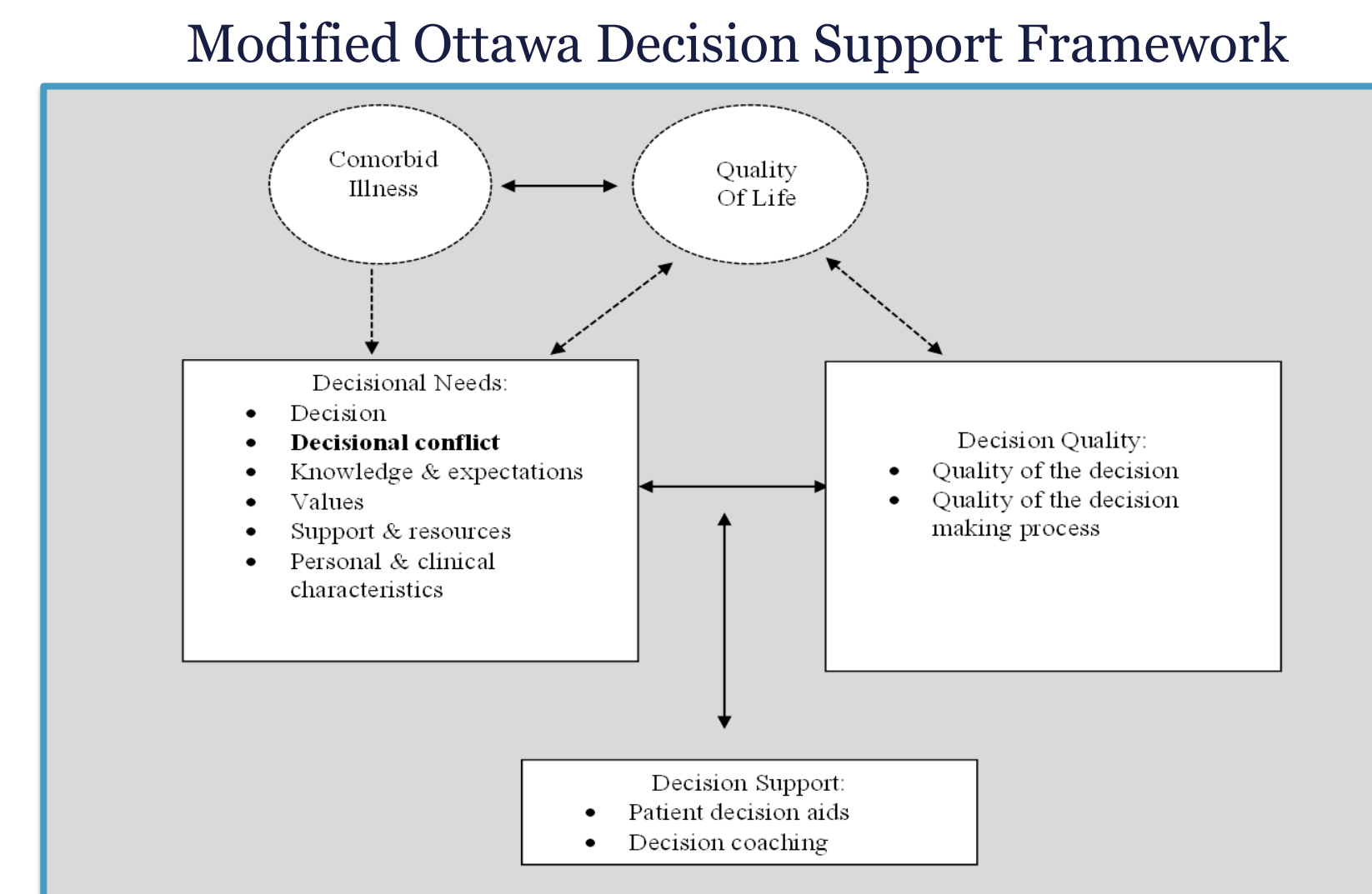
Methodology

Study design:

- Cross-sectional
- Descriptive
- Correlational
- Survey method

Instruments:

- **Decisional Conflict Scale (DCS)** (O'Connor, 1995)
 - 16 items consisting of 5 subscales:
 - Informed
 - Values clarity
 - Support
 - Uncertainty
 - Effective decision
 - 5-point Likert scale (0=strongly agree, 5=strongly disagree)
 - Scores range from 0 (no decisional conflict) to 100 (extremely high decisional conflict)
- **Self-Administered Comorbidity Questionnaire (SCQ)** (Sangha et al., 2003)
 - 13 items with the option of adding 3 additional conditions in an open-ended fashion
 - For each medical condition, the following is asked:
 - Do you have the problem?
 - Do you receive treatment for it?
 - Does it limit your activities?
 - Maximum of 3 points per condition/item
- **European Organization for Research and Treatment of Cancer Quality of Life Questionnaire (EORTC QLQ-C30)** (Aaronson et al., 1993)
 - 30 items
 - 5 function scales (physical, role, cognitive, emotional, social)
 - 3 symptom scales (fatigue, pain, nausea/vomiting)
 - 2 Global health/QOL
 - Additional symptoms
 - Global health/QOL items: 7-point Likert scale (1=very poor, 7 = excellent)
 - Remaining items: 4-point Likert scale (1=not at all, 4=very much)
- Demographic Information Form
 - 17 items
 - 5 open-ended items
 - 12 items with list of choices



Results

Descriptive statistics:

- N=200
- 73.1 years mean age
- 51% female
- 50.5% married
- 87.5% white
- Lung cancer most common (n=46)

Measure	Mean	SD	Range
DCS Total	22.1	12.5	0-70.3
EORTC QLQ-C30 Global Health Status/QOL	44.2	20.7	0-100
SCQ	9.6	4.1	3-23

Correlation analyses:

- Decisional conflict and QOL: $r_s(196) = .185, p = .009^*$
- QOL and comorbidity: $r_s(198) = .240, p = .001^*$
- Decisional conflict and comorbidity: $r_s(196) = .129, p = .070$

Key points:

- Mean DCS total score was low
- Global health status/QOL was poorer in this sample compared to other studies
- There may be a relationship between decisional conflict and QOL
- There may be a relationship between QOL and comorbidity
- Several physical, psychosocial, and spiritual variables may positively or negatively impact DCS score

Regression analyses:

Regression model	Variable	B	p
DCS total	Emotional function	-.201	** .001
	Diarrhea	-.131	** .002
	Financial problems	.076	** .024
DCS 1 (informed subscale)	Financial problems	.130	** .002
	Spiritual support	-9.486	* .021
DCS 2 (values clarity subscale)	Physical function	.145	* .019
	Emotional function	-.201	** .002
	Insomnia	-.114	** .004
	Diarrhea	-.107	* .020
DCS 3 (support subscale)	Emotional function	-.140	* .012
	Fatigue	-.167	* .031
	Diarrhea	-.133	** .001
	Year diagnosed	-.744	** .002
DCS 4 (uncertainty subscale)	Emotional function	-.233	** .006
	Diarrhea	-.146	* .018
	Financial problems	.105	* .034
	DCS 5 (effective decision subscale)	Global health status/QOL	.117
	Emotional function	-.239	** .000
	Nausea/vomiting	-.132	* .032
	Diarrhea	-.133	** .003
	Spiritual support	-10.956	** .002

* = p < .05, ** = p < .01