

The Hair Follicle: An Underutilized Source of Cells and Materials for Regenerative Medicine

Mehrdad T Kiani^{1,2}, Claire A Higgins^{1*}, Benjamin D Almquist^{1*}

1. Department of Bioengineering, Royal School of Mines, Imperial College London, London SW7 2AZ UK
2. Department of Materials Science, 496 Lomita Mall, Stanford University, Stanford CA 94305 USA

*Corresponding authors. c.higgins@imperial.ac.uk and b.almquist@imperial.ac.uk

Abstract

The hair follicle is one of only two structures within the adult body that selectively degenerates and regenerates, making it an intriguing organ to study and use for regenerative medicine. Hair follicles have been shown to influence wound healing, angiogenesis and neurogenesis, and harbor distinct populations of stem cells; this has led to cells from the follicle being used in clinical trials for tendinosis and chronic ulcers. In addition, keratin produced by the follicle in the form of a hair fiber provides an abundant source of biomaterials for regenerative medicine. In this review, we provide an overview of the structure of a hair follicle, explain the role of the follicle in regulating the microenvironment of skin and the impact on wound healing, explore individual cell types of interest for regenerative medicine, and cover several applications of keratin-based biomaterials.

Keywords: hair follicle, keratin, wound healing, biomaterials, regenerative medicine, stem cells

Introduction

Outside of a few locational exceptions, such as the palms of the hands or the soles of the feet, human beings are covered in hair. Surprisingly, we have as many hair follicles on our bodies as our closest relative, the chimpanzee¹⁻². However, we do not appear hairy like chimpanzees since our hair follicles often contain small unpigmented fibers termed vellus hairs, rather than large pigmented hair fibers which are known as terminal hairs³. On humans, these terminal hairs are limited to restricted body sites such as pubic areas, the face, and the scalp. Their presence in these areas, in particular on the eyebrow region on the face, enable us to effectively communicate and interact with other humans⁴. This feature imbues hair with important sociological functions, highlighted by the common use of hair based monikers that people use to describe one another. In addition to a sociological function, there are many cultural references alluding to the strength of long hair. Perhaps the most well-known story relating to the power of the hair follicle is the biblical story of Samson and Delilah. Samson's forte lay in his locks, and upon cutting his hair while he slept, Delilah depleted Samson of his strength.

Despite the well-established sociological and cultural importance of hair, humans appear to have 'lost' hair on their bodies; we are regarded as the naked ape. However, as is the case with all evolution, the loss of body hair must have conferred a competitive advantage at the time it occurred. A popular hypothesis explaining the loss of human body hair, or rather the miniaturization of terminal hairs to vellus hairs, is entwined with the savannah hypothesis of human evolution⁵⁻⁶. This suggests that movement from the jungle, where early humans were relatively inactive, to the savannah, required humans to become increasingly active⁷. As a result of this intensified activity humans needed to efficiently sweat to cool down quickly, thus we needed more sweat glands that are hypothesized to have arisen at the expense of terminal

hair follicles. While the sweat duct, or eccrine duct, has its pore at the skin surface separate from the pore of the follicle, the eccrine gland itself is intertwined and directly connected with the hair follicle ⁸.

Compared to other mammals, humans are incredibly efficient at sweating. In support of the hypothesis above is a recent publication that explored the natural variation in sweat gland and hair follicle number in several strains of mice. The authors found that as the number of sweat glands in mouse skin increases, the number of hair follicles concomitantly decreases, with activity of the transcription factor engrailed 1 shown to direct the relative numbers of each ectodermal appendage (the ectoderm is the outermost germ layer in the early embryo that gives rise to the nervous system and skin epithelium) ⁹.

From a regenerative medicine perspective, humans are intriguing since our 'loss' of hair is unique amongst mammals, but at the same time the hair follicles we have on our scalp actively produce hair fibers for several years at a time ¹⁰. This is an anomaly since hair follicles in other mammalian species are often in a resting state, not actively producing a hair fiber ¹¹. Thus, hair follicles from the human scalp provide an intriguing case study. In this review, we will cover how various cell types within these growing scalp hair follicles, and materials produced by these follicles, can be used for regenerative medicine purposes.

Orientation around the hair follicle

Before discussing the hair follicle as a source of cells and materials for regenerative medicine, we need to introduce this mini organ in more detail. All hair follicles on the body are formed prior to birth, and arise as a result of tissue interactions wherein one tissue influences the differentiation and development of the other tissue. This process of morphogenesis is known as secondary induction ¹². Once these developing follicles have matured, they continue to progress through cycles of regression, rest and growth throughout their lifetime. During the

growth stage, which is known as anagen, the hair follicle actively produces a hair fiber. As mentioned above, hair follicles from the human scalp can remain in anagen for several years at a time, enabling the growth of long hair on this body site. In comparison, sites such as the eyebrows and eyelashes contain follicles that have a relatively short anagen phase of only a couple months, leading to the growth of short hair on these sites ¹³. Upon the termination of anagen a new cycle starts that is characterized by entry into a destructive regression phase termed catagen. This destruction phase is thought to last approximately two weeks in human scalp hair follicles ¹⁰. During catagen the growth of the hair fiber stops, becoming known as a club fiber due to the 'club' shaped morphology at its root. Following catagen, follicles progress into a resting phase termed telogen, wherein the club fiber is retained until the following anagen stage when a new growing fiber is produced. The club fiber is eventually shed in a process known as exogen, which occurs independently of the other cycle stages ¹⁴⁻¹⁵.

In terms of spatial structure, the follicle can be subdivided into an upper permanent portion and a lower cycling portion. While both are present during the anagen stage, the lower cycling portion degenerates in catagen and telogen, before regenerating again in the next anagen stage. This makes the hair follicle the only structure, other than the mammary gland, that selectively degenerates and regenerates in the adult ¹⁶, making it an intriguing organ for studying the processes of regeneration.

On the human scalp approximately 90% of follicles are in anagen at any given time ¹⁷⁻¹⁸. Since we are discussing human hair follicles and their application in regenerative medicine, we will therefore cover the anagen follicle morphology rather than telogen or catagen morphology. Despite the base of anagen follicles residing deep within the adipose tissue of the skin (which is derived from the mesoderm germ layer of the early embryo), the majority of the follicle structure is derived from the ectoderm. Within the epithelial, or ectodermal compartment of the follicle,

there are distinct stem cell populations that enable follicle growth, the first of which was identified in the early 1990's.

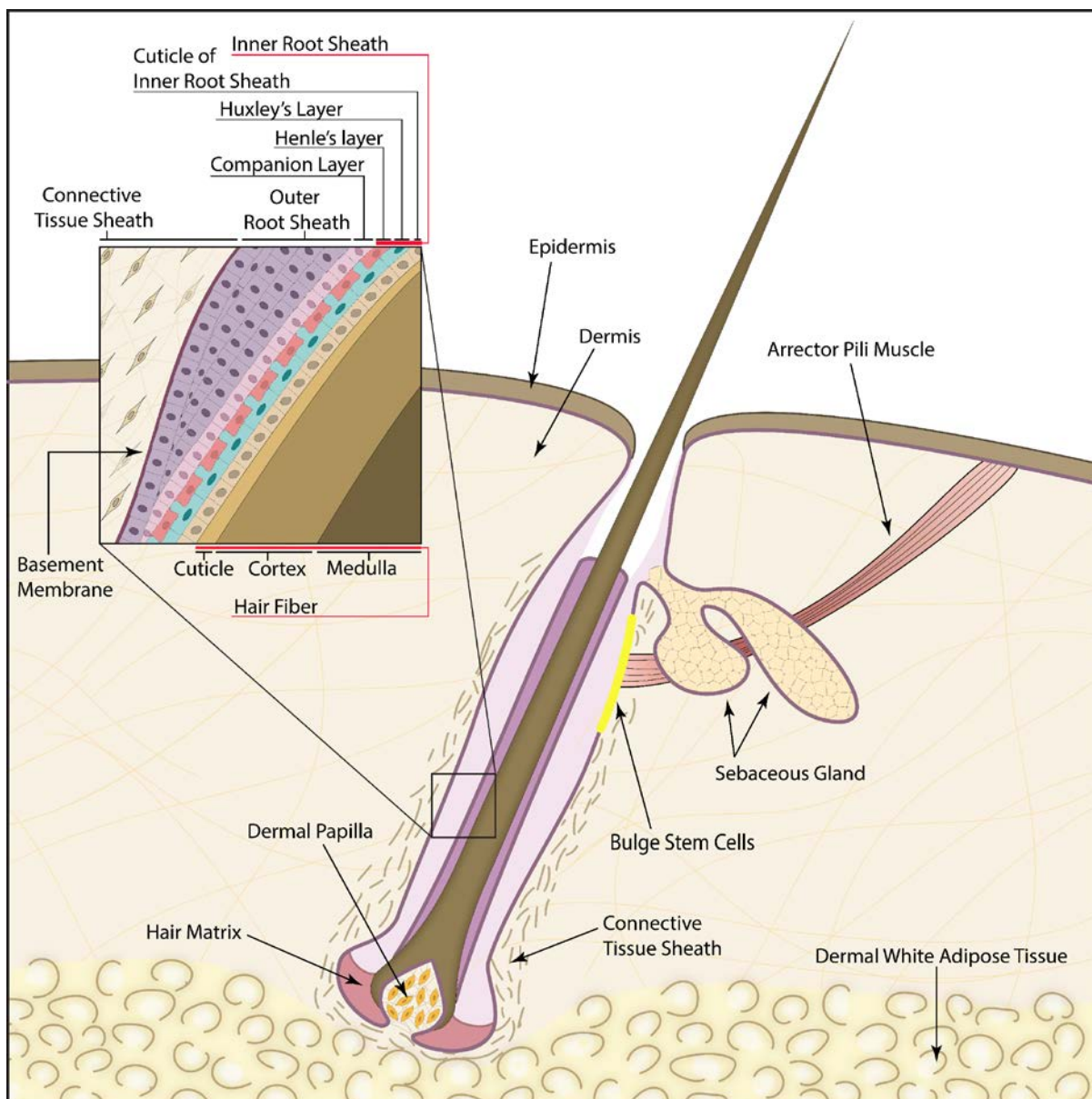


Figure 1. Schematic of the human hair follicle. The hair follicle contains both mesenchymal and epithelial components, separated by a basement membrane. The mesenchymal dermal papilla and connective tissue sheath (dermal sheath) direct growth and differentiation of subjacent epithelial cells. In the epithelial compartment, stem cells exit the bulge, proliferate, and contribute to the outer root sheath. Cells in the matrix, which forms from the hair germ in the telogen to anagen transition, proliferate, differentiate, and migrate upwards towards the skin surface giving rise to the three concentric layers of the hair fiber (medulla, cortex and cuticle), the three layers of the inner root sheath (cuticle, Huxleys, and Henles), and the companion layer.

This original stem cell population identified is termed the 'bulge', and is found in the 'permanent' compartment of the follicle (Figure 1). It is a small cluster of cells located in the basal layer of the follicle, beneath the sebaceous gland. It was first identified in murine hair follicles as a slow cycling and thus label retaining population ¹⁹. In human hair follicles, bulge cells are Krt15+ ²⁰, and possess the abilities to self-renew and differentiate into multiple cell types, fulfilling the criteria for designation as multipotent stem cells. Cell tracing experiments in murine skin have demonstrated that in homeostatic conditions, bulge stem cells give rise to all the lower epithelial cell lineages of the hair follicle including outer root sheath cells, matrix cells, the companion layer, three layers of inner root sheath cells, the hair cuticle, the cortex and medulla ²¹. It should be noted that this capacity for bulge cells to contribute to the anagen follicle is established earlier during the hair cycle; in telogen there is a subset of activated stem cells that are both derived from and are located just beneath the bulge in a germ structure ²². In the telogen to anagen transition these germ cells contribute to the hair matrix ²², which then differentiates into the concentric layers of the follicle during anagen ²³. Thus, bulge cells indirectly give rise to all the lower epithelial cell lineages of the follicle via the hair germ.

Once in anagen, stem cells exit the bulge and migrate down the basal layer of the follicle where they proliferate and contribute to the outer epithelial layer known as the outer root sheath. The outer root sheath contains hair keratinocytes that express the cytoskeletal protein Krt14. In the bulb of the follicle is the hair matrix, which contains transit amplifying cells derived from the hair germ in the previous telogen to anagen transition ²². In response to signaling from the dermal papilla mesenchyme, these matrix cells differentiate, and moving upwards they form concentric layers of the follicle including the hair shaft, the inner root sheath and companion layer ²⁴. The inner root sheath is comprised of three layers; Henle's layer, Huxley's layer, and an innermost cuticle layer, while the hair fiber is comprised of the hair cuticle, hair cortex, and hair medulla. The inner root sheath and hair fiber move towards the skin surface together as a

unit, with the fiber in the center surrounded by the inner root sheath. At the level of the sebaceous gland the inner root sheath is sloughed off by proteolytic enzymes, which leaves the hair fiber clean to exit the skin surface ²⁵. The hair fiber itself is rich in both type I and type II keratins, including keratin 33a, 33b, 34, 39, 40 (Type I's), and keratin 81, 83, and 86 (Type II's) ²⁶.

In the preceding discussion of the bulge, we are referring to the epithelial stem cells within the bulge that give rise to the epithelial lineages of the follicle. However, there is a second stem cell population that is also found anatomically within the bulge compartment, known as melanocyte stem cells ²⁷. Melanocyte stem cell progeny reside in the hair bulb during anagen, where they produce melanin pigment granules that are transferred to epithelial cells, in turn giving the hair fiber its color ²⁷.

Following the discovery of the bulge, other markers such as CD200 (human) and CD34 have been shown to mark the epithelial cell population that resides there ²⁸⁻²⁹. Markers such as Lgr5 and Gli1 mark sub-populations of epithelial cells that also reside within the bulge ^{28, 30}. More recently, an additional epithelial stem cell population, anatomically close to the bulge cells but functionally distinct, was identified ³¹. This Lrig1+ population that is juxtaposed to the bulge cells contributes to the formation of the sebaceous gland, isthmus, and infundibular regions of the hair follicle ³¹. Specifically, Lrig1+ stem cells give rise to keratin 79 positive (Krt79+) cells that line the lumen of the infundibulum; the canal opening at the skin surface where the hair fiber exits. These Krt79+ cells express high levels of matrix metalloprotease 9 (Mmp9), leading to the suggestion that the lumen is established as a result of proteolysis ³².

Recently, single cell RNA sequencing was performed on all epithelial populations in murine skin. The unparalleled resolution afforded by this method enabled identification of 16 populations of epithelial cells within the hair follicle, several of which were previously undefined ³³. Going forward, understanding the transcriptional regulators of cell hierarchy within the hair

follicle will help resolve how stem cells with different transcriptional identities give rise to the different cell types within the follicle. Stem cells are a powerful source of cells for rebuilding tissues, and using the right cell at the right time will advance the field of tissue engineering. Their increased potency compared to differentiated cells means multicellular tissue structures can be engineered using a single starting cell that is at the top of the hierarchical tree, and has the capacity to differentiate into all the cells within the end tissue ³⁴.

While the epithelial portion of the follicle comprises the majority of the tissue structure, there are key mesenchymal components of the follicle that cannot be overlooked ³⁵. These are predominantly the dermal papilla and the dermal sheath, which is also known as the connective tissue sheath. The dermal papilla is engulfed by the epithelial matrix and lies at the base of the follicle. Despite this proximity, the dermal papilla and hair matrix are separated by a glassy membrane, which is a thickened and thus specialized basement membrane ³⁶. The dermal papilla is connected via a small neck at its base to the dermal sheath that wraps around the exterior of the follicle, and is separated from the outer root sheath by a basement membrane that runs continuous with the basement membrane between the skin dermis and overlying epidermis. The dermal papilla and dermal sheath are derived from the same cellular progenitors as the fibroblasts that reside in the interfollicular skin dermis ³⁷; however, they are distinctly different in their gene expression profiles and biological function. While the interfollicular fibroblasts support growth and differentiation of the overlying epithelial cells (i.e. keratinocytes), the dermal papilla and sheath have key roles in directing hair growth ³⁸⁻³⁹.

In human skin, individual hair follicles are organized into follicular units that each contain 2-5 hair follicles. Despite there being multiple follicles per unit, all the hair fibers produced in these units exit through a single pore at the skin surface. Each of these follicular units is also connected to just one arrector pili muscle, which connects the follicles at the level of their bulge to the basement membrane of the skin epidermis ⁴⁰. Work in mouse skin has demonstrated that

the fibroblast progenitors that contribute to the arrector pili muscle come from the upper skin dermis during skin development ³⁷, while we also know that the loss of a specific extracellular matrix protein in the basement membrane of the follicle next to the bulge perturbs attachment of the muscle at this site ⁴¹. It seems there is an interesting relationship between the follicle and the arrector pili muscle, as observational studies in human skin have found follicles that miniaturize in male pattern baldness do so after losing attachment to the arrector pili muscle ⁴²⁻⁴³.

Impact of hair follicles on skin regeneration

Now that we have an understanding of how an anagen hair follicle is structured, it is possible to explore the role of this complex structure on skin regeneration. There are numerous studies in murine skin that have led to the proposal that hair follicles modulate skin regeneration. Many of these studies have focused on the skin macroenvironment, and changes that occur here in response to changes in the hair cycle. In human skin hair follicles grow in a mosaic pattern, and each follicle grows independently from hair follicles surrounding it. This makes studies of the macroenvironment in relation to hair follicle cycle stage relatively difficult. However, in murine skin hair follicles grow in a wave along the back of the mouse, from anterior to posterior ⁴⁴. This means that murine skin can be isolated when all follicles are in either anagen, catagen, or telogen, and the surrounding macroenvironment can be assessed with regard to the cycle stage of the follicle.

Some of the first studies into the patterns of hair cycling in murine models looked at skin thickness. It is now well accepted that the skin thickens during anagen, and decreases in thickness during catagen and telogen ⁴³. The majority of this increase in thickness in anagen is due to increases in the adipose layer, however, the skin dermis is 1.2-1.5 fold thicker in anagen than it is in telogen ⁴⁵⁻⁴⁶. There is little evidence for proliferation of fibroblasts in the skin dermis of adult mice ⁴⁷ to explain this increase in thickness. An alternative suggestion is that dermal

extracellular matrix is redistributed to accommodate the growth of follicles during anagen, resulting in an increase in dermal thickness but not total dermal volume ⁴⁶. Researchers have also looked at the relationship between other dermal constituents such as vasculature, finding that the number of capillaries in the skin decreases during catagen and telogen, but then increases during anagen ⁴⁸⁻⁴⁹. This leads to the question as to which comes first; the anagen hair follicle or skin vascularisation. Skin biologists will argue that the anagen hair follicle is a source of pro-angiogenic factors, and expression of these factors within the follicle during anagen promotes angiogenesis in the surrounding skin dermis ⁴⁸. One such factor is Vascular Endothelial Growth Factor (VEGF), a well-known pro-angiogenic factor that is highly expressed by cells within the anagen hair follicle ⁵⁰.

Macroenvironment fluctuations are not limited to the vascular networks around the follicle; neural networks, immune cell populations, and dermal white adipose tissue all have cyclic activity analogous with the follicular cycle ⁵¹. Neuronal networks display a high degree of remodeling in coordination with the follicle cycle; degeneration occurs during telogen, followed by reinnervation of the skin during anagen, particular around the bulge area of the follicle ⁵². Studies into the immune populations have mainly focused on macrophages that intriguingly decrease concomitantly with the onset of anagen ⁵³. Dermal white adipose tissue follows a similar oscillation trend as the skin dermis, with adipose precursor cells differentiating into mature lipid filled adipocytes during anagen, resulting in a 2-3 fold increase in intradermal tissue during this hair cycle stage ^{45, 54-55}. Upon completion of anagen, mature adipocytes apoptose resulting in a decrease in tissue bulk size, while proliferation of adipose precursor cells ensures there are enough in reserve for when the follicle re-enters the next anagen stage ⁵⁴.

This dermal remodelling that is associated with the hair cycle most likely has an impact on the ability of skin to heal. Research has shown that when wounds are created in the dorsal skin of mice with hair follicles in anagen, they close significantly quicker than wounds

established in dorsal skin containing telogen hair follicles ⁵⁶. However, the specific role of the hair follicle in wound healing cannot be deconvoluted from the other morphological changes in the skin dermis such as the altered numbers of blood vessels, neural networks and immune cell populations. Care should be taken by researchers when studying wound healing in skin, since the growth state of the hair follicle can influence and alter results. In addition, caution should be exercised when translating findings from murine skin to human. For example, dermal $\gamma\delta$ T cells are critical modulators of skin and hair regeneration in mice, however, humans lack appreciable numbers of these cells in their skin dermis ⁵⁷.

Perhaps alluding to a role for human hair follicles in wound healing are early self-experimentation studies performed by George Holman Bishop, who created wounds on his own skin and followed their closure ⁵⁸. His observations tell us that re-epithelialization of wounds first occurs in pockets around the hair follicle, suggesting that bulge stem cells can form skin epidermis in a wound situation. In the 1940's when Bishop performed these experiments, researchers did not know the location of the stem cells within the follicle. However, more recent lineage tracing experiments in murine models has confirmed his early observations, and we now know that hair follicle stem cells within the bulge can migrate upwards to replenish the skin epithelium after wounding ⁵⁹⁻⁶⁰.

Finally, perhaps the most convincing evidence that hair follicles have a role in skin regeneration comes from recent work arising in the field of hair transplantation. Fueled by the above observations that hair follicles promote both dermal and epidermal remodeling, a number of groups have transplanted plugs of skin containing terminal anagen hair follicles from the scalp into chronic venous ulcers. These are predominantly observation studies conducted in human skin, but the early results indicate that the skin plugs containing hair follicles promote wound closure significantly faster than skin plugs devoid of terminal hair follicles ⁶¹. Wound closure is defined as re-epithelialization, although the working hypothesis is that the follicle

promotes both dermal remodeling and provides a source of cells for re-epithelialization⁶². When focus is moved to specifically assess the regenerated epithelium, its clinical appearance is significantly improved when skin plugs containing hair are used compared to skin plugs devoid of hair⁶³.

Hair follicles as a source of cells for regenerative medicine

In the section above we focused on whole follicles and their role in dermal and epidermal remodeling, both during the hair cycle and after wound healing. We will now switch tack, focusing specifically on various tissues within the follicle, notably the mesenchymal dermal papilla and sheath, and the epithelial bulge.

One of the more intriguing aspects of the dermal papilla and dermal sheath, as introduced above, is that they direct the growth of hair in adult skin. Hair follicles go through cycles of anagen, catagen and telogen throughout their lifetime, and the presence of, and signals from the dermal papilla and dermal sheath are fundamental for progression through these cycle stages⁶⁴. Perhaps even more intriguing is the observation that both dermal papilla and dermal sheath can have similar effects *ex vivo*. When these mesenchymal tissues are removed from both rodent and human hair follicles and grafted into non-hairy skin or inactivated follicles, they can induce new hair follicle and fiber growth in the recipient epithelium⁶⁵⁻⁶⁶. Thus, specific mesenchymal cell types from the follicle can induce formation of new hair growth after transplantation into non-hairy skin. While this can potentially serve as an autologous cell therapy, the hair follicle is immune privileged and dermal sheath cells are known to avoid rejection and elicit hair growth in an allograft⁶⁷. Their immune privilege is thought to arise due to their virtual lack of MHC Class I and II antigens⁶⁸, which makes the dermal papilla and sheath potentially advantageous to other cell types for allogeneic cell therapies.

As components of the hair follicle, it has also been postulated that dermal papilla and dermal sheath cells can contribute to the skin dermis where they have roles in skin formation and wound remodeling⁶⁹⁻⁷⁰. In this context, both dermal papilla and sheath cells are able to replace dermal fibroblasts to form the dermal component of engineered skins⁷¹. Engineered skins are one of the first tissue engineered products to be used clinically, and are usually comprised of a simple collagen-based dermis containing dermal fibroblasts, and an epithelial component. In response to signaling from the underlying dermis, the epithelial keratinocytes proliferate, then differentiate and stratify to form the multiple layers of the skin epidermis. A key component of these skins are the stem cells in the basal layer of the epidermis. These stem cells are able to self-renew, maintaining continuous turnover of the epithelium and ensuring successful skin replacement⁷².

In engineered skin containing either dermal papilla or sheath cells substituted for dermal fibroblasts, normal differentiation and stratification of the overlying epithelial cells occurs, while basal layer cells continue to proliferate. In addition, the hair follicle dermal sheath cells appear superior to dermal fibroblasts in one aspect; they are able to induce the formation of a thickened basement membrane⁷¹. In a regenerative medicine context, this may strengthen the replacement skin when engineered skins are used in grafting.

Regardless of their role in hair follicle cycling and skin development, dermal papilla and sheath cells have other understudied properties that are of interest in the field of regenerative medicine. Dermal sheath cells are prolific producers of collagen I, and because of this RepliCel Life Sciences are currently conducting a Phase I/II autologous cell therapy trial in 28 patients (Clinical trial # NCT02330146) using dermal sheath cells isolated from the hair follicle to treat chronic Achilles tendinosis. At the time of writing this review there are no results informing us of dermal sheath efficacy in tendon repair, however previous trials with skin-derived fibroblasts have been shown to be safe.

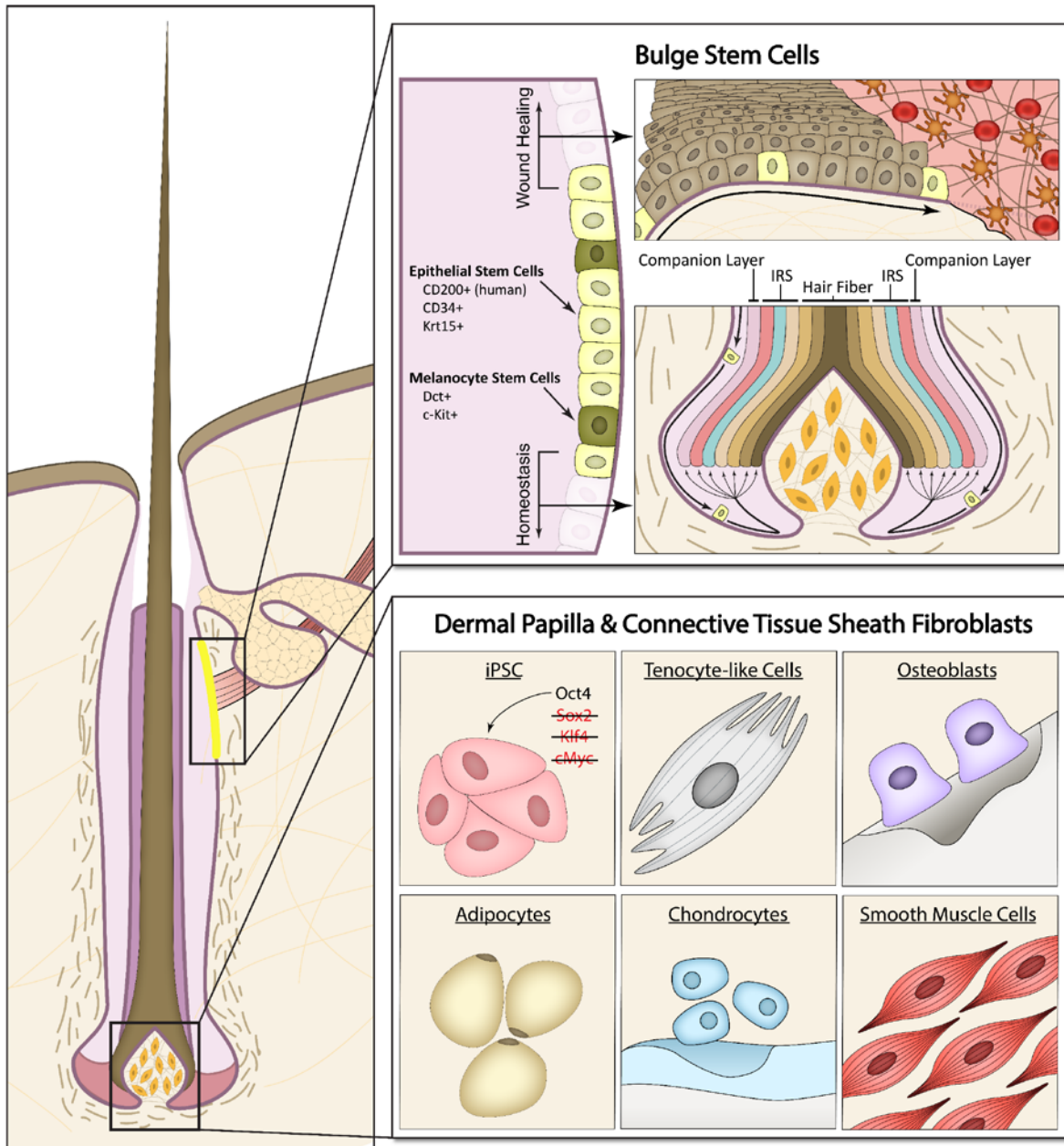


Figure 2. Regenerative medicine application of cells from the hair follicle. Epithelial stem cells located in the bulge can give rise to the different epithelial lineages of the hair follicle. In response to wounding in the skin, bulge stem cells contribute to re-epithelialization of the epidermis. Comparatively, hair follicle dermal papilla and connective tissue sheath (dermal sheath) cells can differentiate into many cells including osteoblasts and adipocytes. In a clinical trial for tendinosis, sheath cells are believed to differentiate into tenocyte-like cells.

When isolated from the follicle and grown in cell culture, both dermal papilla and sheath

populations are multipotent. It is known that in vitro, these hair follicle-derived cells are able to differentiate into cells from several other mesenchymal lineages including osteoblasts, adipocytes, contractile smooth muscle cells, and chondrocytes (Figure 2)⁷³⁻⁷⁵. Given the immunogenic properties of dermal papilla and dermal sheath cells, along with their multipotency and accessibility, they represent a source of cells that may be employed for applications such as cardiac regeneration or the replacement of bone and cartilage in joint repair⁷⁶.

However, when thinking of clinical applications a single dermal papilla from one hair follicle will not go very far; a dermal papilla from a scalp hair follicle contains on average 1300 cells⁷⁷. To be suitable for clinical use the cells have to be first micro-dissected from the follicle, then their numbers expanded in culture⁷⁸. Dermal papilla cells grow according to a Gompertz function, which means they grow very slowly at the initiation of the culture⁷⁹. The perturbing event of growth in culture also elicits dramatic changes in the signature and behavioral traits of the cells, such as the ability to induce de novo hair growth⁶⁵. Once cultures are established, dermal papilla cells have an average doubling time of 93 hours⁷⁹, and to increase in number to 5 million+ cells required to repair a critical size bone defect⁸⁰ would take approximately 50 days. While obtaining a culture of 5 million cells is achievable with dermal papilla culture, in normal culture conditions they will not double enough times prior to exhaustion to produce a sufficient number of cells to repair larger defects. Many times these large defects require hundreds of millions to billions of cells⁸¹. Alternative cell culture approaches, where bioreactors are used to maintain cells in a stirred suspension are starting to be employed for the culture of skin cells⁸². In addition, materials scientists are currently devising ways to alter the growth kinetics of cells in order to promote proliferation while maintaining key biological properties such as stemness⁸³⁻⁸⁴.

In addition to the exciting regenerative medicine applications of the mesenchymal populations of the follicle, cells from the epithelial stem cell region of the follicle (the bulge) also have intriguing properties. As mentioned above, we know that in response to wounding in the

skin epidermis, bulge stem cells differentiate into interfollicular epithelial cells and contribute to the healing of the epithelium⁵⁹. A similar response of bulge cells occurs when homeostasis of the sebaceous gland is perturbed; bulge cells migrate to the sebaceous gland and differentiate into sebocytes⁸⁵⁻⁸⁶. In addition, hair follicle bulge cells have been incorporated into bioengineered skin constructs, where they are capable of forming a stratified epithelium⁸⁷. Epithelial sheets established using hair follicle bulge cells have also been used as an autologous therapy to treat chronic ulcers⁸⁸⁻⁸⁹, drawing attention back to their wound healing capacity.

We also know from recent work assessing the epigenetic status of cells in the follicle that hair follicle bulge stem cell identity is governed by transcription factor binding at super-enhancers associated with hair follicle stem cells⁹⁰. In the past few years, there has been increasing interest in super-enhancers as governors of cell identity. Super-enhancers are enhancers (>28kb) that have elevated H3K27ac occupancy, and are bound by multiple transcription factors at a time. In turn, the genes transcribed as a result of super-enhancer binding are usually unique to specific cell types, and therefore associated with cell identity⁹¹. In response to wounding in the skin or growth of bulge cells in culture, the super-enhancers associated with bulge stem cells lose their H3K27ac occupancy and become actively repressed. Instead, super-enhancers associated with a wound healing identity acquire H3K27ac marks, enabling transcription of genes associated with an interfollicular fate⁹⁰. This highlights the dramatic epigenetic changes, in addition to genetic ones, which occur when cells are removed from their in vivo surroundings and grown in cell culture.

In recent years the interest in bulge stem cells has increased as they can be isolated from a single plucked hair fiber; a skin biopsy is not required. Specifically, bulge stem cells gained attention when cells isolated from plucked hair fibers were used to generate bonafide populations of induced pluripotent stem cells (iPSCs)⁹². This may have large implications for

the field of regenerative medicine, where iPSCs have had a significant impact since their derivation in 2006 ⁹³. This is because iPSCs are pluripotent stem cells, which share many similarities with embryonic stem cells and can differentiate into cells from all germ layers: the endoderm, mesoderm and ectoderm. However, unlike embryonic stem cells, iPSCs can be generated with patient specific cells, enabling the study of specific disease mechanisms and methods of gene therapy in addition to regenerative cell therapies. Being able to generate iPSCs from cells from plucked hair fibers makes the hair follicle bulge extremely accessible as a source of cells for regenerative medicine ⁹², and enables the generation of iPSC from patient groups where skin biopsies cannot be easily taken, such as children.

While accessibility is a large benefit when it comes to optimal cell sources for iPSC, the slightly less accessible hair follicle dermal papilla may actually be an even better source for iPSC than bulge stem cells. Dermal papilla cells are a somatic cell population that express Sox2, Klf4, and cMyc ⁹⁴, which readers with a knowledge of iPSC will realize are 3 of the 4 suggested factors used to reprogram somatic cells into a pluripotent state ⁹³. Thus, murine dermal papilla cells can be isolated from hair follicles and with the addition of Oct4 alone, can be reprogrammed into iPSCs ⁹⁵. The reprogramming efficiency of dermal papilla cells with only Oct4 is 0.088%, similar to the efficacy observed in other cell types when all 4 factors are used ⁹⁵. When all 4 transcription factors (Oct4, Sox2, Klf4, cMyc) are used to reprogram murine dermal papilla cells, reprogramming efficiency is as high as 1.38% ⁹⁶. Hence, dermal papilla cells currently share similarities with neural stem cells ⁹⁷, as these are the only two cell types to have been reprogrammed using a single factor. However, it is easy to appreciate that while dermal papilla cells are not as accessible as bulge stem cells, they are much easier to obtain compared to neural stem cells, and a simple scalp biopsy is all that is needed for their isolation.

Taken together, the diverse collection of cell populations within the hair follicle provide an exciting source of cells for applications in regenerative medicine. Their low immunogenicity,

ease of access, and efficient differentiation all support continued exploration of their translational potential. With that being said, while the individual cell types are indeed interesting for regenerative medicine, the materials that they produce are equally interesting for use as biocompatible materials for regeneration.

Hair follicles as a source of biomaterials for regenerative medicine

In ectodermal appendages like the hair follicle, keratin is the major constituent that provides strength and resilience to the end product, the hair fiber. In this final section of this review, we will focus on the importance of keratin from hair follicles as a biomaterial for regenerative medicine. Despite being studied for over 100 years, keratin remains relatively underexplored as a biomaterial when compared to collagen and fibronectin. However, keratin provides unique properties and benefits that make it an intriguing material to use.

Keratin represents a class of important intermediate filament proteins that are ubiquitous across numerous animal species and possess unique mechanical and structural properties⁹⁸. Their classification is based on these properties, and the first major classification of keratin aims to separate these proteins by their predominant secondary protein structure. β -keratin, characterized by β -sheet structure, is much stronger than α -keratin, characterized by α -helices⁹⁹. β -keratin constitutes the major component of scales, claws, beaks, and shells, providing the strength and rigidity seen in these appendages. Compared to β -keratin, α -keratin is not nearly as rigid¹⁰⁰, however it is the only type found in mammals and is present in hair, nails, wool, and horns. In humans there are 54 known α -keratin monomers, further separated into Type I (acidic) and Type II (basic/neutral) keratins. Of these 54 keratins, approximately half are specifically expressed in the hair follicle²⁶. A heterodimer unit is formed between one Type I and one Type II keratin that form a “coiled-coil” tertiary structure. This constitutes the basis of a functional keratin unit⁹⁹.

While the secondary and tertiary structure provide ways to classify keratins, the strength and insolubility of keratin arises from their amino acid constituents and the covalent interactions between amino acids ¹⁰⁰. In particular, keratin from human hair possesses a high amount of cysteine, ranging from 8.7-17 mol% depending on gender, race, and hair color ¹⁰¹. Cysteine contains a thiol group that is easily oxidized, enabling the formation of disulfide bonds between keratin units. This common formation of disulfide bonds provides the robust mechanical properties and insolubility characteristic of keratin ¹⁰².

In ectodermal appendages such as the hair follicle, the disulfide characteristic of keratin can lead to difficulty in breaking down the tertiary structure. While human cells produce proteolytic enzymes such as caspases ¹⁰³, these enzymes are not typically secreted outside cells and do not target disulfide bonds (these enzymes, termed keratinases, can be found in bacteria and fungi ¹⁰⁴). Thus, hair is stable for most time scales of interest and does not undergo significant degradation. This stability is ideal in the case of nails and hair, but it can also give rise to medical problems. Highlighting keratin stability is the clinical presentation of a condition known as Rapunzel Syndrome. This is a rare condition where eating a large quantity of hair leads to potentially fatal intestinal blockage ¹⁰⁵. Since trypsin and pepsin are unable to digest keratin, surgery is the only option for such cases. The issue of degradability also poses a problem in many analytical techniques such as mass spectrometry, HPLC, and SDS-PAGE ¹⁰⁶, and researchers must take care that their own skin or hair doesn't lead to erroneous experimental results due to contamination.

Although keratin is relatively resistant to degradation, the process for extracting it from hair, feathers, and wool is straightforward and inexpensive (Figure 3). The first step involves washing the raw material with soap or surfactant to remove any oil residues on the surface that may interfere with subsequent processing. After drying, it is necessary to break down the α -helical structure by chemically reducing or oxidizing the disulfide bonds between cysteine

groups in the keratin. Without breaking the disulfide bonds, keratin is insoluble in nearly all solvents and cannot be easily modified. To reduce the raw keratin, the washed source material is placed in a solution with reducing or denaturing reagents such as 2-mercaptoethanol, thioglycolic acid, urea, dithiothreitol, or ionic liquids¹⁰⁷⁻¹⁰⁸. The solution is then mixed at an elevated temperature and left for several hours to days depending on the reducing agent, followed by filtering to remove any undissolved raw material. This is necessary to remove components of source material that do not readily dissolve, such as the cuticle of hair fibers. At this point, the solution contains the reduced keratin, which is called kerateine¹⁰⁹. This solution can be dialyzed and extracted as kerateine, or modifications such as carboxymethyl groups added to the reduced thiols to prevent disulfide formation; iodoacetic acid is commonly used for this modification.

Oxidation of keratin is commonly done using peracetic acid to promote fission and subsequent conversion of the disulfide crosslinks in keratin to sulfonic acid groups. This oxidized form of keratin is known as keratose, and consists primarily of keratins from the cortex of the hair fiber¹¹⁰. As materials keratose is more susceptible degradation (degrades over days to weeks) due to presence of the acid groups and inability to reform disulfide bonds, while kerateine retains the ability to form disulfides and has a backbone that is less susceptible to hydrolytic degradation (degrades over weeks to months)¹⁰⁹. One unique benefit of these differing degradation profiles is that it allows for tunable rates of degradation via simple mixing of kerateine and keratose¹¹¹. In the end, kerateine (via reduction) and keratose (via oxidation) are the basic building blocks for most applications that use keratin.

Due to the availability and easy extraction process, in recent years keratin has become more popular as a regenerative biomaterial (Figure 3), complementing, and sometimes replacing more traditional biomaterials such as collagen and fibronectin. While there is a wide body of literature exploring how cells interact with these more traditional biomaterials, in the

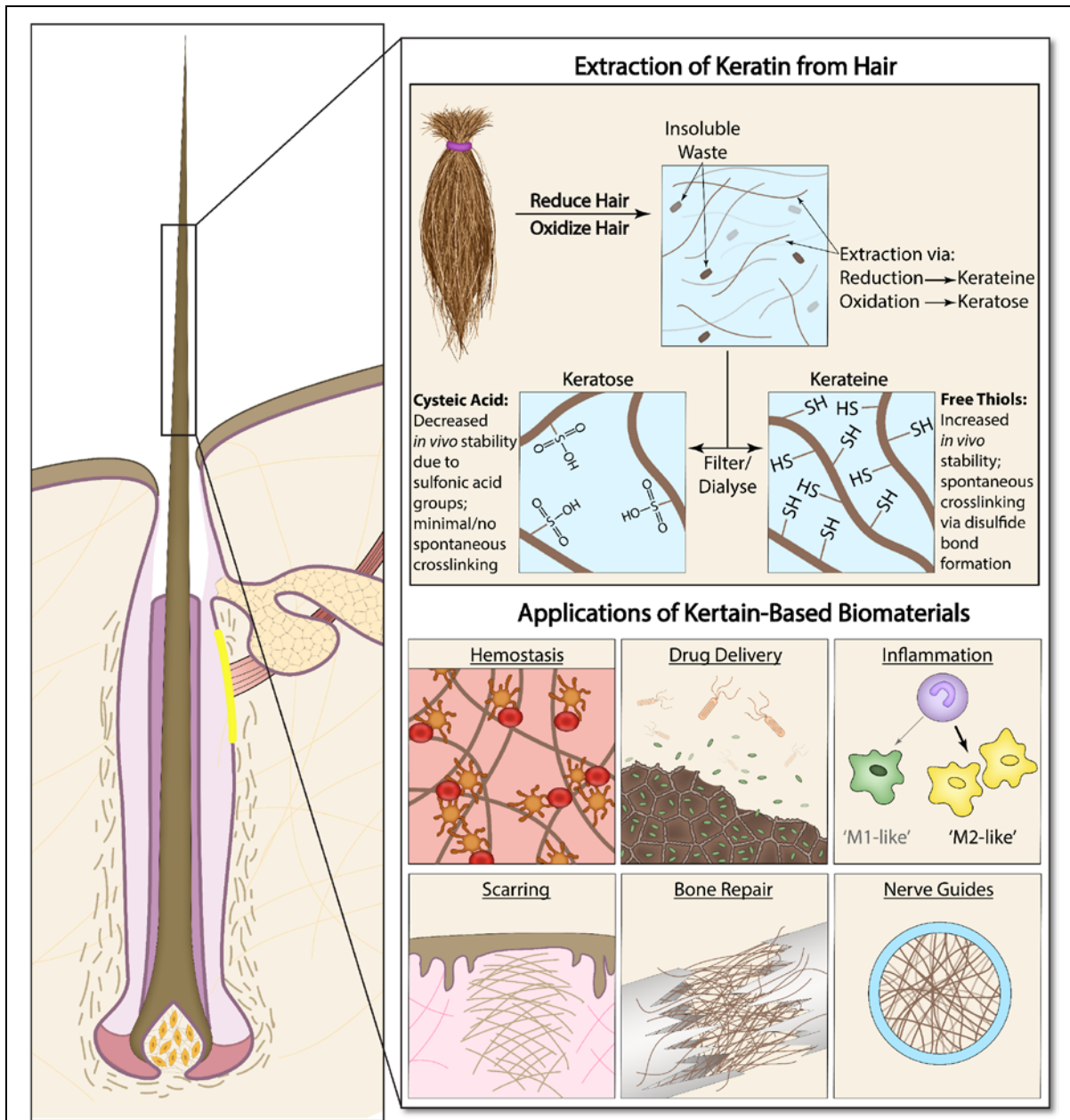


Figure 3. Regenerative medicine applications of biomaterials from the hair follicle. The use of keratin as a biomaterial. (Top) Extraction of keratin from source materials such as hair is a straightforward process. Following reduction or oxidation of disulfide bonds, the solution is filtered and extracted as either keratine or keratose. (Bottom) Keratin-derived materials have been developed for a range of medical applications. These include promoting hemostasis, controlling drug delivery, modulating inflammation, reducing scarring, promoting bone repair, and acting as neural guides.

case of keratin biomaterials there is much less is known regarding the specific interactions between cells and the molecular features of keratin. Despite numerous studies demonstrating that many cells can attach to keratin ¹¹²⁻¹¹⁶, the underlying mechanisms of attachment have remained elusive. Binding regions such as RGD and LDV are thought to be the dominant integrin binding sites¹¹⁷, however, studies have not been decisive as to whether integrin-dependent binding is the dominant mode ^{112, 118-119}. For instance, inhibition of the $\beta 1$ & $\beta 2$ subunits in hepatocytes does not affect cell binding to a keratin film, whereas inhibition of the asialoglycoprotein receptor inhibits binding ¹¹⁴. However, inhibition of the $\beta 1$ & $\beta 3$ subunits, talin staining, and inhibition of focal adhesion kinase phosphorylation in platelets all indicate integrin-mediated binding to keratin hydrogels ¹²⁰. These divergent examples highlight the need for a better understanding of how specific cells interact with keratin, in order to facilitate tailoring the properties to fit the needs of different applications.

Even though the interactions of keratin with specific cell types remains to be elucidated, there is still a large body of literature that uses keratin as a biomaterial in wound healing, tissue regeneration, ocular surface reconstruction ¹²¹⁻¹²³, and in models to study fungal infections of nails ¹²⁴⁻¹²⁵. Below, we will highlight some examples that have used keratin extracted from human hair, however, a large body of work also exists for keratins that are extracted from other ectodermal appendages such as feathers and wool. To begin, we will explore how keratin is a unique material for modulating multiple phases of wound healing, followed by exploring how keratin's resistance to degradation can be utilized for applications addressing long-term tissue regeneration.

Wound healing is an attractive area for applying new innovations in biomaterials. Due to the highly dynamic and complex process of wound repair, biomaterials have the potential to work as exogenous orchestrators of the repair process ¹²⁶. Keratin biomaterials are interesting in this regard, as they have unique properties that can be harnessed for promoting hemostasis,

delivering antimicrobials, modulating the immune response, delivering biologics such as growth factors, and modulating scar formation.

We will begin with keratin's role in promoting hemostasis, since stopping blood loss and promoting coagulation is the first step down the path of wound repair ¹²⁷. For small wounds this step occurs without the need for intervention, however in cases such as battlefield injuries or surgery, significant blood loss can be fatal. To address this problem, the van Dyke Group has pioneered the development of numerous keratin biomaterials for hemostasis. In vivo studies, assessing liver injury in both rabbits ¹²⁸ and porcine models ^{120, 129}, have demonstrated either comparable or better survival rates and decreased blood loss using keratin hydrogels instead of commercially available hemostats. Post-sacrifice, histological analysis of keratin hydrogels revealed cell infiltration and the beginning of granulation tissue formation, which was not observed in commercially available hemostat samples. More recently, a keratin nanoparticle-based approach demonstrated decreased coagulation time both in vitro and in vivo using a rat laceration model, providing an alternate "powder" based approach that may have a better shelf life and require less preparation time than a keratin hydrogel ¹³⁰.

The underlying mechanism that promotes coagulation in kerateine gels is thought to depend on thrombin-mediated fibrin polymerization ¹¹⁵. Platelets have been shown to bind to kerateine hydrogels in an integrin-dependent manner ¹²⁰, which concentrates platelets in the wound region and enables coagulation via fibrin polymerization. An in vitro study of kerateine in solution with plasma found increased fibrin polymerization in clots ¹¹⁵, and while the coagulation cascade is unclear, this phenomenon sheds light on why a keratin hydrogel can perform better than commercially available hemostats that work by predominantly absorbing fluid, concentrating clotting compounds, and providing a seal around the wound ¹²⁹. Interestingly, keratose shows good blood compatibility ¹³¹, indicating that the thiol groups in kerateine likely play an important role in coagulation through disulfide-mediated interactions ¹³².

Once bleeding has stopped the process of tissue repair can begin. In situations where it is difficult to ensure a clean wound environment, or where infection has been established (e.g. chronic wounds), it is advantageous to have a method for localized, controlled delivery of antibiotics to keep infections from inhibiting successful healing. Keratin-based biomaterials may offer a promising delivery strategy to achieve sustained release of antibiotics at the wound site due to slow degradation profiles, resistance to numerous enzymes, and flexible fabrication processes that can produce antimicrobial electrospun dressings¹³³, films¹³⁴, sponges¹³⁵, and hydrogels.

Several studies have investigated using keratin-based biomaterials to deliver ciprofloxacin, a broad-spectrum antibiotic commonly used against Gram-negative bacteria. When ciprofloxacin is incorporated into unmodified 20% w/v keratose hydrogels, 40% release is observed in the first 24 hours, and full release occurs after 10 days. This is in comparison to agarose gels (the authors were unable to synthesize collagen hydrogels with the drug), which show a plateau in ciprofloxacin release within 24 hours¹³⁶. Ciprofloxacin release from keratose hydrogels correlates with hydrogel breakdown, and is effective in preventing *Staphylococcus aureus* colony formation for at least 3 weeks in vitro, and at least two weeks in vivo¹³⁶. While this first in vivo study was conducted in mice, ciprofloxacin-loaded keratose hydrogels are similarly effective at preventing bacterial infection in porcine excisional wounds¹³⁷ and thermal burns¹³⁸. It is important to note that some bacterial strains produce keratinases, which have the potential to significantly alter the rate of hydrogel degradation, and therefore impact release profiles. However, if properly designed this feature may provide a method for tuning the release of specific drugs that target different bacterial populations. This can then be coupled with the ability to tune the rate of release using a variety of methods including kerateine-keratose mixtures¹¹¹ or by controlling the levels of disulfide formation in kerateine hydrogels¹¹⁸.

Whether or not antibiotics are delivered, there is a localized immune response that begins almost immediately following wounding^{127, 139}. Mast cells, neutrophils, and macrophages take on numerous roles including killing bacteria, removing apoptotic cells, and releasing cytokines that promote proliferation, angiogenesis, and ECM remodeling. This response begins as an inflammatory response that is important for successful wound healing, but transitions to an anti-inflammatory response as damaged tissue is removed and the process of rebuilding and repair begins. However, biomaterials present in a wound have the potential to prolong the inflammatory phase and inhibit efficient healing.

Limited studies have been performed assessing the immune response of cells to keratin biomaterials. Studies on mast cells¹⁴⁰ and macrophages¹⁴¹ showed no significant response to keratin compared to other commonly used materials. However, in the case of macrophages, keratose coatings can promote monocyte differentiation towards anti-inflammatory 'M2-type' macrophages over pro-inflammatory 'M1-type' macrophages¹⁴². This is in contrast to collagen coatings, which promote equal monocyte differentiation into both M2 and M1 macrophages.

This biased differentiation can potentially be used as a means of mitigating glial scarring by reactive astrocytes following spinal cord injury. After injury, chondroitin sulphate proteoglycans (CSPGs) are produced by astrocytes in a process known as astrogliosis, and act to inhibit further cell damage. Inflammatory cytokines released by 'M1-type' macrophages can lead to excessive CSPG production by reactive astrocytes, hampering effective recovery. In an in vitro model for astrogliosis, media from monocytes grown on keratin films inhibited the process of astrogliosis¹⁴². Thus, it opens up the possibility of controlling glial scarring by targeting and enhancing M2 macrophages, rather than astrocytes. The idea of exploiting biased induction of differentiation is not new, and other studies have used biomaterials to create pro-regenerative microenvironments by biasing the recruitment of alternatively activated macrophages¹⁴³⁻¹⁴⁴.

The final step in wound healing aims to develop new tissue to replace the damaged tissue ¹²⁷. Ideally, this new tissue recreates the form and function of uninjured tissue, and therefore minimal to no scar tissue will be produced. Scar tissue is aesthetically unpleasing, mechanically distinct, and impairs the function of the host tissue. In the case of skin, scar tissue is a biological bandage that lacks sweat glands and hair follicles, while for many internal traumas, scar tissue can lead to serious issues such as arrhythmia ¹⁴⁵ or surgical adhesions ¹⁴⁶.

In addition to glial scarring, keratin biomaterials have been shown to reduce scarring following myocardial infarction, which results in production of scar fibroblasts that replace cardiomyocytes and impair cardiac function ¹⁴⁷. One theory as to how keratin biomaterials reduce scar formation arises from our understanding of the process of keratin extraction. A number of residual cytokines, including TGF- β , NGF, and BMP4 are found in human hair, and keratose hydrogels have been found to release approximately 40pg per 100 μ g of hydrogel. It is postulated that these residual cytokines found in hair may have a role in stimulating cell proliferation, and be one of the reasons why keratin biomaterials elicit beneficial scar reducing effects in vivo ¹⁴⁷.

In terms of skin, scar formation is not only disfiguring, but scar contracture can result in severely impaired movement ¹⁴⁸. Several studies have looked at the ability of keratin or keratin-blend hydrogels and sponges to regenerate functional skin ¹⁴⁹⁻¹⁵⁴. The positive effects of keratin are generally attributed to its ability to promote cell infiltration, proliferation, collagen production, and angiogenesis. However, specifically with regard to scar contraction, kerateine hydrogels can direct increased fibroblast clustering compared to collagen hydrogels with similar shear and storage modulus. This in turn results in considerably less fibroblast contraction in kerateine hydrogels ^{113, 155}, and may be a feature that makes them beneficial for mitigating scar formation. At this point it should be noted that compared to more traditional scaffolds such as collagen and fibronectin, there is still much that is unknown about how keratin-based materials are

manipulating the process of wound repair. Future studies that elucidate more detailed insight into the molecular mechanisms and interactions between keratin-based materials and cells involved with repair will be key to optimizing the design and use of these materials as scaffolds for wound repair and scar reduction.

While skin provides an attractive area for using keratin biomaterials to promote healing, the timescales of interest are relatively short. In many ways, this doesn't take advantage of one of the unique features of these materials, which is the ability to design them to be stable in the body for extended periods of time. This makes keratin biomaterials ideal for applications that require longer-term regeneration, such as the healing of bone, nerves, muscle, and cartilage ¹⁵⁶. Most work looking at bone regeneration involves delivering bone morphogenetic protein-2 (BMP-2), a growth factor that promotes osteoinduction and osteoblast differentiation to the site of injury. Currently, the FDA has approved the use of rhBMP-2 in an resorbable crosslinked collagen sponge for anterior lumbar spinal fusion (INFUSE[®]) ¹⁵⁷. While clinical trials have demonstrated successful ossification and fusion with INFUSE[®], collagen sponges have limited use for longer delivery due to their low binding affinity to rhBMP-2. In addition, INFUSE[®] has not been as effective in other orthopedic surgeries due to a variety of issues including heterotopic ossification (bone tissue formation in soft tissue) ¹⁵⁸. It has long been postulated that the presence of BMP-2 exacerbates heterotopic ossification, however, less than half the amount of ectopic bone is produced when BMP-2 kerateine sponges are used compared to BMP-2 collagen sponges; thus, the biomaterial carrier has a large effect on the clinical outcome ¹⁵⁹. These findings likely arise from kerateine, alkylated kerateine, and keratose hydrogels all demonstrating increased binding affinity for rhBMP-2 compared to collagen hydrogels, and thin films of all keratin derivatives have better adhesion of mice pre-osteoblast cells compared to collagen ¹¹⁸. Kerateine sponges can also minimize leakage of BMP-2 compared to amine-

terminated keratin sponges ¹⁶⁰, highlighting the advantages of this relatively unused biomaterial for longer term growth factor delivery and tissue regeneration.

To directly compare keratose scaffolds with INFUSE[®] collagen sponges, the van Dyke group assessed both scaffold degradation and BMP-2 release profiles ¹⁶¹. While BMP-2 release from keratose scaffolds can be correlated to the degradation of the scaffolds over 1 month, with INFUSE[®] the release of BMP2 was independent of the collagen degradation rate. INFUSE[®] sponges showed slower initial degradation and slower initial release of BMP-2, although a faster subsequent rate of release resulted in similar amounts released after 1 month. Despite BMP-2 release being correlated with scaffold degradation, the structural integrity of keratose scaffolds was found to still be intact after 5 months, whereas at this point in time collagen scaffolds were fully degraded. Comparing femoral gap repair in a rats with both biomaterials, healing times, bone mechanics, bone volume, and density were similar between INFUSE[®] and keratose scaffolds, however there was significantly less adipose tissue found in the healed gap of keratose scaffolds ¹⁶¹. Taken together, these studies demonstrate several key advantages of keratin over collagen-based materials for healing bone.

Keratin-based materials have also shown promise as guides for peripheral nerve repair. They have the potential to replace autografts, which pose complications when harvesting ¹⁶², and they can possibly replace FDA approved conduits, some of which are made of Type I collagen ¹⁶³. However, in vivo studies have been limited and their full potential is still unknown. In the studies that have been performed, keratin-based nerve guides have been found to promote Schwann cell proliferation and migration into the wound site ¹¹⁶. It is not fully known how these materials promote Schwann cell proliferation and migration; it may be that the minute amounts of various growth factors that remain in keratin biomaterials following the extraction process ¹⁴⁷ provide some latent bioactivity, while the keratin itself provides adhesion sites that facilitate the migration of Schwann cells ¹¹⁶. Keratose hydrogels (15% w/v) in silicone,

polycaprolactone, or collagen conduits can also improve nerve recovery after injury in mice ¹¹⁶, ¹⁶⁴, rats ¹⁶⁵⁻¹⁶⁶, rabbits ¹⁶⁷, and monkeys ¹⁶⁸. While there is some variation between model systems, keratose hydrogels can generally decrease conduction delay (time of impulse transmission) and improve conduction motor action potential (amplitude of impulse) compared to saline filled conduits. It seems that the effect of keratose hydrogels is to accelerate the initial repair process, since while differences are observed between keratin conduits, saline conduits, and autografts early on, at 6 months these differences even out. Overall, these animal studies seem to indicate that keratin improves initial healing by promoting early Schwann cell migration but long term recovery is similar to autografts.

Conclusion

Hair follicles are a truly unique source of cells and materials for regenerative medicine. In theory, this accessible mini organ has the potential to provide all the cells and scaffolds necessary for a wide variety of applications in tissue engineering and regenerative medicine, something that is not possible with other tissue and organ sources. The ease of harvesting stem cell populations from donor sites, facile ability to perform iPSC transformation, and abundant supply of keratin make the hair follicle a very underappreciated and underexplored player in the field. To date, there has been some promising work using keratin-based materials to augment tissue repair, while follicular cells have been used in clinical trials to promote tissue repair. However, there is still much that we have to learn from the follicle. By having a natural role in the process of wound repair, along with the ability to promote key processes such as angiogenesis and neurogenesis, this fascinating appendage is a treasure-trove of information regarding key endogenous mechanisms of tissue repair. If we take the time to learn from the follicle, understand how it coordinates such complex processes of repair and regeneration, and elucidate how keratin interacts with our tissues, there is surely a wealth of potential to uncover.

We are excited by this potential, and are confident that new and exciting insights and applications are just around the corner.

Acknowledgements

MTK acknowledges the Whitaker International Program for fellowship support. Research in the laboratory of CAH is funded by the Medical Research Council (M01858X/1) and British Skin Foundation (8030). Research in the laboratory of BDA is funded by Wellcome Trust (109838/Z/15/Z); Rosetrees Trust (A1071), and Diabetes Research & Wellness Foundation (1770). The views contained within are those of the authors, and do not represent the views of funding organizations.

References

1. Schultz, A. H., The Density of Hair in Primates. *Hum Biol* **1931**, 3 (3), 303-321.
2. Szabo, G., The Regional Anatomy of the Human Integument with Special Reference to the Distribution of Hair Follicles, Sweat Glands and Melanocytes. *Phil Trans B* **1967**, 252 (779), 447-485. DOI: 10.1098/rstb.1967.0029.
3. Sandel, A. A., Brief communication: Hair density and body mass in mammals and the evolution of human hairlessness. *Am J Phys Anthropol* **2013**, 152 (1), 145-150. DOI: 10.1002/ajpa.22333.
4. Cash, T. F., Losing Hair, Losing Points - the Effects of Male Pattern Baldness on Social Impression-Formation. *J Appl Soc Psychol* **1990**, 20 (2), 154-167. DOI: 10.1111/j.1559-1816.1990.tb00404.x.
5. Wheeler, P. E., The Loss of Functional Body Hair in Man - the Influence of Thermal Environment, Body Form and Bipedality. *J Hum Evol* **1985**, 14 (1), 23-28. DOI: 10.1016/S0047-2484(85)80091-9.
6. Wheeler, P. E., The Evolution of Bipedality and Loss of Functional Body Hair in Hominids. *J Hum Evol* **1984**, 13 (1), 91-98. DOI: 10.1016/S0047-2484(84)80079-2.
7. Jablonski, N. G., The evolution of human skin and skin color. *Annu Rev Anthropol* **2004**, 33, 585-623. DOI: 10.1146/annurev.anthro.33.070203.143955.

8. Poblet, E.; Jimenez-Acosta, F.; Hardman, J. A.; Escario, E.; Paus, R., Is the eccrine gland an integral, functionally important component of the human scalp pilosebaceous unit? *Exp Dermatol* **2016**, *25* (2), 149-150. DOI: 10.1111/exd.12889.
9. Kamberov, Y. G.; Karlsson, E. K.; Kamberova, G. L.; Lieberman, D. E.; Sabeti, P. C.; Morgan, B. A.; Tabin, C. J., A genetic basis of variation in eccrine sweat gland and hair follicle density. *Proc Natl Acad Sci U S A* **2015**, *112* (32), 9932-9937. DOI: 10.1073/pnas.1511680112.
10. Kligman, A. M., The human hair cycle. *J Invest Dermatol* **1959**, *33*, 307-316. DOI: 10.1038/jid.1959.156
11. Plikus, M. V.; Widelitz, R. B.; Maxson, R.; Chuong, C. M., Analyses of regenerative wave patterns in adult hair follicle populations reveal macro-environmental regulation of stem cell activity. *Int J Dev Biol* **2009**, *53* (5-6), 857-868. DOI: 10.1387/ijdb.072564mp.
12. Dhouailly, D.; Sengel, P., [Morphogenesis of feather and hair, studied by means of heterospecific associations of dermis and epidermis between chicken and mice]. *C R Acad Sci Hebd Seances Acad Sci D* **1972**, *275* (3), 479-482.
13. Higgins, C. A.; Petukhova, L.; Harel, S.; Ho, Y. Y.; Drill, E.; Shapiro, L.; Wajid, M.; Christiano, A. M., FGF5 is a crucial regulator of hair length in humans. *Proc Natl Acad Sci U S A* **2014**, *111* (29), 10648-10653. DOI: 10.1073/pnas.1402862111.
14. Stenn, K., Exogen is an active, separately controlled phase of the hair growth cycle. *J Am Acad Dermatol* **2005**, *52* (2), 374-375. DOI: 10.1016/j.jaad.2004.07.040.
15. Higgins, C. A.; Westgate, G. E.; Jahoda, C. A., From telogen to exogen: mechanisms underlying formation and subsequent loss of the hair club fiber. *J Invest Dermatol* **2009**, *129* (9), 2100-2108. DOI: 10.1038/jid.2009.66.
16. Widelitz, R. B.; Veltmaat, J. M.; Mayer, J. A.; Foley, J.; Chuong, C. M., Mammary glands and feathers: Comparing two skin appendages which help define novel classes during vertebrate evolution. *Semin Cell Dev Biol* **2007**, *18* (2), 255-266. DOI: 10.1016/j.semcdb.2007.02.005.
17. Van Scott, E. J.; Reinertson, R. P.; Steinmuller, R., The growing hair roots of the human scalp and morphologic changes therein following amethopterin therapy. *J Invest Dermatol* **1957**, *29* (3), 197-204. DOI: 10.1038/jid.1957.87
18. Kligman, A. M., Pathologic dynamics of human hair loss. I. Telogen effluvium. *Arch Dermatol* **1961**, *83*, 175-198. DOI: 10.1001/archderm.1961.01580080005001
19. Cotsarelis, G.; Sun, T. T.; Lavker, R. M., Label-retaining cells reside in the bulge area of pilosebaceous unit: implications for follicular stem cells, hair cycle, and skin carcinogenesis. *Cell* **1990**, *61* (7), 1329-1337. DOI: 10.1016/0092-8674(90)90696-C

20. Lyle, S.; Christofidou-Solomidou, M.; Liu, Y.; Elder, D. E.; Albelda, S.; Cotsarelis, G., Human hair follicle bulge cells are biochemically distinct and possess an epithelial stem cell phenotype. *J Invest Dermatol Symp Proc* **1999**, *4* (3), 296-301. DOI: 10.1038/sj.jidsp.5640233
21. Morris, R. J.; Liu, Y.; Marles, L.; Yang, Z.; Trempus, C.; Li, S.; Lin, J. S.; Sawicki, J. A.; Cotsarelis, G., Capturing and profiling adult hair follicle stem cells. *Nat Biotechnol* **2004**, *22* (4), 411-417. DOI: 10.1038/nbt950.
22. Greco, V.; Chen, T.; Rendl, M.; Schober, M.; Pasolli, H. A.; Stokes, N.; Dela Cruz-Racelis, J.; Fuchs, E., A two-step mechanism for stem cell activation during hair regeneration. *Cell Stem Cell* **2009**, *4* (2), 155-169. DOI: 10.1016/j.stem.2008.12.009.
23. Legue, E.; Nicolas, J. F., Hair follicle renewal: organization of stem cells in the matrix and the role of stereotyped lineages and behaviors. *Development* **2005**, *132* (18), 4143-4154. DOI: 10.1242/dev.01975.
24. Sequeira, I.; Nicolas, J. F., Redefining the structure of the hair follicle by 3D clonal analysis. *Development* **2012**, *139* (20), 3741-3751. DOI: 10.1242/dev.081091.
25. Tobin, D. J.; Foitzik, K.; Reinheckel, T.; Mecklenburg, L.; Botchkarev, V. A.; Peters, C.; Paus, R., The lysosomal protease cathepsin L is an important regulator of keratinocyte and melanocyte differentiation during hair follicle morphogenesis and cycling. *Am J Pathol* **2002**, *160* (5), 1807-1821. DOI: 10.1016/S0002-9440(10)61127-3.
26. Moll, R.; Divo, M.; Langbein, L., The human keratins: biology and pathology. *Histochem Cell Biol* **2008**, *129* (6), 705-733. DOI: 10.1007/s00418-008-0435-6.
27. Nishimura, E. K.; Jordan, S. A.; Oshima, H.; Yoshida, H.; Osawa, M.; Moriyama, M.; Jackson, I. J.; Barrandon, Y.; Miyachi, Y.; Nishikawa, S., Dominant role of the niche in melanocyte stem-cell fate determination. *Nature* **2002**, *416* (6883), 854-860. DOI: 10.1038/416854a.
28. Schepeler, T.; Page, M. E.; Jensen, K. B., Heterogeneity and plasticity of epidermal stem cells. *Development* **2014**, *141* (13), 2559-2567. DOI: 10.1242/dev.104588.
29. Kretzschmar, K.; Watt, F. M., Markers of epidermal stem cell subpopulations in adult mammalian skin. *Cold Spring Harb Perspect Med* **2014**, *4* (10). DOI: 10.1101/cshperspect.a013631.
30. Solanas, G.; Benitah, S. A., Regenerating the skin: a task for the heterogeneous stem cell pool and surrounding niche. *Nat Rev Mol Cell Biol* **2013**, *14* (11), 737-748. DOI: 10.1038/nrm3675.

31. Jensen, K. B.; Collins, C. A.; Nascimento, E.; Tan, D. W.; Frye, M.; Itami, S.; Watt, F. M., Lrig1 expression defines a distinct multipotent stem cell population in mammalian epidermis. *Cell Stem Cell* **2009**, *4* (5), 427-439. DOI: 10.1016/j.stem.2009.04.014.
32. Veniaminova, N. A.; Vagnozzi, A. N.; Kopinke, D.; Do, T. T.; Murtaugh, L. C.; Maillard, I.; Dlugosz, A. A.; Reiter, J. F.; Wong, S. Y., Keratin 79 identifies a novel population of migratory epithelial cells that initiates hair canal morphogenesis and regeneration. *Development* **2013**, *140* (24), 4870-4880. DOI: 10.1242/dev.101725.
33. Joost, S.; Zeisel, A.; Jacob, T.; Sun, X.; La Manno, G.; Lonnerberg, P.; Linnarsson, S.; Kasper, M., Single-Cell Transcriptomics Reveals that Differentiation and Spatial Signatures Shape Epidermal and Hair Follicle Heterogeneity. *Cell Syst* **2016**, *3* (3), 221-237 e229. DOI: 10.1016/j.cels.2016.08.010.
34. Karthaus, W. R.; Iaquinta, P. J.; Drost, J.; Gracanin, A.; van Boxtel, R.; Wongvipat, J.; Dowling, C. M.; Gao, D.; Begthel, H.; Sachs, N.; Vries, R. G.; Cuppen, E.; Chen, Y.; Sawyers, C. L.; Clevers, H. C., Identification of multipotent luminal progenitor cells in human prostate organoid cultures. *Cell* **2014**, *159* (1), 163-175. DOI: 10.1016/j.cell.2014.08.017.
35. Driskell, R. R.; Clavel, C.; Rendl, M.; Watt, F. M., Hair follicle dermal papilla cells at a glance. *J Cell Sci* **2011**, *124* (Pt 8), 1179-1182. DOI: 10.1242/jcs.082446.
36. Parakkal, P. F., Ultrastructural changes of the basal lamina during the hair growth cycle. *J Cell Biol* **1969**, *40* (2), 561-564. DOI: 10.1083/jcb.40.2.561
37. Driskell, R. R.; Lichtenberger, B. M.; Hoste, E.; Kretzschmar, K.; Simons, B. D.; Charalambous, M.; Ferron, S. R.; Herault, Y.; Pavlovic, G.; Ferguson-Smith, A. C.; Watt, F. M., Distinct fibroblast lineages determine dermal architecture in skin development and repair. *Nature* **2013**, *504* (7479), 277-281. DOI: 10.1038/nature12783.
38. Werner, S.; Krieg, T.; Smola, H., Keratinocyte-fibroblast interactions in wound healing. *J Invest Dermatol* **2007**, *127* (5), 998-1008. DOI: 10.1038/sj.jid.5700786.
39. Jahoda, C. A.; Horne, K. A.; Oliver, R. F., Induction of hair growth by implantation of cultured dermal papilla cells. *Nature* **1984**, *311* (5986), 560-562.
40. Torkamani, N.; Rufaut, N.; Jones, L.; Sinclair, R., The arrector pili muscle, the bridge between the follicular stem cell niche and the interfollicular epidermis. *Anat Sci Int* **2017**, *92* (1), 151-158. DOI: 10.1007/s12565-016-0359-5.
41. Fujiwara, H.; Ferreira, M.; Donati, G.; Marciano, D. K.; Linton, J. M.; Sato, Y.; Hartner, A.; Sekiguchi, K.; Reichardt, L. F.; Watt, F. M., The basement membrane of hair follicle stem cells is a muscle cell niche. *Cell* **2011**, *144* (4), 577-589. DOI: 10.1016/j.cell.2011.01.014.

42. Torkamani, N.; Rufaut, N. W.; Jones, L.; Sinclair, R. D., Beyond goosebumps: does the arrector pili muscle have a role in hair loss? *Int J Trichology* **2014**, *6* (3), 88-94. DOI: 10.4103/0974-7753.139077.
43. Torkamani, N.; Rufaut, N. W.; Jones, L.; Sinclair, R., Destruction of the arrector pili muscle and fat infiltration in androgenic alopecia. *Br J Dermatol* **2014**, *170* (6), 1291-1298. DOI: 10.1111/bjd.12921.
44. Plikus, M. V.; Chuong, C. M., Complex hair cycle domain patterns and regenerative hair waves in living rodents. *J Invest Dermatol* **2008**, *128* (5), 1071-1080. DOI: 10.1038/sj.jid.5701180.
45. Chase, H. B.; Montagna, W.; Malone, J. D., Changes in the skin in relation to the hair growth cycle. *Anat Rec* **1953**, *116* (1), 75-81. DOI: 10.1002/ar.1091160107
46. Moffat, G. H., The growth of hair follicles and its relation to the adjacent dermal structures. *J Anat* **1968**, *102* (Pt 3), 527-540.
47. Rognoni, E.; Gomez, C.; Pisco, A. O.; Rawlins, E. L.; Simons, B. D.; Watt, F. M.; Driskell, R. R., Inhibition of beta-catenin signalling in dermal fibroblasts enhances hair follicle regeneration during wound healing. *Development* **2016**, *143* (14), 2522-2535. DOI: 10.1242/dev.131797.
48. Mecklenburg, L.; Tobin, D. J.; Muller-Rover, S.; Handjiski, B.; Wendt, G.; Peters, E. M. J.; Pohl, S.; Moll, I.; Paus, R., Active hair growth (Anagen) is associated with angiogenesis. *J Invest Dermatol* **2000**, *114* (5), 909-916. DOI: DOI 10.1046/j.1523-1747.2000.00954.x.
49. Ellis, R. A.; Moretti, G., Vascular patterns associated with catagen hair follicles in the human scalp. *Ann N Y Acad Sci* **1959**, *83*, 448-457. DOI: 10.1111/j.1749-6632.1960.tb40918.x
50. Kozłowska, U.; Blume-Peytavi, U.; Kodelja, V.; Sommer, C.; Goerdts, S.; Majewski, S.; Jablonska, S.; Orfanos, C. E., Expression of vascular endothelial growth factor (VEGF) in various compartments of the human hair follicle. *Arch Dermatol Res* **1998**, *290* (12), 661-668. DOI: 10.1007/s004030050370
51. Jahoda, C. A.; Christiano, A. M., Niche crosstalk: intercellular signals at the hair follicle. *Cell* **2011**, *146* (5), 678-681. DOI: 10.1016/j.cell.2011.08.020.
52. Botchkarev, V. A.; Eichmuller, S.; Johansson, O.; Paus, R., Hair cycle-dependent plasticity of skin and hair follicle innervation in normal murine skin. *J Comp Neurol* **1997**, *386* (3), 379-395. DOI: 10.1002/(SICI)1096-9861(19970929)386:3<379::AID-CNE4>3.0.CO;2-Z
53. Castellana, D.; Paus, R.; Perez-Moreno, M., Macrophages contribute to the cyclic activation of adult hair follicle stem cells. *PLoS Biol* **2014**, *12* (12), e1002002. DOI: 10.1371/journal.pbio.1002002.

54. Festa, E.; Fretz, J.; Berry, R.; Schmidt, B.; Rodeheffer, M.; Horowitz, M.; Horsley, V., Adipocyte lineage cells contribute to the skin stem cell niche to drive hair cycling. *Cell* **2011**, *146* (5), 761-771. DOI: 10.1016/j.cell.2011.07.019.
55. Donati, G.; Proserpio, V.; Lichtenberger, B. M.; Natsuga, K.; Sinclair, R.; Fujiwara, H.; Watt, F. M., Epidermal Wnt/beta-catenin signaling regulates adipocyte differentiation via secretion of adipogenic factors. *Proc Natl Acad Sci U S A* **2014**, *111* (15), E1501-1509. DOI: 10.1073/pnas.1312880111.
56. Ansell, D. M.; Kloepper, J. E.; Thomason, H. A.; Paus, R.; Hardman, M. J., Exploring the "hair growth-wound healing connection": anagen phase promotes wound re-epithelialization. *J Invest Dermatol* **2011**, *131* (2), 518-528. DOI: 10.1038/jid.2010.291.
57. Gay, D.; Kwon, O.; Zhang, Z.; Spata, M.; Plikus, M. V.; Holler, P. D.; Ito, M.; Yang, Z.; Treffeisen, E.; Kim, C. D.; Nace, A.; Zhang, X.; Baratono, S.; Wang, F.; Ornitz, D. M.; Millar, S. E.; Cotsarelis, G., Fgf9 from dermal gammadelta T cells induces hair follicle neogenesis after wounding. *Nat Med* **2013**, *19* (7), 916-923. DOI: 10.1038/nm.3181.
58. Bishop, G. H., Regeneration after experimental removal of skin in man. *Am J Anat* **1945**, *76* (2), 153-181. DOI: 10.1002/aja.1000760202.
59. Ito, M.; Liu, Y.; Yang, Z.; Nguyen, J.; Liang, F.; Morris, R. J.; Cotsarelis, G., Stem cells in the hair follicle bulge contribute to wound repair but not to homeostasis of the epidermis. *Nat Med* **2005**, *11* (12), 1351-1354. DOI: 10.1038/nm1328.
60. Tumber, T.; Guasch, G.; Greco, V.; Blanpain, C.; Lowry, W. E.; Rendl, M.; Fuchs, E., Defining the epithelial stem cell niche in skin. *Science* **2004**, *303* (5656), 359-363. DOI: 10.1126/science.1092436.
61. Martinez, M. L.; Escario, E.; Poblet, E.; Sanchez, D.; Buchon, F. F.; Izeta, A.; Jimenez, F., Hair follicle-containing punch grafts accelerate chronic ulcer healing: A randomized controlled trial. *J Am Acad Dermatol* **2016**, *75* (5), 1007-1014. DOI: 10.1016/j.jaad.2016.02.1161.
62. Jimenez, F.; Poblet, E.; Izeta, A., Reflections on how wound healing-promoting effects of the hair follicle can be translated into clinical practice. *Exp Dermatol* **2015**, *24* (2), 91-94. DOI: 10.1111/exd.12521.
63. Yang, Z.; Liu, J.; Zhu, N.; Qi, F., Comparison between hair follicles and split-thickness skin grafts in cutaneous wound repair. *Int J Clin Exp Med* **2015**, *8* (9), 15822-15827.
64. Rompolas, P.; Deschene, E. R.; Zito, G.; Gonzalez, D. G.; Saotome, I.; Haberman, A. M.; Greco, V., Live imaging of stem cell and progeny behaviour in physiological hair-follicle regeneration. *Nature* **2012**, *487* (7408), 496-499. DOI: 10.1038/nature11218.

65. Higgins, C. A.; Chen, J. C.; Cerise, J. E.; Jahoda, C. A.; Christiano, A. M., Microenvironmental reprogramming by three-dimensional culture enables dermal papilla cells to induce de novo human hair-follicle growth. *Proc Natl Acad Sci U S A* **2013**, *110* (49), 19679-19688. DOI: 10.1073/pnas.1309970110.
66. Jahoda, C. A.; Oliver, R. F.; Reynolds, A. J.; Forrester, J. C.; Gillespie, J. W.; Cserhalmi-Friedman, P. B.; Christiano, A. M.; Horne, K. A., Trans-species hair growth induction by human hair follicle dermal papillae. *Exp Dermatol* **2001**, *10* (4), 229-237. DOI: 10.1034/j.1600-0625.2001.100402.x
67. Reynolds, A. J.; Lawrence, C.; Cserhalmi-Friedman, P. B.; Christiano, A. M.; Jahoda, C. A., Trans-gender induction of hair follicles. *Nature* **1999**, *402* (6757), 33-34. DOI: 10.1038/46938.
68. Christoph, T.; Muller-Rover, S.; Audring, H.; Tobin, D. J.; Hermes, B.; Cotsarelis, G.; Ruckert, R.; Paus, R., The human hair follicle immune system: cellular composition and immune privilege. *Br J Dermatol* **2000**, *142* (5), 862-873. DOI: 10.1046/j.1365-2133.2000.03464.x
69. Jahoda, C. A.; Reynolds, A. J., Hair follicle dermal sheath cells: unsung participants in wound healing. *Lancet* **2001**, *358* (9291), 1445-1448. DOI: 10.1016/S0140-6736(01)06532-1.
70. Rendl, M.; Polak, L.; Fuchs, E., BMP signaling in dermal papilla cells is required for their hair follicle-inductive properties. *Genes Dev* **2008**, *22* (4), 543-557. DOI: 10.1101/gad.1614408.
71. Higgins, C. A.; Roger, M.; Hill, R.; Ali-Khan, A. S.; Garlick, J.; Christiano, A. M.; Jahoda, C. A., Multifaceted role of hair follicle dermal cells in bioengineered skins. *Br J Dermatol* **2016**. DOI: 10.1111/bjd.15087.
72. Gallico, G. G., 3rd; O'Connor, N. E.; Compton, C. C.; Kehinde, O.; Green, H., Permanent coverage of large burn wounds with autologous cultured human epithelium. *N Engl J Med* **1984**, *311* (7), 448-451. DOI: 10.1056/NEJM198408163110706.
73. Richardson, G. D.; Arnott, E. C.; Whitehouse, C. J.; Lawrence, C. M.; Hole, N.; Jahoda, C. A., Cultured cells from the adult human hair follicle dermis can be directed toward adipogenic and osteogenic differentiation. *J Invest Dermatol* **2005**, *124* (5), 1090-1091. DOI: 10.1111/j.0022-202X.2005.23734.x.
74. Ma, D.; Kua, J. E.; Lim, W. K.; Lee, S. T.; Chua, A. W., In vitro characterization of human hair follicle dermal sheath mesenchymal stromal cells and their potential in enhancing diabetic wound healing. *Cytotherapy* **2015**, *17* (8), 1036-1051. DOI: 10.1016/j.jcyt.2015.04.001.
75. Jahoda, C. A.; Whitehouse, J.; Reynolds, A. J.; Hole, N., Hair follicle dermal cells differentiate into adipogenic and osteogenic lineages. *Exp Dermatol* **2003**, *12* (6), 849-859. DOI: 10.1111/j.0906-6705.2003.00161.x

76. Mistriotis, P.; Andreadis, S. T., Hair follicle: a novel source of multipotent stem cells for tissue engineering and regenerative medicine. *Tissue Eng Part B Rev* **2013**, *19* (4), 265-278. DOI: 10.1089/ten.TEB.2012.0422.
77. Elliott, K.; Stephenson, T. J.; Messenger, A. G., Differences in hair follicle dermal papilla volume are due to extracellular matrix volume and cell number: implications for the control of hair follicle size and androgen responses. *J Invest Dermatol* **1999**, *113* (6), 873-877. DOI: 10.1046/j.1523-1747.1999.00797.x.
78. Messenger, A. G., The culture of dermal papilla cells from human hair follicles. *Br J Dermatol* **1984**, *110* (6), 685-689. DOI: 10.1111/j.1365-2133.1984.tb04705.x
79. Bassukas, I. D.; Arai, A.; Schell, H.; Hornstein, O. P., Growth and cell kinetics of human hair papilla cells in vitro. An autoradiographic and flow cytometric study. *Cell Prolif* **1991**, *24* (4), 367-374. DOI: 10.1111/j.1365-2184.1991.tb01165.x
80. Gamie, Z.; Tran, G. T.; Vyzas, G.; Korres, N.; Heliotis, M.; Mantalaris, A.; Tsiridis, E., Stem cells combined with bone graft substitutes in skeletal tissue engineering. *Expert Opin Biol Ther* **2012**, *12* (6), 713-729. DOI: 10.1517/14712598.2012.679652.
81. Ng, M. H.; Duski, S.; Tan, K. K.; Yusof, M. R.; Low, K. C.; Rose, I. M.; Mohamed, Z.; Bin Saim, A.; Idrus, R. B., Repair of segmental load-bearing bone defect by autologous mesenchymal stem cells and plasma-derived fibrin impregnated ceramic block results in early recovery of limb function. *Biomed Res Int* **2014**, *2014*, 345910. DOI: 10.1155/2014/345910.
82. Agabalyan, N. A.; Borys, B. S.; Sparks, H. D.; Boon, K.; Raharjo, E. W.; Abbasi, S.; Kallos, M. S.; Biernaskie, J., Enhanced Expansion and Sustained Inductive Function of Skin-Derived Precursor Cells in Computer-Controlled Stirred Suspension Bioreactors. *Stem Cells Transl Med* **2017**, *6* (2), 434-443. DOI: 10.5966/sctm.2016-0133.
83. Murphy, W. L.; McDevitt, T. C.; Engler, A. J., Materials as stem cell regulators. *Nat Mater* **2014**, *13* (6), 547-557. DOI: 10.1038/nmat3937.
84. Celiz, A. D.; Smith, J. G.; Langer, R.; Anderson, D. G.; Winkler, D. A.; Barrett, D. A.; Davies, M. C.; Young, L. E.; Denning, C.; Alexander, M. R., Materials for stem cell factories of the future. *Nat Mater* **2014**, *13* (6), 570-579. DOI: 10.1038/nmat3972.
85. Blanpain, C.; Fuchs, E., Epidermal homeostasis: a balancing act of stem cells in the skin. *Nat Rev Mol Cell Biol* **2009**, *10* (3), 207-217. DOI: 10.1038/nrm2636.
86. Horsley, V.; O'Carroll, D.; Tooze, R.; Ohinata, Y.; Saitou, M.; Obukhanych, T.; Nussenzweig, M.; Tarakhovskiy, A.; Fuchs, E., Blimp1 defines a progenitor population that governs cellular input to the sebaceous gland. *Cell* **2006**, *126* (3), 597-609. DOI: 10.1016/j.cell.2006.06.048.

87. Lenoir, M. C.; Bernard, B. A.; Pautrat, G.; Darmon, M.; Shroot, B., Outer Root Sheath-Cells of Human-Hair Follicle Are Able to Regenerate a Fully Differentiated Epidermis *In vitro*. *Dev Biol* **1988**, *130* (2), 610-620. DOI: 10.1016/0012-1606(88)90356-9.
88. Limat, A.; Hunziker, T., Use of epidermal equivalents generated from follicular outer root sheath cells in vitro and for autologous grafting of chronic wounds. *Cells Tissues Organs* **2002**, *172* (2), 79-85. DOI: 10.1159/000065615.
89. Limat, A.; Salomon, D.; French, L.; Saurat, J. H.; Hunziker, T., Closure of chronic wounds with epidermal equivalents generated from cultured autologous outer root sheath cells. *J Invest Dermatol* **1998**, *110* (4), 677-677.
90. Adam, R. C.; Yang, H.; Rockowitz, S.; Larsen, S. B.; Nikolova, M.; Oristian, D. S.; Polak, L.; Kadaja, M.; Asare, A.; Zheng, D.; Fuchs, E., Pioneer factors govern super-enhancer dynamics in stem cell plasticity and lineage choice. *Nature* **2015**, *521* (7552), 366-370. DOI: 10.1038/nature14289.
91. Hnisz, D.; Abraham, B. J.; Lee, T. I.; Lau, A.; Saint-Andre, V.; Sigova, A. A.; Hoke, H. A.; Young, R. A., Super-enhancers in the control of cell identity and disease. *Cell* **2013**, *155* (4), 934-947. DOI: 10.1016/j.cell.2013.09.053.
92. Aasen, T.; Izpisua Belmonte, J. C., Isolation and cultivation of human keratinocytes from skin or plucked hair for the generation of induced pluripotent stem cells. *Nat Protoc* **2010**, *5* (2), 371-382. DOI: 10.1038/nprot.2009.241.
93. Takahashi, K.; Yamanaka, S., Induction of pluripotent stem cells from mouse embryonic and adult fibroblast cultures by defined factors. *Cell* **2006**, *126* (4), 663-676. DOI: 10.1016/j.cell.2006.07.024.
94. Higgins, C. A.; Itoh, M.; Inoue, K.; Richardson, G. D.; Jahoda, C. A.; Christiano, A. M., Reprogramming of human hair follicle dermal papilla cells into induced pluripotent stem cells. *J Invest Dermatol* **2012**, *132* (6), 1725-1727. DOI: 10.1038/jid.2012.12.
95. Tsai, S. Y.; Bouwman, B. A.; Ang, Y. S.; Kim, S. J.; Lee, D. F.; Lemischka, I. R.; Rendl, M., Single transcription factor reprogramming of hair follicle dermal papilla cells to induced pluripotent stem cells. *Stem Cells* **2011**, *29* (6), 964-971. DOI: 10.1002/stem.649.
96. Tsai, S. Y.; Clavel, C.; Kim, S.; Ang, Y. S.; Grisanti, L.; Lee, D. F.; Kelley, K.; Rendl, M., Oct4 and klf4 reprogram dermal papilla cells into induced pluripotent stem cells. *Stem Cells* **2010**, *28* (2), 221-228. DOI: 10.1002/stem.281.
97. Kim, J. B.; Sebastiano, V.; Wu, G.; Arauzo-Bravo, M. J.; Sasse, P.; Gentile, L.; Ko, K.; Ruau, D.; Ehrlich, M.; van den Boom, D.; Meyer, J.; Hubner, K.; Bernemann, C.; Ortmeier, C.;

- Zenke, M.; Fleischmann, B. K.; Zaehres, H.; Scholer, H. R., Oct4-induced pluripotency in adult neural stem cells. *Cell* **2009**, *136* (3), 411-419. DOI: 10.1016/j.cell.2009.01.023.
98. Fuchs, E.; Weber, K., Intermediate filaments: structure, dynamics, function, and disease. *Annu Rev Biochem* **1994**, *63*, 345-382. DOI: 10.1146/annurev.bi.63.070194.002021.
99. Wang, B.; Yang, W.; McKittrick, J.; Meyers, M. A., Keratin: Structure, mechanical properties, occurrence in biological organisms, and efforts at bioinspiration. *Prog Mater Sci* **2016**, *76*, 229-318. DOI: 10.1016/j.pmatsci.2015.06.001.
100. Marshall, R. C.; Orwin, D. F. G.; Gillespie, J. M., Structure and Biochemistry of Mammalian Hard Keratin. *Electron Microsc Rev* **1991**, *4* (1), 47-83. DOI: Doi 10.1016/0892-0354(91)90016-6.
101. Hilterhaus-Bong, S.; Zahn, H., Contributions to the chemistry of human hair. 1. Analyses of cystine, cysteine and cystine oxides in untreated human hair. *Int J Cosmet Sci* **1987**, *9* (3), 101-110. DOI: 10.1111/j.1467-2494.1987.tb00467.x.
102. Wolfram, L. J., Human hair: a unique physicochemical composite. *J Am Acad Dermatol* **2003**, *48* (6 Suppl), S106-114. DOI: 10.1067/mjd.2003.276.
103. Oshima, R. G., Apoptosis and keratin intermediate filaments. *Cell Death Differ* **2002**, *9* (5), 486-492. DOI: 10.1038/sj/cdd/4400988.
104. Gupta, R.; Ramnani, P., Microbial keratinases and their prospective applications: an overview. *Appl Microbiol Biotechnol* **2006**, *70* (1), 21-33. DOI: 10.1007/s00253-005-0239-8.
105. Mateju, E.; Duchanova, S.; Kovac, P.; Moravansky, N.; Spitz, D. J., Fatal case of Rapunzel syndrome in neglected child. *Forensic Sci Int* **2009**, *190* (1-3), e5-7. DOI: 10.1016/j.forsciint.2009.05.008.
106. Hodge, K.; Have, S. T.; Hutton, L.; Lamond, A. I., Cleaning up the masses: exclusion lists to reduce contamination with HPLC-MS/MS. *J Proteomics* **2013**, *88*, 92-103. DOI: 10.1016/j.jprot.2013.02.023.
107. Idris, A.; Vijayaraghavan, R.; Rana, U. A.; Fredericks, D.; Patti, A. F.; MacFarlane, D. R., Dissolution of feather keratin in ionic liquids. *Green Chem* **2013**, *15* (2), 525-534. DOI: 10.1039/c2gc36556a.
108. Nakamura, A.; Arimoto, M.; Takeuchi, K.; Fujii, T., A Rapid Extraction Procedure of Human Hair Proteins and Identification of Phosphorylated Species. *Biol Pharm Bull* **2002**, *25* (5), 569-572. DOI: 10.1248/bpb.25.569.
109. Hill, P.; Brantley, H.; van Dyke, M., Some properties of keratin biomaterials: Kerateines. *Biomaterials* **2010**, *31*, 585-593. DOI: 10.1016/j.biomaterials.2009.09.076.

110. de Guzman, R. C.; Merrill, M. R.; Richter, J. R.; Hamzi, R. I.; Greengauz-Roberts, O. K.; Van Dyke, M. E., Mechanical and biological properties of keratose biomaterials. *Biomaterials* **2011**, *32* (32), 8205-8217. DOI: 10.1016/j.biomaterials.2011.07.054.
111. Ham, T. R.; Lee, R. T.; Han, S.; Haque, S.; Vodovotz, Y.; Gu, J.; Burnett, L. R.; Tomblyn, S.; Saul, J. M., Tunable Keratin Hydrogels for Controlled Erosion and Growth Factor Delivery. *Biomacromolecules* **2016**, *17* (1), 225-236. DOI: 10.1021/acs.biomac.5b01328.
112. Hartrianti, P.; Ling, L.; Goh, L. M. M.; Ow, K. S. A.; Samsonraj, R. M.; Sow, W. T.; Wang, S.; Nurcombe, V.; Cool, S. M.; Ng, K. W., Modulating Mesenchymal Stem Cell Behavior Using Human Hair Keratin-Coated Surfaces. *Stem Cells Int* **2015**. DOI: Artn 752424
10.1155/2015/752424.
113. Wang, S.; Taraballi, F.; Tan, L. P.; Ng, K. W., Human keratin hydrogels support fibroblast attachment and proliferation in vitro. *Cell Tissue Res* **2012**, *347* (3), 795-802. DOI: 10.1007/s00441-011-1295-2.
114. Richter, J. R.; de Guzman, R. C.; Van Dyke, M. E., Mechanisms of hepatocyte attachment to keratin biomaterials. *Biomaterials* **2011**, *32* (30), 7555-7561. DOI: 10.1016/j.biomaterials.2011.06.061.
115. Rahmany, M. B.; Hantgan, R. R.; Van Dyke, M., A mechanistic investigation of the effect of keratin-based hemostatic agents on coagulation. *Biomaterials* **2013**, *34* (10), 2492-2500. DOI: 10.1016/j.biomaterials.2012.12.008.
116. Sierpinski, P.; Garrett, J.; Ma, J.; Apel, P.; Klorig, D.; Smith, T.; Koman, L. A.; Atala, A.; Van Dyke, M., The use of keratin biomaterials derived from human hair for the promotion of rapid regeneration of peripheral nerves. *Biomaterials* **2008**, *29* (1), 118-128. DOI: 10.1016/j.biomaterials.2007.08.023.
117. Verma, V.; Verma, P.; Ray, P.; Ray, A. R., Preparation of scaffolds from human hair proteins for tissue-engineering applications. *Biomed Mater* **2008**, *3*, 025007. DOI: 10.1088/1748-6041/3/2/025007.
118. Han, S.; Ham, T. R.; Haque, S.; Sparks, J. L.; Saul, J. M., Alkylation of human hair keratin for tunable hydrogel erosion and drug delivery in tissue engineering applications. *Acta Biomater* **2015**, *23*, 201-213. DOI: 10.1016/j.actbio.2015.05.013.
119. Tachibana, A.; Furuta, Y.; Takeshima, H.; Tanabe, T.; Yamauchi, K., Fabrication of wool keratin sponge scaffolds for long-term cell cultivation. *J Biotechnol* **2002**, *93* (2), 165-170. DOI: Doi 10.1016/S0168-1656(01)00395-9.
120. Burnett, L. R.; Rahmany, M. B.; Richter, J. R.; Aboushwareb, T. A.; Eberli, D.; Ward, C. L.; Orlando, G.; Hantgan, R. R.; Van Dyke, M. E., Hemostatic properties and the role of cell

- receptor recognition in human hair keratin protein hydrogels. *Biomaterials* **2013**, *34* (11), 2632-2640. DOI: 10.1016/j.biomaterials.2012.12.022.
121. Borrelli, M.; Joepen, N.; Reich, S.; Finis, D.; Schoppe, M.; Geerling, G.; Schrader, S., Keratin films for ocular surface reconstruction: Evaluation of biocompatibility in an in-vivo model. *Biomaterials* **2015**, *42*, 112-120. DOI: 10.1016/j.biomaterials.2014.11.038.
122. Borrelli, M.; Reichl, S.; Feng, Y. Q.; Schargus, M.; Schrader, S.; Geerling, G., In vitro characterization and ex vivo surgical evaluation of human hair keratin films in ocular surface reconstruction after sterilization processing. *J Mater Sci-Mater M* **2013**, *24* (1), 221-230. DOI: 10.1007/s10856-012-4774-4.
123. Reichl, S.; Borrelli, M.; Geerling, G., Keratin films for ocular surface reconstruction. *Biomaterials* **2011**, *32* (13), 3375-3386. DOI: 10.1016/j.biomaterials.2011.01.052.
124. Lusiana; Reichl, S.; Muller-Goymann, C. C., Infected nail plate model made of human hair keratin for evaluating the efficacy of different topical antifungal formulations against *Trichophyton rubrum* in vitro. *Eur J Pharm Biopharm* **2013**, *84* (3), 599-605. DOI: 10.1016/j.ejpb.2013.01.015.
125. Lusiana; Reichl, S.; Muller-Goymann, C. C., Keratin film made of human hair as a nail plate model for studying drug permeation. *Eur J Pharm Biopharm* **2011**, *78* (3), 432-440. DOI: 10.1016/j.ejpb.2011.01.022.
126. Pop, M. A.; Almquist, B. D., Biomaterials: A potential pathway to healing chronic wounds? *Exp Dermatol* **2017**. DOI: 10.1111/exd.13290.
127. Singer, A. J.; Clark, R. A., Cutaneous wound healing. *N Engl J Med* **1999**, *341* (10), 738-746. DOI: 10.1056/NEJM199909023411006.
128. Aboushwareb, T.; Eberli, D.; Ward, C.; Broda, C.; Holcomb, J.; Atala, A.; Van Dyke, M., A Keratin Biomaterial Gel Hemostat Derived from Human Hair: Evaluation in a Rabbit Model of Lethal Liver Injury. *J Biomed Mater Res B* **2009**, *90b* (1), 45-54. DOI: 10.1002/jbm.b.31251.
129. Burnett, L. R.; Richter, J. G.; Rahmany, M. B.; Soler, R.; Steen, J. A.; Orlando, G.; Abouswareb, T.; Van Dyke, M. E., Novel keratin (KeraStat) and polyurethane (Nanosan(R)-Sorb) biomaterials are hemostatic in a porcine lethal extremity hemorrhage model. *J Biomater Appl* **2014**, *28* (6), 869-879. DOI: 10.1177/0885328213484975.
130. Luo, T. T.; Hao, S. L.; Chen, X. L.; Wang, J.; Yang, Q.; Wang, Y. Z.; Weng, Y. L.; Wei, H. M.; Zhou, J.; Wang, B. C., Development and assessment of kerateine nanoparticles for use as a hemostatic agent. *Mat Sci Eng C-Mater* **2016**, *63*, 352-358. DOI: 10.1016/j.msec.2016.03.007.

131. Nunez, F.; Trach, S.; Burnett, L.; Handa, R.; Van Dyke, M.; Callahan, M.; Smith, T., Vasoactive Properties of Keratin-Derived Compounds. *Microcirculation* **2011**, *18* (8), 663-669. DOI: 10.1111/j.1549-8719.2011.00135.x.
132. Butera, D.; Cook, K. M.; Chiu, J.; Wong, J. W. H.; Hogg, P. J., Control of blood proteins by functional disulfide bonds. *Blood* **2014**, *123* (13), 2000-2007. DOI: 10.1182/blood-2014-01-549816.
133. Wang, Y. F.; Li, P. F.; Xiang, P.; Lu, J. T.; Yuan, J.; Shen, J., Electrospun polyurethane/keratin/AgNP biocomposite mats for biocompatible and antibacterial wound dressings. *J Mater Chem B* **2016**, *4* (4), 635-648. DOI: 10.1039/c5tb02358k.
134. Lv, X. G.; Li, Z.; Chen, S. Y.; Xie, M. K.; Huang, J. W.; Peng, X. F.; Yang, R. X.; Wang, H. P.; Xu, Y. M.; Feng, C., Structural and functional evaluation of oxygenating keratin/silk fibroin scaffold and initial assessment of their potential for urethral tissue engineering. *Biomaterials* **2016**, *84*, 99-110. DOI: 10.1016/j.biomaterials.2016.01.032.
135. Singaravelu, S.; Ramanathan, G.; Raja, M. D.; Nagiah, N.; Padmapriya, P.; Kaveri, K.; Sivagnanam, U. T., Biomimetic interconnected porous keratin-fibrin-gelatin 3D sponge for tissue engineering application. *Int J Biol Macromol* **2016**, *86*, 810-819. DOI: 10.1016/j.ijbiomac.2016.02.021.
136. Saul, J. M.; Ellenburg, M. D.; de Guzman, R. C.; Van Dyke, M., Keratin hydrogels support the sustained release of bioactive ciprofloxacin. *J Biomed Mater Res A* **2011**, *98a* (4), 544-553. DOI: 10.1002/jbm.a.33147.
137. Roy, D. C.; Tomblyn, S.; Burmeister, D. M.; Wrice, N. L.; Becerra, S. C.; Burnett, L. R.; Saul, J. M.; Christy, R. J., Ciprofloxacin-Loaded Keratin Hydrogels Prevent *Pseudomonas aeruginosa* Infection and Support Healing in a Porcine Full-Thickness Excisional Wound. *Adv Wound Care* **2015**, *4* (8), 457-468. DOI: 10.1089/wound.2014.0576.
138. Roy, D. C.; Tomblyn, S.; Isaac, K. M.; Kowalczewski, C. J.; Burmeister, D. M.; Burnett, L. R.; Christy, R. J., Ciprofloxacin-loaded keratin hydrogels reduce infection and support healing in a porcine partial-thickness thermal burn. *Wound Repair Regen* **2016**, *24* (4), 657-668. DOI: 10.1111/wrr.12449.
139. Gillitzer, R.; Goebeler, M., Chemokines in cutaneous wound healing. *J Leukocyte Biol* **2001**, *69* (4), 513-521.
140. Fujii, T.; Murai, S.; Ohkawa, K.; Hirai, T., Effects of human hair and nail proteins and their films on rat mast cells. *J Mater Sci-Mater M* **2008**, *19* (6), 2335-2342. DOI: 10.1007/s10856-007-3341-x.

141. Fearing, B. V.; Van Dyke, M. E., In vitro response of macrophage polarization to a keratin biomaterial. *Acta Biomater* **2014**, *10* (7), 3136-3144. DOI: 10.1016/j.actbio.2014.04.003.
142. Fearing, B. V.; Van Dyke, M. E., Activation of Astrocytes in Vitro by Macrophages Polarized with Keratin Biomaterial Treatment. *OJRM* **2016**, (5), 1-13. DOI: 10.4236/ojrm.2016.51001
143. San Emeterio, C. L.; Olingy, C. E.; Chu, Y.; Botchwey, E. A., Selective recruitment of non-classical monocytes promotes skeletal muscle repair. *Biomaterials* **2017**, *117*, 32-43. DOI: 10.1016/j.biomaterials.2016.11.021.
144. Ogle, M. E.; Krieger, J. R.; Tellier, L. E.; McFaline-Figueroa, J.; Temenoff, J. S.; Botchwey, E. A., Dual Affinity Heparin-Based Hydrogels Achieve Pro-Regenerative Immunomodulation and Microvascular Remodeling. *ACS Biomaterials Science & Engineering* **2017**. DOI: 10.1021/acsbomaterials.6b00706.
145. Stevenson, W. G., Ventricular scars and ventricular tachycardia. *Trans Am Clin Climatol Assoc* **2009**, *120*, 403-412.
146. Peyton, C. C.; Keys, T.; Tomblyn, S.; Burmeister, D.; Beumer, J. H.; Holleran, J. L.; Sirintrapun, J.; Washburn, S.; Hodges, S. J., Halofuginone infused keratin hydrogel attenuates adhesions in a rodent cecal abrasion model. *J Surg Res* **2012**, *178* (2), 545-552. DOI: 10.1016/j.jss.2012.07.053.
147. Shen, D.; Wang, X.; Zhang, L.; Zhao, X.; Li, J.; Cheng, K.; Zhang, J., The amelioration of cardiac dysfunction after myocardial infarction by the injection of keratin biomaterials derived from human hair. *Biomaterials* **2011**, *32* (35), 9290-9299. DOI: 10.1016/j.biomaterials.2011.08.057.
148. Hinz, B., Formation and function of the myofibroblast during tissue repair. *J Invest Dermatol* **2007**, *127* (3), 526-537. DOI: 10.1038/sj.jid.5700613.
149. Hartrianti, P.; Nguyen, L. T.; Johanes, J.; Chou, S. M.; Zhu, P.; Tan, N. S.; Tang, M. B.; Ng, K. W., Fabrication and characterization of a novel crosslinked human keratin-alginate sponge. *J Tissue Eng Regen Med* **2016**. DOI: 10.1002/term.2159.
150. Park, M.; Shin, H. K.; Kim, B. S.; Kim, M. J.; Kim, I. S.; Park, B. Y.; Kim, H. Y., Effect of discarded keratin-based biocomposite hydrogels on the wound healing process in vivo. *Mater Sci Eng C Mater Biol Appl* **2015**, *55*, 88-94. DOI: 10.1016/j.msec.2015.03.033.
151. Poranki, D.; Whitener, W.; Howse, S.; Mesen, T.; Howse, E.; Burnell, J.; Greengauz-Roberts, O.; Molnar, J.; Van Dyke, M., Evaluation of skin regeneration after burns in vivo and rescue of cells after thermal stress in vitro following treatment with a keratin biomaterial. *J Biomater Appl* **2014**, *29* (1), 26-35. DOI: 10.1177/0885328213513310.

152. Xu, S.; Sang, L.; Zhang, Y.; Wang, X.; Li, X., Biological evaluation of human hair keratin scaffolds for skin wound repair and regeneration. *Mater Sci Eng C Mater Biol Appl* **2013**, *33* (2), 648-655. DOI: 10.1016/j.msec.2012.10.011.
153. Xu, S. B.; Zhang, C. L.; Zhang, A. F.; Wang, H. Y.; Rao, H. X.; Zhang, Z. Y., Fabrication and biological evaluation in vivo of an injectable keratin hydrogel as filler materials. *J Bioact Compat Pol* **2016**, *31* (2), 179-190. DOI: 10.1177/0883911515609941.
154. Yuan, J.; Geng, J.; Xing, Z.; Shim, K. J.; Han, I.; Kim, J. C.; Kang, I. K.; Shen, J., Novel wound dressing based on nanofibrous PHBV-keratin mats. *J Tissue Eng Regen Med* **2015**, *9* (9), 1027-1035. DOI: 10.1002/term.1653.
155. Wang, S.; Wang, Z.; Foo, S. E.; Tan, N. S.; Yuan, Y.; Lin, W.; Zhang, Z.; Ng, K. W., Culturing fibroblasts in 3D human hair keratin hydrogels. *ACS Appl Mater Interfaces* **2015**, *7* (9), 5187-5198. DOI: 10.1021/acsami.5b00854.
156. Tombyln, S.; Pettit Kneller, E. L.; Walker, S. J.; Ellenburg, M. D.; Kowalczewski, C. J.; Van Dyke, M.; Burnett, L.; Saul, J. M., Keratin hydrogel carrier system for simultaneous delivery of exogenous growth factors and muscle progenitor cells. *J Biomed Mater Res B* **2016**, *104* (5), 864-879. DOI: 10.1002/jbm.b.33438.
157. Geiger, M.; Li, R. H.; Friess, W., Collagen sponges for bone regeneration with rhBMP-2. *Adv Drug Deliv Rev* **2003**, *55* (12), 1613-1629. DOI: 10.1016/j.addr.2003.08.010
158. Joseph, V.; Rampersaud, Y. R., Heterotopic bone formation with the use of rhBMP2 in posterior minimal access interbody fusion: a CT analysis. *Spine (Phila Pa 1976)* **2007**, *32* (25), 2885-2890. DOI: 10.1097/BRS.0b013e31815b7596.
159. Kowalczewski, C. J.; Tombyln, S.; Wasnick, D. C.; Hughes, M. R.; Ellenburg, M. D.; Callahan, M. F.; Smith, T. L.; Van Dyke, M. E.; Burnett, L. R.; Saul, J. M., Reduction of ectopic bone growth in critically-sized rat mandible defects by delivery of rhBMP-2 from kerateine biomaterials. *Biomaterials* **2014**, *35* (10), 3220-3228. DOI: 10.1016/j.biomaterials.2013.12.087.
160. Tachibana, A.; Nishikawa, Y.; Nishino, M.; Kaneko, S.; Tanabe, T.; Yamauchi, K., Modified keratin sponge: binding of bone morphogenetic protein-2 and osteoblast differentiation. *J Biosci Bioeng* **2006**, *102* (5), 425-429. DOI: 10.1263/jbb.102.425.
161. de Guzman, R. C.; Saul, J. M.; Ellenburg, M. D.; Merrill, M. R.; Coan, H. B.; Smith, T. L.; Van Dyke, M. E., Bone regeneration with BMP-2 delivered from keratose scaffolds. *Biomaterials* **2013**, *34* (6), 1644-1656. DOI: 10.1016/j.biomaterials.2012.11.002.
162. Schultz, J. D.; Dodson, T. B.; Meyer, R. A., Donor site morbidity of greater auricular nerve graft harvesting. *J Oral Maxillofac Surg* **1992**, *50* (8), 803-805. DOI: 10.1016/0278-2391(92)90269-6

163. Arslantunali, D.; Dursun, T.; Yucel, D.; Hasirci, N.; Hasirci, V., Peripheral nerve conduits: technology update. *Med Devices (Auckl)* **2014**, *7*, 405-424. DOI: 10.2147/MDER.S59124.
164. Apel, P. J.; Garrett, J. P.; Sierpinski, P.; Ma, J.; Atala, A.; Smith, T. L.; Koman, L. A.; Van Dyke, M. E., Peripheral nerve regeneration using a keratin-based scaffold: long-term functional and histological outcomes in a mouse model. *J Hand Surg Am* **2008**, *33* (9), 1541-1547. DOI: 10.1016/j.jhsa.2008.05.034.
165. Lin, Y. C.; Ramadan, M.; Van Dyke, M.; Kokai, L. E.; Philips, B. J.; Rubin, J. P.; Marra, K. G., Keratin gel filler for peripheral nerve repair in a rodent sciatic nerve injury model. *Plast Reconstr Surg* **2012**, *129* (1), 67-78. DOI: 10.1097/PRS.0b013e3182268ae0.
166. Pace, L. A.; Plate, J. F.; Smith, T. L.; Van Dyke, M. E., The effect of human hair keratin hydrogel on early cellular response to sciatic nerve injury in a rat model. *Biomaterials* **2013**, *34* (24), 5907-5914. DOI: 10.1016/j.biomaterials.2013.04.024.
167. Hill, P. S.; Apel, P. J.; Barnwell, J.; Smith, T.; Koman, L. A.; Atala, A.; Van Dyke, M., Repair of peripheral nerve defects in rabbits using keratin hydrogel scaffolds. *Tissue Eng Part A* **2011**, *17* (11-12), 1499-1505. DOI: 10.1089/ten.TEA.2010.0184.
168. Pace, L. A.; Plate, J. F.; Mannava, S.; Barnwell, J. C.; Koman, L. A.; Li, Z.; Smith, T. L.; Van Dyke, M., A human hair keratin hydrogel scaffold enhances median nerve regeneration in nonhuman primates: an electrophysiological and histological study. *Tissue Eng Part A* **2014**, *20* (3-4), 507-517. DOI: 10.1089/ten.TEA.2013.0084.

The Hair Follicle: An Underutilized Source of Cells and Materials for Regenerative Medicine

Mehrdad T Kiani, Claire A Higgins, Benjamin D Almquist

Table of Contents Graphic:

