

Open Research Online

The Open University's repository of research publications and other research outputs

Beginning of activity in 67P/Churyumov-Gerasimenko and predictions for 2014–2015

Journal Item

How to cite:

Snodgrass, C.; Tubiana, C.; Bramich, D. M.; Meech, K.; Boehnhardt, H. and Barrera, L. (2013). Beginning of activity in 67P/Churyumov-Gerasimenko and predictions for 2014–2015. *Astronomy & Astrophysics*, 557, article no. A33.

For guidance on citations see [FAQs](#).

© 2013 ESO

Version: [\[not recorded\]](#)

Link(s) to article on publisher's website:
<http://dx.doi.org/doi:10.1051/0004-6361/201322020>

Copyright and Moral Rights for the articles on this site are retained by the individual authors and/or other copyright owners. For more information on Open Research Online's data [policy](#) on reuse of materials please consult the policies page.

oro.open.ac.uk

Beginning of activity in 67P/Churyumov-Gerasimenko and predictions for 2014/5 [★]

C. Snodgrass¹, C. Tubiana¹, D. M. Bramich², K. Meech^{3,4}, H. Boehnhardt¹, and L. Barrera⁵

¹ Max Planck Institute for Solar System Research, Max-Planck-Str. 2, 37191 Katlenburg-Lindau, Germany
e-mail: snodgrass@mps.mpg.de

² European Southern Observatory, Karl-Schwarzschild-Strasse 2, D-85748 Garching bei München, Germany

³ Institute for Astronomy, 2680 Woodlawn Drive, Honolulu, HI 96822, USA

⁴ University of Hawaii NASA Astrobiology Institute, Honolulu, HI 96822, USA

⁵ Universidad Metropolitana de Ciencias de la Educacion (UMCE), Avda. Jose Pedro Alessandri 774, Santiago, Chile.

Received ; accepted

ABSTRACT

Context. Comet 67P/Churyumov-Gerasimenko was selected in 2003 as the new target of the *Rosetta* mission. It has since been the subject of a detailed campaign of observations to characterise its nucleus and activity.

Aims. Here we present previously unpublished data taken around the start of activity of the comet in 2007/8, before its last perihelion passage. We constrain the time of the start of activity, and combine this with other data taken throughout the comet's orbit to make predictions for its likely behaviour during 2014/5 while *Rosetta* is operating.

Methods. A considerable difficulty in observing 67P during the past years has been its position against crowded fields towards the Galactic centre for much of the time. The 2007/8 data presented here were particularly difficult, and the comet will once again be badly placed for Earth-based observations in 2014/5. We make use of the difference image analysis (DIA) technique, which is commonly used in variable star and exoplanet research, to remove background sources and extract images of the comet. In addition, we reprocess a large quantity of archival images of 67P covering its full orbit, to produce a heliocentric lightcurve. By using consistent reduction, measurement and calibration techniques we generate a remarkably clean lightcurve, which can be used to measure a brightness–distance relationship and to predict the future brightness of the comet.

Results. We determine that the comet was active around November 2007, at a pre-perihelion distance from the Sun of 4.3 AU. The comet will reach this distance, and probably become active again, in March 2014. We find that the dust brightness can be well described by $Af\rho \propto r^{-3.2}$ pre-perihelion and $\propto r^{-3.4}$ post-perihelion, and that the comet has a higher dust-to-gas ratio than average, with $\log(Af\rho/Q(\text{H}_2\text{O})) = -24.94 \pm 0.22$ cm s molecule⁻¹ at $r < 2$ AU. A model fit to the photometric data suggests that only a small fraction (1.4%) of the surface is active.

Key words. comets: individual: 67P/Churyumov-Gerasimenko

1. Introduction

Comets are known for their unpredictable nature, and the process which drives their activity is still poorly understood. While the rise in ice sublimation due to increased heating from the Sun explains, in general terms, the increase in activity of a comet on the inbound leg of its orbit, the precise mechanism causing this activity is not known. The question of when and how a comet will become active is therefore difficult to answer, and there is a wide variation in activity levels at the same heliocentric distance for different comets. Understanding how activity starts and evolves as a comet approaches the Sun is one of the key goals of ESA's *Rosetta* mission, which will rendezvous with comet 67P/Churyumov-Gerasimenko (hereafter 67P) in early 2014 and will follow it all the way to its next perihelion passage in 2015, and beyond. As part of the planning for this mission, and for a campaign of ground based observations in support of it, it is necessary to build up the best understanding possible of the behaviour of 67P before *Rosetta*'s arrival.

Since 67P was selected as the *Rosetta* target in 2003 there have been a number of studies of this comet. Schulz et al. (2004), Lamy et al. (2006) and Lara et al. (2005) obtained the first dedicated characterisation observations after it was selected, when the comet was on the outbound leg of its orbit, and still highly active, following its perihelion passage in 2002. As the comet passed through aphelion its inactive nucleus was studied by Tubiana et al. (2008, 2011) and Lowry et al. (2012), before it was observed in an active state again as it returned to perihelion in 2008 (Tozzi et al. 2011; Lara et al. 2011). Further authors have studied the longer lived dust trail associated with the comet (Ishiguro 2008; Kelley et al. 2008; Agarwal et al. 2010), the dust's polarisation (Hadamcik et al. 2010), the nucleus thermal properties (Kelley et al. 2006; Lamy et al. 2008; Kelley et al. 2009), and the morphology (Vincent et al. 2013) and composition (Schleicher 2006) of its coma over multiple apparitions.

What has been missing so far from the published literature is a reliable estimate of the point in the orbit that activity begins. In this paper we present data taken in 2007 and 2008 around the time of the expected onset, between the inactive nucleus observations taken in 2007 (Tubiana et al. 2011; Lowry et al. 2012) and the active comet observations in 2008 (Tozzi et al. 2011).

[★] Based on observations collected at the European Southern Observatory, Paranal, Chile - 079.C-0687 & 080.C-0259, and from archives.

Table 1. Observational circumstances - 67P monitoring 2007/8.

Date	r^a	Δ^b	α^c	Exp ^d	Filt.
7/8/07	4.55	3.86	10.1	10 × 60 (4)	R
10/9/07	4.41	4.21	13.1	10 × 60 (5)	R
10/10/07	4.28	4.55	12.5	20 × 60 (10)	R
12/11/07	4.13	4.82	9.2	10 × 60 (7)	R
15/11/07	4.11	4.83	8.8	20 × 30 (0)	R
27/3/08	3.39	3.80	14.6	3×15 + 4×60 (6)	VRI
29/3/08	3.38	3.76	14.9	3×15 + 4×60 (6)	VRI
30/3/08	3.38	3.74	15.0	3×15 + 4×60 (6)	VRI

(a) Heliocentric distance (AU). (b) Geocentric distance (AU). (c) Phase angle (degrees). (d) Number of exposures × exposure time (seconds) taken. The number in parenthesis gives the number of frames used in the analysis.

We use these to make estimates of the time of onset of activity in 2007/8, and from that make predictions for 2014.

To provide a broader context to the onset of activity observed in 2007/8, we also wish to study the activity of the comet throughout its orbit. The various studies of 67P in its active state that have been published in recent years have so far concentrated on a short segment of the orbit. Ferrín (2005) published a heliocentric lightcurve based on mostly amateur observations, up to the 2002 apparition. To provide a consistent overview of the activity history of 67P, we downloaded and reduced data available in various professional observatory archives (primarily from ESO) and measured the comet brightness in various apertures. We use this to produce a heliocentric lightcurve based on consistent measurements, which is described in section 4.1, before looking at the implications for dust and gas production rates around the orbit in sections 4.2 and 4.3 respectively. We introduce a model that describes the activity in section 5.

2. Observations and data reduction

2.1. VLT observations

Observations were obtained in service mode at the VLT using the FORS instrument in imaging mode. Images were mostly obtained in the *R*-band; details are given in table 1. Standard reduction (bias level subtraction, flat fielding) was applied using IDL routines from the DanDIA / DanIDL packages¹. These packages provide an implementation of difference image analysis (DIA), which allows accurate subtraction of constant background sources in crowded fields, and includes corrections for changing seeing (Bramich 2008; Bramich et al. 2013). This technique has become a standard tool for variable star photometry in crowded fields, and especially microlensing, and we have recently demonstrated that it is also a powerful method for extracting moving (solar system) targets from dense background fields (Snodgrass & Bramich 2013). Details on the method are given in these papers, but briefly the technique takes one ‘reference’ frame (normally the one with the best seeing in a sequence) and applies a fitted kernel model to match this reference with each other frame. Subtracting these model frames from the data give images with all constant sources removed, revealing any variable stars or moving objects. An example of the subtraction is shown in fig. 1. Use of these techniques was necessary for all

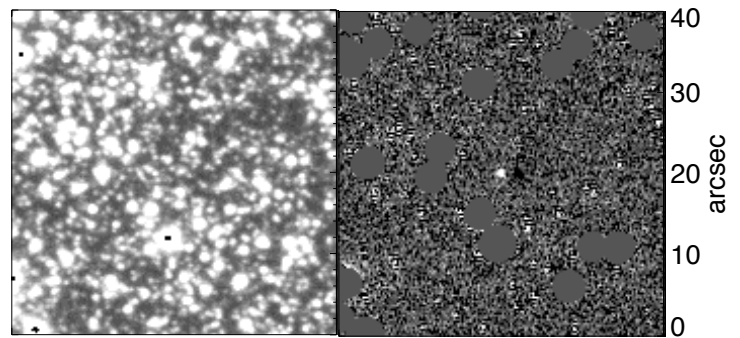


Fig. 1. Example of the DIA method applied to 67P. This frame is taken from the October 2007 data set, and shows the original (left) and subtracted (right) versions of the same area, centred on the comet position. The comet is impossible to identify, much less perform photometry on, in such a crowded field, but is clearly revealed as a positive and negative pair in the subtracted frames. Saturated stars are masked in the difference image. North is up, East to the left.

data taken during 2007 due to the exceptionally crowded stellar fields, as the comet appeared near to the Galactic centre ($b \leq 4^\circ$ throughout the period of observation).

Once the background stars have been subtracted, standard aperture photometry can be used to measure the flux of the moving object. We follow the techniques that we have previously applied for comet nucleus photometry (e.g. Snodgrass et al. 2005), using an aperture with radius equal to the FWHM of the image point-spread-function (PSF) to maximise the signal-to-noise and an aperture correction to ensure that the full flux from the nucleus is included. When using DIA the PSF shape is modelled for each frame as part of the subtraction process, so this can be used to measure a high accuracy correction from a narrow aperture to the full PSF. This PSF shape was also compared with the radial profile of the comet in all frames to search for faint activity. Absolute flux calibration of the resulting photometry was performed based on observations of Landolt/Stetson standard star fields (Landolt 1992; Stetson 2000) observed on the same nights, all of which were photometric.

As these observations were not taken with DIA in mind, this data set presented some challenges. Firstly, there were a relatively large number of saturated stars in each frame, as even 60 seconds is a long exposure time for an 8m telescope when observing at low galactic latitude. Saturated stars cannot be subtracted and have to be masked. We were fortunate that the comet itself was not too close to saturated stars in most of the data, but the saturation still meant that care had to be taken in the convolution kernel calculation. Secondly, each image set covered only a short period of time (~40 minutes), with no separate background image (the star field without the comet) taken. This meant that the reference image needed to be taken from the comet frames, resulting in a negative image of the comet at the reference position in all frames, and the loss of 2-4 frames around the reference time where the comet flux could not be reliably measured due to this negative imprint. Enough well-subtracted frames remained to perform photometry on the comet for all nights except the 15th of November, when a combination of bad and highly variable seeing, high airmass, slow apparent motion of the comet, and nearby saturated stars meant that no useful comet images could be recovered. The total number of images used from each night is given in table 1.

¹ <http://www.danidl.co.uk/>

Table 2. Professional imaging of 67P, 1983-2010. Archival data from dates in bold face were used in this study.

UT Date	Instrument	PI	ESO Prog. ID.	r (AU)	Δ (AU)	α (deg)	Reference
12 Oct 1982 - 10 Mar 1983	Lowell photometer	Schleicher	–	1.3 - 1.8	0.4 - 1.1	13 - 37	Schleicher (2006)
10-16 Apr 1991	KPNO 2.1m+CCD	Mueller	–	4.9	3.9	4	Mueller (1992)
25 Jun 1995	2.2m+EFOSC	Boehnhardt	055.F-0337	2.5	1.9	22	–
18 Nov 1995 - 14 Apr 1996	Lowell photometer	Schleicher	–	1.3 - 1.6	1.0 - 1.8	34 - 48	Schleicher (2006)
12 Dec 1995	NTT+EMMI	Boehnhardt	056.F-0133	1.4	1.0	46	–
09-11 Feb 1996	OHP 1.93m + CARELEC	Weiler	–	1.3	1.2	46	Weiler et al. (2004)
14 Jun 1999	JKT+CCD	Lowry	–	5.7	4.8	4	Lowry et al. (2003)
15 Jul 1999	NTT+SUSI	Tancredi	063.S-0504	5.7	5.1	8	–
25 May 2000	UH 2.2m	Meech	–	5.3	4.3	4	–
30 Sep 2000	UH 2.2m	Meech	–	5.0	5.1	8	–
17 Aug + 30 Sep 2001	UH 2.2m	Meech	–	3.3 - 3.5	2.8 - 3.0	11 - 17	–
09 Sep 2002	Kiso 1.05m Schmidt	Ishiguro	–	1.3	1.7	36	Ishiguro (2008)
02 Dec 2002 + 01 Feb 2003	Kiso 1.05m Schmidt	Ishiguro	–	1.8 - 2.2	1.4 - 1.6	18 - 33	Ishiguro (2008)
11 Dec 2002	SDSS	–	–	1.8	1.6	32	–
10 Feb 2003	3.6m+EFOSC	Boehnhardt	070.C-0505	2.3	1.4	13	Schulz et al. (2004)
20 Feb + 27 Mar 2003	TNG+DOLORES	Lara	–	2.4 - 2.6	1.4 - 1.7	9 - 10	Lara et al. (2005)
Feb - Apr 2003	IAC-80+CCD	Lara	–	2.4 - 2.8	1.4 - 2.0	8 - 16	Lara et al. (2005)
07 Mar - 30 May 2003	TLS 2m+CCD	Weiler	–	2.5 - 3.1	1.5 - 2.8	4 - 19	Weiler et al. (2004)
08 Mar 2003	3.6m+EFOSC	Boehnhardt	070.C-0505	2.5	1.5	4	Schulz et al. (2004)
12 - 13 Mar 2003	HST+WFPC2	Lamy	–	2.5	1.5	5	Lamy et al. (2006)
25 Mar 2003	NTT+EMMI	LSO tech	–	2.6	1.7	9	–
30 Apr - 24 Jun 2003	VLT+FORS	Schulz	270.C-5035	2.9 - 3.2	2.3 - 3.2	18 - 19	Schulz et al. (2004)
29+30 May 2003	UH 2.2m	Meech	–	3.0	2.8	19	–
25-27 Jun 2003	Hale 200" + LFC	Kelley	–	3.2	3.4	18	Kelley et al. (2008)
22-26 Feb 2004	NTT+EMMI/SUSI	LSO tech	–	4.5	4.0	12	Lowry et al. (2012)
14 Apr 2004	VLT+FORS	Boehnhardt	073.C-0346	4.7	3.7	2	Tubiana et al. (2011)
18-21 Apr 2004	2.2m+WFI	Agarwal	072.A-9011	4.7	3.7	1	Agarwal et al. (2010)
23+27 Apr 2004	NTT+EMMI	Lowry	073.C-0061	4.7	3.7	1	–
30 Apr + 01 May 2004	3.6m+EFOSC	Stuewe	073.C-0846	4.7	3.7	2	–
13 Jun 2004	3.6m+EFOSC	Rauer	073.C-0571	4.9	4.2	10	–
16 Jun 2004	VLT+FORS	Boehnhardt	073.C-0346	4.9	4.3	10	Tubiana et al. (2008)
21+22 Jun 2004	UH 2.2m	Meech	–	4.9	4.4	11	–
10-14 May 2005	NTT+EMMI	Lowry	075.C-0247	5.6	4.6	0.1 - 0.8	Lowry et al. (2012)
11 May - 01 Jun 2005	CFHT+Megacam	Ishiguro	–	5.6	4.6	0.1 - 3	–
04-05 Aug 2005	VLT+VIMOS	Gruen	275.B-5034	5.7	5.5	10	–
25 May - 01 Jun 2006	VLT+FORS	Barrera	077.C-0609	5.6	4.6	1	Tubiana et al. (2008)
17-22 Aug 2006	VLT+FORS	Boehnhardt	277.C-5038	5.5	5.3	10	Tubiana et al. (2008)
16 Apr - 16 Jul 2007	VLT+FORS	Barrera	079.C-0687	4.6 - 5.0	3.7 - 4.5	4 - 11	Tubiana et al. (2011)
16-22 Jul 2007	NTT+EMMI	Lowry	079.C-0384	4.6	3.7	6	Lowry et al. (2012)
07 Aug 2007	VLT+FORS	Barrera	079.C-0687	4.6	3.8	10	this work
10 Sep 2007	VLT+FORS	Barrera	079.C-0687	4.4	4.2	13	this work
14 Sep 2007	NTT+EMMI	Lowry	079.C-0384	4.4	4.2	13	Lowry et al. (2012)
10 Oct 2007	VLT+FORS	Barrera	080.C-0259	4.3	4.5	13	this work
12-15 Nov 2007	VLT+FORS	Barrera	080.C-0259	4.3	4.6	12	this work
27-30 Mar 2008	VLT+FORS	Barrera	080.C-0259	3.4	3.8	15	this work
30-31 May 2008	VLT+FORS	Schulz	281.C-5004	3.0	2.5	19	–
01-05 Jun 2008	VLT+FORS/ISAAC	Tozzi	381.C-0123	3.0	2.5	19	Tozzi et al. (2011)
02-04 Jul 2008	VLT+FORS	Schulz	281.C-5004	2.8	1.9	14	–
06-10 Jul 2008	2.2m+WFI	Gruen	081.A-9019	2.7	1.9	14	Agarwal et al. (2009)
01-16 Aug 2008	2.2m+WFI	LSO tech	–	2.4 - 2.6	1.5 - 1.6	6	–
10 Aug 2008	VLT+FORS	Schulz	281.C-5004	2.5	1.5	5	–
03-07 Sep 2008	VLT+FORS/ISAAC	Tozzi	381.C-0123	2.3	1.4	15	Tozzi et al. (2011)
13 Sep 2008	VLT+FORS	Schulz	281.C-5004	2.2	1.4	19	–
21-29 Oct 2008	VLT+FORS/ISAAC	Tozzi	082.C-0740	1.9	1.5	31	Tozzi et al. (2011)
11 Dec 2008	IAA 1.52m + CCD	–	–	1.6	1.7	35	Fulle et al. (2010)
25-27 Dec 2008	IGO 2m	–	–	1.5	1.7	36	Hadamcik et al. (2010)
13 Jan 2009	TNG+DOLORES	Tozzi	–	1.4	1.7	36	Tozzi et al. (2011)
25 Jan - 12 Mar 2009	Lulin 1m + CCD	Lara	–	1.2 - 1.3	1.7	36	Lara et al. (2011)
28 Jan 2009	NTT+EFOSC	Lowry	082.C-0517	1.3	1.7	36	–
19 Mar 2009	CA 2.2m+CAFOS	Lara	–	1.3	1.7	35	Lara et al. (2011)
17-19 Mar 2009	OHP 0.8m	–	–	1.3	1.7	35	Hadamcik et al. (2010)
30 Apr - 01 May 2009	IGO 2m	–	–	1.4	2.0	29	Hadamcik et al. (2010)
01 Feb - 29 Mar 2010	VLT+FORS	Boehnhardt	384.C-0115	3.4 - 3.7	2.7 - 3.0	3 - 16	–
14-16 Feb 2010	NTT+EFOSC	Snodgrass	084.C-0594	3.5	2.9	14	–
16 Mar 2010	SOAR+SOI	Barrera	–	3.6	2.7	8	–
09 Apr 2010	SOAR+SOI	Barrera	–	3.8	2.8	1	–
14 Jul + 30 Aug 2010	NTT+EFOSC	Lowry	185.C-1033	4.3 - 4.5	4.3 - 5.1	9 - 14	–

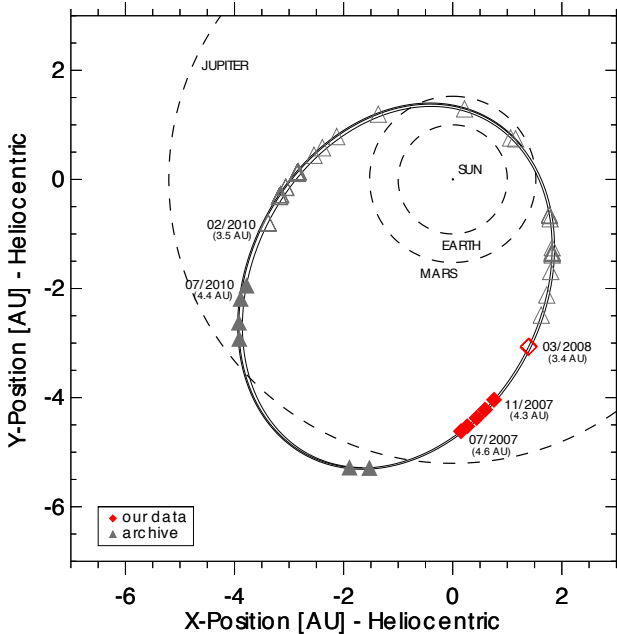


Fig. 2. Position of 67P in its orbit at the time of the observations used in this paper. Open symbols indicate visible activity, closed symbols indicate an apparently inactive nucleus. The VLT data presented in detail are marked by red diamonds, while the archival data are marked by triangles. The comet moves in a counter-clockwise fashion in this plot.

2.2. Archival data

There is a large set of archival data on 67P, with professional observations on approximately 200 individual nights to date (mostly snap-shots, but some full nights of lightcurve observations). Table 2 summarises all of these observations, and indicates the ones used in this study. We selected only R -band images, to give an overall description of the brightness of the comet due to reflected sunlight, as this wavelength range is relatively free of gas emission lines. Figure 2 shows the position of the comet in its orbit at the date of each selected observation.

The vast majority of the data (especially since the selection of the comet as the new *Rosetta* target in 2003) has been taken at ESO, and is therefore available through the ESO archival service². These data were largely taken by a few groups (led by Schulz, Bönhardt, Barrera, Tubiana, Lowry and Tozzi) and have mostly been published elsewhere already. However, each group reported measurements in different ways, so we reprocessed all the data and performed the measurements in a consistent manner to give a uniform data set. Standard reduction was performed using DanDIA tools, although no image subtraction was necessary for the frames used. To allow automated processing of such a large data set, master bias and flat field frames covering long periods (~ 1 year) were used for each instrument. While these introduce some systematic errors, this is not a problem at the level of photometric accuracy (~ 0.1 mag) necessary for studying the total brightness evolution of the comet around its orbit. It is a testament to the stability of the ESO instruments that the reductions performed in this way are actually very good.

Calibration of each frame was performed, where possible, using field stars of known brightness and colour from photometric surveys. Throughout most of 2003 and some of 2010 the

comet was in an area of sky covered by the Sloan Digital Sky Survey (SDSS), so calibration was performed using field stars in this catalogue. The 1995 data were calibrated using field stars available in the AAVSO Photometric All-Sky Survey (APASS) catalogue, which covers the full sky but unfortunately could not be used for most of the data due to either the small field of view or the long exposure time used, and consequently a lack of non-saturated catalogue stars. Where catalogue stars were not available in the comet field we determined nightly zeropoints using Landolt/Stetson star fields observed on the same night (assuming default extinction and colour term values to allow quick automated fitting). In a few cases where this was not possible we used the tabulated nightly zeropoints available for VLT instruments on the ESO web page, or default instrumental values. Where possible APASS and VLT nightly zeropoint calibrations were also checked against the SDSS; we find that the APASS and SDSS photometry give consistent results, while there is an offset of up to 0.5 mag between the VLT tabulated / default zeropoints and SDSS in 2003 - the points calibrated this way are treated with caution. The calibration source for each night is listed in table 4.

In addition to the ESO data, we also took some frames from the Japanese SMOKA archive (observations with the Kiso 1.05m Schmidt) and the SDSS (which serendipitously observed the comet in December 2002). Kiso observations were reduced in the same way as the ESO data, and calibrated using the APASS & SDSS catalogues, while the SDSS data is already reduced and photometrically calibrated into the SDSS system. For the SDSS image, new aperture photometry was measured on the comet, and the SDSS r -band magnitudes then converted to Cousins (Landolt) R -band using³

$$R = r - 0.1837(g - r) - 0.0971 \quad (1)$$

and solar $(g - r) = 0.45$ (Holmberg et al. 2006). Observations are also available in the HST and CFHT (Megacam) archives, although we chose not to include these for simplicity, as the dates of these observations are near to dates covered by ESO observations. Finally, images from the University of Hawaii 2.2m telescope were identified in Karen Meech's archive of comet observations, although these were unfortunately of limited use as the comet was either not detected or merged with background stars in many of the frames (these snap-shot images are not suitable for DIA processing, as no image of the field without the comet is available). The solar system object search tool of the Canadian Astronomy Data Centre⁴ (Gwyn et al. 2012) proved exceptionally useful in identifying archival observations in addition to those we already knew of.

3. 2007/8 results

3.1. Beginning of activity

We plot the measured R -band magnitude of the comet during 2007/8 in fig. 3, which also shows the predicted nuclear magnitude based on the observations of the inactive nucleus in July 2007 and measurement of the nucleus phase function by Tubiana et al. (2008, 2011). Our VLT observations were short sequences (covering only a small fraction on the comet's ~ 12.7 hour rotation period), and we are looking for small changes in brightness (less than the $\Delta m \approx 0.4$ mag. variation due to the nucleus lightcurve). We therefore applied a correction to the photometry,

³ <http://www.sdss3.org/dr9/algorithms/sdssUBVRITransform.php>

⁴ <http://www1.cadc-ccda.hia-ihp.nrc-cnrc.gc.ca/ssos/>

² <http://archive.eso.org>

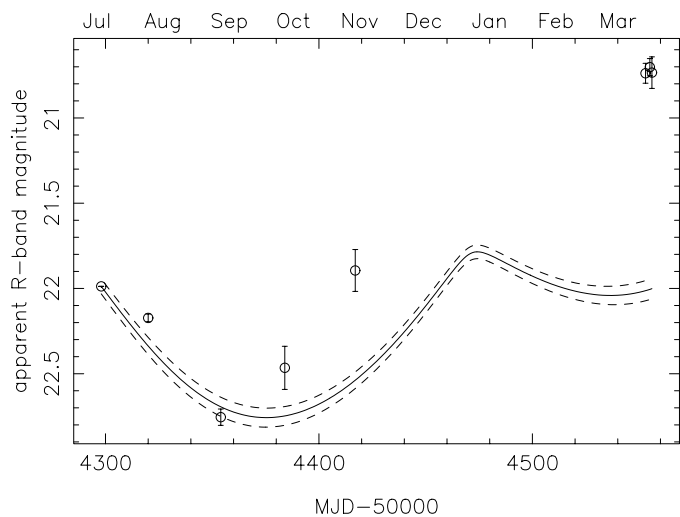


Fig. 3. Photometry covering the period July 2007 to March 2008, showing the apparent R -band magnitude of the comet (corrected for rotational phase). The solid line shows the predicted magnitude of the bare nucleus (based on the July 2007 data; Tubiana et al. (2011)), with the dashed lines showing the 1σ uncertainty on this. The comet appears to be significantly brighter than expected by November 2007, indicating some unresolved activity within the aperture at this point (at a heliocentric distance of 4.3 AU). By March 2008, when the comet is visibly active in images, the difference is more than 1 magnitude.

by using the nucleus shape and pole model published by Lowry et al. (2012) to calculate the predicted rotational lightcurve phase at the time of the observations, and the corresponding offset from the mean effective magnitude, as would be observed for a non-varying (spherical) nucleus. As Lowry et al. (2012) also use July 2007 data in their model, the uncertainty in the extrapolation of rotational phase is small ($\sim 0.1\%$ by November 2007). The corrections to the photometry due to rotation phase are at most 0.13 magnitudes (for the August 2007 data), and smaller than the uncertainties for all other months (Sep: -0.01 mag.; Oct: $+0.01$; Nov: $+0.03$; Mar: n/a). For each month we plot the average magnitude from the individual measurements, with the error bar given by the standard deviation on this mean. The individual photometric measurements, without correction for rotational phase, are given in table 3.

The offset from the predicted nucleus magnitude is clear for the March 2008 data, where faint activity is also apparent in the images (fig. 4). We can therefore be certain that the comet was active in March 2008, at 3.4 AU from the Sun on its inbound leg. The photometry also shows a significant amount of extra flux in November 2007 (MJD 54417), suggesting some weak activity at that time, when the comet was at 4.3 AU from the Sun. The October data also suggest a possible excess flux, although the uncertainty on this data point makes it consistent with the inactive nucleus at a 2σ level, while the September data set (where the comet was detected at high signal-to-noise, well away from residuals due to saturated stars) indicates that activity had not yet reached a detectable level at 4.4 AU.

In addition to measuring the brightness of the comet, we also test for activity by comparing its surface brightness profile with the shape of the PSF. Profiles were measured in each individual frame and also for a median stack of all frames in each night that showed the comet well separated from the negative imprint from the reference frame, and from any residuals due to saturated stars. The resulting profiles are shown in fig. 5. This analysis also confirms that there was no detectable activity at 4.4 AU

Table 3. Photometry from the 2007/8 VLT data (without rotational phase correction).

Date	MJD	m_R	σ_R
7/8/2007	54320.05823	22.32	0.04
	54320.05951	22.27	0.03
	54320.06068	22.31	0.03
10/9/2007	54320.06194	22.31	0.04
	54354.03934	22.76	0.06
	54354.04065	22.74	0.05
	54354.04185	22.75	0.06
	54354.04317	22.80	0.06
10/10/2007	54354.04437	22.67	0.05
	54384.01135	22.40	0.06
	54384.01252	22.29	0.06
	54384.01358	22.32	0.06
	54384.01476	22.54	0.07
	54384.01583	22.60	0.08
	54384.01971	22.50	0.07
12/11/2007	54384.02079	22.70	0.08
	54384.02303	22.50	0.07
	54384.02420	22.38	0.06
	54384.02527	22.51	0.07
	54417.00344	21.80	0.14
	54417.00449	21.87	0.12
	54417.00560	22.01	0.13
	54417.00664	21.86	0.12
	54417.00787	21.83	0.10
	54417.00901	21.95	0.12
54417.01177	22.15	0.13	
27/3/2008	54553.37439	20.67	0.04
	54553.37554	20.82	0.04
	54553.37674	20.68	0.02
	54553.37785	20.77	0.02
	54553.37918	20.72	0.02
29/3/2008	54553.37918	20.72	0.02
	54553.38026	20.77	0.02
	54555.38642	20.80	0.04
	54555.38699	20.71	0.03
	54555.38801	20.69	0.02
	54555.38920	20.68	0.02
	54555.39027	20.67	0.02
	54555.39145	20.66	0.02
30/3/2008	54556.38324	20.90	0.04
	54556.38381	20.78	0.04
	54556.38534	20.66	0.02
	54556.38642	20.67	0.02
	54556.38750	20.68	0.02
	54556.38858	20.72	0.02

in September 2007. The October profile also appears star-like, while the November profile matches the image PSF in the inner parts. The presence of residuals from saturated stars near to the comet's position in November makes the profile difficult to measure at larger distances, so it is difficult to draw firm conclusions from it. By March 2008 the activity is obvious in the profile, as expected.

Taken together, the photometry and profiles suggest that 67P's activity reached a detectable level from the ground at around 4.3 AU in November 2007, just as it was lost from view from Earth due to decreasing solar elongation. It is unfortunate that the two nights in November that were therefore critical

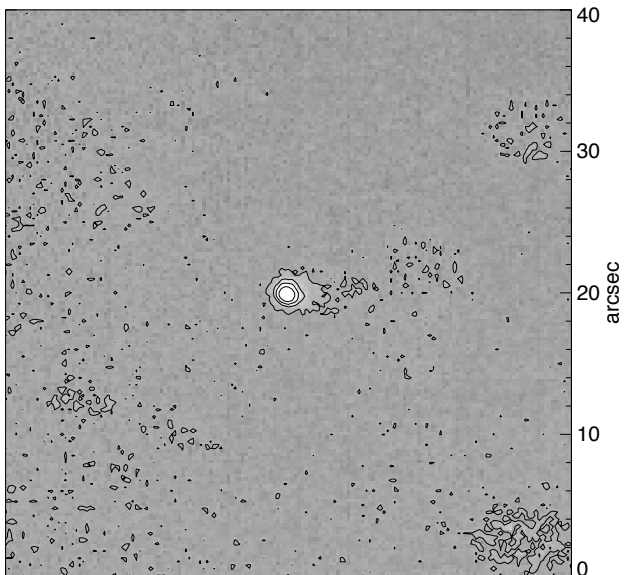


Fig. 4. Median R -band image from 12×60 second images over 3 nights in March 2008. By this point (at $r = 3.4$ AU) the comet is visibly active, with a faint tail to the West (right in this image; North is up).

presented the greatest challenges in data reduction, and that the night of the 15th produced no usable data to confirm the brightness increase seen on the night of the 12th. The presence of nearby stellar residuals in the profile indicates that we should be careful with the photometric identification of activity in the November data, but the seeing was good that night ($\text{FWHM} < 0.8''$) and the narrow aperture selected is well clear of any stars. 67P does not appear to have a sudden start in activity (a rapid rise in brightness) as seen in comet 10P/Tempel 2 (Knight et al. 2012), rather a more continuous increase in dust production that slowly crosses our detection threshold.

We therefore expect, assuming that the comet repeats its activity from one orbit to another, that detectable activity will begin in the current orbit at approximately 4.3 AU inbound, in March 2014. This is very early in the *Rosetta* mission, during the phase when the spacecraft and instruments will be recommissioned following deep-space hibernation, and *Rosetta* is still $\sim 5 \times 10^6$ km from the comet. This implies that an extra effort will be required by the *Rosetta* team to get images of the comet as early as possible, in order to observe the start of activity. At this time the comet will be just returning to visibility from the Earth, and will again be seen against a crowded background, making observations from ground-based telescopes challenging. We believe that these extra efforts (by both ESA and ground-based observers) are justified as we expect activity to begin at large distance. It will also be important to test the sensitivity of ground-based observations against *in situ* measurements from *Rosetta*'s instruments – this mission will give us an interesting opportunity to test just how active a comet must be before careful processing of data from the largest telescopes can reveal the dust from Earth.

3.2. The colour of the coma at large heliocentric distance

Images were taken in 3 filters (Bessell V , R and I) during March 2008, which we use to measure the colour of the comet. As 67P was weakly active there was significant flux from the coma. Using the method of Jewitt & Danielson (1984), which assumes a steady state coma, we find that the coma made up $\sim 20\%$ of

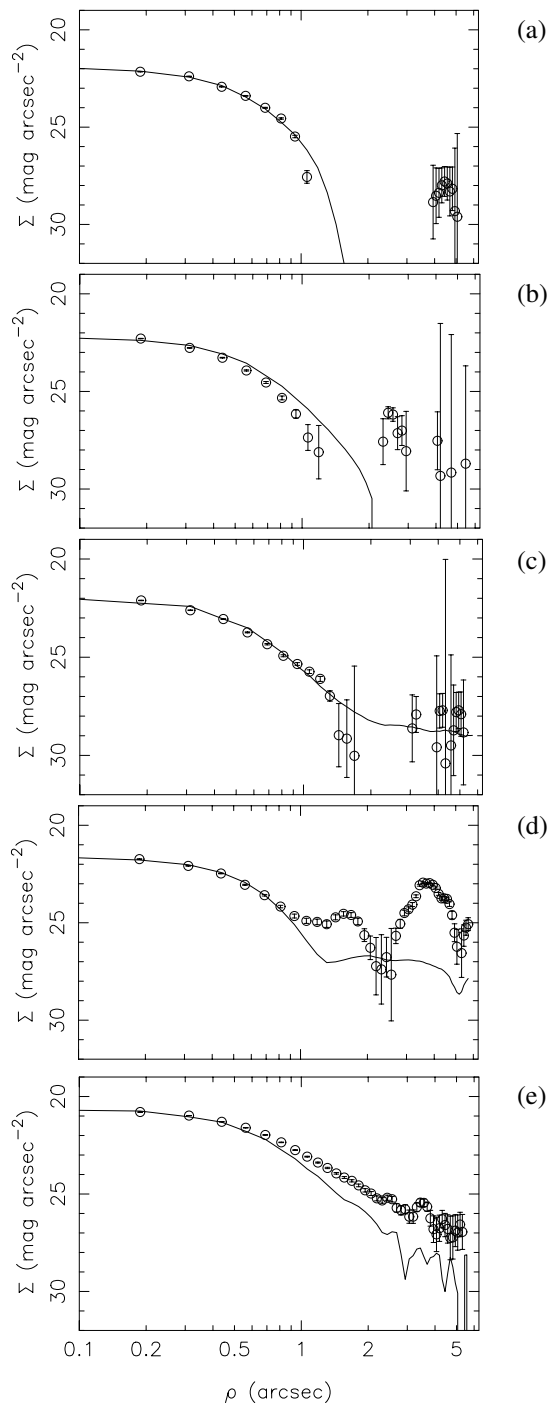


Fig. 5. Surface brightness profiles for the comet in (a) August, (b) September, (c) October, (d) November 2007, and (e) March 2008. The points show the comet profile, while the line shows the image PSF. (a) - (c) show star-like profiles, while (e) shows clear activity. (d) is difficult to interpret due to residuals in the image from saturated stars (the bumps beyond $\rho = 1''$). The gaps in the comet profiles in (a) - (c) around $\rho \sim 2''$ are due to the negative imprint from the reference image.

the flux within an aperture of radius 10,000 km at the comet (equivalent to $3.7''$ at the time of observation). The colours of the comet within this aperture are found to be $(V - R) = 0.45 \pm 0.05$ and $(R - I) = 0.39 \pm 0.04$, which are redder than solar colours ($(V - R)_\odot = 0.35$; $(R - I)_\odot = 0.33$) and similar to the average for cometary nuclei (Snodgrass et al. 2008; Lamy & Toth 2009). The coma is slightly bluer than the nucleus, which has an aver-

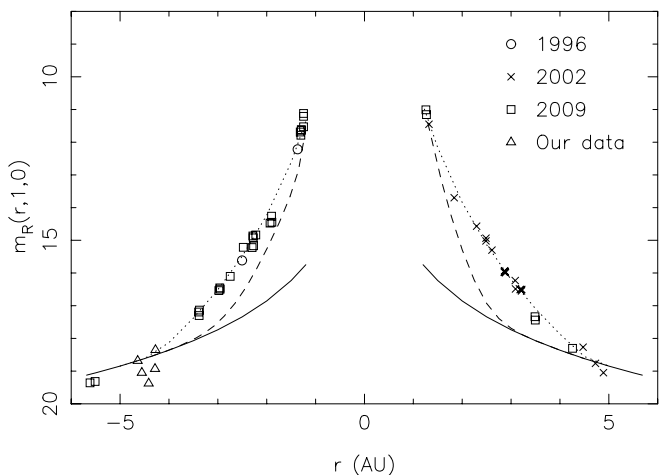


Fig. 6. Heliocentric lightcurve, showing the R -band magnitude measured within an aperture of radius 10,000 km at the distance of the comet, corrected to unit geocentric distance and zero phase angle, against heliocentric distance in AU. Negative heliocentric distance shows pre-perihelion measurements. Different symbols show data taken during different apparitions, and highlight ‘our data’ presented in section 3 (which were taken at the start of the 2009 apparition). The solid black line shows the expected magnitude of the bare nucleus, based on the absolute magnitude reported by Tubiana et al. (2011). The dashed line shows a prediction for the total magnitude based on a water production rate model (see section 4.3), while the dotted lines show a power law fit to the data.

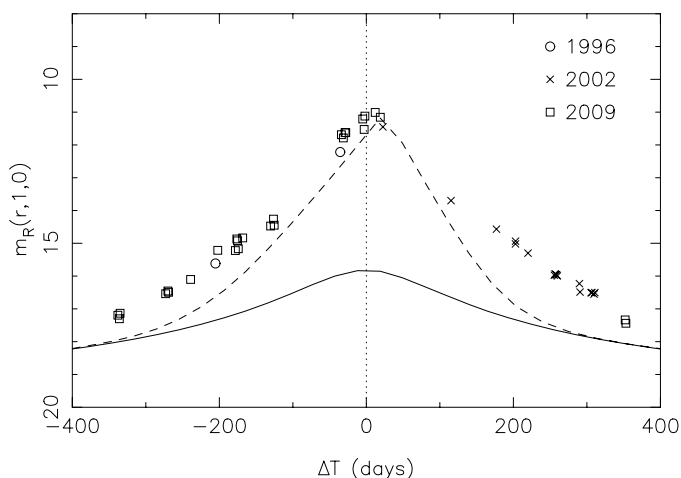


Fig. 7. Same as fig. 6, but with heliocentric lightcurve against time from perihelion in days. In this plot we show only data within ± 1 year of perihelion, to highlight the peak region.

age $(V - R) = 0.53 \pm 0.02$ and $(R - I) = 0.48 \pm 0.02$ (Lamy et al. 2006; Tubiana et al. 2008, 2011; Lowry et al. 2012). This implies that the grains in the coma are smaller than the dominant surface grains, preferentially scattering bluer wavelengths. An alternative explanation is the presence of significant gas emission lines, which can increase the flux in the V -band, but the $(R - I)$ colour is not strongly affected by gas emissions and is also seen to be bluer than the nucleus, implying that this is a grain size effect.

4. Archival data results

4.1. Heliocentric lightcurve

Heliocentric lightcurves give a good overview of the activity level of a comet around its orbit. The series of papers by Ferrín (e.g. Ferrín 2005, 2010) have presented heliocentric (or ‘secular’) lightcurves for a number of comets based on photometry reported to the Minor Planets Center or available in the literature, and give a general description of the behaviour of each comet, even if the photometric scatter in these plots is large due to the varied data sources.

Here we present a heliocentric lightcurve for 67P based on a consistent re-reduction of professional data taken from archival sources. All data shown in figs. 6 and 7, and given in table 4, come from our own reprocessing of archival images, with the exception of some points around perihelion during the 2009 apparition taken from Lara et al. (2011), where the reported $Af\rho$ within $\rho = 10,000$ km was converted back into a flux within this aperture.

We choose to display the lightcurve measured within a $\rho = 10,000$ km aperture for all measurements, to maintain a consistent physical volume of coma, independent of viewing geometry. We measured the photometry within a selection of different apertures, including fixed physical sizes and fixed apparent radii (we give results from both $\rho = 10,000$ km and $\rho = 5''$ in table 4). The table also gives the $Af\rho$ quantity and slope of the radial profile of the comet (see section 4.2). Using a fixed aperture means that no attempt is made to measure the ‘total’ flux from the comet; near to perihelion the coma is clearly larger than 10,000 km in radius. This is quite deliberate, as a total flux measurement either requires a very large aperture to be sure to contain all possible coma (which would possibly mean an aperture larger than the field of view of the camera in some cases), and removal of all stars within that aperture, or to somehow define the edge of the coma, which clearly depends on the sensitivity of the camera used.

The measured photometry was reduced to geocentric distance $\Delta = 1$ AU and phase angle $\alpha = 0^\circ$ using

$$m_R(r, 1, 0) = m_R - 5\log\Delta - \beta\alpha \quad (2)$$

with the phase coefficient $\beta = 0.02$ mag deg $^{-1}$, as found for cometary dust over a range of phase angles up to $\alpha \approx 30^\circ$ (Meech & Jewitt 1987). An alternative phase function, which is non-linear at larger angles, combines measurement of comet 1P/Halley (Schleicher et al. 1998) with calculations by Marcus (2007)⁵. For $\alpha < 55^\circ$ this is given by

$$m_R(r, 1, 0) = m_R - 5\log\Delta - 2.5(0.01807\alpha - 0.000177\alpha^2), \quad (3)$$

which can be approximated with a linear $\beta = 0.04$ mag deg $^{-1}$ relationship over most phase angles observable from Earth. Using this instead of $\beta = 0.02$ mag deg $^{-1}$ makes only a small difference to the resulting photometry (increasing the perihelion brightness slightly, but not noticeably changing the shape of the lightcurve). We choose to use the simple linear phase function, and return to this topic in the discussion (see section 4.4).

The phase function behaviour of cometary dust is quite different from that of nuclei. The nucleus phase darkening has been measured for only a handful of comets, but these can be described by linear functions with an average coefficient of $\beta = 0.053 \pm 0.016$ mag deg $^{-1}$ (Snodgrass et al. 2011). Slopes of

⁵ See <http://asteroid.lowell.edu/comet/dustphase.html> for details.

$\beta = 0.059 - 0.076 \text{ mag deg}^{-1}$ have been found for 67P (Lowry et al. 2012; Tubiana et al. 2011). These are considerably steeper than the dust function, so the choice of ‘dust-like’ or ‘nucleus-like’ phase correction can have a significant effect on the photometric results. As the heliocentric lightcurve primarily contains data from the active phases, where the flux from the coma dominates, we use the dust law for all data. The difference for the handful of observations of the inactive nucleus is small, as these were generally taken near to opposition. $Af\rho$ values are also corrected to zero phase.

The lightcurve demonstrates a number of noteworthy features. Firstly, the lightcurve is remarkably ‘clean’, showing the advantage of using only data taken with large professional telescopes and consistent methods. We conservatively estimate the uncertainty on any given point to be $\sim 0.1 \text{ mag}$. (the formal uncertainties including photon noise and calibration are typically $\sim 0.01 \text{ mag}$., but do not include any systematic uncertainty due to either the relatively ‘quick and dirty’ flat-fielding or occasional faint stars within the photometric aperture). This gives us some confidence in making further predictions based on the lightcurve. Power law fits to the data describe the flux as $\propto r^{-5.2}$ pre-perihelion and $\propto r^{-5.4}$ post-perihelion. The second point to note is that data taken around different perihelion passages (1996, 2002 and 2009) all fit on the same smooth curve, implying that the activity level of the comet does not vary significantly between apparitions, and that any predictions for 2014/5 may be of some use (of course, with the usual caveats that even ‘well behaved’ comets can have unpredictable moments). It is unfortunate that the section of the lightcurve between -4 and -3.5 AU is one of the few badly covered parts, so we cannot add further to the question of the turn-on time discussed in the previous section, beyond noting that the pre-perihelion slope is consistent with departure from a bare nucleus at 4.3 AU . There was only one additional observation in this period in the archive, from the University of Hawaii 2.2m in August 2001 ($r = -3.5 \text{ AU}$), where the comet was seen but was merged with brighter background stars. As this data set was a *BVRI* snap-shot, with only one frame per filter, it is not possible to apply DIA techniques to recover the *R*-band photometry. Finally, we note that the overall shape of the lightcurve is reasonably symmetrical around perihelion, although the comet is consistently brighter (by around 1 magnitude) at the same distance post-perihelion when compared to pre-perihelion. This is more clearly seen when the heliocentric lightcurve is plotted against time from perihelion (fig. 7), which shows that the brightness peaks in the weeks immediately after perihelion.

The idea that 67P reaches its peak in activity shortly after perihelion is in agreement with past results based on water production rate (Schleicher 2006) and coma morphology (Vincent et al. 2013). Lightcurves based on amateur photometry around perihelion also show this asymmetry (Kidger 2003; Ferrín 2005), with the peak occurring approximately one month after perihelion. The asymmetry can be explained by different hypotheses. Firstly, it can be due to the time taken for the thermal wave to travel from the comet’s surface to the buried ice, meaning that the maximum sublimation rate lags behind the maximum solar insolation. Alternatively, the production of dust and gas could be a two stage process: Material is mostly lifted in large grains which subsequently fragment, delaying the majority of the production rate. This scenario is unlikely to explain a lag of weeks though, as the timescale for material to pass out of the $10,000 \text{ km}$ radius aperture is only 2 or 3 days at typical grain speeds. Finally, the activity peak could be due to a seasonal effect. Based on the pole orientation measured by Vincent et al. (2013) and

Lowry et al. (2012), it is expected that the comet reaches equinox around 50 days before perihelion, so it is possible that there are areas near the previously unlit pole (e.g. in crater-like depressions) that only see sunlight near to perihelion (and hence produce a boost in activity at this time). Vincent et al. (2013) use such a seasonal model to explain the relative strengths of jets seen in the coma. Observations by *Rosetta* will allow us to differentiate between these various effects.

4.2. Dust production

The *R*-band observations used in measuring the heliocentric lightcurve are sensitive to reflected sunlight from dust in the coma, and are not significantly affected by emission lines from gas. It is therefore natural to use these measurements to constrain the amount of dust in the coma, and the rate at which the comet produces dust. The dust brightness for active comets is often quantified by the $Af\rho$ parameter (A’Hearn et al. 1989). The conversion from surface brightness to mass loss rate requires assumptions on the albedo, density, velocity and size distribution of dust grains, all of which are only poorly constrained. Various authors have built complex dust models which fit these parameters to the observed coma brightness and morphology (e.g. Agarwal et al. 2007, 2010; Fulle et al. 2010). The recent paper by Fink & Rubin (2012) calculates expected $Af\rho$ values considering variable dust albedo and phase behaviour dependent on grain size, based on the dust flux simulations for 67P by Tenshiev et al. (2011). This sort of modelling is beyond the scope of this paper; instead we report the observed $Af\rho$ and briefly consider some caveats on its use.

$Af\rho$ is useful as it is easily calculated and widely employed, providing a first order comparison of activity levels between different comets and at varying heliocentric distances. The values we derive for 67P are typical for Jupiter family comets, of order $10^2 - 10^3 \text{ cm}$ around perihelion. The use of $Af\rho$ to compare between comets (or even other observations of 67P) does have to be treated with care though. Firstly, the values we give in table 4 use a $\beta = 0.02 \text{ mag deg}^{-1}$ phase function to correct them to the values that would have been observed at a constant phase angle. We correct to $\alpha = 0^\circ$, while others normalise to other angles or do not apply any phase function correction. Secondly, it is important to note that $Af\rho$ is independent of wavelength and of the choice of aperture radius ρ only for an idealised coma with grey dust and a $1/\rho$ brightness profile. In real comets this is not always the case, as the particle size distribution can influence the coma colour, and the assumption of a $1/\rho$ profile requires a steady state (dust being produced from the nucleus at the same rate it flows out of the aperture). We minimise these uncertainties by using a fixed physical aperture size and observations at a fixed wavelength, and a consistent correction for phase, so the $Af\rho$ values we find can be compared with each other to assess dust production around the orbit. To judge how well our $Af\rho$ values can be used in comparison with other work, we test how well 67P meets the steady state assumption.

It is clear from images of the comet (representative examples are shown in fig. 8) that the morphology of its coma and tails changes throughout its orbit. Pre-perihelion the coma is quite symmetric, with a broad fan developing into a dust trail, while post-perihelion larger particles form a ‘neckline’. Further image processing reveals jets within the coma, which are seen to change in strength around the orbit. Agarwal et al. (2007) and Vincent et al. (2013) discuss the large scale and fine structure morphology of the comet in detail.

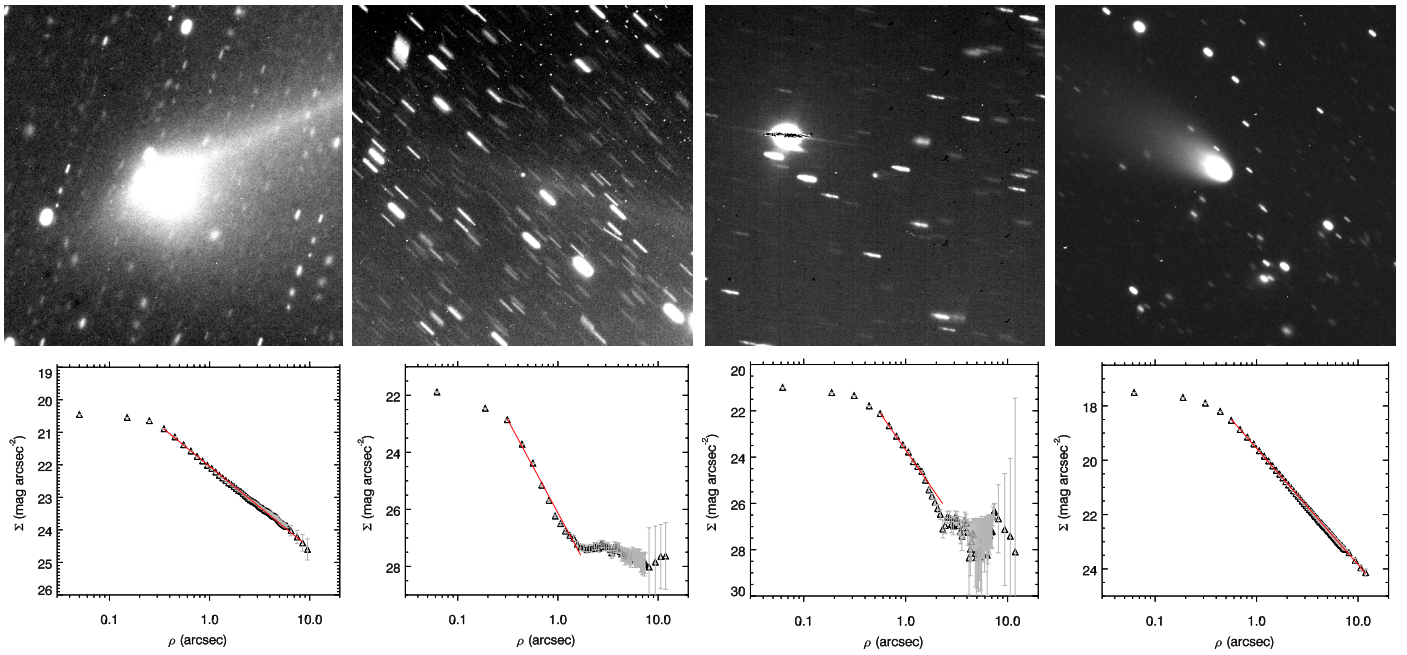


Fig. 8. Representative images and corresponding surface brightness profiles for 67P at four different points in its orbit. From left to right: May 2003, at 2.9 AU post-perihelion, showing high activity and a trail or neck-line of larger particles; June 2004, 4.9 AU post-perihelion, with the nucleus inactive but a clear neck-line; March 2008, 3.4 AU, at the start of visible activity; October 2008, 1.9 AU pre-perihelion, displaying a broad tail.

Tozzi et al. (2011) found that $Af\rho$ varied with ρ for observations of 67P at $r = 2.3$ AU pre-perihelion, and so the coma did not behave as $1/\rho$. We find that 67P does not match the steady state assumption over a wider range in heliocentric distance, by measuring the slope of the radial profile in all the archival data sets. When plotted as magnitudes (or fluxes on a logarithmic scale) against $\log(\rho)$, the surface brightness profile of an active comet should have a linear profile with a slope of -1, or -1.5 if the effects of radiation pressure are taken into account (Jewitt & Meech 1987). We find that the slopes vary between shallower than -1 to -2 or steeper, with a correlation between slope and heliocentric distance. The steepest slopes are meaningless, as they correspond to images when the comet is inactive (fig. 8), and the profile shape is actually the image PSF (and therefore a linear fit to a gaussian profile, with the result dependent on the seeing), but there is still a correlation when only the active profiles are considered. A possible explanation for this effect is the longer time that larger dust grains remain near to the nucleus, acting to slow the overall rate at which dust leaves an aperture when there are more large grains (presumably when activity is highest near to perihelion). A more complex dust model needs to be employed to look at this effect in detail, so it is not considered further here.

The comet's changing morphology and variable surface brightness profile show that $Af\rho$ measurements must be treated with caution. Despite this caveat, we find that inspection of the values determined from the archival data can give some useful constraints. We measure $Af\rho$ values with a peak at ~ 1000 cm in the weeks after perihelion, with values ~ 100 cm at $r = 2$ AU, ~ 50 cm at 3 AU, and dropping to single figures (where the flux is entirely from the inactive nucleus, and $Af\rho$ is consequently meaningless) beyond 4.5 AU. $Af\rho$ is larger at a given distance post-perihelion than it is pre-perihelion, consistent with the slight offset in the brightness peak and also with the observed tendency of comets to remain active to larger distances outbound (e.g. Kelley et al. 2013). All measurements are consistent with

single power-law fits pre- and post-perihelion, given by

$$Af\rho = 958 \times r^{-3.18} \quad (\text{cm}) \quad (4)$$

and

$$Af\rho = 1552 \times r^{-3.35} \quad (\text{cm}) \quad (5)$$

respectively. These are steeper than the canonical $1/r^2$ often assumed for comets (and the average $Af\rho \propto r^{-2.3}$ found by A'Hearn et al. (1995)), but are shallower than the $r^{-5.8}$ fit for 67P found by Kidger (2003). Schleicher (2006) found exponents of -9.5 ± 5.6 and -8.0 ± 3.6 pre-perihelion, and -0.6 ± 1.3 and -0.4 ± 1.2 post-perihelion, for $Af\rho$ in UV and green continuum filters, but over a much reduced range in r (especially pre-perihelion). A'Hearn et al. (1995) found a slope of -1.34 ± 0.81 , for the same range of distances ($1.3 < r < 1.9$ AU) post-perihelion. Our result is significantly shallower than the best fit found by Agarwal et al. (2007), who obtained $Af\rho = 2393 \times r^{-5.08}$ cm by fitting phase corrected values from a variety of sources (including both the Kidger (2003) and Schleicher (2006) data sets) in the range $-2 < r < 3$ AU (over three apparitions), although these authors note that the data have a large scatter and the obtained exponent is unexpectedly steep.

$Af\rho$ is, under the simplest assumptions, directly proportional to the dust production rate, with an empirical calibration suggesting that $Af\rho$ in cm $\approx Q_d$ in kg s^{-1} (A'Hearn et al. 1995). We can therefore compare the r dependence we find to that assumed ($Q_d \propto r^\delta$) in various dust models:

1. Agarwal et al. (2010) assume an equivalent of $\delta = -5$, based on the Agarwal et al. (2007) fit to $Af\rho$.
2. Kelley et al. (2008, 2009) use $\delta = -5.8$, from the fit by Kidger (2003).
3. Ishiguro (2008) uses the neck-line appearance to find a weak constraint on $\delta = -3$, although this model considers only activity near perihelion.

4. The model by [de Sanctis et al. \(2005\)](#) can be approximated pre-perihelion by $\delta = -3.5$ for $r < 2$ AU, with a much steeper $\delta = -10.2$ beyond this (based on their fig. 9, model A). Post-perihelion we find that $\delta = -3.2$ for $r < 2$ AU and $\delta = -10.5$ for $r > 2$ AU fit their model.
5. The complex GIADA dust model ([Fulle et al. 2010](#)) does not provide a simple scaling with r for comparison, as it is based on a higher order fit to $Af\rho$ data. It is not clear that such a function is required, given the error bars on [Fulle et al. \(2010\)](#)'s fig. 1; we find that power laws with $-3 < \delta < -2$ given reasonable fits to the displayed data, although these do not necessarily trace the complex behaviour of the model.

Most of these models agree on a perihelion dust production rate $Q_d \approx 1000 \text{ kg s}^{-1}$ (with the exception of [Ishiguro \(2008\)](#), who obtain an order of magnitude lower rate), comparable to the number from a simple calibration of $Af\rho$. It is clear that the generally steeper dependence on r in the models means that they predict relatively little dust at larger distances than our photometry suggests. While it would certainly be worth applying more complex models to the data we present here, it appears that current models underestimate the dust production that can be expected at large heliocentric distance, and *Rosetta* should be prepared to encounter significant dust early in its mission.

4.3. Gas production

For *Rosetta*, it is important to constrain the gas production rate of 67P around the orbit. This is actually of greater importance than the dust production rate, in terms of mission planning, as the effects of gas drag on the large solar panels present more problems (and transfer more momentum) than dust impacts on the spacecraft. The gas production rate is, however, more difficult to measure, requiring spectra or images in narrow-band filters, and is typically only possible when the comet is near to the Earth and Sun, and therefore already highly active. The *R*-band images we present are not sensitive to gas emissions, but can be used to compare predictions on total brightness from gas production models.

The most substantial set of gas production rate observations come from [Schleicher \(2006\)](#), who presents narrow-band photometry taken around the 1982 and 1996 perihelion passages, reaching a maximum distance of $r = 1.86$ AU outbound, and also reviews measurements from other authors. [Ootsubo et al. \(2012\)](#) measured water and CO_2 production rates using the *Akari* satellite when 67P was at $r = 1.8$ AU inbound in 2008. There is considerable scatter in these measurements, attributed to rotational variability by [Schleicher \(2006\)](#), but in general water production rate is found to peak at $Q \approx 10^{28}$ molecules s^{-1} around a month after perihelion.

For *Rosetta* planning there are agreed minimum and maximum activity levels expected, in terms of production rates for H_2O , CO and CO_2 , at perihelion, 2, 3 and 3.5 AU ([Biele & Herfort 2012](#); [Biele & Ulamec 2013](#)). These define boundary conditions for planning trajectories (and science operations) possible in the so called 'Low' and 'High' activity cases, and are based on simple extrapolations from the observations rather than any complex model. The *ALICE* and *OSIRIS* instruments on *Rosetta* are using a power law fit to the observed water production rates for their planning, based on time from perihelion ΔT rather than r to include the asymmetric peak in activity ([A'Hearn](#), private communication). It is given by

$$\begin{aligned} \log(Q) &= 27.66 + 0.006836\Delta T, & \Delta T < 35 \\ \log(Q) &= 28.10 - 0.009858\Delta T, & \Delta T > 35 \end{aligned} \quad (6)$$

This fit falls neatly between the minimum and maximum activity levels considered by ESA, and so, while obviously only an approximate model, provides a reference production rate for the medium activity case, which we believe to be the most likely actual scenario at the comet.

The fit is displayed for comparison with our photometry in fig. 6 and fig. 7, where we have converted water production to total magnitude using the empirical relationship $\log(Q) = 30.675 - 0.2453m_h$ ([Jorda et al. 1992, 2008](#)). The total magnitude m_h is for visual observations (assumed to approximately match the *V*-band), and is reduced to unit geocentric distance but does not include any phase function correction. As it is based on estimates of 'total' brightness, it is not based on observations through any fixed aperture, with individual measurements showing great variation. The relationship is essentially uncalibrated for distances beyond 2 - 3 AU, at the limit of the measurements on $Q(\text{H}_2\text{O})$ for normal comets. Together, these limitations mean that the magnitudes estimated from this method are indications only, and not more accurate than ± 0.5 magnitudes, but they do still allow a useful comparison. Fig. 6 shows that the total brightness estimated from the water production rate is significantly lower than the measured *R*-band magnitude (including a correction of $(V - R) = 0.5$), despite the fact that our measurements are taken within $\rho = 10,000$ km, and therefore underestimate the total brightness near to perihelion. The difference is more than a magnitude at all distances pre-perihelion, only giving similar results around the peak in water production. As both the magnitude and the plotted water model are based on observations, including data from the same perihelion passage, this is a real effect, not due to a difference in models.

This implies that 67P must be a relatively dusty comet, either due to water lifting more dust from the surface than other comets with the same production rate, or due to a significant component of the activity being driven by a different gas species (e.g. CO or CO_2). The measurement by [Ootsubo et al. \(2012\)](#) shows the ratio of $\text{CO}_2/\text{H}_2\text{O}$ for 67P to be relatively low (7%) compared with other comets (median 17%) measured within 2.5 AU from the Sun. According to the taxonomy of [A'Hearn et al. \(1995\)](#) 67P is a carbon-chain depleted comet (although only 'mildly depleted' based on the reanalysis of the same data by [Schleicher \(2006\)](#)), meaning that it has a lower C_2/CN ratio than other comets. As the parent species of C_2 and CN are still debated, this does not tell us much about what is driving the dust. The production rates of other gasses (C_3 , NH) relative to OH are close to the average values for the depleted group of comets ([A'Hearn et al. 1995](#)). Surprisingly, [A'Hearn et al. \(1995\)](#) also find a typical 'dust production' for 67P, with $\log(Af\rho/Q(\text{OH})) = -25.23 \pm 0.50 \text{ cm s molecule}^{-1}$, compared with the mean for depleted comets of -25.30 ± 0.29 . [Schleicher \(2006\)](#) slightly update the value to -25.27 , and note that this value is dustier than 'typical' comets, and almost identical to that found for 81P/Wild 2. We find a mean value of $\log(Af\rho/Q(\text{OH})) = -24.89 \pm 0.21 \text{ cm s molecule}^{-1}$, based on the OH production rates from [Schleicher \(2006\)](#) and using the r dependency given above to generate the expected values of $Af\rho$ at the time of each observation. The difference is largely due to the fact that we have corrected our $Af\rho$ values to zero phase angle. Following the same approach we find an average dust/water relationship with $\log(Af\rho/Q(\text{H}_2\text{O})) = -24.94 \pm 0.22 \text{ cm s molecule}^{-1}$, where we have included all available measurements of the H_2O production rate. These measurements cover a range $-1.8 < r < 1.9$ AU, and there is a trend of increasing dust-to-gas ratio over this range (which was also noted by [Schleicher \(2006\)](#)), so the average value must be treated with caution. The trend can be ap-

proximated by $Af\rho/Q \propto r^{2.8}$, implying that the dust-to-gas ratio increases with increasing distance from the Sun. Taken together with equation 4, this suggests that the pre-perihelion water production rate can be estimated by

$$Q(\text{H}_2\text{O}) \approx 2.3 \times 10^{28} r^{-5.9}, \quad (7)$$

implying that *Rosetta* will encounter production rates of $Q \sim 6 \times 10^{24}$ molecules s^{-1} at $r = 4$ AU, $\sim 3 \times 10^{25}$ at 3 AU, and $\sim 4 \times 10^{26}$ at 2 AU. These must be treated as approximate, as it is unlikely that the $Af\rho \leftrightarrow Q(\text{H}_2\text{O})$ relationship is valid at these larger distances. The exponent is similar to that found by Schleicher (2006) at smaller r , who obtained $Q(\text{OH}) \propto r^{-6.4}$ and $\propto r^{-5.4}$ for pre- and post-perihelion, respectively.

4.4. Dust phase function

Finally, we attempt to put independent constraints on the phase function of the dust in 67P's coma. To do this we *assume* that the lightcurve follows simple power laws, based on the good fit to the heliocentric lightcurve based on $\beta = 0.02$ mag deg^{-1} , and repeat the fitting process allowing β to vary. We continue to fit the pre- and post-perihelion power laws separately, with one power law for each, using a single value of β for each pair of fits (i.e. we allow the heliocentric brightness dependence to be different on inbound and outbound legs as before, and assume that the dust phase function does not change around the orbit). By minimising the root-mean-squared variation around the best fit straight lines m_R vs $\log(r)$, we find an optimal $\beta = 0.03 \pm 0.02$ mag deg^{-1} . The r -dependence does not change much from that found assuming either $\beta = 0.02$ mag deg^{-1} or the Schleicher et al. (1998) phase function, which is not surprising as they bracket the best fit value, and both are covered by the formal uncertainty. Using $\beta = 0.03$ mag deg^{-1} we find the R -band flux is $\propto r^{-5.4}$ pre-perihelion and $\propto r^{-5.6}$ post-perihelion.

5. Activity model

The simple power-law relationships given in previous sections are useful as they present a straightforward way to present *observed* trends, and make predictions based on those. However, there is no physical reason to expect that the real outgassing rate actually follows such rules. Ultimately, full 3D thermal evolution models (e.g. Prialnik et al. 2004) will be key to understanding and interpreting the composition and activity of comets, but this is beyond the scope of this work. As a first step we employ a simple ice sublimation model to explore activity over a range of distances. We use the model developed by Meech et al. (1986) and applied to 103P/Hartley 2, based on the long campaign of photometry on that comet before and after the *EPOXI* mission encounter (Meech et al. 2011). The physics behind the model are described in more detail by Meech & Svoreň (2004), but are briefly introduced here.

As ices sublimate, from either the surface or subsurface layers, the escaping gas drags dust from the nucleus to escape into the coma and tail. In the absence of gas fluorescence, the total comet brightness has a contribution from the nucleus and the scattered light from the dust. It can be shown that the total coma brightness can be expressed as a function of mass loss (Meech et al. 1986) via:

$$m_{coma} = 30.7 - 2.5 \log_{10} \left[\frac{p_\lambda (dM/dt)t}{D_g a r^2 \Delta^2} \right] \quad (8)$$

Table 5. Parameters used in the activity model

Parameter	Value	Reference
<i>Nucleus:</i>		
Phase coefficient	0.076 mag deg^{-1}	Tubiana et al. (2011)
Albedo	0.054	Kelley et al. (2009)
Radius	2.04 km	Kelley et al. (2009)
Emissivity	0.9	assumed
Rotation period	12.68 hr (slow)	Tubiana et al. (2011)
Density	400 kg m^{-3}	assumed
<i>Dust:</i>		
Phase coefficient	0.02 mag deg^{-1}	assumed
Grain density	1000 kg m^{-3}	assumed

where the time, t , is a function of the projected aperture size and grain velocity (for simplicity we assume the Bobrovnikoff approximation $v \approx r^{-0.5}$ m s^{-1} , for r in AU), and a , p_λ and D_g are the grain radius, albedo, and density, respectively. The mass loss is computed using the energy balance at the nucleus:

$$F_\odot(1 - A)/r^2 = \chi[\epsilon\sigma T^4 + L(T)(dm_s/dt) + \kappa(dT/dz)]. \quad (9)$$

The left hand side of the equation is the incident solar flux and the terms on the right hand side represent the blackbody energy, the energy going into sublimation and conduction into the interior (which we assume is negligibly small). χ is a rotation parameter expressing whether the heat is deposited only on one face of the nucleus (slow rotator) or evenly over the whole surface (fast rotator). The mass loss per unit area, (dm_s/dt) is related to the sublimation vapor pressure and the average speed of the gas molecules leaving the surface. The sources for the latent heats $L(T)$ and sublimation vapor pressures for some common ices are summarized in Meech et al. (1986).

The free parameters in the model include: ice type, nucleus radius, albedo, emissivity, density, properties of the dust (sizes, density, phase function), and fractional active area. For 67P we have the advantage that many of the required properties are known (or are at least reasonably well constrained), leaving us to adjust fractional active area and ice composition to match the light curve. The assumed values for the model parameters are given in table 5.

We iterate changing the fractional active surface area until the calculated gas production rates match those observed at specific heliocentric distances. For CO_2 we find a fit consistent with flux estimates from Bauer et al. (2012) using WISE observations at 3.32 AU inbound, which gave $Q(\text{CO}_2) = 5 \times 10^{25}$ molecules s^{-1} , and Ootsubo et al. (2012), who obtained $Q(\text{CO}_2) = 4.3 \times 10^{25}$ at 1.84 AU from observations with the Akari satellite. The models suggested that 0.04% of the surface area was producing CO_2 (inbound) and required an enhancement to 0.09% post-perihelion. Matching the photometric light curve brightness required a dominant grain size in the 5-micron range. The models require that 1.4% of the surface area is active for water-sublimation, but that the dominant grain size is around 1.5 microns to match the light curve brightness. Without external constraint on gas production, the light curve brightness can be matched either by increasing the gas production and sublimating area, or by increasing the effective cross section of the scatterers, which can be done by making the average grain size smaller. The curves shown in fig. 9 are the best fit from the combined $\text{CO}_2 + \text{H}_2\text{O}$ models that are consistent with all of the reported gas production rates, and fix the parameters as shown in table 5.

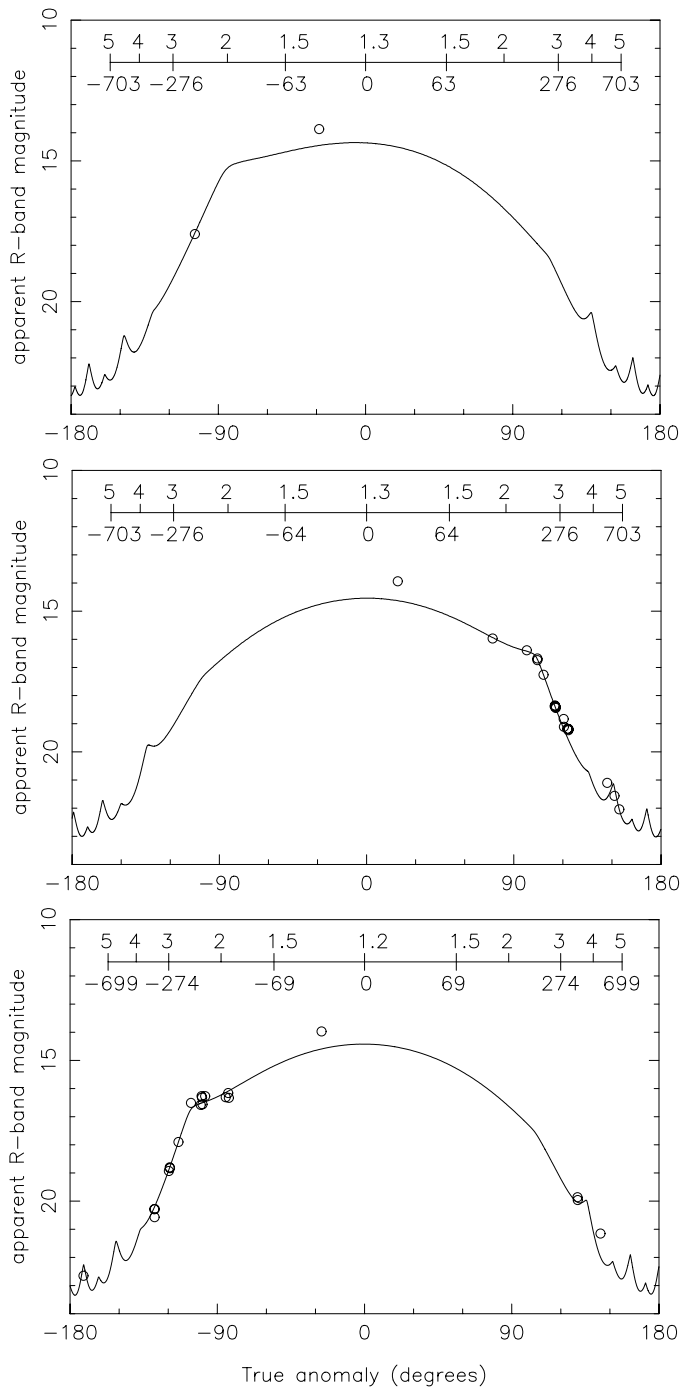


Fig. 9. Model fit to the archival photometry, plotted against true anomaly in degrees. Here the photometry is plotted as apparent magnitudes within $\rho = 5''$ (without correction for observing geometry), as the model includes the geometry (producing ‘waves’ near aphelion due to changing geocentric distance). The three perihelion passages (1996, 2002 and 2009) are plotted separately. The scale across the top of each figure gives the corresponding heliocentric distance (AU) and ΔT (days). The model reproduces all data well except for that within $\sim 30^\circ$ ($\approx \pm 1$ month) of perihelion, where there is enhanced activity.

The same parameters are used for all three apparitions, showing there is no discernable secular variation in the production. The three data points close to perihelion are too bright for the model parameters above; the fractional active area has to increase to near 4% around perihelion, also consistent with the reported water production rates from [Schleicher \(2006\)](#). In fact,

Table 6. Production rates in 2014/5 from the ice sublimation model.

Date	r (AU)	$Q(\text{CO}_2)$		$Q(\text{H}_2\text{O})$	
		kg s^{-1}	molec. s^{-1}	kg s^{-1}	molec. s^{-1}
20/01/14	4.5	0.50	$6.8\text{E}+24$	0.01	$5.2\text{E}+23$
20/03/14	4.3	0.57	$7.7\text{E}+24$	0.04	$1.4\text{E}+24$
23/05/14	4.0	0.69	$9.3\text{E}+24$	0.13	$4.7\text{E}+24$
20/07/14	3.7	0.80	$1.1\text{E}+25$	0.36	$1.4\text{E}+25$
20/08/14	3.5	0.89	$1.2\text{E}+25$	0.62	$2.3\text{E}+25$
11/11/14	3.0	1.30	$1.7\text{E}+25$	2.2	$8.1\text{E}+25$
21/01/15	2.5	1.90	$2.5\text{E}+25$	5.3	$2.0\text{E}+26$
28/03/15	2.0	2.90	$3.9\text{E}+25$	12	$4.4\text{E}+26$
04/06/15	1.5	5.20	$7.1\text{E}+25$	27	$1.0\text{E}+27$
13/08/15	1.2	7.70	$1.0\text{E}+26$	42	$1.6\text{E}+27$

the reported water production tapers back down to the values consistent with the model within about 1 month of perihelion.

At large r the production rates predicted by these parameters provide a close match to those given by the fit to ΔT (equation 6), although they underestimate the perihelion activity. The model gives an enhanced production rates relative to equation 7 between $r \sim 2$ and 3.5 AU, and lower rates at distances smaller or larger than this, although the results are of the same order of magnitude. At 4.3 AU, the distance we found for the start of ‘detectable’ activity in section 3, the model gives production rates of $Q(\text{H}_2\text{O}) = 1.4 \times 10^{24}$ and $Q(\text{CO}_2) = 7.7 \times 10^{24}$ molecules s^{-1} . Table 6 gives results from the model for various dates and distances, including the dates of relevance to *Rosetta* marked in fig. 10.

6. Predictions for 2014/5

Our observations indicate that activity in 67P starts at large heliocentric distance, at least 4.3 AU inbound. Modelling the full heliocentric lightcurve suggests that there is likely to be a very low level of activity present at even larger distances, which implies that *Rosetta* will find an already active comet when the spacecraft wakes up in January 2014 (at 4.5 AU). We expect the activity to reach a level detectable from Earth (with a large telescope) by March 2014. It will be an interesting test of sensitivities to see whether the remote sensing instruments onboard *Rosetta* are capable of detecting activity before this, although it may not be possible to try, given the expected schedule of recommissioning following deep space hibernation. Once again the comet will appear against a crowded stellar background (low galactic latitude), as seen from Earth, in 2014, necessitating the use of DIA methods to perform photometry from the ground. We expect that the comet will begin to show a noticeable coma in Earth-based images around the same time as the comet’s nucleus is resolved by the *OSIRIS* cameras onboard *Rosetta*, in July 2014.

In fig. 10 we show the expected brightness of the comet, as seen from Earth, based on the fit to our heliocentric lightcurve and the observing geometry around the next perihelion. The repeatability of the comet’s activity in the last three perihelion passages suggests that we can be reasonably confident about this prediction. We include 2016, to cover the period when the comet is most easily observed from Earth, and the potential extended mission for *Rosetta* beyond its current 2015-12-31 end date. This plot shows that 67P will reach perihelion while at low ($\sim 45^\circ$) solar elongation, and consequently be difficult to observe with large professional telescopes. The expected magnitude (peaking

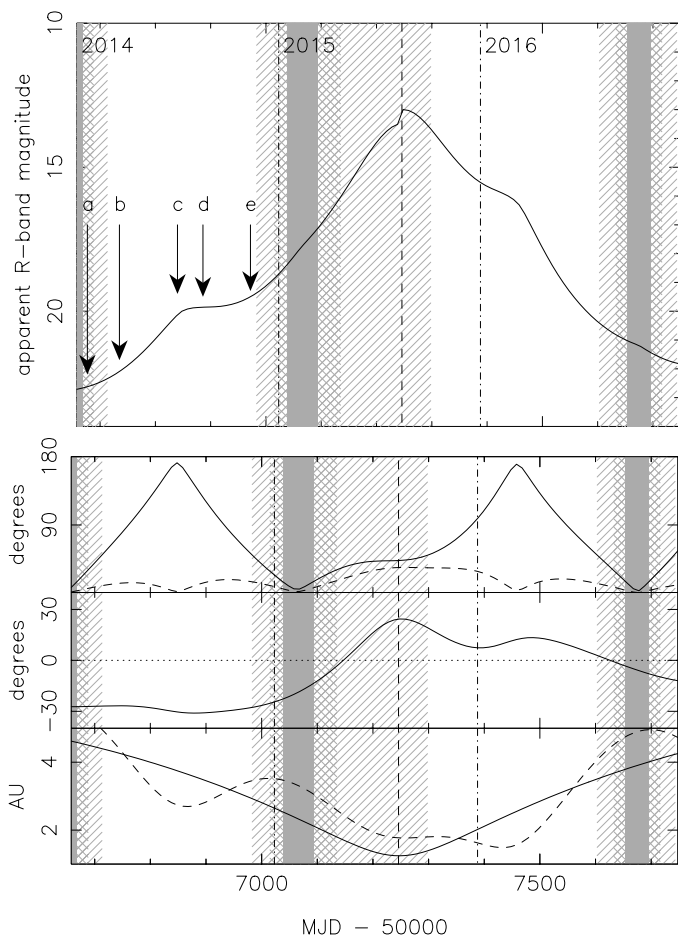


Fig. 10. Predicted apparent R -band magnitude of the comet, as measured within an aperture with $\rho = 10,000$ km, for 2014–2016. This covers the active phase of the *Rosetta* mission, including any extended mission beyond the end of 2015. Mission milestones in 2014 are marked: (a) Switch on of the spacecraft (January 20th, 2014); (b) Expected beginning of detectable activity, at 4.3 AU (March 2014); (c) The nucleus begins to be resolved by the *OSIRIS* Narrow Angle Camera on *Rosetta* (July 2014); (d) Orbit insertion (August 2014, at 3.5 AU); (e) Lander released (November 2014, at 3 AU). The observability of the comet from Earth is shown by hatched, cross-hatched and solid grey areas marking when the solar elongation is less than 50° , 30° and 15° , respectively. Perihelion (in August 2015) is marked by a vertical dashed line. At that time the comet will be 43° from the Sun, as seen from Earth. The lower 3 panels show various geometric parameters that describe the observability of the comet. Upper panel: Solar elongation (solid line) and phase angle (dashed line); Middle panel: Declination; Lower panel: Heliocentric (solid line) and geocentric (dashed line) distances.

at $m_R \approx 13$) is, however, sufficient that total brightness estimates will be possible using smaller telescopes. Production rate measurements, requiring spectra or narrow-band photometry, will be more challenging, but are of great interest. *Rosetta* will provide *in situ* measurements of gas abundance in localised areas of the inner coma, but not the wider view needed to link these measurements to ground-based observations of other comets; measurements of the overall production of the comet can be used to make this link. Furthermore, a very complete heliocentric lightcurve through 2015 will allow comparison between the dust production rate of the comet, as measured for the whole body, with the dust flux in the inner coma and the changes in the nucleus measured by *Rosetta*'s instruments. As we have shown, careful consistent analysis and good calibration can result in a

very clean lightcurve; if combined with a large campaign to give almost constant coverage then such an approach will reveal any subtle changes (e.g. small outbursts) that can be correlated with events seen by the spacecraft.

7. Conclusions

We make use of an advanced difference image analysis package to remove the stellar background in exceptionally crowded fields, to reveal the comet in previously unusable data. This data covers the critical period around $R_h \approx 4$ AU when activity is expected to start. In addition, we have located archival images of the comet throughout its orbit, and processed them in a consistent manner to produce a reliable heliocentric lightcurve. We find:

1. Detectable activity (using the world's best current telescopes) starts as far from the Sun as 4.3 AU, based on excess flux in photometric measurements, while the comet morphology shows visible activity by 3.4 AU.
2. The comet's morphology and surface brightness profile exhibit significant variations around the orbit, but the heliocentric light curve is very smooth, with a peak shortly after perihelion.
3. The dust flux can be described by single power law fits, with only slight differences in slope around perihelion. We find $Af\rho \propto r^{-3.2}$ pre-perihelion and $\propto r^{-3.4}$ post-perihelion.
4. These slopes are used to predict the dust flux around the next perihelion, with a peak R -band magnitude of ~ 13 expected in August 2015, as seen from Earth and measured within a $\rho = 10,000$ km aperture, although the comet will be at relatively low solar elongation ($\sim 45^\circ$) at the time.
5. By comparing our $Af\rho$ fits with previously published measurements of the gas production rate, we find that the average dust-to-gas ratio for the comet can be expressed as $\log(Af\rho/Q(\text{H}_2\text{O})) = -24.94 \pm 0.22 \text{ cm s molecule}^{-1}$, for measurements within 1.9 AU of the Sun. A trend of increasing dust-to-gas with increasing distance allows us to find a very approximate r dependence for water production, $Q(\text{H}_2\text{O}) \propto r^{-5.9}$, although we caution that this is unlikely to match reality at larger distances.
6. A physical model based on sublimation from the nucleus is used to fit the observed brightness of the comet, and suggests that 1.4% of the surface is active (sublimating water), while 0.04–0.09% of the surface is sublimating CO_2 . There is a peak around perihelion requiring an increase of the active area to $\sim 4\%$ of the surface.

Acknowledgements. We made extensive use of the ESO archive, and wish to thank the staff at ESO Headquarters in Garching who maintain this facility. We are also grateful to all of the original observers and observatory staff who took the data. We thank Laurie Urban for locating the University of Hawaii 2.2m data on 67P, and Samuel Duddy for providing the rotational phase corrections based on the Lowry et al. (2012) model. We are grateful to Mike A'Hearn, Olivier Hainaut and Stephen Lowry for helpful suggestions. The research leading to these results has received funding from the European Union Seventh Framework Programme (FP7/2007-2013) under grant agreement no. 268421. CS also thanks ESO's visiting scientist programme for financial support during a visit to Garching, during which some of this work was carried out. This research was supported in part by NASA grants NNX13A151G and NNA09DA77A. We have used the NASA ADS system, including the Dexter graph reading software, and thank the developers and maintainers for their efforts. This research used the facilities of the Canadian Astronomy Data Centre operated by the National Research Council of Canada with the support of the Canadian Space Agency. Based in part on data collected at Kiso observatory (University of Tokyo) and obtained from the SMOKA, which is operated by the Astronomy Data Center, National Astronomical Observatory of Japan. This research was made possible through the use of the AAVSO Photometric All-Sky Survey (APASS), funded by

the Robert Martin Ayers Sciences Fund. We made use of an image obtained by the SDSS, and calibrated other data based on their star catalogue. Funding for SDSS-III has been provided by the Alfred P. Sloan Foundation, the Participating Institutions, the National Science Foundation, and the U.S. Department of Energy Office of Science. The SDSS-III web site is <http://www.sdss3.org/>. SDSS-III is managed by the Astrophysical Research Consortium for the Participating Institutions of the SDSS-III Collaboration including the University of Arizona, the Brazilian Participation Group, Brookhaven National Laboratory, University of Cambridge, Carnegie Mellon University, University of Florida, the French Participation Group, the German Participation Group, Harvard University, the Instituto de Astrofísica de Canarias, the Michigan State/Notre Dame/JINA Participation Group, Johns Hopkins University, Lawrence Berkeley National Laboratory, Max Planck Institute for Astrophysics, Max Planck Institute for Extraterrestrial Physics, New Mexico State University, New York University, Ohio State University, Pennsylvania State University, University of Portsmouth, Princeton University, the Spanish Participation Group, University of Tokyo, University of Utah, Vanderbilt University, University of Virginia, University of Washington, and Yale University.

Schulz, R., Stüwe, J. A., & Boehnhardt, H. 2004, *A&A*, 422, L19
 Snodgrass, C. & Bramich, D. M. 2013, in prep.
 Snodgrass, C., Fitzsimmons, A., & Lowry, S. C. 2005, *A&A*, 444, 287
 Snodgrass, C., Fitzsimmons, A., Lowry, S. C., & Weissman, P. 2011, *MNRAS*, 414, 458
 Snodgrass, C., Lowry, S. C., & Fitzsimmons, A. 2008, *MNRAS*, 385, 737
 Stetson, P. B. 2000, *PASP*, 112, 925
 Tenishev, V., Combi, M. R., & Rubin, M. 2011, *ApJ*, 732, 104
 Tozzi, G. P., Patriarchi, P., Boehnhardt, H., et al. 2011, *A&A*, 531, A54
 Tubiana, C. 2008, PhD thesis, Technische Universität Carolo-Wilhelmina zu Braunschweig
 Tubiana, C., Barrera, L., Drahus, M., & Boehnhardt, H. 2008, *A&A*, 490, 377
 Tubiana, C., Bönhardt, H., Agarwal, J., et al. 2011, *A&A*, 527, A113
 Vincent, J.-B., Lara, L. M., Tozzi, G. P., Lin, Z.-Y., & Sierks, H. 2013, *A&A*, 549, A121
 Weiler, M., Rauer, H., & Helbert, J. 2004, *A&A*, 414, 749

References

Agarwal, J., Boehnhardt, H., Gruen, E., et al. 2009, in *European Planetary Science Congress 2009*, 537
 Agarwal, J., Müller, M., & Grün, E. 2007, *Space Sci. Rev.*, 128, 79
 Agarwal, J., Müller, M., Reach, W. T., et al. 2010, *Icarus*, 207, 992
 A'Hearn, M. F., Campins, H., Schleicher, D. G., & Millis, R. L. 1989, *ApJ*, 347, 1155
 A'Hearn, M. F., Millis, R. L., Schleicher, D. G., Osip, D. J., & Birch, P. V. 1995, *Icarus*, 118, 223
 Bauer, J. M., Kramer, E., Mainzer, A. K., et al. 2012, *ApJ*, 758, 18
 Biele, J. & Herfort, U. 2012, *ESA TN RO-ESC-TN-5566*
 Biele, J. & Ulamec, S. 2013, *LPI Contributions*, 1719, 1392
 Bramich, D. M. 2008, *MNRAS*, 386, L77
 Bramich, D. M., Horne, K., Albrow, M. D., et al. 2013, *MNRAS*, 428, 2275
 de Sanctis, M. C., Capria, M. T., & Coradini, A. 2005, *A&A*, 444, 605
 Ferrín, I. 2005, *Icarus*, 178, 493
 Ferrín, I. 2010, *Planet. Space Sci.*, 58, 365
 Fink, U. & Rubin, M. 2012, *Icarus*, 221, 721
 Fulle, M., Colangeli, L., Agarwal, J., et al. 2010, *A&A*, 522, A63
 Gwyn, S. D. J., Hill, N., & Kavelaars, J. J. 2012, *PASP*, 124, 579
 Hadamcik, E., Sen, A. K., Levasseur-Regourd, A. C., Gupta, R., & Lasue, J. 2010, *A&A*, 517, A86
 Holmberg, J., Flynn, C., & Portinari, L. 2006, *MNRAS*, 367, 449
 Ishiguro, M. 2008, *Icarus*, 193, 96
 Jewitt, D. C. & Danielson, G. E. 1984, *Icarus*, 60, 435
 Jewitt, D. C. & Meech, K. J. 1987, *ApJ*, 317, 992
 Jorda, L., Crovisier, J., & Green, D. W. E. 1992, in *Asteroids, Comets, Meteors 1991*, ed. A. W. Harris & E. Bowell, 285–288
 Jorda, L., Crovisier, J., & Green, D. W. E. 2008, *LPI Contributions*, 1405, 8046
 Kelley, M. S., Fernández, Y. R., Licandro, J., et al. 2013, *Icarus*, 225, 475
 Kelley, M. S., Reach, W. T., & Lien, D. J. 2008, *Icarus*, 193, 572
 Kelley, M. S., Wooden, D. H., Tubiana, C., et al. 2009, *AJ*, 137, 4633
 Kelley, M. S., Woodward, C. E., Harker, D. E., et al. 2006, *ApJ*, 651, 1256
 Kidger, M. R. 2003, *A&A*, 408, 767
 Knight, M. M., Schleicher, D. G., Farnham, T. L., Schwieterman, E. W., & Christensen, S. R. 2012, *AJ*, 144, 153
 Lamy, P. & Toth, I. 2009, *Icarus*, 201, 674
 Lamy, P. L., Toth, I., Groussin, O., et al. 2008, *A&A*, 489, 777
 Lamy, P. L., Toth, I., Weaver, H. A., et al. 2006, *A&A*, 458, 669
 Landolt, A. U. 1992, *AJ*, 104, 340
 Lara, L. M., de León, J., Licandro, J., & Gutiérrez, P. J. 2005, *Earth Moon and Planets*, 97, 165
 Lara, L. M., Lin, Z.-Y., Rodrigo, R., & Ip, W.-H. 2011, *A&A*, 525, A36
 Lowry, S., Duddy, S. R., Rozitis, B., et al. 2012, *A&A*, 548, A12
 Lowry, S. C., Fitzsimmons, A., & Collander-Brown, S. 2003, *A&A*, 397, 329
 Marcus, J. N. 2007, *International Comet Quarterly*, 29, 119
 Meech, K. J., A'Hearn, M. F., Adams, J. A., et al. 2011, *ApJ*, 734, L1
 Meech, K. J., Jewitt, D., & Ricker, G. R. 1986, *Icarus*, 66, 561
 Meech, K. J. & Jewitt, D. C. 1987, *A&A*, 187, 585
 Meech, K. J. & Svoreň, J. 2004, in *Comets II*, ed. M. C. Festou, H. U. Keller, & H. A. Weaver (University of Arizona Press), 317–335
 Mueller, B. E. A. 1992, in *Asteroids, Comets, Meteors 1991*, ed. A. W. Harris & E. Bowell, 425–428
 Ootsubo, T., Kawakita, H., Hamada, S., et al. 2012, *ApJ*, 752, 15
 Prialnik, D., Benkhoff, J., & Podolak, M. 2004, in *Comets II*, ed. M. C. Festou, H. U. Keller, & H. A. Weaver (University of Arizona Press), 359–387
 Schleicher, D. G. 2006, *Icarus*, 181, 442
 Schleicher, D. G., Millis, R. L., & Birch, P. V. 1998, *Icarus*, 132, 397

Table 4. Photometry from archival data

Date	Inst.	N ^a	r ^b (AU)	ΔT^c (days)	m_R ($\rho = 10,000$ km)	$m_R(r,1,0)^d$	m_R ($\rho = 5''$)	$m_R(r,1,0)$	$Af\rho^e$ (cm)	slope	calib. ^f
<i>1996 apparition:</i>											
25/06/1995	EFOSC	3	-2.50	-205	17.46	15.61	17.60	15.75	46	-1.93	APASS
12/12/1995	EMMI	1	-1.37	-36	13.15	12.22	13.87	12.94	317	-1.28	APASS
<i>2002 apparition:</i>											
09/09/2002	KISO	13	1.32	22	13.34	11.45	13.94	12.05	598	-1.90	SDSS
11/12/2002	SDSS	1	1.84	115	15.35	13.70	15.97	14.31	146	-1.29	SDSS
10/02/2003	EFOSC	1	2.30	177	15.57	14.57	16.39	15.39	103	-1.21	SDSS
08/03/2003	EFOSC	10	2.49	203	15.91	14.94	16.68	15.70	86	-1.21	SDSS
25/03/2003	EMMI	2	2.61	220	16.61	15.30	17.26	15.95	67	-1.21	SDSS
30/04/2003	FORS	5	2.86	256	18.08	15.97	18.38	16.27	44	–	SDSS
01/05/2003	FORS	5	2.87	257	18.06	15.93	18.35	16.22	45	-1.00	SDSS
02/05/2003	FORS	8	2.87	258	18.10	15.95	18.38	16.23	45	-0.70	SDSS
03/05/2003	FORS	9	2.88	259	18.13	15.96	18.40	16.24	45	-1.15	SDSS
04/05/2003	FORS	7	2.89	260	18.18	16.00	18.44	16.26	43	–	SDSS
03/06/2003	FORS	2	3.08	290	18.93	16.23	18.83	16.13	40	-0.82	SDSS
04/06/2003	FORS	1	3.09	291	19.20	16.49	19.11	16.40	32	-1.24	SDSS
19/06/2003	FORS	2	3.19	306	19.42	16.51	19.18	16.27	33	-0.94	SDSS
20/06/2003	FORS	1	3.19	307	19.42	16.50	19.18	16.26	33	-1.07	SDSS
23/06/2003	FORS	1	3.21	310	19.50	16.55	19.23	16.27	32	-1.59	SDSS
24/06/2003	FORS	1	3.22	311	19.47	16.50	19.19	16.23	34	-1.41	SDSS
23/02/2004	SUSI	4	4.47	555	21.50	18.27	21.10	17.87	13	-2.21	ESO (n)
29/04/2004	EFOSC	5	4.73	621	21.65	18.76	21.56	18.67	9	-2.38	SDSS
16/06/2004	FORS	10	4.89	669	22.42	19.05	22.04	18.67	7	-2.60	Tubiana
<i>2009 apparition:</i>											
30/05/2006	FORS	61	-5.61	-1005	22.68	19.36	22.65	19.32	7	-2.64	ESO (n)
17/08/2006	FORS	3	-5.51	-926	23.13	19.32	–	–	7	–	Tubiana
27/03/2008	FORS	7	-3.39	-338	20.38	17.19	20.29	17.10	20	–	Landolt
29/03/2008	FORS	7	-3.38	-336	20.47	17.30	20.57	17.40	18	-2.55	Landolt
30/03/2008	FORS	7	-3.38	-335	20.30	17.13	20.28	17.11	21	-2.50	Landolt
31/05/2008	FORS	8	-2.98	-273	18.90	16.54	18.93	16.57	28	-1.97	Landolt
03/06/2008	FORS	8	-2.96	-270	18.76	16.45	18.80	16.50	30	-1.91	Landolt
04/06/2008	FORS	8	-2.95	-269	18.78	16.49	18.83	16.54	29	-1.89	Landolt
04/07/2008	FORS	6	-2.75	-239	17.77	16.10	17.90	16.23	36	-1.92	Landolt
10/08/2008	FORS	5	-2.48	-202	16.16	15.22	16.51	15.56	66	-1.72	Landolt
03/09/2008	FORS	16	-2.30	-178	16.23	15.22	16.58	15.57	56	-1.70	ESO (n)
05/09/2008	FORS	16	-2.28	-176	15.90	14.87	16.27	15.24	77	-1.79	Landolt
06/09/2008	FORS	16	-2.28	-175	15.96	14.93	16.32	15.28	73	-1.62	Landolt
07/09/2008	FORS	16	-2.27	-174	16.21	15.17	16.56	15.51	58	-1.63	ESO (n)
13/09/2008	FORS	1	-2.22	-168	15.94	14.84	16.27	15.17	75	-1.77	Landolt
21/10/2008	FORS	5	-1.93	-130	15.99	14.47	16.31	14.80	79	-1.71	ESO (n)
25/10/2008	FORS	5	-1.90	-126	15.81	14.26	16.16	14.60	93	-1.85	ESO (n)
26/10/2008	FORS	5	-1.89	-125	16.01	14.45	16.33	14.76	78	-1.86	ESO (n)
25/01/2009	LOT	–	-1.31	-34	13.52	11.69	–	–	476	–	Lara
28/01/2009	EFOSC	3	-1.30	-31	13.62	11.79	13.97	12.13	426	-1.65	ESO (d)
30/01/2009	LOT	–	-1.29	-29	13.46	11.62	–	–	490	–	Lara
31/01/2009	LOT	–	-1.29	-28	13.46	11.63	–	–	486	–	Lara
23/02/2009	LOT	–	-1.25	-5	13.05	11.21	–	–	666	–	Lara
25/02/2009	LOT	–	-1.25	-3	13.37	11.53	–	–	497	–	Lara
26/02/2009	LOT	–	-1.25	-2	12.97	11.12	–	–	721	–	Lara
12/03/2009	LOT	–	1.26	12	12.87	11.01	–	–	813	–	Lara
19/03/2009	CAFOS	–	1.27	19	13.04	11.16	–	–	724	–	Lara
15/02/2010	EFOSC	5	3.49	352	19.93	17.34	19.86	17.27	19	-1.88	SDSS
16/02/2010	EFOSC	3	3.49	353	20.02	17.44	19.96	17.38	17	-2.29	SDSS
14/07/2010	EFOSC	3	4.26	501	21.74	18.30	21.15	17.72	11	–	SDSS

(a)

Number of images used. ^(b) Heliocentric distance. Negative numbers indicate pre-perihelion, positive post-perihelion. ^(c) Time before or after perihelion date. ^(d) Magnitude reduced to unit geocentric distance and zero phase angle. ^(e) Using $\rho = 10,000$ km at the comet, and corrected to zero phase angle. ^(f) Calibration source for each night: APASS / SDSS - field stars from these catalogues; ESO - nightly (n) or default (d) zeropoints from ESO web page; Landolt - zeropoint calculated using observations of Landolt/Stetson standard stars on the same night; Tubiana - zeropoint solutions taken from [Tubiana \(2008\)](#) (from Landolt stars); Lara - photometry calculated from $Af\rho$ values reported in [Lara et al. \(2011\)](#). The $Af\rho$ value quoted here has been corrected to zero phase (Lara measurements were all taken at $\sim 36^\circ$).