



Open Research Online

The Open University's repository of research publications and other research outputs

AKARI far-infrared all sky survey

Conference or Workshop Item

How to cite:

Doi, Y.; Etxaluze, M.; White, G.; Figuered, E.; Chinone, Y.; Hattori, M.; Ikeda, N.; Kitamura, Y.; Komugi, S.; Nakagawa, T.; Yamauchi, C.; Matsuoka, Y.; Kaneda, H.; Kawada, M. and Shibai, H. (2009). AKARI far-infrared all sky survey. In: SPICA joint European/Japanese Workshop (Heras, A. M.; Swinyard, B. M.; Isaak, K. G. and Goicoechea, J. R. eds.), 04018.

For guidance on citations see [FAQs](#).

© 2009 Owned by the authors

Version: Version of Record

Link(s) to article on publisher's website:

<http://dx.doi.org/doi:10.1051/spica/200904018>

http://spica.edpsciences.org/index.php?option=com_toc&url=/articles/spica/abs/2009/01/contents/contents.html

Copyright and Moral Rights for the articles on this site are retained by the individual authors and/or other copyright owners. For more information on Open Research Online's data [policy](#) on reuse of materials please consult the policies page.

oro.open.ac.uk

This is an Open Access article distributed under the terms of the [Creative Commons Attribution-Noncommercial License](https://creativecommons.org/licenses/by-nc/4.0/), which permits unrestricted use, distribution, and reproduction in any noncommercial medium, provided the original work is properly cited.

AKARI FAR-INFRARED ALL SKY SURVEY

Y. Doi,¹ M. Etxaluze Azkonaga^{2,3}, G. White^{2,3}, E. Figuered⁴, Y. Chinone⁵, M. Hattori⁵, N. Ikeda⁶, Y. Kitamura⁶, S. Komugi⁶, T. Nakagawa⁶, C. Yamauchi⁶, Y. Matsuoka⁷, H. Kaneda⁷, M. Kawada⁷, H. Shibai⁸, and the AKARI team

¹Department of Earth Science and Astronomy, Graduate School of Arts and Sciences, The University of Tokyo, Komaba 3-8-1, Meguro, Tokyo, 153-8902, Japan

²Department of Physics & Astronomy, The Open University, Milton Keynes, MK7 6BJ, United Kingdom

³Space Science and Technology Dept., The Rutherford Appleton Laboratory, Didcot OX11 0QX, United Kingdom

⁴Instituto de Astronomia, Geofísica e Ciências Atmosféricas, Departamento de Astronomia, Universidade de São Paulo, Rua do Matão 1226, Cidade Universitária 05508-900, São Paulo SP, Brazil

⁵Astronomical Institute, Graduate School of Science, Tohoku university, Aramaki, Aoba-ku, Sendai, 980-8578, Japan

⁶Institute of Space and Astronautical Science, Japan Aerospace Exploration Agency, Yoshinodai 3-1-1, Sagami-hara, Kanagawa, 229-8510, Japan

⁷Department of Physics and Astrophysics, Nagoya University, Furocho, Chikusa, Nagoya, 464-8602, Japan

⁸Department of Earth and Space Science, Graduate School of Science, Osaka University, 1-1 Machikaneyama, Toyonaka 560-0043, Osaka, Japan

ABSTRACT

We demonstrate the capability of *AKARI* for mapping diffuse far-infrared emission and achieved reliability of all-sky diffuse map. We have conducted an all-sky survey for more than 94% of the whole sky during the cold phase of *AKARI* observations in 2006 Feb. – 2007 Aug. The survey in the far-infrared waveband covers 50 μm – 180 μm with four bands centered at 65 μm , 90 μm , 140 μm , and 160 μm and spatial resolution of 30'' – 40'' (FWHM). This survey has allowed us to make a revolutionary improvement compared to the IRAS survey that was conducted in 1983 in both spatial resolution and sensitivity after more than a quarter of a century. Additionally, it will provide us the first all-sky survey data with high-spatial resolution beyond 100 μm . Considering the extreme importance of the *AKARI* far-infrared diffuse emission map, we are now investigating carefully the quality of the data for possible release of the archival data. Critical subjects in making an image of diffuse emission from the detected signal are the transient response and the long-term stability of the far-infrared detectors. Quantitative evaluation of these characteristics is the key to achieve sensitivity comparable to or better than that for point sources ($< 20 - 95$ [MJy/sr]). We describe current activities and progress that are focused on making high quality all-sky survey images of the diffuse far-infrared emission.

Key words: Surveys – Atlases – ISM: general – Galaxy: general – Galaxies: general – Infrared: ISM – Infrared: galaxies

1. AKARI SATELLITE AND THE AKARI ALL-SKY SURVEY

AKARI is the first Japanese satellite dedicated for infrared (IR) astronomy (Murakami et al., 2007). The satellite was launched in February 2006. Its telescope with a primary

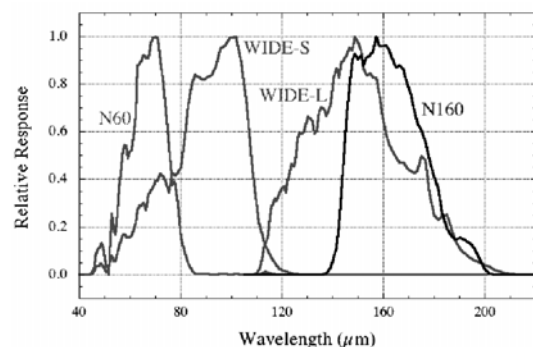


Figure 1. Spectral responses of the *AKARI* FIR four bands centered at 65 μm (N60), 90 μm (WIDE-S), 140 μm (WIDE-L), and 160 μm (N160). Note that *AKARI* has continuous wavebands covering 50–180 μm so that we can make a precise evaluation of the total FIR intensity from inband flux of *AKARI* observations (see §4).

mirror of a diameter of $\phi = 68.5$ cm as well as the focal plane instruments were cooled down with liquid Helium cryogen and mechanical JT coolers as a support (Nakagawa et al., 2007). During its cold operational phase with liquid Helium (cold phase; March 2006 – August 2007), infrared observations in 2 – 180 μm wavelength were carried out.

One of the key observations of the *AKARI* mission was to conduct an all-sky survey in the mid- and far-IR (MIR and FIR) wavelengths centered at 9 μm , 18 μm , 65 μm , 90 μm , 140 μm , and 160 μm . In this contribution, we will discuss FIR part of the survey observation.

Specifications of the FIR wavebands are shown in Table 1. Four wavebands continuously cover 50 – 180 μm as shown in Figure 1 (also see Kawada et al. 2007). During the survey observation, the telescope direction is being kept opposite to the earth centre. Since the *AKARI* satellite was launched into a sun-synchronous polar orbit and

Table 1. Specifications of AKARI FIR detectors (Kawada et al. 2007, Shirahata 2009).

Band name	N60	WIDE-S	WIDE-L	N160	
Center wavelength	65	90	140	160	[μm]
Wavelength range	50 – 80	60 – 110	110 – 180	140 – 180	[μm]
Array format	20×2	20×3	15×3	15×2	[pixels]
Pixel scale ¹	$26''.8 \times 26''.8$		$44''.2 \times 44''.2$		
Pixel pitch ¹	$29''.5 \times 29''.5$		$49''.1 \times 49''.1$		
FWHM	$32''.05 \pm 0''.10$	$30''.17 \pm 0''.08$	$40''.85 \pm 0''.10$	$38''.23 \pm 0''.15$	
Detector device	Monolithic Ge:Ga array		Stressed Ge:Ga array		

¹At the array center.

is revolving around the earth every 100 minutes, strips of the sky along a great circle with $8'$ – $12'$ width, which is the width of detector arrays, are scanned with a constant scan speed of $3'.6/\text{sec}$.

Due to the yearly revolution of the earth, the scan direction is shifted $4'$ per satellite revolution in longitudinal direction or in the cross-scan direction. This shift angle corresponds to about half or one-third of the detector widths so that we can observe a region in the sky twice or more with a continuous survey observation.

The whole sky is covered with half-a-year continuous observation except for the regions that cannot be surveyed due to moon-shine, heavy bombardment of high-energy particles due to anomalous geomagnetic field above South America (South-Atlantic Anomaly: SAA), and so on.

Pointed observations of specific sources and/or regions also hinder the survey observation by blocking 30-minute observational time per observation. In these observations, FIR 4 detectors map the sky with a scan speed of $7''.5/\text{sec}$, $15''/\text{sec}$, or $30''/\text{sec}$. These speeds are much slower (slow-scan observations) than those of the survey observation, so that the data have better quality than the survey data with much more spatial samplings and smaller artifacts due to non-linear behaviour of the detectors (slow-response; see also §2). We make comparisons between survey data and slow-scan data taken at the same region of the sky to evaluate the reliability of the data in §3.

Observational gaps in the first six-month operation were compensated in later periods within the limit of satellite attitude control; cross-scan offset $< \pm 1^\circ$. After about 17 months of survey period (cold phase), more than 94% of the sky have been observed twice or more so that we have conducted a FIR all-sky survey that virtually covers the whole sky as shown in Figure 2.

2. DATA ANALYSIS

We are now developing an image processing program. Here we describe the current status of the development.

Direction of detector FOV is determined by post-flight analysis of NIR star camera. Long-term drift of the detector response is corrected by a calibration sequence using a

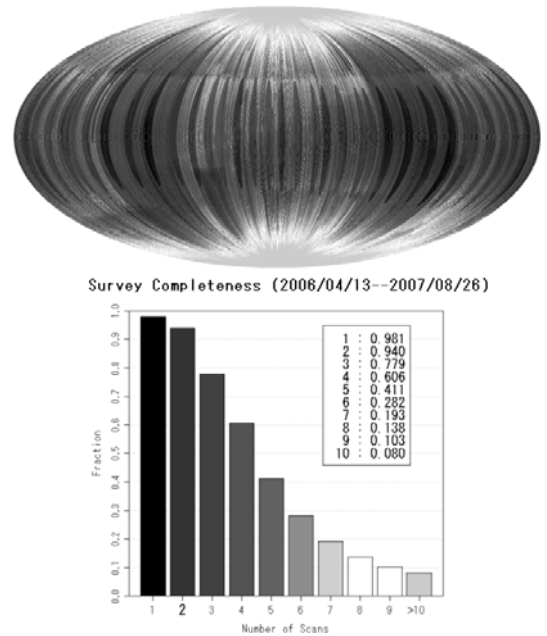


Figure 2. Sky coverage of the AKARI all-sky survey in ecliptic coordinates (top panel). Cumulative fraction of the sky coverage as a function of the scan number is shown in the bottom panel.

cold shutter (dark and controlled photon influx by internal calibration light) as well as periodic flashing of the calibration light in every one-minute during the observation (Kawada et al. 2007, Yamamura et al. 2009).

In addition to the long-term drift, non-linear behaviour of the detector is another major cause to distort the detector time-line signal (Kaneda et al., 2009). The distortion is corrected by applying a time-line numerical filter (Doi et al., 2009).

The resultant data are used to process an image. A preliminary image is created with a rather large grid size as compared to the PSF so that the image data have sufficiently large samplings in each bin ensuring a reliable removal of outliers and/or smoothing out correction residuals of the detector sensitivity drift. By referring to this preliminary image, anomalous data, including spikes due to cosmic ray hitting and so on, are removed from the raw

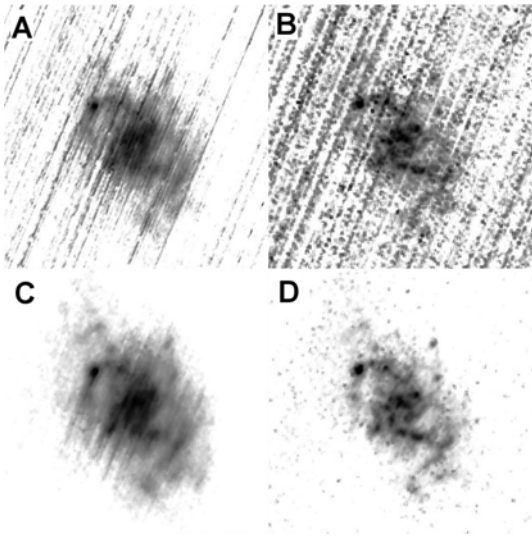


Figure 3. FIR $140\ \mu\text{m}$ survey images of M33 for illustrating the efficiency of the slow-response correction and the destriping; A: original image, B: with slow-response correction, C: with destriping, D: the resultant image with the two corrections. Image sizes are $1^\circ \times 1^\circ$.

data. Additional correction on the long-term drift of the detector responsivity is made by adding a constant offset to each time-line data strip by referring the preliminary image. This correction works as a destriping process. A final image is then processed using the resultant data.

Figure 3 is a set of example images of M33. Effects of both corrections of the non-linear detector behaviour and the long-term responsivity drift are shown. Judging from the figure, it can be concluded that both corrections significantly improve the quality of the final product image.

3. CALIBRATION AND RELIABILITY OF THE IMAGE DATA

Here we describe our current status of data calibration and achieved reliability of image data. To evaluate the reliability, first we compare the data with slow-scan data (see §1) taken at the same region of the sky.

Figure 4 shows comparisons of NGC 253 and M101 data. Reasonably good correlations are found between the survey and the slow-scan data, showing that the slow-response correction and destriping work well for improving the quality of the survey data. The relative scatter of the correlation is estimated to be $\sim 50\%$, which can be regarded as the relative accuracy of the survey data.

A comparison of the survey data with the Spitzer observation of M33 is also shown in Figure 4. The relative scatter of the correlation is estimated as $\sim 50\%$, which is consistent with the aforementioned relative scatter of the correlation between the survey and the slow-scan data. Since we need to evaluate the relative/absolute accuracy for other regions and assess the stability of the calibra-

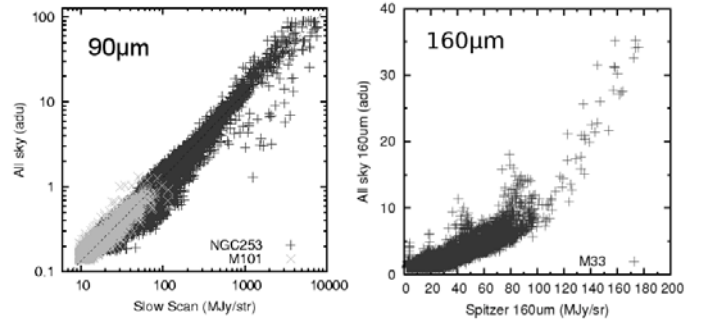


Figure 4. Cross-correlations between *AKARI* survey data with other data. The left panel shows a comparison of $90\ \mu\text{m}$ survey and slow-scan data of NGC 253 and M101. The right panel shows a comparison of $160\ \mu\text{m}$ M33 survey data with the data taken by Spitzer.

tion, which might degrade the estimated accuracy to some extent, we conclude that the currently achieved absolute and relative accuracy of the *AKARI* survey data should be better than $\pm 100\%$. Further investigation is required especially to improve the correction of the long-term sensitivity drift.

4. DISCUSSION AND SUMMARY

One of the key characteristics of the *AKARI* FIR all-sky survey is its good spatial resolution of $30'' - 40''$ (Table 1) for covering the whole sky. This advantage is illustrated in Figure 5 as the spatial resolution of *AKARI* is nearly comparable to that of Spitzer.

Wide and continuous spectral coverage of $50 - 180\ \mu\text{m}$ (Table 1, Figure 1) is another important advantage of the *AKARI* FIR all-sky survey. Observed spectra, which are averaged in individual intensity bins, are shown in Figure 6. Single-temperature gray-body spectra are also shown. Four spectral bands cover both sides of the spectral peak in shorter wavelengths ($65\ \mu\text{m}$ and $90\ \mu\text{m}$) and longer wavelengths ($140\ \mu\text{m}$ and $160\ \mu\text{m}$) enabling us to make a precise evaluation of colour temperature, as shown in the figure.

It is important to notice that excess emission is prominent in the $65\ \mu\text{m}$ band for all the intensity bins, showing significant contribution of emission from very small grains (VSGs; Désert, Boulanger, & Puget 1990). Thus $90\ \mu\text{m} / 140\ \mu\text{m}$ intensity ratio is a good indicator of the colour temperature of big grains (BGs), which are in a thermal equilibrium with interstellar radiation field (Désert, Boulanger, & Puget 1990), although possible excess emission even in $90\ \mu\text{m}$ band is found at the lowest intensity bin as the estimated colour temperature shows a small rise comparing to higher intensity bins.

Since its continuous coverage of the *AKARI* bands in $50 - 180\ \mu\text{m}$ with $90\ \mu\text{m}$ and $140\ \mu\text{m}$ bands (WideS band and WideL band; Figure 1), total intensity in $50 - 180\ \mu\text{m}$ (I_{50-180}) can be estimated simply by summing up $90\ \mu\text{m}$

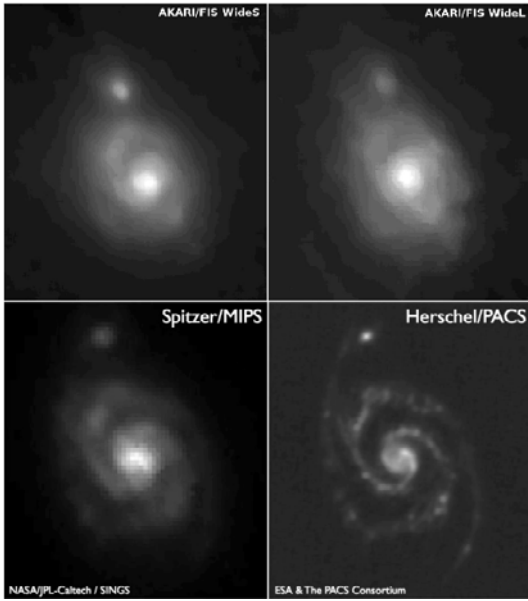


Figure 5. *M51* images observed with *AKARI*, *Spitzer*, and *Herschel*; top-left: *AKARI* 90 μm survey image, top-right: *AKARI* 140 μm survey image; bottom images are taken from *ESA Herschel* press release on 19 June 2009; bottom-left: *Spitzer*/*MIPS* 160 μm image (NASA/JPL-Caltech/SINGS), bottom-right: *Herschel*/*PACS* 160 μm image (ESA & the *PACS* consortium).

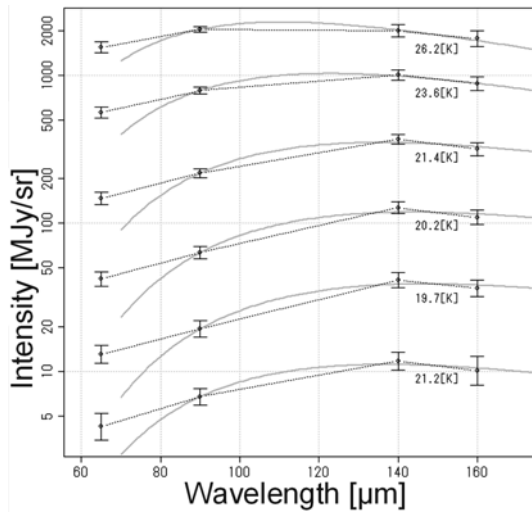


Figure 6. FIR spectra observed in *LMC*. Average spectra in intensity slices are shown. Gray lines are gray-body single temperature fittings with a spectral index $\beta = 1$.

intensity $I_\nu(\text{WideS})$ and 140 μm intensity $I_\nu(\text{WideL})$ as follows:

$$I_{50-180} = \Delta\nu I_\nu(\text{WideS}) + \Delta\nu I_\nu(\text{WideL}).$$

Doi et al. (2009) make a numerical evaluation of the fraction between I_{50-180} and I_{30-800} . The fraction is estimated to be 0.4 – 0.7 in variety of conditions of interstellar space, leading them to conclude that the *AKARI* total FIR

intensity, I_{50-180} , is a good indicator of the total infrared intensity (TIR).

Takeuchi et al. (2009) confirmed this indication by finding a good luminosity correlation between L_{50-180} and L_{TIR} for nearby galaxies, expressed by the following equation:

$$\log L_{\text{TIR}} = 0.964 \log L_{\text{AKARI}}^{\text{2band}} + 0.814,$$

$$r = 0.989.$$

It is widely accepted that I_{TIR} is a good indicator of star-formation activities (e.g. Kennicutt 1998) so that the all-sky data of the *AKARI* FIR survey can be a powerful tool to investigate the star-formation activities in the various sources including near-by star-formation regions as well as distant galaxies.

As a result, the *AKARI* FIR all-sky survey can be a new basic database that is improved from the *IRAS* survey with its higher spatial resolution and wider spectrum coverage. It can be utilized as a fundamental database for a variety of astronomical studies as well as a pilot survey for the current and the future infrared astronomical missions including *Herschel*, *Planck* and *SPICA*.

The data will be released among the *AKARI* project members after the completion of the calibration (§3) and the public will have access to the data through collaborations with project members. We are planning to release the data to the public after some proprietary time as the *AKARI* FIR point source catalogue (Yamamura et al., 2009).

REFERENCES

- Désert, F. -X., Boulanger, F., & Puget, J. L. 1990, *A&A*, 237, 215
- Doi, Y., Etxaluze Azkonaga, M., White, Glenn J. et al. 2009, proc. of the Conference "AKARI, a light to illuminate the misty Universe", in press (astro-ph/0908.0599)
- Kaneda, H., Fouks, B., Yasuda, A., et al. 2009, *PASP*, 121, 549
- Kawada, M., Baba, H., Barthel, P. D., et al. 2007, *PASJ*, 59, S389
- Kennicutt, Jr., R. C. 1998, *ARA&A*, 36, 189
- Murakami, H., Baba, H., Barthel, P. D., et al. 2007, *PASJ*, 59, S369
- Nakagawa, T., Baba, H., Barthel, P. D., et al. 2007, *PASJ*, 59, S377
- Shirahata, M., Matsuura, S., Hasegawa, S., et al. 2009, *PASJ*, 61, 737
- Suzuki, T., Kaneda, H., Matsuura, S., et al. 2008, *PASP*, 120, 895
- Takeuchi, T. T., Buat, V., Heinis, S., Giovannoli, E., Yuan, F.-T., Iglesias-Páramo, J., Murata, K. L., and Burgarella, D. 2009, *A&A*, submitted
- Yamamura, I., Makiuti, S., Ikeda, N., et al. 2009, proc. of the Conference "AKARI, a light to illuminate the misty Universe", in press