

RESEARCH ARTICLE

Validating accelerometry estimates of energy expenditure across behaviours using heart rate data in a free-living seabird

Olivia Hicks^{1,*}, Sarah Burthe², Francis Daunt², Adam Butler³, Charles Bishop⁴ and Jonathan A. Green¹

ABSTRACT

Two main techniques have dominated the field of ecological energetics: the heart rate and doubly labelled water methods. Although well established, they are not without their weaknesses, namely expense, intrusiveness and lack of temporal resolution. A new technique has been developed using accelerometers; it uses the overall dynamic body acceleration (ODBA) of an animal as a calibrated proxy for energy expenditure. This method provides high-resolution data without the need for surgery. Significant relationships exist between the rate of oxygen consumption (\dot{V}_{O_2}) and ODBA in controlled conditions across a number of taxa; however, it is not known whether ODBA represents a robust proxy for energy expenditure consistently in all natural behaviours and there have been specific questions over its validity during diving, in diving endotherms. Here, we simultaneously deployed accelerometers and heart rate loggers in a wild population of European shags (*Phalacrocorax aristotelis*). Existing calibration relationships were then used to make behaviour-specific estimates of energy expenditure for each of these two techniques. Compared with heart rate-derived estimates, the ODBA method predicts energy expenditure well during flight and diving behaviour, but overestimates the cost of resting behaviour. We then combined these two datasets to generate a new calibration relationship between ODBA and \dot{V}_{O_2} that accounts for this by being informed by heart rate-derived estimates. Across behaviours we found a good relationship between ODBA and \dot{V}_{O_2} . Within individual behaviours, we found useable relationships between ODBA and \dot{V}_{O_2} for flight and resting, and a poor relationship during diving. The error associated with these new calibration relationships mostly originates from the previous heart rate calibration rather than the error associated with the ODBA method. The equations provide tools for understanding how energy constrains ecology across the complex behaviour of free-living diving birds.

KEY WORDS: Dynamic body acceleration, Field metabolic rate, Diving, Flying, Shag, *Phalacrocorax aristotelis*

INTRODUCTION

Energy is a central currency in the behaviour and physiology of animals (Butler et al., 2004). Individuals have a finite amount of


energy to allocate to maximising fitness and hence life history is constrained by energetics (Brown et al., 2004). Such constraints can result in trade-offs between survival and reproduction (Brown et al., 2004; Halsey et al., 2009). By understanding energetics, we are able to gain a more mechanistic understanding of these trade-offs. To achieve this, we need to quantify how energy is allocated and partitioned to different behaviours and processes to understand how life-history decisions are made (Green et al., 2009; Tomlinson et al., 2014), and improve the predictive power of species distribution or population dynamic models (Buckley et al., 2010).

The two main techniques for measuring energy expenditure in the wild are the doubly labelled water method and the heart rate method (Butler et al., 2004; Green, 2011). The doubly labelled water method provides a single estimate of the rate of oxygen consumption (\dot{V}_{O_2}) over the course of the experiment with no frequency or intensity information (Butler et al., 2004; Halsey et al., 2008). The doubly labelled water technique is a well-accepted method owing to extensive validations and is widely used because of the relative ease of implementation (Butler et al., 2004; Halsey et al., 2008). The heart rate method relies on the physiological relationship between heart rate (f_H) and \dot{V}_{O_2} , and can provide high-resolution estimates of energy expenditure in free-living animals. However, the f_H method must be calibrated in controlled conditions and it often involves invasive surgery, particularly for aquatic animals, which can be costly to the animal (Butler et al., 2004; Green, 2011; Green et al., 2009). Information on the behavioural mode of the individual is not inherent or easily estimated in either the doubly labelled water or heart rate methods. Therefore, without extra assumptions (e.g. Portugal et al., 2012; Green et al., 2009) or secondary loggers, they have limited capacity to estimate behaviour-specific energy expenditure.

Recently, a new technique has been developed using accelerometers to measure the overall dynamic body acceleration (ODBA) of an animal as a proxy for energy expenditure (Halsey et al., 2011a; Wilson et al., 2006). Energy costs of animal movement often constitute the majority of energy expended (Karasov, 1992); therefore, body acceleration should correlate with energy expenditure and provide an index of \dot{V}_{O_2} (Elliott et al., 2013; Gleiss et al., 2011; Halsey et al., 2011a; Wilson et al., 2006). Significant calibration relationships exist between \dot{V}_{O_2} and ODBA across a number of taxa in controlled conditions (Halsey et al., 2008, 2009). Additionally, accelerometer data can provide high-resolution behavioural information (Yoda et al., 2001), presenting an opportunity to estimate the energetic cost of different behaviours in free-living individuals (Halsey et al., 2011a; Wilson et al., 2006). Because of the miniaturisation of accelerometer loggers and their ability to collect high-resolution data without surgery, the use of this technique in the field of ecological energetics has grown substantially in recent years, with research focusing particularly on marine vertebrates (Halsey et al., 2009; Tomlinson et al., 2014; Wilson et al., 2006). However, muscle efficiency may vary across

¹Department of Earth, Ocean and Ecological Sciences, School of Environmental Sciences, University of Liverpool, Liverpool L69 3GP, UK. ²Centre for Ecology & Hydrology, Bush Estate, Penicuik, Midlothian EH26 0QB, UK. ³Biomathematics and Statistics Scotland, James Clerk Maxwell Building, The King's Buildings, Peter Guthrie Tait Road, Edinburgh EH9 3FD, UK. ⁴School of Biological Sciences, Bangor University, Gwynedd LL57 2UW, UK.

*Author for correspondence (och@liv.ac.uk)

 O.H., 0000-0002-6938-9670

This is an Open Access article distributed under the terms of the Creative Commons Attribution License (<http://creativecommons.org/licenses/by/3.0>), which permits unrestricted use, distribution and reproduction in any medium provided that the original work is properly attributed.

locomotory modes, meaning the relationship between oxygen consumption and accelerometry may also differ among modes (Gómez Laich et al., 2011). In particular, there have been concerns over the use of ODBA as a proxy for energy expenditure during diving, given equivocal results across several air-breathing species in captive and semi-captive conditions (Fahlman et al., 2008a,b; Halsey et al., 2011b). This may be particularly problematic in volant birds as they operate in both air and water, and the higher density and hence resistance of water versus air can dampen movements at the same level of power output (Gleiss et al., 2011; Halsey et al., 2011b). The indirect metabolic costs of hypothermia may also complicate the relationship (Enstipp et al., 2006). These findings contrast with studies that have established the effectiveness of f_H as a proxy for energy expenditure under similar conditions (Green et al., 2005; White et al., 2011).

As with the heart rate method, calibration of ODBA is required before it can be used to estimate energy expenditure. However, calibrations performed in controlled environments such as treadmills or dive tanks may cause problems for extrapolation to free-living animals, as they do not fully cover the scope of complex natural behaviours (Elliott et al., 2013; Gómez Laich et al., 2011; Green et al., 2009). Given the importance of quantifying the energetic cost of behaviours to understand the fitness consequences in wild populations, it is crucial to validate the accelerometry technique across the natural range of locomotory modes in free-living animals. Validations exist using the doubly labelled water method, which show that ODBA predicts daily averages of energy expenditure (Elliott et al., 2013; Jeanniard-du-Donat et al., 2016; Stothart et al., 2016). However, as the accelerometry technique has developed and is now able to discern and estimate energy expenditure across fine scale behaviours, it is timely to validate these measurements with a technique with equally high resolution (Green et al., 2009).

In this study, we aimed to validate the accelerometry technique against the more established heart rate method in wild free-living European shags, *Phalacrocorax aristotelis* (Linnaeus 1761), a diving seabird species. As calibration relationships exist between \dot{V}_{O_2} and ODBA and f_H for this genus (White et al., 2011; Wilson et al., 2006), we were able to directly compare these estimates of energy expenditure in a free-ranging bird for the first time (Weimerskirch et al., 2016). We simultaneously measured f_H and acceleration across known behavioural states, including resting, flight and diving, at high temporal resolution, across the natural behavioural range of this diving bird. This allowed us to address the following questions. (1) When using calibration relationships developed in the laboratory, how do estimates of \dot{V}_{O_2} derived from ODBA compare with those derived from f_H at fine temporal scales across behaviours? (2) Is there value in combining what we know from f_H -derived estimates of \dot{V}_{O_2} to generate calibration relationships to predict behaviour-specific estimates of ODBA-derived \dot{V}_{O_2} ?

MATERIALS AND METHODS

The study was carried out on the Isle of May National Nature Reserve, south-east Scotland (56°11'N, 2°33'W) during the breeding season of 2011. European shags are medium-sized foot-propelled diving seabirds that feed benthically on small fish such as sandeel (*Ammodytes marinus*) and butterfish (*Pholis gunnellus*) (Watanuki et al., 2005, 2008). During chick rearing, they typically make 1–4 foraging trips a day (Sato et al., 2008; Wanless et al., 1998). Twelve adult female European shags were captured on the nest during incubation using a crook on the end of a long pole.

Females were used to reduce inter-individual variation in \dot{V}_{O_2} estimates. Birds were anaesthetised by a trained veterinary anaesthetist (using isoflurane-inhaled anaesthesia) to allow for the implantation of combined acceleration and heart-rate logger devices. This procedure took approximately 60 min and, once recovered, birds were kept for approximately 40 min before being released. Continuous observation of four birds in the field suggested birds resumed normal behaviour in 24 h. Eleven of the 12 instrumented birds were recaptured in the same manner, approximately 35 days later, and anaesthetised to remove the logger. The 12th individual evaded capture as a result of a failed breeding attempt and was recaptured and its logger removed in the 2012 breeding season. Ten birds fledged at least one chick (one brood failed in a storm) in 2011 and the 12th bird successfully bred in 2012. A binomial generalised linear model (GLM) was conducted to compare the breeding success of instrumented birds ($n=12$) with that of uninstrumented birds ($n=195$). Instruments had no significant effect on breeding success ($Z=0.77$, $P=0.44$, d.f.=205). Eight of the 12 loggers were fully functional and recorded from 4 to 33 days of data, totalling 162 days of activity during the breeding season. All studies were carried out with the permission of Scottish Natural Heritage, following the Animals (Scientific Procedures) Act 1986 under UK Home Office licence regulation (PPL 40/3313).

Instruments

Loggers were custom-built and measured f_H , tri-axial acceleration and depth. The data loggers (50 mm with a diameter of 13 mm, 25 g; 1.6% of the body mass of the sampled individuals, mean±s.d. mass=1561±38 g) and were programmed to store acceleration at 50 Hz, f_H every second and depth with a resolution of 0.02 m. Devices were sterilised by immersion in chlorhexidine gluconate in alcohol and rinsed in saline.

Data preparation

Coarse-scale behaviours were categorised from accelerometer data to differentiate between diving, flying and resting (the three main activities of shags) in two steps. First, the ethographer software package (Sakamoto et al., 2009) from IGOR Pro (2000, version 6.3.5; Wavemetrics Inc., Portland, OR, USA) was used to assign data as diving or non-diving behaviour through supervised cluster analysis using k means methods on the depth trace (Sakamoto et al., 2009). Second, the remaining accelerometer data was assigned as either flight or resting behaviour (either at sea or on land) using frequency histograms of accelerometer metrics to discriminate between these two coarse-scale behavioural states (Collins et al., 2015). Histograms of standard deviation of the heave axis and pitch (the angle of the device and therefore also of the bird in the surge axis) calculated over 60 s were used to discriminate between flight and rest behaviour:

$$\text{Pitch} = \text{Arctan} \left(\frac{x}{(y^2 + z^2)^{1/2}} \right) \times \left(\frac{180}{\pi} \right), \quad (1)$$

where x is acceleration (g) in the surge axis, y is acceleration (g) in the sway axis and z is acceleration (g) in the heave axis.

ODBA was calculated by first smoothing each of the three acceleration channels with a running mean to represent acceleration primarily due to gravity. In our study, the running mean was 1 s (i.e. 50 data points) as in Collins et al. (2015). The smoothed value was then subtracted from the corresponding unsmoothed data for that time interval to produce a value for g resulting primarily from

dynamic acceleration (Wilson et al., 2006). Derived values were then converted into absolute positive units, and the values from all three axes were summed to give an overall value for dynamic acceleration experienced. Estimates of the rate of oxygen consumption (\dot{V}_{O_2} , ml min⁻¹), were derived from values of both f_H and ODBA using calibrations conducted in the laboratory on a congeneric species of seabird, the great cormorant, *Phalacrocorax carbo* (see the Appendix for calibration equations; White et al., 2011; Wilson et al., 2006). Great cormorants and European shags are very similar in their geographical ranges, behaviour and physiology; thus, we feel confident that the original calibrations can be used for the European shag. All estimates were ‘whole animal’ as both calibration procedures took intra-individual variation in body mass into account. Locomotory modes included resting, walking and diving during f_H calibrations, and walking and resting during ODBA calibration. There are no empirical measurements of \dot{V}_{O_2} for flight in great cormorants. However, previous estimates of \dot{V}_{O_2} during flight from f_H are comparable to modelled estimates, suggesting that this f_H - \dot{V}_{O_2} relationship is robust for flight.

Finally, a dataset was created containing values of ODBA, f_H and both estimates of \dot{V}_{O_2} averaged across each behavioural period per individual, defined as a period of any length of one of the three behavioural states before the next behavioural state begins. We did not constrain the duration of behavioural periods, but took the duration of each period into account during analyses. This dataset was cropped to three full 24 h days during incubation for each individual to keep the duration of data consistent across individuals.

Data analysis

There were two objectives in the analysis: firstly, to compare ODBA-derived estimates of \dot{V}_{O_2} with f_H -derived estimates of \dot{V}_{O_2} to investigate whether a one-to-one relationship exists between these two methods (question 1); and secondly, to establish whether a relationship between ODBA- and f_H -derived \dot{V}_{O_2} would allow improved prediction of behaviour-specific estimates of \dot{V}_{O_2} from accelerometry data at a fine temporal resolution (question 2).

To address question 1 (‘how do ODBA- and f_H -derived estimates of \dot{V}_{O_2} compare?’), we modelled f_H -derived \dot{V}_{O_2} using linear mixed effects models (LMMs) using the *lme4* package in R (Bates et al., 2014; <https://www.r-project.org/>). ODBA-derived \dot{V}_{O_2} and behavioural state were explanatory variables and we controlled for variation between birds by including individual as a random factor. We fitted models containing all possible combinations of the fixed effects, including models with and without interaction terms (see Table 1). Within each model, observations were weighted by the duration of each behavioural bout divided by the sum of the duration of behavioural bouts for each individual for that behaviour to provide higher weighting to behavioural bouts that are carried out for a longer duration, which represent more generalised behaviours.

Table 1. Model terms and the corresponding AIC values for LMMs comparing \dot{V}_{O_2} derived from heart rate with that derived from accelerometry

Model	Δ AIC	<i>k</i>
Behaviour × \dot{V}_{O_2} (ODBA)	0	8
Behaviour + \dot{V}_{O_2} (ODBA)	63.18	6
\dot{V}_{O_2} (ODBA)	197.76	4
Behaviour	433.01	5

LMM, generalised linear mixed effects models; \dot{V}_{O_2} , rate of oxygen consumption; *k*, a multiplier for the penalty term for complexity in calculating AIC; ODBA, overall dynamic body acceleration.

This ensured that short-lived and/or infrequently expressed behaviours were not over-represented.

To address question 2 (‘is there value in generating calibration relationships between ODBA- and f_H -derived \dot{V}_{O_2} ?’), we created a second set of LMMs. The model structure was the same as before, except that, in the fixed effects part of the model, ODBA-derived \dot{V}_{O_2} was replaced with ODBA itself.

In both model sets, model selection was based on Akaike’s information criterion (AIC), which penalises the inclusion of unnecessary parameters in models (Burnham and Anderson, 2001). The model with the lowest AIC is usually chosen to be the ‘best’ model, but models within two Δ AIC of the lowest value are generally considered to have similar empirical support to that of the best model. R^2 values were calculated using the MuMIn package in R.

Both ODBA and f_H are often used to make qualitative comparisons of energy expenditure between, for example, behavioural states or individuals (e.g. Angel et al., 2015; Green et al., 2009). As we aimed to be able to make quantitative estimates and comparisons of \dot{V}_{O_2} using ODBA (question 2), we needed to incorporate the error associated with the conversion from f_H to \dot{V}_{O_2} into our predictions. To quantify this, we developed a bootstrapping approach, which we implemented separately for each behavioural state. For each state, we used a fitted model of f_H as a function of ODBA to simulate 100 possible f_H values for given values of ODBA: these f_H values were drawn from a normal distribution with mean equal to the estimated value of f_H (based on the fitted model) and standard deviation equal to the standard error of the estimate (SEE) that was produced by the fitted model. For each of these f_H values, we then simulated 100 values of \dot{V}_{O_2} using the fitted equation, and associated SEE, from White et al. (2011). This gives a total of 10,000 simulated values of \dot{V}_{O_2} for each value of ODBA. We took the mean of these values to be our estimate for the value of \dot{V}_{O_2} , for each value of ODBA, and used the 2.5% and 97.5% quantiles to give us the associated 95% confidence limits. Both sets of SEE calculations assumed 100 measurements of ODBA from each of 10 individuals; these were assumed to be a typical sample size of individuals and average number of ODBA measurements per individual. These error distributions are calculated to enable the calibrations to be used with quantifiable error associated with the predictions. See Green et al. (2001) for a full description of how SEE calculations are made.

RESULTS

Comparison of oxygen consumption estimates

There was a positive relationship between f_H -derived \dot{V}_{O_2} and ODBA-derived \dot{V}_{O_2} (Fig. 1). The best model included an interaction between ODBA-derived \dot{V}_{O_2} and behaviour (Table 1), suggesting a difference among behaviours in the relationship between oxygen consumption estimates. Pairwise comparisons revealed differences among all three behaviours in the relationships between the estimates of \dot{V}_{O_2} made using the two techniques. The best overall model was a good fit (marginal $R^2=0.70$); however, R^2 values for behaviour-specific relationships were much lower (Table 2). When the behaviours were considered individually, there was a positive relationship for flying and resting and but no relationship for diving (Table 2). Estimates of \dot{V}_{O_2} from both f_H and ODBA showed considerable variability but sat close to the line of equality for flight and diving behaviour. However, ODBA-based estimates of \dot{V}_{O_2} were consistently greater than those estimated by f_H (Fig. 1). There was relatively little variability in ODBA-derived \dot{V}_{O_2} during resting behaviour; this can be attributed to similarly little variability in raw ODBA values (Fig. S1).

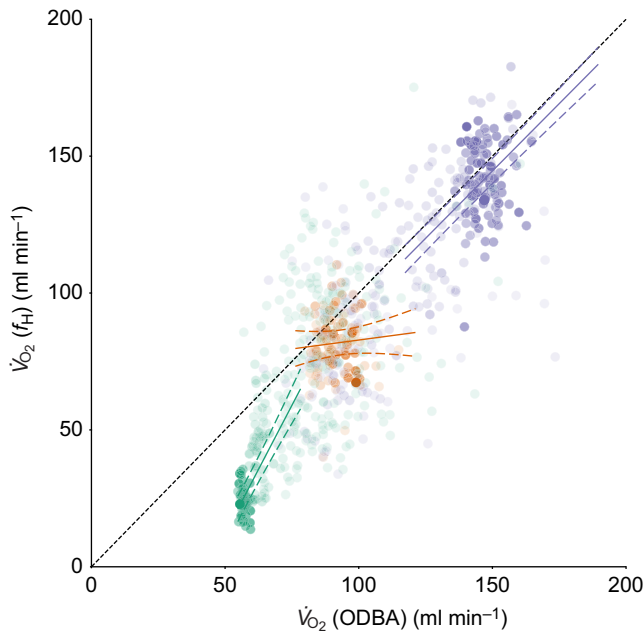


Fig. 1. The relationship between the two methods for predicting the rate of oxygen consumption (\dot{V}_{O_2}) across different behavioural states. The dotted line represents equality between the heart rate (f_H) and overall dynamic body acceleration (ODBA) methods. Behaviour-specific regression relationships (solid line) and 95% confidence intervals (dashed lines) for each behaviour (resting in green, diving in orange and flying in purple) are shown. Points vary in transparency according to the duration of time represented by each behavioural bout. The horizontal and vertical range of the regression lines indicates data points encompassing 99% of the entire duration of time spent in each behaviour.

ODBA as a predictor of \dot{V}_{O_2}

When using ODBA as a predictive tool for estimating energy expenditure, there was a positive relationship between ODBA- and f_H -derived \dot{V}_{O_2} . The best model fitted an interaction between ODBA and behaviour (Table 3). Examination of behaviour-specific relationships (Fig. 2) suggests that ODBA is a useable proxy of \dot{V}_{O_2} during flying and resting, but a poor proxy for diving (see Table 4 for behaviour-specific predictive equations). When accounting for the residual error associated with the f_H \dot{V}_{O_2} calibration, it is evident that a large amount of error is associated with the laboratory calibration between f_H and \dot{V}_{O_2} . Indeed, most of the uncertainty in predicting f_H -derived \dot{V}_{O_2} from ODBA arises from the uncertainty in the calibration of the f_H technique rather than from the estimation of the correlation between the two techniques (Fig. 2).

DISCUSSION

Relatively few studies have investigated whether ODBA represents a robust proxy for energy expenditure across natural behaviours at high resolution in free-ranging birds (Duriez et al., 2014; Weimerskirch et al., 2016). Here, we compared energy

Table 2. Regression lines for the relationship between f_H -derived \dot{V}_{O_2} and ODBA-derived \dot{V}_{O_2} , and R^2 values for each behaviour based on the best model

Parameter	Prediction	R^2 (%)
Resting \dot{V}_{O_2} (f_H)	$[1.8708 \times \text{resting } \dot{V}_{O_2} (\text{ODBA})] - 81.0493$	31.8
Diving \dot{V}_{O_2} (f_H)	$[0.1302 \times \text{diving } \dot{V}_{O_2} (\text{ODBA})] + 69.8013$	0.038
Flying \dot{V}_{O_2} (f_H)	$[0.9842 \times \text{flying } \dot{V}_{O_2} (\text{ODBA})] - 3.0607$	21.3

Table 3. Model terms and the corresponding AIC values for models predicting f_H -derived \dot{V}_{O_2} from ODBA

Model	ΔAIC	k
Behaviour \times ODBA	0	8
Behaviour + ODBA	81.28	6
ODBA	215.86	4
Behaviour	460.16	5

expenditure estimates across a range of natural behaviours in a free-living organism using both the established f_H method and accelerometry. Across behaviours, we found a good relationship between ODBA and \dot{V}_{O_2} . Within individual behaviours, we suggest that ODBA is a useable proxy of energy expenditure during flying and resting, thus opening up potential new avenues of research for quantifying energy budgets for individuals across key behaviours. However, some caution is necessary: we found that ODBA is less reliable at estimating energy expenditure during diving behaviour, though this may be due in part to lower variation in ODBA during diving than within flight or resting. We combined these findings to provide usable behaviour-specific calibration relationships between ODBA and \dot{V}_{O_2} to more accurately estimate energy expenditure using the accelerometry technique alone.

Comparison of oxygen consumption estimates

Whilst there was a good relationship between the estimates made with the two approaches, and ODBA estimates of \dot{V}_{O_2} for flight and diving sit well on the line of equality, ODBA overestimates f_H -derived \dot{V}_{O_2} for resting behaviour. It is known that ODBA estimates of energy expenditure during inactivity tend to be poorer than those in high activity because movement makes up a small proportion of energy expenditure during inactivity (Green et al., 2009; Weimerskirch et al., 2016). Differences in estimates across the two techniques for resting may also have arisen because the underlying laboratory-based calibrations with \dot{V}_{O_2} that underpin our estimates were undertaken in different conditions. Although both ODBA-derived \dot{V}_{O_2} and f_H -derived \dot{V}_{O_2} lab calibrations for great cormorants (*P. carbo*) were based on the same captive individuals, they were conducted in different seasons (November and March/June, respectively) (Gómez Laich et al., 2011; White et al., 2011; Wilson et al., 2006). Seasonal variation in basal metabolic rate (BMR) is well documented (Smit and McKechnie, 2010). In this case, the cormorants had lower BMR in the summer months (C. R. White, P. J. Butler and G. P. Martin, unpublished data). The higher resting \dot{V}_{O_2} values estimated by ODBA compared with f_H may be due to the higher resting metabolic rate incorporated into the ODBA calibration. Thus, as ODBA is not sensitive to changes in BMR and cannot record seasonal variation in metabolic rate, this may be a limitation to this approach in studies trying to estimate seasonal changes in energy expenditure within a population or species. A strength of the approach described here is that because the f_H/\dot{V}_{O_2} calibrations were made during the summer, our new predictive equations allow \dot{V}_{O_2} to be estimated from ODBA during the summer months, thus accounting for seasonal changes in BMR.

Estimates of flight costs were lower than expected based on body mass alone (Bishop et al., 2002) but consistent with previous estimates based on calibrations from a congeneric species, the great cormorant (White et al., 2011). It is possible that both f_H and ODBA underestimate \dot{V}_{O_2} during flight as Ward et al. (2002) show that \dot{V}_{O_2} during flight in two species of geese would be underestimated based on f_H during flight and a walking-only calibration

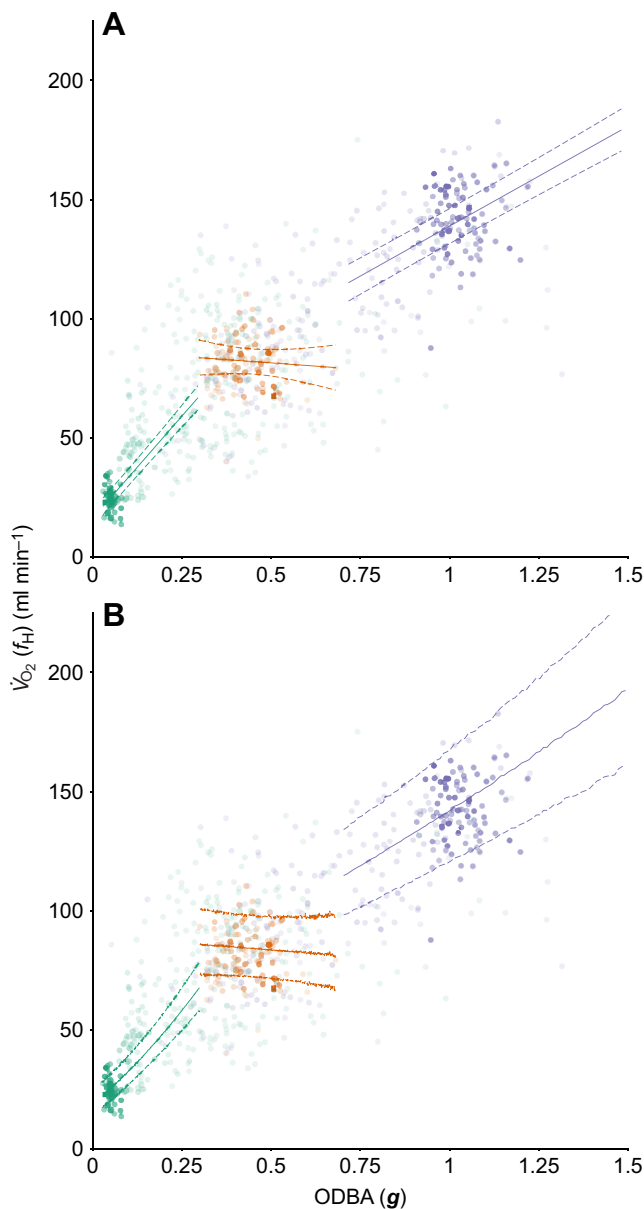


Fig. 2. The relationship between ODBA- and f_H -derived energy expenditure. Behaviour-specific regression relationships (solid line) and 95% confidence intervals (dashed lines) for each behaviour (resting in green, diving in orange and flying in purple) are shown. Point transparency varies with duration of time spent in each behavioural bout. (A) The 95% confidence intervals are taken from the model estimates without taking into account the residual error associated with converting f_H to \dot{V}_{O_2} estimates. (B) The 95% confidence intervals from the bootstrapping method accounting for the residual error associated with converting f_H to \dot{V}_{O_2} estimates.

relationship. This is due to differences in calibration relationships for walking and flying in these species of geese. However, in great cormorants, the original calibration line between f_H and

Table 4. Predictive equations for estimating \dot{V}_{O_2} from ODBA using LMMs, and R^2 values for behaviour-specific models

Parameter	Prediction	R^2 (%)
Resting \dot{V}_{O_2}	$(172.68 \times \text{resting ODBA}) + 16.133$	31.8
Diving \dot{V}_{O_2}	$(12.02 \times \text{diving ODBA}) + 76.588$	0.038
Flying \dot{V}_{O_2}	$(90.84 \times \text{flying ODBA}) + 48.218$	21.3

\dot{V}_{O_2} intersects with modelled estimates of flight \dot{V}_{O_2} , suggesting the f_H - \dot{V}_{O_2} relationship is robust for flight (Bishop et al., 2002; White et al., 2011). Additionally, the close agreement of our ODBA- and f_H -derived estimates of \dot{V}_{O_2} during flight suggests that ODBA-based estimates are also accurate. This is either a coincidence or provides support for the previous papers and methodologies. However, more research on the true costs of flight in unrestrained birds under natural conditions is urgently needed (Elliott, 2016).

ODBA as a predictor of energy expenditure

We found ODBA to be a good predictor of \dot{V}_{O_2} ; our best overall model, which includes the effect of behaviour, is comparable to other studies and calibrations, suggesting there is considerable value in this method when used across a range of behaviours. The R^2 value for our overall model is comparable but slightly lower than that for studies comparing partial dynamic body acceleration and energy expenditure by the doubly labelled water method in the wild [$R^2=0.73$ in thick billed murre (Elliott et al., 2013) and $R^2=0.91$ in pelagic cormorants (Stothart et al., 2016)] and consistently lower than measurements obtained on treadmills in the laboratory [$R^2=0.81$ – 0.93 for four bird and mammal species (Halsey et al., 2009)] and experimental dive tanks [$R^2=0.83$ for green turtles (Enstipp et al., 2011)]. The R^2 value from this study is expected to be lower than those from previous studies, as the ODBA values were not daily averages as in most previous studies, but instead were calculated over shorter time scales of behavioural bouts (Elliott, 2016; Green, 2011). However, when our data were re-examined over a daily scale, the R^2 value for the best overall model (marginal $R^2=0.97$) was higher than our calibration at finer temporal scale and more similar to previous calibrations using daily averages (see Figs. S2, S3 and Table S1).

Behavioural differences

The high temporal resolution of the calibration in this study compared with that of previous studies (Elliott et al., 2013; Jeanniard-du-Dot et al., 2016; Stothart et al., 2016) allows the more complex differences in energy expenditure between behaviours and resultant differences in predictive estimation equations between different behaviours to be quantified. All three behavioural modes had different predictive equations when estimating \dot{V}_{O_2} from ODBA. Similarly, in calibrations of daily energy expenditure using the doubly labelled water method in the field, Elliott et al. (2013) and Stothart et al. (2016) found the most parsimonious models included classification of one behaviour separately from the others. The difference in our study, however, is that the best model includes all behaviours separately. This may be driven by how well ODBA is able to reflect metabolic costs of movement in different media. ODBA provided reasonable estimates of \dot{V}_{O_2} in flight, which is not unexpected given ODBA has been shown to correlate with f_H in previous studies [frigate birds (Weimerskirch et al., 2016) and griffons (Duriez et al., 2014)]. This is further supported by correlates between wing beat frequency and f_H in bar headed geese (Bishop et al., 2015), which have a similar flapping flight to European shags. There is also evidence from studies that one calibration of energy expenditure can be applied to all behavioural modes, though these studies did not involve diving or flying behaviour (Green et al., 2009; Wilson et al., 2006).

ODBA provided poorer estimates of \dot{V}_{O_2} during diving, which supports the finding of Halsey et al. (2011b) that ODBA did not correlate with oxygen consumption over diving bouts in double crested cormorants in dive tank experiments (Halsey et al., 2011b).

Cormorant species have partially wettable plumage (Grémillet et al., 2005), which causes high rates of heat loss and therefore high dive costs (Enstipp et al., 2005). As a result, they may be susceptible to changes in metabolic rate within diving bouts (Enstipp et al., 2006; Grémillet et al., 1998), which would be expressed as changes in f_H but not in ODBA, producing no clear relationship between ODBA and \dot{V}_{O_2} .

Application of findings

By incorporating the error associated with the f_H -derived \dot{V}_{O_2} calibration (White et al., 2011), we were able to derive relationships for each behaviour to predict oxygen consumption and its associated error from ODBA values. It is notable that it is the error originating from the laboratory-based calibration between f_H and \dot{V}_{O_2} that is driving the large error distribution overall, rather than the comparison between f_H and ODBA in the field. As the ODBA technique for measuring energy expenditure is becoming increasingly popular in the field, and provides fine-scale information on the behaviour of the animal, it is essential to be able to use behaviour-specific equations as this currently accounts for most of the uncertainty in free-living animal energy budgets (Collins et al., 2016; Wilson et al., 2006). Our validation exercise indicates that for an average day, our approach gives broadly similar estimates of energy expenditure to those derived from first principles and the literature (Fig. S4). The behavioural-bout resolution of our calibration provides a natural range of behavioural bouts of varying lengths, created with free-ranging birds and natural behavioural bouts, meaning this calibration can be used at any temporal scale for resting and flight behaviour. While it is not possible to present a single equation that captures both elements of the residual error associated with predictions, we provide a script that calculates estimates with SEE for a given value of ODBA (please contact the corresponding author).

This study therefore outlines an approach to generate behaviour-specific estimates of energy expenditure from ODBA, which can be used to more accurately estimate total energy expenditure in the complex behaviour of free-living cormorant species. However, the poor predictive power of ODBA during diving reinforces the proposal that further temporal considerations may need to be incorporated for this behaviour. Whilst future recommendations include the simultaneous measurement of f_H , acceleration and \dot{V}_{O_2} with respirometry, we have provided equations that combine both f_H and ODBA techniques as predictors of behaviour-specific energy expenditure. ODBA-derived behaviour-specific estimates of energy expenditure can help pave the way for future work answering ecologically important questions and understanding the fine-scale costs of movement and foraging of diving seabirds.

APPENDIX

Existing calibration equations used in analyses

Calibration equation from Wilson et al. (2006) for the relationship between ODBA and \dot{V}_{O_2} :

$$\dot{V}_{O_2} = (92.3 \times \text{ODBA}) + 52.1. \quad (\text{A1})$$

Calibration equation from White et al. (2011) for the relationship between f_H and \dot{V}_{O_2} :

$$\dot{V}_{O_2} = 0.0064 \times (f_H^{1.63}) \times (M^{1.1}), \quad (\text{A2})$$

where M is mass.

Acknowledgements

We thank David Burdell, Giles Constant and Paul Macfarlane for assistance with anaesthesia and surgeries, Robin Spivey for logger set up and interpretation, Mark Newell for help in the field, Sarah Wanless and Mike Harris for useful discussions on the heart rate approach, and Scottish Natural Heritage for access to the Isle of May. Home office licence under the animals scientific procedures act 1986 PPL 40/3313.

Competing interests

The authors declare no competing or financial interests.

Author contributions

J.A.G., S.B. and F.D. collected the data. C.B. aided in preliminary data processing of the heart rate data for this study. O.H. processed the accelerometry data, conducted the statistical analyses and wrote the manuscript. A.B. provided statistical advice. All authors (O.H., S.B., F.D., A.B., C.B. and J.A.G.) contributed to interpreting results and improvement of this paper.

Funding

O.H. is supported by a Natural Environment Research Council (NERC) studentship. J.A.G. was supported by the Scottish Association for Marine Science for pilot work for this study. Deposited in PMC for immediate release.

Supplementary information

Supplementary information available online at <http://jeb.biologists.org/lookup/doi/10.1242/jeb.152710.supplemental>

References

- Angel, L. P., Barker, S., Berlincourt, M., Tew, E., Warwick-Evans, V. and Arnould, J. P. Y. (2015). Eating locally: Australasian gannets increase their foraging effort in a restricted range. *Biol. Open* **4**, 1298–1305.
- Bates, D., Mächler, M., Bolker, B. and Walker, S. (2014). Fitting linear mixed-effects models using lme4. *J. Stat. Softw.* **67**.
- Bishop, C. M., Ward, S., Woakes, A. J. and Butler, P. J. (2002). The energetics of barnacle geese (*Branta leucopsis*) flying in captive and wild conditions. *Comp. Biochem. Physiol. A Mol. Integr. Physiol.* **133**, 225–237.
- Bishop, C. M., Spivey, R. J., Hawkes, L. A., Batbayar, N., Chua, B., Frappell, P. B., Milsom, W. K., Natsagdorj, T., Newman, S. H., Scott, G. R. et al. (2015). The roller coaster flight strategy of bar-headed geese conserves energy during Himalayan migrations. *Science* **347**, 250–254.
- Brown, J. H., Gillooly, J. F., Allen, A. P., Savage, V. M. and West, G. B. (2004). Toward a metabolic theory of ecology. *Ecology* **85**, 1771–1789.
- Buckley, L. B., Urban, M. C., Angilletta, M. J., Crozier, L. G., Rissler, L. J. and Sears, M. W. (2010). Can mechanism inform species' distribution models? *Ecol. Lett.* **13**, 1041–1054.
- Burnham, K. P. and Anderson, D. R. (2001). Kullback-Leibler information as a basis for strong inference in ecological studies. *Wildl. Res.* **28**, 111–119.
- Butler, P. J., Green, J. A., Boyd, I. L. and Speakman, J. R. (2004). Measuring metabolic rate in the field: the pros and cons of the doubly labelled water and heart rate methods. *Funct. Ecol.* **18**, 168–183.
- Collins, P. M., Green, J. A., Warwick-Evans, V., Dodd, S., Shaw, P. J. A., Arnould, J. P. Y. and Halsey, L. G. (2015). Interpreting behaviors from accelerometry: a method combining simplicity and objectivity. *Ecol. Evol.* **5**, 4642–4654.
- Collins, P. M., Halsey, L. G., Arnould, J. P. Y., Shaw, P. J. A., Dodd, S. and Green, J. A. (2016). Energetic consequences of time-activity budgets for a breeding seabird. *J. Zool.* **300**, 153–162.
- Duriez, O., Kato, A., Tromp, C., Dell'omo, G., Vyssotski, A. L., Sarrazin, F. and Ropert-Coudert, Y. (2014). How cheap is soaring flight in raptors? A preliminary investigation in freely-flying vultures. *PLoS ONE* **9**, e84887.
- Elliott, K. H. (2016). Measurement of flying and diving metabolic rate in wild animals: review and recommendations. *Comp. Biochem. Physiol. A Mol. Integr. Physiol.* **202**, 63–77.
- Elliott, K. H., Le Vaillant, M., Kato, A., Speakman, J. R. and Ropert-Coudert, Y. (2013). Accelerometry predicts daily energy expenditure in a bird with high activity levels. *Biol. Lett.* **9**.
- Enstipp, M. R., Grémillet, D. and Lorentsen, S.-H. (2005). Energetic costs of diving and thermal status in European shags (*Phalacrocorax aristotelis*). *J. Exp. Biol.* **208**, 3451–3461.
- Enstipp, M. R., Grémillet, D. and Jones, D. R. (2006). The effects of depth, temperature and food ingestion on the foraging energetics of a diving endotherm, the double-crested cormorant (*Phalacrocorax auritus*). *J. Exp. Biol.* **209**, 845–859.
- Enstipp, M. R., Ciccione, S., Gineste, B., Milbergue, M., Ballorain, K., Ropert-Coudert, Y., Kato, A., Plot, V. and Georges, J.-Y. (2011). Energy expenditure of freely swimming adult green turtles (*Chelonia mydas*) and its link with body acceleration. *J. Exp. Biol.* **214**, 4010–4020.

- Fahlman, A., Svård, C., Rosen, D. A. S., Jones, D. R. and Trites, A. W.** (2008a). Metabolic costs of foraging and the management of O₂ and CO₂ stores in Steller sea lions. *J. Exp. Biol.* **211**, 3573-3580.
- Fahlman, A., Wilson, R., Svård, C., Rosen, D. A. S. and Trites, A. W.** (2008b). Activity and diving metabolism correlate in Steller sea lion *Eumetopias jubatus*. *Aquat. Biol.* **2**, 75-84.
- Gleiss, A. C., Wilson, R. P. and Shepard, E. L. C.** (2011). Making overall dynamic body acceleration work: on the theory of acceleration as a proxy for energy expenditure. *Methods Ecol. Evol.* **2**, 23-33.
- Gómez Laich, A., Wilson, R. P., Gleiss, A. C., Shepard, E. L. C. and Quintana, F.** (2011). Use of overall dynamic body acceleration for estimating energy expenditure in cormorants. *J. Exp. Mar. Biol. Ecol.* **399**, 151-155.
- Green, J. A.** (2011). The heart rate method for estimating metabolic rate: review and recommendations. *Comp. Biochem. Physiol. A. Mol. Integr. Physiol.* **158**, 287-304.
- Green, J. A., Butler, P. J., Woakes, A. J., Boyd, I. L. and Holder, R. L.** (2001). Heart rate and rate of oxygen consumption of exercising Macaroni penguins. *J. Exp. Biol.* **204**, 673-684.
- Green, J. A., Woakes, A. J., Boyd, I. L. and Butler, P. J.** (2005). Cardiovascular adjustments during locomotion in penguins. *Can. J. Zool.* **83**, 445-454.
- Green, J. A., Halsey, L. G., Wilson, R. P. and Frappell, P. B.** (2009). Estimating energy expenditure of animals using the accelerometry technique: activity, inactivity and comparison with the heart-rate technique. *J. Exp. Biol.* **212**, 745-746.
- Gremillet, D., Tuschy, I. and Kierspel, M.** (1998). Body temperature and insulation in diving Great Cormorants and European Shags. *Funct. Ecol.* **12**, 386-394.
- Grémillet, D., Chauvin, C., Wilson, R. P., Le Maho, Y., Grémillet, D., Chauvin, C., Wilson, R. P., Le Maho, Y. and Wanless, S.** (2005). Unusual feather structure allows partial plumage wettability in diving great cormorants *Phalacrocorax carbo*. *Oikos* **36**, 57-63.
- Halsey, L. G., Shepard, E. L. C., Hulston, C. J., Venables, M. C., White, C. R., Jeukendrup, A. E. and Wilson, R. P.** (2008). Acceleration versus heart rate for estimating energy expenditure and speed during locomotion in animals: tests with an easy model species, *Homo sapiens*. *Zoology* **111**, 231-241.
- Halsey, L. G., Shepard, E. L. C., Quintana, F., Gomez Laich, A., Green, J. A. and Wilson, R. P.** (2009). The relationship between oxygen consumption and body acceleration in a range of species. *Comp. Biochem. Physiol. A Mol. Integr. Physiol.* **152**, 197-202.
- Halsey, L. G., Shepard, E. L. C. and Wilson, R. P.** (2011a). Assessing the development and application of the accelerometry technique for estimating energy expenditure. *Comp. Biochem. Physiol. A Mol. Integr. Physiol.* **158**, 305-314.
- Halsey, L. G., White, C. R., Enstipp, M. R., Wilson, R. P., Butler, P. J., Martin, G. R., Grémillet, D. and Jones, D. R.** (2011b). Assessing the validity of the accelerometry technique for estimating the energy expenditure of diving double-crested cormorants *Phalacrocorax auritus*. *Physiol. Biochem. Zool.* **84**, 230-237.
- Jeanniard-du-Dot, T., Guinet, C., Arnould, J. P. Y., Speakman, J. R. and Trites, A. W.** (2016). Accelerometers can measure total and activity-specific energy expenditures in free-ranging marine mammals only if linked to time-activity budgets. *Funct. Ecol.* **31**, 377-386.
- Karasov, W. H.** (1992). Daily energy expenditure and the cost of activity in mammals. *Am. Zool.* **32**, 238-248.
- Portugal, S. J., Green, J. A., White, C. R., Guillemette, M. and Butler, P. J.** (2012). Wild geese do not increase prey acquisition prior to migration. *Biol. Lett.* **8**, 469-472.
- Sakamoto, K. Q., Sato, K., Ishizuka, M., Watanuki, Y., Takahashi, A., Daunt, F. and Wanless, S.** (2009). Can ethograms be automatically generated using body acceleration data from free-ranging birds? *PLoS ONE* **4**, e5379.
- Sato, K., Daunt, F., Watanuki, Y., Takahashi, A. and Wanless, S.** (2008). A new method to quantify prey acquisition in diving seabirds using wing stroke frequency. *J. Exp. Biol.* **211**, 58-65.
- Smit, B. and McKechnie, A. E.** (2010). Avian seasonal metabolic variation in a subtropical desert: Basal metabolic rates are lower in winter than in summer. *Funct. Ecol.* **24**, 330-339.
- Stothart, M. R., Elliott, K. H., Wood, T., Hatch, S. A. and Speakman, J. R.** (2016). Counting calories in cormorants: dynamic body acceleration predicts daily energy expenditure measured in pelagic cormorants. *J. Exp. Biol.* **219**, 2192-2200.
- Tomlinson, S., Arnall, S. G., Munn, A., Bradshaw, S. D., Maloney, S. K., Dixon, K. W. and Didham, R. K.** (2014). Applications and implications of ecological energetics. *Trends Ecol. Evol.* **29**, 280-290.
- Wanless, S., Grémillet, D. and Harris, M. P.** (1998). Foraging activity and performance of shags *Phalacrocorax aristotelis* in relation to environmental characteristics. *J. Avian Biol.* **29**, 49-54.
- Ward, S., Bishop, C. M., Woakes, A. J. and Butler, P. J.** (2002). Heart rate and the rate of oxygen consumption of flying and walking barnacle geese (*Branta leucopsis*) and bar-headed geese (*Anser indicus*). *J. Exp. Biol.* **205**, 3347-3356.
- Watanuki, Y., Takahashi, A., Daunt, F., Wanless, S., Harris, M., Sato, K. and Naito, Y.** (2005). Regulation of stroke and glide in a foot-propelled avian diver. *J. Exp. Biol.* **208**, 2207-2216.
- Watanuki, Y., Daunt, F., Takahashi, A., Newell, M., Wanless, S., Sato, K. and Miyazaki, N.** (2008). Microhabitat use and prey capture of a bottom-feeding top predator, the European shag, shown by camera loggers. *Mar. Ecol. Prog. Ser.* **356**, 283-293.
- Weimerskirch, H., Bishop, C., Jeanniard-du-Dot, T., Prudor, A. and Sachs, G.** (2016). Frigate birds track atmospheric conditions over months-long transoceanic flights. *Science* **353**, 74-78.
- White, C. R., Gremillet, D., Green, J. A., Martin, G. R. and Butler, P. J.** (2011). Metabolic rate throughout the annual cycle reveals the demands of an Arctic existence in Great Cormorants. *Ecology* **92**, 475-486.
- Wilson, R. P., White, C. R., Quintana, F., Halsey, L. G., Liebsch, N., Martin, G. R. and Butler, P. J.** (2006). Moving towards acceleration for estimates of activity-specific metabolic rate in free-living animals: the case of the cormorant. *J. Anim. Ecol.* **75**, 1081-1090.
- Yoda, K., Naito, Y., Sato, K., Takahashi, A., Nishikawa, J., Ropert-Coudert, Y., Kurita, M. and Le Maho, Y.** (2001). A new technique for monitoring the behaviour of free-ranging Adélie penguins. *J. Exp. Biol.* **204**, 685-690.

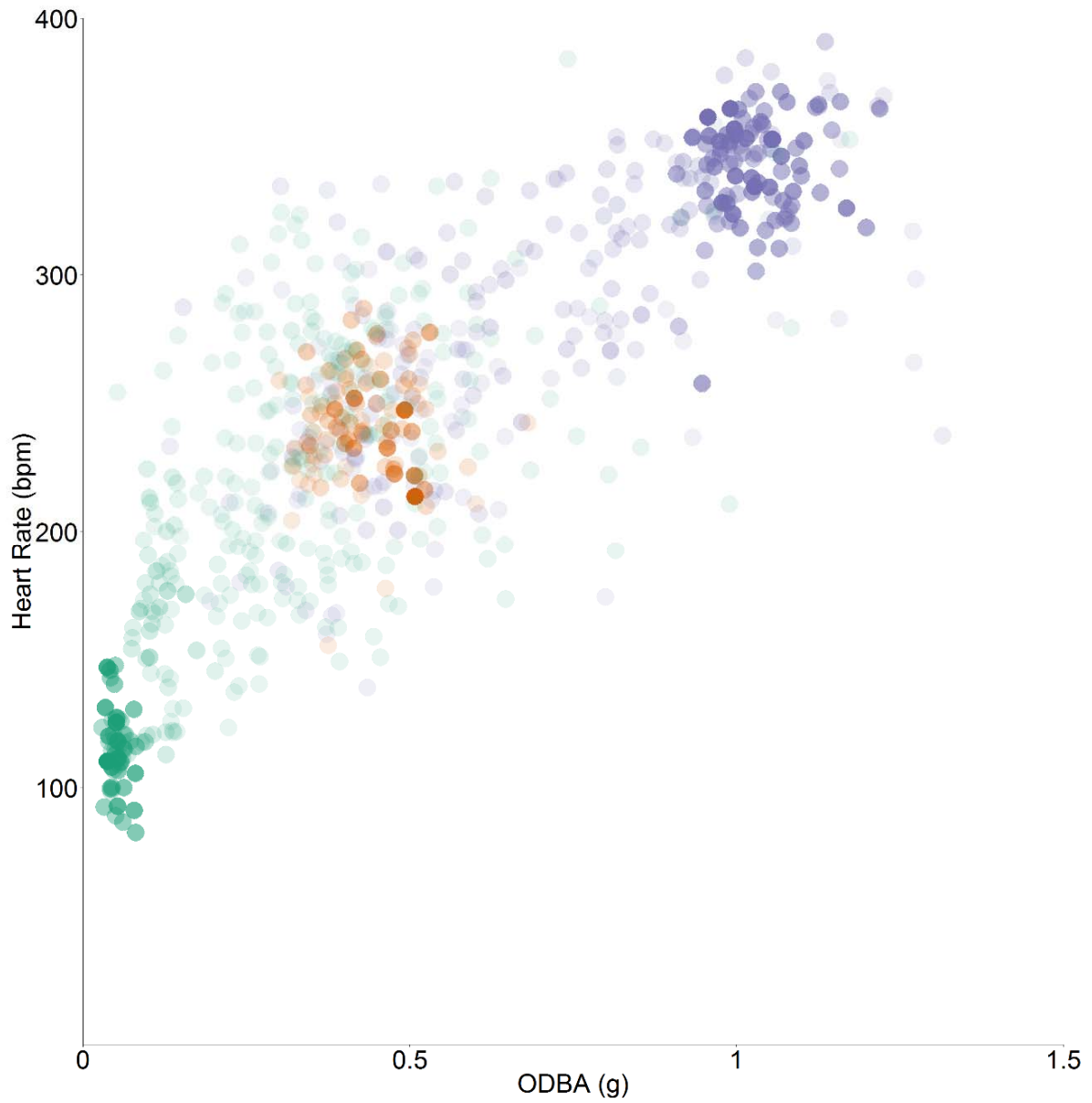


Fig. S1. The raw values of ODBA and Heart rate across different behavioural states. (Resting in green, diving in orange and flying in purple). Points vary in transparency according to the duration of time represented by each behavioural bout.

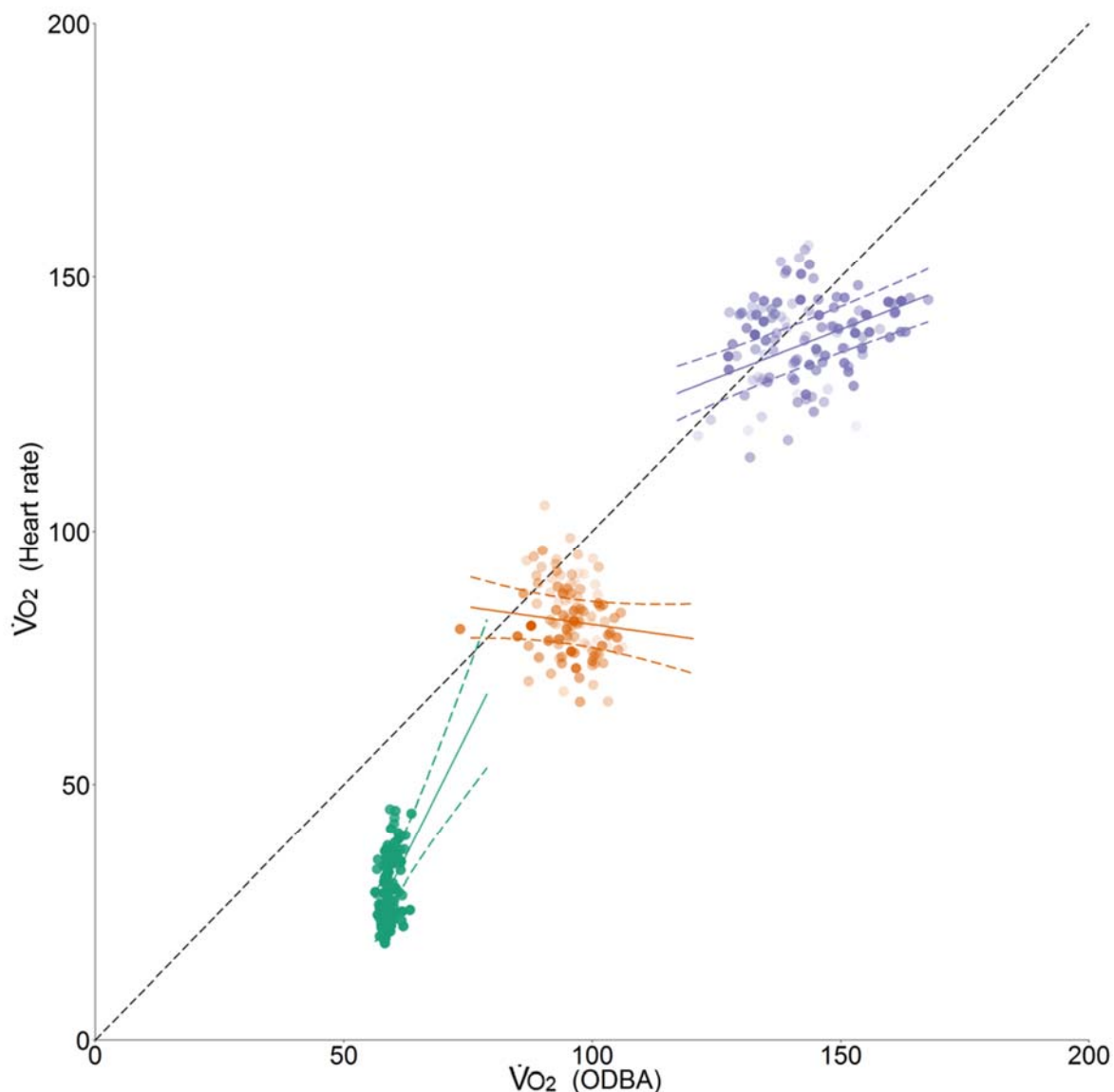


Fig. S2. The relationship between the two methods for predicting $\dot{V}O_2$ (ml min^{-1}) across different behavioural states at daily resolution. The dotted line represents equality between the two methods. Behaviour specific regression relationships (solid line) and 95% confidence intervals (dashed lines) for each behaviour (resting in green, diving in orange and flying in purple) are shown. Points vary in transparency according to the duration of time represented by each behavioural bout. R^2 for the best-supported model = 0.97.

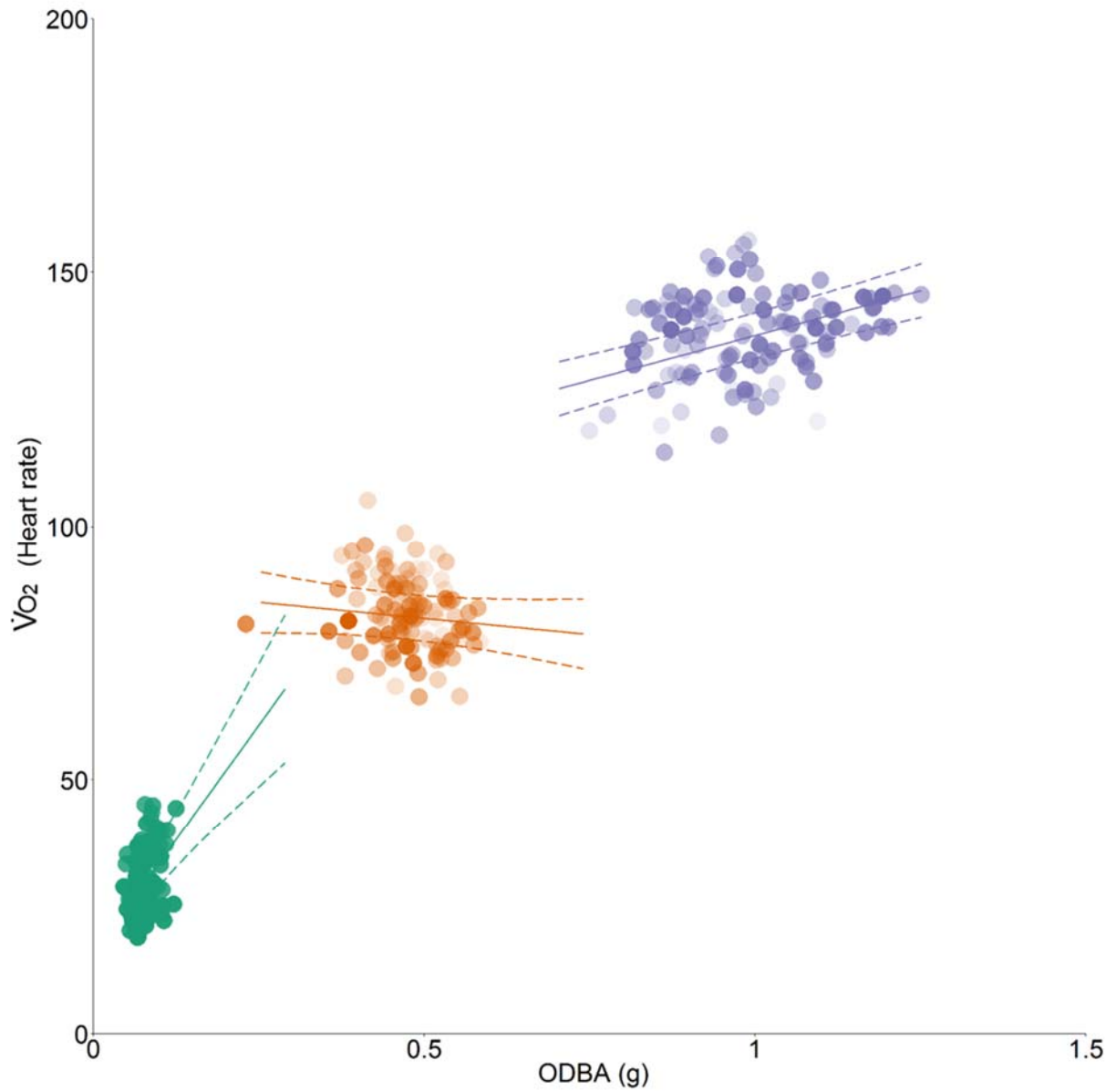


Fig. S3. The relationship between ODBA and $\dot{V}O_2$ (ml min⁻¹) across different behavioural states at daily resolution. (Resting in green, diving in orange and flying in purple). Points vary in transparency according to the duration of time represented by each behavioural bout.

Table S1. Predictive equations for Fig S3. for estimating $\dot{V}O_2$ from ODBA at daily resolution from LMMs along with R squared values for behaviour specific models.

Parameters		Predictions	R squared %
Resting $\dot{V}O_2$	=	(180.54*resting ODBA) + 15.698	14.6
Diving $\dot{V}O_2$	=	(-12.72*diving ODBA) + 88.180	4.0
Flying $\dot{V}O_2$	=	(35.17*flying ODBA) + 102.357	23.3

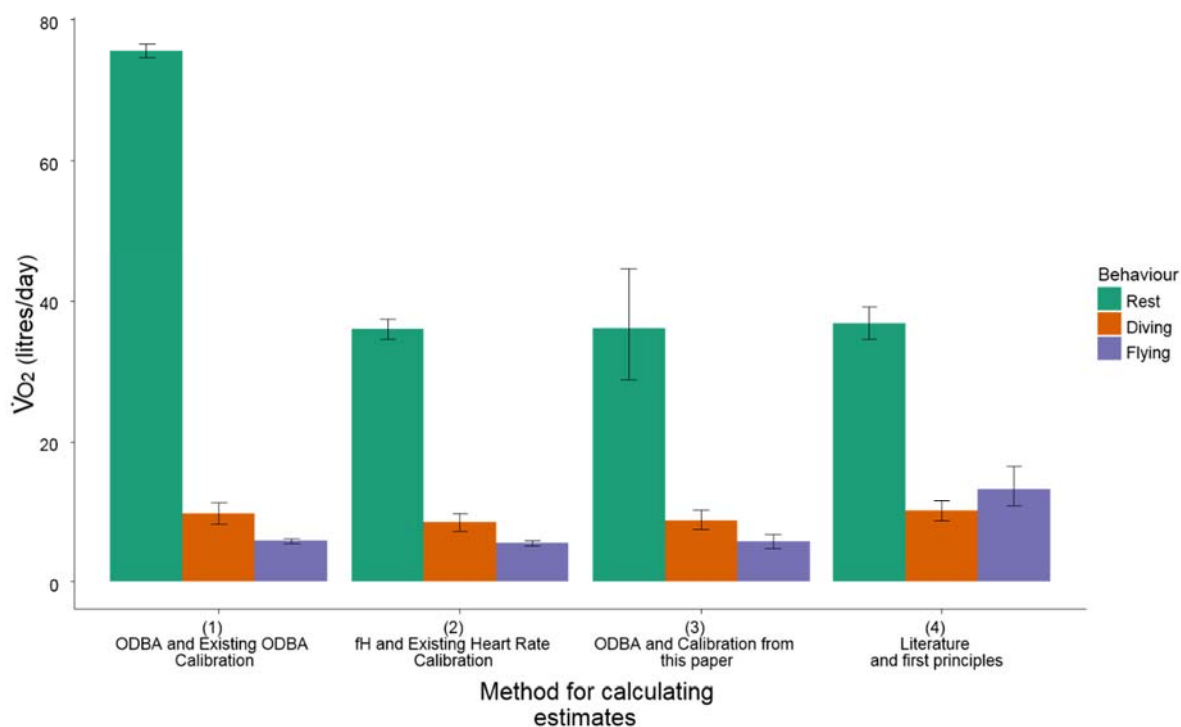


Fig. S4. Estimated total $\dot{V}O_2$ (l/day) for three key behaviours in European shags calculated using four different calibration approaches. Bars represent total daily oxygen consumption for each behaviour estimated by different methods. **(1)** ODBA values from the current study were converted to $\dot{V}O_2$ values using the calibration in Wilson et al (2006), error bars represent standard errors of the mean. **(2)** *fH* values from the current study were converted to $\dot{V}O_2$ using the calibration outlined in White et al., (2011), error bars represent standard errors of the mean. **(3)** ODBA values from the current study were converted to $\dot{V}O_2$ values using the calibration outlined in this paper; error bars represent 95% confidence intervals. **(4)** Values for rates of energy expenditure for rest and diving were taken from Enstipp et al., (2006b) rate of energy expenditure during flight was calculated using $\dot{V}O_2$ max calculation from (Bishop, 1997) based on heart mass, these were multiplied by mean daily duration of each behaviour from this study. Error bars are standard deviations.

References

- Bishop, C. M.** (1997). Heart mass and the maximum cardiac output of birds and mammals: implications for estimating the maximum aerobic power input of flying animals. *Philos. Trans. R. Soc. B Biol. Sci.* **352**, 447–456.
- Enstipp, M. R., Daunt, F., Wanless, S., Humphreys, E., Hamer, K. C., Benvenuti, S. and Grémillet, D.** (2006). Foraging Energetics of North Sea Birds Confronted With Fluctuating Prey Availability. In *Top Predators in Marine Ecosystems Their Role in Monitoring and Management* (ed. Boyd, I.), Wanless, S.), and Camphuysen, C. J.), pp. 191–210. Cambridge University Press.
- White, C. R., Grémillet, D., Green, J. A., Martin, G. R. and Butler, P. J.** (2011). Metabolic rate throughout the annual cycle reveals the demands of an Arctic existence in Great Cormorants. *Ecology* **92**, 475–486.