

# Assessing sampling of the fossil record in a geographically and stratigraphically constrained dataset: the Chalk Group of Hampshire, southern UK



Fiona M. Walker<sup>1\*</sup>, Alexander M. Dunhill<sup>2</sup>, Mark A. Woods<sup>3</sup>, Andrew J. Newell<sup>4</sup> & Michael J. Benton<sup>1</sup>

<sup>1</sup> School of Earth Sciences, University of Bristol, Life Sciences Building, 24 Tyndall Avenue, Bristol BS8 1TQ, UK

<sup>2</sup> School of Earth and Environment, University of Leeds, Maths/Environment Building, Leeds LS2 9JT, UK

<sup>3</sup> British Geological Survey, Environmental Science Centre, Nicker Hill, Keyworth, Nottingham NG12 5GG, UK

<sup>4</sup> British Geological Survey, Maclean Building, Crowmarsh Gifford, Wallingford OX10 8BB, UK

\* Correspondence: [fiona.walker@bristol.ac.uk](mailto:fiona.walker@bristol.ac.uk)

**Abstract:** Taphonomic, geological and sampling processes have been cited as biasing richness measurements in the fossil record, and sampling proxies have been widely used to assess this. However, the link between sampling and taxonomic richness is poorly understood, and there has been much debate on the equivalence and relevance of proxies. We approach this question by combining both historical and novel data: a historical fossil occurrence dataset with uniquely high spatial resolution from the Upper Cretaceous Chalk Group of Hampshire, UK, and a newly compiled 3D geological model that maps subsurface extent. The geological model provides rock volumes, and these are compared with exposure and outcrop area, sampling proxies that have often been conflated in previous studies. The extent to which exposure area (true rock availability) has changed over research time is also tested. We find a trend of low Cenomanian to high Turonian to Campanian raw richness, which correlates with, and is possibly driven by, the number of specimens found. After sampling standardization, an unexpected mid-Turonian peak diversity is recovered, and sampling-standardized genus richness is best predicted by rock volume, suggesting a species–area (or ‘genus–area’) effect. Additionally, total exposure area has changed over time, but relative exposure remains the same.

**Supplementary materials:** A locality list, abundance matrix and all correlation and modelling results are available at <https://doi.org/10.6084/m9.figshare.c.3592208>.

Received 26 July 2016; revised 25 September 2016; accepted 5 October 2016

Evolutionary trends can be investigated by comparing counts of numbers of species or genera (taxonomic richness) in successive time bins. However, there are many analytical and sampling issues to be considered before interpreting changes in diversity curves as evolutionary events (Smith & McGowan 2011). Some of these problems, such as the ‘pull of the Recent’ (Raup 1979), may be corrected for by excluding Recent taxon records (Jablonski *et al.* 2003), or by using within-bin sampled occurrences rather than range-through data. However, variations in the sampling intensity of different time periods may influence apparent diversity patterns (Raup 1972; Smith & McGowan 2011). Sampling bias affecting fossil occurrence data can be split into four separate but interlinked categories: (1) facies heterogeneity (Holland 1995; Smith *et al.* 2001; Smith & Benson 2013); (2) rock volume, differential deposition, preservation and survival of sediments through time (Holland 1995; Peters & Foote 2001; Smith & McGowan 2007; Smith & Benson 2013); (3) rock exposure area and accessibility (Dunhill 2011, 2012); (4) palaeontological sampling effort (the ‘bonanza’ effect of Raup 1977; Dunhill *et al.* 2012, 2013, 2014b).

A correlation is often found between taxonomic richness and various sampling proxies (Sheehan 1971; Raup 1972; Smith 2001; Smith & McGowan 2005; Lloyd *et al.* 2011). Three explanations have been suggested for this: (1) the four sampling biases previously listed are strongly distorting our estimates of past diversity, or the ‘bias’ model (Smith 2007; Benson & Mannion 2012; Lloyd 2012); (2) there is a third, unaccounted-for factor that is driving both the proxies used and palaeodiversity, or the ‘common cause’ model (Sepkoski 1976; Peters & Foote 2002; Peters 2005; Hannisdal & Peters 2011; Peters & Heim 2011); (3) some proxies are partially

redundant with the fossil record (Benton *et al.* 2011; Dunhill *et al.* 2014a; Benton 2015). These three hypotheses have been discussed in detail elsewhere (Benton *et al.* 2011; Smith & McGowan 2011). Researchers have generally used subsampling (shareholder quorum subsampling (SQS) of Alroy 2010a; Benson *et al.* 2016) or sampling proxy modelling (Smith & McGowan 2007; Benson & Mannion 2012; Lloyd 2012; Benson *et al.* 2016) to obtain ‘sampling-corrected’ relative diversity, although there has been some criticism of the use of both of these methods (Brocklehurst 2015; Hannisdal *et al.* 2016). In particular, the sampling proxy modelling approach, as it has previously been applied by Smith & McGowan (2007) and Lloyd (2012), is now rejected based on statistical errors in its formulation and implementation (Sakamoto *et al.* 2016).

Other parts of the sampling discussion have focused on the fidelity and equivalence of the sampling proxies on which these hypotheses have been based (e.g. Benton *et al.* 2011; Benson & Upchurch 2013). This is especially important for sampling proxy modelling, when sampling proxies themselves are used as driving variables in models produced with the aim of correcting for sampling bias. It has been found that outcrop area, a proxy that has previously been used to approximate exposure area and rock volume (and hence the opportunity for palaeontologists to sample fossils) is a poor proxy, largely because it does not always correspond to exposure area, the more direct measure of rock availability (Dunhill 2011, 2012; Dunhill *et al.* 2012, 2013). Here, we pick up this baton, comparing outcrop and exposure area and rock volumes with taxonomic richness in a regional case study.

There are advantages and disadvantages in using both global- and local-scale studies to address questions of sampling, redundancy and

**Table 1.** Lithological description of each formation, taken from BGS Lexicon of Named Rock Units (<http://www.bgs.ac.uk/lexicon/>)

Formation	Age	Description	Thickness (m)*
Portsdown Chalk Formation (PCF)	Campanian	Composed of white chalk with marl seams (particularly in the lower part) and flint bands, although less flinty than the Culver Chalk Formation. The lowest part (up to and including the Farlington Marls at the base of the <i>mucronata</i> Zone) contains several belts rich in inoceramid shell debris, as well as isolated marl seams and pairs of marl seams that likewise contain much inoceramid shell debris. The highest part is essentially marl free and was termed the Studland Chalk 'Member' by Gale <i>et al.</i> 1987	25
Culver Chalk Formation (CCF)	Campanian	Soft white chalk, relatively marl free with flint seams. Flints are generally large and in the upper part tabular	49
Newhaven Chalk Formation (NCF)	Santonian to Campanian	Composed of soft to medium hard, smooth white chalks with numerous marl seams and flint bands, including abundant <i>Zoophycos</i> flints (notably at levels near the base). The formation is known to contain distinct phosphatic chalks of limited lateral extent. Equivalent beds, the Margate Chalk of north Kent, are marl free and contain little flint	25
Seaford Chalk Formation (SCF)	Coniacian to Santonian	Firm white chalk with conspicuous semi-continuous nodular and tabular flint seams. Hardgrounds and thin marls known from the lowest beds	31
Lewes Nodular Chalk Formation (LNCF)	Turonian to Coniacian	Composed of hard to very hard nodular chalks and hardgrounds (which resist scratching by fingernail) with interbedded soft to medium hard chalks (some grainy) and marls; some griotte chalks. The softer chalks become more abundant towards the top. Nodular chalks are typically lumpy and iron-stained (usually marking sponges). Brash is rough and flaggy or rubbly, and tends to be dirty. First regular seams of nodular flint, some large, commence near the base and continue throughout	49
New Pit Chalk Formation (NPCF)	Turonian	Principally blocky, white firm to moderately hard chalk with numerous marls or paired marl seams. Flint occurs sporadically in the upper part in the deeper basin areas of the Southern Province. In some localities flint, in seams, occurs to the base of the formation most notably over structural highs, towards the margins of the outcrop and within the Transitional Province	65
Holywell Nodular Chalk Formation (HNCF)	Cenomanian to Turonian	Generally hard nodular chalks with thin flaser marls and significant proportions of shell debris in part. Base marked by the interbedded coloured marl and chalk succession characteristic of the Plenus Marls Member (a term applicable in both the Southern and Northern Provinces). The Melbourn Rock Member above the base can be distinguished by its lack of shell material	53
Zig Zag Chalk Formation (ZZCF)	Cenomanian	Mostly firm, pale grey to off-white blocky chalk with a lower part characterized by rhythmic alternations of marls and marly chalks with firm white chalk. Thin gritty, silty chalk beds act as markers in the sequence	59
West Melbury Marly Chalk Formation (WMMCF)	Cenomanian	Buff, grey and off-white, soft, marly chalk and hard grey limestone arranged in couplets	18

\*Formation thicknesses are approximate and averaged over the study area.

common cause. Primarily, global diversity is of interest from a macroevolutionary perspective when studying the whole Earth system (Badgley 2003). However, such studies may confound data from regions with strata of different ages and exposure, different levels of facies heterogeneity, different traditions in publication and perhaps comprising rock units that are hard to date and correlate. Because of the complexity of these many biasing factors, it is highly unlikely that there is one 'global' sampling signal (Benson *et al.* 2013, 2016). Regional-scale studies (e.g. Crampton *et al.* 2003; Dunhill *et al.* 2014b; Pereira *et al.* 2015) may provide a partial solution by restricting the number and complexity of the variables (McGowan & Smith 2008). A regional study may be considered a microcosm for studying the macrocosm of global diversity. Additionally, sampling needs to be understood at a local scale before it can be scaled up.

In the UK, the extensive field mapping and borehole investigation by the British Geological Survey (BGS) means that stratigraphic data have been well constrained and digitized. For the Chalk Group, these data have been used to construct a 3D geological model for the south of the UK (Woods *et al.* 2016). We harness this model to provide an estimate of rock volumes. Furthermore, the BGS hosts large, well-documented collections of fossils, including those found in the course of the field mapping carried out since the inception of the survey in 1835, part of which we use for this study.

Here, we choose the Chalk Group of the southern UK as a case study to explore the covariation between the rock and fossil records, and the fidelity of various sampling proxies. Previous studies have shown that facies heterogeneity is a strong control on diversity

(Crampton *et al.* 2003; Rook *et al.* 2013). For example, terrestrial ecosystems are much more diverse than marine ecosystems, and have perhaps been so since the Late Cretaceous (modern data: May 1994; Benton 2009; fossil data: Vermeij & Grosberg 2010); if the rock record is skewed towards the preservation of terrestrial environments in any given time period for which this is true, diversity will appear to increase into this time bin, and vice versa. Ecological facies can be represented by lithofacies in the rock record and, at the formation scale, the Chalk Group has a relatively uniform lithology. The facies represented in the formations of the Chalk Group, deposited on a pelagic carbonate shelf with low sedimentation rate, are more similar to each other than the facies heterogeneity in most diversity studies we are aware of. This means that variations in depositional and ecological facies and preservation (although they do exist, and should be considered; see Table 1) are minimized, relative to other diversity studies conducted on larger temporal and geographical scales (e.g. Lloyd & Friedman 2013; Benson *et al.* 2016).

Our dataset uses specimens collected by a single geologist and therefore minimizes bias introduced from multi-collector databases such as studies that rely on museum collections or large synoptic fossil compilations (e.g. the Paleobiology Database, Alroy *et al.* 2001, <http://paleobiodb.org>). Many museum specimens are collected for the purpose of taxonomic or morphological description, so often only the best specimens from good outcrops are recorded. Ultimately, this bias in large fossil databases may be solved by the entry of more data in the future, and more methodological, even dogged, field sampling from the outset. However, because this is not the case at present, despite

painstaking efforts from the palaeontological community, geological survey data most readily provide thoroughly sampled datasets.

The use of an extensive collection made through a single facies, by a single collector, and over a relatively short sampling time span ought to remove some of the biases of facies heterogeneity and palaeontological sampling effort, leaving only rock volume and rock accessibility biases to be considered.

## Geological background

Great thicknesses of chalk were deposited during the Late Cretaceous, in water depths of 100–500 m, when sea levels were higher than at any point in the Phanerozoic (Mortimore *et al.* 2001) and tropical sea surface temperatures were up to 7°C warmer than they are today (Norris *et al.* 2002). Chalk deposition dominated the Cenomanian to Maastrichtian (100.5–66.0 Ma) through much of Northern Europe and similar chalk deposits are found in North America and Australia.

In the UK, Upper Cretaceous chalk sediments comprise the Chalk Group, which can be split into Southern ('Tethyan'), Northern ('Boreal') and Transitional provinces based on faunal content (Hopson 2005). Hampshire sits entirely within the deposits of the Southern Province, and like other parts of the UK Chalk Group, shows a change from more clay-rich chalks in the Cenomanian to purer chalks in the higher part of the succession. Component formations of the recently established stratigraphic framework for the Chalk in the UK (Hopson 2005; also see Fig. 1) can be recognized on the basis of marker beds and sedimentary texture. The Chalk of Hampshire is a well-established regional succession, with formalized stratigraphical units (Hopson 2005; Fig. 1) recognized by recent BGS mapping that extend into adjacent areas of the Southern Province.

To begin with, some nomenclature: hereafter, 'chalk' in lower case refers to the lithology, and 'the Chalk Group' refers to the formal Southern Province Upper Cretaceous Chalk Group of the UK, as defined by Hopson (2005). The UK Southern Province Chalk Group can be subdivided into two subgroups and nine formations; text abbreviations and definitions for these are given in Table 1. We are considering all of the stratigraphical subdivisions of the Southern Province Chalk Group, and measuring richness and sampling in each of the constituent formations of the group. As well as the very fine-grained, high-purity coccolithic limestone that is characteristic of the Chalk Group, the succession also includes minor clay-rich units (marls) of both detrital and volcanic origin (Wray 1999; Wray & Jeans 2014), admixtures of chalk and clay (marly chalk) and flint-rich beds. The Chalk Group can be soft or lithified as a nodular chalk or hardground, and hardgrounds are distributed throughout the formations in the Chalk Group. Although previous studies have found evidence that more lithified beds contain less fossil diversity (Hendy 2009; Sessa *et al.* 2009), the lithified hardgrounds of the Chalk Group are both condensed and preserve originally aragonitic organisms better than the non-hardground beds in the Chalk (Mortimore *et al.* 2001, p. 23). Although single formations are characterized by the dominance of particular combinations of lithological features, the range of intraformational lithological variability is similar to that which occurs between formations. A lithological description of each formation is given in Table 1, and more detailed stratigraphical information with qualitative descriptions of the fauna of each formation has been given by Woods (2015, fig. 2).

In general, periodic patterns in the diversity of marine organisms have been linked with periodicity observed in sea-level curves (Melott & Bambach 2014). The Cretaceous Period corresponds to a single large-scale sea-level cycle, from lowstand to highstand (de Graciansky *et al.* 1998; Smith & Benson 2013), with maximum transgression attained in the early Turonian (e.g. Haq *et al.* 1987). The Chalk Group succession in the UK includes the thickest and

most complete section spanning the Cenomanian–Turonian boundary in the Anglo-Paris Basin (Gale *et al.* 2000), corresponding to one of the largest positive  $\delta^{13}\text{C}$  excursions in the geological record of the Mesozoic (Jarvis *et al.* 2006), and indicating high levels of organic carbon burial and widespread anoxia. This has previously been identified as a mass extinction, during which 26% of genera died out (Sepkoski 1989; Harries & Little 1999).

The Late Cretaceous was clearly a time of major environmental perturbation in the marine system and this is likely to have affected diversity. The lower part of the Chalk Group contains high concentrations of shelly macrofossils at the base of fining-upwards cycles, which have been labelled 'pulse faunas' (Jeans 1968). It is unclear whether these pulse faunas represent range expansions or preferential depositional conditions, although evidence suggests the former as a result of either influxes of cold water or rises in sea level (see discussion by Mitchell & Carr 1998). Ammonites form the basis of biozonal schemes in the Grey Chalk Subgroup (= Lower Chalk of traditional usage; Hopson 2005; Fig. 1), but rarity of originally aragonite-shelled organisms above the Cenomanian limits their use at stratigraphically higher levels in UK successions. Consequently, abundance patterns of a range of other macrofossil groups, including brachiopods, echinoderms and bivalves, are used in the UK to define biozones in the White Chalk Subgroup (= Middle and Upper Chalk of traditional usage; Hopson 2005; Fig. 1).

It is important to note that there is an overprint of taphonomic sampling bias in the Upper Cretaceous succession, as a result of the poor preservation of aragonitic organisms, a reduced number of facies preserved in the sedimentary record, and erosion during marine transgressions. Some workers (e.g. Gale *et al.* 2000; Smith *et al.* 2001) identify the widely recognized fall in diversity at the Cenomanian–Turonian boundary as more of an artefact than a real extinction, caused by faunal replacement within the facies preserved and a change in the ratio of shallow and deep marine sediments resulting from sea-level change. Smith & Benson (2013) argued that during the Late Cretaceous (1) facies shifts and (2) subsequent erosion of sediments drove artefactual changes in fossil record diversity by restricting the variety of lithofacies captured by the rock record and removing sediments respectively. Therefore, it is possible that dramatic changes in diversity in the Late Cretaceous were a result of preservational biases, and it may be difficult to tease apart these biases from common cause effects.

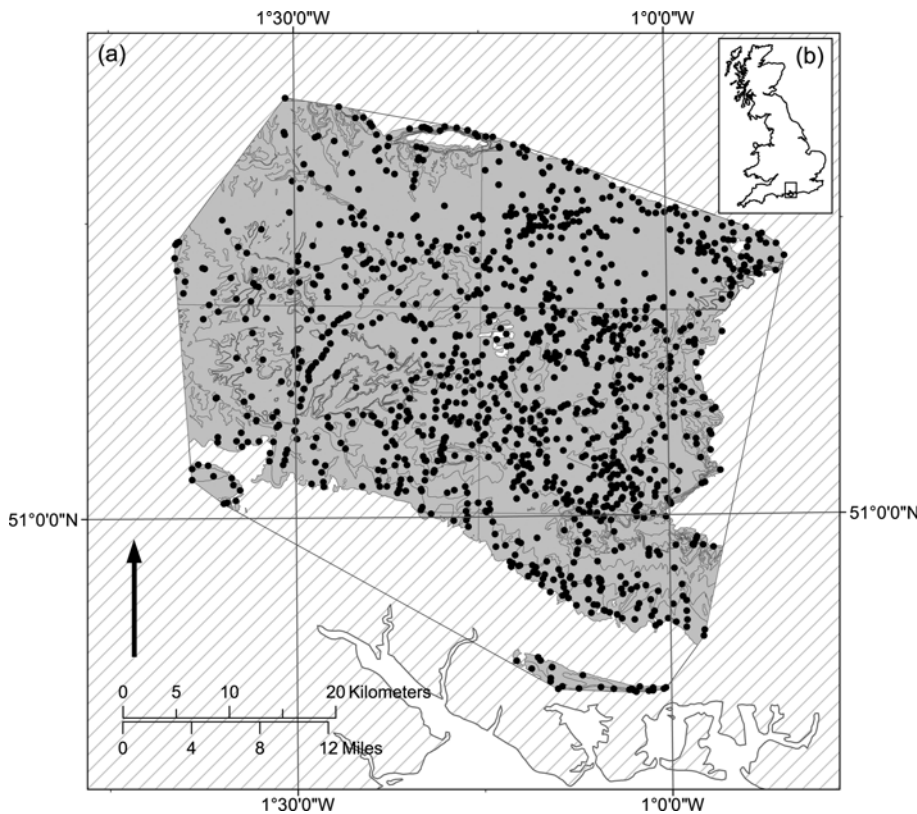
## Materials and methods

### Fossil dataset

Palaeontological datasets for the measurement of taxonomic richness have been collected over the past 200 years. Collections are made for a number of reasons: single, well-preserved specimens may be collected by both amateur collectors and professional palaeontologists as exemplars of a particular taxon, or a large amount of material may be collected to investigate the facies and biostratigraphy of a locality or area. For diversity studies, the latter collection method is desirable, as it is more thorough and should capture more of the rare taxa. Many richness studies make use of historically collected data, rather than new field data; a large amount of the literature makes use of the numerous collections that have been entered into the Paleobiology Database (PaleoDB).

For this study, a dataset of invertebrate macrofossil occurrences from the Chalk Group of Hampshire is used, based on the work of one collector, chalk researcher Reginald Marr Brydone (1873–1943). The collection (Brydone Collection herein) results from Brydone's dedicated work to produce a map of chalk biozones (Brydone 1912). It consists of 18 358 specimens from 1198 localities, of which 77% have been assigned to valid genera, and is largely held by the BGS at Keyworth, with some parts at the Natural





**Fig. 1.** Study area in Hampshire, UK. (a) Distribution of localities across the study area. Each point represents a locality sampled by Brydone. The shaded grey areas mark the outcrops of the Chalk Group in the study area. (b) Location of the study area within Great Britain.

History Museum, London and the Sedgwick Museum, Cambridge. Brydone collected from this area over six field seasons in Hampshire, visiting every ‘Old Chalk Pit’ and ‘Chalk Pit’ marked on the Ordnance Survey (OS) maps of the time (Brydone 1912, p. 3). He collected both surface fossils and smaller macrofossils from bulk sediment sampling. In areas where chalk pits were rare, Brydone ‘traversed enough of the roads to know the apparent scarcity of exposures [was] very genuine’ (Brydone 1912, p. 3). Lang (1944, p. lxvi) noted in his obituary, ‘The mere distance walked must have been quite an achievement’. The vast Brydone Collection includes many unassignable specimens (23%), and some incomplete and damaged specimens, evidence that Brydone recorded even the worst-quality finds, so minimizing the risk of excessive bias from a focus on excellent specimens. Furthermore, Brydone was collecting to produce a biozone map of the Chalk in this area; this led him to employ a thorough and consistent collecting method, with a requirement to achieve a spatially uniform coverage of the area, rather than collecting large concentrations of fossils from particular exposures, as perhaps may be the case for compilations of well-preserved museum-held specimens, the ‘bonanza effect’ of Raup (1977).

All specimens in this dataset were collected for a single publication (Brydone 1912), whereas museum collections from classic areas in Europe have often been built up over at least the past two centuries, often combining chance finds by many different collectors, who may have been motivated to collect for many different reasons. Therefore, this local-scale study contributes novel data to the quality of the fossil record debate, by eliminating any inconsistencies between the collecting habits and effort of different palaeontologists operating at different times, and perhaps with variable methods and variable rock exposure.

On the basis of Brydone’s wider published research, and details of his other collections of Chalk macrofossils in the BGS archives, we can be as confident as it is possible to be about the uniformity of the collection. In other words, Brydone collected specimens from a wide range of taxa. In fact, there is a strong argument for suggesting that it is possibly more representative than other collections from the Chalk

precisely because Brydone was aware that as well as the conspicuous macrofossils, there is also a fauna of ‘mesofossils’ (material small enough to require a hand lens for observation, but not microscopic), which many historical collectors ignored. Additionally, Brydone’s collections have been used by others for palaeontological investigation; his excellent collection of belemnites from Norfolk, UK, was used by Christensen (1991) for taxonomic study.

Although Brydone published extensively on Bryozoa, he also published widely on biostratigraphy and the broad range of fossils required to recognize the standard macrofossil subdivisions in the Chalk. Indeed, echinoids described by Brydone form part of the current standard macrofossil biozonation of the Chalk. Some of this literature was self-published or in obscure journals published by regional natural history societies, and is therefore not widely visible to outside researchers. This extensive catalogue of work illustrates Brydone’s broader research interests in stratigraphy, describing the occurrence, distribution and morphological variability of a broad range of macrofossils, but particularly including data on the distribution of brachiopods, bivalves, crinoids, echinoids and belemnites.

Another important point that should be emphasized is that given the size of the project area for his 1912 work (i.e. the whole of Hampshire), it would have been a practical necessity for Brydone to have a well-distributed network of comprehensively sampled sites; he simply could not have achieved this result by focusing on only part of the available faunal evidence. Brydone’s work overlapped with that of Arthur Rowe (1858–1926), a towering figure in Chalk biostratigraphy who profoundly shaped the way that the biostratigraphy of the Chalk was understood (Gale & Cleavelly 1989). There is likely to have been significant pressure on Brydone to demonstrate that his recognition of biozones across Hampshire was not open to criticism by Rowe (who often criticized the Geological Survey). In this context, it also seems highly unlikely that Brydone would have focused on particular groups that were the basis of his work in East Anglia (e.g. bryozoans, which generally have restricted biostratigraphical value) at the expense of other fossil groups for defining his biozonal units. Material in BGS collections from glacial rafts of

Chalk collected by Brydone at Trimmingham, in East Anglia, for his work on bryozoans includes voluminous non-bryozoan macrofossils. If Brydone had been interested in only bryozoans, why would he have collected all this other material? We think the answer lies in the fact that he was interested in understanding the complete fauna of stratigraphical units and how this could be used for correlation, as evidenced by the considerable number of stratigraphical papers he wrote about the Chalk of Trimmingham.

Overall, the impression from Brydone's collections for Hampshire and East Anglia is that he wanted to comprehensively understand the fauna and correlation of the units he collected from. It can be difficult to disentangle different aspects of sampling bias in empirical studies, but intrinsic features of the Brydone Collection for Hampshire serve to minimize the confounding factors of both facies heterogeneity and temporal and spatial variability of sampling effort. This leaves variation in the survival and outcrop of sediments and fossil preservation as the only potential biases, ignoring any taxonomic effects.

### **Exposure area**

We have quantified exposure area in this study. It has been suggested that exposure area changes through time as a result of erosion and changes in land use (e.g. the loss of quarries as potential sampling sites in the past 150 years; Dunhill *et al.* 2013). All specimens in this dataset were collected around the start of the twentieth century for a publication produced in 1912, so any measure of exposure area needs to approximate exposure as it was at the time of collection. In some cases, exposure area has changed substantially through time; early finds were made in railway cuttings or functioning stone quarries in the mid- to late nineteenth century, and many of these have become overgrown or infilled, allowing collection for only a relatively short length of time (Dunhill *et al.* 2012). The fossils forming the Brydone Collection were collected from railway cuttings, road banks, fields and other transient exposures. In other cases, hand-operated quarries that provided rich fossil trove in Victorian times may have become mechanized and so yield almost nothing now. For this reason, an attempt is made here to quantify changes in exposure area through historical time.

### **Collecting and preparing data**

For this study, the paper records of the Brydone Collection were digitized, including fossil registers, BGS publications and the fossil specimen labels. Material relating to specimens collected by Brydone for a later publication (Brydone 1942) was excluded from the final dataset. The result was a list of localities and the specimens that were found at each locality, all of them exclusively collected for his 1912 paper.

The formations that cropped out at each of the localities of Brydone (1912) (see Fig. 1) were identified. Because modern Chalk Group formations have only recently been formalized (Hopson 2005) and the stratigraphy exposed at each locality on a modern geological map may be different from when Brydone was collecting, Brydone's original biozonal assignments have been used to derive modern formational lithostratigraphy. This is achieved by understanding the relationship between the modern biozonal scheme and the scheme used by Brydone (1912), and the typically simple relationship between modern Chalk Group biostratigraphy and lithostratigraphy (Gale & Cleavelly 1989; Gale & Kennedy 2002; Woods *et al.* 2016). The biozonal concept of Brydone (1912) for each locality was correlated with the modern biozonal equivalents. In some cases, Brydone's biozone designations ranged across modern formation boundaries. In the dataset, all potential formational interpretations were recorded. Where there was uncertainty around assigning a locality to a formation (e.g. if a locality is in the *Tererbratulina lata* Zone, it may be in either the

New Pit Chalk Formation or the Lewes Nodular Chalk Formation), a bootstrapping method was used, with the locality being randomly allocated to one of the possible formations 500 times. This was repeated for all localities, and richness was calculated for each of the 500 runs. The mean richness and error bars were calculated from these trials. This ambiguity affected only 104 of the 1198 localities. Diversity counts, specimen counts, rarefaction and all correlations were carried out in R v.3.2.2 (R Core Team 2015). Outcrop and exposure areas were measured using ArcMap 10.0, BGS DiGMapgb-50 (BGS geological map, 1:50 000), Esri World Imagery (2013), and modern (2014, 1:25 000) and historical (c. 1910–1913, 1:10 560) OS maps, all in ArcMap 10.0.

### *Diversity.*

To produce diversity counts, the 272 taxa listed in the fossil registers were updated by identifying and correcting/removing any misspellings, synonyms, invalid taxa and ichnogenera using Smith & Batten (2002) and PaleoDB. A list of 235 valid genera was produced, with their appearance in Smith & Batten (2002) or PaleoDB recorded. Genus richness counts for each locality and each Chalk Group formation were calculated.

### *Subsampling.*

Two methods of subsampling were used: rarefaction (Sanders 1968; Hulbert 1971) and shareholder quorum subsampling (SQS; Alroy 2010a; R script for SQS version 3.3 obtainable from <http://bio.mq.edu.au/~jalroy/SQS-3-3.R>). SQS is a method that subsamples to an even coverage across samples, rather than to an even number of specimens (as rarefaction does). The coverage of a sample, in this case, is the proportion of specimens in the formation that is represented by a taxon included in the subsample taken. This method treats rare taxa more fairly than rarefaction does (Alroy 2010b). Rarefaction and SQS were carried out to multiple levels in each formation for comparison. For rarefaction, the number of specimens sampled ranged through 20, 30, ..., 80, and for SQS, coverage values of 0.2, 0.3, ..., 0.6 were used. The numbers of specimens varied substantially between the formation-based time bins, from means of 67 to 5956 in our bootstrapped run, meaning that the sample sizes for rarefaction and coverage values for SQS had to be low. However, even with these low sample sizes, the number of specimens sampled from the Zig Zag Chalk Formation was too small for both types of subsampling. Therefore, this formation is excluded from the subsampled time series.

### *Specimen count and maximum specimen count.*

The total number of specimens included in the collection was counted. However, in the fossil registers, occasionally one specimen number was allocated to a group of specimens or specimen fragments, with no information on the field associations of the fossil fragments. Except where fragments could be reassembled, it was often impossible to determine the number of individuals represented. For example, this was especially true for the specimen jars full of crinoid ossicles, which make up part of the collection. Therefore, two specimen counts were made: a minimum specimen count, which counted only the number of original allocated specimen numbers, and a maximum specimen count, where an estimate of the number of fragments was made and each fragment was assumed to represent a different individual. Both measures, the maximum specimen counts (the number of fragments) and the minimum specimen counts (the total number of specimen numbers allocated), were used in the analyses to test whether this uncertainty altered the results.

Both the minimum and the maximum specimen counts produce inexact results; both of the scenarios assessed by these measurements, with either one crinoid ossicle representing one organism or

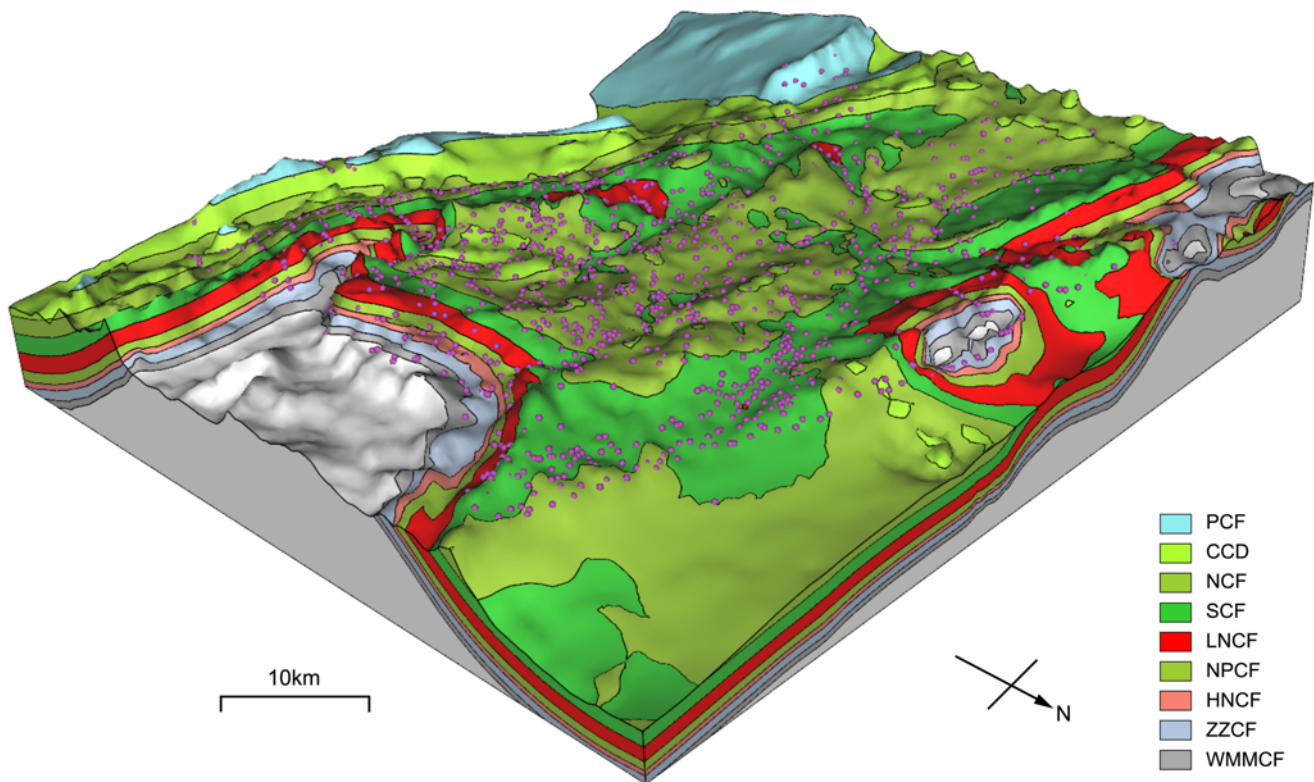


Fig. 2. Brydone's localities plotted on the 3D Chalk model. Full versions for the formation abbreviations are given in Table 1.

a group of catalogued ossicles coming from the same organism, are unlikely. An alternative way of dealing with difficulties in estimating specimen numbers comes from Holland & Patzkowsky (2004), where 1 cm of a bryozoan colony was counted as one individual. However, this would be difficult to implement in a diverse group of taxa as we have here, and there is no obvious way of applying this method to, say, crinoids.

#### Formation thickness.

The thickness ranges of each of the Chalk Group formations in the Hampshire area were obtained from Sheet Explanations for BGS 1:50 000 geological maps (Sheet 299: Booth 2002; Sheet 300: Farrant 2002; Sheet 314: Barton *et al.* 2003; Sheet 316/331: Hopson 2001). To produce average thickness estimates across the whole area, the means of these values were calculated for each formation.

#### Outcrop area.

The outcrop area of each formation in the study area was quantified in ArcMap. The study area boundary was defined as a polygon bounding the outermost localities with a buffer of 50 m, and digitized BGS bedrock maps (DiGMapGB-50, scale 1:50 000) were used to measure the map area covered by each formation in ArcGIS 10. Some of the Chalk outcrop area was undifferentiated even in this most up-to-date map, meaning that it could not be assigned to one formation, and this undifferentiated area could not be divided accurately between formations without any additional information. Therefore, two outcrop area measures were used: for the first, this undifferentiated outcrop area was excluded from the count; for the second, this area was split equally between all possible constituent formations (e.g. outcrop labelled as 'West Melbury Marly Chalk Formation and Zig Zag Chalk Formation (Undifferentiated)' was split equally between the West Melbury Marly Chalk Formation and the Zig Zag Chalk Formation). Undifferentiated strata accounted for just over one-sixth of the Chalk outcrop area, so any future revision of these maps may change this measured outcrop area.

#### Rock volume.

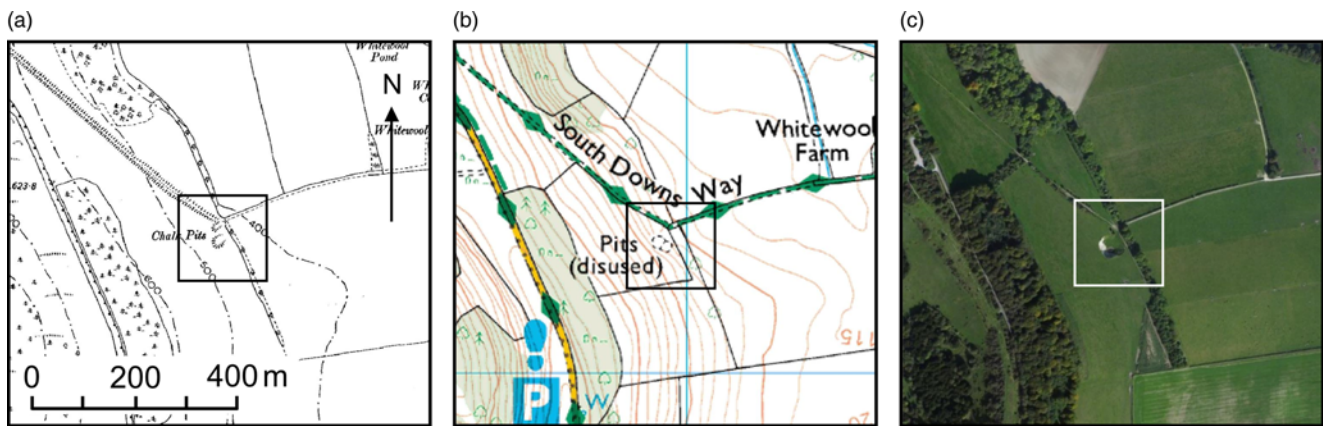
Volumes within the study area for each formation were calculated using the new BGS 3D digital Chalk model of the Chalk (Fig. 2; Woods *et al.* 2016). This model has been constructed in GOCAD-SKUA™ to explore physical property variation in the Chalk. Outcrop, borehole and structural data have been used to construct formational surfaces and interpret physical property variation across the region and the wider southern England area. The 3D framework of formational boundaries, used here for rock volume calculation, functions to explore stratigraphical variation in physical property data within the model, interpolated between boreholes using geostatistical techniques (kriging and variograms).

#### Exposure area.

Rock must be exposed for fossils to be sampled by standard palaeontological field techniques. Thus exposure area may be one factor affecting measured diversity in the fossil record, and yet it has often been confounded with outcrop area (Dunhill 2011, 2012; Dunhill *et al.* 2012). Depending on land use, exposure may be transient and areas may be difficult to measure. This may be a problem with the Chalk Group in particular, as evidenced by 'older literature, when far more chalk pits were available for study' (Wray & Gale 2006). Likewise, Dunhill (2012) found that exposure and outcrop were more or less constant in deserts and semi-arid areas where there is little vegetation cover. However, in populated and more humid zones, much of the outcrop area can be concealed beneath soil and superficial deposits, as well as human developments. In fact, Dunhill (2011) found that older rocks that happen to form mountain belts in the UK are better exposed than younger rocks that occur in lowland agricultural areas with an often extensive cover of superficial deposits.

For this study, exposure area has been measured according to two protocols: (1) to assess exposure area at the time of fossil collection; (2) to assess changes in exposure area through time. Three map-based metrics were used: (1) scanned OS maps published between





**Fig. 3.** An example of the process of exposure area measurement. (a)–(c) show a single exposure as marked on a historical OS map ('Chalk Pits') (a), modern OS map ('Pits') (b) and satellite image (c), in the centre of each image. Satellite image © 1995–2016 Esri.

1910 and 1913 (scale 1:63 360); (2) digitized modern OS maps (2014) (scale 1:25 000); (3) satellite images from the World Imagery map layer produced by Esri (<http://www.arcgis.com/home/item.html?id=10df2279f9684e4a9f6a7f08febac2a9>, downloaded 03 March 2014). These were loaded into ArcMap, georeferenced and overlain with the fossil localities from the Brydone Collection dataset. Where these fossil localities corresponded to an 'exposure feature' on an image (e.g. a pit marked on one of the OS maps or white exposed chalk on the satellite images), a polygon was drawn around the likely exposure extent. The area of each polygon was measured and these areas were summed for each formation and the number of observed exposures counted. Figure 3 shows one locality on each of the three maps (Fig. 3a, historical OS map; Fig. 3b, modern OS map; Fig. 3c, satellite image) for comparison.

Additionally, fieldwork was carried out to find if exposures using maps and satellite images could be observed on the ground. Given the large number of localities (1198) and the size of the study area (see Fig. 1), a sample of localities was visited. Two transects were chosen, which included both managed farmland and urban areas and a range of formations and topography.

### Statistical tests

#### Locality distribution.

We explore the spatial distribution of Brydone's fossil localities (Fig. 1) using a nearest neighbour analysis performed in ArcMap (Average Nearest Neighbor Spatial Statistics Tool), inputting the coordinates for each locality point. Ideally, sampling should be random across the study area; that is, points should not be more clustered than would be expected under a random distribution.

#### Correlations.

Non-parametric Spearman's rho was used to test correlations between variables. Test statistics were calculated to assess the strength of the correlations between the subsets of data. When testing correlations between time series, it is important to consider long-term trend. If similar long-term trends are present, correlations between variables may be falsely interpreted as showing a causal relationship, or as a result of a common cause other than time. To test this, series of variables in this study were regressed against time (using function 'lm' from the R package 'nlme' version 3.1-128). No long-term trends were found, so it was not deemed necessary to calculate generalized (McKinney 1990) differences, a method commonly used to detrend data. All *P* values were corrected for the increased likelihood of Type I error that comes with multiple

comparisons, using a Benjamini–Hochberg correction (Benjamini & Hochberg 1995) using the R function 'p.adjust'.

#### Model selection.

We test uni- and multivariate regression models, evaluating the best models for raw genus diversity and diversity after subsampling (SQS,  $q=0.6$ ). The variables input to the models are as follows: (1) the number of specimens; (2) exposure area as measured from historical maps; (3) formation rock volume as measured from the 3D geological model; (4) a binary vector denoting the presence or absence of air weathering. Regression models were calculated using the R package 'nlme' (v. 3.1–128), and model selection was carried out by calculating the small sample size unbiased Akaike information criterion ( $AIC_C$ ) for each model (R package 'AICcmodavg' v. 2.0-4).  $AIC_C$  chooses the model with the best fit, whilst correcting for model complexity (Johnson & Omland 2004). We also tested the model residuals for normality and heteroscedasticity (R function 'jarque.bera.test' in package 'lmtest' v. 0.9-34, and R function 'bptest' in package 'tseries' v. 0.10-35 respectively). Here, we do not sort individual time series independently (see the criticism of Smith & McGowan 2007 by Sakamoto *et al.* 2016), and we do not use model residuals as relative diversity estimates.

### Results

#### Distribution of fossil localities

Figure 1 is a map of the fossil localities included in this dataset. The nearest neighbour analysis indicates that there is statistically significant clustering in the geographical spread of the data ( $P \ll 0.001$ ,  $z$ -score =  $-16.12$ ). Plotting the localities on a map, it is clear that most of the fossil localities are close to roads and paths. This corresponds to the results of Dunhill *et al.* (2012), who found that fossil localities were often close to public houses and car parks (i.e. points of access close to areas of habitation). Evidently, accessibility (as indicated by roads or paths here) is an important factor for fossil sampling, even for a fossil collector as dedicated to thorough and even coverage as was Brydone. Additionally, exposure is unlikely to be randomly distributed, with factors such as proximity to the coast increasing the likelihood of exposure.

#### Changes in exposure area

##### Total exposure.

Not all of the localities sampled by Brydone were marked as features on maps, or are visible in modern satellite images (Table 2). Approximately 68% of the localities could be linked with features

**Table 2.** The number and proportions of exposures and exposure area recovered using each map exposure area measurement method

Method of exposure measurement	All Brydone Collection Localities			Localities visited in the field		
	Number	% of total	Area (m <sup>2</sup> )	Number	% of total	Area (m <sup>2</sup> )
Total	1198	100*	–	35	100†	–
Historical map	818	68.2	1.37 × 10 <sup>6</sup>	17	48.6	2.59 × 10 <sup>4</sup>
OS map	410	34.2	8.57 × 10 <sup>5</sup>	10	28.6	4.83 × 10 <sup>4</sup>
Satellite images	97	8.1	2.28 × 10 <sup>5</sup>	7	20.0	1.83 × 10 <sup>4</sup>
Fieldwork	–	–	–	8	22.9	2.73 × 10 <sup>3</sup>

\*The number of all localities in the Brydone Collection.

†The number of Brydone collection localities visited in the field for this study

on OS maps dating from 1910 to 1913; these features were largely chalk pits, or road or railway cuttings. Many of the remaining localities were temporary excavations or cuttings, and *c.* 5% of the localities were described as scrapings in fields or paths (‘float’), so were not marked on the historical OS maps. However, on modern OS maps, only *c.* 34% of localities could be linked with currently mapped pits or cuttings, marking a decrease in the number of chalk localities available to sample today. Brydone’s localities were even harder to identify in satellite images, with exposed rock being visible in only *c.* 8% of the study localities. The fieldwork sampled sites were harder to identify using the geographic information system (GIS) methods. Within this subset of data, more exposure features at Brydone’s localities were marked on the historical OS maps (*c.* 49%) than on modern OS maps (*c.* 29%) and satellite images (20%). One more exposure was found during fieldwork than by inspection of satellite images.

*Exposure per formation.*

The relative number of exposures in each formation is similar through sampling time (over the past 100 years), with a reduction in the number of identifiable exposures in the modern OS and satellite image measures (Fig. 4a). A similar pattern is seen in the exposure area measurements (Fig. 4b). Exposure area for all formations is higher when measured on historical OS than on modern OS maps, and measurements from satellite images are again lower. All measures of exposure number and exposure area are strongly correlated, with all but one pairing being correlated with  $P < 0.01$  (Table 3), or  $P > 0.05$  after first differencing.

*Comparing geological sampling proxies*

As explained in the previous section, there was a strong link between all of the exposure measures, with all but one of the correlations having  $P < 0.01$  (Table 3). However, formational rock volumes and thicknesses do not correlate with any of the exposure measurements, except for formation thicknesses with the number of satellite exposures ( $P < 0.05$ ,  $r_s = 0.7670$ , Table 3), and none of these correlations is significant after first differencing. All of the exposure measurements do correlate with outcrop area with  $P < 0.05$  (Table 3). Both measurements of specimen count (maximum and minimum) correlate, as do both outcrop area measurements (including and excluding undifferentiated formations).

*Diversity patterns*

*Raw diversity.*

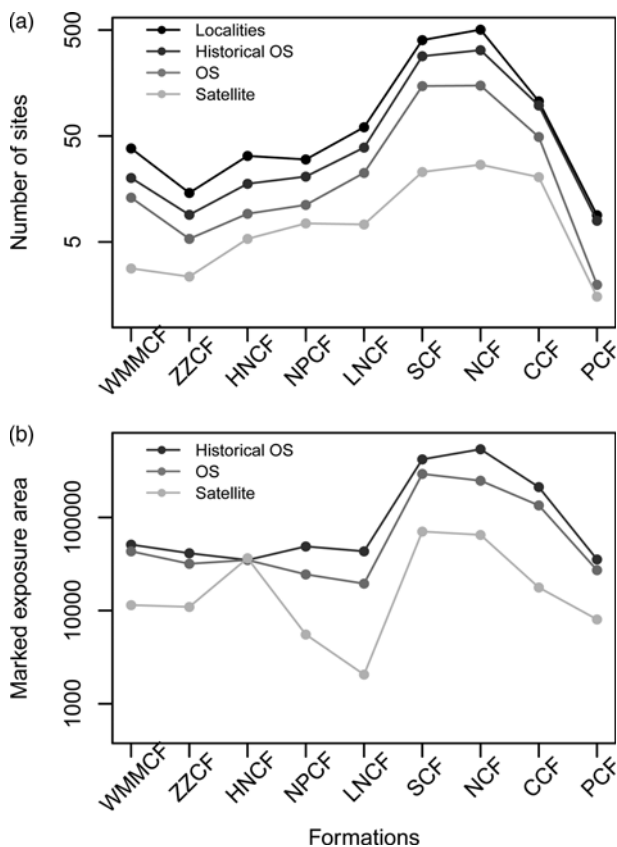
In the raw richness dataset, there is a trend of low Cenomanian (West Melbury Marly Chalk Formation to New Pit Chalk Formation) diversity to high Turonian to Campanian (Lewes Nodular Chalk Formation to Portsdown Chalk Formation) diversity (Fig. 5a). There is most uncertainty about the assignment of localities to formations in the oldest two (West Melbury Marly Chalk Formation, Zig Zag Chalk Formation) and youngest two formations (Culver Chalk Formation, Portsdown Chalk Formation).

*Subsampled diversity.*

After rarefaction (Fig. 5b), richness in all formations, with the exception of the New Pit Chalk Formation, appears similar. This rarefaction ‘flattening out’ of a richness curve is to be expected as sample size decreases (Alroy 2010a). However, SQS produces a similar trend, with New Pit Chalk Formation richness elevated above that of remaining formations (Fig. 5c).

*Diversity and sampling proxies.*

Here, raw diversity correlates only with the number of specimens ( $P < 0.05$ ,  $r_s = 0.8667$ ). Raw diversity is not correlated with any of the measured sampling proxies or with subsampled estimates of diversity (Table 4).



**Fig. 4.** Change in exposure through time. (a) The number of localities or exposures in each formation, as counted on images of different ages. (b) The area of exposures in each formation, as measured on images of different ages. Full versions for the formation abbreviations are given in Table 1.



**Table 3.** Spearman's rank correlation values between different sampling measures

	No. of localities	No. of historical exposures	No. of OS exposures	No. of satellite exposures	Historical exposure area	OS exposure area	Satellite exposure area	Volumes	Thicknesses	Outcrop areas
No. of localities	–	0.99	0.99	0.89	0.99	0.95	0.9	0.2	0.63	0.9
No. of historical exposures	<0.0001†	–	0.997	0.92	0.99	0.97	0.9	0.2	0.68	0.92
No. of OS exposures	<0.0001†	<0.0001†	–	0.92	0.99	0.98	0.9	0.24	0.7	0.94
No. of satellite exposures	0.002†	0.001†	0.001†	–	0.92	0.92	0.78	0.08	0.77	0.81
Historical exposure area	<0.0001†	<0.0001†	<0.0001†	0.001†	–	0.97	0.9	0.17	0.66	0.91
OS exposure area	0.0005†	0.0001†	<0.0001†	0.001†	0.0001†	–	0.91	0.16	0.72	0.94
Satellite exposure area	0.002†	0.002†	0.001†	0.02*	0.002†	0.002†	–	0.17	0.5	0.87
Volumes	0.67	0.67	0.61	0.84	0.7	0.7	0.7	–	0.44	0.43
Thicknesses	0.08	0.06	0.05	0.02*	0.07	0.04	0.21	0.29	–	0.73
Outcrop areas	0.002†	0.001†	0.0005†	0.01*	0.002†	0.0005†	0.004†	0.29	0.04*	–

The numbers above the diagonal are the  $r_s$  values, and the numbers below the diagonal are the  $P$  values.

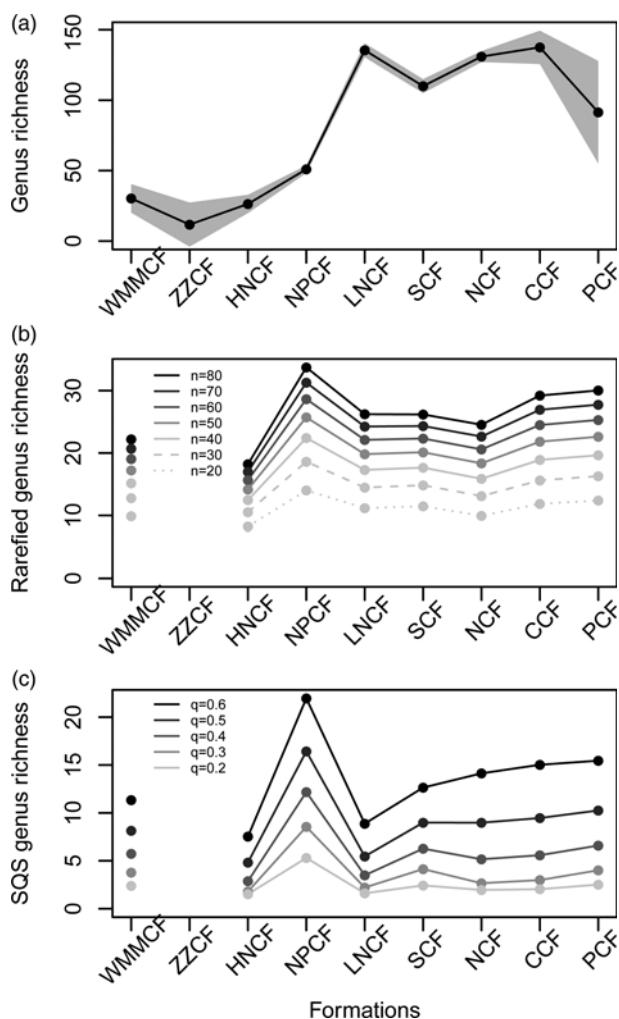
\*Significant at 0.05 level, adjusted for multiple comparisons.

†Significant at 0.01 level, adjusted for multiple comparisons.

**Model selection**

Uni- and multivariate models for genus richness were tested (Table 5). For the raw genus diversity, the number of specimens found in each time bin was the best predictor of genus diversity

( $AIC_C$  weight = 0.52), with the number of specimens and exposure area combined being the second best model ( $AIC_C$  weight = 0.37). For the subsampled (SQS) genus diversity, formation rock volume was the best predictor ( $AIC_C$  = 0.31), with the single-variable models being the best predictors of subsampled richness.



**Fig. 5.** Diversity through time. (a) Raw diversity measurement. The grey areas are the error bars, showing the uncertainty as a result of biozones spanning the boundary of two formations. (b) Mean rarefied diversity, with standardized sample sizes of 20, 30, 40, 50, 60, 70 and 80 specimens. (c) Mean SQS diversity, subsampled to a quorum of 0.2, 0.3, 0.4, 0.5 and 0.6. Full versions for the formation abbreviations are given in Table 1.

**Discussion**

**Changes in exposure area**

There is observational evidence that exposure area (rocks visible at the surface) of the Chalk Group has decreased over time as a result of the loss of chalk pits (e.g. Wray & Gale 2006). We find that the number and total area of exposures, as measured by OS mappers, has certainly decreased. This is problematic for palaeontologists; many

**Table 4.** Spearman's rank correlation values between sampling measures and raw diversity

		$r_s$	$P$
Counts	Specimens	0.87	0.02*
	Max. specimens	0.9	0.007†
	Localities	0.65	0.17
	No. of historical exposures	0.7	0.12
	No. of OS exposures	0.68	0.13
	No. of satellite exposures	0.62	0.22
Measurements	Historical exposures area	0.57	0.29
	OS exposures area	0.18	0.99
	Satellite exposures area	0.05	0.99
	Volumes	-0.13	0.99
	Thicknesses	0.55	0.31
	Outcrop area	0.57	0.29
	Undifferentiated outcrop area	0.55	0.32
Rarefaction	20 specimens	0.33	0.82
	30 specimens	0.33	0.82
	40 specimens	0.33	0.82
	50 specimens	0.33	0.82
	60 specimens	0.33	0.82
	70 specimens	0.33	0.82
	80 specimens	0.38	0.73
	SQS		
	$q = 0.2$	-0.12	0.99
	$q = 0.3$	-0.1	0.99
	$q = 0.4$	-0.12	0.99
	$q = 0.5$	0.19	0.99
	$q = 0.6$	0.21	0.99

\*Significant at 0.05 level, adjusted for multiple comparisons.

†Significant at 0.01 level, adjusted for multiple comparisons.

**Table 5.** Testing the fit of various uni- and multivariate models for predicting raw and subsampled (SQS) richness

Model	Raw genus richness			Subsampled (SQS) genus richness		
	R <sup>2</sup>	AICC	AICC weights	R <sup>2</sup>	AICC	AICC weights
Vol	0.003	106.05	0.001	0.09	56.86	0.31*†
Ex	0.34	102.39	0.007	0.005	57.58	0.22
Sp	0.75	93.68	0.52*†	<0.0001	57.62	0.21
W	0.44	100.91	0.01	0.03	57.35	0.24
Vol + Ex	0.34	109.59	0.0002	0.1	66.09	0.003
Vol + Sp	0.75	100.83	0.01	0.09	66.19	0.003
Vol + W	0.44	108.04	0.0004	0.13	65.81	0.004*
Ex + Sp	0.88	94.37	0.37*	0.03	66.75	0.002
Exp + W	0.58	105.39	0.001	0.03	66.68	0.002
Sp + W	0.82	97.68	0.07	0.04	66.62	0.002
Vol + Ex + Sp	0.89	105.8	0.001	0.13	84.5	<0.0001
Vol + Ex + W	0.58	117.37	<0.0001	0.14	84.44	<0.0001
Vol + Sp + W	0.83	109.58	0.0002	0.14	84.42	<0.0001*
Exp + Sp + W	0.92	102.85	0.005*	0.08	84.94	<0.0001
Vol + Ex + Sp + W	0.92	125.99	<0.0001	0.2	139.84	<0.0001

Vol, formation rock volume; Ex, historical exposure area; Sp, number of specimens; W, presence or absence of air weathering.

\*Best model for each number of variables.

†Best model overall.

studies of richness through time use summed collections to measure this, and these collections have been sampled at different dates over past centuries. However, our ability to sample fossils has changed through history. In this study, for example, it has become harder to find fossil localities since Brydone's time. In other areas, as land use changes, rock may become more or less accessible over time.

However, in this study, we find that the relative exposure of each formation has remained the same since Brydone's collection was made, and all measures of exposure correlate (Table 3). In other words, formations that were well exposed in the past remain the best exposed now. This may be due to land use; although the sample contains both urban and rural managed areas, many of the fossils were collected as loose specimens that had been ploughed up on farmland and this land use has changed little in the past 100 years. Another explanation might be the structure of the geology; on the large scale, all chalk formations in this area are constantly and shallowly dipping to the south. The interplay of this structure and the response of each formation to weathering and surface processes dictate the topography of this landscape (Aldiss *et al.* 2012). Perhaps this relationship dictates exposure, because topography is linked to exposure (Dunhill 2012). The importance of exposure area, in this case, is not diminished as a sampling proxy as a result of changing exposure through sampling time.

We have tested the success of different methods in finding and recovering exposure area. Satellite images are worse at capturing exposure than OS maps. This may result from vegetation obscuring any exposures, and exposures being too small to find in the satellite images. When fieldwork was carried out on a small sample of the localities, it was only slightly easier to find exposure than using satellite images (Table 2). This may also have been as a result of vegetation, with old chalk pits being obscured or filled in.

### Links between sampling proxies

Unlike Dunhill (2011, 2012), we found that measures of exposure do correlate with outcrop area in this region, perhaps because of relative similarity of facies and hence response to erosion and weathering of all included formations. Neither outcrop area nor exposure area correlated with rock volumes or thickness. Not all surviving rock can be sampled, so rock volume measures are further

divorced from the concept of sampling availability than is outcrop or exposure area. This lack of correlation reaffirms the importance of careful sampling proxy choice.

### Taxonomic richness

#### Aragonite sampling bias.

Within the Chalk Group, there is an inherent preservation bias because aragonite is not widely preserved (Mortimore *et al.* 2001; Smith & Batten 2002). The Chalk Group was deposited in a time of 'calcite seas', when the Mg/Ca ratio of seawater was low (Sandberg 1983; Hardie 1996; Stanley & Hardie 1998), which may have a significant impact on the preservation of aragonitic organism diversity (Cherns & Wright 2000, 2009). Originally aragonitic organisms that have been replaced by calcite (e.g. ammonites, nautiloids, some gastropods) are generally well preserved only in the clay-rich Grey Chalk Subgroup (West Melbury Marly Chalk Formation and Zig Zag Chalk Formation). In formations younger than this, evidence of aragonitic organisms is found at condensed horizons (hardgrounds), as moulds on the attachment scars of calcitic organisms, or when these aragonitic organisms had originally calcitic parts; for example, the aptychi of ammonites (Smith & Batten 2002). However, in this study there is a marked increase in diversity between the older (West Melbury Marly Chalk Formation, Zig Zag Chalk Formation, Holywell Nodular Chalk Formation, New Pit Chalk Formation) and younger (Lewes Nodular Chalk Formation, Seaford Chalk Formation, Newhaven Chalk Formation, Culver Chalk Formation, Portsdown Chalk Formation) Chalk Group formations, indicating that this failure to capture originally aragonitic organisms is not the only sampling bias in the Chalk Group. However, it is impossible to estimate what a diversity curve would have looked like without this preservation failure (Cherns & Wright 2009).

#### Richness through time.

The raw richness count shows a trend of low richness in the Cenomanian to Turonian to high richness in the upper Turonian to Campanian. This trend may be related to lithology; the Grey Chalk Subgroup is less likely to air-weather than the White Chalk Subgroup (A. Gale, pers. comm. 2015). It is

more difficult to find small fossils in fresh exposures than in weathered exposures.

However, after subsampling using both rarefaction and SQS, the New Pit Chalk Formation (Turonian) stands out as the highest diversity formation in the study, when compared with the remaining subsampled formations, which all have similar levels of diversity (Fig. 5b and c). This is unexpected; Lewes Nodular Chalk Formation contains hardgrounds, including the Chalk Rock, which are condensed and fossiliferous. For this reason the Lewes Nodular Chalk Formation often appears to contain a greater abundance of macrofossil remains, as indicated by the numerous stratigraphically important fossil ranges illustrated for the Lewes Nodular Chalk Formation compared with the New Pit Chalk Formation (Mortimore 1986). However, here, Lewes Nodular Chalk Formation has the second-lowest genus richness when SQS is calculated with a quorum of 0.6. There are three possible explanations for this: (1) genus richness may not be a good proxy for species richness (Hendricks *et al.* 2014), and the stratigraphically important fossils listed by Mortimore (1986) are identified to species level, whereas this study is to the level of genera; (2) within-formation evenness may affect the results of subsampling (Olzewski 2004) and even SQS (Hannisdal *et al.* 2016); or (3) the fossiliferous hardgrounds of the Lewes Nodular Chalk Formation were less accessible in the past than for modern BGS mappers.

Generally, fossils are unevenly distributed in the geological record as a result of condensed beds and varying preservation potential, and this evidently holds true for a geological unit like the Chalk, with its relatively uniform lithology. The Chalk has evidence of 'pulse faunas', described as 'recurring assemblages, or abnormal abundances of calcitic macrofossils' (Paul *et al.* 1999). These faunas resemble Konzentrat-Lagerstätten, which are rock units with unusually high concentrations of fossils (Seilacher *et al.* 1985). However, pulse faunas are thought to arise as a result of real faunal immigration (Mitchell & Carr 1998) rather than elevated preservation potential, and fossils are also concentrated in condensed hardgrounds, such as the Chalk Rock. At this small scale, diversity changes from bed to bed are likely to be great. During sampling, if fossiliferous beds are not collected from, perhaps because of issues of accessibility or ease of extraction, then any diversity measurements will be unrepresentative.

#### Richness and sampling proxies.

Rock volume has been suggested as a driver of diversity (Crampton *et al.* 2003), and specifically within the UK a reduction in the number of lithofacies and subsequent rock package erosion has been suggested as a driver of diversity (Smith & Benson 2013), either as a common cause or through sampling bias. For raw genus diversity, the number of specimens was the best predictor of richness, and the second-best model was the number of specimens and exposure area combined. For subsampled (SQS) genus diversity, rock volume was the best predictor of sample-standardized richness. Subsampled richness, in theory, is a better indication of the real relative richness in each time bin, compared with raw richness, as sample size biases are reduced. The proxy of rock volume is a function of both sampling bias and original facies area; that is, the original accommodation space for sediment to accumulate. Because rock volume is linked with subsampled richness and not raw richness, it suggests that there may be a species–area (or 'genus–area') effect controlling sampling standardized diversity.

#### Conclusions

Using maps and satellite images to track changes in exposure through time, we find an overall reduction in exposures and exposure area over the past 100 years. However, relative exposure has remained the

same; units that were well exposed in the past are, on the whole, well exposed now, and vice versa. We find that exposure area and outcrop area correlate, but they do not co-vary with rock volumes, suggesting that a volume proxy is more divorced from rock availability than either outcrop area or exposure area. This lack of correlation is very important to consider when choosing sampling proxies for comparison with the fossil record. Overall, raw diversity patterns in the Chalk Group are shaped by the number of specimens, with both the diversity and specimen count datasets showing a general increase through time. However, when sampling is standardized by the number of specimens, unexpectedly, the New Pit Chalk Formation diversity is elevated, and there is a possible link between subsampled richness and original sediment accommodation space. Raw richness in this geological section is probably driven by the number of samples and the existence of highly fossiliferous beds that yield a large proportion of the diversity measured.

#### Acknowledgements and Funding

We thank curators from the BGS, NHM and Sedgwick Museum for their collections assistance, and comments from F. Forcino and A. Gale greatly improved this work. We also thank S. Peters and an anonymous referee for their very thorough and helpful comments on the paper, which substantially improved it. This work was funded by NERC doctoral training grant NE/L501554/1 and a BGS studentship F.M.W. A.M.D. is funded by a Royal Commission for the Exhibition of 1851 Research Fellowship and a Leverhulme Early Career Fellowship. M.A.W. and A.J.N. publish with the permission of the Executive Director of the British Geological Survey (NERC). The National Grid and other Ordnance Survey data are used with the permission of the Controller of Her Majesty's Stationary Office. Ordnance Survey licence number 100017897/2005.

*Scientific editing by Adrian Hartley*

**Correction notice:** Newham *et al.* 2014 and Smith *et al.* 2012 are not cited within the text and have been removed from the reference list.

#### References

- Aldiss, D.T., Farrant, A.R. & Hopson, P.M. 2012. Geological mapping of the Late Cretaceous Chalk Group of southern England: a specialised application of landform interpretation. *Proceedings of the Geologists' Association*, **123**, 728–741, <http://doi.org/10.1016/j.pgeola.2012.06.005>
- Alroy, J. 2010a. Geographical, environmental and intrinsic biotic controls on Phanerozoic marine diversification. *Palaeontology*, **53**, 1211–1235, <http://doi.org/10.1111/j.1475-4983.2010.01011.x>
- Alroy, J. 2010b. The shifting balance of diversity among major marine animal groups. *Science*, **329**, 1191–1194, <http://doi.org/10.1126/science.1189910>
- Alroy, J., Marshall, C.R. *et al.* 2001. Effects of sampling standardization on estimates of marine diversification. *Proceedings of the National Academy of Sciences of the USA*, **98**, 6261–6266.
- Badgley, C. 2003. The multiple scales of biodiversity. *Paleobiology*, **29**, 11–13.
- Barton, C.M., Hopson, P.M., Newell, A.J., Royse, K.R. 2003. *Geology of the Ringwood district: A brief explanation of the 1:50 000 geological map E314. (England and Wales)*. Keyworth, Nottingham: British Geological Survey.
- Benjamini, J. & Hochberg, Y. 1995. Controlling the false discovery rate: a practical and powerful approach to multiple testing. *Journal of the Royal Statistical Society, Series B*, **57**, 289–300.
- Benson, R.B.J. & Mannion, P.D. 2012. Multi-variate models are essential for understanding vertebrate diversification in deep time. *Biology Letters*, **8**, 127–130, <http://doi.org/10.1098/rsbl.2011.0460>
- Benson, R.B.J. & Upchurch, P. 2013. Diversity trends in the establishment of terrestrial vertebrate ecosystems: Interactions between spatial and temporal sampling biases. *Geology*, **41**, 43–46, <http://doi.org/10.1130/G33543.1>
- Benson, R.B.J., Mannion, P.D., Butler, R.J., Upchurch, P., Goswami, A. & Evans, S.E. 2013. Cretaceous tetrapod fossil record sampling and faunal turnover: Implications for biogeography and the rise of modern clades. *Palaeogeography, Palaeoclimatology, Palaeoecology*, **372**, 88–107, <http://doi.org/10.1016/j.palaeo.2012.10.028>
- Benson, R.B.J., Butler, R.J., Alroy, J., Mannion, P.D., Carrano, M.T. & Lloyd, G. T. 2016. Near-stasis in the long-term diversification of Mesozoic tetrapods. *PLoS biology*, **14**, e1002359, <http://doi.org/10.1371/journal.pbio.1002359>
- Benton, M.J. 2009. The Red Queen and the Court Jester: species diversity and the role of biotic and abiotic factors through time. *Science*, **323**, 728–732, <https://doi.org/10.1126/science.1157719>
- Benton, M.J. 2015. Palaeodiversity and formation counts: redundancy or bias? *Palaeontology*, **58**, 1003–1029, <http://doi.org/10.1111/pala.12191>
- Benton, M.J., Dunhill, A.M., Lloyd, G.T. & Marx, F.G. 2011. Assessing the quality of the fossil record: insights from vertebrates. *In: McGowan, A.J. &*



- Smith, A.B. (eds) *Comparing the Geological and Fossil Records: Implications for Biodiversity Studies*. Geological Society, London, Special Publications, **358**, 63–94, <http://doi.org/10.1144/SP358.6>
- Booth, K.A. 2002. *Winchester. Sheet Explanation of the British Geological Survey. 1:50,000, Sheet 299 (England & Wales)*, Keyworth, Nottingham: British Geological Survey.
- Brocklehurst, N. 2015. A simulation-based examination of residual diversity estimates as a method of correcting for sampling bias. *Palaeontologica Electronica*, **18**, 1–15.
- Brydone, R.M. 1912. *Stratigraphy of the Chalk of Hants*. Dulau, London.
- Brydone, R.M. 1942. *Some Zonal Notes on the Chalk of Hants*. Jarrold, Norwich.
- Cherns, L. & Wright, V.P. 2000. Missing molluscs as evidence of large-scale, early skeletal aragonite dissolution in a Silurian sea. *Geology*, **28**, 791–794.
- Cherns, L. & Wright, V.P. 2009. Quantifying the impacts of early diagenetic dissolution on the fossil record. *Palaios*, **24**, 756–771.
- Christensen, W.K. 1991. Belemnites from the Conacian to Lower Campanian chalks of Norfolk and southern England. *Palaeontology*, **34**, 695–749.
- Crampton, J.S., Beu, A.G., Cooper, R.A., Jones, C.M., Marshall, B. & Maxwell, P.A. 2003. Estimating the rock volume bias in paleobiodiversity studies. *Science*, **301**, 358–360, <http://doi.org/10.1126/science.1085075>
- De Graciansky, P.C., Hardenbol, J., Jacquin, T. & Vail, P.R. (eds) 1998. *Mesozoic and Cenozoic Sequence Stratigraphy of European Basins*. SEPM Special Publications, **60**.
- Dunhill, A.M. 2011. Using remote sensing and a geographic information system to quantify rock exposure area in England and Wales: Implications for paleodiversity studies. *Geology*, **39**, 111–114, <http://doi.org/10.1130/G31503.1>
- Dunhill, A.M. 2012. Problems with using rock outcrop area as a paleontological sampling proxy: rock outcrop and exposure area compared with coastal proximity, topography, land use, and lithology. *Paleobiology*, **38**, 126–143, <http://doi.org/10.5061/dryad.b02h0>
- Dunhill, A.M., Benton, M.J., Twitchett, R.J. & Newell, A.J. 2012. Completeness of the fossil record and the validity of sampling proxies at outcrop level. *Palaeontology*, **55**, 1155–1175, <http://doi.org/10.1111/j.1475-4983.2012.01149.x>
- Dunhill, A.M., Benton, M.J., Newell, A.J. & Twitchett, R.J. 2013. Completeness of the fossil record and the validity of sampling proxies: a case study from the Triassic of England and Wales. *Journal of the Geological Society, London*, **170**, 291–300, <http://doi.org/10.1144/jgs2012-025>
- Dunhill, A.M., Benton, M.J., Twitchett, R.J. & Newell, A.J. 2014a. Testing the fossil record: Sampling proxies and sealing in the British Triassic–Jurassic. *Palaeogeography, Palaeoclimatology, Palaeoecology*, **404**, 1–11, <http://doi.org/10.1016/j.palaeo.2014.03.026>
- Dunhill, A.M., Hannisdal, B. & Benton, M.J. 2014b. Disentangling rock record bias and common-cause from redundancy in the British fossil record. *Nature Communications*, **5**, <http://doi.org/10.1038/ncomms5818>
- Farrant, A.R. 2002. *Alresford. Sheet Explanation for the British Geological Survey. 1:50,000, Sheet 300 (England & Wales)*, Keyworth, Nottingham: British Geological Survey.
- Gale, A.S. & Cleveley, R.J. 1989. Arthur Rowe and the zones of the White Chalk of the English coast. *Proceedings of the Geologists' Association*, **100**, 419–431, [http://doi.org/10.1016/S0016-7878\(89\)80018-5](http://doi.org/10.1016/S0016-7878(89)80018-5)
- Gale, A.S. & Kennedy, W.J. 2002. Introduction. In: Smith, A.B. & Batten, D.J. (eds) *Fossils of the Chalk*. Palaeontological Association, London, 1–26.
- Gale, A.S., Wood, C.J. & Bromley, R.G. 1987. The lithostratigraphy and marker bed correlation of the White Chalk (Late Cenomanian–Campanian) in southern England. *Mesozoic Research*, **1**, 107–118.
- Gale, A.S., Smith, A.B., Monks, N.E.A., Young, J.A., Howard, A., Wray, D.S. & Huggett, J.M. 2000. Marine biodiversity through the Late Cenomanian–Early Turonian: palaeoceanographic controls and sequence stratigraphic biases. *Journal of the Geological Society, London*, **157**, 745–757, <http://doi.org/10.1144/jgs.157.4.745>
- Hannisdal, B. & Peters, S.E. 2011. Phanerozoic Earth system evolution and marine biodiversity. *Science*, **334**, 1121–1124, <http://doi.org/10.1126/science.1210695>
- Hannisdal, B., Haaga, K.A., Reitan, T., Diego, D. & Liow, L.H. 2016. Common species link global ecosystems to climate change. *bioRxiv*, <http://doi.org/10.1101/043729>
- Haq, B.U., Hardenbol, J. & Vail, P.R. 1987. Chronology of fluctuating sea levels since the Triassic. *Science*, **235**, 1156–1167.
- Hardie, L.A. 1996. Secular variation in seawater chemistry: An explanation for the coupled secular variation in the mineralogies of marine limestones and potash evaporites over the past 600 m.y. *Geology*, **24**, 279–283.
- Harries, P.J. & Little, C.T. 1999. The early Toarcian (Early Jurassic) and the Cenomanian–Turonian (Late Cretaceous) mass extinctions: similarities and contrasts. *Palaeogeography, Palaeoclimatology, Palaeoecology*, **154**, 39–66, [http://doi.org/10.1016/S0031-0182\(99\)00086-3](http://doi.org/10.1016/S0031-0182(99)00086-3)
- Hendricks, J.R., Saupe, E.E., Myers, C.E., Hermsen, E.J. & Allmon, W.D. 2014. The generification of the fossil record. *Paleobiology*, **40**, 511–528, <http://doi.org/10.1666/13076>
- Hendy, A.J.W. 2009. The influence of lithification on Cenozoic marine biodiversity trends. *Paleobiology*, **35**, 51–62.
- Holland, S.M. 1995. The stratigraphic distribution of fossils. *Paleobiology*, **21**, 92–109.
- Holland, S.M. & Patzkowsky, M.E. 2004. Ecosystem structure and stability: Middle Upper Ordovician of Central Kentucky, USA. *Palaios*, **19**, 316–331.
- Hopson, P.M. 2001. *Fareham and Portsmouth. Sheet Explanation of the British Geological Survey. 1:50,000, Sheet 316/331 (England & Wales)*, Keyworth, Nottingham: British Geological Survey.
- Hopson, P.M. 2005. *A Stratigraphical Framework for the Upper Cretaceous Chalk of England and Scotland with Statements on the Chalk of Northern Ireland and the UK Offshore Sector*. British Geological Survey Research Report, RR/05/001.
- Hulbert, S.H. 1971. The nonconcept of species diversity: a critique and alternative parameters. *Ecology*, **52**, 577–586.
- Jablonski, D., Roy, K., Valentine, J.W., Price, R.M. & Anderson, P.S. 2003. The impact of the pull of the recent on the history of marine diversity. *Science*, **300**, 1133–1135, <http://doi.org/10.1126/science.1083246>
- Jarvis, I., Gale, A.S., Jenkyns, H.C. & Pearce, M.A. 2006. Secular variation in Late Cretaceous carbon isotopes: a new  $\delta^{13}\text{C}$  carbonate reference curve for the Cenomanian–Campanian (99.6–70.6 Ma). *Geological Magazine*, **143**, 561–608, <http://doi.org/10.1017/S0016756806002421>
- Jeans, C. V. 1968. The origin of montmorillonite of European chalk with special reference to the Lower Chalk of England. *Clay Minerals*, **7**, 311–329.
- Johnson, J. & Omland, K. 2004. Model selection in ecology and evolution. *Trends in Ecology & Evolution*, **19**, 101–108, <http://doi.org/10.1016/j.tree.2003.10.013>
- Lang, W.D. 1944. Reginald Marr Brydone [obituary]. *Quarterly Journal of the Geological Society of London*, **100**, lxxv–lxxvi, <http://doi.org/10.1144/GSL.JGS.1944.100.01-04.02>
- Lloyd, G.T. 2012. A refined modelling approach to assess the influence of sampling on palaeobiodiversity curves: new support for declining Cretaceous dinosaur richness. *Biology Letters*, **8**, 123–126, <http://doi.org/10.1098/rsbl.2011.0210>
- Lloyd, G.T. & Friedman, M. 2013. A survey of palaeontological sampling biases in fishes based on the Phanerozoic record of Great Britain. *Palaeogeography, Palaeoclimatology, Palaeoecology*, **372**, 5–17, <http://doi.org/10.1016/j.palaeo.2012.07.023>
- Lloyd, G.T., Smith, A.B. & Young, J.R. 2011. Quantifying the deep-sea rock and fossil record bias using coccolithophores. In: McGowan, A.J. & Smith, A.B. (eds) *Comparing the Geological and Fossil Records: Implications for Biodiversity Studies*. Geological Society, London, Special Publications, **358**, 167–177, <http://doi.org/10.1144/SP358.11>
- May, R.M. 1994. Biological diversity: differences between land and sea. *Philosophical Transactions of the Royal Society of London, Series B*, **343**, 105–111.
- McGowan, A.J. & Smith, A.B. 2008. Are global Phanerozoic marine diversity curves truly global? A study of the relationship between regional rock records and global Phanerozoic marine diversity. *Paleobiology*, **34**, 80–103.
- McKinney, M.L. 1990. Classifying and analysing evolutionary trends. In: McNamara, K.J. (ed.) *Evolutionary Trends*. University of Arizona Press, Tucson, 28–58.
- Melott, A.L. & Bambach, R.K. 2014. Analysis of periodicity of extinction using the 2012 geological time scale. *Paleobiology*, **40**, 177–196.
- Mitchell, S.F. & Carr, I.T. 1998. Foraminiferal response to mid-Cenomanian (Upper Cretaceous) palaeoceanographic events in the Anglo-Paris Basin (Northwest Europe). *Palaeogeography, Palaeoclimatology, Palaeoecology*, **137**, 103–125, [http://doi.org/10.1016/S0031-0182\(97\)00087-4](http://doi.org/10.1016/S0031-0182(97)00087-4)
- Mortimore, R.N. 1986. Stratigraphy of the Upper Cretaceous White Chalk of Sussex. *Proceedings of the Geologists' Association*, **97**, 97–139, [http://doi.org/10.1016/S0016-7878\(86\)80065-7](http://doi.org/10.1016/S0016-7878(86)80065-7)
- Mortimore, R.N., Wood, C.J. & Gallois, R.W. 2001. *British Upper Cretaceous Stratigraphy*. Joint Nature Conservation Committee, Peterborough.
- Norris, R.D., Hole, W. & Bice, K.L. 2002. Jiggling the tropical thermostat in the Cretaceous hothouse. *Geology*, **30**, 299–302.
- Olszewski, T.D. 2004. A unified mathematical framework for the measurement of richness and evenness within and among multiple communities. *OIKOS*, **104**, 377–387, <https://doi.org/10.1111/j.0030-1299.2004.12519.x>
- Paul, C.R., Lamolda, M., Mitchell, S., Vaziri, M., Gorostidi, A. & Marshall, J. 1999. The Cenomanian–Turonian boundary at Eastbourne (Sussex, UK): a proposed European reference section. *Palaeogeography, Palaeoclimatology, Palaeoecology*, **150**, 83–121, [http://doi.org/10.1016/S0031-0182\(99\)00009-7](http://doi.org/10.1016/S0031-0182(99)00009-7)
- Pereira, B.C., Benton, M.J., Ruta, M. & Mateus, O. 2015. Mesozoic echinoid diversity in Portugal: investigating fossil record quality and environmental constraints on a regional scale. *Palaeogeography, Palaeoclimatology, Palaeoecology*, **424**, 132–146, <http://doi.org/10.1016/j.palaeo.2015.02.014>
- Peters, S.E. 2005. Geologic constraints on the macroevolutionary history of marine animals. *Proceedings of the National Academy of Sciences of the USA*, **102**, 12326–12331.
- Peters, S.E. & Foote, M. 2001. Biodiversity in the Phanerozoic: A reinterpretation. *Paleobiology*, **27**, 583–601.
- Peters, S.E. & Foote, M. 2002. Determinants of extinction in the fossil record. *Nature*, **416**, 420–424.
- Peters, S.E. & Heim, N.A. 2011. Macrostratigraphy and macroevolution in marine environments: testing the common-cause hypothesis. In: McGowan, A.J. & Smith, A.B. (eds) *Comparing the Geological and Fossil Records: Implications for Biodiversity Studies*. Geological Society, London, Special Publications, **358**, 95–104, <https://doi.org/10.1144/SP358.7>
- Ordnance Survey 2014. 1:25 000 Scale Colour Raster user guide and technical specification v2.5-11/2014.
- Raup, D.M. 1972. Taxonomic diversity during the Phanerozoic. *Science*, **177**, 1065–1071.

- Raup, D.M. 1977. Systematists follow the fossils. *Paleobiology*, **3**, 328–329.
- Raup, D.M. 1979. Biases in the fossil record of species and genera. *Bulletin of the Carnegie Museum of Natural History*, **13**, 85–91.
- R Core Team 2015. *R: A language and environment for statistical computing*. R Foundation for Statistical Computing, Vienna, <https://www.R-project.org/>
- Rook, D.L., Heim, N.A. & Marcot, J. 2013. Contrasting patterns and connections of rock and biotic diversity in the marine and non-marine fossil records of North America. *Palaeogeography, Palaeoclimatology, Palaeoecology*, **372**, 123–129, <http://doi.org/10.1016/j.palaeo.2012.10.006>
- Sakamoto, M., Venditti, C. & Benton, M.J. 2016. 'Residual diversity estimates' do not correct for sampling bias in palaeodiversity data. *Methods in Ecology and Evolution*, first published online 24 October, 2016, <https://doi.org/10.1111/2041-210X.12666>
- Sandberg, P.A. 1983. An oscillating trend in Phanerozoic non-skeletal carbonate mineralogy. *Nature*, **305**, 19–22.
- Sanders, H.L. 1968. Marine benthic diversity: a comparative study. *American Naturalist*, **102**, 243–282.
- Seilacher, A., Reif, W.-E., Westphal, F., Riding, R., Clarkson, E.N.K. & Whittington, H.B. 1985. Sedimentological, ecological and temporal patterns of fossil Lagerstätten. *Philosophical Transactions of the Royal Society of London, Series B*, **311**, 5–24.
- Sepkoski, J.J., Jr. 1976. Species diversity in the Phanerozoic: species–area effects. *Paleobiology*, **2**, 298–303.
- Sepkoski, J.J., Jr. 1989. Periodicity in extinction and the problem of catastrophism in the history of life. *Journal of the Geological Society, London*, **146**, 7–19, <http://doi.org/10.1144/gsjgs.146.1.0007>
- Sessa, J.A., Patzkowsky, M.E. & Bralower, T.J. 2009. The impact of lithification on the diversity, size distribution, and recovery dynamics of marine invertebrate assemblages. *Geology*, **37**, 115–118, <http://doi.org/10.1130/G25286A.1>
- Sheehan, P.M. 1971. A reflection of labor by systematists? *Paleobiology*, **3**, 325–328.
- Smith, A.B. 2001. Large-scale heterogeneity of the fossil record: implications for Phanerozoic biodiversity studies. *Philosophical Transactions of the Royal Society of London, Series B*, **356**, 351–367.
- Smith, A.B. 2007. Marine diversity through the Phanerozoic: problems and prospects. *Journal of the Geological Society, London*, **164**, 731–745, <http://doi.org/10.1144/0016/76492006-184>
- Smith, A.B. & Batten, D.J. (eds) 2002. *Fossils of the Chalk*, 2nd edn. Palaeontological Association, London.
- Smith, A.B. & Benson, R.B.J. 2013. Marine diversity in the geological record and its relationship to surviving bedrock area, lithofacies diversity, and original marine shelf area. *Geology*, **41**, 171–174, <http://doi.org/10.1130/G33773.1>
- Smith, A.B. & McGowan, A.J. 2005. Cyclicity in the fossil record mirrors rock outcrop area. *Biology Letters*, **1**, 443–445, <http://doi.org/10.1098/rsbl.2005.0345>
- Smith, A.B. & McGowan, A.J. 2007. The shape of the Phanerozoic marine palaeodiversity curve: how much can be predicted from the sedimentary rock record of western Europe? *Palaeontology*, **50**, 1–10.
- Smith, A.B. & McGowan, A.J. 2011. The ties linking rock and fossil records and why they are important for palaeobiodiversity studies. In: McGowan, A.J. & Smith, A.B. (eds) *Comparing the Geological and Fossil Records: Implications for Biodiversity Studies*. Geological Society, London, Special Publications, **358**, 1–7, <http://doi.org/10.1144/SP358.1>
- Smith, A.B., Gale, A.S. & Monks, N.E.A. 2001. Sea-Level change and rock-record bias in the Cretaceous: a problem for extinction and biodiversity studies. *Paleobiology*, **27**, 241–253.
- Stanley, S.M. & Hardie, L.A. 1998. Secular oscillations in the carbonate mineralogy of reef-building and sediment-producing organisms driven by tectonically forced shifts in seawater chemistry. *Palaeogeography, Palaeoclimatology, Palaeoecology*, **144**, 3–19.
- Vermeij, G.J. & Grosberg, R.K. 2010. The great divergence: when did diversity on land exceed that in the sea? *Integrative and Comparative Biology*, **50**, 675–682, <http://doi.org/10.1093/icb/icq078>
- Woods, M.A. 2015. Applied palaeontology in the Chalk Group: quality control for geological mapping and modelling and revealing new understanding. *Proceedings of the Geologists' Association*, **126**, 777–787.
- Woods, M.A., Newell, A.J., Haslam, R., Farrant, A.R. & Smith, H. 2016. Predicting the subsurface. *Geoscientist*, **27**, 10–15.
- Wray, D.S. 1999. Identification and long-range correlation of bentonites in Turonian–Coniacian (Upper Cretaceous) chalks of northwest Europe. *Geological Magazine*, **136**, 361–371, <http://doi.org/10.1017/S0016756899002836>
- Wray, D.S. & Gale, A.S. 2006. The palaeoenvironment and stratigraphy of Late Cretaceous Chalks. *Proceedings of the Geologists' Association*, **117**, 145–162, [http://doi.org/10.1016/S0016-7878\(06\)80006-4](http://doi.org/10.1016/S0016-7878(06)80006-4)
- Wray, D.S. & Jeans, C. V. 2014. Chemostratigraphy and provenance of clays and other non-carbonate minerals in chalks of Campanian age (Upper Cretaceous) from Sussex, southern England. *Clay Minerals*, **49**, 327–340, <http://doi.org/10.1180/claymin.2014.049.2.10>