

Kesley Attridge
Lucy S. K. Walker

Homeostasis and function of regulatory T cells (Tregs) in vivo: lessons from TCR-transgenic Tregs

Authors' addresses

Kesley Attridge¹, Lucy S. K. Walker²

¹Kennedy Institute of Rheumatology, University of Oxford, Oxford, UK.

²Institute for Immunity and Transplantation, University College London Medical School, London, UK.

Correspondence to:

Lucy Walker

Institute for Immunity and Transplantation
University College London Medical School

Royal Free Campus

Rowland Hill Street

London NW3 2PF, UK

Tel.: +44 020 7794 0500

Fax: +44 020 7433 1943

e-mail: lucy.walker@ucl.ac.uk

Acknowledgements

We are grateful to Rupert Kenefick and Chun Jing Wang for Treg Ki67 staining (Fig. 2), and to Gemma Ryan for artwork (Fig. 3). We thank David Sansom for critical reading of the manuscript. L. S. K. W. is funded by an MRC Senior Fellowship. The authors declare no conflicts of interest.

This is an open access article under the terms of the Creative Commons Attribution License, which permits use, distribution and reproduction in any medium, provided the original work is properly cited.

This article is part of a series of reviews covering Regulatory Cells in Health and Disease appearing in Volume 259 of *Immunological Reviews*.

Immunological Reviews 2014

Vol. 259: 23–39

Printed in Singapore. All rights reserved

© 2014 The Authors. *Immunological Reviews* Published by John Wiley & Sons Ltd.

Immunological Reviews

0105-2896

© 2014 The Authors. *Immunological Reviews* Published by John Wiley & Sons Ltd.

Immunological Reviews 259/2014

Summary: The identification of CD25 and subsequently Forkhead box protein 3 (Foxp3) as markers for regulatory T cells (Tregs) has revolutionized our ability to explore this population experimentally. In a similar vein, our understanding of antigen-specific Treg responses in vivo owes much to the fortuitous generation of T-cell receptor (TCR)-transgenic Tregs. This has permitted tracking of Tregs with a defined specificity in vivo, facilitating analysis of how encounter with cognate antigen shapes Treg homeostasis and function. Here, we review the key lessons learned from a decade of analysis of TCR-transgenic Tregs and set this in the broader context of general progress in the field. Use of TCR-transgenic Tregs has led to an appreciation that Tregs are a highly dynamic proliferative population in vivo, rather than an anergic population as they were initially portrayed. It is now clear that Treg homeostasis is positively regulated by encounter with self-antigen expressed on peripheral tissues, which is likely to be relevant to the phenomenon of peripheral repertoire reshaping that has been described for Tregs and the observation that the Treg TCR specificities vary by anatomical location. Substantial evidence has also accumulated to support the role of CD28 costimulation and interleukin-2 in Treg homeostasis. The availability of TCR-transgenic Tregs has enabled analysis of Treg populations that are sufficient or deficient in particular genes, without the comparison being confounded by repertoire alterations. This approach has yielded insights into genes required for Treg function in vivo, with particular progress being made on the role of *ctla-4* in this context. As the prospect of manipulating Treg populations in the clinic becomes reality, a full appreciation of the rules governing their homeostasis will prove increasingly important.

Keywords: Tregs, immune regulation, tolerance, TCR-transgenic, Treg proliferation, Treg function

Introduction

Despite the theoretical capacity to form $>10^{15}$ unique $\alpha\beta$ T-cell receptors (TCRs) (1), humans contain only around 10^{12} T cells (2), indicating that only a small fraction of potential TCR specificities is deployed at any one time. Protective immunity against a wealth of unpredictable infections therefore relies on a high level of TCR cross-reactivity (3, 4) that is beginning to be documented experimentally (5). In light of this understanding, the simplistic notion that T cells are purged of self-reactive specificities during thymic

development becomes untenable; removing all cells with the potential to cross-react with self-antigens would leave us with a dangerously narrow protective repertoire. In parallel with this realization, support has grown for the existence of additional tolerance mechanisms that might compensate for the inherent limitations of negative selection. Indeed, the concept of dominant tolerance, whereby T cells with regulatory function actively control the self-reactive T cells that enter the peripheral repertoire, is now well recognized (6–10). Considerable research effort has focused on unraveling the identity and characteristics of the regulatory T-cell population(s) and a large body of knowledge has now been gathered in this area. One approach that has proved informative is the use of regulatory T cells (Tregs) expressing transgenic TCRs, permitting analysis of the antigen-specific activation of this population *in vivo*. Here, we review some of the insights that have been made using this approach and how it has shaped our understanding of Treg biology.

TCR-transgenic Tregs: a window on Treg thymic selection

While the focus of this review is the homeostasis and function of Tregs in the periphery, it is important to first briefly consider Treg thymic selection. Study of TCR-transgenic Tregs has been formative in shaping many of our current ideas about how Tregs are generated intrathymically. In fact, the important observation that thymocytes could be directed to differentiate into Treg in response to thymic self-antigen expression was made using a TCR-transgenic system with specificity for influenza hemagglutinin (HA) (11). This paradigm was subsequently shown to hold true for other transgenic TCR/cognate antigen double-transgenic systems (12, 13). For example, DO11.10 TCR-transgenic mice on a recombinase activating gene-deficient ($RAG^{-/-}$) background fail to develop Tregs (14); however, transgenic provision of ovalbumin (OVA) in the thymus permits Treg generation in these mice (13). In the latter experiments, OVA was expressed under the control of the rat insulin promoter (rip-mOVA), which is known to drive expression of functionally significant levels of OVA intrathymically (15), like the endogenous insulin promoter (16). Interestingly, RAG-sufficient DO11.10 TCR-transgenic mice were found to select a small number of Tregs in the absence of thymic OVA expression (13, 14, 17), but these Tregs were enriched for endogenous TCR α chains (13, 17) consistent with the use of an alternative TCR to support their differentiation. Thus, T cells with TCRs that cannot

recognize intrathymic antigen (DO11.10/ $RAG^{-/-}$) were precluded from differentiating into Treg, but provision of relevant antigen in the thymus (DO11.10⁺ rip-mOVA⁺ $RAG^{-/-}$), or the potential to recognize intrathymic antigen using non-transgenic TCR chains (DO11.10/ RAG^{+}) permitted Treg generation.

Leading on from the use of TCRs specific for model antigens, a subsequent wave of experiments employed transgenic TCRs that were derived from naturally occurring Tregs (18, 19). These experiments reinforced the role of TCR specificity in Treg thymic selection and suggested a model in which intraclonal competition limits the number of T cells of a given specificity that can develop into Tregs (18, 19). Whether such niche constraints restrict Treg differentiation in the context of a diverse repertoire of precursors remains less clear (20).

Tregs as a highly proliferative population

Lack of Treg anergy *in vivo*

Early analysis of mature Tregs using *in vitro* assays identified a striking lack of proliferation following TCR engagement, leading to the characterization of this population as naturally anergic (14, 21, 22). In fact, anergy came to be known as one of the defining features of Treg populations. The generation of mice bearing TCR-transgenic Tregs provided the first opportunity to monitor Treg behavior *in vivo*, using clonotypic antibodies to track a discrete cohort of adoptively transferred Tregs responding to a specific antigen. Surprisingly, this approach revealed a remarkable capacity for Tregs to proliferate when responding to cognate antigen *in vivo*. Accordingly, OVA-specific Tregs mounted a robust proliferative response to OVA protein in incomplete Freund's adjuvant (IFA) (13) (Fig. 1), while HA-specific TCR-transgenic Tregs proliferated and accumulated in the draining lymph node (LN) following subcutaneous immunization with HA peptide in IFA (23).

The Tregs utilized in the above experiments derived from double-transgenic mice expressing the TCR transgene in conjunction with its relevant antigen under ubiquitous (phosphoglycerate kinase-HA) or tissue-specific (rip-mOVA) control. In both sets of double-transgenic mice, CD25⁺ cells expressing the TCR transgene were detectable in the thymus and peripheral lymphoid organs (13, 23) and exhibited typical Treg features including the presence of intracellular cytotoxic T-lymphocyte antigen-4 (CTLA-4) and low levels of surface interleukin 7 receptor α (IL-7R α) expression (13). These experiments were performed prior to the

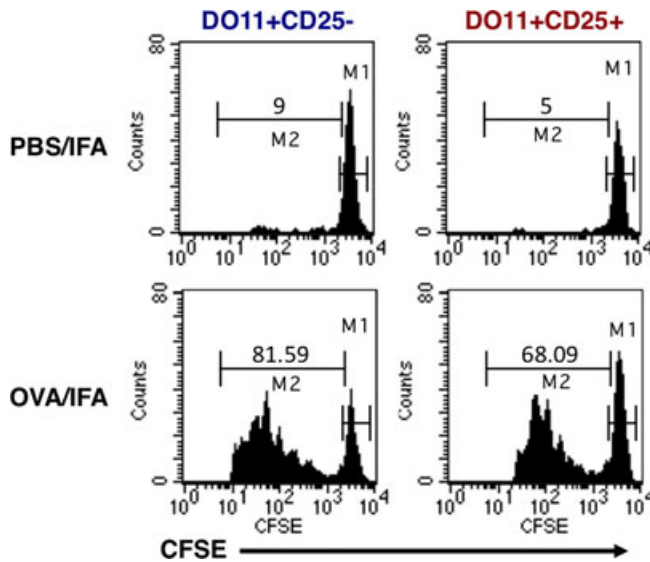


Fig. 1. Proliferation of T-cell receptor-transgenic Tregs in vivo after immunization with cognate antigen. Conventional or regulatory T cells were purified from DO11 × rip-mOVA mice, CFSE-labeled, and adoptively transferred into BALB/c recipients. Recipient mice were injected subcutaneously with PBS or OVA emulsified in incomplete Freund's adjuvant. Three days later, the proliferation of DO11⁺ T cells in draining LN was assessed.

development of Forkhead box protein 3 (Foxp3) staining protocols, but several lines of evidence argued against the CD25⁺ cells being activated conventional T cells rather than Tregs. Notably, the extensive proliferative response of this population was uncoupled from production of cytokines such as IL-2, interferon- γ (IFN γ), and IL-4 (13, 23), and instead IL-10 production was observed in one of the studies (23). In addition, while TCR-transgenic conventional T cells upregulated CD40L following antigen encounter, this response was completely lacking in the TCR-transgenic CD25⁺ fraction (13). Perhaps, the most compelling demonstration that the TCR-transgenic CD25⁺ cells were in fact Tregs was that despite their capacity to proliferate *in vivo*, they were strictly anergic when assessed *in vitro* and elicited robust suppression in standard co-culture assays (13, 23). Thus, TCR-transgenic Tregs recapitulated the *in vitro* behavior previously ascribed to this subset, yet permitted new insights into the antigen-responsiveness of this population *in vivo*.

In addition to responding to protein antigen emulsified in adjuvant, TCR-transgenic Tregs were also shown to proliferate following provision of peptide-pulsed bone marrow-derived dendritic cells (DCs) (24). In the latter study, subcutaneous injection of OVA-pulsed DCs triggered the proliferation of OVA-specific Tregs in the draining LN, leading to an eight- to 10-fold expansion over the course of 3 days. Elegant studies

in which mice were engineered to transgenically express TCR chains from a scurfy mouse-derived CD4⁺ T cell also revealed robust proliferation within the Foxp3⁺ compartment (25), demonstrating that the phenomenon extended beyond the extensively utilized TCRs specific for model antigens.

Validation that TCR-transgenic Tregs were accurately mimicking the proliferative capacity of normal polyclonal Tregs came from experiments in which CD4⁺ CD25^{hi} CD62L^{hi} cells were carboxyfluorescein succinimidyl ester (CFSE)-labeled and adoptively transferred into congenically distinct recipient mice (26). Thirty-five days later, approximately 70% of the donor Tregs had divided, most of them more than six times. Interestingly, the CD25^{hi} phenotype of the injected Treg population was remarkably stable, with approximately 90% of the cells retaining high CD25 expression even 70 days following transfer. This is consistent with the subsequent demonstration that Treg Foxp3 expression is also very stable under physiologic conditions (27). Bromodeoxyuridine (BrdU) labeling experiments further supported the notion that Tregs represent a highly proliferative population in normal mice, with Tregs consistently incorporating higher levels of this thymidine analog than conventional T cells (26, 28). In line with this, the proportion of CD4⁺ Foxp3⁺ Tregs staining positive for the proliferation marker Ki67 is consistently higher than that of the conventional T-cell fraction (Fig. 2), and is still higher if Tregs are rendered deficient in the lipid phosphatase PTEN (29). Further insight into the biochemical control of Treg proliferation was recently gleaned by analysis of animals in which raptor, an obligatory component of the mammalian target of rapamycin complex 1 (mTORC1) complex, was selectively deleted in Tregs (30). Raptor-deficient Tregs showed a striking lack of proliferation, compared with control Tregs, when cell trace labeled and adoptively transferred into normal recipients. These experiments established a critical role for raptor/mTORC1 signaling in Treg proliferation, with the mevalonate pathway proving particularly important (30).

Experiments examining the proliferative capacity of human Tregs have largely recapitulated findings in mice (Fig. 2). Despite *in vitro* anergy (31, 32), when analyzed *ex vivo*, on average 22% of blood CD4⁺ CD25⁺ CD127^{lo} Foxp3⁺ T cells stained positive for the proliferation marker Ki67 compared with 5% of the CD4⁺ CD25^{int} cells and 2% of the CD4⁺ CD25⁻ cells (33). This high proliferative capacity was maintained over a period of 3–4 months in longitudinally tracked individuals (33). Detailed characterization of human

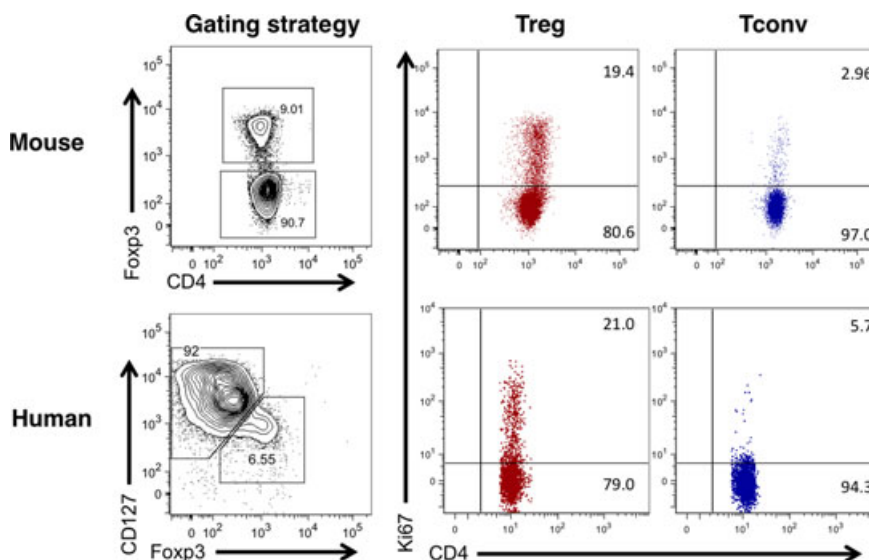


Fig. 2. Analysis of mouse and human Treg proliferation by Ki67 staining. Tregs from the LN of a BALB/c mouse or from human blood were stained with Ki67. Murine Tregs were defined as $CD4^+ Foxp3^+$. Human Tregs were defined as $CD4^+ CD127^{low} Foxp3^+$.

Treg populations by the Sakaguchi group has clarified that the proliferative fraction resides within the $CD45RA^- Foxp3^{hi}$ ‘activated Treg’ population (34). Interestingly, recent analysis indicates that Tregs isolated from human secondary lymphoid organs show evidence of an even greater proliferative capacity than those found in blood, with approximately 60% staining positive for Ki67 compared with around 20% in blood-derived Tregs (35). Collectively, these studies have radically changed our view of Tregs from an anergic and unresponsive population to a highly dynamic one, equipped to respond rapidly to homeostatic and antigenic cues (36).

Treg proliferation in infection, autoimmunity, and cancer

In addition to proliferating in the steady state, it is now well established that a variety of stimuli can enhance Treg proliferation. These include a wide range of immunological perturbations including exposure to infectious agents. For example, it has been demonstrated that Tregs proliferate and accumulate at sites of *Leishmania major* infection, with up to 80% of Tregs from such sites showing the capacity to respond specifically to *Leishmania*-infected DCs *ex vivo* (37). Similarly, infection of mice with *Mycobacterium tuberculosis* (Mtb) was shown to trigger proliferation of pathogen-specific TCR-transgenic Tregs (38). Subsequent studies by the same group used tetramers to show that endogenous Mtb-specific Tregs also proliferated and expanded in the pulmonary lymph node of infected mice. Importantly, Treg accumulation was short-lived due to selective loss of these

cells via an IL-12 and Tbet-dependent mechanism, thereby lifting regulation during the latter stages of infection (39). Viruses can also trigger the expansion of Tregs (40–42), and in one case, this was shown to occur by a superantigen-dependent pathway (43). Similarly, Tregs are known to proliferate in response to helminths with the proportion of $Foxp3^+$ Tregs incorporating BrdU in the pleural cavity increasing from approximately 20% to over 50% following *Litomosoides sigmondontis* infection (44). In a separate study, Tregs expanded in response to *Heligmosomoides polygyrus* infection in an inducible costimulatory (ICOS)-dependent manner, and this was shown to reflect a role for ICOS in supporting the survival of divided Tregs, rather than an obligate role in proliferation itself (45).

In the context of autoimmune disease, Tregs have been shown to exhibit heightened proliferation in the peripheral blood of individuals with systemic autoimmunity (46) and at the site of inflammation in tissue-specific autoimmunity. For example, Tregs from the synovial fluid of arthritis patients showed substantially higher proliferation than those in peripheral blood (47), and increased Treg proliferation has been documented in the inflamed CNS of mice with EAE (48) and the pancreas of BDC2.5 NOD mice (49). In the latter model, mice express a transgenic TCR comprising rearranged TCR α and β genes from a diabetogenic T-cell clone isolated from a non-obese diabetic (NOD) mouse (50). Both Treg and effector T cells infiltrate the islets in BDC2.5 NOD mice, and disease incidence is low unless Treg development is precluded by introduction of the

Foxp3 scurfy mutation (51). Tregs infiltrating the pancreas of BDC2.5 NOD mice were shown to incorporate higher levels of BrdU than conventional T cells present at this site (49). Consistent with this observation, Tregs infiltrating the islets in non-TCR-transgenic NOD mice showed increased staining for Ki67 compared with conventional T cells; intriguingly, this was the case in new onset disease but not in prediabetic animals (52). The loss of pancreas-resident Tregs following administration of the chemotherapeutic alkylating agent cyclophosphamide (53) may in part reflect its ability to efficiently inhibit Treg proliferation (54).

Tregs have long been recognized to be overrepresented in tumors (55), prompting interest in their proliferation at such sites. In the context of B16F10 and 4T1 tumors, analysis of tumor-draining LNs showed that Tregs proliferated substantially more than effector CD4⁺ or CD8⁺ T cells (56). Tregs infiltrating brain tumors in a mouse model of glioblastoma showed markedly increased proliferation compared with their Foxp3-negative counterparts (57). Furthermore, analysis of carcinogen-induced sarcomas in mice revealed that over 60% of the tumor-infiltrating Tregs incorporated BrdU following a 3-day pulse, clearly illustrating the high proliferative potential of the tumor-resident Treg population (58). Expansion of intratumoral Tregs is thought to reflect the marked proliferation of a few dominant clones (59) and could be driven in part by the high levels of TGFβ that typifies the tumor microenvironment (60) or by factors associated with angiogenesis such as vascular endothelial growth factor (61).

The discovery that Tregs can proliferate in the steady state has been rapidly followed by an appreciation that this proliferative response can be significantly augmented in a variety of medically relevant settings including infection, autoimmunity, and cancer. Such expansion could potentially serve to bolster the Treg population during immunological insults, such that they are poised to efficiently terminate immune responses (62).

Factors controlling peripheral Treg homeostasis

Role of TCR signaling in shaping Treg homeostasis

A major force that shapes the homeostasis of Treg populations in the periphery is signaling through the TCR. The seeds of this idea were sown by Peter McCullagh (63), who hypothesized that within any given T-cell clone, both 'high' and 'low' pathogenicity cells are selected in the thymus, with the latter able to regulate the pathogenicity of the former. Importantly, the low pathogenicity (regulatory) clones were postulated to have a short duration of survival following release from the thymus unless exposed to their specific ligand (63). The experimental basis for McCullagh's hypothesis was the observation that temporary removal of the thyroid gland in gestating lambs triggered its destruction upon re-implantation, but rejection did not occur if part of the gland was allowed to remain in the animal (64). Further support for the notion that Treg homeostasis was controlled by access to peripheral self-antigen (Fig. 3) emerged from studies in rats; ablation of thyroids *in utero* rendered peripheral CD4⁺ T cells incapable of preventing thyroid autoimmunity, while preserving their

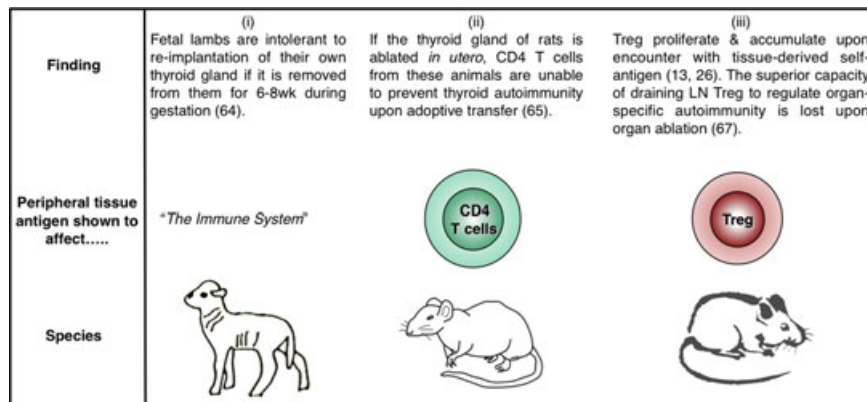


Fig. 3. Role of peripheral self-antigen in Treg homeostasis – 2 decades of progress. (i) Early experiments (1989) in fetal lambs showed that the continued presence of the thyroid gland was necessary for maintenance of immunological tolerance toward this organ. The cell type mediating such tolerance was not defined. (ii) Studies in the rat (1999) showed that ablation of the thyroid gland compromised the ability of peripheral CD4⁺ T cells to regulate autoimmune thyroiditis. (iii) Experiments in mice (2003, 2004, 2009) showed that Tregs proliferate in response to tissue-expressed self-antigen; Tregs isolated from draining LNs had a heightened capacity to regulate autoimmune organ destruction in a manner that was lost upon organ ablation.

capacity to control other autoimmune diseases (65). The implication of these data is that CD4⁺ T cells with regulatory activity fail to expand to a sufficient frequency or fail to survive, if denied the opportunity to encounter relevant autoantigen in the periphery.

The advent of TCR-transgenic Tregs permitted the direct assessment of the role of peripheral self-antigen in controlling Treg homeostasis. CFSE-labeled OVA-specific (13) or HA-specific (26) Tregs were adoptively transferred into mice expressing the relevant antigen as a tissue-specific self-protein, and the proliferative response in the draining LN was assessed a few days later. In both cases, antigen expression was directed to the pancreatic islets through use of the rat insulin promoter, and the antigen-specific Tregs were demonstrated to proliferate specifically in the pancreatic LNs but not in non-draining LNs (13, 26) (Fig. 3). Importantly, the absolute number of OVA-specific Tregs in the draining LN was higher after adoptive transfer into mice expressing OVA as a self-antigen compared with antigen-negative littermates (13), consistent with a role for peripheral antigen in positively regulating Treg homeostasis. Similarly, Tregs endowed with the capacity to regulate autoimmune ovarian disease were found to be concentrated in the ovary-draining LN (66). In fact, it was shown for a range of organ-specific autoimmune diseases that Treg activity was enriched in the autoantigen-draining LN in a manner that could be abolished by selective autoantigen ablation (67). These data add a CD4⁺ CD25⁺ Foxp3⁺ dimension to the thyroid ablation studies performed a decade earlier (65) that examined the regulatory capacity of the CD4⁺ population as a whole (Fig. 3). As LNs draining the site of autoantigen expression have been shown to be key sites for the priming of autoreactive pathogenic T cells (68, 69), it appears that regional LNs are actively involved in both the generation and suppression of tissue-specific autoimmune responses.

The considerable proliferative capacity of Tregs *in vivo* begs the question of which cell type supports such a response. In this regard, most attention to date has focused on DCs. DCs have been shown to be capable of driving Treg proliferation both *in vitro* and *in vivo* (24), particularly those bearing a CD8 α -negative phenotype (70). DCs are also required for the expansion of Tregs in the setting of chronic LCMV infection (43). Ablation of DCs in mice expressing diphtheria toxin receptor under the control of the CD11c promoter significantly reduced Treg proliferation (71), although it should be noted that mice constitutively lacking DCs from birth showed only a marginal reduction in Treg numbers (72). Nevertheless, augmenting the DC population by exogenous Flt3 ligand

administration significantly increases the Treg population, even in thymectomized mice, arguing for effects on peripheral homeostasis rather than thymic generation (73). Further support for an influential role for DCs in Treg homeostasis derives from the observation that Treg numbers correlate with the number of major histocompatibility complex (MHC) class II-expressing DCs (74). The requirement for DCs to express MHC class II to influence Treg homeostasis (74) is consistent with a role for Treg TCR signaling and fits with the observation that Tregs rendered p56(Lck)-deficient are impaired in their proliferative response *in vivo* (75).

The above observations suggest a model in which the size of the peripheral Treg niche is set by the availability of MHC class II-expressing DCs bearing relevant peptides. This model is supported by the demonstration that wildtype Tregs, presumably selected on a diverse array of peptides in the thymus, failed to divide in the periphery if transferred to mice in which the MHC class II molecules were loaded with a single peptide, CLIP (76). In contrast, Tregs selected within a thymic environment expressing only CLIP proliferated to a greater extent in the periphery of these animals, consistent with having more Tregs-bearing TCRs that recognize this peptide (76). Artificially supplementing TCR engagement by administration of anti-CD3 permits enlargement of the Treg population by driving additional Tregs into cycle, offering further support for the involvement of TCR signaling in setting the size of the peripheral Treg niche (77).

The proliferation (13, 26) and selective accumulation (66, 67, 78) of Tregs in LN draining sites of self-antigen expression implies that Treg with a given TCR specificity is not uniformly distributed throughout the body but rather are subject to local homeostatic control. In line with this idea, by sequencing TCR α chains in mice with a fixed TCR β chain, the Hsieh laboratory (79) showed that the TCR repertoire of Tregs varies substantially according to anatomical location. This variation differs from similar analysis of the naive T-cell population, which revealed little repertoire skewing between anatomical sites (79), consistent with the free recirculation of naive T cells between secondary lymphoid organs.

Lymphoid organs aside, there is an increasing appreciation that Tregs can be found embedded within tissues themselves (e.g. within adipose tissue) (80) and that the repertoire of these Tregs may be distinctive (81). Now that the existence of tissue-resident memory T cells has been clearly documented in humans (82), understanding whether discrete populations of Treg police each of these niches and defining the rules governing the maintenance of such populations will be an important aim.

Role of IL-2 in peripheral Treg homeostasis

It is well accepted that the cytokine most influential in Treg homeostasis is IL-2. The immunoregulatory role of this cytokine first came to light with the observation that mice deficient in IL-2 signaling exhibit polyclonal expansion of lymphocytes with tissue infiltration, autoantibody production, anemia, and in some cases, inflammatory bowel disease (83–85). Available evidence, albeit limited, suggests that IL-2R α deficiency also causes a similar phenotype in humans, with lymphadenopathy, anemia, and multi-organ lymphocytic infiltration (86). The prospect that this might reflect impairment of regulatory cells was raised by mixing experiments in which the presence of IL-2-sufficient T cells curbed the uncontrolled expansion of those rendered IL-2 deficient (87). The advent of CD25 as a marker of the Treg population permitted a more refined version of this experiment in which CD4⁺ CD25⁺ cells were shown to prevent lethal autoimmunity following adoptive transfer into IL-2R β -deficient mice (88). Along similar lines, CD4⁺ CD25⁺ cells prevented disease caused by the introduction of IL-2R α ^{-/-} bone marrow into rag-deficient hosts (89). Thus, the dysregulated immunity in mice lacking IL-2 signaling could be attributed to a failure to maintain CD4⁺ CD25⁺ Tregs.

The central role for IL-2 in Treg homeostasis and metabolic fitness has since been clearly demonstrated (90, 91). IL-2 has been shown to reinforce qualitative aspects of the Treg program in addition to simply conferring a survival advantage, as Tregs that lack IL-2 signaling express low levels of numerous markers associated with the Treg phenotype (CTLA-4, CD39, CD73) (92). Interestingly, the role of the microRNA miR155 in promoting Treg homeostasis is thought to reflect its ability to inhibit SOCS1, thereby sensitizing Treg to IL-2 signaling (93). Along similar lines, Tregs are characterized by low SOCS3 expression, compared with conventional T cells, further increasing their IL-2 responsiveness (94).

Elegant experiments using bone marrow chimeric mice revealed that the size of the peripheral CD4⁺ CD25⁺ Treg compartment is directly related to the number of conventional T cells capable of producing IL-2 (95). Consistent with this scenario, neutralizing IL-2 with antibodies reduces the steady state *in vivo* proliferation of Treg in normal mice (71, 96). Conversely, acute Treg ablation triggers a dramatic increase in the proliferation of those Tregs remaining (from approximately 20% to 70% Ki67⁺), and this increase correlates with increased plasma levels of IL-2 (97). The pivotal

role of IL-2 in setting the size of the peripheral Treg compartment has led to therapeutic IL-2 administration being tested in mouse models of autoimmunity (52, 98, 99) and subsequently in several human clinical trials (100–103).

The coupling of Treg numbers to conventional T-cell IL-2 production (95) laid the foundation for the notion that Treg homeostasis and function can be 'boosted' by the conventional T-cell compartment (104). Accordingly, experiments with TCR-transgenic T cells and Tregs sharing the same specificity revealed that T-cell activation triggers a feedback loop whereby suppressive capacity is augmented hand in hand with the conventional T-cell response (104). One manifestation of this is the striking observation that when conventional T cells are activated by antigen *in vivo*, the early wave of IL-2 produced serves primarily to activate Treg in the locality (105). However, IL-2 cannot explain the whole of the boost effect, and a role for TNF α in augmenting Treg proliferation was also identified (104). Intriguingly, recent data suggest that in certain settings, Treg function may also be boosted by engagement of their surface Nrp1 by the ligand Sema4a (106). The feedback loops operating to ensure appropriate suppression during immune responses are only now beginning to emerge and alterations in these may well underlie the immune imbalance observed in the context of autoimmunity.

Role of CD28 in Treg homeostasis

One of the earliest pathways identified in our quest to understand Treg homeostasis was costimulation through CD28. The surprising observation that autoimmune diabetes was exacerbated in mice lacking CD28, or its ligands CD80 and CD86, was reconciled by the discovery that Tregs were dramatically reduced in these animals (107). Tregs were defined on the basis of CD25 expression in the latter study, but the deficit of Tregs in CD28 knockout mice was later confirmed using Foxp3 staining (108). The proliferation of CFSE-labeled polyclonal Treg adoptively transferred into syngeneic mice could be blocked by antibodies to CD80 and CD86 (109), and this was associated with a decrease in Treg number and also a loss in the intensity of CD25 expression (109). The latter was subsequently attributed to CD28 deficiency in the conventional T-cell compartment, presumably resulting in decreased IL-2 availability (110). The contribution of NF- κ B-inducing kinase (NIK) to CD28 signaling (111) may provide a potential explanation of why NIK-deficient Tregs exhibit a defect in peripheral homeostasis (112).

Further evidence for the importance of costimulatory signals in Treg homeostasis arose from analysis of CTLA-4-deficient mice that have a lymphoproliferative phenotype (113, 114) driven by excessive CD28 signaling (115). These animals exhibit increased Treg proliferation and an augmented Treg population (116, 117) consistent with the role of CD28 in promoting Treg proliferation. Likewise, short-term blockade of CTLA-4 in wildtype mice increases Treg proliferation (116, 118, 119), an effect that is recapitulated by administration of anti-CTLA-4 antibody to humans (120). Given the importance of CD28 in driving Treg proliferation and the role of CTLA-4 in limiting CD28 engagement (121–123), the Treg proliferation induced in CTLA-4^{-/-} mice and by anti-CTLA-4 antibody likely results from enhanced CD28 signaling due to increased availability of costimulatory ligands.

The recent generation of mice in which CD28 can be inducibly deleted has allowed further exploration of the role of this receptor in Treg homeostasis (110). Accordingly, tamoxifen-induced CD28 deletion was shown to trigger a dramatic reduction in Treg frequencies as early as 1 week after treatment (110). The decrease in Tregs was also observed in thymectomized mice and was associated with reduced Ki67 staining, implying a crucial role for CD28 in peripheral Treg maintenance. To home in on the role of CD28 specifically in Tregs, the Turka group (124) generated an animal model in which CD28 was selectively deleted from Foxp3-expressing cells. Mice with a floxed CD28 gene were crossed with Foxp3-YFP-Cre mice, such that Foxp3 promoter activity was linked both to yellow fluorescence protein (YFP) expression and excision of the floxed CD28 gene. A decrease in the proportion of Foxp3⁺ Treg was observed within the CD4 single-positive population in the thymus (124), in line with the known role of CD28 in promoting thymic selection of Tregs (108, 109, 125). However, the peripheral Treg compartment was replete in these animals, consistent with the notion that peripheral Treg homeostasis can be uncoupled from thymic output (89). Intriguingly, the animals lacking CD28 in Tregs developed autoimmune symptoms over time, primarily focused on the liver and skin, supporting a requirement for CD28 in Treg function (124). In female mice heterozygous for Foxp3-Cre in which approximately half the Tregs delete CD28 (due to random inactivation of the X-chromosome), CD28-dependent effects on Treg homeostasis were revealed. Accordingly, the CD28-sufficient Tregs in these animals incorporated significantly more BrdU than those lacking CD28 in the same animal (124). The competitive advantage conferred by Treg CD28 expression was further revealed by

mixed bone marrow transfers into irradiated recipients: when analyzed 6 months later, the entire Treg compartment appeared to derive from CD28-sufficient rather than CD28-deficient cells, while the rest of the hematopoietic compartment remained of mixed origin (124).

The early studies showing that DCs could drive Treg proliferation *in vivo* highlighted the importance of CD86/CD80 expression for this function; OT-II TCR-transgenic Treg proliferated robustly in the presence of OVA peptide-pulsed lipopolysaccharide-matured DCs, but the response was reduced by around 70% if the DCs derived from CD80/CD86 knockout mice (24). The key roles for DCs (71, 73, 74) and the CD80/CD86 axis (107, 109) in maintaining Treg homeostasis begged the question of whether DCs represent the critical source of costimulatory ligands for Treg *in vivo*. This issue was elegantly explored by experiments in which DC-deficient (CD11c:DTA) bone marrow and CD80/CD86-deficient bone marrow were mixed and used to reconstitute lethally irradiated wildtype mice (126). The only DCs able to develop in the resulting chimeras lacked expression of CD80 and CD86, but other cell types (such as B cells) expressed these ligands at normal levels. In the absence of DC-expressed CD80/CD86, Tregs developed normally in the thymus, but their numbers were markedly reduced in the periphery (126). This suggests that DCs are a crucial source of CD28 ligands for maintaining peripheral Treg homeostasis.

The role of CD28 in positively regulating Treg homeostasis also appears to hold true in humans (127). Accordingly, the proliferative response of human Tregs cultured for 6 days with allogeneic mature DCs is largely inhibited by blocking anti-CD86 antibody (128). In addition, IDO activation was shown to modulate proliferation of human Tregs in the context of mixed lymphocyte reaction responses in a manner dependent on CD80/CD86 (129). Thus, CD28 costimulation represents a primary pathway for promotion of Treg homeostasis in both mouse and human.

Apoptosis of peripheral Tregs

Given the considerable proliferation of Tregs evident *in vivo*, one might expect this population to be continually increasing in size. As this is not the case, it follows that Treg proliferation must be countered by apoptosis. Early work by Taams *et al.* (32) identified that blood CD4⁺ CD25⁺ cells had lower levels of Bcl2 than their CD25⁻ counterparts and were more prone to undergo apoptosis upon cytokine withdrawal. The propensity of murine Tregs to undergo cytokine-withdrawal apoptosis and the importance of

common γ -chain cytokines in countering this process was subsequently demonstrated (130). Intriguingly, it has recently been shown that Foxp3 itself can exhibit pro-apoptotic activity, increasing the activity of Puma and Bim and repressing Bcl2 expression in thymic Treg precursors, such that these cells must compete for cytokine signals to ensure their survival (131). IL-2 is normally critical for generating a replete peripheral Treg compartment, but this requirement can be circumvented if Treg apoptosis is prevented by Bim deficiency (132).

The importance of apoptosis in setting the size of the peripheral Treg niche has recently been demonstrated by the generation of mice that selectively lack the pro-apoptotic molecules Bak1 and Bax in Tregs; these mice show increased peripheral accumulation of Tregs, despite normal thymic development (97). A surprise finding from this study was that the anti-apoptotic protein responsible for promoting survival in the Treg compartment is Mcl-1 (97) rather than Bcl-2 or Bcl-XL, as has been tacitly assumed for years. Thus, the decreased level of Bcl2 observed in apoptosis-prone Tregs may actually be correlative rather than causal.

Experiments in mice suggest that the propensity of Tregs to apoptose may decline with age in a manner that is associated with decreased Bim expression. The latter conclusion was based on the observation that Bim levels were markedly lower in Tregs from 20-month-old mice compared with 1.5-month-old animals (133); how this relates to Treg homeostasis in aging humans remains to be established.

Use of TCR-transgenic Tregs to probe suppressive mechanisms *in vivo*

It is increasingly clear that Tregs can call upon a vast array of mechanisms to maintain dominant tolerance (134, 135). These are suggested to encompass use of granzyme B (136), CD73/CD39 (137), CTLA-4 (138, 139), TGF β (140, 141), IL-10 (142), and IL-35 (143). Tregs have also been demonstrated to act as an 'IL-2 sink' (144–146) and to induce the expression of enzymes that consume essential amino acids (147), in both cases depriving conventional T cells of essential growth factors. Moreover, Tregs are thought to interact with multiple target populations to effect suppression, including conventional T cells and antigen-presenting cells.

The role of CTLA-4 in Treg-mediated suppression has been a matter of contention for more than a decade (108, 148). The issue first came to light after the demonstration that unlike conventional CD4⁺ T cells, Tregs constitutively

express CTLA-4 (138, 139, 149). Many approaches have since been adopted in an effort to clearly define the function of Treg-expressed CTLA-4, an endeavor that has been complicated by a lack of clarity on the basic nature of CTLA-4-mediated inhibition. In addition, the lethal lymphoproliferative syndrome observed in CTLA-4^{-/-} mice (113, 114) has rendered data obtained from these animals difficult to interpret. However, recent studies using antigen-specific Tregs have proved insightful. Indeed, our own laboratory has overcome some of the issues outlined above by using CTLA-4^{-/-} mice expressing the DO11.10 transgenic TCR on a RAG^{-/-} background. As the only TCR expressed in these mice is directed against a non-self-antigen, T cells retain a naive phenotype and the severe lymphoproliferative disease characteristic of CTLA-4^{-/-} mice is notably absent (150). Because Treg development is known to require cognate antigen expression in the thymus, crossing these mice with those expressing OVA intrathymically due to the rip-mOVA transgene permits the induction of Tregs with a single specificity that can be studied over the long term (116). An added benefit of this system is that the CD28 pathway is unaffected, unlike in systems where CTLA-4 immunoglobulin fusion protein (CTLA-4-Ig) or blocking antibodies against CD80 or CD86 is used to prevent lymphoproliferative disease.

We utilized Tregs from these mice in an adoptive transfer model of type-1 diabetes and were able to show that while CTLA-4-sufficient Tregs were effective at suppressing disease onset, lack of CTLA-4 expression specifically within the Tregs compartment prevented suppressive function, with all recipients rapidly becoming hyperglycemic (116). This was the first time that Treg populations with an identical specificity and affinity for antigen (conferred by their DO11.10/RAG^{-/-} status), either expressing or lacking CTLA-4, had been directly compared. The importance of CTLA-4 expression for Treg suppression of diabetes was consistent with the immune dysregulation triggered by Treg-specific deletion of the *ctla-4* gene (117) and has since been confirmed in another diabetes system where disease is driven by T cells responding to an endogenous pancreatic self-antigen (151).

Precisely how CTLA-4 contributes to Treg suppressive capacity is still not fully resolved. The first model put forward to account for CTLA-4-dependent cell-extrinsic function – that is the ability of CTLA-4 expressed on one cell to control the response of another cell – involved CTLA-4 'reverse signaling' through CD80/CD86 on APCs. CTLA-4-Ig (152) or CTLA-4-expressing Tregs (153) were shown to activate the suppressive enzyme IDO (indoleamine

2,3-dioxygenase) in APCs, with the ensuing local tryptophan depletion leading to inhibition of T-cell proliferation. However, others were unable to replicate the induction of IDO activity in APCs by CTLA-4-Ig (154) and abatacept, a CTLA-4-Ig fusion protein used clinically, was shown to suppress T-cell responses without upregulating IDO (155). Moreover, when the response of DCs to abatacept was assessed by Affymetrix microarray, minimal gene changes were observed and none at all if belatacept, a CTLA-4-Ig molecule with higher affinity for ligands, was used (156). Strikingly, a commercially available CTLA-4-Ig protein that retains full Fc-dependent effector functions induced robust gene changes in DCs (156). Among the genes upregulated was IFN γ , which had been shown to mediate CTLA-4-Ig-dependent induction of IDO (152). These findings raise the possibility that some of the data generated with CTLA-4-Ig fusion proteins might reflect Fc-dependent signaling rather than reverse signaling through CD80/CD86.

An alternative model of cell-extrinsic CTLA-4 function has emerged involving the downregulation of CD80/CD86 on APCs. In common with the reverse signaling model, this involves the APCs being rendered immunosuppressive, but this time as a result of impaired costimulatory ligand expression. The downregulation of CD80/CD86 expression on APCs by incubation with CTLA-4-expressing cells has been noted in numerous studies (116, 117, 157–163) and in many cases is blocked by anti-CTLA-4 antibody (116, 159, 162, 163) or CTLA-4 deficiency (117). In collaboration with the Sansom group (164), we identified a novel molecular mechanism by which CTLA-4 can downregulate CD80/CD86 that involves removal of these ligands from APCs by a process of trans-endocytosis. Using TCR-transgenic Tregs, we demonstrated that this process could occur *in vivo*, establishing that adoptively transferred Tregs could acquire GFP-tagged CD86 molecules from host APCs (164). Using CTLA-4^{-/-} TCR-transgenic Tregs that, we had shown, lack the capacity to regulate diabetes (116), we demonstrated that ligand trans-endocytosis *in vivo* was strictly dependent on CTLA-4 expression (164). Interestingly, we found that activated CTLA-4-expressing conventional T cells were also capable of trans-endocytosis, consistent with the recent demonstration that conventional T cells can utilize CTLA-4 in a cell-extrinsic manner *in vivo* (165, 166).

In addition to exploring the role of CTLA-4, TCR-transgenic Tregs have also been used to study the involvement of the TGF β pathway in Treg suppression. Although the importance of TGF β for maintaining immune homeostasis is

unquestioned, whether Tregs need TGF β for their suppressive function and whether conventional T cells need to perceive TGF β to be suppressed has been unclear. Using the BDC2.5 TCR, Ishigame *et al.* (157) investigated the necessity of TGF β R-mediated signals for Treg function. In this study, BDC2.5 T cells were adoptively transferred into SCID/NOD mice, with diabetes effectively prevented by co-transfer of Foxp3-RFP⁺ BDC2.5 Tregs. Repeating these co-transfers using the same Treg lacking TGF β RII revealed that TGF β signaling via this receptor is not required for Treg function, as all recipients remained disease-free (167). Likewise Tregs lacking TGF β RII expression retained the capacity to regulate colitis, resulting in colon histopathology indistinguishable from that of mice treated with TGF β RII-sufficient Tregs (168). This differs from results seen when effector T cells were rendered insensitive to TGF β using a dominant negative form of the TGF β RII; in mouse models of diabetes (169) and colitis (170), effector cells that were unable to respond to TGF β failed to be appropriately controlled by Tregs. Curiously, in the colitis model, when TCR-transgenic Tregs (DO11.10) that were either sufficient or deficient for TGF β 1 were compared, no difference was observed in their ability to suppress pathology (170) and yet suppression was abrogated by anti-TGF β antibody in both cases. This observation suggests that successful suppression of a destructive immune response by Tregs can require TGF β even when the Tregs themselves are not producing this cytokine. Using T cells lacking TGF β RII expression, rather than those expressing dominant negative TGF β RII, it was recently shown that conventional T cells do not require the capacity to respond to TGF β signaling for suppression to occur *in vivo* (168), mirroring results obtained earlier using *in vitro* assays (171). While at face value, these data are hard to reconcile, one possible interpretation is that TGF β is not a direct mediator of Treg function *per se* but is involved in generating an environment permissive of suppression. Thus, TGF β availability would support Treg function, without being an absolute requirement for it. Since strong TCR signaling can release T cells from Treg suppression (172, 173), the observation that TGF β decreases T-cell sensitivity to TCR stimulation (168) could potentially be important in this regard.

Insights into peripheral Treg induction

In addition to their valuable contribution to our understanding of thymus-derived Tregs (tTregs), TCR-transgenic systems have helped to shed light on the biology of T cells induced to express Foxp3 in the periphery (pTreg) [for Treg nomenclature, see Abbas *et al.* (174)]. The potential to start

with a mono-specific conventional T-cell population free from Tregs is a major advantage of such systems. In elegant experiments that utilized the known specificity of the 5C.C7 TCR, the Allison laboratory (175) demonstrated that optimal Foxp3 induction in adoptively transferred CD4⁺ T cells occurred in response to low doses of high-affinity ligand. Furthermore, the small population of cells that did express Foxp3 in response to low affinity peptide was found to have contracted by day 5 post immunization and did not persist over the long term (175). These data mirror findings in the thymus suggesting a requirement for relatively strong TCR stimulation for efficient Treg generation (11).

To determine whether Tregs arose in the periphery in response to a pancreatic self-antigen, Wong et al. (176) utilized transgenic mice expressing the diabetogenic BDC2.5 TCR. Using TCR-based lineage tracing, the authors showed that conversion from the conventional to the regulatory T-cell compartment occurred only at very low frequencies both within the pancreas and its draining lymph node (176). In addressing the same question, the Ziegler laboratory (177) adoptively transferred naive CD4⁺ Foxp3⁻ GFP⁻ T cells from DO11.10 TCR-transgenic RAG^{-/-} bone marrow chimeric mice into RAG^{-/-} recipients expressing OVA under the control of the rat insulin promoter. In this system, any Treg occurring in recipient mice must have arisen from Foxp3⁻ donor cells. At 18 days post cell transfer, Tregs were observed in both the spleen and pancreatic lymph node, affording long-term protection against diabetes onset (177). The contrasting results observed between these reports are likely due to differences in the experimental systems utilized, including the presence of existing Treg populations in the BDC2.5 TCR study and the use of lymphopenic recipients in the DO11.10 TCR study. In this regard, it has recently been shown that thymus-derived and peripherally induced Tregs share a common peripheral niche, and that the former can outcompete the latter when both are present together (178).

TCR-transgenic systems have also been used to probe the differential characteristics of thymic-derived tTregs versus peripherally induced pTregs. By adoptively transferring OT-II TCR-transgenic CD4⁺ Foxp3⁻ cells into congenic hosts, the Shevach laboratory (179) demonstrated that unlike their thymic-derived counterparts, pTregs did not express the transcription factor Helios when induced with low-dose OVA. However, the validity of Helios as a marker of the tTreg population is now disputed (180–182). It has recently been proposed that tTregs and pTregs can be effectively distinguished based on their expression of the receptor

Neuropilin-1 (Nrp-1). To examine this possibility, two groups used TCR-transgenic mice on a RAG-deficient background, which generate progeny lacking tTregs. Yadav et al. (183) found that despite the lack of Tregs in the thymus, 1B3 TCR-transgenic RAG^{-/-} mice demonstrated the emergence of a peripheral population of CD4⁺ Foxp3⁺ cells within roughly 3 weeks of birth. Transcriptional analyses comparing these Tregs with those from 1B3 TCR-transgenic animals, which generate tTregs normally, showed lower expression of Nrp-1 by pTregs (183). Along these same lines, Weiss et al. (184) used DO11.10 TCR-transgenic RAG^{-/-} mice, which similarly lack tTregs, to show that pTregs generated in the gut mucosa in response to OVA antigen express lower levels of Nrp-1 mRNA than the total Tregs pool in wildtype BALB/c mice.

TCR-transgenic systems have also facilitated functional comparison of thymus-derived Tregs and peripherally induced Tregs. In one study, IL-10 differentiated DCs (DC10) were used to generate induced Tregs either *in vitro* or *in vivo* and these were directly compared with tTregs in a model of airway inflammation (185). The presence of the OT-II TCR transgene controlled for antigen specificity between the different Treg populations. Following adoptive transfer of pTregs or tTregs into recipients at day 46 post sensitization with OVA, pTregs were found to be superior at ameliorating airway hyper-reactivity and controlling IgE levels (185). More work is required to delineate the extent to which thymic-derived and peripherally induced Treg populations play distinct versus overlapping roles in immune regulation.

Bypassing Treg suppression *in vivo*

Given the importance of Tregs in controlling the activity of self-reactive T cells, there has been much interest in whether defects in Treg number or function might underlie the development of autoimmune diseases. Using a TCR-transgenic system in which TS1 TCR⁺ cells induce arthritis in response to PR8 HA expressed as a self-antigen, the Caton laboratory (186) identified a key role for the Treg TCR repertoire in determining the efficacy of suppression. As such, TS1 TCR⁺ Tregs suppressed the clonotypic Tconv that shared their specificity but failed to inhibit arthritis due to their inability to suppress bystander T cells of different TCR specificities (186). Along similar lines, Treg populations with a lower TCR diversity were shown to be poorer at controlling pathology in a model of graft-versus-host disease (187). Treg repertoire constraint may well underlie the development of autoimmune diseases in mice subjected to thymectomy

3 days following birth (188); pTregs can be detected in these animals (189) and have the potential to elicit regulatory function (190), yet they fail to prevent the emergence of autoimmune pathology. It is now known that Treg repertoires undergo ‘reshaping’ in the periphery (191, 192), likely reflecting encounter with self or environmental antigens. While Treg cohorts with a lower TCR diversity are also subject to peripheral ‘reshaping’, their lack of breadth ultimately results in a heightened risk of autoimmunity (193). Thus, conventional T-cell responses can escape appropriate control in cases where the TCR repertoire of the Treg population is not sufficiently diverse.

In the setting of diabetes, despite no obvious deficit of Treg numbers (reviewed in 194), we were keen to explore whether Tregs might be functionally impaired in diabetic animals. Using the DO11 x rip-OVA model of type-1 diabetes, we found that Tregs in diabetic animals appear to be fully functional, even showing somewhat enhanced suppressive capacity (78) (Fig. 4). We observed that conventional CD4⁺ T cells (Tconv) taken from either prediabetic or diseased animals induced diabetes with equivalent efficacy when transferred into Rip-mOVA RAG^{-/-} recipients but showed differing sensitivity to regulation. Co-transfer of Tregs with Tconv cells from prediabetic mice was highly successful at inhibiting diabetes but was ineffective at suppressing disease induced by Tconv cells from diabetic animals (78). These data suggested that during progression to overt diabetes, conventional T cells in this model develop resistance to Treg-mediated suppression. Similar results from

the Mathis laboratory have shown that Tregs from NOD mice show no defect in suppressive capacity compared to those from wildtype animals; rather, NOD Tconv are less prone to suppression than wildtype Tconv (195) consistent with earlier observations in this model (196, 197). Importantly, analysis of lymphocyte populations from Type 1 diabetes patients has confirmed that Tconv cells can exhibit resistance to Treg suppression in this setting (198, 199).

In the DO11 x rip-mOVA mouse model, levels of IL-21 mRNA increased in Tconv isolated from the draining pancreatic lymph node as this population acquired resistance to Treg suppression (78). IL-21 was shown to interfere with Treg suppression *in vitro*, and this was associated with inhibition of Tconv IL-2 production, thereby starving Tregs of a critical survival factor (200). Interestingly, IL-21 could substitute for the lack of IL-2 in the Tconv population, permitting their responses to proceed unimpaired (200). Other reported examples of cytokines capable of counteracting Treg suppression include IL-2 (201), IL-6 (202), IL-7 and IL-15 (203), IL-1 and IL-18 (204), and TNF α (205). Interestingly, although these cytokines utilize a variety of pathways to counteract suppression, IL-27 has also been shown to impair Treg homeostasis in a similar fashion to IL-21, by inhibiting IL-2 production *in vivo* (206). In other cases, cytokine signaling may simply substitute for CD28 costimulation, thus bypassing the need for Tconv to compete with constitutively CTLA-4-equipped Tregs for costimulatory ligands.

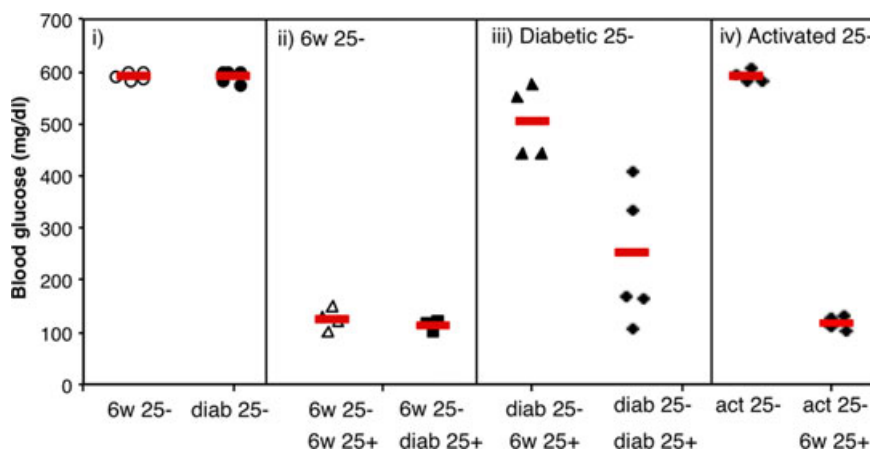


Fig. 4. Tregs from diabetic mice are functional *in vivo*, but conventional T cells show resistance to suppression. Conventional OVA-specific T cells from healthy 6-week-old or diabetic 12- to 13-week-old (diab) DO11 x rip-mOVA mice were adoptively transferred into rip-mOVA/RAG^{-/-} recipients. Where indicated, OVA-specific Tregs from healthy or diabetic animals were co-injected. (i–iii) Tregs from diabetic mice were highly effective at controlling diabetes; however, conventional T cells from diabetic mice showed resistance to suppression. (iv) OVA-specific T cells that had been activated for 4 days *in vitro* with 1 μ g/ml OVA peptide retained sensitivity to suppression, suggesting that resistance was not simply a consequence of activation. Figure adapted from Clough *et al.* (78).

Concluding remarks

The tools of modern immunology, most notably TCR transgenesis and fate-mapping reporters (e.g. Foxp3-GFP), have revolutionized our capacity to study Treg biology. The key feature of both approaches is that they facilitate study of Tregs in a physiologic setting *in vivo*. In particular, the serendipitous generation of animal models in which Tregs express transgenic TCRs has permitted analysis of cohorts of antigen-specific Tregs responding to immunized-antigen or tissue-expressed self-antigen in a whole animal. The lessons that we have learned from such analyses serve to underline the fundamental similarity between conventional and regulatory T cells, with both populations feeding off TCR

stimulation, CD28 costimulation, and cytokine signaling. A key difference appears to be the constitutively active state of the Treg population, epitomized by higher levels of proliferation that presumably reflect encounter with self-antigen. Given the remarkable proliferative capacity, site-specific accumulation, and dynamic repertoire reshaping that characterizes the Treg population in the periphery, it is somewhat incongruous that they were initially defined as anergic. A better understanding of the parameters that determine the size of the peripheral Treg niche and the division of labor between thymus-derived and peripherally derived populations should provide guidance on the best strategies to manipulate these cells clinically.

References

- Davis MM, Bjorkman PJ. T-cell antigen receptor genes and T-cell recognition. *Nature* 1988;**334**:395–402.
- Arstila TP, Casrouge A, Baron V, Even J, Kanellopoulos J, Kourilsky P. A direct estimate of the human alpha beta T cell receptor diversity. *Science* 1999;**286**:958–961.
- Mason D. A very high level of crossreactivity is an essential feature of the T-cell receptor. *Immunol Today* 1998;**19**:395–404.
- Sewell AK. Why must T cells be cross-reactive? *Nat Rev Immunol* 2012;**12**:669–677.
- Su LF, Kidd BA, Han A, Kotzin JJ, Davis MM. Virus-specific CD4(+) memory-phenotype T cells are abundant in unexposed adults. *Immunity* 2013;**38**:373–383.
- Sakaguchi S, et al. Immunologic tolerance maintained by CD25+ CD4+ regulatory T cells: their common role in controlling autoimmunity, tumor immunity, and transplantation tolerance. *Immunol Rev* 2001;**182**:18–32.
- Walker LS, Abbas AK. The enemy within: keeping self-reactive T cells at bay in the periphery. *Nat Rev Immunol* 2002;**2**:11–19.
- Graca L, Le Moine A, Cobbold SP, Waldmann H. Dominant transplantation tolerance. *Opinion. Curr Opin Immunol* 2003;**15**:499–506.
- Fontenot JD, Rudensky AY. A well adapted regulatory contrivance: regulatory T cell development and the forkhead family transcription factor Foxp3. *Nat Immunol* 2005;**6**:331–337.
- Schwartz RH. Natural regulatory T cells and self-tolerance. *Nat Immunol* 2005;**6**:327–330.
- Jordan MS, et al. Thymic selection of CD4+CD25+ regulatory T cells induced by an agonist self-peptide. *Nat Immunol* 2001;**2**:301–306.
- Apostolou I, Sarukhan A, Klein L, von Boehmer H. Origin of regulatory T cells with known specificity for antigen. *Nat Immunol* 2002;**3**:756–763.
- Walker LS, Chodos A, Eggena M, Dooms H, Abbas AK. Antigen-dependent proliferation of CD4+ CD25+ regulatory T cells *in vivo*. *J Exp Med* 2003;**198**:249–258.
- Itoh M, et al. Thymus and autoimmunity: production of CD25+CD4+ naturally anergic and suppressive T cells as a key function of the thymus in maintaining immunologic self-tolerance. *J Immunol* 1999;**162**:5317–5326.
- Kurts C, Heath WR, Carbone FR, Allison J, Miller JF, Kosaka H. Constitutive class I-restricted exogenous presentation of self antigens *in vivo*. *J Exp Med* 1996;**184**:923–930.
- Jolicœur C, Hanahan D, Smith KM. T-cell tolerance toward a transgenic beta-cell antigen and transcription of endogenous pancreatic genes in thymus. *Proc Natl Acad Sci USA* 1994;**91**:6707–6711.
- Kawahata K, et al. Generation of CD4(+)CD25(+) regulatory T cells from autoreactive T cells simultaneously with their negative selection in the thymus and from nonautoreactive T cells by endogenous TCR expression. *J Immunol* 2002;**168**:4399–4405.
- Leung MW, Shen S, Lafaille JJ. TCR-dependent differentiation of thymic Foxp3+ cells is limited to small clonal sizes. *J Exp Med* 2009;**206**:2121–2130.
- Bautista JL, et al. Intracloonal competition limits the fate determination of regulatory T cells in the thymus. *Nat Immunol* 2009;**10**:610–617.
- Romagnoli P, et al. The thymic niche does not limit development of the naturally diverse population of mouse regulatory T lymphocytes. *J Immunol* 2012;**189**:3831–3837.
- Takahashi T, et al. Immunologic self-tolerance maintained by CD25+CD4+ naturally anergic and suppressive T cells: induction of autoimmune disease by breaking their anergic/suppressive state. *Int Immunol* 1998;**10**:1969–1980.
- Kuniyasu Y, Takahashi T, Itoh M, Shimizu J, Toda G, Sakaguchi S. Naturally anergic and suppressive CD25(+)CD4(+) T cells as a functionally and phenotypically distinct immunoregulatory T cell subpopulation. *Int Immunol* 2000;**12**:1145–1155.
- Klein L, Khazaie K, von Boehmer H. *In vivo* dynamics of antigen-specific regulatory T cells not predicted from behavior *in vitro*. *Proc Natl Acad Sci USA* 2003;**100**:8886–8891.
- Yamazaki S, et al. Direct expansion of functional CD25+ CD4+ regulatory T cells by antigen-processing dendritic cells. *J Exp Med* 2003;**198**:235–247.
- Killebrew JR, Perdue N, Kwan A, Thornton AM, Shevach EM, Campbell DJ. A self-reactive TCR drives the development of Foxp3+ regulatory T cells that prevent autoimmune disease. *J Immunol* 2011;**187**:861–869.
- Fisson S, et al. Continuous activation of autoreactive CD4+ CD25+ regulatory T cells in the steady state. *J Exp Med* 2003;**198**:737–746.
- Rubtsov YP, et al. Stability of the regulatory T cell lineage *in vivo*. *Science* 2010;**329**:1667–1671.
- Hori S, Haury M, Lafaille JJ, Demengeot J, Coutinho A. Peripheral expansion of thymus-derived regulatory cells in anti-myelin basic protein T cell receptor transgenic mice. *Eur J Immunol* 2002;**32**:3729–3735.
- Walsh PT, et al. PTEN inhibits IL-2 receptor-mediated expansion of CD4+ CD25+ Tregs. *J Clin Invest* 2006;**116**:2521–2531.
- Zeng H, Yang K, Cloer C, Neale G, Vogel P, Chi H. mTORC1 couples immune signals and metabolic programming to establish T(reg)-cell function. *Nature* 2013;**499**:485–490.
- Ng WF, et al. Human CD4(+)CD25(+) cells: a naturally occurring population of regulatory T cells. *Blood* 2001;**98**:2736–2744.
- Taams LS, Smith J, Rustin MH, Salmon M, Poulter LW, Akbar AN. Human anergic/suppressive CD4(+)CD25(+) T cells: a highly differentiated and apoptosis-prone population. *Eur J Immunol* 2001;**31**:1122–1131.
- Vukmanovic-Stejic M, et al. The kinetics of CD4+Foxp3+ T cell accumulation during a human cutaneous antigen-specific memory response *in vivo*. *J Clin Invest* 2008;**118**:3639–3650.

34. Miyara M, et al. Functional delineation and differentiation dynamics of human CD4⁺ T cells expressing the Foxp3 transcription factor. *Immunity* 2009;**30**:899–911.
35. Peters JH, et al. Human secondary lymphoid organs typically contain polyclonally-activated proliferating regulatory T cells. *Blood* 2013;**122**:2213–2223.
36. Walker LS. CD4⁺ CD25⁺ Treg: divide and rule? *Immunology* 2004;**111**:129–137.
37. Suffia IJ, Reckling SK, Piccirillo CA, Goldszmid RS, Belkaid Y. Infected site-restricted Foxp3⁺ natural regulatory T cells are specific for microbial antigens. *J Exp Med* 2006;**203**:777–788.
38. Shafiani S, Tucker-Heard G, Kariyone A, Takatsu K, Urdahl KB. Pathogen-specific regulatory T cells delay the arrival of effector T cells in the lung during early tuberculosis. *J Exp Med* 2010;**207**:1409–1420.
39. Shafiani S, et al. Pathogen-specific Treg cells expand early during mycobacterium tuberculosis infection but are later eliminated in response to Interleukin-12. *Immunity* 2013;**38**:1261–1270.
40. Betts RJ, et al. Influenza A virus infection results in a robust, antigen-responsive, and widely disseminated Foxp3⁺ regulatory T cell response. *J Virol* 2012;**86**:2817–2825.
41. Schmitz I, et al. IL-21 restricts virus-driven Treg cell expansion in chronic LCMV infection. *PLoS Pathog* 2013;**9**:e1003362.
42. Veiga-Parga T, Sehrawat S, Rouse BT. Role of regulatory T cells during virus infection. *Immunol Rev* 2013;**255**:182–196.
43. Punksody GA, et al. Regulatory T-cell expansion during chronic viral infection is dependent on endogenous retroviral superantigens. *Proc Natl Acad Sci USA* 2011;**108**:3677–3682.
44. Taylor MD, et al. Early recruitment of natural CD4⁺ Foxp3⁺ Treg cells by infective larvae determines the outcome of filarial infection. *Eur J Immunol* 2009;**39**:192–206.
45. Redpath SA, et al. ICOS controls Foxp3(+) regulatory T-cell expansion, maintenance and IL-10 production during helminth infection. *Eur J Immunol* 2013;**43**:705–715.
46. Alexander T, et al. Foxp3⁺ Helios⁺ regulatory T cells are expanded in active systemic lupus erythematosus. *Ann Rheum Dis* 2013;**72**:1549–1558.
47. Herrath J, et al. The inflammatory milieu in the rheumatic joint reduces regulatory T-cell function. *Eur J Immunol* 2011;**41**:2279–2290.
48. O'Connor RA, Malpass KH, Anderton SM. The inflamed central nervous system drives the activation and rapid proliferation of Foxp3⁺ regulatory T cells. *J Immunol* 2007;**179**:958–966.
49. Herman AE, Freeman GJ, Mathis D, Benoist C. CD4⁺CD25⁺ T regulatory cells dependent on ICOS promote regulation of effector cells in the prediabetic lesion. *J Exp Med* 2004;**199**:1479–1489.
50. Haskins K, Portas M, Bergman B, Lafferty K, Bradley B. Pancreatic islet-specific T-cell clones from nonobese diabetic mice. *Proc Natl Acad Sci USA* 1989;**86**:8000–8004.
51. Chen Z, Herman AE, Matos M, Mathis D, Benoist C. Where CD4⁺CD25⁺ T reg cells impinge on autoimmune diabetes. *J Exp Med* 2005;**202**:1387–1397.
52. Tang Q, et al. Central role of defective interleukin-2 production in the triggering of islet autoimmune destruction. *Immunity* 2008;**28**:687–697.
53. Brode S, Raine T, Zaccone P, Cooke A. Cyclophosphamide-induced type-1 diabetes in the NOD mouse is associated with a reduction of CD4⁺CD25⁺Foxp3⁺ regulatory T cells. *J Immunol* 2006;**177**:6603–6612.
54. Lutsiak ME, Semnani RT, De Pascalis R, Kashmiri SV, Schlom J, Sabzevari H. Inhibition of CD4(+) 25+ T regulatory cell function implicated in enhanced immune response by low-dose cyclophosphamide. *Blood* 2005;**105**:2862–2868.
55. Nishikawa H, Sakaguchi S. Regulatory T cells in tumor immunity. *Int J Cancer* 2010;**127**:759–767.
56. Darrasse-Jeze G, et al. Tumor emergence is sensed by self-specific CD4hi memory Tregs that create a dominant tolerogenic environment for tumors in mice. *J Clin Invest* 2009;**119**:2648–2662.
57. Wainwright DA, Sengupta S, Han Y, Lesniak MS. Thymus-derived rather than tumor-induced regulatory T cells predominate in brain tumors. *Neuro Oncol* 2011;**13**:1308–1323.
58. Bui JD, Uppaluri R, Hsieh CS, Schreiber RD. Comparative analysis of regulatory and effector T cells in progressively growing versus rejecting tumors of similar origins. *Cancer Res* 2006;**66**:7301–7309.
59. Sainz-Perez A, Lim A, Lemercier B, Leclerc C. The T-cell receptor repertoire of tumor-infiltrating regulatory T lymphocytes is skewed toward public sequences. *Cancer Res* 2012;**72**:3557–3569.
60. Ghiringhelli F, et al. CD4⁺CD25⁺ regulatory T cells inhibit natural killer cell functions in a transforming growth factor-beta-dependent manner. *J Exp Med* 2005;**202**:1075–1085.
61. Terme M, et al. VEGFA-VEGFR pathway blockade inhibits tumor-induced regulatory T-cell proliferation in colorectal cancer. *Cancer Res* 2013;**73**:539–549.
62. Walker LS. Regulatory T cells overturned: the effectors fight back. *Immunology* 2009;**126**:466–474.
63. McCullagh P. The significance of immune suppression in normal self tolerance. *Immunol Rev* 1996;**149**:127–153.
64. McCullagh P. Interception of the development of self tolerance in fetal lambs. *Eur J Immunol* 1989;**19**:1387–1392.
65. Seddon B, Mason D. Peripheral autoantigen induces regulatory T cells that prevent autoimmunity. *J Exp Med* 1999;**189**:877–882.
66. Samy ET, Parker LA, Sharp CP, Tung KS. Continuous control of autoimmune disease by antigen-dependent polyclonal CD4⁺CD25⁺ regulatory T cells in the regional lymph node. *J Exp Med* 2005;**202**:771–781.
67. Wheeler KM, Samy ET, Tung KS. Cutting edge: normal regional lymph node enrichment of antigen-specific regulatory T cells with autoimmune disease-suppressive capacity. *J Immunol* 2009;**183**:7635–7638.
68. Gagnerault MC, Luan JJ, Lotton C, Lepault F. Pancreatic lymph nodes are required for priming of beta cell reactive T cells in NOD mice. *J Exp Med* 2002;**196**:369–377.
69. Scheinecker C, McHugh R, Shevach EM, Germain RN. Constitutive presentation of a natural tissue autoantigen exclusively by dendritic cells in the draining lymph node. *J Exp Med* 2002;**196**:1079–1090.
70. Zou T, Caton AJ, Koretzky GA, Kambayashi T. Dendritic cells induce regulatory T cell proliferation through antigen-dependent and -independent interactions. *J Immunol* 2010;**185**:2790–2799.
71. Suffner J, et al. Dendritic cells support homeostatic expansion of Foxp3⁺ regulatory T cells in Foxp3.LucIDTR mice. *J Immunol* 2010;**184**:1810–1820.
72. Ohnmacht C, et al. Constitutive ablation of dendritic cells breaks self-tolerance of CD4 T cells and results in spontaneous fatal autoimmunity. *J Exp Med* 2009;**206**:549–559.
73. Swee LK, Bosco N, Malissen B, Ceredig R, Rolink A. Expansion of peripheral naturally occurring T regulatory cells by Fms-like tyrosine kinase 3 ligand treatment. *Blood* 2009;**113**:6277–6287.
74. Darrasse-Jeze G, et al. Feedback control of regulatory T cell homeostasis by dendritic cells in vivo. *J Exp Med* 2009;**206**:1853–1862.
75. Kim JK, et al. Impact of the TCR signal on regulatory T cell homeostasis, function, and trafficking. *PLoS ONE* 2009;**4**:e6580.
76. Zou T, et al. Cutting edge: IL-2 signals determine the degree of TCR signaling necessary to support regulatory T cell proliferation in vivo. *J Immunol* 2012;**189**:28–32.
77. Nishio J, Feuerer M, Wong J, Mathis D, Benoist C. Anti-CD3 therapy permits regulatory T cells to surmount T cell receptor-specified peripheral niche constraints. *J Exp Med* 2010;**207**:1879–1889.
78. Clough LE, et al. Release from regulatory T cell-mediated suppression during the onset of tissue-specific autoimmunity is associated with elevated IL-21. *J Immunol* 2008;**180**:5393–5401.
79. Lathrop SK, Santacruz NA, Pham D, Luo J, Hsieh CS. Antigen-specific peripheral shaping of the natural regulatory T cell population. *J Exp Med* 2008;**205**:3105–3117.
80. Burzyn D, Benoist C, Mathis D. Regulatory T cells in nonlymphoid tissues. *Nat Immunol* 2013;**14**:1007–1013.
81. Feuerer M, et al. Lean, but not obese, fat is enriched for a unique population of regulatory T cells that affect metabolic parameters. *Nat Med* 2009;**15**:930–939.
82. Sathaliyawala T, et al. Distribution and compartmentalization of human circulating and tissue-resident memory T cell subsets. *Immunity* 2013;**38**:187–197.
83. Sadlack B, Merz H, Schorle H, Schimpl A, Feller AC, Horak I. Ulcerative colitis-like disease in mice with a disrupted interleukin-2 gene. *Cell* 1993;**75**:253–261.

84. Willerford DM, Chen J, Ferry JA, Davidson L, Ma A, Alt FW. Interleukin-2 receptor alpha chain regulates the size and content of the peripheral lymphoid compartment. *Immunity* 1995;**3**:521–530.
85. Suzuki H, et al. Deregulated T cell activation and autoimmunity in mice lacking interleukin-2 receptor beta. *Science* 1995;**268**:1472–1476.
86. Sharfe N, Dadi HK, Shahar M, Roifman CM. Human immune disorder arising from mutation of the alpha chain of the interleukin-2 receptor. *Proc Natl Acad Sci USA* 1997;**94**:3168–3171.
87. Kramer S, Schimpl A, Hunig T. Immunopathology of interleukin (IL) 2-deficient mice: thymus dependence and suppression by thymus-dependent cells with an intact IL-2 gene. *J Exp Med* 1995;**182**:1769–1776.
88. Malek TR, Yu A, Vincek V, Scibelli P, Kong L. CD4 regulatory T cells prevent lethal autoimmunity in IL-2Rbeta-deficient mice. Implications for the nonredundant function of IL-2. *Immunity* 2002;**17**:167–178.
89. Almeida AR, Legrand N, Papiernik M, Freitas AA. Homeostasis of peripheral CD4+ T cells: IL-2R alpha and IL-2 shape a population of regulatory cells that controls CD4+ T cell numbers. *J Immunol* 2002;**169**:4850–4860.
90. Fontenot JD, Rasmussen JP, Gavin MA, Rudensky AY. A function for interleukin 2 in Foxp3-expressing regulatory T cells. *Nat Immunol* 2005;**6**:1142–1151.
91. D'Cruz LM, Klein L. Development and function of agonist-induced CD25+Foxp3+ regulatory T cells in the absence of interleukin 2 signaling. *Nat Immunol* 2005;**6**:1152–1159.
92. Cheng G, Yu A, Dee MJ, Malek TR. IL-2R signaling is essential for functional maturation of regulatory T cells during thymic development. *J Immunol* 2013;**190**:1567–1575.
93. Lu LF, et al. Foxp3-dependent microRNA155 confers competitive fitness to regulatory T cells by targeting SOCS1 protein. *Immunity* 2009;**30**:80–91.
94. Pillemer BB, Xu H, Oriss TB, Qi Z, Ray A. Deficient SOCS3 expression in CD4+CD25+FoxP3+ regulatory T cells and SOCS3-mediated suppression of Treg function. *Eur J Immunol* 2007;**37**:2082–2089.
95. Almeida AR, Zaragoza B, Freitas AA. Indexation as a novel mechanism of lymphocyte homeostasis: the number of CD4+CD25+ regulatory T cells is indexed to the number of IL-2-producing cells. *J Immunol* 2006;**177**:192–200.
96. Setoguchi R, Hori S, Takahashi T, Sakaguchi S. Homeostatic maintenance of natural Foxp3(+) CD25(+) CD4(+) regulatory T cells by interleukin (IL)-2 and induction of autoimmune disease by IL-2 neutralization. *J Exp Med* 2005;**201**:723–735.
97. Pierson W, et al. Antiapoptotic Mcl-1 is critical for the survival and niche-filling capacity of Foxp3(+) regulatory T cells. *Nat Immunol* 2013;**14**:959–965.
98. Rabinovitch A, Suarez-Pinzon WL, Shapiro AM, Rajotte RV, Power R. Combination therapy with sirolimus and interleukin-2 prevents spontaneous and recurrent autoimmune diabetes in NOD mice. *Diabetes* 2002;**51**:638–645.
99. Grinberg-Bleyer Y, et al. IL-2 reverses established type 1 diabetes in NOD mice by a local effect on pancreatic regulatory T cells. *J Exp Med* 2010;**207**:1871–1878.
100. Saadoun D, et al. Regulatory T-cell responses to low-dose interleukin-2 in HCV-induced vasculitis. *N Engl J Med* 2011;**365**:2067–2077.
101. Koreth J, et al. Interleukin-2 and regulatory T cells in graft-versus-host disease. *N Engl J Med* 2011;**365**:2055–2066.
102. Bluestone JA. The yin and yang of interleukin-2-mediated immunotherapy. *N Engl J Med* 2011;**365**:2129–2131.
103. Matsuoka K, et al. Low-dose interleukin-2 therapy restores regulatory T cell homeostasis in patients with chronic graft-versus-host disease. *Sci Transl Med* 2013;**5**:179ra143.
104. Grinberg-Bleyer Y, et al. Pathogenic T cells have a paradoxical protective effect in murine autoimmune diabetes by boosting Tregs. *J Clin Invest* 2010;**120**:4558–4568.
105. O'Gorman WE, et al. The initial phase of an immune response functions to activate regulatory T cells. *J Immunol* 2009;**183**:332–339.
106. Delgoffe GM, et al. Stability and function of regulatory T cells is maintained by a neuropilin-1-semaphorin-4a axis. *Nature* 2013;**501**:252–256.
107. Salomon B, et al. B7/CD28 costimulation is essential for the homeostasis of the CD4+CD25+ immunoregulatory T cells that control autoimmune diabetes. *Immunity* 2000;**12**:431–440.
108. Sansom DM, Walker LS. The role of CD28 and cytotoxic T-lymphocyte antigen-4 (CTLA-4) in regulatory T-cell biology. *Immunol Rev* 2006;**212**:131–148.
109. Tang Q, et al. Cutting edge: CD28 controls peripheral homeostasis of CD4+CD25+ regulatory T cells. *J Immunol* 2003;**171**:3348–3352.
110. Gogishvili T, Luhder F, Goebbels S, Beer-Hammer S, Pfeffer K, Hunig T. Cell-intrinsic and -extrinsic control of Treg-cell homeostasis and function revealed by induced CD28 deletion. *Eur J Immunol* 2013;**43**:188–193.
111. Sanchez-Valdepenas C, Martin AG, Ramakrishnan P, Wallach D, Fresno M. NF-kappaB-inducing kinase is involved in the activation of the CD28 responsive element through phosphorylation of c-Rel and regulation of its transactivating activity. *J Immunol* 2006;**176**:4666–4674.
112. Murray SE. Cell-intrinsic role for NF-kappa B-inducing kinase in peripheral maintenance but not thymic development of Foxp3+ regulatory T cells in mice. *PLoS ONE* 2013;**8**:e76216.
113. Tivol EA, Borriello F, Schweitzer AN, Lynch WP, Bluestone JA, Sharpe AH. Loss of CTLA-4 leads to massive lymphoproliferation and fatal multiorgan tissue destruction, revealing a critical negative regulatory role of CTLA-4. *Immunity* 1995;**3**:541–547.
114. Waterhouse P, et al. Lymphoproliferative disorders with early lethality in mice deficient in Ctl-4. *Science* 1995;**270**:985–988.
115. Tai X, Van Laethem F, Sharpe AH, Singer A. Induction of autoimmune disease in CTLA-4-/- mice depends on a specific CD28 motif that is required for in vivo costimulation. *Proc Natl Acad Sci USA* 2007;**104**:13756–13761.
116. Schmidt EM, et al. CTLA-4 controls regulatory T cell peripheral homeostasis and is required for suppression of pancreatic islet autoimmunity. *J Immunol* 2009;**182**:274–282.
117. Wing K, et al. CTLA-4 control over Foxp3+ regulatory T cell function. *Science* 2008;**322**:271–275.
118. Quezada SA, Peggs KS, Curran MA, Allison JP. CTLA4 blockade and GM-CSF combination immunotherapy alters the intratumor balance of effector and regulatory T cells. *J Clin Invest* 2006;**116**:1935–1945.
119. Tang AL, et al. CTLA4 expression is an indicator and regulator of steady-state CD4+ FoxP3+ T cell homeostasis. *J Immunol* 2008;**181**:1806–1813.
120. Kavanagh B, et al. CTLA4 blockade expands FoxP3+ regulatory and activated effector CD4+ T cells in a dose-dependant fashion. *Blood* 2008;**112**:1175–1183.
121. Thompson CB, Allison JP. The emerging role of CTLA-4 as an immune attenuator. *Immunity* 1997;**7**:445–450.
122. Walker LS, Sansom DM. The emerging role of CTLA4 as a cell-extrinsic regulator of T cell responses. *Nat Rev Immunol* 2011;**11**:852–863.
123. Bour-Jordan H, Esensten JH, Martinez-Llordella M, Penaranda C, Stumpf M, Bluestone JA. Intrinsic and extrinsic control of peripheral T-cell tolerance by costimulatory molecules of the CD28/B7 family. *Immunol Rev* 2011;**241**:180–205.
124. Zhang R, Huynh A, Whitcher G, Chang J, Maltzman JS, Turka LA. An obligate cell-intrinsic function for CD28 in Tregs. *J Clin Invest* 2013;**123**:580–593.
125. Tai X, Cowan M, Feigenbaum L, Singer A. CD28 costimulation of developing thymocytes induces Foxp3 expression and regulatory T cell differentiation independently of interleukin 2. *Nat Immunol* 2005;**6**:152–162.
126. Bar-On L, Birnberg T, Kim KW, Jung S. Dendritic cell-restricted CD80/86 deficiency results in peripheral regulatory T-cell reduction but is not associated with lymphocyte hyperactivation. *Eur J Immunol* 2011;**41**:291–298.
127. Golovina TN, et al. CD28 costimulation is essential for human T regulatory expansion and function. *J Immunol* 2008;**181**:2855–2868.
128. Zheng Y, Manzotti CN, Liu M, Burke F, Mead KI, Sansom DM. CD86 and CD80 differentially modulate the suppressive function of human regulatory T cells. *J Immunol* 2004;**172**:2778–2784.
129. Chung DJ, et al. Indoleamine 2,3-dioxygenase-expressing mature human monocyte-derived dendritic cells expand potent autologous regulatory T cells. *Blood* 2009;**114**:555–563.
130. Pandiyan P, Lenardo MJ. The control of CD4+CD25+Foxp3+ regulatory T cell survival. *Biol Direct* 2008;**3**:6.

131. Tai X, et al. Foxp3 transcription factor is proapoptotic and lethal to developing regulatory T cells unless counterbalanced by cytokine survival signals. *Immunity* 2013;**38**:1116–1128.
132. Barron L, et al. Cutting edge: mechanisms of IL-2-dependent maintenance of functional regulatory T cells. *J Immunol* 2010;**185**:6426–6430.
133. Chouhnet CA, et al. A major role for Bim in regulatory T cell homeostasis. *J Immunol* 2011;**186**:156–163.
134. Tang Q, Bluestone JA. The Foxp3+ regulatory T cell: a jack of all trades, master of regulation. *Nat Immunol* 2008;**9**:239–244.
135. Vignali DA, Collison LW, Workman CJ. How regulatory T cells work. *Nat Rev Immunol* 2008;**8**:523–532.
136. Gondek DC, Lu LF, Quezada SA, Sakaguchi S, Noelle RJ. Cutting edge: contact-mediated suppression by CD4+CD25+ regulatory cells involves a granzyme B-dependent, perforin-independent mechanism. *J Immunol* 2005;**174**:1783–1786.
137. Deaglio S, et al. Adenosine generation catalyzed by CD39 and CD73 expressed on regulatory T cells mediates immune suppression. *J Exp Med* 2007;**204**:1257–1265.
138. Takahashi T, et al. Immunologic self-tolerance maintained by CD25(+)CD4(+) regulatory T cells constitutively expressing cytotoxic T lymphocyte-associated antigen 4. *J Exp Med* 2000;**192**:303–310.
139. Read S, Malmstrom V, Powrie F. Cytotoxic T lymphocyte-associated antigen 4 plays an essential role in the function of CD25(+)CD4(+) regulatory cells that control intestinal inflammation. *J Exp Med* 2000;**192**:295–302.
140. Powrie F, Carlino J, Leach MW, Mauze S, Coffman RL. A critical role for transforming growth factor-beta but not interleukin 4 in the suppression of T helper type 1-mediated colitis by CD45RB(low) CD4+ T cells. *J Exp Med* 1996;**183**:2669–2674.
141. Tang Q, Boden EK, Henriksen KJ, Bour-Jordan H, Bi M, Bluestone JA. Distinct roles of CTLA-4 and TGF-beta in CD4+CD25+ regulatory T cell function. *Eur J Immunol* 2004;**34**:2996–3005.
142. Asseman C, Mauze S, Leach MW, Coffman RL, Powrie F. An essential role for interleukin 10 in the function of regulatory T cells that inhibit intestinal inflammation. *J Exp Med* 1999;**190**:995–1004.
143. Collison LW, et al. The inhibitory cytokine IL-35 contributes to regulatory T-cell function. *Nature* 2007;**450**:566–569.
144. Barthlott T, et al. CD25+ CD4+ T cells compete with naive CD4+ T cells for IL-2 and exploit it for the induction of IL-10 production. *Int Immunol* 2005;**17**:279–288.
145. Pandiyan P, Zheng L, Ishihara S, Reed J, Lenardo MJ. CD4(+)CD25(+)Foxp3(+) regulatory T cells induce cytokine deprivation-mediated apoptosis of effector CD4(+) T cells. *Nat Immunol* 2007;**8**:1353–1362.
146. Sitrin J, Ring A, Garcia KC, Benoist C, Mathis D. Regulatory T cells control NK cells in an insulinitic lesion by depriving them of IL-2. *J Exp Med* 2013;**210**:1153–1165.
147. Cobbold SP, et al. Infectious tolerance via the consumption of essential amino acids and mTOR signaling. *Proc Natl Acad Sci USA* 2009;**106**:12055–12060.
148. Walker LS. Treg and CTLA-4: two intertwining pathways to immune tolerance. *J Autoimmun* 2013;**45**:49–57.
149. Metzler B, Burkhardt C, Wraith DC. Phenotypic analysis of CTLA-4 and CD28 expression during transient peptide-induced T cell activation in vivo. *Int Immunol* 1999;**11**:667–675.
150. Greenwald RJ, Boussiotis VA, Lorsch RB, Abbas AK, Sharpe AH. CTLA-4 regulates induction of anergy in vivo. *Immunity* 2001;**14**:145–155.
151. Ise W, et al. CTLA-4 suppresses the pathogenicity of self antigen-specific T cells by cell-intrinsic and cell-extrinsic mechanisms. *Nat Immunol* 2010;**11**:129–135.
152. Grohmann U, et al. CTLA-4-Ig regulates tryptophan catabolism in vivo. *Nat Immunol* 2002;**3**:1097–1101.
153. Fallarino F, et al. Modulation of tryptophan catabolism by regulatory T cells. *Nat Immunol* 2003;**4**:1206–1212.
154. Manches O, et al. HIV-activated human plasmacytoid DCs induce Tregs through an indoleamine 2,3-dioxygenase-dependent mechanism. *J Clin Invest* 2008;**118**:3431–3439.
155. Davis PM, Nadler SG, Stesko DK, Suchard SJ. Abatacept modulates human dendritic cell-stimulated T-cell proliferation and effector function independent of IDO induction. *Clin Immunol* 2008;**126**:38–47.
156. Carman JA, et al. Abatacept does not induce direct gene expression changes in antigen-presenting cells. *J Clin Immunol* 2009;**29**:479–489.
157. Cederbom L, Hall H, Ivars F. CD4+CD25+ regulatory T cells down-regulate co-stimulatory molecules on antigen-presenting cells. *Eur J Immunol* 2000;**30**:1538–1543.
158. Misra N, Bayry J, Lacroix-Desmazes S, Kazatchkine MD, Kaveri SV. Cutting edge: human CD4+CD25+ T cells restrain the maturation and antigen-presenting function of dendritic cells. *J Immunol* 2004;**172**:4676–4680.
159. Oderup C, Cederbom L, Makowska A, Cilio CM, Ivars F. Cytotoxic T lymphocyte antigen-4-dependent down-modulation of costimulatory molecules on dendritic cells in CD4+ CD25+ regulatory T-cell-mediated suppression. *Immunology* 2006;**118**:240–249.
160. Onishi Y, Fehervari Z, Yamaguchi T, Sakaguchi S. Foxp3+ natural regulatory T cells preferentially form aggregates on dendritic cells in vitro and actively inhibit their maturation. *Proc Natl Acad Sci USA* 2008;**105**:10113–10118.
161. Serra P, et al. CD40 ligation releases immature dendritic cells from the control of regulatory CD4+CD25+ T cells. *Immunity* 2003;**19**:877–889.
162. Schildknecht A, et al. FoxP3+ regulatory T cells essentially contribute to peripheral CD8+ T-cell tolerance induced by steady-state dendritic cells. *Proc Natl Acad Sci USA* 2010;**107**:199–203.
163. Kastenmuller W, et al. Regulatory T cells selectively control CD8+ T cell effector pool size via IL-2 restriction. *J Immunol* 2011;**187**:3186–3197.
164. Qureshi OS, et al. Trans-endocytosis of CD80 and CD86: a molecular basis for the cell-extrinsic function of CTLA-4. *Science* 2011;**332**:600–603.
165. Corse E, Allison JP. Cutting edge: CTLA-4 on effector T cells inhibits in trans. *J Immunol* 2012;**189**:1123–1127.
166. Wang CJ, et al. Cutting edge: cell-extrinsic immune regulation by ctla-4 expressed on conventional T cells. *J Immunol* 2012;**189**:1118–1122.
167. Ishigame H, et al. Excessive Th1 responses due to the absence of TGF-beta signaling cause autoimmune diabetes and dysregulated Treg cell homeostasis. *Proc Natl Acad Sci USA* 2013;**110**:6961–6966.
168. Sledzinska A, et al. TGF-beta signalling is required for CD4(+) T cell homeostasis but dispensable for regulatory T cell function. *PLoS Biol* 2013;**11**:e1001674.
169. Green EA, Gorelik L, McGregor CM, Tran EH, Flavell RA. CD4+CD25+ T regulatory cells control anti-islet CD8+ T cells through TGF-beta-TGF-beta receptor interactions in type 1 diabetes. *Proc Natl Acad Sci USA* 2003;**100**:10878–10883.
170. Fahlen L, et al. T cells that cannot respond to TGF-beta escape control by CD4(+)CD25(+) regulatory T cells. *J Exp Med* 2005;**201**:737–746.
171. Sullivan TJ, et al. Lack of a role for transforming growth factor-beta in cytotoxic T lymphocyte antigen-4-mediated inhibition of T cell activation. *Proc Natl Acad Sci USA* 2001;**98**:2587–2592.
172. Baecher-Allan C, Viglietta V, Hafler DA. Inhibition of human CD4(+)CD25(high) regulatory T cell function. *J Immunol* 2002;**169**:6210–6217.
173. George TC, Bilsborough J, Viney JL, Normant AM. High antigen dose and activated dendritic cells enable Th cells to escape regulatory T cell-mediated suppression in vitro. *Eur J Immunol* 2003;**33**:502–511.
174. Abbas AK, et al. Regulatory T cells: recommendations to simplify the nomenclature. *Nat Immunol* 2013;**14**:307–308.
175. Gottschalk RA, Corse E, Allison JP. TCR ligand density and affinity determine peripheral induction of Foxp3 in vivo. *J Exp Med* 2010;**207**:1701–1711.
176. Wong J, Mathis D, Benoist C. TCR-based lineage tracing: no evidence for conversion of conventional into regulatory T cells in response to a natural self-antigen in pancreatic islets. *J Exp Med* 2007;**204**:2039–2045.
177. Thompson LJ, Valladao AC, Ziegler SF. Cutting edge: de novo induction of functional Foxp3+ regulatory CD4 T cells in response to tissue-restricted self antigen. *J Immunol* 2011;**186**:4551–4555.
178. Huang YJ, et al. Induced and thymus-derived Foxp3 regulatory T cells share a common niche. *Eur J Immunol* 2013; doi:10.1002/eji.201343463

179. Thornton AM, et al. Expression of Helios, an Ikaros transcription factor family member, differentiates thymic-derived from peripherally induced Foxp3+ T regulatory cells. *J Immunol* 2010;**184**:3433–3441.
180. Verhagen J, Wraith DC. Comment on “Expression of Helios, an Ikaros transcription factor family member, differentiates thymic-derived from peripherally induced Foxp3+ T regulatory cells”. *J Immunol* 2010;**185**:7129; author reply 7130.
181. Akimova T, Beier UH, Wang L, Levine MH, Hancock WW. Helios expression is a marker of T cell activation and proliferation. *PLoS ONE* 2011;**6**:e24226.
182. Gottschalk RA, Corse E, Allison JP. Expression of Helios in peripherally induced Foxp3+ regulatory T cells. *J Immunol* 2012;**188**:976–980.
183. Yadav M, et al. Neuropilin-1 distinguishes natural and inducible regulatory T cells among regulatory T cell subsets in vivo. *J Exp Med* 2012;**209**:1713–1722, S1711–1719.
184. Weiss JM, et al. Neuropilin 1 is expressed on thymus-derived natural regulatory T cells, but not mucosa-generated induced Foxp3+ T reg cells. *J Exp Med* 2012;**209**:1723–1742, S1721.
185. Huang H, Ma Y, Dawicki W, Zhang X, Gordon JR. Comparison of induced versus natural regulatory T cells of the same TCR specificity for induction of tolerance to an environmental antigen. *J Immunol* 2013;**191**:1136–1143.
186. Oh S, et al. Requirement for diverse TCR specificities determines regulatory T cell activity in a mouse model of autoimmune arthritis. *J Immunol* 2012;**188**:4171–4180.
187. Fohse L, et al. High TCR diversity ensures optimal function and homeostasis of Foxp3+ regulatory T cells. *Eur J Immunol* 2011;**41**:3101–3113.
188. Asano M, Toda M, Sakaguchi N, Sakaguchi S. Autoimmune disease as a consequence of developmental abnormality of a T cell subpopulation. *J Exp Med* 1996;**184**:387–396.
189. Dujardin HC, Burlen-Defranoux O, Boucontet L, Vieira P, Cumano A, Bandeira A. Regulatory potential and control of Foxp3 expression in newborn CD4+ T cells. *Proc Natl Acad Sci USA* 2004;**101**:14473–14478.
190. Samy ET, Wheeler KM, Roper RJ, Teuscher C, Tung KS. Cutting edge: Autoimmune disease in day 3 thymectomized mice is actively controlled by endogenous disease-specific regulatory T cells. *J Immunol* 2008;**180**:4366–4370.
191. Hsieh CS, Zheng Y, Liang Y, Fontenot JD, Rudensky AY. An intersection between the self-reactive regulatory and nonregulatory T cell receptor repertoires. *Nat Immunol* 2006;**7**:401–410.
192. Wong J, Obst R, Correia-Neves M, Losyev G, Mathis D, Benoist C. Adaptation of TCR repertoires to self-peptides in regulatory and nonregulatory CD4+ T cells. *J Immunol* 2007;**178**:7032–7041.
193. Adeegbe D, Matsutani T, Yang J, Altman NH, Malek TR. CD4(+) CD25(+) Foxp3(+) T regulatory cells with limited TCR diversity in control of autoimmunity. *J Immunol* 2010;**184**:56–66.
194. Walker LS. Natural Treg in autoimmune diabetes: all present and correct? *Exp Opin Biol Ther* 2008;**8**:1691–1703.
195. D’Alise AM, et al. The defect in T-cell regulation in NOD mice is an effect on the T-cell effectors. *Proc Natl Acad Sci USA* 2008;**105**:19857–19862.
196. Gregori S, Giarratana N, Smiroldo S, Adorini L. Dynamics of pathogenic and suppressor T cells in autoimmune diabetes development. *J Immunol* 2003;**171**:4040–4047.
197. You S, et al. Autoimmune diabetes onset results from qualitative rather than quantitative age-dependent changes in pathogenic T-cells. *Diabetes* 2005;**54**:1415–1422.
198. Lawson JM, et al. Increased resistance to CD4+CD25hi regulatory T cell-mediated suppression in patients with type 1 diabetes. *Clin Exp Immunol* 2008;**154**:353–359.
199. Schneider A, Rieck M, Sanda S, Pihoker C, Greenbaum C, Buckner JH. The effector T cells of diabetic subjects are resistant to regulation via CD4+ FOXP3+ regulatory T cells. *J Immunol* 2008;**181**:7350–7355.
200. Attridge K, et al. IL-21 inhibits T cell IL-2 production and impairs Treg homeostasis. *Blood* 2012;**119**:4656–4664.
201. Thornton AM, Shevach EM. CD4+CD25+ immunoregulatory T cells suppress polyclonal T cell activation in vitro by inhibiting interleukin 2 production. *J Exp Med* 1998;**188**:287–296.
202. Pasare C, Medzhitov R. Toll pathway-dependent blockade of CD4+CD25+ T cell-mediated suppression by dendritic cells. *Science* 2003;**299**:1033–1036.
203. Ruprecht CR, et al. Coexpression of CD25 and CD27 identifies FoxP3+ regulatory T cells in inflamed synovia. *J Exp Med* 2005;**201**:1793–1803.
204. O’Sullivan BJ, et al. IL-1 beta breaks tolerance through expansion of CD25+ effector T cells. *J Immunol* 2006;**176**:7278–7287.
205. Chen X, Baumel M, Mannel DN, Howard OM, Oppenheim JJ. Interaction of TNF with TNF receptor type 2 promotes expansion and function of mouse CD4+CD25+ T regulatory cells. *J Immunol* 2007;**179**:154–161.
206. Wojno ED, et al. A role for IL-27 in limiting T regulatory cell populations. *J Immunol* 2011;**187**:266–273.