



Packard, C. J., Young, R., Ross, K., Ford, I., Ambegaonkar, B. M., Brudi, P. and McCowan, C. (2017) Modelling total coronary heart disease burden and long-term benefit of cholesterol lowering in middle aged men with and without a history of cardiovascular disease. *European Heart Journal: Quality of Care and Clinical Outcomes*, (doi:[10.1093/ehjqcco/qcx012](https://doi.org/10.1093/ehjqcco/qcx012))

This is the author's final accepted version.

There may be differences between this version and the published version. You are advised to consult the publisher's version if you wish to cite from it.

<http://eprints.gla.ac.uk/140823/>

Deposited on: 10 May 2017

Enlighten – Research publications by members of the University of Glasgow  
<http://eprints.gla.ac.uk33640>

1  
2  
3  
4  
5  
6  
7  
8  
9  
10  
11  
12  
13  
14  
15  
16  
17  
18  
19  
20  
21  
22  
23  
24  
25  
26  
27  
28  
29  
30  
31  
32  
33  
34  
35  
36  
37  
38  
39  
40  
41  
42  
43  
44  
45  
46  
47  
48  
49  
50  
51  
52  
53  
54  
55  
56  
57  
58  
59  
60  
61  
62  
63  
64  
65

**Modelling total CHD burden and long-term benefit of cholesterol lowering in middle aged men with and without a history of cardiovascular disease.**

**Chris J Packard<sup>1</sup>, Robin Young<sup>2</sup>, Kevin Ross<sup>2</sup>, Ian Ford<sup>2</sup>, Baishali Ambegaonkar<sup>3</sup>, Philippe Brudi<sup>3</sup>, Colin McCowan<sup>2</sup>.**

**Robertson Centre for Biostatistics, University of Glasgow, Glasgow, Scotland, UK G12 8QQ**

**<sup>1</sup>College of Medical, Veterinary and Life Sciences; <sup>2</sup>Robertson Centre for Biostatistics, University of Glasgow, Glasgow, Scotland; <sup>3</sup>Merck, Sharpe & Dohme Ltd, Kenilworth, New Jersey USA**

**Corresponding author:-**

**Professor Chris J Packard  
McGregor Building, Room 203, Floor 2  
Western Infirmary  
University of Glasgow G12 8QQ  
Telephone (44) 7788447576  
Email: [chris.j.packard@gmail.com](mailto:chris.j.packard@gmail.com)**

## Abstract

### *Background*

Cumulative CHD events over 20 years were examined in men screened for, and in those randomised to, the West of Scotland Coronary Prevention Study.

### *Methods and Results*

Record linkage provided CHD-related events and days in hospital for the 80,230 screenees, including the randomised cohort of 6,595 men. Risk factors were determined at baseline, and disease burden assessed for groups defined by cholesterol. Effects of cholesterol lowering were modelled from differences between groups, and from the treatment arms of the trial. Over 20 years, those without a history of CHD (n=61,211) had 23.0 events per 100 subjects in the lowest cholesterol group (mean 4.0mmol/l) and 65.1 per 100 in the highest (8.8mmol/l). Corresponding days in hospital were 167.2 to 435.4 per 100 subjects. Analogous figures for men with a CHD history (n=8,570) were 77.3 to 141.7 events per 100 and 526.1 to 936.7 hospital days per 100.

Lowering cholesterol by about 1.0mmol/l in men with average cholesterol and no CHD was predicted to be associated with 8.9 fewer events and a saving of 56.0 hospital days per 100. In those with CHD this difference gave, depending on starting level, 26.8 to 36.5 fewer events and savings of 158.2 to 247.3 hospital days per 100 subjects.

Comparison of cumulative events in 45-54 versus 55-64 year olds in the trial revealed greater benefit from intervention in the younger decade.

### *Conclusion*

Long-term, longitudinal data reveal the considerable CHD burden in middle-aged men and indicate substantial clinical benefits from both moderate and aggressive cholesterol lowering.

*Keywords* – cholesterol, data linkage, myocardial infarction, clinical trial

## Introduction

1  
2  
3  
4 LDL lowering is a cornerstone recommendation in CHD prevention guidelines [1, 2] with meta-  
5  
6 analyses [3, 4] and cost-effectiveness studies [5-7] confirming its clinical and economic utility in  
7  
8 secondary prevention and high-risk primary prevention. Population benefit assessments are based  
9  
10 necessarily on models generated with tools such as the Framingham risk equation [8], and the  
11  
12 outcome of clinical trials that are limited (often to 3 to 5 years) in duration relative to the  
13  
14 decades-long course of the disease. Also, traditional indices of clinical utility such as number-  
15  
16 needed-to-treat [9] are probabilities based on the first major event and do not take into account  
17  
18 the fact that patients often suffer multiple episodes of CHD over a number of years. Overall, as  
19  
20 highlighted again in IMPROVE-IT [10] and HOPE-3 [11], these approaches can lead to a  
21  
22  
23 substantial underestimate of the full clinical and economic impact of therapy.  
24  
25  
26

27  
28  
29  
30 A number of trials have reported extended follow up [12-15], and the present study takes  
31  
32 advantage of the availability of comprehensive, longitudinal electronic health records not only for  
33  
34 the subjects included in the West of Scotland Coronary Prevention Study (WOSCOPS) but also  
35  
36 for the population of approximately 80,000 45 to 64-year-old men who were screened [16].  
37  
38

39  
40 Based on an evaluation of total CHD burden, we modelled the benefits of having lower LDL in a  
41  
42 primary prevention setting which is still an area of contention [17-19], and since the screened  
43  
44 population included those with a history of CHD, we assessed also the impact of reducing total  
45  
46 cholesterol levels in a secondary prevention setting.  
47  
48  
49  
50  
51  
52  
53  
54  
55  
56  
57  
58  
59  
60  
61  
62  
63  
64  
65

## Methods

1  
2  
3 Recruitment for WOSCOPS [16, 20, 21] involved inviting men aged 45 to 64 years from  
4 approximately 120 family practices to visit a screening clinic. Between September 1989 and July  
5  
6 1991, 80,230 attended Study Visit 1 at which risk factors were assessed including cholesterol,  
7  
8 blood pressure and smoking habit [16]. Personal history of CHD was evaluated by questionnaire  
9  
10 based on patient recall (specifically, whether a doctor had informed the subject that they suffered  
11  
12 from chest pain due to angina or had had a heart attack). Those with total cholesterol >6.5mmol/l  
13  
14 were evaluated in 3 subsequent visits and 6,595 men with LDL cholesterol (LDLc) 4.0 to 6.0  
15  
16 mmol/l but no history of myocardial infarction were randomized to pravastatin 40mg/d or  
17  
18 placebo. Followup was for a mean of 4.9 years with final trial visits held in May 1995. The  
19  
20 outcome was a risk reduction of about one-third in a range of cardiovascular endpoints [21].  
21  
22  
23  
24  
25  
26  
27  
28  
29

30 Use of lipid-lowering therapy during the first 5 years after the trial ended was monitored by  
31  
32 review of GP records. In the original pravastatin and placebo groups respectively, 28.6% and  
33  
34 24.3% at 1 year, 33.6% and 29.4% at 3 years, and 38.7% and 35.2% at 5 years post-trial were on  
35  
36 statins [12]. No further information on statin treatment was available for the trial participants  
37  
38 after this point (i.e. 10 years post randomisation). For the screened population, no information on  
39  
40 use of lipid-lowering treatment was available across the whole of the 20-year observation period.  
41  
42  
43  
44  
45  
46

47 Individual-level data were extracted from national electronic hospital discharge records and death  
48  
49 registries [22] to provide numbers of clinical events and length of hospitalisations for both the  
50  
51 WOSCOPS randomised cohort, and the screenees who did not enter the trial. Events were  
52  
53 classified using International Classification of Diseases (ICD) codes. Hospital duration for any  
54  
55 single event was truncated at 182 days. No limit was placed on the number of events per subject.  
56  
57  
58  
59  
60  
61  
62  
63  
64  
65

1 The original trial was approved by the Ethics committees of the University of Glasgow and  
2 participating health boards and the long-term follow-up and associated record linkage by the  
3  
4  
5 Ethics committee of the Royal Infirmary, Glasgow and the Privacy Advisory Committee of the  
6  
7 National Health Service for Scotland.  
8  
9

10  
11  
12 Association of **total** cholesterol levels with hospital admissions for CHD causes (ICD9 codes  
13  
14 410-414 and ICD10 codes I20-I25) was assessed over the observation **period (i.e. until October**  
15  
16 **2011)** or until death. We estimated the benefit of cholesterol reduction by comparing differences  
17  
18  
19 in cumulative events between groups categorised by baseline **total** cholesterol level.  
20  
21  
22  
23

24 An analysis was also undertaken to evaluate the relative benefit of initiating cholesterol lowering  
25  
26 at age 45 to 54 compared to 55 to 64 years in the WOSCOPS randomised cohort, and separately  
27  
28  
29 in screenee groups with **total** cholesterol levels similar to those seen in the treatment arms of the  
30  
31  
32 trial. The 'QRISK' tool [5,23] ([www.qrisk.org](http://www.qrisk.org)) was used to estimate 10-year risk of a CVD event  
33  
34 for males aged 50 and 60 years (i.e. the mean ages in the two age decades) with the same risk  
35  
36 factor levels as the WOSCOPS randomised subjects at baseline [21] (**total** cholesterol :HDL  
37  
38 cholesterol ratio of 5.0, systolic blood pressure 137mmHg, height 173cm, weight 77.5kg, non-  
39  
40  
41 smoker or moderate smoker).  
42  
43  
44  
45

#### 46 *Statistical methods*

47

48 Total CHD burden for each individual was the cumulative number of CHD hospitalisation events  
49  
50  
51 and the total number of days spent in hospital attributed to CHD causes. This was analysed  
52  
53  
54 **separately** for (i) the WOSCOPS randomised cohort with its placebo and pravastatin arms, (ii)  
55  
56 WOSCOPS screenees without a history of CHD at baseline ('primary prevention' setting), and  
57  
58 (iii) WOSCOPS screenees with a history of CHD ('secondary prevention' setting). The last two  
59  
60  
61  
62  
63  
64  
65

1 groups were divided into five categories (P1 to P5 and S1 to S5 respectively) based on total  
2 cholesterol at screening -  $\leq 4.5$ , 4.5-5.5,  $>5.5-6.5$ ,  $>6.5-8.0$  and  $>8.0$  mmol/l. These intervals  
3  
4 were chosen so that, where possible, mean cholesterol levels differed by increments of  
5  
6 approximately 1.0mmol/l, and hence our findings could be related to the commonly used metric  
7  
8 of risk reduction per mmol/l change [3, 4]. Incidence of the first CHD event (death or  
9  
10 hospitalisation for a CHD related reason), the cumulative number of hospital admissions for  
11  
12 CHD (events and length of stay in days) and the total number of deaths were obtained for each  
13  
14 cholesterol group. Risk ratios were derived by quasi-Poisson regression (which allows for over-  
15  
16 dispersion in the data) using the lowest total cholesterol category as referent and adjusting for  
17  
18 other major risk factors (age, blood pressure, smoking status).  
19  
20  
21  
22  
23  
24 Total event rates, expressed per 100 subjects over 20 years, were compared between categories of  
25  
26 total cholesterol level to obtain relative risks and differences in number of CHD hospitalisations  
27  
28 and hospital days attributed to CHD causes per nominal 1.0mmol/l change. The effects of more  
29  
30 aggressive cholesterol reductions were estimated by comparing groups that differed by 2.0mmol/l  
31  
32 or more. Groups were also characterised by the percentage of subjects experiencing CHD death,  
33  
34 multiple CHD events or a single CHD events (see supplementary tables).  
35  
36  
37  
38  
39 All statistical analyses were conducted using R version 3.1.2.  
40  
41  
42  
43  
44  
45  
46  
47  
48  
49  
50  
51  
52  
53  
54  
55  
56  
57  
58  
59  
60  
61  
62  
63  
64  
65

## Results

A total of 80,230 men attended Study Visit 1 and individual-level record linkage-based follow-up was available for 76,376 (95.2%). Over the observation period (which ranged from 20 to 22 years), there were 35,690 hospitalisations for CHD causes in 15,398 screenees. Once those with incomplete Visit 1 information were excluded, total CHD burden data were available for 61,211 screenees with no prior history of CHD and 8,570 screenees with a history of CHD. (Note that the analyses of screenees does not include subjects randomised to the trial).

### *Plasma cholesterol and total CHD burden.*

Over 20 years follow up, for all screenees there was a positive relationship between total plasma cholesterol and incidence of a first event of CHD hospitalisation or CHD death for both age decades (Figure 1A).

In screenees with no history of CHD (Figure 1B) the rate in the older compared to the younger decade was about 29% higher, and when these subjects, using the entire age range, were grouped by total cholesterol (P1 to P5) there was a 2.7-fold increase in adjusted risk comparing the lowest to highest levels (Table 1). The cumulative number of events per 100 subjects rose from 23.0 to 65.1, and the corresponding number of days of hospitalisation for CHD causes increased from 167.2 to 435.4 per 100 subjects.

In screenees with a history of CHD there was a positive association between first incidence of a subsequent event and total cholesterol but little difference between the two age decades (Figure 1C). In Table 1, the adjusted risk ratio virtually doubled across the cholesterol categories S1 to S4 but did not appear to increase further in the S5 group. In general, cumulative event rates were 2-3 fold higher compared to those seen in screenees without a CHD history. Across the



1 cholesterol range total CHD burden was 77.3 to 141.7 events per 100 subjects, and the number of  
2 days in hospital for CHD causes was 526 to about 1,000 per 100 subjects.  
3  
4  
5  
6

7 *Benefit of cholesterol lowering in a 'primary prevention' setting*  
8

9 Differences in cumulative events and hospital days attributable to CHD for groups of interest are  
10 presented in Table 2. In taking this approach to modelling the impact of lowering cholesterol, it is  
11 assumed that any difference is attributable solely to variation in LDLc, and that the result is a  
12 reasonable estimate of the benefit of using pharmacological intervention.  
13  
14  
15  
16  
17

18 Reduction in total CHD burden was predicted to be substantial in men with the highest  
19 cholesterol levels (P5) who were subject to moderate (25%) or intensive (54%) LDL lowering  
20 (Table 2). Group P4 was moderately hypercholesterolaemic with a mean cholesterol similar to  
21 that in the placebo arm of WOSCOPS (i.e 7.0mmol/l [21]). Comparing event rates in P4 with  
22 those for P3 (with its mean cholesterol of 6.0mmol/l) it can be seen that a nominal 1.0mmol/l  
23 difference was associated with a 19.4% lower risk of CHD, 10.2 fewer events and 61.3 fewer  
24 days in hospital per 100 subjects. The analogous data from the placebo and pravastatin arms in  
25 the trial (where there was a 1.1 mmol/l difference in LDLc during the formal 5-year intervention)  
26 were a relative risk reduction of 21% over 20 years of follow up [Table 2 in ref 14] and a  
27 difference in cumulative CHD events of 10.8 per 100 subjects [for non-day case admissions;  
28 Table 3 in ref 14]. The compatibility, for approximately the same degree of cholesterol lowering,  
29 of the trial results with those from modelling screenees lends support to our general approach.  
30  
31  
32  
33  
34  
35  
36  
37  
38  
39  
40  
41  
42  
43  
44  
45  
46  
47  
48  
49  
50

51 In other scenarios presented in Table 2, it can be seen that even at the population average total  
52 cholesterol (in group P3), over 20 years, achievable decreases in cholesterol of the order of 0.9 to  
53 2.0 mmol/l were predicted to prevent respectively 8.9 to 19.4 events and 56.0 to 121.1 days in  
54 hospital per 100 subjects. The impact of having lower cholesterol expressed per subject rather  
55  
56  
57  
58  
59  
60  
61  
62  
63  
64  
65

1 than total number of CHD events is depicted schematically in Figure 2A and B. Here is can be  
2 seen that comparing groups P1 with P3 there was a notable reduction in the numbers  
3  
4 experiencing single and multiple CHD events over the 20 years.  
5  
6  
7  
8

9 Figure 3A shows the cumulative incidence for CHD hospitalisations in 45 to 54-year-old and 55  
10 to 64-year-old men within the WOSCOPS randomised cohort (n=6544; 51 men with incomplete  
11 Visit 1 information were not included in this analysis), and Figure 3B the difference plot with  
12 time. It is clear from consideration of Figure 3B that the cumulative benefit of cholesterol  
13 lowering in primary prevention is greater if intervention is started in the first compared to the  
14 second age decade. The former group (average age 50 years) in the placebo arm of the trial  
15 experienced about 75 events per 100 subjects by the end of the 20-year observation period  
16 (Figure 3A). The observed accrued benefit at age 65 and 70 years respectively was a decrease of  
17 about 5.1 to 6.2 events per 100 subjects (Figure 3B). On the other hand, waiting until men were  
18 55 to 64 years (average age 60 years) before intervention led to a lower accrued benefit of 2.7  
19 events prevented per 100 subjects by age 65, and 4.7 events prevented by age 70.  
20  
21  
22  
23  
24  
25  
26  
27  
28  
29  
30  
31  
32  
33  
34  
35  
36  
37  
38

39 The potential impact of starting cholesterol lowering earlier is even clearer if the screenee data  
40 are used to model the outcome for each age decade (Figure 3C). Cumulative differences between  
41 the P4 and P3 groups in Table 1 were determined, and for 45-54 year old men by age 70 years the  
42 number of events prevented by being at a 1.0mmol/l lower total cholesterol was over 10 per 100  
43 subjects, whereas for 55 to 64 year olds by age 70 the same difference in cholesterol saved only 6  
44 events per 100 subjects.  
45  
46  
47  
48  
49  
50  
51  
52  
53  
54  
55

56 Applying the QRISK2 calculation to the younger decade of the WOSCOPS randomised cohort  
57 (Figure 3B) gave a 10-year cardiovascular disease risk of 5.2% to 9.1% depending on smoking  
58  
59  
60  
61  
62  
63  
64  
65

1 habit which does not meet the threshold of 10% required before drug treatment is recommended

2 [5]. Finally, it was reassuring again that estimated rates of accrued benefit per 100 subjects were  
3  
4 similar in the modelled outcome to those seen in the trial cohort.  
5  
6  
7  
8

9  
10 *Benefit of cholesterol lowering in a 'secondary prevention' setting*

11  
12 The predicted benefit of lowering cholesterol in the screenees with a history of CHD (Table 1), as  
13  
14 expected, exceeded that seen in the primary prevention setting. Men in group S3 with mean total  
15  
16 cholesterol levels close to that seen in the whole screened population (5.9mmol/l; [16]) had on  
17  
18 average 140.6 CHD events per 100 over 20 years (Table1) and utilised 931.7 hospital days for  
19  
20 CHD causes. In this 'secondary prevention' setting it was estimated that 26.8 events per 100 men  
21  
22 would be prevented by lowering cholesterol by approximately 1.0mmol/l from the mean level,  
23  
24 and about 63.2 events per 100 by reducing cholesterol by 2.0mmol/l (Table 2). The impact of this  
25  
26 magnitude of cholesterol reduction on a per subject basis is depicted in Figure 2C and D. This  
27  
28 shows the substantial number of subjects experiencing CHD death and multiple CHD events and  
29  
30 the predicted reduction when LDLc is 50% lower. The number of hospital days saved amounted  
31  
32 to 158.2 to 405.5 per 100 subjects respectively (Table 2). Even comparing the two groups with  
33  
34 the lowest cholesterol levels (S1 and S2) a 1.1 mmol/l difference was associated potentially with  
35  
36 36.5 fewer events and a saving of 247.3 hospital days per 100 subjects.  
37  
38  
39  
40  
41  
42  
43  
44  
45  
46  
47  
48  
49  
50  
51  
52  
53  
54  
55  
56  
57  
58  
59  
60  
61  
62  
63  
64  
65

## Discussion

1  
2  
3  
4  
5 For many subjects the 20-year observation period was an estimate of ‘lifelong’ benefit since the  
6 mean age rose from 55 to 75 years and life expectancy for men in Scotland is 76 years (see  
7  
8 Registrar General’s report at [www.nrscotland.gov.uk](http://www.nrscotland.gov.uk)). Our main findings were that total CHD  
9  
10 burden over this time was considerable and strongly related to **plasma** cholesterol levels both in  
11  
12 men without (‘primary prevention’ setting) or with (‘secondary prevention’) a history of CHD at  
13  
14 screening. Predicted benefits of intervention were large in that a decrease of around 1.0mmol/l  
15  
16 would lead 8.9 fewer CHD events per 100 subjects in primary prevention at starting **total**  
17  
18 cholesterol levels of 6.0mmol/l (close to the population average), and 26.8 to 36.5 fewer events  
19  
20 per 100 in secondary prevention when the initial **total** cholesterol was 6.0 and 5.0mmol/l  
21  
22 respectively. If the estimated LDLc was reduced by about 50% then the potential decrease in  
23  
24 CHD events was 19.4 to 31.5 per 100 subjects in primary prevention and 63.2 CHD events per  
25  
26 100 subjects in secondary prevention (Table 2). The corresponding savings in hospital days were  
27  
28 also substantial.  
29  
30  
31  
32  
33  
34  
35

36  
37  
38  
39 The need to take a long-term view in a disease with a decades-long trajectory is recognised  
40  
41 increasingly. In the IMPROVE-IT [10, 24] and HOPE-3 studies [11] LDL lowering decreased  
42  
43 risk of a second or third cardiovascular event to a similar extent to that seen for the first event.  
44  
45 Comparing findings in these trials with the total CHD burden modelled here it can be seen that in  
46  
47 HOPE-3 the number of co-primary endpoints prevented by a 1.0 mmol/l decrease in a cohort  
48  
49 with population average LDLc (3.31 mmol/l) was 1.1 per 100 subjects over 5.6 years (the study  
50  
51 duration) [11] whereas the cumulative events over 20 years predicted to be prevented in a similar  
52  
53 group by an equivalent cholesterol reduction was 8.9 per 100 with a saving of 56 days in hospital  
54  
55 per 100 subjects. Likewise, in IMPROVE-IT [24] the difference in LDLc between the two  
56  
57  
58  
59  
60  
61  
62  
63  
64  
65

1 treatment arms was 0.4 mmol/l and the number of primary endpoint events prevented was 1.87  
2 per 100 subjects. The same cholesterol decrease (taken as a proportion of the difference between  
3 the levels seen in groups S2 and S1 in Table 2) would give 13.3 fewer CHD events and save 95.4  
4 hospital days per 100 subjects over 20 years. With respect to European guidelines [2], patients at  
5 very high risk have a recommended LDLc goal of <1.8mmol/l and a desired reduction of >=50%  
6 if the starting LDLc is 1.8 to 3.5mmol/l. The present study predicts that the long-term (lifelong)  
7 benefit of LDL lowering of this magnitude would be considerable as can be seen by comparing  
8 groups S3 and S1 for total events in Table 2, and on a per-subject basis in Figure 2.  
9

10  
11  
12  
13  
14  
15  
16  
17  
18  
19  
20  
21  
22 Even with the demonstration that primary prevention subjects have a useful risk reduction [19,  
23 25] in an era when the costs of intervention are modest, there is a perceived reluctance to begin  
24 therapy, possibly because the benefits are difficult to quantify in terms understood by patients  
25 and occur in the future [17-19]. Presentation of the total CHD burden that an individual may  
26 experience, and the considerable advantages of treatment, may help deliver better strategies and  
27 compliance. Further, our findings in the two age decades add to conclusion from genetic studies  
28 [26] that earlier intervention is better. Greater emphasis on benefit rather than risk (as  
29 exemplified here in the QRISK2 results in the younger decade) may help further refine  
30 implementation strategies. Often, adverse effects are cited as a reason not to use statins more  
31 widely in the population [17-19]. This concern, including the increased risk of developing type 2  
32 diabetes, has been addressed in meta-analyses of trials [19], and also in the previously published  
33 long-term followup of the WOSCOPS trial cohort [12,14].  
34  
35  
36  
37  
38  
39  
40  
41  
42  
43  
44  
45  
46  
47  
48  
49  
50  
51  
52

53 Advantages of the present study were the size of the screened population and the longitudinal  
54 nature of the data sets. Also, it was notable that the modelled scenarios for an approximate  
55 1.0mmol/l difference in cholesterol were associated with about a 20% lower relative risk, a value  
56  
57  
58  
59  
60  
61  
62  
63  
64  
65

1 in line with the 22% seen in meta-analysis of outcome trials [3, 4]. Likewise, the approximately  
2 3-fold higher event rates seen in the 'secondary' versus 'primary' groups were in accord with the  
3  
4 relative rates for similar CHD endpoints in 4S (a trial in secondary prevention) and WOSCOPS,  
5  
6 contemporaneous studies in subjects with similar high LDLc levels [21, 27]. Limitations were  
7  
8 that events were not adjudicated, no women were included, the modelling approach estimated  
9  
10 treatment benefit from a difference in cholesterol levels in an epidemiological survey, and we had  
11  
12 no information on which screenees were prescribed lipid-lowering medication during followup.  
13  
14 Arguably, since statins once they were introduced would be used mainly in those with higher  
15  
16 cholesterol levels, this would have the effect of compressing observed differences in event rates  
17  
18 between the groups, and so the data presented may be a conservative estimate of benefit. On the  
19  
20 other hand, population rates of CHD in Scotland fell substantially over the period of followup, so  
21  
22 the impact of lowering cholesterol today may be quantitatively less than the values quoted in the  
23  
24 current study (although the majority of events reported for our subjects occurred in the latter 10  
25  
26 years of observation).  
27  
28  
29  
30  
31  
32

33  
34  
35  
36 In conclusion, this study used electronic health records to create a disease trajectory for each  
37  
38 subject and permitted the modelling of clinical benefit of an intervention based on long-term  
39  
40 observational data. Our findings support the view that primary CHD prevention is more effective  
41  
42 if initiated in early mid-adult life and that the benefits of secondary prevention, given the very  
43  
44 high total burden of disease, are substantial.  
45  
46  
47  
48  
49  
50  
51  
52  
53  
54  
55  
56  
57  
58  
59  
60  
61  
62  
63  
64  
65

1 **References**

- 2  
3  
4  
5 1. Stone NJ, Robinson JG, Lichtenstein AH, Bairey Merz CN, Blum CB, Eckel RH, Goldberg  
6 AC, Gordon D, Levy D, Lloyd-Jones DM, McBride P, Schwartz JS, Shero ST, Smith SC Jr,  
7  
8 Watson K, Wilson PW, Eddleman KM, Jarrett NM, LaBresh K, Nevo L, Wnek J, Anderson JL,  
9  
10 Halperin JL, Albert NM, Bozkurt B, Brindis RG, Curtis LH, DeMets D, Hochman JS, Kovacs RJ,  
11  
12 Ohman EM, Pressler SJ, Sellke FW, Shen WK, Smith SC Jr, Tomaselli GF;. 2013 ACC/AHA  
13  
14 guideline on the treatment of blood cholesterol to reduce atherosclerotic cardiovascular risk in  
15  
16 adults. *Circulation*. 2014; 129 (suppl 2):S1-S45.  
17  
18  
19 2. Catapano AL, Graham I, De Backer G, Wiklund O, Chapman MJ, Drexel H, Hoes AW,  
20  
21 Jennings CS, Landmesser U, Pedersen TR, Reiner Ž, Riccardi G, Taskinen MR, Tokgozoglul,  
22  
23 Verschuren WM, Vlachopoulos C, Wood DA, Zamorano JL 2016 ESC/EAS Guidelines for the  
24  
25 Management of Dyslipidaemias: The Task Force for the Management of Dyslipidaemias of the  
26  
27 European Society of Cardiology (ESC) and European Atherosclerosis Society (EAS)Developed  
28  
29 with the special contribution of the European Association for Cardiovascular Prevention &  
30  
31 Rehabilitation (EACPR). *Eur Heart J*. 2016 Aug 27. pii: ehw272  
32  
33  
34 3. Baigent C, Blackwell L, Emberson J, Holland LE, Reith C, Bhala N, Peto R, Barnes EH,  
35  
36 Keech A, Simes J, Collins R Efficacy and safety of more intensive lowering of LDL cholesterol:  
37  
38 a meta-analysis of data from 170,000 participants in 26 randomised trials. *Lancet*  
39  
40 2010;376:1670–81.  
41  
42  
43 4. Silverman MG, Ference BA, Im K, Wiviott SD, Giugliano RP, Grundy SM, Braunwald E,  
44  
45 Sabatine MS. Association Between Lowering LDL-C and Cardiovascular Risk Reduction  
46  
47 Among Different Therapeutic Interventions: A Systematic Review and Meta-analysis. *JAMA*.  
48  
49 2016;316:1289-97  
50  
51  
52 5. National Institute for Health and Care Excellence. Lipid Modification: Cardiovascular Risk  
53  
54 Assessment and the Modification of Blood Lipids for the Primary and Secondary Prevention of  
55  
56 Cardiovascular Disease. London, England: National Institute for Health and Care Excellence.  
57  
58 2014.  
59  
60  
61  
62  
63  
64  
65

6. Bleakley C, Pumb R, Harbinson M, McVeigh GE. A Reappraisal of the Safety and Cost-Effectiveness of Statin Therapy in Primary Prevention. *Can J Cardiol*. 2015;31:1411-4.
7. Pandya A, Sy S, Cho S, Weinstein MC, Gaziano TA. Cost-effectiveness of 10-year risk thresholds for initiation of statin therapy for primary prevention of cardiovascular disease. *JAMA* 2015; 314: 142-150.
8. Anderson KM, Odell PM, Wilson PW, Kannel WB. Cardiovascular disease risk profiles. *Am Heart J*. 1991;121:293-298.
9. Soran H<sup>1</sup>, Schofield JD<sup>1</sup>, Durrington PN. Cholesterol, not just cardiovascular risk, is important in deciding who should receive statin treatment. *Eur Heart J*. 2015;36:2975-83.
10. Murphy SA, Cannon CP, Blazing MA, Giugliano RP, White JA, Likhnygina Y, Reist C, Im K, Bohula EA, Isaza D, Lopez-Sendon J, Dellborg M, Kher U, Tershakovec AM, Braunwald E. Reduction in Total Cardiovascular Events With Ezetimibe/Simvastatin Post-Acute Coronary Syndrome: The IMPROVE-IT Trial. *J Am Coll Cardiol*. 2016;67:353-61.
11. Yusuf S, Lonn E, Pais P, Bosch J, López-Jaramillo P, Zhu J, Xavier D, Avezum A, Leiter LA, Piegas LS, Parkhomenko A, Keltai M, Keltai K, Sliwa K, Chazova I, Peters RJ, Held C, Yusuf K, Lewis BS, Jansky P, Khunti K, Toff WD, Reid CM, Varigos J, Accini JL, McKelvie R, Pogue J, Jung H, Liu L, Diaz R, Dans A, Dagenais G; HOPE-3 Investigators. Blood pressure and cholesterol lowering in persons without cardiovascular disease. *N Engl J Med*. 2016;374:2032-43.
12. Ford I, Murray H, Packard CJ, Shepherd J, Macfarlane PW, Cobbe SM. Long-term follow up of the West of Scotland Coronary Prevention Study. *N Engl J Med*. 2007;357:1477-86.
13. Strandberg TE, Pyörälä K, Cook TJ, Wilhelmsen L, Faergeman O, Thorgeirsson G, Pedersen TR, Kjekshus J; 4S Group. Mortality and incidence of cancer during 10-year follow up of the Scandinavian Simvastatin Survival Study (4S). *Lancet* 2004;364:771-7.



14. Ford I, Murray H, McCowan C, Packard CJ. Long-Term Follow-up of the West of Scotland  
1 Coronary Prevention Study. *Circulation*. 2016;133:1073-80.  
2  
3  
4  
5 15. Packard C, Ford I. Long term follow up of lipid lowering trials. *Curr. Opin. Lipidol*.  
6 2015;26:572-9.  
7  
8  
9  
10 16. The WOSCOPS Study Group. Screening experience and Baseline Characteristics in the West  
11 of Scotland Coronary Prevention Study. *Am J Cardiol*. 1995;76:485-491.  
12  
13  
14  
15  
16 17. The Guidelines Battle on Starting Statins. *New Engl J Med*. 2014;370:1652-8.  
17  
18  
19  
20 18. Redberg RF, Katz MH. Statins for primary prevention:The debate is intense but the data are  
21 weak. *JAMA* 2016;316:1979-81.  
22  
23  
24  
25 19. Collins R, Reith C, Emberson J, Armitage J, Baigent C, Blackwell L, Blumenthal R, Danesh  
26 J, Smith GD, DeMets D, Evans S, Law M, MacMahon S, Martin S, Neal B, Poulter N, Preiss D,  
27 Ridker P, Roberts I, Rodgers A, Sandercock P, Schulz K, Sever P, Simes J, Smeeth L, Wald N,  
28 Yusuf S, Peto R. Interpretation of the evidence for the efficacy and safety of statin therapy.  
29 *Lancet*. 2016. doi: 10.1016/S0140-6736(16)31357-5.  
30  
31  
32  
33 20. West of Scotland Coronary Prevention Study Group. A coronary primary prevention study of  
34 Scottish men aged 45-64 years: trial design. *J Clin Epidemiol*. 1992;45:849-860.  
35  
36  
37  
38 21. Shepherd J, Cobbe SM, Ford I, Isles CG, Lorimer AR, Macfarlane PW, McKillop JH,  
39 Packard CJ. Prevention of coronary heart disease with pravastatin in men with  
40 hypercholesterolemia. *N Engl J Med*. 1995;333:1301-07.  
41  
42  
43  
44  
45  
46  
47  
48  
49 22. The West of Scotland Coronary Prevention Study Group. Computerised record linkage:  
50 comparison with traditional patient follow-up methods in clinical trials and illustrated in a  
51 prospective epidemiological study. *J Clin Epidemiol*. 1995;48:1441-52.  
52  
53  
54  
55  
56 23. Hippisley-Cox J, Coupland C, Robson J, Brindle P. Derivation, validation, and evaluation of  
57 a new QRISK model to estimate lifetime risk of cardiovascular disease: cohort study using  
58 QResearch database. *BMJ*. 2010;341:c6624. doi:10.1136/bmj.c6624.  
59  
60  
61  
62  
63  
64  
65

- 1  
2 24. Cannon CP, Blazing MA, Giugliano RP, McCagg A, White JA, Theroux P, Darius H, Lewis  
3 BS, Ophuis TO, Jukema JW, De Ferrari GM, Ruzyllo W, De Lucca P, Im K, Bohula EA, Reist C,  
4 Wiviott SD, Tershakovec AM, Musliner TA, Braunwald E, Califf RM; IMPROVE-IT  
5 Investigators. Ezetimibe added to statin therapy after acute coronary syndromes. *N. Eng. J. Med*  
6 2015;372:2387-97.  
7  
8  
9  
10  
11  
12 25. Cholesterol Treatment Trialists Collaborators. The effects of lowering LDL cholesterol in  
13 people at low risk of vascular disease: meta-analysis of individual data from 27 randomised trials.  
14 *Lancet*. 2012;380:581-90.  
15  
16  
17  
18  
19  
20  
21  
22 26. Ference BA Mendelian randomization studies: using naturally randomized genetic data to fill  
23 evidence gaps. *Curr Opin Lipidol*. 2015;26:566-71.  
24  
25  
26  
27 27. Scandinavian Simvastatin Survival Study Group. Randomised trial of cholesterol lowering in  
28 4444patients with coronary heart disease: the Scandinavian Simvastatin Survival Study. *Lancet*  
29 1994;344:1883-9.  
30  
31  
32  
33  
34  
35  
36  
37  
38  
39  
40  
41  
42  
43  
44  
45  
46  
47  
48  
49  
50  
51  
52  
53  
54  
55  
56  
57  
58  
59  
60  
61  
62  
63  
64  
65

## Figure legends

**Figure 1:** Relationship between plasma cholesterol and first CHD event (death or hospitalisation) in (A) the whole group of screenees, (B) men with no self-reported history of CHD at screening, and (C) men who reported a history of CHD at screening.

**Figure 2:** CHD impact over 20 years for groups P1 vs P3 and S1 vs S3 expressed as percentages of subjects experiencing a fatal CHD event, multiple non-fatal CHD events or a single CHD event. These are depicted schematically per 50 subjects for the purposes of clarity. Note, if a subject has both a non-fatal and then a fatal event, he is counted for both in order to show the total CHD burden. Complete data are provided in supplementary tables 1 and 2.

**Figure 3:** Cumulative events over 20 years for WOSCOPS randomized cohort divided by age decade and treatment allocation (panel A). Panel B is the difference plot (placebo minus pravastatin) for each age decade for cumulative events in the two treatment arms. Panel C is the difference plot by age decade for cumulative CHD events in groups P4 and P3 in Table 1. Groups P4 and P3 comprise men who were not included in the WOSCOPS randomised trial cohort but had the same cholesterol levels as the two treatment arms. In panel B 10-year risk estimates obtained using the QRISK-2 algorithm are provided for the average WOSCOPS trial participant for non-smokers and moderate smokers.

1  
2  
3  
4  
5  
6  
7  
8  
9  
10  
11  
12  
13  
14  
15  
16  
17  
18  
19  
20  
21  
22  
23  
24  
25  
26  
27  
28  
29  
30  
31  
32  
33  
34  
35  
36  
37  
38  
39  
40  
41  
42  
43  
44  
45  
46  
47  
48  
49  
50  
51  
52  
53  
54  
55  
56  
57  
58  
59  
60  
61  
62  
63  
64  
65

**Acknowledgments**

Ian Ford and Robin Young had full access to all the data in the study and take responsibility for the integrity of the data and the accuracy of the data analysis.

All authors from the academic institution contributed to the study design, analysis plan, interpretation of the data, and preparation of the manuscript. Baishali Ambegaonkar and Philippe Brudi (employees of the funder) contributed to the conceptual design and analytical plan, but had no role in the conduct of the study or in the analysis of the data. The ‘stick-man’ schematic in Figure 2 is borrowed from a diagram generated originally by Prof. Ulrich Laufs.

**Funding Sources**

The study was supported by a grant from Merck, Sharp & Dohme, Kenilworth, New Jersey as part of an Investigator Initiated Programme. The funder was provided with a draft for comment but editorial control remained with Drs Packard and Ford.

We would also acknowledge the support from The Farr Institute @ Scotland. The Farr Institute @ Scotland is supported by a 10-funder consortium: Arthritis Research UK, the British Heart Foundation, Cancer Research UK, the Economic and Social Research Council, the Engineering and Physical Sciences Research Council, the Medical Research Council, the National Institute of Health Research, the National Institute for Social Care and Health Research (Welsh Assembly Government), the Chief Scientist Office (Scottish Government Health Directorates), the Wellcome Trust, (MRC Grant No: MR/K007017/1).

**Conflict of interest disclosures**

1  
2 Authors Ian Ford, Robin Young and Colin McCowan have no conflict of interest to disclose  
3  
4 other than research funding for this project from Merck, Sharpe and Dohme, as declared above.  
5  
6  
7 Chris Packard has research grants from Roche and honoraria from Merck, Sharpe and Dohme,  
8  
9 Pfizer, and Sanofi. Baishali Ambegaonkar and Philippe Brudi are employees of Merck, Sharpe  
10  
11 and Dohme, Kenilworth, NJ, USA.  
12  
13  
14  
15  
16  
17  
18  
19  
20  
21  
22  
23  
24  
25  
26  
27  
28  
29  
30  
31  
32  
33  
34  
35  
36  
37  
38  
39  
40  
41  
42  
43  
44  
45  
46  
47  
48  
49  
50  
51  
52  
53  
54  
55  
56  
57  
58  
59  
60  
61  
62  
63  
64  
65

Table 1: Cumulative CHD events and hazard ratios for screened population by cholesterol level.

Cholesterol Group (limits in mmol/l)	Mean total cholesterol [LDL] (mmol/l)	Mean Age (years)	Smokers (current % / former %)	Mean systolic/diastolic BP (mmHg)	No. of subjects (% died)	Observed CHD hospitalisation events per 100 subjects over 20 years	Observed CHD hospital days per 100 subjects over 20 years	Adjusted hazard ratio <sup>a</sup> (95% CI)
No CHD history – ‘primary prevention’								
P5 (>8.0) <sup>b</sup>	8.77 [6.8] <sup>c</sup>	54.1	46.0% / 29.3% <sup>d</sup>	140.4/86.6	1790 (42.0%)	65.1	435.4	2.7(2.4-3.1)
P4 (>6.5-8.0)	7.05 [5.0]	54.5	42.9% / 27.4%	139.6/86.2	10767 (39.7%)	52.7	349.6	2.2(2.0-2.5)
P3 (>5.5-6.5)	5.98 [4.0]	54.7	42.0% / 26.4%	137.7/85.1	22288 (37.3%)	42.4	288.3	1.8(1.7- 2.0)
P2 (>4.5-5.5)	5.06 [3.1]	54.6	41.7% / 25.8%	136.3/84.3	18952 (36.9%)	33.6	232.2	1.5(1.3-1.6)
P1 (<=4.5)	4.00 [2.0]	54.6	43.7% / 23.9%	135.2/83.4	7414 (41.2%)	23.0	167.2	1.0(referent)
With CHD history – ‘secondary prevention’								
S5 (>8.0)	8.81 [6.8]	56.8	47.0% / 36.1%	138.0/84.8	477 (64.8%)	141.7	936.7	1.8(1.4-2.3)
S4 (>6.5-8.0)	7.10 [5.1]	57.3	40.8% / 40.6%	137.7/84.8	2210 (64.3%)	152.9	1089.9	1.9(1.6-2.4)
S3 (>5.5-6.5)	6.02 [4.0]	57.6	40.2% / 39.1%	138.1/84.7	3105 (61.3%)	140.6	931.7	1.8(1.5-2.2)
S2 (>4.5-5.5)	5.08 [3.1]	57.7	43.5% / 36.1%	137.2/83.9	2037 (61.8%)	113.8	773.4	1.5(1.2-1.8)
S1 (<=4.5)	3.98 [2.0]	57.7	50.6% / 30.4%	135.9/83.1	741 (67.9%)	77.3	526.1	1.0(referent)

<sup>a</sup> Hazard ratio from quasi-Poisson regression adjusted for age, smoking and blood pressure.

<sup>b</sup> Subjects were categorised into groups according to cholesterol level and CHD history at screening; S1 to S5 had a history of CHD and P1 to P5 did not.

<sup>c</sup> LDL cholesterol values were assumed to be 2.0 mmol/l less than the total cholesterol as in [16]

<sup>d</sup> Percentages are given for current and former smokers, never smokers comprised the remainder.

Table 2: Modelling prevention scenarios using cumulative CHD event and hospitalization rates in the WOSCOPS screened population.

Cholesterol difference	Relative risk reduction <sup>a</sup>	Total CVD events difference over 20 years per 100 subjects	Total CVD hospital days difference over 20 years per 100 subjects
<b>No CHD history (primary prevention setting)</b>			
<i>Severe hypercholesterolaemia – P5; starting total cholesterol of 8.8 mmol/l (LDL approx 6.8 mmol/l)<sup>b</sup></i>			
1.7 mmol/l (25% LDL) <sup>c</sup> difference (change to level seen in P4)	19.1%	12.4	85.8
3.7 mmol/l (54% LDL) difference (change to level seen in P2)	48.4%	31.5	203.2
<i>Moderate hypercholesterolaemia – P4; starting total cholesterol of 7.0 mmol/l (LDL approx. 5.0 mmol/l) WOSCOPS equivalent</i>			
1.0 mmol/l (20% LDL) difference (change to level seen in P3)	19.4%	10.2	61.3
<i>Population average –P3; starting total cholesterol of 6.0 mmol/l (LDL approx 4.0 mmol/l)</i>			
0.9 mmol/l (23% LDL) difference (change to level seen in P2)	20.9%	8.9	56.0
2.0 mmol/l (50% LDL) difference (change to level seen in P1)	45.7%	19.4	121.1
<b>Previous CHD history (secondary prevention setting)</b>			
<i>Population average – S3; starting cholesterol of 6.0 mmol/l (LDL approx 4.0 mmol/l)</i>			
1.0 mmol/l (23% LDL) difference (change to level seen in S2)	19.1%	26.8	158.2
2.0 mmol/l (50% LDL) difference (change to level seen in S1)	45.0%	63.2	405.5
<i>Low – S2; starting total cholesterol of 5.0 mmol/l (LDL approx 3.0 mmol/l)</i>			
1.1 mmol/l (35% LDL) difference (change to level seen in S1)	32.0%	36.5	247.3

<sup>a</sup> Cholesterol lowering scenarios were tested for a range of starting **total** cholesterol levels using the groups defined in Table 1. Relative risk reduction compared the CHD event rate in the lower versus higher cholesterol group.

<sup>b</sup> Estimated LDL cholesterol was 2.0mmol/l less than the total plasma cholesterol level; see [16].

<sup>c</sup> The percent difference in parentheses refers to the predicted difference in LDL cholesterol between the two groups examined. Since they are based on estimates the % change is only an approximate guide.

Figure 1.

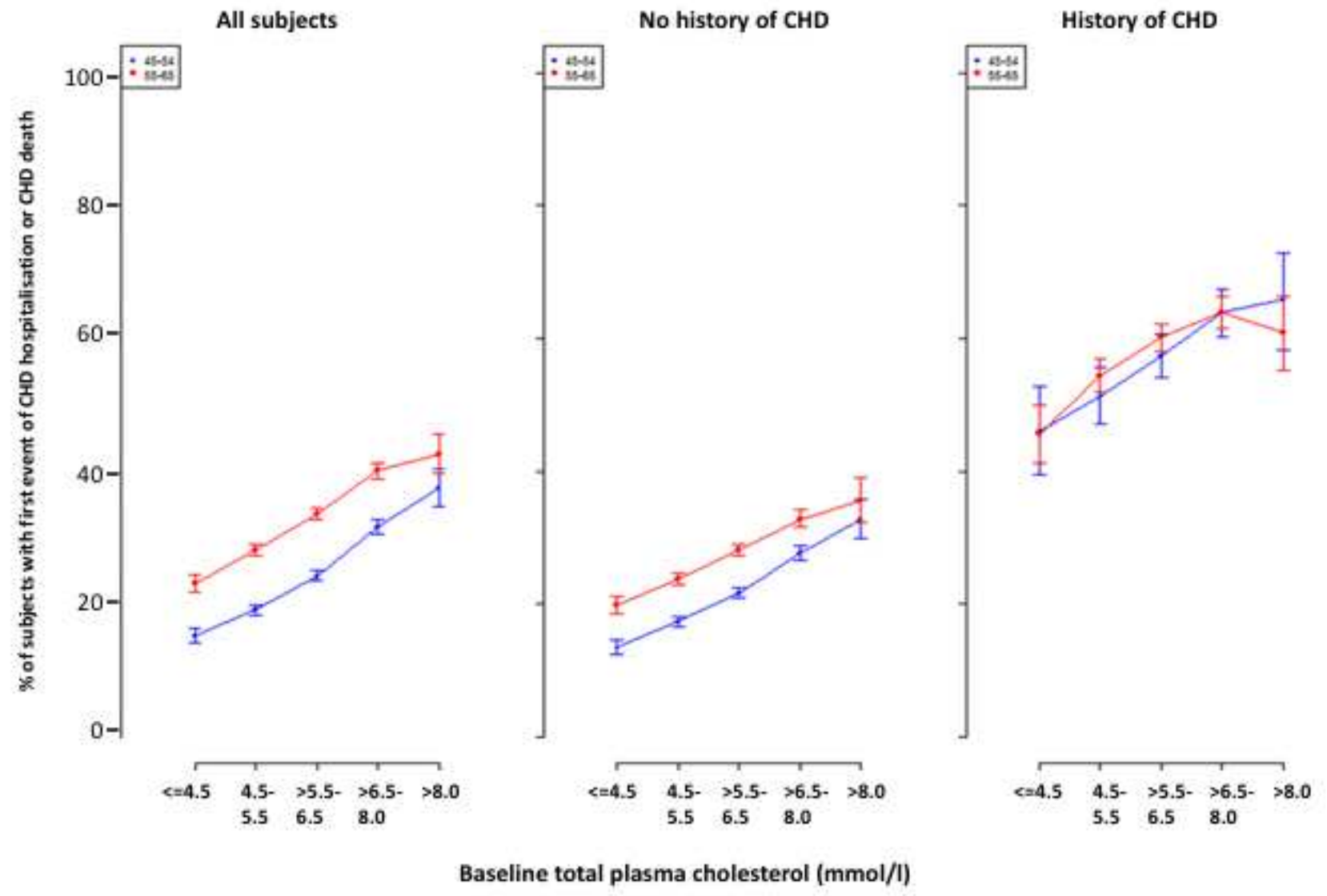




Figure 2

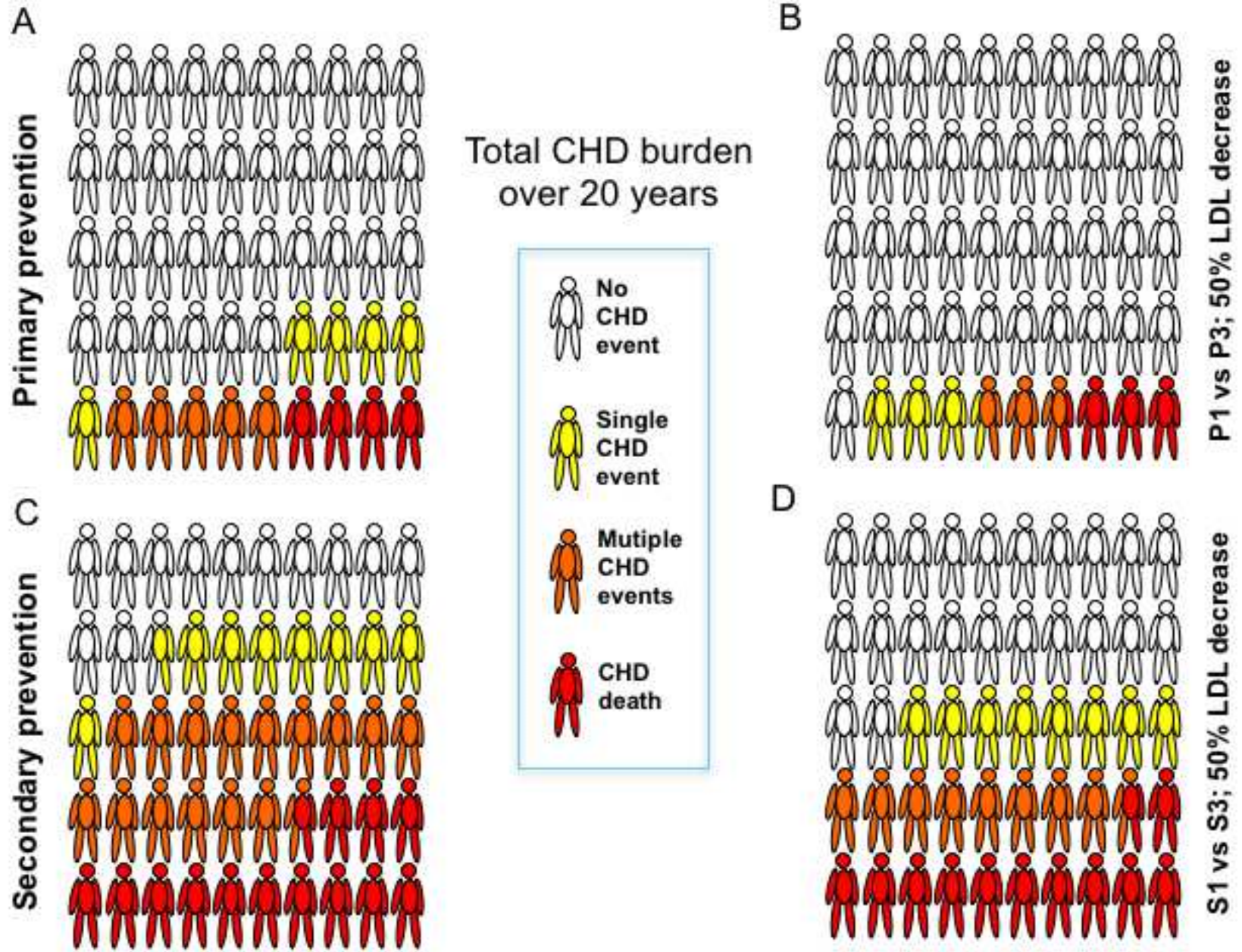
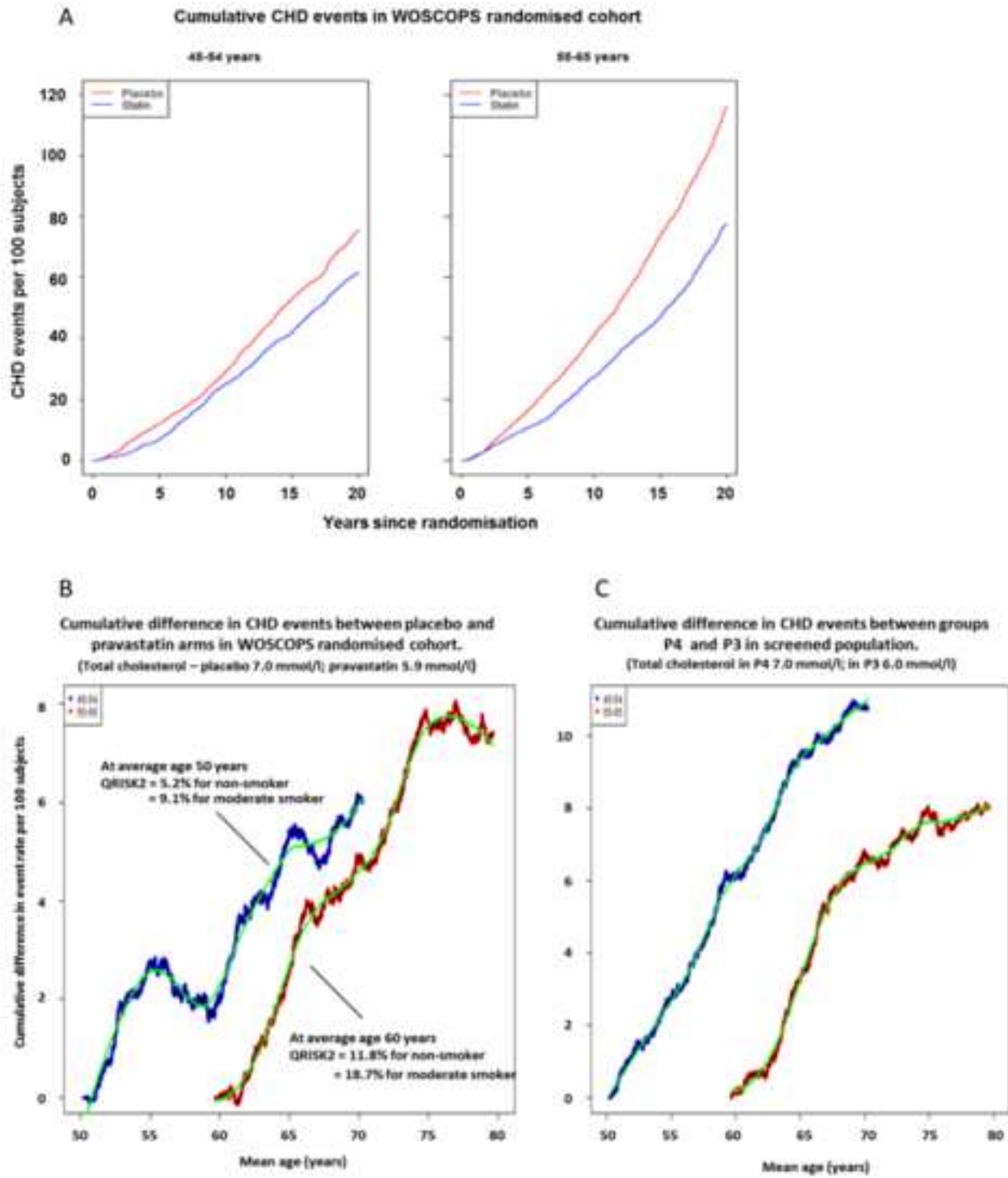


Figure 3

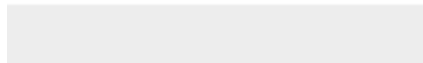




[Click here to access/download](#)

**Supplementary files**

[Modelling prevention Supplementary tables.docx](#)



Modelling total CHD burden and long-term benefit of cholesterol lowering in middle aged men with and without a history of cardiovascular disease.

Word counts

Abstract = 250 words

Main body of text (inc references, tables) = 4880

Permissions

Not applicable

## Modelling total CHD burden and long-term benefit of cholesterol lowering in middle aged men with and without a history of cardiovascular disease.

Chris J Packard<sup>1</sup>, Robin Young<sup>2</sup>, Kevin Ross<sup>2</sup>, Ian Ford<sup>2</sup>, Baishali Ambegaonkar<sup>3</sup>, Philippe Brudi<sup>3</sup>, Colin McCowan<sup>2</sup>.

Robertson Centre for Biostatistics, University of Glasgow, Glasgow, Scotland, UK G12 8QQ

<sup>1</sup>College of Medical, Veterinary and Life Sciences; <sup>2</sup>Robertson Centre for Biostatistics, University of Glasgow, Glasgow, Scotland; <sup>3</sup>Merck, Sharpe & Dohme Ltd, Kenilworth, New Jersey USA

Corresponding author:-

Professor Chris J Packard  
McGregor Building, Room 203, Floor 2  
Western Infirmary  
University of Glasgow G12 8QQ  
Telephone (44) 7788447576  
Email: [chris.j.packard@gmail.com](mailto:chris.j.packard@gmail.com)

## **Abstract**

### *Background*

Cumulative CHD events over 20 years were examined in men screened for, and in those randomised to, the West of Scotland Coronary Prevention Study.

### *Methods and Results*

Record linkage provided CHD-related events and days in hospital for the 80,230 screenees, including the randomised cohort of 6,595 men. Risk factors were determined at baseline, and disease burden assessed for groups defined by cholesterol. Effects of cholesterol lowering were modelled from differences between groups, and from the treatment arms of the trial.

Over 20 years, those without a history of CHD (n=61,211) had 23.0 events per 100 subjects in the lowest cholesterol group (mean 4.0mmol/l) and 65.1 per 100 in the highest (8.8mmol/l).

Corresponding days in hospital were 167.2 to 435.4 per 100 subjects. Analogous figures for men with a CHD history (n=8,570) were 77.3 to 141.7 events per 100 and 526.1 to 936.7 hospital days per 100.

Lowering cholesterol by about 1.0mmol/l in men with average cholesterol and no CHD was predicted to be associated with 8.9 fewer events and a saving of 56.0 hospital days per 100. In those with CHD this difference gave, depending on starting level, 26.8 to 36.5 fewer events and savings of 158.2 to 247.3 hospital days per 100 subjects.

Comparison of cumulative events in 45-54 versus 55-64 year olds in the trial revealed greater benefit from intervention in the younger decade.

### *Conclusion*

Long-term, longitudinal data reveal the considerable CHD burden in middle-aged men and indicate substantial clinical benefits from both moderate and aggressive cholesterol lowering.