



Swansea University  
Prifysgol Abertawe



## Cronfa - Swansea University Open Access Repository

---

This is an author produced version of a paper published in :

*Land Degradation & Development*

Cronfa URL for this paper:

<http://cronfa.swan.ac.uk/Record/cronfa32663>

---

### Paper:

Neris, J., Doerr, S., Tejedor, M., Jiménez, C. & Hernández-Moreno, J. Using Thermogravimetry as a Simple Tool for Nutrient Assessment in Fire Affected Soils. *Land Degradation & Development*

<http://dx.doi.org/10.1002/ldr.2698>

---

This article is brought to you by Swansea University. Any person downloading material is agreeing to abide by the terms of the repository licence. Authors are personally responsible for adhering to publisher restrictions or conditions. When uploading content they are required to comply with their publisher agreement and the SHERPA RoMEO database to judge whether or not it is copyright safe to add this version of the paper to this repository.

<http://www.swansea.ac.uk/iss/researchsupport/cronfa-support/>

# USING THERMOGRAVIMETRY AS A SIMPLE TOOL FOR NUTRIENT ASSESSMENT IN FIRE AFFECTED SOILS

SHORT TITLE: THERMOGRAVIMETRY FOR NUTRIENT ASSESSMENT IN BURNED  
SOILS

Jonay Neris<sup>a,b\*</sup>: [j.neristome@swansea.ac.uk](mailto:j.neristome@swansea.ac.uk)

Stefan H. Doerr<sup>a</sup>: [s.doerr@swansea.ac.uk](mailto:s.doerr@swansea.ac.uk)

Marisa Tejedor<sup>b</sup>: [martesa@ull.es](mailto:martesa@ull.es)

Concepción Jiménez<sup>b</sup>: [cacojime@ull.es](mailto:cacojime@ull.es)

José M. Hernández-Moreno<sup>b</sup>: [jhmoreno@ull.es](mailto:jhmoreno@ull.es)

a: Swansea University, Dept. of Geography, College of Science, Swansea SA2 8PP, West Glamorgan, UK. b:  
Departamento de Biología Animal y Edafología y Geología, Facultad de Ciencias, Universidad de La Laguna.  
Av. Astrofísico Fco. Sánchez s/n, Campus Anchieta, 38200, La Laguna, Spain.

\* Corresponding author. Swansea University, Dpt. of Geography, College of Science, Swansea SA2 8PP, West  
Glamorgan, UK Phone: 0044 1792602054 e-mail: [j.neristome@swansea.ac.uk](mailto:j.neristome@swansea.ac.uk)

This article has been accepted for publication and undergone full peer review but has not been through the copyediting, typesetting, pagination and proofreading process which may lead to differences between this version and the Version of Record. Please cite this article as doi: 10.1002/ldr.2698

## ABSTRACT

Nutrient availability can be a limiting factor in the recovery of ecosystems after wildfire. Its evaluation is therefore critical for selecting appropriate restoration strategies in the post-fire period. This study explores, for the first time, the use of thermogravimetry (TG) as a rapid proxy for nutrient availability and soil recovery. Soil samples from five burned and unburned sites in Andisols of Tenerife (Spain) were selected to examine the medium-term impact of fire. Key soil chemical parameters (pH, EC, CEC, main cation and anions in the soil solution, TOC, TN and available P) were determined and TG performed. Burned soils showed significantly higher pH,  $\text{Ca}^{2+}$  and  $\text{Mg}^{2+}$  and a lower CEC, TOC and TN than the unburned counterparts, and a site-dependent response for soluble  $\text{SO}_4^{2-}$  and available P was observed in the medium-term. Time elapsed since fire could have masked additional fire-impacts. TG data allowed reasonable prediction of most soil properties and parameters, with  $r^2$  ranging from 0.4 to 0.9. The results demonstrate that soluble nutrients content is directly related to the amount of ash in the soil. The decrease of labile carboxyl-C was associated with an increase of pH and decrease of CEC, whereas the increase of recalcitrant and refractory pools was associated with the amount of TOC and TN. The results suggest that this novel application of an established method can provide, following an initial calibration step, rapid and inexpensive proxies for key parameters necessary for assessing fire-induced ecosystem degradation and designing suitable restoration strategies in the post-fire period.

### KEY-WORDS:

Wildfires, land degradation assessment, thermal analysis, soil chemical properties, Andisols.

## INTRODUCTION

Wildfires can have profound effects on soil quality. Assessing the impacts of a fire on soil properties is an important step in determining the need and choice of specific ecosystem restoration treatments in the post-fire period (Bento-Goncalves *et al.*, 2012). Several burn severity indexes (Moreno & Oechel, 1989; Ryan, 2002; Parsons *et al.*, 2010) have been developed in order to classify fire impacts on key soil parameters presumed to directly influence ecosystem recovery and response in the post-fire period (Keeley, 2009). However, they generally focus on few specific variables (i.e. ground cover, soil structure and colour, ash colour and depth, soil water repellency, etc.) and are thus not particularly informative for predicting wider ecosystem responses (Jain *et al.*, 2012; Keane *et al.*, 2012).

The availability of nutrients is one key parameter that is often altered by fire impacts on soils and which affects ecosystem properties and functions (Pereira *et al.*, 2016). For example, the combustion of aboveground fuels and soil organic matter (SOM) produces ash, a fire by-product that comprises charred organic residues and mineral components rich in nutrients (Bodì *et al.*, 2014). The incorporation of these nutrients into the soil profile have been reported to lead to the ephemeral increase of the available and total nutrient content (see comprehensive reviews by Certini, 2005; Caon *et al.*, 2014; Santín *et al.*, 2015). Conversely, solute losses triggered by nutrient transport in the runoff and leaching through the soil profile can reduce nutrient availability (Lasanta & Cerdà, 2005) and hinder vegetation recovery due to the limiting role of soil nutrients in plant productivity (Caon *et al.*, 2014; Pereira *et al.*, 2015). The analysis of nutrient levels in soil, however, usually involves costly and time consuming techniques and, hence, this important parameter is often not determined in post-fire assessments.

Thermogravimetry (TG) stands out as a rapid, inexpensive and information-rich methodology, which has been used in soil studies primarily for characterizing clay mineralogy and SOM pools (Plante *et al.*, 2009). It has also been proven useful as a simple proxy for other properties of different soils and land uses such as clay and carbonate content (Siewert, 2004) and was shown recently to also be effective as a proxy for physical and hydrological properties of fire-affected soils (Neris *et al.*, 2014). However, to our knowledge, no studies exist that explore the link between fire impacts on SOM, ash production and nutrient availability in the post-fire period using TG data.

The main aims of this study, therefore, were to evaluate the usefulness of TG for assessing fire impacts on SOM composition and to explore its potential links with soil nutrient availability and ecosystem recovery potential.

## MATERIAL AND METHODS

### *Study region and characteristics of the forest fire*

The volcanic island of Tenerife (Canary Islands, Spain) is situated between 27° 55' and 28° 35' N and between 16° 05' and 16° 55' W (Figure 1). The study area is located on the island's northern hillsides (950 and 1,250 m a.s.l.). Where the annual precipitation range from 600 to 1,000 mm and is supplemented by up to 5 times the annual rainfall as water from condensation (Marzol, 2008). Basaltic pyroclasts and lava flows (0.7-0.01 M years old) with subsequent rejuvenations by analogous ashes (<0.01 M years old) are the main lithologies in the area, whereas pine forest (*Pinus canariensis* Chr. Sm. ex DC) and rainforest (*Erica arborea* L.; *Ilex canariensis* Poir.; *Laurus novocanariensis* Rivas Mart., Lousâ, Fern. Prieto, E. Díaz, J.C. Costa & C. Aguiar; and *Morella faya* (Aiton) Wilbur among other species) comprise vegetation. The soils are mostly allophanic Andisols, classified as Ustands and

Udands (Soil Survey Staff, 1999) depending on their soil moisture regime (Tejedor *et al.*, 2009; Rodríguez *et al.*, 2010).

The forest fire examined here started on 30 July 2007 on the northern hillsides of Tenerife (Canary Islands, Spain -Figure 1). It burned an area of almost 17,000 ha with a perimeter of 90 km (Figure 1) (Instituto Canario de Estadística, 2013). The fire broke out during a high temperature (30-45 °C), low relative humidity (5-10 %) period with winds occasionally exceeding 50 km h<sup>-1</sup>. The fire covered a large elevation range (500-2,000 m a.s.l.) with moderately-steep hillslopes (10 to 25°) and different types of vegetation. Woodland was the main vegetation type affected (13,500 ha), the majority of which consisted of pine forest (95%) and the remainder rainforest.

#### *Research design and sampling site selection*

Five study sites were selected in the fire affected area (1-5; Figure 1) where previous studies provided information on the effects of fire on soil physical and hydrological properties (Neris *et al.*, 2013) and the relationships between those properties and SOM characteristics (Neris *et al.*, 2014). Each site consisted of a burned zone (B) and an unburned control zone (U) with the same soil type and pre-fire vegetation. The control zones had not been burned for at least 20 years. The elevation ranged from 900 to 1,200 m a.s.l. and the distance between U and B zones from 150 to 640 m. Firebreaks and ravines had been the main factors stopping the fire and protecting the U zones. Pine forest was the dominant vegetation, with some sites having undergrowth consisting of *Erica sp* and *Morella faya* (Aiton) Wilbur. The soils at all five sites were allophanic Andisols (Soil Survey Staff, 1999), but with a wide range of pre-fire soil properties associated with regionally diverse forest soil characteristics (Table 1). The burn severity was classified as light for sites B1, B4 and B5, and moderate for zones B2 and B3, according to the metric by Ryan (2002). Due to sampling permission issues, soil samples

were collected between 8 to 10 months after the fire. In this period, post-fire rainfall was 200-250 mm, although major soil erosion or deposition processes in the selected sites were unlikely due to the low intensity of the rainfall events before the soil sampling campaign. Given that this study aimed to evaluate TG as a proxy for key soil chemical parameters relevant to the recovery of fire affected ecosystems rather than immediate fire impacts on soil properties, this delay provided an excellent opportunity to carry out such an evaluation for a more stable, medium-term scenario that follows repeated post-fire wetting and drying cycles (Shakesby & Doerr, 2006) and ash redistribution (Bodì *et al.*, 2014).

#### *Soil sampling, preparation and analysis*

For the purpose of this study soil samples previously obtained and analysed for physical and hydrological parameters by Neris *et al.* (2013) and for TA and specific SOM characteristics by Neris *et al.* (2014) were used. Briefly, three bulk soil samples were collected from the upper 5 cm of each burned and unburned site (3 samples x 10 sites). After collection, all the samples were air-dried and passed through a 2 mm sieve prior to analysis. A detailed explanation of the sampling design and methods is given in Neris *et al.* (2013).

For this study the following soil parameters were analyzed following standard methods (Soil Survey Staff, 1996): pH in H<sub>2</sub>O at a soil:solution ratio of 1:2.5; electric conductivity (EC<sub>1:5</sub>) in a 1:5 soil:water extractant; cations and anions in the 1:5 suspension by atomic absorption (Ca<sup>2+</sup>, Mg<sup>2+</sup>), flame emission spectrophotometry (Na<sup>+</sup> and K<sup>+</sup>), turbidimetry after adding BaCl<sub>2</sub> (SO<sub>4</sub><sup>2-</sup>), brucine method (NO<sub>3</sub><sup>-</sup>) and Olsen method (PO<sub>4</sub><sup>3-</sup>); cation exchange capacity (CEC) by ammonium acetate (NH<sub>4</sub>OAc); available phosphorus (P) by Olsen method; and total C and N (TN) by dry combustion. As the samples did not contain inorganic carbonates

(Neris *et al.*, 2013), total C determined was taken as representing soil Total Organic Carbon (TOC).

In order to evaluate links between the medium-term impact of the fire on SOM composition and soil chemical characteristics the data on chemical properties obtained for this study was correlated to TG data previously obtained by Neris *et al.* (2014) using the same soil samples.

In summary, thermogravimetry (TG) and differential thermal analysis (DTA) were performed in a simultaneous thermal analyser. Thermograms were obtained by heating the soil sample at  $10\text{ }^{\circ}\text{C min}^{-1}$  from 30 to  $700\text{ }^{\circ}\text{C}$  under  $\text{O}_2$  flux ( $20\text{ cm}^3\text{ min}^{-1}$ ). Weight losses for each  $10\text{ }^{\circ}\text{C}$  temperature range (30 to  $700\text{ }^{\circ}\text{C}$ ) were determined according to Siewert (2004). DTG and DTA obtained previously showed the typical thermo-oxidative decay comprising 4 main steps (De la Rosa *et al.*, 2008a; Merino *et al.*, 2014): (i) dehydration processes from 30 to  $200\text{ }^{\circ}\text{C}$  (Endo0), (ii) exothermic oxidation of thermolabile compounds from 200 to  $380\text{ }^{\circ}\text{C}$  (Exo1), (iii) exothermic oxidation of recalcitrant compounds from 380 to  $475\text{ }^{\circ}\text{C}$  (Exo2), and (iv) exothermic oxidation of refractory compounds from 475 to  $700\text{ }^{\circ}\text{C}$  (Exo3). As reported by Neris *et al.* (2014) for the soils examined in this study, burned soils presented lower values of total weight loss (TWL) from 30 to  $700\text{ }^{\circ}\text{C}$  and weight loss (WL) from 200 to  $700\text{ }^{\circ}\text{C}$ , indicative of a partial consumption of organic compounds by fire. Additionally, the labile organic matter pool (Exo1) of burned soils was significantly lower than that of the unburned counterparts, whereas recalcitrant (Exo2) and refractory (Exo3) organic matter pools were significantly higher in burned soils. Sites 1 and 3 and, to a lesser extent 2, showed the more notable changes in TWL, WL and organic pools distribution. A detailed explanation of the TA methods and results is given in Neris *et al.* (2014).



### *Statistics*

SPSS version 17.0.0 was used for the statistical analysis of the results. Data were analyzed for normality using the Shapiro-Wilk test and transformed (Box-Cox) as necessary at all sites. Two-way analysis of variance (ANOVA) was used to study the significant effect of soil type (site) and fire (site × fire) on the chemical parameters evaluated. Correlations between soil chemical properties (dependent variables) and weight losses at different temperature range intervals (independent variable) were examined for the burned soils by Pearson-r correlation and simple linear regression respectively. A significance level of 0.05 was chosen ( $p < 0.05$ ).

## RESULTS

### *Pre-fire soil chemical properties and medium-term fire impacts*

Soil characteristics and significant statistical differences for the study sites are given in Table 1. The unburned soils (U zones) exhibited a pH from moderately acid to neutral and  $EC_{1:5}$  ranging from 125 to 655  $\mu\text{S cm}^{-1}$ .  $\text{NO}_3^-$ ,  $\text{SO}_4^{2-}$ ,  $\text{Na}^+$  and  $\text{Ca}^{2+}$  were the main ions in the soil solution. Both TOC and TN showed high values in comparison with other soil types, ranging from 72 to 174 and 3.5 to 11.6  $\text{g kg}^{-1}$  respectively. Average CEC was  $28.7 \pm 7.0 \text{ cmol}_c \text{ kg}^{-1}$ . Zones U1 and U3 showed the highest values of  $EC_{1:5}$ , cations, anions, TOC, TN and CEC and lowest pH. Significant statistical differences between the 5 sites studied were found for all the chemical properties evaluated except for  $\text{PO}_4^{3-}$  (Table 2). However, since the magnitude of these differences is low and all the soils were classified as allophanic Andisols, these differences were considered trivial and no major effects on the soil response to fire can be expected from them.

The burned soils exhibited a statistically significant lower TOC and TN contents, whereas P differences depended on the site evaluated (site  $\times$  fire interaction was statistically significant) (Tables 1 and 2). Available P values were larger for burned than for unburned soils at sites 1 and 3 but lower at sites 2 and 5. Burned zones also exhibited significantly higher pH values (from  $6.3 \pm 0.5$  to  $6.7 \pm 0.5$ ). The largest differences between burned and unburned soils regarding TOC, TN and pH were found in sites 1, 2 and 3, whereas those differences were minor or non-existent in sites 4 and 5. The values of CEC were significantly lower and  $\text{Ca}^{2+}$  and  $\text{Mg}^{2+}$  content was significantly higher in burned zones in comparison to their unburned counterparts. This response was observed mainly in sites 1 and 3, whereas it was minor in sites 2, 4 and 5 (CEC was slightly higher in B4 than U4). None of the anions evaluated showed statistically significant differences between unburned and burned zones, although the differences between burned and unburned zones regarding  $\text{SO}_4^{2-}$  depended on the site evaluated (site  $\times$  fire interaction was statistically significant). Zones B1 and B2 showed lower  $\text{SO}_4^{2-}$  in comparison with their unburned counterparts, whereas zone B3 showed noticeably higher values than U3 and these differences were negligible in sites 4 and 5.

#### *Using TG to predict soil chemical properties of fire-affected soils*

Soil chemical properties analysed for this study were evaluated for correlations with the different indexes of SOM content and composition: (i) the general TG thermo-oxidative step parameters (Exo1, 2 and 3), and (ii) the indexes associated to the weight losses for each 10 °C temperature range obtained by TG. Thermo-oxidative steps were not correlated to 4 of the 15 properties evaluated, including key parameters such as pH, most anions ( $\text{SO}_4^{2-}$ ,  $\text{PO}_4^{3-}$ ) and P (Table 3). The simple linear regressions performed showed that the association were weak with properties such as CEC,  $\text{K}^+$ , TOC or TN ( $r^2 < 0.5$ ), moderate with properties such as  $\text{EC}_{1:5}$ ,  $\text{NO}_3^-$ ,  $\sum \text{anions}_{1:5}$  or  $\text{Na}^+$  ( $0.5 < r^2 < 0.7$ ) and relatively strong with  $\text{Ca}^{2+}$ ,  $\text{Mg}^{2+}$  or cations

( $r^2 > 0.7$ ) (Table 3). The weight losses at the recalcitrant pool (Exo2) showed the highest values of  $r^2$ , explaining over 80% of the variability of some key parameters (i.e.  $EC_{1:5}$ ,  $Ca^{2+}$  and  $Mg^{2+}$ ). Weight losses at the labile pool (Exo1) explained less than 80% of the variability of some parameters evaluated. The refractory pool (Exo3) was only associated with CEC, explaining 57% of the variability of this parameter. The slopes of the regressions lines between soil properties and thermos-oxidative steps were negative for Exo1 except with CEC, positive for Exo2 and negative for Exo3 (Table 3).

In contrast, the 10 °C temperature range steps calculated correlated to all the parameters evaluated except  $PO_4^{3-}$  (Table 3). In addition, higher  $r^2$  than conventional thermo-oxidative steps were observed for all the parameters using this approach ( $r^2$  was equal for  $K^+$ ). Weight losses at 10 °C temperature range steps explained less than 50% of the sample variability of 3 parameters ( $SO_4^{2-}$ ,  $K^+$  and P), between 50 and 70% of 2 (pH and CEC), and more than 70% of 9 parameters evaluated ( $EC_{1:5}$ ,  $NO_3^-$ ,  $\sum anions_{1:5}$ ,  $Ca^{2+}$ ,  $Mg^{2+}$ ,  $Na^+$ ,  $\sum cations_{1:5}$ , TN and TOC) (Table 3). Over 90% of the variability of TOC was explained. Weight losses at 10 °C steps at the range 370-560 °C, corresponding to the recalcitrant pool (Exo2) and the less stable compounds of the refractory pool (Exo3), showed the larger number of statistically significant correlations and the strongest associations to the parameters evaluated (see Figures 2 and 3). Soil parameters such as  $EC_{1:5}$ ,  $Ca^{2+}$ ,  $Mg^{2+}$ ,  $Na^+$ ,  $K^+$ ,  $\sum cations_{1:5}$ ,  $NO_3^-$ , TN or TOC presented their highest Pearson-r values with 10 °C steps at this temperature range. The maximum coefficient of determination ( $r^2$ ) for most of these parameters is in the range 490-520 °C, except for TOC and TN (400-410 and 460-470 °C respectively) (Table 3).  $SO_4^{2-}$  and CEC also showed secondary peaks of Pearson-r values at this temperature range. The correlation between all the parameters stated above and the weight losses at 10 °C steps for this range (370-560 °C) were positive (Figures 2 and 3). Other parameters such as pH, CEC,

SO<sub>4</sub><sup>2-</sup> or P showed their maximum Pearson-r and r<sup>2</sup> values at the range 150-340 °C (Table 3 and Figures 2 and 3). This temperature range corresponds to the less thermally stable compounds of the labile pool (Exo1) and, marginally, to the more thermally stable ones of the Endo0. The Pearson-r values in this temperature range were positive for EC and SO<sub>4</sub><sup>2-</sup>, whereas pH and P showed negative values (Figures 2 and 3). Two marginal peaks of Pearson-r values were observed at the temperature ranges: i) 40-120 °C, corresponding to the dehydration step, for CEC and TOC (positive correlations) and P and pH (negative correlations), and ii) 610-650 °C, corresponding to the refractory pool (Exo3), for pH, EC<sub>1:5</sub>, SO<sub>4</sub><sup>2-</sup>, NO<sub>3</sub><sup>-</sup>, Ca<sup>2+</sup>, Mg<sup>2+</sup>, Na<sup>+</sup>, K<sup>+</sup>, Σcations<sub>1:5</sub>, CEC and P (all positive except CEC) (Figures 2 and 3). None of the last soil parameters showed maximum values of r<sup>2</sup> at this temperature range.

## DISCUSSION

### *Medium-term impact of fire on soil chemical properties*

Eight to ten months after the fire, several fire impacts widely reported from other environments and summarised in the reviews by Certini (2005) and Santín & Doerr (2016) were significant in the study area. They comprised a decrease of TOC, TN and CEC, an alteration of the chemical composition of the soil organic compounds and an increase of pH and key cations (Ca<sup>2+</sup>, Mg<sup>2+</sup>) and some anions (SO<sub>4</sub><sup>2-</sup>) in the soil solution. As widely reported (e.g. Giovannini *et al.*, 1990; González-Pérez *et al.*, 2004), the impact of heating on SOM directly affects TOC and TN content and chemical composition of C and N forms, which are reduced and become more recalcitrant in the soil surface (Aznar *et al.*, 2016). This impact has been detected by other researchers also in the medium- and longer-term (e.g. Kutiel & Inbar, 1993; Johnson *et al.*, 2007; Mora *et al.*, 2016).

It is suggested that the largest reduction and chemical alteration of SOM of sites B1 and B3 led to: i) a decrease of CEC since SOM show high density of surface charge that contribute to soil cation adsorption (Giovannini *et al.*, 1990; Certini, 2005; Inbar *et al.*, 2014); ii) an increase of cations in the soil solution as a consequence of their release during the mineralization of organic compounds (Pereira *et al.*, 2014b; Wang *et al.*, 2016); and iii) an increase of pH due to the stated rise of alkaline salts and denaturation of organic acids (Kutiel & Naveh, 1987; Aznar *et al.*, 2016) in these sites. The direct association between SOM and CEC is also highlighted by the high correlation coefficient between both properties for the soils studied (Pearson-r = 0.67; data not shown). Contrarily, where SOM showed smaller differences between burned and unburned sites (B2, B4 and B5), no major changes in CEC, pH or cations were observed, as it was previously reported by Mora *et al.* (2016) studying fire-affected pine forest from volcanic areas. However, it is also likely that these effects could have been covered up in the remaining sites (B2, B4 and B5) by hydrological and biogeochemical processes occurred in the post-fire period (8-10 months) due to the transient nature of these fire impacts (Bodì *et al.*, 2014; Pereira *et al.*, 2015).

The comparison of burned and unburned soil properties suggests also that some of the immediate impacts of fire on soil properties could have been diluted in the medium-term. Often reported immediate impacts of severe fires on soils, such as the increase of certain nutrients (available P, anions and Na<sup>+</sup> and K<sup>+</sup>) and soil EC (Iglesias *et al.*, 1997; Certini, 2005; Dorta Almenar *et al.*, 2015), were not observed in this study. The absence of differences in these parameters for the studied soils could be attributed to: i) lower production of some nutrients during the combustion of organic compounds (i.e. available P and Na<sup>+</sup>) (Bodì *et al.*, 2014), ii) time elapsed since fire and the hydrological and biological processes occurring in this interval, and iii) specific anion sorption of Andisols. The occurrence of

major erosion or deposition events inducing extensive soil redistribution processes in the selected areas is unlikely due to the low rainfall intensity of the events that occurred before soil sampling (max. daily precipitation: 39 mm day<sup>-1</sup>) and the moderate infiltration rate of the study areas (ranging from 18 to 33 mm h<sup>-1</sup>) reported by Neris *et al.* (2013). However, infiltration processes and minor saturated overland flow events were likely during these rainfall events (200-250 mm in 8-10 months). These low-intensity events could have caused some ash redistribution, and selective solute leaching (Lasanta & Cerdà, 2005; Cancelo-González *et al.*, 2013; Escudey *et al.*, 2015), masking the effect of fire on nutrient availability in the medium-term (Pereira *et al.*, 2015). Therefore, the initial concentration peak of monovalent cations (Na<sup>+</sup> and K<sup>+</sup>) and NO<sub>3</sub><sup>-</sup> reported in numerous studies could have been counteracted by selective solute leaching during the rainfall events due to the higher mobility of these nutrients in comparison to other ions (Couto-Vazquez & Gonzalez-Prieto, 2006; Dorta Almenar *et al.*, 2015). In addition, the release of PO<sub>4</sub><sup>3-</sup> and SO<sub>4</sub><sup>2-</sup> during the combustion of organic compounds is likely to have had little impact on their concentration in the soil solution of Andisols due to the specific sorption of those anions to the chemically reactive surfaces present in this soil type (Rajan, 1978; Dorta Almenar *et al.*, 2015). According to Strahm & Harrison (2007) the sorption capacity of a soil is specific of the anion considered and follows the order: PO<sub>4</sub><sup>3-</sup> > SO<sub>4</sub><sup>2-</sup> > NO<sub>3</sub><sup>-</sup>, being specific for PO<sub>4</sub><sup>3-</sup>, partially specific for SO<sub>4</sub><sup>2-</sup> and non-specific for NO<sub>3</sub><sup>-</sup>. Consequently, andic constituents can buffer the input of PO<sub>4</sub><sup>3-</sup> and, marginally, SO<sub>4</sub><sup>2-</sup> from the ash through specific sorption to the soil colloids and mask the effect of fire, whereas their impact on NO<sub>3</sub><sup>-</sup> is limited.

These results suggest that the temporal evolution of the fire-impacts on chemical properties is influenced by: i) the initial degree of mineralization and volatilization of SOM compounds that lead to their decrease, and also major changes in its chemical structure; ii) the initial release of nutrients from the oxidation of SOM; and iii) the alteration of the hydrological response of the ecosystem that controls ash and nutrient transport by leaching through the soil profile, dilution in the runoff and erosion processes in the medium-term. The interaction of all these factors can lead to a high level of variability regarding key soil chemical properties related to the ecosystem recovery and, thus, to several post-fire scenarios that should be evaluated independently when designing suitable post-fire restoration treatments. Methods to rapidly screen key soil properties in the post-fire period are, therefore, necessary to design appropriate recovery plans.

#### *Linking soil chemical properties to SOM pools*

The soil chemical properties evaluated here showed, in general, strong association with the TG results. Neris *et al.* (2014) already suggested the suitability of TG as a simple proxy for fire impacts on soil physical and hydrological properties of volcanic soils, whereas Siewert (2004) used TG to rapidly screen key soil properties such as SOM, clay and carbonate content of different soil types and land uses. However, to our knowledge, this is the first study on fire-affected soils that links TG data to soil chemical properties other than SOM. The results obtained here therefore break the ground for developing a rapid proxy for key soil chemical properties from fire-induced medium-term changes in the thermal stability of SOM (TG results).

The results demonstrate that the content of the recalcitrant (in the temperature range 375-550 °C) and, mainly, the refractory pools (in the range 620-640 °C) are directly related to the content of EC<sub>1:5</sub>, pH, P, cations and some anions (SO<sub>4</sub><sup>2-</sup> and NO<sub>3</sub><sup>-</sup>) in the soil solution. De la Rosa *et al.* (2008b) have suggested that weight losses at the refractory pool correspond mainly to charred organic residues whereas Santín *et al.* (2016) reported that the production of pyrogenic OM has its maximum at temperatures over 600 °C. Several studies have previously suggested a direct impact of ash on soil nutrient content, basing this hypothesis on laboratory or field leaching experiments (Marion *et al.*, 1991; Molina *et al.*, 2007; Escudey *et al.*, 2015) or studies of ash composition (Khanna *et al.*, 1994; Pereira *et al.*, 2014a; Santín *et al.*, 2015) and post-fire soil nutrient content (Khanna & Raison, 1986; Andreu *et al.*, 1996; Dorta Almenar *et al.*, 2015). However, unlike these previous studies, we demonstrate a direct quantitative link between the content of charred organic residues in the soil (represented by the SOM refractory pool) and soil nutrient values using a field approach and samples affected by a wildfire.

The absence of correlations for PO<sub>4</sub><sup>3-</sup> and the weak association shown by SO<sub>4</sub><sup>2-</sup> and P can be attributed to the specific adsorption of these anions (Barrow, 1985) to the reactive surface of Andisols as suggested by Dorta Almenar *et al.* (2015). This buffering effect on their concentration in the soil solution may mask their expected response to fire and, thus, interfere with the regressions developed. Additionally, the time since the fire (the sampling campaign was carried out 8-10 months after the fire) and the hydrological and biogeochemical processes occurring in this interval, could have diluted some of the immediate effects of fire on key properties. Therefore, stronger associations between TG data and those nutrients could be expected, for example, for samples collected immediately after the fire and for soil types in which this buffering effect is not present. It is also notable that all the soluble cations



(Ca<sup>2+</sup>, Mg<sup>2+</sup>, Na<sup>+</sup>, K<sup>+</sup>), non-specifically-adsorbed anions (NO<sub>3</sub><sup>-</sup>) and EC<sub>1.5</sub> showed the strongest association to TG data in the temperature range 500-520 °C. Additionally, all of them, together with P, shared a correlation peak at 620-640 °C (Figures 2 and 3). Further studies are needed to determine the compounds responsible for these associations and therefore for the nutrients increase in the post-fire period.

The labile pool showed strong correlations with key properties such as pH (negative) and CEC (positive). It has been reported that the increase of pH after a fire can be related, also to the increase in alkaline salts of the main cations, due to organic acid denaturation (Kutiel & Naveh, 1987; Aznar *et al.*, 2016). Those organic acids include carboxyl and aliphatic C, which are thermally labile organic compounds correspondent to the labile pool (Exo1) (Lopez-Capel *et al.*, 2005; Marinari *et al.*, 2010). Regarding CEC, according to Kaiser *et al.* (2008), the contribution of SOM to CEC can be attributed mainly to the negatively charged sites present in carboxyl C, again one of the main components of the thermally labile pool (Exo1) (Lopez-Capel *et al.*, 2005; Marinari *et al.*, 2010). Therefore, a fire-induced reduction in labile carboxyl and aliphatic C may lead to an increase in pH and a decrease in CEC in the post-fire period. In addition, it is suggested that the direct correlation found between Endo0 and CEC can be related to the direct association between CEC and clay and amorphous minerals typical of volcanic soils. As suggested by Neris *et al.* (2014), Endo0 of air dried soils corresponds to evaporation of water retained at high tensions (clay-controlled microporosity) and CEC depends on the negatively charged sites of clay and clay-like minerals (Kaiser *et al.*, 2008).

TOC and TN of the burned soils evaluated were mainly associated with the recalcitrant pool, whereas the refractory pool also showed lesser correlation for both parameters and the labile pool for TOC. This stronger correlation of TOC and TN with the recalcitrant pool than to the other SOM pools is suggested to be due to the higher recalcitrance of the SOM of the burned soils a consequence of the forest fire, as reported by Neris *et al.* (2014). Actually, the correlations between TG data and TOC and TN for the unburned soils evaluated showed that the degree of correlation was higher and more homogeneous along the three organic pools (data not shown), probably due to the higher amount of organic compounds and more homogeneous distribution along the three pools.

*TG as a proxy for key soil chemical properties in the post-fire period: implications and prospect.*

The evaluation of the fire impacts on soil properties is an essential step for land managers in assessing accurately the ecosystem condition in view of selecting the most appropriate restoration approach. For the vegetation and soil microbiota restoration it is important to evaluate the nutrient availability and its temporal distribution in the post-fire period since nutrients can be limiting factors for their recovery (Caon *et al.*, 2014). Several drivers such as burn severity, fire recurrence and time since fire affect fire impacts on soil properties. Also, environmental factors such as topography, rainfall pattern, vegetation type, litter thickness, soil type, soil moisture, can lead to different post-fire scenarios in terms of nutrient availability. This diversity of factors and drivers limits the accuracy of the fire impacts prediction from simple burn severity metrics and, therefore, a series of different soil analysis, which tend to be expensive and time-consuming, are usually needed to evaluate each post-fire scenario. As an alternative approach, the results obtained in this study suggest that thermal analysis can be used as a rapid and inexpensive predictor of key soil chemical parameters

involved in the ecosystem recovery even several months after the fire. A single calibration step to initially link TG data to site-specific key soil chemical properties evaluated using conventional methods from new or existing datasets is needed. However, once this initial relationship is established, simple regressions allow investigators to predict nutrient availability with a reasonable level of accuracy. Thus, it is suggested that this methodology is particularly useful for assisting land managers to select adequate post-fire restoration actions by providing rapid and inexpensive information on critical variables in post-fire ecosystem recovery potential: nutrient availability and its spatial and temporal distribution.

## CONCLUSIONS

This study examined, for the first time, the use of thermogravimetry (TG) as a proxy for the impacts of fire on nutrient availability. This was done by examining the medium-term effect of a wildfire (8-10 months post-fire) on Andisols and their link to SOM composition using TG. Several soil chemical parameters that are critical in determining ecosystem recovery potential, mainly the concentration of basic cations, TOC or TN, were affected by the fire in the medium-term. However, widely reported fire impacts were not found here probably due to their ephemeral effect and the specific response of Andisols to the increase of some anions and their specific sorption to the short-range order compounds.

The associations found between key soil parameters of burned soils and TG data at specific temperature ranges highlight the influence of specific SOM pools on nutrient availability and other chemical parameters involved in ecosystem recovery in the post-fire period. These are: i) an increase of the thermal stability and recalcitrance of the organic C- and N-forms, ii) a direct quantitative effect of ash content on soluble nutrients in the soil solution, and iii) the importance of labile organic compounds on key properties such as pH or CEC. Additionally, these strong associations enable using TG as predictor of nutrient availability and key

chemical parameters in the medium-term of a post-fire ecosystem. The results of this study suggest that this novel application of an established method can provide, following an initial calibration step, a rapid and inexpensive proxies for key soil parameters relevant for assessing fire-induced ecosystem degradation, which in turn allows implementing the most effective restoration strategies in the post-fire period.

#### ACKNOWLEDGEMENTS

This research has been funded by the *H2020 Marie Skłodowska-Curie Individual Fellowship 2014* “FireAndRiskPrevention” (project number 655993). S.H. Doerr acknowledges support via a *Leverhulme Research Fellowship* (RF-2016-456\2). The authors thank Sue Alston (Swansea University) and Mary Garín (Universidad de La Laguna) for the laboratory assistance and suggestions. We are also grateful to the Colleges of Science and of Engineering (Swansea University) for the wider logistical support.

#### REFERENCES

- Andreu V, Rubio, JL, Forteza, J, Cerni, R. 1996. Postfire effects on soil properties and nutrient losses. *International Journal of Wildland Fire* **6**: 53-58. DOI: 10.1071/Wf9960053.
- Aznar JM, González-Pérez, JA, Badía, D, Martí, C. 2016. At what depth are the properties of a gypseous forest topsoil affected by burning? *Land Degradation & Development* **27**: 1344-1353. DOI: 10.1002/ldr.2258.
- Barrow NJ. 1985. Reactions of anions and cations with variable-charge soils. In *Advances in agronomy*, Brady, NC (ed). Academic Press, Inc.: Orlando, Florida; 183-230.
- Bento-Goncalves A, Vieira, A, Ubeda, X, Martin, D. 2012. Fire and soils: Key concepts and recent advances. *Geoderma* **191**: 3-13. DOI: 10.1016/j.geoderma.2012.01.004.

- Bodi MB, Martin, DA, Balfour, VN, Santín, C, Doerr, SH, Pereira, P, Cerdà, A, Mataix-Solera, J. 2014. Wildland fire ash: Production, composition and eco-hydro-geomorphic effects. *Earth-Science Reviews* **130**: 103-127. DOI: 10.1016/j.earscirev.2013.12.007.
- Cancelo-González J, Rial-Rivas, ME, Diaz-Fierros, F. 2013. Effects of fire on cation content in water: A laboratory simulation study. *International Journal of Wildland Fire* **22**: 667-680. DOI: 10.1071/WF12178.
- Caon L, Vallejo, VR, Ritsema, CJ, Geissen, V. 2014. Effects of wildfire on soil nutrients in Mediterranean ecosystems. *Earth-Science Reviews* **139**: 47-58. DOI: 10.1016/j.earscirev.2014.09.001.
- Certini G. 2005. Effects of fire on properties of forest soils: A review. *Oecologia* **143**: 1-10. DOI: 10.1007/s00442-004-1788-8.
- Couto-Vazquez A, Gonzalez-Prieto, SJ. 2006. Short- and medium-term effects of three fire fighting chemicals on the properties of a burnt soil. *Science of the Total Environment* **371**: 353-361. DOI: 10.1016/j.scitotenv.2006.08.016.
- De la Rosa JM, González-Pérez, JA, González-Vázquez, R, Knicker, H, López-Capel, E, Manning, DAC, González-Vila, FJ. 2008a. Use of pyrolysis/GC-MS combined with thermal analysis to monitor C and N changes in soil organic matter from a Mediterranean fire affected forest. *Catena* **74**: 296-303. DOI: 10.1016/j.catena.2008.03.004.
- De la Rosa JM, Knicker, H, López-Capel, E, Manning, DAC, González-Perez, JA, González-Vila, FJ. 2008b. Direct detection of black carbon in soils by Py-GC/MS, Carbon-13 NMR spectroscopy and thermogravimetric techniques. *Soil Science Society of America Journal* **72**: 258. DOI: 10.2136/sssaj2007.0031.
- Dorta Almenar I, Navarro Rivero, FJ, Arbelo, CD, Rodríguez, A, Notario del Pino, J. 2015. The temporal distribution of water-soluble nutrients from high mountain soils following a

- wildfire within legume scrubland of Tenerife, Canary Islands, Spain. *Catena* **135**: 393-400. DOI: 10.1016/j.catena.2014.09.016.
- Escudey M, Arancibia-Miranda, N, Pizarro, C, Antilen, M. 2015. Effect of ash from forest fires on leaching in volcanic soils. *Catena* **135**: 383-392. DOI: 10.1016/j.catena.2014.08.006.
- Giovannini G, Lucchesi, S, Giachetti, M. 1990. Effects of heating on some chemical-parameters related to soil fertility and plant-growth. *Soil Science* **149**: 344-350
- González-Pérez JA, González-Vila, FJ, Almendros, G, Knicker, H. 2004. The effect of fire on soil organic matter - a review. *Environment International* **30**: 855-870. DOI: 10.1016/j.envint.2004.02.003.
- Iglesias T, Cala, V, Gonzalez, J. 1997. Mineralogical and chemical modifications in soils affected by a forest fire in the Mediterranean area. *Science of the Total Environment* **204**: 89-96. DOI: 10.1016/s0048-9697(97)00173-3.
- Inbar A, Lado, M, Sternberg, M, Tenau, H, Ben-Hur, M. 2014. Forest fire effects on soil chemical and physicochemical properties, infiltration, runoff, and erosion in a semiarid Mediterranean region. *Geoderma* **221**: 131-138. DOI: 10.1016/j.geoderma.2014.01.015.
- Instituto Canario de Estadística. 2013. Estadísticas de incendios forestales en Canarias. <http://www.gobiernodecanarias.org/istac/jaxi-istac/menu.do?uripub=urn:uuid:1c9aed0f-ad65-4b50-b2a2-63d1559cb720>.
- Jain TB, Pilliod, DS, Graham, RT, Lentile, LB, Sandquist, JE. 2012. Index for characterizing post-fire soil environments in temperate coniferous forests. *Forests* **3**: 445-466. DOI: 10.3390/f3030445.
- Johnson D, Murphy, JD, Walker, RF, Glass, DW, Miller, WW. 2007. Wildfire effects on forest carbon and nutrient budgets. *Ecological Engineering* **31**: 183-192. DOI: 10.1016/j.ecoleng.2007.03.003.

- Kaiser M, Ellerbrock, RH, Gerke, HH. 2008. Cation exchange capacity and composition of soluble soil organic matter fractions. *Soil Science Society of America Journal* **72**: 1278-1285. DOI: 10.2136/sssaj2007.0340.
- Keane RE, Dillon, G, Jain, T, Hudak, A, Morgan, P, Karau, E, Sikkink, P, Silverstein, R. 2012. The problems with fire severity and its application in fire management. USDA Forest Service, Rocky Mountain Research Station: Missoula, Montana.
- Keeley JE. 2009. Fire intensity, fire severity and burn severity: A brief review and suggested usage. *International Journal of Wildland Fire* **18**: 116-126. DOI: 10.1071/WF07049.
- Khanna PK, Raison, RJ. 1986. Effect of fire intensity on solution chemistry of surface soil under a eucalyptus-pauciflora forest. *Australian Journal of Soil Research* **24**: 423-434. DOI: 10.1071/Sr9860423.
- Khanna PK, Raison, RJ, Falkiner, RA. 1994. Chemical-properties of ash derived from eucalyptus litter and its effects on forest soils. *Forest Ecology and Management* **66**: 107-125. DOI: 10.1016/0378-1127(94)90151-1.
- Kutiel P, Inbar, M. 1993. Fire impacts on soil nutrients and soil-erosion in a Mediterranean pine forest plantation. *Catena* **20**: 129-139. DOI: 10.1016/0341-8162(93)90033-L.
- Kutiel P, Naveh, Z. 1987. The effect of fire on nutrients in a pine forest soil. *Plant and Soil* **104**: 269-274. DOI: 10.1007/Bf02372541.
- Lasanta T, Cerdà, A. 2005. Long-term erosional responses after fire in the Central Spanish Pyrenees - 2. Solute release. *Catena* **60**: 81-100. DOI: 10.1016/j.catena.2004.09.005.
- Lopez-Capel E, Sohi, SP, Gaunt, JL, Manning, DAC. 2005. Use of thermogravimetry-differential scanning calorimetry to characterize modelable soil organic matter fractions. *Soil Science Society of America Journal* **69**: 930-930. DOI: 10.2136/sssaj2005.0136.

- Marinari S, Dell'Abate, MT, Brunetti, G, Dazzi, C. 2010. Differences of stabilized organic carbon fractions and microbiological activity along Mediterranean Vertisols and Alfisols profiles. *Geoderma* **156**: 379-388. DOI: 10.1016/j.geoderma.2010.03.007.
- Marion GM, Moreno, JM, Oechel, WC. 1991. Fire severity, ash deposition, and clipping effects on soil nutrients in chaparral. *Soil Science Society of America Journal* **55**: 235-240. DOI: 10.2136/sssaj1991.03615995005500010040x.
- Marzol MV. 2008. Temporal characteristics and fog water collection during summer in Tenerife (Canary Islands, Spain). *Atmospheric Research* **87**: 352-361. DOI: 10.1016/j.atmosres.2007.11.019.
- Merino A, Ferreiro, A, Salgado, J, Fonturbel, MT, Barros, N, Fernandez, C, Vega, JA. 2014. Use of thermal analysis and solid-state C-13 CP-MAS NMR spectroscopy to diagnose organic matter quality in relation to burn severity in Atlantic soils. *Geoderma* **226**: 376-386. DOI: 10.1016/j.geoderma.2014.03.009.
- Molina M, Fuentes, R, Calderon, R, Escudey, M, Avendano, K, Gutierrez, M, Chang, AC. 2007. Impact of forest fire ash on surface charge characteristics of Andisols. *Soil Science* **172**: 820-834. DOI: 10.1097/ss.0b013e31814cee44.
- Mora JL, Armas-Herrera, CM, Guerra, JA, Arbelo, CD, Rodríguez-Rodríguez, A, Notario del Pino, JS. 2016. A comparative study of long-term effects on fire-affected volcanic soils in two different ecosystems in the Canary Islands. *Land Degradation & Development* **27**: 1489-1500. DOI: 10.1002/ldr.2458.
- Moreno JM, Oechel, WC. 1989. A simple method for estimating fire intensity after a burn in California chaparral. *Acta Oecologica-Oecologia Plantarum* **10**: 57-68
- Neris J, Doerr, SH, Tejedor, M, Jiménez, C, Hernández-Moreno, JM. 2014. Thermal analysis as a predictor for hydrological parameters of fire-affected soils. *Geoderma* **235**: 240-249. DOI: 10.1016/j.geoderma.2014.07.018.



- Neris J, Tejedor, M, Fuentes, J, Jiménez, C. 2013. Infiltration, runoff and soil loss in Andisols affected by forest fire (Canary Islands, Spain). *Hydrological Processes* **27**: 2814-2824. DOI: 10.1002/hyp.9403.
- Parsons A, Robichaud, PR, Lewis, SA, Napper, C, Clark, JT. 2010. Field guide for mapping post-fire soil burn severity. Gen. Tech. Rep. RMRS-GTR-243. In *Gen. Tech. Rep. RMRS-GTR-243*. U.S. Department of Agriculture, Forest Service, Rocky Mountain Research Station: Fort Collins, CO; 49.
- Pereira P, Cerdà, A, Jordán, A, Martínez-Zavala, L, Mataix-Solera, J, Arcenegui, V, Misiune, I, Keesstra, S, Novara, A. 2016. Short-term vegetation recovery after a grassland fire in Lithuania: The effects of fire severity, slope position and aspect. *Land Degradation & Development* **27**: 1523-1534. DOI: 10.1002/ldr.2498.
- Pereira P, Jordán, A, Cerdà, A, Martin, D. 2015. Editorial: The role of ash in fire-affected ecosystems. *Catena* **135**: 337-339. DOI: 10.1016/j.catena.2014.11.016.
- Pereira P, Ubeda, X, Martin, D, Mataix-Solera, J, Cerda, A, Burguet, M. 2014a. Wildfire effects on extractable elements in ash from a *Pinus pinaster* forest in Portugal. *Hydrological Processes* **28**: 3681-3690. DOI: 10.1002/hyp.9907.
- Pereira P, Ubeda, X, Martin, D, Mataix-Solera, J, Cerdà, A, Burguet, M. 2014b. Wildfire effects on extractable elements in ash from a *Pinus pinaster* forest in Portugal. *Hydrological Processes* **28**: 3681-3690. DOI: 10.1002/hyp.9907.
- Plante AF, Fernández, JM, Leifeld, J. 2009. Application of thermal analysis techniques in soil science. *Geoderma* **153**: 1-10. DOI: 10.1016/j.geoderma.2009.08.016.
- Rajan SSS. 1978. Sulfate adsorbed on hydrous alumina, ligands displaced, and changes in surface-charge. *Soil Science Society of America Journal* **42**: 39-44. DOI: 10.2136/sssaj1978.03615995004200010009x.

- Rodríguez M, Neris, J, Tejedor, M, Jiménez, C. 2010. Soil temperature regimes from different latitudes on a subtropical island (Tenerife, Spain). *Soil Science Society of America Journal* **74**: 1662. DOI: 10.2136/sssaj2009.0436.
- Ryan KC. 2002. Dynamic interactions between forest structure and fire behavior in boreal ecosystems. *Silva Fennica* **36**: 13-39. DOI: 10.14214/sf.548.
- Santín C, Doerr, SH. 2016. Fire effects on soils: The human dimension. *Philosophical Transactions of the Royal Society B: Biological Sciences* **371**: 20150171. DOI: 10.1098/rstb.2015.0171.
- Santín C, Doerr, SH, Merino, A, Bryant, R, Loader, NJ. 2016. Forest floor chemical transformations in a boreal forest fire and their correlations with temperature and heating duration. *Geoderma* **264**: 71-80. DOI: 10.1016/j.geoderma.2015.09.021.
- Santín C, Doerr, SH, Otero, XL, Chafer, CJ. 2015. Quantity, composition and water contamination potential of ash produced under different wildfire severities. *Environmental Research* **142**: 297-308. DOI: 10.1016/j.envres.2015.06.041.
- Shakesby RA, Doerr, SH. 2006. Wildfire as a hydrological and geomorphological agent. *Earth-Science Reviews* **74**: 269-307. DOI: 10.1016/j.earscirev.2005.10.006.
- Siewert C. 2004. Rapid screening of soil properties using thermogravimetry. *Soil Science Society of America Journal* **68**: 1656-1661. DOI: 10.2136/sssaj2004.1656.
- Soil Survey Staff. 1996. Soil survey laboratory methods manual. In *Soil Survey Investigations Report No. 42, version 3.0*. USDA-NRCS: Lincoln, NE; 716.
- Soil Survey Staff. 1999. Soil Taxonomy. A basic system of soil classification for making and interpreting soil surveys. N.R.C.S. USDA: Washington, D.C.
- Strahm BD, Harrison, RB. 2007. Mineral and organic matter controls on the sorption of macronutrient anions in variable-charge soils. *Soil Science Society of America Journal* **71**: 1926-1933. DOI: 10.2136/sssaj2006.0424.

Tejedor M, Jiménez, C, Rodríguez, M, Neris, J. 2009. Controversies in the definition of "Iso" soil temperature regimes. *Soil Science Society of America Journal* **73**: 983-988. DOI: 10.2136/sssaj2008.0236.

Wang C, Wang, G, Wang, Y, Rafique, R, Ma, L, Hu, L, Luo, Y. 2016. Fire alters vegetation and soil microbial community in alpine meadow. *Land Degradation & Development* **27**: 1379-1390. DOI: 10.1002/ldr.2367.

Accepted Article

Table 1: Key chemical parameters of unburned (U) and burned (B) soils per zone. Mean and standard deviation (SD) of pH, cation exchange capacity (CEC – cmolc kg<sup>-1</sup>), soil salinity (EC<sub>1:5</sub> – μScm<sup>-1</sup>), main anions and cations in the soil solution (mmol<sub>c</sub> l<sup>-1</sup>), total organic carbon (TOC- g kg<sup>-1</sup>), total nitrogen (TN - g kg<sup>-1</sup>) and available P (P – mg kg<sup>-1</sup>) were calculated (n=3). Σanions<sub>1:5</sub> value does not include Cl<sup>-</sup> nor alkalinity.

Site	1		2		3		4		5	
Burn condition	U	B	U	B	U	B	U	B	U	B
pH	5.6	6.2	6.5	7.2	6.3	7.1	6.6	6.5	6.4	6.4
SD	0.2	0.4	0.3	0.3	0.9	0.6	0.0	0.2	0.2	0.0
CEC	33.4	17.0	21.3	21.7	36.1	24.9	26.8	31.6	25.8	21.4
SD	4.8	6.8	6.5	3.6	3.4	2.7	6.5	3.9	2.1	1.0
EC <sub>1:5</sub>	301.3	481.0	166.5	195.9	428.0	655.0	124.5	143.8	135.5	141.0
SD	75.6	121.7	109.6	113.0	156.5	273.9	27.1	30.0	15.1	17.1
SO <sub>4</sub> <sup>2-</sup>	0.61	0.36	0.69	0.53	0.56	0.92	0.77	0.74	0.63	0.52
SD	0.13	0.05	0.08	0.04	0.08	0.41	0.03	0.04	0.1	0.04
PO <sub>4</sub> <sup>3-</sup>	0.01	0.02	0.04	0.03	0.03	0.03	0.04	0.03	0.02	0.03
SD	0.01	0	0.01	0	0.01	0.01	0.01	0	0	0.02
NO <sub>3</sub> <sup>-</sup>	1.88	4.01	0.38	0.26	2.67	3.89	0.40	0.40	0.19	0.22
SD	0.83	1.52	0.19	0.02	1.27	1.69	0.06	0.03	0.03	0.01
Σanions <sub>1:5</sub>	3.75	5.52	2.63	2.54	5.10	6.43	2.72	2.62	2.05	2.04
SD	0.72	1.65	0.56	0.65	1.14	1.57	0.54	0.53	0.42	0.44
Ca <sup>2+</sup>	0.77	1.76	0.50	0.57	1.33	2.52	0.23	0.25	0.11	0.26
SD	0.3	0.76	0.53	0.48	0.36	1.34	0.13	0.08	0.02	0.03
Mg <sup>2+</sup>	0.72	0.99	0.33	0.34	0.90	1.71	0.15	0.20	0.07	0.18
SD	0.25	0.26	0.33	0.28	0.32	0.96	0.01	0.06	0.01	0.02
Na <sup>+</sup>	1.14	0.92	0.78	0.71	1.06	1.22	0.54	0.57	0.69	0.59
SD	0.14	0.18	0.17	0.15	0.36	0.29	0.06	0.08	0.08	0.11
K <sup>+</sup>	0.29	0.50	0.32	0.34	0.50	0.59	0.32	0.40	0.28	0.22
SD	0.06	0.16	0.22	0.12	0.3	0.27	0.07	0.06	0.03	0.02
Σcations <sub>1:5</sub>	2.92	4.18	1.93	1.96	3.79	6.03	1.25	1.43	1.16	1.24
SD	0.35	0.52	0.21	0.18	0.35	0.81	0.17	0.17	0.28	0.19
TOC	174.0	90.4	95.1	52.9	156.1	122.4	72.0	72.2	83.0	65.3
SD	20.1	35.1	47.2	6.5	60.9	20.4	25.3	18.3	16.5	14.1
TN	11.6	9.8	4.1	2.6	7.7	5.0	3.5	3.6	4.0	2.6
SD	0.3	2.4	2.0	0.8	1.3	1.2	1.4	0.7	0.8	0.6
P	26.0	14.3	17.8	43.5	46.0	27.1	14.3	14.3	7.7	13.0
SD	6.0	2.1	13.3	7.3	16.4	4.4	5.1	1.5	4.6	1.8

Table 2: Significance of effect of site, fire and site × fire on key chemical soil parameters.

Two-way ANOVA (site x fire; n=30) for pH, cation exchange capacity (CEC), soil salinity ( $EC_{1:5}$ ), main anions and cations in the soil solution, total organic carbon (TOC), total nitrogen (TN) and available P (P) were evaluated (\*: significant at  $p < 0.05$ ).

Main effect	Site	Fire	Site x Fire
pH	0.008*	0.018*	0.244
CEC	0.013*	0.004*	0.004*
$EC_{1:5}$	0.000*	0.090	0.973
$SO_4^{2-}$	0.000*	0.122	0.000*
$PO_4^{3-}$	0.654	0.278	0.718
$NO_3^-$	0.000*	0.538	0.096
$\Sigma anions_{1:5}$	0.000*	0.155	0.667
$Ca^{2+}$	0.000*	0.004*	0.386
$Mg^{2+}$	0.000*	0.004*	0.366
$Na^+$	0.000*	0.605	0.335
$K^+$	0.012*	0.126	0.321
$\Sigma cations_{1:5}$	0.000*	0.093	0.977
TOC	0.001*	0.007*	0.293
TN	0.000*	0.011*	0.361
P	0.000*	0.333	0.004*

Table 3: Regression parameters for key chemical soil parameters and the typical thermo-oxidative steps (Exo1, Exo2 and Exo3) and 10 °C temperature range steps.  $r^2$  for pH, soil salinity ( $EC_{1:5}$ ), cation exchange capacity (CEC), main anions and cations in the soil solution, total organic carbon (TOC), total nitrogen (TN) and available P (P) were calculated. Data transformed as necessary (Box-Cox). Temperature range (°C) for the maximum  $r^2$  and regression equation ( $y = \beta x + \varepsilon$ ) were calculated for the 10 °C temperature range steps.

Soil parameter	Exo1	Exo2	Exo3	10 °C temperature range steps		
				Temp.range (°C)	$r^2$	Regression equation
pH	-	-	-	220-230	0.611	$y = -1288.6x + 8.7$
$(EC_{1:5})^{-1}$	0.740	0.815	-	510-520	0.820	$y = -3.2x + 0.1$
CEC	0.334	-	0.566	290-300	0.590	$y = 2366.4x + 11.9$
$(SO_4^{2-})^{-1/2}$	-	-	-	170-180	0.402	$y = 640.0x + 0.2$
$(PO_4^{3-})^{-1/2}$	-	-	-	-	-	-
$(NO_3)^{-1}$	0.468	0.536	-	490-500	0.770	$y = -1402.2x + 5.8$
$(\sum \text{anions}_{1:5})^{-1}$	0.591	0.707	-	500-510	0.843	$y = -130.6x + 0.6$
$(Ca^{2+})^{-1/2}$	0.757	0.828	-	500-510	0.838	$y = -618.5x + 2.7$
$\text{Ln}(Mg^{2+})$	0.759	0.870	-	500-510	0.870	$y = 1028.5x - 3.0$
$(Na^+)^{-1}$	0.646	0.743	-	500-510	0.756	$y = -399.1x + 2.2$
$(K^+)^{-1/2}$	0.437	0.436	-	500-510	0.493	$y = -250.8x + 2.2$
$(\sum \text{cations}_{1:5})^{-1}$	0.729	0.790	-	500-510	0.812	$y = -266.3x + 1.1$
$(TOC)^{-1/2}$	-	0.401	-	400-410	0.913	$y = -24.3x + 0.5$
$(TN)^{-1/2}$	0.321	0.398	-	460-470	0.827	$y = -227.5x + 2.6$
$\text{Ln}(P)$	-	-	-	230-240	0.391	$y = -894.1x + 4.6$

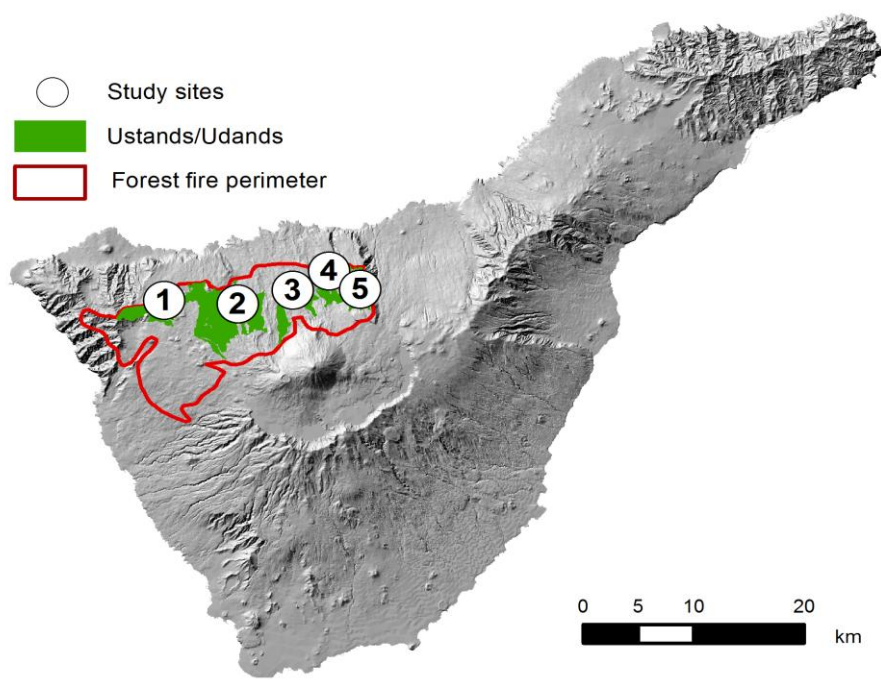


Figure 1: Andisols (Udands and Ustands), burned area and study sites location in Tenerife (Canary Islands, Spain).

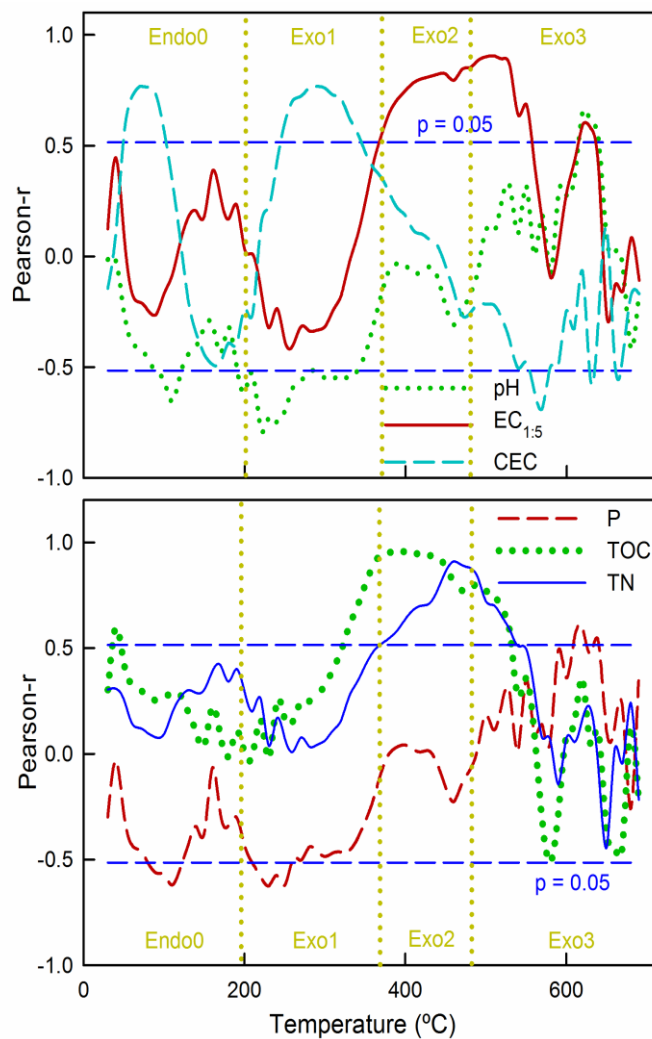


Figure 2: Pearson-r coefficient (y-axis) for the weight losses at different 10 oC temperature range steps using TG (x-axis) and: a) pH, electrical conductivity (EC1:5) and cation exchange capacity (CEC); b) available phosphorus (P), total organic carbon (TOC) and total nitrogen (TN). The horizontal lines represent the significance level for  $p < 0.05$ .



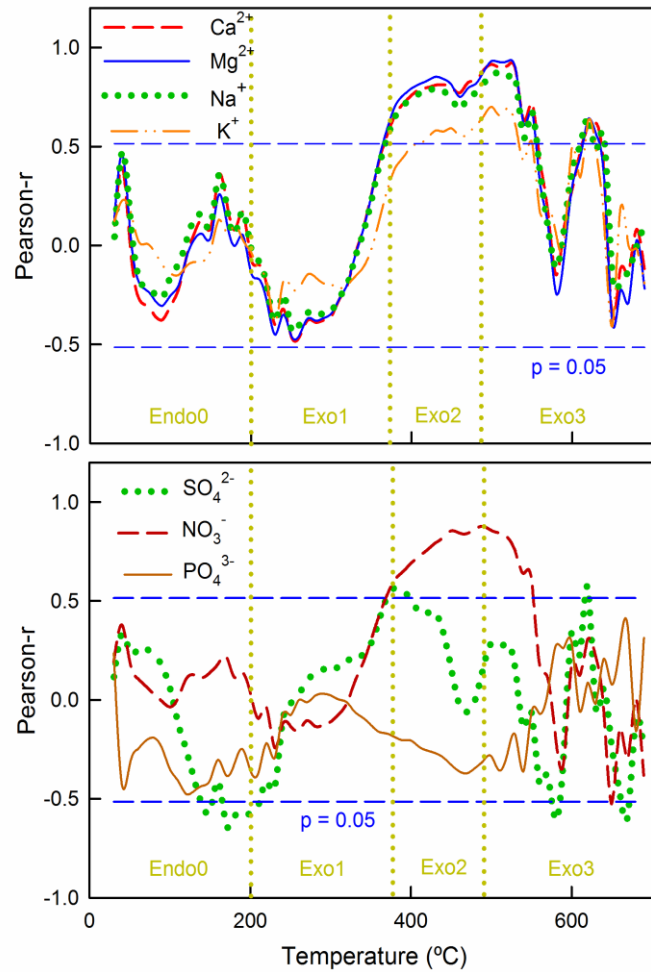


Figure 3: Pearson-r coefficient (y-axis) for the weight losses at different 10 oC temperature range steps using TG (x-axis) and: a) cations in the soil solution (Ca<sup>2+</sup>, Mg<sup>2+</sup>, Na<sup>+</sup> and K<sup>+</sup>); b) anions in the soil solution (SO<sub>4</sub><sup>2-</sup>, NO<sub>3</sub><sup>-</sup> and PO<sub>4</sub><sup>3-</sup>). The horizontal lines represent the significance level for p<0.05.