

Miquel Arias | Portfolio

Architecture 2011-2017

CONTENTS

- 2017 | CampoHaMort _____ pag 04
- 2017 | In between _____ pag 12
- 2016 | Frankenstein _____ pag 16
- 2016 | Nautic center in Porto _____ pag 22
- 2015 | Roma Ager _____ pag 30
- 2015 | Student Housing 22@ _____ pag 38

CampoHaMort

Type: Academic - ETSAV / Polytechnic University of Catalonia

Date: January 2017

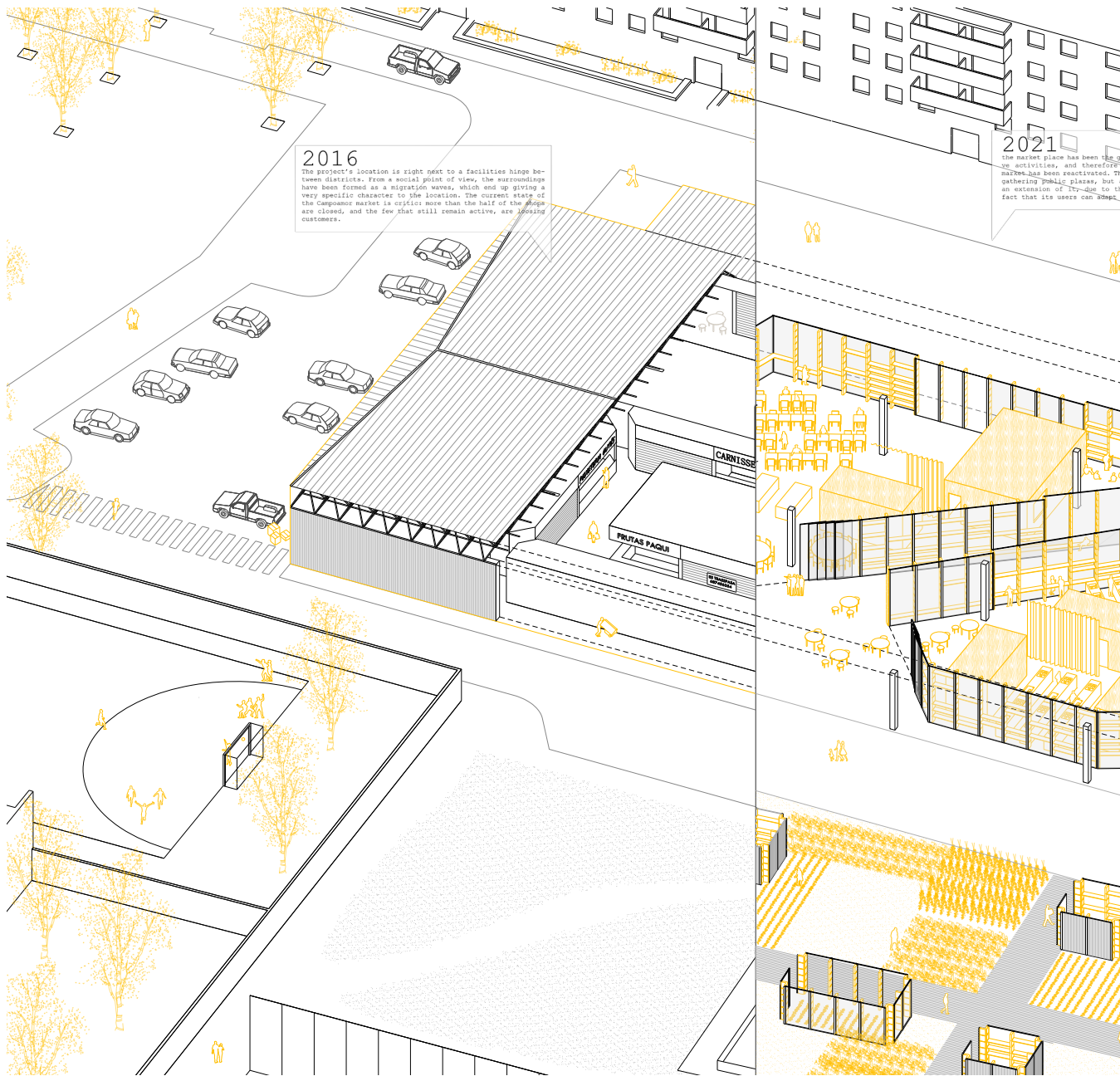
Team: Albert Agundez & Xavi Martín

The project's location is right next to a facilities hinge between districts. From a social point of view, the surroundings have been formed as a migration waves, which end up giving a very specific character to the location. The current state of the Campoamor market is critic: more than the half of the shops are closed, and the few that still remain active, are losing customers.

Our proposal tries to create an association, whose goal is to reactivate the market and the whole district. The source of this new market and association will be the food that restaurants, other markets can not offer to their clients, but are still edible and are still in good conditions for human's use. The association will transform these goods, into edible food. It will be a selling point too, and people will be able to come and have something to eat in the social restaurant. It will also take care of urban croplands, and some events and activities will be organized for people.

From the very beginning some empty plots were detected throughout the surroundings. These won't be overlooked. Instead, they are a opportunity to create an activity connectivity that will grant a good interaction between people from the same district. so this association will be useful to conquer these empty plots, with the constructed module that is used in the market, and that gives response to flexibility needs and easyness of construction in order to adapt it to different necessities.



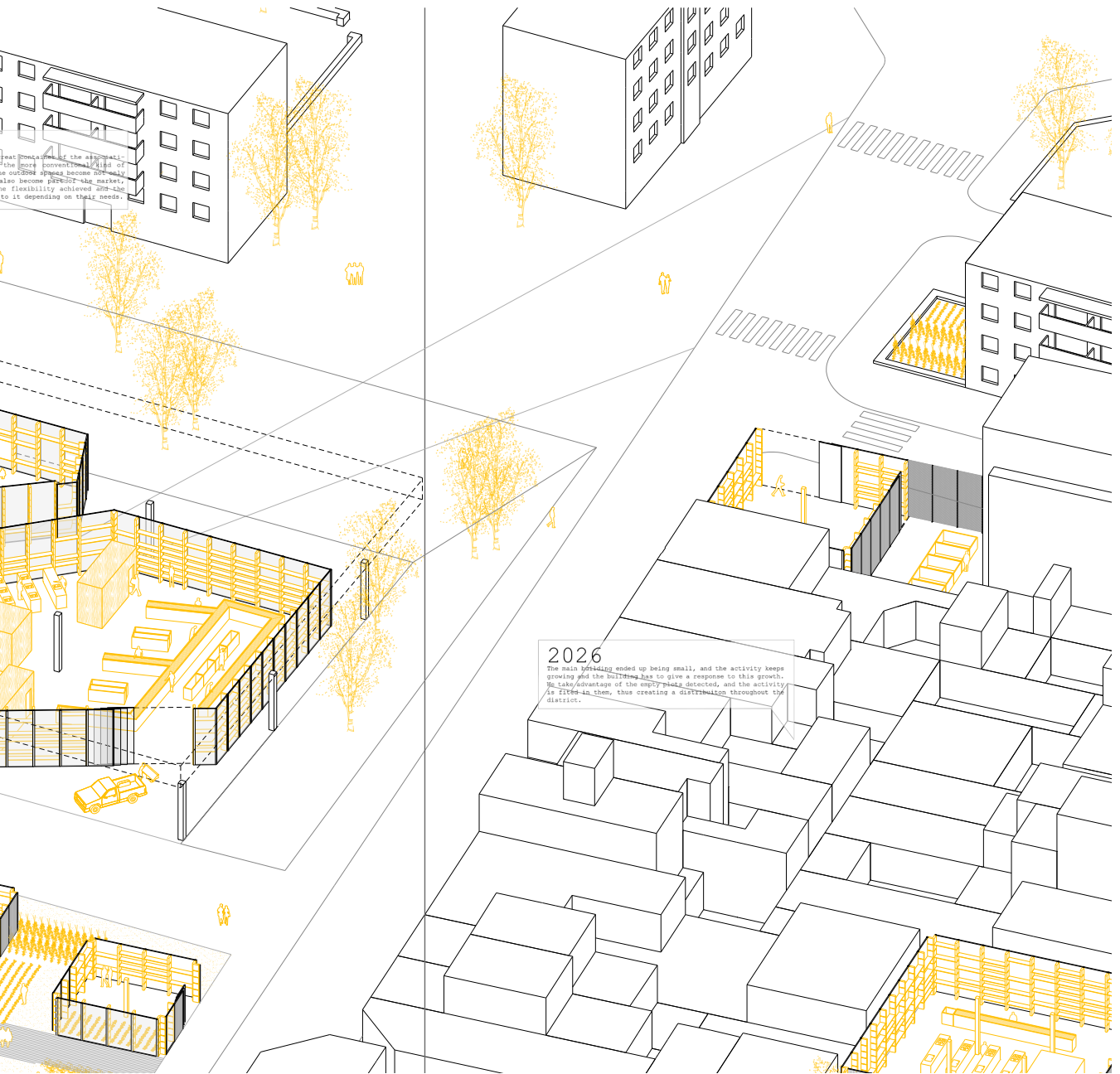


2016

The project's location is right next to a facilities hinge between districts. From a social point of view, the surroundings have been formed as a migration waves, which end up giving a very specific character to the location. The current state of the Caspenser market is obvious: more than half of the stalls are closed, and the few that still remain active, are losing customers.

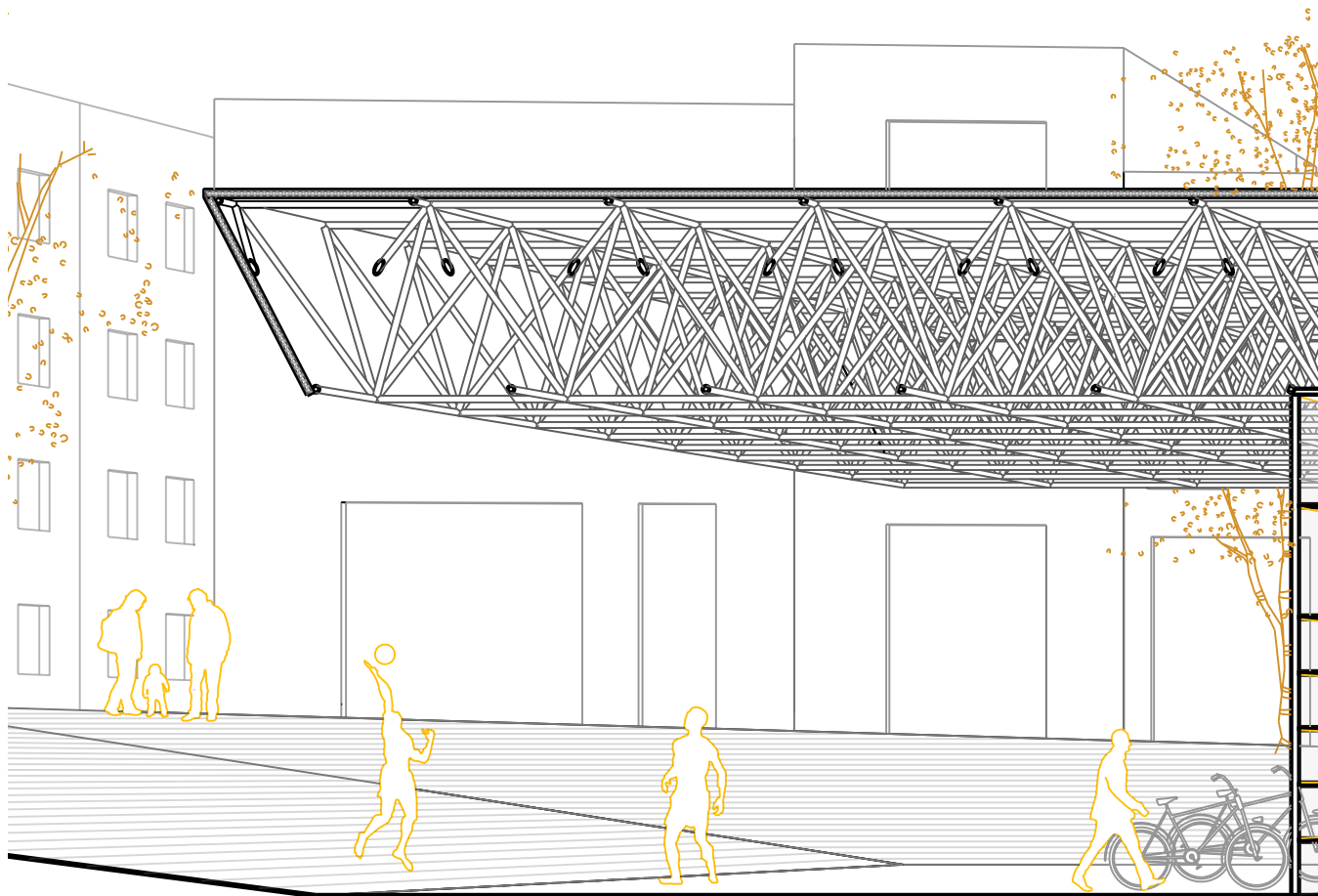
2021

the market place has been the of
ve activities; and therefore
market has been reactivated. Th
gathering public places, but
an extension of 77-sq-m to 13
fact that its users can adapt



2026

The main building ended up being small, and the activity keeps growing and the buildings had to give a response to this growth. We take advantage of the empty space detected, and the activity is distributed in them, thus creating a distribution throughout the district.









Frankenstein

Type: Workshop - Porto academy'16

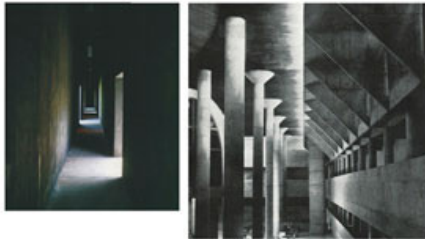
Date: July 2016

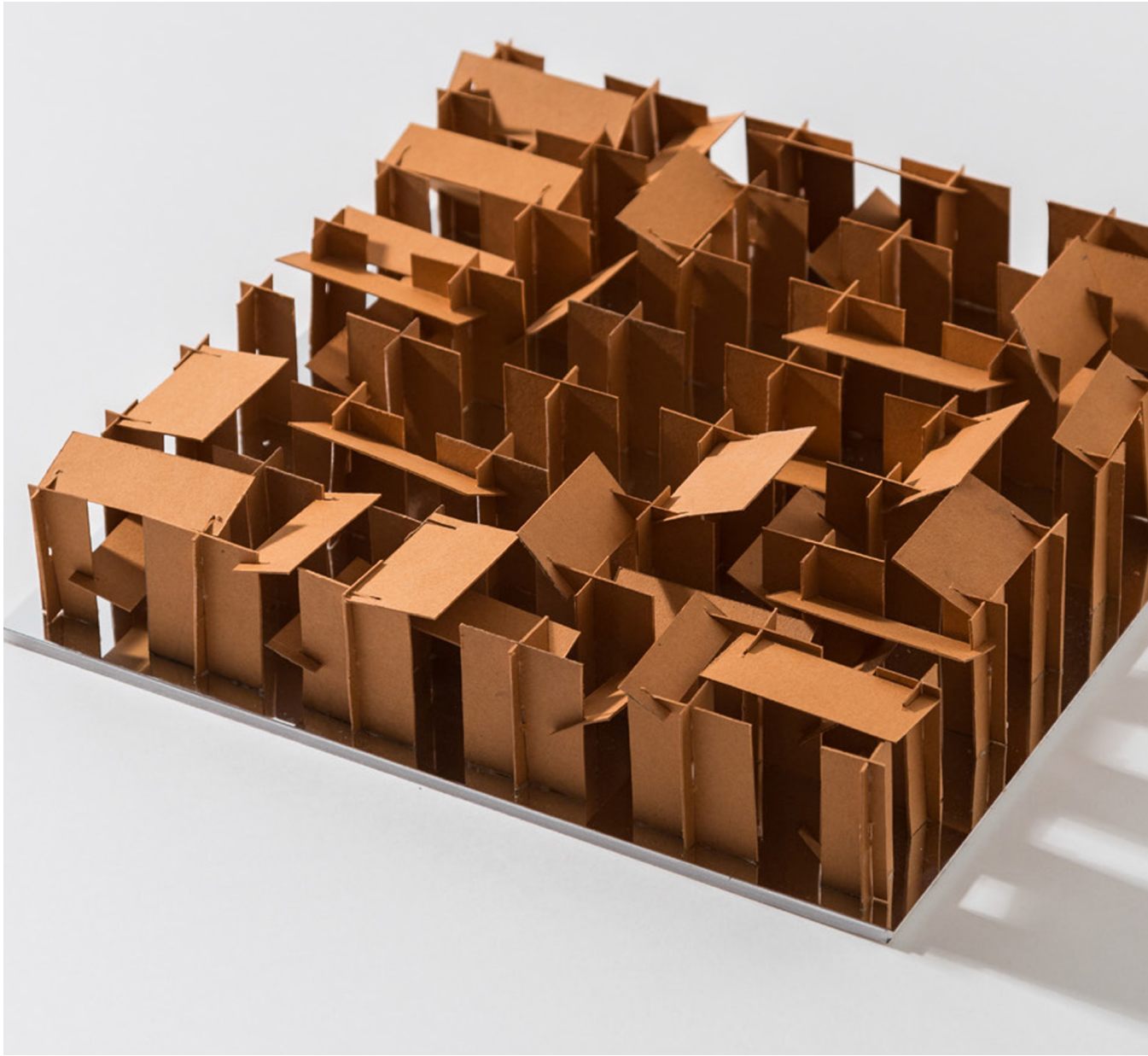
Team: Marta Gayoso

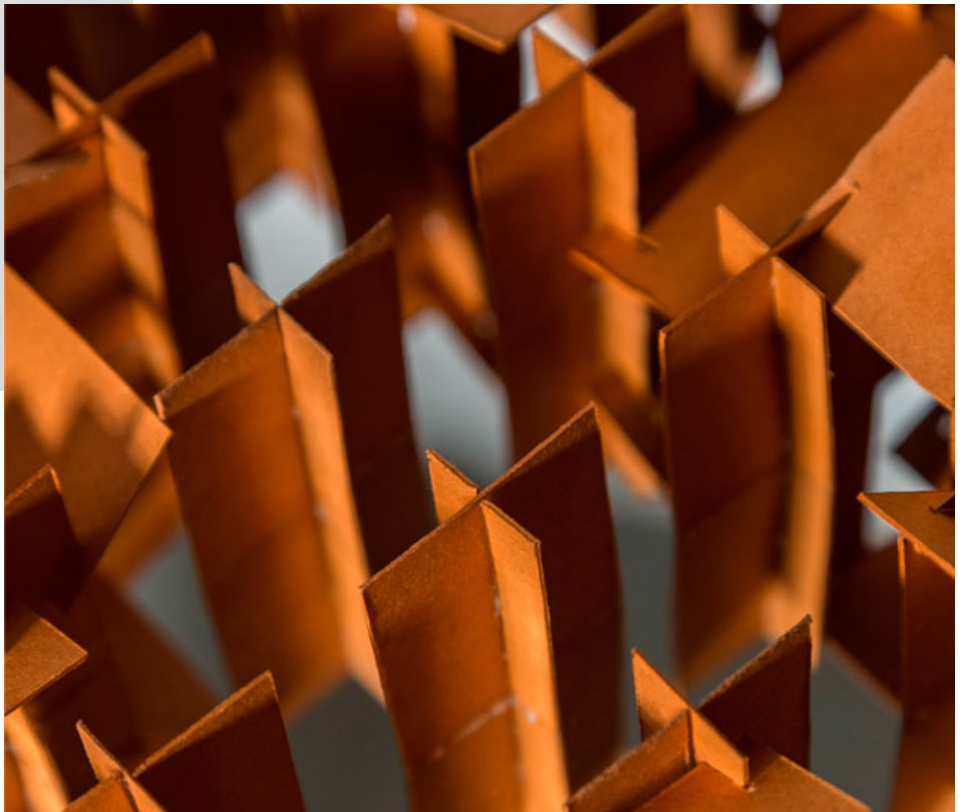
This is an exercise around the material condition of architecture. The workshop proposes the students to understand the material issue in architecture, as a projective operation, which have, at their core, the desire to build a certain quality of environment that would define the user's experience. Therefore we arrive at the project's material system obliquely, as the result of a search to build a particular atmosphere, a specific sensory, visual, acoustic and cultural experience.

The workshop practices with the students the ability to read, understand, interpret and dissect different environment qualities to then -through material manipulation and experimentation - create spaces which have a precise and relevant character, from the point of view of the experience they build.

The arrival to the architectural form is the result of the articulation between Relations, Atmosphere and Material System. There is no thesis, but coherence in the construction of a visual memory capable of communicating projectual intentions, objectives and strategies coherent with one another. We operate starting from images association games, understanding, on one hand, that all projectual design practice is part of a cultural context determined by the Architectural Institution and on the other hand, there is an associative and open way of knowledge, of multiple-entry, non-linear and chaotic from which the projectual exercise is tributary and where the world of visuality and image is a powerful vehicle for communication and learning.







In between / Children's Playschool

Type: Academic competition - archmedium

Date: October 2016

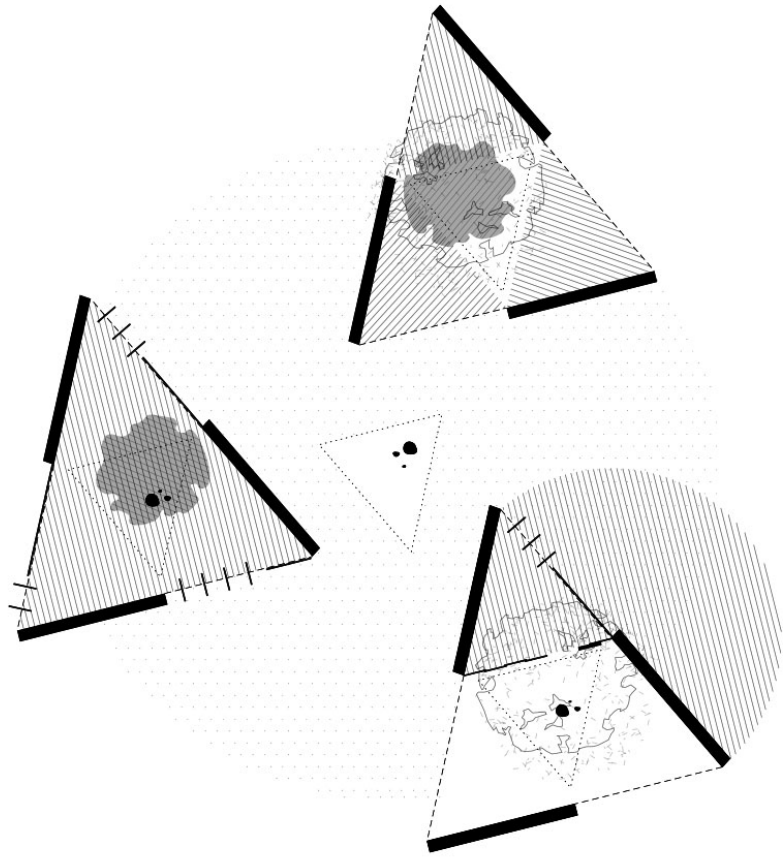
Team: Albert Agundez, Guillem Bigas & Guillem Canudas

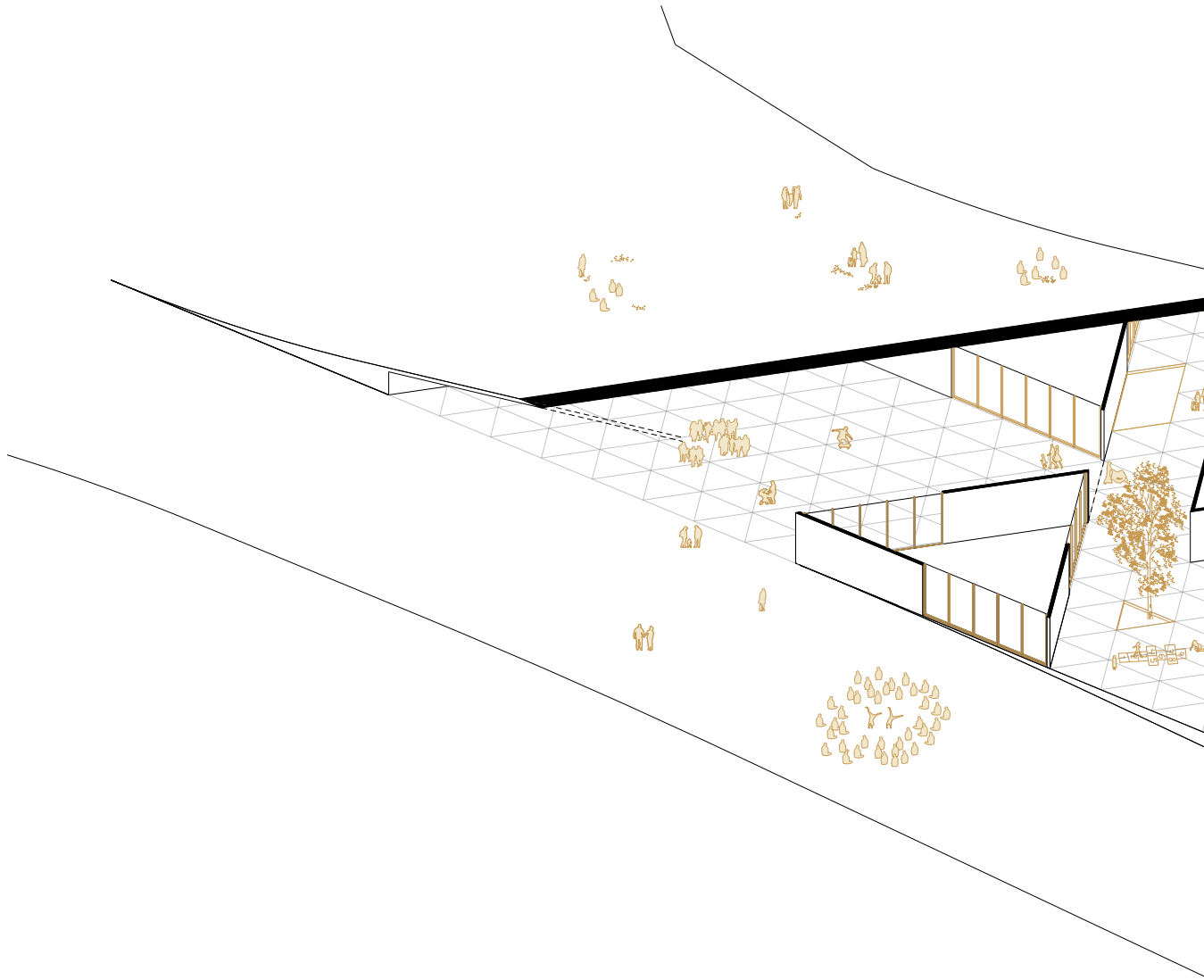
Award: Honorabel mention

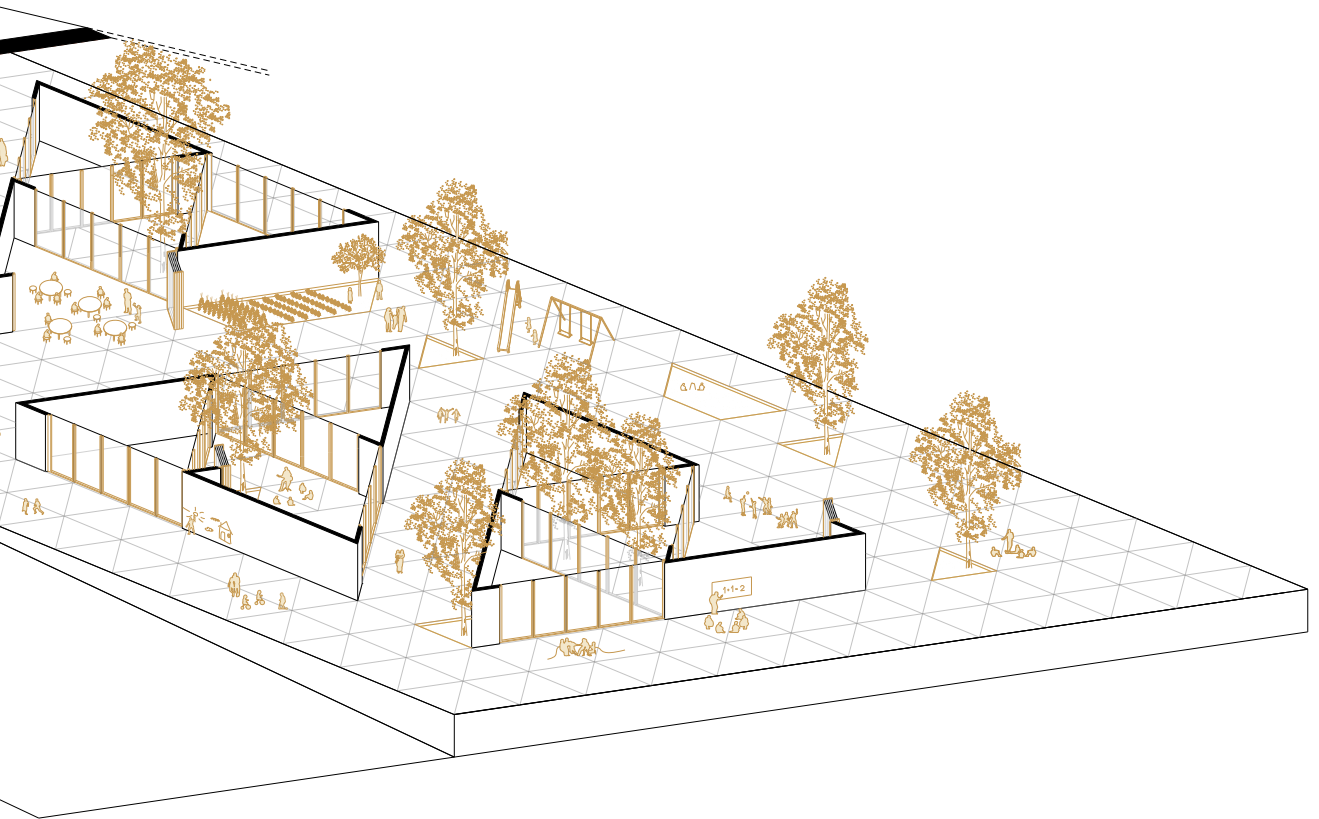
The site is conceived as a powerful one for its location near the water but at the same time, for having a direct visual connection with downtown Amsterdam, and being directly connected with the city center. The project crystalizes this duality, offering a direct access to the water creating an urban beach, and a view deck over it, and at the same time it creates a slope for people to gather and have a rest looking back, towards the city center and being an amphitheater for outdoor movie nights when Pluck de Nacht open air film festival occurs. This space can be used in so many other ways. It becomes a public plaza, a place where people can gather and enjoy the outdoor space.

The cultural center and the nursery school are conceived as small elements distributed through the site creating different sized semipublic spaces, that can serve not only the cultural center and the nursery school when working, but also can turn into a great public space whenever needed to.

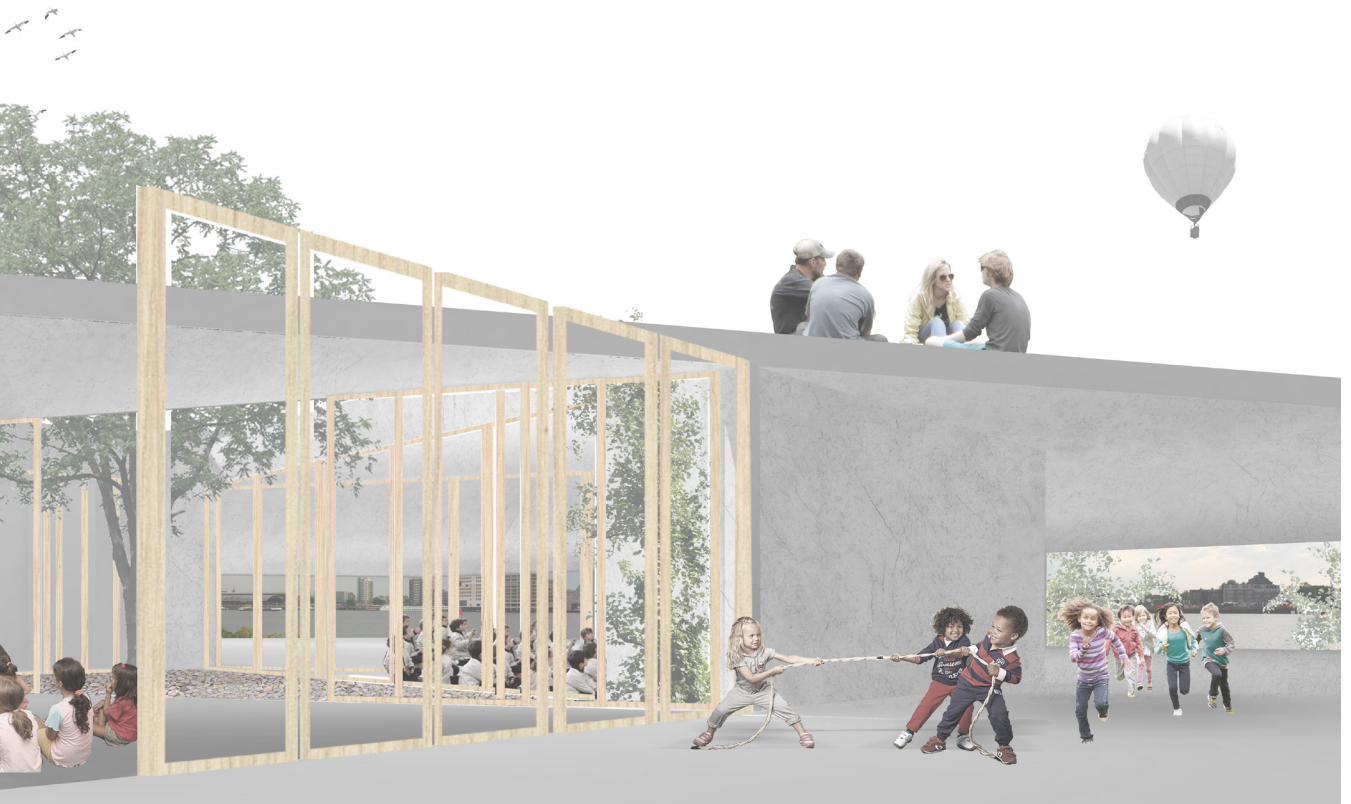
The education nowadays tends to look for the transversality between not only subjects but also between students. The school is organized into small units composed of 3 different sized classes, gathered around a private common courtyard. Every class can be related with the ones next to it. They can be used as 3 independent classes but they can also be converted into one bigger classroom. Doing so, we get the transversality needed. The classes can also be extended to the semipublic space that flows between the units, offering the possibility of doing











Nautic Center in Porto

Type: Academic - FAUP / University of Porto

Date: June 2016

Team: Individual work

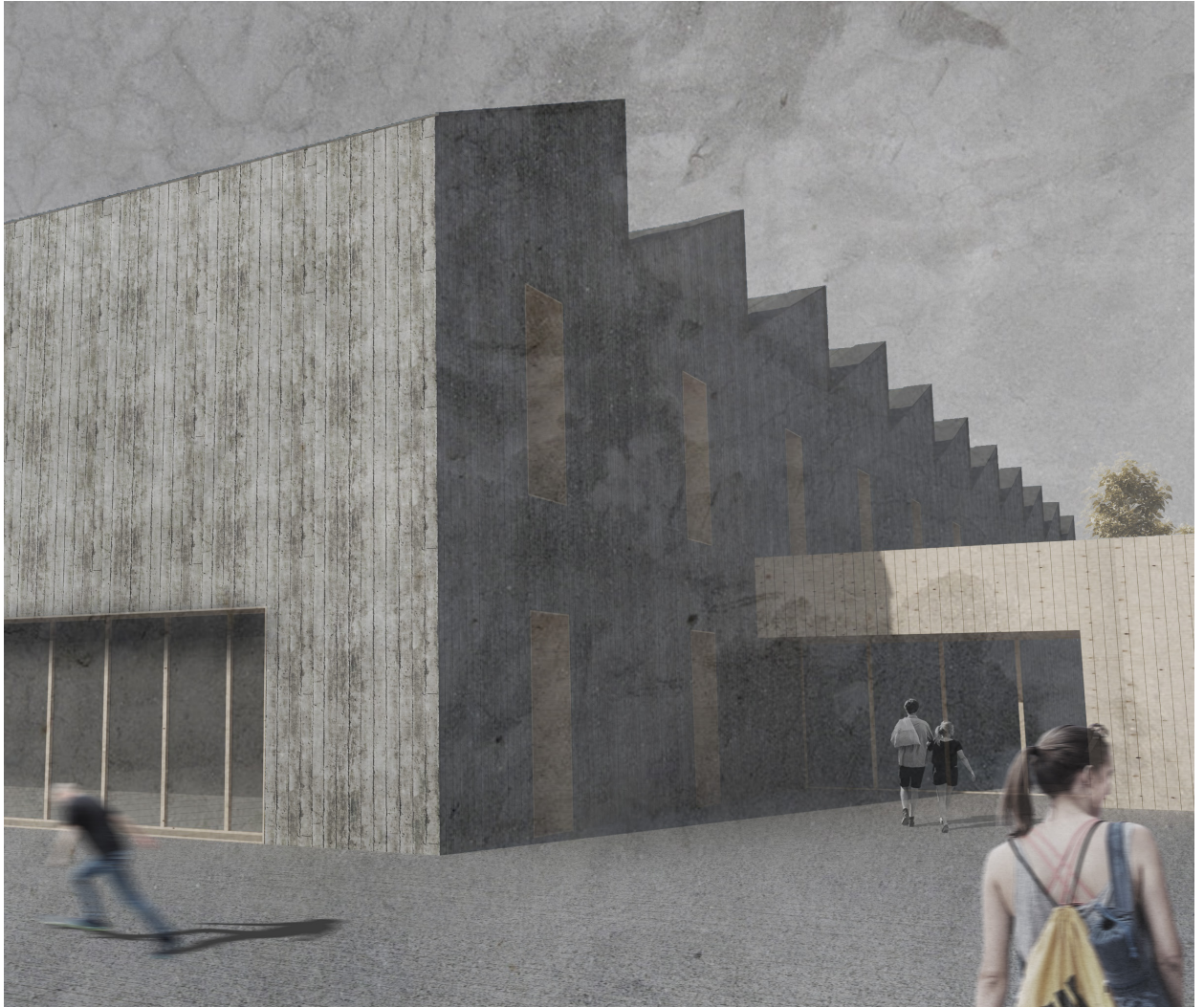
The project is located in the West side of Porto (Portugal), by the Duero riverside. It is an industrial district of Porto. This districts doesn't have its own identity as it used to be. It is a really fragmented zone, where lots of different uses meet (residential use, public facilities, industrial buildings, etc).

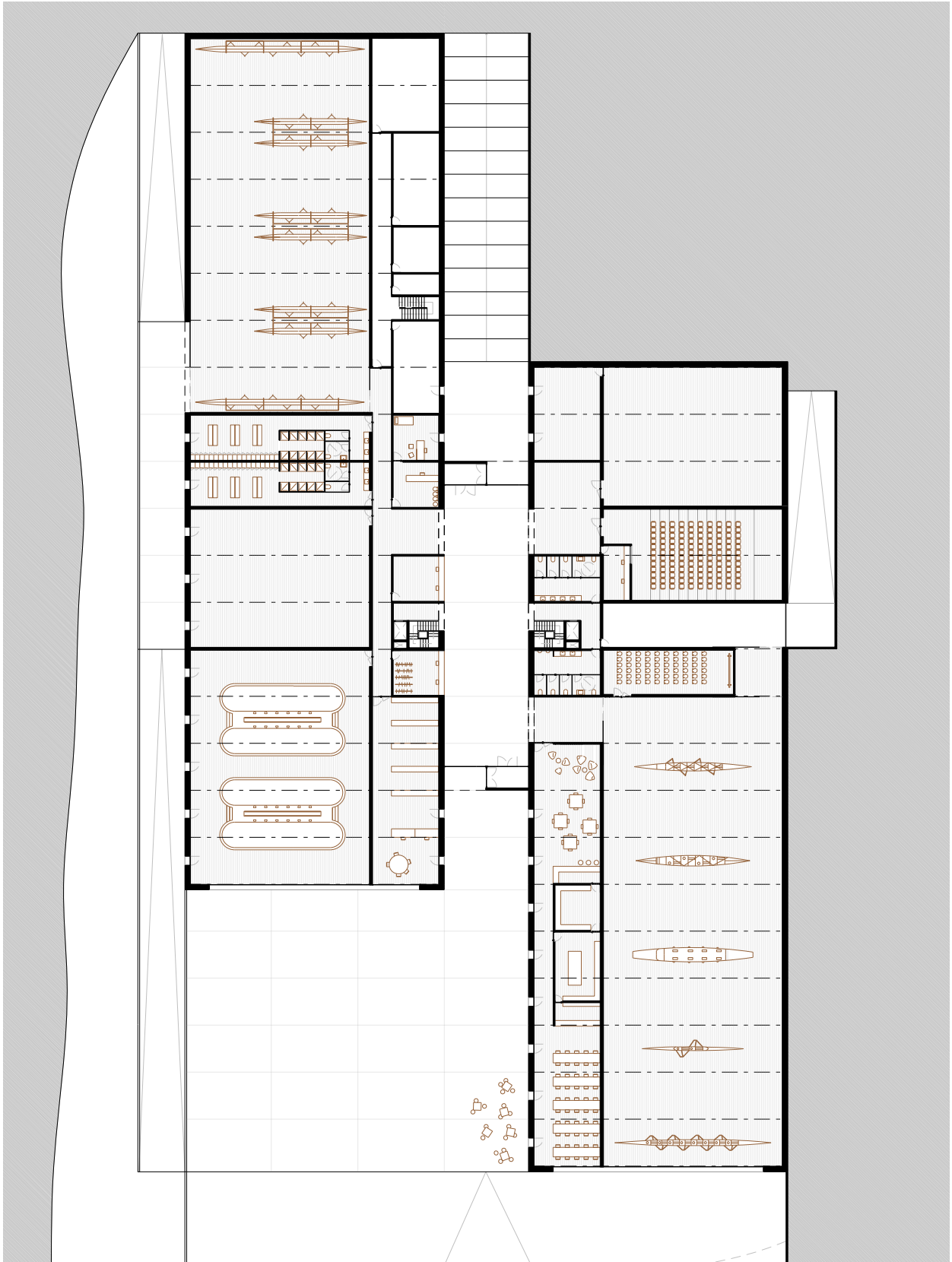
The building's volum gives response to the industrial buildings that are found throughout its surrounding. Doing so, it brings identity to the site, and the building can take advantage of space features that the industrial buildings had. Diaphanous spaces that could support different kind of activities, where the entrance of light came from skylights.

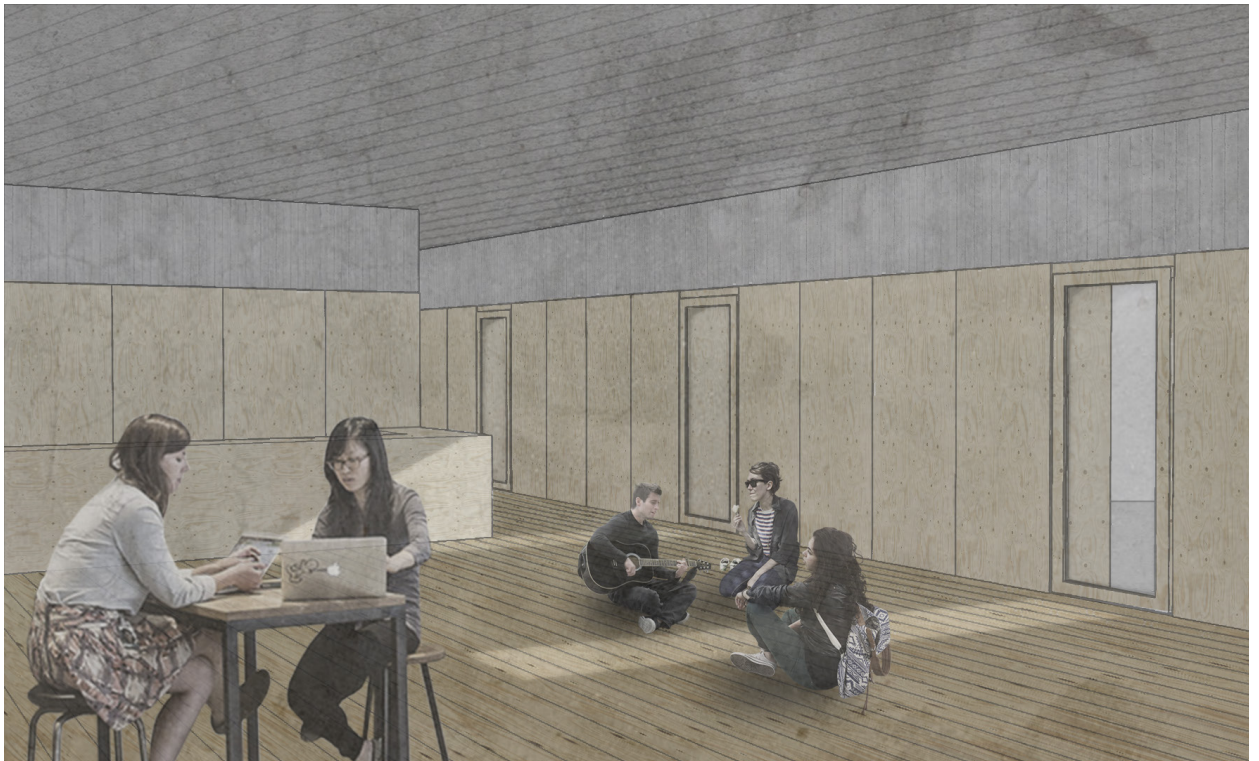
The building is organized in two volums. The first one is in contact with the river Tinto, and it contains the sports facilities such as gym and the boats storage room. The second volume, contains the social part of the complex such as the museum, auditorium, an all-purpose room, residential, etc.). The interior is organized in two bands. The bigger one contains the main rooms, being the ones that need more space. The other band holds the smaller rooms, stairs and installations. Both volumes are connected through another smaller volume which serves as the main entrance.

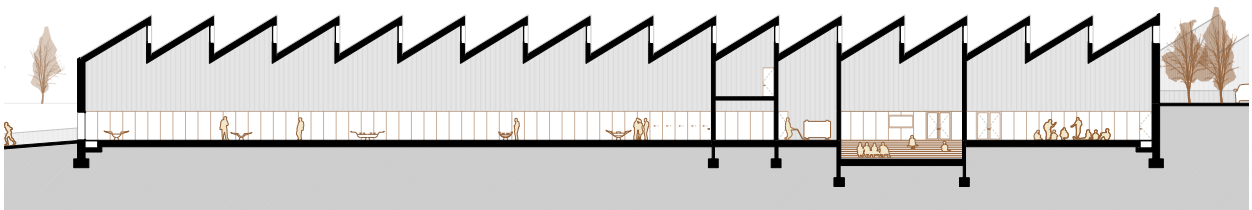
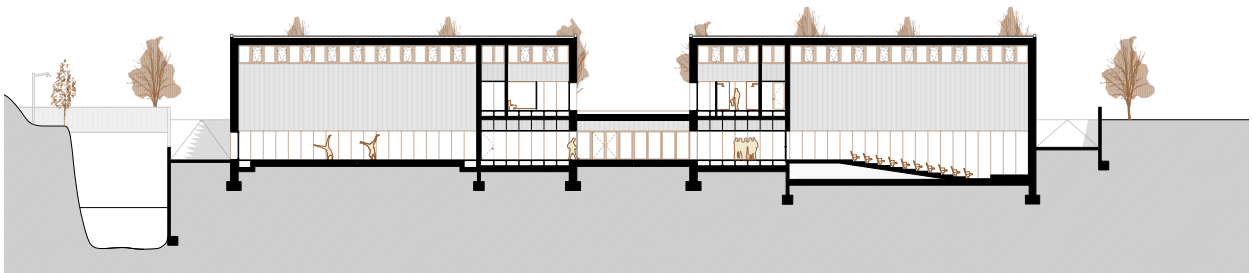
Due to its use as a nautic center, the relation with the riverside and the river itself is an issue to take into account. To get this contact, the public space, and the building itself look towards the water and have direct access to it.

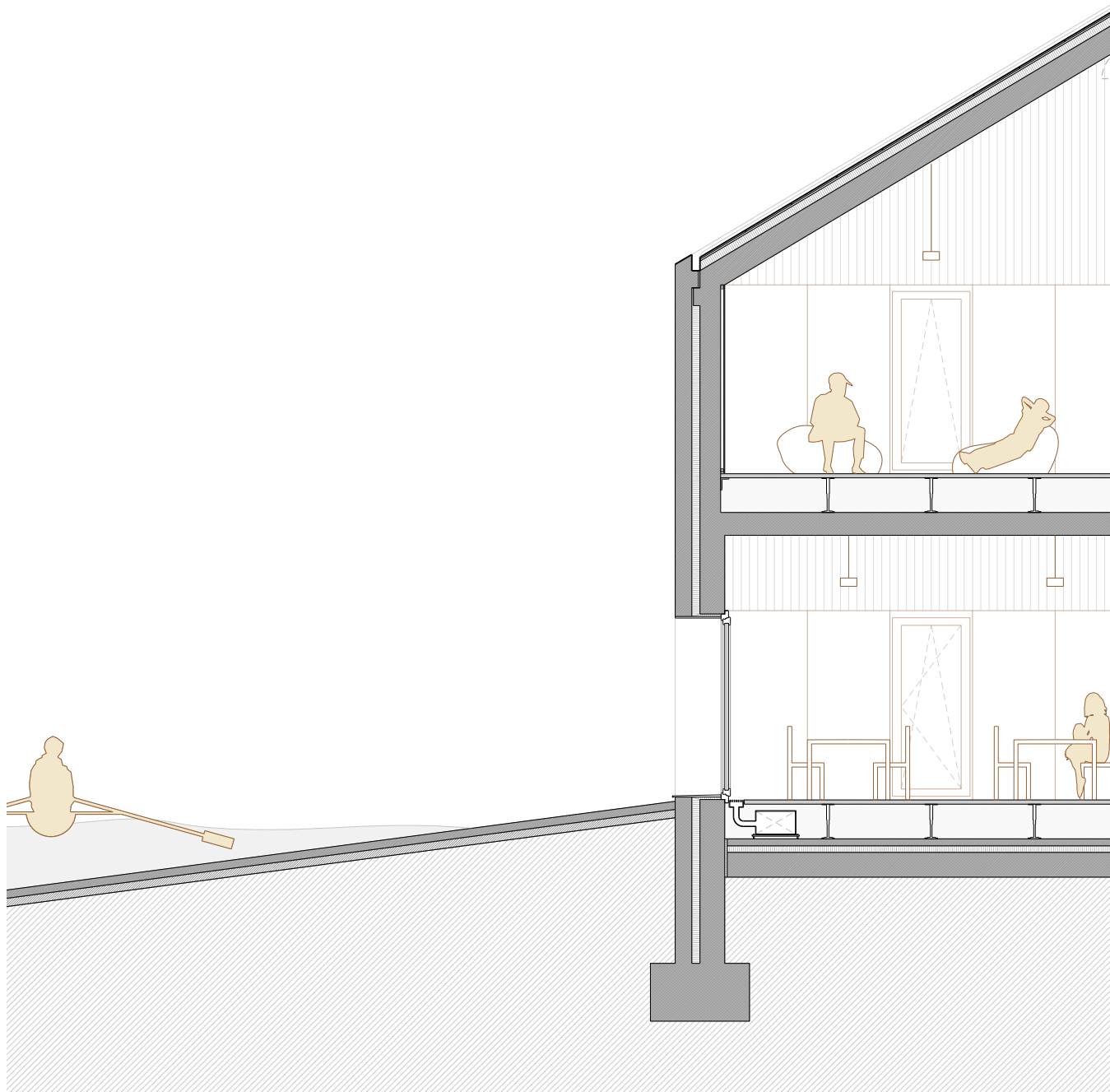


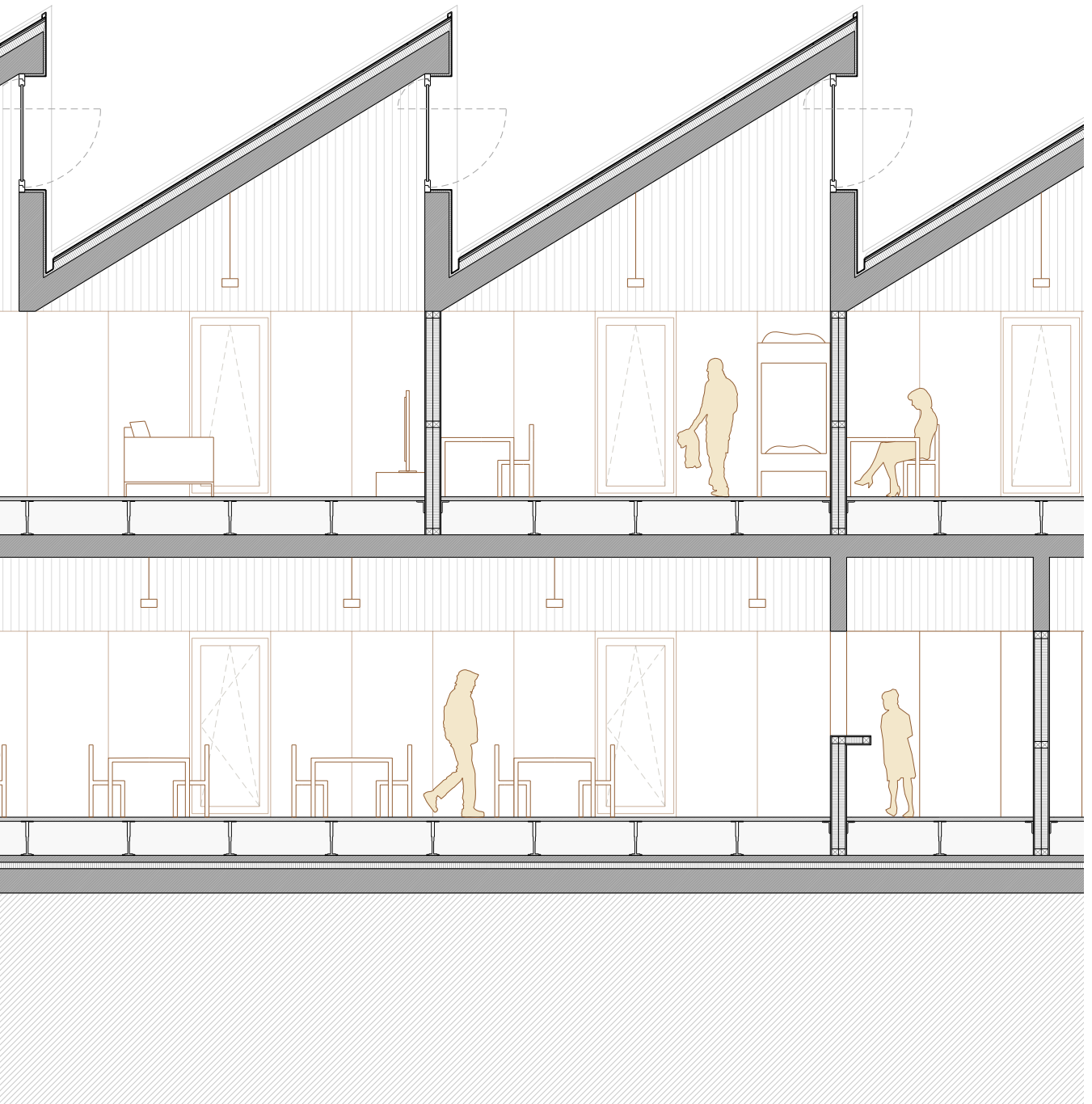












Roma Ager / Social Housing

Type: Academic - ETSAV / Polytechnic University of Catalonia

Date: June 2015

Team: Guillem Canudas & Marta Puigdomènech

This project is located near Rome, Italy in the Lazio region, in a city called Pomezia. The project attempts to relocate a gypsy camp where people are living in subhuman conditions, offering them a decent place to live.

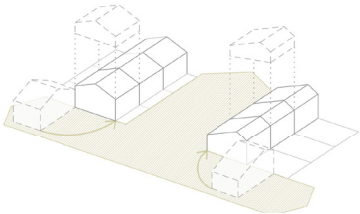
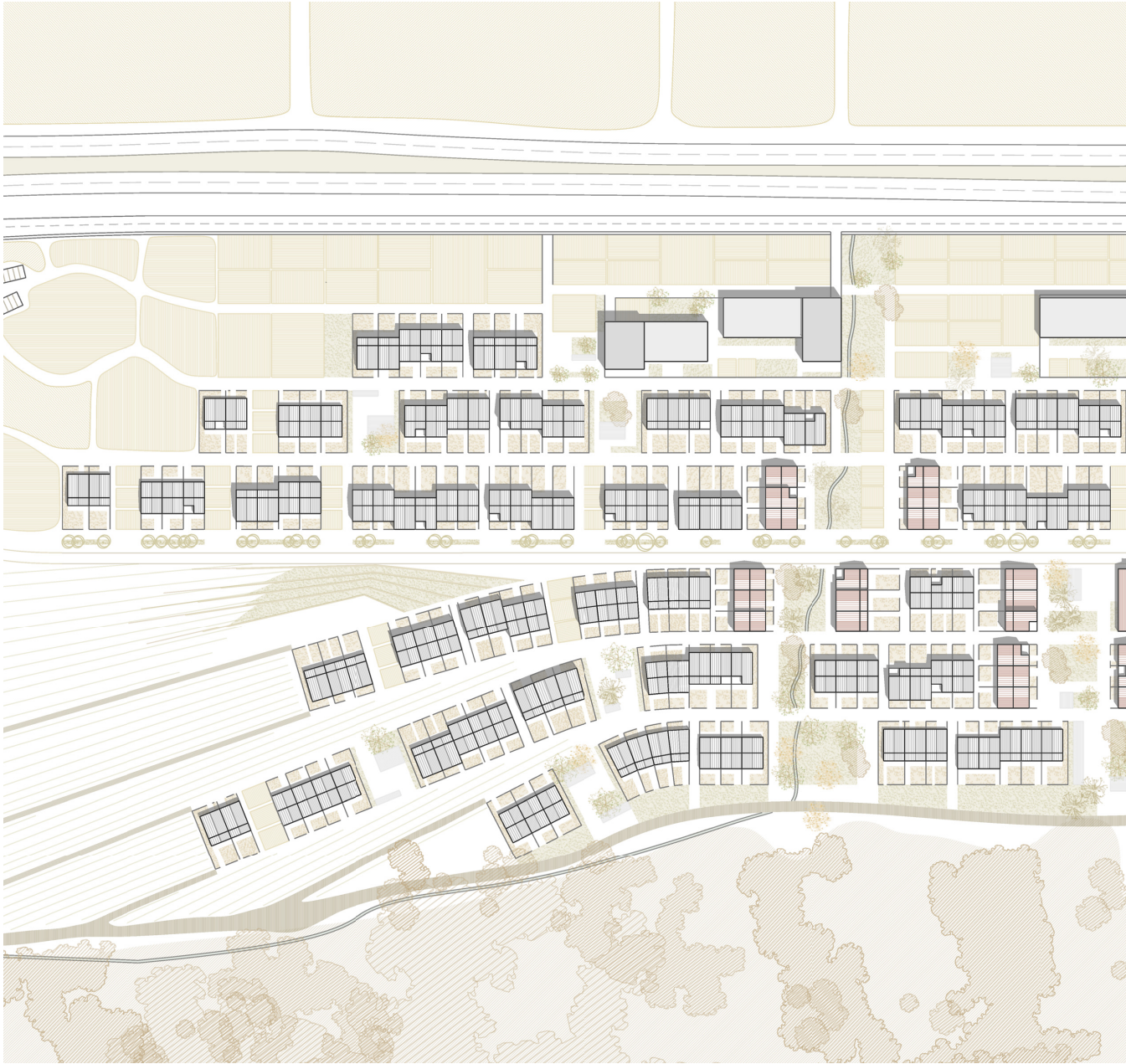
To do so, the community created not only gives a response to the social demands and lifestyles of its citizens, but also understands and integrates their cultural, economical and social context.

The key element blending and combining this community with the landscape and with the territory is, the use of the landscape itself. Lazio is surrounded by a great deal of vineyards, and agricultural plots; we take advantage of this fact to use it as an element creating community and encouraging social integration. Providing this productive land to the community can be seen as a response to underemployment, and as a way to give citizens the opportunity to work together, and a higher quality of life socially, economically and culturally.

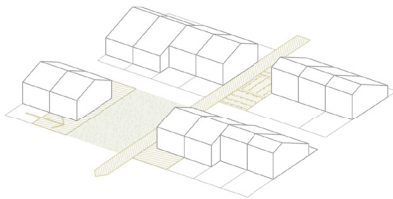
The dwellings proposed cover the basic needs for living, but each dwelling comes with a backyard, front yards, and a versatile "non-build" space, which can be used in many ways, depending on the dweller's need, for example to expand on the dwelling space if the user so desires. This strategy gives the whole community a great variety, and personality, that departs from monotony and generalization which is prevalent in many communities today.

This concept of community, integrated with its landscape and using it as a source of social cohesion and integration, can be exported to all places and communities that so often are in urgent need of quality of life improvements.

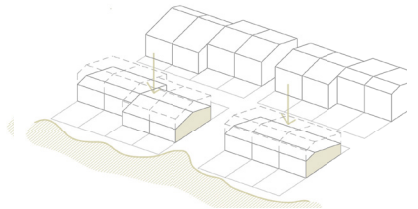




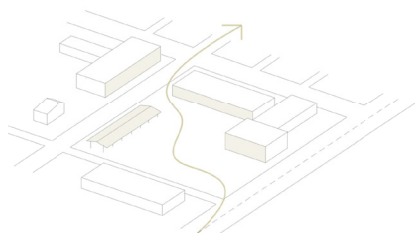
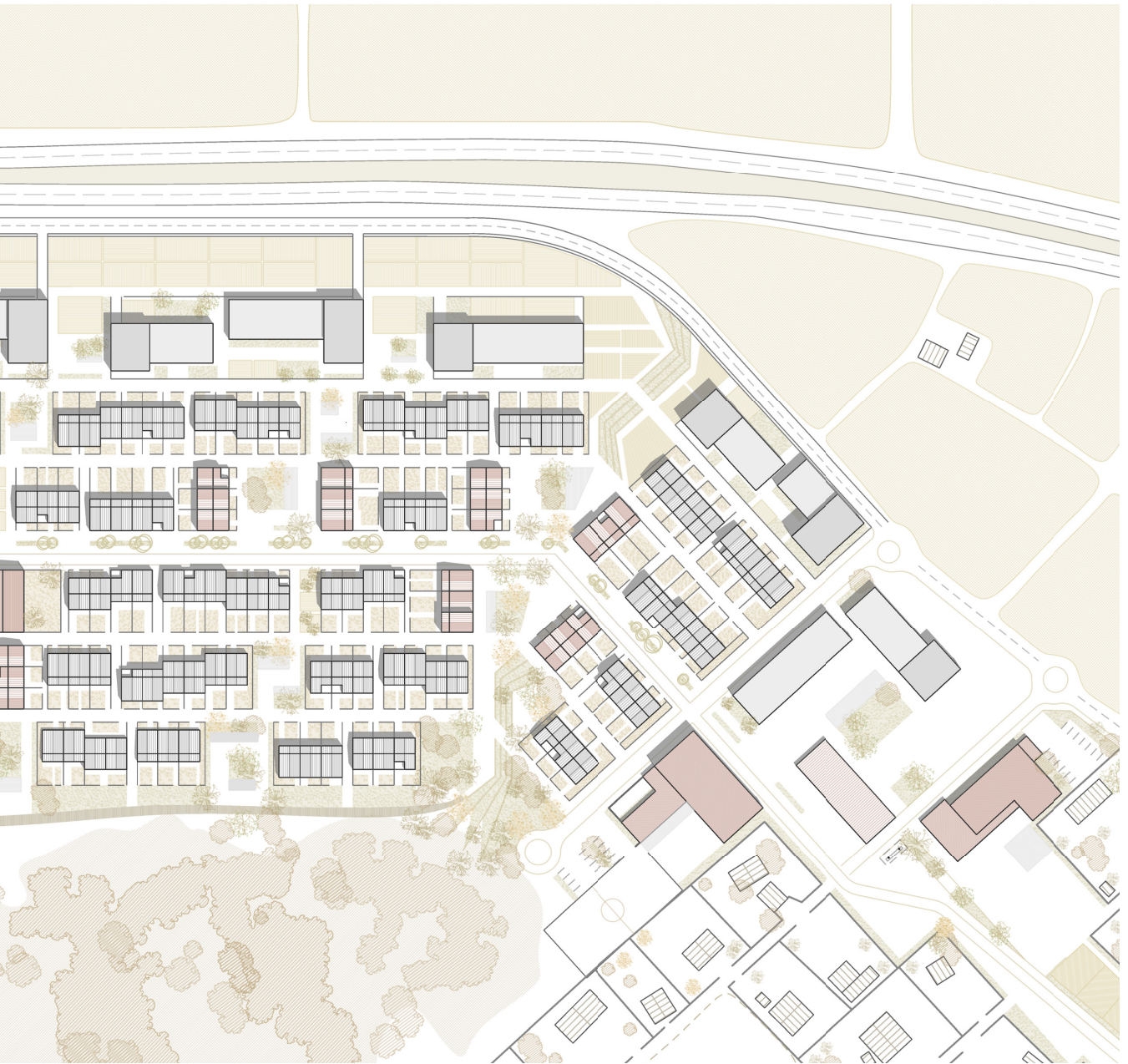
Squares and main street



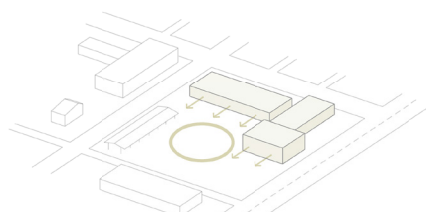
Decompression spaces



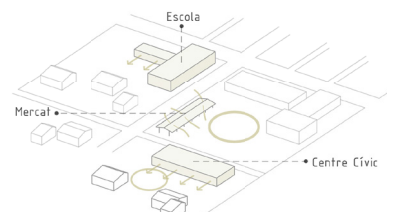
Relation with open spaces



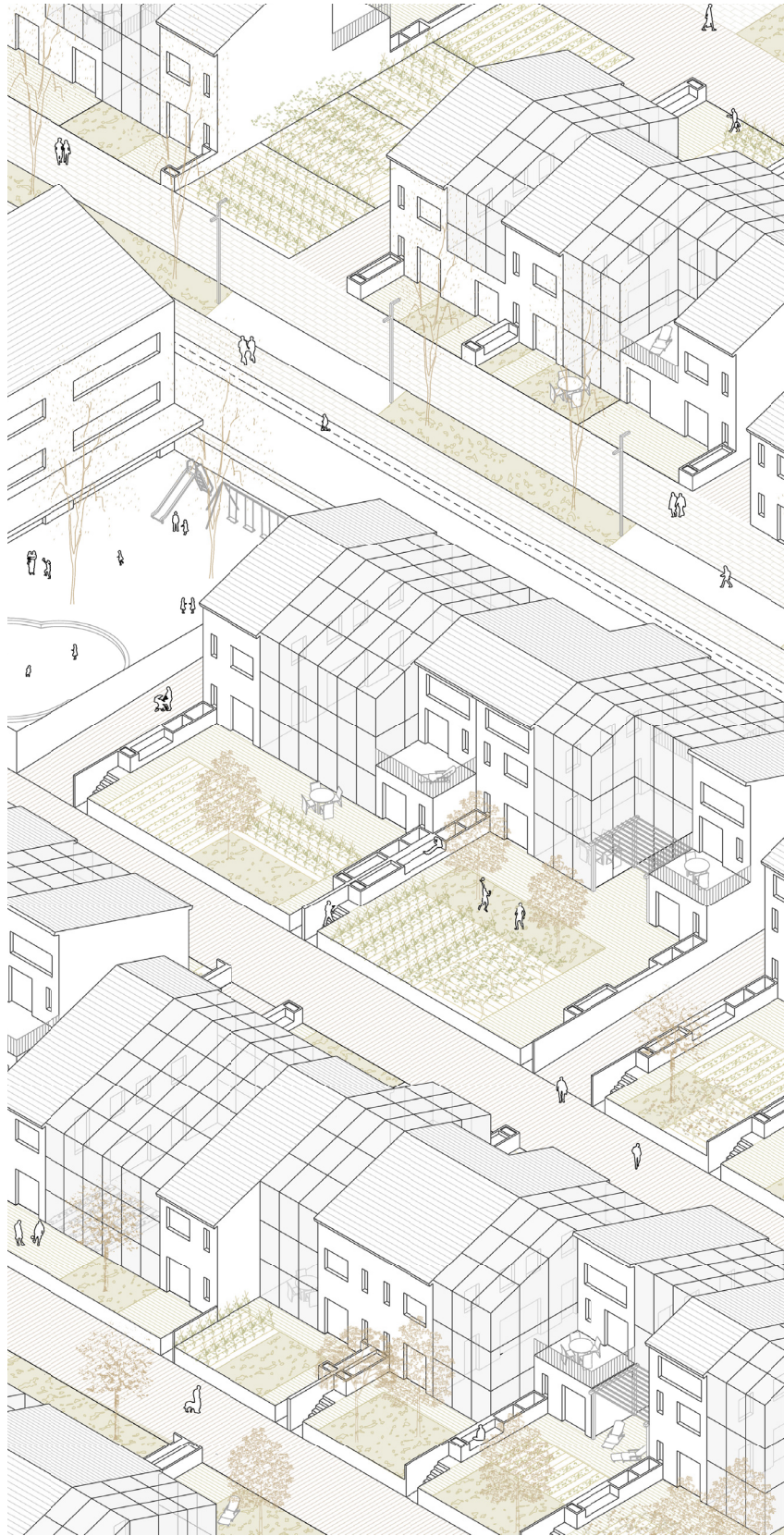
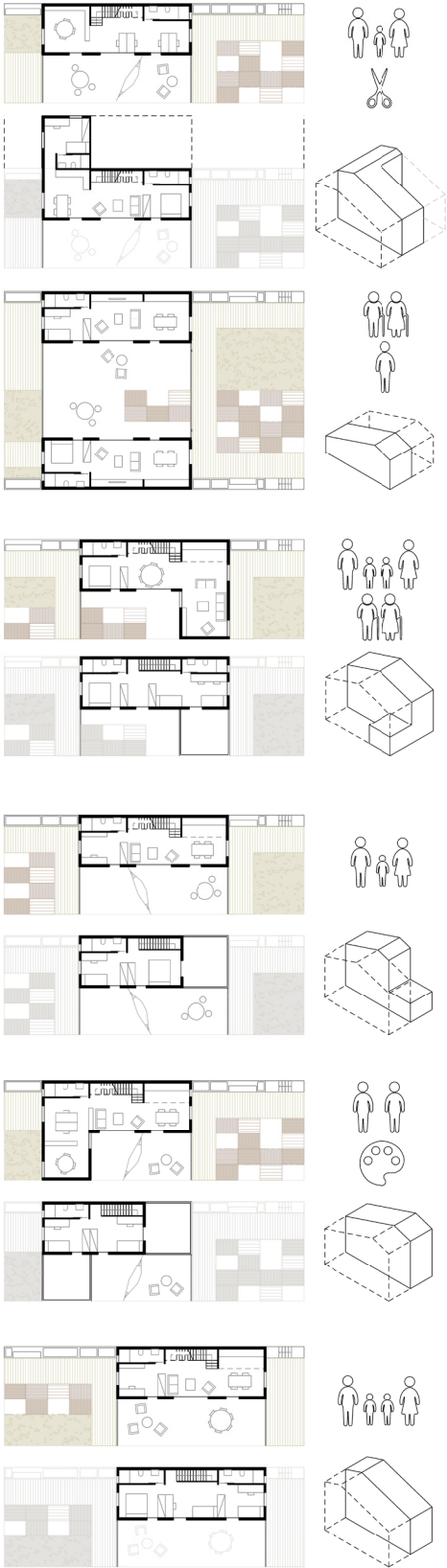
Connection



Tertiary services



The "Kneecap"









Student Housing 22@

Type: Academic - ETSAV / Polytechnic University of Catalonia

Date: January 2015

Team: Individual work

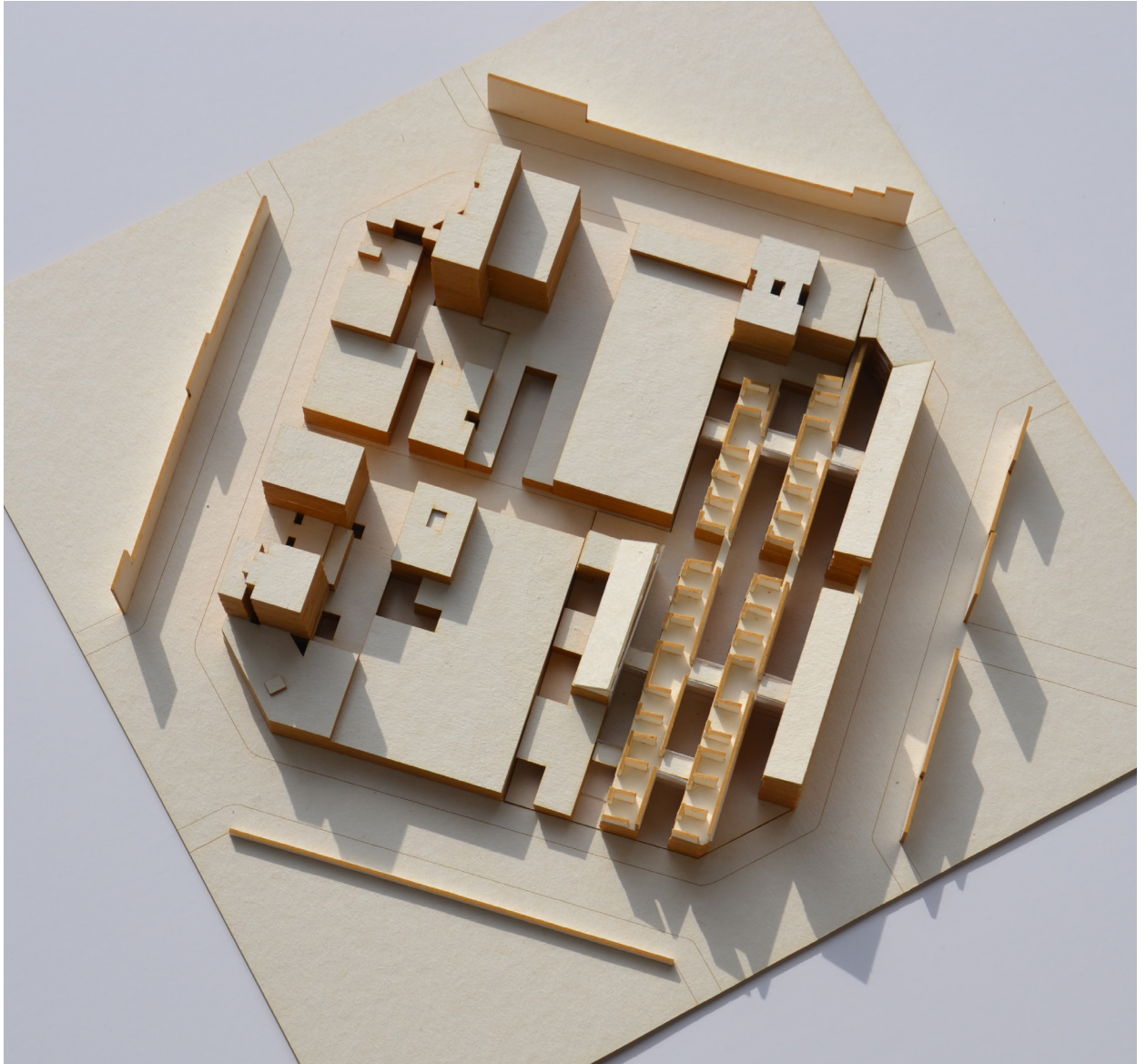
Within the site, there is an old factory and an old industrial façade which the city hall catalogued as a historical heritage. The project tries to give a response to both architectural elements. Some of the façade elements are kept and conserved in order to give privacy to the courtyards created between the different dwelling bars. In terms of the industrial factory, half of it will be preserved and will host the main entrance to the whole complex and the main common and administrative areas for the building.

The project itself is composed of a succession of dwelling bars, generating courtyards between them. Each of them has a small entrance lobby with a storage room and 7 apartments; 5 individual and 2 shared. There is also a common kitchen area and a reading-studying common room. This aggregation unit is adapted in relation with its position within the site and its boundaries.

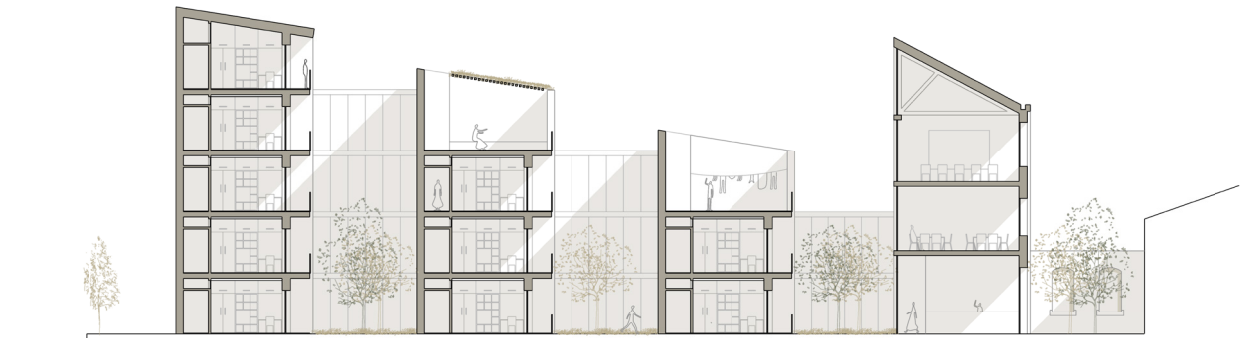
The structure is made out concrete shear walls, located in the perimeter, avoiding breaking the flexibility of the interior space, and thus guaranteeing that the building's distribution and function can be changed if needed.

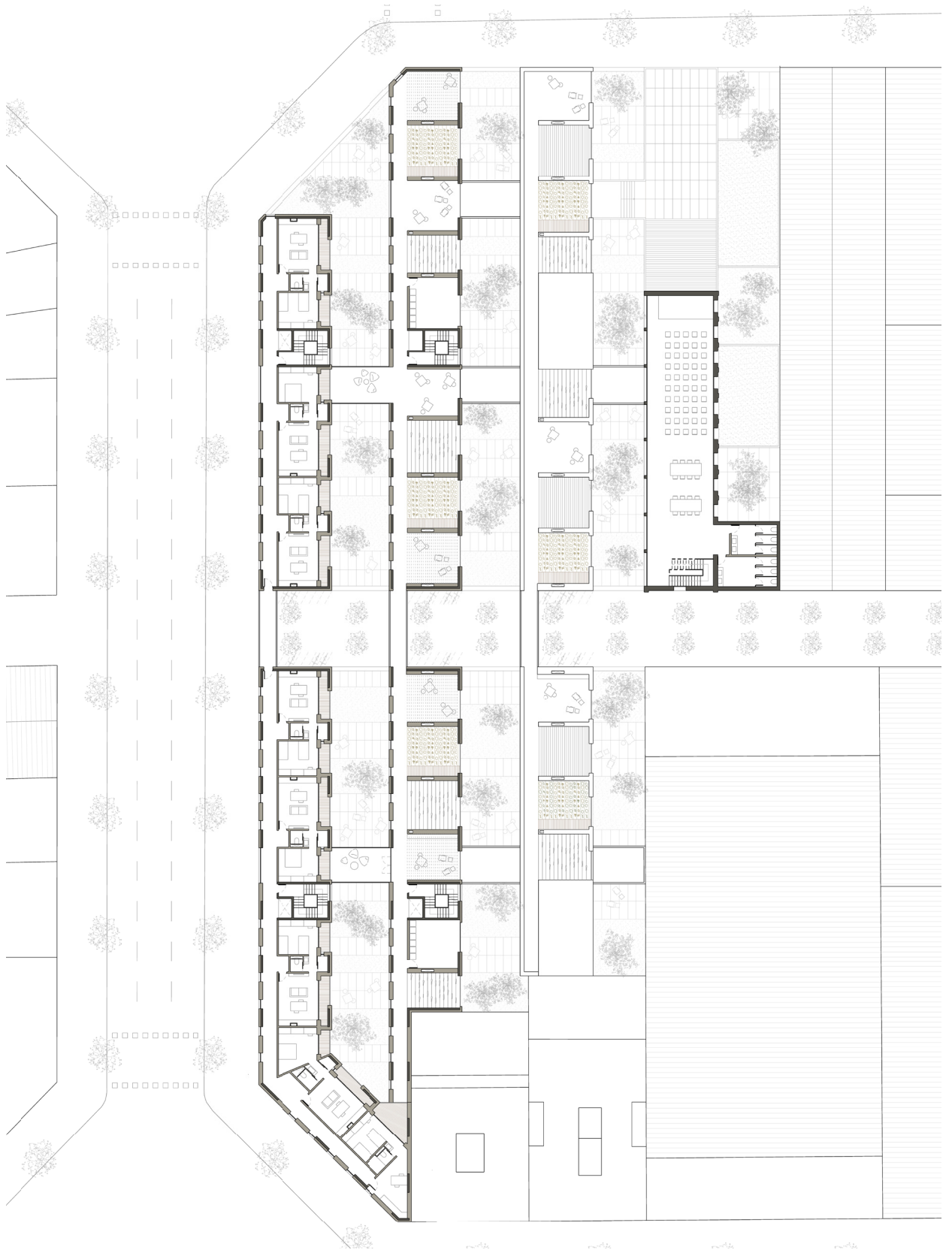
The different typologies of dwellings that the program requires (individual apartment, shared apartment and apartment plus kitchen space) are the result of a combination of 3 modules, all of them multiples of 1,8m, making easier its combination. The first module is the apartment access and the restroom, the second one is the bedroom itself, and the third one is a small kitchen and a living space. The concrete share wall is always situated with the first module.



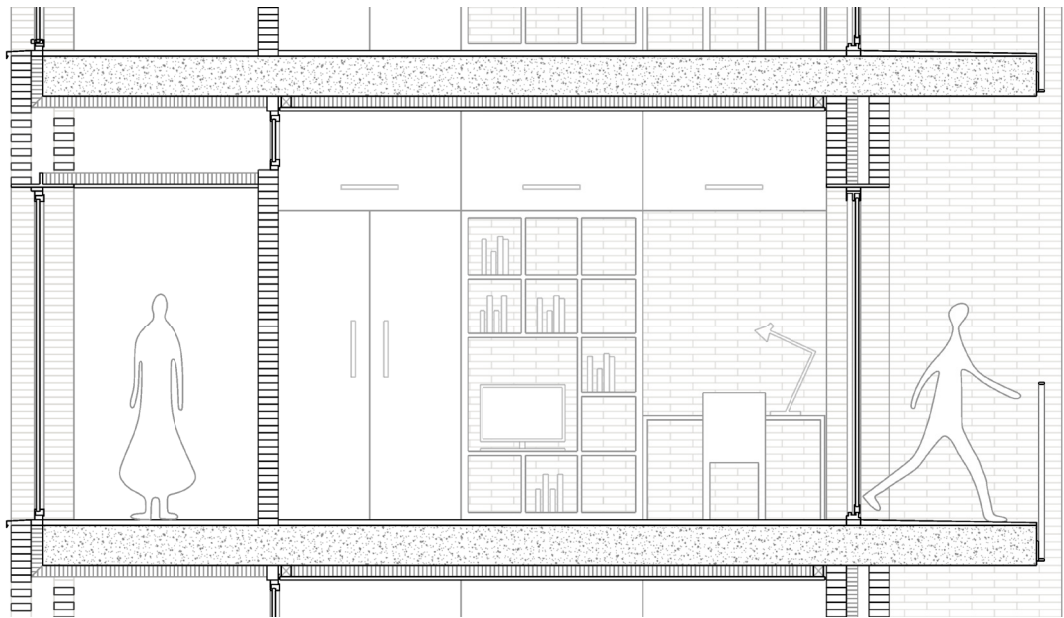
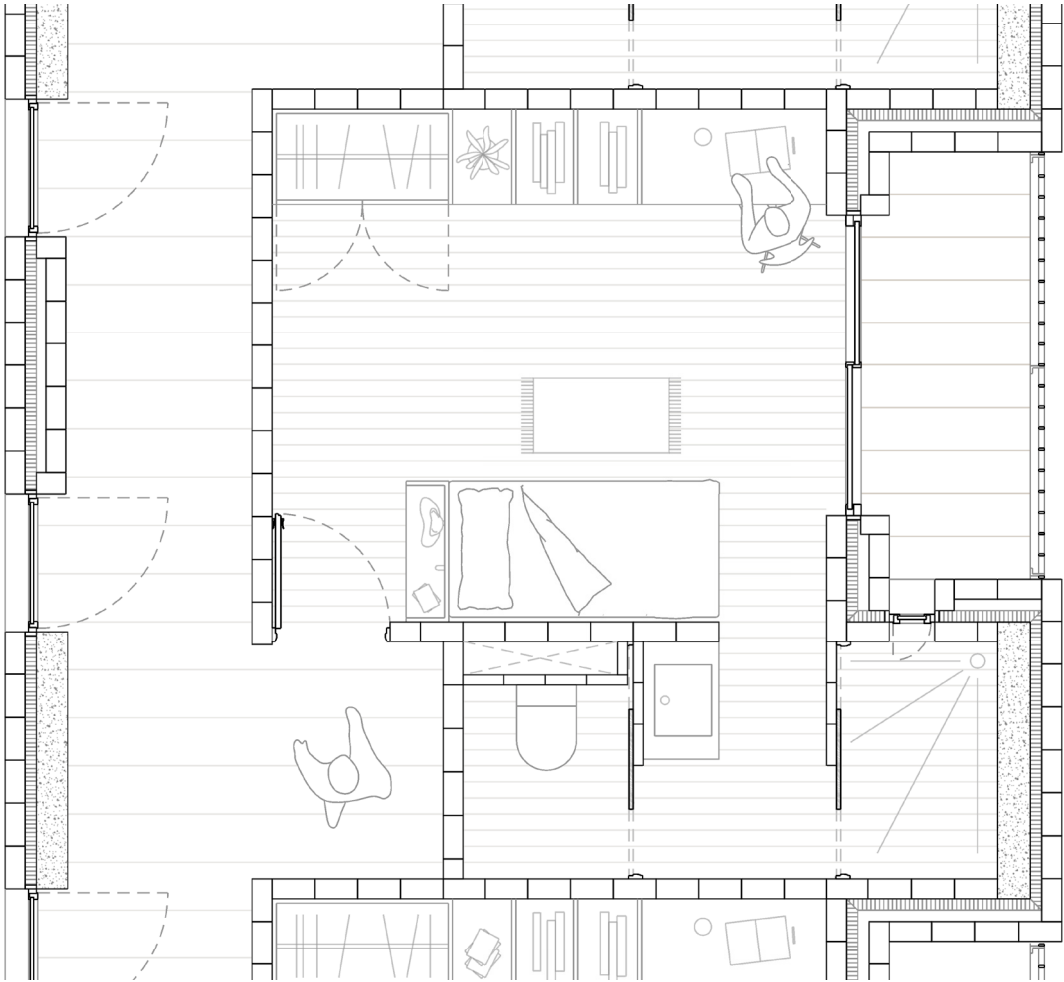












copyright © 2017
all rights reserved

miquelarias@gmail.com