

*This is the peer reviewed version of the following article: “**Moyano, C., Trigo, J.M., Llorca, J., Fornasier, S., Barucci, M., Rimola, A.** (2016). A plausible link between the asteroid 21 Lutetia and CH carbonaceous chondrites. *Meteoritic and planetary sciences*, (51), 10: 1795–1812.” which has been published in final form at [doi: 10.1111/maps.12703]. This article may be used for non-commercial purposes in accordance with [Wiley Terms and Conditions for Self-Archiving](#).”*

A plausible link between the asteroid 21 Lutetia and CH carbonaceous chondrites

Carles E. MOYANO-CAMBERO^{1*}, Josep M. TRIGO-RODRIGUEZ¹, Jordi LLORCA², Sonia FORNASIER³, Maria A. BARUCCI³ and Albert RIMOLA⁴

¹Institut de Ciències de l'Espai (CSIC-IEEC), Campus UAB, Carrer de Can Magrans, s/n, 08193 Cerdanyola del Vallès (Barcelona), Spain

²Institut de Tècniques Energètiques i Centre de Recerca en Nanoenginyeria, Universitat Politècnica de Catalunya, Diagonal 647, ETSEIB, 08028 Barcelona, Spain

³LESIA, Observatoire de Paris, PSL Research University, CNRS, Univ. Paris Diderot, Sorbonne Paris Cité, UPMC Univ. Paris 06, Sorbonne Universités, 5 Place J. Janssen, 92195 Meudon Principal Cedex, France

⁴Departament de Química, Universitat Autònoma de Barcelona, 08193 Bellaterra, Spain;

*Corresponding author. E-mail: moyano@ice.csic.es

(Received ...; revision accepted ...)

Abstract - A crucial topic in planetology research is establishing links between primitive meteorites and their parent asteroids. In this study we investigate the feasibility of a connection between asteroids similar to 21 Lutetia, fly-bied by the Rosetta mission in July 2010, and the CH3 carbonaceous chondrite Pecora Escarpment 91467 (PCA 91467). Several spectra of this meteorite were acquired in the ultraviolet to near-infrared (0.3 to 2.2 μm) and in the mid-infrared to thermal infrared (2.5 to 30.0 μm or 4000 to $\sim 333\text{ cm}^{-1}$), and they are compared here to spectra from the asteroid 21 Lutetia. There are several similitudes in absorption bands and overall spectral behavior between this CH3 meteorite and 21 Lutetia. Considering also that the bulk density of Lutetia is similar to that of CH chondrites, we suggest that this asteroid could be similar, or related to, the parent body of these meteorites, if not the parent body itself. However, the apparent surface diversity of Lutetia pointed out in previous studies indicates that it could simultaneously be related to other types of chondrites. Future discovery of additional unweathered CH chondrites could provide deeper insight in the possible connection between this family of metal-rich carbonaceous chondrites and 21 Lutetia or similar asteroids.

INTRODUCTION

Establishing relationships between meteorites and their possible parent asteroids has always been quite a tricky task, as there are many differences in the observing conditions, resolutions and methods used for the study of these primordial objects (see e.g. Clark et al. 2010, 2011). To complicate the overall puzzle it is obvious that the physical processes at work in each one of the parent bodies of meteorites have been remarkably different depending on their particular evolutionary stories (Binzel et al. 2010). In this paper we present evidence about the similitude, and even plausible connection, between the asteroid 21 Lutetia (or simply Lutetia) and one group of carbonaceous chondrites (hereafter CCs), characterized by a particularly high content in metal and a very low degree of alteration: the metal-rich CHs. We compare them on the basis of spectral similarities from the asteroid and one of these meteorites in the ultraviolet to thermal infrared (UV-IR) range.

Lutetia is a large main-belt asteroid. Some of its spectra are flat and almost featureless in the 0.15 to 2.5 μm range (Birlan et al. 2004; Coradini et al. 2011; Ockert-Bell et al. 2010; Sierks et al. 2011), but others can show faint signatures, depending mostly on the region sampled (Birlan et al. 2006; Weaver et al. 2010; Stern et al. 2011; Barucci et al. 2012), which makes the spectral type classification of this asteroid quite difficult. Tentatively, and due to its moderately-high albedo and presumably high metal content, it has been considered as an M taxonomic type asteroid into the X-group according to the Tholen classification (Barucci et al. 1987; Tholen 1989), and also as an uncommon Xk transition type asteroids into the X-group of the SMASS classification (Bus and Binzel 2002), or one of the very rare Xc transition type asteroids (Ockert-Bell et al. 2008; DeMeo et al. 2009).

Besides from spectral shape comparison, we analyze the similitudes of the CH group of CCs and Lutetia on the basis of the relatively high reflectance of these meteorites, compared to most CCs, which is probably associated with their high abundance of 10 to 200 μm metal grains (Campbell and Humayun, 2004; Trigo-Rodríguez et al. 2014). Indeed, the albedo of asteroid Lutetia is also higher than expected for the kind of dark asteroids commonly associated with CCs. Besides, the spectra obtained from several regions of this asteroid, which usually show few features, are consistent with the commonly flat spectra characteristic of most CCs, pointing towards a closer relation with these families of meteorites than with other types of chondrites. However, we take into account that some of the spectra associated to Lutetia show features consistent with other types of meteorites, which could imply that, even if CH meteorites are indeed connected to asteroids similar to Lutetia, they could not be representative of the entire surface of their parent body.

ANALYTICAL PROCEDURE

Rationale for sample selection

Several attempts to establish Lutetia as the parent body of different meteorites groups have been done before. Primitive meteorites (of petrologic type 3 or close) have been related to this body due to observations in the UV-NIR range (e.g. Nedelcu et al. 2007, where meteorite and asteroid spectra are compared using a χ^2 fitting test). Carbonaceous bodies also seem to match some of the spectral properties of Lutetia, and indeed, it has been related to COs and CVs due to its mid-infrared features and polarimetry data (Lazzarin et al. 2004, 2009; Barucci et al. 2008, 2012; Belskaya et al. 2010). However, most spectra of Lutetia do not show the lack of the drop-off below 0.55 μm which is common in CVs, and its albedo is higher (Gaffey 1976). In the case of COs, they have an olivine band at 1 μm which cannot be seen in all the asteroid spectra (Barucci et al. 2005). Also, both groups of CCs show deeper 1 μm bands and darker spectra, once normalized (Drummond et al. 2010). Lutetia has also been compared with meteorites with a very high content in metal, due to its moderately high albedo around 0.2 (see e.g. Mueller et al., 2006, for a summary of albedo determinations for Lutetia in table 5, and Sierks et al. 2011, for more recent result obtained with the cameras onboard Rosetta), but the inferred density of this asteroid, $\sim 3400 \text{ kg/m}^3$ (Weiss et al. 2010), is too small for an object dominated by metallic components, even assuming a typical porosity of 10-15% (Weaver et al. 2010; Pätzold et al. 2011). It has been suggested, with pretty strong arguments, that enstatite chondrites (ECs) match the spectra of 21 Lutetia better than most CCs (see, e.g., Ockert-Bell et al. 2010; Vernazza et al. 2011). However, these

chondrites do not show in the mid-infrared spectra the Christiansen peak around $9.3 \mu\text{m}$ ($\sim 1075 \text{ cm}^{-1}$), reported in a spectrum of 21 Lutetia and common in CCs (Izawa et al. 2010; Barucci et al. 2012). Neither they show the features in the visible related to aqueous alteration and hydrated minerals that have been found in some Lutetia spectra (Lazzarin et al. 2009; Rivkin et al., 2011).

Some authors (e.g. Lazzarin et al., 2009; Coradini et al.; 2011) took into account the metal-rich groups of CCs (CRs, CHs and CBs) in the analysis of Lutetia spectra, suggesting the relation between this asteroid and the metal-rich carbonaceous chondrites. It has been shown that the densities of these meteorites are consistent with that of the 21 Lutetia asteroid (Coradini et al. 2011), specifically in the case of CHs, with a bulk density of $\sim 3650 \text{ kg/m}^3$ (Macke et al. 2010). The geometric albedo of this asteroid, determined precisely in situ by the Optical, Spectroscopic, and Infrared Remote Imaging System (OSIRIS) instrument onboard Rosetta, has a value of 0.19 ± 0.01 (Sierks et al., 2011). This value corresponds to zero phase angle, and therefore in previous studies it has been corrected using Lutetia phase function, in order to be compared to albedos of meteorites (usually measured at angles of ~ 7 to 10 degrees), obtaining a value in the range of 0.13 - 0.16 (Belskaya et al., 2010). It is larger than the usual values for other primitive bodies and most CCs, and lower than the ones from metal meteorites (Gaffey, 1976) but in agreement with metal-rich CCs (Weiss et al. 2012, Trigo-Rodríguez et al. 2014). However, the particle size can have a strong effect on albedo, so the fact that Lutetia is probably covered in fine-grained regolith has to be taken into account to do a proper comparison with the spectral properties of meteorites (Belskaya et al., 2010). Moreover, Lutetia shows surface heterogeneities (see Barucci et al., 2012, and references therein), indicating the presence of different lithologies and therefore the possibility that more than one type of meteorites could have their origin in such a parent body (Nedelcu et al. 2007). We propose, therefore, that these metal-rich CCs should be considered as possible analogues of certain regions of this asteroid, which does not mean that the whole body shows this kind of metal-rich carbonaceous composition.

It is important to note that the CR, CH, and CB chondrites are considered a clan, due to mineralogical and chemical properties that strongly relate them (Weisberg et al. 1995). Their constituent materials could come from the same solar system reservoir, as pointed out by their similar oxygen isotope ratios (although they could also have formed in different reservoirs with similar O-isotope ratios), but probably having experienced different collisional processing (Weisberg et al. 2006). In fact their bulk composition is generally chondritic, but siderophile abundances are tens of per cent higher, and abundances of moderately volatile elements factors several times lower, than in other carbonaceous chondrites (Wasson and Kallemeyn 1990). This scenario might be consistent with the fact that these groups are still primitive, but were probably affected up to different degrees by melting, vaporization, outgassing, condensation and size-sorting in a cloud of impact ejecta (Wasson and Kallemeyn 1990). Consequently, our envisioned link between Lutetia, or a similar body, and the metal-rich CCs could be a scenario consistent with a proposed impact stripping evolutionary model for this asteroid (Weiss et al. 2012).

We know from several previous studies that each chondrite group shows distinctive reflection spectra (see e.g., Cloutis et al. 2012a; 2012b, where they use spectra from powders of different sizes, and Trigo-Rodríguez et al. 2014, where we mostly obtained

spectra from meteorite thin or thick sections). CCs belonging to the CR, CH and CB groups show rather high reflection degrees, increasing from CRs to CBs. This is probably due, at least partially, to their high content in metal grains. However this relationship is not linear as the distribution of metal in these three groups is heterogeneous: while CH chondrites have most of their metal in the matrix, CRs show metal inclusions mostly inside the chondrules, which would not necessarily imply a high increase of the albedo of their parent body (Krot et al. 2002; Trigo-Rodríguez et al. 2014). On the other hand, CBs have very high metal abundances mostly out of the chondrules, so their parent body should show a particularly high albedo in the same way that the meteorite samples show a very high reflectance spectrum (Trigo-Rodríguez et al. 2014). The 0.13-0.16 reflectance of Lutetia at phase angles between 7 and 10 degrees is low compared to iron meteorites and CBs, and high compared to other CCs, including CRs, but it is comparable to the absolute reflectance obtained for a CH chondrite in a previous study, between 0.10 and 0.20 in the 0.2 to 2.0 μm range. (see e.g. Fig. 1d of our Trigo-Rodríguez et al. 2014, paper). This is why we consider that among metal rich CCs, CH chondrites are the more plausible candidates to be related to Lutetia or similar asteroids.

For this study we obtained some samples from the high-metal carbonaceous chondrite of petrologic type 3 (CH3) Pecora Escarpment (PCA) 91467, recovered by the Antarctic Search for Meteorites (ANSMET) program in 1991, and nowadays belonging to the NASA Antarctic collection. These samples consist on a small chip, the thin section PCA 91467,25 (Fig. 1), and the thicker section PCA 91467,16, from which a second thin section was obtained. They show a remarkably pristine interior that can be representative of the forming materials of its progenitor asteroid, if we deal appropriately with the differences in scale and other factors.

Spectroscopy in the 0.3 to 2.2 μm range

We used the two thin sections and the thick section to obtain reflectance spectra in the UV-NIR range (from 0.3 to 2.2 μm). The spectrometer was a Shimadzu UV3600, the same we used in previous studies, where the procedure to use this technique has already been explained into detail (Trigo-Rodríguez et al. 2011, 2014; Moyano-Camero et al. 2013). It allows us to obtain the absolute reflectance of a meteorite section, which can be compared to the remote spectra of asteroids (Trigo-Rodríguez et al. 2014). This spectrometer uses an Integrating Sphere (ISR) and a BaSO_4 substrate to create a standard baseline for calibration, which provides close to a 100% reflectance signal better than 1 σ in the 0.3 to 2.2 μm range.

The spectra obtained with this specific spectrometer always show baseline noise between ~ 0.8 and $0.9 \mu\text{m}$, two instrumental peaks (one from 1.4 to $1.6 \mu\text{m}$ and the other from 1.9 to $2.2 \mu\text{m}$), and become too noisy to be reliable after around $2.1 \mu\text{m}$, due to humidity, carbon dioxide and system hardware. Therefore, we had to apply some corrections to avoid showing unreliable data (Fig. 2, A). As can be seen, the region between 0.8 and $0.9 \mu\text{m}$ does not include usable data, and therefore was deleted. The peaks at the regions from 1.4 to $1.6 \mu\text{m}$ and from 1.9 to 2.2 correspond to an unsuccessful instrumental correction applied by the software to remove the presence of the BaSO_4 substrate from the final spectra. We applied a new correction to the spectra in order to get rid of those peaks, but the final result in those regions became slightly noisy, which could hide some faint feature of interest. The scanned slot corresponds to a

2x6 mm² area, which is below the size of the sample and therefore avoids any contribution from the epoxy or the glass in which the section is mounted. Also, comparing the spectra of both a thick and a thin version of the same sample we saw that the contribution of the glass is very small, if any at all (Fig. 2, B).

We noticed that there are obvious differences between our PCA 91467 spectra in this range and the spectrum shown at Cloutis et al. (2012b) (Fig. 3), which nowadays is the only CH3 spectrum in the RELAB (Reflectance Experiment Laboratory) catalogue. It was acquired from a <75 µm grain size powder at the NASA RELAB facility, in bidirectional reflectance mode with a source and phase angle of 30°, and a 5 nm resolution. Both the 0.9 and the 1.9 µm bands in the RELAB spectrum are hidden in our spectra by the baseline noise between 0.8 and 0.9, and by the noise produced after correcting the instrumental peak from 1.9 to 2.2, respectively. However, those bands are actually quite weak, if we take into account that in the RELAB spectrum they are deepened as a result of terrestrial weathering, according to Cloutis et al. (2012b).

The most notable difference between our spectra and the RELAB spectrum is the absence of the deep steep below 0.6 µm in our spectra. The presence of this strong ultraviolet absorption can be produced as a result of terrestrial weathering (Cloutis et al., 2012b). Although we obtained our spectra from regions where the terrestrial alteration is not significant (Trigo-Rodríguez et al., 2014), some minor terrestrial weathering in the selected area is plausible. A strong heating can make this feature disappear (Hiroi et al., 1993), but this is not consistent with a mostly unaltered CH3 chondrite (Bischoff et al., 1994). Hendrix and Vilas (2006) provided an explanation for the disappearance of this band, showing that space weathering (represented by addition of nanophase iron), resulted on a decrease of slope in this spectral region, but again this is hardly the case as the effects of space weathering are rarely seen on meteorites. However, those authors also explained how minerals with high iron content produce a similar effect (Hendrix and Vilas, 2006). As we work with cut sections, the metal grains in our samples are polished, and therefore their Fe content becomes more 'visible' from an spectroscopic point of view than in the powder used in RELAB. As a consequence, the deep steep below 0.6 µm in our samples becomes way weaker, in a very similar way as what happens in space weathered asteroids (Hendrix and Vilas, 2006), which makes from our samples good candidates for meteorite-asteroid comparison. Other differences between the spectra obtained from thin sections and powders also could be considered here, but that would imply a much more extended study far away from the purpose of this paper. However, the strongest variations due to grain size are on overall slope (mostly after ~0.6 µm), and reflectance (Johnson and Fanale, 1973), and we see that those particular features are very similar between our spectra and the RELAB spectrum. Therefore, we can consider our spectra roughly equivalent to the spectra obtained from a <75 µm powder of the same meteorite (Cloutis et al., 2012b).

Spectroscopy in the 2.5 to 30.0 µm (4000 to 333 cm⁻¹) range

With an agate mortar we ground into powder the chip from PCA 91467, and studied it with a Fourier Transform Infrared (FT-IR) spectrometer. This kind of device is mainly used to analyze molecular structures, which allows determining the presence of organic molecules and hydrous components. It is also useful to detect silicate minerals, reasons why is widely used in mineralogy and geology. In our specific case it is equipped with a Smart Orbit Attenuated Total Reflectance (ATR) accessory, equipment that provides an

internal reflectance high resolution spectrum whose peaks have the same positions but different relative intensities than an equivalent absorption IR spectrum (Chemtob and Glotch, 2007). It uses a diamond-based detector, which has a wide spectral range plus a good depth of penetration, and is inert, particularly interesting feature when working with meteorites. It has a spectral resolution of $\sim 1 \text{ cm}^{-1}$ and the data sampling is every $\sim 0.5 \text{ cm}^{-1}$. Its spectral window goes from 2.5 to 45.5 μm (4000 to 200 cm^{-1} , approximately), but we discard the data above 30 μm ($\sim 333 \text{ cm}^{-1}$), which are much noisier or scattered (Trigo-Rodríguez et al. 2012). For a more detailed explanation of the procedure see previous studies (Trigo-Rodríguez et al. 2014).

Comparison with data from 21 Lutetia

To directly compare the spectra obtained of meteorite PCA 91467 with information from the asteroid 21 Lutetia in the 0.3 to 2.2 μm range, we used a Lutetia spectrum taken from the Visible and InfraRed Thermal Imaging Spectrometer (VIRTIS) onboard Rosetta in the near-infrared (0.5 to 5 μm) range (Belskaya et al. 2010; Coradini et al. 2011; Sierks et al. 2011). It has to be taken into account that this spectrum includes some undesired instrumental features mostly in the visible (~ 0.4 to 0.7 μm) region (Coradini et al. 2011). This is why we also used a Lutetia spectrum from groundbased observations (visible range) obtained with the DOLORES (Device Optimized for the LOw RESolution) instrument in the Telescopio Nazionale Galileo (TNG, more details about this spectrum and the instrument in Belskaya et al. 2010), which was also used by Sierks et al. (2011) (Fig. S6 online material) to compare the OSIRIS Narrow Angle Camera (NAC) and Wide Angle Camera (WAC) spectrophotometry taken in flight during the Lutetia fly-by. In Fig. 4 we compare our PCA 91467 spectra with the mentioned spectra from VIRTIS and DOLORES. To properly compare their shape and features, we normalized them to 1 at 0.55 μm . Band center positions were mostly decided using visual criteria, as only an approximate determination is required for our purposes.

For the comparison in the 2.5 to 25.0 μm (4000 to 400 cm^{-1}) range, we used the VIRTIS spectrum between 2.5 and 4 μm (4000 to 2500 cm^{-1}), plus information obtained from Lutetia with the Infrared Spectrograph (IRS) of the Spitzer Space Telescope (SST), which covers the wavelength range from 5.2 to 38.0 μm (1923 to 263 cm^{-1} , approximately). With the IRS the whole rotational period of the asteroid was covered, with a total of 14 full wavelength spectra, which were averaged to obtain the mean emissivity (or emittance) spectrum we used here (see Barucci et al. 2008 and Lamy et al. 2010 for more details). An emissivity spectrum depends in the radiant flux emitted, and its intensity pattern differs from what can be seen in an ATR spectrum as the one we obtained for this study. The position of the peaks is apparently consistent between these two types of IR spectroscopy, according to previous studies, to the point of direct comparison (see, e.g., Morlok et al. 2014). However, we prefer to be conservative and consider that there are too many differences between these techniques to directly compare their shape, so we use these spectra separately. In the first place, we analyzed some of the features present in the ATR spectrum (Fig. 5). Separately we studied, in Figure 6, some features present in the VIRTIS spectrum, comparing them with information obtained about metal-rich carbonaceous chondrites in previous studies (Osawa et al. 2005). To complement that information, we compared the IRS spectrum with spectra of several meteorites from the ASTER (Advanced Spaceborn Thermal Emission and Reflection Radiometer) (Baldrige et al. 2009) and RELAB spectral

catalogues, in a similar way as did before by other authors (Nedelcu et al., 2007; Barucci et al., 2008; Lazzarin et al., 2009). The goal was to see the overall resemblances and differences between them (Fig. 7). There is only one PCA 91467 spectrum in the RELAB catalogue, and none in ASTER, so we chose that spectrum intentionally for the comparison. The other meteorite spectra were selected automatically. To do so, we performed a χ^2 test between the Lutetia spectrum and all the meteorite spectra on this two catalogues, and selected the ones showing a higher correlation with the Lutetia spectrum. They were all normalized and shifted in order to simplify the visual comparison between them. All the spectra selected from the catalogues were obtained from powders with grain sizes $< 75 \mu\text{m}$, except for the KLE 98300 EH3 spectrum which comes from a sample with a grain size $< 5 \mu\text{m}$. With respect to the techniques, the spectra from RELAB are biconical reflectance spectra collected with an Off-Axis FT-IR Thermo Nicolet Nexus 870 with PIKE AutoDiff, while the spectra from ASTER are bidirectional reflectance spectra obtained with a Nicolet 520FT-IR spectrometer equipped with a Labsphere integrating sphere (Baldrige et al. 2009).

RESULTS AND DISCUSSION

The 0.3 to 2.2 μm region

The UV-NIR spectra from Lutetia are usually featureless, except from some faint absorption bands, which are in general understood as different effects of aqueous alteration (see Barucci et al., 2012, and references therein). Indeed, asteroids larger than 100 km are commonly affected by water related processes, probably because they retained water ice that was melted by internal heating and reached the surface by hydrothermal circulation (Grimm and McSween 1989; Fornasier et al., 2014). First a narrow band at 0.43 μm , attributed to spin-forbidden crystal field transition related with ferric iron (Hunt and Ashley, 1979), appears in several spectra (Lazzarin et al., 2004; Belsakaya et al., 2010). A broader band between ~ 0.45 and 0.55 μm , or centered around 0.48 μm , which has also been attributed to the Fe^{3+} spin forbidden (Cloutis et al., 2012b) has been seen in some Lutetia spectra (Lazzarin et al., 2009; Belskaya et al., 2010; Perna et al., 2010). Perna et al. (2010) also identified the Fe^{3+} charge transfer transition in iron oxides band at $\sim 0.6 \mu\text{m}$ (Feierberg et al., 1985) in spectra obtained from the south pole of Lutetia. Another common band is found between 0.8 and 0.9 μm (Bus and Binzel, 2002; Barucci et al., 2005; Belskaya et al., 2010; De León et al., 2011), as a result of Fe^{3+} charge transfer transition in iron oxides (Hunt and Ashley, 1979). Although those features can be found heterogeneously around the asteroid (Barucci et al., 2012), the typical 3 μm band widely attributed to aqueous alteration as it is indicative of the presence of structural OH and interlayer and adsorbed water (Lebofsky, 1978), seems to be more common in the southern hemisphere (Rivkin et al., 2011; Barucci et al., 2012). In fact, it seems that aqueous alteration is more extended in the southern than in the northern regions of Lutetia (Birlan et al. 2004; Rivkin et al. 2011; Vernazza et al. 2011). It also should be noticed that the usual aqueous alteration band at 0.7 μm attributed to $\text{Fe}^{2+} \rightarrow \text{Fe}^{3+}$ transfer absorption on phyllosilicates (Vilas and Gaffey, 1989), is not found on the Lutetia spectra (Barucci et al., 2012). Although the 0.7 and the 3 μm bands are often associated, some mechanisms like the transformation of all Fe^{2+} into Fe^{3+} or heating to $\sim 800 - 900 \text{ K}$ can explain the weakening and even disappearance of the first (Cloutis et al., 2011).

The specific asteroid spectra used here, coming from the VIRTIS and DOLORES observations, are just two examples of the space and ground based data obtained observing Lutetia in the ultraviolet to near-infrared range in the last 30 years (Barucci et al. 2012), which cover and represent different regions of the asteroid, showing therefore a variable presence of features. The VIRTIS spectrum used here for comparison combines information from about 50% of Lutetia's surface, from the north pole to around the equator (Coradini et al. 2011). The DOLORES spectrum comes from the southern hemisphere (Belskaya et al., 2010). In Fig. 4 we plotted together those two spectra of 21 Lutetia, and our spectra of the CH3 chondrite PCA 91467. They show very similar shape up to 0.9 μm , considering the instrumental origin of the bands at 0.6 μm and 0.9 μm in the VIRTIS spectrum (Coradini et al. 2011). Between 0.9 and 1.4 μm the slope is still considerably close, but after this wavelength the VIRTIS spectrum becomes bluer. In fact, several spectra obtained from this asteroid so far show a relatively high variability in slope in the range between 0.9 and 2.4 μm (Nedelcu et al. 2007).

The three PCA 91467 spectra apparently show a wide band between 0.43 and 0.83 μm , which is actually the combination of several smaller bands (Fig 4, B). The very narrow band at 0.43 μm in the DOLORES spectrum can possibly be distinguished as a very faint feature in our spectra (1 in Fig. 4, B, marked as a dotted line), but it is probably a false band as a consequence of the lower resolution of our instrument compared to DOLORES. The band described between \sim 0.45 and 0.55 μm for some Lutetia spectra (Lazzarin et al., 2009; Belskaya et al., 2010; Perna et al., 2010) is seen in our three spectra (marked as 2 in Fig. 4, B, between two solid lines). We can also consider the very faint band at 0.61 μm (3 in Fig. 4, B, marked as a dotted line) as the 0.6 μm band described before for Lutetia (Perna et al., 2010). A drop-off starting at 0.8 μm in the PCA 91467 spectra can be seen (4 in Fig. 4, B, marked as a dotted line) which could be the beginning of the band between 0.8 and 0.9 μm described for some Lutetia spectra (Bus and Binzel, 2002; Barucci et al., 2005; Belskaya et al., 2010; De León et al., 2011),

Many factors can be the origin of the differences between the spectra obtained from the surface of an asteroid and the polished sections of a meteorite. First, we should consider the nature of Lutetia's surface, and the effect it can have on the spectra obtained from the asteroid. Grain size of this material is an important trait to take into account. It has been shown that variations in grain size produce some degree of reddening in the slope of meteorite spectra (Johnson and Fanale, 1973). For example, decreasing the average grain size of CM chondrites usually results in redder spectra (Johnson and Fanale, 1973; Hiroi et al 1993; Cloutis et al., 2011; among others). The bluer slope seen in the Lutetia spectra could therefore be indicative of a grain size in the surface of the asteroid larger than 75 μm (the grain size of the RELAB sample, which shows an equivalent spectral slope to our samples, as explained before). That would be consistent with the Gundlach and Blum (2013) paper, where they described a mean grain radius of surface regolith for Lutetia of 210 μm (although with a large indetermination between +340 μm and -170 μm). However, polarimetric observations indicate that the regolith surface of Lutetia could be covered, at least partially, by material with a mean grain size of less than 20 μm , due to the accumulation of small particles and fragments coming from impact gardening around the asteroid (Belskaya et al. 2010). If this is correct, a different scenario should be considered. According to Cloutis et al. (1990) the presence of magnetite seems to have a bluening effect on the spectra of asteroids, the finer the grain

size of magnetite the bluer the spectra. This mineral has been found in PCA 91467 and other CH chondrites (see e.g. Sugiura, 2000; Chang et al., 2015) and its presence is consistent with the band at 0.48 μm , both in the meteorite and the asteroid (Perna et al., 2010; Cloutis et al., 2012b, and references therein). Indeed, a finer grain size also implies a deepening in absorption bands (Johnson and Fanale, 1973) which could explain why the 0.43 μm band is far more visible in the DOLORES Lutetia spectrum. Another possibility would require a strong heating mechanism for Lutetia beyond 770 K, as high enough temperatures have a bluening effect on spectral slope (Hiroi et al., 1993). If we consider Lutetia as analogous to the parent body of PCA 91467, with the same or similar evolutionary process, this strong heating scenario must have taken place after the meteorite was released from the asteroid's surface, as CH chondrites show low to no evidence of metamorphism on its parent body (Krot et al., 2002). This could be envisioned in the context described by Davis et al. (1989), in which large asteroids were collisionally disrupted, losing partially their surface layers in the case of asteroids larger than 100 km. On these objects, heating from decay of their radioactive elements would be enough to produce water mobilization, and therefore aqueous alteration, in layers close to the surface (Grimm and McSween, 1989), while the interior could be heated to a degree in which thermal metamorphism would be important (Grimm and McSween, 1993). This way, PCA 91467, considered a breccia with high proportion of fragmented components (Bischoff et al., 1994; 2006), would have been formed in the cold surface of such an asteroid, where the aqueous alteration due to internal heating would be very small, or even absent in some regions. Later, the parent fragment of PCA 91467 would be departed from the parent asteroid, which surface would finally be reshaped by collisional processes, uncovering deeper areas with materials more extendedly affected by aqueous alteration, and thermally metamorphosed regions. Applied to Lutetia, that model would partially explain the heterogeneity of its surface (Rivkin et al., 2011; Barucci et al., 2012).

While working with spectra in the UV-NIR we can try to establish another connection between Lutetia and the CHs through the taxonomic classification of asteroids. As explained before, Lutetia has been classified as an M-type asteroid from the Tholen taxonomy due to its moderately high albedo (Barucci et al., 1987; Tholen 1989) and as an Xk or Xc transition type asteroid from the Bus-DeMeo taxonomy due to its spectral slope and absorption bands (Bus and Binzel, 2002; Ockert-Bell et al. 2008; DeMeo et al. 2009). Both its albedo and bulk density are too low to be considered a largely metallic asteroid (Weaver et al. 2010), but they are also too high for the typical C-class asteroids (Shepard et al. 2008), historically considered as the parent bodies of most CCs (see e.g. Chapman et al., 1975). The spectra we obtained from PCA 91467 show a moderately high reflectance, comparable to a moderately high albedo as explained before, which allows us to tentatively connect this meteorite with the Tholen M-type asteroids. With respect to the Bus-DeMeo taxonomy, we have already seen the similarities between the Lutetia and the meteorite spectra in slope and absorption bands, showing that PCA 91467 is also consistent with X-type asteroids. Besides from this comparison, we used the M4AST (Modeling for Asteroids) tool to search for the asteroid spectra that better fits our meteorite spectra (Popescu and Birlan 2012). We reproduce the result obtained from this software in Fig. 8. As expected the spectra of the asteroids belonging to the X-complex from the Bus-DeMeo taxonomy (DeMeo et al. 2009), are the ones that better fit our spectra of PCA 91467, showing similarities in shape and slope. The overall spectral behavior together with the possible band between ~ 0.8 and $0.9 \mu\text{m}$ in the PCA 91467 spectra, indicate that the meteorite spectra seem to

be more connected to the Xk-type asteroids, while the particular Lutetia spectra used here look closer to the Xc-type asteroids.

The 2.5 to 25 μm (4000 to 400 cm^{-1}) region

In Fig. 5 we show our ATR spectrum of a chip of the meteorite PCA 91467 (inverted to be more easily compared to emissivity spectra from asteroids), between 3.0 and 25.0 μm . The thermal infrared spectra of meteorites and asteroids in this range are usually studied through the Christiansen peak, the Reststrahlen bands and the Transparency features (Barucci et al. 2008, Vernazza et al. 2011, and others). In any case, the presence of these features in our ATR spectrum cannot easily be compared with the features seen in IR spectra obtained with other techniques (see e.g. Morlok et al. 2006, Lane et al. 2011, for examples about the shape of IR spectra obtained by different spectroscopic techniques). However, a Christiansen peak related to mineralogy and grain size (Salisbury 1993), and that was identified in the IRS spectrum of Lutetia by Barucci et al. (2008) at 9.39 μm or 1065 cm^{-1} , can be tentatively identified in the ATR spectrum at 9.46 μm or 1057 cm^{-1} , as pointed in Fig. 5 (indicated by a dotted line labeled as 1). This peak, that always occurs between 8 and 9.5 μm (1250 and 1050 cm^{-1}) for silicates (Salisbury 1993), has been identified at around 8.3 μm (1205 cm^{-1}) for enstatite chondrites (Izawa et al. 2010), which could imply that Lutetia is less related with these meteorites than with CH3. In the 8 to 13 μm (1250 to 770 cm^{-1}) region, where the main peaks to compare can be found (Barucci et al. 2008; Morlok et al. 2014), the comparison of specific peaks implies many difficulties. The astronomical data usually have lower signal to noise ratios than laboratory data (see e.g. Barucci et al. 2008). Besides, most asteroids spectra lack specific features probably due to the fine particulate regolith that covers their surface (Lim et al. 2005). Also, the IRS spectrum covers a wide region of the asteroid slightly southern of the equator, encompassing a higher mineralogical variability than what can be found on a meteorite sample, and even small changes in composition can drive to confusion in the position of most mineralogical peaks.

We also examined the Lutetia IRS spectrum in the beginning of the mid-infrared range, from 2.5 to 4 μm (4000 to 2500 cm^{-1}), as in this spectral region several features related with water and organics can be found (see Fig. 6). Comparing with the CC spectra analyzed by Osawa et al. (2005), we saw that the Lutetia IRS spectrum is much more similar to CB and CH chondrites spectra than to any other CC spectra analyzed there. First of all, the peak at 2.709 μm (3692 cm^{-1} , indicated with a dotted line labeled as 1 in Fig. 6) attributed to free O-H stretching vibrations of chrysotile (magnesium-rich phyllosilicate of the serpentine group), was only found in one CB and two CH chondrites. Notice that it is different from the peak at 2.714 μm (3685 cm^{-1}) found in CI chondrites and corresponding to the serpentine mineral lizardite (Osawa et al. 2005). In the Lutetia spectrum this first peak is preceded by another one at 2.66 μm (3758 cm^{-1}) which does not appear in any of the CCs spectra in Osawa et al. (2005), and that we have not identified, yet. A very broad peak centered around 2.94 μm (3400 cm^{-1} , dotted line labeled as 2) is also representative of CH chondrites, and similar to the O-H stretching vibrations of CI chondrites (Osawa et al. 2005). In fact, the two peaks at 2.963 and 3.091 μm (3375 and 3235 cm^{-1} , respectively, corresponding to the dotted lines labeled as 3 and 4) are typical features related with hydrated phyllosilicates (Dyar et al. 2011). The next two dotted lines, labeled as 5 and 6, are at 3.419 μm (2924 cm^{-1}) and at 3.504 μm (2854 cm^{-1}). In the Lutetia IRS spectrum, peak 5 is much higher than

the equivalent identified in Osawa et al. (2005), and looks shifted to a lower wavelength, while the peak number 6 is very weak. Those two peaks have been attributed to symmetric and asymmetric C-H stretching vibrations of aliphatic (CH₂ and CH₃) organics (Sandford et al., 1991) whether they are the consequence of terrestrial contamination (which is obviously not an option for Lutetia) or they have an extraterrestrial origin.

Finally, in Fig. 7 we can see the comparison between the IRS spectrum of Lutetia and five spectra from the ASTER and RELAB catalogues. The selected spectra correspond to one spectrum of the CV3 CC Allende and one spectrum of the CO3.5 CC Lancé (ASTER), plus a spectrum of the CH3 CC PCA 91467, one from the enstatite chondrite of petrologic type 3 (EH3) KLE 98300, and one spectrum from the ureilite Goalpara (RELAB). As mentioned CVs, COs and ECs have been studied before as possible analogs for the asteroid 21 Lutetia (Lazzarin et al. 2004, 2009; Barucci et al. 2008, 2012; Belskaya et al. 2010; Ockert-Bell et al. 2010; Vernazza et al. 2011; among others), while some ureilites, despite of being achondrites (with a high content in carbon), have been proved to have similar spectra in the thermal infrared (Lazzarin et al. 2009). CH chondrites have also been suggested in previous studies (Lazzarin et al. 2009; Coradini et al. 2011), and their possible relation with Lutetia is the main interest of this study. Unfortunately, there is only one spectrum of a CH in these two catalogues, and more data would be necessary for a detailed comparison.

We studied all the main peaks in the ~8 to 12 μm (1250 to 833 cm^{-1}) plateau of the IRS spectrum, which arises from the O-Si-O asymmetric stretching vibration (Salisbury, 1993), plus three peaks in the ~13.5 to 15.5 μm (740 to 645 cm^{-1}) region (they are highlighted with dotted lines in Fig. 7, while Table 1 shows the relative strength of each peak on every spectrum). It has to be taken into account, however, that some of the selected peaks are not very strong, and therefore could be a product of noise, instead of real peaks. Based on literature data, Table 2 reports a plausible assignment of them all, attributed to the presence of silicates and phyllosilicates. Cosmic silicates have been mostly found in amorphous state, characterized by broad and structureless IR bands at about 10 and 18 μm (1000 and 555 cm^{-1}) that can be attributed to the Si-O stretching and O-Si-O bending modes, respectively (Henning, 2010). However, crystalline silicates have also been detected in different environments such as circumstellar media and around young stellar objects (Molster and Kemper, 2005), which exhibit a wealth of narrow bands. The most abundant classes of silicates in space are olivine and pyroxene. Moreover, phyllosilicates (also called hydrous silicates because they form from hydration of anhydrous silicates) are commonly present in interplanetary dust particles and different CC types, in which a shallow band at 2.75 μm (3636 cm^{-1}), associated with OH-bonded silicate vibrations, attests for a partial hydration of the silicate component. The main diagnostic band that indicates the presence of cosmic silicates is near 9.8 μm (1020 cm^{-1}). Dorschner et al. (1995) identified bands at 9.80 and 9.78 μm (1020 and 1022 cm^{-1}) associated with olivine glasses. Thus, band 3 in Fig. 7 (9.87 μm or 1013 cm^{-1}) can be due to the presence of amorphous olivines. In contrast to the single peak for olivines, pyroxenes (and in particular enstatite) present two characteristic bands at 9.4 and 10.8 μm (1064 and 926 cm^{-1}) according to Zaikowski et al. (1975). These two bands (2 and 5 in Fig. 7) are present in the meteorites samples at 9.39 and 10.84 μm (1065 and 923 cm^{-1}). Crystalline silicates are likely present in the analyzed meteorite samples since band 6 (centered at 11.33 μm or 883 cm^{-1}) matches perfectly well with the diagnostic bands at 11.2 – 11.4 μm (893 – 877 cm^{-1}) associated with crystalline

olivines (Jäger et al. 1998) and at 11.3 μm (885 cm^{-1}) for crystalline forsterite (Bouwman et al. 2001). In the same way, bands 7, 9 and 10 (at 11.63, 14.49 and 15.25 μm , respectively, or 860, 690 and 656 cm^{-1}) can be due to the presence of crystalline forms of enstatite as they match to the featured bands at 11.6, 14.5 and 15.4 μm (862 , 690 and 649 cm^{-1}) of synthetic crystalline clinoenstatite (Jäger et al. 1998). Band 8, at 13.87 μm (721 cm^{-1}) can also be related to crystalline enstatite (Jäger et al. 1998). It is worth mentioning that the bands 3 and 9 (9.87 and 14.49 μm , or 1013 and 690 cm^{-1}) can also be contributed by the presence of talc, a phyllosilicate with formula $\text{Mg}_3(\text{Si}_2\text{O}_5)_4(\text{OH})_2$. The presence of this mineral can be understood by the hydration of enstatite and its presence has been detected in natural enstatite samples from peaks at 9.8 – 9.9 μm (1020 – 1010 cm^{-1}) and 14.6 – 15.0 μm (685 – 667 cm^{-1}) (Jäger et al. 1998). Moreover, other phyllosilicates can also be present since band 4 (10.48 μm or 954 cm^{-1}) can be attributed to chlorite, a phyllosilicate with general formula $(\text{Mg}, \text{Al}, \text{Fe})_{12}(\text{Si}, \text{Al})_8\text{O}_{20}(\text{OH})_{16}$ and a characteristic band at 10.5 μm (952 cm^{-1}), and band 2 (9.39 μm or 1065 cm^{-1}) can also result from the presence of serpentine ($\text{Mg}_6(\text{Si}_2\text{O}_5)_2(\text{OH})_8$), which has a featured band at 9.3 μm (1075 cm^{-1}) (Zaikowski et al. 1975). Finally band 1 (8.79 μm or 1138 cm^{-1}) can be due to the presence of pure silica SiO_2 component, but only if we very tentatively consider a broad band centered at 8.6 μm (1163 cm^{-1}) present in the spectral region of a sample of Herbig Ae/Be stars (Bouwman et al. 2001).

Table 1.

Table 2.

In the transparency feature between ~ 12 and 13.5 μm (833 to 740 cm^{-1}) and the region above 16 μm (625 cm^{-1}), we consider the general shape but not the peaks, as they are poorly defined probably as a consequence of the low signal to noise ratio (Barucci et al. 2008). The general shape of the five spectra match quite well the Lutetia spectrum, but going into more detail several differences can be seen. First, the slope of the smooth plateau between ~ 13.5 to 15.5 μm (740 to 645 cm^{-1}) is similar in all the spectra, but the CCs match better the general relative intensity of the peaks and deep of the bands, although none of them show exactly the same features as Lutetia. Concerning the Christiansen peak, all the catalogues spectra show it shifted in a maximum of $\pm 0.25\text{ }\mu\text{m}$ with respect to the IRS spectrum (to the point of being confused or mixed with other peaks). The spectrum that apparently shows the closest transparency feature between ~ 12 and 13.5 μm (833 to 740 cm^{-1}) is the one from PCA 91467. For the peaks in the ~ 13.5 to 15.5 μm (740 to 645 cm^{-1}) region, they are absent in Allende and very faint in the other CCs, while they are quite strong in the spectra of Lutetia, the EC and the ureilite. In the region above 16 μm (625 cm^{-1}) Allende shows the more similar slope and general behavior, while PCA 91467 and Lancé have slightly bluer spectra and the spectra from KLE 98300 and Goalpara show much more strong features than the IRS spectrum. Several reasons can explain the differences between these spectra. Besides from specific variations in mineralogy and composition, the grain size of the samples can affect the general slope and the depth of bands, effect that seems to be more important in CCs than in ECs (Barucci et al. 2012, and references therein). Other variations can be the result of using different techniques. As a summary, it seems that all of them show some spectral similarities with the asteroid 21 Lutetia at those wavelengths, so none of them can be completely discarded or selected as a proper

analogue without a more detailed comparison, at least not from a thermal infrared point of view.

CONCLUSIONS

After comparing UV-NIR and IR spectra from the asteroid 21 Lutetia and the CH3 meteorite PCA 91467, we reached the following conclusions:

- a) The distinctive slope and features, together with the degree of absolute reflection, allow us to establish a possible relationship between PCA 91467 and asteroids resembling Lutetia. Through asteroid taxonomy both objects can be related to M-type asteroids in the Tholen taxonomy, and to the asteroids belonging to the X-complex in the Bus-DeMeo taxonomy. Consistently, CH chondrites exhibit reflectance and mineralogical properties that suggest that their parent bodies can be found among moderate albedo asteroids with mostly featureless spectra. Also, the peculiar combination of a high content in carbon and metal common in CH chondrites can explain many of the special properties of Lutetia, or at least of some regions of this asteroid. Finally, the inferred density of this asteroid is quite close to the bulk density calculated for CH meteorites.
- b) In the UV-NIR comparison we found that the selected spectra from Lutetia and PCA 91467 are reasonably similar, considering the differences between polished sections and the regolith-covered surface expected for Lutetia. The intermediate to high reflectance of PCA 91467 is consistent with the intermediate albedo of Lutetia. The differences are probably a consequence of some posterior evolution of the parent body, and also due to the space weathering affecting its surface. We propose that PCA 91467 was formed as a breccia on the cold surface of an asteroid similar to Lutetia. After the meteorite was released to space, collisional processes broke the outer layers of the asteroid, revealing more aqueously altered and thermally metamorphosed regions. Therefore, the current heterogeneity on the surface of Lutetia would be showing us different degrees of alteration and mineralogical evolution.
- c) We compared the IRS spectrum of Lutetia with several spectra of different meteorites extracted from the RELAB and ASTER catalogues. We tentatively related the several features identified to mineralogy. Despite all spectra compared in Fig. 7 show a certain degree of correlation with Lutetia, none of them can be established as a perfect analogue for this specific spectrum of the asteroid. This is expected, as this specific IRS spectrum is the mean of 14 different spectra, probably showing a heterogeneous combination of mineralogies. The position of particular features is clearly different between Lutetia and enstatite chondrites, and also from the COs and CVs used here for comparison. Those three constitute the main types of meteorites suggested before as analogues to Lutetia.
- d) In the specific comparison between the 21 Lutetia spectra and Osawa et al (2005) and RELAB spectra of PCA 91467 in the IR region, we have seen the similarity in the position of organic (in the 2.5 to 4 μm region) and silicate

(in the 8 to 16 μm region) associated peaks. Several differences point towards a higher presence of hydrated minerals and aqueous alteration in Lutetia than in PCA 91467. This is consistent with the already mentioned scenario in which alteration by water mobilization on the asteroid took place after PCA was expelled from its still cold and mostly unaltered surface.

We conclude that PCA 91467, our meteorite samples, and by extension the group of CH chondrites, proceed from a Lutetia-type asteroid, i.e., an asteroid with properties and evolutionary history resembling those of Lutetia. Those meteorites can possibly be considered as analogues for particularly primitive regions on the surface of Lutetia. This could imply that at a certain point on Lutetia's life a reservoir of CH-like material accumulated or formed on its surface, as a result of aggregation and/or impacts. The parent fragments of CH chondrites were saved from differentiation due to the size and general properties of its parent asteroid, which prevented thermal metamorphism due to internal heating, and partially aqueous alteration, to reach the most outer layers of this object. As this is still a tentative scenario, a more careful deciphering of both the absorption bands and slope in the UV-NIR, plus the mineralogical features in the IR, is still needed to establish a proper relationship and understanding the evolutionary context of these and similar objects. In fact, for future studies it would be desirable to use a larger amount of Lutetia spectra and also from several CH3 samples measured in different conditions, in order to establish a stronger connection, or to rule it out.

Acknowledgments - Current research was supported by the Spanish Ministry of Science and Innovation (projects: AYA2011-26522, CTQ2015-62635-ERC and CTQ2014-60119-P) and CSIC (starting grant #201050I043). J. Ll. is grateful to ICREA Academia program. We thank the Rosetta-VIRTIS team to provide the Lutetia spectrum in digital form. NASA Meteorite Working Group for providing the Antarctic carbonaceous chondrites is also acknowledged. A.R. is indebted to Programa Banco de Santander for a UAB distinguished postdoctoral research contract. This study was done in the frame of a PhD. on Physics at the Autonomous University of Barcelona (UAB).

TABLES

Table 1. Comparison between peaks of the spectra in Fig. 7.

Spectrum	1	2	3	4	5	6	7	8	9	10
	8.79 ^a 1138 ^b	9.39 ^a 1065 ^b	9.87 ^a 1013 ^b	10.48 ^a 954 ^b	10.84 ^a 923 ^b	11.33 ^a 883 ^b	11.63 ^a 860 ^b	13.87 ^a 721 ^b	14.49 ^a 690 ^b	15.25 ^a 656 ^b
21 Lutetia	sm	md	md	sm	sm	sm	sm	sm	lg	lg
Allende	nd	md ^c	md	sm	sm	nd	lg ^c	nd	nd	nd
PCA 91467	sm	md ^c	nd	nd	sm	nd	sm ^c	sm	sm	sm
Lancé	sm	md ^c	md ^c	nd	sm	nd	md ^c	sm	nd	sm
KL 98300	sm	lg ^c	md ^c	nd	lg	lg	sm ^c	lg ^c	md ^c	lg
Goalpara	sm	lg ^c	md	nd	md ^c	nd	lg ^c	md ^c	md ^c	md

^a Position of the peak in μm .

^b Position of the peak in cm^{-1} .

^c The peak (if the same) is notably shifted.

nd Not detected or shifted in such a way that can be confused with another peak.

sm Relatively small peak.

md Relatively medium peak.

lg Relatively large peak.

Table 2. Assignment of the IR bands presented in Figure 7.

Band position		Presence of	Reference
μm	cm^{-1}		
8.79	1138	SiO_2	(Bouwman <i>et al.</i> 2001)
9.39	1065	enstatite	(Zaikowski <i>et al.</i> 1975)
9.87	1013	serpentine	(Zaikowski <i>et al.</i> 1975)
		olivines	(Dorschner <i>et al.</i> 1995)
10.48	954	talc	(Zaikowski <i>et al.</i> 1975)
		chlorite	(Zaikowski <i>et al.</i> 1975)
10.84	923	enstatite	(Zaikowski <i>et al.</i> 1975)
11.33	883	crystalline olivines	(Jäger <i>et al.</i> 1998)
		crystalline forsterite	(Bouwman <i>et al.</i> 2001)
11.63	860	crystalline enstatite	(Jäger <i>et al.</i> 1998)
13.87	721	crystalline enstatite	(Jäger <i>et al.</i> 1998)
14.49	690	crystalline enstatite	(Jäger <i>et al.</i> 1998)
		talc	(Zaikowski <i>et al.</i> 1975)
15.25	656	crystalline enstatite	(Jäger <i>et al.</i> 1998)

FIGURES

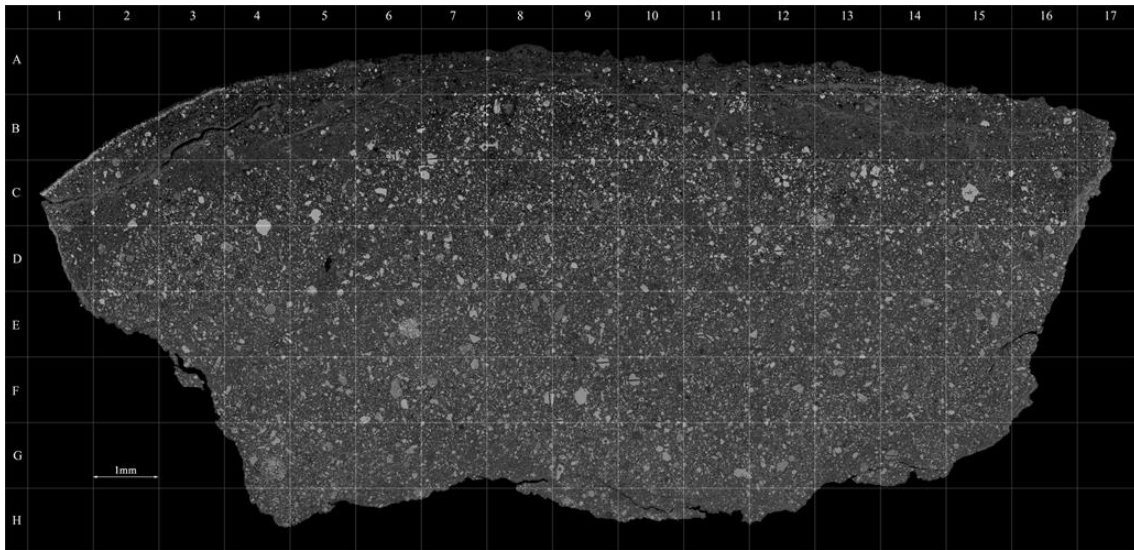


Fig. 1. Thin section PCA 91467,25. A thin fusion crust and a 1 mm thick rusty surface that suffered terrestrial weathering can be found at the top. The light grey inclusions are metal grains more abundant below the altered region. The superimposed grid is 1 mm wide.

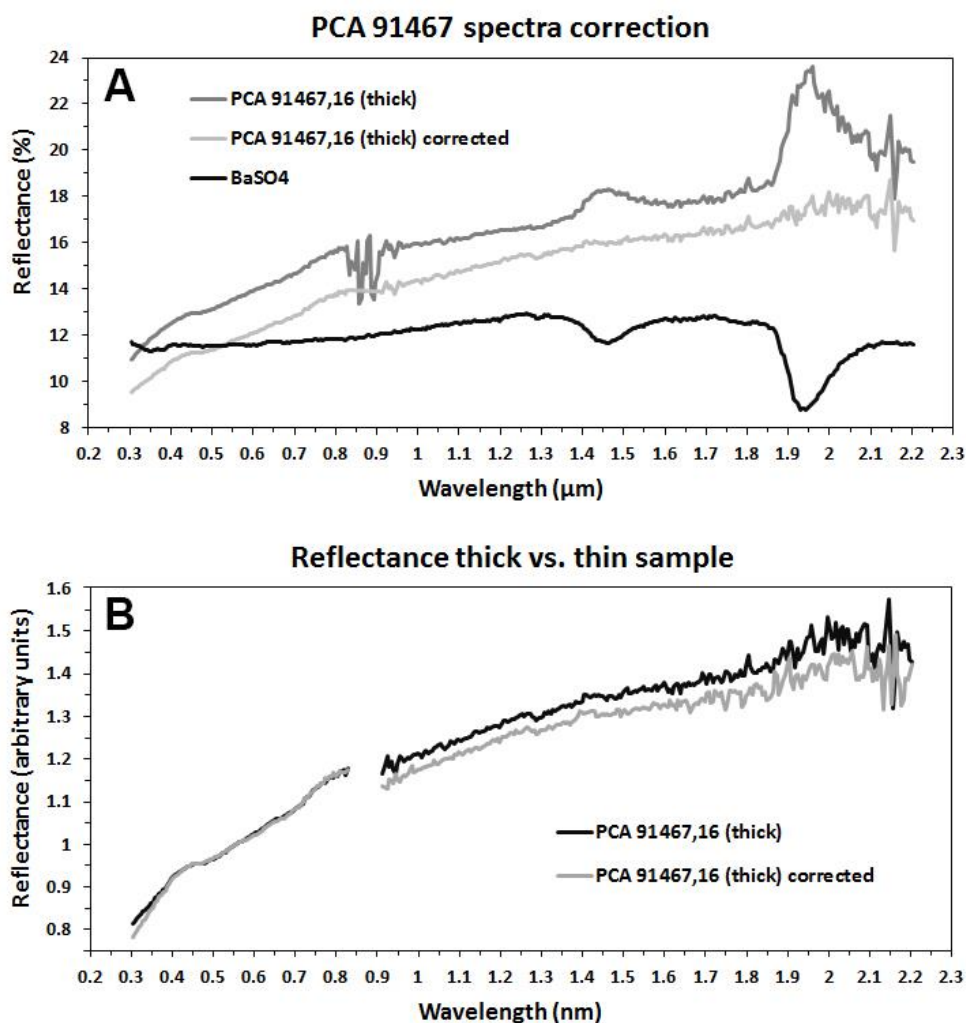


Fig. 2. Analysis of the PCA 91467 spectra obtained with the Shimadzu UV 3600 spectrometer between 0.3 and 2.2 μm . In A we show the corrections applied to our spectra. In the region between 0.8 and 0.9 μm instrumental noise dominates the spectra, and therefore we removed these data from the spectra. As can be seen comparing to the BaSO₄ spectrum, the peaks between 1.4 and 1.6 and between 1.9 and 2.2 are due to some contribution by the substrate of the spectrometer. Also, above 2.1 μm the signal becomes very noisy and hardly useful. In B we show how the differences between the spectra obtained from a thin and a thick samples are rather small.

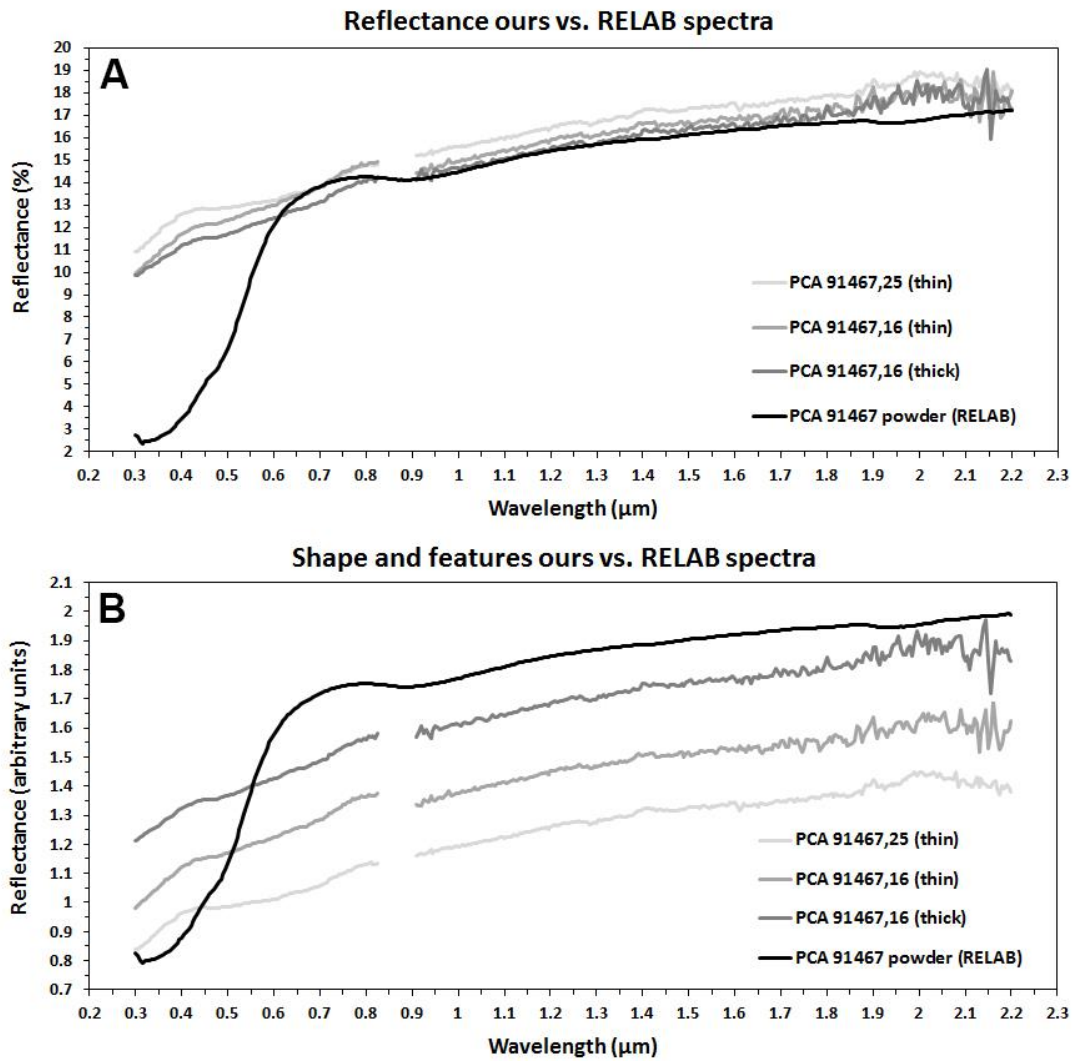


Fig. 3. Comparison between our spectra obtained from sections and the RELAB spectrum of the PCA 91467 CH3 chondrite, obtained from a powder. In A we compare the reflectance, showing that, from 0.6 μm onwards, the highest difference between any of our spectra and the RELAB spectrum is smaller than 2%. In B we display the four spectra (normalized and then shifted). They are described in the text.

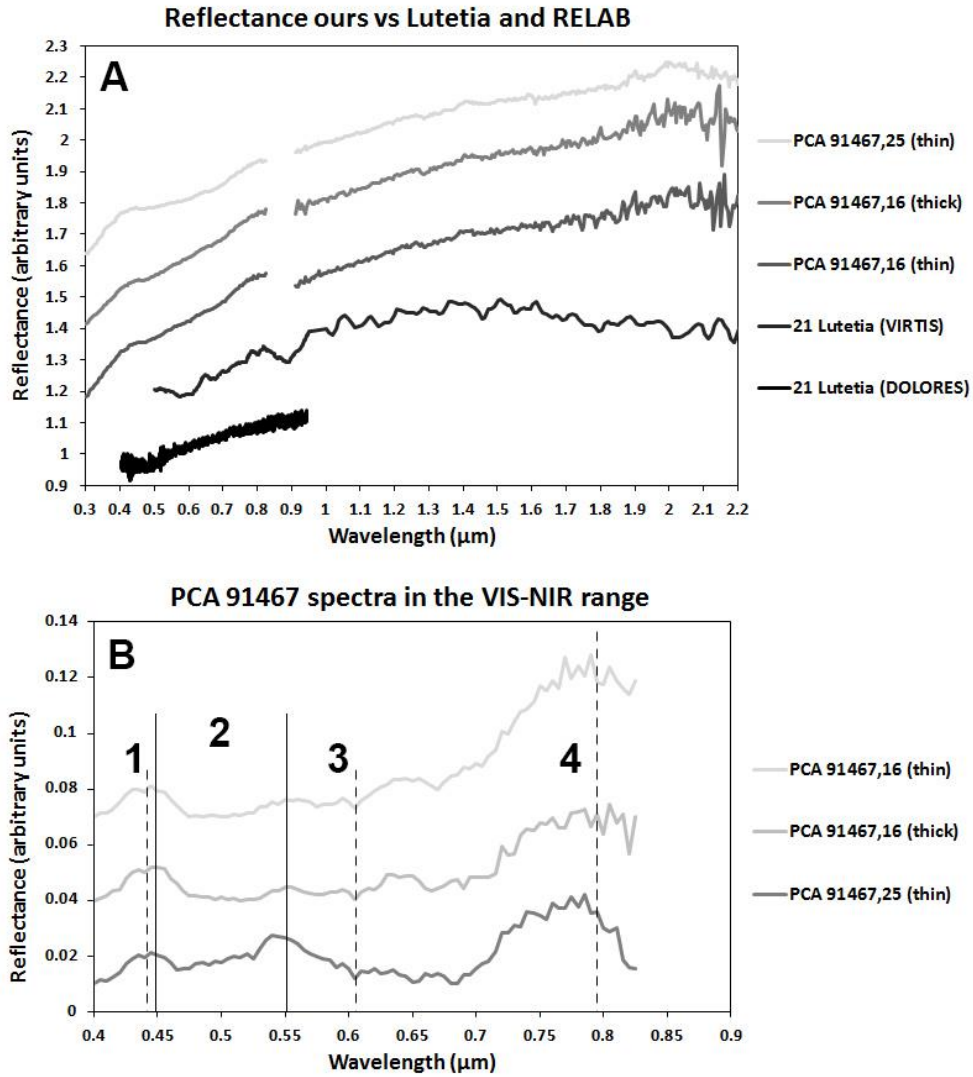


Fig. 4. The reflection spectra from the PCA 91467 sections we used compared in A to the Lutetia spectra in the UV-NIR range as measured by VIRTIS and DOLORES. The spectra are normalized to 1 at 0.5 μm , and shifted for visibility purposes. In B we compare the PCA 91467 spectra from our sections to the DOLORES spectrum. The continuum was removed from the 4 of them to properly compare the absorption bands and features. They are also shifted.

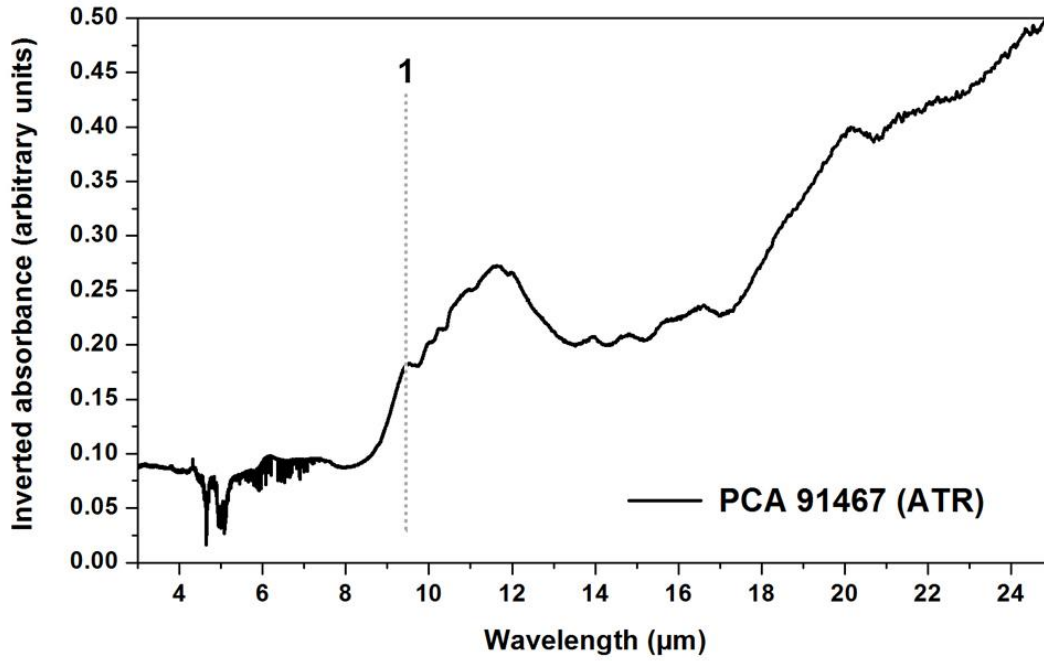


Fig. 5. ATR inverted absorbance spectrum of a chip of PCA 91467 (black). The grey vertical dotted line indicates the position of the Christiansen feature.

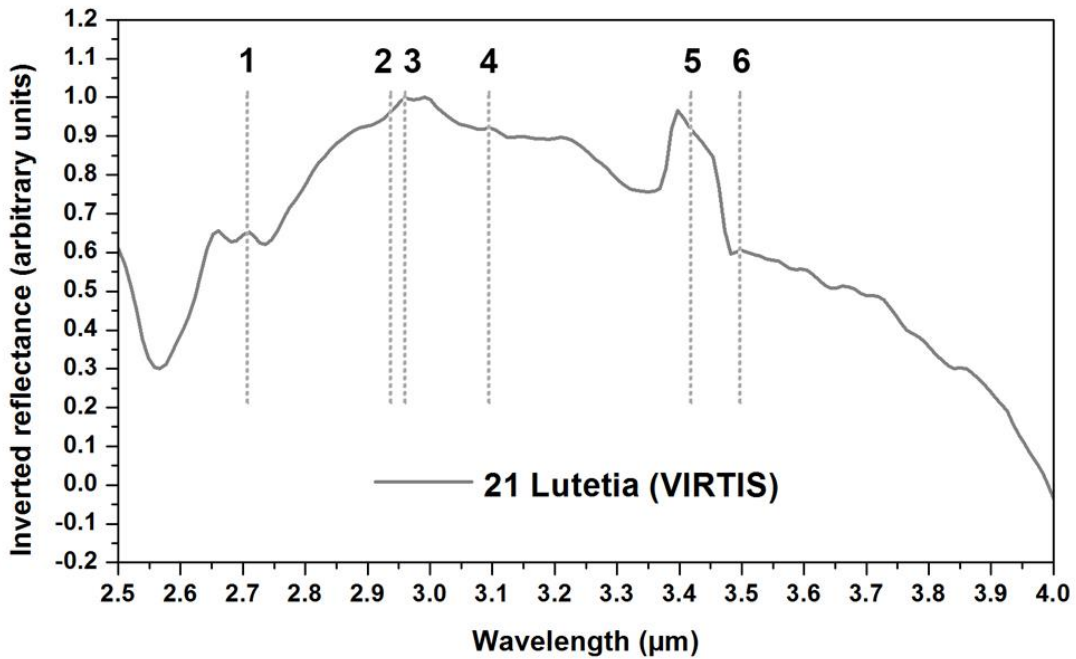


Fig. 6. Inverted VIRTIS spectrum of the asteroid 21 Lutetia in the 2.5 to 4.0 μm (and 3800 to 2800 cm^{-1}) range. The grey vertical dotted lines indicate the position of several features related to CH chondrites in Osawa et al. (2005), and explained into more detail in the text.

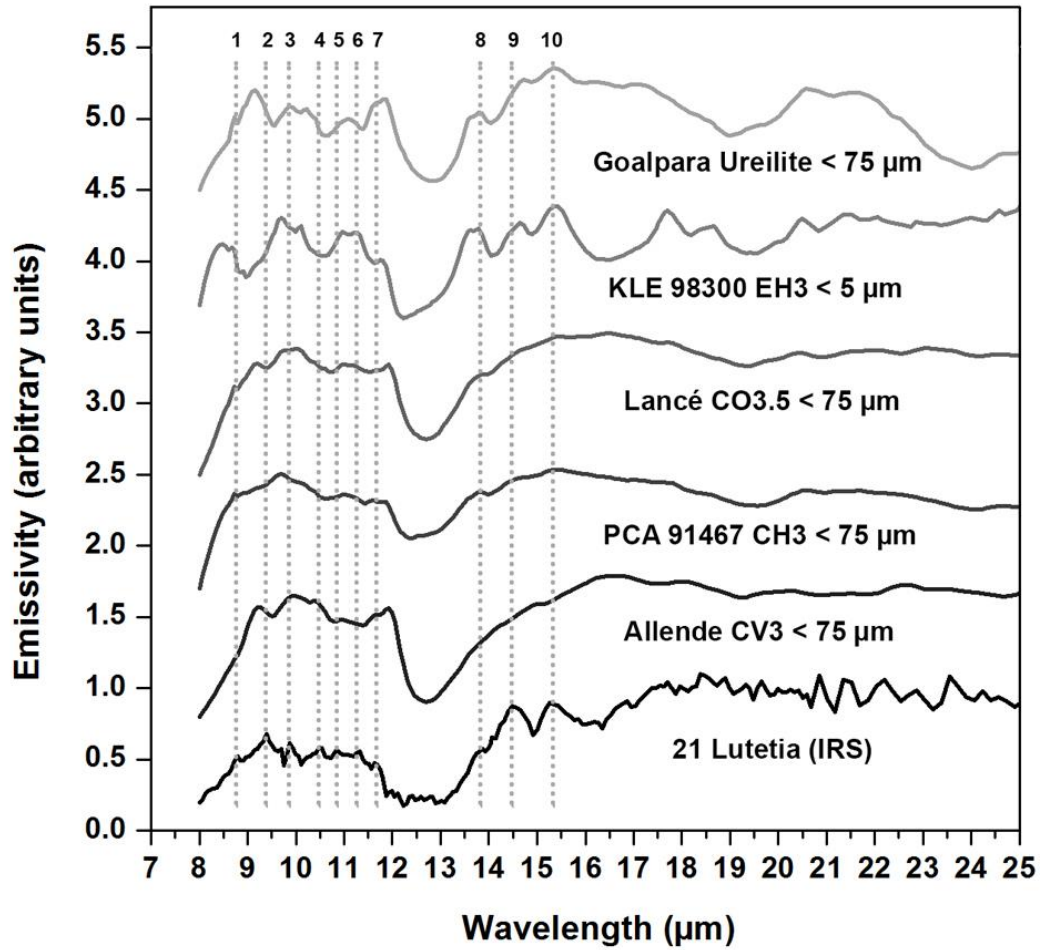


Fig. 7. IRS spectrum of the asteroid 21 Lutetia in the 8.0 to 25.0 μm (1250 to 400 cm^{-1}) range. The grey vertical dotted lines indicate the position of several peaks in the spectrum of 21 Lutetia (see text and Table for a more detailed explanation). Every spectrum is labeled with its name and grain size. The Allende and Lancé spectra were taken from the ASTER catalogue, while Goalpara, KLE 98300 and PCA 91467 were extracted from RELAB.

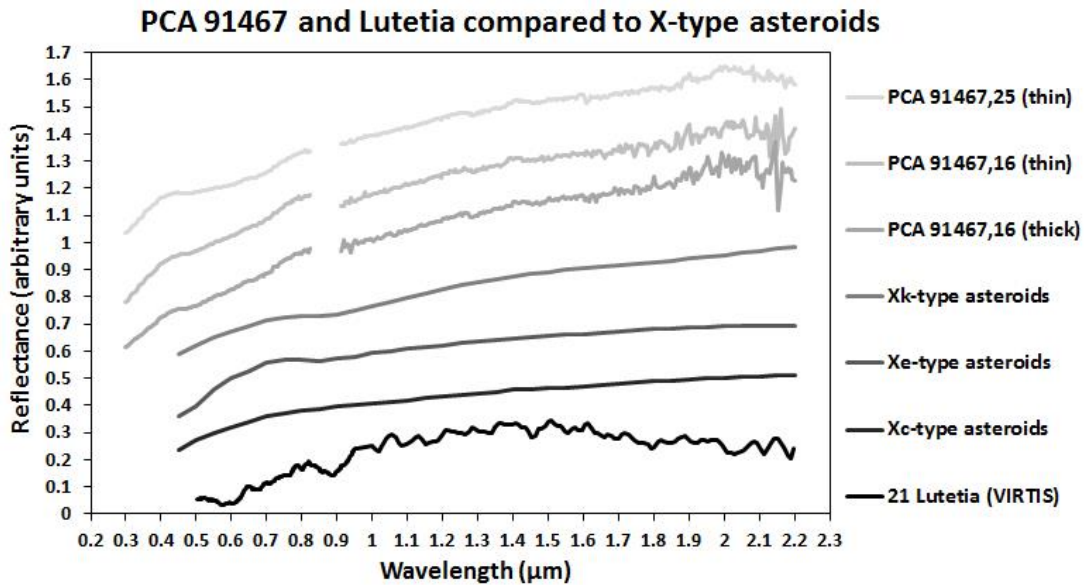


Fig. 8. UV-NIR spectra of the thin sections from PCA 91467 compared to the spectra of asteroids from the X-complex of the Bus-DeMeo taxonomy (Bus and Binzel 2002; DeMeo et al. 2009), in which each spectrum represents the mean of several asteroid spectra classified as belonging to the same group. All the spectra are normalized and shifted, to avoid superposition.

REFERENCES

- Baldrige A. M., Hook S. J., Grove C. I., and Rivera G. 2009. The ASTER Spectral Library Version 2.0. *Remote Sensing of Environment* 113:711-715.
- Barucci M. A., Capria M. T., Coradini A., and Fulchignoni M. 1987. Classification of asteroids using G-mode analysis. *Icarus* 72:304-324.
- Barucci M. A., Fulchignoni M., Fornasier S., Dotto E., Vernazza P., Birlan M., Binzel R. P., Carvano J., Merlin F., Barbieri C., Belskaya I. N. 2005. Asteroid target selection for the new Rosetta mission baseline. 21 Lutetia and 2867 Steins. *Astronomy & Astrophysics* 430:313-317.
- Barucci M. A., Fornasier S., Dotto E., Lamy P. L., Jorda L., Groussin O., Brucato J. R., Carvano J., Alvarez-Candal A., Cruikshank D., Fulchignoni M. 2008. Asteroids 2867 Steins and 21 Lutetia: surface composition from far infrared observations with the Spitzer space telescope. *Astronomy & Astrophysics* 477:665-670.
- Barucci M. A., Belskaya I. N., Fornasier S., Fulchignoni M., Clark B. E., Coradini A., Capaccioni F., Dotto E., Birlan M., Leyrat C., Sierks H., Thomas N., and Vincent J.B. 2012. Overview of Lutetia's surface composition. *Planetary and Space Science* 66, 1:23-30
- Belskaya I. N., Fornasier S., Krugly Y. N., Shevchenko V. G., Gaftonyuk N. M., Barucci M. A., Fulchignoni M., Gil-Hutton R. 2010. Puzzling asteroid 21 Lutetia: our knowledge prior to the Rosetta fly-by. *Astronomy & Astrophysics* 515:A29.
- Binzel R. P., Morbidelli A., Merouane S., DeMeo F. E., Birlan M., Vernazza P., Thomas C. A., Rivkin A. S., Bus S. J., and Tokunaga A. T. 2010. Earth encounters as the origin of fresh surfaces on near-Earth asteroids. *Nature* 463: 331-334.
- Birlan M., Barucci M. A., Vernazza P., Fulchignoni M., Binzel R. P., Bus S. J., Belskaya I. N., and Fornasier, S., 2004. Near-IR spectroscopy of asteroids 21 Lutetia, 89 Julia, 140 Siwa, 2181 Fogelin and 5480 (1989YK8), potential targets for the Rosetta mission-remote observations campaign on IRTF. *New Astronomy* 9:343-351.
- Birlan M., Vernazza P., Fulchignoni M., Barucci M. A., Descamps P., Binzel R. P., Bus S. J. 2006. Near infra-red spectroscopy of the asteroid 21 Lutetia: I. New results of long-term campaign. *Astronomy & Astrophysics* 454:677-681.
- Bischoff A., Schirmeyer S., Palme H., Spettel B., and Weber D. (1994) Mineralogy and chemistry of the carbonaceous chondrite PCA 91467 (CH). *Meteoritics and Planetary Science* 29: 444.
- Bischoff A., Scott E. R. D., Metzler K., Goodrich C. A. 2006. Nature and Origins of Meteoritic Breccias In Meteorites and the Early Solar System II, edited by Lauretta D.S. and McSween H.Y. Jr. Tucson: The University of Arizona Press. pp 679-712.
- Bouwman J., Meeus G., Koter A. D., Hony S., Dominik C., Waters L. B. F. M. 2001. Processing of silicate dust grains in Herbig Ae/Be systems. *Astronomy and Astrophysics* 375:950-962.
- Bus S. J., and Binzel R. P. 2002. Phase II of the small main-belt asteroid spectroscopic survey: the observations. *Icarus* 158:106-145.
- Campbell A. J., and Humayun M. 2004. Formation of metal in the CH chondrites ALH 85085 and PCA 91467. *Geochimica et Cosmochimica Acta* 68:3409-3422.
- Chan Q. H. S., Zolensky M. E., and Martínez J. 2015. Scaffold of asymmetric organic compounds – Magnetite plaquettes (abstract#1150). 46th Lunar and Planetary Science Conference.
- Chapman C. R., Morrison D., Zellner B. 1975. Surface properties of asteroids: A synthesis of polarimetry, radiometry, and spectrophotometry. *Icarus* 25:104-130.

- Chemtob S. M., and Glotch T. D. 2007. Linear deconvolution of attenuated total reflectance infrared spectra of fine-grained mineral mixtures (abstract#1097). 38th Lunar and Planetary Science Conference.
- Clark B.E., Ziffer J., Nesvorny D., Campins H., Rivkin A. S., Hiroi T., Barucci M. A., Fulchignoni M., Binzel R. P., Fornasier S., DeMeo F., Ockert-Bell M. E., Licandro J., and Mothé-Diniz T. 2010. Spectroscopy of B-type asteroids: Subgroups and meteorite analogs. *Journal of Geophysical Research* 115:E06005.
- Clark B. E., Binzel R. P., Howell E. S., Cloutis E. A., Ockert-Bell M., Christensen P., Barucci M. A., DeMeo F., Lauretta D. S., Connolly H. Jr., Soderberg A., Hergenrother C., Lim L., Emery J. and Mueller M. 2011. Asteroid (101955) 1999 RQ36: Spectroscopy from 0.4 to 2.4 μm and meteorite analogs. *Icarus* 216:462-475.
- Cloutis E. A., Gaffey M. J., Smith D. G. W., and Lambert R. St. J. 1990. Reflectance spectra of “featureless” materials and the surface mineralogies of M- and E-class asteroids. *Journal of Geophysical Research* 95:281-293.
- Cloutis E. A., Hudon P., Hiroi T., Gaffey M.J., Mann P. 2011 Spectral reflectance properties of carbonaceous chondrites: 2. CM chondrites. *Icarus* 216:309-346.
- Cloutis E. A., Hudon P., Hiroi T., Gaffey M. J. 2012a. Spectral reflectance properties of carbonaceous chondrites: 4. Aqueously altered and thermally metamorphosed meteorites. *Icarus* 220:586-617.
- Cloutis E. A., Hudon P., Hiroi T., Gaffey M. J., and Mann P. 2012b. Spectral reflectance properties of carbonaceous chondrites: 8. “Other” carbonaceous chondrites: CH, ungrouped, polymict, xenolithic inclusions, and R chondrites. *Icarus* 221:984-1001.
- Coradini A., Capaccioni F., Erard S., Arnold G., De Sanctis M. C., Filacchione G., Tosi F., Barucci M. A., Capria M. T., Ammannito E., Grassi D., Piccioni G., Giuppi S., Bellucci G., Benkhoff J., Bibring J. P., Blanco A., Blecka M., Bockelee-Morvan D., Carraro F., Carlson R., Carsenty U., Cerroni P., Colangeli L., Combes M., Combi M., Crovisier J., Drossart P., Encrenaz E. T., Federico C., Fink U., Fonti S., Giacomini L., Ip W. H., Jaumann R., Kuehrt E., Langevin Y., Magni G., McCord T., Mennella V., Mottola S., Neukum G., Orfino V., Palumbo P., Schade U., Schmitt B., Taylor F., Tiphene D., and Tozzi G. 2011. The surface composition and temperature of Asteroid 21 Lutetia as observed by ROSETTA/VIRTIS. *Science* 334:492-494.
- Davis D. R., Weidenschilling S. J., Farinella P., Paolicchi P., Binzel R. P. 1989. Asteroid collisional history: Effects on sizes and spins. In *Asteroids II*, edited by Binzel R. P., Gehrels T., and Matthews M. S. Tucson: University of Arizona Press. pp. 805– 826.
- De León J., Duffard R., Lara L.M., Lin Z.-Y. 2011. Photometric and spectroscopic observations of asteroid (21) Lutetia three months before the Rosetta fly-by. *Astronomy & Astrophysics* 527 (id.A42).
- DeMeo F., Binzel R., Slivan S. M., and Bus S. J. 2009. An extension of the Bus asteroid taxonomy into the near-infrared. *Icarus* 202:160-180.
- Dorschner J., Begemann B., Henning T., Jaeger C., Mutschke H. 1995. Steps toward interstellar silicate mineralogy. II. Study of Mg-Fe-silicate glasses of variable composition. *Astronomy and Astrophysics* 300:503.
- Drummond J. D., Conrad A., Merline W. J., Carry B., Chapman C. R., Weaver H. A., Tamblyn P. M., Christou J. C., and Dumas C. 2010. The triaxial ellipsoid dimensions, rotational pole, and bulk density of ESA Rosetta target asteroid (21) Lutetia. *Astronomy & Astrophysics* 523: id.A93
- Dyar M. D., Glotch T. D., Lane M. D., Wopenka B., Tucker J. M., Seaman S. J., Marchand G. J., Klima R., Hiroi T., Bishop J. L., Pieters C., Sunshine J. 2011. Spectroscopy of Yamato 984028. *Polar Science* 4:530-549.
- Feierberg M. A., Lebofsky L. A., Tholen D. J.. 1985. The nature of C-class asteroids from 3- 1m spectrophotometry. *Icarus* 63:183-191.
- Fornasier S., Lantz C., Barucci M. A., Lazzarin M. 2014. Aqueous alteration on main belt primitive asteroids: Results from visible spectroscopy. *Icarus* 233:163-178.
- Gaffey M. J. 1976. Spectral reflectance characteristics of the meteorite classes. *Journal of Geophysical Research* 81:905-920.

- Grimm R. E. and McSween H. Y. 1989. Water and the thermal evolution of carbonaceous chondrite parent bodies. *Icarus* 82:244-280.
- Grimm R. E. and McSween H. Y. 1993. Heliocentric zoning of the asteroid belt by aluminum-26 heating. *Science* 259:653-655.
- Gundlach B. and Blum J. 2013 A new method to determine the grain size of planetary regolith. *Icarus* 222: 479-492.
- Hendrix A. R. and Vilas F. 2006. The effects of space weathering at UV wavelengths: S-class asteroids. *The Astronomical Journal* 0:1396-1404.
- Henning T. 2010. Cosmic Silicates. *Annual Review of Astronomy and Astrophysics* 48:21-46.
- Hiroi T., Pieters C. M., Zolensky M. E., Lipschutz M. E. 1993. Evidence of thermal metamorphism on the C, G, B, and F asteroids. *Science* 261:1016-1018.
- Hunt G. R. and Ashley R. P. 1979. Spectra of altered rocks in the visible and nearinfrared. *Economic Geology* 74:1613-1629.
- Izawa M. R. M., King P. L., Flemming R. L., Peterson R. C., McCausland P. J. A. 2010. Mineralogical and spectroscopic investigation of enstatite chondrites by X-ray diffraction and infrared reflectance spectroscopy. *Journal of Geophysical Research* 115:E07008.
- Jäger C., Molster F. J., Dorschner J., Henning T., Mutschke H., Waters L. B. F. M. 1998. Steps toward interstellar silicate mineralogy. IV. The crystalline revolution. *Astronomy and Astrophysics* 339:904.
- Johnson T. V. and Fanale F. P. 1973. Optical properties of carbonaceous chondrites and their relationship to asteroids. *Journal of Geophysical Research* 78:8507-8518.
- Krot A. N., Meibom A., Weisberg M. K., and Keil K. 2002. The CR chondrite clan: Implications for early solar system processes. *Meteoritics and Planetary Science* 37:1451-1490.
- Lamy P. L., Groussin O., Fornasier S., Jorda L., Kaasalainen M., Barucci M. A. 2010. Thermal properties of asteroid 21 Lutetia from Spitzer Space Telescope observations. *Astronomy & Astrophysics* 516:A74.
- Lane M. D., Glotch T. D., Dyar M. D., Pieters C. M., Klima R., Hiroi T., Bishop J. L., and Sunshine J. 2011. Midinfrared spectroscopy of synthetic olivines: Thermal emission, specular and diffuse reflectance, and attenuated total reflectance studies of forsterite to fayalite. *Journal of Geophysical Research* 116:E08010.
- Lazzarin M., Marchi S., Magrin S., and Barbieri C. 2004. Visible spectral properties of asteroid 21 Lutetia, target of Rosetta mission. *Astronomy & Astrophysics* 425:L25-L28.
- Lazzarin M., Marchi S., Moroz L. V., and Magrin S. 2009. New visible spectra and mineralogical assessment of (21) Lutetia, a target of the Rosetta mission. *Astronomy & Astrophysics* 498:307-311.
- Lebofsky L. A. 1978. Asteroid 1 Ceres: Evidence for water of hydration. *Monthly Notices of the Royal Astronomical Society* 182:17-21.
- Lim L. F., McConnochie T. H., Bell J. F. I., and Hayward T. L. 2005. Thermal infrared (8-13 μm) spectra of 29 asteroids: the Cornell Mid-Infrared Asteroid Spectroscopy (MIDAS) Survey. *Icarus* 173:385-408.
- Macke R. J., Britt D. T., Consolmagno G. J., and Hutson M. L. 2010. Enstatite chondrite density, magnetic susceptibility, and porosity. *Meteoritics and Planetary Science* 45:1513-1526.
- Molster F. and Kemper C. 2005. Crystalline Silicates. *Space Science Reviews* 119:3-28.
- Morlok A., Köhler M., Bowey J. E., and Grady M. M. 2006. FT-IR microspectroscopy of extraterrestrial dust grains: Comparison of measurement techniques. *Planetary and Space Science* 54:599-611.
- Morlok A., Lisse C. M., Mason A. B., Bullock E. S., and Grady M. M. 2014. Mid-infrared spectroscopy of components in chondrites: Search for processed materials in young Solar Systems and comets. *Icarus* 231:338-355.
- Moyano-Camero C. E., Trigo-Rodríguez J. M., and Llorca J. 2013. UV-NIR Spectra of the Most Reflective Carbonaceous Chondrite Groups: CH, CR and R (abstract#1533). 44th Lunar and Planetary Science Conference.

- Mueller M., Harris A. W., Bus S. J., Hora J. L., Kassis M., Adams J. D. 2006. The size and albedo of Rosetta fly-by target 21 Lutetia from new IRTF measurements and thermal modeling. *Astronomy & Astrophysics* 447:1153-1158.
- Nedelcu A., Birlan M., Vernazza P., Descamps P., Binzel R.P., Colas F., Kryszczyńska, and Bus S. J. 2007. Near infra-red spectroscopy of the asteroid 21 Lutetia. II. Rotationally resolved spectroscopy of the surface. *Astronomy & Astrophysics* 470: 1157-1164.
- Ockert-Bell M. E., Clark B. E., Shepard M. K., Rivkin A. S., Binzel R. P., Thomas C. A., DeMeo F. E., Bus S. J., and Shah S. 2008. Observations of X/M asteroids across multiple wavelengths. *Icarus* 195:206-219.
- Ockert-Bell M. E., Clark B. E., Shepard M. K., Isaacs R. A., Cloutis E. A., Fornasier S., and Bus S. J. 2010. The composition of M-type asteroids: synthesis of spectroscopic and radar observations. *Icarus* 210:674-692.
- Osawa T., Kagi H., Nakamura T., and Noguchi T. 2005. Infrared spectroscopic taxonomy for carbonaceous chondrites from speciation of hydrous components. *Meteoritics and Planetary Science* 40, 1:71-86.
- Pätzold M., Andert T. P., Asmar S. W., Anderson J. D., Barriot J.-P., Bird M. K., Häusler B., Hahn M., Tellmann S., Sierks H., Lamy P., and Weiss B. P. (2011) Asteroid 21 Lutetia: Low Mass, High Density. *Science* 334:491-492.
- Perna D., Dotto E., Lazzarin M., Magrin S., Fulchignoni M., Barucci M. A., Fornasier S., Marchi S., and Barbieri C. 2010. Inhomogeneities on the surface of 21 Lutetia, the asteroid target of the Rosetta mission. Ground-based results before the Rosetta fly-by. *Astronomy & Astrophysics* 513:L4.
- Popescu M., Birlan M., and Nedelcu D. A. 2012. Modeling of asteroid spectra - M4AST. *Astronomy & Astrophysics* 544:A130.
- Rivkin A. S., Clark B. E., Ockert-Bell M. E., Shepard M. K., Volquardsen E. L., Howell E. S., and Bus S. J. 2011. Observations of 21 Lutetia in the 2-4 μm region with the NASA IRTF. *Icarus* 216:62-68.
- Salisbury J. M. 1993. Mid-infrared spectroscopy laboratory data. In *Remote Geochemical Analysis: Elemental and Mineralogical Composition*, edited by Pieters C. M., and Englert P. A. J. New York: Cambridge University Press. pp. 79-98.
- Sandford S. A., Allamandola L. J., Tielens A. G. G. M., Sellgren K., Tapia M., Pendleton Y. 1991. The interstellar C-H stretching band near 3.4 microns constraints on the composition of organic material in the diffuse interstellar-medium. *The Astrophysical Journal* 371:607-620.
- Shepard M. K., Clark B. E., Nolan M. C., Howell E. S., Magri C., Giorgini J. D., Benner L. A. M., Ostro S. J., Harris A. W., Warner B., Pray D., Pravec P., Fauerbach M., Bennett T., Klotz A., Behrend R., Correia H., Coloma J., Casulli S., and Rivkin A. 2008. A radar survey of M- and X-class asteroids. *Icarus* 195:184-205.
- Sierks H., Lamy P., Barbieri C., Koschny D., Rickman H., Rodrigo R., A'Hearn M., Angrilli F., and Barucci M.A. 2011. Images of asteroid (21) Lutetia: a remnant planetesimal from the early solar system. *Science* 334:487-490.
- Stern S.A., Parker J.W., Feldman P.D., Weaver H.A., Steffl A., A'hearn M.F., Feaga L., Birath E., Graps A., Bertaux J.-L., Slater D.C., Cunningham N., Versteeg M., and Scherrer J.R., 2011. Ultraviolet discoveries at asteroid (21) Lutetia by the Rosetta Alice Ultraviolet Spectrograph, *Astronomical Journal* 141:199-202.
- Sugiura N. 2000. Petrographic evidence for in-situ hydration of the CH chondrite PCA 91467. (abstract#1503). 31st Lunar and Planetary Science Conference.
- Tholen D. J. 1989. Asteroid Taxonomic Classification. In *Asteroids II*, edited by Binzel R. P., Gehrels T., and Matthews M. S. Tucson: University of Arizona Press. pp. 1139-1150.
- Trigo-Rodríguez J. M., Llorca J., Madiedo J. M., Rivkin A. S., de León J., and Pinilla-Alonso N. 2011. Precise Reflectance Spectra of Ordinary Chondrites in the Visible and UV: Exploring the Variability of S-Class Asteroidal Spectra (abstract#1795). 42nd Lunar and Planetary Science Conference.
- Trigo-Rodríguez J. M., Llorca J., Madiedo J. M., Alonso-Azcárate J., Rivkin A. S., Fornasier S., Belskaya I., Binzel R., Moyano-Camero C. E., Dergham J., and Cortés J. 2012. IR

- Reflectance Spectra of Antarctic Carbonaceous Chondrites to Better Characterize the Surfaces of Asteroids Targeted by Sample Return Missions (abstract#1443). 43rd Lunar and Planetary Science Conference.
- Trigo-Rodríguez J. M., Moyano-Camero C. E., Llorca J., Fornasier S., Barucci M. A., Belskaya I., Martins Z., Rivkin A. S., Dotto E., Madiedo J. M., and Alonso-Azcárate J. 2014. UV to far-IR reflectance spectra of carbonaceous chondrites. I. Implications for remote characterization of dark primitive asteroids targeted by sample-return missions. *Monthly Notices of the Royal Astronomical Society* 437:227-240.
- Vernazza P., Lamy P., Groussin O., Hiroi T., Jorda L., King P. L., Izawa M. R. M., Marchis F., Birlan M., and Brunetto R. 2011. Asteroid (21) Lutetia as a remnant of Earth's precursor planetesimals. *Icarus* 216, 2:650-659.
- Vilas F., Gaffey M. J. 1989. Phyllosilicate Absorption Features in Main-Belt and Outer-Belt Asteroid Reflectance Spectra. *Science* 246:790-792.
- Wasson J. T., and Kallemeyn G. W. 1990. Allan Hills 85085 - A subchondritic meteorite of mixed nebular and regolithic heritage. *Earth and Planetary Science Letters* 101:148-161.
- Weaver H. A., Feldman P. D., Merline W. J., Mutchler M. J., A'Hearn M. F., Bertaux J.-L., Feaga L. M., Parker J. W., Slater D. C., Steffl A. J., Chapman C. R., Drummond J. D., and Stern S. A. 2010. Ultraviolet and visible photometry of asteroid (21) Lutetia using the Hubble Space Telescope. *Astronomy & Astrophysics* 518.
- Weisberg M. K., Boesenberg J. S., Kozhushko G., Prinz M., Clayton R. N., and Mayeda T. K., 1995. EH3 and EL3 chondrites: A petrologic-oxygen isotopic study (abstract). *Lunar and Planetary Science* 26:1481-1482
- Weisberg M. K., McCoy T. J., and Krot A. N. 2006. Systematics and Evaluation of Meteorite Classification. In *Meteorites and the Early Solar System II*, edited by Lauretta D. S., and McSween H. Y. Jr. Tucson: University of Arizona Press. pp. 19-52.
- Weiss B. P., Gattacceca J., Stanley S., Rochette P., and Christensen U. R. 2010. Paleomagnetic Records of Meteorites and Early Planetesimal Differentiation. *Space Science Reviews* 152:341-390.
- Weiss B.P., Elkins-Tanton L. T., Barucci M. A., Sierks H., Snodgrass C., Vincent J. B., Marchi S., Weissman P. R., Patzold M., Richter I., Fulchignoni M., Binzel R. P., and Shulz R. 2012. Possible evidence for partial differentiation of asteroid Lutetia from Rosetta. *Planetary and Space Science* 66:137-146.
- Zaikowski A., Knacke R. F., Porco C. C. 1975. On the presence of phyllosilicate minerals in the interstellar grains. *Astrophysics and Space Science* 35:97-115.